



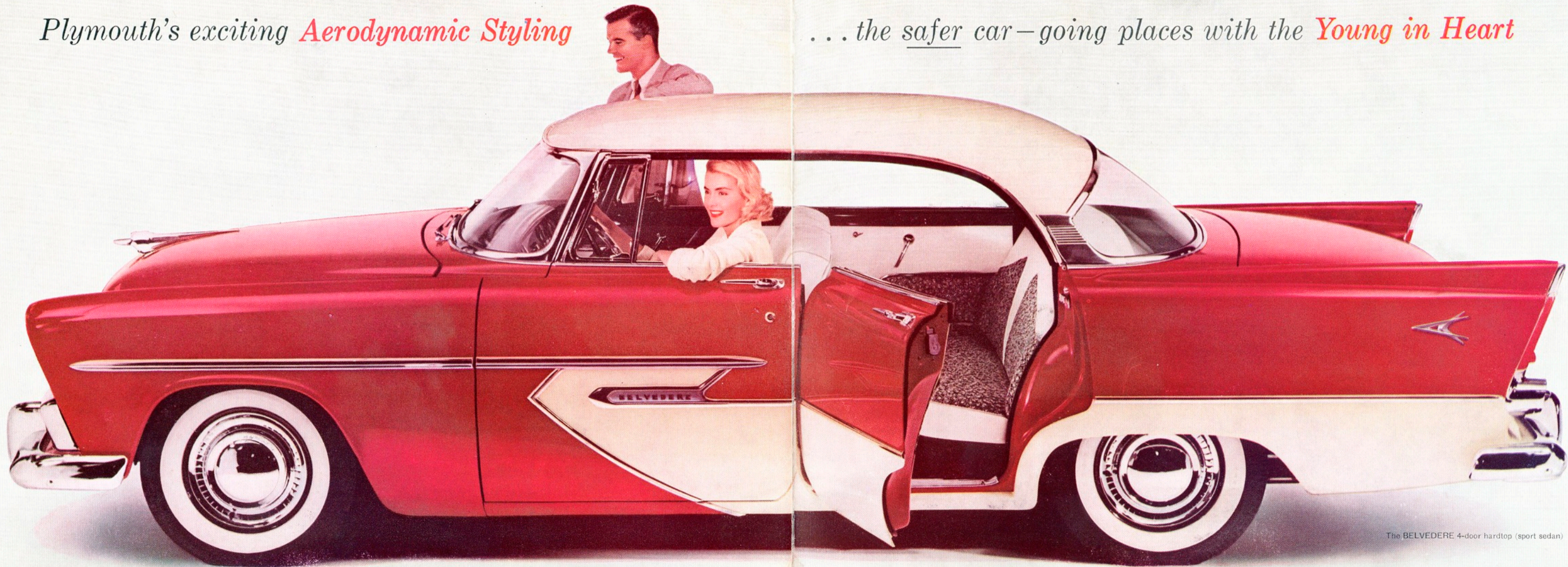
*All-new Aerodynamic*

**PLYMOUTH '56**



Plymouth's exciting *Aerodynamic Styling*

... the safer car—going places with the *Young in Heart*



The BELVEDERE 4-door hardtop (sport sedan)

## 1 THE NEW BELVEDERE LINE



The BELVEDERE 4-door hardtop (sport sedan)



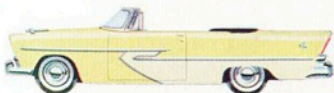
The BELVEDERE 4-door sedan



The BELVEDERE 2-door hardtop (sport coupe)



The BELVEDERE 2-door (club sedan)

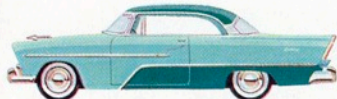


The BELVEDERE convertible—V-8 only

## 2 THE NEW SAVOY LINE



The SAVOY 4-door sedan



The SAVOY 2-door hardtop (sport coupe)



The SAVOY 2-door (club sedan)

## 3 THE NEW PLAZA LINE



The PLAZA 4-door sedan



The PLAZA 2-door (club sedan)



The PLAZA 2-door (business coupe)

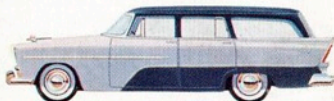
## 4 THE NEW SUBURBAN LINE



The SPORT SUBURBAN, 4-door



The CUSTOM SUBURBAN, 2-door



The CUSTOM SUBURBAN, 4-door



The DE LUXE SUBURBAN, 2-door

Cars are illustrated to show some items of special equipment such as trim, two-tone paint, white-wall tires and wheel covers—all are available at moderate extra cost.

Please ask your dealer for a copy of the special booklet with complete information about these four great new Plymouth Suburbans.

*FOUR GREAT NEW LINES . . . give you  
the ultimate in safety, styling, power and comfort!*



*Only Plymouth offers you  
Hy-Fire V-8 with  
Push-Button Driving and  
90-90 Turbo-Torque Power!*

No other car in the low-price 3 begins to have a power package like this! It puts you out in front—in a hurry! Gives you TOP THRUST AT TAKE-OFF!

The pictures at the right tell the story! You push a button. Touch your foot to the pedal. W-O-O-S-H! You're out and away with bursting acceleration!

Here is safe power! Power to hustle you out of tight spots. Power for passing on crowded highways. Power for climbing the steepest hills,

Your choice of two powerful Plymouth engines. (1) The completely new Hy-Fire V-8 which, coupled with Push-Button PowerFlite and 90-90 Turbo-Torque Power, is designed to give the most outstanding performance ever built into a car in the lowest-price field. (2) And the new, more powerful PowerFlow 6, most dependable "6" on the road. Plymouth's Push-Button PowerFlite, the last word in safe driving, available with both Hy-Fire V-8 and PowerFlow 6 engines.

*Plymouth makes driving fun!*

**Push-Button PowerFlite** . . . makes driving as easy as flicking a light switch. This fabulous new automatic transmission is another Plymouth first in the lowest-price field. Overdrive and Synchro-Silent (conventional) also available.

**Full-Time Power Steering** . . . only Plymouth has it in the low-price 3. Because it's "full time," it can save you as much energy in a hundred miles of driving as you would use shoveling a ton of coal. Be sure to try these other work-saving Plymouth Power Assists:

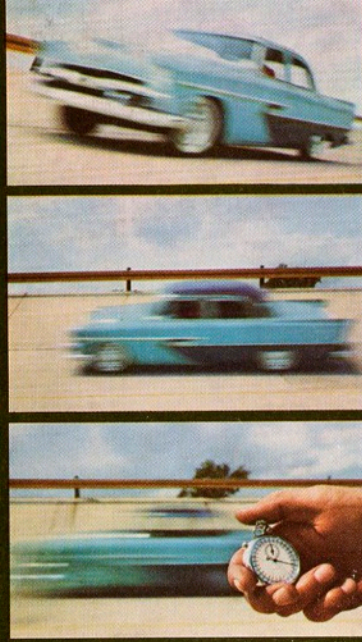
- **Safety-Sure Power Brakes**
- **Push-Button Power Seat**
- **Push-Button Power Windows**

**Highway Hi-Fi Record Player**  
World's first practical car phonograph. Plays up to 60 minutes. Driver can operate while watching the road.

**Plymouth Search-Tune Radio**  
Search-Tune button selects the strongest stations automatically. Five push buttons bring in local stations.

**Plymouth Air Conditioner**  
Turn of a knob lowers temperature to comfortable 70's in just a few minutes. Filters dirt and pollen, too.

**Plymouth High-Capacity Heater**  
Floor-to-roof circulation warms back-seat passengers, too, not just those up front the way some heaters do.



*Engineered for Safety!*

Other cars are just beginning to talk about safety. Year after year Plymouth has been designed and engineered to be a safer car. Look at all the safety features in the new '56 Plymouth—only Plymouth, in the lowest-price field, has them all.

- Safety Seat Belts
- Safety Body Construction
- Safety-Guard Door Latches
- Safety Hand Brake
- Safety-View Windshield
- Safety Starter Switch
- Safety-Guard Hydraulic Brakes
- Safety Beam Headlights
- Safety-Rim Wheels
- Safety Tail Lights
- Safety Electric Windshield Wipers
- Safety No-Glare Instrument Panel

Safety Seat Belts available at moderate extra cost.

*Specifications*

**HY-FIRE V-8 MODELS**

**ENGINE TYPE:** 8-cylinder V-8 with overhead valves. Counterbalanced crankshaft with 5 main bearings. Chain-driven camshaft. Adjustable valve tappets. **FUEL SYSTEM:** Dual-filtration includes Oilite fuel filter in gas tank and new extra-fine ceramic filter at carburetor. **LUBRICATION:** Full pressure to all crankshaft, camshaft, and connecting rod bearings and to valve rocker arms and tappets. Rotor-type oil pump. Shunt-type micronite oil filter (standard on Savoy and Belvedere) with floating oil intake. **COOLING SYSTEM:** Permanent by-pass temperature control. Full-length water jackets. Water pump with ball bearings. **STEERING:** Worm and roller type steering gear. Idler arm steering linkage for maximum controllability.

**POWERFLOW 6 MODELS**

**ENGINE TYPE:** 6-cylinder L-head valve arrangement. Counterbalanced crankshaft with 4 main bearings. Chain-driven camshaft. Aluminum alloy pistons. Top compression ring chrome-plated. Adjustable valve tappets with heat-resistant alloy steel exhaust valve seat inserts. **FUEL SYSTEM:** Oilite fuel filter in gas tank. **LUBRICATION:** Full pressure to all crankshaft, camshaft and connecting rod bearings. Rotor-type oil pump. Micronite oil filter (standard on Savoy and Belvedere). Floating oil intake. **COOLING SYSTEM:** Permanent by-pass temperature control. Full-length water jackets. Water pump with Oilite bronze bearings. **STEERING:** Worm and roller type steering gear.

**V-8 AND 6 MODELS**

**FUEL SYSTEM:** Aluminum downdraft carburetor. Automatic choke. Heavy-duty oil-bath air cleaner. **IGNITION:** Resistor-type spark plugs. Automatic mechanical and vacuum spark control. Splash-proof distributor. **BODY SPECIFICATIONS:** Wheelbase 115 in. Over-all length 204.8 in. Over-all width 74.6 in. Tread 58.4 in. front; 58.5 in. rear. **CONSTRUCTION:** All-steel welded, completely rust-proofed and insulated body. Box-section reinforcements around window and door openings. Baked enamel finish.

**VENTILATION:** Large screened adjustable cowl ventilator. Ventilating wings in each front door (and in rear doors of Savoy and Belvedere 4-door models except 4-door Hardtop). Full-width windshield defroster. **ELECTRICAL:** 12 volt electrical system. Heavy-duty battery. High capacity, 30 amp. generator with automatic voltage and current control. Ignition-key starter switch. Lighting circuit protected with circuit breaker. **CHASSIS:** Rugged steel frame with double-channel arc-welded box-type side rails. Four sturdy cross members. Convertible has X-member between side rails.

**FRONT SUSPENSION:** Independent type with coil springs. Oriflow shock absorbers inside coil springs. Torsion-bar sway eliminator. **REAR SUSPENSION:** 2 1/2 in.-wide rear springs, splay mounted for stability. Sea-leg mounted Oriflow shock absorbers. **DRIVE:** Hotchkiss drive with hypoid rear axle. **BRAKES:** Safety-Guard hydraulic brakes with individually anchored shoes. Two cylinders and two shoes in each front wheel. **TIRES AND WHEELS:** Extra low pressure, 6.70 x 15 tubeless tires. Safety-Rim wheels.

Specifications subject to change without notice.

*your Plymouth dealer*

