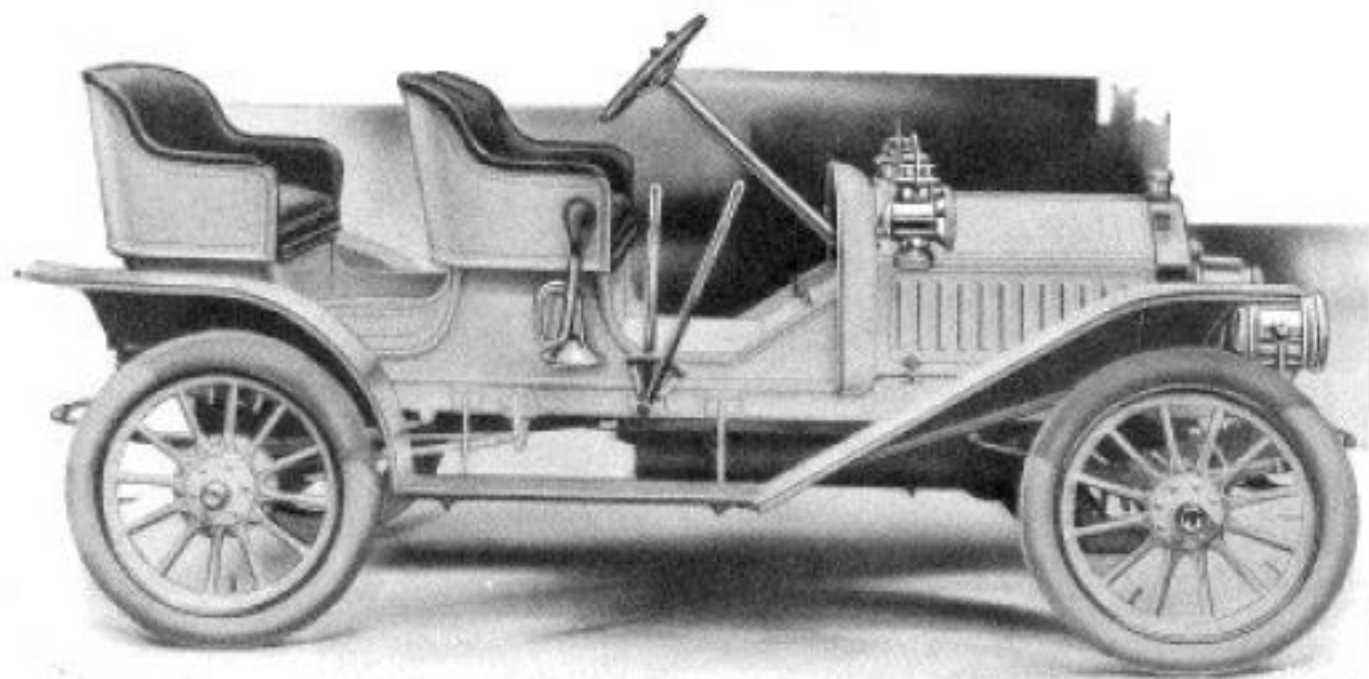


**Buick**  
'09

**W**E take pleasure in presenting our complete line of motor cars for 1909. The illustrations and specifications given in this booklet will give the prospective purchaser a fair idea of the cars. Detailed information concerning any of these models may be obtained from our dealers who will be found handling our line in almost every community.

BUICK MOTOR COMPANY

FLINT, MICHIGAN



This price includes oil lamp, tail lamp,  
generator, gas head-lights, horn  
and repair outfit.

**Price, \$1050**  
F. O. B. Factory

**BUICK Model 10**  
SURREY SEAT

# S P E C I F I C A T I O N S

## MODEL "10"

BODY—Wood, single rumble.

SEATS—Three or four persons.

WHEEL BASE—92 inches.

GAUGE—Standard.

TIRES—30x3½ inches.

BRAKES—Internal expanding hub and external contracting on transmission shaft. The service brake on the transmission shaft is operated by a foot pedal. The internal expanding hub brakes are operated by a side lever.

SPRINGS—Full elliptic rear, semi-elliptic front.

FRAME—Pressed steel.

STEERING GEAR—Irreversible type.

HORSE POWER—18.

CYLINDERS—Four, cast in pairs. Bore 3¾ inches, stroke 3¾ inches. Valve in the head construction.

MOTOR CONTROL—Spark and throttle lever on top of steering wheel.

CLUTCH—Cone.

CHANGE GEAR—Planetary. Two speeds forward, one reverse.

CONTROL—Foot pedals for transmission brake, slow speed ahead, and reverse. Side levers for engagement of clutch and emergency brake.

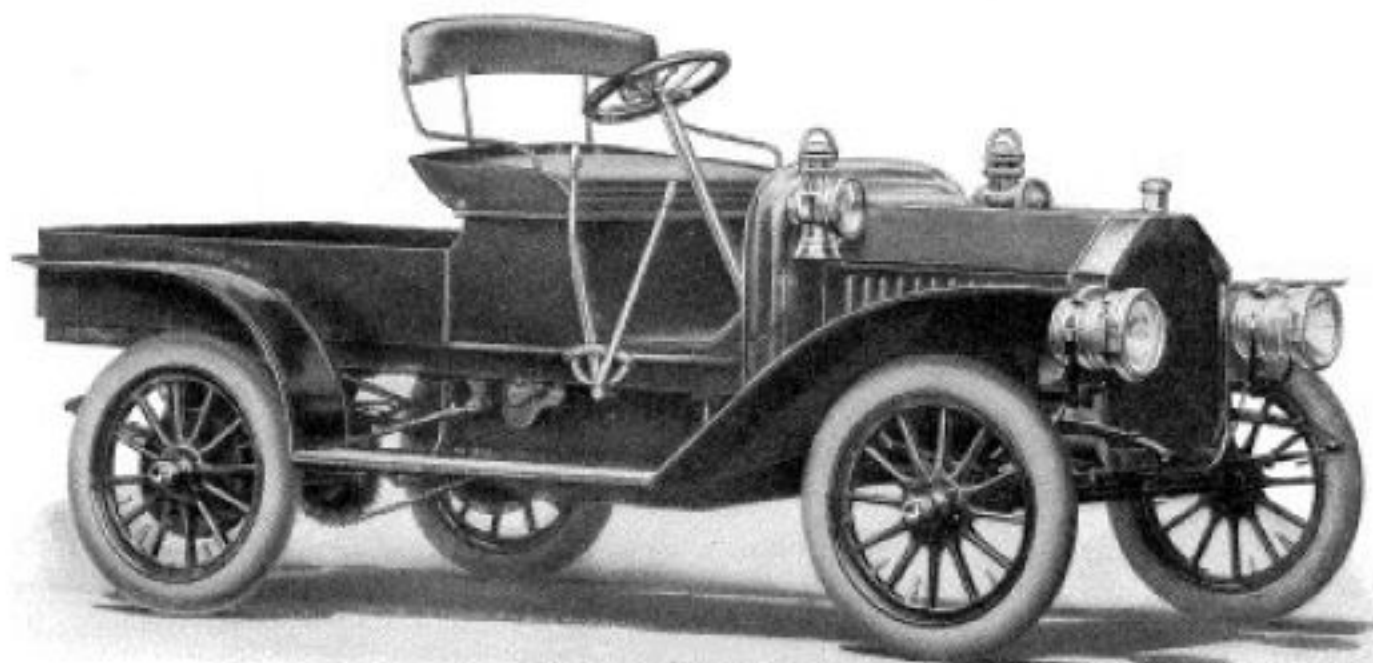
DRIVE—Shaft.

GASOLINE CAPACITY—11 gallons.

PRICES—Model 10 with single rumble seat  
and box - - - - - \$1000  
Model 10 with tourabout seat and box \$1050  
Model 10 with surrey seat and box - \$1050  
F. O. B. factory.

EXTRAS—If additional seats and boxes are desired they can be secured at the following prices: Single rumble seat and box, \$80; Surrey seat and box, \$100; Tourabout seat and box, \$100.

**Note**—The boxes for the tourabout seat and surrey seat are interchangeable, but these boxes are not interchangeable with the box used with the single rumble seat.



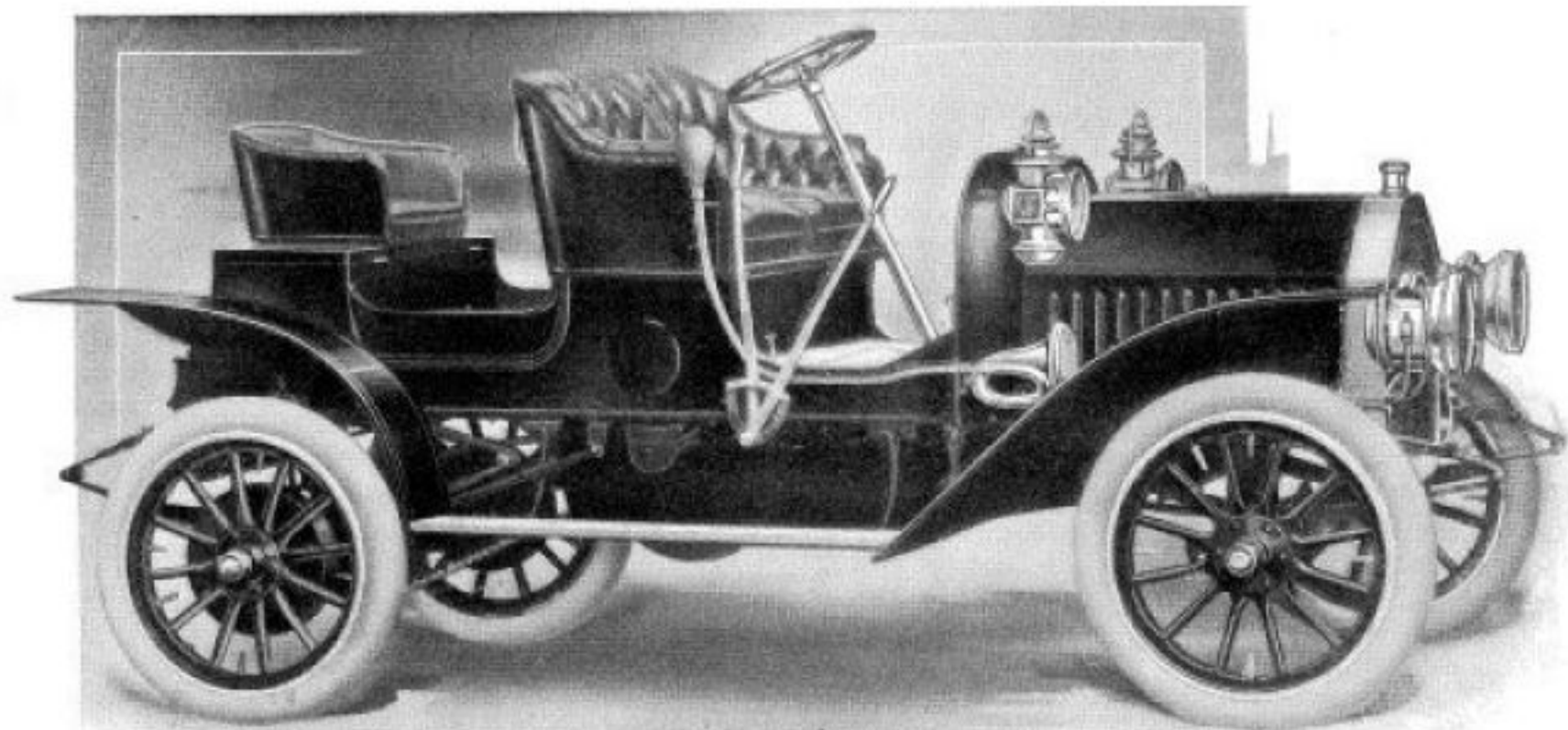
This price includes oil lamps, tail lamp,  
generator, gas head-lights, horn  
and repair outfit.

**Price, \$1150**

F. O. B. Factory

**BUICK**  
DELIVERY CAR

For specifications see description BUICK MODEL F on page 7



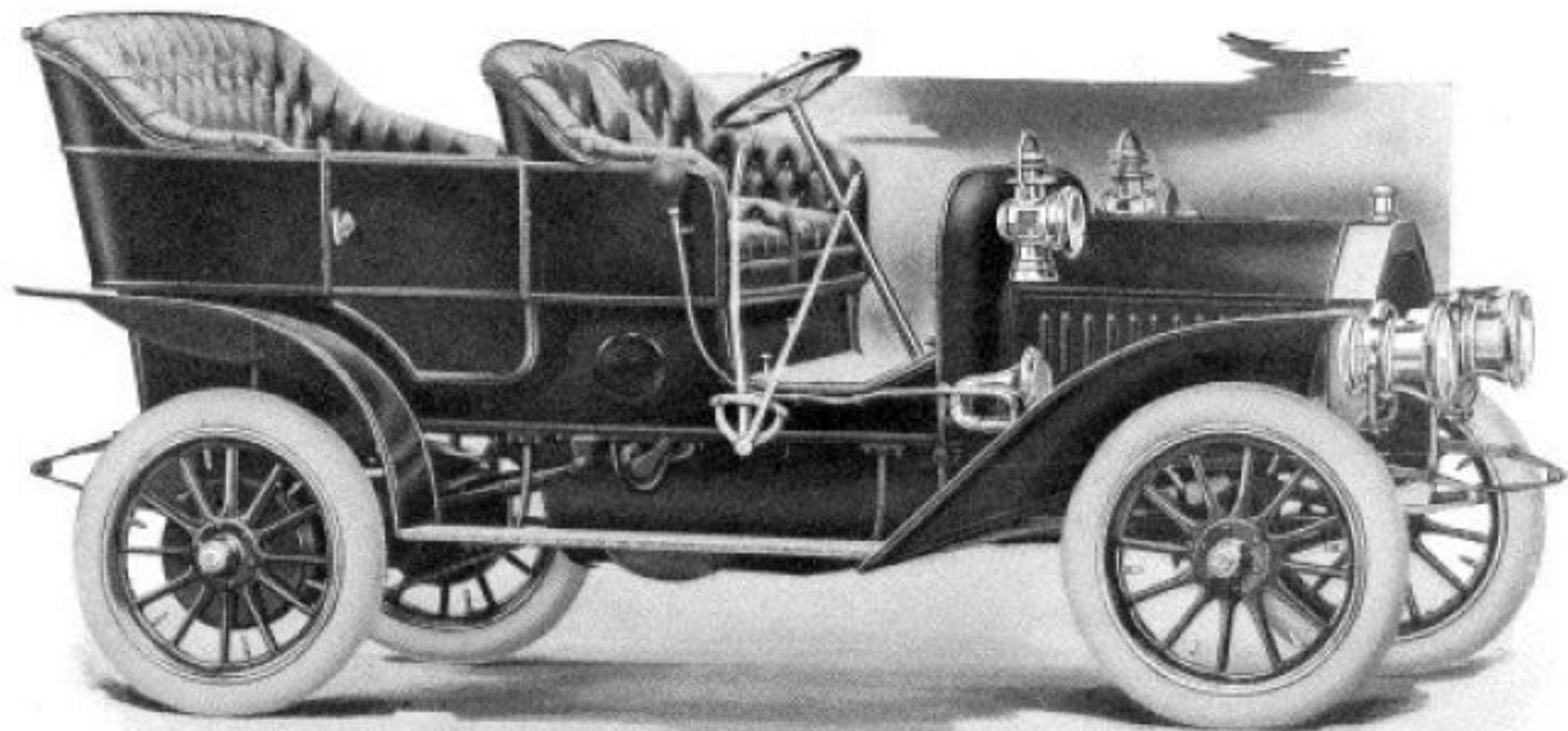
**BUICK Model G**  
**RUNABOUT**

**Price, \$1250**

F. O. B. Factory

This price includes oil lamp, tail lamp,  
generator, gas head-lights, horn  
and repair outfit.

For specifications see description BUICK MODEL F on page 7



This price includes oil lamps, tail lamp,  
generator, gas head-lights, horn  
and repair outfit.

**Price, \$1250**

F. O. B. Factory

**BUICK Model F**

# S P E C I F I C A T I O N S

## MODEL "F"

BODY—Side entrance tonneau.

SEATS—Five persons.

WHEEL BASE—92 inches.

GAUGE—Standard.

TIRES—30x4 inch or 32x3½ inch Michelin.

STEERING—Tilting column, pinion and sector.

BRAKES—External contracting on differential, and internal expanding hub.

SPRINGS—Three-fourths elliptic in front, full elliptic in rear.

FRAME—Angle iron.

MOTOR—Double opposed. 22 H. P.

CYLINDERS—4½ x 5 inches.

VALVE ARRANGEMENT—In head of cylinder; cage and valve removable.

COOLING—Water. Gear pump.

IGNITION—Jump spark.

CURRENT SUPPLY—Storage battery and set of dry cells in reserve.

LUBRICATION—Mechanical force feed lubricator, gear driven.

CARBURETOR—Schebler.

MOTOR CONTROL—Spark and throttle levers on top of wheel on immovable sector.

CHANGE GEAR—Planetary; two speeds forward, one reverse.

CLUTCH—Cone, wide surface, positive action.

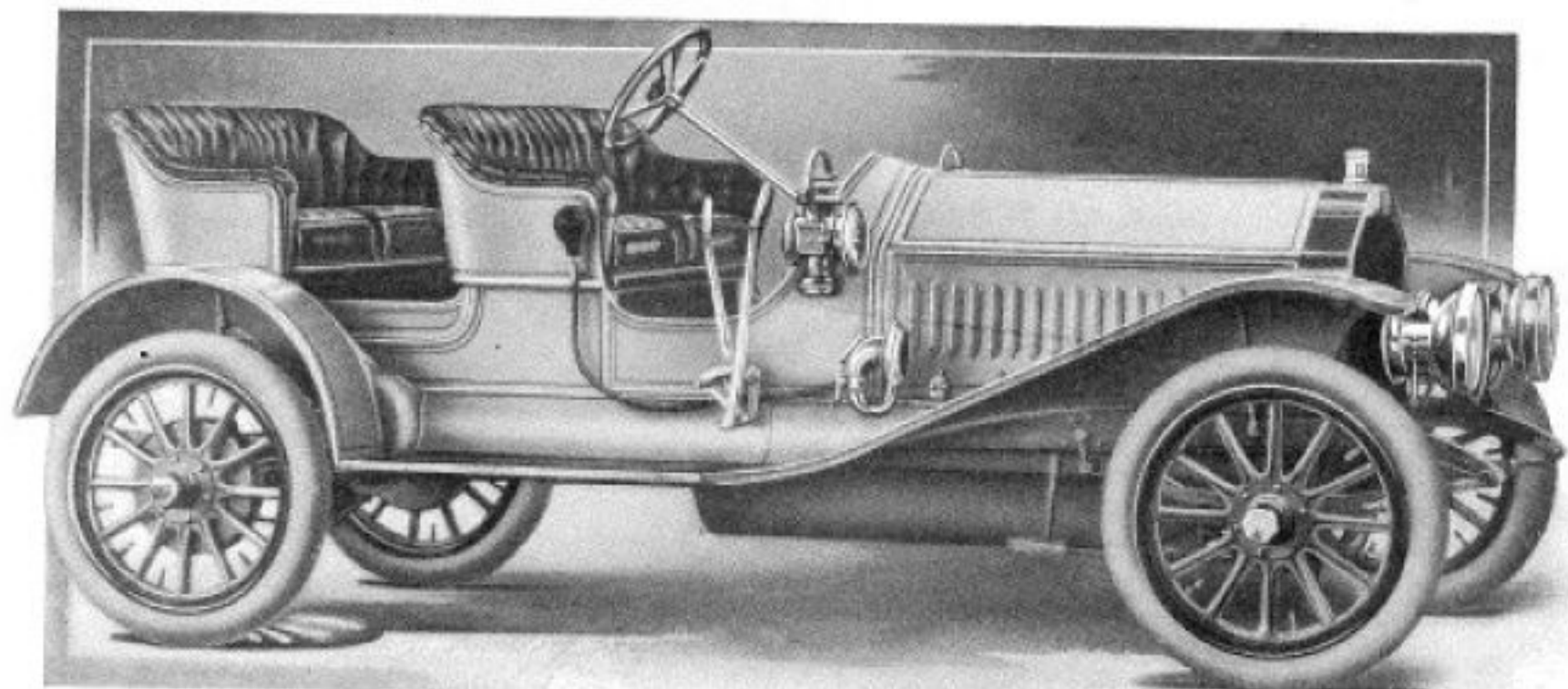
CONTROL—Foot pedals for slow speed ahead and reverse; side lever for engagement of clutch.

DRIVE—Chain.

GASOLINE CAPACITY—15 gallons.

EXTRA—Top.



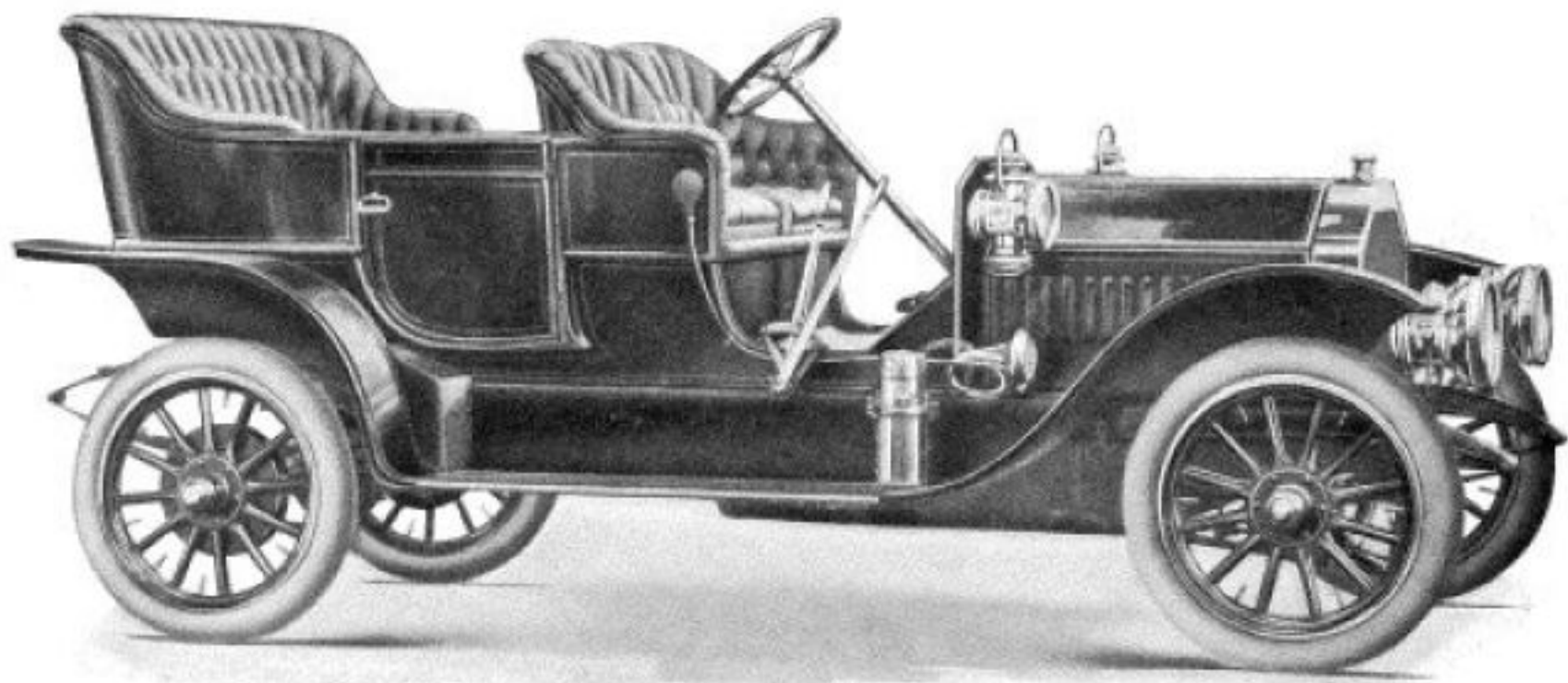


This price includes oil lamp, tail lamp,  
generator, gas head-lights, horn  
and repair outfit.

**Price, \$1750**  
F. O. B. Factory

**BUICK Model 16**  
**TOURABOUT**

BUICK MODELS 16 and 17 are equipped with same type engine. See page 10 for description.  
Model 16 Buick can be furnished with extra aluminum deck and trimmings and extra size gasoline tank at an additional cost.



**BUICK Model 17**  
TOURING CAR

**Price, \$1750**

F. O. B. Factory

For specifications see page 10

This price includes oil lamp, tail lamp,  
generator, gas head-lights, horn  
and repair outfit.

# S P E C I F I C A T I O N S

## Model "17" Buick

BODY—Wood, touring type.

SEATS—Five persons.

WHEEL BASE—112½ inches.

GAUGE—Standard.

TIRES—32 x 4.

BRAKES—Internal expanding hub and external contracting on driving shaft.

SPRINGS—Full elliptic rear, semi-elliptic front.

FRAME—Pressed steel.

STEERING GEAR—Irreversible type.

HORSE POWER—30.

CYLINDERS—4 verticle. 4 1-2 x 5. Valve in the head construction.

MOTOR SUSPENSION—Sub-frame.

COOLING—Water. Gear pump.

**Note**—If equipped with 34 inch wheels and 34x4 inch tires, \$100 extra.

IGNITION—Jump spark.

CURRENT SUPPLY—Magneto and reserve set of dry cells.

CARBURETOR—Schebler.

LUBRICATION—Splash; constant level in crankcase maintained by pump. Fountain sight feed on dash.

MOTOR CONTROL—Spark and throttle levers on top of steering wheel.

CLUTCH—Cone, our special design.

CHANGE GEAR—Sliding gear, selective type, 3 speeds forward, one reverse.

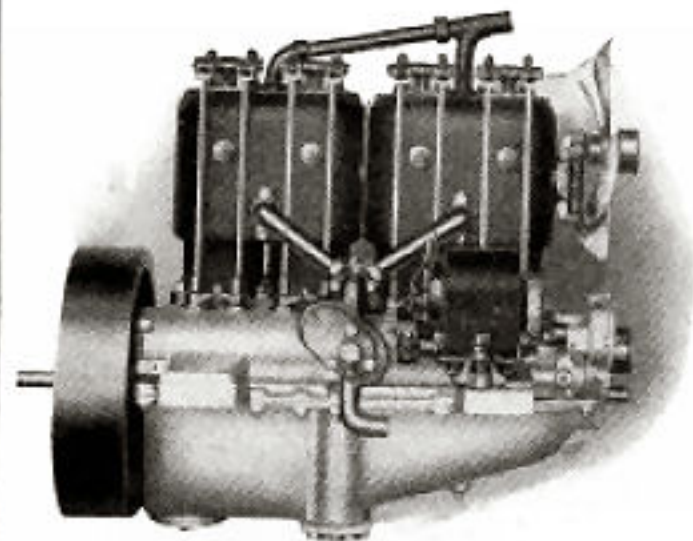
CONTROL—Foot pedals for service brake and clutch, side lever for change gear, side lever for emergency brake.

DRIVE—Shaft.

GASOLINE CAPACITY—23 gallons.

# M E C H A N I C A L      F E A T U R E S

## OF MODELS 16 AND 17



Right side Model 17 Motor showing push rods, rocker arms, water pump, oil reservoir and oil pump.

**MOTOR**—The motor is composed of four vertical cylinders cast in pairs, the well known **Buick valve in the head construction** being employed. The **ease** and **quickness** with which the valves can be removed should be mentioned. The **adjustable fan shaft** is attached to the motor and not to the radiator. The absence of oil pipes is also an advantage when one wishes to clean or remove any part. The gear pump on the right side of the motor is large and gives fast and free water circulation.

**ENGINE BEARINGS**—The engine bearings in this motor are very large and if a sufficient amount of oil is kept in the reservoir one needs not worry about taking up the connecting rods or other bearings after the car has been run a short time.

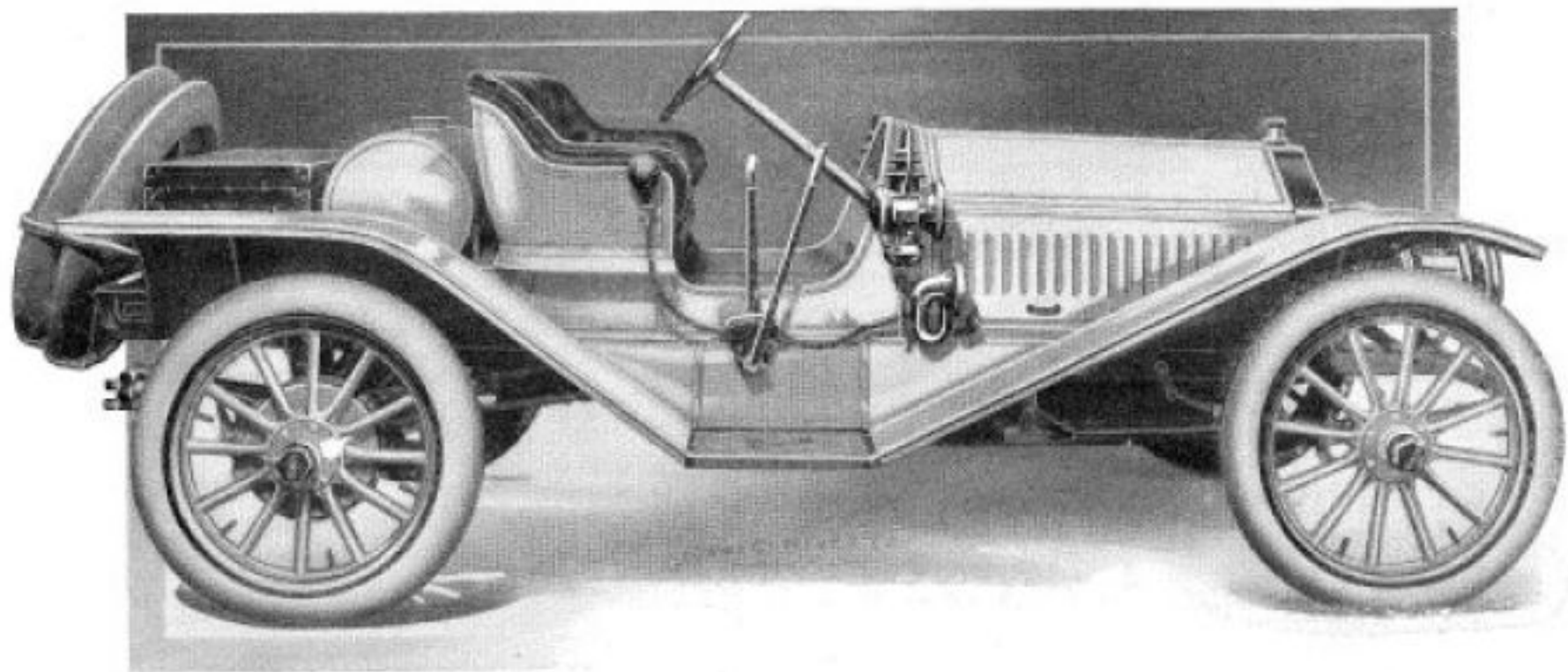
**CAM SHAFT**—A single cam shaft operates both the inlet and exhaust valves. All of the cam shaft and magneto gears are enclosed and run in oil.

**IGNITION SYSTEM**—The current is supplied by a Remy magneto which is simple and effective. So that there can be no mistake as to which binding posts the various cables go, each cable has a different color and the binding posts are also painted. The binding post agreeing with the cable in color should be connected.

A reserve set of dry cells is supplied which furnishes the primary current for starting, and they could also supply the primary current in case something went wrong with the magneto. Both the magneto and battery primary currents travel the same course after reaching the coil box, the circuit breaker and distributor sections of the magneto being used in either case.

Many purchasers, as they go into the automobile question will ask concerning the more vital points of construction, our aim is to put such facts before you as will emphasize the careful design, simplicity and durability of this model.





This price includes trunk, twin tire rack,  
extra size gasoline tank, full  
lamp equipment.

**Price, \$2750**

F. O. B. Factory

**BUICK Model 6**  
ROADSTER

# S P E C I F I C A T I O N S

## MODEL "6"

BODY—Roadster.

SEATS—Two persons.

WHEEL Base—113 inches.

GAUGE—Standard.

TIRES—36 x 4 inches in front; 36 x 4 1/2 inches in rear,  
Michelin.

BRAKES—Internal expanding and external contracting on hub.

SPRINGS—Platform in rear; semi-elliptic in front.

FRAME—Pressed steel.

STEERING GEAR—Irreversible type.

HORSE POWER—Fifty.

CYLINDERS—Four, cast in pairs. Bore 5 in., stroke  
5 in., side valve construction.

MOTOR SUSPENSION—Sub-frame.

COOLING—Water. Gear pump.

IGNITION—Remy magneto and dry batteries.

CARBURETOR—Schebler.

LUBRICATION—Circulating oil feed.

CLUTCH—Cone.

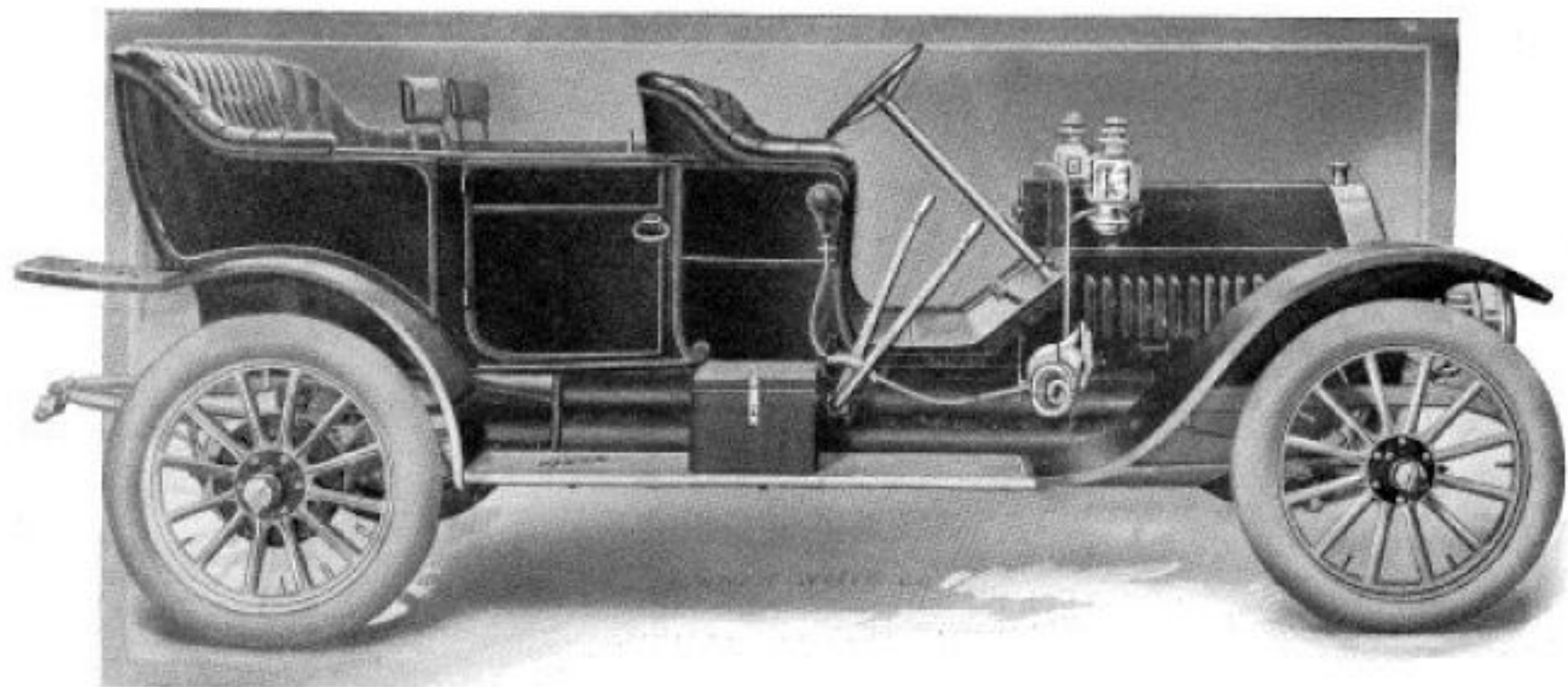
MOTOR CONTROL—Spark and throttle lever on top  
of steering wheel.

CHANGE GEAR—Selective.

CONTROL—Foot pedals for service brake, side lever for  
change gear, side lever for emergency brake.

DRIVE—Shaft.

GASOLINE CAPACITY—30 gallons.



Full lamp equipment

**Price, \$2750**  
F. O. B. Factory

**BUICK Model 7**  
TOURING CAR

# S P E C I F I C A T I O N S

## MODEL "7"

BODY—Touring Car.

SEATS—Seven persons.

WHEEL BASE—122 inches.

GAUGE—Standard.

TIRES—36"x4" in front; 36"x4½" in rear, Michelin.

BRAKES—Internal expanding and external contracting on hub.

SPRINGS—Semi-elliptic.

FRAME—Pressed Steel.

STEERING GEAR—Irreversible type.

HORSE POWER—Fifty.

CYLINDERS—Four, cast in pairs. Bore 5", stroke 5", side valve construction.

MOTOR SUSPENSION—Sub-frame.

COOLING—Water. Gear pump.

IGNITION—Remy magneto and dry batteries.

CARBURETOR—Schebler.

LUBRICATION—Circulating oil feed.

CLUTCH—Cone.

MOTOR CONTROL—Spark and throttle lever on top of steering wheel.

CHANGE GEAR—Selective.

CONTROL—Foot pedals for service brake, side lever for change gear, side lever for emergency brake.

DRIVE—Shaft.

GASOLINE CAPACITY—23 gallons.



BUICK MOTOR CO.

FLINT, MICH.

The Mutual Horse  
Chicago