

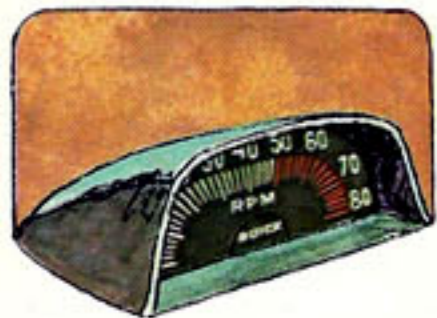
GSX BY BUICK!



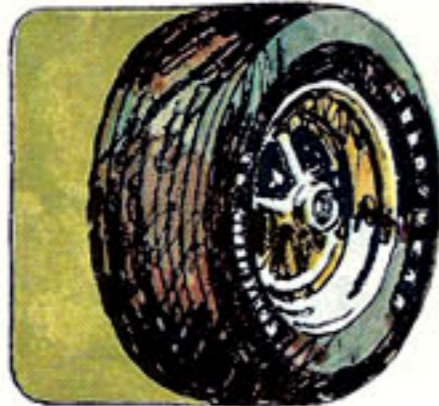


MEET A BRAND-NEW BRAND OF BUICK...GSX

GSX shown in Saturn Yellow. Also available in Apollo White.



HOOD TACH! Be able to tell engine RPM's at a glance with the hood-mounted tachometer. It lets the driver know what his powerplant is doing for him and when it's the proper time to shift. Illuminating level can be varied along with other instrument lighting by adjusting the headlamp rheostat.



BILLBOARDS! Traction is improved with fat, wide-tread G60-15 tires mounted on big 15-inch chrome-plated wheels that are a full 7 inches wide. Large white billboard letters provide the sporty appearance.



SPOILERS! Stylish, molded fiberglass rear deck spoiler acts with the front spoiler which is tucked under the bumper of every GSX. They help keep the front and rear end down for improved traction and handling.

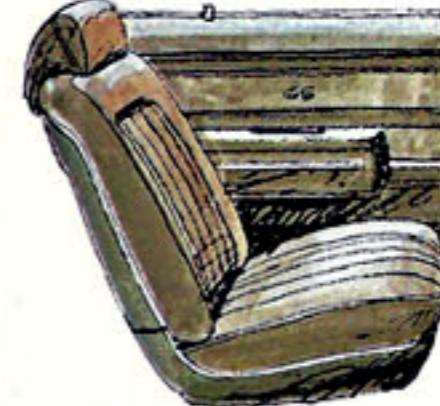


SPORTS MIRRORS! Two outside rear-view mirrors let the driver know what is going on behind. Streamlined protective covers are painted to match the car. The driver's side Sports Mirror is easily adjustable by remote control from inside the car.

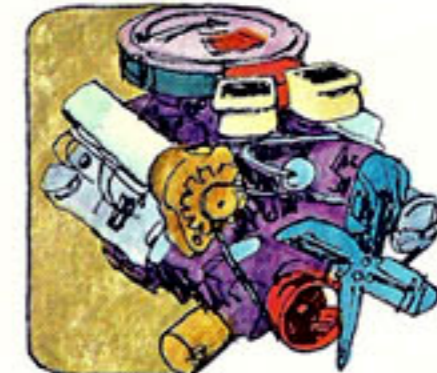


4-SPEED BOX!

This close-ratio 4-speed manual transmission provides responsive performance. Shifting is easy because it is fully synchronized in all forward gears. The smooth-operating Hurst linkage is standard. A floor-mounted console ette adds sports car flavor. Three-speed Turbo Hydra-matic 400 automatic transmission with operating console is available.



BUCKETS! Soft, supple, all-vinyl, custom-padded bucket seats are standard on the GSX. Black Madrid- and Laredo-grain vinyl are tastefully combined to create a stylish interior. Special GSX ornamentation is included.



455-4! Deep-breathing 455-cubic-inch powerplant provides 350 horsepower and a new brand of Buick performance. In addition, there is the Stage 1 option available which develops 360 horsepower and a maximum torque of 510 pounds feet.

MORE! MORE! MORE!

Buick puts even more standard equipment into the GSX. A rallye clock and engine operating gauges. A 15-inch-diameter vinyl-covered rallye steering wheel. Special, quick-ratio variable ratio power steering is available. A 3.42 ratio positive traction rear axle. Power front disc brakes. Heavy duty cooling. Buick GSX performance car handling is the result of several more features like large diameter front and rear stabilizer bars, heavy duty front and rear shock absorbers, firm ride control arms and control arm bushings. And special GSX ornamentation inside and out. GSX... Something to Believe In!

BUICK GSX SPECIFICATIONS

ENGINE	Standard	Available Stage 1 Option
Type	90° V-8	90° V-8
Valve Arrangement ..	In-head	In-head
Bore and Stroke (inches)	4.3125x3.90	4.3125x3.90
Displacement (cu. in.)	455	455
Compression Ratio	10.0:1	10.5:1
Horsepower at Engine RPM ...	350 @ 4600	360 @ 4600
Torque (lbs.-ft. at Engine RPM) ...	510 @ 2800	510 @ 2800
Valves:		
Intake (dia. in.) ..	2.005-1.995	2.005-1.995
Exhaust (dia. in.) ..	1.630-1.620	1.630-1.620
Camshaft	Intake Exhaust	Intake Exhaust
Lift (in.)3891 .4602	.490 .490
Duration (degrees) ...	290 322	316 340
Overlap (degrees) ...	67	90
Tappets	Hydraulic	Hydraulic
Carburetion:		
Make	Roch. Quadra-jet	Roch. Quadra-jet
Type	4-barrel	4-barrel
Primary Bores (in.) ...	1.375 dia.	1.375 dia.
Secondary Bores (in.) ...	2.250 dia.	2.250 dia.
Exhaust	Dual-Low Restriction	Dual-Low Restriction

DIFFERENTIAL Type: Positive Traction—Limited Slip. Ring Gear Diameter (inches): 8.500. Final Drive Gear Ratios: GSX, 3.42, GSX Stage 1, 3.64, 3.42 with A/C.

CLUTCH Type: Dry. Total Spring Load (pounds): 2450-2750. Outside/Inside Diameter (inches): 11.0/6.5. Total Effective Area (square inches): 123.7. Lining Thickness (inches): .140.

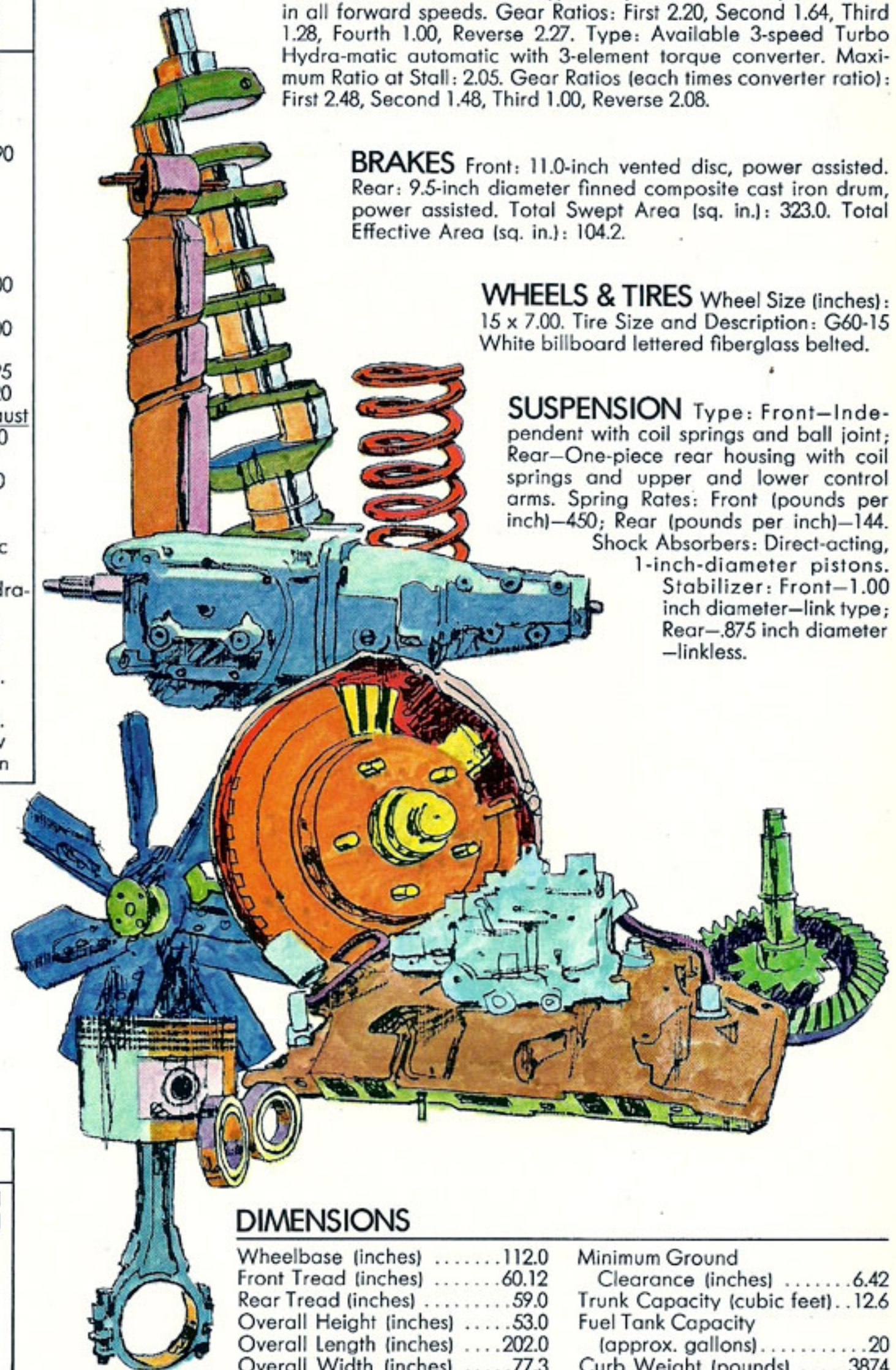
STEERING	MANUAL	AVAILABLE POWER
Gear Ratio	24:1	14.6:1 to 11.0:1
Overall Ratio	28.6:1	17.0:1 to 13.6:1
Turning Circle (curb-to-curb) (feet) ..	39.9	39.9
Wheel Turns (lock-to-lock)	5.6	3.4
Wheel Diameter (inches)	15	15

TRANSMISSIONS Type: 4-speed manual—synchronized in all forward speeds. Gear Ratios: First 2.20, Second 1.64, Third 1.28, Fourth 1.00, Reverse 2.27. Type: Available 3-speed Turbo Hydra-matic automatic with 3-element torque converter. Maximum Ratio at Stall: 2.05. Gear Ratios (each times converter ratio): First 2.48, Second 1.48, Third 1.00, Reverse 2.08.

BRAKES Front: 11.0-inch vented disc, power assisted. Rear: 9.5-inch diameter finned composite cast iron drum, power assisted. Total Swept Area (sq. in.): 323.0. Total Effective Area (sq. in.): 104.2.

WHEELS & TIRES Wheel Size (inches): 15 x 7.00. Tire Size and Description: G60-15 White billboard lettered fiberglass belted.

SUSPENSION Type: Front—Independent with coil springs and ball joint; Rear—One-piece rear housing with coil springs and upper and lower control arms. Spring Rates: Front (pounds per inch)—450; Rear (pounds per inch)—144. Shock Absorbers: Direct-acting, 1-inch-diameter pistons. Stabilizer: Front—1.00 inch diameter—link type; Rear—.875 inch diameter—linkless.



DIMENSIONS

Wheelbase (inches)	112.0	Minimum Ground Clearance (inches)	6.42
Front Tread (inches)	60.12	Trunk Capacity (cubic feet) ..	12.6
Rear Tread (inches)	59.0	Fuel Tank Capacity (approx. gallons)	20
Overall Height (inches)	53.0	Curb Weight (pounds)	3874
Overall Length (inches)	202.0		
Overall Width (inches)	77.3		