



SCREAMING EAGLE



THE 1990 EAGLE TALON: FIRST FLIGHT FALL 1989.

From Eagle, the brand of automobiles dedicated to inspiring driver confidence, comes an entirely new kind of driving excitement that will inspire your dreams. Because, frankly, *this Eagle's gonna scream.*



Flight Performance. A quick study of Eagle Talon's performance credentials sets your sights for the flight at hand. Two 16-valve DOHC powerplants are available, one turbocharged with intercooler. Jewellike precision 5-speed transmission or advanced automatic 4-speed overdrive available on non-turbo models. Quick-ratio power steering. Independent suspension. Four-wheel power disc brakes. 16-inch wheels and matching 55 series Goodyear Eagle® GT + 4 tires.

Some of the equipment shown or described throughout this brochure is available at extra cost.

About this brochure. Since the time of printing, some of the information you'll find here may have been updated. See your dealer for details.

21st Century 2 + 2. Eagle Talon echoes the very best in classic sports coupes yet advances a level of technical innovation that takes the concept into the next century.

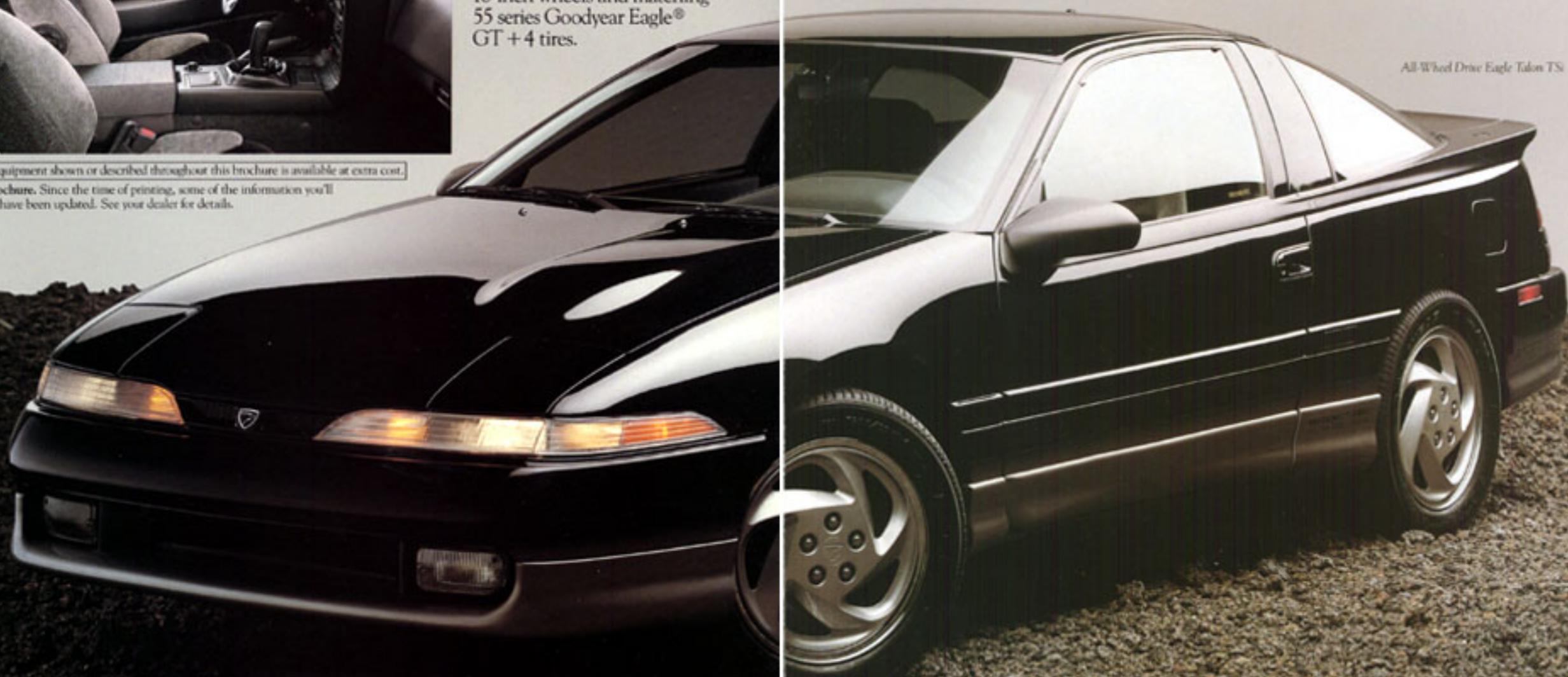
Talon's driver-oriented cockpit offers analog gauge instrumentation and the classic touch of available leather on seats, steering wheel, and shifter grip.

Talon's internationally inspired styling evokes a breathtaking response, both in terms of aesthetic appreciation and the way its integrally designed aerodynamics (cd = .29 Talon TSi) promote exhilarating performance.

All-Wheel Drive. In addition to the standard front-drive configuration, there's also an all-wheel drive Talon TSi for the ultimate in sophisticated road handling and driver control. Eagle Talon TSi represents the first and only all-wheel drive sports coupe ever offered by Chrysler Motors.

EAGLE
TALON
ALL WHEEL DRIVE

All-Wheel Drive Eagle Talon TSi



ANATOMY OF A NEW KIND OF EAGLE.

THE HEART. The power that makes this Eagle scream comes from a 2.0 litre 16-valve double overhead cam intercooled turbocharged engine. Its turbocharger offers a maximum 11.06 psi of boost, enabling this advanced powerplant to produce 195 horsepower @ 6000 rpm and 203 lb-ft of torque @ 3000 rpm.

Four valves per cylinder and a cross-flow port design (2 intake, 2 exhaust) increase air and fuel flow for greater power and torque. Its double overhead camshaft design boosts rpm capability while reducing internal friction. Combustion chambers are of pent-roof design, which provides the desired fuel mixture flow and turbulence for optimum performance. An electronically controlled, sequential multi-point fuel injection system (one injector per cylinder) precisely manages fuel and air for optimum responsiveness, smoothness, and efficiency.



Talon TS's 2.0 litre 16-valve DOHC turbo produces 195 horsepower @ 6000 rpm and 203 lb-ft of torque @ 3000 rpm.



Engineered technical innovation permits Talon TS's 2.0 litre 16-valve DOHC engine with intercooled turbocharging to deliver the highest output of any production turbo of its size—yet do so with remarkable smoothness, quietness, and efficiency.

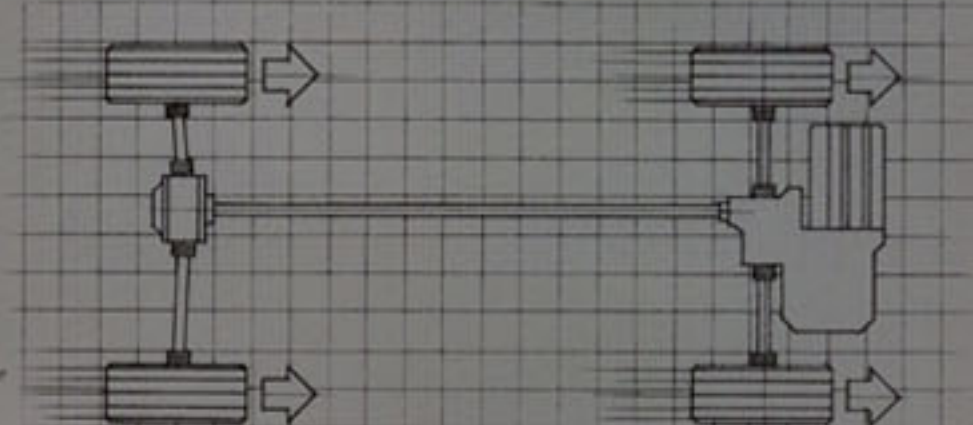
Harnessing the energy of its exhaust gases, Talon TS's lightweight turbocharger creates the ideal conditions for producing a more powerful combustion in each firing chamber. Its air-to-air intercooler raises intake density to improve combustion and maximize engine output. And the turbine impeller's low rotary inertia force helps to eliminate "lag" and provide instantaneous throttle response.

Among the innovations incorporated by Talon TS's engineers is the dual engine stabilizer design ("silent shafts"), which effectively cancels out engine vibration before it starts. Roller-type rocker arms reduce friction, contributing to efficiency and torque from idle to peak output. And the camshaft itself is driven by a cog-type rubber belt drive for smooth, quiet operation that is literally unheard of in a high-performance engine of this type.

THE GRIP. Nature has carefully engineered the eagle's claw (the talon) to provide its tenacious gripping strength. Now, Eagle Talon TSi with all-wheel drive gives this advanced Eagle its ultimate road-gripping performance in virtually all driving conditions. Improved traction is derived by distributing the force of the 16-valve turbo powerplant to all four wheels.

By distributing the force to all four wheels, wheel slippage is minimized and vehicle stability enhanced. (Experience this improvement during a simple turning maneuver.)

Talon = Grip = Control. All wheel drive distributes the force of Talon TS's 16-valve turbo to all four wheels, improving vehicle handling and stability.



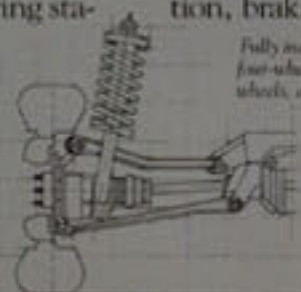
A center-mounted viscous coupling helps provide a limited-slip feature for the center differential between front and rear axles. If, in driving over wet or icy surfaces, one of the axles begins to slip and rotate quickly, the all-wheel drive system automatically distributes torque to the axle with the most traction—allowing the spinning wheel to regain adhesion much sooner.

THE INSTINCTS. A fully independent suspension system, specially modified for all-wheel drive, provides the ideal framework for Eagle Talon TS's high-performance orientation. The front end features MacPherson struts, extra-firm coil springs, stabilizer bar, and lower control arms with an "anti-dive" design to maintain vehicle attitude during severe braking. A negative offset steering geometry automatically corrects steering stability for optimum tracking over uneven road surfaces. The independent rear suspension features a trailing arm design, coil springs, and stabilizer for a firm, smooth ride.

To harness Talon's driving forces, power disc brakes are positioned at all four wheels. Front

disc rotors are ventilated to resist fade due to heat buildup, while the rear brakes provide higher rigidity than those of conventional design.

Sixteen-inch wheels combine with 205/55VR16ASR Goodyear Eagle® GT + 4 black sidewall high-performance all-season radial tires to provide Eagle Talon TSi with outstanding road adhesion during acceleration, braking, and cornering maneuvers.



Fully independent suspension, four-wheel disc brakes, 16-inch wheels, and 205/55VR16ASR Goodyear Eagle® GT + 4 high-performance tires enhance Talon TS's performance credentials.

THE INTELLIGENCE. "With information, comes control."

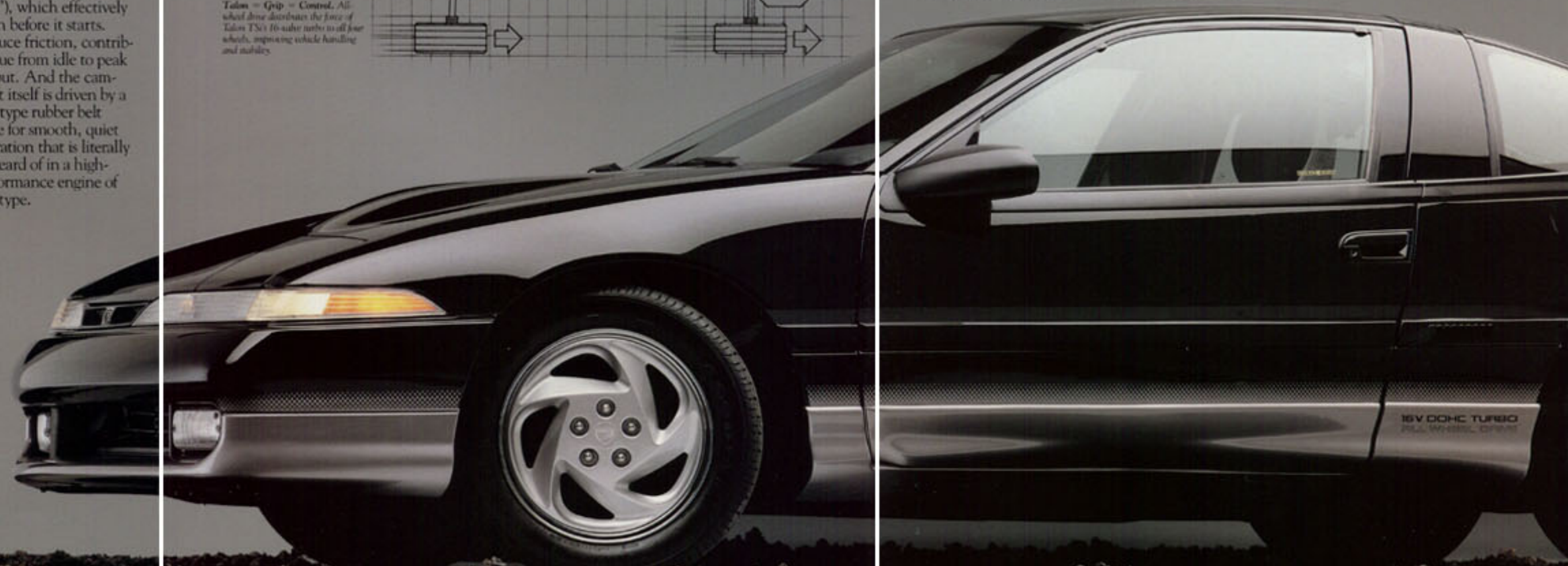
Thus, the logic of Talon's cockpit design defines its dedication to inspiring driver confidence. Careful attention to ergonomics results in instruments that are in clear view and controls within easy reach. Large, easy-to-read analog gauges, including 145-mph speedometer, 9000-rpm tachometer with 7000-rpm redline, and turbo-boost gauge, keep the driver fully apprised of performance data.

Talon's ergonomically defined cockpit features easy-to-read analog instrumentation with large speedometer and tachometer gauges, leather-wrapped steering wheel, and skidally positioned leather knob for shift grip.



A leather-wrapped steering wheel puts you in touch with the positive road feel of Talon's "quick-ratio" rack-and-pinion steering system. The pistol-grip 5-speed shifter, also covered in leather, moves smoothly with fingertip precision.

Intelligent seat design befits Talon TS's driving character with driver's seat adjustments for lumbar and thigh support, as well as side bolsters and cushion height. All seats are covered in cloth fabric as standard, or with optional genuine leather facings.



**EAGLE
TALON**
16V DOHC TURBO
ALL WHEEL DRIVE

The ultimate source of driver confidence is overall vehicle quality. We're so confident of the quality of the entire line of Eagle automobiles, including the all-new 1990 Eagle Talon, that every new Eagle model is backed by Chrysler's world-famous 7/70 Protection Plan. Upon expiration of the

12-month/12,000-mile basic new vehicle limited warranty, limited warranty coverage is extended to 7 years or 70,000 miles on powertrain components and to 7 years or 100,000 miles on outerbody rust-through.

Restrictions apply. See limited warranty at your dealer for details.

7/70

THE PROTECTION OF EAGLES.



EAGLE TALON

For information on the location of your nearest Jeep and Eagle dealer, call toll-free: 1-800-JEEP-EAGLE.

Certain models, packages, and options are subject to specific restrictions, requirements, or late availability. See your dealer for details.

