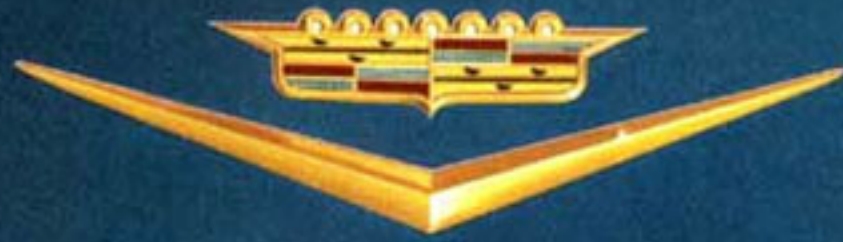


1958



Paradilla



Motordom's Masterpiece

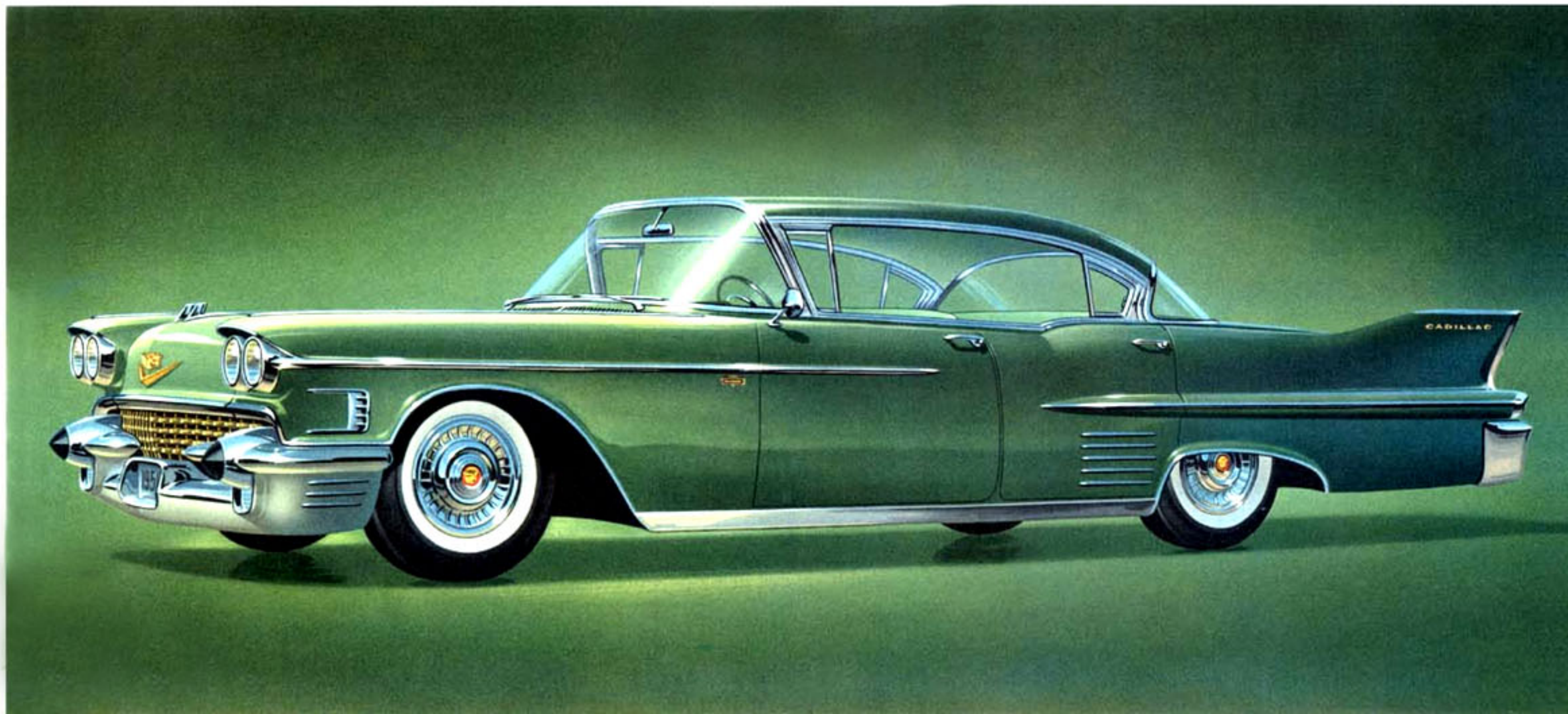




There is a natural distinction in the simple elegance of the Sixty-Two Coupe for 1958. Every sculptured-in-steel contour and every touch of chrome, stainless steel or brushed aluminum has been skillfully designed to achieve an enduring and timeless motor car. Powered, as is every Cadillac, by a spectacular new high-performance engine and an even smoother, more responsive Hydra-Matic transmission . . . and offering, as an option at extra cost, the marvelous new balance and ride of Cadillac air suspension . . . the 1958 coupe provides brilliant performance, exceptional luxury and extraordinary beauty. Yet, it is the most modestly priced of all Cadillacs.

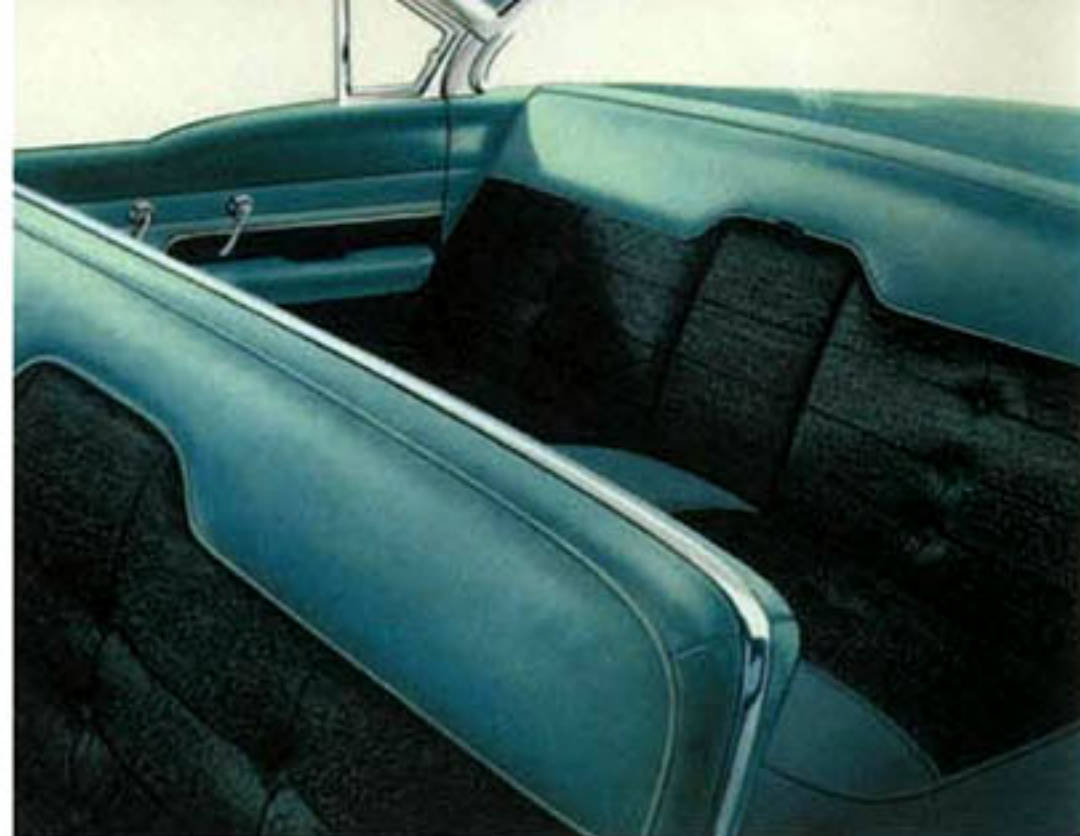
Coupe interiors reflect the finest in discriminating taste. Interior fabric colors are available in white and black . . . light gray . . . light blue . . . bronze and black . . . beige . . . turquoise and black . . . and light green.

sixty-two sedan



Here, in the Sixty-Two Sedan, is an excellent example of Cadillac skill and craftsmanship in creating a motor car of inspiring beauty. It is, beyond conjecture, a rare masterwork in everything that makes an automobile desirable. The interiors are more generously proportioned, more beautifully appointed and more luxuriously executed than ever before . . . and the new rear quarter ventilation windows on all sedan models add immeasurably to the car's beauty and to the convenience and comfort of rear seat passengers.

A wide selection of fabric patterns and colors is offered in the Sixty-Two Sedan. Among them are bronze and black Moroccan cloth with bronze Elascofab . . . light green . . . light gray . . . beige . . . and light blue Venetian and Victoria cloths.



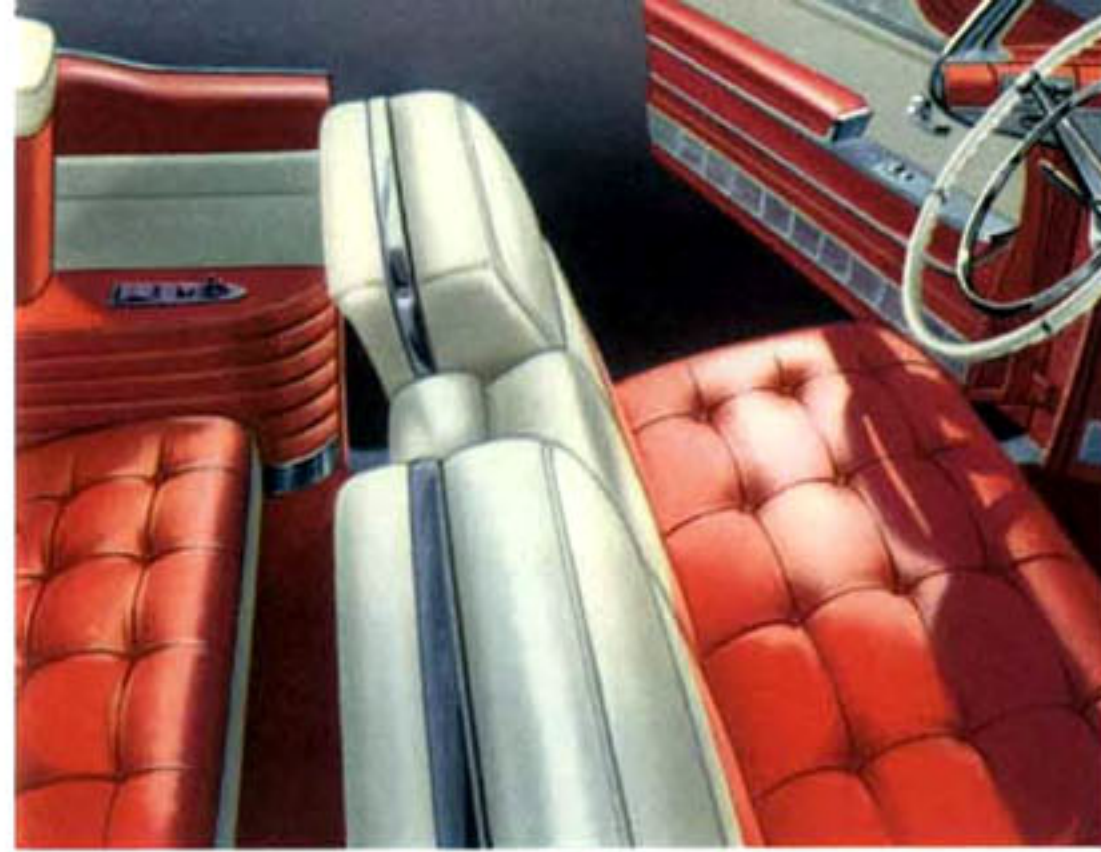
sixty-two
sedan
extended deck



Probably in no other body style is Cadillac's new look of greater width and sweeping length more readily evident than in the new extended-deck Sixty-Two Sedan. This newly introduced model offers superb riding comfort . . . wonderful stability and handling ease . . . and marvelous economy of ownership. Its dependability, safety and spaciousness make it ideal as a family car.

The strikingly beautiful interiors of the extended-deck sedan are styled in the same fine fabrics . . . materials . . . and appointments found in the Sixty-Two Coupe and Sedan. All have been created and crafted by Fleetwood artisans.

sixty-two convertible



The popular Sixty-Two Convertible presents the 1958 Cadillac in its fullest beauty. In the fresh flair of its dramatic styling . . . in the superb performance of its power-assisted driving controls . . . and in the incomparable elegance of its interiors, there is positive assurance that this motor car will be prized and desired for years to come. The Sixty-Two Convertible is powered by the dynamic new Cadillac engine and offers all of Cadillac's newest engineering advancements. It is, indeed, motordom's masterpiece for nineteen fifty-eight.

More glamorous than ever before, the Sixty-Two Convertible interiors offer selections of finely grained saddle leather in natural tan . . . black and ivory . . . black . . . ivory and light blue metallic . . . bronze metallic . . . ivory and light green metallic . . . an ivory and red combination and solid red. Painted portions of the interiors are finished in harmonizing colors.





sedan de ville



The Sedan de Ville for 1958 provides a brilliant and original interpretation of Cadillac styling. Its completely new profile and interior elegance mark it as one of the most dramatic and inspiring motor cars of all time. Its four headlamps enhance the dazzling new grille and produce exceptional illumination on the highway. Its distinctive new rear fender design . . . its tasteful use of chrome and color and its beauty of appointments mark it as a singularly beautiful motor car.

Magnificent interiors include—silver and black Calcutta cloth with ivory leather . . . silver or blue Westminster cloth with silver or blue metallic leather . . . gray Mojave cloth and gray leather . . . bronze and black Sierra cloth with metallic bronze leather . . . beige or green Tunisian cloth and beige or green leather . . . turquoise and black Calcutta with turquoise leather . . . taupe . . . and black Sierra cloth and taupe leather.



coupe de ville



The Coupe de Ville is a remarkable example of contemporary styling and design combined with traditional beauty and luxury. Its extraordinary new grace and symmetry and the new long sweep of its fender lines leave no doubt that this is motordom's masterpiece in styling. And, unquestionably, a single journey at the wheel will tell you why it is motordom's masterpiece in performance. As on every Cadillac model for 1958, you may, in the Coupe de Ville, enjoy the miraculous new riding comfort of Cadillac air suspension—an option at extra cost.

A single glance at the magnificent new interior of the 1958 Coupe de Ville will convince you that this is a masterpiece in luxury. You will find the same exciting fabrics and leathers offered in the companion Sedan de Ville . . . new elegance of appointments . . . a completely new instrument panel design . . . and a host of new conveniences.

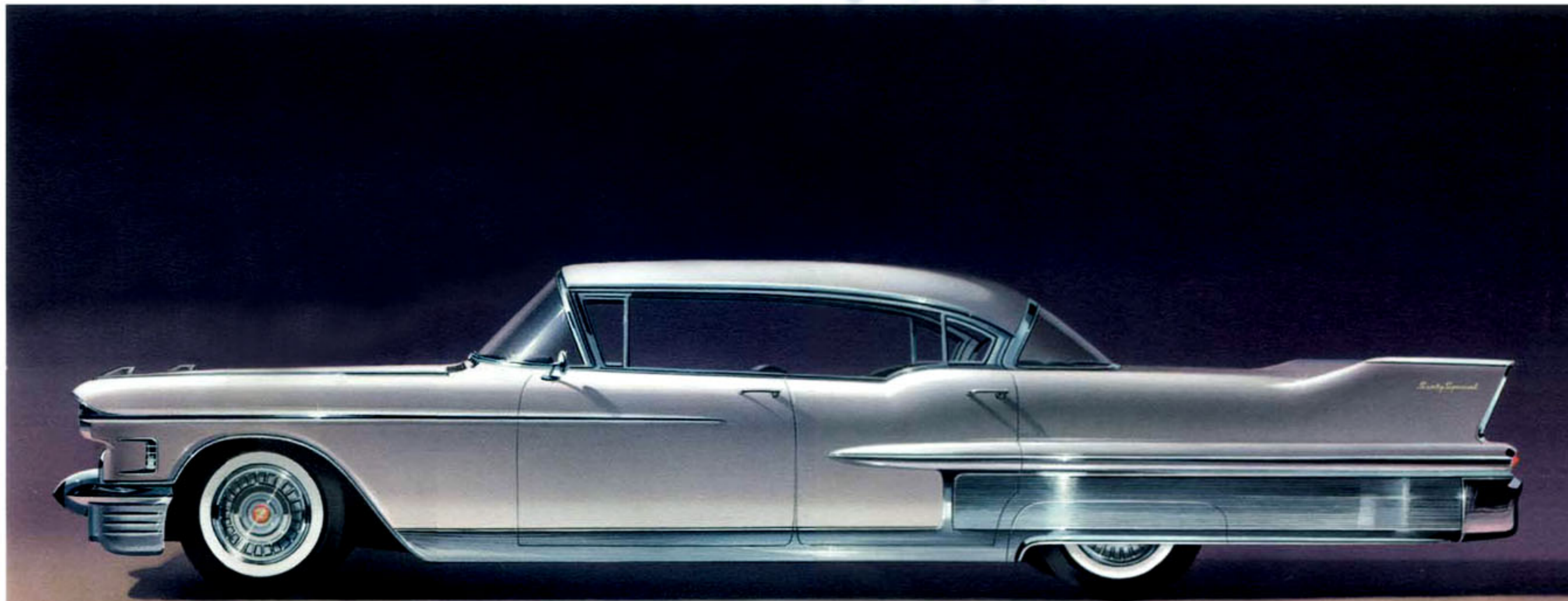


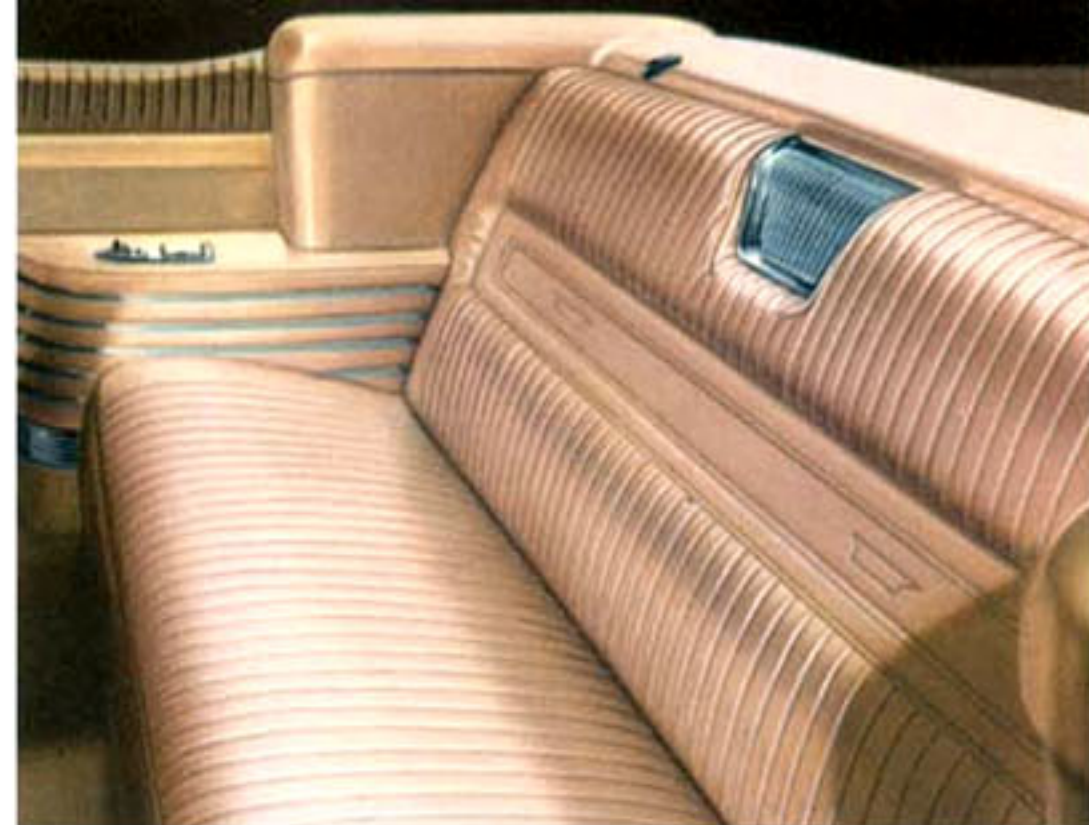
fleetwood sixty special sedan



The new Fleetwood Sixty Special Sedan is a culmination of the refined techniques and styling genius of Fleetwood craftsmen. This illustrious, long-wheelbase sedan bears many distinguishing design features to emphasize its exclusive character. The lower rear fender embodies a single flowing panel of ribbed anodized aluminum with a molding of stainless steel . . . there is a matching wheel opening cover. The spacious new interior appointments and furnishings are luxurious and gracious in every detail, with every motoring convenience in constant attendance—even the front ventipanes are now power operated.

The distinctive and tasteful interiors of the Fleetwood Sixty Special are upholstered in subdued tones of light gray . . . light blue . . . or beige Mojave cloth or in light gray . . . light blue . . . or beige broadcloth, and in seven beautiful selections of exclusively patterned nylon and metallic leather.





eldorado biarritz



The Cadillac Eldorado Biarritz for 1958 blends the automotive design of tomorrow with today's finest engineering. Its custom design is distinguished by individual treatment of rear fender panels and fins . . . by single-winged ornaments on the front fender crowns . . . by a broad chromed molding accenting the rear wheel opening . . . and by dramatic chrome rear panels that curve gracefully into the rounded rear deck. A special high-performance engine combines with every known motoring advancement to make each journey an exciting and rewarding experience. Air suspension is, of course, an option at extra cost.

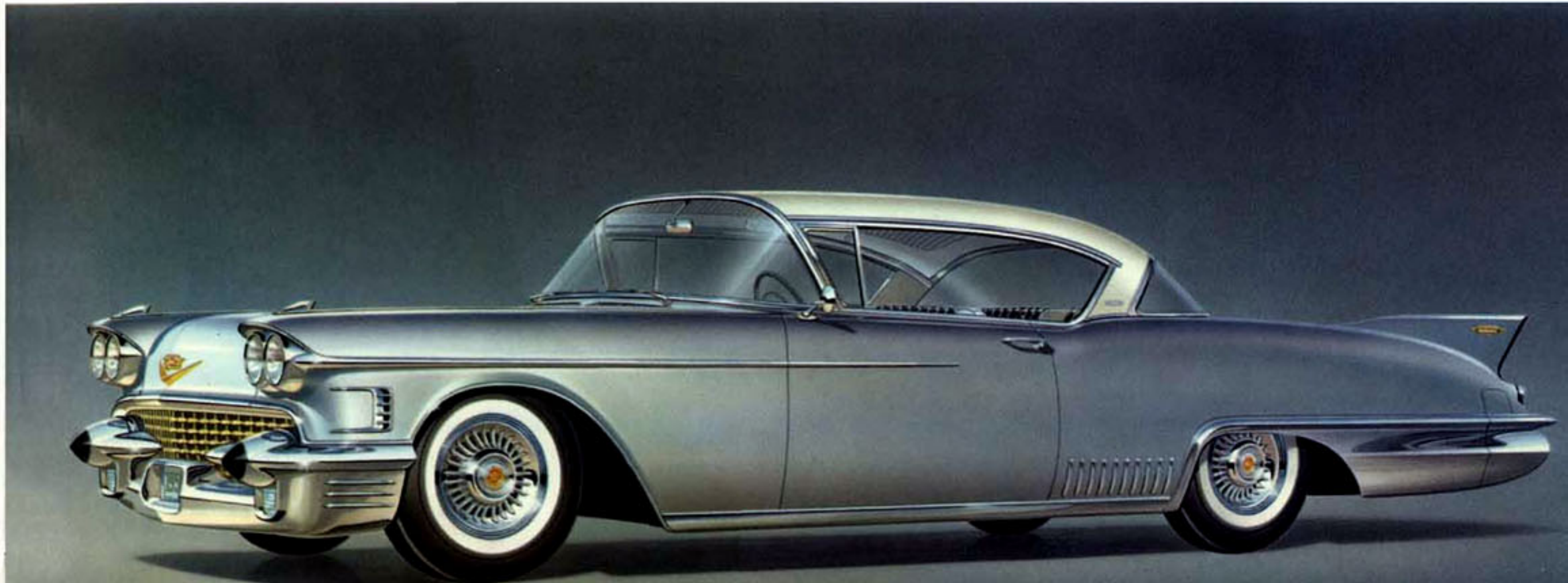
Eldorado Biarritz interiors are truly in a class by themselves. They are offered in imported, deep-grained leathers of copper . . . silver . . . green metallic . . . blue metallic . . . white and black . . . vermillion and white . . . vermillion or black.

eldorado seville



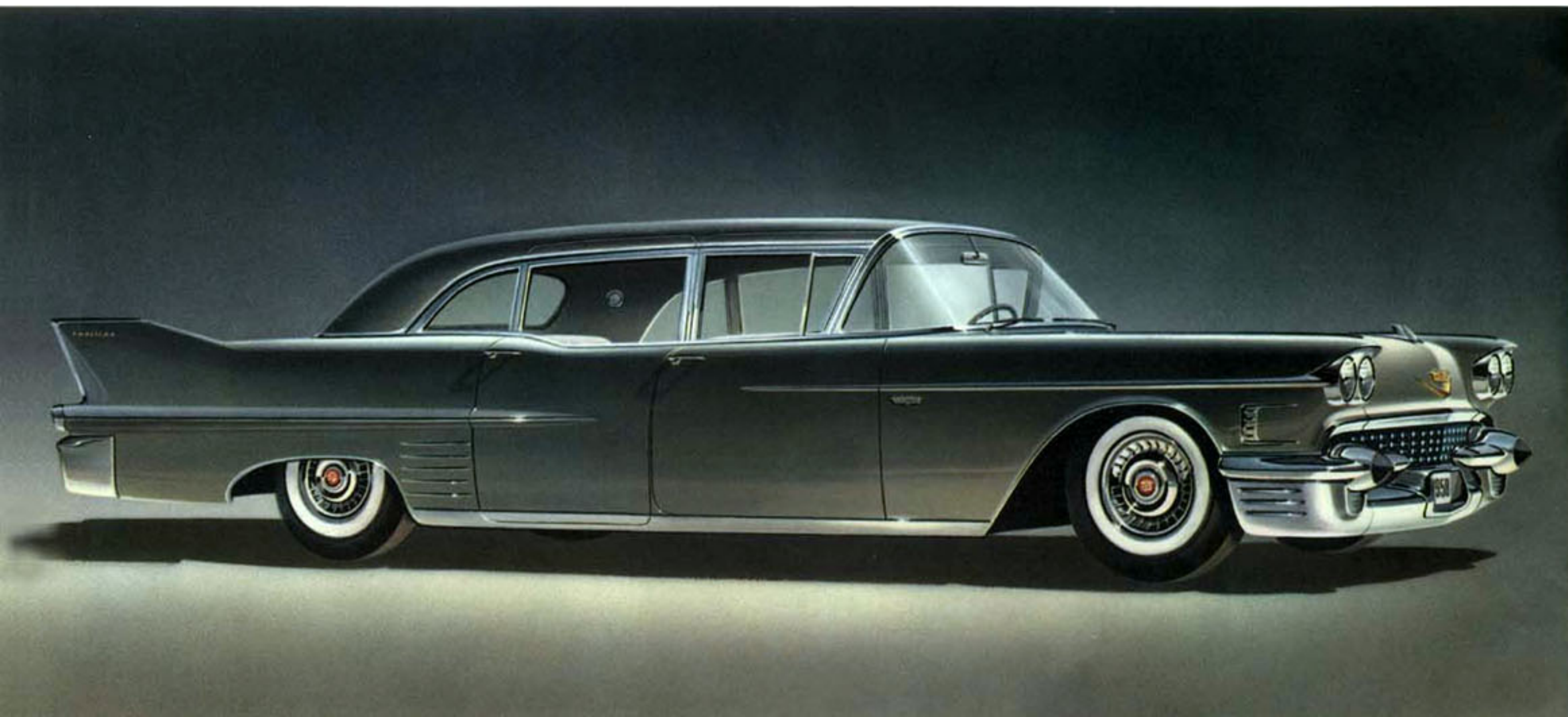
The new 1958 Cadillac Eldorado Seville is a closed version of the spectacular Biarritz. In general appearance, it follows the same daring concept of motor car design. The exterior roof surface of the Seville is finished in durable, weather-resistant Vicodec material, while the interior headlining is handsomely tailored in a modern pattern. The front seat and all windows, including front ventipanes, are power controlled. Vastly improved in every way, the 1958 Eldorado Seville is, most certainly, a motoring dream come true.

Eight interior selections are provided in the Eldorado Seville. They are: black and silver crest cloth with silver leather . . . blue and silver crest cloth with blue metallic leather . . . copper and silver crest cloth or green and silver crest cloth with copper or green metallic leather . . . white and black leather . . . white and vermilion leather . . . and blue or green metallic leather.





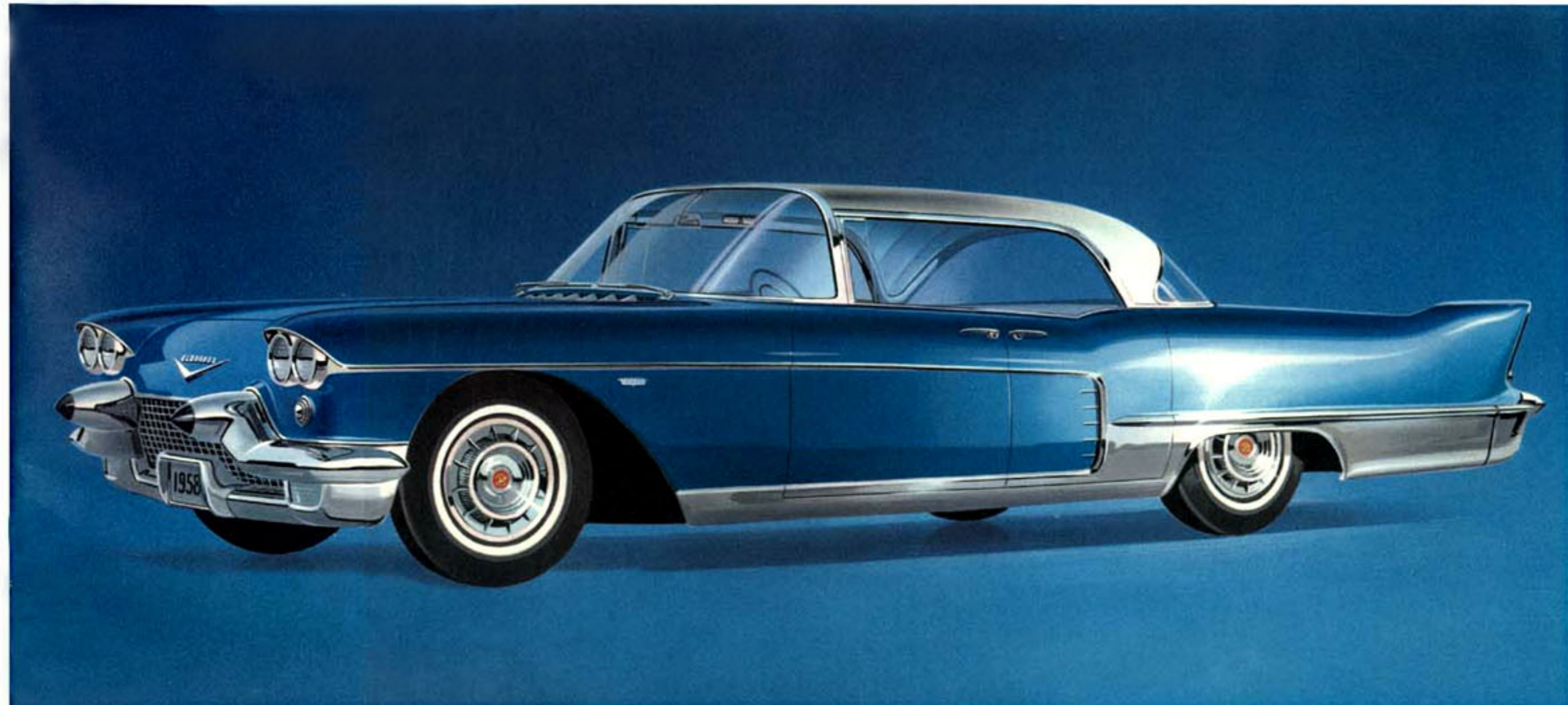
fleetwood seventy-five sedan and limousine



The celebrated Cadillac crest rides proudly on the two models of the 1958 Fleetwood Seventy-Five—the nine-passenger Sedan and the Limousine. New dignity and bearing are evident in every detail of their regal appearance. Their spacious interiors set a new standard of luxury in motor car travel and they are—despite their impressive size—wonderfully responsive, easy to drive and handle, and amazingly economical to operate. Whether you choose the Sedan, or the Limousine with a glass dividing partition, you will possess a car that is both practical and a tribute to your personal discernment.

Immaculately tailored in classic simplicity, Fleetwood Seventy-Five interiors are offered in light gray wool cord and broadcloth . . . light gray broadcloth . . . beige wool cord and broadcloth . . . beige broadcloth . . . dark gray cord and light gray broadcloth . . . or brown cord and beige broadcloth. The Limousine front compartment is finished in black leather.

eldorado brougham

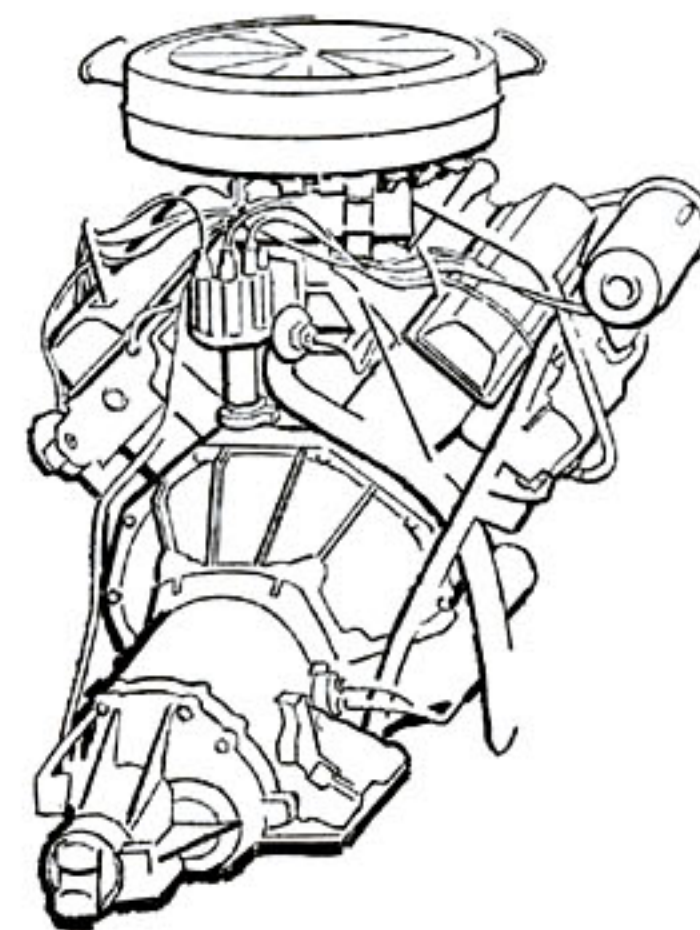


Because of its exclusive, custom-built character, the Eldorado Brougham for 1958 will continue to be built in limited numbers. This dramatically beautiful car—with its brushed stainless steel roof . . . air suspension . . . special engine . . . and many other revolutionary new engineering developments—has been created to be the finest motor car of all time. Cadillac permits no compromise in styling . . . design . . . engineering . . . or in excellence of craftsmanship. Only by making a personal inspection of this car will you understand how markedly advanced the Eldorado Brougham actually is in styling . . . in luxury . . . and in performance.

The custom-crafted interiors of the Eldorado Brougham are exclusively fashioned in the world's finest leathers and fabrics. In all, there are forty-four selections of trims and colors. Carpeting is either nylon Karakul or genuine mouton. The rear armrest is fitted with a vanity mirror and perfume atomizer containing Arpège Extrait de Lanvin.



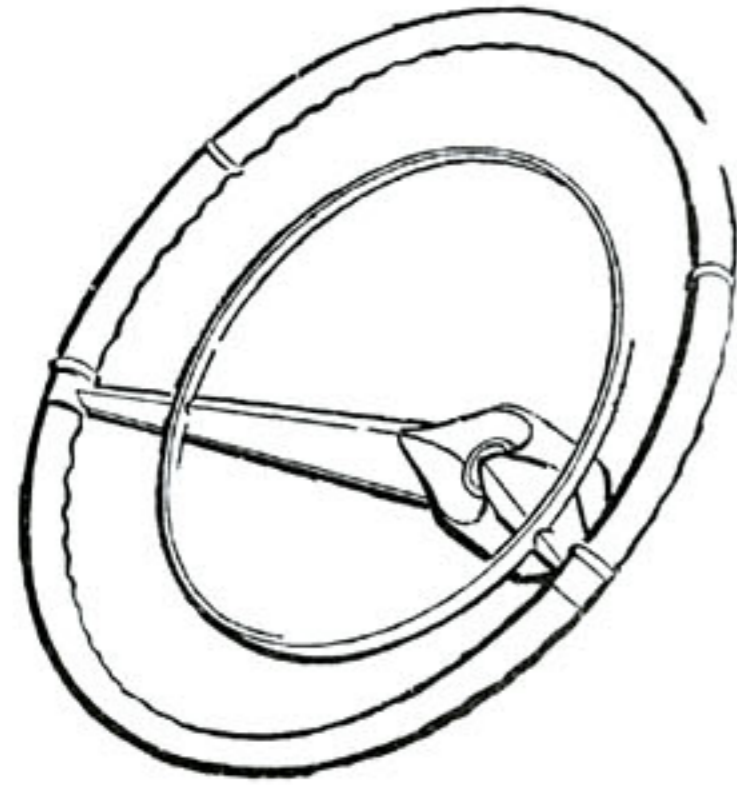
engine and chassis



The new Cadillac V-8 engine is a highly refined, superbly balanced, remarkably economical power plant, specifically engineered to deliver a full 310 horsepower. In combination with Cadillac Hydra-Matic Drive, it provides infinite flexibility in traffic, marvelous smoothness and dependability in operation. A special 335-horsepower engine is installed in all Eldorado models and is available as an option at extra cost on all other Cadillac motor cars for 1958.

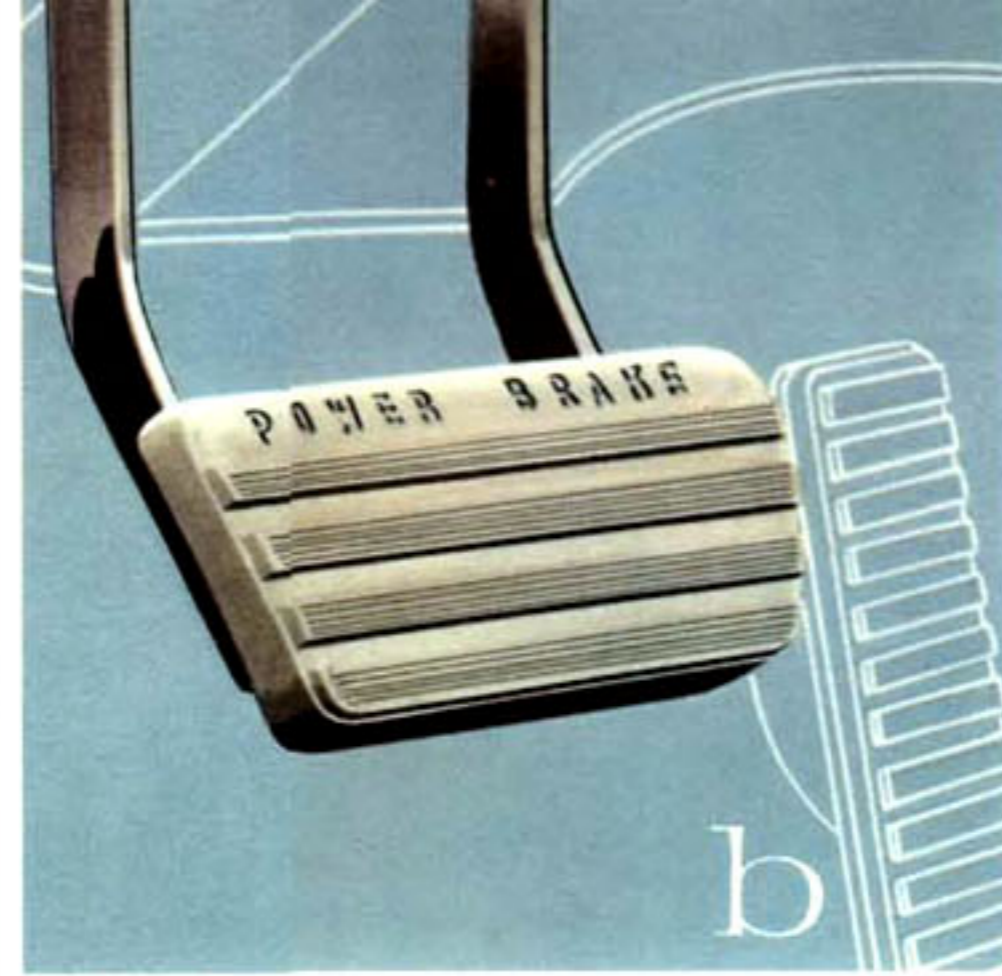
Cadillac's tubular-center X frame permits lowering the car without sacrificing interior roominess . . . provides torsional rigidity . . . and contributes to the stability and quietness of the car. Individual coil springs provide an exceptionally smooth and level ride. And for even greater riding luxury, air suspension is standard on the Eldorado Brougham and is available as an option at extra cost on all other models.

power features and accessories



Standard Power Equipment on All Models

- a. Cadillac Power Steering and spherical joint suspension remove the last noticeable trace of handling effort. Maximum power assistance is obtained precisely when it is needed. All 1958 Cadillac models are equipped with advanced Power Steering at no extra cost.
- b. An improved Cadillac Power Brake is standard, at no extra cost, on all 1958 models. Even larger than last year, it reduces the amount of pedal effort required. The lower braking pedal enables the driver to bring the car to a quick stop with gentle pressure from either foot.
- c. Even Cadillac owners will be amazed at the smoothness and eager responsiveness of the 1958 Cadillac controlled-coupling Hydra-Matic. Mechanical refinements have virtually eliminated noticeable shift points, yet have retained all the efficiency and economy provided by the basic design.



Accessories for your comfort...safety...and convenience

Cadillac Air Suspension

Air suspension is standard equipment on the Eldorado Brougham and optional at extra cost on all other models. It provides a marvelous new riding quality that is unobtainable with conventional springs. The driver may also increase road clearance for driving up a sharply angled ramp by making a simple adjustment of a control on the instrument panel.

Heating and Ventilating System

All Cadillac models may be factory-equipped with a heating and ventilating unit of unusually high efficiency. Simple to operate, the Cadillac heater provides the exact amount of warm air desired for front and rear compartments, as well as heated or cool outside air to the windshield.

E-Z-Eye Glass

Your Cadillac may be equipped with E-Z-Eye Glass—a subtly graduated tint that greatly reduces eyestrain by eliminating annoying road glare. It also filters out much of the sun's radiant heat, yet does not interfere with vision in any way. It may be ordered at nominal cost for all windows in the 1958 Cadillac.

Pre-Selector Radio

The Cadillac Pre-Selector Radio provides a fidelity and long-range reception unique in a motor car radio. Its automatic, precision tuning bar is a feature rare even in home radios. The antenna, which telescopes completely into the fender, rises and lowers at the touch of a button and a foot-operated control switch for simple, safe station changing is also available.

Power Windows and Seats

Cadillac provides power windows and a fore-and-aft power front seat adjustment on the Sixty-Two Convertible, Coupe de Ville, Sedan de Ville, Sixty Special Sedan and Seventy-Five models. A power-operated vertical and seat angle adjustment is available at extra cost. The entire six-way front seat adjustment and power windows are standard equipment on the Eldorado Brougham, Biarritz and Seville, and optional at extra cost on the Sixty-Two Sedans and Coupe. Power-operated front vent window regulators are standard on the Eldorados and Sixty Special Sedan and an extra-cost option on all other models.

Cadillac Air Conditioner

The Cadillac Air Conditioner for 1958 circulates outside air that is filtered of dust and pollen and recirculates interior air that has been cooled to the precise temperature the driver desires. It is standard on the Brougham and extra cost on all other models.

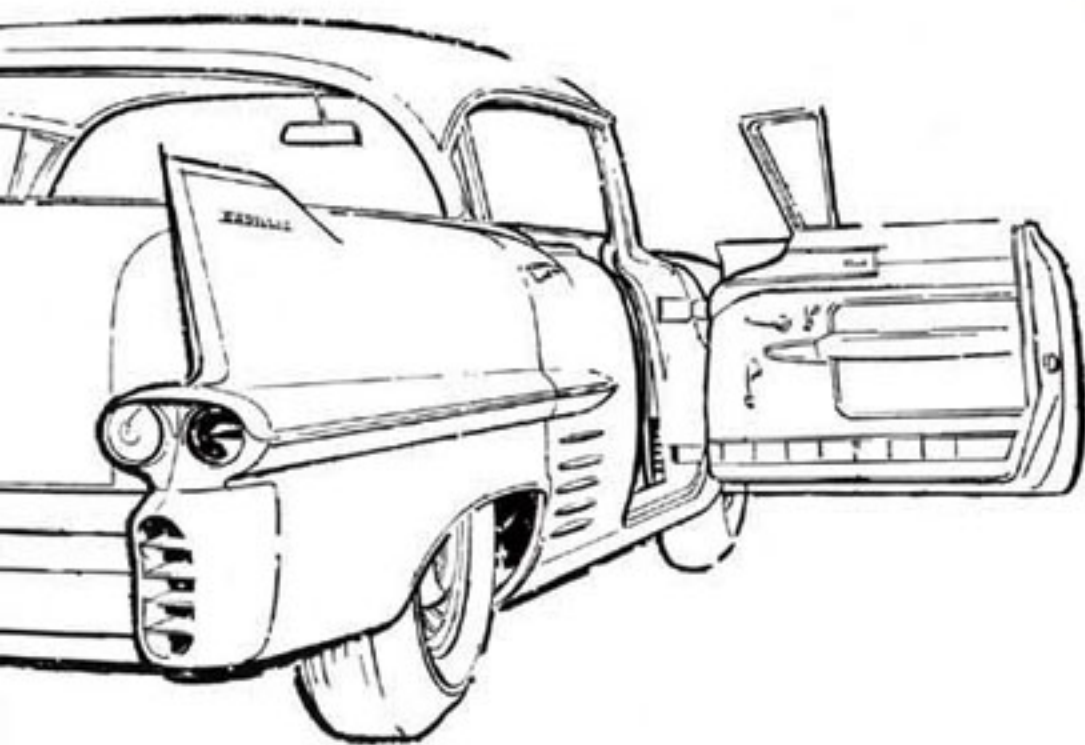
"Autronic-Eye"

The Cadillac "Autronic-Eye", or Automatic Headlight Beam Control, electronically dims your headlights as other cars approach or when you enter a brightly lighted area. The lights then automatically return to high beam after cars pass and the road ahead is clear. A foot switch is provided to dim the headlights when necessary.

Fog Lamps

Cadillac Fog Lamps contribute greatly to safer driving in adverse weather. They are designed to provide illumination low to the surface of the road. This produces better visibility during adverse weather conditions. When installed, Cadillac Fog Lamps replace the standard parking light and directional signal assembly, since they incorporate these functions.

you are invited to see, inspect and drive Motordom's Masterpiece



You have seen, within the pages of this brochure, only a brief coverage of the beautiful 1958 Cadillac motor cars. These new creations are, in every way, a masterpiece of design . . . engineering . . . and styling. But, you will *truly* appreciate their vastly increased comfort, safety, luxury and value when you personally inspect and drive your favorite model. We urge you to make arrangements to do this at your earliest opportunity. It will be a rare motoring experience, one that could come only from Cadillac—motordom's masterpiece for 1958.



specifications

ENGINE: Eight-cylinder, overhead, 90° V type; bore 4.0"; stroke 3.625"; displacement 365 cu. in. Engine mounted in rubber at three points. Compression ratio 10.25 to 1. Three, dual-barrel carburetor engine on Eldorado Biarritz and Seville, available at extra cost on other models.

PISTONS: Aluminum alloy, slipper type to reduce friction surfaces and permit nesting between crankshaft counterweights. Two compression rings, one oil ring with expander; top compression ring chrome-plated to minimize wear on cylinder walls. Recessed contour in piston head increases turbulence and thus assures fast, complete burning of fuel-air mixture.

CARBURETOR: Four-barrel downdraft with equalized manifolding; mechanical fuel pump; dry-pack type air cleaner; intake silencer; automatic choke. Three dual-barrel carburetors provided on the Eldorado engine.

LUBRICATION: Full-pressure. Oil filter standard.

ELECTRICAL SYSTEM: 12-volt.

GASOLINE TANK CAPACITY: 20 gallons.

HYDRA-MATIC DRIVE: Fully automatic, step-gear type. Controlled fluid coupling on forward gear set for smoother shifts. Provides two Drive Ranges, Lo Range and Reverse.

REAR AXLE: Hypoid, semifloating. Differential housing offset to provide straight-line drive. Ratio is 3.07 with 3.36 axle provided with the Eldorado engine, on Series 75, on air-conditioned models and optional on all other models. A 3.77 is optional on Series 75.

FRONT SUSPENSION: Spherical joint with Cadillac independent, helical-coil type springs.

REAR SUSPENSION: Four-link drive. Rear springs are independent, helical-coil type.

AIR SUSPENSION (optional at extra cost): Individual air springs at each wheel automatically adjust to maintain car height for best quality ride, uniform steering response and best appearance. Manual height control provided.

BRAKES: Cadillac Power Brakes. Low-pedal type. Effective brake lining area, 210.32 sq. in., 233.72 sq. in. on Series 75 models.

STEERING: Cadillac Power Steering standard equipment with an over-all steering ratio of 19.5 to 1.

FRAME: Cadillac tubular-center X frame permits lower body for improved appearance and greater stability. New U-shaped rear section vastly increases trunk capacity.

TIRES: Low-pressure, 4-ply, tubeless. Size—8.00 x 15 (Series 75: 6-ply, size—8.20 x 15). White sidewall tires*, size 8.20 x 15, optional at extra cost.

DIRECTIONAL SIGNALS: Standard equipment.

BACK-UP LIGHTS: Standard equipment.

SABRE-SPOKE WHEELS*: Heavy-gauge steel and aluminum. Optional at extra cost.

TREAD: Front and rear, 61".

WHEELBASE: 60 Special, 133"; Series 62, 129.5"; Series 75, 149.75".

OVER-ALL LENGTH: 60 Special Sedan, 225.3"; Coupe de Ville, Series 62 Coupe and Convertible, 221.8"; Series 62 Sedan, 216.8"; Sedan de Ville and Series 62 Sedan (extended deck), 225.3"; Eldorado Seville and Biarritz, 223.4"; Series 75, 237.1".

*Standard on Eldorado Seville and Biarritz.

Consult your Cadillac Dealer for specifications of the Eldorado Brougham.

CADILLAC MOTOR CAR DIVISION
GENERAL MOTORS CORPORATION