



HERE BY POPULAR DEMAND

RAMBLER AMERICAN

FOR 1958



9/11
N



1958 RAMBLER AMERICAN
DELUXE CLUB SEDAN

Meet the *ALL-AMERICAN* Smaller Car

- TOP ECONOMY OF ALL AMERICAN-BUILT CARS
- MORE ROOM THAN ANY FOREIGN SMALL CAR
- AT A LOWER PRICE THAN MANY FOREIGN CARS!

It was inevitable that the distinctively new Rambler American should enter the American automotive scene in 1958.

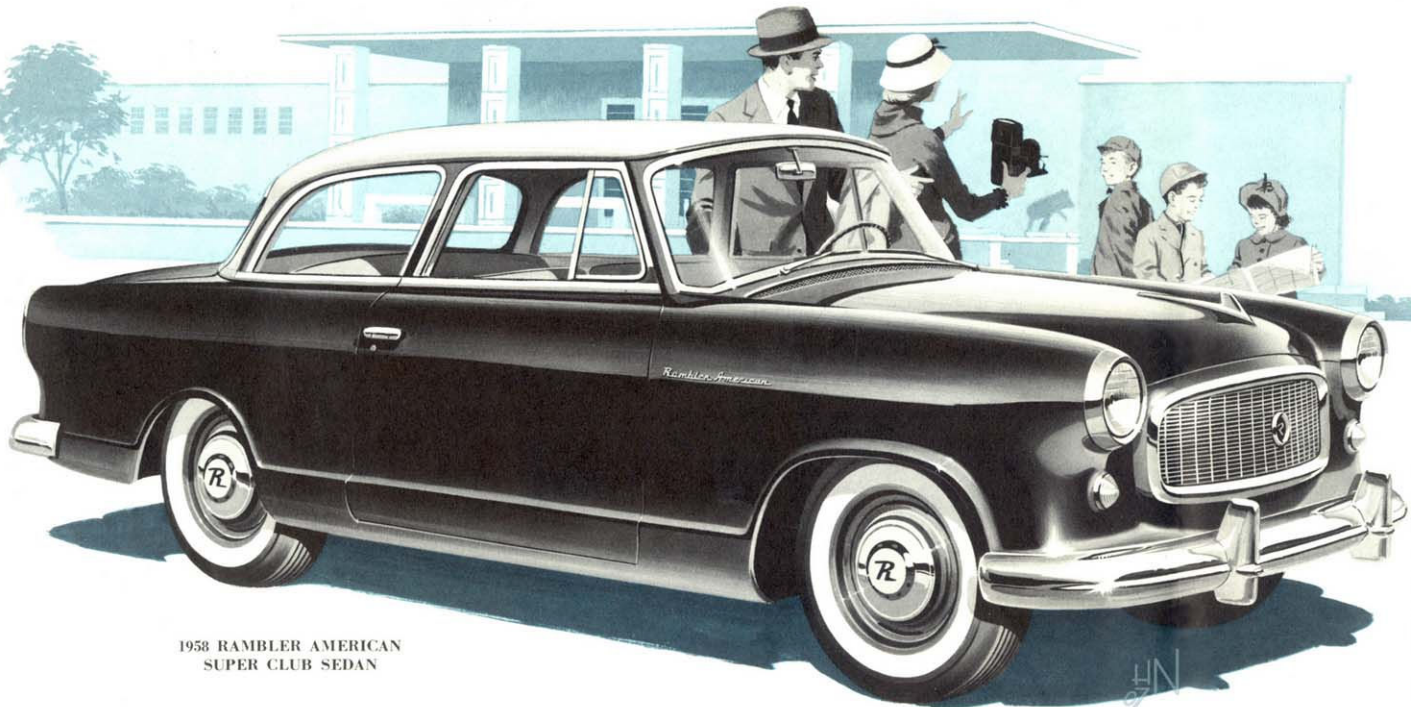
For this is the one car that the modern American demands . . . a car that combats rising operating and maintenance costs by giving more miles per gallon of gasoline with lowest maintenance costs . . . a car that is easier to park, garage and maneuver in traffic.

The chic Rambler American styling imparts an air of smart practicality that sets a new American note. And the car's zestful get-up-and-go, quick-as-a-flash maneuverability and spacious roominess put real fun back into motoring.

Your Rambler American will remain stylishly new for years to come. For it is conceived and built to the principle that a sound design does not need yearly changes or embellishments, with resultant economies to the owner.

Today's big buy in small cars is the Rambler American for 1958. See and drive it now at your Rambler dealer's.





1958 RAMBLER AMERICAN
SUPER CLUB SEDAN

*The RAMBLER AMERICAN . . .
takes the Inflation out of
Motoring*

Your savings start the moment you buy a new Rambler American and continue throughout the life of the car. Initially, you start with a low, low delivered price. No other car built in the United States offers comparable operating economy. None is so simple to service and maintain. And the absence of drastic yearly style changes assures top resale value, year after year.

The Rambler American provides the sensible answer to the rising costs of today's motoring.



Tailored to your taste—The spacious 5-passenger Rambler American interiors are color-keyed to harmonize with the 17 solid and two-tone exterior body colors.





Airliner Reclining Seat adjusts to any of five comfortable positions—enables you to doze the miles away while someone else drives.



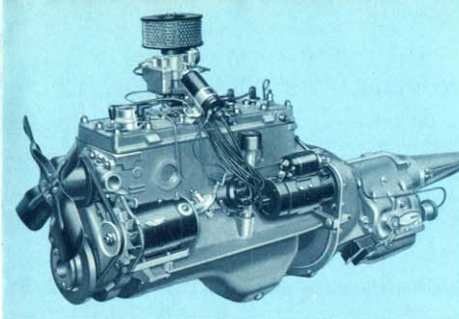
Weather Eye Heating and Ventilating—termed the greatest health and comfort feature ever built into an automobile, is available on all 1958 Rambler American models.



The Rambler American turns with ease where other cars can't make it. It fits any garage without crowding, literally makes driving fun again. U-turns are a cinch!



Full-Dip Rustproofing: Like all Ramblers, the entire body structure is dipped in a full rustproofing bath to prevent rusting from inside out.



World-famous Super Flying Scot Engine! Here is the power plant with World-Renowned Fuel Economy. Its exceptional power-per-pound ratio gives the Rambler American real get-up-and-go while economizing on every drop of gasoline—gives more gas mileage.



Only small car with automatic transmission—the Rambler American is supreme among all small cars in driving convenience and pleasure. Overdrive and Standard Syncro-Mesh transmissions are also available.



Rambler American Deep Coil Suspension absorbs and cushions road shocks before they reach the passenger compartment . . . gives a smooth, level ride under all travel conditions.



Measure the length of the Rambler American with other cars you know. You'll see why you can park easily in the tightest spots, with plenty of room to spare.

Conceived, Engineered and Designed with today's crowded traffic conditions in mind!

Slip behind the trim wheel of the Rambler American and drive through the heaviest traffic you can find. Notice how quickly it answers your every command. You turn well within the radius of any other American-built automobile. You park where others can't. And when you head out onto the open highway, the Rambler American's five-passenger spaciousness assures top comfort as mile after mile slips away with scarcely a flicker of the gas gauge needle.



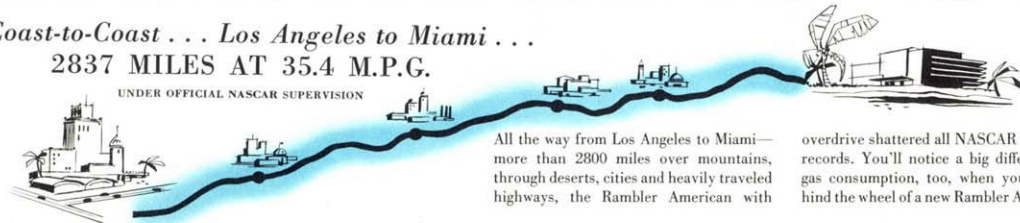
5-Passenger room in a small automobile. The new Rambler American offers spacious interiors—plenty of room for 5 big passengers and their luggage and gear.

Twice as strong—and safer, too! American Motors-pioneered Single Unit Construction surrounds driver and passengers with a safety belt of steel—heavy box girders above, below and all around afford real protection.



Coast-to-Coast . . . Los Angeles to Miami . . . **2837 MILES AT 35.4 M.P.G.**

UNDER OFFICIAL NASCAR SUPERVISION



All the way from Los Angeles to Miami—more than 2800 miles over mountains, through deserts, cities and heavily traveled highways, the Rambler American with

overdrive shattered all NASCAR economy records. You'll notice a big difference in gas consumption, too, when you are behind the wheel of a new Rambler American.



The Rambler American will be giving service when others are needing service!

The more than 2300 American Motors dealers from coast to coast are equipped to render outstanding service on the Rambler American. Each maintains a complete stock of parts. We suggest you let your Rambler dealer help you maintain the outstanding performance that has been built into your Rambler American.

The rare simplicity of Rambler American mechanical construction minimizes service needs. In fact, mechanically-minded owners can perform many service operations themselves, if they desire. Useful service instructions are included in the Owner Manual you receive with your car.

RAMBLER AMERICAN

Specifications

MODELS: Deluxe and Super 2-Door Club Sedan.

MECHANICAL: Wheelbase 100". Overall length 178.25". Width 73". Loaded height 57.32". Front tread 54.62". Rear tread 55". Optional axle ratios available at no extra cost. Standard tire size 5.90 x 15—4 ply rayon tubeless. Optional tire size 6.40 x 15—4 ply rayon or nylon tubeless. Optional white sidewall tires available in both sizes. Coil springs front. Leaf springs with Hotchkiss drive rear. Direct action shock absorbers. Servo-action 9" diameter hydraulic brakes.

ENGINE: L-Head six. Displacement 195.6 cu. in. Bore 3.13". Stroke 4.25". Compression ratio 8.0:1. Solid valve lifters. Horsepower 90. Torque 150. Carter YF single-barrel downdraft carburetor. Fuel filter. Vacuum booster fuel pump. 20 gallon fuel tank. Operates on regular grade gas. Fiberglass hood insulation.

STANDARD EQUIPMENT—Deluxe: Directional signals. Hood ornament. Double-coat baked enamel single colors. Left hand sun visor. Front ash tray. Manual dome light.

Vacuum booster fuel pump. Fuel filter. Dry type air cleaner. 12 volt electrical system. Vinyl-fabric or all-vinyl upholstery.

Super: Above Deluxe items plus following. Front* and rear armrests. Right hand sun visor*. Cigarette lighter*. Foam cushion front. Map and glove box light. Trunk mat. Automatic dome light. Stainless steel windshield and belt mouldings. Adjustable rear window.

* Available on Deluxe as factory-installed 3-item package or singly as dealer installation. Front foam cushion also factory-installed option on Deluxe.

OPTIONAL EQUIPMENT, ALL MODELS: Flash-O-Matic. Overdrive. Weather Eye heater. Manual radio. Undercoating. Airliner reclining seats. Two-tone colors. Rear foam cushion. Outside rear mirror (left). Oil filter. Oil bath air cleaner. Electric clock. Custom steering wheel. Wheel discs. Heavy duty rear springs and shocks. Solex glass. Windshield washers. Optional tires as listed.

AMERICAN MOTORS, WHOSE POLICY IS ONE OF CONTINUOUS IMPROVEMENT, RESERVES THE RIGHT, HOWEVER, TO DISCONTINUE OR CHANGE SPECIFICATIONS, MODELS OR PRICES AT ANY TIME WITHOUT NOTICE AND WITHOUT INCURRING OBLIGATION.

