



# Jeep®

... COMPLETE LINE  
OF THE  
WORLD'S MOST  
VERSATILE  
VEHICLES

PALOS VERDES JEEP  
3680 PACIFIC COAST HWY.  
TORRANCE, CALIFORNIA

WE WILL DEMONSTRATE ANY  
NEW OR USED CAR OR TRUCK.  
COMPLETE FINANCING IN THE  
FIELD, ON YOUR LUNCH HOUR  
OR AT YOUR CONVENIENCE.  
PLEASE CALL ME FOR AN  
APPOINTMENT.



'Jeep' vehicles are known throughout the world for ruggedness, versatility, economy and *built-in* quality . . . just as the KAISER Jeep CORPORATION is recognized as the world's largest manufacturer of 4-wheel drive vehicles.

No 'Jeep' 4-wheel drive vehicle was ever built on a modified 2-wheel drive design. From drafting board to loading dock, 'Jeep' 4-wheel drive vehicles are 4-wheel drive *all the way!* That's why we say, "High road, low road, *no* road—you GO in a 'Jeep' vehicle."

Whether your need is rugged, reliable 4-wheel drive . . . or smooth-handling, easy-riding 2-wheel drive . . . somewhere in the broad 'Jeep' vehicle line there's a 'Jeep' vehicle built for you.



# 'Jeep' Wagoneer



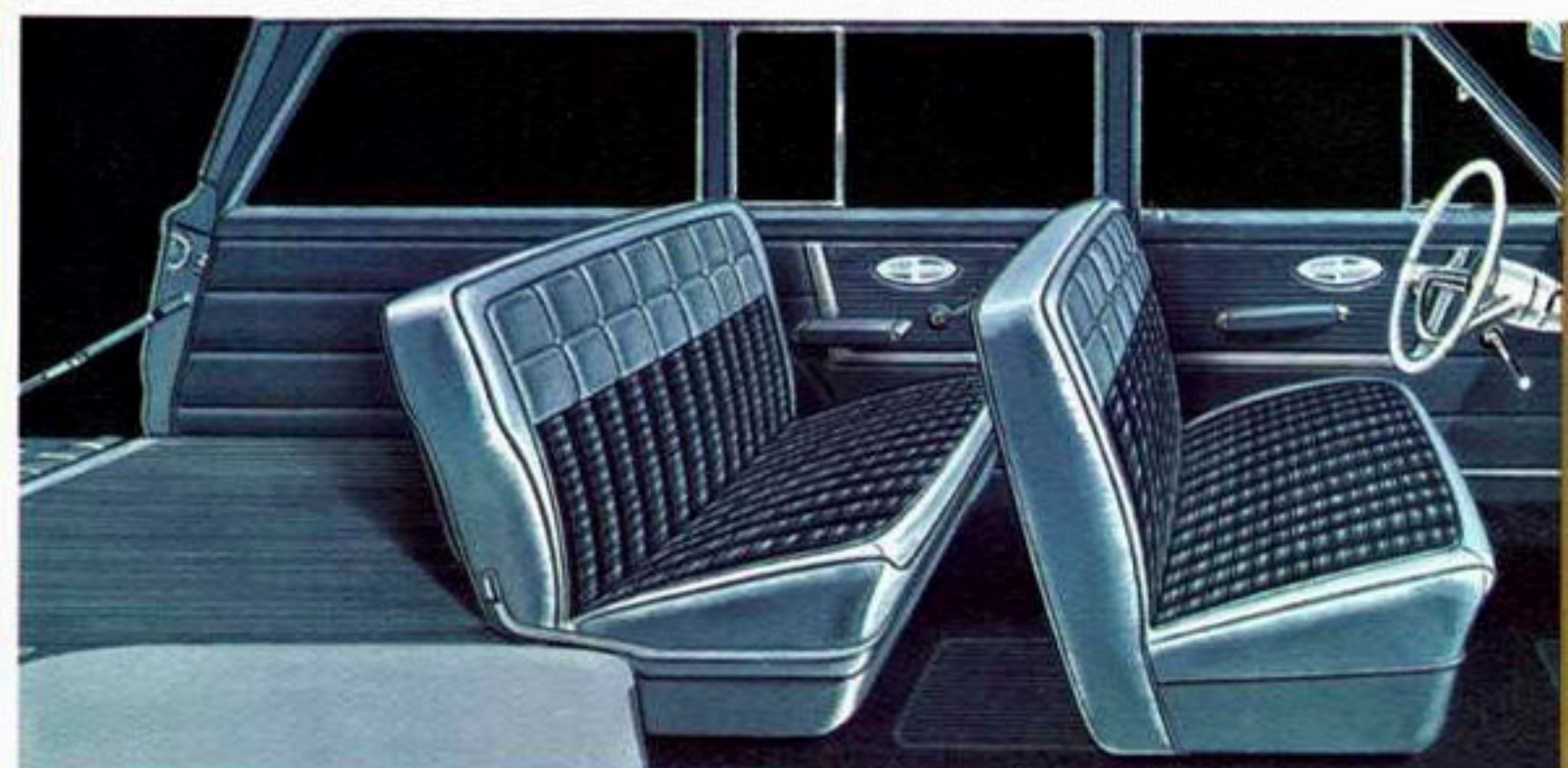
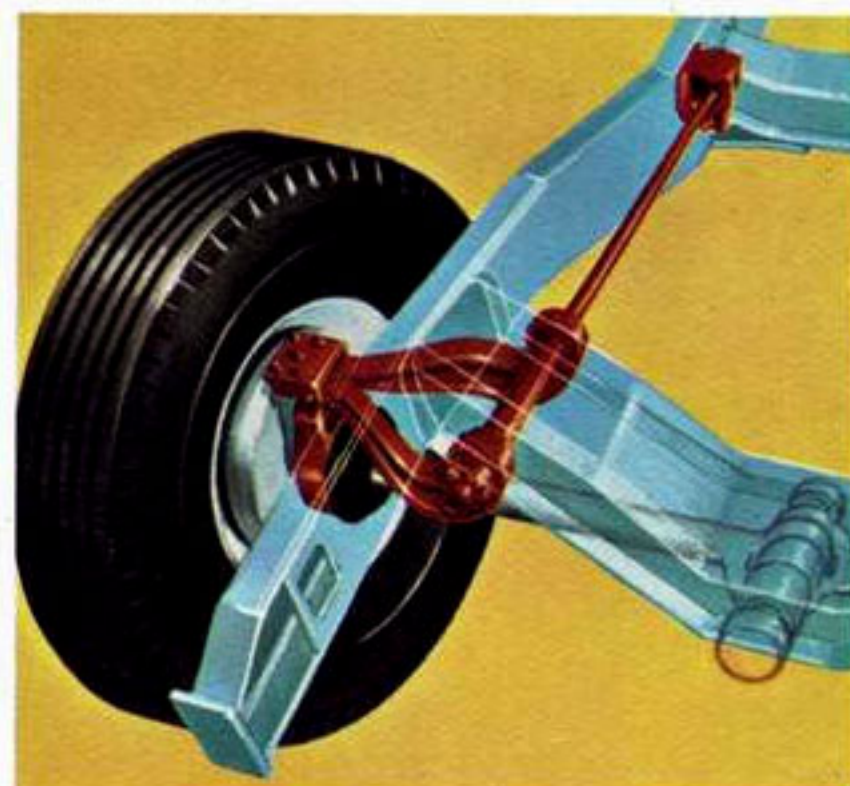
'Jeep' Wagoneer 4-Door Custom Station Wagon in President Red. Available in 2 or 4-wheel drive.

Whistle-clean—from underbody to instrument panel—that's the 'Jeep' Wagoneer. Here's classical design with traditional ruggedness, comfort and roadability . . . in your choice of 2 or 4-wheel drive, 2-door or 4-door models. You can go 30,000 miles between lube jobs . . . 6,000 miles between oil changes. And beneath that handsome exterior there's a frame of steel—protecting passengers, cargo, axles, drive shafts, and suspension. Automatic transmission available—a 'Jeep' vehicle "first" with 4-wheel drive.

**SELECTOR DRIVE LIGHTS:** Never any confusion about drive selection. Easy-to-read lights let you know when your Wagoneer is in 4-wheel drive. Lights are located directly above the single lever which actuates the Wagoneer's new silent transfer case. Four lights optional, two lights (4WD and neutral) standard.

**INDEPENDENT FRONT SUSPENSION** for easier, smoother riding is standard on the 2WD—optional on the 4WD Wagoneer, another 'Jeep' vehicle "first." In fact, the 4WD Wagoneer is the only 4-wheel drive station wagon that offers it!

**INTERIOR** High-style, rich interiors are yours in the Custom 'Jeep' Wagoneer. Wide seats, uncluttered floor (the easy-to-reach 4-wheel drive selector lever is the only floor-mounted control), abundance of head and leg room, rich-looking carpet and seat fabrics with longer-wear qualities for continued good looks. All windows, except the rear quarter, are roll-down type, even the tailgate window. And electric tailgate window actuation with front and rear controls is available.



# 'Jeep' Gladiator



## J-300 THRIFTSIDE

Shown above in Parkway Green.

You're sure to find a pick-up truck to match your needs in the 2 and 4-wheel drive 'Jeep' Gladiator Series . . . available with the stylish Townside or economical Thriftside cargo bodies. These new Gladiators are *all truck*—yet so easy-handling even the ladies anticipate their "turn at the wheel". In the 4-wheel drive model, there's a single 4WD shift lever, silent transfer case, dashboard 4WD indicator lights and standard compass. Automatic transmission and independent front suspension are available with both 2 and 4-wheel drive. Choose from two series, the 120 in. wheelbase J-200 with 7 ft. box or the 126 in. wheelbase J-300 with 8 ft. box . . . available with gross vehicle weights that range from 4,000 to 6,600 lbs. in the J-200 and from 5,000 to 7,600 lbs. in the J-300 series.

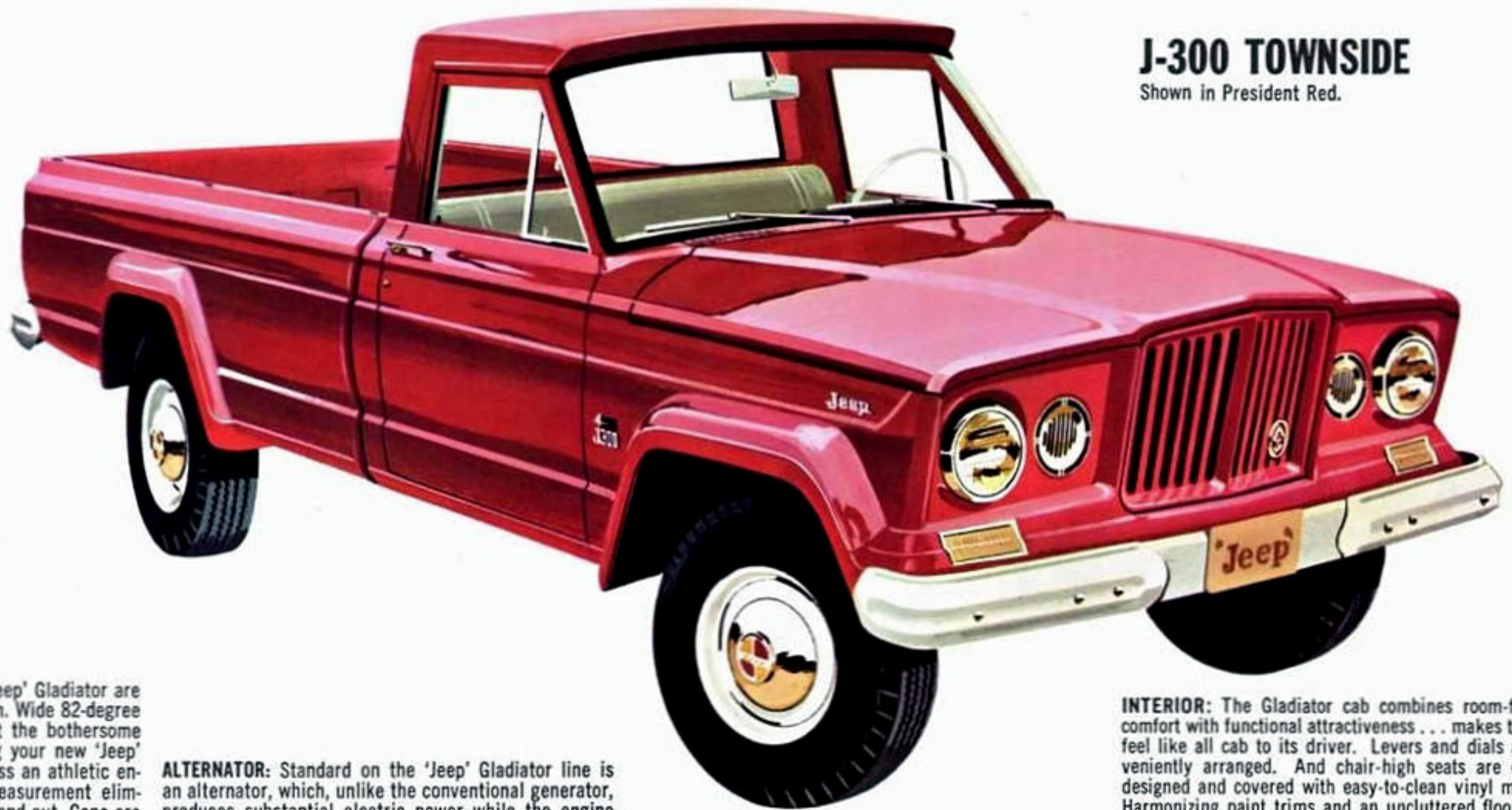
### LOADSPACE THRIFTSIDE

|  | J-200      | J-300  |
|--|------------|--------|
| Length at floor.....                   | 84.34..... | 96.34  |
| Length with tailgate down.....         | 99.41..... | 111.41 |
| Width at floor, maximum.....           | 48.50..... | 48.50  |
| Tailgate opening .....                 | 48.50..... | 48.50  |
| Width between wheelhouses.....         | 48.50..... | 48.50  |
| Tailgate height from top of floor..... | 13.69..... | 13.69  |
| Ground to floor.....                   | 27.69..... | 27.69  |

### LOADSPACE TOWNSIDE

|  | J-200       | J-300  |
|--|-------------|--------|
| Length at floor.....                   | 84.34.....  | 96.34  |
| Length with tailgate down.....         | 106.03..... | 118.03 |
| Width at floor, maximum.....           | 71.00.....  | 71.00  |
| Tailgate opening .....                 | 55.64.....  | 55.64  |
| Width between wheelhouses.....         | 50.10.....  | 50.10  |
| Tailgate height from top of floor..... | 20.17.....  | 20.17  |
| Ground to floor.....                   | 27.69.....  | 27.69  |

# PICK-UP TRUCKS



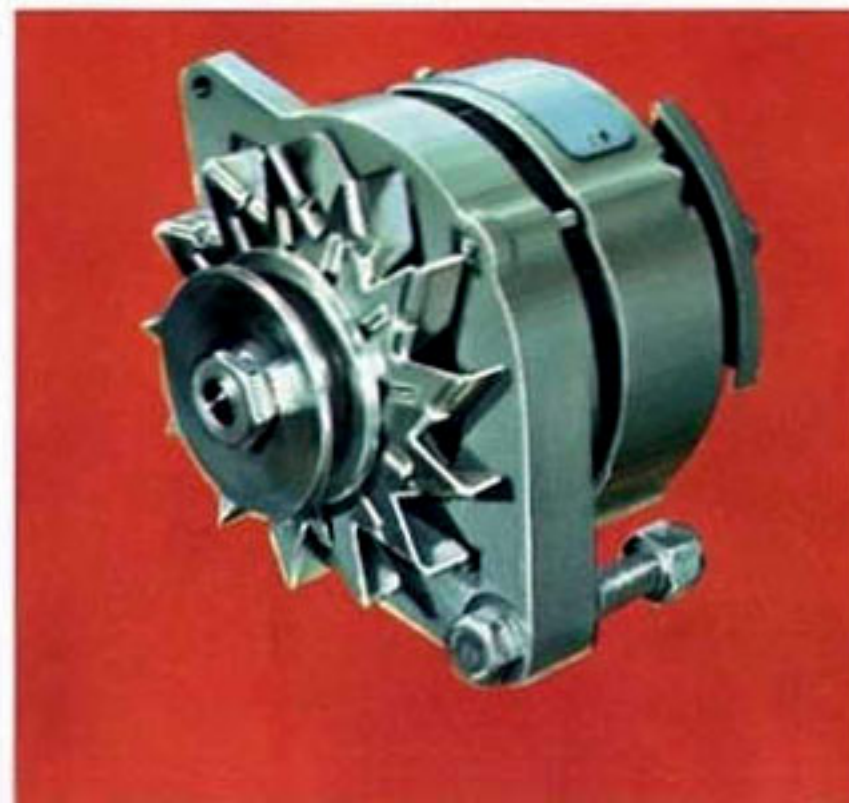
## J-300 TOWNSIDE

Shown in President Red.

**DOOR OPENINGS:** The doors of the 'Jeep' Gladiator are designed for the people who use them. Wide 82-degree door swing plus door frames without the bothersome "dog leg" make entering and leaving your new 'Jeep' Pick-up Truck more a pleasure and less an athletic endeavor. Its short ground to floor measurement eliminates "step-ladder" climb getting in and out. Gone are the climbing, squeezing, sliding, knee-ducking gymnastics.

**ALTERNATOR:** Standard on the 'Jeep' Gladiator line is an alternator, which, unlike the conventional generator, produces substantial electric power while the engine is idling. Gives your battery longer life . . . gives you faster cold-weather starting.

**INTERIOR:** The Gladiator cab combines room-for-three comfort with functional attractiveness . . . makes the truck feel like all cab to its driver. Levers and dials are conveniently arranged. And chair-high seats are comfort-designed and covered with easy-to-clean vinyl materials. Harmonizing paint trims and an uncluttered floor add to the distinctiveness of the Gladiator cab. Custom Cab with foam seats and special trim also available.



# 'Jeep' Gladiator

## STAKE MODELS



### J-300 DUAL REAR WHEEL STAKE MODEL

Shown above in President Red.



### J-200 SINGLE REAR WHEEL STAKE MODEL

Shown above in Sierra Blue.

All truck and plenty of it! That's what you get with either of the 2 or 4-wheel drive 'Jeep' Gladiator Stake Models. With single rear wheels your new 'Jeep' Stake Model is the truck for bulky cumbersome loads of almost any kind. The dual rear wheel model gives you even more loadspace and extra gripping traction for greater uphill and downhill safety and confidence.

For agriculture, construction, public service and literally hundreds of other uses, the 'Jeep' Gladiator Stake Models are matchless performers. They're good-looking too! With the power and advanced features of all 'Jeep' Gladiators, these new Stake Models are built to take the toughest jobs in stride. For the heaviest assignments, the Dual Rear Wheel Models are available in 8,600 lb. G.V.W.'s

**CARGO AREA:** It's hard to beat the loadspace and pound for pound capacity you get in any of the new 'Jeep' Gladiator Trucks. And they've all got the mighty TORNADO engine to power big loads anywhere. Take a look at the cargo area you have in the all new 'Jeep' Stake Models.



### STAKE MODEL BED DIMENSIONS

|                               | J-200  |       | J-300  |        |
|-------------------------------|--------|-------|--------|--------|
|                               | SINGLE | DUAL  | SINGLE | DUAL   |
| Floor length, outside edge    | 90.07  | 90.13 | 101.32 | 101.38 |
| Floor width, outside edge     | 76.82  | 91.98 | 76.82  | 91.98  |
| Side height, side to rail top | 30.38  | 30.38 | 30.38  | 30.38  |
| Ground to floor               | 39.39  | 42.33 | 39.39  | 42.33  |

# 'Jeep'

## PANEL DELIVERY

For roughhouse hauling or routine delivery, you can't beat the all new 2 and 4-wheel drive 'Jeep' Panel Delivery Truck . . . America's brightest, newest panel delivery. Here's a truck with smart new styling and design from the ground up. It has a lower overall height, yet its driver area is roomier, loadspace greater, and ground clearance better than most competitive vehicles.

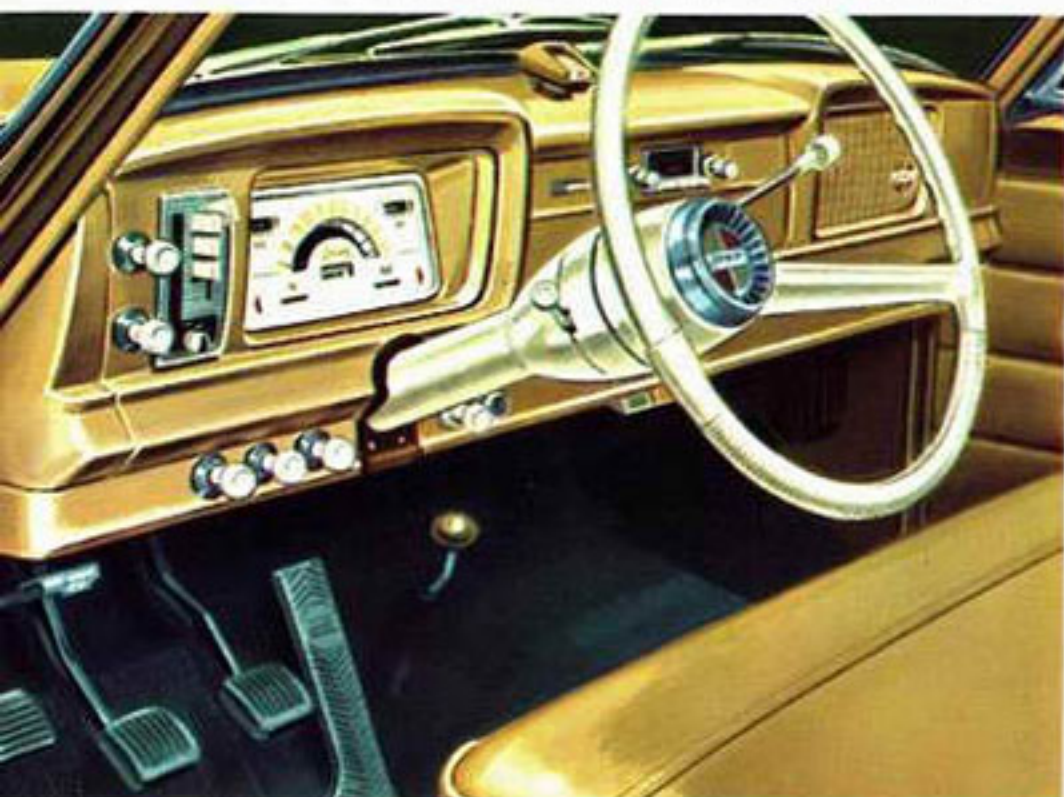
The 4-wheel drive model of the new 'Jeep' Panel Delivery has a new silent transfer case with single lever operation, and optional independent front suspension and automatic transmission—exclusive features found only on new 'Jeep' vehicles.

The mighty TORNADO engine provides big power with gas-saving economy. With 30,000-mile lubrication, 6,000 mile oil changes, low initial cost, and minimum operational expense, your new 'Jeep' Panel Delivery is a smart business investment.

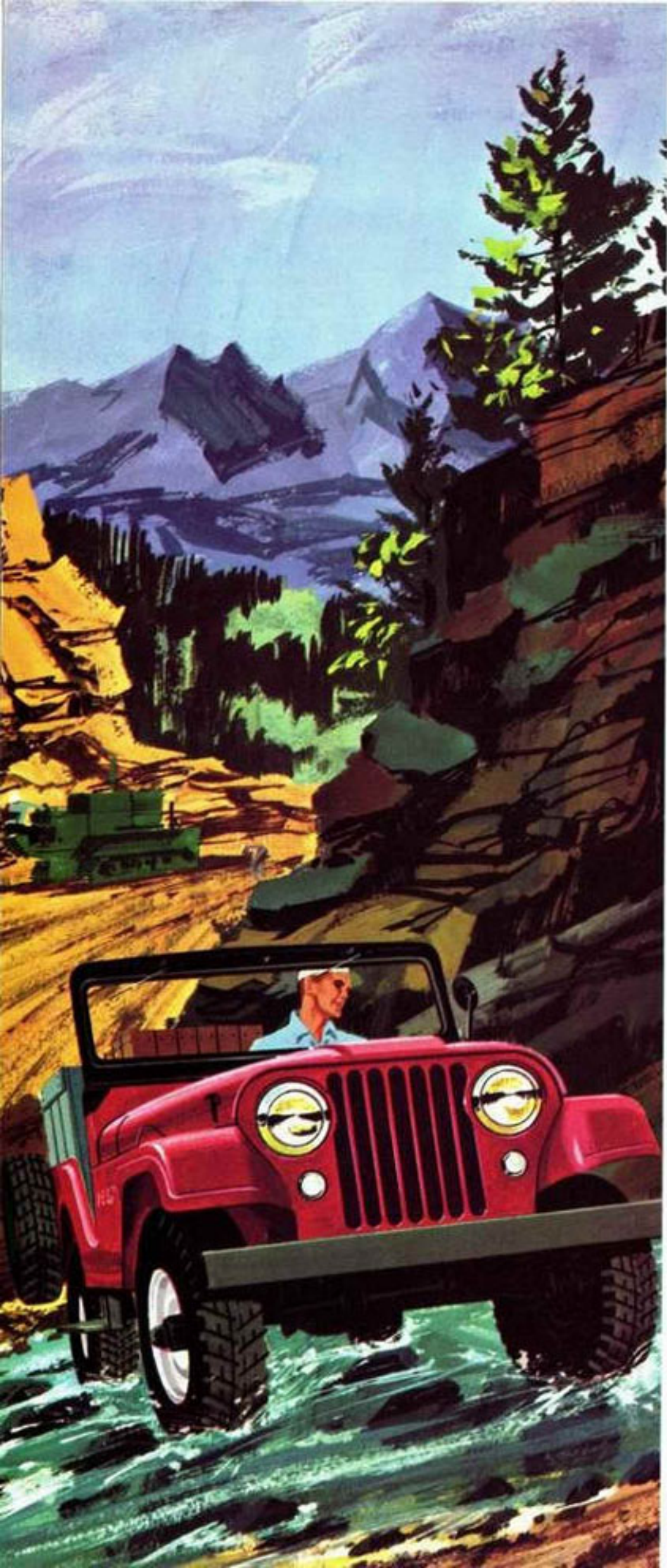
**INTERIOR:** Easy-to-read instrument panel, standard compass (4WD model), and uncluttered floor space make the Panel Delivery safer and more convenient. Straight door posts eliminate "dog-leg." Wide 82-degree door swing takes the work out of entering and leaving.



Shown in Parade Blue



Loading the all new 'Jeep' Panel Delivery is no chore at all. Its big double rear doors swing all the way open to a high and wide 39½ in. by 55 in., the full inside height and width of the vehicle. Bed height is a short 23½ in. from the ground. There's a full 107 cu. ft. of usable cargo space—room to accommodate bulky loads of up to 1200 lbs. Yet unlike many competitors, when fully loaded, the 'Jeep' Panel Delivery still handles with ease, rides with unbelievable smoothness.



# Jeep<sup>®</sup> UNIVERSALS



UNIVERSAL CJ-5



UNIVERSAL CJ-3B



UNIVERSAL CJ-6



# Jeep®

## DISPATCHER • SURREY GALA • FLEETVAN

### 'JEEP' UNIVERSAL, MODEL CJ-5

Why be stopped by mud, muck, snow or sand? Or, rocky, stumpy ground, steep grades or shallow streams? Owning a CJ-5 puts an end to these annoyances. Four-wheel drive and a high 8-in. road clearance team up to ease you over the toughest terrain. What's more, you get a big 1,476 lbs. of payload—all on only 81 in. of wheelbase—and a cargo bed that measures 36 in. x 39¾ in. Power take-off and five top options, including convertible, available.

### 'JEEP' UNIVERSAL, MODEL CJ-3B

Hardly anyone, anywhere doesn't recognize the 'Jeep' Universal, CJ-3B. On a wheelbase of only 80 in. the CJ-3B carries 1,257 lbs. of payload—just about anywhere you'll ever want to go. Available in five top options, including a black or white convertible top. With tailgate up the CJ-3B has a cargo bed space of 36 in. x 38 in. Turn radius is 17 ft., 6 in. Great for hunters, fishermen, campers. Three-point power take-off available.

### 'JEEP' UNIVERSAL, MODEL CJ-6

For extra-tough jobs you need the king-sized Universal, the 'Jeep' CJ-6. Big, rugged, roomy, the CJ-6 hauls a full 1,564 lbs. of payload—eight man-sized passengers, with optional side seats. Cargo bed is 74½ in. long with the tailgate extended. It has a big 2,500-lb. capacity rear axle, and directing shock absorbers that take the bumps out of the roughest ride. And, with the 'Jeep' Universal CJ-6, you get **nine** tire options. All-weather metal and fabric cabs and full Convertible tops available. Power take-off, of course.



DISPATCHER DJ-3A

### 'JEEP' DISPATCHER, DJ-3A

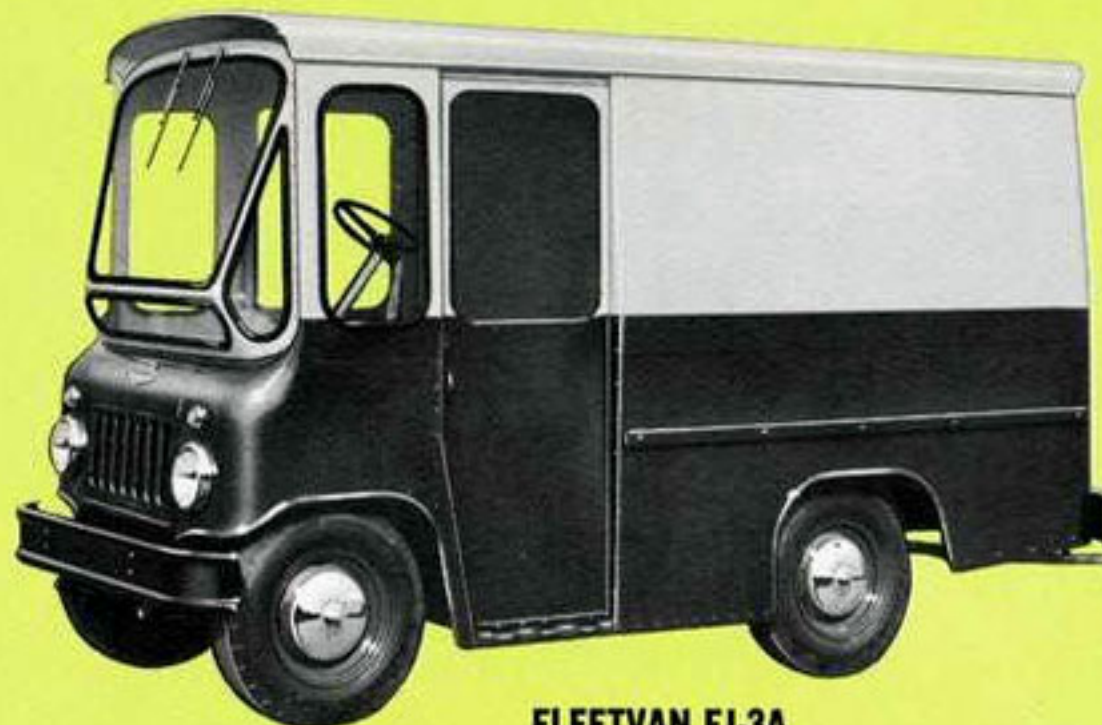
Lightweight, highly maneuverable—turns in a radius of 17½ ft.—the Dispatcher has a cargo capacity of 40 cu. ft., an ample gate opening 35½ in. high by 36 in. wide and an easy-to-load platform height of just 23½ inches. Open body or optional Soft Top, Half Top and Hardtop models with ten standard body colors to choose from. All models have optional vented, folding windshields.

### 'JEEP' SURREY GALA, DJ-3A

Colorful choice of smart shops, small businesses, resort motels and hotels throughout the world, the Surrey Gala with the fringe on top is economical to buy and operate. Washable curtains, tops and seat coverings made of sturdy weather-resistant fabrics. Three two-tone paint options.



SURREY GALA DJ-3A



FLEETVAN FJ-3A

### 'JEEP' FLEETVAN, MODEL FJ-3A

Specifically designed for light-duty, multi-stop operation, the 'Jeep' Fleetvan is efficient, rugged, highly maneuverable and economical. Carries 1,000 lbs. of payload on 81 inches of wheelbase and supports a cargo capacity of 170 cu. ft. Only 154 in. long and 64.7 in. wide, the Fleetvan turns in a radius of 17 ft., important in traffic and the loading area. The driver of the Fleetvan can see an object only three feet high 12 in. from the front bumper. Side door height is 70 in. for easy walk-through.

# Jeep<sup>®</sup>

## FORWARD CONTROL TRUCKS

### FC-150 TRUCK

If you want to be out front, you've got to be "up front," which is what Forward Control design was created for. The FC-150 is a short-wheelbase (81 in.), high-payload (1,727 lbs.) efficiency-engineered vehicle that puts the driver on top of any road situation. Easy handling—turns in an 18½ ft. radius—easy loading—bed height is 24½ in.—the FC-150 gives you the most cargo capacity on the least wheelbase of any pick-up in its weight class.

### FC-170 TRUCK

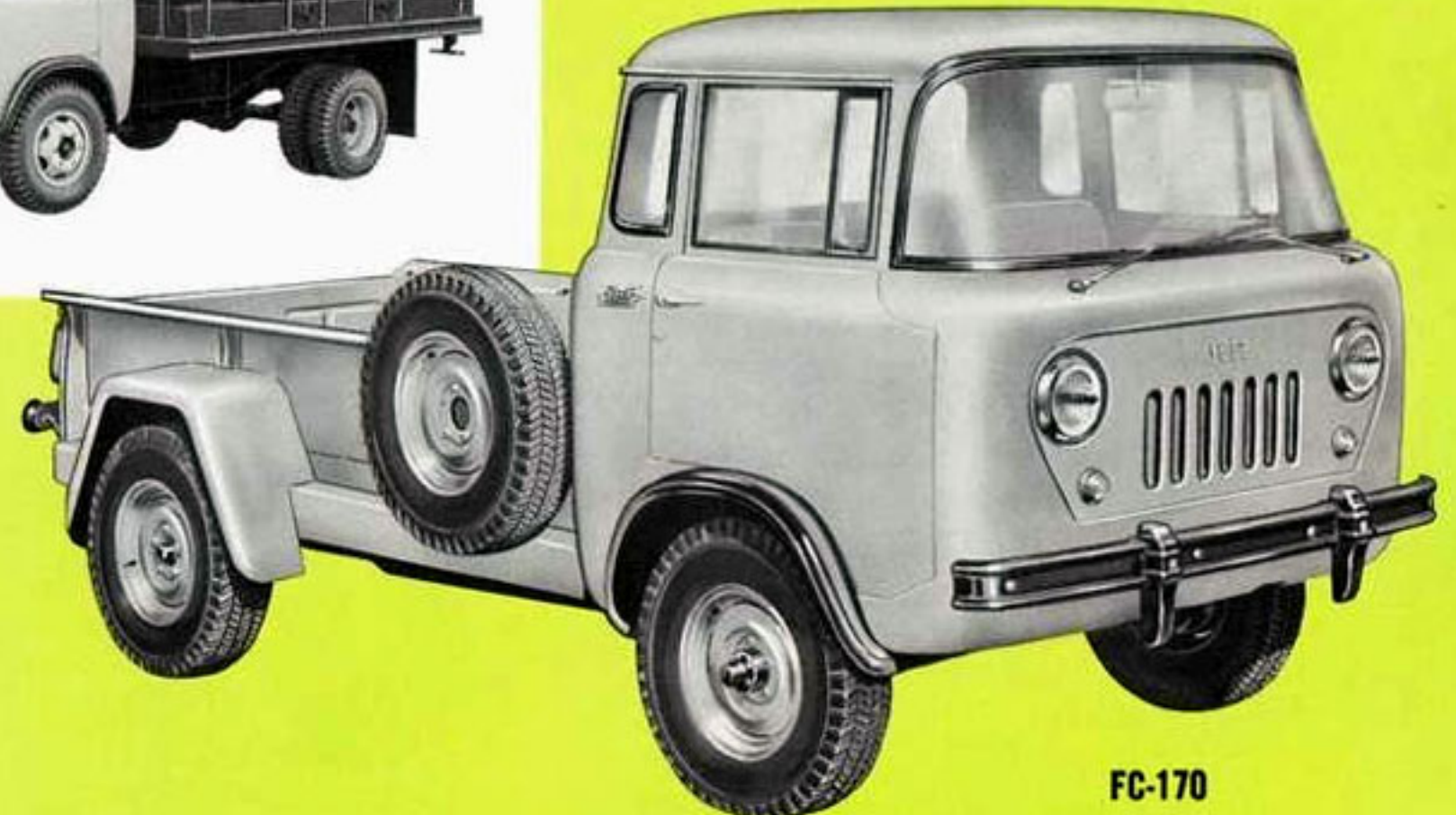
More muscle, more power, more payload—and still Forward Control, the FC-170 packs a big 3,510 lbs. payload in its 45 cu. ft. cargo box. On a wheelbase of 103½ in., the FC-170 turns in a 21 ft., 10 in. radius, and the driver can see the road ahead six ft. from the front bumper. Available as a pick-up truck, stake with single or dual rear wheels, or cab and chassis only, the FC-170 easily accommodates big loads, with balanced weight distribution.

FC-150 STAKE MODEL



FC-150

FC-170 DUAL WHEEL STAKE MODEL



FC-170

# Jeep®

## ENGINE

### FIVE MILEAGE-PROVED ENGINES TO MEET ALL 'JEEP' VEHICLE REQUIREMENTS

#### 'JEEP' "HURRICANE" 4-CYLINDER F-HEAD ENGINE

The 'Jeep' Hurricane engine gives you the kind of economy only a 4-cylinder engine can. With 2-in. intake valves in the head and exhaust valves in the block, the "Hurricane" has a bore and stroke of 3.125 in. x 4.375 in., develops 75 H.P. @ 4,000 R.P.M. and 114 lbs. ft. torque @ 2,000 R.P.M. with a compression ratio of 7.4:1 (6.9:1 optional) and displacement of 134.2 cu. in. The engine has exhaust valve inserts, positive exhaust valve rotation, cast-in-head intake manifold and aluminum alloy pistons for long trouble-free operation. Available in the CJ-3B, CJ-5, CJ-6, FC-150 and Fleetvan models.

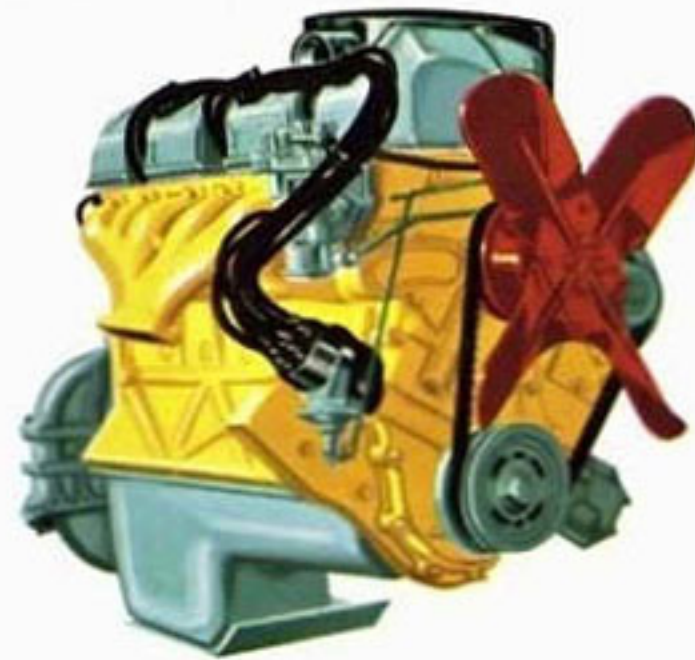
#### 'JEEP' HIGH TORQUE "SUPER HURRICANE" 6-CYLINDER L-HEAD ENGINE

Here is high-powered performance at low operating cost. High Torque "Super Hurricane" engine features tough alloy block, chromium rings, Stellite valves with positive exhaust rotation, aluminum alloy pistons, heavy-duty bearings, floating oil intake. Easily accessible between seats in cab. Heavy glass fiber insulation cuts off heat and noise. Available in the FC-170 Truck.

105 H.P. @ 3,600 R.P.M., 190 lbs. ft. torque @ 1,400 R.P.M., 226.2 cu. in. displacement, 6-cyl. L-Head design.

#### 'JEEP' "LIGHTNING" 4-CYLINDER L-HEAD ENGINE

The efficiency-engineered L-Head engine is a compact, lightweight yet rugged power plant that gets extra mileage out of low-octane gasoline. Horsepower is 60 @ 4,000 R.P.M., torque, 105 lbs. ft. @ 2,000 R.P.M. with a compression ratio of 7.00:1. Bore and stroke are 3.125 in. x 4.375 in. and displacement is 134.2 cu. in. Exhaust valve inserts and aluminum alloy pistons contribute to the longevity of this remarkable engine, which needs little maintenance attention and will operate economically at all speeds with exceptionally low fuel consumption. The "Lightning" 4-cylinder L-Head powers the world-famous 'Jeep' Dispatcher.



#### 'JEEP' TORNADO-OHC 6-CYLINDER ENGINE

"Revolutionary" is the word for America's most advanced new engine—the only overhead cam automotive engine commercially manufactured in America today, and **exclusively** for 'Jeep' vehicles! Designed for economical heavy-duty performance at maximum efficiency, the OHC develops 140 H.P. @ 4,000 R.P.M., 210 lbs. ft. torque @ 1,750 R.P.M.—on regular fuel. Displacement is 230 cu. in. with an 8.5:1 compression ratio, bore and stroke, 3.34 in. x 4.38 in. Special features include spheroidal combustion chambers, extra-large valves, Tufftrided crankshaft, heavy-duty bearings, Autothermic pistons and positive crankcase ventilation. The TORNADO-OHC engine is available in the 'Jeep' Wagoneer, the 'Jeep' Panel Delivery, and in the 'Jeep' Gladiator Pick-up Trucks. Lowest specific fuel consumption of all production gasoline engines.

#### PERKINS "FOUR 192" DIESEL 4-CYLINDER ENGINE

Factory-installed with no major body or chassis operations, the Perkins "Four 192" Diesel Engine presents several distinct advantages: lower fuel cost than gasoline (in most places); less fuel wastage; high torque at low engine speed; long and low-cost operation; no electrical ignition; and, safety in areas where gasoline engines could cause fire. The Perkins Diesel has a bore and stroke of 3.5 in. x 5 in., a compression ratio of 16.5:1 and a displacement of 192.4 cu. in. Develops 62 H.P. @ 3,000 R.P.M. and 143 lbs. ft. torque @ 1,350 R.P.M. Can be installed in the CJ-5 and CJ-6 'Jeep' Universals.

### APPROVED SPECIAL EQUIPMENT\*

**SELECTIVE DRIVE HUBS.** Warn or Cutlas hubs improve tire and gas mileage without speed or power selection interference in 2 or 4-wheel drive.

**ANGLE DOZERS.** Meyer angle dozers are adjustable and reversible for a wide variety of earth, gravel, slag, coal and cinder operations.

**WHEEL COVERS.** Mirror-finish stainless steel Cutlas wheel covers dress-up 'Jeep' vehicles. Install easily. For 15 or 16 inch wheels.

**ROPER DIGGERS.** For 'Jeep' Universals with special lift and rear power take-off. Farm, commercial, nursery-orchard, construction models.

**CABS.** Either steel or canvas cabs are available in half or full cab models for all 'Jeep' Universals. No body alterations for installation required.

**FLEX-N-GATE "CAMP-N-CARGO"** Aluminum Box converts Pick-up Truck to mobile camping or utility unit. Lightweight and weather-proof.

**TAILGATE LOADER.** 600 or 1000 lb. rated model available. Speeds delivery, loading, and unloading. Reduces costs.

**CONVERTIBLE TOP.** Quickly convertible all-season top fits 'Jeep' Universals without alterations. Dielectric sealed seams, ventilated front windows.

**WINCHES.** Ramsey or Koenig, front, rear or bed-mounted winches are especially constructed for use with 'Jeep' 4-wheel drive vehicles.

**WRECKER.** Canfield Wrecker for quick installation on 'Jeep' Gladiator or Forward Control Pick-Up Trucks and Holmes Wrecker for permanent assembly on the 'Jeep' J-300 Dual Rear Wheel cab and chassis. Available on 4WD trucks only.

**GO-FOR TRENCHER.** Has variety of bits and booms. Digs trenches 5 ft. deep, 15 in. wide and at speeds over 600 ft. per hr. Top performance.

**Stratton HYDRO-IMPLEMENT LIFT.** Developed exclusively for 'Jeep' vehicles. Provides system for operating any of the numerous standard 3-point hitch implements.

**"Sweepster" ROTARY BROOMS.** Available for 'Jeep' 4WD Vehicles, in use by cities, schools, contractors, ice rinks—many others. Special sizes for snow removal and street cleaning.

**SERVICE BODY.** The Stahl Service Body protects tools in weather-proof, locking compartments. The heavy steel construction assures years of trouble-free service.

**MEYER SNOW PLOWS** in either reversible or "V" blade type, are available in 72 in., 84 in., 90 in., and 96. in. widths. With electric hydraulic lift can be installed on all 'Jeep' 4WD vehicles.

**'JEEP'-A-TRENCH.** Has variety of bits and booms. Digs trenches 6 ft. deep, 14 in. wide and at speeds up to 640 ft. per hr.

\*Partial List Only. See your 'Jeep' Dealer for additional items of approved special equipment.

# SPECIFICATIONS

(Specifications subject to change without notice)

|                          | CJ-3B                            | Universals<br>CJ-5 | CJ-6      | Surrey Gals<br>DJ-3A | Dispatcher<br>DJ-3A | J-100 Wagoneer<br>4-dr. Station Wagon<br>2WD | J-100 Panel Delivery<br>2WD | J-100 Panel Delivery<br>4WD | Gladiator Townside<br>J-200    | Fleetvan<br>FJ-3A | Forward Control<br>FC-150 | Forward Control<br>FC-170 |
|--------------------------|----------------------------------|--------------------|-----------|----------------------|---------------------|--|-----------------------------|-----------------------------|--------------------------------|-------------------|---------------------------|---------------------------|
| <b>WHEELBASE</b>         | 80"                              | 81"                | 101"      | 80"                  | 80"                 | 110"   | 110"                        | 110"                        | 120"                           | 81"               | 81"                       | 103.6"                    |
| <b>SHIPPING WEIGHT</b>   | 2132 lbs.                        | 2163 lbs.          | 2225 lbs. | 1819 lbs.            | 1709 lbs.           | 3480 lbs.                                    | 3253 lbs.                   | 3396 lbs.                   | 3344 lbs.-2WD<br>3563 lbs.-4WD | 2866 lbs.         | 3152 lbs.                 | 3331 lbs.                 |
| <b>G.V.W.</b>            | 3500 lbs.                        | 3750 lbs.          | 3900 lbs. | 2600 lbs.            | 2600 lbs.           | 4200 lbs.                                    | 4200 lbs.                   | 4500 lbs.                   | 5000 lbs.*                     | 4000 lbs.         | 5000 lbs.                 | 7000 lbs.                 |
| <b>CURB WEIGHT</b>       | 2243 lbs.                        | 2274 lbs.          | 2336 lbs. | 1925 lbs.            | 1815 lbs.           | 3615 lbs.                                    | 3388 lbs.                   | 3531 lbs.                   | 3479 lbs.-2WD<br>3698 lbs.-4WD | 2991 lbs.         | 3273 lbs.                 | 3498 lbs.                 |
| <b>LENGTH</b>            | 129.9"                           | 135.5"             | 155.5"    | 136"                 | 130"                | 183.66"                                      | 183.66"                     | 183.66"                     | 193.64"                        | 154"              | 147.3"                    | 181.4"                    |
| <b>WIDTH</b>             | 68.8"                            | 71.7"              | 71.7"     | 66.5"                | 57.1"               | 75.60"                                       | 75.60"                      | 75.60"                      | 78.90"                         | 64.7"             | 74.4"                     | 74.4"                     |
| <b>HEIGHT—CURB</b>       | 67.7"                            | 69.5"              | 68.2"     | 71.0"                | 62.7"               | 64.0"  | 64.00"                      | 64.20"                      | 71.00"                         | 90.1"             | 77.5"                     | 79.0"                     |
| <b>STANDARD TIRES</b>    | 6.00-16                          | 6.00-16            | 6.00-16   | 6.50-13              | 6.50-13             | 6.70-15                                      | 6.70-15                     | 7.10-15                     | 7.60-15*                       | 6.70-15           | 7.00-15                   | 7.00-16                   |
| <b>ELECTRICAL SYSTEM</b> | 12 VOLT STANDARD—6 VOLT OPTIONAL |                    |           |                      |                     |  |                             |                             |                                |                   |                           |                           |
| <b>ROAD CLEARANCE</b>    | 8.0"                             | 8.0"               | 8.0"      | 7.0"                 | 7.0"                | 7.75"  | 7.75"                       | 7.75"                       | 8.5"                           | 7.03"             | 8.5"                      | 8.9"                      |
| <b>TURNING DIAMETER</b>  | 34' 2"                           | 35' 1"             | 42' 4"    | 34' 9.5"             | 34' 9.5"            | 41'  | 35' 0"                      | 44' 6"                      | 41' 10"-2WD<br>45' 6"-4WD      | 32' 1"            | 36' 8"                    | 43' 9"                    |
| <b>REAR AXLE</b>         |                                  |                    |           |                      |                     |  |                             |                             |                                |                   |                           |                           |
| Capacity                 | 2500 lbs.                        | 2500 lbs.          | 2500 lbs. | 2000 lbs.            | 2000 lbs.           | 3000 lbs.                                    | 3000 lbs.                   | 3000 lbs.                   | 3500 lbs.                      | 2000 lbs.         | 3500 lbs.                 | 4500 lbs.                 |
| Ratio                    | 4.27:1                           | 4.27:1             | 4.27:1    | 4.10:1               | 4.10:1              | 4.09:1                                       | 4.09:1                      | 4.09:1                      | 4.09:1                         | 4.56:1            | 5.38:1                    | 4.88:1                    |
| <b>FRONT AXLE</b>        |                                  |                    |           |                      |                     |  |                             |                             |                                |                   |                           |                           |
| Capacity                 | 2000 lbs.                        | 2000 lbs.          | 2000 lbs. | 2000 lbs.            | 2000 lbs.           | 2500 lbs.                                    | 2500 lbs.                   | 2500 lbs.                   | 3500 lbs.-2WD<br>3000 lbs.-4WD | 2000 lbs.         | 3000 lbs.                 | 3500 lbs.                 |
| Ratio                    | 4.27:1                           | 4.27:1             | 4.27:1    | None                 | None                | N/A  | N/A                         | 4.09:1                      | N/A - 2WD<br>4.09:1-4WD        | N/A               | 5.38:1                    | 4.89:1                    |

\*Consult detail specifications for other G.V.W.'s and tire sizes.

# Jeep®

VEHICLES

**KAISER Jeep CORPORATION • TOLEDO 1, OHIO**

WORLD'S LARGEST AND MOST EXPERIENCED  
MANUFACTURER OF 4-WHEEL DRIVE VEHICLES  
DISTRIBUTED BY:

**KAISER Jeep SALES CORPORATION • TOLEDO 1, OHIO**  
**KAISER Jeep INTERNATIONAL CORPORATION • TOLEDO 1, OHIO**  
**KAISER Jeep OVERSEAS S.A. • ZUG, SWITZERLAND**  
**KAISER Jeep OF CANADA LTD. • WINDSOR, ONTARIO**

Farm No. 62-14R1

Litho in U.S.A.

FROM

TO