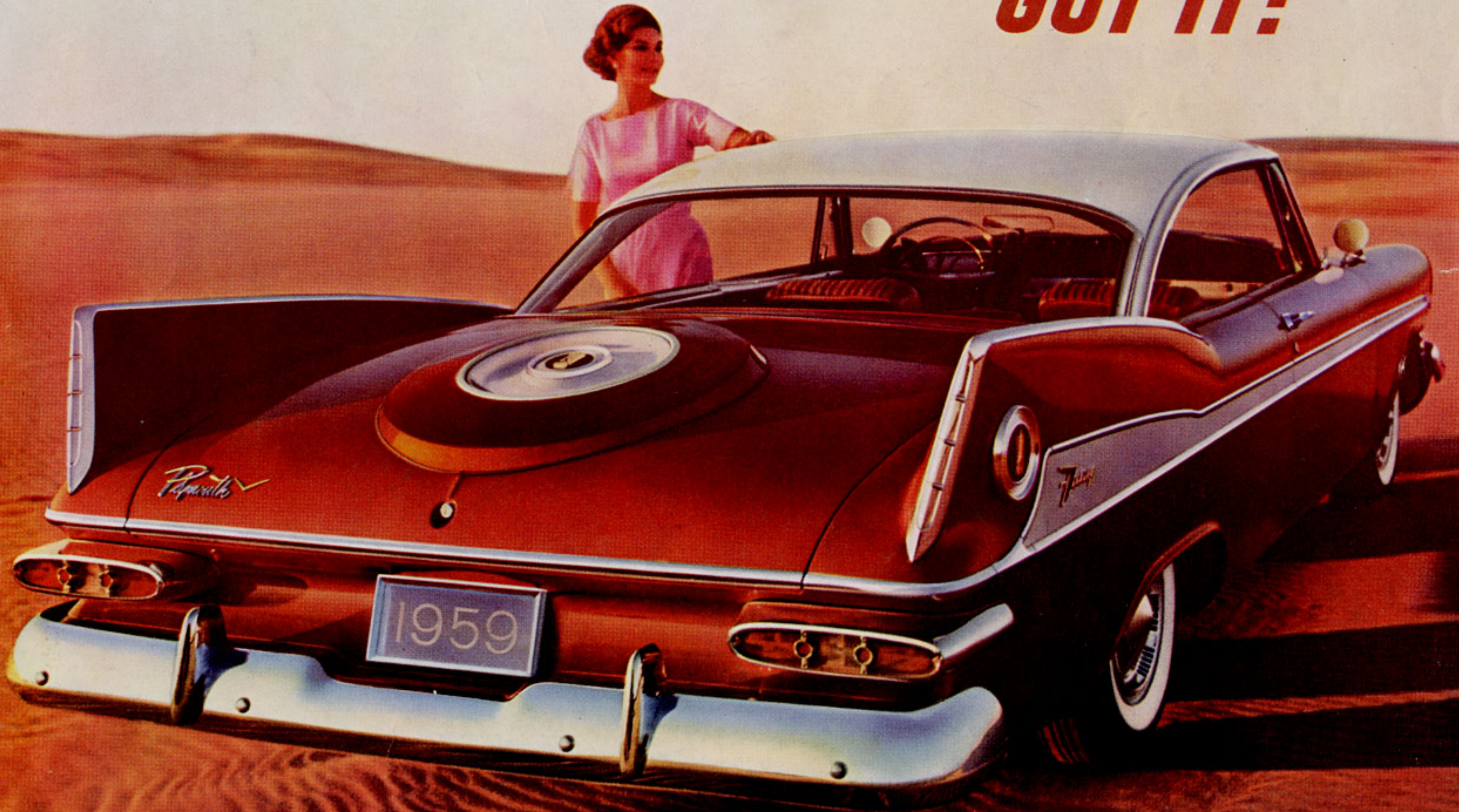


***IF IT'S NEW  
PLYMOUTH'S  
GOT IT!***







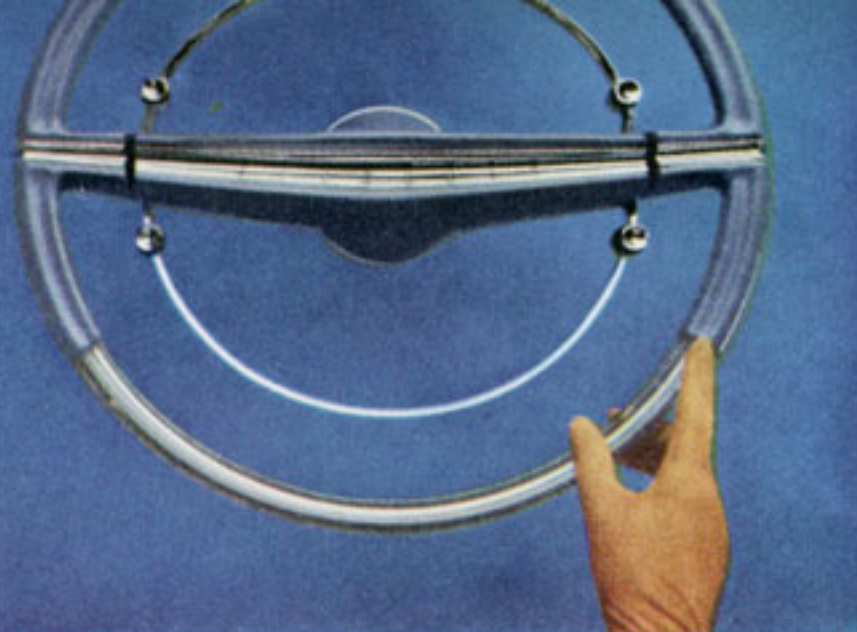
**HERE IS** the most exciting new car that the low-price field has seen in many a year! This magnificent Plymouth for '59 gives you more reasons for buying a new car than you've ever had, because it offers more fine car advances than any car at anywhere near its modest price! It's a light-hearted, youthful car—a new, fresh look in automobiles—and it performs with eagerness and spirit . . . a high-stepping, nimble-footed masterpiece of luxury and comfort . . . a joy to behold and heaven to drive!

**SWIVEL FRONT SEATS** of the new Sport Fury swing outward, at the touch of a finger, to face toward the curb. Open either door, swivel the seat and sit down. Then swivel to face the front, and shut the door. The seat locks itself securely into place. When you're riding two in front instead of three, you may pull down the broad arm rest between you. In the low-price field, only the competitively priced '59 Plymouth can offer you luxury car features like these. Unmistakably, it's today's best buy!

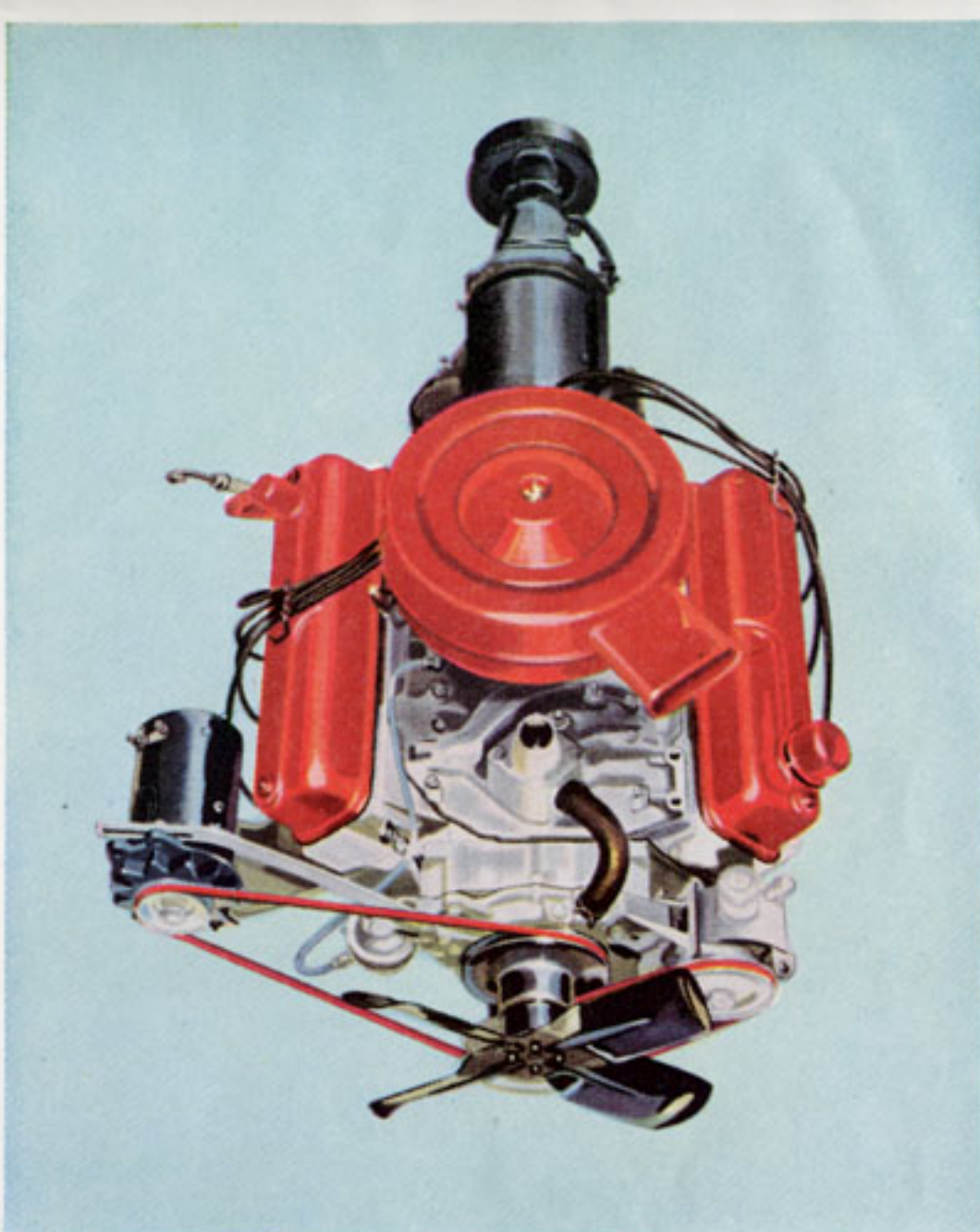




**POWER BRAKES** are optional at slight extra cost. Coupled with Plymouth's Total-Contact Brakes, they give you faster, smoother, safer stops—at the touch of the pedal. There's no nose-dive on stops—even when you jam your brakes down hard—thanks to Plymouth's Torsion-Aire suspension.



**POWER STEERING** is the Constant-Control, Full-Time type, rated by authorities as most advanced of all. By doing most of the work of steering, it relieves driving tensions on long trips and in heavy, downtown traffic and enables even frailest women to park with ease!



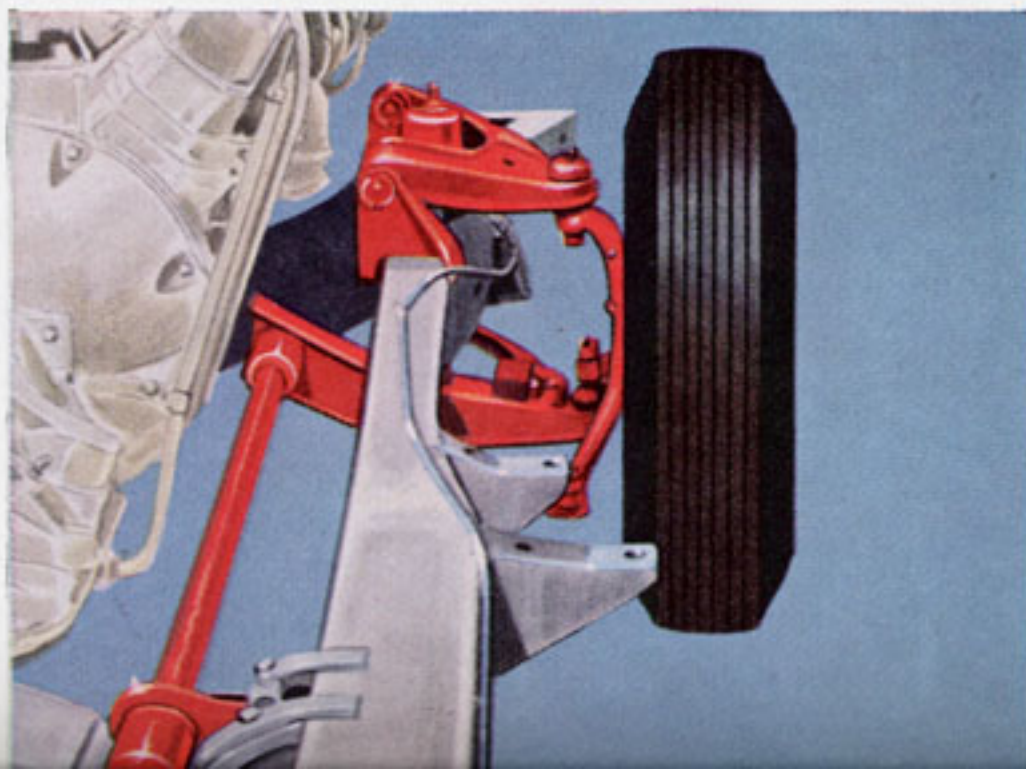
**NEW GOLDEN COMMANDO 395** is Plymouth's all-new optional V-8 for '59. 361-cubic-inch displacement, 10-to-1 compression ratio. Most advanced V-8 in any car, it develops 305 h.p. at 4600 rpm and 395 ft/lbs. torque at 3000 rpm. Standard Plymouth V-8 is the 230 h.p. *Fury V-800*, with 318-cubic-inch displacement and 9-to-1 compression ratio, which twice in succession won the Mobilgas Economy Run. *Fury V-800 with Super-Pak*, 260 h.p. high-performance version with 4-barrel carburetor and dual exhaust system is standard on Sport Furys and optional on all V-8 models. The 132 h.p. *PowerFlow "6"* is for those who want the utmost in economy and durability.

*Look at these  
fine car features*

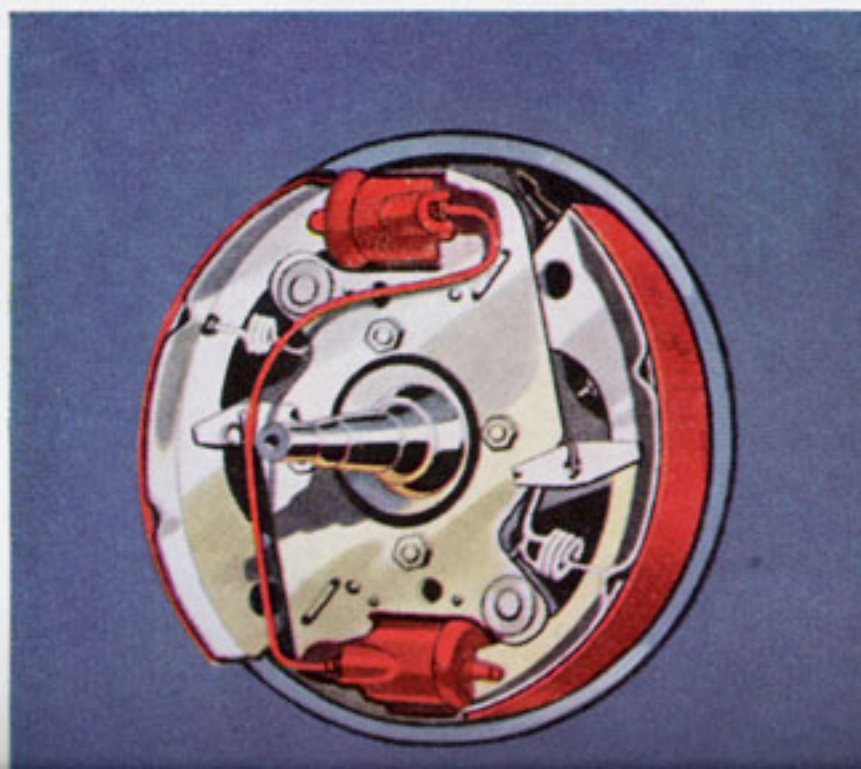
**MIRROR-MATIC REAR VIEW MIRROR** automatically dims glare from headlights of cars behind you. Automatic Beam Changer low-beams headlights when other cars approach you.



**TORSION-AIRE** suspension, standard on all models, employs front torsion bars to smother shocks, provide sports car handling. Optional Constant Level Torsion-Aire uses air bellows to keep car on even keel regardless of load or road.



**TOTAL-CONTACT BRAKES** have *two* cylinders in each front brake instead of just one. Pressure is exerted evenly over entire braking surface. Result: you stop smoother, linings last up to 30% longer!



**PUSH-BUTTONS** on right control heating, ventilating, defrosting. On left, push-buttons control TorqueFlite or PowerFlite drives.







Sport Fury Convertible, V-8



Belvedere Convertible, V-8

Choose from these '59 Plymouths



Sport Fury V-8 2-door Hardtop



Belvedere 4-door Hardtop, V-8 or 6



Fury 4-door Hardtop, V-8



Belvedere 2-door Hardtop, V-8 or 6



Savoy 4-door Sedan, V-8 or 6



Fury 2-door Hardtop, V-8



Belvedere 4-door Sedan, V-8 or 6



Savoy 2-door Sedan, V-8 or 6



Fury 4-door Sedan, V-8



Belvedere 2-door Sedan, V-8 or 6



Savoy 2-door Business Coupe, 6

REAR SPORT DECK is another fine car feature entirely new to low-price cars! This is but one of many advances that distinguish the new, youthful Plymouth for '59. Modern Fury styling emphasizes the longer, lower look and gives every '59 Plymouth a dash and distinction never before seen in cars priced down in the low-price field!

PLYMOUTH'S NEW CONTROL CENTER puts everything within easy reach and plain sight. You see the instrument cluster right through the new, transparent steering wheel; to right and left of wheel, within finger-tip reach are the push-buttons that regulate your automatic drive and your comfort controls—ventilating, heat, defrosting, air-conditioning. It's a modern assembly that you'll be proud to sit behind—and show your friends!





*'59 Plymouth Station Wagons  
are the biggest and  
roomiest in the field,  
and offer you more advances!*



*Custom Suburban 4-door (6 passenger) V-8 or 6, (9 passenger) V-8 only*



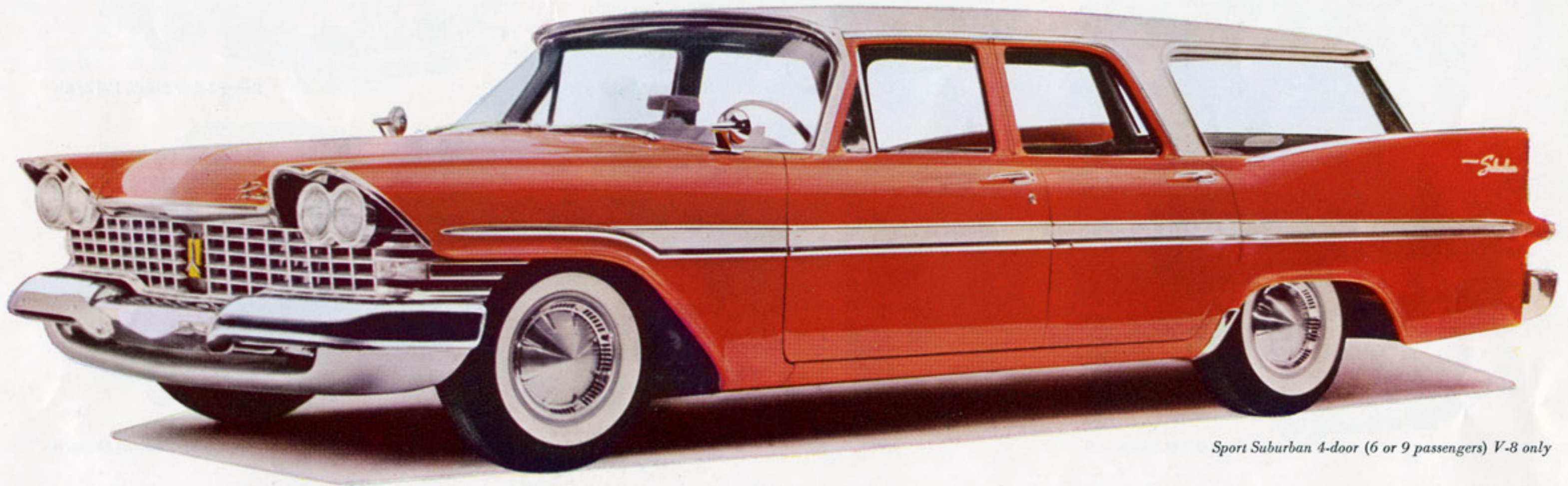
*Custom Suburban 2-door (6 passenger) V-8 only*



*DeLuxe Suburban 4-door (6 passenger) V-8 or 6*



*DeLuxe Suburban 2-door (6 passenger) V-8 or 6*



*Sport Suburban 4-door (6 or 9 passengers) V-8 only*

**REAR-FACING** third seat, a Plymouth *first*, folds flat into cargo deck when not in use. Full-size, it holds 3 big passengers. "Back steps" give easy entrance, exit.

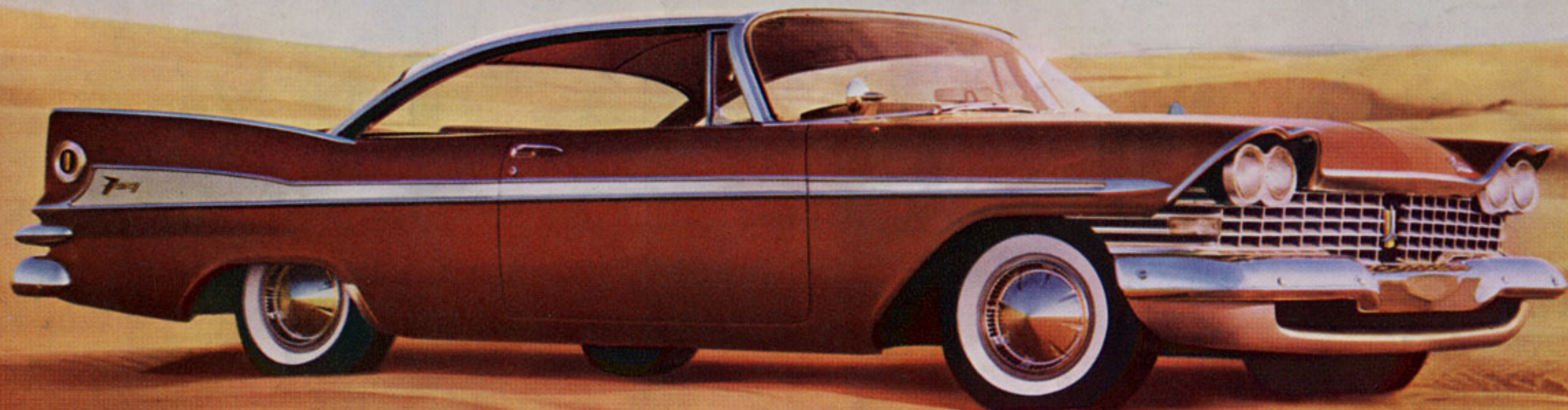
**DISAPPEARING TAILGATE WINDOW** is another Plymouth *first*. Electrically operated, it is standard on all 9-passenger models, optional at small extra cost on other Plymouth wagons.

**HUGE CARGO AREA** is possible because of Plymouth's big, 122-inch wheelbase. With rear seats folded, you get over 100 cubic feet of load space. Yet the *ride* is smooth as a luxury car!

**LOCKED LUGGAGE COMPARTMENT** (optional on 6-passenger models) holds valuables safely without necessity of locking entire car every time you get out.







## SPECIFICATIONS

**CHASSIS** Arc-welded frame with double-channel box-section side rails. Five sturdy crossmembers. X-member design on Convertible. Hydraulic 11-inch Total-Contact Brakes with Cyclebond lining. 184 sq. in. lining area. Internal expanding shoes with self-centering action. Two cylinders at each front wheel, one at each rear. Separate external contracting parking brake with standard transmission. Extra powerful expanding parking brake with PowerFlite and TorqueFlite transmissions.

**WHEELS AND TIRES** 14 x 5-inch Safety-Rim wheels with 7.50 x 14 four-ply low-pressure tubeless type tires. 14 x 5½-inch wheels and 8.00 x 14 tires on 9-passenger station wagon models, optional at extra cost on all other models.

**SUSPENSION** Front: Combined torsion bars and ball joints. Lower unsprung weight. Dip-control upper arms. Wide-angle strut-supported lower arms. 100% rubber isolation. Oriflow shock absorbers. Rear: 2½-inch outboard-mounted springs with 5 leaves on V-8 models, 6 leaves on station wagons, 4 leaves on 6-cylinder passenger cars and 5 leaves with Constant Level Torsion-Aire suspension. 100% rubber isolation. Sea-leg mounted Oriflow shock absorbers.

**STEERING** Worm and ball bearing roller gear. Symmetric idler arm linkage for maximum control. Rubber-isolated pivots. Ball-joint steering knuckles for easy handling. Over-all steering ratio 26.8:1. Ratio with Power Steering 19.8:1.

**TRANSMISSIONS AND DRIVE TRAIN** TorqueFlite: Fully automatic 3-speed Push-Button transmission with torque converter; optional at extra cost on all V-8 models. PowerFlite: Fully automatic 2-speed Push-Button transmission with torque converter; optional at extra cost on all models except when equipped with New Golden Commando 395 engine. Synchro-Silent manual 3-speed transmission standard on all models. Overdrive available except with New Golden Commando 395 engine. Hotchkiss drive through rear springs. Hypoid rear axle.

**STANDARD REAR AXLE RATIOS (ALL MODELS)** TorqueFlite V-8—choice of 2.93:1 or 3.31:1. PowerFlite V-8—3.31:1. PowerFlite 6-cylinder—3.73:1. Manual V-8—3.54:1. Manual 6-cylinder—3.73:1. Overdrive V-8—3.90:1. Overdrive 6-cylinder—4.10:1.

**ELECTRICAL SYSTEM** Heavy-duty 12-volt 50-ampere-hour battery. High capacity 35-ampere generator; automatic voltage and current control. Ignition key start switch. Lighting circuit protected with circuit breaker. Permanent plastic-coated wiring. Resistor-type ignition system. Automatic mechanical and vacuum spark control. Splashproof distributor.

**FUEL SYSTEM** Lightweight aluminum carburetor. Automatic manifold heat control. New dry paper replaceable element air filter. Dual fuel filtration on V-8

models includes woven plastic filter in gas tank and extra-fine ceramic filter at carburetor with magnetic core; 6-cylinder models have woven plastic filter at gas tank. Fuel capacity 20 gallons (23-gallon tank optional); 22 gallons on wagons.

**GENERAL DIMENSIONS** Wheelbase 118 inches (122 inches on station wagons). Over-all length 208.2 inches (wagons, 214.0 inches). Over-all width 78.0 inches.

**BODY CONSTRUCTION** All-steel welded, completely rust-proofed and insulated Safety Body. Channeled and ribbed floor pan. Box-section reinforcements around all window and door openings. Baked super-enamel finish.

**GOLDEN COMMANDO 395 ENGINE** Optional at extra cost in all models except Savoy business coupe. Advanced Deep-Block design 8-cylinder V-type. Horsepower 305 at 4600 RPM. Taxable horsepower 54.4. Torque 395 ft.-lbs. at 3000 RPM. Compression ratio 10.0 to 1. Bore 4.12 inches. Stroke 3.38 inches. Piston displacement 361 cubic inches. Special design concentric dry replaceable element air filter. Overhead valves. Hydraulic valve tappets. High-load valve springs equipped with anti-surge dampers. Pistons especially designed for high-compression ratio. Special high-performance camshaft. Special high-performance resistor-type spark ignition system. Automatic mechanical and vacuum spark control. Splashproof dual-breaker distributor. Spool-type rubber shear engine mounts. Crankshaft vibration damper. Rotary oil pump. Full-Flow oil filter. Oil capacity 5 quarts. 6 quarts with filter change. Full-pressure lubrication to all crankshaft, camshaft, and connecting rod bearings and to valve rocker arms and tappets. Special low-restriction dual-exhaust system.

**FURY V-800** Standard on all V-8 models except Sport Fury. 8-cylinder overhead-valve V-type. Horsepower 230 at 4400 RPM. Taxable horsepower 48.9. Torque 340 ft.-lbs. at 2400 RPM. Compression ratio 9.0 to 1. Bore 3.91 inches. Stroke 3.31 inches. Piston displacement 318 cubic inches. 2-barrel downdraft carburetor. Rotary oil pump. Shunt-type oil filter. Oil capacity 5 quarts. Full-pressure lubrication to all crankshaft, camshaft, and connecting rod bearings and to valve rocker arms and tappets.

**FURY V-800 WITH SUPER-PAK** Standard equipment on Sport Fury, available in all other V-8 models, at extra cost. Basic specifications same as for Fury V-800 above, except for the following: Horsepower 260 at 4400 RPM. 48.9 taxable horsepower. Torque 345 ft.-lbs. at 2800 RPM. 4-barrel carburetor with matching intake manifold and special air filter. High-performance camshaft and distributor. Special design, large diameter, free-flow dual exhaust system.

**POWERFLOW 6** Available on all Savoy and Belvedere models except Convertible. Also available on 4-door, 6-passenger Custom Suburban and all DeLuxe Suburban models. 6-cylinder in-line L-head valve arrangement. Horsepower 132 at 3600 RPM. Taxable horsepower 25.4. Torque 205 ft.-lbs. at 1200 RPM. Compression ratio 8.0 to 1. Bore 3.25 inches. Stroke 4.63 inches. Piston displacement 230 cubic inches. Rotary oil pump. By-pass oil filter standard on all but Savoy models. Oil capacity 5 quarts. Full-pressure lubrication to all crankshaft, camshaft, and connecting rod bearings.

**COOLING SYSTEM** Coolant capacity 318" V-8 engines 20 quarts; with heater 21 quarts; 361" V-8 engine 16 quarts; with heater 17 quarts; 6-cylinder 13 quarts; with heater 14 quarts. High-pressure (14 psi) system. 4-blade wing-tipped fan. Full-length water jacketing. Ball bearing water pump with permanent seal. Series-flow porting on 361" engine. 180° thermostat standard on all.

### SPECIFIC BODY DIMENSIONS

	4-door Hardtop	4-door Sedan	Club Sedan	2-door Hardtop	Convert- ible
Front hiproom.....	63.0"	63.0"	63.0"	63.0"	63.0"
Rear hiproom.....	62.7"	62.7"	62.7"	56.0"	56.0"
Front shoulder room.....	60.5"	60.5"	0"	61.0"	61.0"
Rear shoulder room.....	60.4"	60.4"	60.4"	60.5"	55.0"
Front legroom.....	45.5"	45.5"	45.5"	45.5"	45.5"
Rear legroom.....	39.0"	41.5"	41.5"	36.5"	36.5"
Front headroom.....	34.4"	35.7"	35.7"	33.7"	35.0"
Rear headroom.....	34.5"	34.2"	34.2"	34.0"	35.2"
Car height—loaded.....	54.6"	56.6"	56.6"	54.0"	54.8"

**ACCESSORIES** Many accessories have been engineered especially for the new Plymouth to make your driving easier and riding more enjoyable. Ask your dealer about these:

Push-Button PowerFlite (2-speed fully automatic transmission) • Push-Button TorqueFlite (3-speed fully automatic transmission) • Sure-Grip Differential • Overdrive • Safety-Sure Power Brakes • Constant Control Full-Time Power Steering • Power Windows • Airtemp Air Conditioner • Fresh-Aire Heating-Defrosting System • Instant gas heating system • Custom Push-Button Radio • Rear-Seat Speaker • Sweep-Second Electric Clock (standard on Fury models) • Chrome Bumper Wing-Guards • Rubber Bumper Protectors • Wheel Covers • Safety-Padded Instrument Panel • Safety Padded Sun Visors • Concealed Luggage Compartment (6-passenger station wagons) • Power Tailgate Window • Solex-Tinted Glass • Undercoating • Whitewall Tires • Mirror-Matic Rear View Mirror • Remote Control Rear View Mirror • Prism Rear View Mirror • Automatic Beam Changer • Constant Level Torsion-Aire • Sport Deck • Swivel Seats.

For specifications of the new Plymouth STATION WAGONS, ask your dealer for the special STATION WAGON BOOKLET.

Cars illustrated are shown with items of optional equipment available at extra cost.

The policy of Plymouth Division of Chrysler Corporation is one of continual improvement in design and manufacture wherever possible to assure a still finer car. Hence, specifications, equipment and prices are subject to change without notice.