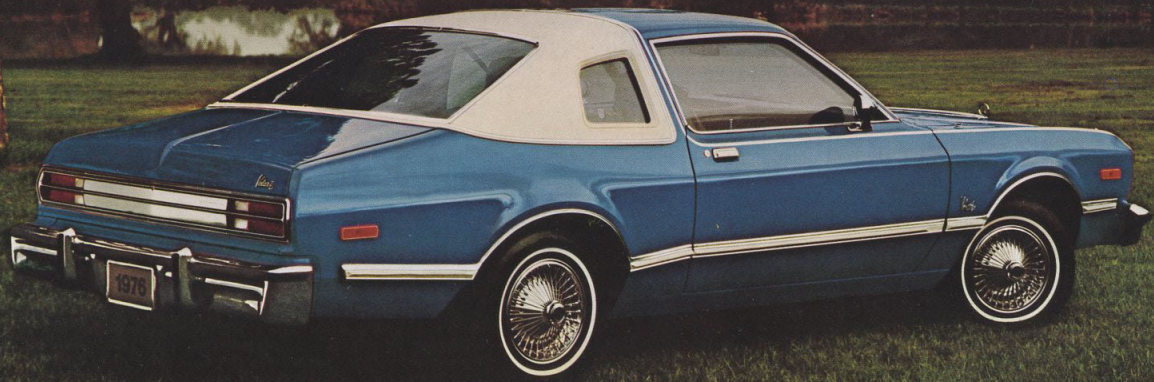


1976
Plymouth
Volaré

THE NEW SMALL CAR WITH THE ACCENT ON COMFORT
VOLARÉ PREMIER/VOLARÉ CUSTOM/VOLARÉ/WAGONS





Volaré Premier Coupe

Full-size comfort in a new small car.

Right about now you're probably thinking about a small, more economical car. But you're not ready to give up the comfort and convenience associated with a big car. Along comes Volaré, to prove that you can have your economy and enjoy it, too.

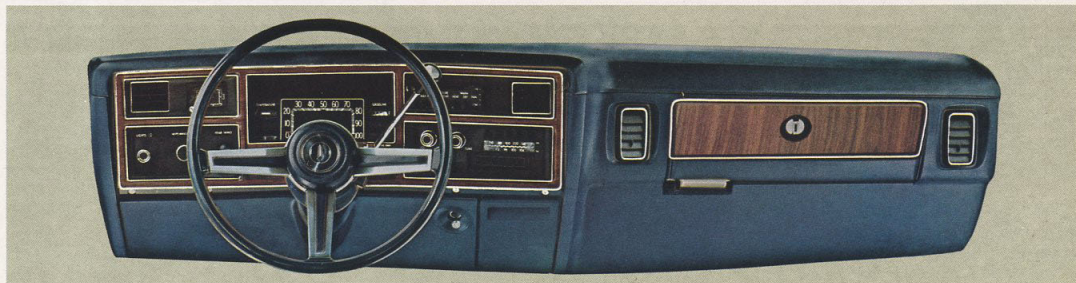
This 1976 Volaré has a European-style seating position that gives you a heightened sense of space and visibility. With sweeping glass areas, large door openings and a surprising amount of head room, leg room, and hip room for relaxed, uncrowded comfort.

The Volaré Premier Coupe has fine-car features like vinyl roof, color-keyed body side molding, shag carpeting, dual reclining 60/40 split-bench seats, luxury steering wheel, premium door trim, with pull-handles and carpeted lower panels, premium wheel covers, carpeted trunk and power steering. Volaré Premier's economy potential starts with the 225 Six, or the 318 V-8 with standard TorqueFlite automatic transmission. Along with a new Isolated Transverse Suspension System that helps produce that smooth, comfortable big-car ride.

The options you'd expect with a fine car are detailed on Page 15. Like power windows, power seats, power door locks, new rapid cool-down air conditioning and stereo AM/FM radio. New Volaré Premier. The new small car with the accent on comfort.



Optional premium vinyl bucket seats (individually adjustable), soft door trim panels and shag carpets.



Fully appointed modular instrument panel allows easy service access to each individual operational control and gauge. Note the lockable glove box and smart wood-grained inserts.

Shown at left, Volaré Premier 2-Door Coupe with standard vinyl Landau roof and elegant opera windows.

VICTORIA STATION



RESTAURANT
BAR
CIGARETTES
COFFEE
TEA
ICE CREAM
SODA
HOTELS
MOTOR HOTEL
BUSINESS HOTEL
COURTESY HOTEL
MOTOR HOTEL
BUSINESS HOTEL
COURTESY HOTEL

Malibu

1976



Volaré Custom 2-Door Coupe has standard deluxe all-vinyl bench seating, thick color-keyed carpeting and soft door trim panels.



Optional all-vinyl full-foam bucket seats are individually adjustable for comfort.

Volaré Custom 2-Door Coupe

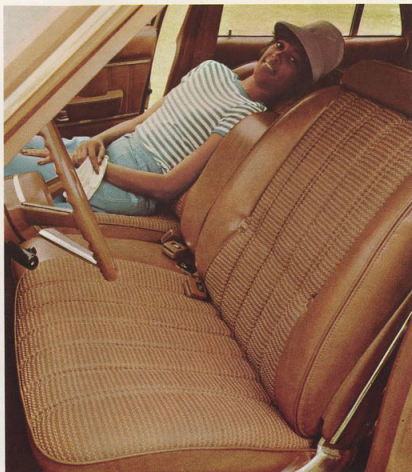
The new small car with the great quiet ride. Now you don't have to give up the comfortable ride of a big car when you buy a small economy car. Volaré has come up with a new Isolated Transverse Suspension System combined with comprehensive noise-reducing components. What you experience is firm, positive control and stability, with amazingly little vibration or road shock transmitted to the passenger compartment. And Volaré Custom has big ideas about interior comfort. Expansive glass areas.



Volaré 2-Door Coupe with "Road Runner" optional package.

Long doors. And a new seating position with roominess in all directions, in the manner of a European car. Volaré Custom has big economy built into fuel-conserving engine modifications. The aerodynamics of Volaré's design reduce air drag, resulting in good fuel economy and handling characteristics at highway speeds. Big-car comfort and ride — small car economy. That's what the new Volaré Custom is driving at. And it gets there.





Optional 60/40 split-bench with dual reclining seats trimmed in woven, breathable vinyl plus armrest. Standard all-vinyl bench seat not shown.



Family-sized 71.9 cu. ft. cargo area.



Cylinder-assisted liftgate door is easy to open, convenient for loading.



Rear air deflector and roof rack.



Standard spare tire well is recessed below cargo area. Lockable side storage compartments standard on Premier.

Volaré Premier Wagon

Volaré Wagons. They handle you and your cargo with care.

You used to buy a big wagon for the ride and roominess. Or a small wagon for the easy handling and operating economy. And now you can buy a new Volaré Wagon for the ride, the roominess, the easy handling and operating economy.

The European-style seating position creates a sense of spaciousness. There's plenty of head room, leg room, hip room, cargo space and broad glass areas for excellent visibility.

Between you and the road, Volaré has a new Isolated Transverse Suspension System that helps

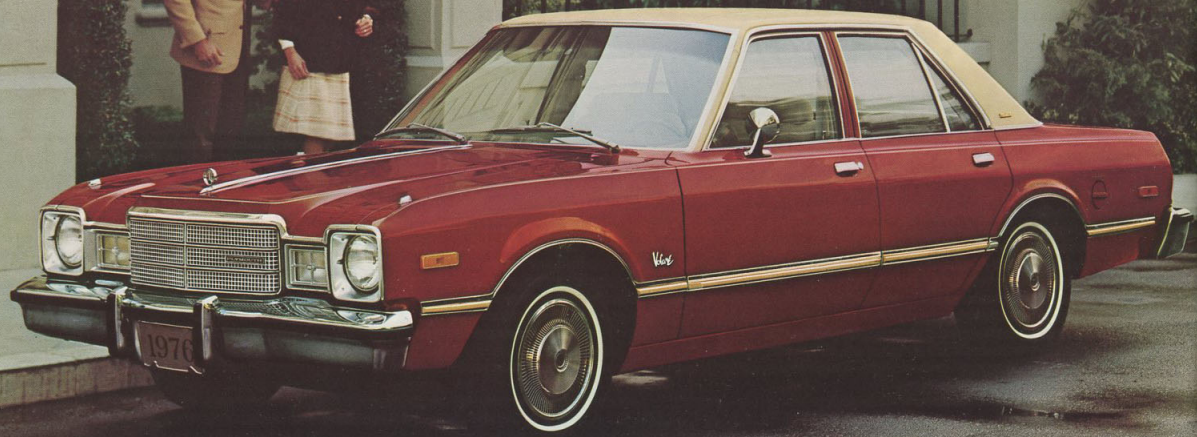


Volaré 6-passenger wagon.

produce a quiet, comfortable ride. And a unique blend of handling stability and control that's backed up by noise-reducing components and accoustical materials.

With the 225 Six or 318 V-8 you can expect good fuel economy. Low idle speeds, lean mixtures, modified Cleaner air system, 3-speed manual or Overdrive-4 manual transmission, Torqueflite automatic transmission, and optional radial tires. Volaré, 1976.

It's an American "first" in small wagon design and engineering.





Optional cashmere-like cloth-and-vinyl covers shown on standard 60/40 dual recliner bench seats with center armrest. (Standard all-vinyl covers not shown.)



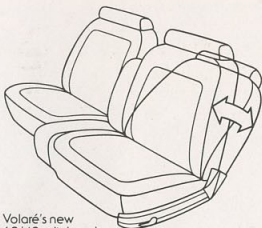
Spacious rear seats also shown in cashmere-like cloth-and-vinyl. (Standard seat belts not shown.) The shag carpets, soft door trim with carpeted lower panels, and pull-handles are standard in front and rear.

Volaré Premier 4-Door Sedan

The great American small car.

It's a major innovation in American small car design. Volaré has adapted the seating position of a European car, to give you a new feeling of spaciousness and visibility, with a surprising amount of head room, leg room and hip room. And all this comfort with a small-car wheelbase of 112.5 inches. Even the spare tire is recessed in a floor well to give you more trunk space. That's great.

And Volaré Premier Sedan takes fine-car luxury features like a standard vinyl roof, 60/40 dual reclining seats, carpeted trunk, luxury steering wheel, modular instrument panel with lockable glove box, premium wheel covers,



Volaré's new 60/40 split-bench recliner seat with folding center armrest. Each seat-back adjusts individually, to a choice of 14 different positions.

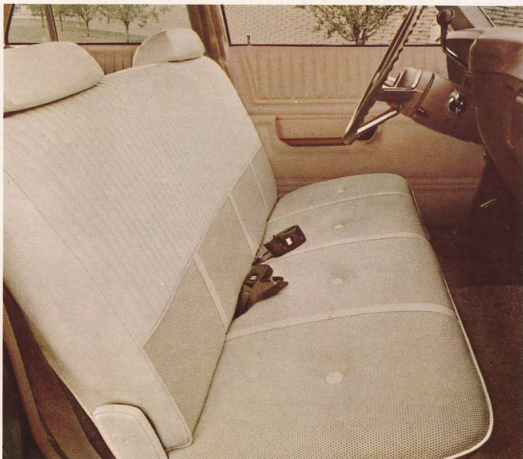
TorqueFlite automatic transmission, and power steering and makes that standard equipment.

For options you can have power windows, power seats, 4-speaker stereo, AM/FM radio, rapid cool-down air-conditioning, tilt steering column and more. That's great, too.

But one of Volaré's greatest assets is a new Isolated Transverse Suspension System, fully isolated, with rubber mounts at friction points. It gives Volaré an outstanding combination of quietness, fine-car ride and positive handling.

For economy, you have a 225 Six or 318 V-8 with TorqueFlite automatic transmission. New engine modifications, even Volaré's aerodynamics put it in a strong economy position for 1976. And there couldn't be greater reason to put yourself in a Volaré Premier.





Volaré standard all-vinyl bench seat with color-keyed carpeting and soft door trim.



Volaré Custom standard deluxe cloth-and-vinyl bench seat with padded deluxe door trim and color-keyed carpeting.

Volaré and Volaré Custom 4-Door Sedans

Economy you can feel comfortable with. Volaré Custom has taken a European-style position on interior seat design and placement. And come up with exceptional head room, leg room, and hip room. Wide sweeping glass areas give you a nice uncrowded feeling and excellent visibility. And Volaré's long doors let you in and out with ease.

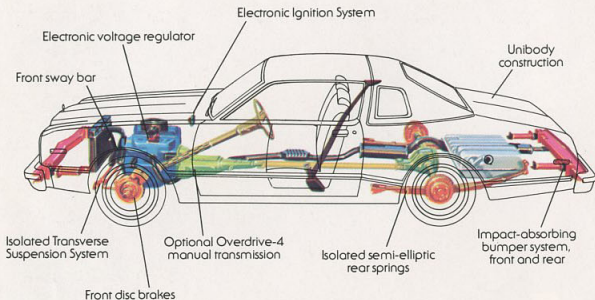
And on the road, that big-car ride is the direct result of a new Isolated Transverse Suspension System,



Volaré Custom 4-Door Sedan.

equipped with a standard front sway bar. "Quiet" components like rubber suspension mounts isolate road noise. And reduce a lot of the vibration you normally expect in a small-car ride.

Along with all Volaré Custom's comfort, quiet and luxury interior detail, you have economy in many forms: Engine modifications like low idle speeds, optional Overdrive-4 manual transmission and aerodynamic design for reduced air drag. Small-car economy — big-car ride. That's how Volaré gets it together for you in 1976.



Volaré has engineering advances going for it.

Unibody construction. More than 4,000 welds produce an all-welded unit of great structural integrity and strength. Dash panel and plenum chamber are a single stamping. An inner roof panel combines roof side rails, windshield and rear window headers and roof bows into a single panel. Shoulder belt retractors are welded to this unit. High-strength low alloy steel is used to minimize weight of side door beams. Wheel openings are flared to enhance rigidity of fenders.

Electronic Ignition System. Helps deliver sure starting voltage in any weather. Has no points or condenser to replace.

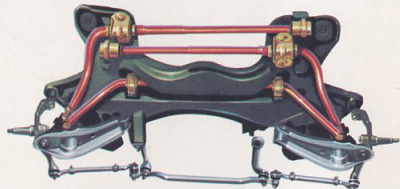
Electronic voltage regulator. Protects battery from overcharging. No moving parts — diodes, transistors and space age circuitry provide a highly reliable unit.

Impact-absorbing bumper system. Protection against minor damage, both front and rear, including protective vertical strips and reinforcement at the corners.

Front disc brakes. Standard equipment on all Volaré models, for smooth, sure stopping. Power front disc brakes are standard on all wagons and 8-cylinder models.

Front sway bar. Standard equipment on all Volaré models, and an integral part of Volaré's comfortable ride. (See diagram of total suspension system).

New Isolated Transverse Suspension System



One big difference between Volaré and many other small cars is the way it handles bumps.

Small car suspension systems are usually bolted directly to the chassis, often with only one set of rubber mounts. When you hit a bump, the shock travels from the wheels through the springs and chassis.

But Volaré's Isolated Transverse Suspension System is designed to swallow bumps. At the heart of the system lies the complicated-looking element pictured above. It's called a "cross-member" and it separates the suspension system from the chassis with

two sets of rubber mounts. The cross-member sits just under the engine. On the bottom, the front torsion bars are attached with two thick rubber mounts. On the top, the Unibody is attached with four rubber mounts. Now when you hit a bump, the shock gets partially lost in the first set of rubber mounts, partially lost in the second. So less of it gets to you.

Coupled with more noise-reducing insulation than you'd expect in a small car, Volaré's Isolated Transverse Suspension System gives you a ride that's as smooth and comfortable as the ride in larger cars.

Isolated semi-elliptic rear springs. Isolated from the rear axle by rubber spring-seat iso-clamps and from the body by oval front bushings, as in our full-size cars.

Optional 4-speed manual overdrive transmission. An important economy feature available with either the 225 Six or 318 V-8 engines.

Seating position and visibility. The position of the seats above the floor and the placement of the steering wheel give a feeling of openness to the passenger compartment. Expansive glass area, plus cowl and belt line low in relation to driver's position, combine to produce excellent visibility.

Entry and exit space. Doors are large and hinged to allow easy access to the interior. In fact, Volaré's doors are longer than those of many leading compacts.

Serviceability. Great consideration has been given to simplifying the servicing process in all Volaré models. For instance, Volaré's modular instrument panel bezel can be removed by unscrewing four screws. It isn't necessary to drop the steering column.

Sound insulation and "quiet" systems. In addition to the low noise levels achieved through Volaré's new fully-isolated suspension, the deluxe sound insulation system has extensive acoustical materials applied wherever wind noise or vibration can enter the passenger compartment. (Standard on Premier models, optional on others).

Economy engineering. Both the 225 Six and 318 V-8 have been refined for good fuel economy and driveability. Low idle speeds, lean mixtures, new carburetor and spark advance calibrations, and long duration choke provide good

cold-start driveability and fuel economy.

Aerodynamic design. Wind tunnel tests show a low air drag factor for Volaré. This aerodynamic advantage in Volaré's design contributes to fuel economy, handling characteristics and low wind noise at highway speeds.

1976 Safety Features. Brakes — front disc brakes and foot-operated parking brake are standard on all cars. Power front disc brakes are standard on Volaré Wagons and other 8-cyl. models.

Windshield zone — Volaré's hood, fenders and other body parts are designed to meet new testing standards.

Windshield retention — Designed for impact protection in 30 mph test.

STANDARD SPECIFICATIONS	
Engine	225 6-cyl. 318 V-8
Transmission	3-speed manual
Suspension	Front: Transverse torsion bars with sway bar Rear: Asymmetrical leaf springs
Tires	D78x14 B5W; E78x14 B5W; F78x14 B5W
Wheels	14x5.0 Sedans; 14x5.5 Wagons
Brakes	Front: Disc; Rear: Drum
Electrical System	Battery: 305 amp, 225 6 318 CID; 440 amp, 360 CID; Alternator: 41 amp; Electronic Ignition System: Transistorized voltage regulator
Fuel Tank	18.0 gallons
Trunk Capacity	Sedans 14.2 cu. ft.; Wagons 71.9 cu. ft.; Coupes 14.5 cu. ft.

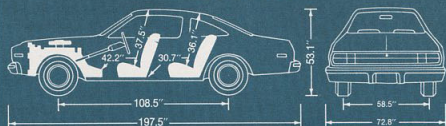
REAR AXLE AVAILABILITY				
Engine	Transmission	Standard	Optional	Sure Grip
225 Six	3-speed manual ¹	3.23	2.94 ²	3.21
	4-speed manual ¹	3.21		
	Overdrive-4 TorqueFlite automatic	2.71	2.94, 3.21	3.21
318 V-8	3-speed manual ²	2.45	2.94, 3.21	2.71, 3.21
	4-speed manual ²	2.94	3.21	3.21
	Overdrive-4 TorqueFlite automatic	2.45	2.94, 3.21	2.71, 3.21
360 V-8 ²	TorqueFlite automatic	2.76	2.45, 2.94, 3.21	2.71, 3.21

¹N/A in Calif. on Wagons

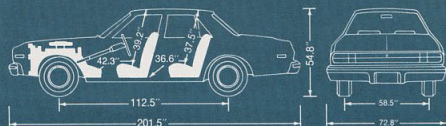
²N/A in Calif.

1976 Volaré Dimensions

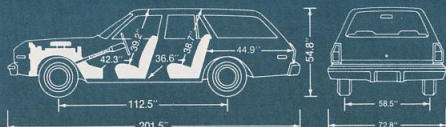
Volaré Coupe



Volaré Sedan



Volaré Wagon

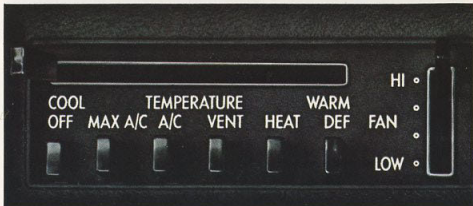




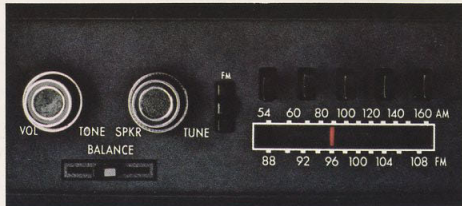
Optional A34 Trailer-Towing package for light loads. (See Trailer-Towing Catalog for details.)



Manually-operated sun roof.



Air conditioning dehumidifies, cools or heats air for year-round comfort.



AM/FM 4-speaker stereo radio for your listening pleasure.



Secure power door locks.



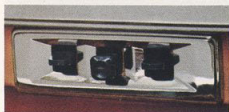
Auto-Speed Control.



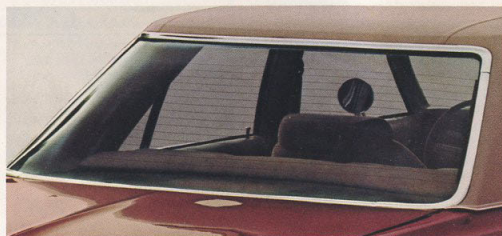
Tilt steering column.



Power windows.



Six-way power seats.



Electric rear window defroster helps clear frost, ice and snow.

OPTIONS

Volaré is the small car with the fine-car choice of optional accessories.

Volaré is the small car with the fine-car choice of optional accessories. You don't have to give up the comfort and convenience you enjoy in a big car when you buy a small car. As long as the small car is a 1976 Volaré. Power assists such as power windows, power door locks and six-way power seats are available. Volaré offers you a tilt steering column that adjusts up and down for individual comfort. Or consider a full four-speaker stereo AM/FM radio system. (You might also want to order the deluxe sound insulation option — standard on Premier models — to minimize outside noise interference with your stereo quality.) This year, you can have the luxury of handsome 60/40 split-bench reclining seats on Volaré Premier models. And the pleasure of air-conditioning is even more attractive with Volaré's new rapid cool-down. You can direct up to 14% of the cool air-flow to the lower legs and feet.

Quiet operation is assured by rubber evaporator mounts and a sound-absorbing housing for the blower. The Fuel Pacer System helps you economize with a fender-mounted light that comes on when you accelerate too rapidly and are using fuel inefficiently. Another great convenience is an electric rear window defroster, with heating wires bonded to the window glass. Volaré's Light Trailer-Towing Package can handle a load weight of up to 2,000 pounds. You can add it to any Volaré equipped with TorqueFlite automatic transmission. On the road, you can look for controlled fuel usage and driving pleasure — from Auto-Speed Control. It lets you select and hold a steady highway speed.

For these and many more option availabilities, just check this Volaré chart.

You'll find the optional equipment you want. And you won't have to buy a full-size car to get it.

	Volaré 2-Door Coupe	Volaré 4-Door Sedan	Volaré Wagon	Custom 2-Door Coupe	Custom 4-Door Sedan	Premier 2-Door Coupe	Premier 4-Door Sedan	Premier Wagon	Check List
Comfort/Convenience									
Air Conditioning	0	0	0	0	0	0	0	0	
Electric Clock	0	0	0	0	0	5	5	0	
Console	0	N/A	N/A	0	N/A	0	N/A	N/A	
Defogger, Rear Window (Blower)	0	0	N/A	0	0	0	0	N/A	
Defroster, Rear Window, Electric	0	0	0	0	0	0	0	0	
Deluxe Sound Insulation Package	0	0	0	0	0	5	5	0	
Gas Cap, Locking	0	0	0	0	0	0	0	0	
Tinted Glass, All Windows	0	0	0	0	0	0	0	0	
Inside Hood Release	0	0	0	0	0	0	0	0	
Dual Horns	0	0	0	0	0	5	5	0	
Light Package	0	0	0	0	0	0	0	0	
Color-keyed Protective Floor Mats	0	0	0	0	0	0	0	0	
Power Steering (Std. 8-cyl. Premier Wagons)	0	0	0	0	0	5	5	0	
Power Disc Brakes (Std. 8-cyl.)	0	0	5	0	0	5	5	5	
Power Bench Seat	0	0	0	0	0	N/A	N/A	0	
Power Bucket or 60/40 Bench Seats	0	N/A	N/A	0	0	0	0	0	
Power Door Locks	0	0	0	0	0	0	0	0	
Power Windows	0	0	0	0	0	0	0	0	
AM or AM/FM Radio	0	0	0	0	0	0	0	0	
AM/FM Stereo Radio (2 front, 2 rear speakers)	0	0	0	0	0	0	0	0	
Rear Speaker, Single	0	0	0	0	0	0	0	0	
Automatic Speed Control	0	0	0	0	0	0	0	0	
Air Deflector	N/A	N/A	0	N/A	N/A	N/A	N/A	0	
Cargo Compartment Carpet and Storage Bins	N/A	N/A	0	N/A	N/A	N/A	N/A	5	
Luggage Rack	N/A	N/A	0	N/A	N/A	N/A	N/A	0	
Manual Sun Roof	0	N/A	N/A	0	N/A	0	N/A	N/A	
3-Speed Windshield Wipers	0	0	0	0	0	0	0	0	
Decar/Dress-up									
Vinyl roof	0	0	N/A	0	0	5	5	N/A	
Front and Rear Bumper Guards	0	0	0	0	0	0	0	0	
Protective Bumper Rub Strips, Front and Rear	0	0	0	0	0	0	0	0	
Left Outside Remote-control Mirror, Chrome	0	0	0	0	0	0	0	0	
Left and Right Remote-control Outside Mirrors, Chrome	0	0	0	0	0	0	0	0	
Dual Sport-styled Remote-control Outside Mirrors	0	N/A	N/A	0	N/A	0	N/A	N/A	
Belt Molding	0	0	0	5	5	5	5	5	
Wide Body Side Moldings — Color-keyed	N/A	N/A	0	5	5	5	5	5	
Door Edge Protectors	0	0	0	0	0	0	0	0	
Upper Door Frame Molding	N/A	0	0	N/A	0	N/A	5	5	
Wheel Lip Molding	0	0	0	N/A	N/A	N/A	N/A	N/A	
Luxury Steering Wheel	0	0	0	0	0	5	5	0	
Tilt Steering Wheel	0	0	0	0	0	0	0	0	
Undercoating and Hood Pad	0	0	0	0	0	5	5	0	
Deluxe Wheel Covers	0	0	0	0	0	N/A	N/A	0	
Premium Wheel Covers	0	0	0	0	0	5	5	0	
Wire Wheel Covers	0	0	0	0	0	0	0	0	
Rallye Road Wheels	0	0	0	0	0	N/A	N/A	0	
Chrome-styled Road Wheels	0	0	0	0	0	0	0	0	
Road Runner Decar Package	0	N/A	N/A	N/A	N/A	N/A	N/A	N/A	
SpaceMaker Package (fold down rear seat)	0**	N/A	N/A	0	N/A	N/A	N/A	N/A	
Two-tone Decar Package	N/A	N/A	N/A	0	N/A	N/A	N/A	N/A	
Trailer-Towing (A-34 light duty)	0	0	0	0	0	0	0	0	
Performance									
Axle - Sure Grip Differential	0	0	0	0	0	0	0	0	
Heavy-duty Suspension	0	0	5	0	0	0	0	5	
Battery - 500-amp Long Life	0	0	0	0	0	0	0	0	
Calif. Emissions Control Sys. & Testing (TorqueFlite-req'd)	0	0	0	0	0	0	0	0	
318 V-8 Single Exhaust 2-V w/air pump*	0	0	0	0	0	0	0	0	
360 V-8 Single Exhaust 2-V (N/A Calif.)	0	0	0	0	0	0	0	0	

0 - Optional 5 - Standard N/A - Not Available *N/A-Calif. buns unloaded fuel. **With Road Runner Package only.

1976 Volaré Standard Features

Volaré standard features (including Volaré Wagon) • Drip moldings • Quarter window reveal moldings • Bright grille surround moldings • Low-back bench seats with applied head restraints • Color-keyed carpeting • Color-keyed restraint system • Dome light • Heater and defroster • Cleaner air system • 225 Six or 318 V-8

- Isolated Transverse Suspension System
- Concealed spare tire storage • Electronic Ignition System • 3-speed fully-synchronized manual transmission
- Electronic voltage regulator • Front sway bar • Front disc brakes (power assisted on wagon).

Volaré Custom standard features (Volaré features, with the following changes) • Cigarette lighter • Wood-grain instrument panel cluster trim • Deluxe pleated vinyl or cloth-and-vinyl bench seats • Rear deck lower applique

- Belt and coupe B-pillar molding • Body side and partial wheel lip molding • Rear armrests with ash receivers.

Volaré Premier Coupe & Sedan standard features (Volaré Custom features, with the following changes) • Chrome grille insert • 60/40 split bench with center armrests and dual reclining seat-backs • Shag carpeting • Luxury door trim panels, carpeted lower door panels, door pull-handles • Premium wheel covers • Luxury 3-spoke steering wheel • Automatic transmission

- Power disc brakes • Power steering • Day/night inside mirror • Electric clock • Lockable glove box • Dual horns
- Cloth-covered molded headlining • Color-keyed vinyl inset body side molding • Body side accent tape stripes • Hood ornament and molding • Hood accent

tape stripe • Sedan door frame moldings • Vinyl roof (full on sedan models, Landau style on Coupe) • Deluxe sound insulation package.

Volaré Premier Wagon standard features: Deluxe pleated vinyl bench seats • Carpeted cargo compartment • Side storage bins with lockable doors • Cigarette lighter • Wood-grain body side applique

- Wood-grain liftgate applique • Deluxe door panel and rear deck trim • Belt molding • Upper door frame moldings • Hood ornament and hood center molding
- Rear seat armrests with ash receivers • Power steering on 8-cylinder models.

Standard Safety features: Keyless door-locking • Side marker lights and reflectors • Back-up lights • 2-speed electric windshield wipers • Electric windshield washers

- Dual-action safety hood latches • Parking lights that illuminate with headlights • Safety door latches and hinges • Laminated safety glass windshield • Safety-Rim wheels • Passenger restraint system with warning light and buzzer • Flame retardant interior material • Turn signals • Locking steering column • Energy-absorbing instrument panel, front seat-backs and armrests • Inside door locks • Cushioned sun visors with center supports • Dual braking system • Head restraints, 2 front • Locking latch on all folding front seat-backs
- Energy-absorbing steering column • Impact-absorbing bumper system • Side door beams.

(See Page 13 for additional safety information.)

and here's "The Clincher!"

For the first 12 months of use, any Chrysler Motors Corporation dealer will fix, without charge for parts or labor, any part of our 1976 passenger cars we supply (except tires) which proves defective in normal use, regardless of mileage.

The owner is responsible for normal maintenance service such as changing filters and wiper blades.

We'll even replace many of the expensive parts that could just wear out if you drive enough miles that first year. Even though they're not defective. Brake drums and linings, mufflers, shock absorbers, clutch and pressure plates, tailpipes, headlamps, disc brake discs and pads. All we expect of you is normal, routine maintenance, such as changing filters and wiper blades. If you make an appointment to come in for warranty repairs and the job can't be completed in one working day, participating dealers will supply you with a loaner. Free.

It's part of our new Owner Care Program. And it's going to take better care of you and all the people who buy our cars.

All product illustrations and specifications are based on authorized information. Although descriptions are believed correct at publication approval, accuracy cannot be guaranteed. Some of the equipment shown on product illustrations is optional, or extra cost. Chrysler Motors Corporation reserves the right to make changes from time to time, without notice or obligation. In prices, specifications, colors and materials, and to change or discontinue models.

Volaré Exterior Paint Colors: Silver Cloud Met. • Big Sky Blue • Jamaican Blue Met. • Spinnaker White • Formal Black • Volaré Standard Interior Colors: blue • red • green • parchment • tan. **Volaré Standard Interior Colors:** blue • red • green • parchment • tan.

