

DODGE '79

OMNI

OMNI
DOES
IT ALL.



***Omni 4-door.
The Omni that started it all.***



Omni with Premium Package.

Whoever thought a new kind of four-door car could turn so many people on? Ah, but this is no ordinary car that we're talking about . . . it's an Omni. And that makes all the difference in the world. Because Omni was designed to do a lot of things and do them well.

Like carry four full-sized adults. With lots of room for legs and arms, heads and hips, elbows and knees. With four doors to get them in and out with ease. And a very practical rear liftgate for getting to Omni's roomy storage area.

Need even more room for really big loads? Omni obliges with folding rear seats that give you a whopping 36.1 cubic feet of cargo area.

Whatever you plan to do in your Omni, you'll do it in comfort and style. The comfort of such standard interior features as all-vinyl front bucket seats. Cut-pile carpeting. AM radio. A handsome instrument panel with easy-to-read gauges and dials. Rear window defroster. Three-spoke steering wheel.

But what's comfort without style? Omni's got that, too. Crisp. Clean. Purposeful in design, yet handsome in line. Rectangular headlamps, bright trim, vinyl protective body-side moldings, and white sidewall tires are all standard.

To make even our lowest priced Omni a very dressy little Dodge!



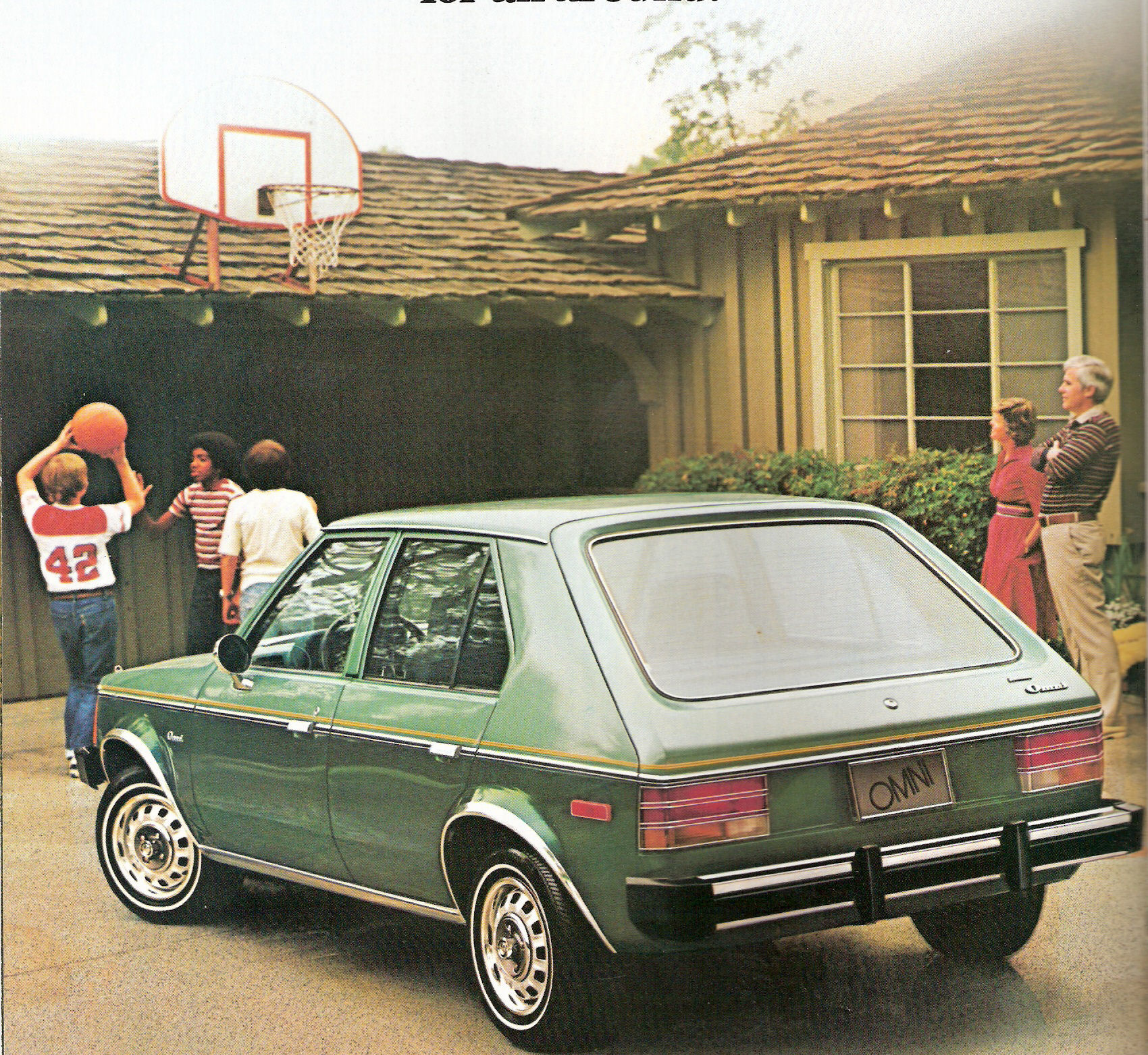
Getting a lot out of it by putting a lot into it.
Omni with Premium Wood-Grain Package.



Rain or snow, Omni shines.
Omni with Premium Package.

Some items pictured on vehicles in this catalog are extra-cost options.

***Omni. The all-around car
for all around.***



Omni with Custom Package.

Maybe you're an around-the-town driver. Most of your trips are short hops. Around the corner or around the block. City stuff. Well . . . Omni's just right for you. Easy to drive. Easy to park. Easy to take. Omni's combination of a peppy four-cylinder engine, sporty four-speed manual transmission, precision rack-and-pinion steering, and front disc brakes makes even trips to the grocery store fun.

Zip down the street. Pop into a tight parking space. And load up on the goods. Omni will take them all in stride. Because Omni's built as

much for hauling cargo as for carrying people. So it does both admirably. With a minimum of fuss, coming or going.

Omni's full-coil suspension with front anti-sway bar and rear anti-sway feature keeps the ride under control. While front-wheel drive helps keep Omni stable on wet pavement or in crosswinds.

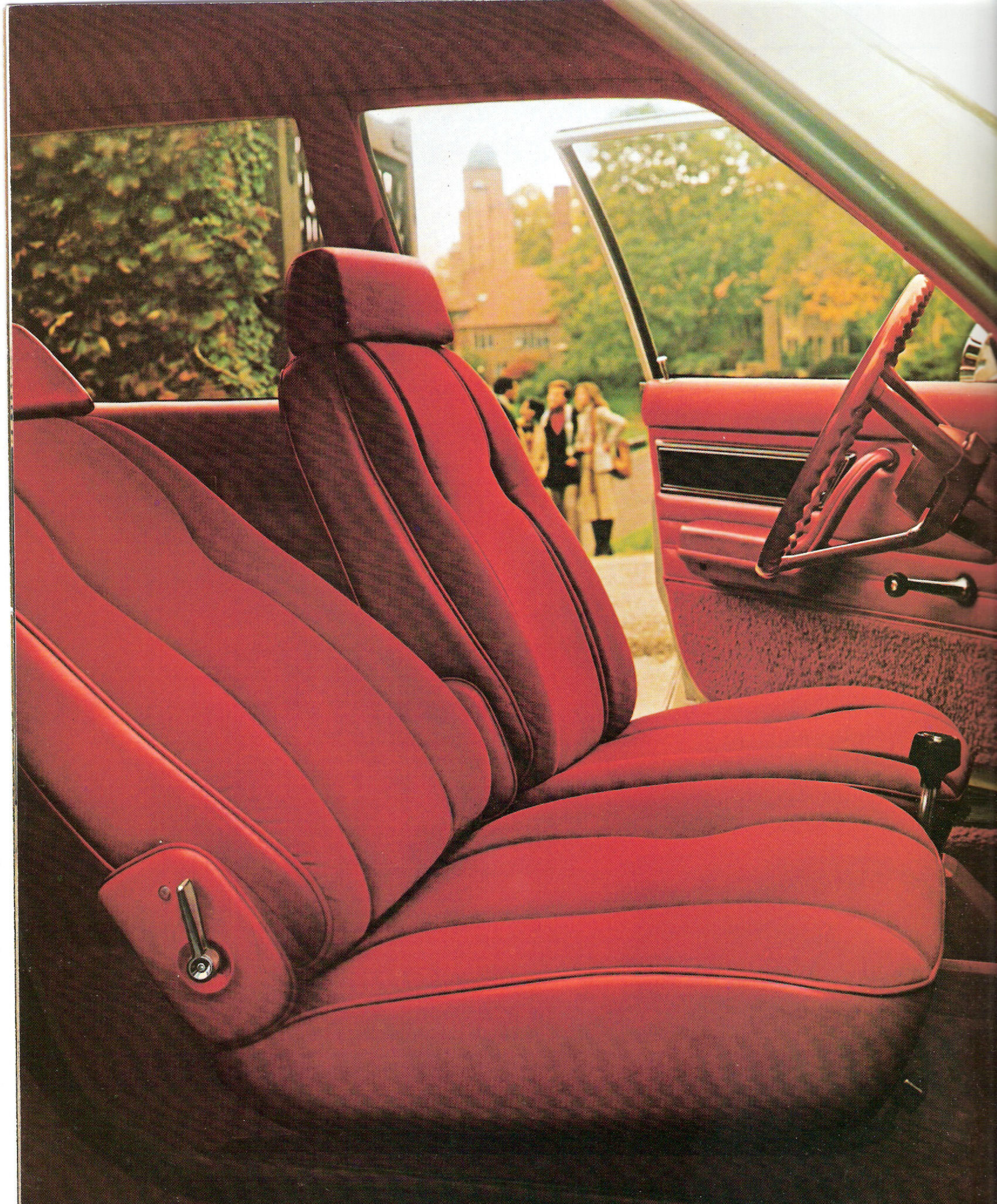
Quite an accomplishment, that. But then, so is Omni. Whether you're planning on driving it down the block or across the country, it's good to know that Omni can indeed do it all.



A little Omni and a lot of gear go a long way.
Omni with Custom Package and optional "Omni" tape striping.



All for one and one for all.
Base Omni with optional bumper guards and Premium Interior.



Omni's Premium cloth-and-vinyl buckets.

Omni. The great indoors.

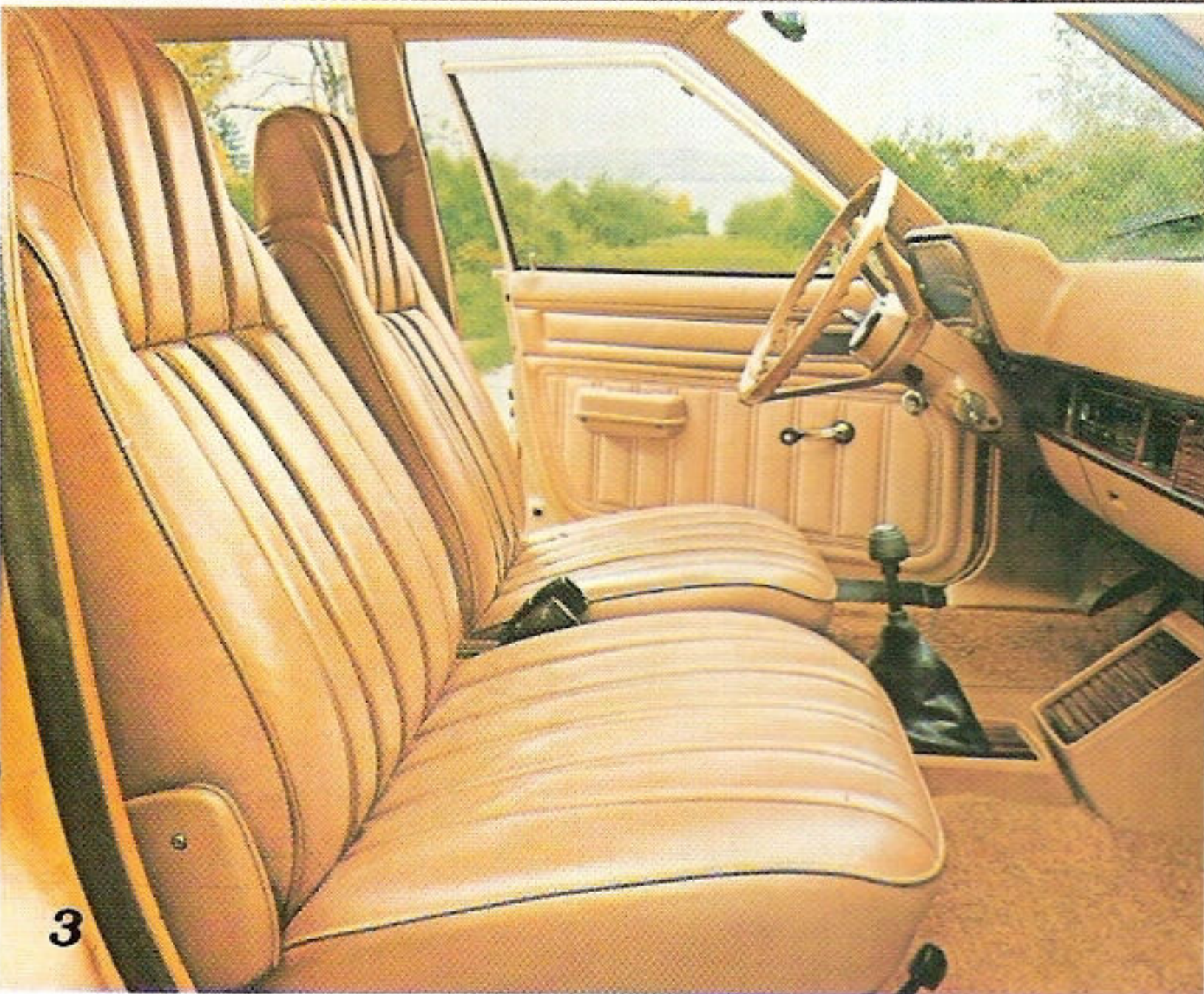
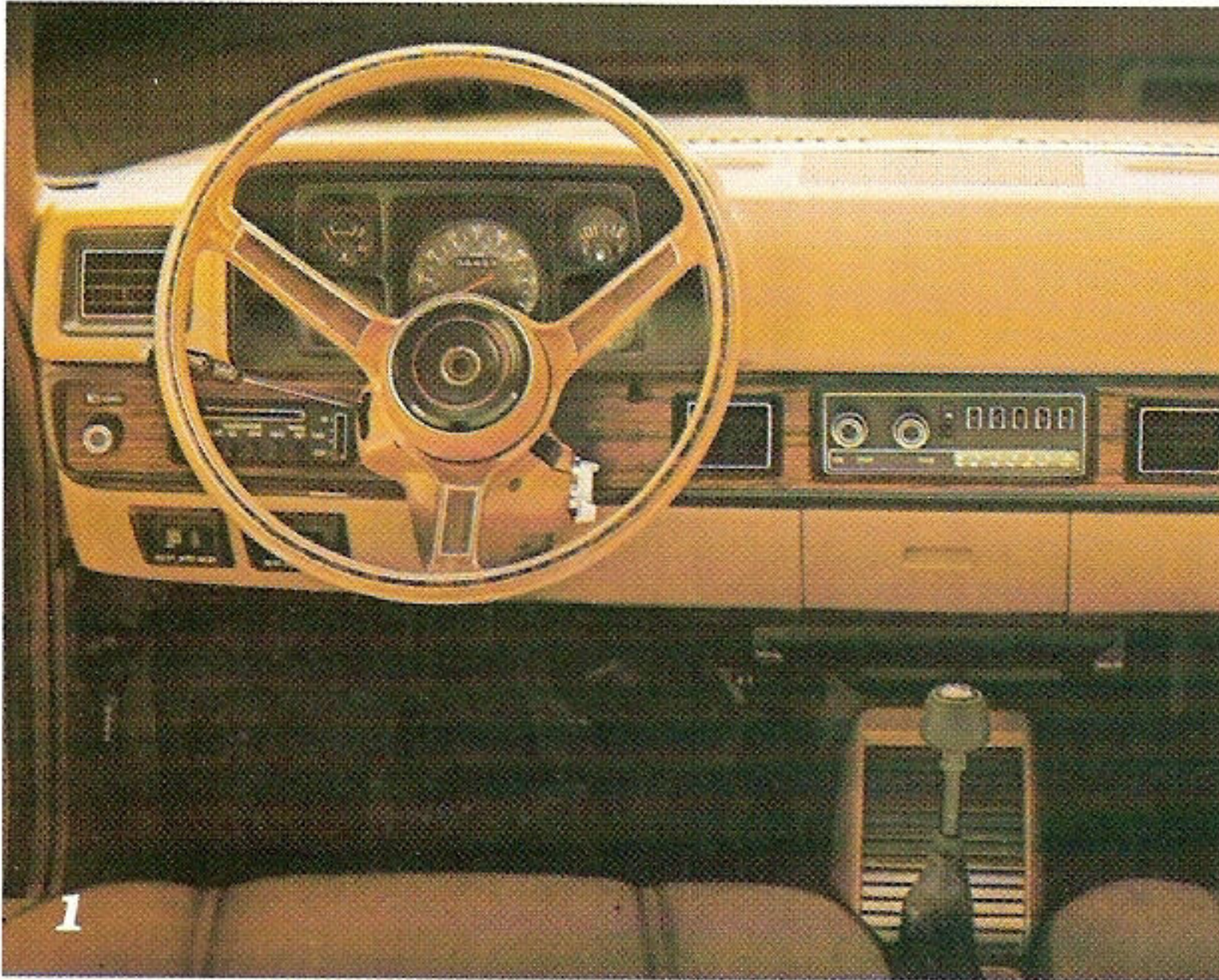
Welcome to the Inner Omni. A place of sensible design. Very roomy. Very intelligent. Very much attuned to the comforts we Americans expect in our cars . . . especially our four-doors.

First, there's Omni's instrument panel, with gauges set in a neat, easy-to-read design (PICTURE 1). Next, we see the handsome high-back front bucket seats of all-vinyl that come standard on the basic Omni (PICTURE 2). Like yours a little plusher? Then go with Omni's optional Custom Package and get custom vinyl high-back buckets (PICTURE 3). Or, if you're into cloth, relax . . . in Omni's optional cloth-and-vinyl custom seats (PICTURE 4). But don't get too comfortable just yet. Because you're going to be

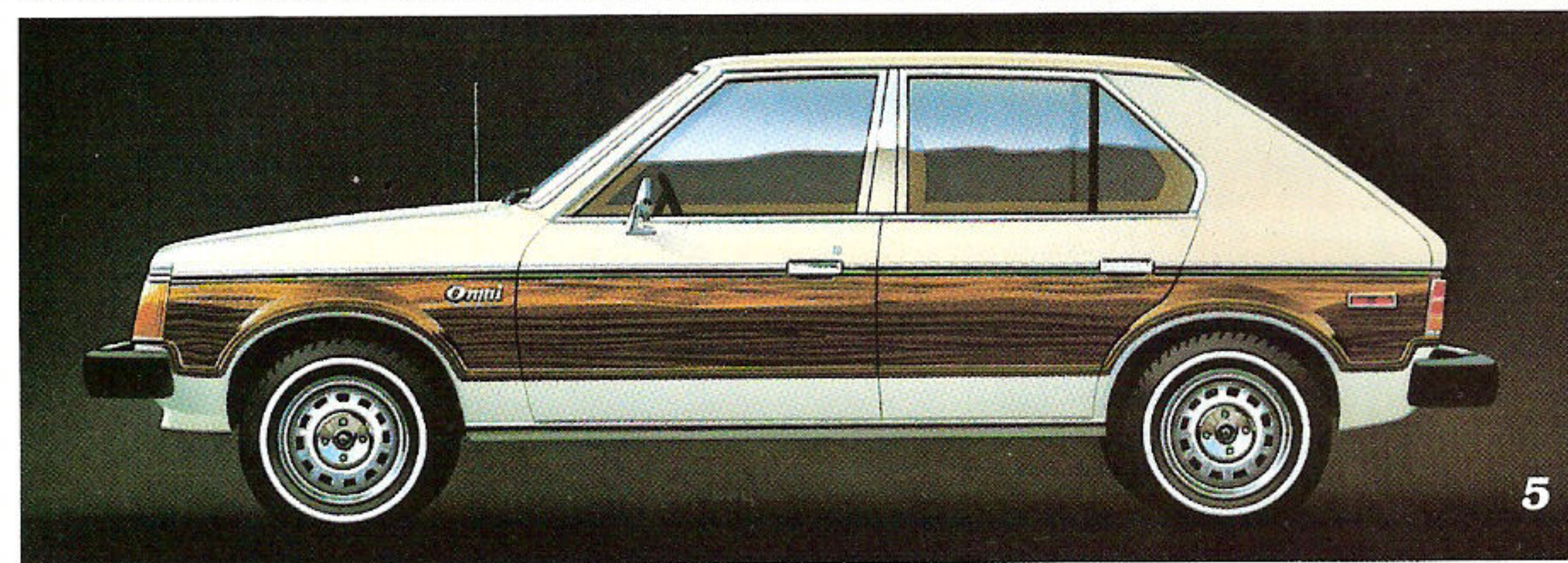
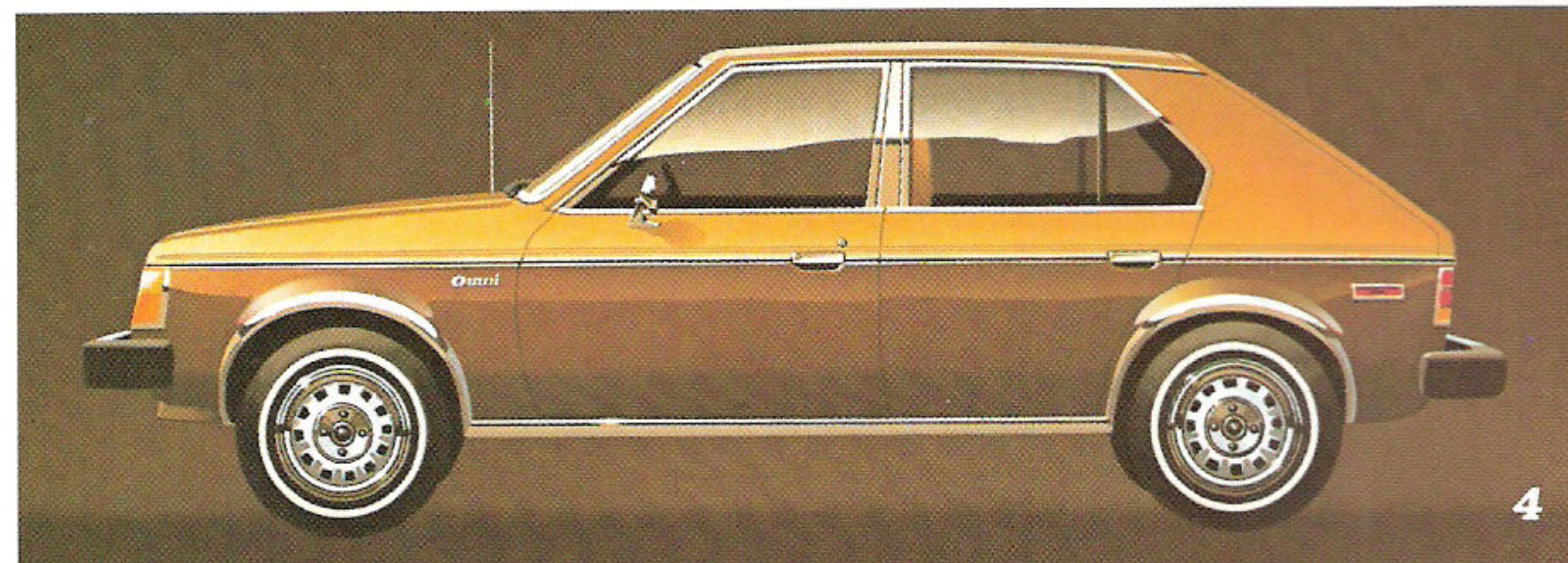
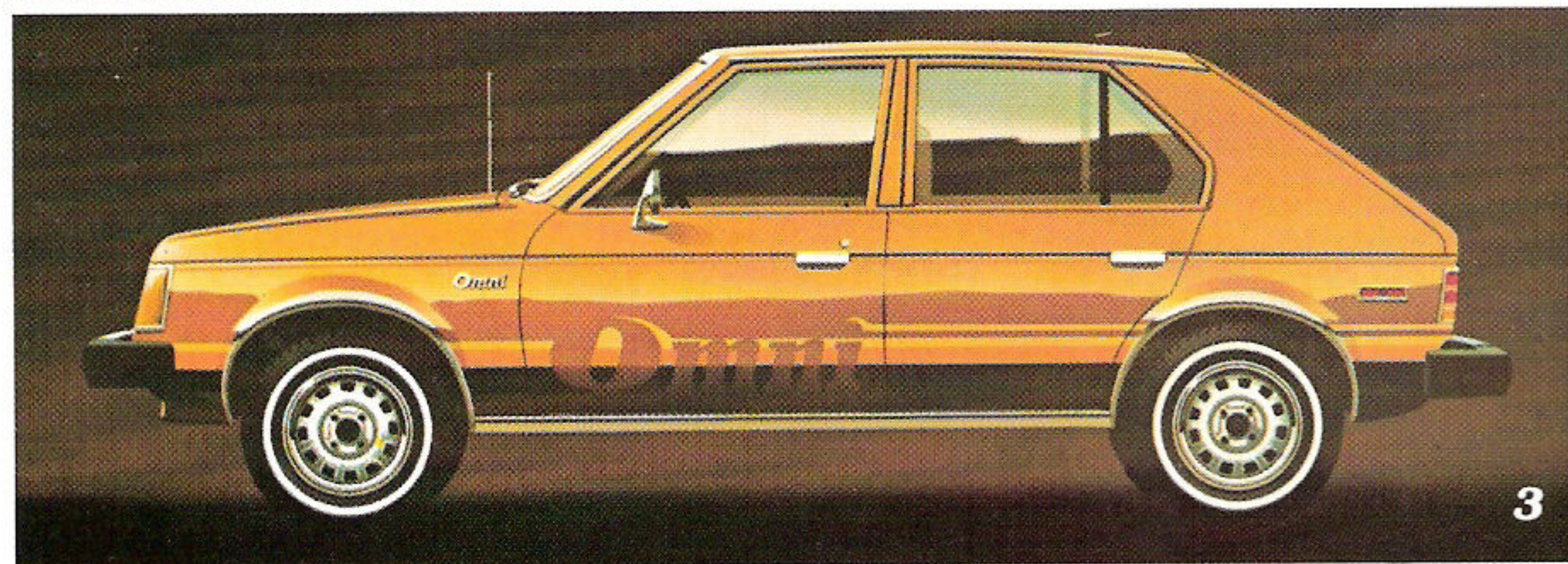
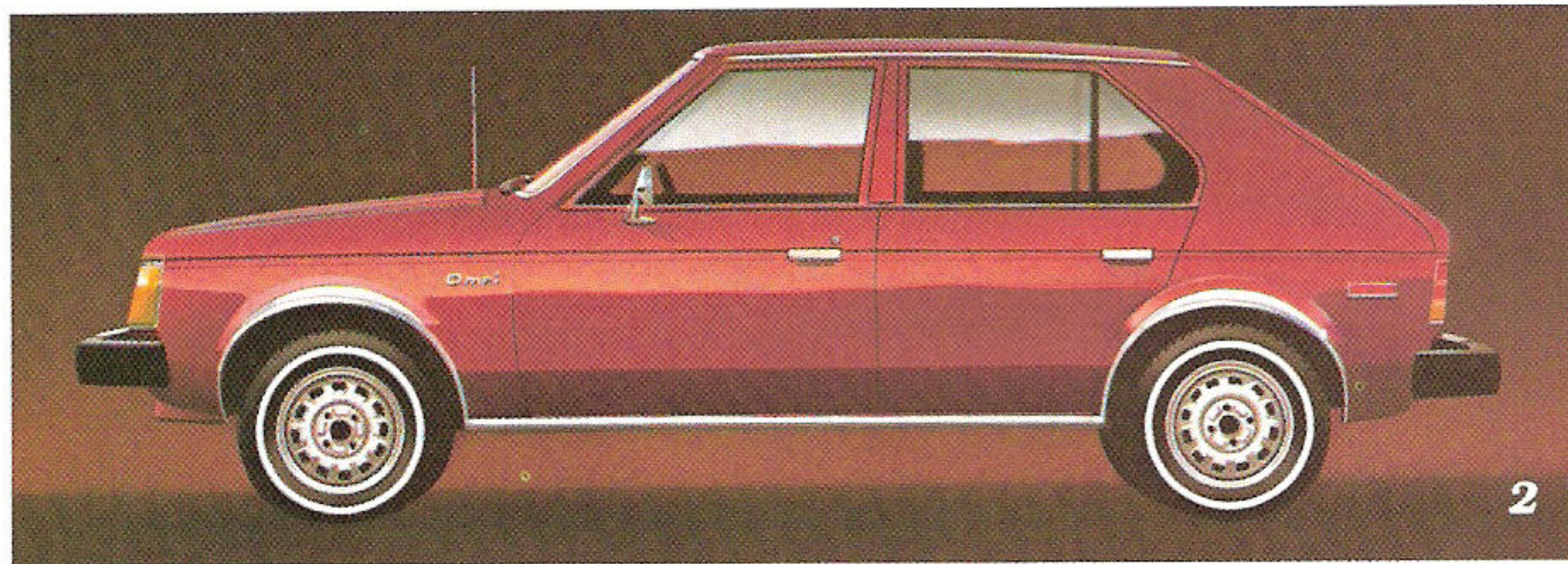
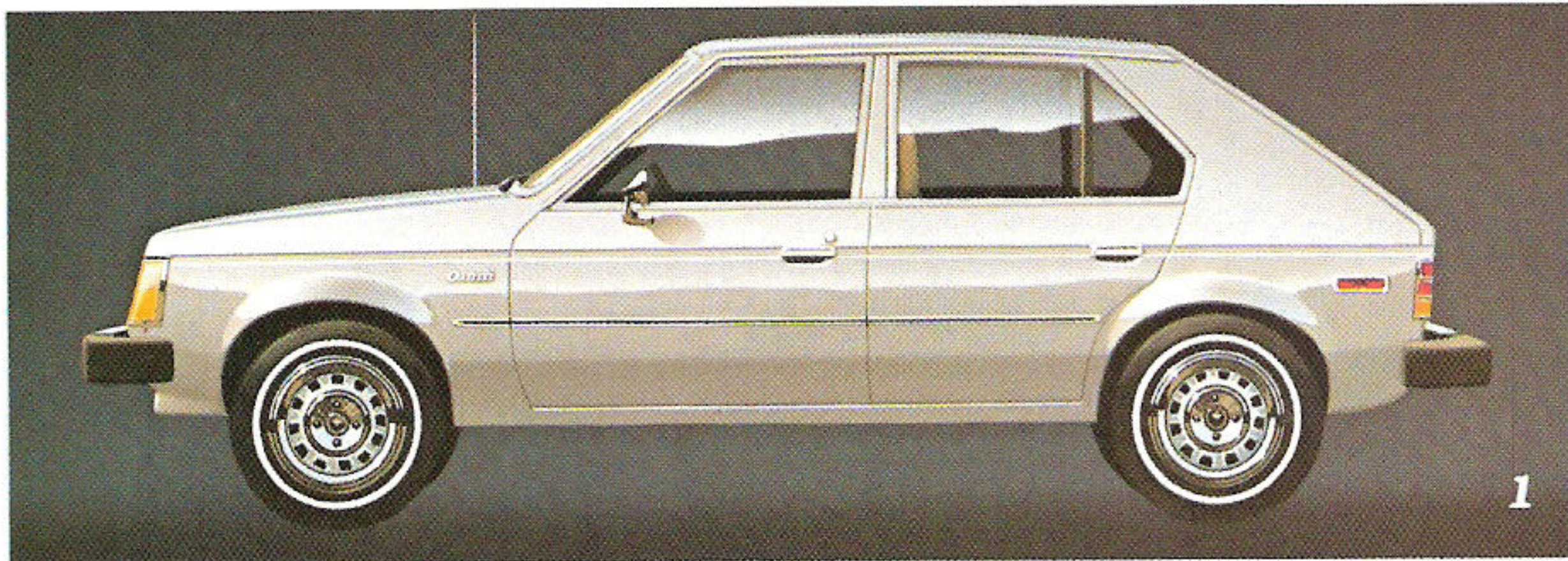
moved by the rich cloth-and-vinyl seats of the Premium Package (OPPOSITE PAGE). A passenger seat-back that reclines. Headrests that adjust. Rich-looking door trim panels with lower door carpeting.

And now we proudly present Omni's rear seat/cargo area (PICTURE 5). With the seat up, there's room for two adults *plus* 10.5 cubic feet of concealed cargo area. Raise the shelf and fold down the seat and you get 36.1 cubic feet of cargo area (PICTURE 6)!

To complete your interior, order the optional color-keyed seat belts and accessory floor mats. And the optional cargo compartment carpet and sound insulation.



Omni times five.



1.

The Basic Omni is a good basis for a new car because "Basic" in this case means a lot more than you'll find in most other basic models. Like a bright grille; bright front and rear bumpers with rub strips; bright moldings around the windshield, rear liftgate window, headlamps, and taillamps; black vinyl body-side moldings, and white sidewall radial-ply tires.

Inside, there's an attractive, roomy interior featuring comfortable high-back front bucket seats upholstered in all-vinyl. With handsome matching door trim panels and color-keyed cut-pile carpeting in the passenger compartment. The folding rear seat and rear shelf security panel are standard, too. As are AM radio, rear window defroster, cigarette lighter, and inside hood release. So you get more Omni for your money. Even when it's the very least you can spend for one.

2.

In the mood for a little interior and exterior decorating? Then order the Omni Custom Interior and Exterior Packages.

Custom Interior Package:

Wood-grain applique on instrument panel, glove box lock, custom door trim panels, custom seats with integral head restraints, knit-cloth-covered headlining, standard all-vinyl buckets (optional cloth-and-vinyl bucket seats). Not available with Premium Interior Package.

Custom Exterior Package:

Hood and fender moldings*, bright wheel opening moldings, bright sill moldings, bright drip trough molding. Not available with Premium Exterior Package or Wood-Grain Exterior Package.

3.

Omni Custom Exterior Package with optional "Omni" Sport tape. Available in Light Blue/Bright Blue/Black or Yellow/Pumpkin/Black. An expression of real style.

Standard Equipment.

4.

For unabashed lovers of luxury, we proudly present the Omni Premium Interior and Exterior Packages.

Premium Interior Package:

Wood-grain applique on instrument panel, glove box lock, luxury steering wheel with wood-grain trim, passenger side visor vanity mirror, premium door trim panels with lower door carpeting and premium front armrests, knit-cloth-covered headlining, premium bucket seats with adjustable head restraints and passenger-side recliners. Not available with Custom Interior Package.

Premium Exterior Package:

Bright hood and fender moldings*, drip trough moldings, wheel-opening moldings, sill moldings, upper door frame moldings, center pillar moldings, belt moldings, full length body-side moldings*, liftgate moldings*, deluxe wheel covers. (Not available with Custom Exterior Package, Premium Wood-Grain Package or Wheel Trim Rings.)

5.

People everywhere think Omni's shape and style are pretty darn distinctive. Still we had to try our best to make Omni even more distinctive for those who demand something extra special. We think we've succeeded with this rather remarkable Premium Wood-Grain Package treatment.

Premium Wood-Grain Package:

Bright hood and fender moldings*, body-side and liftgate moldings*, simulated wood-grain on body-side and lower rear liftgate panel*, drip trough moldings, sill moldings, upper door frame moldings, center pillar moldings, belt moldings, deluxe wheel covers. (Not available with Custom Exterior, Premium Exterior or Classic Two-Tone Paint Packages)

Other Packages

Light Package*:

Map/courtesy light • Glove box light • Ash receiver light • Luggage compartment light • Ignition switch light with time delay • Headlight-on buzzer • Fender-mounted turn signal indicators.

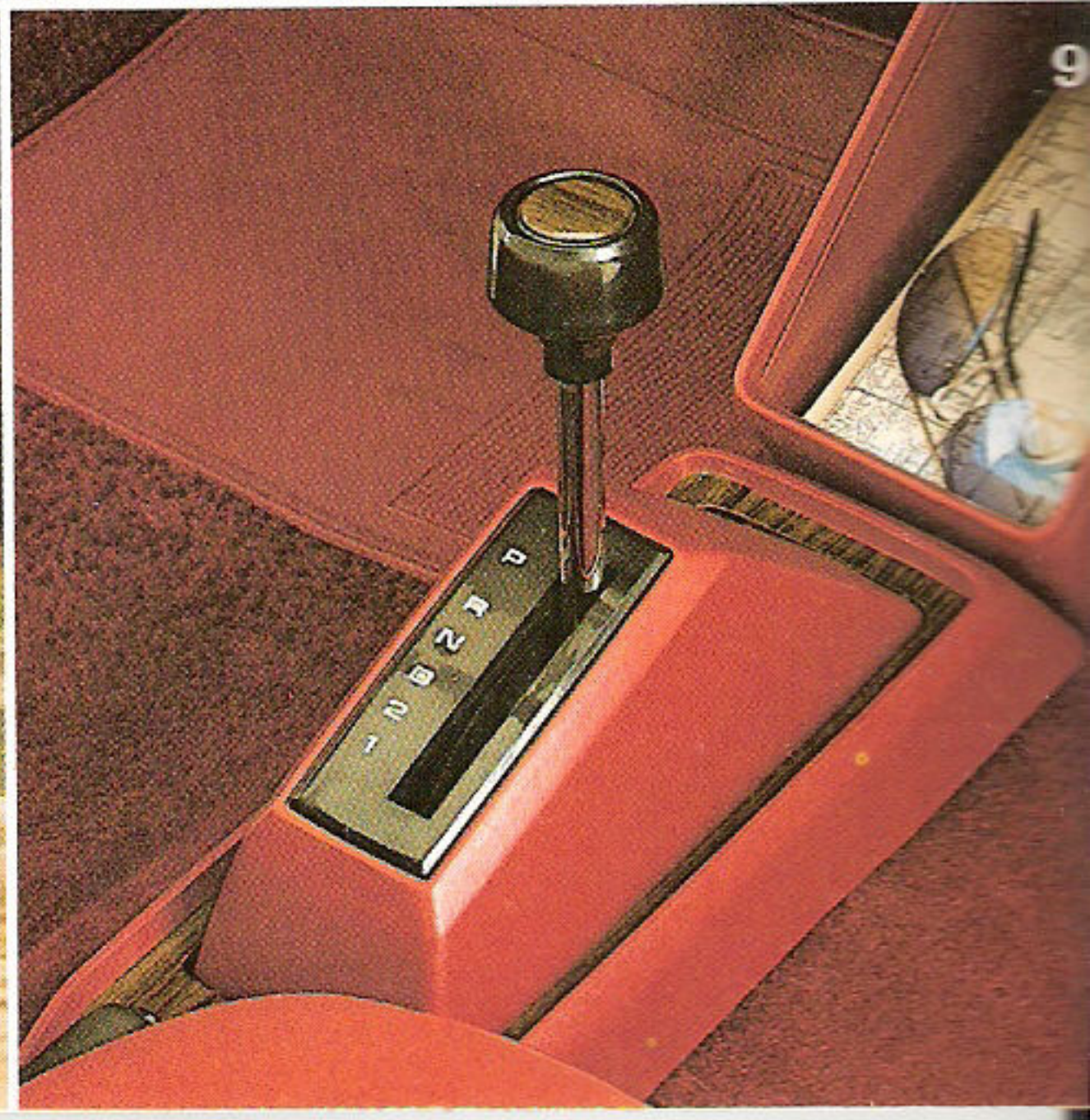
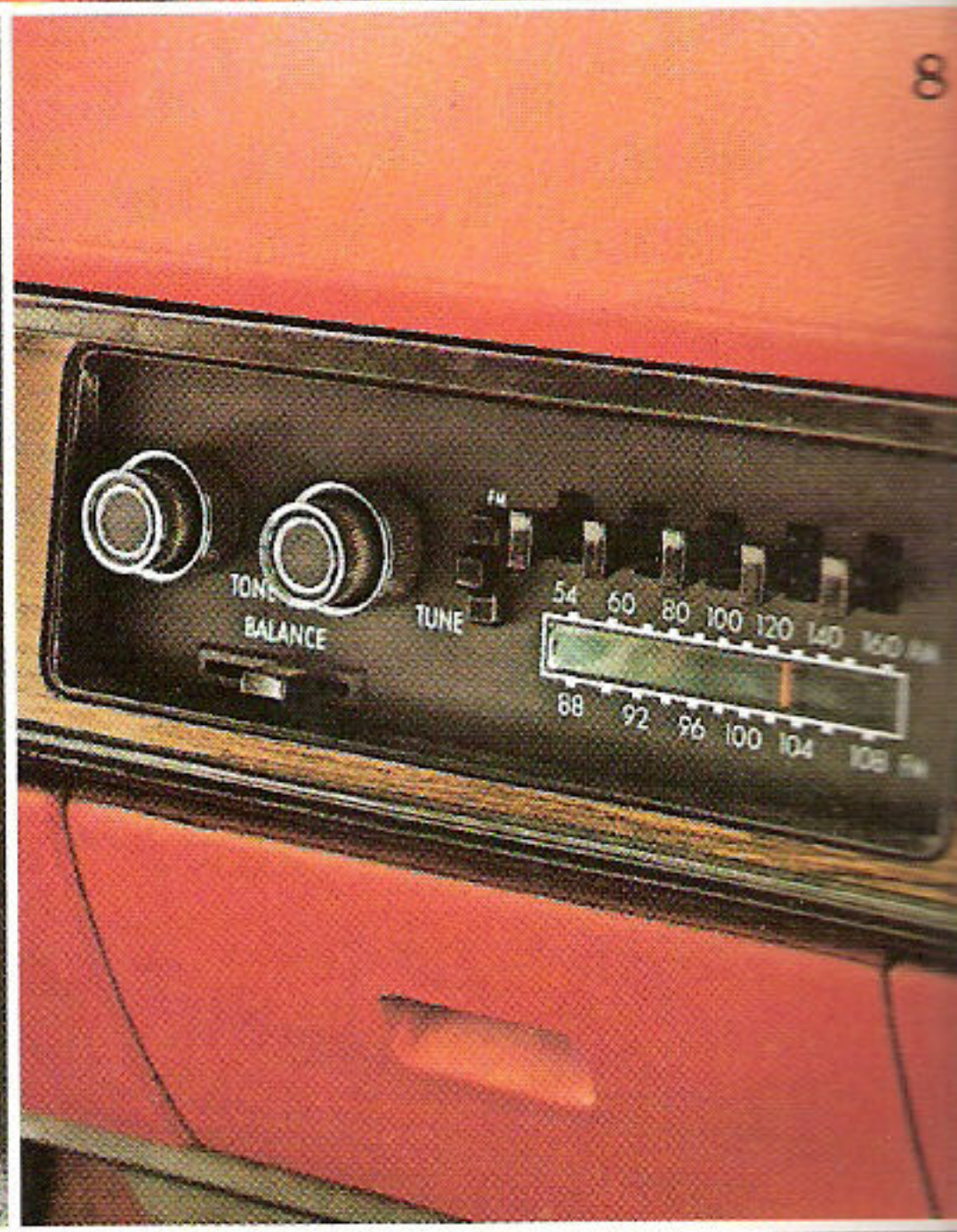
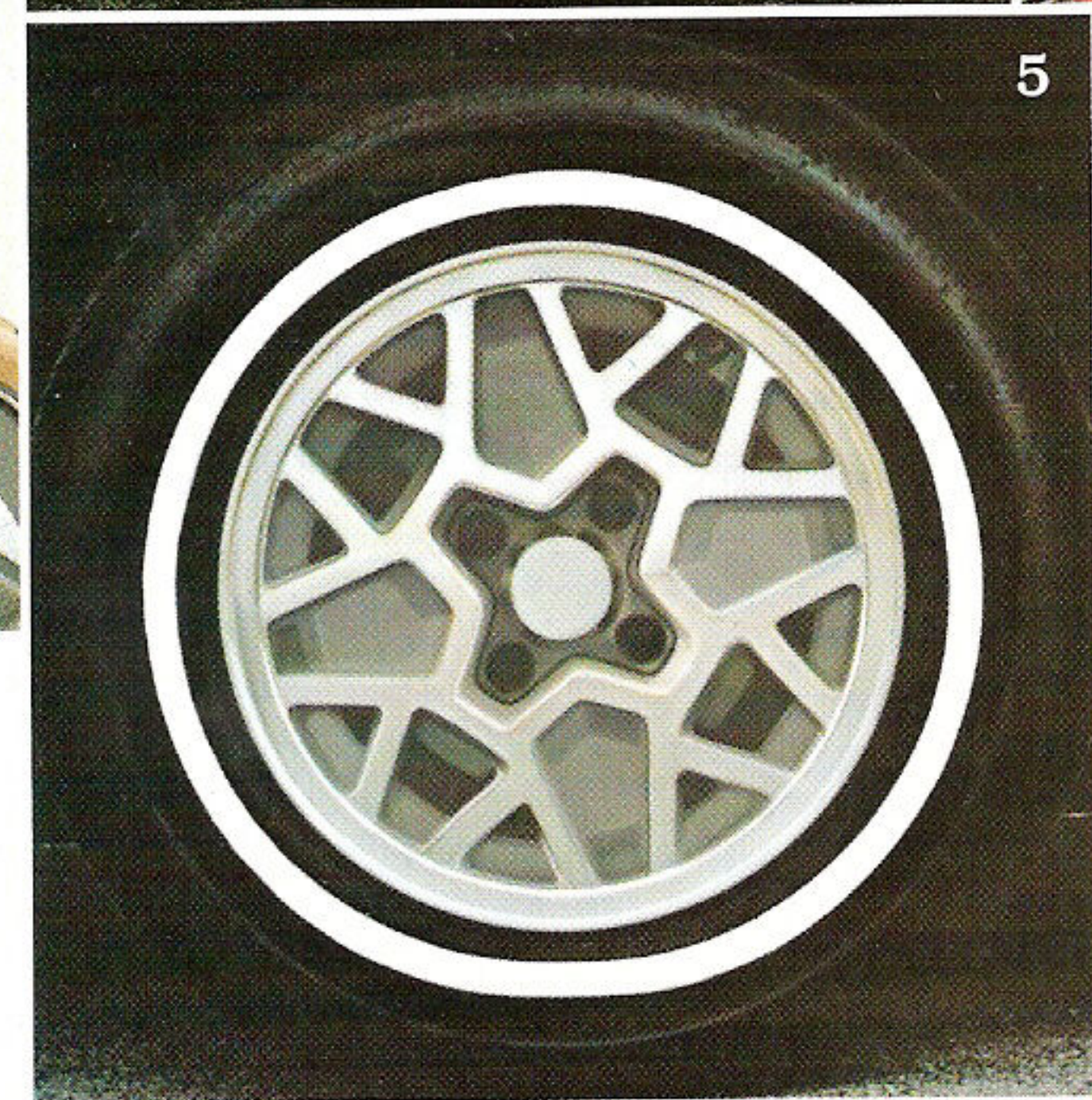
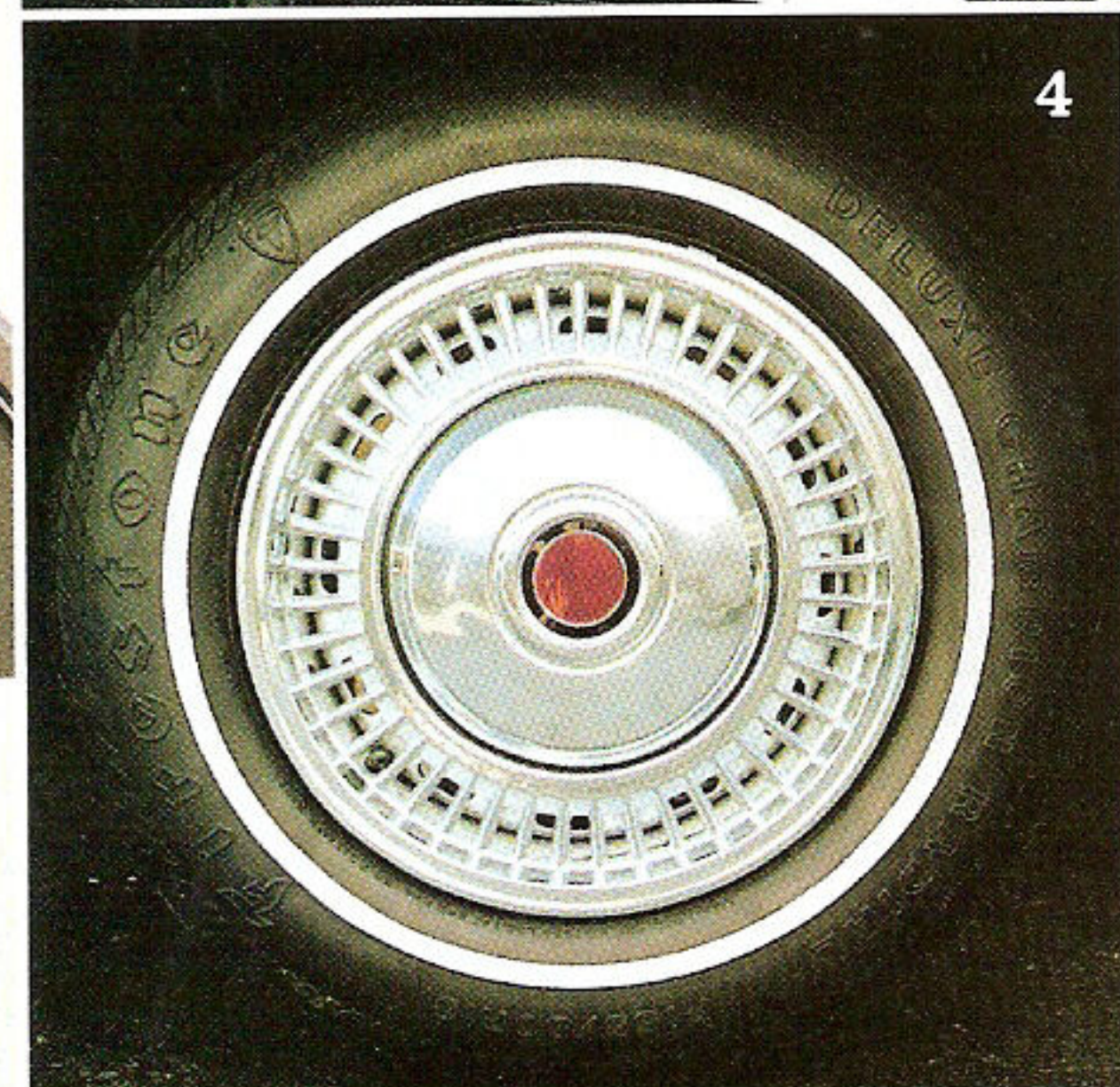
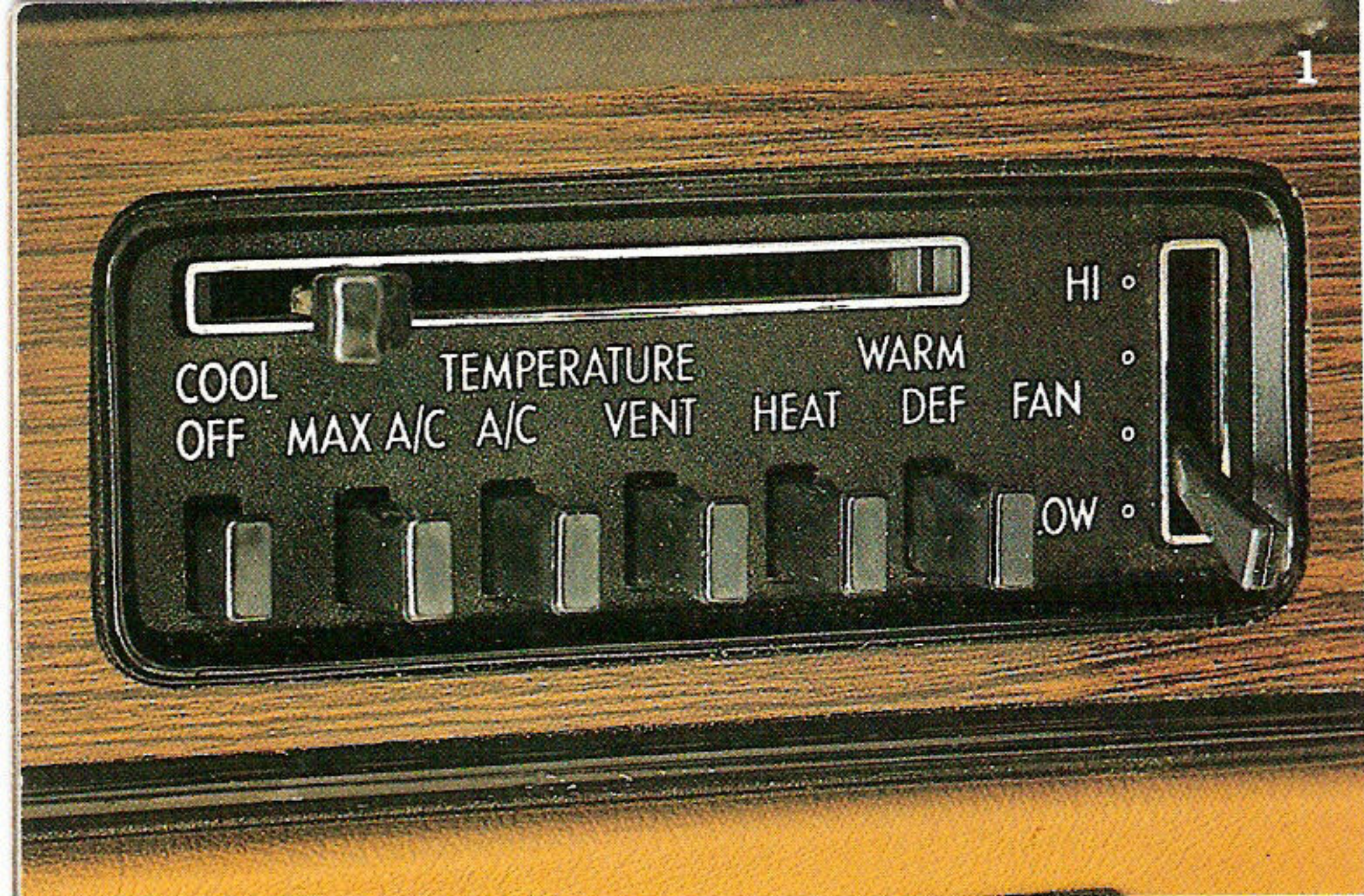
Popular Equipment Group:

Light package • Remote-control mirror left • Dual horns • Power steering • Day/night inside mirror • Wheel trim rings.

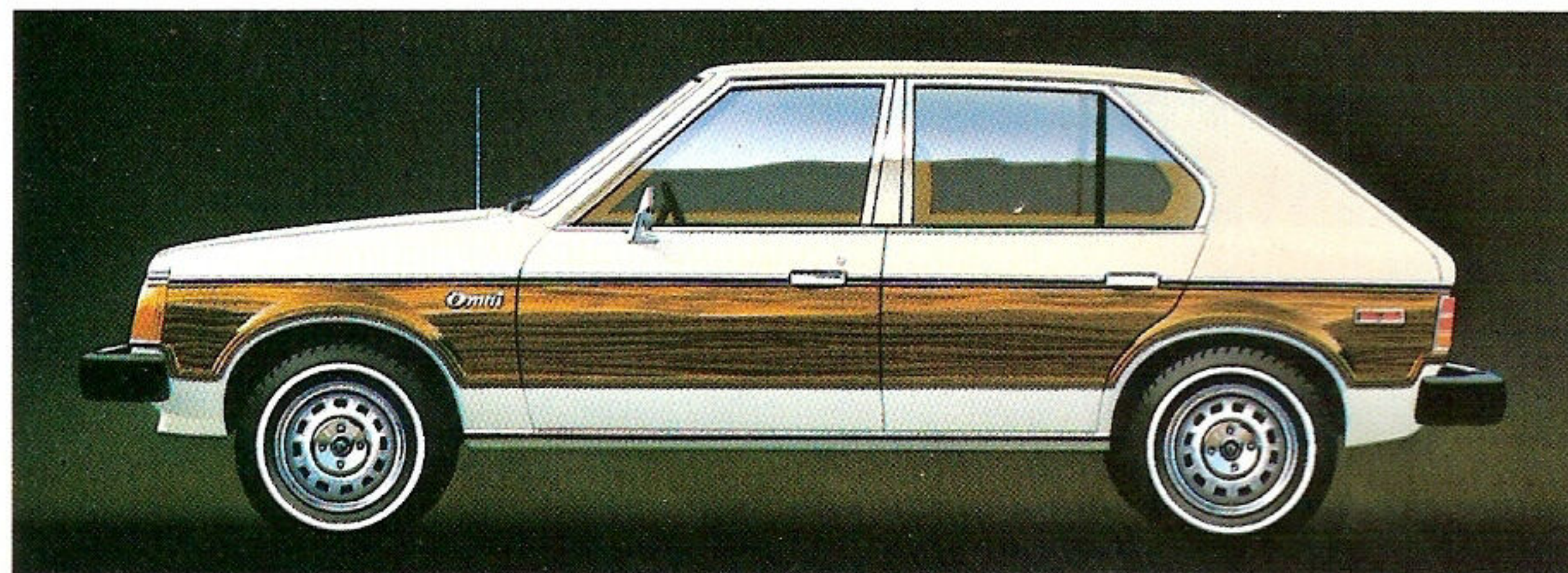
- Alternator, 65 amp.
 - Ash receiver
 - Battery, 310 amp.
 - Bench seat, rear with fold-down back feature
 - Brakes, front disc, rear drum
 - Bucket seats, high-back with full-volume foam, vinyl-covered
 - Bumper protection rub strips—front and rear
 - Carpeting, cut-pile
 - Cigarette lighter
 - Cleaner air system
 - Coat hooks
 - Defroster, electric rear window
 - Directional signals with lane-change feature
 - Door trim panels with front and rear armrests
 - Engine, 104.7 CID 4-cylinder (California requires optional Emissions Control and Testing)
 - Electrical system diagnostic plug
 - Electronic ignition system and voltage regulator
 - Flasher, hazard warning
 - Fuel tank capacity, 13 gallons (49L)
 - Front-wheel drive
 - Galvanized steel for added corrosion resistance
 - Gauges, alternator and fuel; warning lights for engine temperature, oil pressure, and parking brake
 - Headliner, molded
 - Head restraints—right and left
 - Heater and defroster
 - Hood release, inside
 - Horn, single
 - Instrument panel safety padding
 - Liftgate access for easy-storage
- #### **Lights**
- Headlight switch and wiper switch
 - Back-up
 - Dome switch
 - Driver's door and right front door
 - Side marker and reflectors
 - Select lever quadrant (with optional automatic transmission)
 - Mirror, inside rear-view/non-prismatic
 - Mirror, outside, left, manual chrome
 - Radio, AM
 - Road wheels, Argent styled sport
 - Security shelf panel, rear folding
- Steering column with multifunction control stalk
 - Steering, rack-and-pinion
 - Steering wheel—3-spoke with horn button
 - Sun visors
 - Suspension, "Iso-Strut" coil spring front with anti-sway bar; rear: independent trailing arm with integral anti-sway control
- #### **Tires**
- P155/80R x 13" glass-belted radial, white sidewall
 - Transmission, 4-speed manual, fully synchronized
 - Trunk, vinyl mats
 - Uni-belt restraint system
 - Ventilation, upper-level
 - Wheels, steel 13"
 - Windshield wipers and washers, two-speed
- #### **Standard Safety Features**
- Unibelt restraint system • Hazard warning flasher • Turn signals with lane-change feature • Side marker lights and reflectors • Back-up lights • Disc brakes • Dual braking system with warning lights • Dual throttle return springs • Circuit breakers for wipers and headlamps • Electric windshield wipers and washers • Energy absorbing steering wheel • High-penetration-resistant windshield • Padded instrument panel, sun visors, and top on front seat-back • Double ball joint mounted rearview mirror with soft rim • Side door guard beams • Folding seat back latches • Interlocking door latches • Dual hood latch system • Front-seat head restraints • Lock buttons override inside door release lever (except driver's door. Optional with color-keyed seat belt option only) • Fire-retardant interior trim materials • Left outside rearview mirror • Safety-rim wheels.

Omni uses 170 pounds of high strength steel. This extensive use results in less weight for improved fuel economy.

*—Available in package only.



Ready-To-Order Form.



(Refer to pages 8 & 9)

- Std. Omni
- Omni with Custom Exterior Package
- Omni with Sport Stripe
- Omni with Premium Exterior Package
- Omni with Premium Wood-Grain Package

Engines

- 104.7 CID (1.7 L) 4-cylinder (standard)
- 104.7 CID (1.7 L) 4-cylinder with California required Emissions System

Transmissions

- 4-speed manual, fully synchronized (standard)
- Automatic (optional)

Interior Packages

(Refer to pages 6, 7, 8, & 9)

- Omni with Custom Interior Package
- Omni with Premium Interior Package

Other Packages (Refer to pages 8 & 9)

- Light Package
- Popular Equipment Group
- Classic Two-Tone Paint Package

Omni Options

1. Air conditioning for warm to hot weather comfort.
2. Multipurpose carry-all roof rack can be adapted for carrying skis, baggage (2A) or bikes (2B). To help you take full advantage of the rack's aerodynamic design, the cross bars can be removed easily.
3. Rear window wiper/washer helps whip snow, rain, and mist year round.
4. Deluxe wheel covers.
5. Cast aluminum road wheels add that sporty touch.
6. Power front disc/rear drum braking system for easy stopping.
7. Remote-control outside rearview mirrors for that extra measure of security and convenience.
8. AM/FM push-button stereo radio for easy listening.
9. TorqueFlite automatic transmission. (Shown with optional roll-top front storage module.)

The Complete List of Options

- Air conditioning (tinted glass recommended)
- Battery—430 amp. Maintenance-Free (recommended for extreme cold areas)
- Brakes, power front disc
- Bumper guards—front and rear
- Cargo Dress-Up and Sound Package
- Clock, electric and trip odometer

Consoles

- Front storage
- Shift lever console (includes auxiliary storage and rear ashtray)
- Emissions Control and Testing (required on all vehicles registered in California)
- Gas cap, locking

Glass

- Tinted—all windows (recommended with air conditioning)
- Tinted—windshield
- Clear—all windows (Use with air conditioning if tinted glass not desired)
- Glove box, locking (Included in Custom and Premium Packages)
- Horns, dual (Included in Popular Equipment Group)
- Luggage rack, roof
- Mats, accessory floor—color-keyed (front mats have carpet inserts)

Mirrors

- Day/night, inside (Included in Popular Equipment Group)
- Remote control—left (Included in Popular Equipment Group)
- Remote control—left and right

Moldings

- Upper door frame (Included in Premium and Premium Wood-Grain Packages)
- Drip rail (Included in Custom, Premium and Premium Wood-Grain Packages)
- Belt, bright (Included in Premium and Premium Wood-Grain Packages)
- Sill (Included in Custom, Premium and Premium Wood-Grain Packages)
- Wheel lip (Included in Custom and Premium Packages)
- Door-edge protectors

Radios

- AM/FM
- AM/FM stereo (includes speaker in left and right front door)
- Seat belts, color-keyed with automatic tension reliever release
- Heavy-duty suspension with heavy-duty springs, front and rear and heavy-duty shock absorbers
- Steering wheel, luxury (Included in Premium Interior Package)
- Steering, power (Included in Popular Equipment Group)
- Tri-Lite tilt-up removable glass roof panel
- Spare tire, conventional
- Transmission, TorqueFlite automatic
- Undercoating

Wheel Dress-Up

- Cast aluminum road wheels
- Wheel covers—deluxe (Included in Premium and Premium Wood-Grain Packages)
- Trim rings (Included in Popular Equipment Group)
- Bright rallye hubs with bright lug nuts and argent-colored wheels
- Rallye wheel, body-colored and argent—includes bright hub, lug nuts, and trim rings
- Wiper/washer—rear window

Specifications.

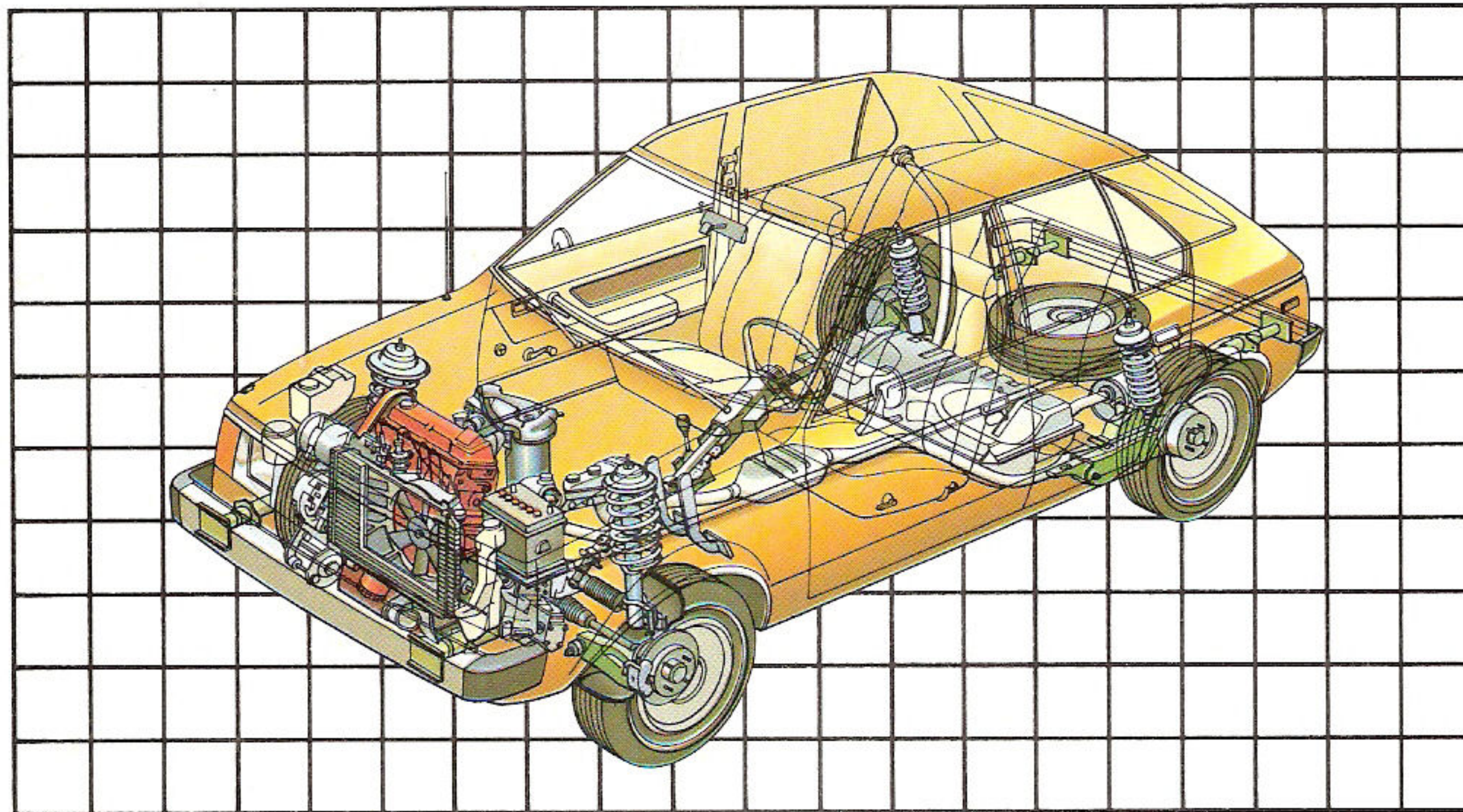
Standard Specifications

| | |
|-------------------|--|
| Engine | 104.7 CID (1.7L) 2-bbl. 4-cylinder |
| Transmission | 4-speed manual, fully synchronized |
| Suspension | Front: Iso-Strut independent with sway bar. Rear: Independent trailing arm with integral anti-sway feature. |
| Brakes | Front, disc; Rear, drum |
| Electrical System | Battery, 310 amp; alternator, 65 amp; Electronic Ignition System |

Engine and Drive Train Availability

| Engine | Transmission (All States except California) | Std. Gear Ratio |
|-----------------------------|--|---------------------------|
| 104.7 CID (1.7L) 4-cylinder | 4-speed manual floor shift TorqueFlite automatic (optional) | 3.3 3.4 (3.6 optional) |
| California (N95 required*) | Also available in states other than California | |
| 104.7 (1.7L) 4-cylinder | 4-speed manual floor shift TorqueFlite automatic (optional) | 3.5 3.6 |

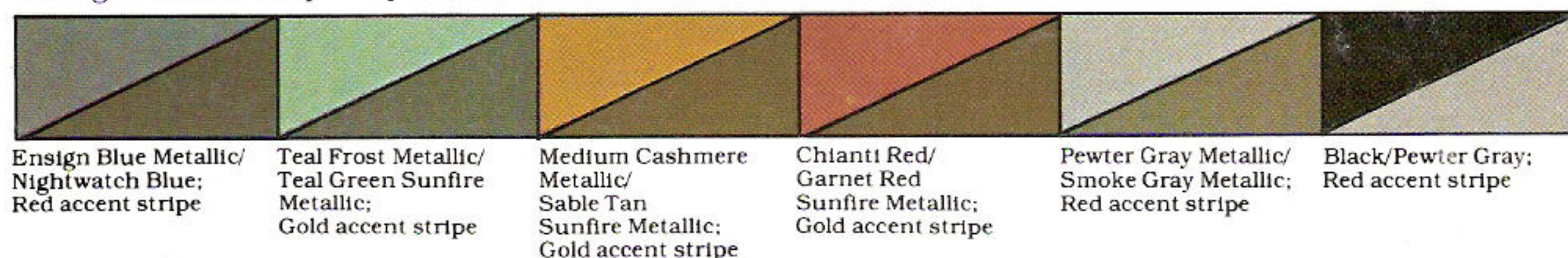
*Required Emissions Control System and Testing



Colors



Classic Two-Tone Paint Package and Accent Tape Top/Bottom



NOTE: Due to occasional printing irregularities, the colors shown may vary from actual hues. See your Dodge Dealer for accurate color chips.

Dimensions

| | 4-door Hatchback |
|-----------------------------|------------------|
| Wheelbase | 99.2" |
| Overall length | 164.8"* |
| Overall width | 66.2" |
| Overall height | 53.7" |
| Track—front | 56.0" |
| —rear | 55.6" |
| Headroom—front | 38.3" |
| —rear | 37.4" |
| Legroom—front | 42.0" |
| —rear | 33.0" |
| Hiproom—front | 52.6" |
| —rear | 52.4" |
| Shoulder-room—front | 51.7" |
| —rear | 51.5" |
| Luggage capacity | |
| —with rear seat-back raised | 10.5 cu. ft. |
| Cargo capacity | |
| —with rear seat-back folded | 36.1 cu. ft. |

*Includes optional bumper guards.

Optional Tires

P165/75R13" (Glass-belted radial) WSW⁽¹⁾
 P165/75R13" (Steel-belted radial) WSW
 P175/75R13" (Steel-belted radial) WSW

¹Minimum Size Required with optional air conditioning and Emissions Control System and Testing or optional air conditioning and luggage rack

NOTE: The Omni 4-door hatchback is recommended for towing trailers up to 1,000 lbs. in total loaded weight and having less than 30 sq. ft. of frontal area. The automatic transmission option is recommended for trailer-towing use.

All product illustrations and specifications are based on authorized information. Although descriptions are believed correct at publication approval, accuracy cannot be guaranteed. Some of the equipment shown on product illustrations is optional, at extra cost. Chrysler Corporation reserves the right to make changes from time to time, without notice or obligation, in prices, specifications, colors and materials, and to change or discontinue models.

Litho in U.S.A. 8/78 (500M) Form No. 81-307-9021



A PRODUCT OF CHRYSLER CORPORATION

Buy or lease an Omni and say "Hey that's my Dodge!"