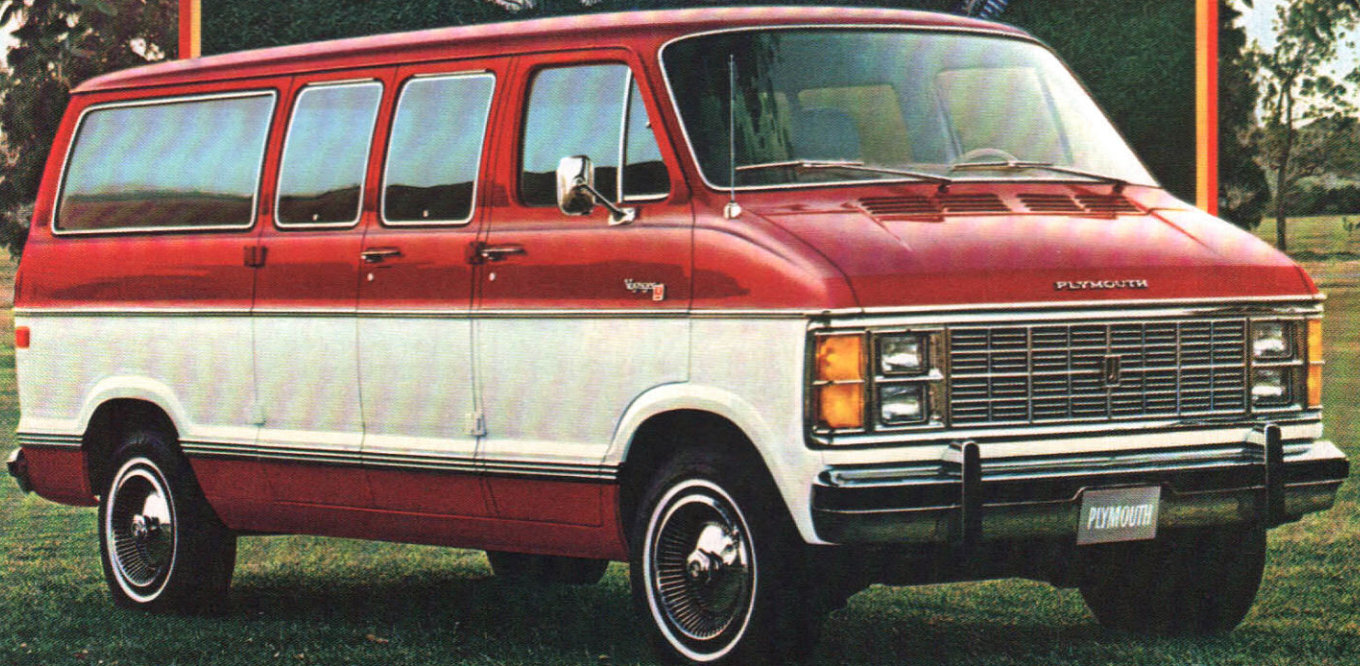


1979 PLYMOUTH

# VOYAGER

PLYMOUTH'S MOST VERSATILE WAGONS





**Plymouth Voyager.  
Making room for the  
future of family travel.**



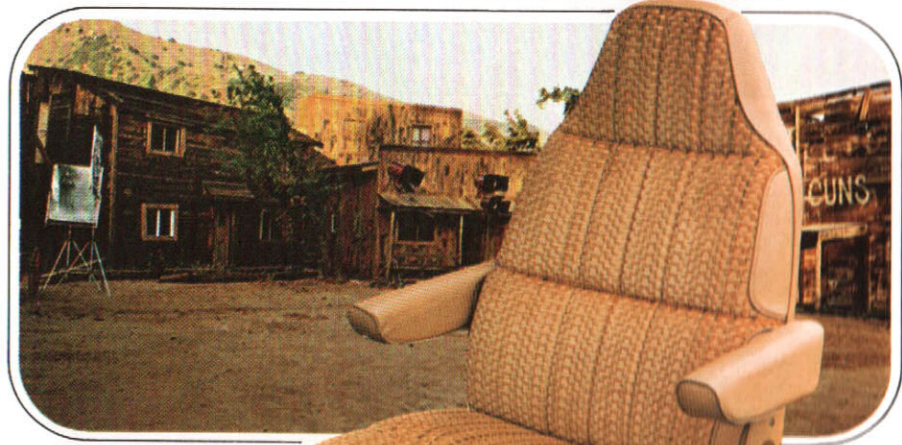
Enjoyable family travel calls for space; room to haul the gang and all their gear across town or across country, with a minimum of crowding. And it also calls for handling ease, riding smoothness . . . all-around performance that does good things for a family, like helping Mom enjoy her daily chores.

As you'll see on these pages, there are many reasons why Voyager can do it all. Starting with a big model choice: popular 127.6-inch-wheelbase Voyager (shown above), agile 109.6-inch-wheelbase Voyager, and Maxiwagon, the roomiest\* on the market. With a selection of luxurious interiors; seating that can accommodate from five to fifteen passengers.

\*Based on cubic capacity calculated by SAE standard HS J1100a

And some new-for-1979 reasons, also, like smart new styling refinements and added smoothness from a new front suspension system with standard tuned coil springs. Added enjoyment from an optional steering column you can tilt for comfort. Optional Sky Lite sun roofs to let in more light and air. You'll agree, the future of family transportation starts right here!

Some of the equipment items pictured on vehicles in this catalog are extra-cost options.



**You can make your Voyager as luxurious as you like.** For maximum luxury, select optional reclining high-back Command bucket seats, like the one shown here, in textured Tuscany velour with vinyl side facings and folding armrests. Included in the Voyager Sport Premium Trim Package.



Our big idea  
about family  
trips. Try it on for  
size!



That's Voyager Maxiwagon (above), the roomiest\* wagon on the market; over eighteen feet long and spacious enough to take as many as fifteen people when optionally equipped with four bench seats behind the front compartment. You can also get a 127.6-inch-wheelbase Voyager with seating for up to twelve; or a 109.6-inch-wheelbase model that can carry up to eight. In all of them, inner space is well utilized, so there's stretch-out room between the seats and pass-

through room between the front and rear compartments. And when you need more space for cargo, the quick-release 3-passenger rear bench seats can be removed in a jiffy. Big side windows offer a panoramic view of the passing scene. Doors are wide, to ease your ins and outs. Choose an optional *sliding* side door, if you'd like. In the rear, you can have Voyager's

full-width single rear door, standard, or optional dual rear doors. You can also select your level of interior luxury: Voyager Sport with Premium Trim, Voyager Sport or Voyager Custom (described on the following pages). And with any Voyager Wagon you get eye-appeal that can spark a family's pride of ownership

... from the neat, color-keyed instrument panel to the clean front-end appearance that's new for '79. If you're looking for the latest in usable family transportation, look here!

\*Based on cubic capacity calculated by SAE standard HS J1100a





**Order an optional Voyager Sport Package.**

Enjoy the luxury of optional high-back Command bucket seats (non-reclining) with striped cloth upholstery, vinyl facings and inboard folding armrests. Also available with swivel base. Where else could you get so much style, surrounded by so much wagon! Seat upholstery, instrument panel, headliner and spare tire cover in blue, green, cashmere or red.

You also get vinyl door and side trim panels with simulated woodgrain trim, color-keyed carpeting, simulated woodgrain applique on lower face of the instrument panel.

**Optional Voyager Sport Package.**  
Includes low-back deluxe vinyl bucket seats.



**Optional Voyager Custom Package**

features plaid vinyl low-back bucket seat upholstery in blue, green or cashmere. Also instrument panel lower skirts, white headliner and color-keyed floor mat.



**Add style, luxury and use-value to your spacious Voyager interior.**

Optional in 8-passenger 127.6-inch-wheelbase PB200 and PB300 models with optional Voyager Sport or Voyager Sport with Premium Trim Package. Here's how it works:

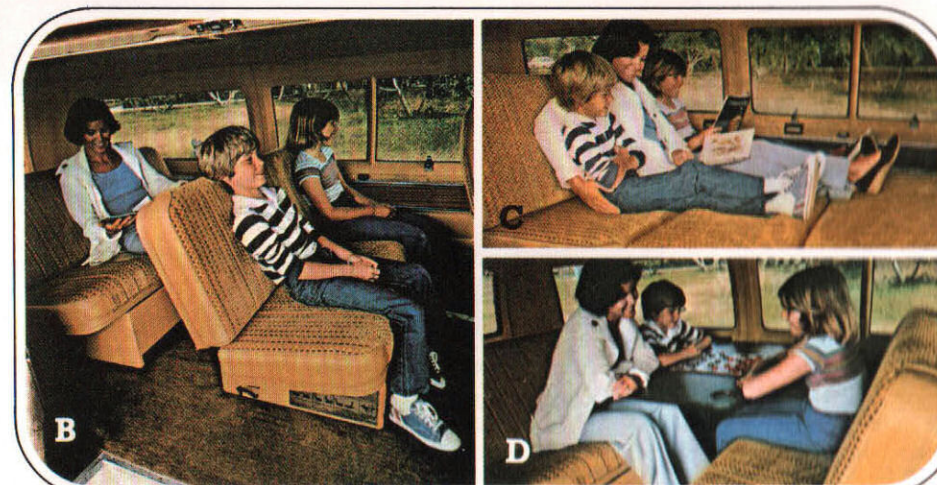
**A** Lower the backs of both bench seats. Now it's a big 54-by-76-inch bed with a handy storage area underneath.

**B** Two quick-release 3-passenger bench seats with fold-down seatbacks replace conventional passenger seats.

**C** Lower the back of the front bench seat. That gives you an ideal place to lounge... on comfortable urethane foam cushioning.

**D** Ready for refreshments? Reverse the forward bench seat... and install the six-place woodgrain finish table. It's easy to do; no tools are needed; leg swings out for support. When not in use, the table is stowed between the first bench seat and side panel, out of the way.

Travel Seating upholstery is either striped cloth in blue or cashmere with optional Voyager Sport interior... or textured velour in cashmere or red, with optional Premium Trim Package.



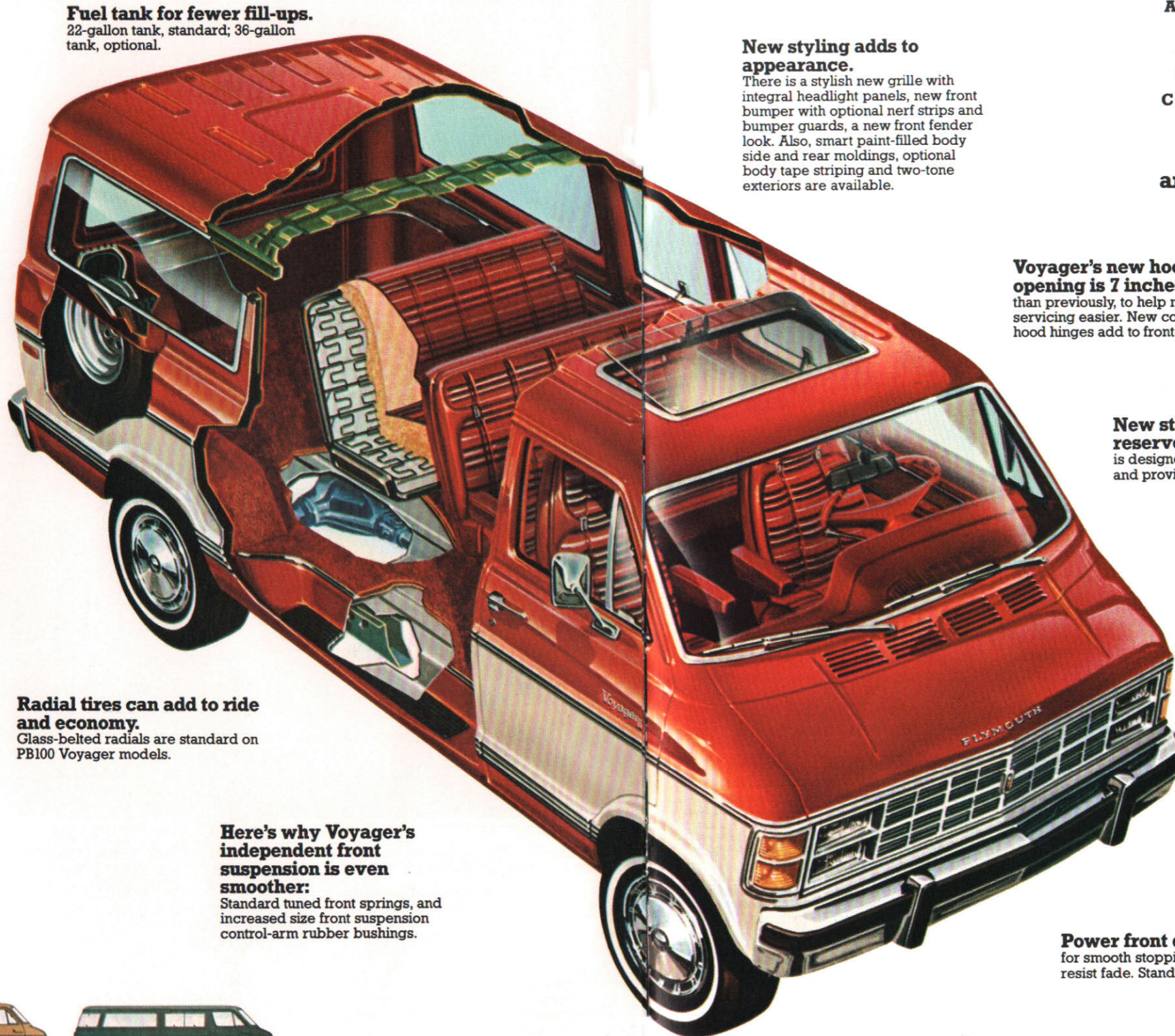


# Look into Voyager for deep-down wagon value!

Here are the "basics" of Plymouth Voyager value . . . strong reasons why this is a most usable family wagon, designed to transport you and yours smoothly, reliably, securely, over a long period of time. For instance, consider this reason for like-new appearance that *lasts*:

## Here's how Voyager makes it tough for rust.

First, many body and chassis components which are exposed to moisture and road salt are made of galvanized steel to protect against corrosion. (This year, galvanized inner surfaces are provided in the sliding side door, hinged dual passenger doors and single rear door.) Then, to provide a durable finish, the body is prepared for the primer coat by a six-stage zinc phosphate wash. Baked high-gloss acrylic enamel paint completes the quality exterior.



**Fuel tank for fewer fill-ups.**  
22-gallon tank, standard; 36-gallon tank, optional.

**Radial tires can add to ride and economy.**  
Glass-belted radials are standard on PB100 Voyager models.

**Here's why Voyager's independent front suspension is even smoother:**  
Standard tuned front springs, and increased size front suspension control-arm rubber bushings.

## New styling adds to appearance.

There is a stylish new grille with integral headlight panels, new front bumper with optional nerf strips and bumper guards, a new front fender look. Also, smart paint-filled body side and rear moldings, optional body tape striping and two-tone exteriors are available.

**Voyager's new hood opening is 7 inches wider** than previously, to help make engine servicing easier. New concealed hood hinges add to front-end style.

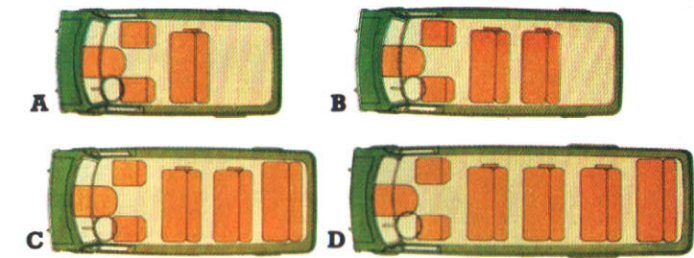
**New standard coolant reserve system** is designed to minimize coolant loss and provide for easy checking.

**Standard 225-cubic-inch Six (PB100).**  
A proved performer designed for efficiency and durability, with 30-degree tilt cylinder block, tin-plated aluminum-alloy pistons, cast-iron crankshaft and much more.

**Prefer V-8 power?**  
Select the 318-cubic-inch V-8, standard in PB200 and PB300, with features such as drop-forged steel connecting rods with aluminum bearings, steel-strut pistons with chrome-plated top compression rings. For even more V-8 power, choose Voyager's even bigger optional 360-cubic-inch V-8 (optional PB200, PB300).

**Power front disc brakes** for smooth stopping are designed to resist fade. Standard all models.

**Sharp turning, agile maneuvering** result from Voyager's short turning diameter.



## Voyager seating arrangements.

- A.** Standard five-passenger seating, all models.
- B.** Optional eight-passenger seating (PB100 with 225 CID Six, 6,000-lb. G.V.W. Package and LR78 x 15-B tires. PB200 and PB300 models).
- C.** Optional twelve-passenger seating (127.6-inch-wheelbase PB300; requires optional 7200-lb. G.V.W. Package).
- D.** Optional fifteen-passenger seating (PB300 127.6-inch-wheelbase Maxiwagon; requires 7800-lb. G.V.W. Package).



Paint Procedure No. 1



Paint Procedure No. 2



Paint Procedure No. 3

### Voyager Exterior Dimensions

109.6" wb. models		127.6" wb. models		127.6" wb. Maxiwagon models	
Height (Max.)	79.6 inches	Height (Max.)	80.9 inches	Height (Max.)	80.6 inches
Width (Max.)	79.8 inches	Width (Max.)	79.8 inches	Width (Max.)	79.8 inches
all models		all models		all models	
Length (Max.)	179.1 inches	Length (Max.)	197.1 inches	Length (Max.)	223.1 inches





Electric rear window defroster



Choice of radios



Electric door locks



Digital clock



Air conditioning



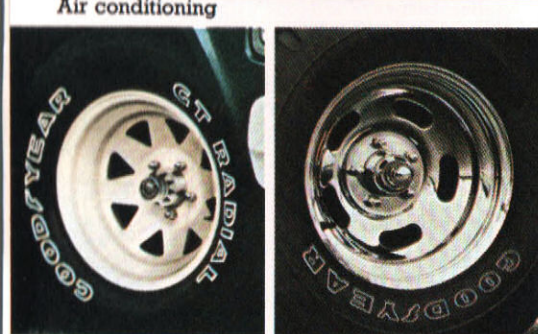
Choice of radios



Tilt steering column



40-channel CB radio



Wide sport road wheel options



Automatic speed control



Trailer-towing packages



Sky Lite sun roof

## Select your Voyager options here.

### New Voyager options available for '79.

- **New electric rear window defroster** for single rear door Voyager. Designed to remove fog or frost from virtually all of the window's surface.
- **New electric door locks.** Available for front driver's compartment doors only, or for front driver's compartment doors and all side and rear passenger compartment doors.
- **New tilt steering column.** The wheel can be tilted easily to any one of seven different positions. Available with optional power steering and automatic transmission.

### For added enjoyment and use-value.

- **Choose your instrument-panel-mounted radio:** AM, AM/FM, AM/FM/MX stereo, AM/FM/MX stereo/eight-track tape, AM/

- 40-channel CB transceiver, AM/FM/MX stereo/40-channel CB transceiver.
- **Digital clock.** With the Voyager Sport or Sport Premium Trim Package, you can order a stylish digital clock with blue-green vacuum fluorescent display.
- **Air conditioning.** Voyager air conditioning is better than ever for '79, with new air-blending temperature control providing "Hi/Lo" mode.
- **Automatic speed control.** On highway trips, you can set your speed. You'll stay at that relative speed until the control is released or the brakes applied.
- **Enjoy a 40-channel CB radio.** With digital CB channel display, monitor mode to override AM or FM reception, squelch control to mute background noise.
- **Three wheel options.** Dress up the PB100 or PB200 model exterior with wide sport road wheels. Choose white-painted steel-spoke wheels. Or select five-slot disc chrome-styled wheels. To make your stylish Voyager even more so. Chrome-styled road wheels are also available.
- **For Voyager PB200 and PB300 trailer-towing packages.**

Hitch Voyager power and ruggedness to the trailer of your choice with either one of two available packages: (1) 1 1/8" outside diameter Class I ball hitch or (2) a heavy-duty version with Class IV tow bar hitch.

- **Sky Lite sun roofs.** Sun Screen safety glass sun roof can be opened slightly or removed completely. Available over driver's compartment of 5- and 8-passenger models . . . and over passenger compartment of 127.6-inch 5- and 8-passenger models.

#### Standard equipment

- Air cleaner—dry type
- Air vent doors—left and right cowl side panels
- 48 amp. alternator (Chrysler 41)
- Antifreeze—-20° F protection
- Driver and front passenger armrests
- Ashtray—driver's compartment
- Battery—48-amp.-hr./305 amp. Cold Crank
- Front and rear painted bumpers
- Automatic choke
- Clutch—10-inch—6-cylinder PB100 models, 11-inch—8-cylinder PB100, PB200
- Power front disc brakes
- Door locks—all doors
- 22 gallon fuel tank
- Glove box with door
- Argent finish grille with 7-inch round headlamps
- Hardboard headliner in driver's compartment
- Heater—fresh air, with defrosters
- Instrumentation—speedometer, odometer, fuel gauge, temperature gauge, ammeter, oil pressure indicator light

- Single electric horn
- Color-keyed horn pad
- Painted hubcaps
- Jack—bumper type (PB100 and PB200 models), axle type (PB300 models)
- Black floor mat—driver and passenger compartment—full width
- Mirrors—interior rearview, exterior rearview, dual 5x7-inch painted heads
- Seats—driver and front passenger low-back vinyl bucket seats with seat belts and retractors (color-keyed); and 3-passenger quick-release vinyl bench seat with 3 seat belts
- Shock absorbers—1-inch front and rear (PB100 models, PB200 Wagons and PB300 models), 1 1/8-inch heavy-duty front and rear (PB200 Maxi wagons)
- Steering wheel—16 1/2-inch diameter, 2-spoke color-keyed (PB100, PB200), 15-inch diameter, 2-spoke color-keyed (PB300)
- Sun visors, padded—driver and front passenger
- Single rear door, with fixed glass
- Double hinged passenger side doors with vented glass
- Spare tire carrier
- Traffic hazard warning switch
- Voyager nameplate on both front doors
- Windshield washers, electric, wiper arm mounted
- Windshield wipers, two-speed (non-intermittent), wet arm

#### Additional Options

(Note: Some of the optional items listed below are included in optional equipment packages and are not available on others. Also, some of the items may have additional requirements. Consult your local Chrysler/Plymouth dealer for specific details.)

- Air conditioning

- Alternator: 63 amp. (Chrysler 60), 117 amp. (Chrysler 100)
- Batteries—59 amp. hr./375 amp. Cold Crank, 70 amp. hr./430 amp. Cold Crank (Maintenance-Free), 85 amp. hr./500 amp. Cold Crank Long Life
- Bright front and rear bumpers
- Bumper guards, front and rear (bright finish)
- Cigar lighter
- Digital clock
- Increased cooling
- Automatic transmission oil-to-air auxiliary cooler
- Rear window electric defroster (for single rear door)
- Dual rear doors, hinged type
- Sliding passenger door
- Door metal check arms
- Door edge protectors—front doors
- Door, inside handle and lock button—rear door(s)
- Engines—318 V-8 (PB100), 360 V-8 (PB200, PB300)
- 36 gallon fuel tank
- Instrumentation—oil pressure gauge and trip odometer, dual calibrated (kilometer/miles per hour) speedometer and (kilometer) odometer
- Tinted glass—windshield or all windows
- Sun Screen (privacy) glass
- Banded glass—front door glass and vent wings
- Bright finish grille with 7-inch round headlamps and grille medallion
- Headlamps—dual, quad rectangular—vertically stacked
- Passenger compartment headliner
- Deluxe high-output heater
- Auxiliary heater in passenger compartment
- Dual electric horns
- In-cab-actuated hood lock release
- Mirrors—interior, 10-inch day/night prismatic type
  - exterior, dual short-arm 5x7-inch bright finish, dual low-mount 6x9-inch paint finish, dual low-mount 6x9-inch bright finish
- Exterior molding packages—upper side and rear molding, lower side and rear molding, upper side and rear and lower side and rear molding
  - Wheel lip molding
  - Two-tone paint procedures 1, 2 or 3
  - Power steering (std. PB300)
  - Radio rear speaker
  - Scuff pads, side step sill
  - Heavy-duty shock absorbers, front and rear, 1 1/8" dia.
  - Spare tire cover
  - Dome lamp switches—all doors
  - Unibelt restraint system
  - Deluxe windshield wipers—two-speed with intermittent wipe
  - Wheels—chrome styled road-type, 15x6.00 inch, wide sport road-type, white-painted steel-spoke 15x7.00-inch or 5-slot chrome-styled disc, 15x7.00-inch
  - Bright hubcaps
  - Wheel covers—bright finish, Premium Class II, bright finish
  - Convenience Package—cigar lighter, glove box lock, 10-inch day/night rearview mirror, in-cab-actuated hood lock release
  - Light Package—ignition switch light with time delay, glove box light, cigar lighter light, automatic door switches for interior dome lights, courtesy lamps—front and side doors
- Luxury Package—automatic transmission (standard PB300), Convenience Package, two-tone paint procedure #2, AM/FM radio including front and rear speakers, power steering (std. PB300), scuff pads front and side passenger doors, wheel covers—bright finish (PB300), Premium Class II bright finish (PB100 and PB200), air conditioning—integral front mounted, automatic speed control, tinted glass—all windows, front door edge protectors, high-back cloth-and-vinyl Command bucket seats, and cloth-and-vinyl bench seat, Light Package, bumper guards front and rear, 15-inch diameter vinyl steering wheel
- Easy Order Package—automatic transmission (standard PB300), Convenience

Package, two-tone paint procedure #1, AM radio, bright front and rear bumpers, bright dual 5x7-inch exterior rearview mirrors, power steering (std. PB300), scuff pads front and side passenger doors, wheel covers, bumper guards, front and rear, 15-inch diameter vinyl steering wheel, automatic door switches for interior dome lights

#### Voyager Custom Package

- Voyager Custom nameplates on front doors
- Bright molding around windshield, side and rear windows (except driver and passenger door windows)
- Bright taillamp bezels
- Bright hubcaps
- Instrument panel lower skirts—right and left
- Cigar lighter
- White non-vinyl-covered headliner in driver and passenger compartment
- Vinyl door and side trim panels with plaid insert
- Color-keyed floor mat with floor insulation
- Dash liner insulation
- Garnish trim over front door headers and around rear compartment windows

#### Voyager Sport Package

- Voyager Sport nameplates on front doors
- Bright lower side and rear molding
- Bright molding around windshield, side and rear windows (except driver and passenger door windows)
- Bright finish grille with 7-inch round headlamps and grille medallion
- Bright taillamp bezels
- Bright hubcaps
- Bright front and rear bumpers
- Dual 5x7-inch bright exterior mirrors
- Woodgrain applique on lower face of instrument panel
- Instrument panel lower skirts, left and right sides
- Cigar lighter
- Horn pad with woodgrain insert
- Vinyl-covered, color-keyed, insulated headliner in driver and passenger compartments
- Color-keyed spare tire cover
- Deluxe vinyl seat trim
- Vinyl door and side trim panels with woodgrain trim
- Color-keyed carpeting with floor insulation
- Dash liner insulation
- Dome light switches, door operated—all doors
- Garnish trim over front door headers, around rear compartment windows and "A" pillar and windshield
- Dual electric horns

#### Voyager Sport Premium Trim Package

- Voyager Sport nameplates on front doors
- Bright lower side and rear moldings
- Bright molding around windshield, side and rear windows (except driver and passenger door windows)
- Dual vertically stacked quad rectangular headlamps with bright grille and grille medallion
- Bright taillamp bezels
- Bright hubcaps
- Bright front and rear bumpers
- Dual 5x7-inch bright exterior mirrors
- Woodgrain applique on lower face of instrument panel
- Instrument panel lower skirts, left and right
- Cigar lighter
- Horn pad with woodgrain insert
- Vinyl-covered, color-keyed, insulated headliner in driver and passenger compartments
- Color-keyed spare tire cover
- High-back deluxe cloth-and-vinyl reclining Command bucket seats and deluxe cloth-and-vinyl bench seat
- Vinyl door and side trim panels with woodgrain trim and front door applique and pull strap
- Color-keyed carpeting with floor insulation
- Color-keyed carpeted engine housing cover
- Dash liner insulation
- Dome light switches, door operated—all doors
- Garnish trim over front door headers, around rear compartment windows and "A" pillar and windshield
- Dual electric horns



## Select your Voyager Wagon here.

Listed below are your basic choices: available wheelbases, seating, paint, drive-line components and options. After you've read the catalog thoroughly, check off what you want. Your Plymouth dealer can then assist you in completing your selection.

### Wheelbase

- 109.6"  127.6"  127.6" Maxiwagon

### Seating Arrangement

- 6 Passenger  12 Passenger  
 8 Passenger  15 Passenger

### Trim Level Packages

- Premium Trim Package  Voyager Custom  
 Voyager Sport  Voyager

### Engine

- Standard 225-cubic-inch Six (PB100)  Optional 360-cubic-inch V8 (N/A PB100)  
 Standard 318-cubic-inch V8 (opt. PB100)

### Paint Procedure

- Procedure No. 1**  
 Upper & lower (50/50 two-tone)  
**Procedure No. 2**  
 Midsection in secondary color, rest of the body in main color

- Procedure No. 3**  
 Roof & midsection in secondary color, rest of body in main color

### Front Seats (includes matching rear bench seat[s])

- High-back deluxe cloth-and-vinyl reclining Command bucket seats,  
 with swivel base  
 High-back cloth-and-vinyl Command bucket seats,  
 with swivel base  
 Low-back deluxe vinyl bucket seats  
 Low-back vinyl bucket seats  
 Travel Seating Package

### Transmission

- Std. 3-speed manual  Optional 3-speed automatic (std. PB300)  
 Optional 4-speed overdrive

### Popular Options

- Tilt steering column  White-painted Steel spoke wheels  
 Sky Lite sun roofs  Auto. speed control  
 Air conditioning  Rear window defroster  
 Trailer-Towing Packages  Chrome five-slot disc wide sport road wheels  
 Chrome-styled road wheels  CB radio AM or AM/FM/MX stereo  
 Digital clock  Dual vertically stacked quad rectangular headlamps (includes bright grille)  
 Electric door locks

## 1979 Plymouth Voyager Specifications

MODEL	PB100 Voyager Wagon					PB200 Voyager Wagon & Maxiwagon		PB300 Voyager Wagon & Maxiwagon		
	4900	5100	5400	5600	6000	6050	6400	6700	7200	7800
G.V.W.	4900	5100	5400	5600	6000	6050	6400	6700	7200	7800
Wheelbase (inches)	109.6	109.6 or 127.6	109.6	127.6	109.6 or 127.6	109.6 or 127.6	127.6	127.6	127.6	127.6
Axle Capacity										
Front	3300	3300	3300	3300	3300	3300	3300	3600	3600	3600
Rear	2800	2800	3550	3550	3550	3550	3550(F)	5500	5500	5500
Spring Ratings (lbs.)										
Front (standard tuned)	1375	1375	1610	1610	1810	1810	1980	1980(G)	2360	2770
Rear										
Brakes										
Front Disc	11.75" x 1.25"					11.75" x 1.25"		12.82" x 1.19"		
Rear Drum	10" x 2.5"					10" x 2.5"		12" x 2.5"		
Booster	Vacuum 9.0" O.D. Dual Diaph.					Vacuum 9.0" O.D. Dual Diaph.		Vacuum 9.0" O.D. Dual Diaph.		
Shock Absor. Dia. (in.)										
Front—Std.	1.0					1.0		1.0		
—Opt.	1-3/16					1-3/16 (std. Maxiwagon)		1-3/16		
Rear—Std.	1.0					1.0		1.0		
—Opt.	1-3/16					1-3/16 (std. Maxiwagon)		1-3/16		
Tire Size	ER78 x 15B	FR78 x 15B	GR78 x 15B	GR78 x 15B	LR78 x 15B(A) HR78 x 15B(B)	I78 x 15B(A) H78 x 15B(B)	L78 x 15C	8.00 x 16.5D	8.00 x 16.5E	8.75 x 16.5E
Wheels Rim Size (in.)	15 x 5.50	15 x 5.50	15 x 5.50	15 x 5.50	15 x 6.50	15 x 6.50(A) 15 x 5.50(B)	15 x 6.50 H.D.	16.5 x 6.0	16.5 x 6.0	16.5 x 6.75
Engine—Std.	225 Six					318 V-8		318 V-8		
—Opt.	318 V-8 (C)					318 V-8		360 V-8		
Transmission	3-speed manual (E)					3-speed manual (E)		3-speed automatic		
Std.	4-speed overdrive (D)					4-speed overdrive (D)				
Opt.	3-speed automatic					3-speed automatic				
Steering—Std.	Manual					Manual		Power		

(A) 109.6" WB

(B) 127.6" WB

(C) Not available with 6000-lb. G.V.W.

(D) Not available in California; not available w/360 V-8 engine

(E) Requires optional 11.4-inch clutch w/225-6 cylinder engine in California (at extra cost)

(F) Rear axle capacity 3850-lb. on B200 Maxiwagon

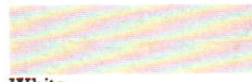
(G) 2360-lb. spring capacity on 6700-lb. G.V.W. B300 Maxiwagon

## Select from 15 exterior colors:

### Straight Shades



Formal Black



White



Cashmere



Medium Canyon Red



Sunburst Orange



Yellow Flame

### Metallics



Light Silver



Cadet Blue



Ensign Blue



Teal Frost



Citron Green



Medium Tan

### Sunfire Metallics



Teal Green



Canyon Red



Sable Brown

## BUY OR LEASE A VOYAGER

All product illustrations and specifications are based on authorized information. Although all descriptions are believed correct at publication approval, accuracy cannot be guaranteed. Some of the equipment shown on product illustrations is optional at extra cost. Chrysler Corporation reserves the right to make changes from time to time, without notice or obligation, in prices, specifications, colors, and materials, and to change or discontinue models.

THAT'S IMAGINATION, THAT'S PLYMOUTH.



Plymouth

A PRODUCT OF CHRYSLER CORPORATION