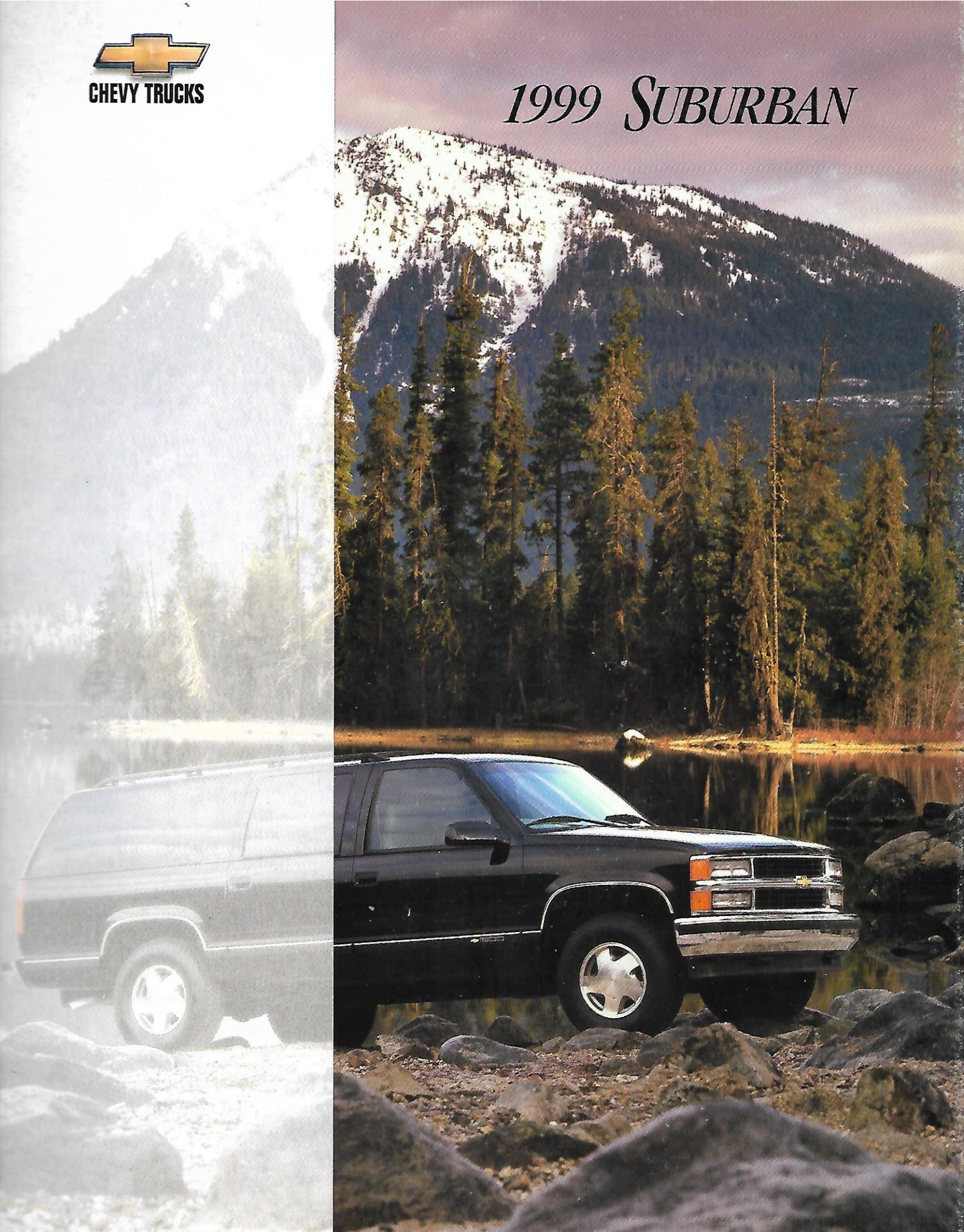


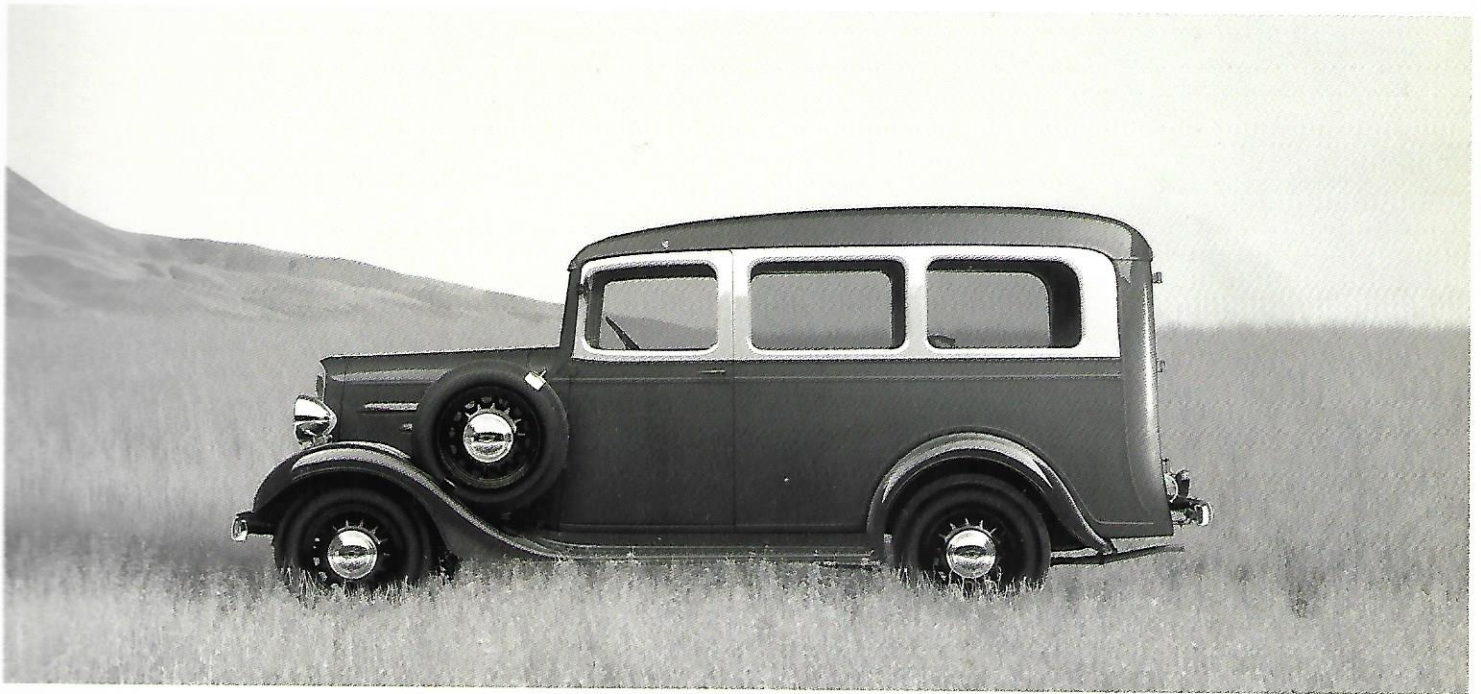


CHEVY TRUCKS

# 1999 SUBURBAN







1936 Suburban Carryall.

*The one that started it all ...*



2500 4x4 Suburban LS in Light Pewter Metallic.

*... is still the one that tows the most,  
carries the most and does the most.\**

CHEVY  SUBURBAN

*Always Was. Still Is.*

\*Based on 2500 Suburban. Excludes other GM vehicles.

*The Legend Continues.*

Since its introduction more than 60 years ago, Chevy Suburban has become the longest-running truck nameplate in automotive history. It's even inspired a whole new category of vehicles.

Truly a giant among sport utilities, Suburban is unsurpassed in its combination of size, passenger and cargo capacity, available Vortec V8 power and trailering strength.\* And for all its luxurious refinement and comfort, Suburban is still a Chevy truck — the most dependable, longest-lasting trucks on the road.†

It's been said that Chevy Suburban stands for what's good and large in life. Perhaps that's why this unique sport utility continues to strike such a responsive chord in American hearts.

And why it's so loved by families who want the biggest and best in their lives.

With this unparalleled success, it's really no surprise that Suburban was recognized in *Kiplinger's 1998 Car Buyer's Guide* as the "Best in Class" among all sport utility vehicles.\*\*

Chevy Suburban. The legend continues.

\*Based on 2500 Suburban. †Dependability based on longevity: 1981–1997 full-line light-duty truck company registrations. Excludes other GM divisions. \*\**Kiplinger's Car Buyer's Guide* is published each year in *Kiplinger's Personal Finance Magazine*. Kiplinger's "Best in Class" award goes to the vehicle in each class that earns the most points in the following categories: Performance and Value, Safety, and Design and Comfort.





*K1500 4x4 Suburban LT in Onyx Black.*













***Generous Seating For Up To Nine Passengers.***

*The wide, front 60/40 split-bench seat gives Suburban full nine-passenger seating. With LS and LT trim levels, six-way power seat for the driver, as well as power lumbar adjustments for both driver and front passenger are standard. LT trim includes rich Custom Leather seating surfaces.*



*Elegant Refinement  
In Grand Style.*

No other sport utility surpasses  
the room, refinement and  
comfort of Chevy Suburban.  
Step inside and you'll marvel  
at its spaciousness.

Settle into the soft, deeply  
padded seats with Custom  
Leather seating surfaces  
(standard with LT trim), and  
you might think they were  
contoured just for you.  
An elegant richness surrounds  
you in Suburban. Comfort and  
conveniences abound.

Which is just the way we  
planned it.







***Center-Row Console.***

*Here's one more way Suburban makes you feel comfortably at home. The split-folding center-row seat features a pull-down armrest that also serves as a center-row console, complete with two handy cup holders and a tissue packet holder.*





LT interior with Custom Leather seating surfaces in Neutral. Shown with optional high-back front bucket seats (includes multi-function floor and overhead consoles)  
Optional Comfort and Security Package.



*A Legacy Of Luxury.*

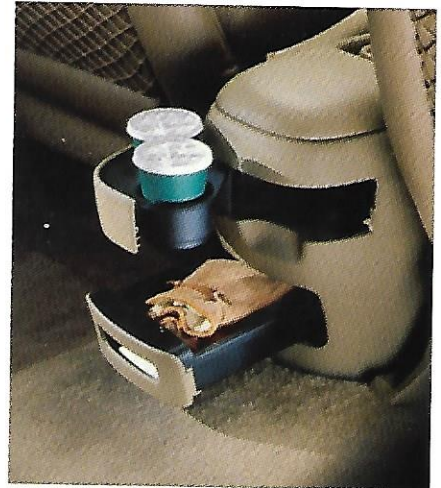






**Front Floor-Mounted Multi-Feature Console.**

Optional high-back front bucket seats include a multi-feature center console. It has a pivoting writing surface, map strap and drop-in removable cup holder. The console also includes rear, dual pull-out cup holders and a slide-out storage drawer for rear passengers, shown at right.



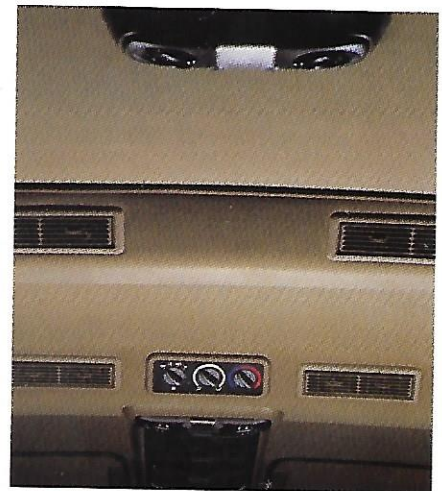
**Overhead Console.**

The handy overhead console includes reading lights and a storage space for small personal items. Included with optional high-back front bucket seats with LS or LT trim.



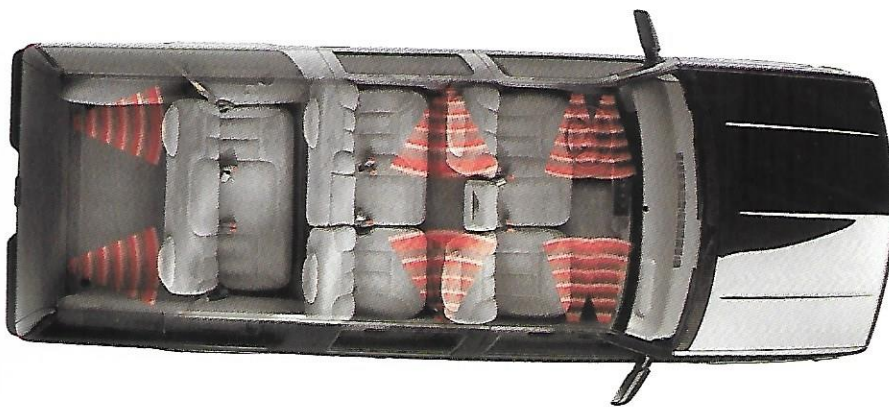
**Rear Cargo-Area Power Door-Locking Switch.**

This handy switch lets you lock and unlock all doors when you're at the rear of Suburban. It's conveniently located on the right-hand rear pillar.



**Front And Rear Heating/Air Conditioning System.**

Standard with LS and LT trim, this feature lets front and rear passengers set separate climate controls for optimum comfort in both summer and winter.



**Enhanced Performance Speaker System.**

The Suburban LS and LT trim sound systems feature eight strategically located premium stereo speakers, which provide "concert hall" quality for your listening enjoyment.





*Suburban instrument panel with LT trim in Neutral. Shown with additional options.*



## *You're In Control.*

There's absolutely no mistaking the feeling of confidence Suburban inspires.

Behind the wheel, its commanding stance is designed to give you an impressive sense of control and an excellent view of the road.

Analog gauges are easy to read and controls are all within convenient reach. Standard speed-sensitive power steering helps make parking and low-speed maneuvering easy, and provides precise control at faster highway speeds. Available features such as the Comfort and Security Package, Autotrac 4x4 system and OnStar can help put you even more at ease.

Confidence and control.  
To experience it, just drive a Chevy Suburban.



### ***Autotrac Push-Button 4x4.***

The available Autotrac four-wheel-drive system automatically adjusts to changing terrain. Push the AUTO 4WD button once and it runs efficiently in two-wheel drive, while four-wheel drive lurks on standby until the moment you need it, springing into action to help keep you out of trouble.



### ***Self-Dimming Rearview Mirror.***

This light-sensitive self-dimming mirror on LS and LT models enhances visibility by automatically dimming to reduce glare reflected from behind you. An eight-point electronic compass and outside temperature readout are included.

## ***Comfort And Security Package.***



### ***HomeLink Transmitter.***

Located in the overhead console, the HomeLink system allows you to program and activate up to three functions such as your garage door, electric gate and even your home's lighting/security systems. Now there's no need for separate hand-held remote controls or changing batteries.



### ***Heated Self-Dimming Outside Mirrors.***

Included only with the optional Comfort and Security Package with LT trim, heated outside mirrors melt snow and ice to help enhance visibility in inclement weather. A self-dimming feature on both driver and passenger sides is included.



### ***Heated Front Bucket Seats.***

Heated front bucket seats help keep you and your front passenger warm on those cold-weather travel days. Included only with the optional Comfort and Security Package with LT trim.





K1500 4x4 Suburban LS in Indigo Blue Metallic.





*In A Class All Its Own.*

With a majestic presence and owner admiration as big as all outdoors, Chevy Suburban truly stands alone. It can be a large people-mover, a rugged cargo-hauler and towing vehicle or a cross-country grand touring machine.

To its owners, Suburban is a trusted friend. And even after years of faithful service, Suburban still retains excellent resale value.

Chevy Suburban. It delivers one-of-a-kind sport utility strength, style and versatility.

\*Per NARA Black Book, 1993 to 1997.



*Superbly Comfortable,  
Well Appointed.*

Through years of fads and fashions, Suburban has remained true to its original mission. That is, to provide a comfortable setting in an uncommonly generous interior space, unrivaled by any other sport utility vehicle.\*

Suburban LS offers a wealth of standard amenities that include electronic speed control, Tilt-Wheel™ steering column, power windows and door locks — and much more.

With these and other features, it's easy to see why so many American families who want the ultimate in a sport utility stay loyal to Chevy Suburban.

\*Excludes other GM vehicles.



*Suburban LS interior with standard front 60/40 reclining split-bench seat in Gray Custom Cloth with third-row seat removed and additional options.*



***Fold-Down Storage Armrest.***

*The versatile fold-down storage armrest (included with the 60/40 split-bench three-passenger front seat) performs several functions. It can store your compact discs and cassettes. A handy lid strap holds maps or other items. And the armrest has a convenient flip-up writing surface for note-taking.*





**Scotchgard™ Protection.**  
The fabric in Chevy Suburban features factory-applied Scotchgard™ protection. It helps the fabric to repel most liquids, stains and dirt, while making it easy to clean.





C1500 2WD Suburban LS in Onyx Black. Shown with center-row split-folding seat partially folded and rear-row seat removed.



### *Unmatched Combination Of Passenger And Cargo Capacity.\**

Why is Chevy Suburban such an enduring sport utility vehicle? Because it's the biggest and quite possibly the most versatile sport utility around. Suburban is a good two feet longer than some compact sport utilities — and more than a foot longer than most others in the full-size class.† That translates into a remarkably comfortable ride and incredibly spacious interior. For example, with available seating for up to nine people, Suburban can carry a family of five and

still have room for four *extra* passengers. And it gives you nearly 150 cu. ft. of cargo space with the center-row seat folded and third-row seat removed (more than any other sport utility).\* Owners tend to boast about how much cargo their Suburban can hold — like up to 62 cartons of copier paper, or two 96-inch kayaks with full gear, or even 70 two-cu.-ft. bags of cypress mulch.\*\* Chevy Suburban — it continues to be prized for its size.

\*Excludes other GM vehicles. †Based on GM classification system. \*\*Important Safety Caution: Unsecured things you put in your vehicle can strike and injure people in a sudden stop or turn, or in a crash. Chevrolet recommends that you never stack heavy things — such as suitcases or boxes containing heavy objects or material — inside the vehicle so that some of them are above the tops of the seats. Also, when you carry something inside your vehicle, secure it whenever you can. For additional information about carrying cargo, see your vehicle's owner manual.





With LS and LT trim, Suburban comes with a front 60/40 split-bench three-passenger seat, a center-row split-folding seat and a rear-row bench seat to accommodate up to nine passengers.



**Your Choice Of Standard Rear Panel Doors Or Available Liftglass/Dropgate.**

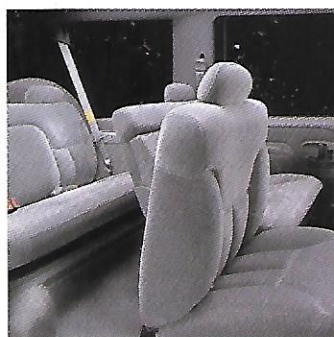
Suburban has two convenient ways to access the rear cargo area. You can choose standard swing-out dual rear panel doors or the no-cost tailgate option with liftglass. Dual rear panel doors have electric rear-window defoggers, while the available liftglass/dropgate feature includes a power liftglass release, electric defogger and wiper/washer.



**Exceptional Cargo Space.**

No sport utility gives you more room\*. Simply remove the rear-row seat, fold down the 60/40 split-folding center-row seat, and you have 149.5 cu. ft. of cargo space for all the things you want to take along.

\*Excludes other GM vehicles.



**Easy Entry For Rear-Seat Passengers.**

Access to the rear seat is easy, thanks to a special feature on the center-row split-folding bench seat. It allows the right-hand section of the seat to slide forward, clearing the way for passengers.

INTERIOR DIMENSIONS	(inches)
Height of rear-door opening	36.5
Width of rear opening @ floor	56.0
Cargo-area width	64.1
Cargo-area height	40.8
Cargo floor width @ wheelwells	48.5
Load floor length to front seat	97.7
Load floor length to center-row seat	70.9
Load floor length to rear-row seat	36.0
CARGO VOLUME	(cu. ft.)
With center-row seat folded and third-row seat removed*	149.5
With third-row seat removed*	96.6
With center- and third-row seats in place*	47.5

\*Measured floor to roof.



**Reversible Cargo Mat.**

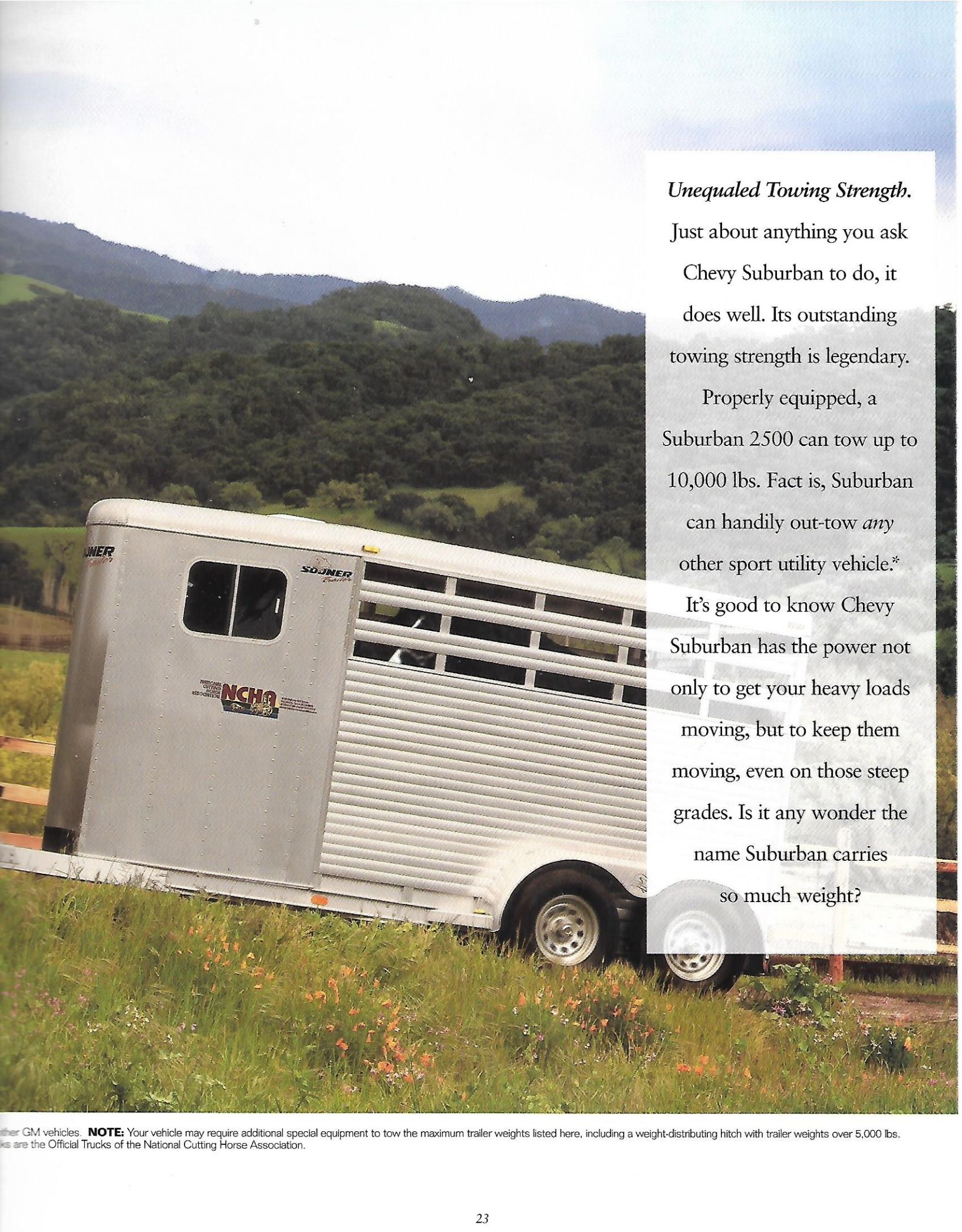
Included in the optional Comfort and Security Package, this mat has carpet on one side and vinyl on the other. Use the carpeted side for general use. Then, flip it over and use the easy-to-clean vinyl side for heavy-duty cargo-carrying. The package also includes front and rear carpeted floor mats.





K2500 4x4 Suburban LT in Light Pewter Metallic.





*Unequaled Towing Strength.*

Just about anything you ask Chevy Suburban to do, it does well. Its outstanding towing strength is legendary.

Properly equipped, a Suburban 2500 can tow up to 10,000 lbs. Fact is, Suburban can handily out-tow *any* other sport utility vehicle.\*

It's good to know Chevy Suburban has the power not only to get your heavy loads moving, but to keep them moving, even on those steep grades. Is it any wonder the name Suburban carries so much weight?

\*Other GM vehicles. **NOTE:** Your vehicle may require additional special equipment to tow the maximum trailer weights listed here, including a weight-distributing hitch with trailer weights over 5,000 lbs. Trucks are the Official Trucks of the National Cutting Horse Association.



## TRAILERING DATA

Weight-carrying hitch limit is 5,000 lb. trailer with 500 lb. tongue weight. Weight-distributing hitch and sway control required over 5,000 lb. trailer weight.

ENGINE TRANSMISSION	VORTEC 5700 V8 AUTOMATIC		VORTEC 7400 V8 AUTOMATIC		6.5 LITER TURBO-DIESEL V8 AUTOMATIC	
MODEL	MAX. TRAILER WEIGHT (lbs.) <sup>1</sup>	REQUIRED AXLE RATIO	MAX. TRAILER WEIGHT (lbs.) <sup>1</sup>	REQUIRED AXLE RATIO	MAX. TRAILER WEIGHT (lbs.) <sup>1</sup>	REQUIRED AXLE RATIO
C1500 — 2WD	5500 <sup>2</sup> 6500 <sup>2</sup>	3.42 3.73			8000	3.42
K1500 — 4x4	5000 <sup>2</sup> 6000	3.42 3.73			7500	3.42
C2500 — 2WD	6000 7500	3.73 4.10	8500 10,000	3.73 4.10	8000 8000	3.73 4.10
K2500 — 4x4	7000	4.10	8000 10,000	3.73 4.10	7500 7500	3.73 4.10

<sup>1</sup> Trailer ratings are calculated assuming the driver and one passenger are in the tow vehicle and it has all required trailering equipment. Additional optional equipment, passengers or cargo may reduce trailer rating. <sup>2</sup> Requires optional engine oil cooler (RPO KC4) or Heavy-Duty Trailering Equipment Package.

## GROSS COMBINATION WEIGHT RATINGS (GCWRs)

THE USE OF GCWRs TO DETERMINE ENGINE, TRANSMISSION AND REAR AXLE RATIO. Perhaps you prefer to use Gross Combination Weight Ratings (GCWRs) to determine the powertrain you will require to tow a specific trailer with your Suburban. The chart shows you the maximum allowable GCWR based on all the available truck engines and rear axle ratios. The GCWR includes the total loaded weight of both the truck and the trailer. Any available engine may be used for trailering if the GCWR shown is not exceeded.

GCWR (lbs.)	GAS ENGINE AVAILABILITY	AXLE RATIO
11,000 <sup>1</sup>	Vortec 5700 V8	3.42
12,000	Vortec 5700 V8	3.73
13,500	Vortec 5700 V8	4.10
15,000	Vortec 7400 V8	3.73
17,000	Vortec 7400 V8	4.10

<sup>1</sup> GCWR is limited to vehicle GVWR plus 2,000 lbs. if not equipped with (RPO KC4) engine oil cooler.

**NOTE:** Trailer tongue weight should be 10 to 15 percent of total loaded trailer weight (up to 1,000 lbs.). Addition of trailer tongue weight cannot cause vehicle weights to exceed Rear Gross Axle Weight Rating (RGAWR) or Gross Vehicle Weight Rating (GVWR). These ratings can be found on the certification label located on the driver's front door or door frame.

**NOTE:** The vehicle owner is responsible for obtaining the hitch ball, a hitch of the proper size, type and capacity, and other appropriate equipment required to safely tow both the trailer and the load that will be towed. Transmission oil cooler is standard. Additional air-to-oil cooler (RPO KNP) is standard on 2500 models and available on other models. Above 2,000 lb. trailer rating, engine oil cooler (RPO KC4) is required on models with a gas engine and 3.42 axle ratio. Engine oil cooler is standard on all other models. Heavy-Duty Trailering Equipment Package (RPO Z82) includes weight distributing hitch platform and, when required, engine oil cooler and transmission oil cooler. Trailer hitch ball and mount (RPOV96) is available with this package. Eight-wire trailer wiring harness is standard on all models. Ask your Chevrolet dealer for advice about towing and the proper towing equipment for your vehicle.

GCWR (lbs.)	DIESEL ENGINE AVAILABILITY	AXLE RATIO
14,500	6.5 Liter Turbo-Diesel V8	3.42
14,500	6.5 Liter Turbo-Diesel V8	3.73
14,500	6.5 Liter Turbo-Diesel V8	4.10

## TRAILERING BASICS.

Towing a trailer involves all major vehicle systems of your Chevy truck, including powertrain, steering, suspension and brake systems. Easy and safe trailering requires a properly equipped vehicle, additional trailering equipment and an appropriate trailer. It also requires loading both the vehicle and trailer properly, using safe driving techniques, meeting regional legal requirements and following break-in and maintenance schedules. You are responsible for being sure you have the appropriate equipment and hitch for your specific trailering situation. If you plan to tow a trailer, consult your owner's manual and speak to a trailering expert at your Chevrolet dealership or visit our web site at [www.chevrolet.com](http://www.chevrolet.com).

The charts above will assist in determining how to best equip your Chevy truck for trailering. To help you understand the charts, consider these trailering factors:

**TORQUE:** Indicates the strength of the engine. Low-end torque reflects how much force is generated to get your vehicle moving.

**HORSEPOWER:** Indicates how much work the engine does at a certain engine speed. At mid-to-high-engine rpm, it's what keeps you moving at highway speeds.

**AXLE RATIO:** Along with your vehicle's transmission gears, a higher rear axle ratio contributes to how much available torque and horsepower (mechanical leverage) can be applied to the drive wheels for launch and uphill performance. Higher rear axle ratios, however, sacrifice fuel economy when not trailering.

**BALL HITCH TRAILERING:** There are two types of ball hitches. A weight-carrying hitch consists of a ball and coupler with no means to distribute the hitch weight. It is used primarily for lightweight trailers. Heavier trailers, however, require a weight-distributing hitch which uses spring bars to transfer some of the hitch weight forward onto the tow vehicle's front axle and rearward onto the trailer's axle(s).

**GCWR:** The Gross Combination Weight Rating is the total allowable weight of the completely loaded vehicle and trailer including any passengers, cargo, equipment and conversion. A properly equipped tow vehicle and trailer at the maximum GCWR should be able to accelerate and merge with traffic, climb typical interstate grades at highway speeds, handle the combination on most road surfaces and stop adequately within a reasonable distance. The GCWR for your vehicle should not be exceeded.

**MAXIMUM TRAILER RATING:** This rating is determined by subtracting the tow vehicle's weight (curb weight) from the GCWR. When a base vehicle (curb) weight is used, additional passengers, equipment and cargo weight must be added and will reduce the maximum trailer rating.

**A NOTE ABOUT TRAILER RATINGS:** There is no industry standard for trailer weight ratings. Definitions vary by manufacturer. Chevrolet includes the weight of the most popular options as well as a driver and one passenger and all required trailering equipment to ensure that trailer ratings are realistic. When comparing trailer ratings, note that competitor ratings may not consider the weight of optional equipment or the additional passenger so comparisons may not be equivalent.

## TRAILERING CAUTIONS.

**NOTE:** Please read this Trailering Caution safety information before trailering with your new vehicle.

**NOTE:** The safety steps described here are by no means the only precautions to be taken when trailering. See the owner's manual for the Chevy truck of your choice for additional guidelines and trailering tips.

If you don't use the correct equipment and drive properly, you can lose control of your vehicle when you pull a trailer. For example, if the trailer is too heavy, your vehicle brakes may be less effective. You and your passengers could be seriously injured. Pull a trailer only after taking the following steps:

### TRAILER BRAKES

If your trailer weighs more than 1,000 lbs. loaded, then it must have its own adequate brakes. Be sure to read and follow the instructions for the trailer brake controller so that it is installed, adjusted and maintained properly.

Don't tap into your vehicle's brake system if the trailer's brake system will use more than 0.02 cu. in. of fluid from your vehicle's master cylinder. If it does, neither braking system will work well. You could even lose your vehicle brakes.

The trailer brake parts must be able to take 3,000 psi of pressure. If not, the trailer brake system must not be used with your vehicle. If everything checks out thus far, then have a qualified individual make the brake fluid tap at the port on the master cylinder that sends fluid to the rear brakes. Don't use copper tubing because it will bend and ultimately break. Use only steel brake tubing.

### HITCHES

It's important to have the correct hitch equipment. Crosswinds, large trucks going by and rough roads are just a few of the reasons why you'll need the right hitch. Here are some rules to follow:

If you'll be towing a trailer that, when loaded, weighs more than 5,000 lbs., be sure to use a frame-mounted, weight-distributing hitch and sway control of the proper size. The equipment is very important for proper vehicle loading and good handling when you're driving.

If you have to make any holes in the body of your vehicle to install a trailer hitch, be sure to seal the holes if you ever remove the hitch. If they're not sealed, dirt, water and deadly carbon monoxide from the exhaust can get into your vehicle.



## Unparalleled Vortec Power.

Suburban backs its imposing stature with a standard 255 horsepower Vortec 5700 V8 SFI engine. For still more get up and go, a 290 hp Vortec 7400 V8 engine is available on Suburban 2500 models.

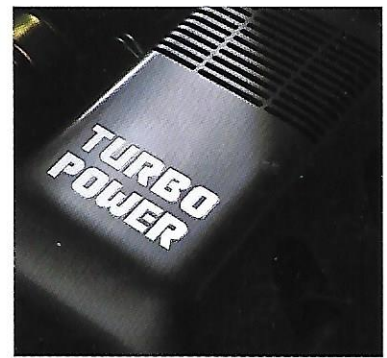
Both Vortec V8 engines deliver an uncompromising blend of power, efficiency and dependability.

And both are matched to a smooth-shifting, electronically controlled four-speed automatic overdrive transmission.



### Torque-Rich Vortec Power.

Whichever Vortec V8 engine you choose, you'll have an abundance of power and torque to do the things Suburban does best — pass, haul and tow with authority.



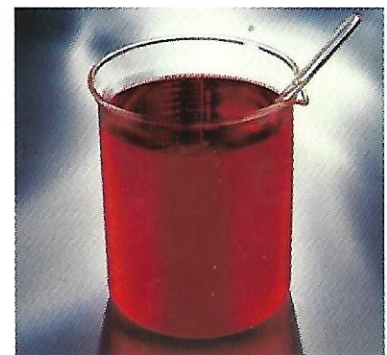
### Available Turbo-Diesel V8 Power.

If you prefer the advantages of diesel power, Suburban offers a strong 195 hp 6.5 Liter Turbo-Diesel V8 engine\* that provides exceptional performance and dependability.



### Large Fuel Tank.

Fill up the huge 42-gallon<sup>†</sup> Suburban fuel tank and you're ready for a highway trip of more than 700 miles (C1500 2WD model). That's enough to take you from Portland, Maine to Cleveland, Ohio, covering six states across the northeast U.S.



### Extended-Life Engine Coolant.

The Vortec V8 and 6.5 Liter Turbo-Diesel engine can go up to 150,000 miles or five years (whichever comes first) before its first scheduled coolant change.\*\*



### 100,000-Mile Spark Plugs.

The Vortec V8 engines in Suburban are so advanced you could travel coast to coast about 35 times before the platinum-tip spark plugs are due for their first scheduled replacement.\*\*

ENGINE	VORTEC 5700 V8 SFI <sup>1</sup>	VORTEC 7400 V8 SFI <sup>1</sup>	6.5 LITER TURBO-DIESEL HD <sup>2</sup> V8 <sup>3</sup>
Displacement (liters)	5.7	7.4	6.5
HP @ RPM	255 @ 4600	290 @ 4000	195 @ 3400
Torque (lb.-ft.) @ RPM	330 @ 2800	410 @ 3200	430 @ 1800
Transmission	Electronically controlled four-speed automatic with overdrive <sup>4</sup>		
POWERTRAIN AVAILABILITY			
C/K1500 Suburban	S	—	O
C/K2500 Suburban	S	O	O

\*This diesel engine includes an exclusive limited warranty for five years or 100,000 miles, whichever comes first. A \$100 deductible per repair visit applies after 3 years/36,000 miles. Ask your Chevy Truck dealer for terms of this limited warranty. <sup>†</sup>Approximate fuel tank capacity. EPA estimated MPG is 14 city/18 highway. Actual mileage may vary. \*\*Maintenance needs vary with different uses and driving conditions. See the owner's manual for more information.

S — Standard. O — Optional.

<sup>1</sup> Sequential Fuel Injection. <sup>2</sup> Heavy-Duty Emissions. <sup>3</sup> This diesel engine includes an exclusive warranty for five years or 100,000 miles, whichever comes first. A \$100 deductible per repair visit applies after 3 years/36,000 miles. Ask your Chevy Truck dealer for terms and conditions of this limited warranty. <sup>4</sup> Includes brake/transmission shift interlock; heavy-duty transmission included with optional 6.5 Liter Turbo-Diesel V8 engine and in all C/K2500 Series models.



*Full-Size Safety Features  
For You and Your Family.*

Just as Suburban is designed to reward you with full-size room and strength, it's also engineered to provide safety and security for your family.

Whatever the weather and road conditions, you'll have peace of mind knowing that Chevy Suburban 4x4 with available Autotrac 4WD system can help make the going easier.

And you'll appreciate the fact that standard safety features like four-wheel ABS, Daytime Running Lamps, side door beams and Next Generation driver and right front-passenger air bags,\* are all on board.

**A NOTE ON CHILD SAFETY:**

Children generally are safer if they are secured in a rear seat using the appropriate child safety seats and restraints, which is why General Motors recommends that child safety seats be properly secured in a vehicle's rear seat. Never place an infant in a rear-facing restraint in the front seat of any vehicle equipped with an active air bag. See your vehicle owner's manual and child safety seat instructions for more safety information.



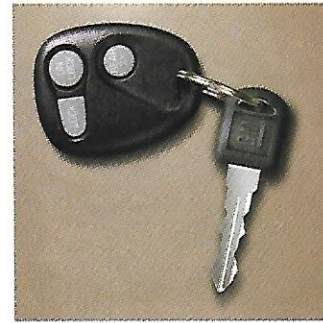
*K1500 4x4 Suburban LT in Indigo Blue Metallic. Shown with available Autotrac 4WD system engaged.*

\*Always use safety belts and proper child restraint even with Next Generation air bags. See the owner's manual for more safety information.



**Passlock®  
Theft-Deterrent System.**

You'll feel secure knowing your Suburban is equipped with Passlock®. It automatically disables the vehicle's fuel system for approximately ten minutes if the proper key is not used.

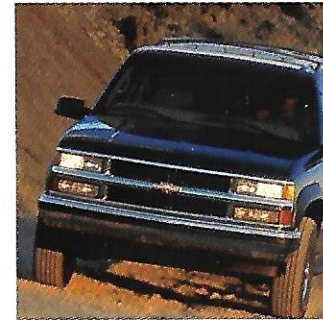


**Remote Keyless Entry.**

Here's a security feature that lets you get in — and get going — quickly. With Remote Keyless Entry, you can lock and unlock the doors and tailgate from up to 30 feet away. A horn "chirp" feature confirms that doors are locked.

**Advanced Autotrac  
4WD System.**

Suburban 4x4 models with available Autotrac give you four different driving modes. This includes the security and convenience of AUTO 4WD.



**Daytime Running Lamps.**

They'll see you coming in your Suburban, thanks to its standard Daytime Running Lamps (DRL). During the daytime, reduced-intensity low-beam headlamps come on automatically to alert other drivers on the road to your oncoming vehicle.

**AUTO 4WD** — Detects wheel slippage and automatically shifts into and out of 4WD, as road conditions dictate. Just set it, and then let it do the work.

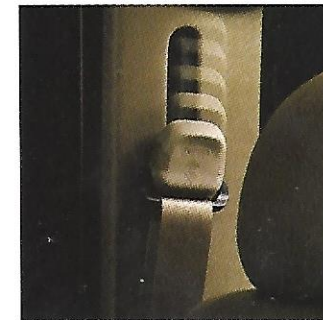


**Side Door Beams.**

Suburban has double-wall steel doors that are reinforced with structural steel beams. They are designed to help reduce intrusions into the passenger compartment during shallow-angle side impacts.

**2HI** — Two-wheel drive for most driving conditions and best fuel economy.

**4HI** — Full-time four-wheel drive for snow, ice, rain and most off-road conditions.



**Shoulder Belt Guide Loops.**

Adjustable shoulder belt guide loops offer several positions to help the driver, right front-passenger and center-row outboard passengers adjust safety belts for individual comfort. In-board safety belt buckles are seat-mounted for easy buckling and unbuckling.

**4LO** — Low-speed four-wheel drive for extreme conditions like steep hills, deep sand, mud or deep snow.

**NEUTRAL** — There is also a provision for Neutral.

**Standard Four-Wheel Antilock Brake System (ABS).**

Four-wheel ABS is standard in every Suburban. It helps keep you in control by reducing wheel lockup while braking hard on most slippery surfaces.



**OnStar**

With this remarkable service day or night, an OnStar advisor is available to provide emergency help, directions, hotel, restaurant locations and much more. In an accident where air bags deploy, OnStar will automatically send a call for help and your vehicle's location to the OnStar Center, where trained advisors will immediately contact emergency assistance. OnStar is a dealer-installed option. For more information call 1-888-667-8277.



**Two-Stage Multi-Leaf Rear Springs.**

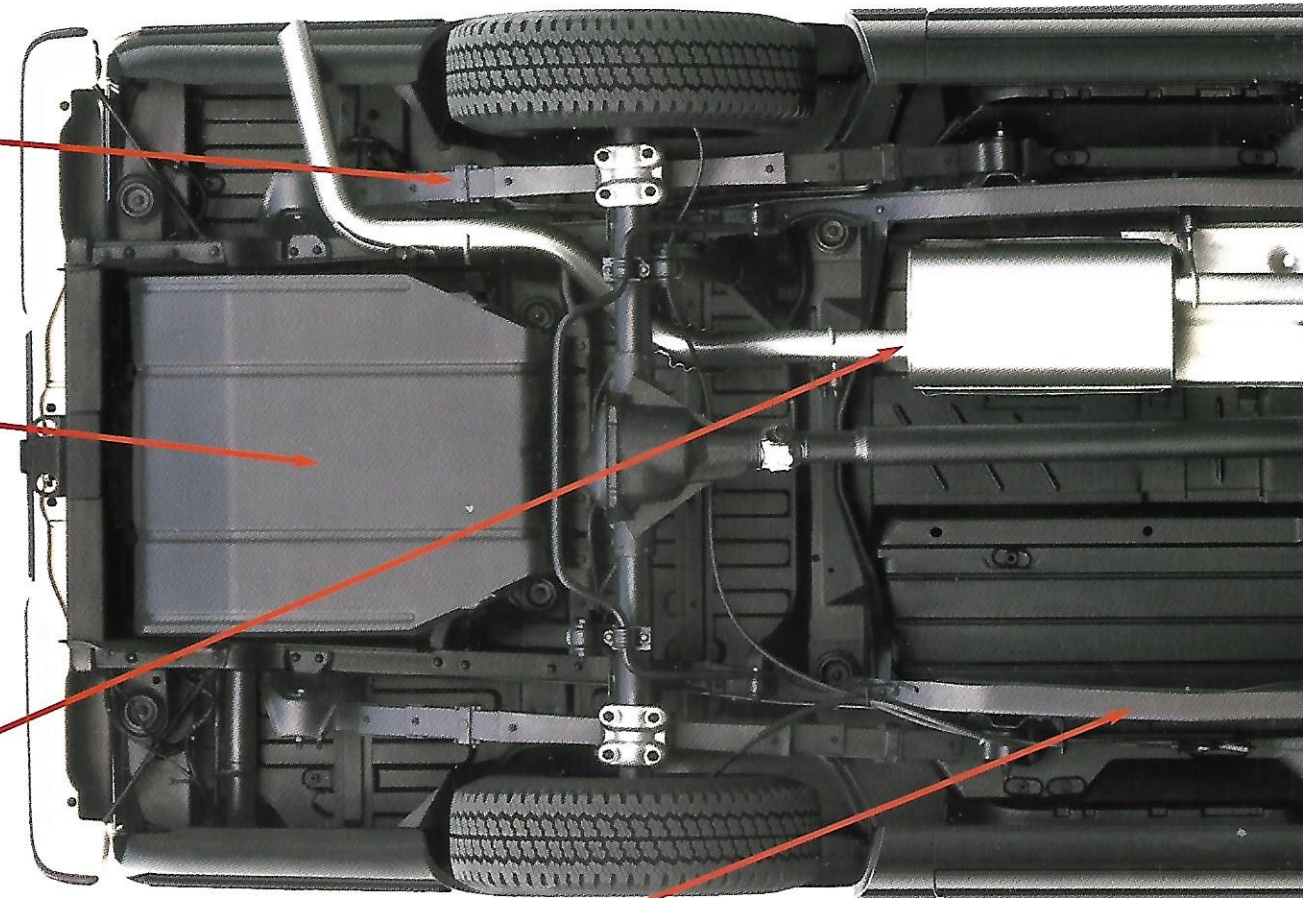
Specially designed second-stage springs engage as load weight increases — without sacrificing ride quality.

**Long-Range Fuel Tank.**

Suburban has the travel range you might associate with small, private aircraft. Its tank holds approximately 42 gallons of fuel — enough for a nonstop highway trip of more than 700 miles (2WD C1500 model).

**Stainless-Steel Exhaust System.**

The muffler and all pipes from the converter back are made of aluminized stainless steel for long-lasting durability and excellent protection against corrosion.



**Wax-Dipped Frame.**

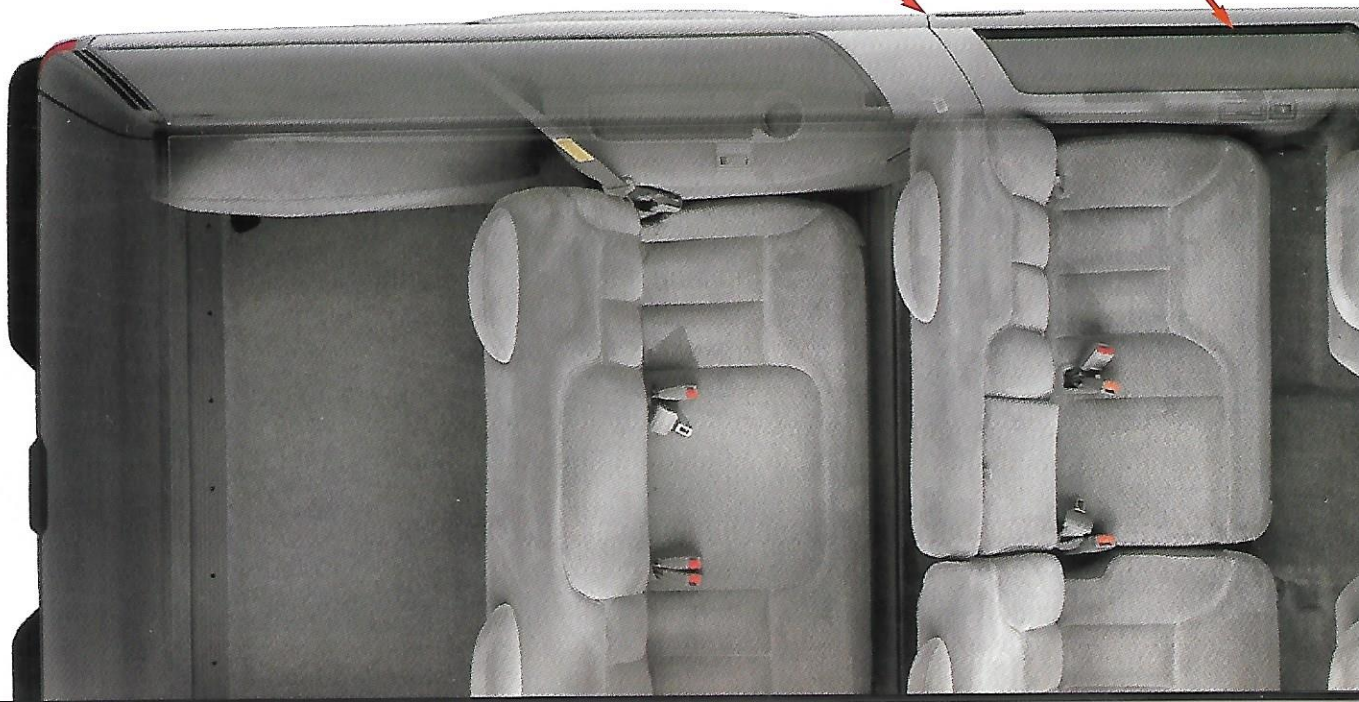
As part of the extensive Suburban corrosion protection process, the entire frame is dipped in a special wax during assembly.

**Triple Door Seals.**

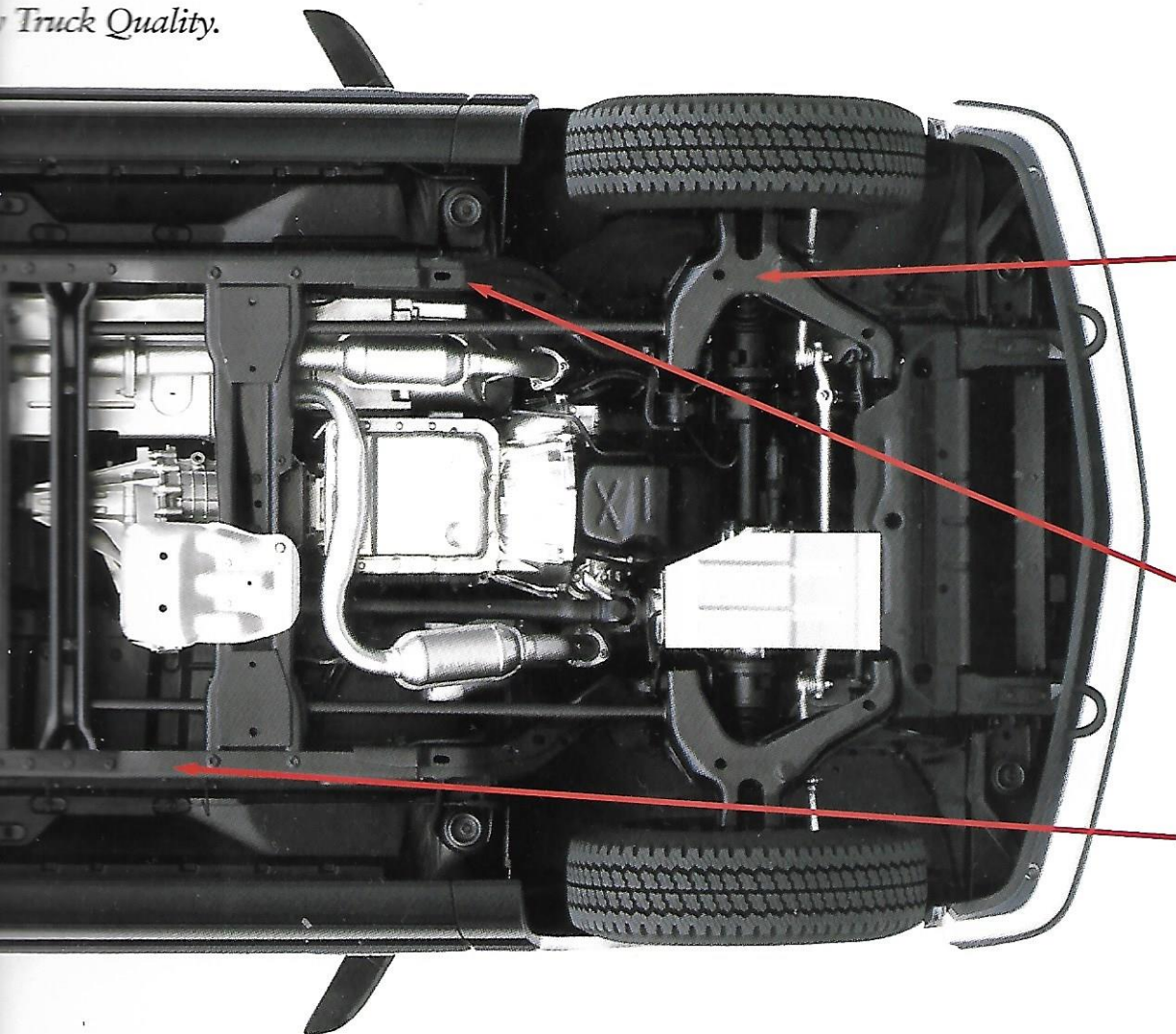
Triple door seals help seal noise, dust and weather outside, so you can enjoy the quiet inside.

**Flush-Mounted Windows And Door Handles.**

This design helps quiet the ride by reducing wind noise. It enhances the appearance of Suburban, while contributing to overall fuel efficiency.







**Independent Front Suspension.**  
For a stable ride and precise control, Chevy Suburban features a rugged and reliable independent front suspension system (torsion bar design with 4x4; coil spring design with 2WD) that helps keep the front wheels virtually straight up and down at all times.

**Steel Ladder-Type Frame.**  
A ladder-type design — with boxed front sections that help support the engine and front suspension — provides exceptional strength and rigidity.

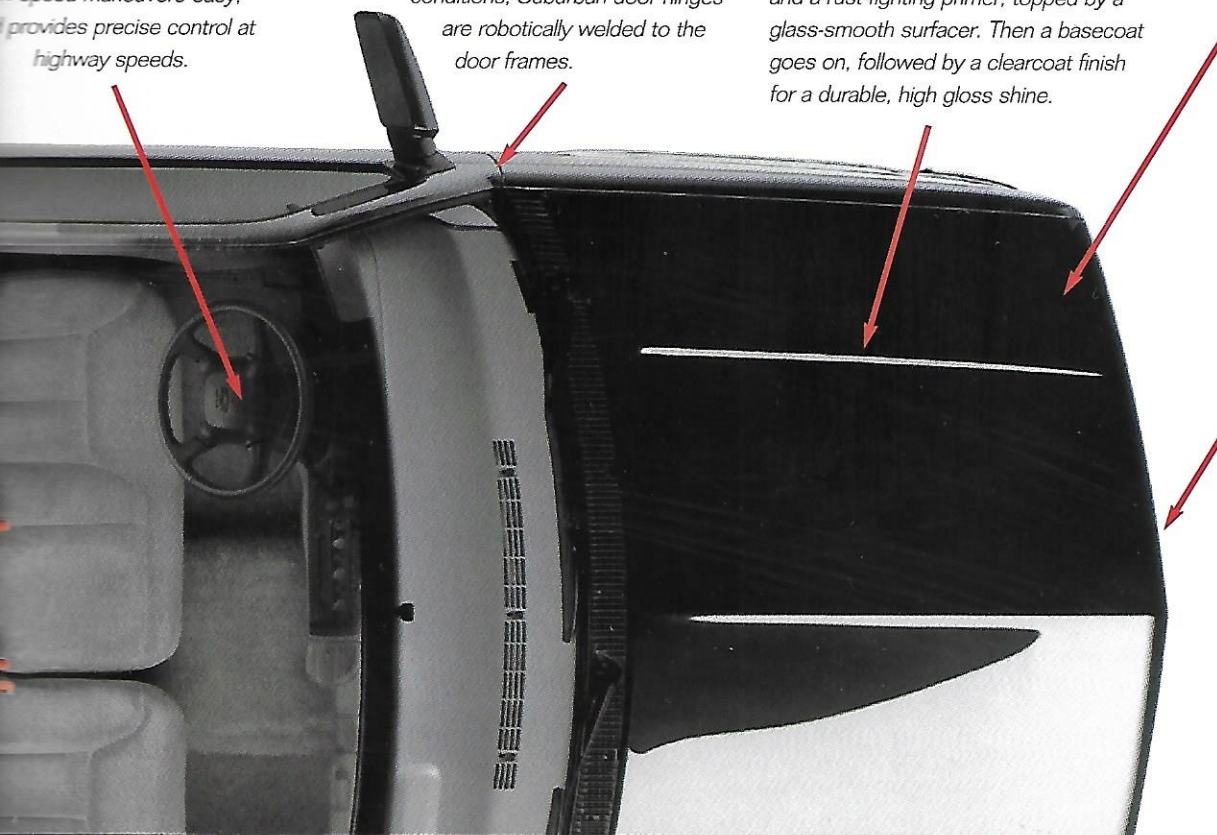
**Drop-Center Frame Design.**  
A drop-center frame helps provide a low step-in height, while maintaining sufficient ground clearance for off-road conditions.

**Electronically Enhanced Power Steering.**  
Electronically enhanced power steering system makes low-speed maneuvers easy, and provides precise control at highway speeds.

**Precision-Aligned Door Hinges.**  
Designed to stay firmly in position over time and through rough driving conditions, Suburban door hinges are robotically welded to the door frames.

**Lasting Good Looks.**  
In its extensive five-step paint process, Suburban receives phosphate coatings and a rust-fighting primer, topped by a glass-smooth surfacer. Then a basecoat goes on, followed by a clearcoat finish for a durable, high gloss shine.

**Galvanized-Steel Body.**  
Suburban body panels (except the roof) are made of two-sided galvanized steel for unsurpassed protection against corrosion. The zinc coating helps prevent surface rust on the outside due to minor chips and scratches, and helps reduce the possibility of rust-through holes which could start from the inside.



**Crush Zones.**  
To help protect passengers in the event of a collision, the front and rear structures are designed to help absorb energy in a controlled manner.



## Buyer's Guide — Exterior Standard And Optional Features.

EXTERIOR FEATURES	BASE	LS	LT
S — Standard with trim level. O — Optional.			
Air dam: dark argent (1500 Series only)	S	S	S
Body: two-sided galvanized steel (except roof)	S	S	S
Body: with dual rear panel doors	S	S	S
Body, tailgate: with rear liftglass/dropgate (includes power liftglass release; available as a no-cost option in place of panel doors)	O	O	O
Bumpers: chromed front and rear: with black rear step pad (LS and LT trim also include bright accent strips)	S <sup>1</sup>	S <sup>1</sup>	S <sup>1</sup>
Daytime Running Lamps (DRL)	S	S	S
Grille: — argent-painted, molded Duragrille with single halogen sealed-beam headlamps — chrome deluxe with dual composite halogen headlamps	S	—	—
Lamps, roof marker: five	O <sup>2</sup>	O <sup>2</sup>	O <sup>2</sup>
Luggage carrier, roof: black	—	S	S
Mirrors, outside: — dual below-eyeline, RH and LH, black fold-away — dual electric, below-eyeline: fold-away, black, RH and LH — dual camper-type, stainless-steel	S	—	—
Moldings: — body-side: with bright trim and bright wheel-opening moldings — wheel-opening flare	S	S	S
Running boards, step: graphite color dealer-installed — support 600 lbs. each (not available with Skid Plate Package)	O <sup>4</sup>	O <sup>4</sup>	O <sup>4</sup>
Wipers, windshield: with intermittent feature and pulse washers	S	S	S

**NOTE:** Some individually available options listed may be included in, or be ordered only with, specific Preferred Equipment Groups. Please see the Preferred Equipment Groups chart for content and availability. Some additional ordering restrictions may apply. Please see your salesperson for details.

**NOTE:** The Suburban trim features indicated reflect only a portion of the total content of each trim level. See your Chevy Truck dealer for complete listings.

CHASSIS FEATURES	BASE	LS	LT
Active transfer case: Autotrac automatic 4-wheel drive (4x4 models only)	O <sup>5</sup>	O	O
Air cleaner, high capacity	O	O	O
Brake system, power-assisted: front disc/rear drum with 4-wheel ABS	S	S	S
Cold Climate Package (includes engine block heater)	O <sup>6,7</sup>	O <sup>6,7</sup>	O <sup>6,7</sup>
Cooler: engine oil (1500 Series only)	O <sup>6</sup>	O <sup>6</sup>	O <sup>6</sup>
Cooler, transmission: auxiliary, heavy-duty	O <sup>8</sup>	O <sup>8</sup>	O <sup>8</sup>
Differential, locking rear	O	O	O
Exhaust system: aluminized stainless-steel	S	S	S
Fuel tank, approximate capacity: 42 gallons	S	S	S
Recovery hooks: 2 front (standard on 4x4 models)	O	O	O
Skid Plate Package: includes front differential, transfer case and fuel tank shields (4x4 models only)	O	O	O
Springs, front heavy-duty (4x4 models only)	O	O	O
Steering, power: speed-sensitive	S	S	S
Trailer hitch ball and mount	O <sup>9</sup>	O <sup>9</sup>	O <sup>9</sup>
Trailer provisions: 8-lead trailer wiring harness	S	S	S
Trailer special equipment: includes trailering hitch platform (1500 Series with Vortec 5700 V8 also includes engine oil cooler and auxiliary heavy-duty transmission cooler)	O <sup>10</sup>	O <sup>10</sup>	O <sup>10</sup>

### MODEL SELECTOR

MODEL	GVWR (LBS.)	TRIM AVAILABILITY		
		BASE	LS	LT
C1500 2WD	6800 <sup>11</sup>	S	O	O
K1500 4x4	7300 <sup>12</sup>	S	O	O
C2500 2WD	8600	S	O	O
K2500 4x4	8600	S	O	O



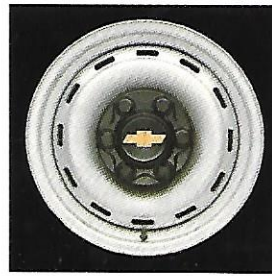
2WD C1500 70.7"  
2WD C2500 73.1"  
4x4 K1500 72.8"  
4x4 K2500 74.1"



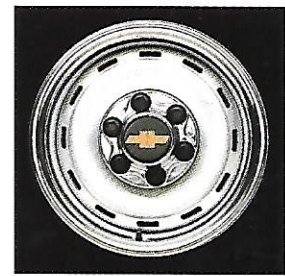


TIRES	BASE	LS	LT
C1500: P235/75R-15 all-season steel-belted radial blackwall	S <sup>6</sup>	S <sup>6</sup>	S <sup>6</sup>
C1500: P235/75R-15 all-season steel-belted radial white outline-lettered	O <sup>6</sup>	O <sup>6</sup>	O <sup>6</sup>
C1500: LT245/75R-16E all-season steel-belted radial blackwall	O <sup>13</sup>	O <sup>13</sup>	O <sup>13</sup>
C2500: LT245/75R-16E all-season steel-belted radial blackwall	S	S	S
K1500: P245/75R-16 all-terrain steel-belted radial blackwall	S <sup>6</sup>	S <sup>6</sup>	S <sup>6</sup>
K1500: P245/75R-16 all-terrain steel-belted radial white outline-lettered	O <sup>6</sup>	O <sup>6</sup>	O <sup>6</sup>
K1500: LT245/75R-16C on- /off-road steel-belted radial blackwall	O <sup>6</sup>	O <sup>6</sup>	O <sup>6</sup>
K1500: LT245/75R-16C on- /off-road steel-belted radial white outline-lettered	O <sup>6</sup>	O <sup>6</sup>	O <sup>6</sup>
K1500: LT245/75R-16E all-season steel-belted radial blackwall	O <sup>13</sup>	O <sup>13</sup>	O <sup>13</sup>
K1500: LT245/75R-16E on- /off-road steel-belted radial blackwall	O <sup>13</sup>	O <sup>13</sup>	O <sup>13</sup>
K2500: LT245/75R-16E all-season steel-belted radial blackwall	S	S	S
K2500: LT245/75R-16E on- /off-road steel-belted radial blackwall	O	O	O
Spare Tire: full-size, on steel wheel (mounted inside; includes color-keyed carpeted cover with LS and LT)	S	S	S

- 1 Includes front bumper guards with optional diesel engine.
- 2 Not available with California emissions.
- 3 Optional on K1500 4x4 only; standard on K2500 4x4 models; dark argent or body color, depending on exterior color selected.
- 4 Requires optional bucket seats on K1500 4x4 models.
- 5 Requires RPO ZQ3 Convenience Group — Tilt-Wheel™ steering column and electronic speed control.
- 6 Requires gasoline engine.
- 7 Optional dual batteries (RPO TP3) are recommended on 4x4 models with standard Vortec 5700 V8 engine.
- 8 Standard on all models except C/K1500 with gasoline engine.
- 9 Requires Z82 Trailering Special Equipment.
- 10 Requires 4.10 rear axle on C/K2500 models with Vortec 5700 V8.
- 11 7,700-lb. GVWR with optional diesel engine.
- 12 8,050-lb. GVWR with optional diesel engine.
- 13 Requires 6.5 Liter Turbo-Diesel V8 engine.
- 14 Included with LS and LT trim on C/K2500 models and on C/K1500 Series models with optional 6.5 Liter Turbo-Diesel V8 engine.



**Steel Wheel**  
15" (2WD) Or 16" (4x4).  
Standard on Suburban with Base trim. Silver-painted with black center cap (4x4 wheel shown).



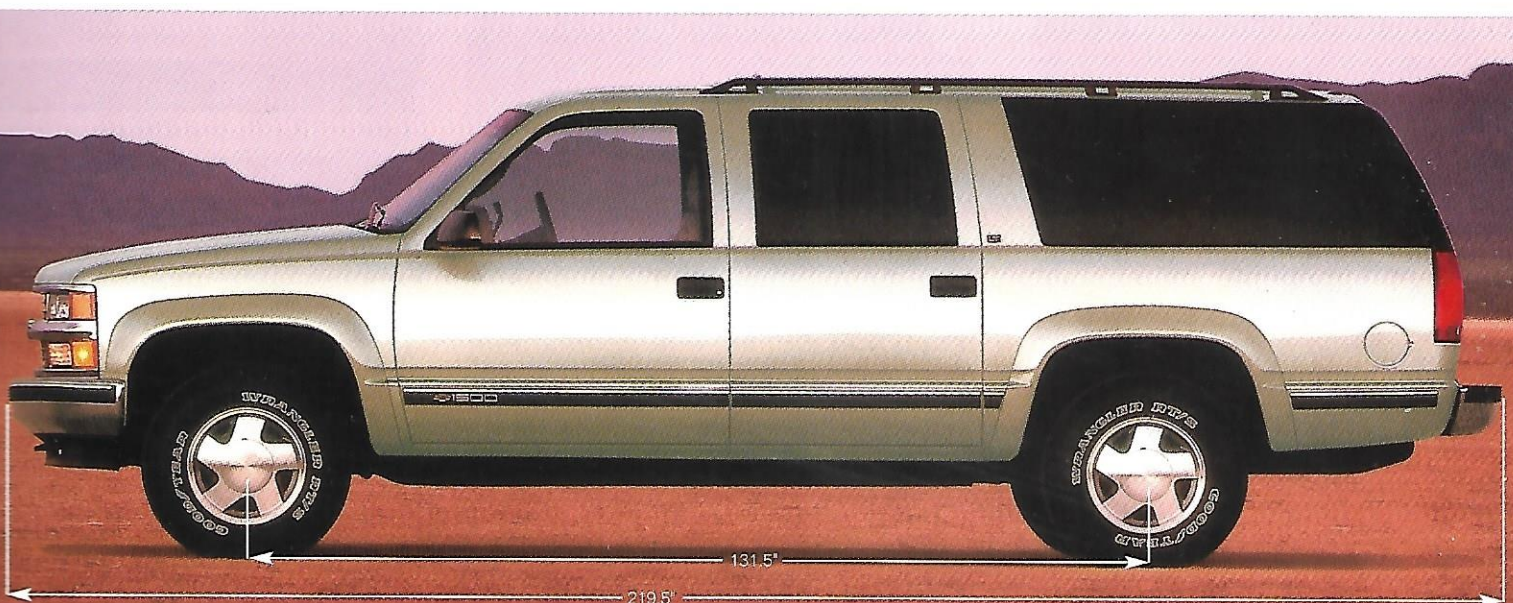
**Rally Wheel Trim**  
15" (2WD) Or 16" (4x4).  
Optional on Suburban with Base trim.<sup>14</sup> Silver-painted with bright center cap and bright trim ring (4x4 wheel shown).



**16" Cast-Aluminum Wheel (4x4).<sup>6</sup>**  
Included on K1500 4x4 with LS and LT trim. Optional (RPO PF4) on K1500 4x4 with Base trim.



**15" Cast-Aluminum Wheel (2WD).<sup>6</sup>**  
Included on C1500 2WD with LS and LT trim. Optional (RPO N90) on C1500 2WD with Base trim.





## Option Packages

## Buyer's Guide — Interior Standard And Optional Features.

These convenient option packages make it easy to tailor Suburban to your specifications. Just let your dealer know which package you prefer.

PREFERRED EQUIPMENT GROUP	BASE 1SA	LS 1SB	LT 1SC
Base trim	■		
LS trim		■	
Radio: ETR AM/FM stereo with digital clock, cassette player; includes automatic tone control, speed-compensated volume, preset-scan, auto-reverse, music search, TheftLock and enhanced performance speaker system		■ <sup>1</sup>	
Air conditioning, front and rear (with dual controls)		■	■
Heater, auxiliary rear-passenger		■	■
Remote Keyless Entry		■	■
Power driver seat, 6-way		■	■
LT trim			■
60/40 split-bench front seat with Custom Leather seating surfaces			■ <sup>2</sup>
Radio: ETR AM/FM stereo with digital clock, cassette player and compact disc player; includes automatic tone control, speed-compensated volume, preset-scan, auto-reverse, music search, TheftLock and enhanced performance speaker system			■

■ — Included in Preferred Equipment Group.

### COMFORT AND SECURITY PACKAGE (RPO ZM9)

REQUIRES LT TRIM AND OPTIONAL HIGH-BACK BUCKET SEATS WITH CUSTOM LEATHER SEATING SURFACES. INCLUDES:

- Heated driver and front-passenger seats
- 6-way power passenger seat (6-way power driver seat included with LT trim)
- Carpeted color-keyed floor mats, front and rear
- Carpeted/vinyl reversible rear cargo mat
- LH and RH heated, self-dimming power exterior mirrors
- HomeLink programmable 3-channel transmitter
- 46mm Bilstein shock absorbers.

**NOTE:** No deletions from this package are allowed. Optional dual batteries (RPO TP3) are recommended on 4x4 models with standard Vortec 5700 V8 engine (except K1500 model with Vortec 5700 V8 and California emissions).

INTERIOR FEATURES	BASE	LS	LT
S — Standard with trim level. O — Optional.			
Air bags, Next Generation driver and right front-passenger	S	S	S
Air conditioning:			
— front (with CFC-free refrigerant)	O	—	—
— front and rear, with dual controls (with CFC-free refrigerant)	O <sup>3</sup>	S	S
Convenience Group:			
Tilt-Wheel™ steering column and electronic speed control	O	S	S
Floor covering:			
— embossed vinyl, two-piece black molded floor mat	S	—	—
— full color-keyed carpeting with vinyl color-keyed front and rear floor mats	—	S	S
Floor mats, front and rear, color-keyed, carpeted; includes reversible rear cargo mat	—	O	O <sup>4</sup>
Glass:			
— Solar-Ray, light-tinted: all windows	S	—	—
— Solar-Ray deep-tinted: rear-door, rear-side and rear-window	O	S	S
Heater, auxiliary rear-passenger	O <sup>3</sup>	S	S
Jack, mechanical: with wheel wrench mounted on driver side behind rear-row seat (includes a pair of work gloves)	S	S	S
Lights: passenger- and cargo-area dome lights with door-actuated switches and illuminated entry, front/rear map lights, footwell lamps and underhood lamp	S	S	S
Locking system: Remote Keyless Entry	—	S	S
Locking system: single two-sided key for ignition and all doors (and liftglass/dropgate, when so equipped)	S	S	S
Power door locks: includes rear lock/unlock switch for all doors; mounted on inside RH rear pillar	S	S	S
Power windows: with driver's Express-Down	—	S	S
Rear-window defogger, electric (with rear panel doors)	O <sup>5</sup>	S	S
Rear-window wiper/washer with electric defogger (with rear liftglass/dropgate <sup>6</sup> )	O <sup>5</sup>	S	S
Safety belts: adjustable height for driver and right-front passenger	S	S	S
Scotchgard™ protection: on carpeting, cloth seats and cloth door trim panels	—	S	S

INTERIOR (contd.)	BASE	LS	LT
Sunshades:			
— padded cloth: color-keyed, with LH storage strap and RH vanity mirror	S	—	—
— padded cloth: color-keyed, with extenders and illuminated mirrors; LH includes storage strap	—	S	S
Tie-downs, cargo: four	S	S	S
Trim panels, door:			
— color-keyed molded, with armrests and red reflectors; front doors include map pockets	S	—	—
— color-keyed molded, with armrests, cloth inserts, carpeted lower areas and lighted red/white reflectors; front doors include map pockets	—	S	S
Trim panels, rear load door and sidewall:			
— black composite fiber	S	—	—
— color-keyed cloth	O <sup>7</sup>	S	S

### INSTRUMENT PANEL/CONTROLS

	BASE	LS	LT
Cigarette lighter, with lighted ashtray	S	S	S
Cup holders, 2 slide-out, in-dash	S	S <sup>8</sup>	S <sup>8</sup>
Gauges, analog-type: include speedometer, tachometer, trip odometer, fuel level, voltmeter and oil pressure	S	S	S
Glove box: bin type, with light	S	S	S
Heater and defroster: with front side-window defoggers	S	S	S
Mirror, inside rearview: day/night	S	—	—
Mirror, inside rearview: self-dimming electrochromic, with electronic integral 8-point compass and outside temperature display	—	S	S
Passlock® vehicle theft-deterrent system	S	S	S
Power outlets, auxiliary electric: 2 (covered)	S	S	S
Steering wheel, includes full-floating center pad horn-blow feature:			
— simulated leather	S	—	—
— leather-wrapped	—	S	S
Warning tone: key-in-ignition and headlamps-on	S	S	S

### SOUND SYSTEMS BY DELCO ELECTRONICS

**NOTE:** All Suburban sound systems include a Delco Electronics ETR (Electronically Tuned Receiver AM/FM stereo and digital clock).

	BASE	LS	LT
ETR AM/FM stereo with preset-scan	S	—	—
ETR AM/FM stereo with preset-scan and cassette player with auto-reverse	O	—	—



AVAILABILITY	BASE	LS	LT
<b>AVAILABILITY</b> <b>ELCO ELECTRONICS (contd.)</b> M/FM stereo with cassette player, includes automatic tone control, radio-compensated volume, auto-scan, auto-reverse, preset search and TheftLock	-	S	-
M/FM stereo with compact disc player, includes automatic tone control, radio-compensated volume, random select, CD-in play/ radio switching and TheftLock	-	O	-
M/FM stereo with cassette player and compact disc player, includes automatic tone control, radio-compensated volume, directional seek, CD random select, CD- or cassette tape-in radio switching and TheftLock	-	O	S
Speakers: 4 (1 in each door and headliner at rear of body)	S	-	-
Audio system: enhanced performance: with eight premium speakers (2 in each front door, each rear door and 2 in headliner at rear of body)	-	S	S

AVAILABILITY	BASE	LS	LT
<b>AVAILABILITY</b> Full-bench, passenger seat — vinyl trim	S	-	-
60/40 split-bench passenger seat with recliners, storage armrest map strap, writing tray and coin holder Custom Cloth trim with Custom Leather seating surfaces	-	S <sup>2</sup>	-
High-back reclining bucket seats with floor and overhead center consoles Custom Cloth trim with Custom Leather seating surfaces	-	O	-
Row 3-passenger 60/40 split-folding bench seat includes adjustable height safety belts and comfort guides for outboard passengers.	-	-	O
with 3-passenger rear-row bench seat	O <sup>3</sup>	S	S
without 3-passenger rear-row bench seat	O <sup>3</sup>	O	O
Adjustment, power lumbar: driver and right front-passenger	-	S	S
Driver: power 6-way	-	S	S

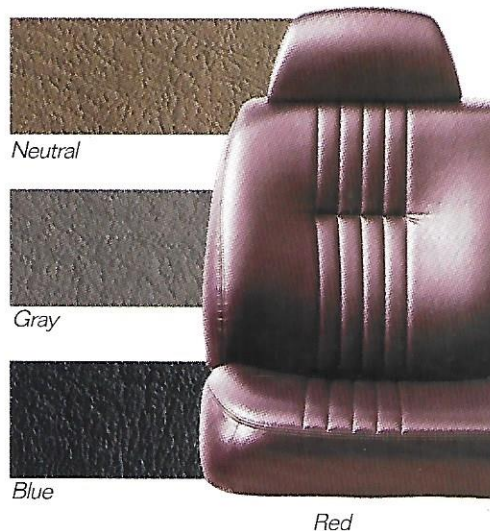
Trade allowed.  
 Upgrade to optional reclining front high-back bucket seats.  
 Includes cloth covered rear quarter trim.  
 Included with ZM9 Comfort and Security Package.  
 Requires optional air conditioning.  
 Charge option.  
 Consult your dealer for availability and restrictions.  
 Flip-in console cup holder is included with the optional  
 front bucket seats' center console.

COLOR AVAILABILITY	INTERIOR COLORS			
	NEUTRAL	BLUE	GRAY	RED
Onyx Black	■		■	■
Indigo Blue Metallic	■	■	■	
Dark Copper Metallic	■		■	
Sunset Gold Metallic	■			
Medium Charcoal Gray Metallic		■	■	■
Meadow Green Metallic	■		■	
Light Pewter Metallic	■	■	■	■
Dark Carmine Red Metallic	■		■	■
Victory Red	■		■	■
Summit White	■	■	■	■

*Custom Leather Trim.\**  
 Included with LT trim.



*Vinyl Trim.*  
 Included with Base trim.



*Custom Cloth Trim.*  
 Included with LS trim.



\*Leather on seating surfaces only.



*Genuine Customer Care.*








# Never Travel Alone.

## Vehicle Limited Warranty

Warranty is for GM vehicles registered in the United States. Please see your Chevrolet dealer for complete terms and conditions of this New Vehicle Limited Warranty.

## What Is Covered For 3 Years Or 36,000 Miles:\*

-  The complete vehicle  
Sheet-metal coverage:  
■ Corrosion coverage  
■ Rust-through coverage†
-  Tires  
Repairs made to correct any vehicle defect
-  Towing to your nearest Chevrolet dealership  
No charge for most warranty repairs.

\*Whichever comes first. †Six years or 100,000 miles, whichever comes first.

## Courtesy Transportation



Customers who purchase or lease a Chevrolet Suburban are eligible for Courtesy Transportation when their vehicle is left at a participating dealership. Services covered under the 3-year/36,000-mile New Vehicle Limited Warranty. Courtesy Transportation, at participating dealers only, may include shuttle service, expense reimbursement or, if the repair requires the vehicle to stay at the dealership overnight, vehicle rental. Actual services may vary at the election of the participating dealer. See your dealer for details.

## Roadside Assistance\*

Roadside Assistance service is provided 24 hours a day, 7 days a year. Roadside Assistance can assist with minor mechanical problems over the phone or coordinate a service through skilled and professional service providers.

\*Roadside Assistance membership is free. Some services may incur costs. Courtesy Care is available to retail, rental lease and corporate lease customers operating 1994 and newer Chevrolet vehicles for a period of 3 years/36,000 miles. All Courtesy Care services' associated costs must be prearranged by Chevrolet Roadside Assistance or dealer service management and must be driver-initiated. Basic Care and Courtesy Care are not part of or included in the coverage provided by the New Vehicle Limited Warranty. Chevrolet reserves the right to modify or discontinue Basic Care and Courtesy Care at any time. See your dealer for complete details of the Chevrolet Roadside Assistance Program.

## Basic Care Provides:

-  Toll-free access 1-800-CHEV-USA  
Basic over-the-phone technical advice
-  Free towing to nearest dealer for warranty repairs  
Dealer services at a reasonable cost (i.e., wrecker services, locksmith/key service, glass repair, etc.).

## Basic Care, Which Applies For 3 Years/36,000 Miles, Provides:

-  Basic Care services  
Free fuel delivery
-  Free locksmith/key service (when keys are lost on the road or locked inside)  
Free non-warranty towing
-  Free flat tire change service  
Free jump start.

# Additional Information.

## Please Contact Us...

For any additional information on 1999 Chevrolet car or truck products, call 1-800-950-2438 or visit us on the Internet at <http://www.chevrolet.com>.

## Customer Assistance Center.

The Chevrolet Customer Assistance Center has a special toll-free number: 1-800-222-1020. It puts you in contact with Chevrolet Specialists who can handle any product or service question or concern you may have with your new Suburban.

## SMARTLEASE By GMAC.

SMARTLEASE by GMAC makes it easy to enjoy the excellence of Suburban. With SMARTLEASE, qualified customers can be approved in about one hour, and you'll enjoy low SMARTLEASE monthly payments. Plus, SMARTLEASE offers you choices at the end of your lease. You can either buy your Suburban at a price guaranteed up front, or return your truck with no other obligations — providing the terms of the lease have been met. For more information about SMARTLEASE or any of the other quality GMAC financing options, see your Chevy dealer or call 1-800-32-SMART.

## Turn Plastic Into Steel With The GM Card®.

The GM MasterCard® gives you an important financial advantage on your next purchase or lease of a GM vehicle. Use The GM Card for purchases and you'll receive up to 5% of that purchase amount in GM Card Earnings. Your GM Card Earnings are over and above any other discount or incentive. To request your GM Card, call 1-800-8GM-CARD.

## The GM Mobility Program.

Chevrolet recognizes the importance of mobility to everyone's life and, therefore, offers financial assistance to persons with disabilities through the General Motors Mobility Program. This program can provide up to \$1,000 reimbursement toward the cost of aftermarket mobility adaptive equipment for drivers or passengers, \$200 of which may be applied towards a siren detector for drivers who are deaf or hard-of-hearing. For details and free resource information, call: 1-800-323-9935. (TTY users: 1-800-833-9935).

## Updated Service Information.

Chevrolet regularly sends its dealers useful service bulletins about Chevrolet products. Chevrolet monitors product performance in the field. We then prepare bulletins for servicing our products better. Now you can get these bulletins, too. Ask your dealer or, for ordering information, call toll free: 1-800-551-4123.



## Assembly.

Chevrolet trucks and their components are assembled or produced by different operating units of General Motors, its subsidiaries or suppliers to GM worldwide. We sometimes find it necessary to produce Chevrolet trucks with different or differently sourced components than originally scheduled. Since some options may be unavailable when your vehicle is assembled, we suggest that you verify that your vehicle includes the equipment you ordered or, if there are changes, that they are acceptable to you.

## Engines.

Chevrolet trucks are equipped with engines produced by different operating units of GM, its subsidiaries or suppliers to GM worldwide.

## Corrosion Protection.

Chevrolet trucks are designed and built to resist corrosion. All body sheet-metal components are warranted against rust-through corrosion for 6 years/100,000 miles (whichever comes first). Application of additional rust-inhibiting materials is not required and none is recommended. See your Chevrolet dealer for terms of this limited warranty.

## GM Protection Plan.

The GM Protection Plan offers service protection in addition to that provided by GM's New Vehicle Limited Warranty. Ask your dealer about it. Coverage available only in the U.S. and Canada.

## A Word About This Brochure.

We have tried to make this brochure comprehensive and factual. We reserve the right, however, to make changes at any time, without notice, in the information contained in this brochure. Since information may have been updated since the time of printing, please check with your Chevrolet dealer for complete details. Chevrolet reserves the right to lengthen or shorten the model year for any product for any reason, or to start and end model years at different times.

*Chevrolet, the Chevrolet Emblem, General Motors, GM, the GM Emblem, Suburban, Silverado, S10, Chevy Express, Astro, Venture, Tahoe, Blazer, Tracker, Passlock, OnStar, 1-800-CHEV-USA, ETR and Solar-Ray are registered trademarks and Chevy, Autotrac and Vortec are trademarks of the General Motors Corporation. SMARTLEASE and GMAC are registered trademarks of the General Motors Acceptance Corporation. Delco and TheftLock are registered trademarks of the Delco Electronics Corporation. HomeLink is a registered trademark of the Prince Corp. Scotchgard is a trademark of 3M company. © 1998 General Motors Corp. All rights reserved.*

Litho in USA



July 1998



## Exterior Colors

*Onyx Black*



*Indigo  
Blue Metallic*



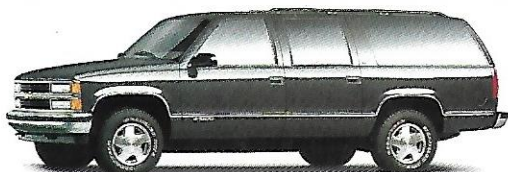
*Dark  
Copper Metallic*



*Sunset  
Gold Metallic*



*Medium Charcoal  
Gray Metallic*



*Meadow  
Green Metallic*



*Light  
Pewter Metallic*



*Dark Carmine  
Red Metallic*



*Victory Red*



*Summit White*





**LIKE A ROCK.**

*It's more than just a song.*

*They're the words we live by.*

*They mean we build Chevy Trucks to be the most dependable,  
longest-lasting trucks on the road.\**

*Trucks that carry that responsibility as easily as they carry a load of lumber.*

*Built rugged to take what the world can dish out.*

*Built dependable, because we know people are counting on us.*

*Built for the people who get the job done, day after day.*

*There's a quiet satisfaction in that.*

*And a whole lot of pride.*

*Because we don't just build trucks to carry people and their loads.*

*We build the trucks that carry their dreams.*

\*Dependability based on longevity: 1981-1997 full-line light-duty truck company registrations. Excludes other GM divisions.

**CHEVY TRUCKS**



**LIKE A ROCK**

[www.chevrolet.com](http://www.chevrolet.com)