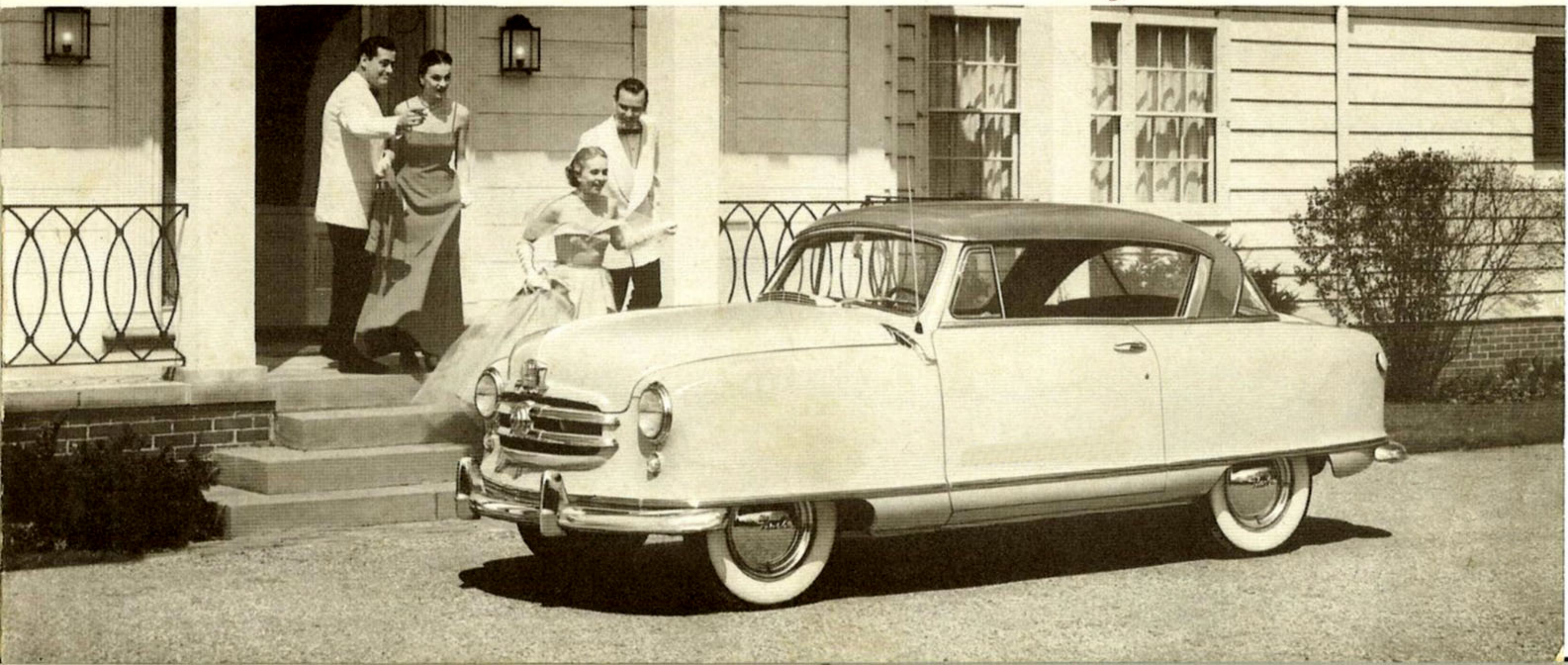


Presenting America's Newest Hardtop Convertible

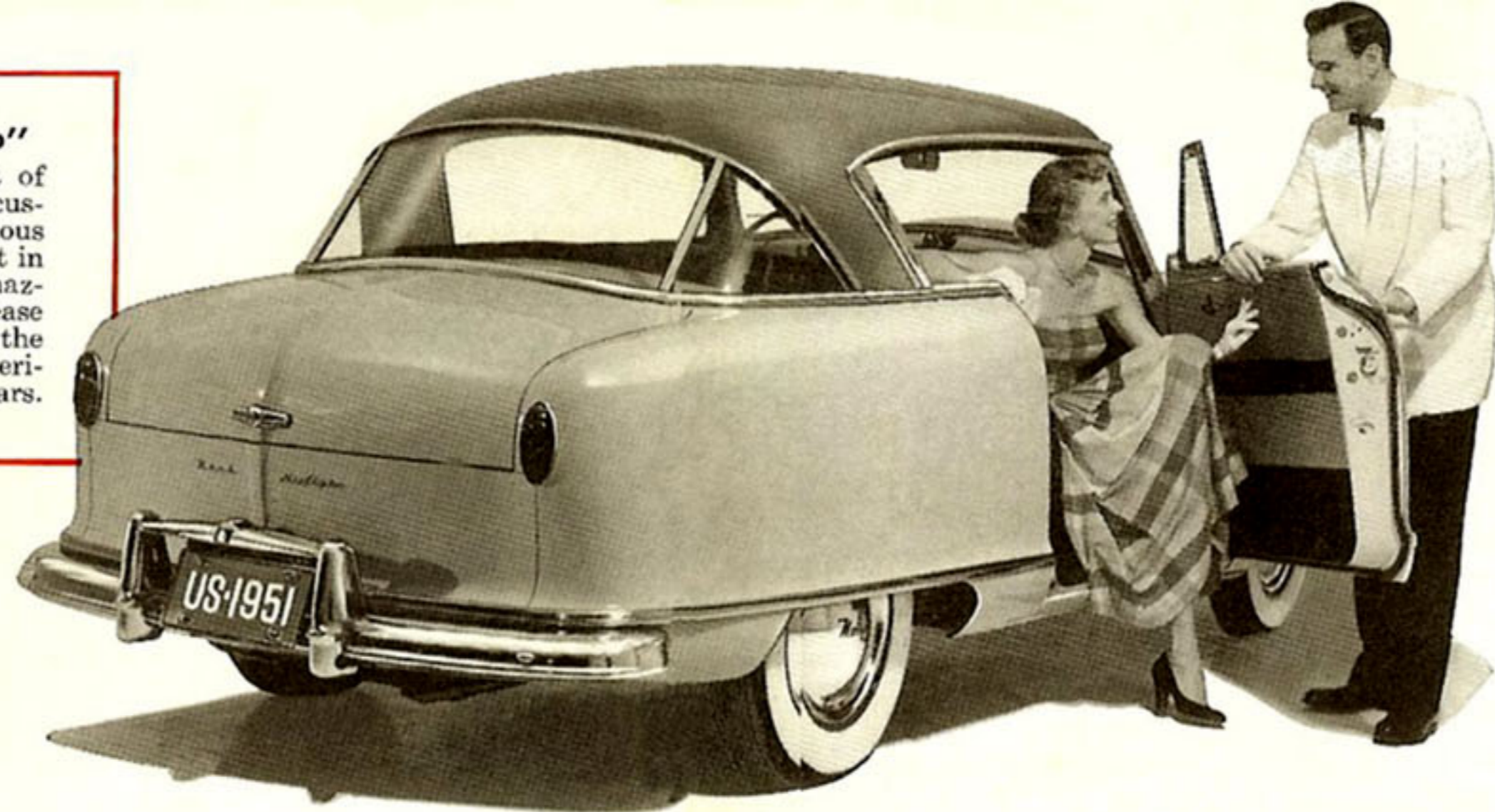
The Rambler "Country Club"



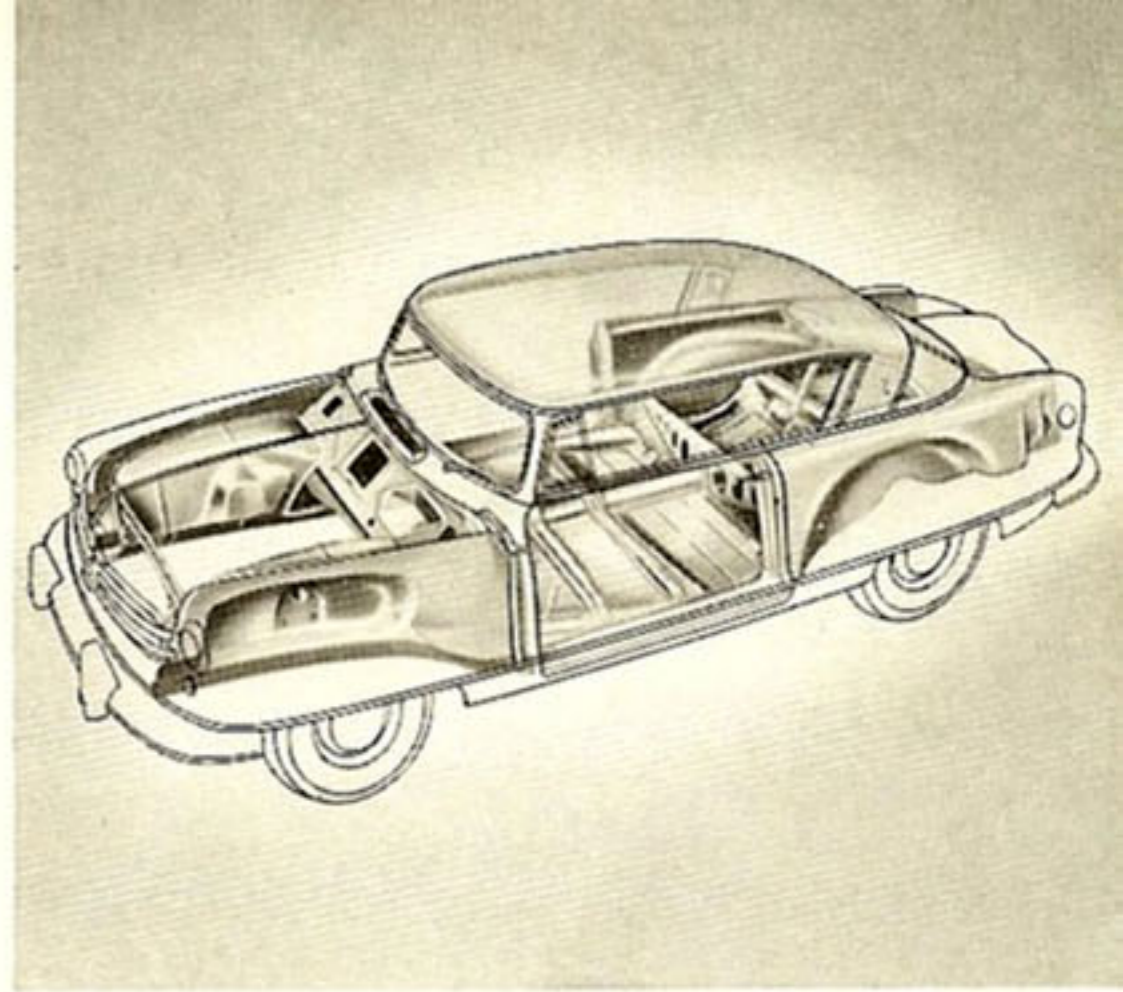


The new Nash Rambler Country Club gives you the airiness and smart looks of a convertible combined with the all-weather comfort and safety of a conventional sedan. Quick as a wink, wide windows roll down easily . . . and the sides are wide open from front to rear for sun and fresh air fun. Note the clever "cut-back" of the rear side pillars that gives new "eye-level" visibility—a better all 'round view.

Meet the "Country Club"
The newest and smartest of hard top convertibles . . . a custom sports sedan . . . luxurious beyond words . . . compact in size . . . and with all that amazing performance, handling ease and economy that's made the Nash Rambler one of America's most popular new cars.



It takes it all! Yes, there's a lot of luggage space in the Country Club . . . space for bags and packages and sports equipment. No need to clutter up the passenger compartment when the family travels.

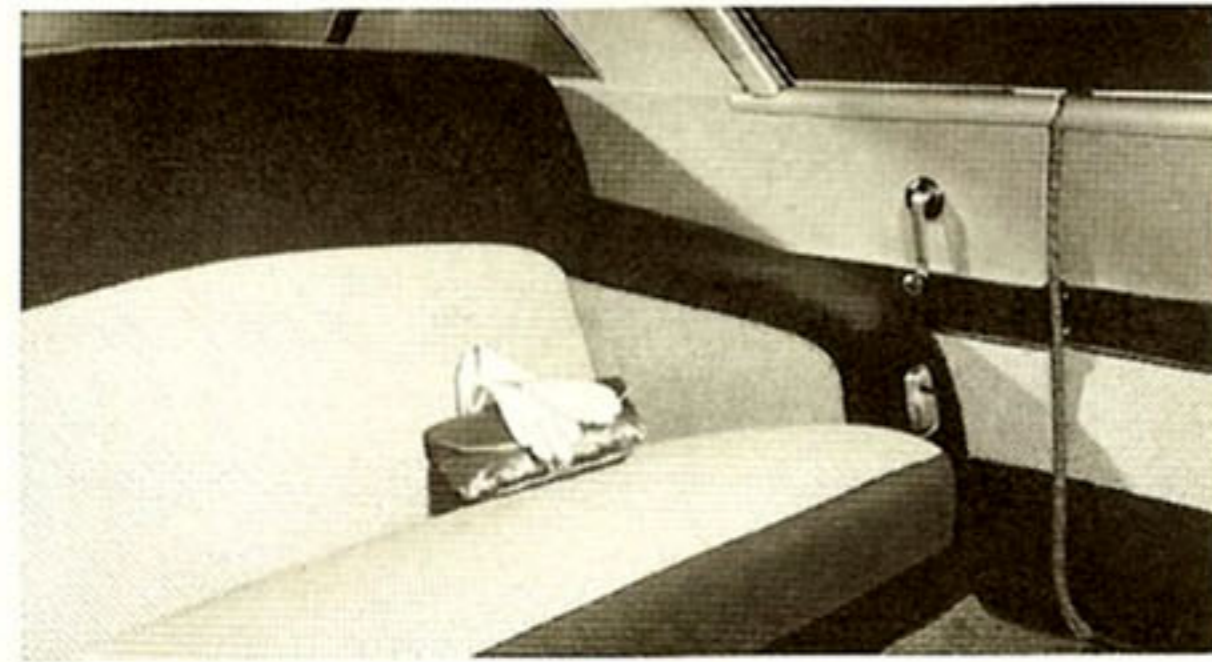


Exclusive Airlfite Construction makes possible this new type of car. Frame and body welded into one unit of terrific strength, greater safety and double rigidity forever free of body-bolt rattles and squeaks.

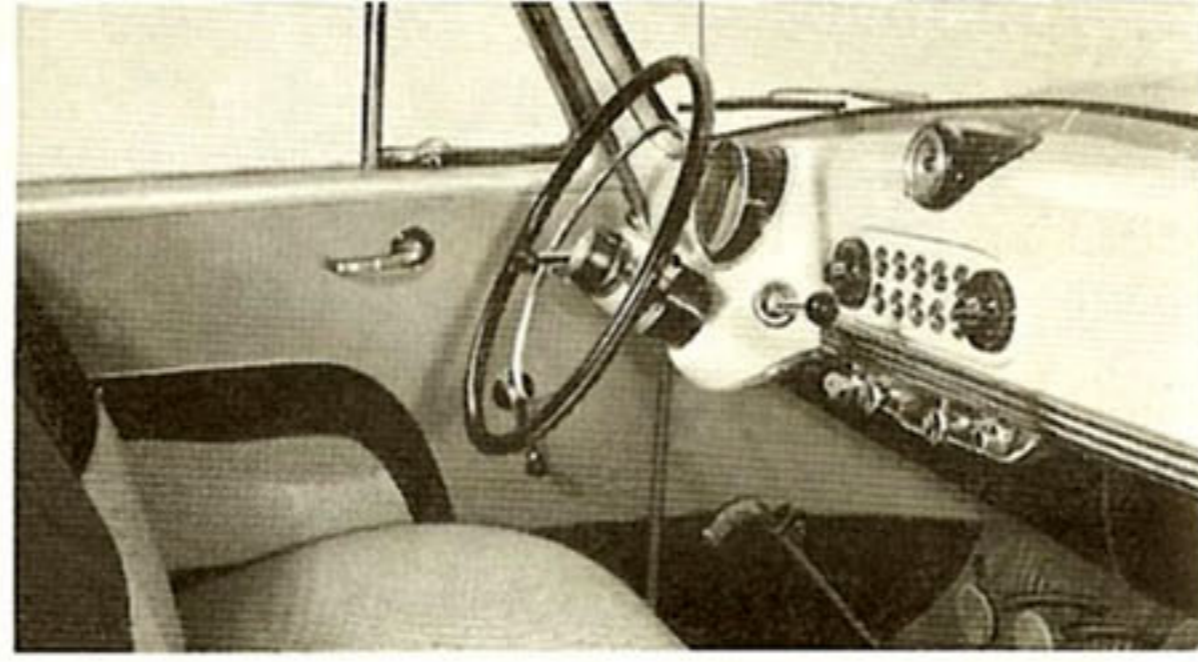
You've Never Seen Such *Brilliant Styling* . . . Known Such Amazing *Economy and Performance*



You'll enjoy a new thrill with observation-car visibility. Over 17 feet of clear glass . . . and the wide rear window bends around the sides of the body without interruption of vision. Yet, Nash Airlfite design and construction give you all-around safety and protection.



Here's an invitation to real comfort and riding pleasure! Sink back on these soft foam-rubber cushions, upholstered in genuine needle-point. Look around you for real luxury . . . the reading light, convenient ash trays, beautiful hardware.



That Continental flair! You'll find dozens of new styling and luxury conveniences . . . from the custom steering wheel to the ingeniously divided front seat. Extra wide, comfortable seats, both front and rear, for six people—and more leg-room than you believed possible.



The world-famous "Flying Scot Engine" provides amazing performance and economy with 7.25 to 1 super-compression on regular gasoline! This engine has such exclusive Nash features as Iso-Thermal intake manifold and Uniflo-Jet carburetion.



Here's America's "miles-to-the-gallon" champion! The car that smashed all records for gasoline mileage in the 1951 Mobilgas Economy Run—over all other cars—the Rambler with overdrive covered 840 miles at 31.05 miles a gallon average—at a clip of 40.6 miles an hour!

And included in its **Low Price**—nearly \$300 of Custom Accessories at **No Extra Cost!**

Here's another Rambler bonus—it comes to you completely custom equipped, with fine radio, Weather Eye Conditioned Air System, directional signals, custom steering wheel and upholstery, foam cushions, electric clock, courtesy lights and wheel discs . . . nearly \$300 worth of custom extras at no additional cost to you. There's nothing else to buy! And the price? It's among America's lowest! So drive it—price it—and you'll fall in love with it, too!



The Rambler All-Purpose Sedan



The Rambler Convertible Sedan



The Rambler Greenbrier

Nash Rambler

Airflyte

Specifications

Body—Airflyte Construction, with body-and-frame one solid welded unit. Seating widths at elbow, front 56 in., rear 52½ in. Front seat divided to left of center.

Exterior—Over-all length 176 in. Wheel-base 100 in. Width 73½ in. Height, loaded, 59¾ in. Front tread 53¼ in., rear 53 in. Turning radius 18 ft. 7 in. Road clearance 7¾ in.

Mechanical—L-head, 6-cylinder engine,

172.6 cu. in., 82 h.p. Compression ratio 7.25:1. Four-ring pistons, with steel U-Flex type lower oil ring. Intake manifold sealed in block, with Iso-Thermal temperature control for cooling water. Uniflo-Jet YF type carburetor, with diaphragm type accelerator pump and vacuum economizer. Long-life, squeakless fan belt with triangular cross-section. Coil springs at front, connected between body structure and steering knuckle. Semi-elliptic

rear springs. Hotchkiss drive from rear axle through springs. Super cushion tires, 5.90 x 15. Gas tank 20-gals. Axle ratios: with standard 3-speed transmission 3.77:1; with overdrive 4.1:1, or 4.375:1 (optional).

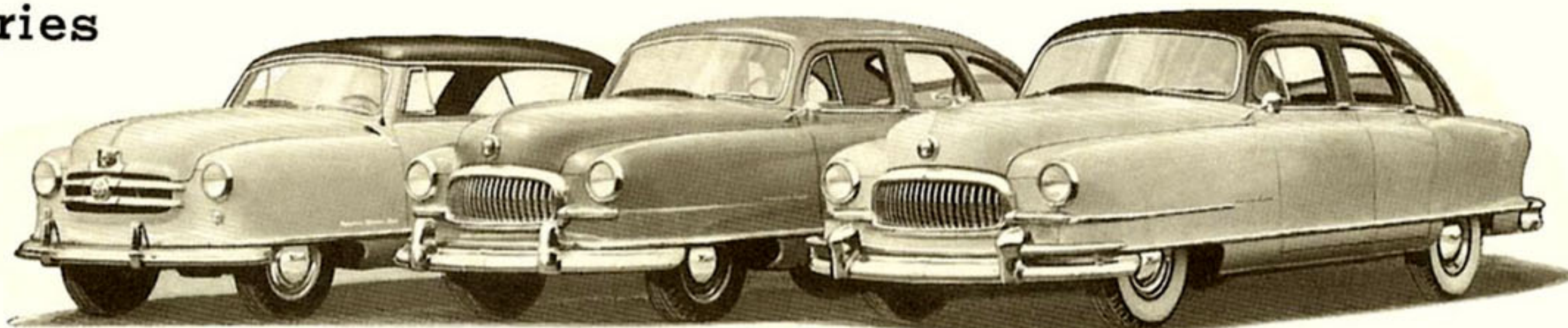
Equipment—Complete with Weather Eye Conditioned Air System, radio and antenna, custom steering wheel and upholstery, foam cushions, directional signals, electric clock, courtesy lights and wheel discs—all included in the low price.

NASH MOTORS, DIVISION OF NASH-KELVINATOR CORP., RESERVES THE RIGHT TO MAKE CHANGES AT ANY TIME, WITHOUT NOTICE, IN SPECIFICATIONS, PRICES OF MODELS, AND ALSO TO DISCONTINUE MODELS.

See ALL 3 Great Series

Nash

Airflyte



RAMBLER

STATESMAN

AMBASSADOR

*Come in
and Drive
it* →

Nash Motor Co., Inc.
3030 North Third Street
Phone CONcord 4-7806
Milwaukee, Wisconsin

315112003 DA