

RAMBLER

STATION WAGONS FOR 1961

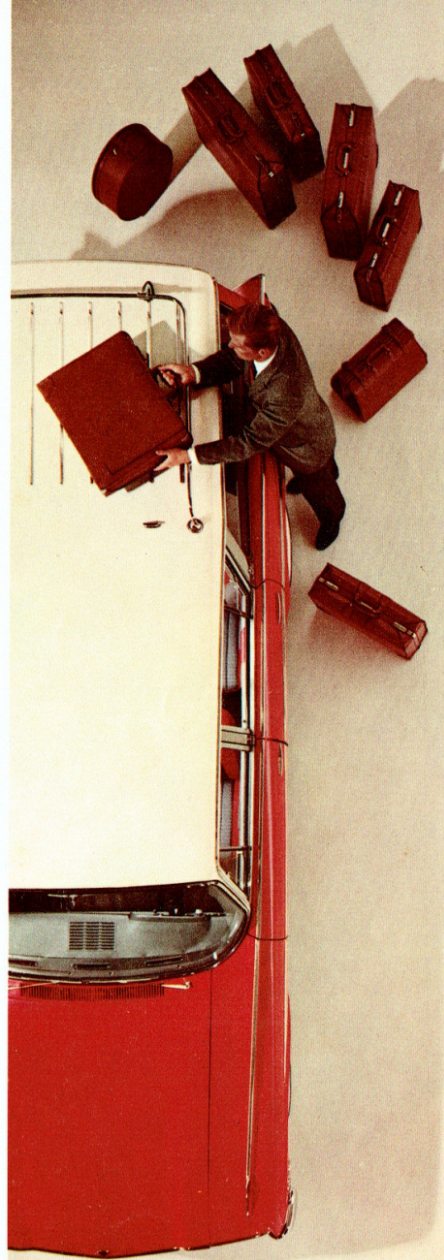


CLASSIC

AMERICAN

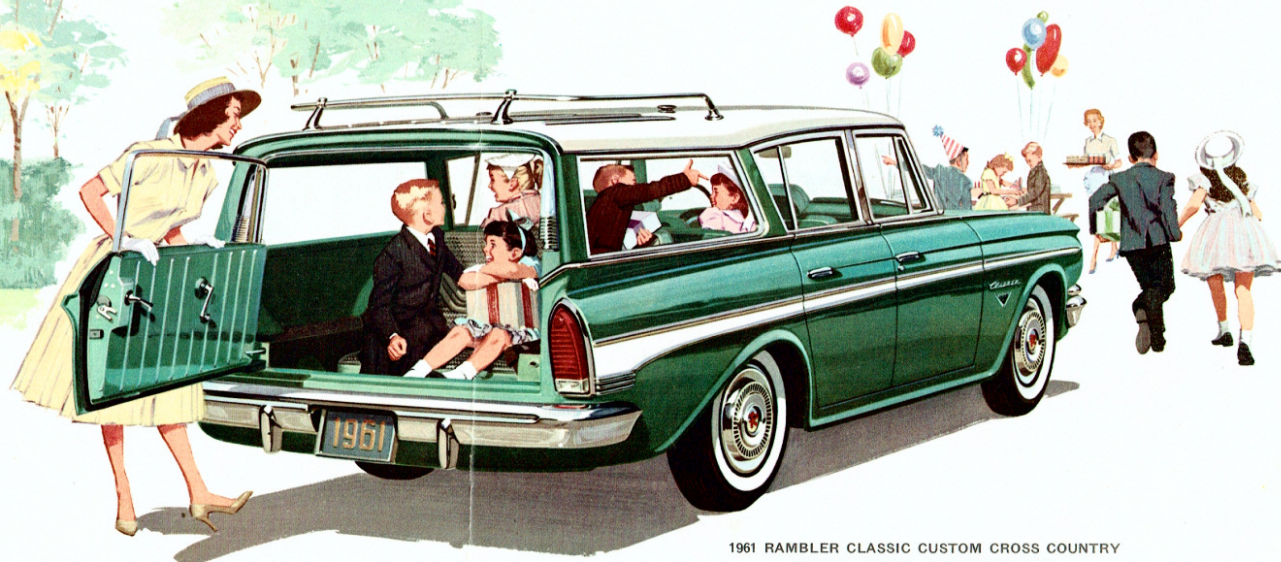
AMBASSADOR

A Star-Studded Line-Up of
Brand New Station Wagons
in Three Distinct Compact Sizes
—Choice of 19 Models



1961 RAMBLER CLASSIC STATION WAGONS

The Rambler Classic Cross Country Station Wagons are another example of the Rambler Idea of true usefulness to the user. Each of the nine distinctive models provide real family living space and generous cargo room.



1961 RAMBLER CLASSIC CUSTOM CROSS COUNTRY
3-SEAT, 5-DOOR STATION WAGON

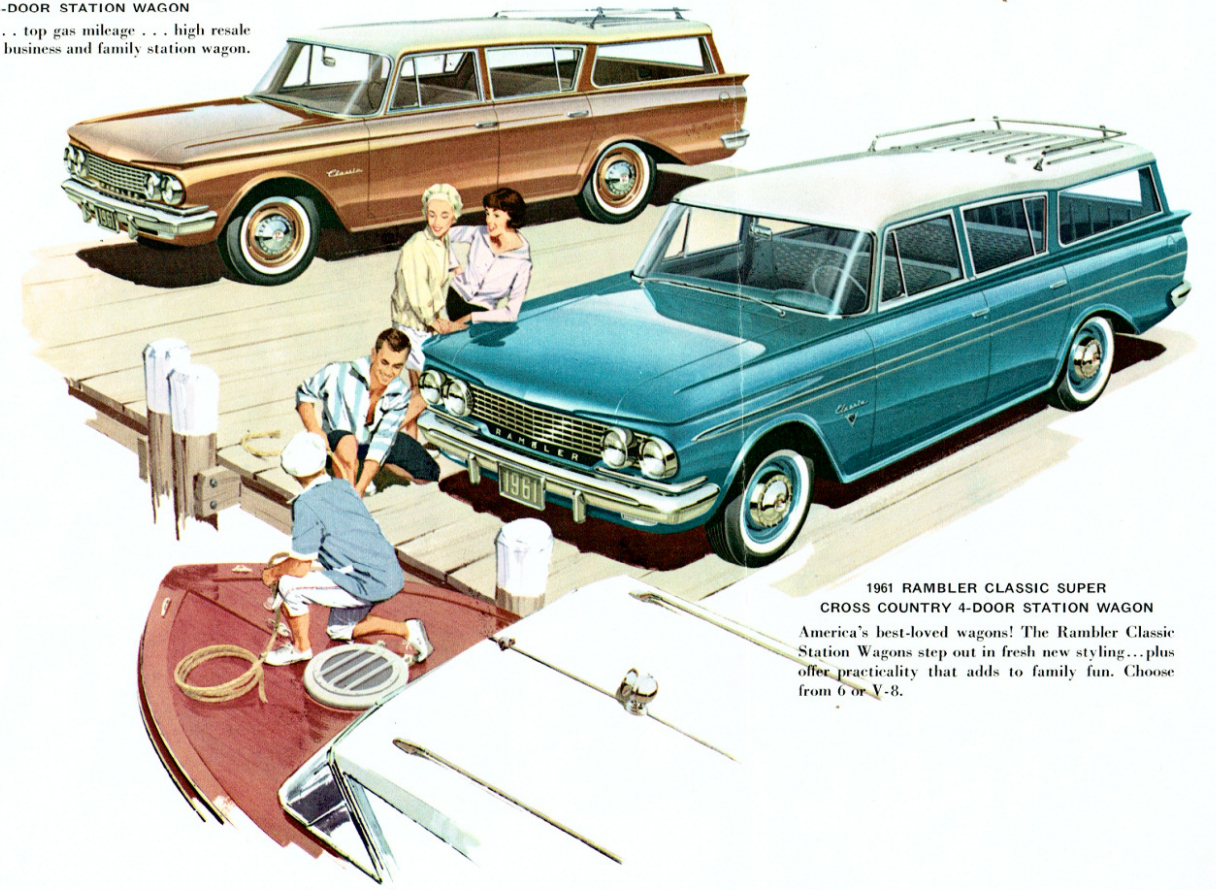
The tail-gate is a fifth door that swings wide to permit easy entrance and exit to the rear-facing third seat or convenient cargo loading when the third seat is folded down. Available in Custom and Super 6 and V-8 models. Fifth door is also available as an extra-cost option on all 1961 Rambler Classic two-seat station wagon models.



THE RAMBLER IDEA! Lots of cargo space for every family need. Even room for a boat and outboard motor in the 80 cubic foot capacity cargo area. Roof-Top Travel Rack carries additional luggage . . . a standard feature.

1961 RAMBLER CLASSIC 6 DELUXE CROSS
COUNTRY 4-DOOR STATION WAGON

Low first cost . . . top gas mileage . . . high resale value. A perfect business and family station wagon.



1961 RAMBLER CLASSIC SUPER
CROSS COUNTRY 4-DOOR STATION WAGON
America's best-loved wagons! The Rambler Classic Station Wagons step out in fresh new styling . . . plus offer practicality that adds to family fun. Choose from 6 or V-8.



1961 RAMBLER CLASSIC CUSTOM 4-DOOR CROSS COUNTRY
Six-passenger, 30 cubic feet of cargo space. Available with 6 or V-8 engines.



THE RAMBLER IDEA! Lots of cargo space for every family need. Even room for a boat and outdoor motor in the 30 cubic foot capacity cargo area. Roof-Top Travel Rack carries additional luggage . . . a standard feature.

1961 RAMBLER CLASSIC 6 DELUXE CROSS COUNTRY 4-DOOR STATION WAGON
Low first cost . . . top gas mileage . . . high resale value. A perfect business and family station wagon.



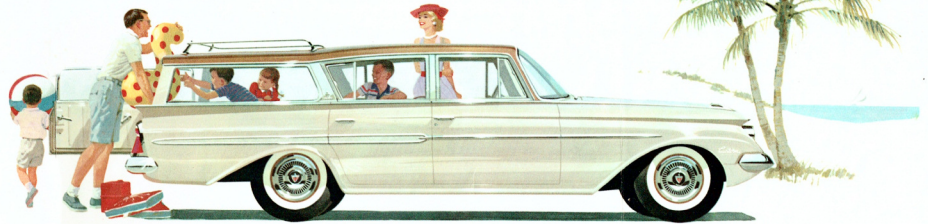
1961 RAMBLER CLASSIC SUPER CROSS COUNTRY 4-DOOR STATION WAGON
America's best-loved wagons! The Rambler Classic Station Wagons step out in fresh new styling . . . plus offer practicality that adds to family fun. Choose from 6 or V-8.

1961 AMBASSADOR V-8 by RAMBLER
CROSS COUNTRY STATION WAGONS

The 1961 Ambassador Cross Country represents the ultimate in station wagon beauty and usefulness to the user. Choose from 2-seat and 3-seat models as your family needs require. The spacious cargo area assures plenty of luggage room.

The compact 117-inch wheelbase makes parking and garaging easy.

The superb 250 and 270 horsepower Ambassador V-8 engines provide high power-to-weight ratios, assuring exceptional performance and outstanding economy under all operating conditions.



1961 AMBASSADOR V-8, 3-SEAT, 5-DOOR CROSS COUNTRY STATION WAGON, CUSTOM or SUPER MODELS



1961 AMBASSADOR V-8 CUSTOM CROSS COUNTRY STATION WAGON



1961 AMBASSADOR V-8 SUPER CROSS COUNTRY STATION WAGON

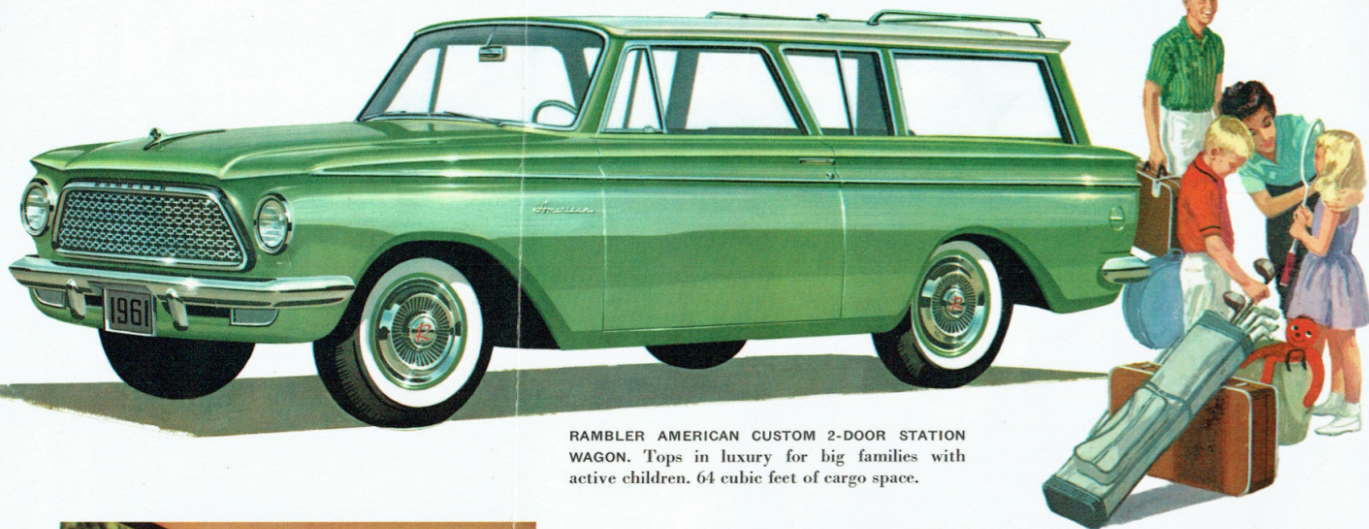
ROLL-DOWN REAR WINDOW that disappears into the full-lowering tail-gate is standard on all Ambassador 2-seat station wagons. Tail-gate lowers flush with the cargo floor for easy loading.



SMART ROOF-TOP TRAVEL RACK—another Rambler exclusive gives additional carrying capacity—adds to the attractive appearance of all Ambassador station wagons for 1961.

1961 RAMBLER AMERICAN STATION WAGONS

Meet the new American Beauty station wagon! Six versatile models to meet every family work and fun requirement. Only 173.1 inches of over-all length for easiest parking and garaging. Yet, the all-new American offers full family room for six and 64 cubic feet of cargo space. Smart Roof-Top Travel Rack gives additional luggage capacity on Super and Custom models. Save when you buy, save every mile you drive. America's Economy King—90 or 125 H.P.



RAMBLER AMERICAN CUSTOM 2-DOOR STATION WAGON. Tops in luxury for big families with active children. 64 cubic feet of cargo space.



For 1961, Rambler American presents a whole new array of rich station wagon interiors. Choose from newly-styled upholstery weaves and patterns with complementary vinyls. Custom models offer luxurious door-to-door carpeting as standard equipment.



Cargo loading and unloading is even easier with the wider tail-gate opening on 1961 Rambler American Station Wagons. There's lots of room for all your family's gear on the longest trips.



RAMBLER AMERICAN DELUXE 2-DOOR STATION WAGON. The trim beauty that combines compact car economy and maneuverability with station wagon family room.



RAMBLER AMERICAN 4-DOOR STATION WAGON! All-new for 1961! Tops in smart styling and usefulness in the economy compact field. Available in Deluxe, Super and Custom models.

THE 1961 RAMBLERS GIVE NEW MEANING TO STATION WAGON LIVING

Rambler's dedication to the principle of basic excellence is expressed in the many outstanding features and options that mean longer car life, finer performance, greater safety and more all-around station wagon enjoyment.



Optional on 1961 Rambler Station Wagons are adjustable front seats that glide forward and backward individually to give driver and front seat passenger the exact amount of legroom each needs for perfect comfort.



Airliner Reclining Seats adjust to five comfortable positions, including Twin Travel Beds, at the flick of a lever—you can doze while someone else drives. Optional.



Twin Travel Beds help make Rambler Station Wagons ideal for family vacationing. The whole family can sleep in comfort and eliminate hotel costs.



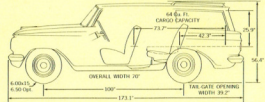
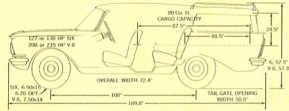
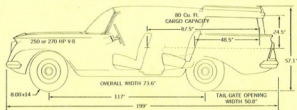
Kiddie's Play Pen is but one of the many uses to which the large cargo area can be put. Children can play the miles away in perfect safety.

1961 RAMBLER STATION WAGONS IN THREE DISTINCT COMPACT SIZES

AMBASSADOR V-8... 2 or 3-SEAT MODELS—The world's leading luxury compact station wagon. Top V-8 performance from the spirited 250 horsepower engine or optional 270 H.P. powerplant. Deep-Coil Ride and 117-inch wheelbase Single-Unit construction give a new concept of handling ease and unsurpassed riding qualities in this luxurious station wagon. A full complement of the most-wanted power options and comfort-convenience items—including individually adjustable front seats with reclining seat backs that convert into Twin Travel Beds—is available.

RAMBLER CLASSIC 6 AND V-8... 2 or 3-SEAT MODELS—For 1961, the Rambler Classic presents America's first Die-Cast Aluminum Engine, proved in more than 2 million miles of testing. 127 H.P. standard. 138 H.P. with optional 2-barrel carburetor. Or if you wish to combine outstanding V-8 performance with Rambler's compact handling and parking ease, choose the 200 H.P. or 215 H.P. Rambler Classic V-8. Both compact Cross Country Station Wagons are on a 108" wheelbase. Nine smartly styled models, including 3-seat models, offer passenger room galore and 80 cubic feet of cargo space.

RAMBLER AMERICAN... 2 or 4-DOOR MODELS—All new in style and features for 1961. This nimble station wagon is tops in fuel economy with lowest first cost. Choice of 90 H.P. L-head or 125 H.P. overhead valve engines. The 173.1" length provides a remarkably short turning radius and unexcelled parking ease. Rugged Single-Unit construction assures lasting freedom from body-bolt squeaks and rattles. Available with Flash-O-Matic, Overdrive or Sycromesh transmissions.



AMERICAN MOTORS, WHOSE POLICY IS ONE OF CONTINUOUS IMPROVEMENT, RESERVES THE RIGHT TO DISCONTINUE OR CHANGE SPECIFICATIONS, MODELS OR PRICES AT ANY TIME WITHOUT INCURRING OBLIGATION.