

**Buick 76 / Regal / Century / Le Sabre Custom / Estate Wagon
Electra / Riviera**



BUICK

Regal

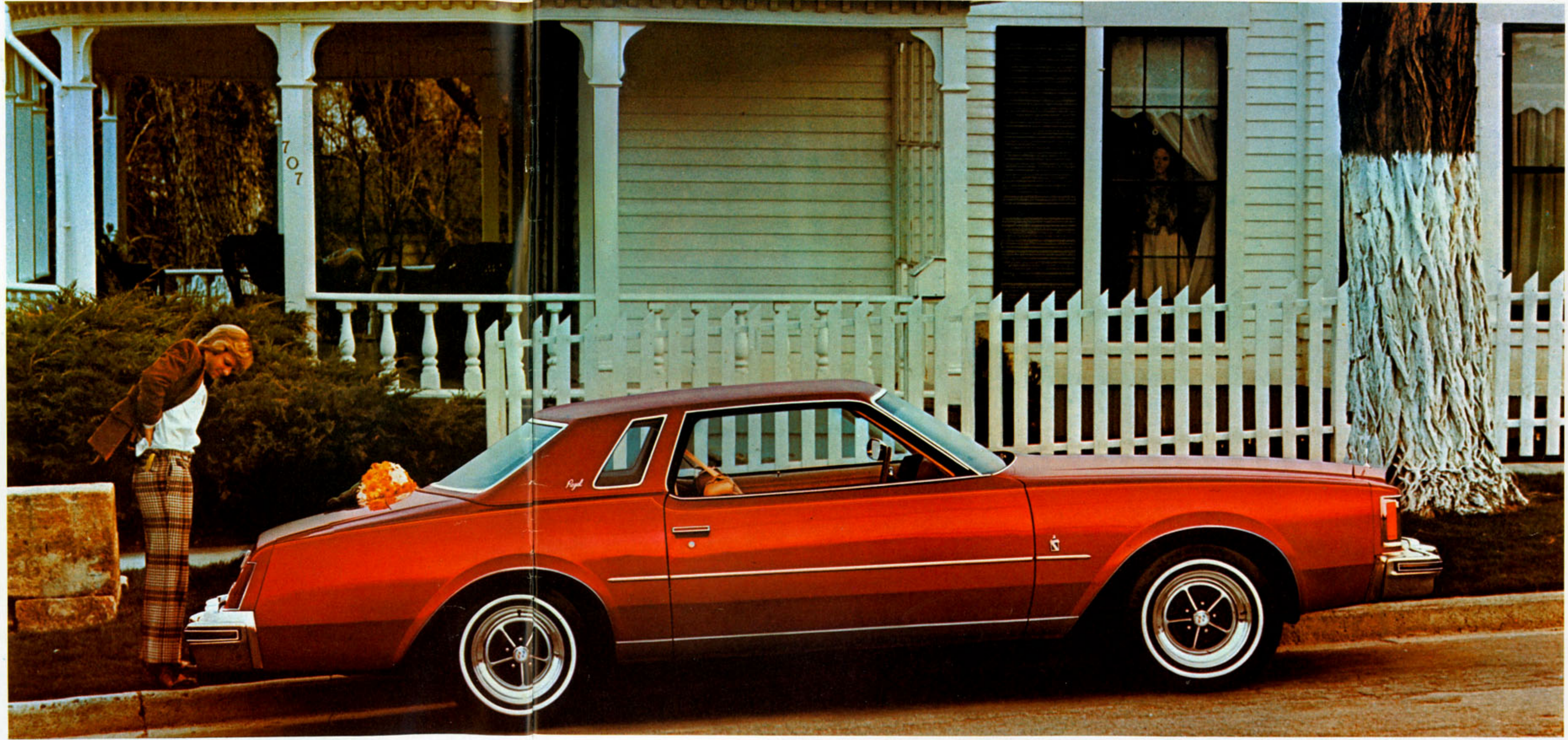
This is the top line intermediate Buick. And it shows. From the new distinctively designed rectangular patterned grille to the deluxe wheel covers. From the stand-up Regal hood crest to the wraparound lighting assembly which includes dual rectangular headlamps, park and turn lamps and front side marker. And from the formal roofline to the rear quarter opera windows on the Coupe. Regal is definitely a cut above the rest.

Let's take a look at what you're getting. The standard engine is a 3.8 litre (231 CID) V6 with High-Energy Ignition which eliminates points and condenser and helps give you fast, sure starts in any

weather. If you'd like, you can get an optional 5.7 litre (350 CID) V8. Radial tires, radial tuned suspension, power front disc brakes, Quick Engine Warm-up System and catalytic converter are all standard.

Regal rides in comfort. With full-foam notchback seats, deluxe steering wheel, full-flow ventilation, armrests all around, deep cut-pile carpeting and insulation for quietness.

Regal for 1976 is an improved edition of a superior automobile. It combines luxury and economy in an exceptional way. Be sure and ask your dealer about the new sun roof option shown on page 4.



Regal Hardtop Coupe

Some of the equipment shown or mentioned is optional at extra cost

Century Century Custom

The 2-door automobile has a bold new look for '76 with two exciting Centurys to fill the bill.

The Century has its own new distinctive styling from grille and rectangular headlamps right along the new, clean side appearance and fastback roofline.

Century Custom looks good and drives even better for '76. There is a formal roofline on the Coupe with quarter opera windows. The 2-door Century Custom is a proud, responsive automobile by anybody's standards.

At bottom is the new two-section Hurst Hatch roof—available on Century Custom and Regal Coupes.



Century Custom Coupe



Century Coupe

Some of the equipment shown or mentioned is optional at extra cost

Regal/Century

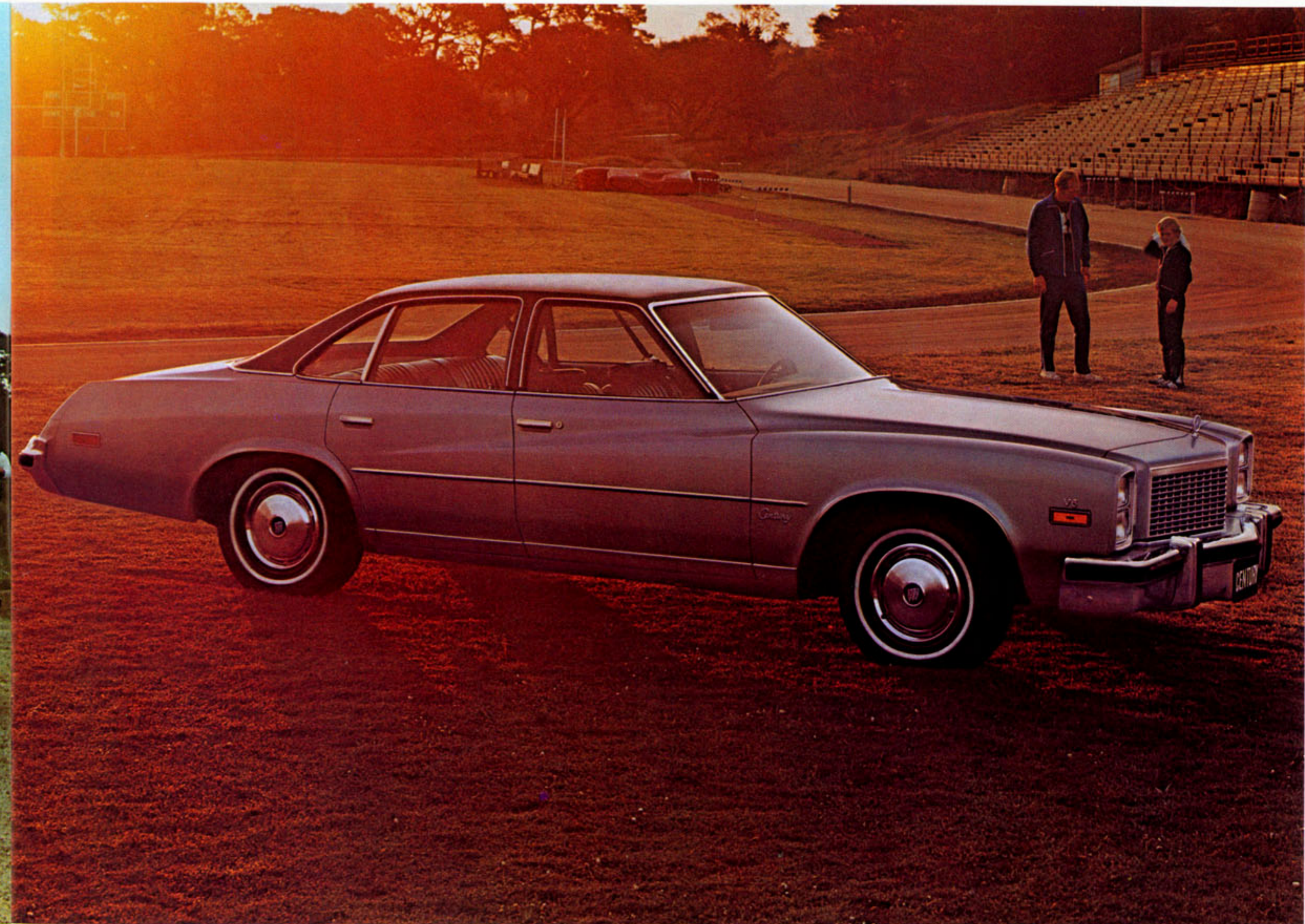
If you appreciate the convenience and luxury of the more formalized 4-door Sedan, then the Buick Century series gives you a comprehensive selection.

No matter which category of Century you choose, each with its own package of standard and optional features, you'll be getting full 4-door comfort and special appearance features which are new this year. These include distinctive new grilles with stacked headlamps, new exterior colors, new interior trims and fabrics and much much more.

Century, Century Custom and Regal. A proud lineup of quality-crafted automobiles.



Top Regal Sedan, below and at right Century Custom Sedan



Century 4-door Sedan

Some of the equipment shown or mentioned is optional at extra cost

Century Special

What else for '76? The Century Special. The economical version in the Buick mid-size field. And this means that this year you can buy a Buick Century and get great price and operating economies. It's powered by a 231 CID V6 with High-Energy Ignition. It has power steering and steel-

belted radial-ply tires. Automatic transmission and power brakes are optional.

Inside you can take your choice of rich cloth or rugged vinyl bench seats. Full-flow ventilation, full-foam construction seat design, front and rear ashtrays, front and rear armrests and a cigarette lighter are only some of the

standard features that come with this special new Century.

The idea behind the Century Special is one that we think you'll appreciate. You can drive a Buick at a very appealing price. A real Buick Century without some of the frills. Sort of your Basic Buick. But with spirit.

A special spirit.



Century Custom Station Wagon

If you're the kind of family that goes for wagons, here's one for you.

The new Century look is carried through in the Century Custom Station Wagons. The standard power plant is a sturdy 5.7 litre 4-barrel (350 CID) V8 with High-Energy Ignition. There's 85 cubic feet of load space with the rear seats folded down and it's easy

to get at with the handy lift-up hatchback rear door. Two models are available, a 2-seat and a 3-seat version. There's a hidden storage compartment in the 2-seater.

Buick builds wagons like they're supposed to be built with such features as wagon-tailored coil spring suspension, rugged

full-perimeter frame, computer-selected springs, altitude-compensated transmission controls and much more. Options include positive traction differential, automatic level control, heavy-duty cooling and many more.

The Century Custom Station Wagon is a real wagon and one that you'll be proud to own.

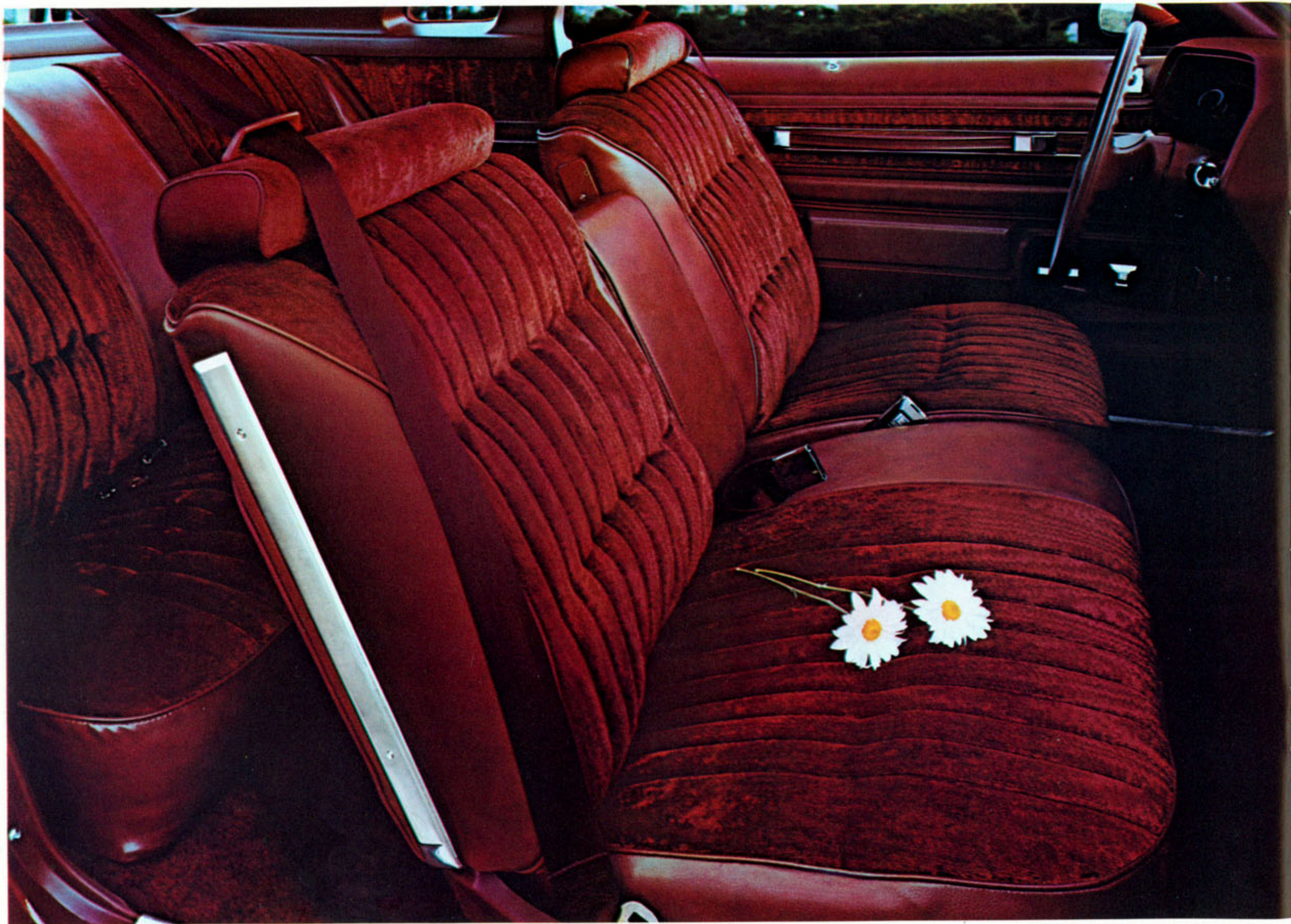


Century Special Coupe



Century Custom Station Wagon

Some of the equipment shown or mentioned is optional at extra cost



Optional custom 60/40 Seat, Century Custom, Regal

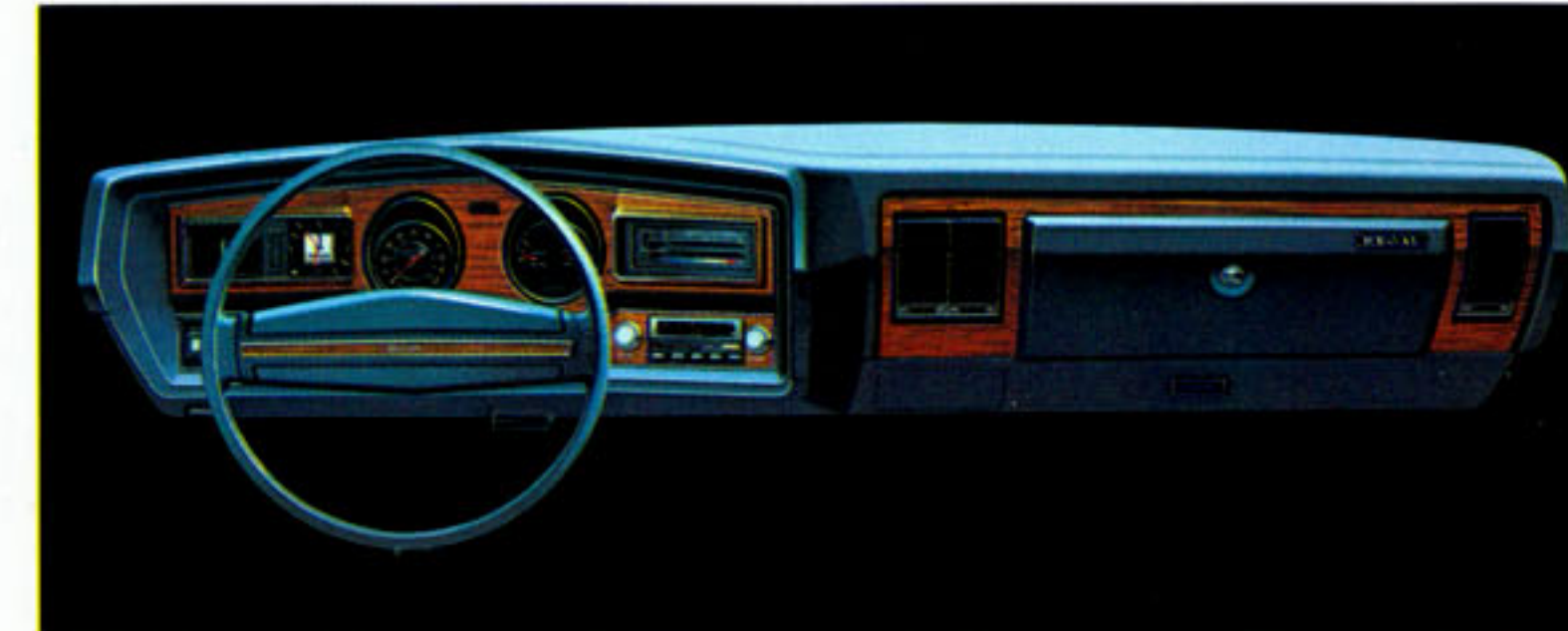
Interiors

Century Special. Standard full-width seat in Manchester cloth or vinyl, each with choice of 3 colors. Optional Notchback seat in Dover cloth or vinyl; again choice of 3 colors. Or optional bucket seats in Oxen vinyl, 3 colors.

Century. Standard full-width seat in Manchester cloth or vinyl, 3 colors. Or optional Notchback seat, Dover cloth or vinyl, in 3 colors. Or optional bucket seats in Oxen vinyl, once more with 3 colors to choose from.

Century Custom. Custom Coupe has standard Notchback seat in Dover cloth or vinyl in 3 colors. Or optional bucket seats in Oxen vinyl, 3 colors. Or Custom Notchback seat or 60/40 Notchback, extra-cost, in Geneva cloth, 4 colors, or vinyl, 3 colors. Or extra-cost Custom reclining bucket seats in Prado cloth, choice of 3 colors.

Some of the equipment shown or mentioned is optional at extra cost



Regal instrument panel and standard Deluxe steering wheel



Standard Seat, Century Special, Century



Standard Notchback Seat, Century Custom, Regal



Optional Bucket Seats, all models



Extra-Cost Bucket Seats, Regal S/R, Century Custom

Custom Sedan. Standard Notchback seat in Dover cloth or vinyl, 3 colors each. Or extra-cost bucket seats in Oxen vinyl, 3 colors.

Regal. Standard Notchback seat in Dover cloth or vinyl, choice of 3 colors each. Or optional bucket seats in Oxen vinyl, 3 colors. Or extra-cost Custom Notchback or 60/40 notchback seat in Geneva cloth, 4 colors or vinyl, 3 colors.

S/R. Extra-cost reclining bucket seats in Prado cloth, 3 colors. Coupe only.

Century Custom Station Wagon. Standard Notchback seat in vinyl, choice of 3 colors. Or extra-cost bucket seats in vinyl, in 2 colors.

White vinyl interiors are available with instrument panel, steering wheel, carpeting and panel shelf in contrasting colors.

LeSabre Custom Coupe

There is a new look to LeSabre for 1976 and it's immediately recognizable with its bold front end and rectangular headlamps.

LeSabre. An automobile of superior style. Luxuriously appointed interiors with new fabrics, trims and color selections, custom notchback or 60/40 seats in Prado cloth or Oxen grain vinyl. Mechanical innovations such as V8 engine adjustments including increased spark advance, revised carburetion and a new camshaft, all to improve mileage.

Naturally such features as power steering, power brakes, Turbo Hydra-Matic transmission, a 350 4-bbl. V8 engine, dual

horns, nylon-blend cut-pile carpeting and much more are standard. You wouldn't expect less.

Because this is the LeSabre Custom 2-door Coupe. The full-size Buick LeSabre with all the features and engineering that has made the name Buick synonymous with quality.

As optional equipment you might consider the 7.5 litre (455 CID) 4-bbl. V8, power windows, the six-way power seat, Custom Aire air conditioning, a digital clock and many others.

But however you equip your LeSabre Custom, you can be assured of owning a very special automobile.



LeSabre Custom Coupe

Some of the equipment shown or mentioned is optional at extra cost

LeSabre Custom Sedans

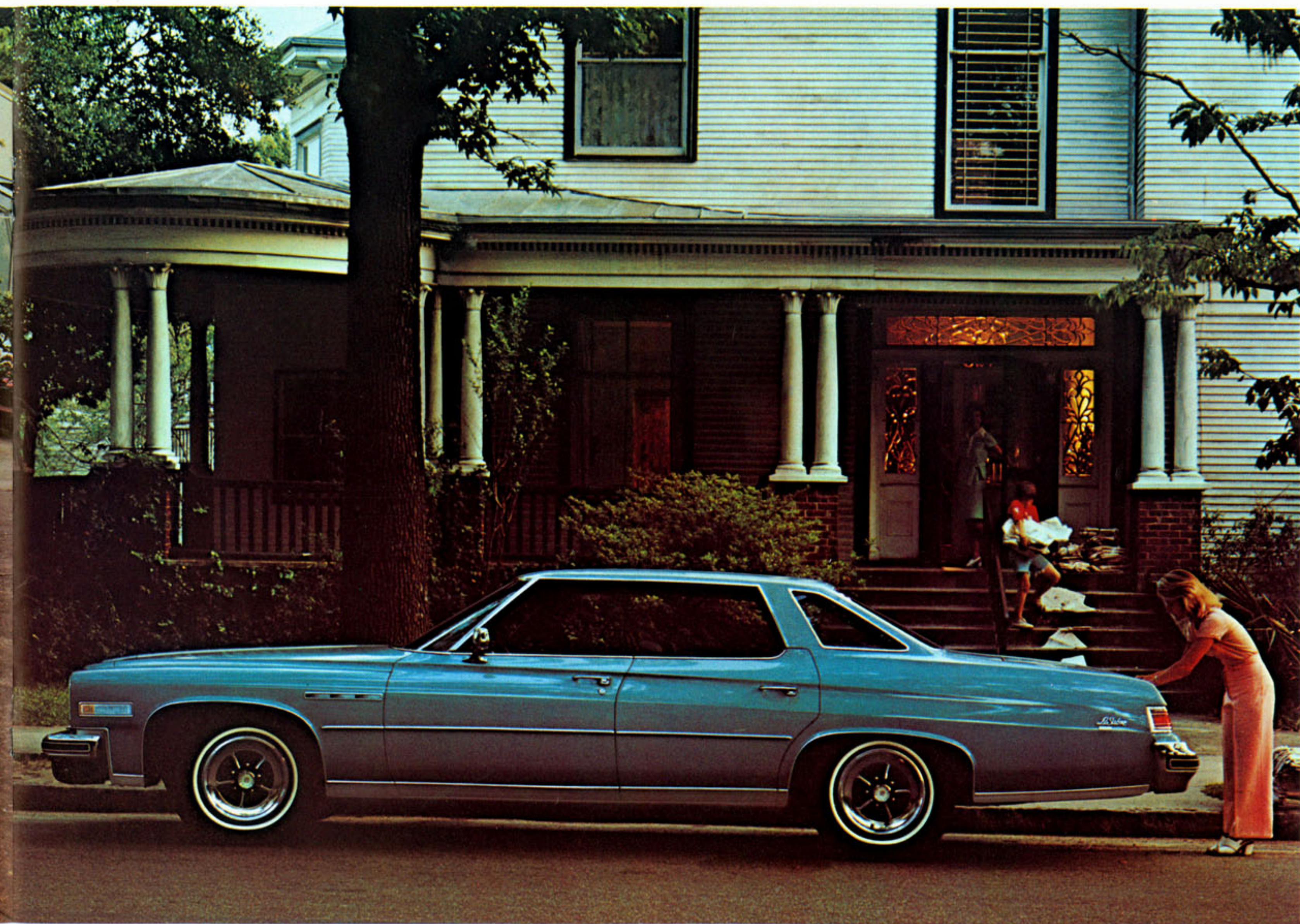
Full-size Buick LeSabre Custom Sedans are available in a regular sedan model and a dashing 4-door hardtop. The thing to remember is that no matter which way you go you're getting LeSabre quality.

And that quality runs deep. Right down to the nickel-plated exhaust valves, the Quick Engine Warm-up System, the 4-jet windshield washer, full-flow ventilation, notchback full-foam seats and more.

LeSabre Custom Sedans give you a real sense of luxury with all the convenience of four big wide-opening doors. If you wish, add optional AM, AM-FM, stereo radio and tape combinations, a tilt and telescoping steering wheel, remote control rear view mirrors or any of the other quality optional equipment available. Let your spirits soar. With LeSabre.



LeSabre Custom Sedan



LeSabre Custom Hardtop Sedan

Some of the equipment shown or mentioned is optional at extra cost

Estate Wagon

Want a full-size wagon? Look no further. Presenting Estate Wagon by Buick.

Now this is spirited living! Plenty of power to handle any size load with a big 455 4-bbl. V8 engine. Plenty of convenience with a glideaway tailgate. The window slides up neatly into the roof while the tailgate slides down into the floor. That's a power tailgate window, by the way.

Plenty of load capacity. You even get a hidden storage compartment. Plenty of strength with heavy-duty axles, wheels and tires. Plus a heavy-duty Delco energizer battery, leaf spring rear suspension and a 127"

wheelbase for smooth riding.

There's a forward facing third seat on the 3-seat model. Both models offer a number of available options including heavy-duty cooling, automatic level control, load floor area carpet, electric door locks, a luggage rack as well as many others.

Estate wagon is not for everyone but if you demand more out of life, more out of the car you drive and more space than a passenger automobile, then take a long, hard look at this beauty. It will satisfy your every requirement and make you mighty proud into the bargain.

Estate Wagon by Buick. Who else?



Estate Wagon

Some of the equipment shown or mentioned is optional at extra cost

Electra 225

Electra Limited

Electra Park Avenue

The Electra series comprises some of the finest automobiles we have ever made. Electra 225, Electra Limited and the Electra Park Avenue Option.

If the reputation of an automobile ultimately rests on its premium models then we are proud to present the Electra for your consideration.

Standard equipment includes many items found only as options on other automobiles. Interiors are spacious and elegant. The ride is superb and quiet. The exterior appearance is luxurious and sculptured.

The Park Avenue Option on the Electra 225 consists, among other things, of a special Lombardy velour with Doeskin vinyl interior trim with 40/40 or 60/40 seats, plush carpeting, velour-covered centre console (with 40/40 seats) and velour head-lining, Oxen-grain halo vinyl top and special exterior ornamentation.

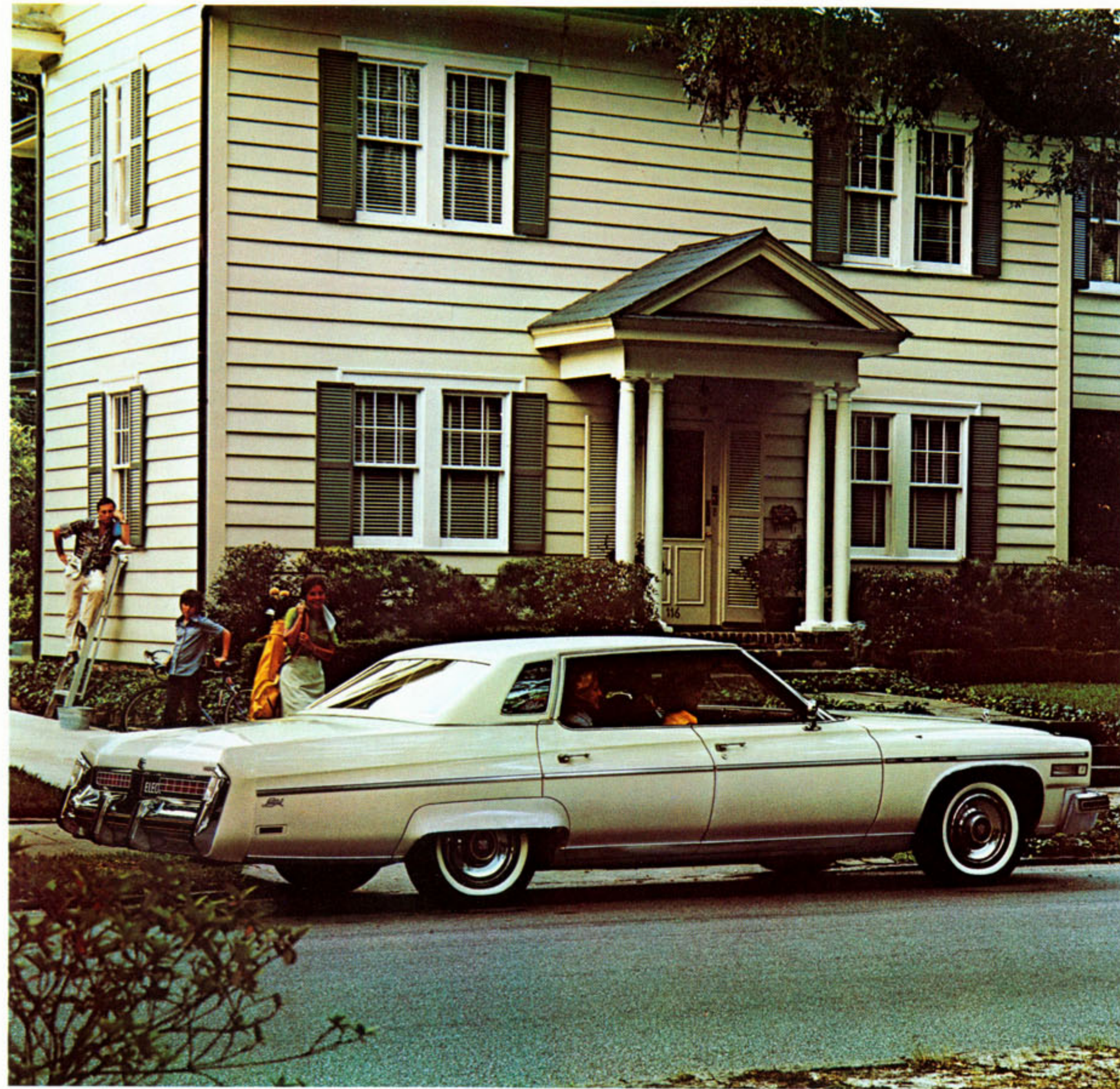
There are a small number of additional options which may be ordered on all Electras. Your dealer will help you make a selection.

Electra. Our finest.



Electra Limited Coupe

Some of the equipment shown or mentioned is optional at extra cost



Electra Park Avenue



Electra 225 Landau Coupe foreground and Electra 225 Hardtop Sedan

Some of the equipment shown or mentioned is optional at extra cost

Riviera

Riviera is our special exercise in automotive design. It tastefully combines flare and elegance, the comfort and ride of a big car with poise and grace.

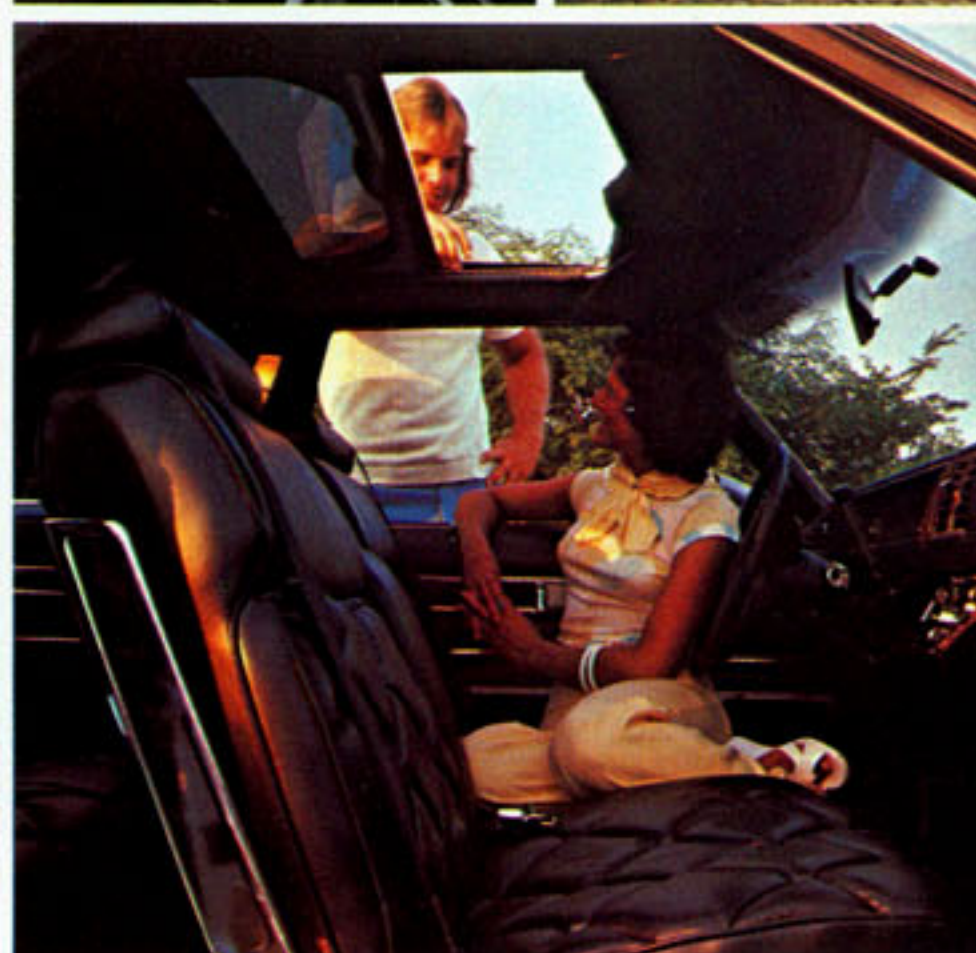
There's something about Riviera that brings out a shining glow of pride, a sense of individualism. This is no ordinary car. This is a winner.

A 122" wheelbase, a 7.5 litre 4-bbl. (455 CID) V8 engine, High-Energy Electronic Ignition, Turbo Hydra-matic automatic transmission, variable ratio power steering, power front disc brakes with audible pad-wear

indicator, steel-belted radial-ply tires, power windows, electronic digital clock, cloth notchback full-foam construction seat design and a lot, lot more.

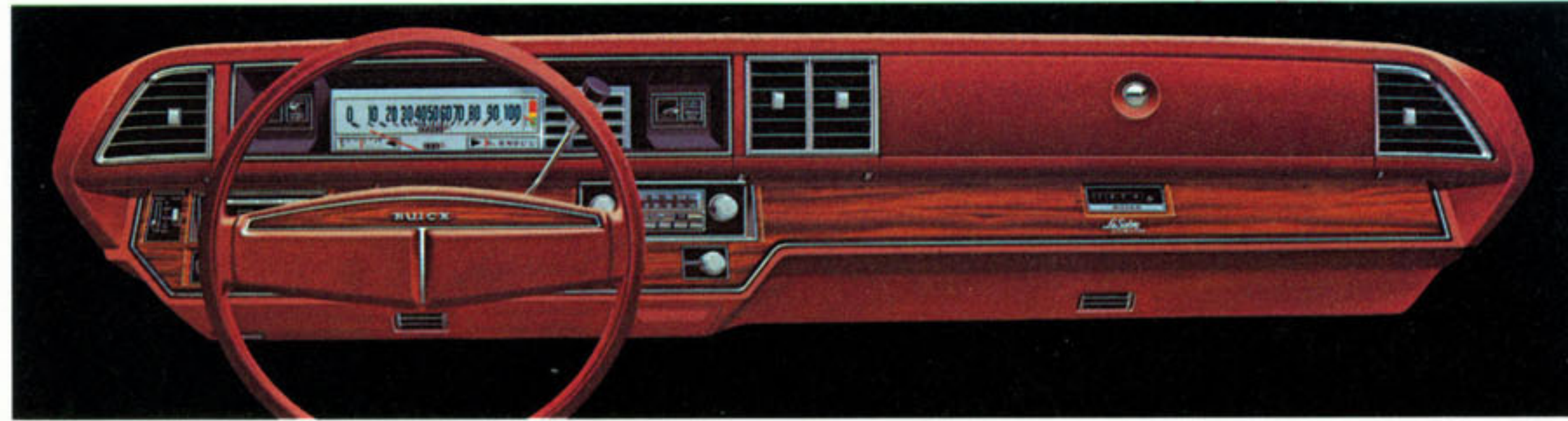
While there are few options left to order, there are some like positive traction differential, six-way power seat, Astrorof glass sun roof, Automatic Climate Control air conditioner and others that will enhance your driving pleasure.

One more word about Riviera. It is a very special car...a personal statement...to the free spirit.



Riviera Hardtop Coupe

Some of the equipment shown or mentioned is optional at extra cost



LeSabre Custom instrument panel, standard Deluxe steering wheel



LeSabre Custom Optional 60/40 Seat (Opt. Estate)



Estate Wagon Standard Seat



Electra 225 Standard Seat (4-door)



Electra 225 Standard Notchback (2-door)



Electra 225 Optional 60/40 Seat



Electra Limited Standard 60/40 Seat



Electra Limited Optional leather 60/40 Seat



Electra Park Avenue Optional 60/40 Seat



LeSabre Custom Standard Notchback (Opt. Estate)

Interiors

LeSabre Custom. Standard Notchback seat in Prado cloth or vinyl, optional 60/40 Notchback seat also in cloth or vinyl—choice of 4 colors each with all fabrics.

Estate Wagon. Standard full-width seat in Buckskin vinyl, optional Notchback or 60/40 Notchback in Prado Buckskin cloth or choice of 3 colors in vinyl.

Electra 225. Standard full-width seat (sedan only) or Notchback (or optional 60/40) seat in choice of 3 colors in Dover cloth; Notchback and optional 60/40 seat also offer vinyl trim in 4 colors.

Electra Limited. Customers can also stipulate standard 60/40 Notchback seat in Geneva cloth or extra-cost leather, choice of 4 colors.



Electra Park Avenue Optional 40/40 Seat



Riviera Optional 60/40 Seat



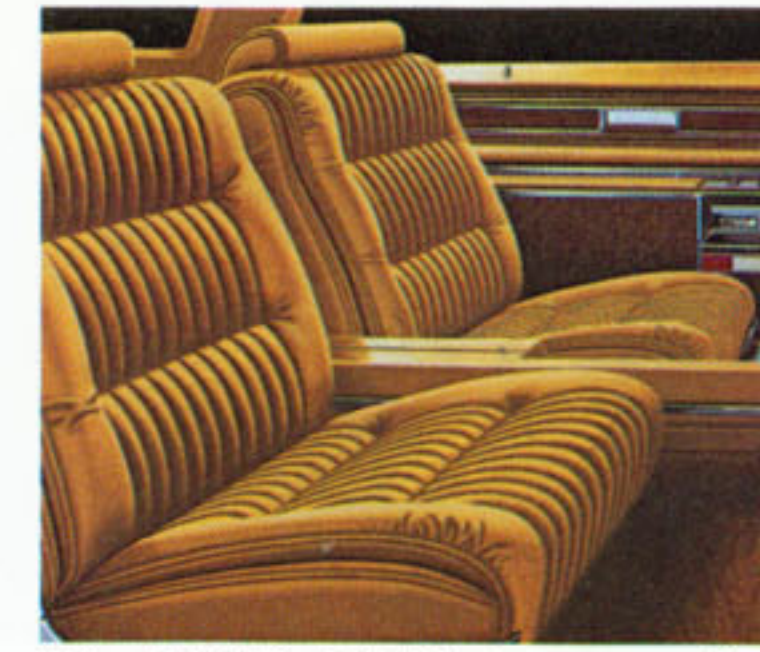
Riviera Optional 40/40 Seat



Riviera Standard Notchback



Riviera Optional 60/40 Seat



Riviera S/R Optional 40/40 Seat

Electra Park Avenue. Choice of optional 60/40 or 40/40 seat in Lombardy cloth, 4 colors.

Riviera. Standard Notchback seat in Geneva cloth, choice of 2 colors. Or optional 60/40 seat in Geneva cloth or vinyl, both in 3 colors; or optional 40/40 seat in vinyl or leather, choice of 3 colors.

Riviera S/R. Extra-cost 40/40 seat in Buckskin or Red Dover cloth.

Some of the equipment shown or mentioned is optional at extra cost

Some 1976 Buick options

1976 Buick available equipment

	SPECIAL	CENTURY/ CENTURY CUSTOM	REGAL	CENTURY CUSTOM STATION WAGONS	LaSABRE CUSTOM	ESTATE WAGON	ELECTRA 225/ ELECTRA LIMITED	RIVIERA
Power brakes	A	A*	S	S	S	S	S	S
Variable-ratio power steering	S	S	S	S	S	S	S	S
Remote tailgate lock	-	-	-	A	-	-	-	-
Firm ride and handling package	A	A	A	A	A	A	A	A
Automatic level control	A	A	A	A	A	A	A	A
Heavy-duty wheels	A	A	A	S	A	S	A	A
Heavy-duty engine and transmission cooling	A	A	A	A	A	A	A	A
Stowaway spare tire	S	A	A	-	-	-	-	-
Engine block heater	A	A	A	A	A	A	A	A
Heavy-duty air cleaner	A	A	A	A	A	A	A	A
Freedom Battery (maintenance-free)	A	A	A	A	A	A	A	A
Climate Control air conditioning	A	A	A	A	A	A	A	A
Semi-Automatic Custom Aire Air conditioning	A	A	A	A	A	A	-	-
Automatic Climate Control air conditioning	-	-	-	-	-	-	A	A
Wheel covers	A	A	S	A	S	S	S	S

A-Available S-Standard -Not available *Standard on Custom 4-door

1976 Buick available equipment

	SPECIAL	CENTURY/ CENTURY CUSTOM	REGAL	CENTURY CUSTOM STATION WAGONS	LaSABRE CUSTOM	ESTATE WAGON	ELECTRA 225/ ELECTRA LIMITED	RIVIERA
Electric sun roof (coupes only)	A	A	A	-	-	-	A	A
Hurst Hatch-roof (coupes only)	-	A	A	-	-	-	-	-
Astrorooft-sliding glass (coupes only)	-	-	-	-	-	-	A	A
Roof Crown Molding	-	-	-	-	-	-	-	A
Tilt steering wheel	A	A	A	A	A	A	A	S
Tilt and telescoping steering column	-	-	-	-	A	A	A	A
Electric trunk release	A	A	A	-	A	-	A	A
Electric door locks	A	A	A	A	A	A	A	A
Automatic power door locks	-	-	-	-	-	-	A	A
Cruise Master speed control	A	A	A	A	A	A	A	A
Speed alert	A	A	A	A	A	A	A	A
Accessory group lights	A	A	A	A	A	A	S	S
"Low fuel" indicator light	-	-	-	-	A	A	A	A
Fuel usage gauge	A	A	A	A	A	A	A	A
Special appearance or treatment moldings	A	A	A	A	A	A	A	A
Electric clock	A	A	A	A	-	-	-	-

A-Available S-Standard -Not available

1976 Buick available equipment

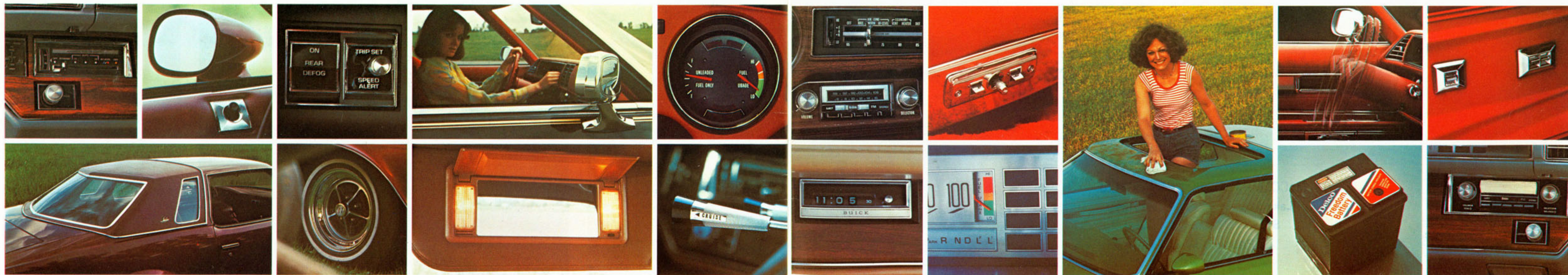
	SPECIAL	CENTURY/ CENTURY CUSTOM	REGAL	CENTURY CUSTOM STATION WAGONS	LaSABRE CUSTOM	ESTATE WAGON	ELECTRA 225/ ELECTRA LIMITED	RIVIERA
Electronic quartz-crystal digital clock	-	-	-	-	A	A	S	S
Power windows	A	A	A	A	A	A	S	S
Front fender-light monitors	-	-	-	-	A	A	A	A
Sport mirrors (left side remote control)	A	A	A	A	A	A	A	A
Remote-control outside rear view mirror (left)	A	A	A	A	A	A	S	S
Remote-control outside rear view mirror (right)	-	-	-	-	A	A	A	A
Rear-window defogger (blower)	A	A	A	-	A	-	A	A
Rear-window defogger (electric)	A	A	A	A	S	S	S	S
Carpet savers and Handi-mats	A	A	A	A	A	A	A	A
Litter pocket	A	A	A	A	A	A	A	A
6-way power seat	A	A	A	A	A	A	A	A
Cornering lights	-	-	-	-	A	A	A	A
3-speed windshield wiper with low-speed delay feature	A	A	A	A	A	A	A	A
Soft Ray tinted glass	A	A	A	A	A	A	A	A
Bumper guards	A	A	A	A	A	A	A	S†

A-Available S-Standard -Not available †Front only

1976 Buick available equipment

	SPECIAL	CENTURY/ CENTURY CUSTOM	REGAL	CENTURY CUSTOM STATION WAGONS	LaSABRE CUSTOM	ESTATE WAGON	ELECTRA 225/ ELECTRA LIMITED	RIVIERA
Full-length operating console	A	A	A	A	-	-	-	A
AM radio, AM-FM radio	A	A	A	A	A	A	A	A
Rear seat speaker (single)	A	A	A	A	A	A	A	A
AM or AM-FM stereo radio and stereo tape player	A	A	A	A	A	A	A	A
AM-FM stereo radio with front and rear dual speakers	A	A	A	A	A	A	A	A
Automatic power mast antenna	-	-	-	-	A	A	A	A
Positive traction rear axle	A	A	A	A	A	A	A	A
Air Restraint System	-	-	-	-	A	-	A	A
Oil pressure and temperature gauges	A	A	A	-	-	-	-	-
"Headlamps on" indicator	A	A	A	A	A	A	A	A
Bumper protective strips	A	S	S	S	S	S	S	S
Protective side moldings	A	A	A	A	A	A	A	A
Lighted visor vanity mirror	A	A	A	A	A	A	A	A
Dome reading light	A	A	A	A	A	A	A	A
Door courtesy and warning lights	-	-	-	-	A	A	A	A

A-Available S-Standard -Not available



Specifications

		CENTURY SPECIAL	CENTURY	CENTURY CUSTOM	STATION WAGONS	REGAL	Le SABRE CUSTOM	ESTATE WAGON	ELECTRA	RIVIERA
Body Styles		Hardtop Coupe — —	Hardtop Coupe Hardtop Sedan —	Hardtop Coupe Hardtop Sedan —	2-seat 3-seat —	Hardtop Coupe Hardtop Sedan —	Hardtop Coupe Hardtop Sedan 4-door Sedan	2-seat 3-seat —	Hardtop Coupe Hardtop Sedan —	Hardtop Coupe — —
Engines—Standard Optional		231—2-bbl. V6 — —	231—2-bbl. V6 350—2-bbl. V8 350—4-bbl. V8	231—2-bbl. V6 350—2-bbl. V8 350—4-bbl. V8	350—4-bbl. V8 — —	231—2-bbl. V6 350—2-bbl. V8 350—4-bbl. V8	350—4-bbl. V8 455—4-bbl. V8 —	455—4-bbl. V8 — —	455—4-bbl. V8 — —	455—4-bbl. V8 — —
Transmissions	Standard Optional	3-spd. manual Hydra-Matic	3-spd. manual Hydra-Matic	3-spd. manual Hydra-Matic	Hydra-Matic —	3-spd. manual Hydra-Matic	Hydra-Matic —	Hydra-Matic —	Hydra-Matic —	Hydra-Matic —
Brakes	Front disc/rear drum Power	Standard Optional	Standard Optional	Standard Standard Sedan Optional Coupe	Standard Standard	Standard Standard	Standard Standard	Standard Standard	Standard Standard	Standard Standard
Tires	Standard	FR 78-15	FR 78-15 (GR 78-15 Coupe)	FR 78-15 (GR 78-15 Coupe)	HR 78-15	GR 78-15	HR 78-15	LR 78-15	JR 78-15	JR 78-15
Wheelbase	2-dr. 4-dr.	112.0 in. —	112.0 in. 116.0 in.	112.0 in. 116.0 in.	— 116.0 in.	112.0 in. 116.0 in.	124.0 in. 124.0 in.	— 127.0 in.	127.0 in. 127.0 in.	122.0 in. —
Length	2-dr. 4-dr.	209.7 in. 213.5 in.	209.7 in. 213.5 in.	209.7 in. 213.5 in.	— 218.2 in.	209.7 in. 213.5 in.	226.9 in. 226.9 in.	— 231.8 in.	233.4 in. 233.4 in.	223.0 in. —
Height	2-dr.	53.5 in.	53.5 in.	53.5 in.	55.3 in. (4-dr.)	53.5 in.	53.8 in.	58.4 in. (4-dr.)	54.6 in.	53.7 in.
Width		79.0 in.	79.0 in.	79.0 in.	79.0 in.	79.0 in.	79.9 in.	79.9 in.	79.9 in.	79.9 in.
Fuel Tank Capacity (app.)		18.3 Imp. Gal.	18.3 Imp. Gal.	18.3 Imp. Gal.	18.3 Imp. Gal.	18.3 Imp. Gal.	21.6 Imp. Gal.	18.3 Imp. Gal.	21.6 Imp. Gal.	21.6 Imp. Gal.
Curb Weight	2-dr.	3642 lbs.	3732 lbs.	3775 lbs.	4485 lbs. (4-dr.)	3837 lbs.	4456 lbs.	5150 lbs. (4-dr.)	4656 lbs.	4677 lbs.
Headroom	front (4-dr.) rear	37.7 in. (2-dr.) 37.0 in.	38.3 in. 37.5 in.	38.3 in. 37.5 in.	38.8 in. 39.4 in.	38.3 in. 37.5 in.	38.4 in. 37.4 in.	39.6 in. 39.3 in.	39.3 in. 38.2 in.	38.1 in. (2-dr.) 37.1 in.
Legroom	front rear	42.4 in. 32.9 in.	42.4 in. 37.0 in.	42.4 in. 37.0 in.	42.3 in. 36.8 in.	42.4 in. 37.0 in.	42.1 in. 38.8 in.	42.1 in. 39.4 in.	42.2 in. 40.8 in.	42.2 in. 35.4 in.
Shoulder Room	front rear	59.6 in. 57.5 in.	59.6 in. 58.9 in.	59.6 in. 58.9 in.	59.6 in. 58.9 in.	59.6 in. 58.9 in.	64.3 in. 63.3 in.	64.0 in. 63.1 in.	64.0 in. 63.1 in.	63.6 in. 62.4 in.
Hip Room	front rear	54.9 in. 52.7 in.	54.7 in. 57.7 in.	54.7 in. 57.7 in.	54.7 in. 55.1 in.	54.7 in. 57.7 in.	62.0 in. 61.9 in.	59.4 in. 59.0 in.	57.5 in. 57.7 in.	57.6 in. 56.0 in.
Usable Luggage Space	2-dr. 4-dr.	15.1 cu. ft. —	15.1 cu. ft. 14.6 cu. ft.	15.1 cu. ft. 14.6 cu. ft.	— —	15.1 cu. ft. 14.6 cu. ft.	17.5 cu. ft. 16.8 cu. ft.	— —	20.7 cu. ft. 20.3 cu. ft.	15.1 cu. ft. —
Cargo Volume		—	—	—	85.1 cu. ft.	—	—	105.7 cu. ft.	—	—

The illustrations in this catalogue do not necessarily show standard colors, materials and equipment. General Motors of Canada Limited reserves the right to make changes at any time without notice, in prices, colors, materials, equipment, specifications and models, and also to discontinue models. This right may be exercised without incurring any responsibility with regard to cars previously sold.

GENERAL MOTORS OF CANADA LIMITED, OSHAWA, ONTARIO

