

E A G L E 1 9 9 5

V

I

S

I

O

N



Know what separates a real sports sedan from the pretenders? Performance technology, pure and simple. It's what you'll find in abundance in the Eagle Vision, which *Car and Driver* called "enormously satisfying" (April 1993). Not just fancy wheels and eye-catching colors, but serious hardware like responsive engines and a sophisticated suspension. And around them, Chrysler's revolutionary cab-forward, wheels-to-the-corners design. You see, when we first began planning the Vision, we knew exactly what it had to be right out of the box: a driver's car with four doors, plenty of room for five, and loaded with the cutting-edge technology that's come to be the watchword at Chrysler Corporation. It's just what you'll discover by taking The Eagle Test Drive. This systematic evaluation of everything that makes an Eagle an Eagle will show you why Vision is unlike any other car you've ever owned. Even if they *all* had spoilers.



THE EAGLE TEST DRIVE



♦ driver orientation	♦ handling & control	♦ structural integrity	♦ award-winning design	♦ powertrain design	♦ safety & security	♦ comfort & convenience	♦ specifications	♦ features	♦ commitment
4	8	10	11	14	16	20	24	26	28



Eagle Vision TSi
in Black



Test-drive
Eagle Vision,
THE EAGLE
TEST DRIVE and you'll

be perfectly positioned to
reach all controls and see
more of the road around you.



E A G L E

V I S I O N

1 9 9 5

Controls for Vision's power
heated mirrors and power
windows are con-
toured for fingertip
activation and feature LED
indicators for night driving.



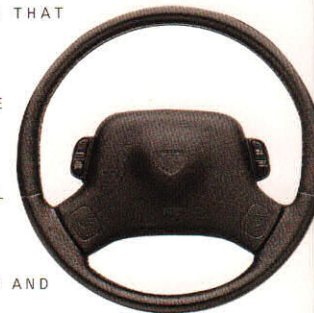
The backs of Vision's
front bucket seats
are infinitely adjust-
able. And there's
a driver's lumbar
support too.



Every control has been
carefully shaped and
positioned, so the
driver can concentrate
on the road and
traffic ahead.



AT THE HEART OF EVERY SERIOUS SPORTS SEDAN IS A
DESIGN PHILOSOPHY THAT PUTS THE SOPHISTICATED
driver orientation
PERFORMANCE DEMANDS OF THE DRIVER FIRST. THAT'S
WHY EVERY EAGLE VISION FEATURES A FIRMLY SUP-
PORTIVE DRIVER'S SEAT WITH A STANDARD ADJUSTABLE
supportive seating
LUMBAR SUPPORT. AND A STEERING COLUMN THAT
TILTS, SO YOU CAN ATTAIN THE BEST POSSIBLE
DRIVING POSITION. BEYOND THE STEERING WHEEL
ITSELF ARE CLEARLY VISIBLE ANALOG GAUGES AND
fingertip controls
FINGERTIP CONTROLS FOR ALL IMPORTANT FUNCTIONS:
FROM STANDARD POWER WINDOWS AND DOOR LOCKS
TO ELECTRONIC SPEED CONTROL AND THE OPTIONAL
11-SPEAKER CHRYSLER/ INFINITY SPATIAL IMAGING™
optimal visibility
SOUND SYSTEM. AND SINCE THE DRIVER'S WORLD
EXTENDS FAR BEYOND THE CAR ITSELF, VISION'S DESIGN-
ERS MADE CERTAIN THE DRIVER WOULD HAVE A CLEAR
VIEW IN ALL DIRECTIONS. ESPECIALLY FAST-FORWARD.



No part of a car is
more closely linked
to the literal act
of driving than the
steering wheel. So
why, in so many
cars, does the design
of the steering wheel
appear to be a mere
afterthought?

Vision's
human engineering
approach places pri-
mary emphasis on
the shape and feel of
the rim in the driver's
hands. Just as impor-
tant to Vision's inter-
ior designers was
the placement of the
horn buttons and the
standard electronic
speed control. On
Vision, both can be
activated without
taking the driver's
attention away from
the serious business
of driving.



Eagle Vision TSi
in Bright Platinum Silver Metallic

CREATING A SPORTS SEDAN IS NO EASY TASK. SAY

"SPORTS," AND PEOPLE IMMEDIATELY THINK QUICK

handling & control

REFLEXES AND FIRM CONTROL. SAY "SEDAN," AND A

SMOOTH, SUPPLE RIDE COMES TO MIND. PUT THEM

TOGETHER AND SOMETHING HAS TO SUFFER. NOT SO

touring suspension

WITH EAGLE VISION. IT FEATURES WHEELS-TO-THE-

CORNERS DESIGN AND A FULLY INDEPENDENT SUSPEN-

SION THAT PROVIDES AN OUTSTANDING BALANCE

BETWEEN RIDE AND HANDLING. VISION TSi'S STEERING,

responsive steering

WHICH *AUTOMOBILE MAGAZINE* CALLS "COMMUNICA-

TIVE," OFFERS A FIRM, SOLID FEEL AT HIGHWAY

SPEEDS YET IS EASY TO TURN WHEN PARKING. AND

WHEN IT COMES TO STOPPING AND GOING, VISION TSi

ABS/traction control

OFFERS FOUR-WHEEL ANTI-LOCK POWER DISC BRAKES

AND OPTIONAL LOW-SPEED TRACTION CONTROL. ALL

OF WHICH PROVE THAT THE WORD "COMPROMISE"

HAS NO PLACE IN EAGLE'S ENTHUSIAST PHRASE BOOK.



Vision TSi's Performance Handling

Group option fea-

tures a performance-

tuned suspension

plus speed-rated

Michelin XGT V4

performance tires

(shown above) with

variable compliance

grooves designed to

work well on wet or

dry surfaces.

Vision's four-wheel

fully independent

suspension features

gas-pressurized

MacPherson struts

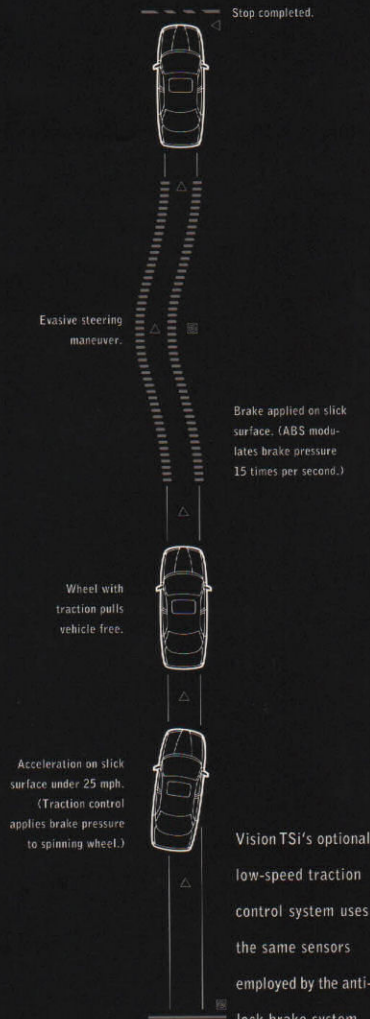
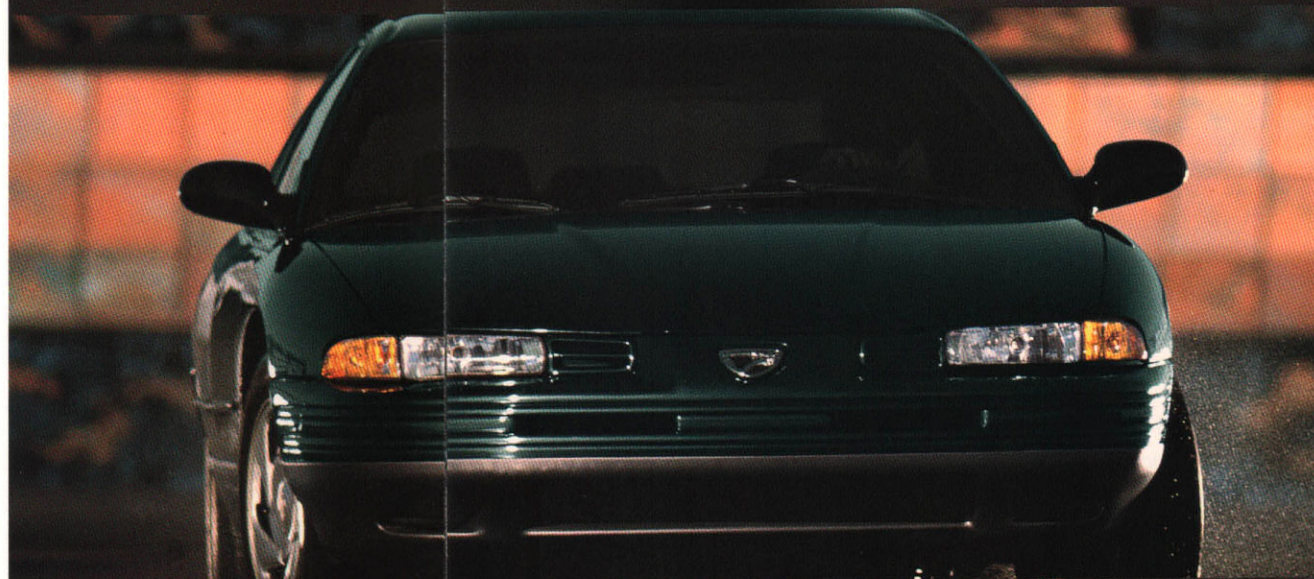
and a stabilizer bar

up front with gas-

pressurized Chapman

struts and a stabilizer

bar at the rear.



Brake applied on slick surface. (ABS modulates brake pressure 15 times per second.)

Vision TSi's optional

low-speed traction

control system uses

the same sensors

employed by the anti-

lock brake system

to detect brake

lockup. Only here,

their job is to deter-

mine when either

wheel begins slip-

ping. In both cases,

brake pressure is

altered to allow the

slipping wheel to

regain

trac-

tion.



JUST ABOUT ANY SEDAN YOU'D CARE TO NAME CAN HANDLE FIVE PASSENGERS AND A SMOOTH INTERSTATE. BUT

structural integrity

WHAT ABOUT TWISTING ROADS AND LESS THAN PERFECT PAVEMENT? THIS IS WHERE EAGLE VISION REALLY

SHINES. THANKS TO WHAT ENGINEERS CALL RIGID

body rigidity

UNIBODY CONSTRUCTION. USING COMPUTERS, VISION'S TECHNICAL TEAM WAS ABLE TO CREATE THE STIFF

STEEL BODY THAT MAKES IT ONE VERY STRONG CAR.

STRONG ENOUGH TO DRAMATICALLY REDUCE ROAD NOISE

galvanized steel

AND VIBRATION, WHILE HELPING TO PROTECT ITS OCCUPANTS IN A COLLISION. SO STRONG, IN FACT, THAT IT

ACTUALLY INCREASES THE EFFECTIVENESS OF VISION'S

FOUR-WHEEL FULLY INDEPENDENT SUSPENSION IN TIGHT

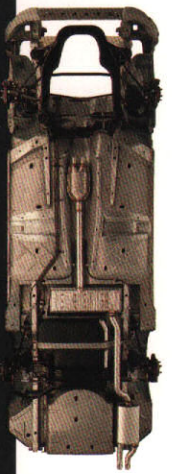
corrosion protection

URNS AND ON ROUGH ROADS. WHAT'S MORE, VISION'S BODY UNDERGOES A 21-STEP PAINT AND FINISHING PRO-

CESS THAT HELPS KEEP THE EFFECTS OF TIME AND THE

ELEMENTS IN WHAT YOU MIGHT CALL "THE SLOW LANE."

Underneath it all, Vision's galvanized steel unibody is a tower of strength. By incorporating



such structural elements as straight front rails into the floor, engineers were able to create an extremely rigid yet lightweight platform for Vision's four-wheel fully independent suspension.



a



b



c



A test drive of THE EAGLE TEST DRIVE Eagle

Vision will clearly demonstrate the superiority of its advanced cab-forward design. Because of Vision's wide track and long wheelbase, you will experience a smooth ride, crisp handling, a spacious interior, and remarkable outward visibility.



Vision's ingenious cab-forward design creates more than just a spacious interior, a wider track, and a longer wheelbase. It also contributes to handling by accommodating a seven-inch rim width for Vision's 16-inch wheels. Shown above, from top to bottom, are the Caisson road wheel (a), the Pacifica Polycast® road wheel (b), and the six-spoke wheel cover (c).



FEW SPORTS SEDANS HAVE EVER LOOKED AS FIERCELY CAPABLE AS EAGLE VISION. BOTH THE OVERALL SHAPE

award-winning design

AND INDIVIDUAL DETAILS OF ITS INNOVATIVE CAB-FORWARD DESIGN SUGGEST OUTSTANDING AERODYNAMICS.

BUT THAT ALONE CAN'T EXPLAIN THE CRITICAL ACCLAIM

cab-forward design

VISION'S DESIGN HAS RECEIVED WORLDWIDE. RATHER, IT'S THE EFFECTIVENESS OF VISION'S REVOLUTIONARY

WHEELS-TO-THE-CORNERS APPROACH TO AUTOMOTIVE ARCHITECTURE. A LONG WHEELBASE HELPS PRODUCE

advanced aerodynamics

A BETTER RIDE. A WIDE STANCE TRANSLATES INTO GREATER STABILITY. AND, WITH THE WHEELS FARTHER

OUT, THERE CAN BE MORE ROOM FOR PASSENGERS AND THEIR LUGGAGE. NOT TO MENTION ALL THE

worldwide recognition

HONORS BESTOWED ON VISION BY THE MOTORING PRESS, INCLUDING BEING NAMED ONE OF *AUTOMOBILE*

MAGAZINE'S "ALL-STARS" AND MAKING *CAR AND DRIVER'S* "TEN BEST" LIST TWO YEARS STRAIGHT. AND COUNTING.

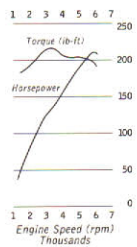
The aerodynamic efficiency of Vision's cab-forward design is readily apparent from any angle. The sloping front end maximizes forward visibility, while the overall



clean body shape reduces crosswind side force at the rear to better stabilize Vision at highway speed. No wonder that upon its introduction, Vision was named 1993 "Automobile of the Year" by *Automobile Magazine*.



Eagle Vision ES1
in Orchid Pearl Coat



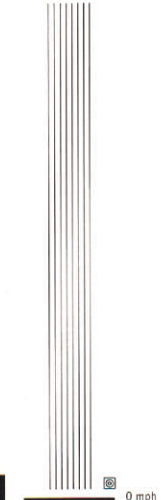
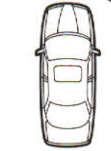
Eagle Vision
TSi's 24-valve
3.5 litre V6
engine delivers
exceptional
smoothness up
to a 6460 rpm



redline. With
214 horsepower
and 221 lb-ft of
torque on tap,
Vision TSi accel-
erates from 0 to
60 mph in just
8.1 seconds.*

*Car and Driver.

60 mph

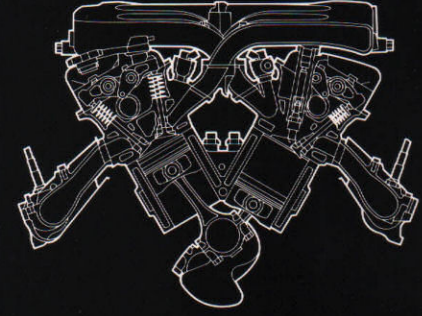


14 0 mph

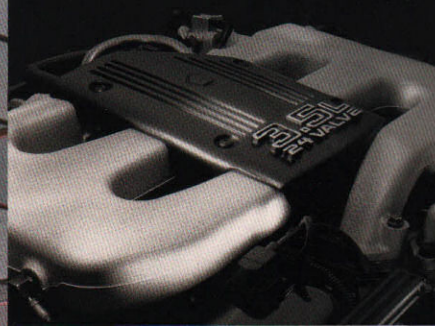
IF ANYTHING CAN PUT *SPORTS* INTO A SEDAN, IT'S A
FIRST-RATE ENGINE AND TRANSMISSION. WHICH IS
powertrain design
EXACTLY WHAT YOU'LL FIND IN EVERY EAGLE VISION.
ENTHUSIASTS WILL RECOGNIZE THESE PERFORMANCE
ENGINE CREDENTIALS: V6 CONFIGURATION, ALUMINUM-
V6 power
ALLOY CYLINDER HEAD, HIGH-SWIRL COMBUSTION CHAM-
BERS, ROLLER BEARING ROCKER ARMS, ELECTRONIC
SEQUENTIAL MULTI-POINT FUEL INJECTION, AND A
multi-point injection
DISTRIBUTORLESS IGNITION SYSTEM. ALL BROUGHT
TOGETHER TO PRODUCE WHAT ONE *CAR AND DRIVER* EDI-
TOR DESCRIBED AS A "WILLINGNESS TO HUSTLE" (APRIL
1994). AND, THANKS TO AN ELECTRONICALLY CONTROLLED
FOUR-SPEED AUTOMATIC OVERDRIVE TRANSMISSION
4-speed automatic
THAT "LEARNS" HOW YOU DRIVE AND ADJUSTS THE
SHIFT PATTERN ACCORDINGLY, YOU'VE PROBABLY NEVER
ENJOYED DRIVING ANY FIVE-PASSENGER AUTOMOBILE
MORE. EVEN IF YOU'RE WITH THE HIGHWAY PATROL.



Whether you test-drive
the 161 hp Vision ESi or
the Vision TSi with its
214 hp 24-valve overhead
cam high-output V6,
you'll experience the



smooth shifts of an elec-
tronically controlled four-
speed automatic trans-
mission that features
software programming
designed to adjust shift
points to
your driving
style. THE EAGLE
TEST DRIVE



AS ANY RACE CAR DRIVER WILL TELL YOU, FEELING

SAFE AND SECURE WILL MAKE YOU A MORE CONFIDENT

safety & security

DRIVER. WHICH MAKES DRIVING A SOPHISTICATED

SPORTS SEDAN LIKE EAGLE VISION EVEN MORE FUN. TO

THAT END, VISION FEATURES STANDARD DUAL AIR

dual air bags†

BAGS,† SIDE-GUARD DOOR BEAMS THAT ALREADY MEET

THE 1997 FEDERAL DYNAMIC SIDE-IMPACT STANDARDS,

REAR CHILD-PROTECTION DOOR LOCKS, AND EASY-TO-USE

THREE-POINT SEAT BELTS FOR ALL OUTBOARD SEATING

door beams

POSITIONS. WHAT'S MORE, VISION'S FRONT SEAT

BELTS ARE HEIGHT-ADJUSTABLE TO PROVIDE GREATER

COMFORT FOR TALL OR SHORT PASSENGERS. THERE'S

EVEN A SPECIAL OPTION FOR SMALL CHILDREN: AN

child safety seat

INTEGRATED CHILD SAFETY SEAT. BECAUSE THE ONLY

THING MORE IMPORTANT THAN KNOWING YOU'RE SAFE

AND SECURE IS KNOWING ALL YOUR LOVED ONES ARE.

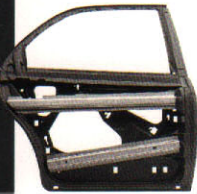
†ALWAYS WEAR YOUR SEAT BELT.

Chrysler Corporation's award-winning integrated child safety seat is optional (available in Medium Quartz cloth only).



No serious sports sedan should come without the dual air bags you'll find standard on Vision. Remember to always wear your seat belt.

Vision's four doors employ ultra high-strength steel beams that are shaped to repel collision impact. For added strength, the beam attaches directly to the door latch mounting surface.



When your property and your personal security are of utmost importance, it's good to know that state-of-the-art remote keyless entry and security alarm systems are available as options on every Vision.



Slip into front-seat shoulder belts that are height-adjustable for greater comfort.



Test-drive Eagle Vision knowing that it has been designed with crumple zones that deform to help absorb energy in a front or rear collision.



THE EAGLE TEST DRIVE



Eagle Vision ES
in Spruce Pearl Coat

When you test-drive

Vision, be sure to

check out the optional

Chrysler/Infinity

Spatial Imaging™

sound system.



Available with either a cassette or a compact disc player, the Chrysler/Infinity Spatial Imaging™ sound system features 11 Infinity speakers in seven locations.



NO MATTER HOW GOOD A SPORTS SEDAN IS AT SLICING THROUGH A SLALOM COURSE OR RACING THROUGH THE QUARTER-MILE TIME TRAPS, THE FACT REMAINS THAT IT MUST BE EQUALLY ADEPT AT TRANSPORTING FIVE PEOPLE THROUGH THE REAL WORLD. THAT MEANS IT MUST DO MORE THAN CODDLE ITS DRIVER. IT MUST ADDRESS THE NEEDS OF ALL OF ITS PASSENGERS WITH THE KIND OF COMFORT AND CONVENIENCE ONCE RESERVED ONLY FOR LUXURY CARS. EAGLE VISION DOES. WITH AN INTERIOR *MOTOR TREND* MAGAZINE DEEMED "HUGE." REAR SEAT PASSENGERS GET OVERHEAD ASSIST HANDLES, READING LAMPS, A CENTER FOLDING ARMREST, AND THEIR OWN AIR VENTS. ALL STANDARD. THERE'S EVEN A CHOICE OF PREMIUM SOUND SYSTEMS INCLUDING A COMPACT DISC PLAYER AND A DEALER-INSTALLED TRUNK-MOUNTED SIX-DISC CHANGER. SO YOU CAN TUNE IN, TURN UP, AND HEAD ON OUT.



Standard on Vision TSi is a full overhead console that includes dual reading lamps, a compass, outside temperature display, a six-function trip computer, and storage compartments for sunglasses and a garage door opener.



Standard on TSi and optional on ESi, automatic temperature control (ATC) makes it easy to take full advantage of the high-capacity air conditioning/ventilation system with CFC-free refrigerant that's standard on every Vision. ATC features a sun-load sensor that adjusts the system for sunny or cloudy days.

Left to right: power moonroof,* 3-way sun visors, rear seat courtesy lights with grab handles, dual cup holders, 8-way power driver's seat. *Late availability.



No examination of the Eagle Vision is complete without a close look at its many innovative design details.



THE EAGLE TEST DRIVE





Eagle Vision TSi interior

specifications

powertrain

TYPE	LONGITUDINAL FRONT ENGINE/ FRONT-WHEEL DRIVE LAYOUT	
ENGINE	ESI	TSI
ENGINE TYPE	3.3 LITRE, OHV, 12-VALVE V6 CYLINDER	3.5 LITRE, OHC, 24-VALVE V6 CYLINDER
HORSEPOWER, NET BRAKE @ rpm	161 @ 5300	214 @ 5850
TORQUE, NET lb-ft @ rpm	181 @ 3200	221 @ 3100
REDLINE (MAX. rpm)	5440	6460
BORE x STROKE, mm (in.)	93 (3.66) x 81 (3.19)	96 (3.78) x 81 (3.19)
DISPLACEMENT, cc (cu. in.)	3301 (201)	3518 (215)
COMPRESSION RATIO	8.9:1	9.4:1
INDUCTION SYSTEM	ELECTRONIC SEQUENTIAL MULTI-POINT FUEL INJECTION; LOW RESTRICTION, TUNED INTAKE MANIFOLD WITH SINGLE THROTTLE-BODY	ELECTRONIC SEQUENTIAL MULTI-POINT FUEL INJECTION; DUAL PLENUM CROSS RAM TUNED INTAKE MANIFOLD WITH DUAL THROTTLE-BODIES AND SPEED-SENSITIVE MANI- FOLD TUNING VALVE
COMBUSTION CHAMBER DESIGN	HIGH-SWIRL COMPOUND WEDGE	HIGH-SWIRL PENTROOF
VALVETRAIN	OVERHEAD VALVES, 2 VALVES PER CYLINDER, ROLLER BEAR- ING ROCKER ARMS	SINGLE OVERHEAD CAMSHAFT, 4 VALVES PER CYLINDER, ROLLER BEARING ROCKER ARMS
CYLINDER HEAD	ALUMINUM ALLOY	ALUMINUM ALLOY
CRANKSHAFT DESIGN	NODULAR CAST IRON, 4 MAIN BEARINGS	FORGED STEEL, 4 MAIN BEARINGS WITH CROSS- BOLTED FEATURE ON THE 2 BEARINGS FOR INCREASED STRENGTH
ENGINE BLOCK	CAST IRON WITH BLOCK- STIFFENING FEATURES	CAST IRON WITH EXTRA BLOCK-STIFFENING FEATURES
EMISSION CONTROL (PRIMARY)	3-WAY CATALYTIC CON- VERTER, DUAL CLOSE- COUPLED MINI LIGHT-OFF CATALYTIC CONVERTERS, DUAL OXYGEN SENSORS	HIGH-VOLUME, LOW- RESTRICTION 3-WAY CATALYTIC CONVERTER, DUAL CLOSE-COUPLED MINI LIGHT-OFF CATA- LYTIC CONVERTERS, DUAL OXYGEN SENSORS

powertrain cont.

IGNITION SYSTEM	DISTRIBUTORLESS IGNITION SYSTEM	DISTRIBUTORLESS IGNITION SYSTEM WITH DUAL ENGINE-KNOCK SENSORS
RECOMMENDED FUEL	87 OCTANE, REGULAR UNLEADED	89 OCTANE, MID-GRADE UNLEADED
TRANSMISSION	ELECTRONICALLY CONTROLLED 4-SPEED OVERDRIVE AUTOMATIC WITH LOCKUP TORQUE CONVERTER; INCLUDES ADAPTIVE MEM- ORY THAT OPTIMIZES SHIFT PATTERNS; 8.25-INCH HYPOID GEAR AND TRANSFER CHAIN DESIGN; 10.0-INCH TORQUE CONVERTER DIAMETER (UPGRADED FOR HIGHER SPEEDS/LOADS ON 3.5L ENGINE).	
RATIO	3.3L V6/3.5L V6	
1ST	2.84	
2ND	1.57	
3RD	1.00	
4TH	0.69	
REVERSE	2.21	
AXLE RATIO	3.66	
OVERALL TOP GEAR RATIO	2.52	

body/suspension/chassis

BODY TYPE	STEEL UNIBODY WITH ADVANCED BEXLOY® POLYMER COMPOSITE FRONT FENDERS	
FRONT SUSPENSION	TOURING-TUNED INDEPENDENT, GAS-PRESSURIZED MACPHERSON STRUTS WITH COIL SPRINGS, DOUBLE BALL JOINT STABILIZER BAR, AND FUNCTION- SPECIFIC BUSHINGS	
REAR SUSPENSION	TOURING-TUNED INDEPENDENT, GAS-PRESSURIZED CHAPMAN STRUTS WITH COIL SPRINGS, PARALLEL ARMS, TRAILING ARM, STABILIZER BAR, AND FUNCTION-SPECIFIC BUSHINGS	
PERFORMANCE SUSPENSION	UPRATED SPRINGS, STRUT DAMPENERS, AND SUSPENSION BUSHINGS; INCLUDED WITH PERFORMANCE HANDLING GROUP	
STEERING TYPE	POWER-ASSISTED, RACK-AND-PINION WITH CENTER TAKE-OFF FEATURE; SPEED-SENSITIVE VARIABLE- ASSIST STEERING (INCLUDED IN WHEEL AND HANDLING PACKAGE ON ESI; STANDARD ON TSI)	

body/suspension/chassis cont.

STEERING RATIO	17.5:1
STEERING WHEEL TURNS	3.11 (LOCK-TO-LOCK)
TURNING CIRCLE	37.3 ft. (CURB-TO-CURB)
WHEELS	15"x6" STEEL WITH 6-SPOKE FULL WHEEL COVERS (ESI) 16"x7" PACIFICA POLYCAST® (OPTIONAL ON ESI ONLY) 16"x7" CAISSON ALUMINUM ALLOY (TSI)
TIRES	P205/70R15 MICHELIN XGT 4 ALL-SEASON BLACK SIDEWALL STEEL-BELTED RADIAL TOURING TIRES (ESI) P225/60R16 GOODYEAR EAGLE® GA BLACK SIDE- WALL STEEL-BELTED RADIAL TOURING TIRES (TSI) P225/60R16 MICHELIN XGT V4 ALL-SEASON PERFORMANCE V-SPEED-RATED TIRES; INCLUDED WITH PERFORMANCE HANDLING GROUP
BRAKE SYSTEM	DUAL DIAGONALLY SPLIT POWER-ASSISTED HYDRAULIC FOUR-WHEEL DISC BRAKES; PROPOR- TIONING VALVE FRONT-DISC, VENTILATED ROTOR 282 mm (11.1 in.) DIAMETER REAR-DISC, SOLID ROTOR 270 mm (10.6 in.) DIAMETER ANTI-LOCK BRAKE SYSTEM—FOUR CHANNELS, MICROPROCESSOR-CONTROLLED, BRAKE MODULATION 15/sec.
TRACTION CONTROL	MICROPROCESSOR-CONTROLLED, FUNCTIONAL AT 25 mph OR BELOW; IS AN ENHANCEMENT OF THE ITT/TEVES ANTI-LOCK BRAKE SYSTEM; INSTRU- MENT PANEL-MOUNTED ON/OFF SWITCH FEATURE

capacities/weights

	ESI	TSI
FUEL TANK, gal.	18.0	18.0
CRANKCASE, WITHOUT FILTER, qts.	4.5	4.8
CURB WEIGHT, APPROX., lbs.	3379	3497
EPA ESTIMATED MPG CITY/HIGHWAY*	20/28	18/26
EPA HIGHWAY CRUISING RANGE*	504	468

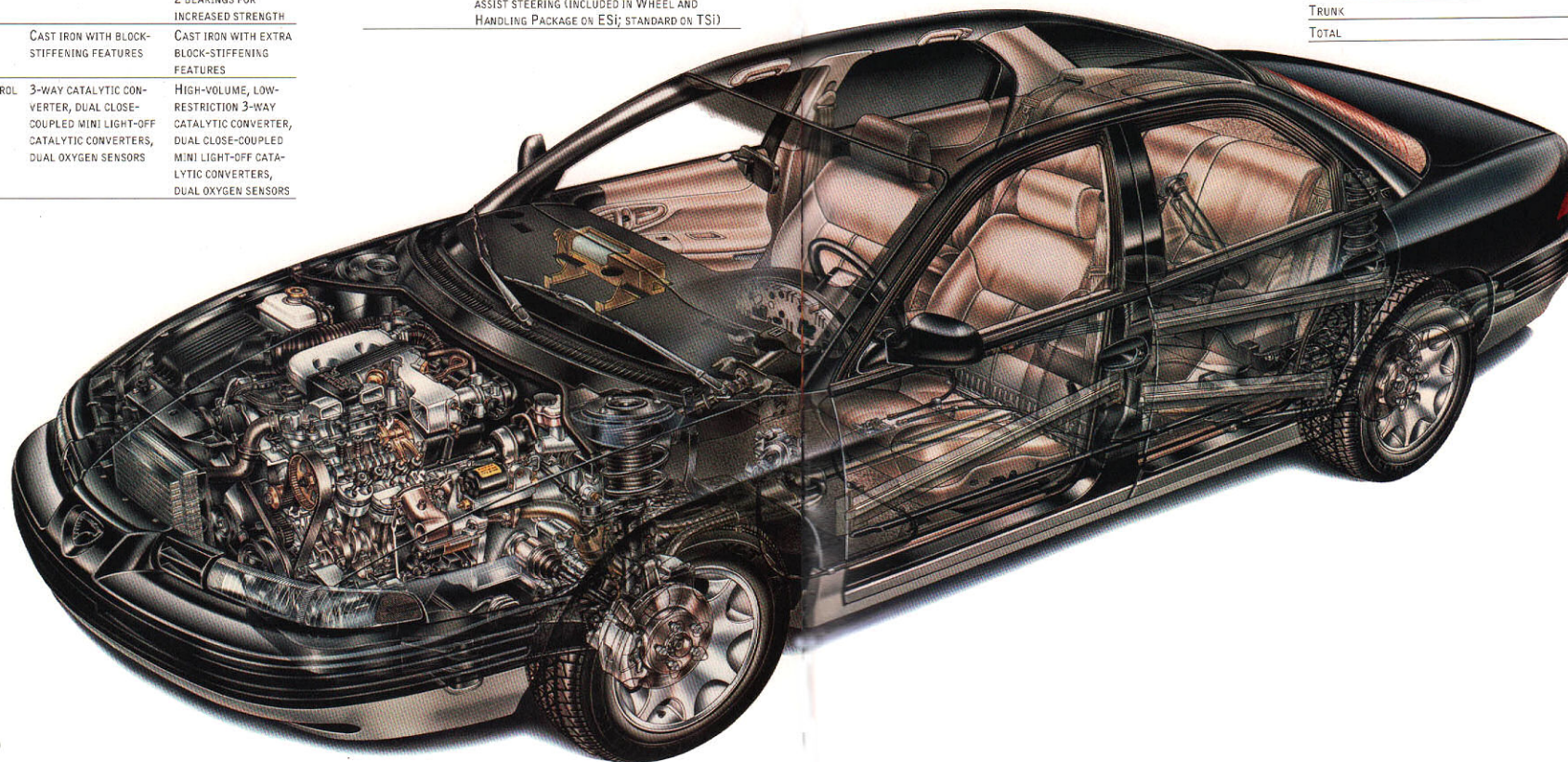
*EPA FIGURES ARE FOR COMPARISON. YOUR RESULTS MAY DIFFER.

dimensions

(INCHES UNLESS OTHERWISE SPECIFIED)

EXTERIOR	
WHEELBASE	113.0
TRACK	
FRONT	62.0
REAR	62.0
OVERALL LENGTH	201.6
OVERALL WIDTH	74.4
OVERALL HEIGHT, AT CURB WEIGHT	55.8
COEFFICIENT OF DRAG RATING (Cd)	0.31 ESI/0.33 TSI
INTERIOR	
FRONT	
HEADROOM	38.4
LEGROOM	42.3
SHOULDER ROOM	59.0
HIPROOM	56.2
REAR	
HEADROOM	37.2
LEGROOM	38.7
SHOULDER ROOM	58.4
HIPROOM	58.7
INTERIOR VOLUMES (cu. ft.)	
PASSENGER	104.1
TRUNK	16.6
TOTAL	120.7

A big reason Eagle Vision is such a technologically advanced and innovative automobile lies in the way it was created. Vision is the product of Chrysler Corporation's platform team concept. This concept became a reality at the remarkable 3.5 million-square-foot Chrysler Technology Center (CTC). It's there that all disciplines of modern auto-making come together to create some of the finest vehicles in the world.



Eagle Vision is built in North America in one of the world's most modern automotive plants. The Bramalea assembly facility features a highly trained workforce, ergonomically engineered work stations, fully robotic welding and exterior painting operations, innovative "doors-off" assembly procedures, and advanced modular construction. The end result? World-class quality in a startlingly new kind of automobile.

features



How can you improve a car as good as Eagle Vision? Simply add one or more of the many Mopar accessories available from your dealer. Above is the removable roof rack with clamp-style ski carrier attachment and bike carrier attachment. Below is the cargo area tray, which makes Vision's spacious 16.6-cubic-foot trunk even more practical to use.



1-VISION ESI	2-VISION TSI	S STANDARD	O OPTIONAL*
functional	1 2		
BRAKES Four-wheel power disc		S S	
Anti-lock brake system			O S
EMISSION SYSTEM California, New York, and Massachusetts emission systems (mandatory and available only in these states)			O O
ENGINE 3.3 litre OHV V6 with electronic multi-point fuel injection		S -	
3.5 litre OHC 24-valve V6 with electronic multi-point fuel injection		- S	
ENGINE BLOCK HEATER			O O
EXHAUST SYSTEM Tuned, stainless steel		S S	
Dual exhaust tips, aluminized		- S	
POWER MOONROOF Includes mini overhead console (deletes full overhead console—late availability)			O O
SPEED CONTROL Steering wheel-mounted controls		S S	
STEERING Speed-sensitive variable-assist power		O S	
SUSPENSION Touring, fully independent		S S	
Performance Handling Group—Includes performance-tuned suspension and P225/60R16 all-season V-speed-rated performance tires (requires traction control and conventional spare tire)			- O
Wheel and Handling Package—Includes 16-inch Pacifica polycast® wheels, P225/60R16 Goodyear Eagle® GA all-season touring tires, and speed-sensitive variable-assist power steering			O -
TIRES P205/70R15 Michelin XGT 4 all-season black sidewall steel-belted touring tires		S -	
P225/60R16 Goodyear Eagle® GA all-season black sidewall steel-belted touring tires			O S
P225/60R16 Michelin XGT V4 all-season V-speed-rated black sidewall steel-belted performance tires			- O
Compact spare, in trunk floor storage well		S S	
Conventional spare			O O
TRACTION CONTROL SYSTEM Low-speed, with instrument panel indicator lights			- O
TRANSMISSION Electronically controlled 4-speed automatic with 4 overdrive, floor-mounted shift lever		S S	
WHEELS 15-inch steel with 6-spoke full wheel covers		S -	
16-inch Pacifica polycast® wheels			O -
16-inch Caïsson aluminum alloy wheels			- S
WIPER/WASHER Windshield, deluxe 2-speed with speed-sensitive variable intermittent feature, wet-arm design		S S	
exterior			
CLADDING Lower bodyside, contrasting-color		S S	
DOOR SEALS 2 full perimeter seals with a third seal above the beltline		S S	
FASCIAS Front and rear, 2-tone		S S	
FOG LAMPS With impact-resistant plastic lenses		- S	
HEADLAMPS Halogen, dual, low-profile aero-composite design, includes headlamp time delay feature of 90 seconds		S S	
HOOD COVER Black vinyl, protects hood edge		M M	
LUGGAGE RACK Decklid-mounted with center high-mounted safety lamp		M M	
MIRRORS Power remote-control with heated and foldaway features, and illuminated switch, black (body-color on TSi)		S S	
ROOF RACK Removable		M M	
With ski carrier attachment		M M	
With bicycle carrier attachment		M M	
TINTED GLASS All windows, includes solar control glass windshield and rear window		S S	
interior			
AIR CONDITIONING Manual, includes side window demisters and CFC-free refrigerant		S -	
Automatic temperature control—adjusts for sunny or cloudy days, includes side window demisters			O S
AUDIO SYSTEM AM/FM electronically tuned stereo cassette player with integral clock and six speakers, includes dynamic noise reduction and auto reverse features		S S	

M MOPAR DEALER-INSTALLED ACCESSORY**	- NOT AVAILABLE	
interior cont.	1 2	
CHRYSLER/INFINITY SPATIAL IMAGING™ SOUND SYSTEM (premium electronically tuned stereo radio with seek/scan, 11 Infinity speakers in 7 locations including center channel speaker, trunk-mounted 120-watt amplifier, 5-band graphic equalizer) with cassette player, includes power antenna and integral clock		O O
CHRYSLER/INFINITY SPATIAL IMAGING™ SOUND SYSTEM (see description above) with compact disc player (replaces cassette), includes power antenna and integral clock		O O
6-disc compact disc changer, mounted in trunk		M M
CARGO AREA Cargo net and tie-down loops		M M
Cargo tray, black, thermoplastic rubber with non-skid floor coating		M M
CONSOLE FLOOR —Includes integral armrest, cup holders, storage bin, coin holder, ashtray with cigarette lighter/auxiliary power access		S S
Heat/air conditioning outlets for rear seat area		S S
OVERHEAD —With compass, ambient temperature, trip odometer, and English or metric readouts for average and instantaneous fuel economy, elapsed trip time, and distance to empty; includes front and rear area reading lamps, storage area for sunglasses and garage door opener; illuminated visor vanity mirrors and twin-blade sun visors with sliding extensions; passenger-assist handles located above doors (Std. ESI) (not available with power moonroof)		O S
DECKLID RELEASE Power remote-control, mounted in glove box		S S
DEFROSTER Rear window with timer feature (required for all passenger vehicles registered in New York state)		S S
DOOR LOCKS Rear, child-protection		S S
INSTRUMENTATION Gauges include tachometer, engine coolant temperature, odometer, resettable trip odometer, speedometer (120 mph), and fuel		S S
Warning lights for attention needed or malfunction in oil pressure, engine temperature, brake system, electrical charging system, low fuel, seat belts, headlamp high beam, and air bag		S S
Message center reports door or trunk ajar, low washer fluid, and when service required for models equipped with anti-lock brakes; features indicator lights for models equipped with traction control		S S
LIGHTS Front and rear reading, glove box, ashtray, ignition halo lamp, underhood, and trunk; front and rear door courtesy lights; includes interior lights fade-out and battery-protection turn-off features		S S
MIRRORS Rearview with day/night feature		S S
Visor vanity mirrors (2) (illuminated on TSi)		S S
Automatic day/night rearview mirror—automatically reduces glare from rear vehicle headlights (requires overhead console on ESI; not available with power moonroof)		O O
POWER DOOR LOCKS With illuminated switches, lock-out prevention feature, and speed-sensitive activation (see dealer)		S S
POWER WINDOWS With illuminated switches and driver's window "one-touch" down feature		S S
REMOTE/ILLUMINATED ENTRY GROUP Includes remote keyless entry feature for locking and unlocking of doors and rear decklid; illuminates interior prior to entry; two transmitters provided		O S
SEATS Front—Premium cloth reclining bucket seats with 2-way adjustable headrests and adjustable driver lumbar support; seatback map pockets		S S
Rear—Contoured bench style rear seat with folding center armrest		S S
Front/Rear—Leather with vinyl trimmed seats with 8-way power adjustable feature for driver and front passenger; includes power recliners		- O
Power 8-way adjustable driver's seat		O S
Power 8-way adjustable driver's and front passenger's seat		- O
Integrated child safety seat—replaces rear seat center armrest and folds away when not in use (requires medium quartz cloth interior; not available with leather interior)		O O



VISION ESI	VISION TSI	
interior cont.	1 2	
SEAT BELTS/SUPPLEMENTAL RESTRAINT SYSTEMS Driver and front passenger air bags; 3-point shoulder/lap belts for front and rear outboard passengers with height-adjustable feature and traveling inboard buckle in front; rear seat center lap belt. Always wear your seat belt.		S S
STEERING WHEEL 2-spoke		S -
Leather-wrapped 2-spoke; includes leather-wrapped shift knob		- S
SUN VISORS Cloth with driver and front passenger covered vanity mirrors		S -
With secondary visor and sliding extension; illuminated vanity mirrors		O S



VISION TSI	VISION ESI/TSI	VISION TSI
interior cont.	1 2	
TILT STEERING COLUMN With multi-function stalk and halo lamp ignition key cylinder switch		S S
VEHICLE THEFT ALARM Flashes headlamps and taillamps, sounds horn, and disables the engine when activated (requires remote entry group and automatic temperature control)		O O

SEAT MATERIAL	VISION ESI/TSI			VISION TSI		
	LAUREL PREMIUM CLOTH	CALF NAP LEATHER WITH VINYL TRIM (OPT.)				
INTERIOR TRIM COLOR	DRIFTWOOD	MEDIUM QUARTZ	SPRUCE	DRIFTWOOD	MEDIUM QUARTZ	SPRUCE
EXTERIOR COLORS						
Bright White	■	■	■	■	■	■
Black	■	■	■	■	■	■
Radiant Red Metallic†	■	■	■	■	■	■
Wildberry Pearl Coat	■	■	■	■	■	■
Bright Platinum Silver Metallic†	■	■	■	■	■	■
Char Gold Satin Glow†	■	■	■	■	■	■
Medium Blue Pearl Coat	■	■	■	■	■	■
Teal Pearl Coat	■	■	■	■	■	■
Orchid Pearl Coat†	■	■	■	■	■	■
Spruce Pearl Coat†	■	■	■	■	■	■
LOWER BODYSIDE TREATMENT						
DARK BODYSIDE	Bright White, Black, Radiant Red Metallic, Wildberry Pearl Coat, Medium Blue Pearl Coat, Teal Pearl Coat, Orchid Pearl Coat, Spruce Pearl Coat					
DARK FERN GRAY	Bright Platinum Silver Metallic, Char Gold Satin Glow					

customer-preferred order system™ option packages						
ENGINE	TRANSMISSION	VISION ESI		VISION TSI		
3.3 LITRE V6	4-SPEED AUTOMATIC	22B	22C	22D		
3.5 LITRE V6	4-SPEED AUTOMATIC				26K	26L 26M
PACKAGE CONTENT * INCLUDED IN PACKAGE S STANDARD						
REMOTE/ILLUMINATED ENTRY GROUP		*	*		S	S S
ILLUMINATED VISOR VANITY MIRRORS		*	*		S	S S
AUTOMATIC TEMPERATURE CONTROL A/C (WITH CFC-FREE REFRIGERANT)		*	*		S	S S
PREMIUM SOUND CASSETTE/EQUALIZER††		*	*		*	*
FULL OVERHEAD CONSOLE			*		S	S S
8-WAY POWER DRIVER'S SEAT			*			
8-WAY POWER DRIVER'S AND PASSENGER'S SEAT					*	*
ELECTROCHROMATIC AUTOMATIC DAY/NIGHT MIRROR			*		*	*
SECURITY ALARM					*	*
TRACTION CONTROL					*	*
LEATHER FRONT SEATS (WITH VINYL TRIM)					*	*
CONVENTIONAL SPARE TIRE					*	*

ALL PRODUCT ILLUSTRATIONS AND SPECIFICATIONS ARE BASED UPON CURRENT INFORMATION AT THE TIME OF PUBLICATION APPROVAL. ALTHOUGH DESCRIPTIONS ARE BELIEVED CORRECT, ACCURACY CANNOT BE GUARANTEED. CHRYSLER CORPORATION RESERVES THE RIGHT TO MAKE CHANGES FROM TIME TO TIME, WITHOUT NOTICE OR OBLIGATION, IN PRICES, SPECIFICATIONS, COLORS, AND MATERIALS, AND TO CHANGE OR DISCONTINUE MODELS. SOME OF THE EQUIPMENT SHOWN OR DESCRIBED THROUGHOUT THIS CATALOG IS AVAILABLE AT EXTRA COST.

colors



Eagle Vision's choice of seat fabrics includes (left to right): Laurel Premium cloth (shown in Driftwood and Medium Quartz) and Leather with Vinyl Trim (shown in Medium Quartz).





We would like you to discover the satisfaction of driving a world-class sports sedan. That's why we're making it so simple to do with The Eagle Test Drive.

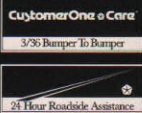
THE EAGLE TEST DRIVE

It's a systematic evaluation designed to demonstrate the cutting-edge technology Chrysler Corporation offers in every Eagle. To set up a test drive, just ask your dealer or call 1-800-2-TEST-EAGLE.


When you do visit your Eagle dealer, you'll meet a team of trained professionals who have made your satisfaction their number one priority. Here's why: Chrysler Corporation and its dealers have made a long-term commitment to outstanding customer service. More than 100,000 dealership management, sales, and service people are participating in the most extensive educational initiative in automotive history. It's called **CustomerOne** and it establishes one unbreakable rule: Treat every customer with honesty and respect.

Every Eagle comes with a comprehensive warranty that includes 3-year/36,000-mile bumper-to-bumper coverage with no deductible (excludes normal maintenance, adjustments, and wear items); 7-year/100,000-mile outer-body rust-through coverage; and Roadside Assistance* for 3 years/36,000 miles providing round-the-clock emergency road service. See limited warranties, restrictions, and details at your dealer. The 3/36 limited warranty is part of the vehicle and transfers to any subsequent owners at no charge during the three-year/36,000-mile term.

Additional peace-of-mind protection for Eagle owners is available through optional Chrysler Service Contracts in a variety of time and mileage combinations that will meet your specific needs.



Chrysler Credit offers a selection of finance programs that can help make your new Eagle even more affordable. These flexible finance and lease programs can be tailored to suit your budget and lifestyle. They include Advantage: Gold Key Lease, **CHRYSLER CREDIT** College Graduate Plans, Retail Financing, and other special payment plans. Ask your salesperson for details.

Chrysler's Automobility Program provides a cash reimbursement toward the purchase and installation  of adaptive driving aids or passenger equipment on new 1995 Chrysler Corporation cars, trucks, and vans. For further information, contact your dealer or Automobility Headquarters at 1-800-255-9877.

*Roadside Assistance provided by Cross Country Motor Club, Inc., and in California by Cross Country Motor Club of California, Inc.



THE EAGLE TEST DRIVE

E A G L E

V I S I O N

I 9 9 5



E A G L E 1 9 9 5

V
I
S
I
O
N



THE EAGLE TEST DRIVE

