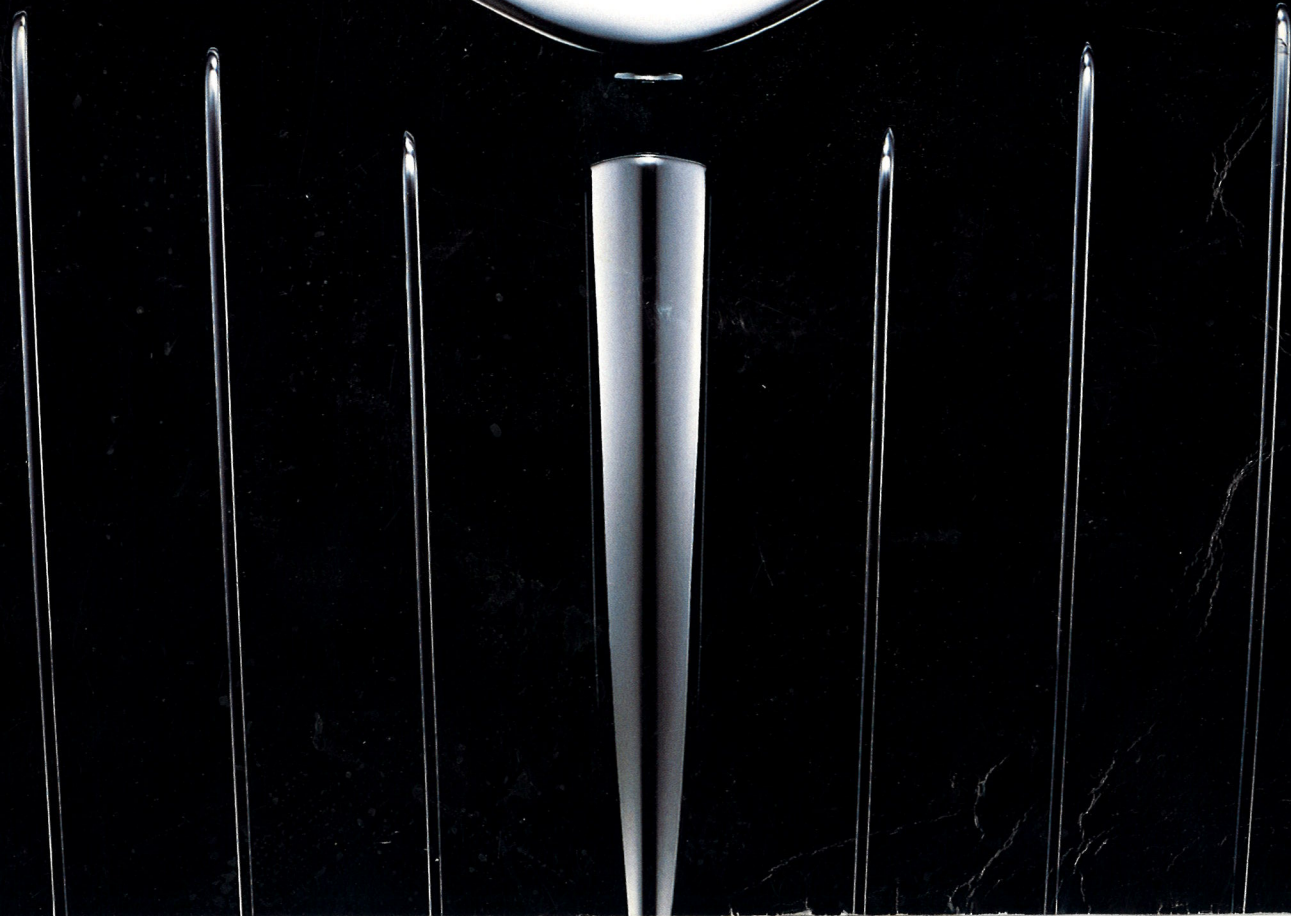


I N F I N I T I M O D E L L I N E



2-3

Introduction

4-5

Q45

6-7

I30

8-9

QX4

10-11

Luxury

12-13

Performance

14-15

Safety

16-17

The Total
Ownership
Experience

18-19

Specifications

20

Accessories



QX4
Luxury Sport Utility Vehicle

I30
Luxury Sedan

Q45
Luxury Performance Sedan



To understand the pulse of today's contemporary lifestyle, Infiniti looked to the heart of people's desires. We found that people expect more from a luxury car than just comfort; they want an entire luxury experience. A feeling that comes with knowing that you've not only invested in one of the best luxury cars in the world, but also in one of the best luxury car companies. One that makes sure you're comfortable with every aspect of ownership. From the feel of the steering wheel, to being treated like an honored guest every time you visit an Infiniti retailer. It's all something known as The Total Ownership Experience[®], a commitment to your satisfaction that comes straight from the heart of Infiniti.



Q45

Infiniti's world-class
flagship, the Q45[®] Luxury
Performance Sedan.

The finest in luxury with
performance.

Standard Model includes:

- Front engine/rear-wheel drive
- 4.1-liter 32-valve aluminum-alloy 266 horsepower V8 engine
- Traction Control System
- Dual front and front-seat side supplemental air bags *(See pages 14-15)*

Also available:

- Q45 Touring Model (Q45t)

To obtain the Q45 brochure,
call **1-800-547-8600** or visit
<http://www.infiniti-usa.com>



I30

An exceptional value.

Flagship styling, space and performance, all for around \$30,000*.

Standard Model includes:

- Front engine/front-wheel drive
- 3.0-liter 190 horsepower 24-valve V6 with 2-stage engine cooling system
- Dual front and front-seat side supplemental air bags

(See pages 14-15)

Also available:

- Leather and Convenience Package with Integrated HomeLink® Transmitter
- I30 Touring Models (I30t)

*MSRP is for standard model I30. Excludes title, tax, license and destination fees. I30 standard model with optional Leather and Convenience Package (shown) priced higher.

To obtain the I30 brochure, call **1-800-547-8600** or visit <http://www.infiniti-usa.com>



QX4

Everything you'd expect from a sport utility vehicle, plus the luxury of an Infiniti, all at an exceptional value.

Standard Model includes:

- Front engine/automatic All-Mode 4WD® system
- 3.3-liter 168 horsepower V6 engine
- MonoFrame® construction with front strut-type, rear 5-link suspension
- Dual front supplemental air bags *(See pages 14-15)*

Also available:

- Sunroof Preferred Package
- Premium Sport Package

To obtain the QX4 brochure, call **1-800-547-8600** or visit <http://www.infiniti-usa.com>



INFINITI LUXURY At Infiniti, we see the road to happiness as comfort and functionality. A road that begins in basic ergonomic design. You can see it in the way the steering wheel fits your hands. Or the way every dial and button is arranged to be soothing to the eye and easy to understand. The result is an environment that's luxurious even before you experience any of the many luxuries >

it contains. Luxuries like power adjustable front seats. Automatic climate control systems. Available leather-appointed interiors. Custom-designed AM/FM Bose® audio systems with in-dash CD and cassette players. The list goes on and on. Just like our commitment to creating the most luxurious cars in the world, as well as the most satisfied owners. ∞



INTERIOR

Every Infiniti is spacious enough for five, with many features that make riding in one as comfortable as driving one. Like plush carpeting. Convenient front and rear arm rests. And an available supple leather-appointed interior.

< (I30 shown)



CUSTOM BOSE® AUDIO SYSTEMS

Infiniti directly with Bose® to create audio systems that complement the acoustics of each Infiniti's interior environment. The result is pure sound reproduction that will appeal to even the most discriminating ears.

< (Q45 shown)



AUTOMATIC CLIMATE CONTROL SYSTEMS

Every Infiniti allows you to tailor your own personal climate. Simply set the desired interior temperature and the system does the rest. And if you're curious about what's going on outside your world, Infiniti also includes an ambient temperature display.

< (I30 shown)

ERGONOMICS

The interior of an Infiniti is an ergonomic masterpiece. Every detail, button and knob is carefully placed to create an environment that's not only easy on the eyes, it's easy to use and understand.

(Q45 shown) >



POWER ADJUSTABLE FRONT SEATS

To provide maximum comfort, the front seats of every Infiniti allow you to tailor your seat position at the touch of a button. A feature that's convenient for reducing fatigue on daily commutes as well as on long trips.

(I30 shown) >



INFINITI PERFORMANCE One of the luxuries of owning an Infiniti is the luxury of performance. A feeling that comes from driving one of the best-engineered cars on the road. With exteriors that are as aerodynamic as they are beautiful. Engines that are as powerful as they are practical. And suspensions that give you command of the road, while providing all the comfort >



Q45 LUXURY PERFORMANCE SEDAN

Infiniti's flagship Q45. A luxury car with performance features you'd expect from a sports car. A 4.1-liter 32-valve V8 engine. Electronic sequential multi-point fuel injection. An independent front strut-type suspension. Even an optional sporty Touring Model. And much more.




INDY ENGINE

Another benefit of owning an Infiniti is a feeling of pride. Because Infiniti is one of only two suppliers to the Indy Racing League and the Indianapolis 500. In fact, the Infiniti Indy Engine is based on the same design as the engine in the Q45.

I30 LUXURY SEDAN

The I30[®] offers superior performance in addition to flagship styling, all at an affordable price. With features like a 3.0-liter V6 engine, electronically controlled engine-speed-sensitive steering and available Touring Models, there's very little separation between you and the head of the pack.



you'd expect from a luxury vehicle. And it's all supported by advanced engine technologies. Like lightweight components that are constructed entirely out of aluminum. Sound-deadening materials that help reduce extraneous noise. And sophisticated Engine Control Modules that help make each Infiniti as fuel efficient and environmentally-friendly as it is fun to drive. 

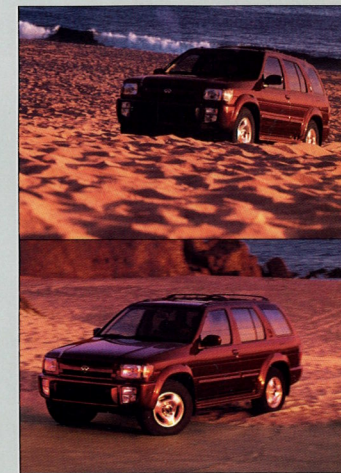


QX4 LUXURY SPORT UTILITY VEHICLE

The QX4[®] offers all you'd expect in a sport utility vehicle plus one thing you might not: the luxury of an Infiniti. With performance features like a 3.3-liter V6 engine, MonoFrame[®] construction, independent front strut-type suspension and Infiniti's ground-breaking automatic All-Mode 4WD[®].

QX4's AUTOMATIC ALL-MODE 4WD[®]

The QX4 features one of the world's most advanced 4-wheel drive systems ever installed in a consumer vehicle: All-Mode 4WD[®]. A system so advanced, when set on AUTO it automatically shifts between 2-wheel drive and 4-wheel drive, infinitely varying the power between the front and rear wheels to match road conditions. Which makes handling the QX4 not just pleasurable, but effortless.



INFINITI SAFETY Infiniti not only wants to protect you during a collision, we want to help you avoid one altogether. That's why every Infiniti comes equipped with active safety features like a powerful engine, responsive steering and 4-wheel ABS brakes. Of course, should you ever run into the unavoidable, take comfort in the knowledge that every Infiniti features a wide >



INTEGRATED HOMELINK® TRANSMITTER

Integrated into the visor of the Q45, I30* and QX4 are 3 buttons you can program to activate radio-controlled devices. Like your garage door opener, electric gate, even your home alarm and lighting systems.**

* Not available on I30 standard model.
** HomeLink® home lighting system required for use.

AIR BAGS

Infiniti is one of the first to install dual supplemental front and side air bags† in both the Q45 and the I30. Now, in certain front or side collisions, the severity of the impact to the driver and front seat passenger may be reduced. Dual front air bags standard on the QX4.

(Q45 shown) >



† Inflated air bags shown for illustration only. Actual air bag deflates after deployment.

Air bags can save lives and prevent injuries. However, to avoid injury from an inflating air bag, rear facing child restraints must never be placed in the front passenger seat. Infiniti and the federal government recommend that children 12 and under ride in the rear seat. Children should be properly secured in a child restraint, booster seat or seat belt according to their size. Remember, the risk of serious or fatal injury to children in automobile accidents can be reduced with a properly installed child restraint. In some cases — you may also need a locking clip, supplemental buckle/belt or tether strap to install the child restraint correctly. This is especially true with older vehicles on the road today. Before you install a child restraint in your vehicle, please consult your Infiniti owner's manual to see if your vehicle requires an additional part. You should also study the child restraint manufacturer's instructions for the correct routing of the seat belt.

REMOTE KEYLESS ENTRY AND VEHICLE SECURITY SYSTEM

Infiniti's remote keyless entry and vehicle security system lets you lock and unlock your doors, pop the trunk, even activate a panic alarm. All from a distance of up to 45 feet.

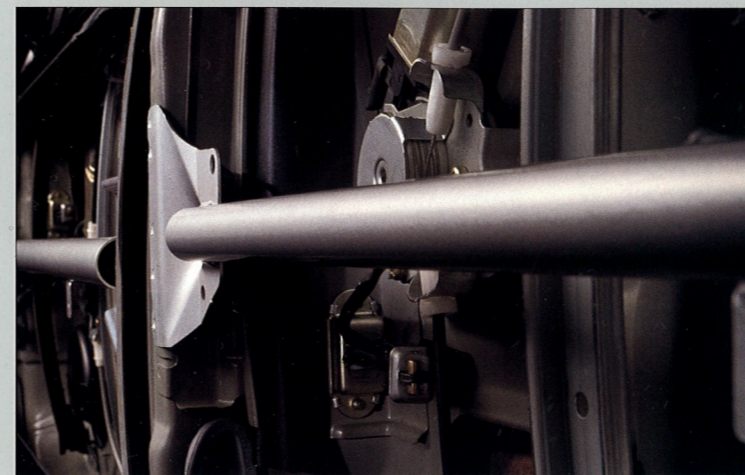
(Q45 shown) >



4-WHEEL ABS BRAKES

Infiniti's anti-lock braking system not only allows you to stop quickly, it helps you to maintain better steering control while braking. During an emergency driving situation, this could be an important advantage.

< (QX4 shown)



SIDE-DOOR GUARD BEAMS

When you drive an Infiniti, you can feel confident that safety is on your side. In fact, it's on both of your sides. Because built into each door is a pipe-style guard beam that's designed to help reduce the chance of injury during certain side impacts.

THE TOTAL OWNERSHIP EXPERIENCE Before the shape of the very first Infiniti was molded from a common piece of clay, an idea inspired the engineer. An idea that luxury is more than just a car, it's an experience that must be translated through every aspect of ownership. From the sound of the door locks, to the way you're treated when you visit an Infiniti retailer. >

FROM THE START

Infiniti set out to design luxury vehicles that totally satisfy you. From the way the steering wheel feels in your hands to the way you feel just being an owner.



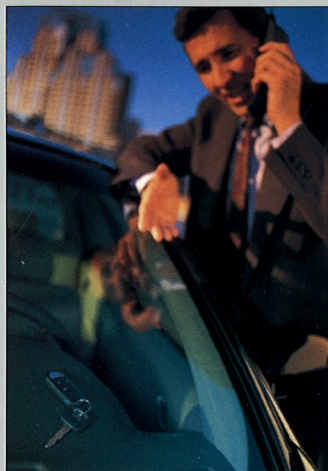
THE INFINITI TOTAL OWNERSHIP EXPERIENCE COMMITMENT

- A superior product representing excellent value
- Presented in a unique environment
- To honored guests who are treated with respect during the buying process
- Who receive outstanding service throughout ownership
- And enjoy an ongoing relationship with knowledgeable people who are committed to ensuring their satisfaction.

24-HOUR ROADSIDE ASSISTANCE*

When you own an Infiniti, help is always just a toll-free call away. Call anytime. Even if you just lock yourself out, we'll be there.

*Service Coverage Limited Term (4 years/unlimited miles).



TRIP INTERRUPTION BENEFITS*

If your Infiniti becomes mechanically disabled over 100 miles from home, you're not alone. As long as the problem is covered under the Basic New Vehicle Limited Warranty, we'll do everything we can to keep it from spoiling your trip. Including paying for meals, lodging and alternate transportation.



Because at Infiniti, our goal isn't just to create some of the finest luxury vehicles in the world, it is to create a sense of satisfaction in every person who owns one. Whether that means driving 100 miles to fix a tire or simply cleaning your vehicle every time you drop it off for scheduled service. It's all part of the experience of owning an Infiniti, something we call The Total Ownership Experience. ∞

FREE LOAN CAR PROGRAM**

Every time you bring in your Infiniti for a scheduled maintenance appointment, we'll arrange to have a free loan car waiting for you. And when you return, you'll not only find your Infiniti in working condition, you'll find it clean inside and out.

** Subject to availability. At participating Retailers. Must be 21 years of age or older with valid U.S. driver's license and must provide proof of primary insurance. Available only during Basic New Vehicle Limited Warranty (4 years/60,000 miles).

WARRANTY

Infiniti offers one of the best warranty packages in the industry. Every Infiniti is backed by a 4-year/60,000-mile Basic New Vehicle Limited Warranty. A 5-year/50,000-mile New Vehicle Emission Control Warranty. A 6-year/70,000-mile Limited Powertrain Warranty. And a 7-year/unlimited-mileage Limited Corrosion Warranty.

See your local Infiniti retailer for details. Other warranties may apply.



MODEL LINE SPECIFICATIONS

Q45



- Front engine/rear-wheel drive
- 4.1-liter 32-valve aluminum-alloy 266 horsepower V8 engine
- Front strut-type, rear multi-link suspension
- Traction Control System
- ABS brakes
- Alloy wheels
- Dual front and front-seat side supplemental air bags *(See pages 14-15)*

- 3-point ALR/ELR seat belts with pre-tensioners
- Driver and front-passenger 10-way power seats with lumbar support
- CFC-free air conditioning with automatic temperature control
- 200-watt, 8-speaker Bose® audio system with in-dash CD player and cassette
- Integrated HomeLink® Transmitter
- Plush leather seating surfaces

- Remote keyless entry and vehicle security system with Infiniti Personal Protection System
- Center console with dual level storage and 12-volt power supply
- Power sliding and tilt sunroof
- Vehicle-speed-sensitive intermittent windshield wipers
- 2-driver seat memory system
- Rear center armrest with storage and dual cupholders
- Also available: Q45 Touring Model (Q45t)

I30



- Front engine/front-wheel drive
- 3.0-liter 190 horsepower 24-valve V6 with 2-stage engine cooling system
- Electronically-controlled automatic transmission
- Rear Multi-Link Beam® suspension
- ABS brakes
- Dual front and front-seat side supplemental air bags *(See pages 14-15)*

- Engine-speed-sensitive steering
- CFC-free air conditioning with automatic temperature control system and ambient display
- 200-watt, 6-speaker Bose® audio system with in-dash CD player and cassette
- Pass-through compartment to the trunk
- Remote keyless entry and vehicle security system
- Power adjustable front seats with lumbar support
- Variable intermittent windshield wipers

- Five passenger seating
- Power windows with driver-side one-touch auto-down feature
- Cruise control with steering wheel mounted controls
- Power door locks with selective unlocking
- Illuminated entry/exit fade-out system
- Power trunk and remote fuel-filler door releases
- Also available: Leather and Convenience Package I30 Touring Models (I30t)

QX4



- Front-engine/automatic All-Mode 4WD® system
- 3.3-liter 168 horsepower V6 engine
- MonoFrame® construction with front strut-type, rear 5-link suspension
- Rack-and-pinion steering
- 4-wheel ABS brakes
- 16" alloy wheels
- Dual front supplemental air bags *(See pages 14-15)*

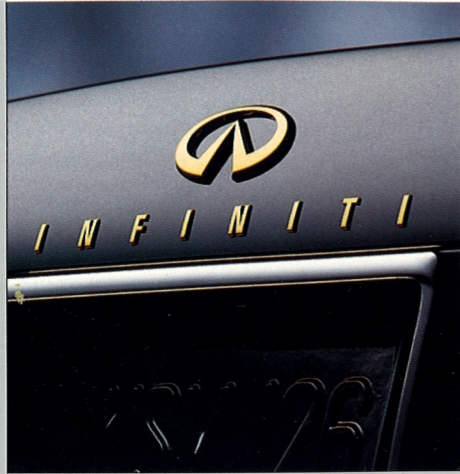
- Remote keyless entry and vehicle security system
- Integrated HomeLink® Transmitter
- Plush leather seating surfaces
- Power adjustable front seats
- CFC-free air conditioning with automatic temperature control
- 150-watt, 6-speaker Bose® audio system with in-dash CD player and cassette
- 5,000-lb. towing capacity

- Tilt steering column
- Rear 60/40 fold-down seat and fold-down center armrest
- Remote fuel-filler door, hood and liftgate releases
- Variable intermittent windshield wipers
- Intermittent rear liftgate glass wipers
- Also available: Sunroof Preferred Package, Premium Sport Package

ACCESSORIES Infiniti offers a variety of accessories that will allow you to personalize your vehicle. From a sporty rear decklid spoiler, to a 6-disc CD autochanger for your listening pleasure, or a bicycle rack for your weekend getaways, Infiniti has an accessory designed for your vehicle that's suited to your lifestyle. To find out more, just ask your Infiniti retailer. ∞



a



b



c



d



e

INFINITI RETAILER-INSTALLED ACCESSORIES	Q45	I30	QX4
Air bag anti-theft bolt	■	■	■
Air conditioning filter			■
Audio: 6-disc CD autochanger †(d)	■	■	■
Battery warmer	■	■	
Bike rack (hitch mount)			■
Bike rack (roof mount)			■
Carpeted rear cargo mat			■
Cargo area protector			■
Cargo organizer †(c)			■
Cellular phone docking station*	■	■	
Cellular phone (in-dash) with optional handset		■	
Convenience floor net			■
Engine heater	■	■	■
Gold badging †(b)	■	■	
Hood bug deflector †(e)			■
Mobile Communicator™ cellular phone	■		
Nose mask			■
Rear spoiler	■	■	
Rear window wind deflector			■
Side window deflectors	■		■
Ski bag		■	
Ski/Snowboard combination rack (roof mount)			■
Ski rack attachments (roof mount):			
• 4 pair diagonal			■
• 6 pair flat			■
Soft cargo carrier			■
Splash guards	■	■	
Sunroof wind deflector †(a)	■	■	■
Towing hitch (class 3)			■
Trunk mat	■	■	
Vehicle cover (cable lock option)	■	■	■
Wheel locks	■	■	■

* For use with most Motorola® MicroTec® cellular phones only.
† Shown.

ONE FINAL OPTION TO CONSIDER: INFINITI FINANCIAL SERVICES

Instead of going to a bank to finance your Infiniti, come directly to us, Infiniti Financial Services. We offer competitive retail rates for our new and pre-owned vehicles, as well as a tempting Signature Lease program. And since you'll be part of the Infiniti family, you'll be treated as such. With courtesy and respect.

To ensure that every Infiniti owner experiences the same high level of driving enjoyment, our standard equipment includes many features that other manufacturers consider optional. For a more complete specification listing or additional financial information, visit our website at <http://www.infiniti-usa.com> or see the Q45, I30 and QX4 comprehensive brochures available at your Infiniti retailer or by calling 1-800-547-8600.

Infiniti Division of Nissan Motor Corporation U.S.A. and your local Infiniti retailer strongly encourage you to use your seat belt/shoulder belt whenever you drive. Please ask all of your passengers to buckle up too, especially children. And with children, make sure they are secure in an appropriate child restraint. Every Infiniti is equipped with dual front air bags. (The I30 and Q45 also come equipped with front-seat side air bags.) Used in conjunction with the 3-point seat belts, they help reduce the risk or severity of injury in certain frontal impacts (as well as certain side impacts in the I30 and Q45). Please keep in mind, however, that air bags are a supplemental restraint system designed to work in conjunction with your seat belt. With a passenger side front air bag, please be aware that a rear-facing child restraint must not be placed in the front passenger seat and should only be used in a rear seat. Always follow the child restraint manufacturer's instructions. See the vehicle owner's manual for details on proper seat belt and child restraint use.

All illustrations, photographs and specifications in this catalog are based on the latest product information; some vehicle parts cannot be shown in certain photographs. Some vehicles shown with optional equipment. See actual vehicles for complete accuracy. Infiniti Division of Nissan Motor Corporation U.S.A. reserves the right to make changes at any time, without notice, in prices, colors, materials, equipment, specifications and models, and to discontinue models or equipment. All Q45, I30 and QX4 vehicles shown are 1998 models. Availability and delivery time for particular models or equipment combinations may vary. For information on availability, additional options or accessories, contact your Infiniti retailer. All specifications, options and accessories shown in this catalog apply in the 49 continental states. Specifications, options and accessories may differ in Hawaii, U.S. territories and other countries. Bose® is a registered trademark of the Bose Corporation. HomeLink® is a registered trademark of Prince Corporation. Motorola® and MicroTac® are registered trademarks of Motorola, Inc.

<http://www.infiniti-usa.com>

INFINITI.

OWN ONE AND YOU'LL UNDERSTAND.

