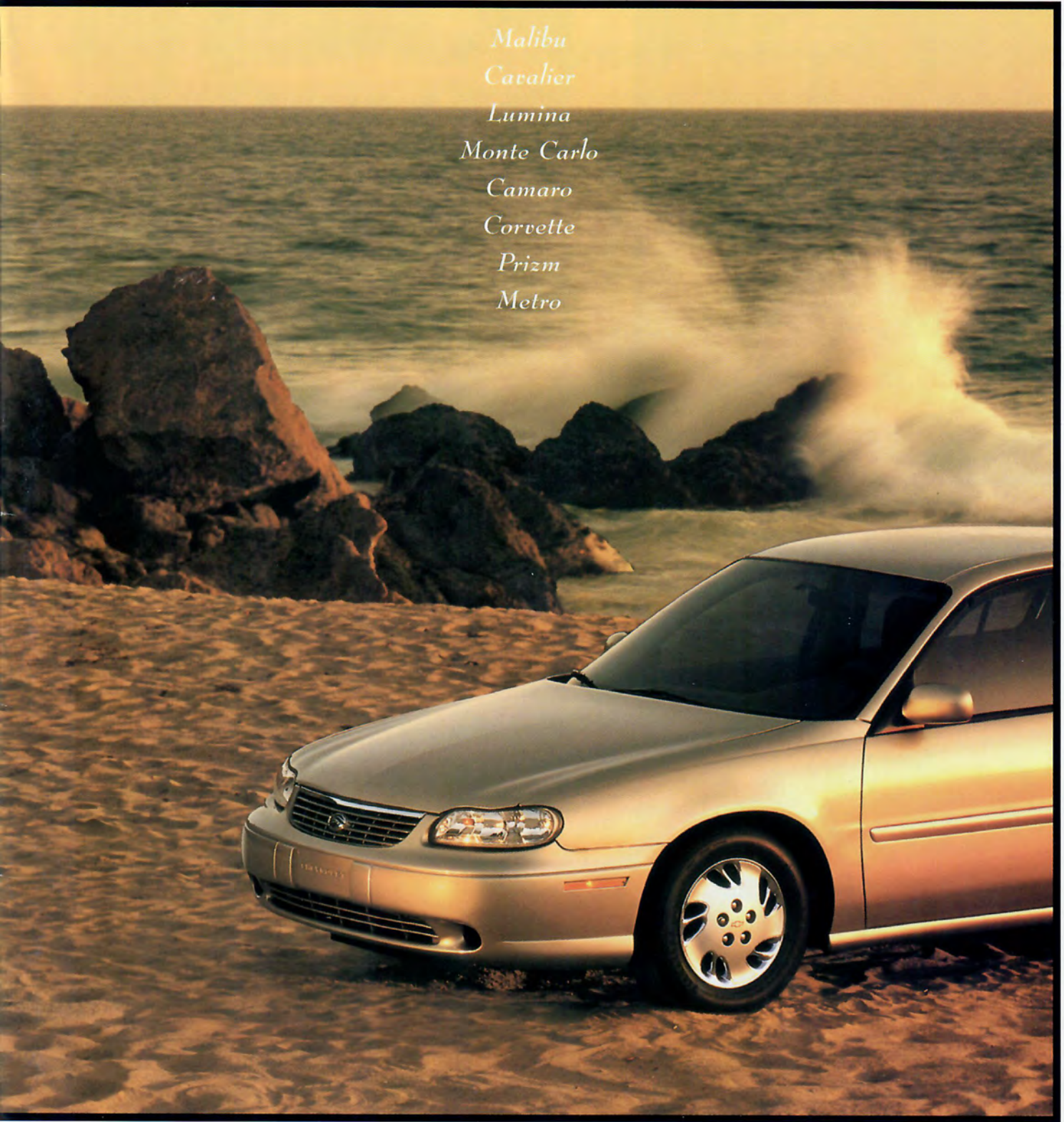


1998 Chevrolet

Malibu
Cavalier
Lumina
Monte Carlo
Camaro
Corvette
Prizm
Metro



*Genuine Chevrolet.
The Cars More Americans Trust.*

For more than 80 years, people have trusted Chevrolet to get them to the places and people they want to see most. Chevy is — in so many ways — an American tradition.

If you seek real value in a car you can trust, you'll like what you see in a 1998 Chevrolet. The choices are many, the quality is impressive, and the driving is fun. Simply put, you get a lot for your money in a Chevy.

When you drive a 1998 Chevrolet, you're also covered by Genuine Customer Care. It includes a great GM limited warranty and 24-hour Roadside Assistance. We'll be there when you need us. That's a promise.

For a Chevrolet brochure of your choice, or to locate the nearest Chevrolet dealer, call 1-800-950-2438. Or visit us on the Internet at <http://www.chevrolet.com>



Proud sponsor  of US Soccer



Malibu — pages 4-5



Camaro — pages 12-13



Cavalier — pages 6-7



Corvette — pages 14-15



Lumina — pages 8-9



Prizm — pages 16-17



Monte Carlo — pages 10-11



Metro — pages 18-19

Malibu. The Car You Knew America Could Build.

Americans have a thing for excellence. Our national obsession is not only to be the best, but to build the best. Which brings us to Malibu, the new-generation, five-passenger sedan from Chevrolet.

Excellence That's Getting Noticed
Chevy Malibu is making a big impression on people who know cars. "A Best Buy," said one

consumer magazine. "Best-In-Class" declared another. More than one publication has noted the large price advantage over Camry and Accord.*

The Features You Want

Every Malibu comes with standard air conditioning, 4-speed automatic transmission, anti-lock brakes, a totally passive theft-deterrent system and AM/FM stereo sound system.



Malibu Sedan in Sandrift Metallic.

Make Your Own Comparison

We invite you to compare Malibu with any other midsize car. You'll find quality you can depend on from a name you can trust — Genuine Chevrolet. Welcome to Malibu. It's the car you knew America could build.

**Based on 1997 MSRP. 1998 prices not available at time of printing.*



Malibu Sedan in Dark Cherry Metallic with optional aluminum wheels.





*Cavalier LS Sedan in Cayenne Red Metallic.
Some optional equipment shown.*

Cavalier. The Car That's Easy To Own.

Some people get what they pay for. Others get much more. Cavalier owners, for example. Cavalier is easy to own. It has the features you need. You get a wide choice of models. All for a price that's Genuine Chevrolet.

Thoughtfully Designed For You

Considerate features in every Cavalier include a totally passive theft-deterrent system and battery-rundown protection that shuts off interior lights should you forget to do so. Just as important, Cavalier is designed to last. Protection against corrosion is enhanced by the use of two-side galvanized steel; and you can travel up to 100,000 miles before the first scheduled tune-up.*

A Comprehensive Safety Package

The standard Cavalier safety package includes a four-wheel anti-lock brake system (ABS) and Daytime Running Lamps.

Cavalier is easy to own, and it has quality you can depend on. No wonder *Consumers Digest* has honored Cavalier with a "Best Buy" rating for three years running.†

*Maintenance needs vary with different uses and driving conditions. See owner's manual for more information.

†1995, 1996 and 1997 model years.



Cavalier RS Coupe in Green Metallic. Some optional equipment shown. Bike rack not included.



Cavalier Z24 Convertible in Black, shown with Liz Punsalan and Jerod Swallow, champion ice dancers and winners of a 1997 Cavalier Convertible for scoring the most "Perfect 6" scores in national competition. Chevrolet is the Official Vehicle of the U.S. Figure Skating Team.



Discover The Chevrolet Lumina



*Lumina LS Sedan in Light Pewter Metallic.
Some optional equipment shown.*

Lumina. Quality You Can Depend On.

Lumina Sedan is the spacious, six-passenger Chevrolet you can depend on, day after day, year after year. And, in your busy life, that's a lot less to worry about.

Award-Winning Quality

For three years in a row, Lumina has won *Consumers Digest's* "Best Buy" award.* We're also proud to say that Lumina is one of the best-selling sedans in America. Lumina means quality, and the word is getting around.

Value That's Genuine Chevrolet

Standard in every Lumina: a responsive 3100 V6 engine, air conditioning, automatic transmission, power door locks and a theft-deterrent system. And, for ease of ownership, your new Lumina can travel up to 100,000 miles before the first scheduled tune-up.†

Safety For Your Family

For your peace of mind, Lumina features child security rear-door locks, a lockout switch for the available power windows and an integrated child safety seat option. Fact is, few cars offer as many safety features for the money.

**1995, 1996 and 1997 model years.*

†Maintenance needs vary with different uses and driving conditions. See owner's manual for more information.



Lumina LTZ Sedan in Light Pewter Metallic with new machined-face aluminum wheels and other options. The 3800 Series II V6 engine is a new option this year.



Lighter Quality Not Cheaper



*Monte Carlo Z34 Coupe in Torch Red.
The machined-face 16" aluminum wheels are new for 1998.*

Monte Carlo. Where Artistry Meets Performance.

In a world of look-alike cars, Monte Carlo defies convention with its classic, personal style. Here's a car that reflects your own good taste and your appreciation for fine, well made things.

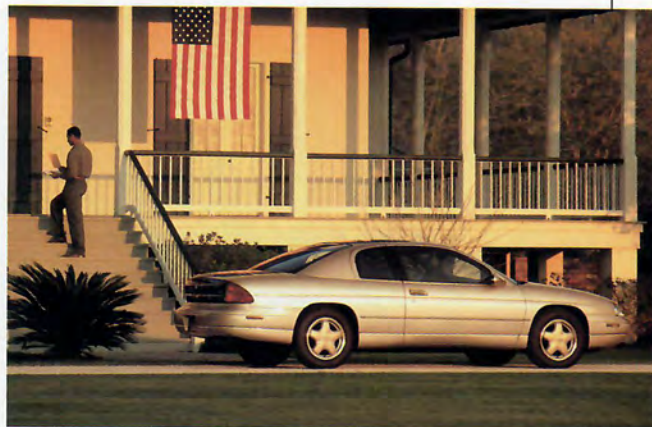
The Artistry of Monte Carlo

Monte Carlo is the sleekly shaped coupe that is absolutely contemporary, yet truly timeless. And, inside Monte Carlo, prepare to be surrounded by thoughtful appointments and the luxury of your own personal space.

The Performance in Monte Carlo

There's another side to this Chevrolet coupe just waiting to get out. Thanks to a carefully tuned chassis and four-wheel independent suspension, Monte Carlo will cling to a twisty piece of two-lane with balanced precision. Monte Carlo LS is powered by a responsive 3100 V6, and Monte Carlo Z34 now features GM's acclaimed 3800 Series II V6 under its sleek hood. Monte Carlo is — in a word — fun.

Two great automotive traditions — classic beauty and assertive performance — come together seamlessly in Monte Carlo. And, the side you show the world is up to you.



Monte Carlo LS Coupe in Light Driftwood Metallic with optional 16" aluminum wheels.



Camaro Coupe in Black. Some optional equipment shown.



*Camaro Coupe in Black.
Some optional equipment shown.*

Camaro. It's Ready When You Are.

There's nothing quite like the style — or the sound — of an honest, powerful sports car. And, Chevy Camaro is ready when you are. The '98 look is new, and very cool. Significantly, this is a re-engineered, highly refined Camaro.

The Affordable Fun Machine

On the “bang for the buck” meter, there's just no catching the 3800-powered Camaro. Features include the acclaimed 200 hp V6, a tuned suspension and 4-wheel disc brakes with Bosch ABS. Choose from a Coupe, T-Top Coupe or Convertible.

Big News For Z28 Fans

The Camaro Z28 legend will grow stronger in 1998, thanks to the 305 hp LS1 V8 under its sleek hood. One drive and you'll agree: This new Z28 will have some would-be competitors running for cover.

For those who can't get enough of a wild thing, there's Camaro SS. It's back ... and it's hotter than ever.



Camaro Z28 Coupe in Navy Blue Metallic. New for 1998: the 305 hp LS1 V8 engine and four-wheel disc brakes with Bosch ABS.



The Camaro SS Convertible in Bright Red. SS features include special wheels, unique hood, tuned suspension and a high-output version of the LS1 V8 engine.

Corvette. America's Sports Car.

You look. Then you look again. Corvette has that effect.

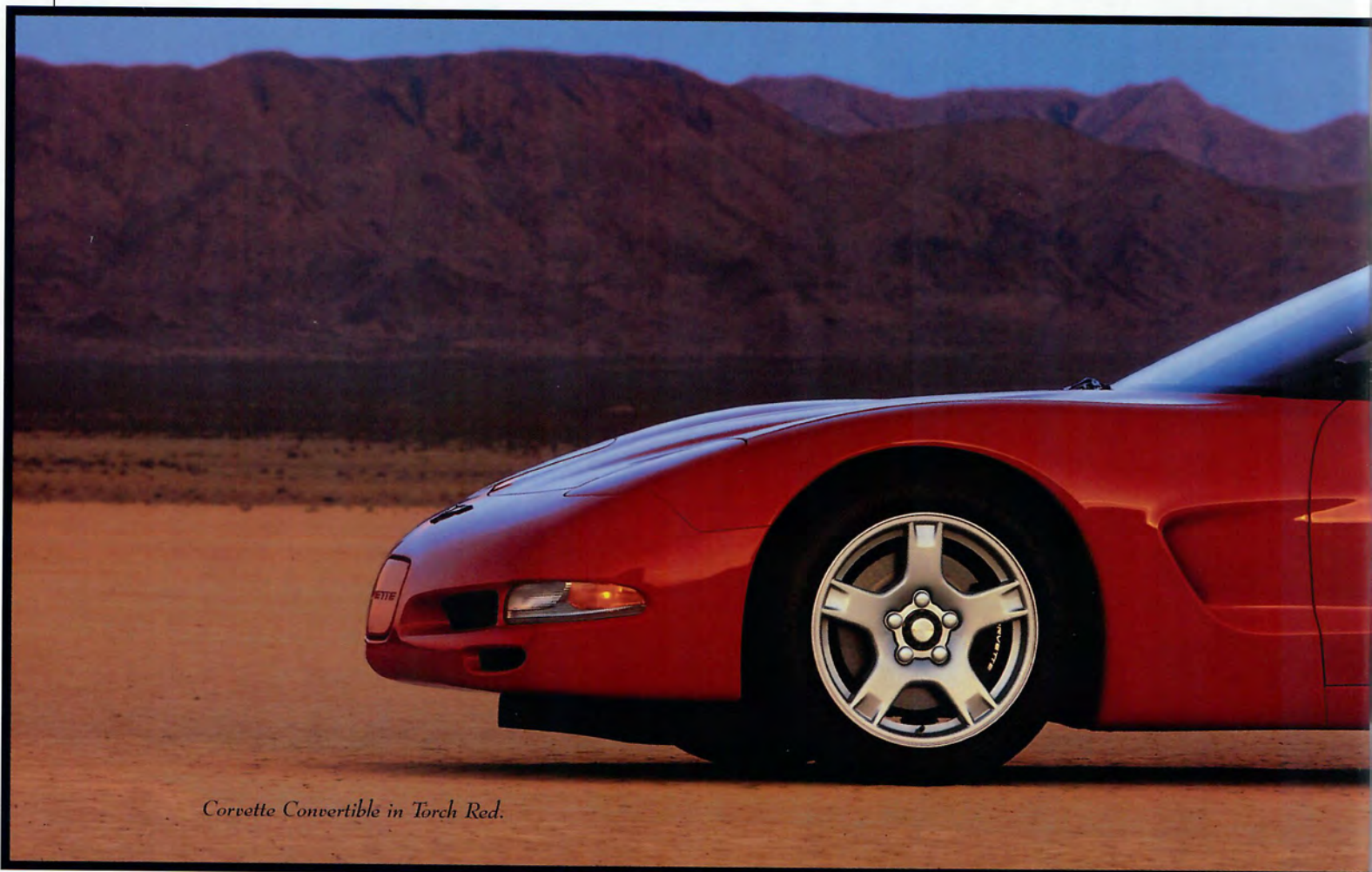
The Car Everyone's Talking About

"It is a superb car, fully competitive with absolutely anything in its segment," declares *Automobile Magazine*. "America's most beloved sports car truly has become world class," says *Motor Trend Magazine*.

Coupe, Or Brand-New Convertible?

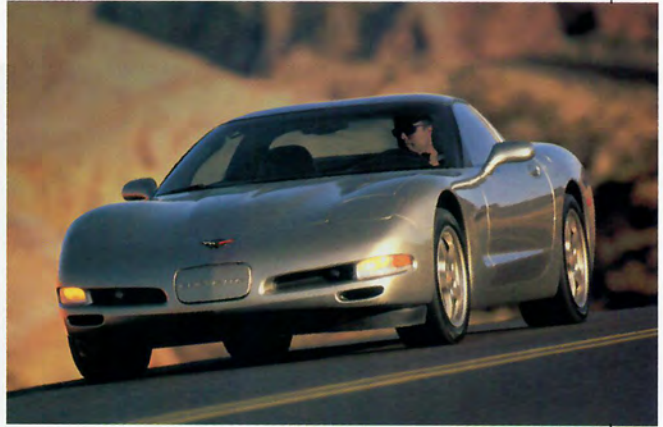
For 1998, you can choose from the coupe, with its stunning fastback style and one-piece removable roof panel. Or, the dramatically new convertible. It will have you forgetting anything else you've ever driven.

If you have a passion for performance, Corvette speaks your language.



Corvette Convertible in Torch Red.

The New Drive. Relax. It's In. The Drive.



Standard equipment in every Corvette includes a 345 hp, LS1 V8 engine, Traction Control, speed-sensitive power steering and leather seating surfaces. This is the coupe.





*Prizm Sedan in Black Mist Metallic
with optional alloy wheels.*

The New Prizm. Relax. This Is One Great Car.



Introducing Chevrolet Prizm for 1998.

It's the newest version of the affordable small sedan that's been voted a *Consumers Digest* Best Buy for the past five years in a row.*

Quality In Every Detail

From Prizm's sophisticated, quiet style to its enhanced roominess and comfort, you will see designed-in quality in every detail. An all-new, 1.8 Liter engine (with dual overhead camshafts) provides a smooth flow of power. The body structure is stiffer and the suspension is retuned. This contributes to the quiet ride and confident road manners of this great new car.

A New Level Of Safety

Standard: Next Generation driver and front-passenger air bags,[†] Daytime Running Lamps and a safety cage surrounding the entire passenger compartment. New driver and front-passenger *side* air bags and anti-lock brakes are optional.

The New Prizm: Believe In It

The Prizm philosophy: a car should be reliable and affordable, with the safety features you need. Relax, we would never change that.

*1993 through 1997 model years.

[†]Always wear safety belts, even with air bags.



*Metro Coupe in Wildfire Red.
Some optional equipment shown.*

Chevy Metro. Low Price, High MPG.

You've probably got better things to do with your time and money than to spend them at the gas station. That's why there's Metro. The lowest-priced, highest mileage* Chevy of all.

Sedan or Coupe? You Decide

There's a hatchback coupe for coupe-type people and a four-door sedan for sedan-type people.

And, no matter which one catches your fancy, we'll throw in a great GM limited warranty and Roadside Assistance. After all, whoever said an affordable car had to be just bare bones?

Metro Is Built To Last, Too

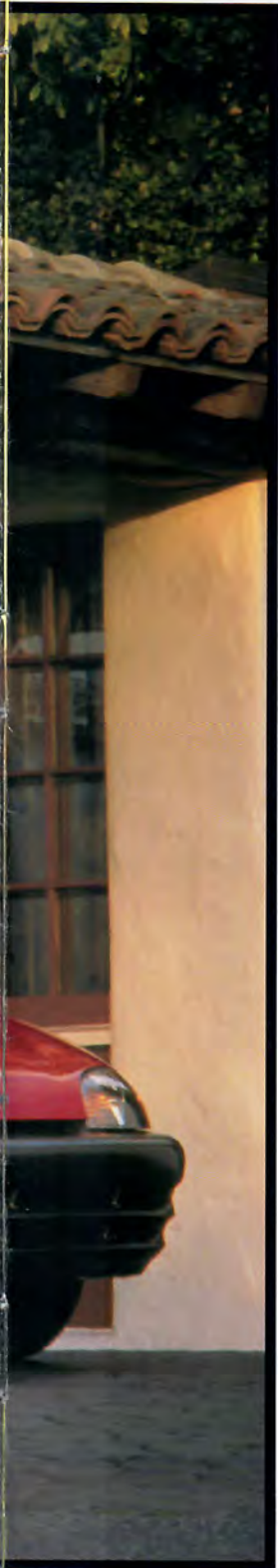
There are no scheduled timing belt or fuel filter changes for up to 100,000 miles.† Smart little extras like weather-tight electrical connectors help Metro steer clear of power failures. And, Metro even comes with an 11-step paint process and super strong rust protection to keep this little beauty ... beautiful.

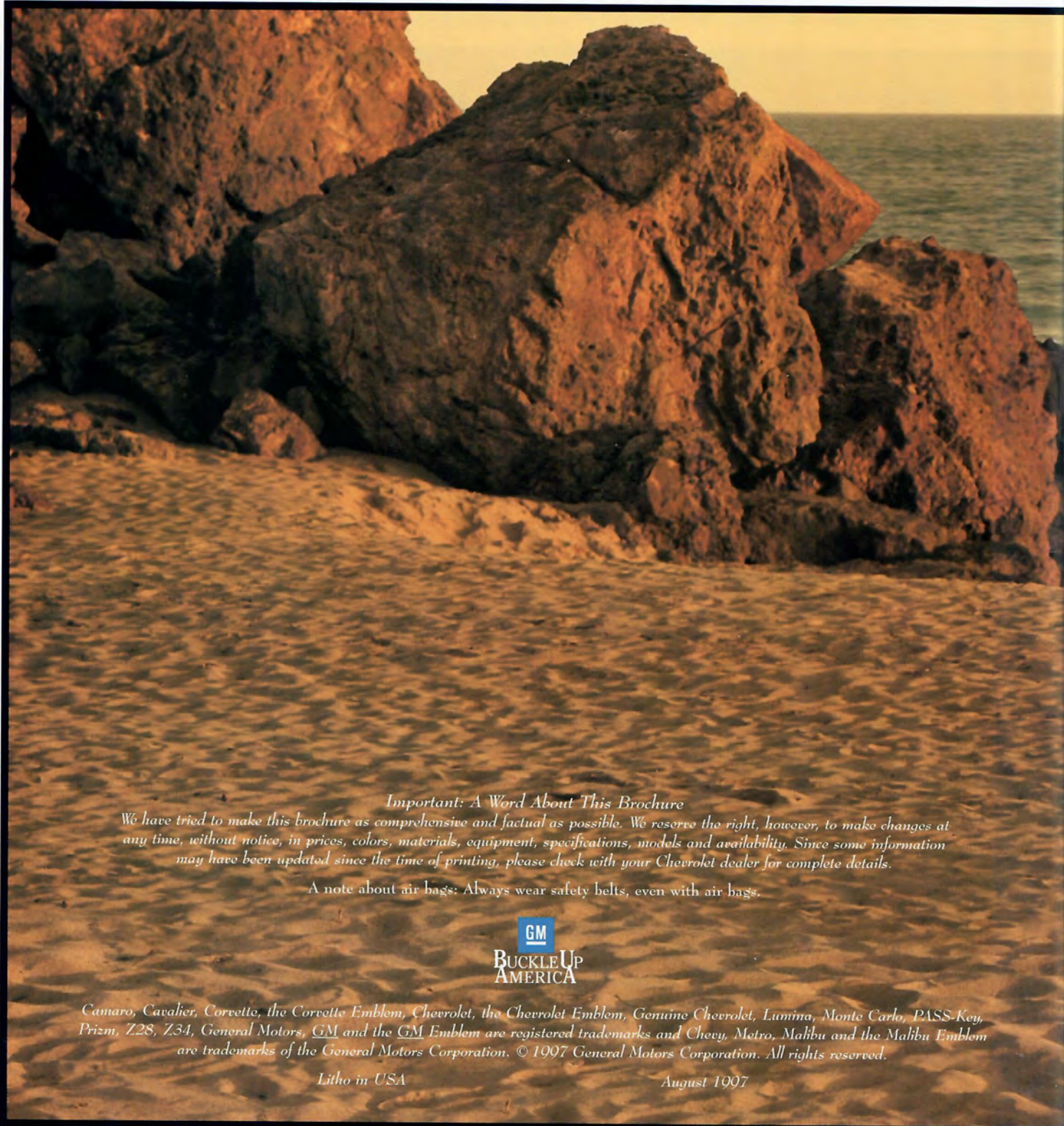
So, take your pick. Coupe or Sedan. Either way, you're getting an affordable, high-mileage new car chock full of big ideas.

*Projected EPA estimated MPG city 44/hwy. 49 for Metro Coupe with 5-speed manual transmission and 1.0 Liter engine.
†Maintenance needs vary with different uses and driving conditions.
See owner's manual for more information.



Metro LSi Sedan in Scuba Blue Metallic.





Important: A Word About This Brochure

We have tried to make this brochure as comprehensive and factual as possible. We reserve the right, however, to make changes at any time, without notice, in prices, colors, materials, equipment, specifications, models and availability. Since some information may have been updated since the time of printing, please check with your Chevrolet dealer for complete details.

A note about air bags: Always wear safety belts, even with air bags.



Camaro, Cavalier, Corvette, the Corvette Emblem, Chevrolet, the Chevrolet Emblem, Genuine Chevrolet, Lumina, Monte Carlo, PASS-Key, Prizm, Z28, Z34, General Motors, GM and the GM Emblem are registered trademarks and Chevy, Metro, Malibu and the Malibu Emblem are trademarks of the General Motors Corporation. © 1997 General Motors Corporation. All rights reserved.

Litho in USA

August 1997

Genuine Chevrolet®
The Cars More Americans Trust.

