

1998 Chevrolet Malibu



Malibu. The Car You Knew



Americans have a thing for excellence.

Our national obsession is not only to be the best, **but** to build the best. Which brings us to Malibu. **This** new-generation Chevrolet is making a big impression on people who know cars.

"A Best Buy," said one consumer magazine.

"Best-In-Class" said another. "Car of the Year" declared an enthusiast publication. More than one publication noted the large price advantage over Camry and Accord.*

We invite you to compare Malibu with any other midsize car. You'll find quality you can depend on from a name you can trust — Genuine Chevrolet. Welcome to Malibu. It's the car you knew America could build.

America Could Build.



Malibu Sedan in Sandrift Metallic.

Chevrolet's Malibu establishes a new benchmark within the domestic market based on its comfort and quietness, balanced power, attention to quality and safety, and its tremendous value.¹

— Motor Trend

"On the road, the Malibu is hard to beat. And in the showroom, its value is unparalleled."¹

— Popular Mechanics

"An instant contender in the big-number middle of the market."¹

— CAR AND DRIVER

"The Malibu name returns on a brand-new car with a comfortable ride and optional V6 engine that takes it to the top of the class."¹

— Kiplinger's Personal Finance Magazine

*Based on 1997 MSRP. 1998 prices not available at time of printing. ¹Review of 1997 model.

Beautifully Designed



Malibu is a carefully crafted balance of space, design and affordability.

The performance is smooth and very responsive, the ride is quiet, and the spaciousness for five passengers is unrivaled by Toyota Camry, Nissan Altima or Honda Accord sedans.

In a Malibu, you can travel up to 100,000 miles before the first scheduled tune-up.* You'll also enjoy the security of a totally passive theft-deterrent system and the convenience of a Battery Saver system that provides an automatic timed shutoff for interior lamps.

A four-wheel independent suspension and power rack-and-pinion steering contribute to the agile road manners, while the rigid body structure is an important reason why Malibu feels so solid, stable and well-built.

Chevy Malibu. Carefully crafted, for you.

*Maintenance needs vary with different uses and driving conditions. See your owner's manual for more information.

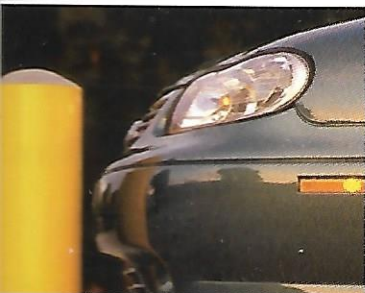
Carefully Crafted.



Malibu Sedan in Dark Cherry Metallic with optional aluminum wheels.

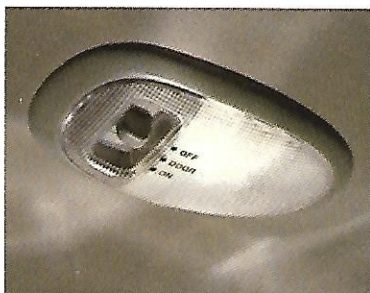
5 mph Bumpers

Energy-absorbing front and rear bumpers exceed Federal barrier test requirements and feature resilient covers to resist minor dings and dents.



Theatre Lighting

Interior courtesy lights gradually dim when doors are closed, instead of turning off abruptly.



Breakaway Outside Rearview Mirrors

These mirrors (standard on both Sedan and LS Sedan) are designed to allow realignment when bumped.



We Know How Much



Americans like to stretch out and enjoy the ride. And it's here, inside Malibu, where you'll discover the sizable difference between this Chevrolet and some other midsize sedans.

Fact is, Malibu has more room for five

passengers than any Toyota Camry, Honda Accord or Nissan Altima sedan.* More glass area, too, so everyone gets a great view.

Standard convenience features include air conditioning, electric trunk release, a center

console with storage bin and cup holder, and intermittent variable windshield wipers.

Also standard: a Delco Electronics AM/FM stereo with extended-range speakers and integral digital clock, and reclining front bucket

ou Like Your Space.



Optional Custom Cloth Interior in Medium Oak.

Seats with adjustable head restraints.
Spend some time in a Malibu. It's the midsize
car that was designed around your need for
space — and for comfort.

Based on 1997 models.

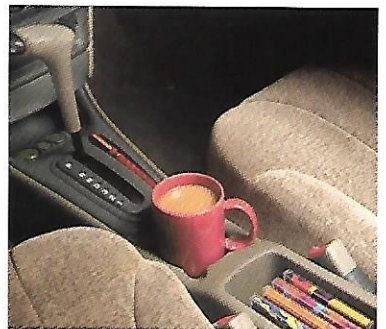
Scotchgard™ Protector

Bring on the kids, dogs, and ice cream. Scotchgard™ Protector on seat fabrics, door trim, floor mats and carpeting, is standard in every Malibu.



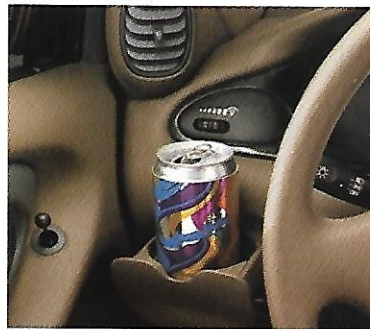
Console with Storage

The center console includes a storage bin in the center armrest, plus a CD storage area beneath the armrest (shown). The console also includes a cup holder and a coin holder. Now, that's versatility!



A Cup Holder For "Lefties"

There are four cup holders in a Malibu, including one located to the left of the steering wheel that doubles as a small storage bin.



Shoulder Belt Guide Loops

Adjustable front shoulder belt guide loops offer several positions for optimum safety belt comfort. Inboard safety belt buckles are seat-mounted for easy buckling and unbuckling.



Look At Everything That

Family vacations — and daily commutes — bring out the best in Malibu. You'll love the room. And you'll appreciate the thoughtful details, including cup holders, coin bins, storage pockets, even an auxiliary outlet for cell phones or laptop computers.

In a Malibu, everything fits. Especially you.

Stretch-Out Spaciousness
In a Malibu, you'll find real comfort for five passengers. No Honda Accord or Toyota Camry sedan gives you so much total interior room. And you'll notice that the back seats are higher than the front ones, making it easier for everyone to see the road ahead.

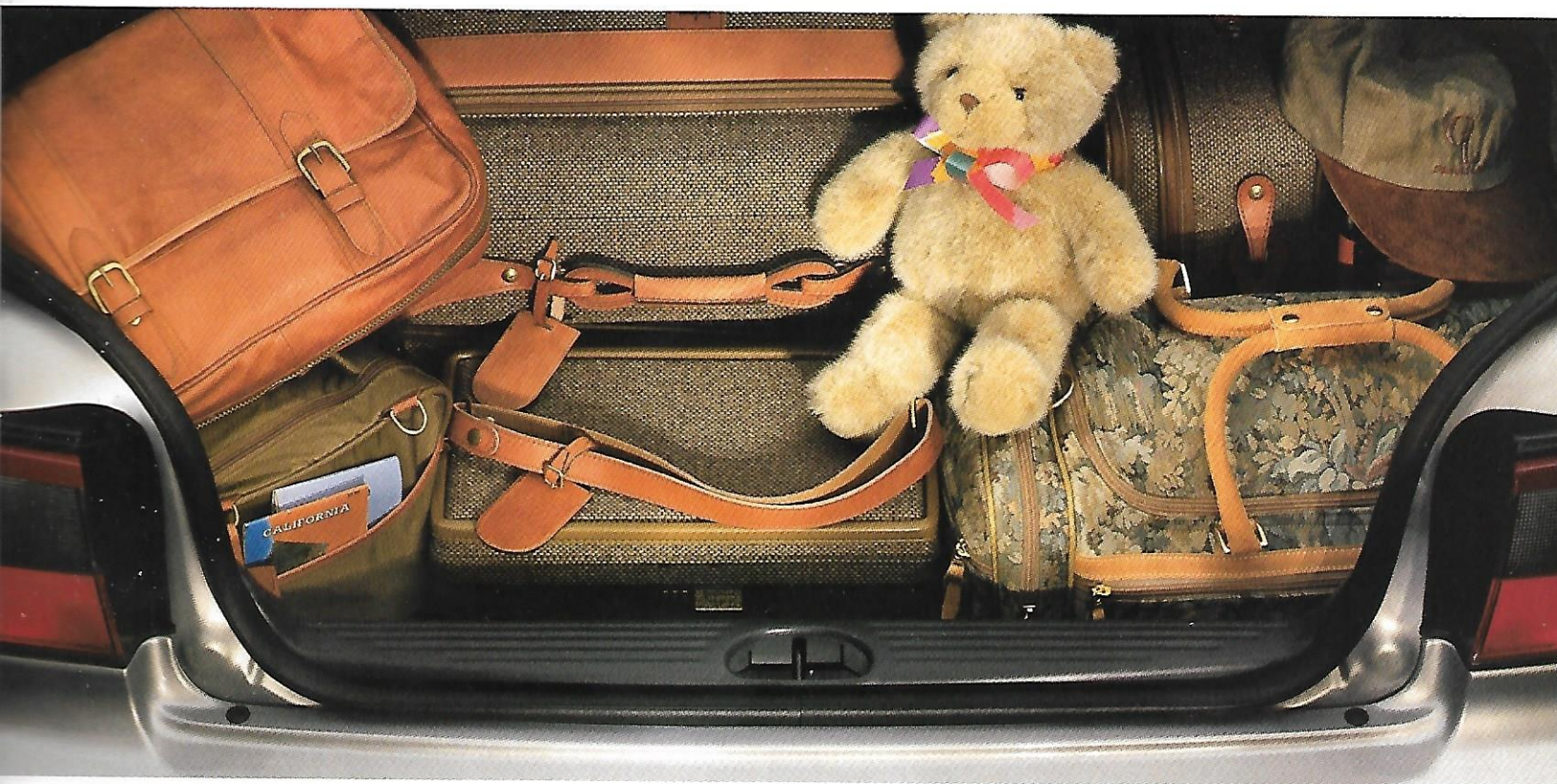


Excellence In The Details

Interior door pull handles are right where they should be and very easy to use, even with a gloved hand. It's a small detail, but one you might appreciate all winter long.



oes Into A Malibu.



More Trunk Room Than Taurus

The Malibu trunk will accommodate up to 17 cubic feet of cargo. Add to that a flat carpeted floor and bumper-level loading, and you've got the room you need. A split-folding rear seat with a trunk pass-through feature is optional on Malibu Sedan and standard on LS.



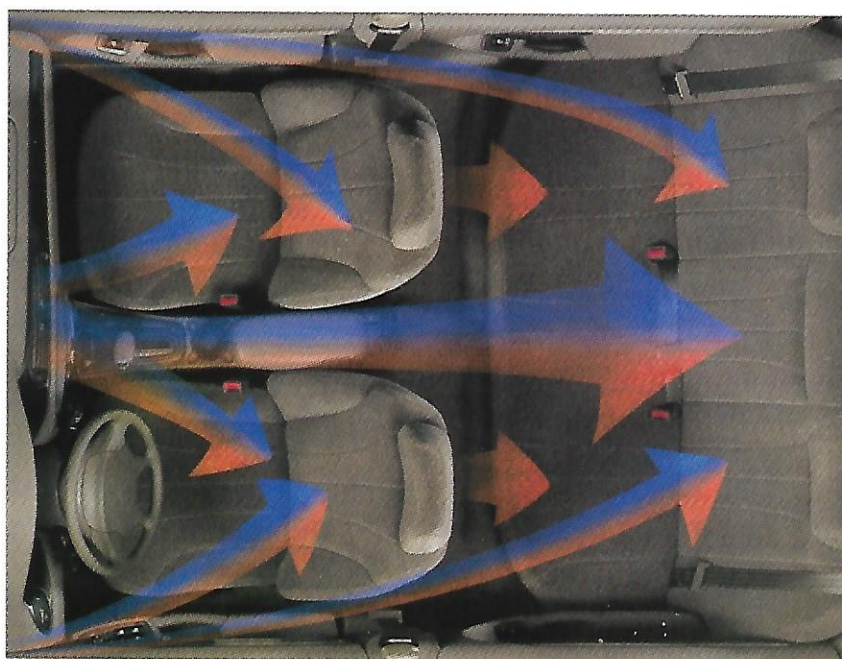
Safety Belt Comfort Guides

Standard rear-seat safety belt comfort guides make wearing shoulder belts more comfortable for older children who have outgrown child restraints. Rear outboard safety belts are designed to accommodate child seats without the use of add-on hardware or clips. See owner's manual for more information.



Rear-Seat Cup Holders

In a Malibu, rear-seat passengers enjoy the convenience of cup holders, too. These pull-out cup holders, located in the rear of the console, can hold two cups or juice boxes.



A Breath Of Fresh Air

The powerful air conditioning, heater and defroster are designed to keep you comfortable, no matter what the weather's like outside. Air vents are strategically placed to circulate air

quickly and quietly throughout the passenger area. Ducts also route air under front seats, for better distribution.

Logical. Precise. Complete



Everything about Malibu quietly confirms your first impression. This is a thoughtfully designed, precision-built automobile. And the best part? You'll feel right at home the moment you get behind the steering wheel.

There are small conveniences (including an ignition switch that is located in an easy-to-reach position on the instrument panel). Controls are all placed for easy reach and softly lit for easy nighttime visibility.

Something else you'll like is a low hoodline for a great view of the road. Instrumentation includes a tachometer and trip odometer. Also standard: a tilting steering wheel. Small things? Perhaps. But, they add up to big quality.

What's Chevy Malibu.



Malibu LS interior in Medium Neutral. Some optional equipment shown.

Malibu. The Essence Of

The carefully crafted Malibu — with its attention to safety features, quality and roominess, plus its tremendous value — is the very definition of excellence in a midsize car.

Every Malibu comes with standard air conditioning, a four-wheel anti-lock brake system (ABS), a sophisticated Passlock® theft-deterrent system, battery-rundown protection, and Daytime Running Lamps with Automatic Exterior Lamp Control.

Malibu also features body panels made of two-side galvanized steel, long-life engine coolant and transmission fluid, and an engine management system that totally eliminates the need for periodic timing adjustments.

So, you ask, "Just what is the price for greatness?" Less than you'd expect. That's what makes Malibu a Genuine Chevrolet.



4-Speed Automatic Transmission

An electronically controlled 4-speed automatic transmission is standard. A second-gear start capability is useful for low-traction surfaces, such as ice, snow or mud.



You'll Be Cool In A Malibu

Air conditioning (with CFC-free refrigerant) is standard. Front pillar-mounted auxiliary A/C outlets help circulate air quickly and quietly throughout the passenger compartment. Side-window defoggers are standard.



enuine Chevrolet.



Malibu Sedan in Dark Carmine Red Metallic with optional aluminum wheels.

Standard Security System

Passlock®, a passive theft-deterrent system, is standard. If an attempt is made to start your car without the proper key, the ignition system is disabled. Also standard: a laser-etched VIN plate and marked body parts.

AM/FM Stereo

The standard Delco Electronics AM/FM stereo features seek-scan, digital clock and extended-range rear speakers.



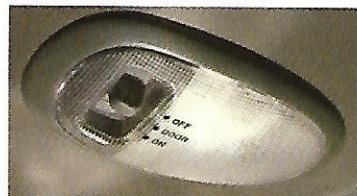
Rear-Seat Heat Ducts

Rear-seat passengers keep their toes warm on the chilly days and cool on the hot days. Ducts route air under front seats, so everyone's comfortable.



Battery-Rundown Protection

This system automatically shuts off interior lights (should you forget to do so) after the car has been sitting with the ignition off for 20 minutes.



American Excellence

American ingenuity. It put a man on the moon. It built the skyscraper, the Hula Hoop and the double-decker hamburger.

So, it's not surprising that when we roll up our sleeves and put our minds to it, we can come up with a truly remarkable midsize sedan. Chevy Malibu is one terrific car, with designed-in quality, good old common sense and American excellence, in every detail.



Five-Step Paint Process

The foundation for this quality finish is two-side galvanized-steel body panels that actually heal themselves when scratched. Then, it's into the paint booth for phosphate coatings and a rust-fighting primer, topped by a glass-smooth primer surfacer. Finally, the basecoat goes on, followed by a clearcoat, for a durable shine.

"Recessed-Park" Windshield Wipers

Windshield wipers are positioned well below the air stream to reduce wind noise caused by air turbulence at highway speeds.

Frame-Under-Glass Door Design

This design detail improves aerodynamics and contributes to a reduction in wind noise at highway speeds. Other noise-reducing details include a specially designed radio antenna and sculpted mirrors.

Innovative "Rain Gutter"

An integral "roof ditch molding" is designed to help keep you dry when getting in or out of your Malibu on rainy days.

Galvanized-Steel Body

The Malibu body panels are made of two-side galvanized steel, for unsurpassed protection against corrosion. The zinc coating actually helps prevent surface rust on the outside due to minor chips or scratches, and helps prevent holes, which could start from the inside.

through And Through.

Choice Of Two Engines

Malibu is powered by a 2.4 Liter, Twin Cam engine with Sequential Fuel Injection, dual overhead camshafts and four valves per cylinder. Horsepower is 150 at 5600 rpm. A 3100 V6 engine with Sequential Fuel Injection is standard on Malibu LS and optional on Malibu.

Liquid-Filled Engine Mounts

The Malibu engine floats on hydraulic mounts. This system actually tunes certain engine noises to levels inaudible to the human ear.

4-Speed Automatic Transmission

An electronically controlled 4-speed automatic transmission is standard. This sophisticated transmission contributes to responsive performance with computerized shift control for precise, virtually seamless shifting.

Reinforced Body Sides

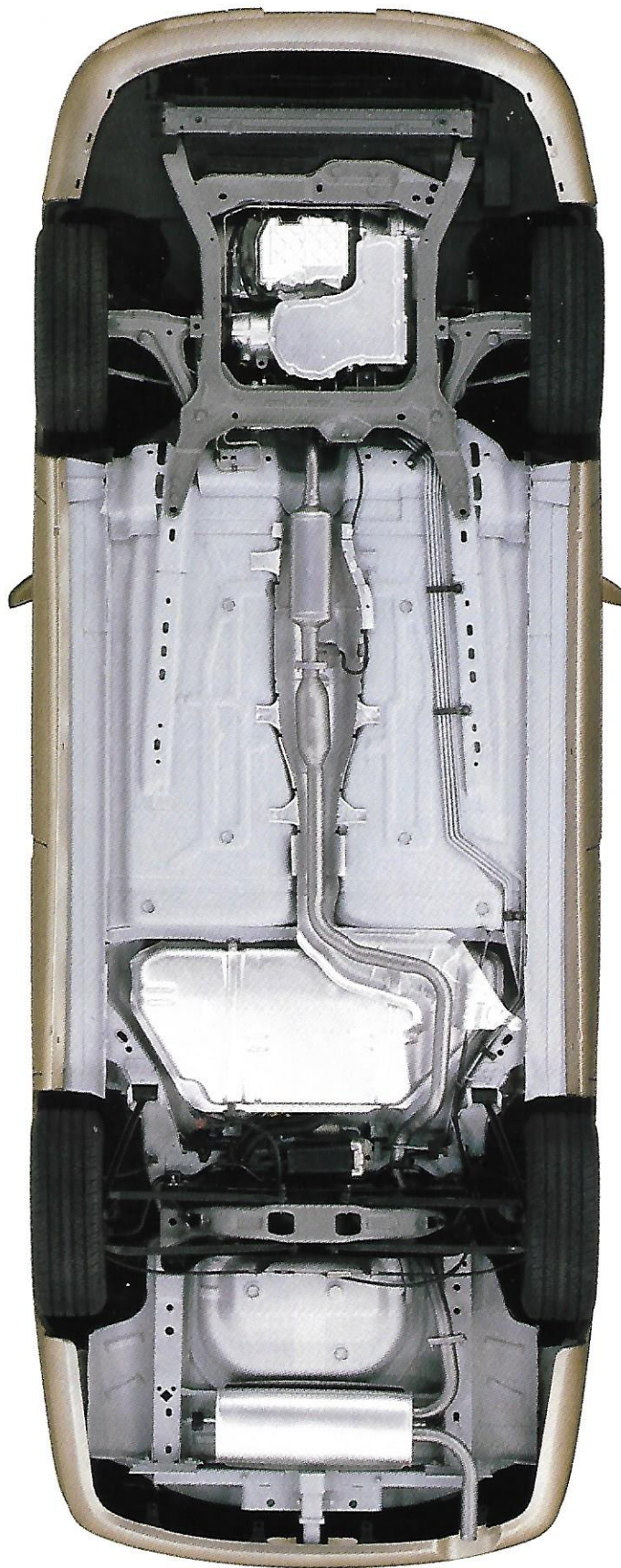
A high-strength steel safety cage helps protect you whenever you ride in a Chevy Malibu. This safety cage includes reinforced body sides and doors with integral steel side beams.

Rigid Structure

The Malibu body structure benefits from the latest GM research in vehicle design. The impressively stiff structure contributes to a smooth ride, and minimizes squeaks and rattles.

4-Wheel Independent Suspension

A sophisticated independent rear suspension helps to reduce noise, vibration and harshness. By utilizing all-aluminum suspension knuckles, significant weight savings were also achieved.



Full-Frame Front Chassis

The full-frame front chassis design delivers a very pleasing and responsive driving experience while contributing to occupant safety. It is a robust, structurally rigid design.

Aluminum Brake Calipers

All-aluminum front brake calipers with aluminum pistons reduce weight by 20 percent, when compared with conventional systems. Standard: audible wear sensors for the front disc brake pads. A special note: non-asbestos materials are used for both the front pads and rear shoes.

Foam Baffles In Floor, Rockers, Body And Pillars

The extensive and innovative use of advanced acoustic materials is designed to make Malibu a quiet car.

Stainless-Steel Exhaust System

The muffler and tailpipe are made of aluminized stainless steel for excellent protection against corrosion. In addition, the take-down pipe, extension pipe and the catalytic converter shell are made of stainless steel, providing protection for the entire exhaust system.

5-mph Bumpers

Rugged 5-mph front and rear bumpers exceed Federal barrier test requirements. Body-color fascias are designed to bounce back to their original shape after minor impacts.

In A Malibu, Safety Is



Daytime Running Lamps (DRL)

Reduced-intensity headlamps come on automatically to help other drivers notice your oncoming vehicle during daylight hours. At night, headlamps adjust to regular intensity and other exterior lamps come on automatically.

Safety-Cage Construction

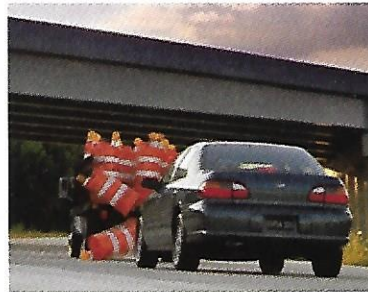
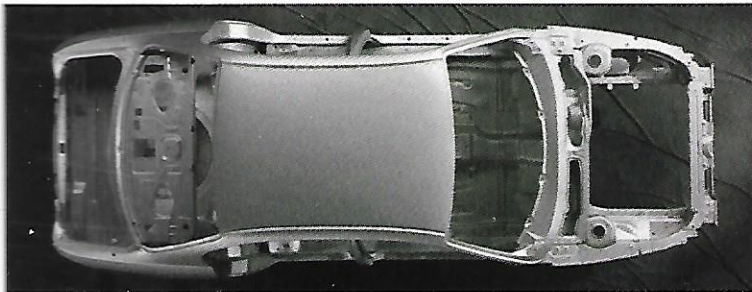
A high-strength steel safety cage (with reinforced floor and body sills, roof construction and pillars, and steel side door beams) surrounds the entire Malibu passenger compartment.

Anti-Lock Brakes

The GM-developed ABS VI (four-wheel anti-lock brake system) is standard on all Malibu models. You'll pay hundreds of dollars more for the ABS option in some midsize cars.

Safety Seat Compatibility

Rear outboard safety belts — with a cinch capability — are designed to accommodate child seats without the use of any add-on hardware or clips.



Standard Equipment.



Malibu Sedan in Medium Malachite Metallic with optional aluminum wheels.

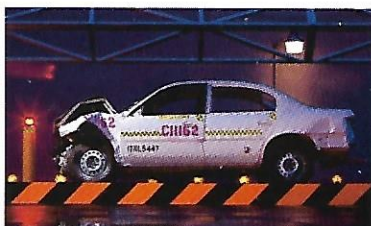
Child-Security Rear-Door Locks

The Malibu safety package includes child security rear-door locks that, when engaged, prevent the rear doors from being opened from the inside.



Energy-Absorbing Crush Zones

In collisions, the front and rear structures are designed to help absorb energy in a controlled manner, so the integrity of the passenger compartment can be maintained.



Next Generation Driver and Front-Passenger Air Bag

Standard on all models. These air bags have been engineered to provide you with enhanced protection when used in conjunction with safety belts. Remember to always wear safety belts, even with air bags.



Every new Malibu comes with a standard safety package that includes Next Generation driver and front passenger air bags,* a steel safety cage surrounding the entire passenger compartment and energy-absorbing front and rear crush zones.

And, the standard crash avoidance package — including four-wheel ABS and Daytime Running Lamps — is unmatched by many cars costing thousands of dollars more.

*A Special Note To Parents

Children are generally safer if they ride in a rear seat using the appropriate child safety seats and restraints, which is why General Motors recommends that child safety seats be properly secured in a vehicle's rear seat. See your owner's manual and child safety seat's instructions for more information.

100,000 Miles Before



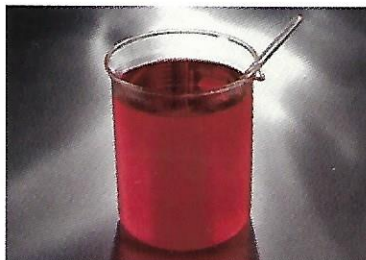
The 100,000-Mile Tune-Up

The engine in a Malibu is so advanced that you can travel coast to coast up to 35 times before the first scheduled tune-up*



Extended-Life Engine Coolant

Another reason Malibu is so easy to take care of: extended-life engine coolant with a scheduled replacement interval of up to five years or 150,000 miles* (whichever comes first).



Long-Life Transmission Fluid

The automatic transmission sets a high standard for convenience with advanced Dexron III fluid that doesn't need to be changed for up to 100,000 miles under normal driving conditions.*



No Timing Adjustments, Ever

A direct ignition system eliminates the need for periodic engine timing adjustments.



The First Tune-Up.



Malibu Sedan in Sandrift Metallic.

Two-Side Galvanized Steel

You asked for a car that will stay new looking for a long time. That's why Malibu uses two-side galvanized steel for all body panels (including the roof) for protection against corrosion that is unsurpassed.



The Tuned Tire

All-season Touring tires (P215/60R-15) are specifically designed for and tuned to Chevy Malibu. These steel-belted radials — with tread-wear indicators — deliver a remarkable blend of ride, tread life and excellent wet-weather traction.



America is a big country, and Chevy Malibu is designed to go the distance.

The engine in a Malibu has platinum-tip spark plugs. This is one reason there are no scheduled tune-ups for up to 100,000 miles.* Extended-life engine coolant doesn't need to be changed for up to five years or 150,000 miles, whichever comes first.* Transmission fluid won't need to be changed for up to 100,000 miles, under normal driving conditions.* There are no engine timing adjustments. The chassis is lubed for life and the body sheet metal has a limited warranty against rust-through for six years or 100,000 miles, whichever comes first.† A maintenance-free battery is also standard.

At Chevrolet, we believe you shouldn't have to buy an expensive car to get the advanced technology you need.

*Maintenance needs vary with different uses and driving conditions. See owner's manual for more information.

† See your Chevrolet dealer for terms of this limited warranty.

The LS Sedan. A



LS is the Malibu that's "loaded" to the max. It's got all the good stuff you'll find in the standard Malibu, and lots more.

Exterior style features that give Malibu LS its own look include styled aluminum wheels and integral foglamps. The sleek shape promises performance, and LS delivers big time, thanks to

a standard 3100 V6 engine with Sequential Fuel Injection. For your convenience, LS includes power outside mirrors, a luggage-area cargo net and a split-folding rear seat with a trunk pass-through feature.

For a look inside this very special Malibu, just turn the page.

ery Special Malibu.



Malibu LS Sedan in Black.

Remote Keyless Entry

Remote Keyless Entry (standard in Malibu LS) lets you lock or unlock doors or open the trunk from up to 30 feet away. Rolling codes help prevent a potential thief from monitoring the signal from the transmitter and replaying it to gain access to the vehicle.

Optional Electric Sunroof

Ask anyone who's ever owned a car with a sunroof — it adds another dimension to the motoring experience. This factory-installed, electric power sliding sunroof includes a deep-tinted glass panel with a pop-up feature.

Halogen Foglamps

Standard halogen foglamps enhance your view of the road in foggy conditions and help make your vehicle more visible to other drivers.

Proud sponsor
of US Soccer



The Luxury Of Leather



As nice as Malibu LS is outside, it's the interior that really sets this car apart. And, for 1998, leather seating surfaces are available.

The leather option (which includes a leather-wrapped steering wheel and shifter handle) is offered in Light Gray or Light Neutral. Standard LS interior trim is Custom Cloth, in Light Gray, Medium Gray, Medium Neutral or new Medium Oak.

Standard in every LS: a power driver's seat, power windows with a driver's Express-Down feature, power door locks and an AM/FM stereo with cassette player. A zoned rear-window defogger clears the most crucial area first (the center of the rear window). Also standard: dual mirror-mounted reading lamps.

Malibu LS interior in Medium Neutral. Some optional equipment shown.



Now Available In Malibu LS.



Malibu LS interior with optional leather seating surfaces in Light Neutral. Some optional equipment shown.

Stereo With CD Player

You can choose from two optional stereos (one with CD player, and one with both CD and cassette players). These optional stereos include speed-compensated volume and automatic tone control (which tailors equalization to the type of music being heard) and extended-range rear speakers.



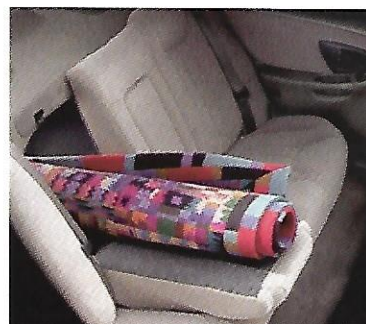
Standard Power Windows

Power windows with driver's Express-Down and rear-window lockout features are standard on Malibu LS. Backlit front power window and power door-lock switches add to nighttime convenience.



Split-Folding Rear Seat

A split-folding rear seat with a trunk pass-through feature is standard on Malibu LS. This flexible design adds to Malibu's already impressive cargo-carrying capability.



Electronic Speed Control/ Tilt Steering Wheel

It's easy to get comfortable in a Malibu LS, with a standard six-position tilt steering wheel. The electronic speed control includes Resume Speed and Accelerate/Coast controls on the steering wheel.



Malibu. A Quality



Smooth. Balanced. Responsive. That's the way Malibu feels, thanks to a four-wheel independent suspension that's tuned to take advantage of the solid body structure.

A sophisticated "tri-link" rear suspension helps reduce noise, vibration and harshness. This flexible design also helps keep the rear tires in maximum contact with the road surface.

Driving Experience.



Malibu LS in Silvermist Metallic.

The power rack-and-pinion steering provides precise response, and a level of confidence you'll appreciate. A steering rack that's directly mounted to the front suspension —

without rubber bushings — results in the solid "on-center" feel, which in turn makes Malibu such a pleasing car to drive.

Malibu's quality ride. It's all in the details.

Power. Another Reason



Who offers a standard engine with 150 horsepower? Not Camry. Not Accord.* They make do with less. But you don't have to.

Chevy Malibu has a 150-horse Twin Cam engine that gives you wonderfully responsive performance in city traffic and in freeway merging situations.

For even smoother passing and merging power, a 3100 V6 engine is standard in Malibu LS and optional in Malibu Sedan.

Technology contributing to Malibu's athletic attitude includes tuned Touring tires, a fully independent suspension and high-strength aluminum components that reduce weight.

2.4 Liter, Twin Cam Engine

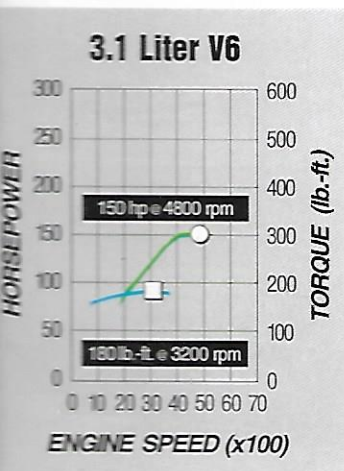
The 16-valve, dual overhead cam engine has more power than you'll find in a standard Camry or Accord. Sequential Fuel Injection and dual balance shafts add to the smooth, quiet performance. Horsepower is 150 at 5600 rpm.*



Malibu Is Your Best Buy.



Malibu LS Sedan in Black.



You'll Love the Response

Torque (and lots of it) is what makes the optional 3100 V6 such a responsive performer. A torque rating of 180 lb.-ft. at 3200 rpm means you have effortless power for passing, merging and accelerating into traffic.

3100 V6 with Sequential Fuel Injection

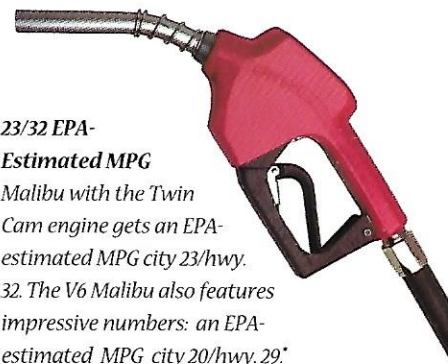
The 3100 V6 provides exceptional high rpm power for quick response at highway speeds and strong low rpm torque for outstanding acceleration. This 150-hp V6 is standard in Malibu LS Sedan and optional in Malibu Sedan.



23/32 EPA- Estimated MPG

Malibu with the Twin Cam engine gets an EPA-estimated MPG city 23/hwy. 32. The V6 Malibu also features impressive numbers: an EPA-estimated MPG city 20/hwy. 29.*

*1997 numbers. 1998 numbers not available at time of printing



Genuine Customer Care

New Vehicle Limited Warranty

This warranty is for GM vehicles registered in the United States. Please see your Chevrolet dealer for complete terms and conditions of this New Vehicle Limited Warranty.

What Is Covered For 3 Years/36,000 Miles:^{*}



The complete vehicle



Sheet metal coverage:
• Corrosion coverage
• Rust-through coverage[†]



Tires



Repairs made to correct any vehicle defect



Towing to your nearest Chevrolet dealership



No charge for warranty repairs.

^{*}Whichever comes first. [†]6 years or 100,000 miles, whichever comes first.

Courtesy Transportation

Customers who purchase or lease a 1998 Chevrolet Malibu are eligible for Courtesy Transportation (at no charge) when their vehicles are left at a participating dealership for repairs covered

under the 3-year/36,000-mile New Vehicle Limited Warranty. Courtesy Transportation, at participating dealers only, may include shuttle service, expense reimbursement or, if the

repair requires the vehicle to stay at the dealership overnight, vehicle rental. Actual services may vary at the election of the participating dealer. See your dealer for details.

Roadside Assistance^{*}

Roadside Assistance service is provided through a toll-free 800 number, 24 hours a day, 365 days a year. Roadside Assistance advisors can assist with minor mechanical problems over the phone or coordinate a variety of services through Chevrolet dealers' preferred service providers.

Basic Care Provides:



Toll-free access 1-800-CHEV-USA



Basic over-the-phone technical advice



Free towing to nearest dealer for warranty repairs



Dealer services at reasonable cost (i.e., wrecker services, locksmith/key service, glass repair, etc.).

^{*}Roadside Assistance membership is free. Some services may incur costs. Courtesy Care is available to retail, retail lease and corporate lease customers operating 1994 and newer Chevrolet vehicles for a period of 3 years/36,000 miles, whichever comes first. All Courtesy Care services and associated costs must be prearranged by Chevrolet Roadside Assistance or Dealer Service Management and must be Driver initiated. Basic Care and Courtesy Care are not part of or included in the coverage provided by the New Vehicle Limited Warranty. Chevrolet reserves the right to modify or discontinue Basic Care and Courtesy Care at any time. See dealer for complete details of the Chevrolet Roadside Assistance Program.

Courtesy Care, Which Applies For 3 Years/36,000 Miles, Provides:



Basic Care services



Free fuel delivery



Free locksmith/key service (when keys are lost on the road or locked inside)



Free non-warranty towing

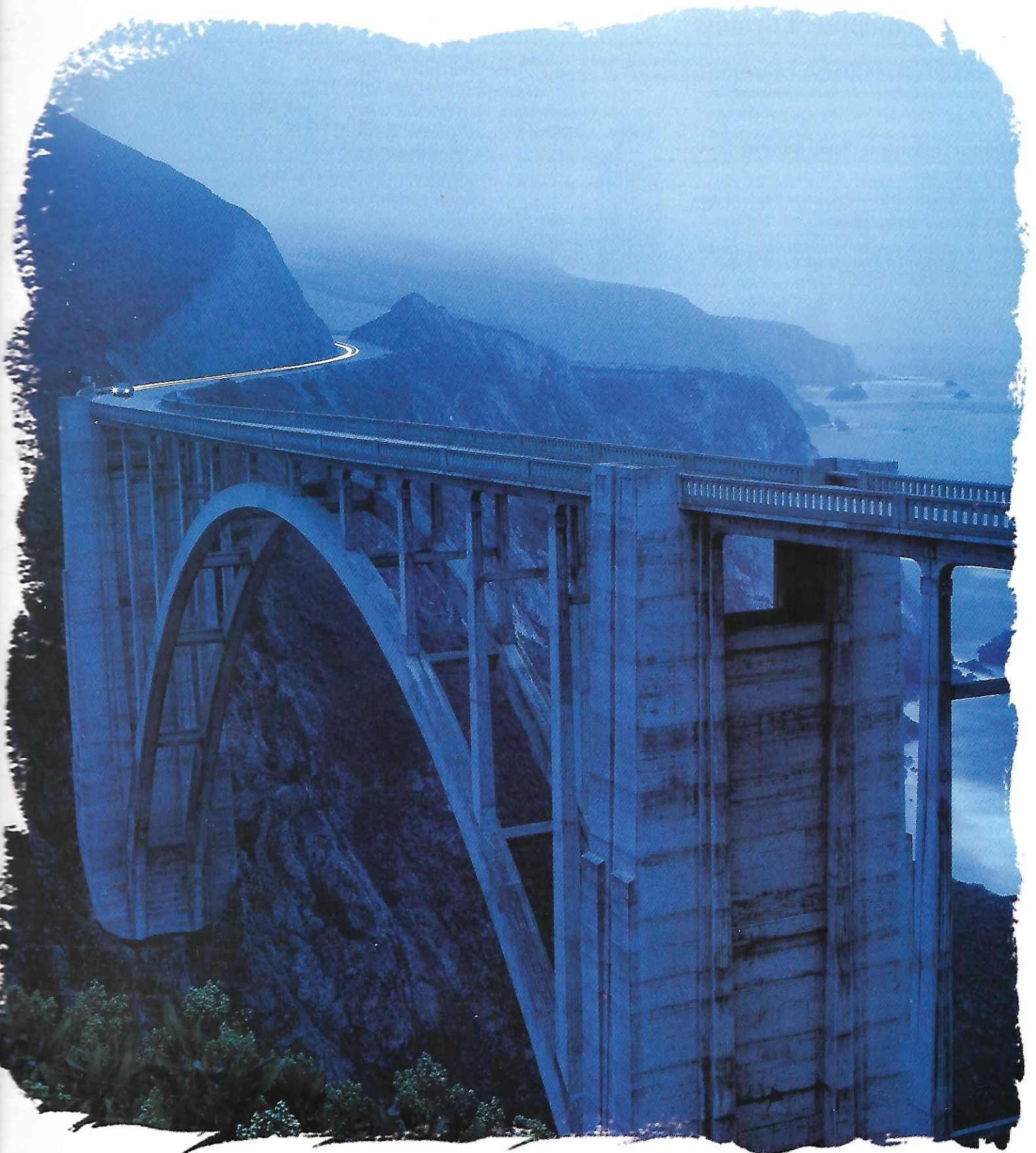


Free flat tire change service



Free jump start.

You Never Travel Alone.



The Malibu Buyer's Guide.

Preferred Equipment Groups

NOTE: These optional Preferred Equipment Groups (PEGs) are designed to help simplify the buying process. You may also add selected individual options (see Standards & Options chart for availability). Some restrictions apply. Please see your salesperson for details.

Preferred Equipment Group Number	Malibu		Malibu LS
	1	2	1
Power Door Locks	■ ■		S
Power Windows with Driver's Express-Down Feature	■ ■		S
Power Outside Rearview Mirrors	■ ■		S
Mirrors, Inside Rearview with Dual Reading Lamps	■		S
Remote Keyless Entry System	■		S
Electronic Speed Control with Resume Speed	■		S

■ — Available S — Standard.

Standards & Options

NOTE: Some individually available options listed below are included in the Preferred Equipment Group. Some restrictions may apply. Please see your salesperson for details.

	Malibu	Malibu LS
Exterior		
Body side moldings	S	S
Daytime Running Lamps with Automatic Exterior Lamp Control	S	S
Fog lamps	—	S
Halogen headlamps with flash-to-pass feature	S	S
Intermittent wiper system	S	S
Mirrors, dual, body-color; driver remote, passenger manual	S	—
Mirrors, dual, body color; electric remote	O*	S
Mud guards, front and rear	O*	O
Two-side galvanized steel (all body panels, including roof)	S	S
Interior		
Air conditioning (with CFC-free refrigerant)	S	S
Auxiliary lighting (dome, glove box and trunk)	S	S
Center console with covered storage compartment	S	S
Child security rear-door locks	S	S
Delayed entry/exit lighting with theatre dimming	S	S
Electric remote trunk release	S	S
Electronic speed control with Resume Speed	O*	S
Floor mats, front and rear	O	S
Gauge package with tachometer and trip odometer	S	S
Luggage area convenience net	O†	S
Passlock® theft-deterrent system	S	S
Power windows with driver's Express-Down feature	O*	S
Rear window defogger	O	S

Interior (continued)

	Malibu	Malibu LS
Remote Keyless Entry system	O*	S
Scotchgard™ Protector on cloth seats, door trim, floor carpeting and floor mats	S	S
Seats: Cloth reclining bucket	S	—
Seats: Custom Cloth reclining bucket	O*	—
Seats: LS Custom Cloth bucket	—	S
Seats: LS Leather seating surfaces	—	O
Seats: Driver, 6-way power	O*	S
Seats: Split-folding rear seat	O†	S
Sunroof: Electric	O*	O
Tilt-Wheel™ Adjustable Steering Column	S	S
Tinted glass — all windows	S	S

*Requires optional Preferred Equipment Group.
†Included only with optional Custom Cloth seats.

Delco Electronics Sound Systems

NOTE: Sound systems include an Electronically Tuned Receiver (ETR) with AM/FM stereo, seek and scan, dual front coaxial and extended-range rear speakers, and digital clock.

	Malibu	Malibu LS
Stereo: AM/FM	S	—
Stereo: AM/FM with cassette player, automatic tone control, TheftLock security feature and speed-compensated volume	O	S
Stereo: AM/FM with compact disc player (replaces cassette); automatic tone control, TheftLock security feature and speed-compensated volume	O	O
Stereo: AM/FM with compact disc player, remote cassette player, automatic tone control, TheftLock security feature and speed-compensated volume	O	O

Power Teams/Chassis

	Malibu	Malibu LS
Engine: 2.4 Liter Twin Cam with Sequential Fuel Injection	S	—
Engine: 3100 V6 Sequential Fuel Injection	O	S
Transmission: 4-speed electronic automatic with overdrive and second gear-start capability	S	S
Brakes: 4-wheel anti-lock system (ABS)	S	S
Brakes: Power front disc/rear drum	S	S
Power rack-and-pinion steering	S	S
Stainless-steel exhaust system	S	S
Suspension: 4-wheel independent	S	S

Wheels/Tires

	Malibu	Malibu LS
Wheels: 15" with bolt-on full wheel covers	S	—
Wheels: 15" aluminum	O*	S
Tires: P215/60R-15 blackwall Touring	S	S

S — Standard. O — Optional. *Requires optional Preferred Equipment Group.

Colors and Trim

Malibu offers you beautiful color and trim choices that reflect your desire for contemporary style and quiet elegance.

There are nine exterior colors to choose from. All are lustrous basecoat/clearcoat, for a durable, long-lasting shine.

You can select from three distinct cloth interiors (standard Malibu, optional Malibu Custom Cloth, and Malibu LS Custom Cloth), or optional leather seating surfaces in the LS.

Wheel Choices



15" bolt-on wheel cover. Standard on Malibu Sedan.



15" aluminum wheel. Standard on LS and optional on Malibu Sedan.

Cloth Trim

Light Gray

Medium Gray

Medium Neutral

Medium Oak



Exterior Colors



Dark Jade Green Metallic

Available interiors: Light Gray, Medium Gray, Medium Neutral, Medium Oak



Dark Cherry Metallic

Available interiors: Light Gray, Medium Gray, Medium Neutral, Medium Oak



Dark Carmine Red Metallic.

Available interiors: Light Gray, Medium Gray, Medium Neutral, Medium Oak

Optional Custom Cloth Trim

Light Gray

Medium Gray

Medium Neutral



Sandrift Metallic

Available interiors: Light Gray, Medium Gray, Medium Neutral, Medium Oak



Medium Malachite Metallic

Available interiors: Light Gray, Medium Gray, Medium Neutral, Medium Oak



Black

Available interiors: Light Gray, Medium Gray, Medium Neutral, Medium Oak



Medium Opal Blue Metallic

Available interiors: Light Gray, Medium Gray, Medium Neutral



Bright White

Available interiors: Light Gray, Medium Gray, Medium Neutral, Medium Oak



Silvermist Metallic

Available interiors: Light Gray, Medium Gray, Medium Neutral

LS Custom Cloth Trim

Medium Oak Light Gray Medium Gray Medium Neutral Medium Oak



LS Optional Leather Seating Surfaces

Light Neutral Light Gray



Data

Exterior Dimensions (in.)

Wheelbase	107.0
Length (overall)	190.4
Width (overall)	69.4
Height (overall)	56.4

Interior Dimensions (in.)

Headroom — front	39.4
Headroom — rear	37.6
Legroom — front	41.9
Legroom — rear	38.0
Shoulder room — front	55.5
Shoulder room — rear	55.3
Hip room — front	52.0
Hip room — rear	52.0

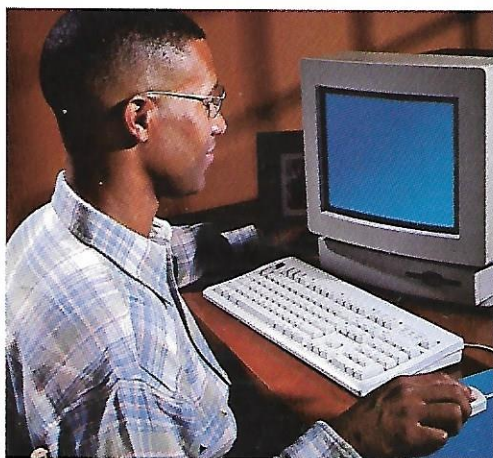
Capacities

Passenger capacity	5
Luggage capacity (cu. ft.)	17.0
Fuel tank capacity (gal.)	15.0

Trailer

Trailer classification	Light
Gross trailer weight (lbs., up to) (3100 V6 only)	1000
Maximum tongue load (lbs.)	100

NOTE: Tire chains should not be used on Malibu models equipped with P215/60R-15 tires because they could cause damage to these vehicles.



Customer Assistance

The Chevrolet Customer Assistance Center (CAC) has a special toll free number (1-800-222-1020). It puts you in contact with Chevrolet experts who can handle any product/service question or problem you may have.

A Word About ...

GM Protection Plan

The available GM Protection Plan offers service protection in addition to that provided by GM's New Vehicle Limited Warranty. Ask your dealer about it. Coverage available only in the U.S. and Canada.

Engines

Chevrolets are equipped with engines produced by different operating units of GM, its subsidiaries or suppliers to GM worldwide.

Corrosion Protection

Chevrolets are designed and built to resist corrosion. All body sheet-metal components are warranted against rust-through corrosion for 6 years or 100,000 miles, whichever comes first. Application of additional rust-inhibiting materials is not required or recommended. See your Chevrolet dealer for terms of this limited warranty.

Assembly

Chevrolets are assembled by different operating units of General Motors, its subsidiaries or suppliers to GM worldwide. Chevrolets incorporate thousands of components produced by different operating units of GM, its subsidiaries or suppliers to GM worldwide. We sometimes find it necessary to produce Chevrolets with different or differently sourced components than originally scheduled. All such components have been approved for use in Chevrolets and will provide the quality performance associated with the Chevrolet name. Since some options may be unavailable when your vehicle is assembled, we suggest that you verify that your vehicle includes the equipment you ordered or, if there are changes, that they are acceptable to you.

Updated Service Information

Chevrolet regularly sends its dealers useful service bulletins about Chevrolet products. Chevrolet monitors product performance in the field. We then prepare bulletins for servicing our products better. Now you can get these bulletins, too. Ask your dealer. To get ordering information, call toll free 1-800-551-4123.

Product Information

For additional information on 1998 Chevy car or truck products, call 1-800-950-2438 or visit us at our Web site address: <http://www.chevrolet.com>

Important: A Word About This Brochure

We have tried to make this brochure as comprehensive and factual as possible. We reserve the right, however, to make changes at any time, without notice, in prices, colors, materials, equipment, specifications, models and availability. Since some information may have been updated since the time of printing, please check with your Chevrolet dealer for complete details.

Turn Plastic Into Steel With The GM Card®

The GM MasterCard® with no annual fee (standard GM Card only) gives you an important financial advantage on your next purchase or lease of a GM vehicle. Use the GM Card® for purchases and you'll receive up to 5% of that purchase amount in GM Card Earnings. You can earn as much as \$500 per Account Year, for a maximum of \$3,500 over a period of seven years. That's over and above any other discount or incentive. To request your GM Card, call 1-800-8GM-CARD.



SMARTLEASE BY GMAC makes it easy to enjoy the performance, quality and style of a brand new Chevy

Malibu. With SMARTLEASE, qualified customers can be approved in about one hour, and you'll enjoy low SMARTLEASE monthly payments. Plus,

SMARTLEASE offers you choices at the end of your lease. You can either buy your Malibu at a price guaranteed up front, or return your vehicle with no other obligations — providing the terms of the lease have been met. For more information about SMARTLEASE, or any of the other quality GMAC financing options, see your Chevrolet dealer or call 1-800-32 SMART



A note about air bags:
Always wear safety belts,
even with air bags.

General Motors, GM, the GM Emblem, Chevrolet, the Chevrolet Emblem, FTR, Theftlock, Genuine Chevrolet, Dexron, Passlock and Solar Ray are registered trademarks and Chevy, Malibu and the Malibu Emblem are trademarks of the General Motors Corporation. 'Scotchgard' is a registered trademark of 3M. GMAC and SMARTLEASE are registered trademarks of the General Motors Acceptance Corporation. © 1997 General Motors Corporation. All rights reserved.

Litho in USA

July 1997



Genuine Chevrolet
The Cars More Americans Trust.

