

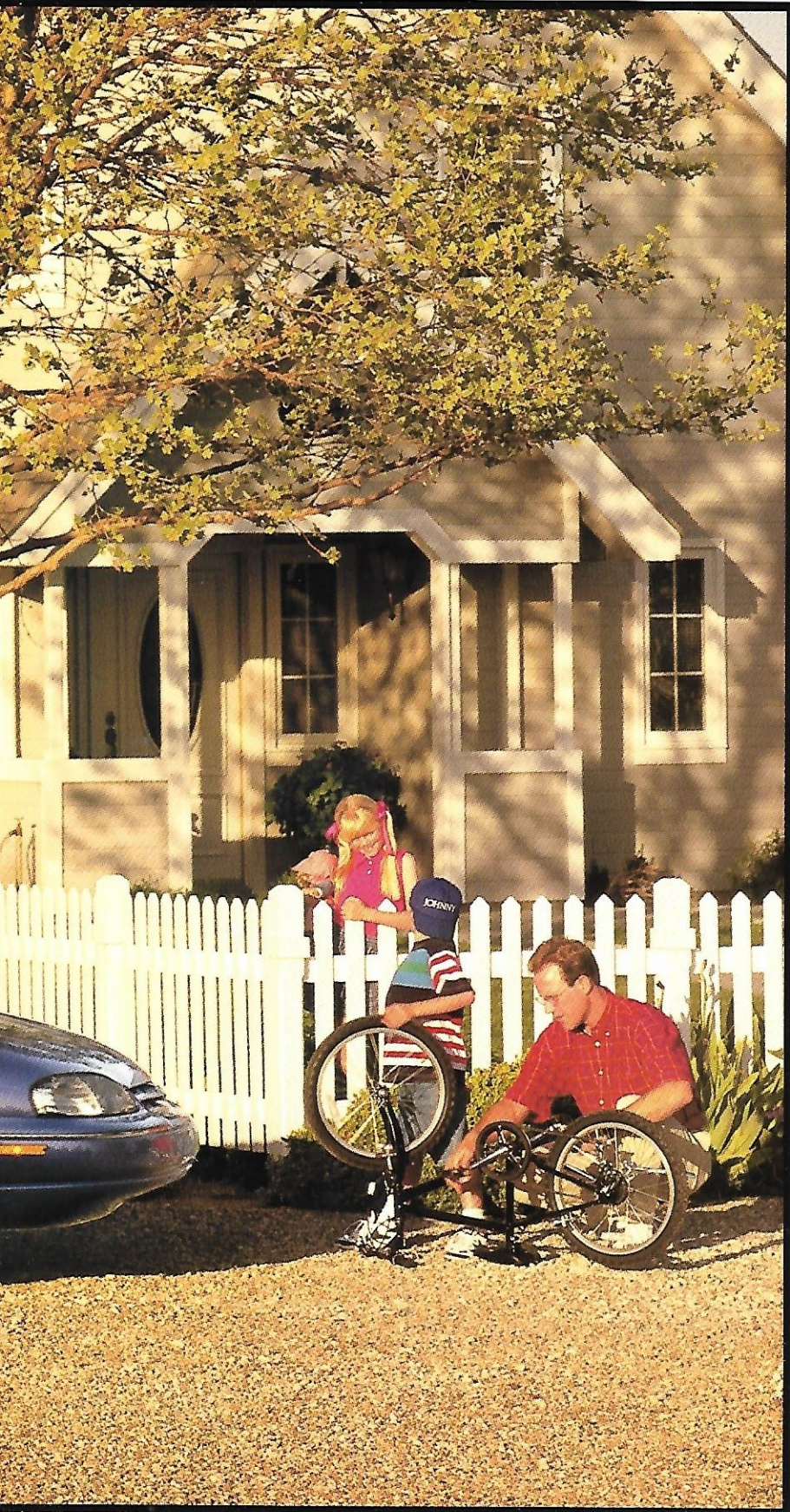
1998 Chevrolet Lumina





Exterior Sedan to Mesquite Road Blue Metallic

Lumina. Quality You Can Depend On.



Lumina Sedan is the spacious, six-passenger Chevrolet you can depend on, day after day, year after year. And, in your busy life, that's a lot less to worry about.

Award-Winning Quality

For three years in a row, Lumina has won *Consumers Digest's* "Best Buy" award.* We're also proud to say that Lumina is one of the best-selling sedans in America. Lumina means quality, and the word is getting around.

Value That's Genuine Chevrolet

Standard in every Lumina: a responsive 3100 V6 engine, air conditioning, automatic transmission, power door locks, and a theft-deterrent system. And, for ease of ownership, your new Lumina can travel up to 100,000 miles before the first scheduled tune-up.†

Safety For Your Family

For your peace of mind, Lumina features child-security rear-door locks and a lockout switch for the available power windows. There's even an integrated child safety seat option. Fact is, few cars offer as many safety and security features for the money as Chevy Lumina.

**1995, 1996 and 1997 model years.*

†Maintenance needs vary with different uses and driving conditions. See owner's manual for more information.



Lumina Sedan

The most affordable six-passenger Chevrolet, with V6 power and a great list of standard features. Some optional equipment shown.



Lumina LS Sedan

Distinctive outside — with aluminum wheels and “LS” badging — and inside, with a Custom Cloth interior.

Lumina For 1998: *Three Ways To Say "Genuine Chevrolet."*

There are three Lumina sedans to choose from for 1998; Lumina, Lumina LS and Lumina LTZ. In each one, you'll discover exacting quality, a long list of standard features — and the dependability that makes your new Lumina one less thing to worry about.

Lumina Sedan. Affordable Value.

Six-passenger spaciousness, a quiet ride and standard 3100 V6 power — all for a price that fits easily into the family budget. No wonder Lumina Sedan is such a popular midsize car.

Lumina LS Sedan. Beautifully Appointed.

When you choose LS, you get standard four-wheel anti-lock brakes (ABS), a Custom Cloth interior and 16-inch aluminum wheels.

Lumina LTZ Sedan. Sporty Performer.

The sporty side of Chevy Lumina, now available with 3800 Series II V6 power. LTZ features a performance tuned suspension and a distinctive exterior appearance.

Before you buy any car, drive a 1998 Lumina. You'll like the value you see in this Genuine Chevrolet.



Lumina LTZ Sedan

*The Lumina with sporty style and an accent on performance.
New machined-face aluminum wheels and other options shown.*



*Lumina Sedan in Dark Carmine Red Metallic.
Some optional equipment shown.*

Lumina Sedan. A Car Your Family Can Really Get Into.



In a Chevy Lumina, you get room for six and award-winning quality. To top it off, Lumina is priced thousands less than Taurus GL and has better resale value, too.*

Get The Room You Need.

Lumina gives you more people room — and more trunk room — than the most popular import sedans. Lumina has a bigger standard engine, too — a proven 3100 V6.

Get The Car You Want.

You don't buy a new car every day, so get something you really want. Lumina Sedan's tuned suspension and long wheelbase provide a great highway ride. In a Lumina, you also get air conditioning, power door locks, AM/FM stereo, even a theft-deterrent system. All standard.

You want a quality car that's right for your family. So, why settle for less when Lumina Sedan has so much?

**Based on 1997 MSRP. 1998 prices not available at time of printing. Resale value based on 1997 National Auto Research Black Book Official Used Car Market Guide Monthly prices for 1990-1996 models.*



Scotchgard™ Protector
A standard value feature that helps keep seat fabrics, door trim, floor carpeting and optional floor mats looking newer longer.



Spacious Trunk
The large 15.5 cu. ft. trunk features a carpeted load floor and bumper-level loading. A cargo-area convenience net (shown here) is optional.



Theatre Lighting
Interior courtesy lights gradually dim when doors are closed, instead of turning off abruptly. Another unexpected, thoughtful touch.



Lumina Sedan interior in Light Neutral. For your comfort, every Lumina Sedan features adjustable upper safety belt anchors for front-seat passengers.

Your Family's Comfort Zone.



Lumina Sedan has an interior that's the right size for kids, parents, and all the stuff you'll take along.

You'll Love This Backseat

Six people fit just fine, thanks to a standard 60/40 front bench seat (with a fold-down center armrest) and a wide backseat that gives everyone their own personal comfort zone.

Standard Scotchgard™ Protector

Seat fabrics are good-looking, and factory-applied Scotchgard™ Protector will help keep your Lumina's interior looking like new for years to come.

Little Things Mean A Lot

The things you want in your next new car — including power door locks, courtesy lamps, a tilt steering wheel, cup holder, and intermittent wipers — are standard in Lumina Sedan.

Room. For everybody. In a Lumina Sedan, you've got it. And that gives you a lot less to worry about.



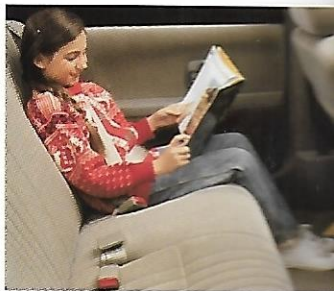
Rear-Seat Safety Belt Child Comfort Guides

Standard: rear-seat safety belt child comfort guides that make wearing safety belts more comfortable for older children who have outgrown available child restraints. See owner's manual for information.



Cup Holder Convenience

A cup holder is standard in every Lumina. Models equipped with a 60/40 split-bench front seat offer an additional pull-out cup holder in the instrument panel. Once you have a built-in cup holder, you'll wonder how you ever got along without it.



Rear-Seat Heat Ducts

Rear-seat passengers keep their toes warm on the chilly days. Ducts route air under front seats so everyone's comfortable.

It All Adds Up To A Great American Value.

100,000 Miles Before Your First Tune-Up

The engine in a Chevy Lumina — with a direct ignition system and platinum-tip spark plugs — is so advanced that you can travel up to 100,000 miles before the first scheduled tune-up. Maintenance needs vary with different uses and driving conditions. See owner's manual for more information.

3100 V6 With Sequential Fuel Injection

An exceptionally smooth 160-hp, 3100 V6 is standard in every 1998 Lumina. Sequential Fuel Injection provides impressive throttle response and an advanced ignition system delivers fast starts and is designed to eliminate the need for periodic timing adjustments.

Four-Speed Automatic Transmission

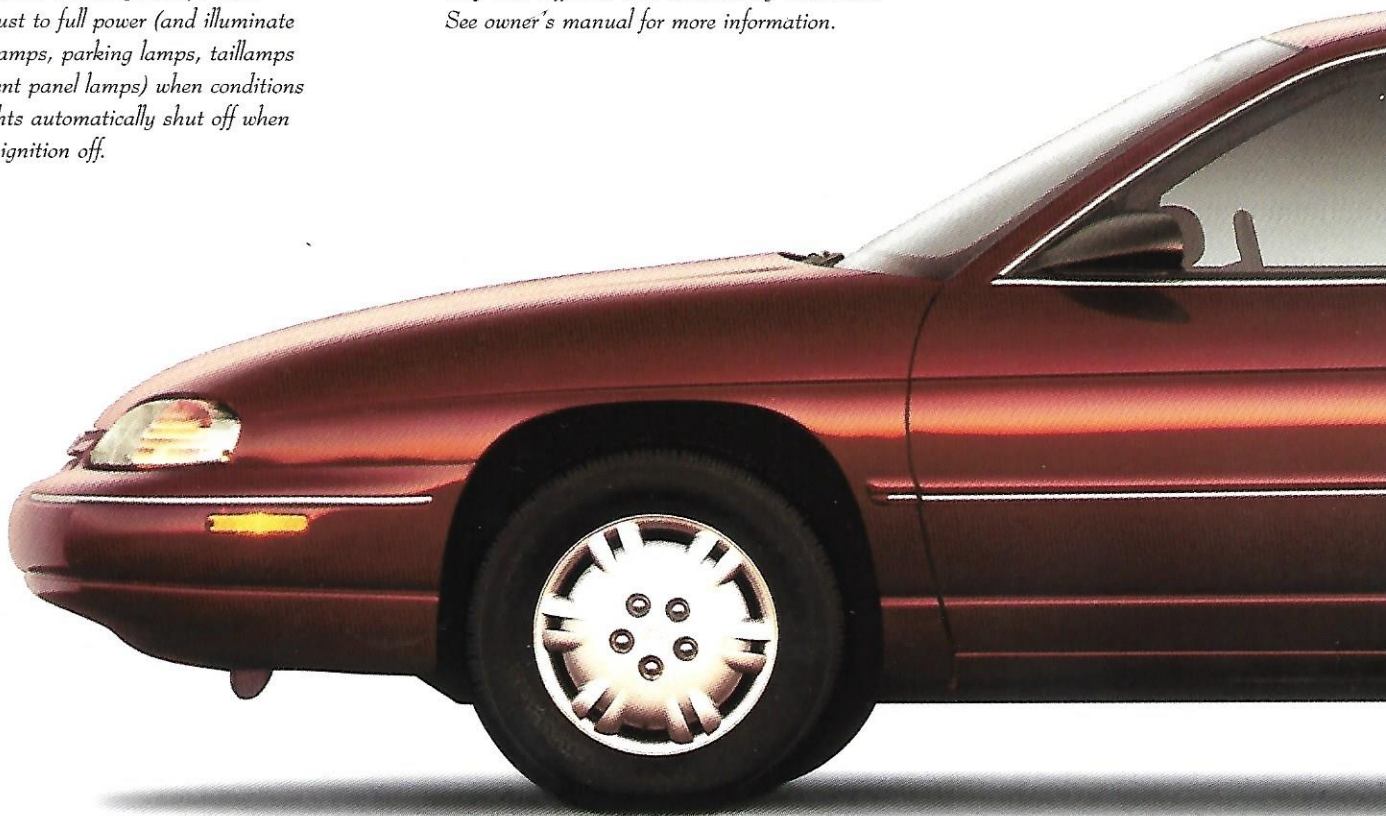
An electronically controlled 4-speed automatic transmission is standard. This sophisticated transmission provides virtually undetectable upshifts and downshifts.

Daytime Running Lamps with Automatic Exterior Lamp Control

You can virtually forget you even have a headlamps switch, because the reduced-intensity Daytime Running Lamps automatically adjust to full power (and illuminate side marker lamps, parking lamps, taillamps and instrument panel lamps) when conditions warrant. Lights automatically shut off when you turn the ignition off.

Extended-Life Engine Coolant

Extended-life engine coolant has a scheduled replacement interval of five years or 150,000 miles (whichever comes first), and that's one less thing to worry about. Maintenance needs vary with different uses and driving conditions. See owner's manual for more information.



5-MPH Bumpers

Rugged 5-mph front and rear bumpers exceed federal requirements. Body-color fascias are designed to bounce back to their original shape after minor impacts.

Front-Wheel Drive

The combination of front-wheel drive and all-season radial tires helps to provide impressive traction and driving stability in the snow.

Body-Side Moldings

Standard body-side moldings help protect your Lumina from dings and dents. Another reason you'll worry less driving a Chevy Lumina.

A Strong, Solid Foundation

Rigid, unitized body/frame construction helps make Lumina Sedan strong and quiet. This foundation is an important reason why Lumina has an exceptional ride and feels so solid and well-built.

Foam Baffles in Floor, Rockers, Body and Pillars

The extensive and innovative use of advanced acoustic materials is designed to make Lumina a quiet car.

Innovative "Rain Gutter"

An integral "roof ditch molding" is designed to keep you dry when getting in or out of your Lumina on rainy days.

Two-Side Galvanized Steel

Unsurpassed protection against corrosion is provided by the use of two-side galvanized steel for all body panels except the roof. The zinc coating actually helps prevent surface rust on the outside due to minor chips or scratches, and helps prevent holes which start from the inside.

Great Fuel Economy

Lumina Sedan with the standard 3100 V6 engine gets an EPA-estimated MPG city 20/hwy. 29. Estimates are MPG city 19/hwy. 30 for the optional 3800 Series II V6 engine. These are 1997 numbers; 1998 numbers not available at time of printing.



Reinforced Body Sides

You are protected by a steel safety cage whenever you ride in a Lumina. This safety cage includes reinforced body sides and doors with integral steel side beams.

4-Wheel Independent Suspension

A sophisticated independent rear suspension helps to reduce noise, vibration and harshness. Tires specifically tuned to the Lumina contribute to this feeling of quality.

Stainless-Steel Exhaust

The Lumina stainless-steel exhaust system is designed to resist corrosion, and that's one less thing to worry about.



Innovative Child Protection Features

Lumina offers the option of a convenient integral child safety seat (one of the few cars in its class with this choice), and standard child security rear-door locks that, when engaged, prevent the rear doors from being opened from the inside. A power window lock-out feature is standard on LS and LIZ models. Rear outboard safety belts are designed to accommodate child safety seats without the use of any add-on hardware or clips and include a safety belt cinch capability.

In A Lumina, Safety Surrounds You.

Safety. For your family. It may be the best reason to drive a Lumina.

Crash Avoidance Features

They'll see you coming in your new Lumina, thanks to standard Daytime Running Lamps. A four-wheel anti-lock brake system (ABS) is optional in Lumina Sedan and standard in LS and LTZ models. Every Lumina includes a brake/transmission shift interlock, tire-tread wear indicators and audible brake-wear indicators.

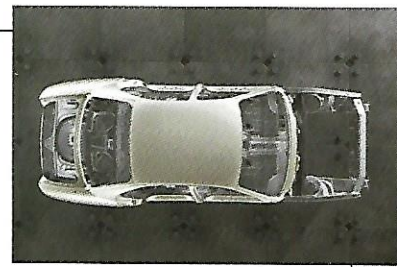
Occupant Protection Features

Standard: Next Generation driver and right front-passenger air bags,* safety-cage construction, front and rear crush zones and side door beams.

**A Special Note To Parents*

Children are generally safer if they ride in a rear seat using the appropriate child safety seats and restraints, which is why General Motors recommends that child safety seats be properly secured in a vehicle's rear seat. See your owner's manual and child safety seat's instructions for more information.

**Always wear safety belts, even with air bags.*



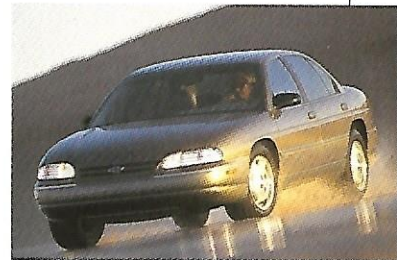
Safety-Cage Construction

A high strength steel safety cage (with reinforced floor and body sills, roof construction and pillars, and steel side door beams) surrounds the entire Lumina passenger compartment.



Anti-Lock Brakes

The GM-developed ABS VI four-wheel anti-lock brake system is standard on Lumina LS and LTZ and optional on Lumina Sedan. ABS reduces wheel lockup while braking, and is designed to help maintain steering control and help prevent skidding on most slippery surfaces.



Daytime Running Lamps With Automatic Exterior Lamp Control

During daytime driving situations, reduced-intensity low-beam headlamps come on automatically to alert other roadway users to your oncoming vehicle. Headlamps and other exterior lamps automatically adjust to regular intensity at night and in other low-light conditions.



PASS-Key II

The standard PASS-Key II theft-deterrent system means only your specially coded key starts your Lumina. This security feature is not available on any Accord or Camry. Marked body parts, a laser-etched VIN plate and a remote hood release are also standard.



*Lumina LS Sedan in Light Pewter Metallic.
Some optional equipment shown.*

Lumina LS. Luxury That's Affordable.



Lumina LS Sedan is proof that you don't have to pay a lot to get a lot.

Example: Four-wheel anti-lock brakes can be a costly option in some cars.

In the LS Sedan, ABS is standard.

LS Exterior Features

The well equipped LS also includes 16-inch Touring tires, cast-aluminum wheels, and dual electric remote outside mirrors. An electric sliding sunroof is optional.

LS Interior Features

Inside the quiet world of Lumina LS, you'll find a beautiful Custom Cloth interior with a 60/40 front seat. For an even more luxurious look, leather seating surfaces are optional. Standard in every LS: power windows with a driver's Express Down feature and a gauge package with tachometer.

Lumina LS. It's the luxury car for people with better places to spend their money than luxury cars.



Dual Climate Controls

Here's a thoughtful convenience feature. Optional dual climate controls allow driver and front passenger to vary temperatures to suit individual tastes.



Stereo With CD Player

The Lumina LS stereo features speed-compensated volume and automatic tone control, which tailors equalization to the type of music or voice being heard. An integral CD player is optional.



Remote Keyless Entry

Optional Remote Keyless Entry lets you lock or unlock doors or open the trunk from up to 30 feet away. "Rolling codes" prevent a potential thief from monitoring the signal from the transmitter and replaying it later to gain access to the vehicle.



Lumina LS instrument panel with AM/FM stereo and CD player, steering wheel-mounted radio controls, individual driver and front passenger temperature controls, and other options.

Enjoyable Driving Starts Right Here.

Driving should be enjoyable. It should not be work. That's the whole idea behind Lumina LS.

Enjoy A Quality Experience

Every control is designed to make you feel comfortable, and in command.

Gauges are bold and very easy to read.

The soft-touch steering wheel adjusts

to suit your driving style. Optional

conveniences include "duplicate"

steering wheel radio controls, dual-

zone climate control and a Remote

Keyless Entry system.

Designed Around You

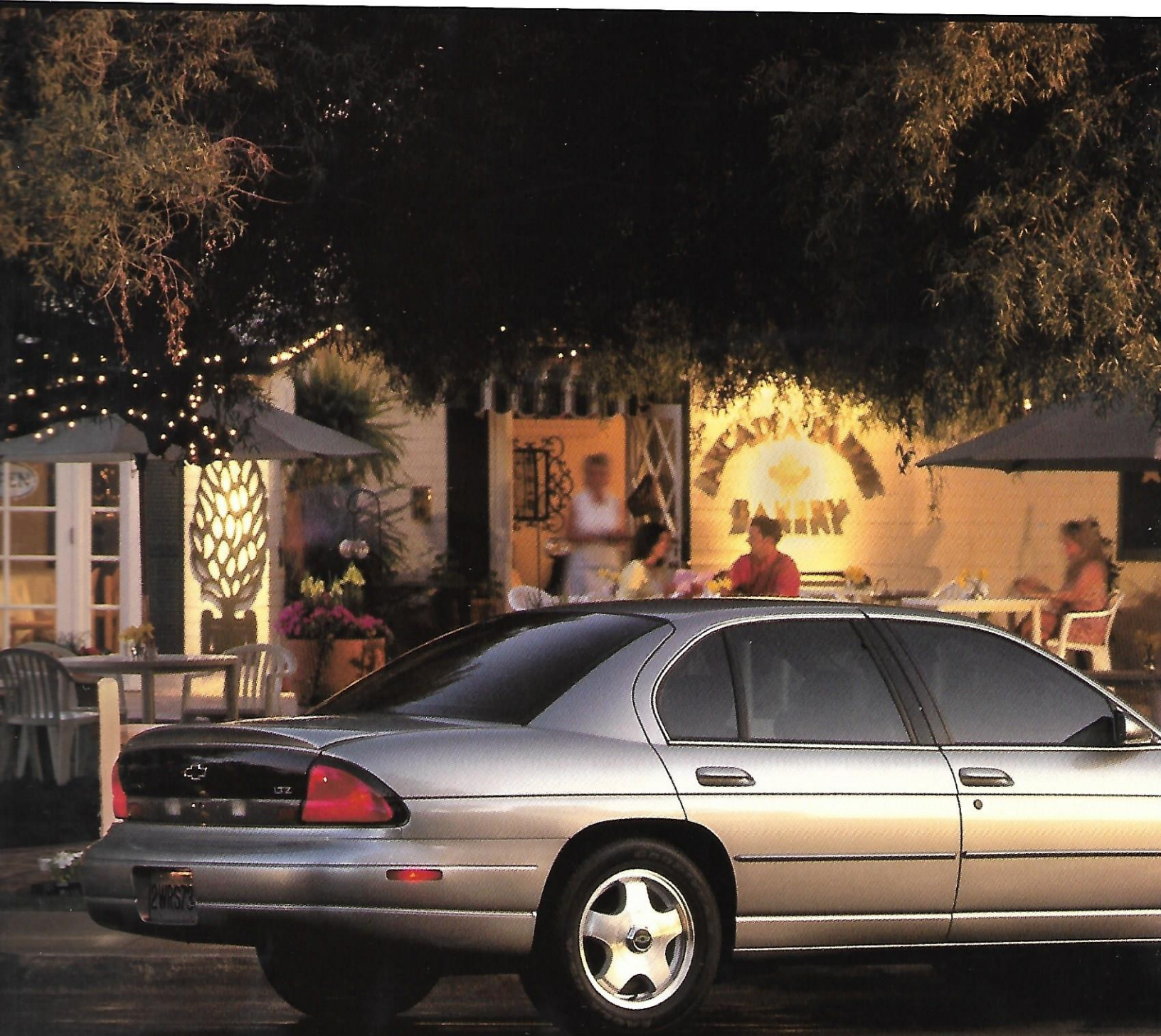
That's the real beauty of Chevy Lumina.

All the features you want are here, in

an environment that's designed around

you, the driver.





Lumina LTZ Sedan in Light Pewter Metallic with machined-face aluminum wheels and other options.

LTZ. The Sporty Side Of Lumina.



Lumina LTZ is everything you expect in a fun-to-drive sedan — except expensive.

LTZ Style

LTZ certainly looks the part, with exclusive front and rear styling, a decklid spoiler and aggressive 16-inch aluminum wheels.

LTZ Technology

The specially tuned four-wheel independent suspension delivers a remarkable blend of ride and response, while the four-wheel anti-lock brake system (ABS) adds to your confidence in any driving situation.

LTZ Performance

Standard engine in the LTZ is the proven 3100 V6. Horsepower is 160 at 5200 rpm. Newly optional for 1998: the acclaimed 3800 Series II V6. This performer delivers 200 hp at 5200 rpm. With either engine, you'll enjoy the virtually seamless shift quality of an electronically controlled 4-speed automatic transmission.

If you enjoy driving, you'll like everything about Lumina LTZ.



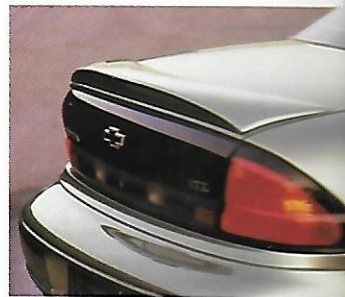
Machined-Face Aluminum Wheels

Optional 16-inch, machined-face aluminum wheels provide an especially sporty appearance.



Electric Sunroof

A power sliding sunroof is optional on both Lumina LS and Lumina LTZ. Included: a deep-tinted roof panel (with pop-up feature).



Lumina LTZ Rear Spoiler

A distinctive rear spoiler and unique rear taillamps add to the sporty appearance of Lumina LTZ.



Lumina LTZ interior in Neutral with optional front bucket seats and leather seating surfaces.

Lumina LTZ Puts More Fun In The Family Car.



Discerning drivers will appreciate the logic — and the attitude — of this very well designed interior. Instrumentation is analog. Control placement is logical. The relationship between seat, pedals and steering wheel accommodates an unusually wide range of drivers.

LTZ Interior Choices

Choose from Custom Cloth trim (standard) or the optional leather seating surfaces (shown at left). Both are available with either a 60/40 split-bench front seat or optional bucket seats with center console.

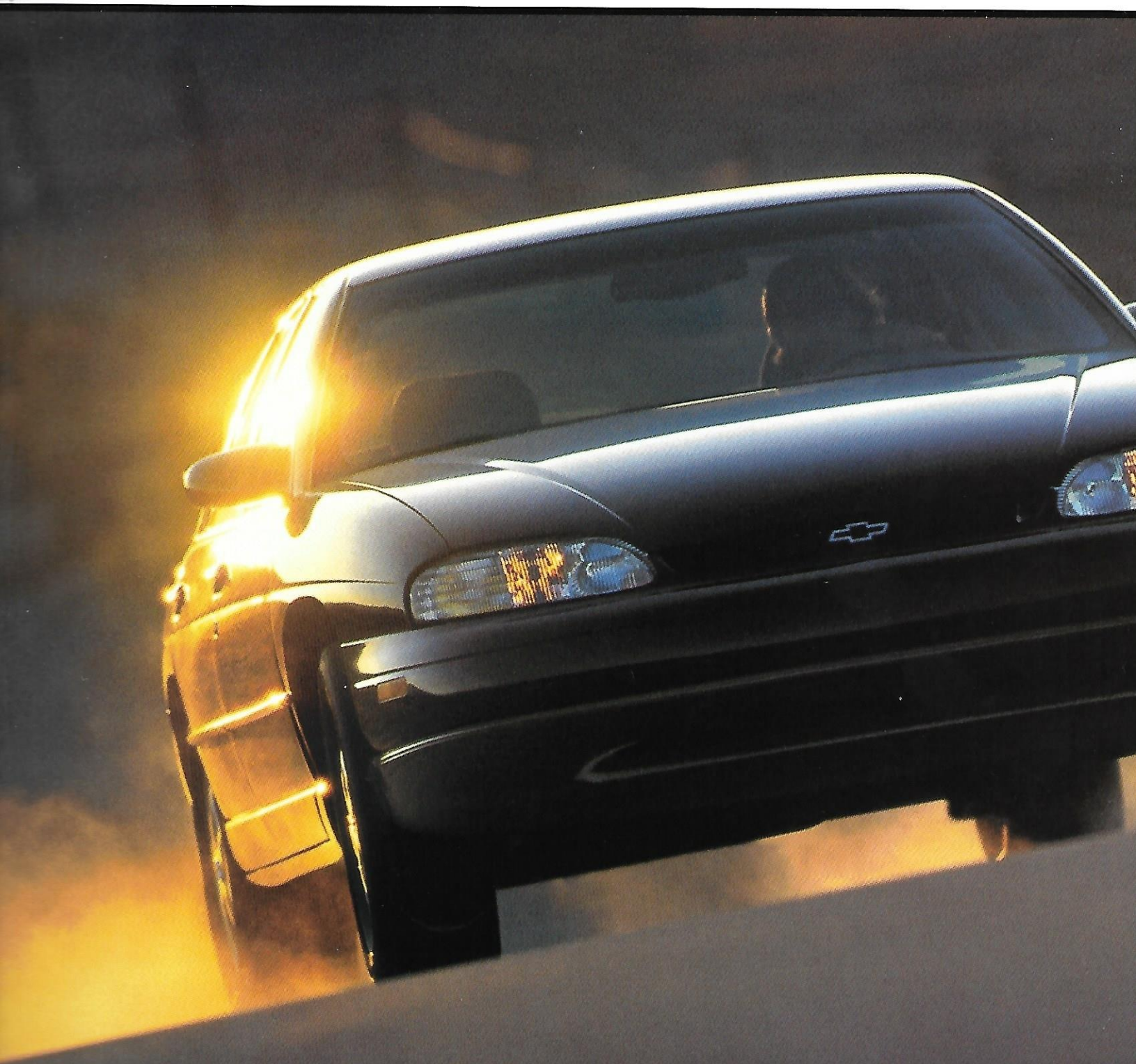
Lumina LTZ is more than a beautiful sedan. It's the family car for people who love to drive.

LTZ Custom Cloth Interior
The LTZ Custom Cloth interior is available in Medium Blue, Medium Gray, Neutral or Ruby Red, depending on exterior color selected. Included with the optional front bucket seats shown here: a center storage console with cup holder.

ONSTAR®

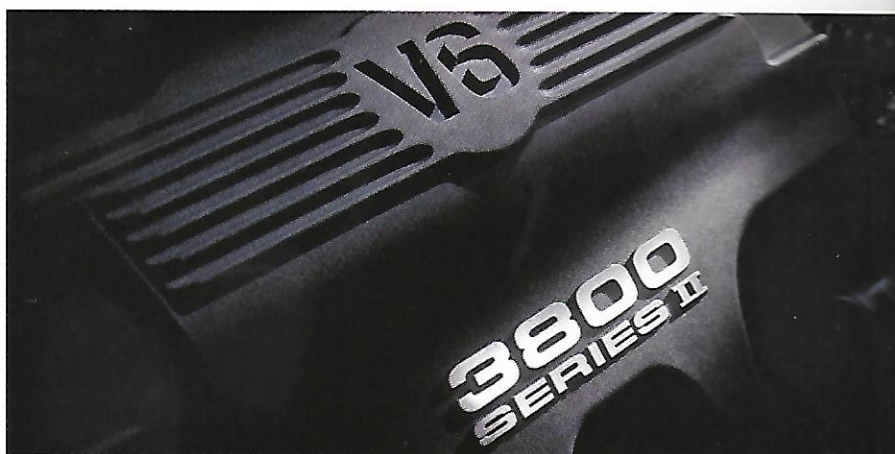
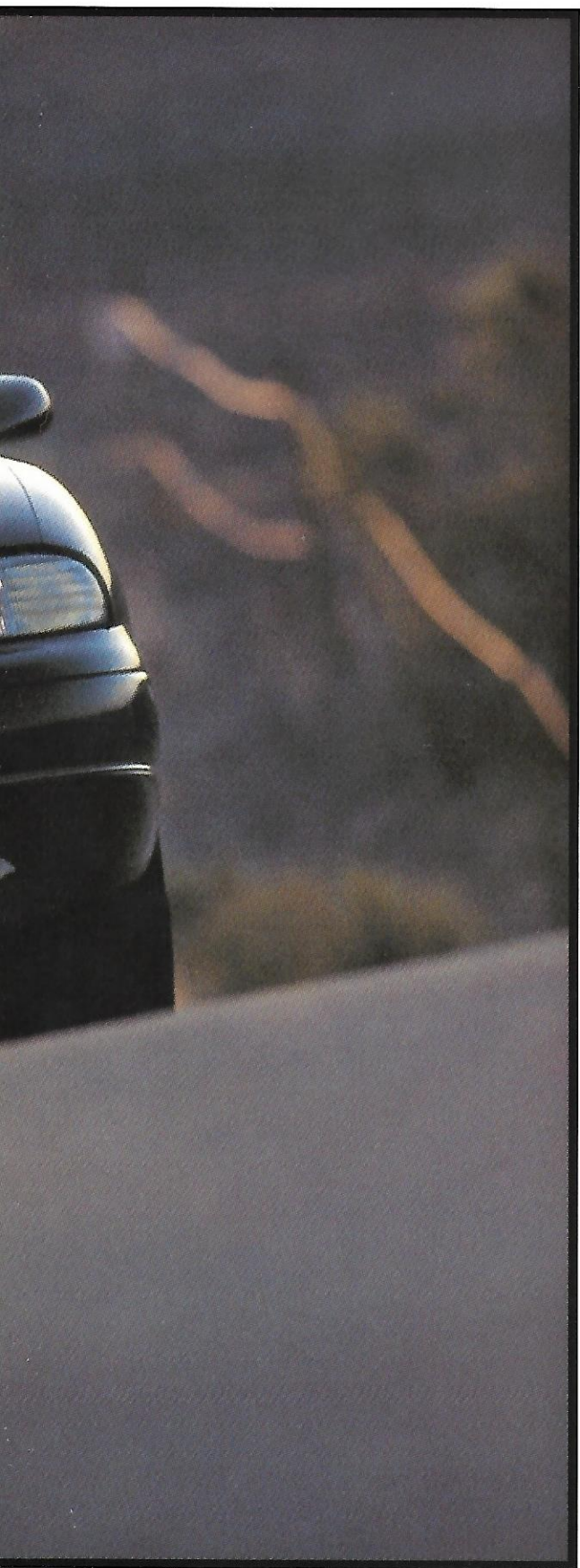
General Motors OnStar (a dealer-installed option) uses Global Positioning System satellite technology and a hands-free, voice-activated cellular phone to link you to the OnStar Center, where advisors are on call 24 hours a day, 7 days a week. General Motors OnStar System provides assistance in a variety of ways:

- Roadside Assistance for everything from a flat tire to an empty fuel tank
- Trip routing
- Remote door unlocking if you've locked your keys in your vehicle
- Automatic notification of air bag deployment
- Emergency services
- Stolen-vehicle tracking
- Convenience services to help you find everything from airlines to zoos. Call 1-888-ONSTAR-7 for more information.



Lumina LTZ Sedan in Black.

Now Available: 3800 V6 Power.



In a Lumina, you enjoy more standard power than you'd find in Taurus, Accord, or Camry. And, for 1998, Lumina takes affordable performance to an even higher level.

New: 3800 V6 Power

For the first time, the acclaimed 3800 Series II V6 with Sequential Fuel Injection is optional. Horsepower is 200 at 5200 rpm. Compared to last year's optional V6, the 3800 is lighter, delivers greater highway fuel economy, and has a wider torque curve.

"The power-hungry will revel in the big 3800 Series II V6," says *Road & Track*. Obviously, this is an option well worth considering.

Award-Winning 3800 V6
The 3800 Series II V6 engine, now optional in Lumina LTZ, has been ranked as "one of the ten best engines in the world" by Ward's Auto World Magazine.



3100 V6 Engine with Sequential Fuel Injection
A 160 hp, 3100 SFI V6 is standard in all Lumina models. An electronically controlled 4-speed automatic transmission is also standard in every Lumina.



Lumina IS Sedan in Medium Regal Blue Metallic.

Genuine Customer Care. You Never Travel Alone.

New Vehicle Limited Warranty

This warranty is for GM vehicles registered in the United States. Please see your Chevrolet dealer for complete terms and conditions of this New Vehicle Limited Warranty.

What Is Covered For 3 Years/36,000 Miles:*



The complete vehicle



Sheet metal coverage:

- Corrosion coverage
- Rust-through coverage†



Tires



Repairs made to correct any vehicle defect



Towing to your nearest Chevrolet dealership



No charge for warranty repairs.

*Whichever comes first. †6 years or 100,000 miles, whichever comes first.

Courtesy Transportation

Customers who purchase or lease a 1998 Chevrolet Lumina are eligible for Courtesy Transportation (at no charge) when their vehicles are left at a participating dealership for repairs covered

under the 3-year/36,000-mile New Vehicle Limited Warranty. Courtesy Transportation, at participating dealers only, may include shuttle service, expense reimbursement or, if the repair requires

the vehicle to stay at the dealership overnight, vehicle rental. Actual services may vary at the election of the participating dealer. See your dealer for details.

Roadside Assistance*

Roadside Assistance service is provided through a toll-free 800 number, 24 hours a day, 365 days a year. Roadside Assistance advisors can assist with minor mechanical problems over the phone or coordinate a variety of services through Chevrolet dealers' preferred service providers.

*Roadside Assistance membership is free. Some services may incur costs. Courtesy Care is available to retail, retail lease and corporate lease customers operating 1994 and newer Chevrolet vehicles for a period of 3 years/36,000 miles, whichever comes first. All Courtesy Care services associated costs must be prearranged by Chevrolet Roadside Assistance or Dealer Service Management and must be driver initiated. Basic Care and Courtesy Care are not part of or included in the coverage provided by the New Vehicle Limited Warranty. Chevrolet reserves the right to modify or discontinue Basic Care and Courtesy Care at any time. See dealer for complete details of the Chevrolet Roadside Assistance Program.

Basic Care Provides:



Toll-free access
1-800-CHEV-USA



Basic over-the-phone technical advice



Free towing to nearest dealer for warranty repairs



Dealer services at reasonable cost (i.e., wrecker services, locksmith/key service, glass repair, etc.).

Courtesy Care, Which Applies For 3 Years/36,000 Miles, Provides:



Basic Care services



Free fuel delivery



Free locksmith/key service (when keys are lost on road or locked inside)



Free non-warranty towing



Free flat tire change service



Free jump start.

Lumina Buyer's Guide

Preferred Equipment Groups

NOTE: These optional Preferred Equipment Groups (PEGs) are designed to help simplify the buying process. You may also add selected individual options (see Standards & Options chart for availability). Some restrictions apply. Please see your salesperson for details.

Preferred Equipment Groups	Lumina	LS	LITZ
Electronic Speed Control with Resume Speed	■	■	■
Luggage-Area Convenience Net	■	S	S
Power Trunk Opener	■	■	■
Power Windows with Driver's Express-Down Feature	■	S	S
Dual Electric Remote Sport Mirrors	■	S	S
Radio Controls: Steering Wheel-Mounted (includes leather-wrapped steering wheel)			■
Remote Keyless Entry System		■	■
Temperature Controls: Driver and Front-Seat Passenger		■	■
Front Floor Mats, Color-Keyed, Carpeted	■	■	■
Rear Floor Mats, Color-Keyed, Carpeted	■	■	■

■ — Included in Preferred Equipment Group. S — Standard.

Standards & Options

NOTE: Some individually available options listed below are included in Preferred Equipment Groups. Some restrictions may apply. Please see your salesperson for details.

Exterior	Lumina	LS	LITZ
Composite halogen headlamps	S	S	S
Daytime Running Lamps	S	S	S
Electric sliding sunroof	—	O	O
Spoiler, rear deck	—	—	S
Sport mirrors, dual black left-hand remote	S	—	—
Sport mirrors, dual black electric remote	O	S	—
Sport mirrors, dual body-color electric remote	—	—	S
Interior	Lumina	LS	LITZ
Air conditioning (with CFC-free refrigerant)	S	S	S
Auxiliary lighting (dome, reading, glove box, and trunk)	S	S	S
Child security rear-door locks	S	S	S
Delayed-entry/exit lighting with theatre dimming	S	S	S
Electronic speed control with Resume Speed	O	O	O
Gauge package with tachometer	—	S	S
Intermittent wiper system	S	S	S
Low oil level/wear indicator and low coolant level monitor lights	S	S	S
Luggage-area convenience net	O	S	S
Next Generation driver and right front-passenger air bags	S	S	S
OnStar Communications System (dealer installed)	O	O	O
PASS-Key II theft-deterrent system	S	S	S
Power door-lock system	S	S	S
Power driver seat (6-way)	O	O	O
Power trunk opener	O	O	O

Interior (continued)	Lumina	LS	LITZ
Power windows with driver's Express-Down feature	O	S	S
Rear-window defogger	O	O	O
Remote Keyless Entry system	O*	O	O
Scotchgard™ Protector on cloth seats, door trim, floor carpeting and floor mats	S	S	S
Seats: Cloth 60/40 split-bench front seat	S	—	—
Seats: Custom Cloth 60/40 split-bench front seat	O	S	S
Seats: Custom Cloth front bucket seats	—	—	O
Seats: Leather seating surfaces, 60/40 split-bench front seat	—	O	O
Seats: Leather seating surfaces, front bucket seats	—	—	O
Seat: Integral child safety seat	O†	O	O
Tilt-Wheel™ Adjustable Steering Column	S	S	S
Tinted glass (with Solar-Ray windshield/rear glass)	S	S	S

*Requires optional Preferred Equipment Group. †Requires Custom Cloth interior.

Delco Electronics Sound Systems

NOTE: Sound systems include an Electronically Tuned Receiver (ETR) with AM/FM stereo, extended-range speakers, 12 FM/6 AM station pre-sets and digital clock.

Stereo: AM/FM	S	—	—
Stereo: AM/FM with cassette player, automatic tone control, TheftLock security feature and speed-compensated volume	O	S	S
Stereo: AM/FM with compact disc player, automatic tone control, TheftLock security feature and speed-compensated volume	O	O	O
Radio controls: steering wheel-mounted (includes leather-wrapped steering wheel)	—	O	O

Power Teams/Chassis

V6 engine: 3100 with Sequential Fuel Injection	S	S	S
V6 engine: 3800 Series II with Sequential Fuel Injection	—	—	O
4-speed elect.-controlled automatic transmission	S	S	S
Brakes: 4-wheel anti-lock system (ABS)	O	S	S
Brakes: Power front disc/rear drum	S	S	S
Brakes: Power 4-wheel disc	—	—	O*
Power rack-and-pinion steering	S	S	S
Suspension: Ride and Handling	—	—	O*

*Included with optional 3800 Series II V6 only.

Wheels/Tires

Wheels: 15" x 6" with bolt-on wheel covers	S	—	—
Wheels: 15" x 6" with bolt-on chrome wheel covers	O	—	—
Wheels: 16" x 6.5" aluminum	O*	S	—
Wheels: 16" x 6.5" sporty aluminum	—	—	S
Wheels: 16" x 6.5" sporty aluminum (machined-face)	—	—	O†
Tires: P205/70R-15 blackwall Touring	S	—	—
Tires: P225/60R-16 blackwall Touring	O	S	S
Tires: P225/60R-16 blackwall Eagle RS-A	—	—	O†

S — Standard. O — Optional. *Requires P225/60R-16 blackwall Touring tires. †Requires optional 3800 V6.

Lumina Colors And Trim

Exterior Colors



Black

Available interiors: *Medium Gray, Neutral, Ruby Red*



Medium Regal Blue Metallic (not available on LTZ)

Available interiors: *Medium Blue, Medium Gray, Neutral*



Light Driftwood Metallic

Available interior: *Neutral*



Dark Jade Green Metallic

Available interiors: *Medium Gray, Neutral*



Deep Purple Metallic (not available on LTZ)

Available interiors: *Medium Gray, Neutral*



Dark Carmine Red Metallic

Available interiors: *Medium Gray, Neutral, Ruby Red*

Standard Cloth Trim

Custom Cloth Trim

Medium Blue

Medium Gray

Neutral

Ruby Red

Medium Blue



Wheel Choices



Navy Blue Metallic

Available interiors: Medium Blue, Medium Gray, Neutral



15" bolt-on wheel cover (Silver).
Also available in Chrome.
Standard on Lumina Sedan.



16" aluminum wheel.
Standard on LS and
optional on Lumina Sedan.



Light Pewter Metallic

Available interiors: Medium Gray, Neutral, Ruby Red



16" aluminum wheel. Standard
on Lumina LTZ. (Available in
White with Bright White exterior).



16" machined-face aluminum
wheel. Optional on Lumina LTZ
with 3800 Series II V6 engine.



Bright White

Available interiors: Medium Blue, Medium Gray, Neutral, Ruby Red



Torch Red (LTZ only)

Available interiors: Medium Gray, Neutral

LS And LTZ Optional Leather Seating Surfaces

Medium Gray

Neutral

Ruby Red

Medium Gray

Neutral



Additional Information

Data

Exterior Dimensions (in.)

Wheelbase	107.5
Length (overall)	200.9
Width (overall)	72.5
Height (overall)	55.2

Interior Dimensions (in.)

Headroom — front	38.4
Headroom — rear	37.4
Legroom — front	42.4
Legroom — rear	36.6
Hip room — front	55.4
Hip room — rear	55.3
Shoulder room — front	58.4
Shoulder room — rear	57.4

Capacities

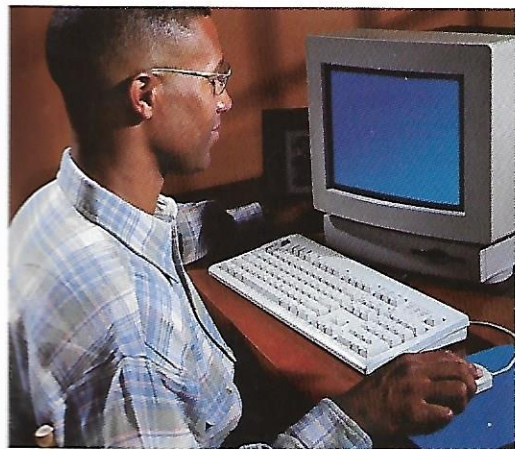
Passenger capacity	6*
Luggage capacity (cu. ft.)	15.5
Fuel tank capacity (gal.)	16.6

*5-passenger seating with bucket seats.

Trailerling

Trailer classification	Light
Gross trailer weight (lbs., up to)	1000
Maximum tongue load (lbs.)	100

NOTE: Tire chains should not be used on Lumina models equipped with P225/60R-16 tires because they could cause damage to these vehicles.



Customer Assistance

The Chevrolet Customer Assistance Center (CAC) has a special toll-free number (1-800-222-1020). It puts you in contact with Chevrolet experts who can handle any product/service question or problems you may have.

A Word About ...

GM Protection Plan

The available GM Protection Plan offers service protection in addition to that provided by GM's New Vehicle Limited Warranty. Ask your dealer about it. Coverage available only in the U.S. and Canada.

Engines

Chevrolets are equipped with engines produced by different operating units of GM, its subsidiaries or suppliers to GM worldwide.

Corrosion Protection

Chevrolets are designed and built to resist corrosion. All body sheet-metal components are warranted against rust-through corrosion for 6 years or 100,000 miles, whichever comes first. Application of additional rust-inhibiting materials is not required or recommended. See your Chevrolet dealer for terms of this limited warranty.

Assembly

Chevrolets are assembled by different operating units of General Motors, its subsidiaries or suppliers to GM worldwide. Chevrolets incorporate thousands of components produced by different operating units of GM, its subsidiaries or suppliers to GM worldwide. We sometimes find it necessary to produce Chevrolets with different or differently sourced components than originally scheduled. All such components have been approved for use in Chevrolets and will provide the quality performance associated with the Chevrolet name. Since some options may be unavailable when your vehicle is assembled, we suggest that you verify that your vehicle includes the equipment you ordered or, if there are changes, that they are acceptable to you.

Updated Service Information

Chevrolet regularly sends its dealers useful service bulletins about Chevrolet products. Chevrolet monitors product performance in the field. We then prepare bulletins for servicing our products better. Now you can get these bulletins, too. Ask your dealer. To get ordering information, call toll free 1-800-551-4123.

Product Information

For additional information on 1998 Chevy car or truck products, call 1-800-950-2438 or visit us at our Web site address: <http://www.chevrolet.com>

Important: A Word About This Brochure

We have tried to make this brochure as comprehensive and factual as possible. We reserve the right, however, to make changes at any time, without notice, in prices, colors, materials, equipment, specifications, models and availability. Since some information may have been updated since the time of printing, please check with your Chevrolet dealer for complete details.

Turn Plastic Into Steel With The GM Card®

The GM MasterCard® with no annual fee (standard GM Card only) gives you an important financial advantage on your next purchase or lease of a GM vehicle. Use the GM Card® for purchases and you'll receive up to 5% of that purchase amount in GM Card Earnings. You can earn as much as \$500 per Account Year, for a maximum of \$3,500 over a period of seven years. That's over and above any other discount or incentive. To request your GM Card, call 1-800-8GM-CARD.



SMARTLEASE BY GMAC makes it easy to enjoy the safety, style and performance of Chevy Lumina. With SMARTLEASE, qualified customers can be approved in about one hour, and you'll enjoy low SMARTLEASE monthly payments.



Plus, SMARTLEASE offers you choices at the end of your lease. You can either buy your Lumina at a price guaranteed up front, or return your vehicle with no other obligations — providing the terms of the lease have been met. For more information about SMARTLEASE or any of the other quality GMAC financing options, see your Chevrolet dealer or call 1-800-32-SMART.

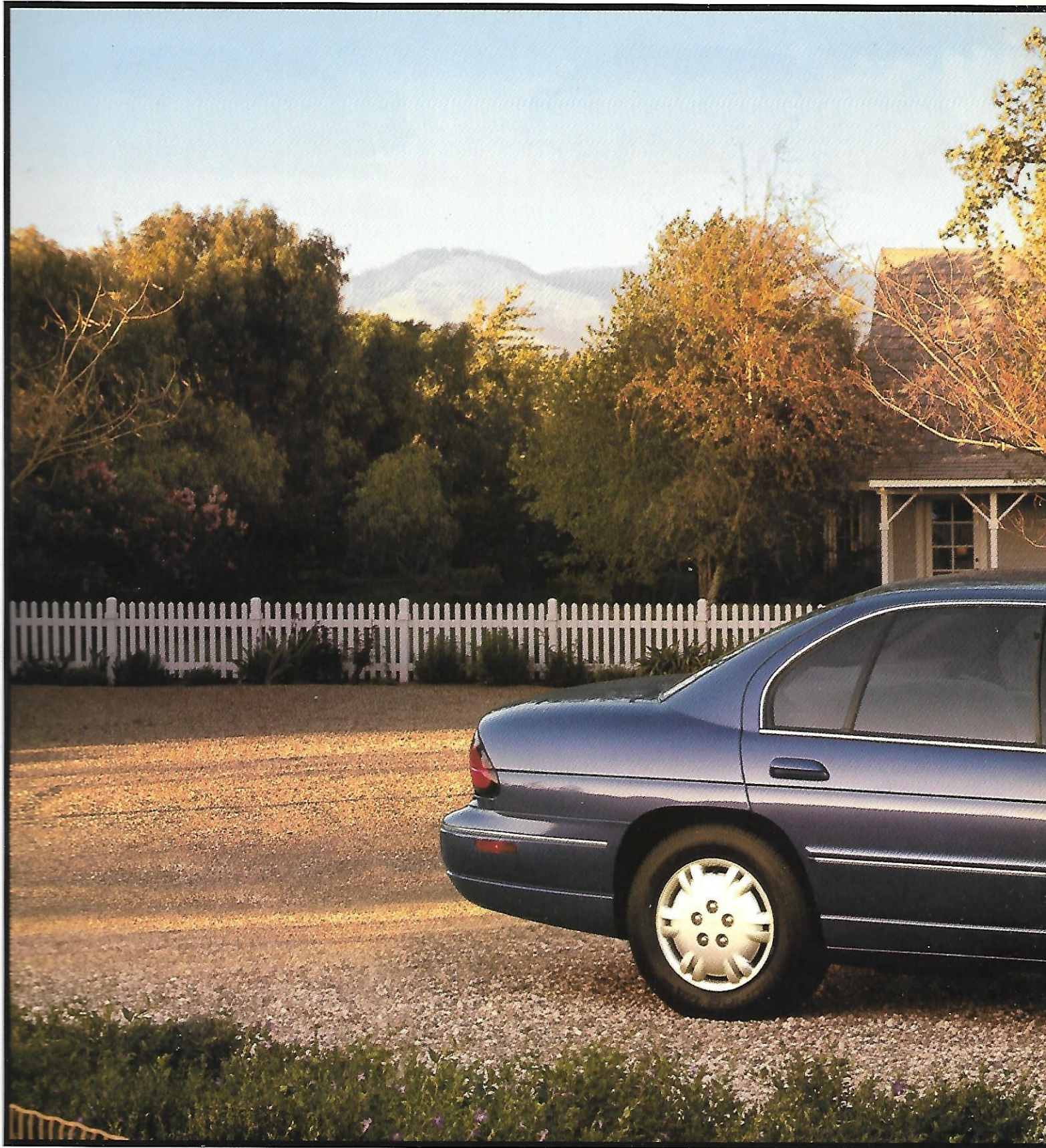


A note about air bags:
Always wear safety belts,
even with air bags.

General Motors, GM, the GM Emblem, ETR, PASS-Key, Solar-Ray, OnStar, TheftLock, Lumina, Chevrolet, the Chevrolet Emblem and Genuine Chevrolet are registered trademarks and Chevy is a trademark of the General Motors Corporation. "Scotchgard" is a registered trademark of 3M. GMAC and SMARTLEASE are registered trademarks of the General Motors Acceptance Corporation. © 1997 General Motors Corporation. All rights reserved.

Litho in USA

July 1997



Genuine Chevrolet® 
The Cars More Americans Trust.