



1999 Monte Carlo



The Side You Show the World Is Up to You.

A psychologist would have a field day analyzing the two personalities inside Chevrolet Monte Carlo. On the outside, its styling is a sophisticated indulgence in steel. A magnet for gawkers.

But on the inside, this is a driver's car, with four-wheel independent suspension, front-wheel-drive traction and a rigid body structure that delivers a solid, satisfying feel on the road.

Monte Carlo Z34 is a most remarkable blend of power and style, thanks to the exhilarating responsiveness of a 200 hp, 3100 Series II V6 and a specially tuned Ride and Handling suspension. Monte Carlo LS Coupe combines striking good looks with the confident attitude of its own 160 hp, 3100 V6 engine.

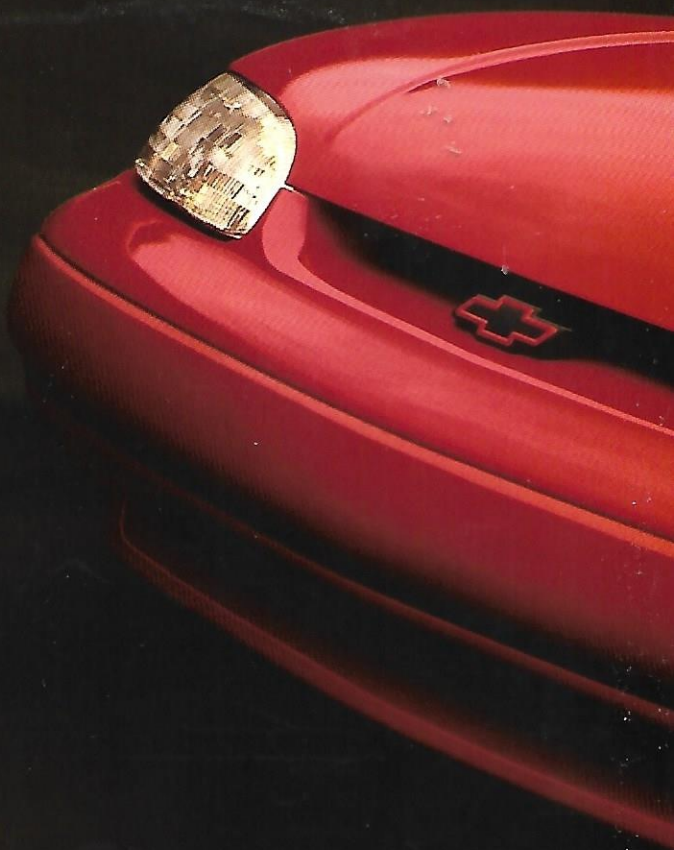
Enjoy the attention. Or, unleash the performance.

It's your Monte Carlo.

INDULGE YOUR ALTER EGO.

Get in a Monte Carlo and you might feel a bit like TAZ, official mascot for Team Monte Carlo. Driving's just more fun in Monte Carlo.

*Monte Carlo Z34 Coupe in Torch Red.
Tasmanian Devil in natural attire.*







Monte Carlo Z34 Coupe in Black with optional rear spoiler.

Indulge Your Appetite for Asphalt In Monte Carlo Z34

Monte Carlo Z34 was born to challenge your favorite twisty two-lane highway. The standard 3800 Series II V6 is just part of this enthusiastic equation. There's also the electronically controlled four-speed automatic transmission that operates with world-class smoothness. And, there's a tuned Ride and Handling Suspension that turns an eye-catching coupe into a true sporting machine.

As you've no doubt noticed, Z34 wraps all this technology in a stunning envelope. Attention-getting details include aggressive machined-face aluminum wheels, body-color exterior trim and red Chevy "bowties" coming and going.

A note to enthusiasts: Be sure to check out the optional rear spoiler. It takes Z34 style to an even higher level.

SPECIALY TUNED SUSPENSION

A sophisticated Ride and Handling Suspension – with front and rear stabilizer bars – helps make Monte Carlo Z34 a true driver's car.



SPECIALY TUNED SUSPENSION

DISC BRAKES WITH ABS

Power four-wheel disc brakes (combined with a four-wheel anti-lock brake system) are standard on the Monte Carlo Z34.



DISC BRAKES WITH ABS

STANDARD 3800 V6 POWER

The highly acclaimed 3800 Series II V6 engine is standard in Z34. Horsepower is 200 at 5200 rpm.



STANDARD 3800 SERIES II V6 ENGINE





E UNLEADED FUEL F

10 20 30 40 50 60 70 80 90 100 110
0000000

0 1 2 3 4
RPM
X 1000

SEEK

VOLUME

PRESET AM/FM

PLAY MUTE


AIRBAG

This Is Where It All Comes Together.

The Monte Carlo Z34 instrument panel didn't just happen. When it came to the look, the feel, and the placement of every control, "good enough" was not in our vocabulary. Everything needed to be absolutely right. And, it is.

Gauges are precisely calibrated and clearly legible, day or night. The tilt wheel adapts to your driving style, the AM/FM stereo (with standard cassette tape player or optional CD player) adjusts volume as vehicle speed varies and halogen headlamps automatically brighten to full intensity for nighttime driving.

Is all this a bit much? In an ordinary car, perhaps, but not in Monte Carlo Z34.



The Monte Carlo Z34 instrument panel. Some optional equipment shown.

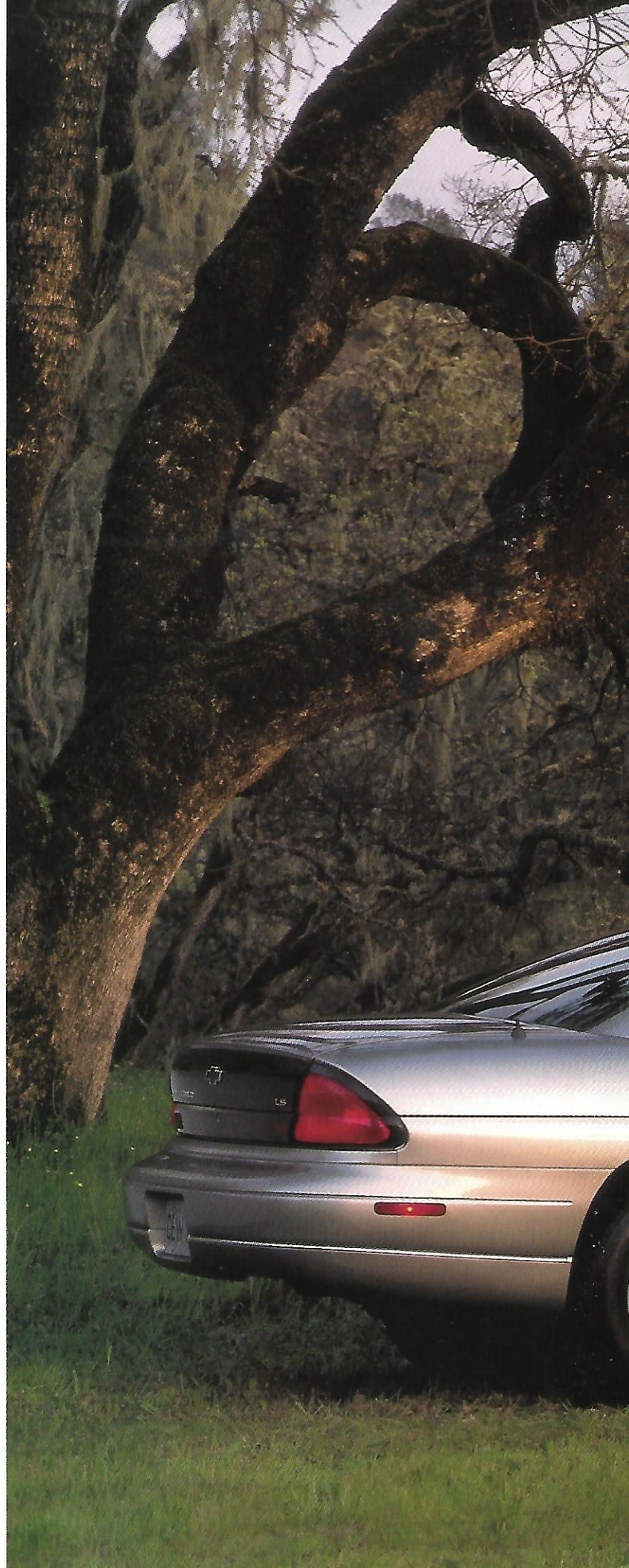
Escape the Ordinary In Monte Carlo LS.

Sometimes you need to take a detour from the routine and the predictable. Consider Monte Carlo LS your own subtle statement of defiance. Here is unconventional beauty and indulgent luxury, all for a price that's Genuine Chevrolet.

Monte Carlo LS is equipped the way you want it to be. A 200 hp, 3100 V6 engine and four-speed automatic transmission deliver impressive passing and merging power. Standard features in every LS: air conditioning, a gauge package with tachometer, electric remote outside mirrors and a passive theft-deterrent system.

Why should you settle for mere transportation, when you can have so much more? You belong in a Monte Carlo LS.

Monte Carlo LS Coupe in Light Pewter Metallic with optional body aluminum wheels.





MONTE CARLO







Fits Every Curve

Perfectly.

Inside every Monte Carlo LS is a luxurious interior, designed from the inside out around you, the driver.

Front bucket seats in Custom Cloth – with a center console and floor shift – are one option. Another: front bucket seats with leather seating surfaces (shown at left). The standard LS interior features a Custom Cloth split-bench front seat with center armrest.

Contoured, body-hugging seats are only part of this story. Standard conveniences in every Monte Carlo LS include power door locks, power windows with a driver's Express-Down feature, a convenient split-folding rear seat with trunk pass-through feature, plus reading, glove box and trunk lamps.

An AM/FM stereo with cassette player, automatic tone control, speed-compensated volume and digital clock is standard. Audio options include a CD player, and even "duplicate" steering wheel-mounted radio controls.

You're not merely surrounded by luxury in Monte Carlo. You're embraced.

Monte Carlo LS interior in Graphite with front bucket seats, leather seating surfaces and other options.

CUSTOM CLOTH BUCKET SEATS

The Monte Carlo LS Custom Cloth interior is available with optional front bucket seats (shown at right) or a standard 60/40 split-bench front seat with folding center armrest.



CUSTOM CLOTH INTERIOR WITH OPTIONAL BUCKET SEATS

STANDARD SCOTCHGARD™ PROTECTION

A standard feature that helps keep seat fabrics, door trim, floor carpeting and floor mats looking good, longer.



STANDARD SCOTCHGARD™ PROTECTION

STANDARD TRUNK PASS-THROUGH FEATURE

For cargo-carrying flexibility, Monte Carlo has a standard split-folding rear seat with a trunk pass-through feature.



STANDARD TRUNK PASS-THROUGH

CONVENIENTLY LOCATED CUP HOLDER

A cup holder – in the center armrest (with standard split-bench seat) or center console (with optional bucket seats) – is standard in every Monte Carlo.



CONVENIENTLY LOCATED CUP HOLDER

ELECTRIC SUNROOF

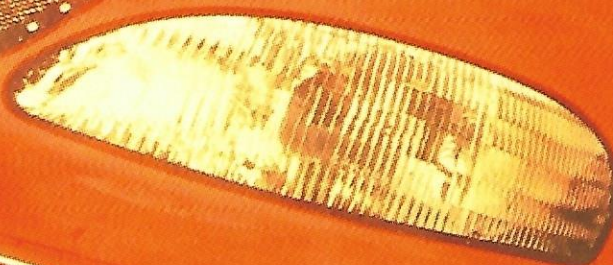
Put a little wind in your hair with the optional electrically operated sunroof. The panel is deep-tinted and includes a sunshade.



OPTIONAL ELECTRIC SUNROOF



CARLO



Western Auto
MOOG
CHASSIS PARTS

plasti-kote
SPRAY PAINT

SIMPSON

COMPETITION
CAMS

Edelbrock

MAP
TOOLS

JE
PISTONS

GOODYEAR



TEAM
MONTE CARLO



TOP ROW:

DALE EARNHARDT

Racing legend Dale Earnhardt embodies the winning attitude that drives Team Monte Carlo. Among his fellow competitors, he is known as "the Intimidator," a nickname he earned with the aggressive, hard-driving style that has garnered more than 70 career NASCAR Winston Cup victories, including the Daytona 500, and numerous Winston Cup Driver's Championships.

CENTER ROW:

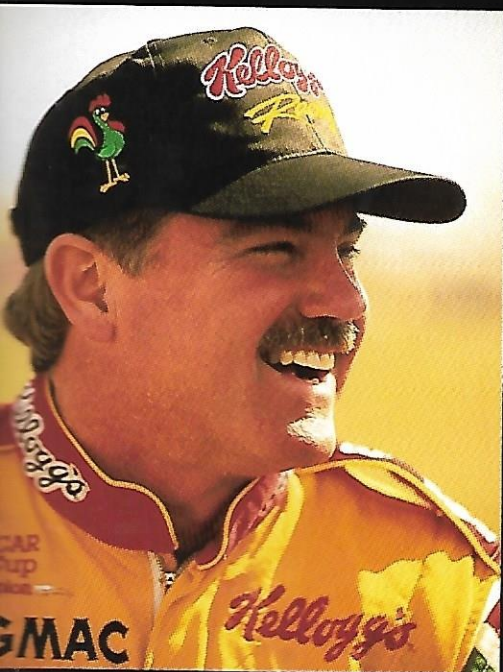
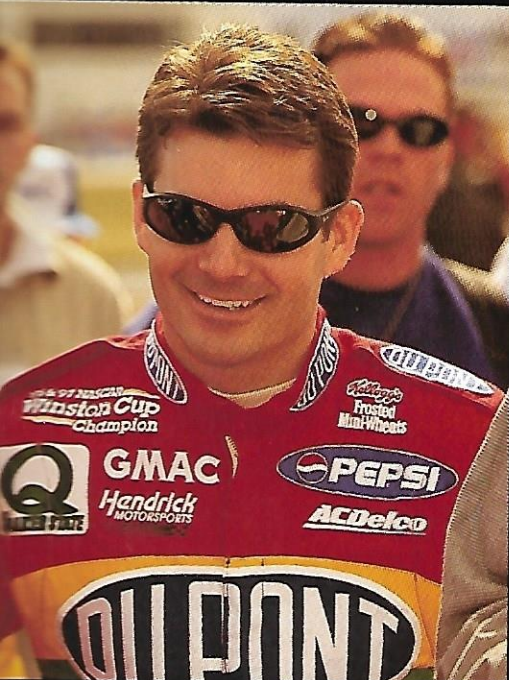
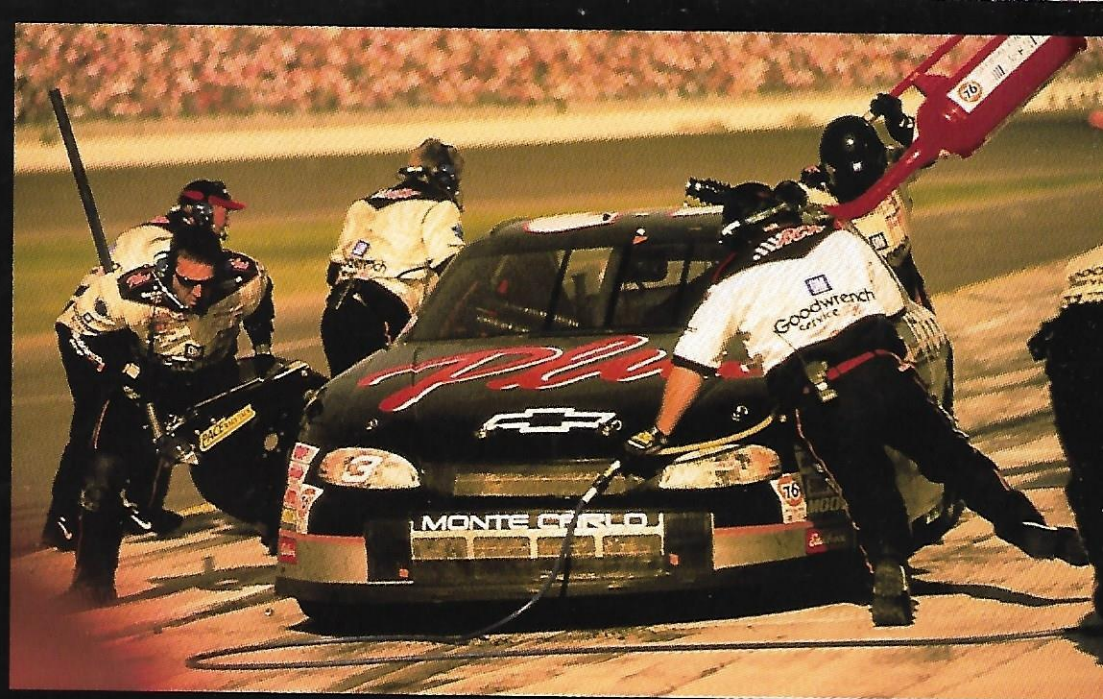
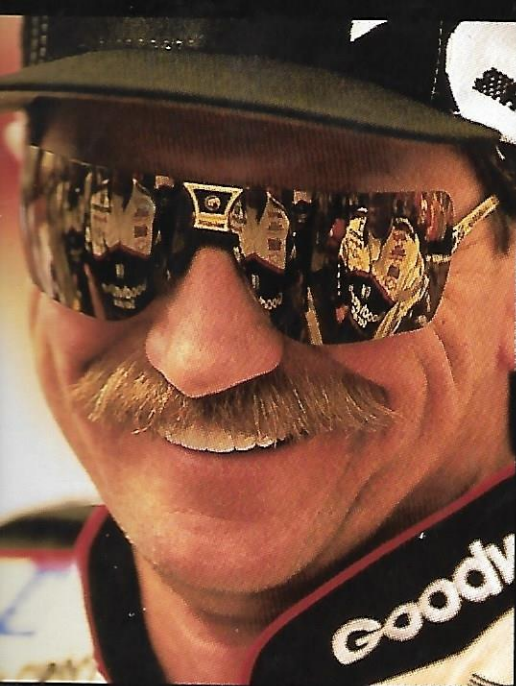
JEFF GORDON

In the late 1990s, Gordon has been a truly dominating force on the NASCAR circuit. His winning streak has included Winston Cup championships and victory at the Daytona 500.

BOTTOM ROW:

TERRY LABONTE

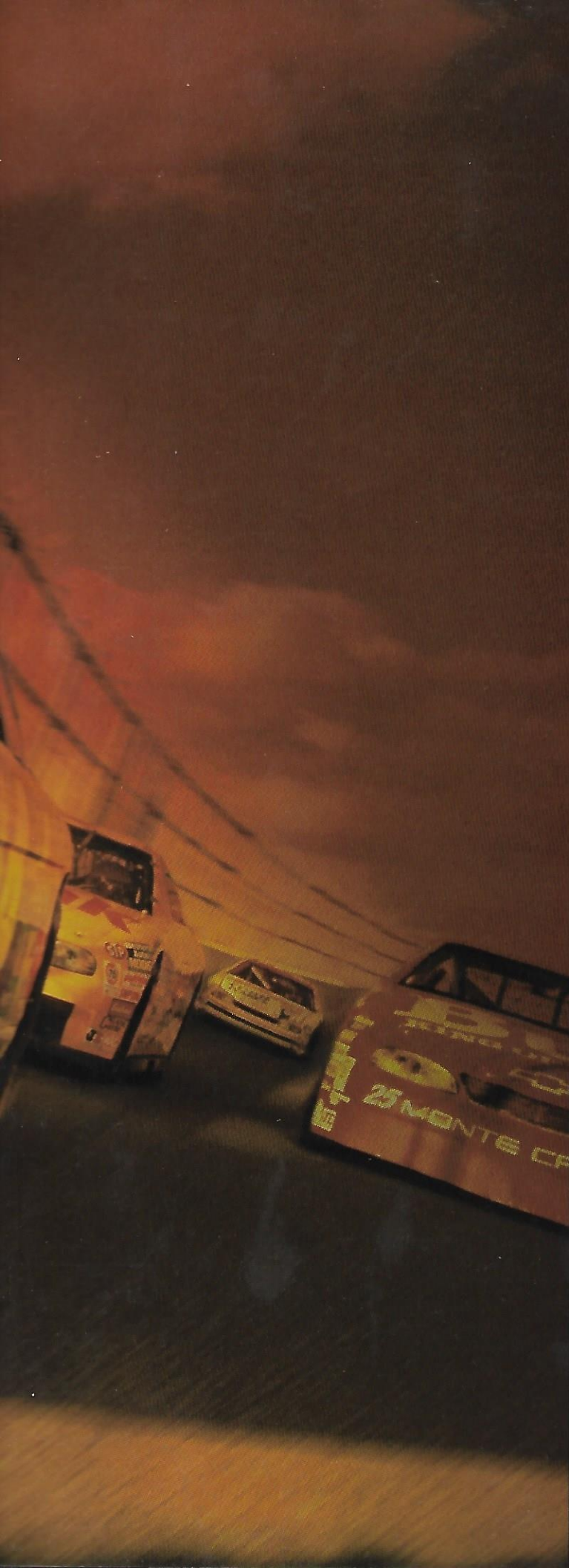
Terry Labonte, a native of Corpus Christi, Texas, drives the Kellogg's Corn Flakes Chevrolet Monte Carlo for Hendrick Motorsports. Labonte was the 1984 and 1996 Winston Cup Champion.



The Winningest Car in NASCAR Winston Cup History.

The racing version of Monte Carlo has claimed more victories than any other car in the history of NASCAR Winston Cup competition. And, Monte Carlo has carried more drivers to the NASCAR Winston Cup Driver's Championship than any other competitor.

Of course, some of what Chevrolet learns in racing, it puts into the Monte Carlo for the street. In fact, Monte Carlo puts a rather aggressive spin on the whole idea of performance-focused luxury. And you're the winner.





MONTE CARLO



Monte Carlo Is Ready For A Lasting Relationship.

You want a car you can believe in, from the moment you buy it to the day you trade it. Monte Carlo is a car worthy of that trust.

A car is only as good as its structure, and Monte Carlo's solid foundation contributes to its quiet ride and confident feel on the road. Monte Carlo excels in the details, too, from the "wow look" luster of exterior paint to the harmony of interior design.

Of course, the best measure of any car is quality over time, and this is where Monte Carlo will really impress you. Platinum spark plugs are first scheduled for replacement at 100,000 miles. There are no scheduled changes for the extended-life engine coolant for up to 150,000 miles or five years (whichever comes first). There are no engine timing adjustments required, ever. The chassis is lubed for life.*

Monte Carlo features two-side galvanized steel for all exterior body panels except the roof. That's why body sheet-metal components are warranted against rust-through corrosion for 5 years or 100,000 miles (whichever comes first).† And the exhaust system is made of rugged stainless steel.

*Maintenance needs vary with different uses and driving conditions. See owner's manual for more information.

†See your dealer for terms and conditions of this limited warranty.

**Monte Carlo LS Coupe in Dark Carmine Red Metallic
with optional sporty aluminum wheels.**

In Monte Carlo: Security Surrounds You.

You'll feel secure and confident in Monte Carlo. This carefully designed automobile surrounds you with high-strength steel safety cage construction and a comprehensive standard safety package.

You'll be well prepared for the unexpected, thanks to standard crash avoidance features, including a four-wheel anti-lock

brake system (ABS), Daytime Running Lamps with Automatic Exterior Lamp Control, and a brake/transmission shift interlock.

This standard safety package also includes Next Generation driver and right front-passenger air bags, safety shoulder belts for all outboard seating positions, energy-absorbing front and rear crush zones and high strength side door beams.*

For theft deterrence, every Monte Carlo includes a totally passive PASS-Key II security system, inside remote hood release and a laser-etched VIN plate.

A well-engineered, standard safety package provides the security you need. And, it's yours in Monte Carlo.



***A NOTE ON CHILD SAFETY:**

Children are generally safer if they are secured in a rear seat using the appropriate child safety seats and restraints, which is why General Motors recommends that child safety seats be properly secured in a vehicle's rear seat. Never place a rear-facing infant restraint in the front seat of any vehicle equipped with an active air bag. See your vehicle's owner's manual and child safety seat instructions for more safety information.

SAFETY-CAGE CONSTRUCTION

High-strength steel safety cage (with reinforced floor and body sills, roof construction and pillars, and steel side door beams) surrounds the passenger compartment.

DAYTIME RUNNING LAMPS (DRL) WITH AUTOMATIC EXTERIOR LAMP CONTROL

During daytime driving situations, reduced-intensity headlamps come on automatically to alert other roadway users to your oncoming vehicle. At night, headlamps adjust to regular intensity and other exterior lamps come on automatically.

FOUR-WHEEL ANTI-LOCK BRAKES

ABS is standard in every Monte Carlo. ABS helps reduce wheel lockup while braking, and is designed to help you maintain steering control and to prevent skidding on most slippery surfaces.

REAR-SEAT SAFETY BELT COMFORT GUIDES

Monte Carlo is equipped with rear-seat safety belt child comfort guides that make wearing safety belts more comfortable for older children who have outgrown available child restraints. There are also safety belt cinch capability for child safety seats and adjustable upper safety belt anchors for out-seat passengers. See the Monte Carlo owner's manual for more information.

STANDARD PASS-KEY II

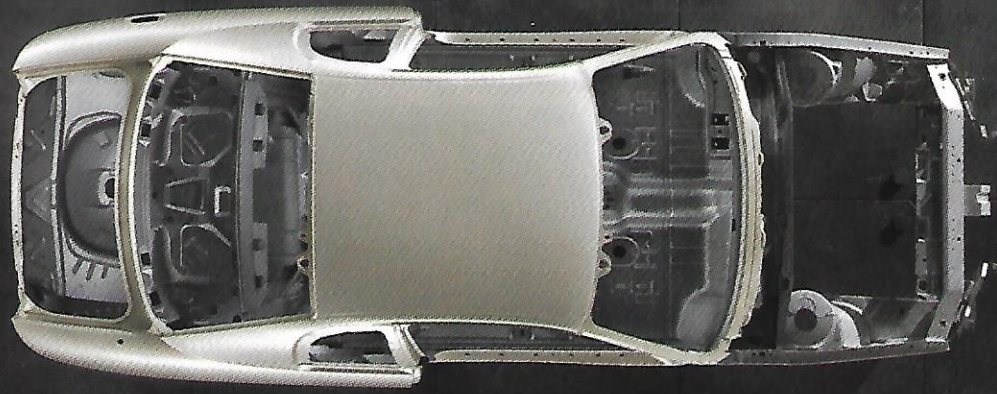
The standard PASS-Key II theft-deterrent system means only your specially coded key starts your Monte Carlo. You'll feel secure knowing the totally passive PASS-Key system is working for you.

REMOTE KEYLESS ENTRY SYSTEM

Lock or unlock your car, turn on interior lights or open the trunk from up to 30 feet away with this option. A great security feature that lets you get in – and get going – quickly. Standard on Z34 and optional on LS.

ONSTAR

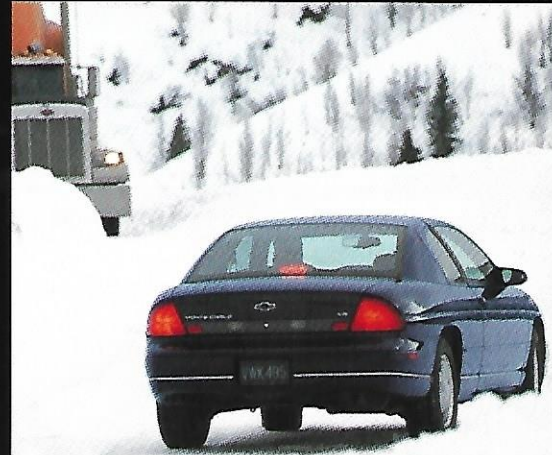
With this remarkable service, day or night, an OnStar Advisor is available to provide emergency help, directions, hotel, restaurant locations and much more. In an accident where the air bags deploy, OnStar will automatically send a call for help and your vehicle's location to the OnStar Center, where trained Advisors will immediately contact emergency assistance. OnStar is a dealer-installed option. For more information, call 1-888-667-8277.



SAFETY CAGE CONSTRUCTION



DAYTIME RUNNING LAMPS



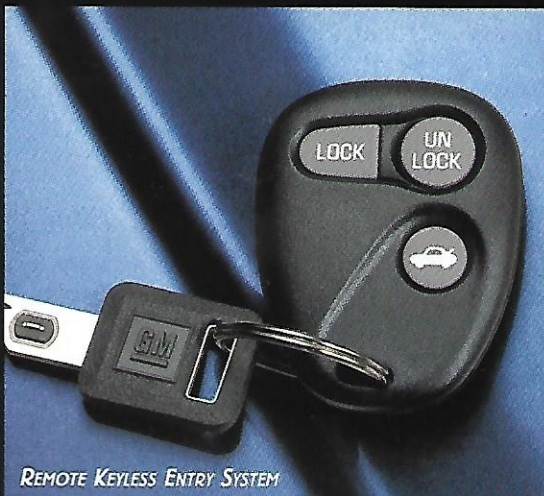
FOUR-WHEEL ANTI-LOCK BRAKES



REAR-SEAT SAFETY BELT COMFORT GUIDES



STANDARD PASS-KEY II



REMOTE KEYLESS ENTRY SYSTEM



ONSTAR

Monte Carlo Buyer's Guide

Monte Carlo LS Preferred Equipment Group

NOTE: This optional Preferred Equipment Group (PEG) is designed to help simplify the buying process. You may also add selected individual options (see Standards & Options chart for availability). Some restrictions apply. Please see your salesperson for details.

Preferred Equipment Group	LS
Electronic speed control	■
Luggage-area cargo net	■
Power trunk opener	■
Remote Keyless Entry system	■
Temperature controls, driver/front passenger	■

■ - Included in Preferred Equipment Group.

Standards & Options

NOTE: Some individually available options listed below are included in the Preferred Equipment Group. Some restrictions may apply. Please see your salesperson for details.

Exterior	LS	Z34
5 mph bumper system	S	S
Body-side moldings	S	S
Composite halogen headlamps	S	S
Daytime Running Lamps w/Automatic Exterior Lamp Control	S	S
Rear spoiler	O	O
Sport mirrors, body-color, dual electric remote	S	S
Two-side galvanized steel (all exterior body panels except roof)	S	S

Interior	LS	Z34
Air conditioning (with CFC-free refrigerant)	S	S
Auxiliary lighting (dome, dual reading, glove box and trunk)	S	S
Carpeted front and rear floor mats	S	S
Cup holder (two with 60/40 front seat)	S	S
Delayed entry/exit lighting with theatre dimming	S	S
Electric rear-window defogger	O	O
Electric sliding sunroof	O	O
Electronic speed control	O	S
Gauge package with tachometer and trip odometer	S	S
Headlamps-on reminder tone	S	S
Intermittent variable windshield wiper system	S	S
Low oil level/wear indicator and low coolant level lights	S	S
Luggage-area cargo net*	O	S
Next Generation driver and right front-passenger air bags	S	S
OnStar System (dealer-installed)	O	O
PASS-Key II theft-deterrent system	S	S
Power door-lock system	S	S
Power driver seat (6-way)	O	O
Power trunk opener*	O	S
Power windows with driver's Express-Down feature	S	S
Rear-seat safety belt child comfort guides	S	S

Interior (contd.)	LS	Z34
Remote Keyless Entry system	O	S
Scotchgard™ protection on cloth seats, door trim, floor carpeting and floor mats	S	S
Seats: Custom Cloth 60/40 split-bench front seat with center storage armrest and cup holder	S	-
Seats: Custom Cloth front bucket seats with storage console and cup holder	O	S
Seats: Front bucket seats with leather seating surfaces (includes storage console and cup holder)	O	O
Side-window defoggers	S	S
Solar-Ray windshield and back glass (tinted glass, all windows)	S	S
Split-folding rear seat	S	S
Temperature controls, driver/front passenger*	O	S
Tilt-Wheel™ steering column	S	S
Visor mirrors, left-hand and lighted right-hand	S	S

*Requires optional Preferred Equipment Group.

Delco Electronics Sound Systems

NOTE: Sound systems include an Electronically Tuned Receiver (ETR) with AM/FM stereo, premium front and rear coaxial speakers, 12 FM/6 AM station pre-sets and digital clock.

Stereo: AM/FM with cassette player, auto reverse, automatic tone control, TheftLock security feature and speed-compensated volume	S	S
Stereo: AM/FM with compact disc player, automatic tone control, TheftLock security feature and speed-compensated volume	O	O
Radio controls, duplicate steering wheel-mounted (includes leather-wrapped steering wheel)	O	S
Remote CD changer (dealer-installed)	O	O

Power Teams/Chassis

V6 engine: 3100 with Sequential Fuel Injection	S	-
V6 engine: 3800 Series II with Sequential Fuel Injection	-	S
Transmission: 4-speed electronically controlled automatic with overdrive	S	S
Battery: Maintenance-free	S	S
Brakes: 4-wheel anti-lock system (ABS)	S	S
Brakes: Power front disc/rear drum	S	-
Brakes: 4-wheel disc	-	S
Power rack-and-pinion steering	S	S
Stainless-steel exhaust system (dual outlet on Z34)	S	S
Suspension: 4-wheel independent	S	S
Suspension: Ride and Handling	-	S

Wheels

Wheels: 15" x 6" with bolt-on full wheel covers	S	-
Wheels: 16" x 6.5" sporty aluminum*	O	-
Wheels: 16" x 6.5" aluminum, (machined-face)	-	S
Tires: P205/70R-15 touring	S	-
Tires: P225/60R-16 touring	O	-
Tires: P225/60R-16 Goodyear Eagle RS-A performance	-	S

S - Standard. O - Optional. *Requires optional 16" touring tires.

Data

Exterior Dimensions (in.)

Wheelbase	107.5
Length (overall)	200.7
Width (overall)	71.9
Height (overall)	53.8

Interior Dimensions (in.)

Headroom - front	37.9
Headroom - rear	36.9
Legroom - front	42.4
Legroom - rear	34.9
Arm room - front	53.4
Arm room - rear	51.6
Shoulder room - front	57.5
Shoulder room - rear	57.6

Capacities

Passenger capacity	6*
Luggage capacity (cu. ft.)	15.5
Fuel tank capacity (gal., approx.)	16.6

*Passenger seating with bucket seats.

Trailer

Trailer classification	Light
Gross trailer weight (lbs., up to)	1000
Maximum tongue load (lbs.)	100

*Additional equipment required.
 See your dealer for further trailering information.

NOTE: Tire chains should not be used on Monte Carlo models equipped with P255/60R-16 tires because they could cause damage to these vehicles.

Color Availability

Exterior Colors	Interior colors			
	Med. Gray	Graphite	Neutral	Blue
Medium Auburn	■	■	■	
Nightmist Metallic*	■	■	■	
Black	■	■	■	
Medium Regal Blue Metallic*	■	■	■	■
Navy Blue Metallic	■		■	■
Light Driftwood Metallic			■	
Dark Jade Green Metallic	■	■	■	
Light Pewter Metallic	■	■	■	
Dark Carmine Red Metallic	■	■	■	
Arch Red	■	■	■	
Light White	■	■	■	■

*Not Available on Z34.

Custom Cloth Trim



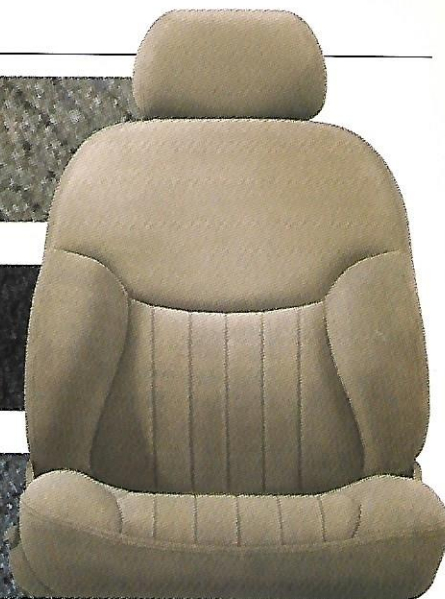
Medium Gray



Graphite



Blue



Neutral

Optional Leather Seating Surfaces*

*Leather on seating surfaces only.
 Excludes center rear-seat position.



Graphite

Neutral



15" deluxe bolt-on wheel cover.
 Standard on Monte Carlo LS.



16" sporty aluminum wheel. Optional
 on Monte Carlo LS.



16" machined-face aluminum wheel.
 Standard on Monte Carlo Z34.

Genuine Customer Care.



Never Travel Alone.

Vehicle Limited Warranty

Warranty is for GM vehicles registered in the United States. Please contact your Chevrolet dealer for complete terms and conditions of this New Vehicle Limited Warranty.

Covered for 3 Years or 36,000 Miles.*

The complete vehicle



Sheet-metal coverage:
■ Corrosion coverage
■ Rust-through coverage†

Tires



Repairs made to correct any vehicle defect

Towing to your nearest Chevrolet dealership



No charge for most warranty repairs.

*Whichever comes first, 3 years or 100,000 miles, whichever comes first.

COURTESY TRANSPORTATION

Customers who purchase or lease a 1999 Chevrolet Monte Carlo for Courtesy Transportation have their vehicles left at a participating dealership for repairs under the 3-year/36,000-mile New Vehicle Limited Warranty. Courtesy Transportation, at participating dealers

only, may include shuttle service, expense reimbursement or, if the repair requires the vehicle to stay at the dealership overnight, vehicle rental. Actual services may vary at the election of the participating dealer. See your dealer for details.

ROADSIDE ASSISTANCE*

Roadside Assistance service is provided through a toll-free 800 number, 24 hours a day, 365 days a year. Assistance advisors can handle minor mechanical concerns by phone or coordinate services through skilled professional service providers.

*Roadside Assistance membership is free. Some services may incur costs. Courtesy Care is available to retail, retail lease and corporate lease customers operating 1994 and newer Chevrolet vehicles for a period of 3 years/36,000 miles. All Courtesy Care services' associated costs must be prearranged by Chevrolet Roadside Assistance or dealer service management and must be driver-initiated. Basic Care and Courtesy Care are not part of or included in the coverage provided by the New Vehicle Limited Warranty. Chevrolet reserves the right to modify or discontinue Basic Care and Courtesy Care at any time. See dealer for complete details of the Chevrolet Roadside Assistance Program.

Courtesy Care Provides:

Toll-free access
1-800-CHEV-USA



Basic over-the-phone technical advice

Free towing to nearest dealer for warranty repairs



Dealer services at a reasonable cost (i.e., wrecker services, locksmith/key service, glass repair, etc.).

Courtesy Care, Which Applies for 3 Years/36,000 Miles, Provides:

Basic Care services



Free fuel delivery

Free locksmith/key service (when keys are lost on the road or locked inside)



Free non-warranty towing

Free flat tire change service



Free jump start.

Additional Information.

PLEASE CONTACT US ...

For any additional information on 1999 Chevrolet car or truck products, call 1-800-950-2438 or visit us on the Internet at <http://www.chevrolet.com>.

CUSTOMER ASSISTANCE

The Chevrolet Customer Assistance Center (CAC) has a special toll-free number (1-800-222-1020). It puts you in contact with Chevrolet Specialists who can handle any product/service question or concern you may have.

SMARTLEASE BY GMAC makes it easy to enjoy the technology, style and fun of a brand new Monte Carlo. With SMARTLEASE, qualified customers can be approved in about one hour, and you'll enjoy low SMARTLEASE monthly payments. Plus, SMARTLEASE offers you choices at the end of your lease. You can either buy your Monte Carlo at a price guaranteed up front, or return your vehicle with no other obligations - providing the terms of the lease have been met. For more information about SMARTLEASE or any of the other quality GMAC financing options, see your Chevrolet dealer or call 1-800-32-SMART.

TURN PLASTIC INTO STEEL WITH THE GM CARD®.

The GM MasterCard® gives you an important financial advantage on your next purchase or lease of a GM vehicle. Use the GM Card for purchases and you'll receive up to 5% of that purchase amount in GM Card Earnings. That's over and above any other discount or incentive. To request your GM Card, call 1-800-8GM-CARD.

THE GM MOBILITY PROGRAM

Chevrolet recognizes the importance of mobility to everyone's life and, therefore, offers financial assistance to persons with disabilities through General Motors Mobility Program. This program can provide up to \$1,000 reimbursement toward the cost of aftermarket mobility adaptive equipment for drivers or passengers, \$200 of which may be applied towards a siren detector for drivers who are deaf or hard-of-hearing. For details and free resource information, call 1-800-323-9935. (TTY users: 1-800-833-9935).

UPDATED SERVICE INFORMATION

Chevrolet regularly sends its dealers useful service bulletins about Chevrolet products. Chevrolet monitors product performance in the field. We then prepare bulletins for servicing our products better. Now you can get these bulletins, too. Ask your dealer. To get ordering information, call toll free 1-800-551-4123.

ASSEMBLY

Chevrolts and their components are assembled or produced by different operating units of General Motors, its subsidiaries or suppliers to GM worldwide. We sometimes find it necessary to produce Chevrolts with different or differently sourced components than originally scheduled. Since some options may be unavailable when your vehicle is assembled, we suggest that you verify that your vehicle includes the equipment you ordered or, if there are changes, that they are acceptable to you.

ENGINES

Chevrolts are equipped with engines produced by different operating units of GM, its subsidiaries or suppliers to GM worldwide.

CORROSION PROTECTION

Chevrolts are designed and built to resist corrosion. All body sheet-metal components are warranted against rust-through corrosion for 6 years or 100,000 miles, whichever comes first. Application of additional rust-inhibiting materials is not required or recommended. See your Chevrolet dealer for terms of this limited warranty.

GM PROTECTION PLAN

The GM Protection Plan offers service protection in addition to that provided by GM's New Vehicle Limited Warranty. Ask your dealer about it. Coverage available only in the U.S. and Canada.

A WORD ABOUT THIS BROCHURE

We have tried to make this brochure comprehensive and factual. We reserve the right, however, to make changes at any time, without notice, in prices, colors, materials, equipment specifications, models and availability. Since information may have been updated since the time of printing, please check with your Chevrolet dealer for complete details. Chevrolet reserves the right to lengthen or shorten the model year for any product for any reason, or to start and end model years at different times.

Tasmanian Devil™ & © 1998 Warner Brothers. General Motors, GM, the GM Emblem, Chevrolet, the Chevrolet Emblem, ETR, Genuine Chevrolet, Malibu, Cavalier, Lumina, Camaro, Corvette, Prizm, Metro, Monte Carlo, Solar-Ray, 1-800-CHEV-USA, Z34 and OnStar are registered trademarks and Chevy is a trademark of the General Motors Corporation. PASS-Key and TheftLock are registered trademarks of the Delco Electronics Corporation. Scotchgard is a trademark of 3M company. GMAC, SMARTBUY and SMARTLEASE are registered trademarks of the General Motors Acceptance Corporation. © 1998 General Motors Corporation. All rights reserved.



Litho in USA.

June 1998



PROUD SPONSOR OF THE
2000 U.S. OLYMPIC TEAM

Exterior Colors



*Medium Auburn
Nightmist Metallic*



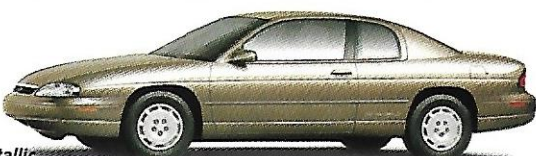
Black



*Medium Regal
Blue Metallic
(not available on Z34)*



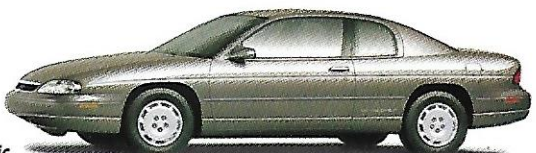
*Navy Blue
Metallic*



*Light
Driftwood Metallic*



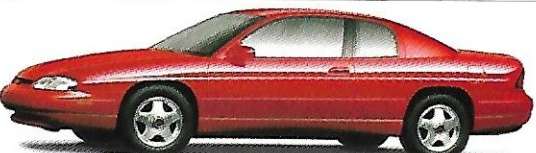
*Dark Jade
Green Metallic*



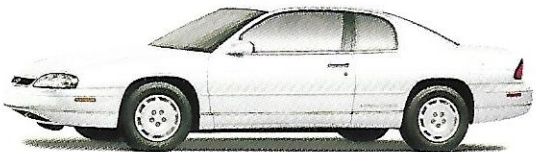
*Light
Pewter Metallic*



*Dark Carmine
Red Metallic*



Torch Red



Bright White

*Over the last 87 years,
Chevrolet has become a part of the American landscape.
It's in our songs. It's in our movies. It's on our roads.
Maybe that's because Chevrolet has always worked hard to build
performance, style and quality
into dependable, long-lasting cars that go the distance.
Through the years, and across the miles,
Chevy's always been there.
And wherever America's going ...
We'll Be There.*

Genuine Chevrolet 
The Cars More Americans Trust.

www.chevrolet.com