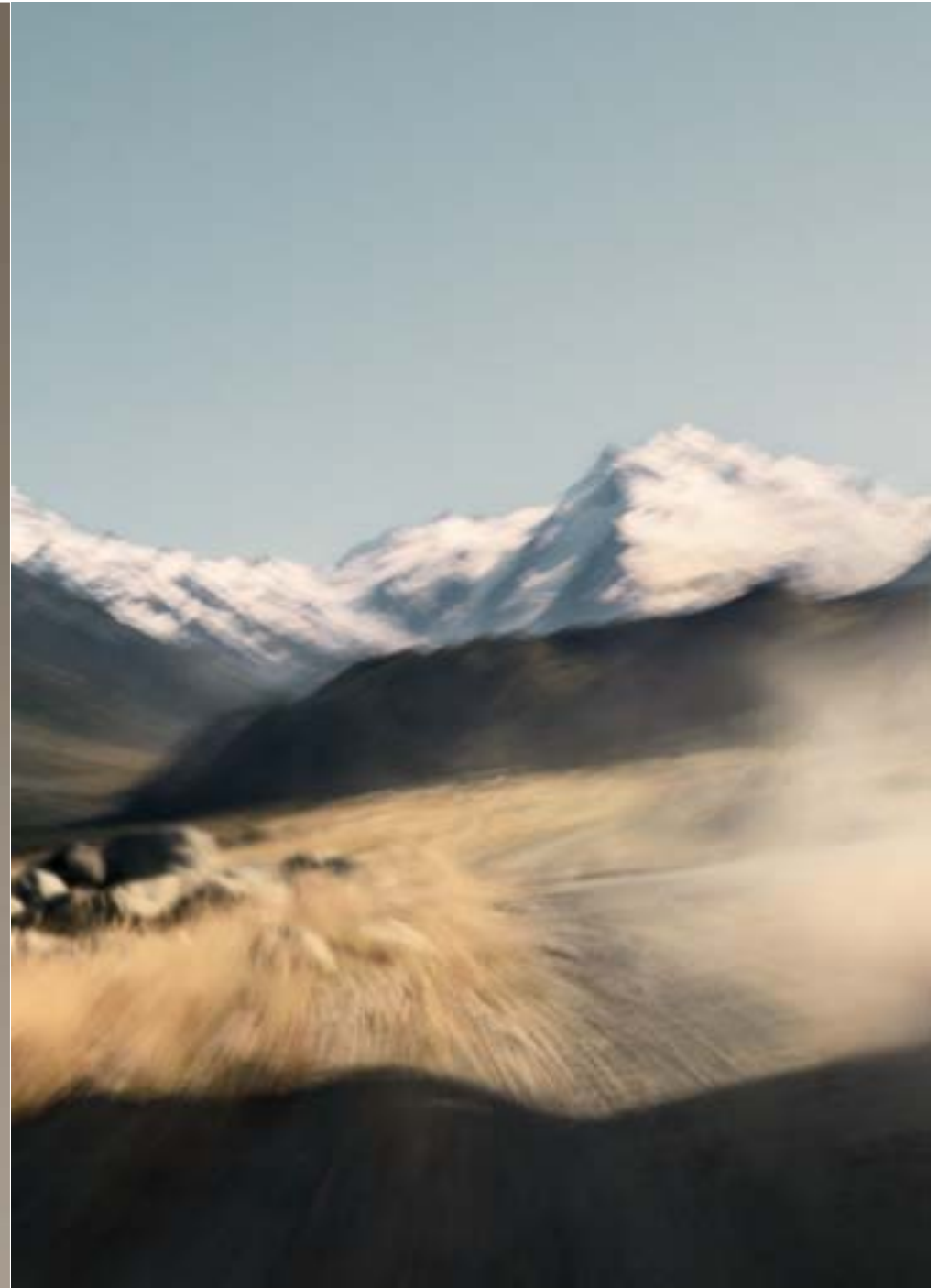


# THE ALL-NEW VOLVO XC70



Round peg  
escapes square hole.

**Volvo. for life** A passion for safety  and the environment  – for well-being  
inside and outside your Volvo.













No risk of mutiny here.

#### **Keyless drive**

Keyless Drive allows you to lock, unlock and start the car without having to have the key in your hand. It is sufficient that you have the key with you in your pocket or in your handbag. Just grasping the door handle unlocks the door. Start the car by just turning the ignition control on the instrument panel.



#### **Interior Air Quality System (IAQS)**

IAQS monitors incoming air. If necessary, it will temporarily close external air vents to shut out carbon monoxide, ground-level ozone and nitrogen dioxide. Meanwhile, an active carbon filter prevents dust, exhaust particles, pollen and unpleasant odours from entering the car through the ventilation system.



Built to take you farther and keep you safer, this all-new Volvo XC70 takes on any and all roads and, may we suggest, improves upon them all considerably. While the all-new exterior is fit for excursions outside city limits, the all-new interior provides its own escape with highly civilised comfort and class. Innovations include available integrated child booster seats with two stages for growing children, laminated glass available all around (a world first for estates) and there's a powerful six-cylinder engine available for the first time in a Volvo XC70.



#### **2-Stage Booster Cushion (optional)**

A world first, these integrated seats adjust to two heights to accommodate children of different sizes. Now even smaller children can be seated higher to enjoy a safer and more comfortable ride. What's more, the inflatable curtains in the all-new Volvo XC70 have been extended by 2.4 inches, which, in combination with the height-adjustable booster cushions and the stronger body side structure, provide more children of different sizes with better protection in a side impact.

#### **Heated rear seats (optional)**

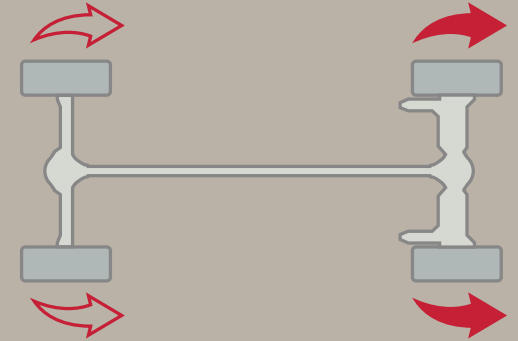
Your rear seat occupants can now enjoy the luxury of heated seats. The rear seats also feature new 40/20/40 splits that provide two distinct seats with a solid armrest in the middle. This armrest can also be raised to provide a middle seat. Lowering the entire center section provides ample space for loading long items. What's more, the rear seats now only take one step to maneuver.

Until roads are built like Volvos,  
you would do well to own this car.





Sweden offers many challenges for cars and drivers. Extreme temperature changes and the weather that comes with them are but a few examples. The terrain itself is of many moods. Every car we make has to be able to handle it here. Of course, this makes the all-new Volvo XC70 extremely well suited to handle roads of any caliber (including roads that aren't roads at all but are, in fact, frozen lakes).



#### **AWD with Instant Traction™**

The advanced Haldex® AWD system with Instant Traction™ has an electronic management system that constantly monitors the speed of the wheels, the throttle, engine torque, engine speed and the brakes. As driving conditions change, wheels with the best grip get the most power. When a tire loses traction, power is reduced to that wheel and instantly transferred to the more sure-footed wheels.

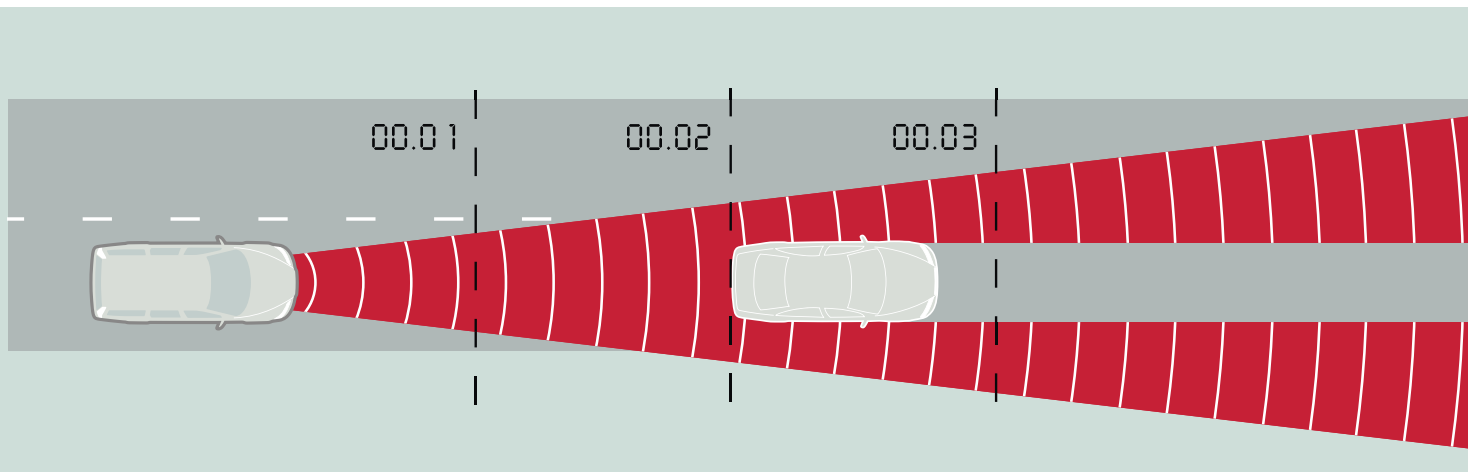
#### **Chassis & steering**

The chassis makes the most of its multi-link rear suspension to counteract any tendency to understeer while enhancing comfort. The McPherson front suspension struts promote quick response and the speed-dependent rack and pinion steering provides distinctive yet balanced feedback.

Driving is not a contact sport.



The all-new Volvo XC70 expands the concept of space to include the distance between you and the car in front of you. Maintaining this space automatically while using cruise control takes more than common accelerator management. The optional Volvo Adaptive Cruise Control system also employs state of the art radar technology with Volvo's sophisticated braking systems. All of this automated intelligence can help you maintain a safe distance at speeds above 18 mph, but please note, it will not come to your rescue if you're driving style is inappropriate for conditions.



#### **Adaptive Cruise Control (ACC) (optional)**

ACC is designed for smooth traffic flow. You just select the desired speed and the minimum time gap to the vehicle in front of you. When the radar sensor detects a slower vehicle in front of you, the speed automatically adapts to that vehicle.

#### **Collision Warning with Brake Support (optional)**

Collision Warning with Brake Support is designed to sense an impending collision and alert the driver to help avoid or reduce the severity of a crash. A radar sensor behind the grille continuously monitors the distance to the vehicle driving in front of you. If the vehicle suddenly brakes and the system senses that a collision is likely to happen, it will alert the driver to act with flashing red warning light on the windscreen and an audible alarm. Moreover, the system supports driver-initiated braking by obtaining swift brake response by pre-charging the brakes and preparing for panic brake application. Collision Warning with Brake Support will thus help to alert the driver to avoid a collision and in some situations to help reduce the severity of a crash.



#### **Emergency Brake Lights (EBL)**

Active at speeds above 37 mph, the EBL system can sense the difference between normal and panic braking. If it is a panic situation, all brake lights will flash at a rate of five times per second. Once your speed slows below 6 mph, the lights stop flashing and hazard lights flash instead. Using LED bulbs that need less time to light up than regular bulbs, traffic behind you can react sooner.



# VNS. Why some men never stop to ask for directions.

There is nothing so wrong with pride and determination that a little guidance can't fix. Having an intelligent companion on board to help with the navigation is the easiest way to get where you're going. Sometimes, stopping for directions is impossible or ill-advised and in the case of some people, inconceivable. The available Volvo Navigation System (VNS) can be your go-to guide. Detailed maps are accessed direct from DVD and there's no shame in that. Having the information you need to get where your going is reason enough to keep driving.

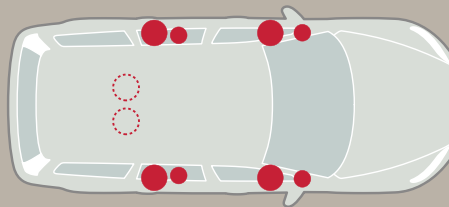


# If it's peace and quiet you seek, skip this part.

Volvo's modern sound systems are among the best in class—especially with the latest generation of Dolby® Pro Logic® II Surround and rich Dynaudio loudspeakers. Dolby® Pro Logic® II Surround utilizes a center loudspeaker and sophisticated sound processing calibrated especially for the interior of the all-new Volvo XC70. This system ensures that every passenger enjoys a well-balanced stereo presence regardless of seating position—a remarkable achievement considering how close passengers sit to one side.



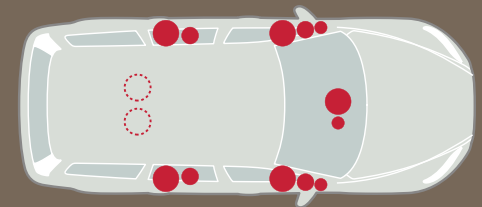
**DYNAUDIO**  
AUTHENTICITY. FIDELITY.



## High Performance (standard)

This is a powerfully versatile system. Each loudspeaker is fitted with a more powerful magnet and a larger coil. In combination with the amplifier, this system promotes excellent transient reproduction and high power—quite simply superb sound. This High Performance system includes:

- In-dash CD
- 4x40 W amplifier
- 8 High Performance loudspeakers
- MP3 and WMA compatible CD player
- AUX input



## Dynaudio Premium Sound System (optional)

This is our top-of-the line audio system designed for dynamic clarity with the entire sound spectrum. This system features twelve loudspeakers by Danish sound specialist Dynaudio. In addition, Dolby® Pro Logic® II Surround helps tailor a well-balanced audio experience for each occupant. Premium Sound includes:

- In-dash 6-CD changer
- SIRIUS Satellite Radio
- 5x130 W digital class D amplifier
- Dolby® Pro Logic® II Surround
- 12 Premium Sound loudspeakers by Dynaudio
- MP3 and WMA compatible CD player
- AUX input





#### **Hill Descent Control (HDC)**

A new standard feature in all-new Volvo XC70 is the Hill Descent Control. This system offers a smooth and controlled hill descent on steep, rough roads. You simply push the HDC button and the vehicle will descend using the brake system to control each wheel's speed, so that you can concentrate fully on steering. Hill Descent Control is also very useful on slippery ramps—when reversing down to hitch up a boat trailer, for example.





Hold on tight.



#### **Cargo volume**

The cargo volume of the all-new Volvo XC70 is 20.3 cubic feet with the rear seatbacks up. This includes up to 1.6 cubic feet cleverly hidden under the floor.

#### **Loading systems**

The floor of the cargo compartment features Cargofix rails fitted with four sliding hooks that can be used to secure items. When not in use, the hooks retract into the load rails. Additional hooks are provided on both sides of the load compartment just below the rear side windows. Load carriers, load covers, a sliding floor and more accessories are available to insure your cargo always travels first class.



#### **Load security**

Loading straps, cargo nets, load covers, load carriers and cargo partitions can help keep your things where you put them.

Fold down as much of the 40/20/40 split rear seat as you need to combine cargo and passengers comfortably and safely. The head restraints tuck conveniently out of the way, providing a flat-floored loading compartment. You can also add a floor-attached load securing net and a net pocket for each side panel. To conceal equipment in the load compartment, simply pull out the retractable load cover.

For unexpected shopping bargains and particularly bulky items, you can fold the front passenger backrest forwards. This provides a long, flat-floored loading compartment from the tailgate to the dashboard. If that's not enough, there's a Volvo roof-mounted carrying system to keep your stuff high and dry.

#### **Versatility**

Load up. The new 40/20/40 split rear seats fold flat in just one step: backs fold forward, seat cushions stay put.

#### **Storage**

Put small items in the glove box, center console, in the door or front seat compartments (front and back), or under the cargo floor.





No journey too far. No weekend too long.





# Built to protect you and yours. Even while parked.



Standard security features such as the sturdy door locks and the electronic immobilizer help to prevent the tangible aspects of a break-in. The optional personal car communicator, on the other hand, offers you the comfort of knowing the car's status even when you can't see it. To further foil smash and grab burglaries, the closed tailgate—just by the function of its elegant design—overlaps and seals the compartment hidden under the cargo floor. To keep this private storage area inaccessible to other users of the car, e.g., valet parking, you can set your private locking preferences to include the tailgate with your other lockable storage areas.

#### **Ground lighting**

Integrated in the door mirror, ground lighting is activated with the remote control or PCC. Beyond enhancing security to and from your car at night, it's also convenient when getting in and out.

#### **Remote controlled alarm**

Connected to the doors, hood, tailgate and ignition, the alarm reacts to movement inside the car or the breaking of a window. A level sensor can be added to deter thieves from jacking-up the car and stealing your wheels. In an emergency situation, a panic button on the remote control or PCC allows you to raise the alarm for help.

#### **Approach and Home Safe Lighting**

Activated with the remote control, Approach Lighting provides a warm reception on a dark night. This consists of interior and side lights—ground lighting too, if you choose it. Home Safe Lighting is activated with the headlight stalk as you leave the car and it provides a similar courtesy when exiting your car. This feature includes a dipped beam from the headlight to accompany you to your door.

#### **Personal Car Communicator (PCC) (optional)**

This convenience combines keyless drive with an interactive communication device that fits in the palm of your hand. Keep the PCC with you and the car unlocks automatically on your arrival. Start the engine by pressing a button on the dash. Lock the car by pressing a button in the door handle. Later in the day, if you're wondering whether you've locked the car, the PCC can remind you. On your return to the Volvo XC70—within a radius of 300 feet—the PCC can provide a current report on its status. Press the information button; a green light means it's locked, a yellow light means it's unlocked, a red light means the alarm has been triggered. If the red light is flashing, then somebody is in your car. In this case, thanks to the onboard heart-beat sensor, you've got advanced warning and an opportunity to evaluate the situation safely.



# ⊕ This is where life starts.



"Safety is our promise. People trust us, and that's a big responsibility. This is what we think about daily when we make our safety decisions. We have to maintain this trust—not only with words, but with actions. That's also why the safety in a Volvo always begins and ends in a real life situation."

Ingrid Skogsmo, Director Volvo Car Safety Center

Inaugurated in 2000, the Volvo Car Safety Center in Göteborg is the world's most advanced crash laboratory. All with the purpose to imitate traffic situations and crashes as they happen in real life. Here we recreate crashes with all kinds of vehicles and road obstacles at any angle from 0 to 90 degrees and speeds up to 75 mph. We perform realistic roll-over tests and test cars in terrain as well as against genuine Swedish granite rock-face—we can even simulate impacts with wild

animals such as a 1100 lbs Swedish moose. Of course, these crash tests also incorporate advanced crash test dummies representing a wide range of sizes and ages—from infants to full-grown adults.

Every crash is thoroughly documented using high-speed cameras and analyzed into fragments of thousands of seconds. We even store crashed cars for a period for future reference. Beyond countless computer simulations, we conduct over 400





full-scale crash tests each year. These tests are based on what our Accident Research Team discovers on the road. Since 1970, our researchers have investigated over 36,000 real-life accidents. This gives us unique opportunities to learn what works in real life and what doesn't—knowledge that actually helps save lives.

#### Life-saving knowledge

Many of the safety features found in a Volvo are based on the findings from the Volvo Accident Research Team. A few recent examples are the collapsible steering column, the energy-absorbing frontal structure, Volvo's child safety equipment, the Side-Impact Protection System (SIPS) and the Whiplash Protection System (WHIPS).

#### Recreating reality into its smallest details

Advanced crash simulations are an important means to make realistic crash tests of separate components and interior safety systems. Our crash sleigh can recreate the exact movement the car makes the moment of collision, which is unique in the car world. This tipping affects the way occupants are restrained and can normally only be analysed through expensive full-scale crash tests.

#### Virtual crash tests

Super-computers make it possible for us to recreate and analyse different crash situations six times a day without crashing real cars. We have the technology to test new cars virtually even before they exist as prototypes and we can incorporate extremely detailed virtual crash test dummies—we've even developed the world's first pregnant crash test dummy. This makes full-scale testing very effective and enables us to focus our resources where they are most useful.

⊕ This is living it.



Sweden. Other car manufacturers come here for final car testing under harsh and capricious conditions. For us it's home. This is where we live and drive, 365 days a year. So no wonder Volvos are in a category of their own when it comes to active safety. Take, for example, our own proving ground Hållered with its 34 miles of test tracks—including different road types from all over the world. This is the top secret facility

where we scrutinize our cars' ability to support their driver in all imaginable (and unimaginable) situations. On tracks aimed to reveal any weak spots, we expose all new Volvo models to extreme forces and conditions during hundred thousands of miles. Not to mention the distances driven on ordinary Swedish roads. Here's where innovation confronts reality. Here's also where we evaluate the interaction between the car

and the driver. Because the most important safety feature in a Volvo is the driver. And the more efficiently the car's onboard systems support you as driver, the safer things are for you and your passengers.



#### NEW TECHNOLOGY FOR A NEW DRIVING EXPERIENCE.

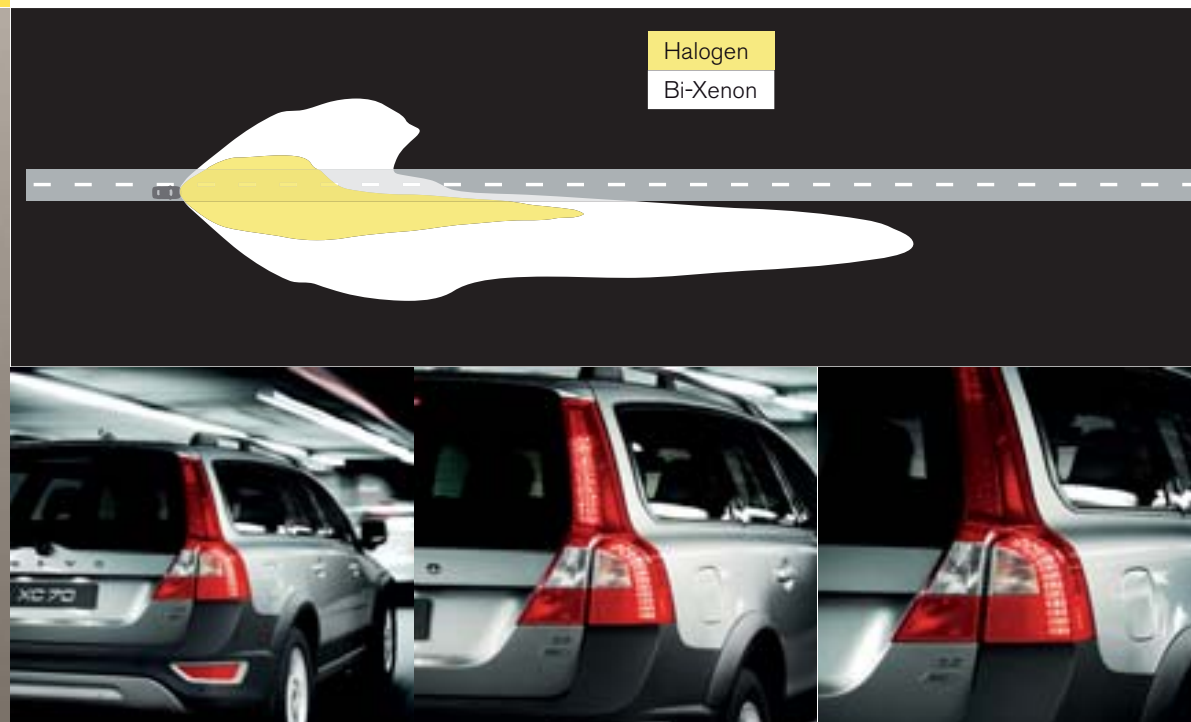
Ultimately, no car is safer than its driver. So we loaded your Volvo XC70 with state-of-the-art technology to support and help you make the right decisions. Inspired by technology normally found in fighter aircraft, systems like Volvo's Intelligent Driver Information System (IDIS) senses your workload and will withhold incoming phone calls and other peripheral information in stressful situations. To further help assist you, there's the option of the



radar based Adaptive Cruise Control with Collision Warning and Brake Support. Apart from enhancing driving comfort, this can be useful to help you maintain the distance from the car in front of you. Collision Warning uses the same radar sensor to help you avoid or reduce the effect of a rear-end collision. Still, technology will never take the responsibility away from you as driver. The final decision is always in your hands. But if these technologies help make you more alert and relaxed as driver, they will also contribute to your overall safety and well-being in your Volvo.

#### Double your illumination—twice

Designed in a country characterised by cold and darkness for several months a year, the headlamps in a Volvo XC70 combine separate reflectors to provide even and effective illumination in all conditions. For even better night vision, there's the option of Bi-Xenon gas discharge lamps. Compared to conventional halogen headlamps, Bi-Xenon headlights expand your vision range with about 230%. Driving at 60 mph, this means you'll be able to see 150 ft farther. Independent of the load, these headlights self-adjust to maintain the correct angle to the road—even during hard acceleration or braking.



#### Hydraulic Brake Assist (HBA)

Helping the driver stop the car in the shortest possible distance, HBA employs a combination of vacuum and hydraulics. This ensures that the optimal braking power is always available when it's needed. Additionally, the hydraulic power maintains brake pressure even through prolonged brake usage.

#### Ready Alert Brakes (RAB)

Reducing the braking distance further, RAB uses information such as the sudden release of the accelerator or the Adaptive Cruise Control to anticipate an emergency braking. It moves the brake pads closer to the discs to speed brake response.

#### Emergency Brake Light (EBL)

Beyond the immediate response of the car's brake lights, EBL warns other road users about your emergency braking status. When the car's deceleration exceeds 0.7g or when the anti-locking brakes are activated, the brake lights start flashing.

# ⊕ Designed for life.



IN A FRONTAL COLLISION the patented frontal structure with its sizeable deformation zones in different kinds of steel will yield to help absorb crash energy. In developing the Volvo XC70's protective qualities, we have focused on frontal collisions at both higher speeds and with heavier vehicles. The compact power train is designed to help optimise deformation—all main components in the engine bay have their own predetermined positions to help keep components outside the cabin. A steel strut under the dashboard helps prevent components in the engine bay from intruding into the cabin. This also helps protect legs and feet.

The unique geometry of the frontal structure and longitudinal steel struts in the doors helps disperse crash energy away from the front to the rear of the car, further helping to reduce the strain on the occupants.

Inside the car, occupant protection is increased by optimising the functions of all safety restraint systems. The safety belts with pre-tensioners on all seats and force limiters on the front seats interact with other safety features—such as the deformable steering column and dual-stage adaptive airbags—to help keep the occupants out of harm's way.

The interior is designed to help absorb as much crash energy as possible. The ignition switch, for example, is positioned on the dashboard away from the driver's knees.

When we designed the Volvo XC70, we also considered the safety of other road users. To help protect the occupants in an oncoming car with lower positioned bumpers, the Volvo XC70 features a low cross member integrated in the front structure. In an impact, this cross member is designed to help activate the other car's own crumple zones and other safety systems to help reduce the risk of injury.



"To me, safety is beautiful. Every detail in a Volvo—from the interior ergonomics and the fantastic seats, to the body's powerful shoulders and softly rounded front—are there for safety reasons. This is functionality that goes hand in hand with distinctive design, and it sure looks good."

Steve Mattin, Design Director, Volvo Car Corporation

It is the interaction between the different safety systems that determines how safe a car is. Not the number of safety features itself. First, the driver must have the right conditions for well-being behind the wheel. Seats, instruments, controls, visibility, lighting—all contributes to safety when they interact to support the driver. Then there's how the car behaves on the road. The way the chassis interacts with brakes, steering and different

stability enhancing systems not only determines how fun the car is to drive—this is also crucial to help the driver maintain control in challenging situations. Finally, if an accident can't be avoided, you and your passengers are surrounded by a wealth of interacting protective systems. Hopefully you'll never have to experience them in action. But it can be reassuring to know they're there to help protect you.



**IN A ROLL-OVER** the extremely sturdy safety cage will help protect the occupants while the safety belts help keep them restrained in their seats. If the car first has been hit from the side, the Inflatable Curtain (IC) is activated to help protect the heads of the outboard occupants and help keep them inside the car. The IC remains inflated for several seconds to help provide extended protection, regardless of whether the windows are up or down. The energy-absorbing interior also adds to occupant protection. Additionally, the roof structure is reinforced to help keep the passenger compartment intact.



**IN A REAR IMPACT** the rear deformation zones will help absorb as much of the crash energy as possible before it reaches the cabin. Similar to the front, the rear safety structure features an optimised mix of different grades of steel to provide strength and carefully controlled deformation. The fuel tank is designed to remain well protected in front of the rear axle. Even the exhaust system and spare wheel are designed to have no effect on the energy absorption.

Inside the cabin, the head restraints not only help protect the neck and spine, but also help protect the head from shattering glass. Integrated in the front seats, Volvo's unique Whiplash Protection System (WHIPS) cradles the spine and neck in a controlled manner. The system is activated by a collision of sufficient force from behind. Independent research has shown that WHIPS is one of the most effective in the world. Since its introduction in 1998, it has helped reduce long-term consequences by more than 50%.

**IN A SIDE IMPACT** the distance between your chest and the colliding car is about 1 foot. So how can we best use this distance to help protect life? To provide strength and carefully controlled deformation in a side impact, the door and side structure of the Volvo XC70 are built with ultra high strength steel and softer grades of steel. For example, the unique one-piece hydro-formed side structure is extremely strong to help withstand a severe side impact—even with a larger vehicle such as an SUV. And in the front seats, you'll find strong, rigid side-impact tubes. These transfer the loads from the side of the car into the centre of the car, where a steel box is deformed. The dual-chamber side airbags in the front seats help protect the occupants chest and hip—the hip chamber inflates with five times higher pressure than the chest chamber to help absorb maximum impact where the body is most fragile. The Inflatable Curtain (IC) adds protection for the head and helps keep the occupants inside the car, both in the front and the rear. The IC also extends 60mm longer to help provide better protection.

# Environmental care. Part of our commitment to safety and your well-being.

At Volvo, the well-being of people is at the core of every decision we make. And just like safety, we believe that environmental care requires a holistic approach from the very start. For this reason, Volvos are built in some of the cleanest automotive plants in the world.

## **Air quality control**

A cabin filter helps to prevent dust and pollen from entering the car through its ventilation system.

## **Testing materials for harmful substances**

To make life more comfortable for people with allergies or asthma, upholsteries and interior textiles comply with the Oeko-Tex Standard 100—an international benchmark ensuring that textiles and leathers are tested for certain allergy inducing or harmful substances. All interior metal details are tested with regard to contact allergies—so parts such as keys, door handles and seat belt buckles comply with the same standards for nickel leakage as high quality jewelry.

## **Fuel efficiency**

To increase fuel efficiency and reduce carbon dioxide emissions, all Volvo engines have advanced electronic management systems and low internal friction. Other factors that contribute to fuel economy include efficient transmission systems, aerodynamic body design, the use of various grades of steel to minimize body weight, and a trip computer displaying current and average fuel consumption.

## **Emission control**

Volvo engines meet stringent international emission requirements. Advanced emission control technology eliminates between 95 and 99% of the carbon monoxide, hydrocarbons and nitrogen oxides in exhaust fumes. The emission control system is designed to provide full effect as rapidly as possible after a cold start—when emissions are at their highest. Right down to the fuel filler door, the fuel system is designed to reduce emissions through evaporation when the car is moving or at a standstill.

## **Clean all its life**

Every Volvo begins its relationship with the environment at the earliest stage of its design. Volvos are built in some of the cleanest automotive plants in the world. What's more, our Environmental Product Information (EPI) allows you to choose a Volvo model on the basis of its overall environmental performance.

To choose a Volvo model on the basis of its overall environmental performance, see our Environmental Product Information (EPI) guide at [www.volvocars.com/EPI](http://www.volvocars.com/EPI)

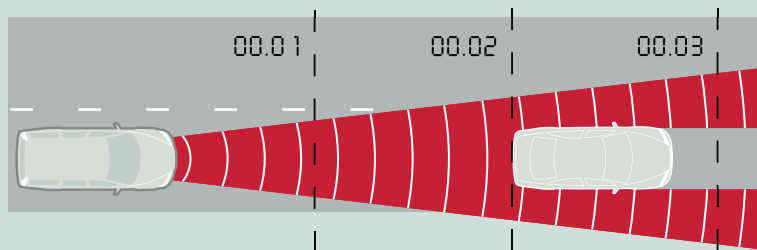




# Factory-installed options.

The sense of quality and care—and knowing that you get the Volvo that suits your lifestyle. Customize your car with the options that best meet your demands and desires, and you'll soon be behind the wheel of your individually tailored Volvo XC70.

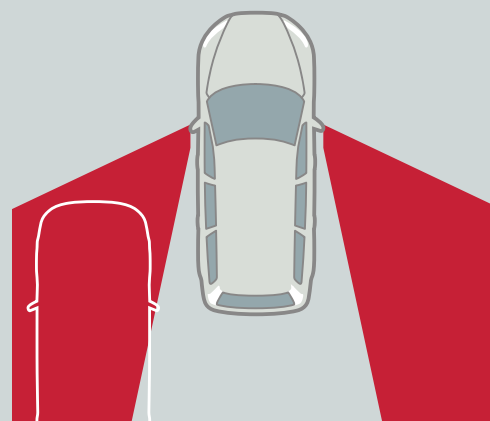
1



3



2



4



1

## Adaptive Cruise Control (ACC)

ACC is designed for smooth traffic flow. You just select the desired speed and the minimum time gap to the vehicle in front of you. When the radar sensor detects a slower vehicle in front of you, the speed automatically adapts to that vehicle.

2

## Blind Spot Information System (BLIS)

BLIS uses rear-facing cameras installed in the door mirrors to keep a lookout on either side of the car. As a vehicle enters your blind spot, the system alerts you with a lamp built in to the front door post—left or right. Together with the door mirrors, this helps you assess the feasibility of a lane change. BLIS is activated once the car exceeds 6 mph, and reacts to almost any type of vehicle from a motorcycle upwards, day or night.

3

## Personal Car Communicator (PCC)

This convenience combines keyless drive with an inter-active communication device that fits in the palm of your hand. Keep the PCC with you and the car unlocks automatically on your arrival. Start the engine by pressing a button on the dash. Lock the car by pressing a button in the door handle. Later in the day, if you're wondering whether you've locked the car, the PCC can remind you. On your return to the Volvo XC70—within a radius of 65-110 yards—the PCC can provide a current report on its status. Press the information button; a green light means it's locked, a yellow light means it's unlocked, a red light means the alarm has been triggered. If the red light is flashing, then somebody is in your car. In this case, thanks to the onboard heartbeat sensor, you've got advanced warning and an opportunity to evaluate the situation safely.

4

## Rear Seat Entertainment (RSE)

With the dual screen RSE, two rear seat passengers can play a game or watch a film—independently or together. The system includes two 7-inch wide-screen displays integrated in the front seat head restraints and at the back of the central armrest there's a multi-functional DVD console with separate headphone inputs and an AUX input for game consoles and such.



# Accessories.

Volvo's accessories help you make your Volvo XC70 even more suited to your personal needs. They are the only ones that have been tested to meet Volvo's exacting safety, quality and environmental requirements. You can also rest assured they're a perfect match to the technology and design of your Volvo.



## FOR DRIVING FREEDOM

Park assist, front and rear  
Parking assistance camera  
Volvo Hands free with Bluetooth  
Moon roof wind deflector

## FOR YOUR ENTERTAINMENT

Volvo iPod Aux Adapter  
Volvo USB / iPod music Interface  
Satellite Radio  
Rear Seat Entertainment System  
with Dual DVD player  
6 Disc in dash CD changer

## FOR PRECIOUS CARGO

Sun screen, rear doors  
Sun screen, Cargo area  
Rear center armrest table  
Padded neck cushion  
Booster cushion and backrest  
Child Activity Bag  
Child Mirror

## FOR YOUR LEISURE

Trailer Hitch, 2" Square profile  
Trailer hitch step  
Trailer hitch mounted bike carrier  
Trailer hitch mounted load basket  
Trailer hitch mounted ski carrier  
Trailer mirrors

Roof Mounted "Load Bar" carrying system  
Ski Carriers, roof mounted  
Snowboard carrier, roof mounted  
Canoe/Kayak carrier, roof mounted  
Surfboard carrier, roof mounted  
Bike carrier, roof mounted  
Load basket, roof mounted  
Cargo box, roof mounted  
Portable Electric cooler / hotbox  
Integrated cooler/ hotbox  
Luggage compartment mats  
Grocery bag holders  
Net pocket, side panel cargo compartment  
Net, Luggage Compartment floor

Dirt cover, rear bumper  
Business bag organizer  
Floor mats, rubber  
Tunnel mat, second row seats  
Sun Glasses holder  
Ashtray, front and rear  
Seat cushions , Rear cargo area  
Rear seat guard  
Protective grille steel  
Cargo management system

## FOR YOUR LOOKS

Wood steering wheel  
Interior décor panel kits  
Footboard, moldings, illuminated  
License plate frames

Valve stem caps  
Aluminum Wheels  
Chrome Wheels  
Locking Lug nuts  
Roof Spoiler

## FOR UNEXPECTED SITUATIONS

Mud Flaps, front and rear  
Electric engine heater  
Leather care kit  
Jumper cables  
Warning triangle  
First aid kit  
Snow chains  
Car cover

## Interior selection.



Leather Offblack upholstery, Anthracite Black interior (F100)  
Classic wood trim center stack and door panel inserts



Sundby Textile/T-Tec Offblack upholstery, Anthracite Black interior (F500)  
Dark fineline trim center stack and door panel inserts



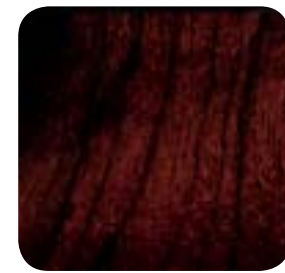
Leather-clad steering wheel,  
Charcoal



Leather-clad steering wheel,  
Soft Beige



Dark Fineline trim



Classic wood trim



There are two different interior colour themes to choose from—Anthracite Black and Sandstone Beige. The dashboard and other interior details are colour coordinated with the upholstery. For extra contrast, the Sandstone Beige interior offers brown upholstery options. The front centre armrest and interior door panels are colour coordinated with the seats and upholstered in matching material.



Leather Soft Beige upholstery, Sandstone Beige interior (F112)  
Classic wood trim center stack and door panel inserts



Sundby Textile/T-Tec Mocca Brown upholstery, Sandstone Beige interior (F514)  
Dark fineline trim center stack and door panel inserts



Leather-clad gear knob  
Charcoal, Geartronic



Leather/Classic wood gear knob  
Charcoal, Geartronic



Leather-clad gear knob  
Soft Beige, Geartronic



Leather/Classic wood gear knob  
Soft Beige, Geartronic

Exterior design.







**Aluminium crossbars\***

An aerodynamic design element that complements the roof rails and the Volvo XC70 design. These aluminium crossbars also allow you to exploit the roof's load-carrying capacity to the full.

**Roof spoiler\***

This colour-coordinated roof spoiler adds a confident dash of style. Its kinetic design enhances the sense of motion even at rest.

\*Retailer installed accessory



Cecino 7x16"  
Silver Stone  
Standard



Sargas 7.5x17"  
Silver Bright  
Optional

# Standard features.

SAFETY	XC70
ABS Anitlock Brakes with EBA	●
Anti-submarine seats	●
Cargo security cover	●
Daytime running lights (halogen semi-sealed with replaceable bulb)	●
Driver and front passenger supplemental restraint system—dual-threshold air bags	●
Dynamic Stability and Traction Control (DSTC)	●
Electric Parking Brake	●
Hill Decent Control	●
IDIS Intelligent Driver Information System	●
Illuminated side marker lights/turn signal indicators	●
Immobilizer, encrypted ignition key	●
Inflatable side curtain (IC)	●
ISOFIX baby/child seat attachment system	●
Overhead-mounted seat belt reminder lights	●
Rear fog light with auto-off	●
Safe approach and home safe lighting	●
Seat belts: five, 3-point inertia-reel belts with automatic pretensioners; front belts have height adjustment	●
Security system	●
Side impact air bags for driver and front passenger (SIPS bags II™)	●
Side impact protection system (SIPS)	●
Top-tether child seat anchorage capability	●
Tire Pressure Monitoring System (TPMS)	●
Whiplash protection seating system (WHIPS)	●
INTERIOR	
Auto Dimming Rearview Mirror	●
Central power door locks with remote control, tailgate and fuel filler door locks	●
Cruise control	●
Cup holders	●
Dual-zone electronic climate control (ECC)	●
Five padded head restraints	●
Four reading lights	●
Front 12-volt power outlet	P
Front center armrest	●
Front door-panel storage pockets	●
Front seat-back storage pockets	●
High Performance Audio System	●
Illuminated lockable glove compartment	●
Illuminated vanity mirrors in driver/front passenger sun visors	●
Interior cabin light delay	●
Leather-clad steering wheel	●
Leather-clad gear lever knob	●
Luggage/cargo area lights	●
Outside temperature gauge	●
Pollen filter	○
Power-adjustable driver seat, 8-way with 3-position memory and lumbar support	●
Power windows with driver and passenger auto up/down with anti-trap feature	●

Rear seat ventilation outlets on B-pillar	●
Rear window defroster with automatic timer	●
Tilt/telescopic steering wheel with illuminated cruise and audio controls	●
Two entry lights (in front door foot wells)	●
XC Seat and door panel stitching	●
XC Floor and cargo mats	●
40/20/40 split-folding rear seat	●
EXTERIOR	
Front and rear skid plates	●
Front fog lights	●
Power-adjustable heated exterior rearview mirrors	●
XC Body trim	●
XC Grille	●
XC Roof rails	●
16" Cecino alloy wheels	●

● = Standard    ○ = Option    P = Package

# Factory options.

	XC70
Metallic paint	○
Adaptive cruise controler with collision warning and brake support	○
BLIS (Blind Spot Information System)	○
17" Sargass alloy wheels	○
Dual outboard two-stage child booster seats and power child locks	○
PCC (Personal Car Communicator)	○
Satellite radio prep	○
Volvo dual-screen RSE (Rear seat Entertainment)	○
VNS (Volvo Navigation System)	○

○ = Option





## Packages.

### CLIMATE PACKAGE

In a Volvo you're always prepared to deal with the ever-changing forces of nature. And to increase comfort when driving in cold, rain or snow—simply add the Climate Package.

- Heated front seats
- Heated rear seats
- Heated windshield washer nozzles
- Headlight washers
- Rain sensor

### CONVENIENCE PACKAGE

The wide range of considerate and practical features makes life with your Volvo a truly enjoyable experience. And by adding the Convenience Package, you expand your freedom even more.

- Grocery bag holder, cargo area
- Holder for sunglasses
- Humidity sensor for ECC System
- IAQA (Interior Air Quality System)
- Tinted rear windows
- Park assist, front and rear
- Power operated tailgate
- Private locking
- 12 volt outlet, cargo area

### PREMIUM PACKAGE

A Volvo offers you long, relaxed drives and more spirit in your daily life. The Premium Package will provide you with some necessities for that extra ambience and convenience.

- Audio dimming mirror with compass
- Classic wood inlays
- Homelink™
- Leather clad gearlever knob with classic wood inlay
- Leather seating surfaces
- Power glass moonroof
- Power passenger seat

### DYNAUDIO PREMIUM SOUND SYSTEM

This is our ~~top-of-the~~ line audio system designed for dynamic clarity with the entire sound spectrum. This system features twelve loud-speakers by Danish sound specialist Dynaudio. In addition, Dolby® Pro Logic® II Surround helps tailor a well-balanced audio experience for each occupant.

- In-dash 6-CD changer
- SIRIUS Satellite Radio
- 5x130 W digital class D amplifier
- Dolby® Pro Logic® II Surround
- 12 Premium Sound loudspeakers by Dynaudio
- MP3 and WMA compatible CD player
- AUX input

# The all-new Volvo XC70 specifications.

## ENGINE

### Six-cylinder in-line all-aluminium engine.

Double overhead cam-shafts, 24 valves with Variable Valve Timing (VCT). The 3.2 engine also features Variable Intake System (VIS) and Cam Profile Shifting (CPS) on the intake camshaft. Electronic engine management system. Three-way catalytic converter with Lambda sensor.

This highly compact all-new in-line six-cylinder engine meets high expectations within performance, comfort and environmental care. The smooth running and responsive engine character provides a relaxed drive at all speeds. Advanced engine technology, such as a new intake system, helps increase torque over a wide speed range and ensures power at high revs. And depending on your driving style and the situation, the intake valve train automatically switches between economy and performance modes to optimise efficiency. The engine's compact design aids safety performance in a frontal collision. The latest generation of fast response emission control technology ensures that the engine complies with stringent environmental standards such as California's ULEV II.

### Volvo XC70 3.2 AWD (235 hp)

Engine type: 3.2-liter in-line six-cylinder petrol engine

Max power output: 235 hp at 6200 rpm

Max torque: 236 ft./lbs. at 3200 rpm

Acceleration: 0-60 mph N/A

Top speed: N/A

Fuel consumption, MPG, mixed cycle: N/A

Environmental classification: Euro 4 (2005)

Transmission: Six-speed Geartronic automatic

## DRIVELINE

Electronically controlled all-wheel drive (AWD) with Instant Traction™. A six-speed Geartronic automatic (allowing manual shifting). Power is continuously distributed to all four wheels by Volvo's pre-charged electronically controlled AWD with Instant Traction™. This minimizes wheel spin for immediate acceleration and reassuring stability in all conditions. The six-speed Geartronic—a responsive automatic that's ideal for relaxed driving, tough conditions or towing. This also allows manual gear shifting so you can maintain a lower gear to bring up the revs, or for the added assistance of engine braking. A special winter setting makes it easier to move off and maintain grip on slippery surfaces. The standard Hill Descent Control (HDC) offers a smooth and controlled hill descent on steep, rough roads using the brake system to control each wheel's speed.

## CHASSIS

Front suspension with spring struts (McPherson), anti-dive and anti-lift function. Active multi-link independent rear suspension. Anti-roll bars front and rear. DSTC (Dynamic Stability and Traction Control).

The Volvo XC70's all-road capability is based on generous ground clearance 8.2 inches, a low center of gravity and an advanced chassis. The rigid body promotes optimal suspension function and well-balanced handling with a high level of comfort. The front and rear suspensions also interact to provide smooth braking and steering. The DSTC stability system provides assistance if either of the drive wheels begins to lose traction or if a skid is imminent.

## STEERING

Power-assisted hydraulic rack and pinion steering. Tilt and telescopic steering wheel column. 2.8 turns lock to lock.

Behind the wheel, you can enjoy steering that's both responsive and reassuring at all speeds. The optional speed dependent power steering gives progressively less servo assistance the faster you drive. Higher steering precision and enhanced road feedback are easily enjoyed benefits. At lower speeds, added power assistance makes the car even easier to manoeuvre, for instance when parking.

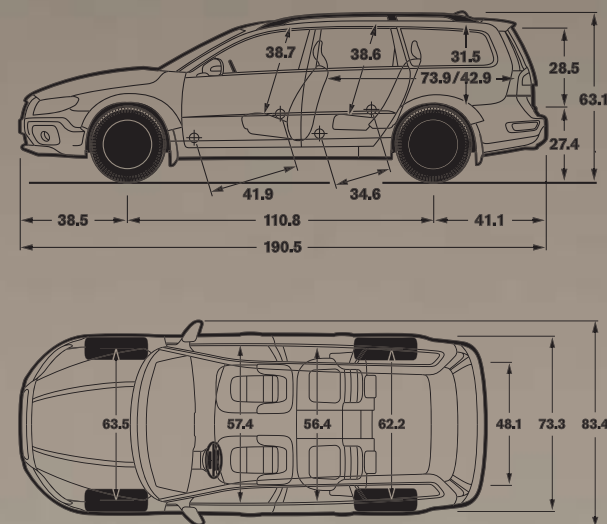
## BRAKES

Power-assisted anti-locking disc brakes (ABS), ventilated discs front. OHB (Optimized Hydraulic Brakes). HBA (Hydraulic Brake Assist). RAB (Ready Alert Brakes). FBS (Fading Brake Support). EBD (Electronic Brake Distribution) between the front and rear brakes. Diagonal-split braking system. Power Parking Brake (PPB).

Generously dimensioned anti-locking disc brakes and optimized hydraulics help to ensure a short stopping distance in all situations. Furthermore, they withstand tough use without fading. HBA helps you use your brakes to the full in an emergency situation, while RAB anticipates severe braking and prepares for it by moving the brake pads closer to the discs. FBS automatically compensates for the higher pedal forces required after long periods of heavy braking. EBD distributes the braking effect between the front and rear wheels to achieve optimal results according to load and driving conditions. The Power Parking Brake (PPB) makes moving off from steep gradients easier. Once depressed, the PPB control lever automatically releases as the car pulls away. It can even be set to engage automatically as you extract the key.

## Fuel tank

18.5 US Gallons





Meet the family.

To live life is to  
care about it.

S



**The new Volvo S40** The compact and energetic sedan.



**Volvo S60** The sports sedan worth getting passionate about.



**Volvo S80** The premier sedan, meticulously engineered for superior driving comfort.

V



**The new Volvo V50** The Sportswagon—flexible, compact and full of zest.



**The all-new Volvo V70** The genuine family wagon—highly competitive yet comfortably versatile.

XC



**The all-new Volvo XC70** The rugged yet stylish all-roader.



**Volvo XC90** The versatile SUV that takes you anywhere with grace.

C



**The new Volvo C30** The compact and charismatic SportsCoupe.



**Volvo C70** A convertible when you want it.



**Volvo C70** A coupe when you need it to be.

Every moment in a Volvo is a moment designed to celebrate life. A life full of twists and turns, ups and downs; the little things as well as the big ones. Of course, to live life to its fullest isn't just about you caring for others is important as well.

For almost eighty years we have helped save lives on roads around the world. Nevertheless, when it comes to improving automotive safety, we will never be satisfied. And while we're seeking new solutions, our existing safety systems are preventing many accidents from happening and providing some real protection when they do.

Our passion for life means looking after our children's children, too. Which is why we try to balance the needs of our company with those of society. With this bigger picture in mind, we develop engines and technology that have less impact on mother earth. This approach also explains why we pay so much attention to your immediate environment—in the car. Simply put, we care about you—and the whole circle of life.

# Taking care of your ownership needs.

It's a simple idea; one point of contact for all your car ownership needs, whether it's finding the right financing or who to contact in an emergency.

Get the most out of owning your Volvo.

## **Volvo Car Finance North America**

If you purchase or lease your Volvo through Volvo Car Finance North America, you can take advantage of services designed to make financing simple and convenient. Quick Debit, for instance, enables you to have your monthly payment automatically debited from a designated bank account. For more information, call 1-800-770-8234 or visit [www.volvofinance.com](http://www.volvofinance.com)

## **On Call roadside assistance**

Whenever you need us, we're just a phone call away. Our nationwide network of retailers and authorized service providers are ready to assist. Whether you require roadside assistance or maps and routing information for your next trip, refer to your On Call Card and dial 1-800-63-VOLVO—anytime, day or night. Your complimentary four-year membership activates the moment you become a Volvo owner.

## **Volvo new car warranty**

Your new car warranty provides comprehensive coverage for four years or 50,000 miles, whichever occurs first. Additional warranties cover corrosion, seat belts, the supplemental restraint system, emission systems, genuine Volvo replacement parts and genuine Volvo accessories. Should you encounter any problem with your Volvo, simply contact the nearest retailer for assistance. Where your warranty ends, Volvo Increased Protection (VIP) plans begin. To purchase the additional protection of a VIP plan, contact your local retailer.

## **Volvo genuine service**

The best way to ensure superior performance year after year is to bring your Volvo to your authorized retailer for regular maintenance. Our service advisors and factory-trained technicians are uniquely qualified to maintain your automobile. With the aid of advanced Volvo diagnostics, they follow all prescribed factory maintenance outlined in your service interval manual. Genuine Volvo Service is our ongoing commitment to you: to keep your Volvo performing smoothly long after other cars have given up.

## **Volvo mobility program**

The goal of the Volvo Mobility Program is to assist persons with physical disabilities or hearing impairment achieve independence. For those with exceptional transportation needs, freedom can be facilitated within the extraordinary comfort and safety of a specially adapted Volvo. For additional information on this program, please contact the Volvo Mobility Program Headquarters at (800) 803-5222 or visit [www.volvocars.us/mobility](http://www.volvocars.us/mobility). TTY users are invited to call 1-800-833-0312.

## **Personal shopper**

The Volvo Personal Shopper is dedicated to providing you with a whole new level of shopping convenience. Whether you'd like help identifying the Volvo model that best fits your lifestyle, detailed information on any Volvo model, or a comparison against the competition, Volvo is there to help. We can arrange a Guest Drive for you at your nearest Volvo Retailer. So make the most of your shopping time and call the Volvo Personal Shopper at 1-800-550-5658. (U.S. only)

# Volvo Overseas Delivery.

Volvo Overseas Delivery offers a unique way to buy your new custom-built car as well as a unique way to see more of Europe. And when you're done traveling, bring the pleasure of driving a Volvo back home. Purchase any new Volvo as part of the Volvo Overseas Delivery Program and enjoy all this—and more:

- Attractive pricing on US models.
- Two complimentary round-trip tickets with Scandinavian Airlines.
- One free hotel night in Gothenburg, Sweden, the home of Volvo.
- An exciting Volvo Factory Tour or a visit to the new Volvo Brand Experience Center.
- An exclusive VIP delivery experience at the Volvo Factory Delivery Center.

- The opportunity to explore Europe in the comfort and safety of your own Volvo, either with one of our spectacular tours or on your own.
- Extensive complimentary home shipment services. Just leave your car with us. We'll ship it to you the convenient way while you relax and enjoy your complimentary flight back home.

Can you think of a better way of traveling overseas and making your souvenir part of an unforgettable experience?

If you would like to know more, contact your local Volvo retailer, our Customer Care Center (800) 631-1667, or visit [www.volvocars.us/mybagsarepacked](http://www.volvocars.us/mybagsarepacked)



# A world of colors.



614 Ice White



477 Electric Silver metallic\*



454 Ruby Red metallic\*



484 Seashell metallic\*



471 Willow Green metallic\*



019 Black Stone



472 Oyster Grey metallic\*



466 Barents Blue metallic\*

\* Metallic paint is an option.

**Please note:** It is not possible to reproduce exact original shades in this brochure. Ask your Volvo retailer to show you samples. As part of our commitment to the environment, the paper used in this brochure is recycled, and color choices were printed directly on the page. This eliminates the need for chemically treated color chips. A small thing perhaps, but then, every little bit helps.

Volvo. for life



**WWW.VOLVOCARS.US**

Specifications, features, and equipment shown in this catalog are based upon the latest information available at the time of publication. Volvo Cars of North America, LLC reserves the right to make changes at any time, without notice, to colors, specifications, accessories, materials, and models. For additional information, please contact your authorized Volvo retailer. © 2007 Volvo Cars of North America, LLC. Printed in USA on 100% recyclable paper. **MY08F**