

S-TYPE



S-TYPE. Beautiful, distinctive styling. Pages 4 - 7



Interior craftsmanship and contemporary design. Pages 18 - 25



Technology, performance and control. Pages 8 - 15



Safety and passenger protection. Pages 16 - 17



Standard features, choices and technical specifications. Pages 26 - 35



The JAGUAR ownership experience. Pages 36 - 37





AHO 811

Flowing Lines



JAGUAR'S S-TYPE is beautiful for a reason, its flowing lines and sleek shape engineered as much to please the eye as to cut cleanly and efficiently through the air.

Now S-TYPE is even more distinguished. The look more purposeful, more individual. A passion for quality and build culminates in a luxury sporting car of thoughtful automotive technology, while the interior is a place of luxury and calm.

S-TYPE is a testament to JAGUAR'S innovative engineering pedigree, proving that the exciting choice can also be the rational one. Inside the welcoming cabin are unique JAGUAR details: fine leather, polished wood and chrome, quality upholstery or contemporary aluminium, for a car that makes no compromises, delivering power with agility, grace with elegance. S-TYPE is the car for the individual - make it the car for you.





R

The S-TYPE R is the most powerful S-TYPE, its high performance 4.2 LITRE V8 SUPERCHARGED ENGINE delivering 395PS putting you in command, *just when you want it*, of effortless power.

Instantly recognisable, the S-TYPE R's extraordinary abilities are reflected in its distinctive looks, subtle rear boot lid spoiler and eye-catching 19 inch Barcelona Alloy wheels as standard - all clues to the dynamic capabilities at your fingertips.

The exhilarating engine and precision handling inspires total confidence and enhances control. S-TYPE R features Dynamic Stability Control (DSC) for sure-footed cornering, Computer Active Technology Suspension (CATS), Electronic Park Brake and JAGUAR'S Adaptive Restraint Technology System (A.R.T.S.).

S-TYPE R's individuality extends to the contemporary interior with dedicated S-TYPE R upholstery and special finishes including R gear knob and steering wheel - which can be explored in comprehensive detail at jaguar.com.



The advanced design of S-TYPE's twin turbocharged 2.7 LITRE V6 DIESEL brings together the latest lightweight engine materials and JAGUAR'S consistent approach to advancement in engine technology.

Constructed using Compacted Graphite Iron, this allows the engine, with 207PS and 435NM of torque, to be lighter as well as stronger, for greater acceleration and performance, enhanced by the faster responding twin turbochargers.

The result is not just smooth delivery of power and an instant surge of controlled acceleration, but improved fuel economy and lower emissions.

The innovative use of dual-isolated engine mounts to soften the engine's huge torque, adds to the refinement, further enhanced by the 6-speed ZF electronic automatic transmission.







The refinement and excitement of the s-TYPE mirror a distinctive balance of real world performance and confidence-inspiring dynamic abilities.

The distinguished-looking s-TYPE features technology that is relevant and accessible, alongside outstanding levels of quality, build and reliability.

The comprehensive s-TYPE range has the right individual choice for you, intuitively engineered. There are four engines to choose from: the torque of the 2.7 LITRE TWIN TURBOCHARGED V6 207ps DIESEL; the refinement of the 238ps 3.0 LITRE V6 and 298ps 4.2 LITRE V8 PETROL ENGINES, and of course the s-TYPE R's 4.2 LITRE V8 SUPERCHARGED ENGINE delivering 395ps.

Engineered and built using the very latest in lightweight metals, four valves per cylinder, four overhead camshafts with continuously variable cam phasing, sporting performance is a given, but so too are competitive emissions and economy, and JAGUAR'S dedication to relevant design, and engineering pedigree.

All s-TYPE V6 and V8 petrol models come with JAGUAR'S acclaimed 6-speed ZF electronic automatic transmission.



S-TYPE

118 VVY



Intelligent, *yet unobtrusive* driver control technology



is at the heart of the S-TYPE driving experience.

Intuitive and simple to use, JAGUAR technology brings you effortless motoring, with thoughtful features such as Dynamic Stability Control (DSC) - standard on all models - which is designed to engage the anti-lock braking and traction control systems to ensure constant control.

On the S-TYPE R, Computer Active Technology Suspension (CATS) continuously monitors driving style and road surface, fine-tuning the adaptive shock absorbers for maximum comfort and handling.

Optional Adaptive Cruise Control (ACC) with audible forward alert - available on all models with automatic transmission - uses microwave radar to scan the road 600 times a minute - 10 times a second - helping manage your speed and assist with keeping your distance from the vehicle in front.

Variable ratio Power Assisted Steering offers a speed-attuned response that gives less input at speed for stable motorway driving, but then gives more input at slower speeds and in town to make parking and traffic manoeuvres even easier.

Beautiful, as well as progressive, all S-TYPE models feature as standard DSC, Cruise Control and Rear Park Distance Control. Also standard is the Electronic Parking Brake (EPB) which helps make stopping, parking, and pulling away, more straightforward and is designed to engage automatically when you take out the ignition key, and then release when you engage gear.

Optional rain sensing wipers reflect JAGUAR's commitment to intuitive engineering.

Added optional convenience features such as advanced Satellite Navigation system with Touch screen controls, wireless Bluetooth® Telephone Connectivity and JaguarVoice® spoken command system. These can all be viewed at jaguar.com.

Interior theme: S-TYPE High Luxury Pack, Ivory and Mocha with Burr Walnut veneer



In a challenging world, S-TYPE is a reassuring place to be, a haven made possible through the innovative technology that underlies JAGUAR'S single-minded approach to safety.

JAGUAR was the first to introduce the Adaptive Restraint Technology System - (A.R.T.S.). Updating every 50 milliseconds - just one fifth of the time it takes to blink - ultrasonic sensors are designed to detect the size of those in the front seats, and how they are seated, tailoring airbag deployment most effectively to help protect the occupants.

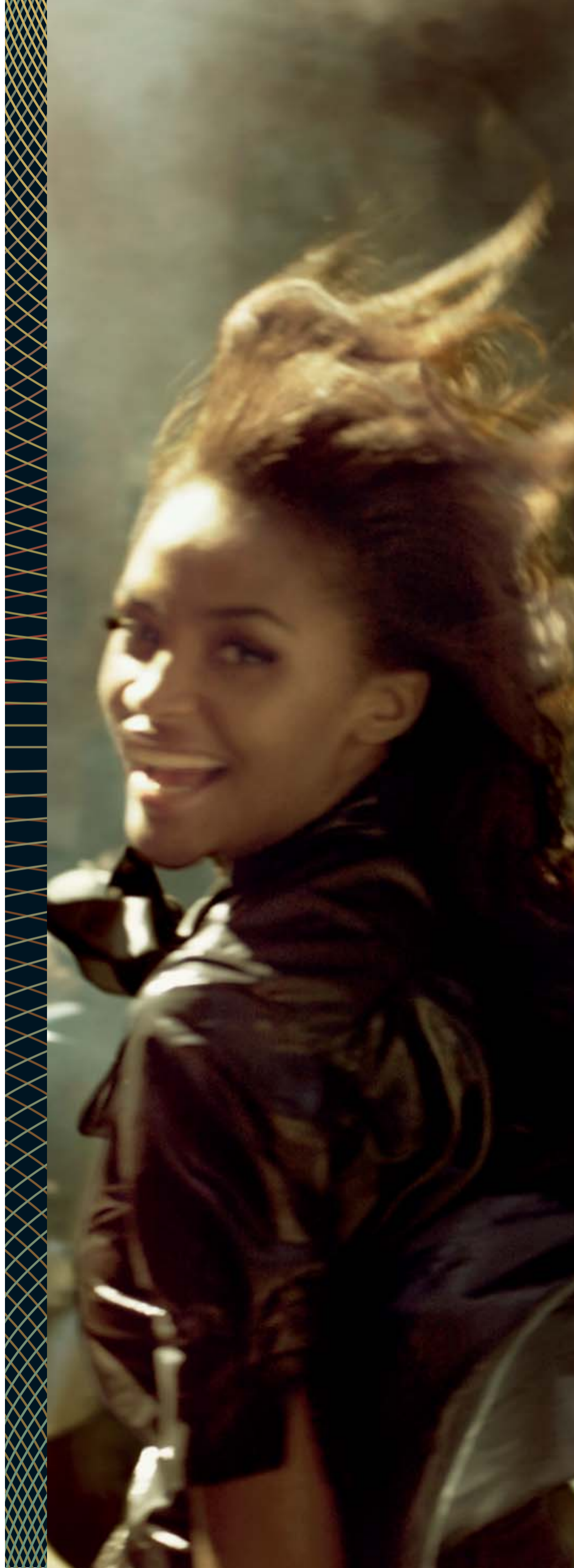
As well as the rigid, impact-resistant occupant safety cell, there are crumple zones front and rear, and robust side impact protection built into the doors.

Front, side and curtain airbags, energy-absorbing seats, and seatbelt pre-tensioners, as well as innovative features like the de-coupling brake pedal, help provide increased protection.

JAGUAR was also the first to introduce disk brakes into motorsport. Today S-TYPE'S Anti-lock Braking Systems (ABS) are again at the forefront of car technology, with Electronic Brake Distribution (EBD) that automatically helps balance brake pressure across the wheels, according to speed and load, for the best possible control and stability.

Emergency Brake Assist (EBA) detects the speed at which the brake pedal is pressed and applies maximum pedal pressure if needed, for the most effective braking possible.

And there are ISOfix child safety fixings developed to help keep youngsters out of harm's way.





The S-TYPE interior blends
JAGUAR craftsmanship and
with the latest in *contemporary*





all the strengths of traditional renowned attention to detail, *design.*

The choice is yours; fine leather, matched highly polished wooden veneers - or the modern high-tech aluminium interior finish, on fascia, centre console and doors.

A wide range of options and accessories, which can be seen at jaguar.com, enable you to personalise your S-TYPE to match your individuality, from sport interior theme with perforated leather seats, to contrast piped softgrain leather upholstery.

The plush, leather interiors of SE models feature colour-keyed upper fascia and door top rolls, wood/leather steering wheel with polished wood gearknob.

Relax in the luxury of redesigned Classic leather seats, on SE models, available with optional distinctive Satin Mahogany veneer.

The High Luxury Pack is the pinnacle of S-TYPE luxury. The Burr Walnut fascia and door trims are hand polished. The softgrain leather upholstery, the luxury floor mats, cupholders for those in the rear seats, front two-stage heated seats, and chromed headrest bezels, surround you with elegance. Ivory softgrain seats with Charcoal piping and a Charcoal upper fascia are now available as an additional combination on the High Luxury Pack.

Plus, of course, there is a wide range of unique official accessories for S-TYPE, designed specifically to further enhance the individuality of your JAGUAR. A range of stylish and striking accessories, as well as premium in-car entertainment, alloy wheels and carry/towing solutions, can be found in greater detail at jaguar.com and in the JAGUAR Accessories brochure.





Interior theme: S-TYPE R Two-Tone, Dove and Warm Charcoal with Aluminium veneer



Interior theme: S-TYPE SE in Ivory and Warm Charcoal with Satin Mahogany Veneer





Interior theme: S-TYPE High Luxury Pack, Ivory and Mocha with Burr Walnut veneer

Intuitive Technology. Sophisticated, *yet simple.*

In the S-TYPE, the JAGUAR blend of luxury and thoughtful use of technology is immediately obvious, JAGUAR'S discrete application of innovation, the unique interior, create an individual blend of sporting luxury



STEERING WHEEL

The ergonomically designed multi-function steering wheel power-adjusts for reach and tilt, allowing the hands to fall precisely for instant, effortless, management of cruise control, audio, and options like JaguarVoice® and Bluetooth® Telephone Connectivity.



HEADLAMPS AND PARKING AID

High-intensity, blue-white Xenon headlamps feature automatic levelling and headlamp washers (standard on the S-TYPE R) for improved night-time driving and greater confidence. Rear Park Distance Control, which uses ultrasonic sensors to alert you to the proximity of obstacles when parking, is now standard across the entire S-TYPE line-up, while front ultrasonic sensors can also be specified.



7 INCH SCREEN

The state-of-the-art 7 inch Touch screen gives you fingertip audio and climate control, as well as simple, instant access to the navigation system using the very latest thin film transistor screen and LCD technology.



SEATS

Pull up your favourite leather armchair. The memory function ensures it is always in exactly the right position every time for greater driving control, with in built heating.

Key options

The comprehensive JAGUAR Options range ensures your S-TYPE is just the way you want it. Enhancing, complementing your car to suit your unique lifestyle. **ADAPTIVE CRUISE CONTROL (ACC)** uses radar technology to detect slower moving traffic on the road ahead. The system is designed to slow the S-TYPE to maintain a pre selected gap from the vehicle in front. When the slower vehicle no longer obstructs your path the S-TYPE will accelerate to your chosen speed. **XENON HEADLAMPS** Providing increased light output on both dipped and main beam for maximum night driving confidence. **PREMIUM SOUND SYSTEM** Optimised for your JAGUAR S-TYPE. The luxury of in-car sound with the quality of your own home system. **FRONT PARKING AID** Sensors in the front bumper warn of out-of-sight bollards, and hidden kerbs for ease of parking and manoeuvring. **JAGUAR BLUETOOTH® TELEPHONE CONNECTIVITY** For Easy and convenient hands-free mobile phone operation when connected to a compatible Bluetooth® enabled mobile. **HIGH LUXURY PACK** Sumptuous, exclusive, with the finest softgrain premium leather, elegant piping and rich, traditional Burr Walnut veneer.



R



Accessories

Each JAGUAR Accessory has been individually created to enhance further the sense of occasion that is the S-TYPE ownership experience. From towing and carrying solutions, to sporty styling pack - to meet any requirement, perfectly.

AUDIO CONNECTIVITY MODULE Allows you to listen to your favourite music from your mp3 player or Apple iPod® through your vehicle's audio system. **REAR SCREEN CONNECTIVITY** Allows connection of MP4, iPod Gen 5 or portable DVD devices to be played through the infra red headphones and 2 x 5.8" LCD screens located in the driver and passenger headrests. **EXTERIOR STYLING PACK** A bespoke range of stylish and striking accessories including front valance, mesh grilles, side sills, rear valance, exhaust tail pipe trims, boot lid spoiler and unique 18 inch alloy wheels. **BIKE CARRIER & SKI CARRIER** Quick, convenient way of making your leisure activities even easier. **CAR COVER** Giving superb protection from showers, frost and dust. Hot Climate and All Weather covers available. **ROOF BOX** Ideal for soft luggage with a capacity of 450 LITRES. **TOW BAR** With detachable ball hitch, has been designed, engineered and tested specifically to match the S-TYPE for maximum safety and durability. **VALET KITS** Approved by JAGUAR, this comprehensive range of car care products has been thoroughly tested to ensure complete compatibility with your S-TYPE's paintwork and interior trim. **PREMIUM CARPET MATS** Tailored carpet sets, available in a choice of colours, to keep your interior carpets looking like new. **LUGGAGE COMPARTMENT LINERS** Ideal for golf bags and other equipment, the easy-to-clean liner is designed to exactly match the luggage compartment.



STANDARD FEATURES

MODEL AND ENGINES	V6 (3.0)	SE (2.7D/3.0/4.2) in addition to V6	S-TYPE R (4.2 Supercharged) in addition to V6
TRANSMISSION SUSPENSION, AND BRAKES	<ul style="list-style-type: none"> 6-speed electronic automatic transmission Dynamic Stability Control (DSC) Traction control Vented disc brakes, front and rear Electric Parking Brake (EPB) 		<ul style="list-style-type: none"> R suspension with Computer Active Technology Suspension (CATS) Jaguar R vented disc brakes with four piston silver colour callipers and Jaguar R logo
EXTERIOR	<ul style="list-style-type: none"> Chrome grille surround with bright mesh grille Chrome rear signature blade Chrome bumper blades Chrome side window surrounds Headlamps with automatic on/off and manual levelling Heated exterior mirrors with electric adjustment Heated rear window with timer Parking aid with rear sensors 	<ul style="list-style-type: none"> Auto-dimming exterior mirrors (includes interior rear view mirror) Metallic paint 	<ul style="list-style-type: none"> Body colour grille surround with bright mesh grille Body colour bumper blades Rear spoiler Satin black side window surrounds Metallic paint Xenon headlamps with automatic levelling Headlamp washers Auto-dimming exterior mirrors (includes interior rear view mirror) Heated and power-folding exterior mirrors with electric adjustment
WHEELS	<ul style="list-style-type: none"> Antares 7.5J x 17" alloy wheels Space saver spare wheel 	<ul style="list-style-type: none"> Triton 8J x 18" alloy wheels 	<ul style="list-style-type: none"> Barcelona* 8J x 19" (front) / 9.5J x 19" (rear) alloy wheels**
INTERIOR	<ul style="list-style-type: none"> Classic interior theme Driver's and passenger's front seats with electric adjustment Classic cloth seats (6/6 way) Folding 60/40 split rear seats Leather 4-spoke steering wheel with remote controls for audio, cruise control, optional JaguarVoice® and Bluetooth® telephone connectivity Automatic climate control with air filtration and dual zone temperature control for driver and front passenger Cruise control Steering column with electric adjustment for height and reach with entry and exit tilt-away Sun visors with illuminated vanity mirrors Trip computer with dual function 	<ul style="list-style-type: none"> Classic seats with leather seat facings (10/8 way) Memory function with 2 settings for driver's seat, exterior mirrors, steering column Wood /leather rim, 4-spoke steering wheel with remote controls for audio, cruise control, optional JaguarVoice® and Bluetooth® telephone connectivity*** Twin front cup holders with auxillary power socket 	<ul style="list-style-type: none"> R seats with leather seat facings (16/12 way) Twin front cup holders with auxillary power socket Carpet mat set R interior theme Memory function with 2 settings for driver's seat, exterior mirrors, steering column Folding 60/40 split rear seats are not available on R Ski hatch with bag
AUDIO AND COMMUNICATIONS	<ul style="list-style-type: none"> Jaguar Sound System 		<ul style="list-style-type: none"> Bluetooth® telephone pre-wire

SAFETY AS STANDARD

Airbags, front and side (driver and front passenger)
Side curtain airbags
Adaptive Restraint Technology System (A.R.T.S.)
Anti-lock Braking System (ABS)
Emergency Brake Assist (EBA)
Energy absorbent seating system
High level rear stop light
ISOFix anchor points for rear child seat
Front and rear seat belts pre-tensioners

SECURITY AS STANDARD

Remote control central locking with drive-away locking
Security system and perimeter alarm with engine immobiliser

GLOSSARY

CATS (Computer Active Technology Suspension) – co-ordinates the best possible balance between ride and handling by analysing road conditions and making up to 3,000 adjustments every second to the suspension settings via electronically controlled dampers.

Dynamic Stability Control (DSC) – intervenes in demanding driving situations by applying braking to individual wheels and reducing engine torque.

Classic interior theme - Colour keyed upper fascia and upper front door panels, Bronze Stained Sapele veneer on fascia and door panel inserts and wooden gear knob (automatic).

Classic cloth seats (6/6 way) - Driver and passenger's electric adjustment including fore/aft, height and recline adjustment.

Classic seats with leather seat facings (8/6 way) - Driver's electric adjustment including fore/aft, height, cushion tilt, recline and passenger's electric adjustment including fore/aft, height and recline.

Classic seats with leather seat facings (10/8 way) - Driver's electric adjustment including fore/aft, height, cushion tilt, recline, lumbar support and passenger's electric adjustment including fore/aft, height, recline and lumbar support.

R interior theme - Warm Charcoal upper fascia and upper front door panels, Aluminium fascia and door panel inserts, R leather steering wheel, R leather with chrome sides gear knob.

R seats with leather seat facings (16/12 way) - Driver's electric adjustment including fore/aft, height, cushion tilt, recline, lumbar support, cushion length and passenger's electric adjustment including fore/aft, height, cushion tilt, recline and lumbar support.

Navigation system - With DVD mapping and a 7 inch Touch screen controls for postcode entry, audio, automatic climate control and (where fitted) JaguarVoice® and Bluetooth® telephone connectivity (both available in some markets). DVD mapping available for some countries only - please contact your local dealer for availability.

Jaguar Sound System - With radio featuring EON, RDS, PTY, TA and single slot CD player with automatic volume control and 4 speakers.

Jaguar Premium Sound System - With radio featuring EON, RDS, PTY, TA, DSP and single slot CD player with automatic volume control, power amplifier and 10 speakers.

Bluetooth® telephone connectivity – a Bluetooth® equipped Jaguar, enables hands-free use of your mobile phone at any time when the phone is in the car. Bluetooth® is compatible with a selected range of mobile phones from a number of different manufacturers. Available in some markets only - please contact your local dealer for availability.

Bluetooth® telephone pre-wire – pre-wire only of Bluetooth® telephone connectivity. Does not include components to enable Bluetooth® operation.

(The Bluetooth® word mark and logos are owned by the Bluetooth SIG, Inc. and any use of such marks by Jaguar Cars Limited is under license.)

JaguarVoice® - Voice control of audio, automatic climate control and (where fitted) Bluetooth® telephone connectivity and Navigation.**

Convenience Pack - Parking aid with front sensors, rain sensing windscreen wipers, power-folding exterior mirrors, auto-dimming exterior and interior rear view mirrors.

High Luxury Pack - High Luxury softgrain leather pack, centre console, door panels, 16/12 way heated seats with driver's electric adjustment including fore/aft, height, cushion tilt, recline, lumbar support, cushion length and passenger's electric adjustment including fore/aft, height, cushion tilt, recline and lumbar support; memory function; Walnut veneer pack including fascia, door panel inserts, centre and overhead consoles; Wood and leather steering wheel and wooden gear knob; Premium carpet mats and rear cup holders.

Sport Pack - Sport perforated seats (10/8 way) with leather seat facings, driver's electric adjustment including recline and lumbar support, Aluminium fascia and door panel inserts, sport perforated leather steering wheel, sport leather with chrome sides gear knob (automatic), body colour bumper blades and grille surround, satin black window surrounds and sports suspension.

Winter Pack - Headlamp washers, heated front windscreen and heated front seats.

Xenon Winter Pack - Headlamp washers, heated front windscreen, heated front seats and Xenon headlamps with automatic levelling.

OPTIONAL FEATURES

MODEL AND ENGINES	V6 (3.0)	SE (2.7D/3.0/4.2)	S-TYPE R (4.2 Supercharged)
TRANSMISSION SUSPENSION, AND BRAKES		<ul style="list-style-type: none"> ◦ Sports suspension 	
EXTERIOR	<ul style="list-style-type: none"> ◦ Metallic paint ◦ Bonnet leaper ◦ Xenon headlamps with automatic levelling (requires headlamp washers) ◦ Headlamp washers ◦ Parking aid with front sensors ◦ Electric glass sunroof with sunblind and tilt/slide one touch operation ◦ Auto-dimming exterior mirrors (includes interior rear view mirror) ◦ De-badge option - delete engine badge on boot ▲ ◦ Heated and power-folding exterior mirrors with electric adjustment ◦ Heated windscreen with timer ◦ Rain sensing windscreen wipers (requires auto-dimming interior rear view mirror) 	<ul style="list-style-type: none"> ◦ Bonnet leaper ◦ Xenon headlamps with automatic levelling (requires headlamp washers) ◦ Headlamp washers ◦ Parking aid with front sensors ◦ De-badge option - delete engine badge on boot ▲ ◦ Electric glass sunroof with sunblind and tilt/slide one touch operation ◦ Heated and power-folding exterior mirrors with electric adjustment ◦ Heated windscreen with timer ◦ Rain sensing windscreen wipers 	<ul style="list-style-type: none"> ◦ Bonnet leaper ◦ Parking aid with front sensors ◦ De-badge option - delete engine badge on boot ▲ ◦ Electric glass sunroof with sunblind and tilt/slide one touch operation ◦ Heated windscreen with timer ◦ Rain sensing windscreen wipers
WHEELS	<ul style="list-style-type: none"> ◦ Valencia 8J x 18" alloy wheels ◦ Triton 8J x 18" alloy wheels ◦ Mercury 8J x 18" alloy wheels ◦ Full size spare wheel 	<ul style="list-style-type: none"> ◦ Barcelona* 8J x 19" alloy wheels** ◦ Valencia 8J x 18" alloy wheels ◦ Mercury 8J x 18" alloy wheels ◦ Full size spare wheel 	<ul style="list-style-type: none"> ◦ Vulcan 8J x 18" (front) / 9.5J x 18" (rear) alloy wheels ▲ (Vulcan standard in some countries where 19" Barcelona is not available)
INTERIOR	<ul style="list-style-type: none"> ◦ Classic seats with leather seat facings (8/6 way) ◦ Dual-stage heated front seats ◦ Wood/leather, 4-spoke steering wheel*** ◦ Carpet mat set ◦ Electric rear window sunblind ◦ Front ashtray with cigar lighter and ashtrays in centre console and passenger doors ▲ ◦ Twin front cup holders with auxiliary power socket ◦ Twin rear cup holders (requires leather seats) ◦ Satin Mahogany veneer*** 	<ul style="list-style-type: none"> ◦ Dual-stage heated front seats ◦ Ivory leather trim ◦ Leather, 4-spoke steering wheel ▲ ◦ Adaptive Cruise Control (ACC) with Forward Alert** ◦ Carpet mat set ◦ Electric rear window sunblind ◦ Front ashtray, with cigar lighter and ashtrays in centre console and passenger doors ▲ ◦ Ski hatch with bag (requires High Luxury Pack) ◦ Twin rear cup holders ◦ Satin Mahogany veneer*** (not available with optional High Luxury Pack) 	<ul style="list-style-type: none"> ◦ Classic seats with leather seat facings (10/8 way) ▲ ◦ Dual-stage heated front seats ◦ Adaptive Cruise Control (ACC) with Forward Alert** ◦ Electric rear window sunblind ◦ Front ashtray, with cigar lighter and ashtrays in centre console and passenger doors ▲ ◦ Twin rear cup holders ◦ Satin Mahogany veneer*** (not available with optional High Luxury Pack) ◦ Ivory leather (with High Luxury Pack only)
AUDIO AND COMMUNICATIONS	<ul style="list-style-type: none"> ◦ Navigation System with DVD mapping and 7 inch Touch screen** ◦ Jaguar Premium Sound System ◦ 6-disc luggage compartment CD changer ◦ Bluetooth® telephone connectivity** ◦ Bluetooth® telephone pre-wire ◦ JaguarVoice®*** 	<ul style="list-style-type: none"> ◦ Navigation System with DVD mapping and 7 inch Touch screen** ◦ Jaguar Premium Sound System ◦ 6-disc luggage compartment CD changer ◦ Bluetooth® telephone connectivity** ◦ Bluetooth® telephone pre-wire ◦ JaguarVoice®*** 	<ul style="list-style-type: none"> ◦ Navigation System with DVD mapping and 7 inch Touch screen** ◦ Jaguar Premium Sound System ◦ 6-disc luggage compartment CD changer ◦ Bluetooth® telephone connectivity** ◦ JaguarVoice®***
PACKS	<ul style="list-style-type: none"> ◦ Convenience Pack ◦ Winter Pack ◦ Xenon Winter Pack 	<ul style="list-style-type: none"> ◦ High Luxury Pack ◦ Sport Pack ◦ Winter Pack ◦ Xenon Winter Pack 	<ul style="list-style-type: none"> ◦ High Luxury Pack

▲ optional at no extra cost

Note: Standard and optional features are subject to availability within markets. For market specific changes please see your dealer.

*The 19" Barcelona wheel and tyre assembly is of low profile with a bias towards sporting attributes. Wheel and tyre assemblies with low tyre sidewall height will be more susceptible to impact damage in service.

**For availability please contact your local dealer or visit jaguar.com

***Wood/leather steering wheel and gear knob not available with Satin Mahogany veneer. Leather steering wheel and gear knob will be fitted when Satin Mahogany is specified.



VALENCIA 18" ALLOY WHEEL



ANTARES 17" ALLOY WHEEL



TRITON 18" ALLOY WHEEL



**BARCELONA 19" ALLOY WHEEL

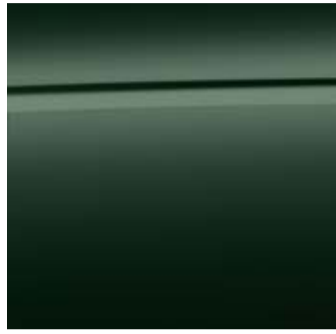


MERCURY 18" ALLOY WHEEL

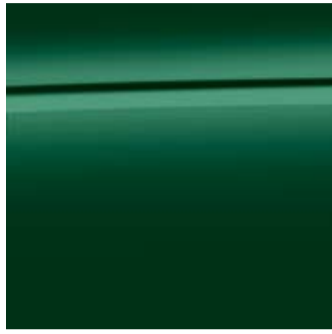


VULCAN 18" ALLOY WHEEL

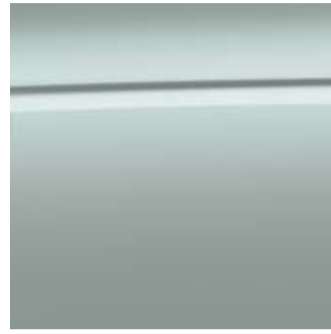
EXTERIOR COLOURS



British Racing Green ◊



Emerald Fire*



Sea Frost*



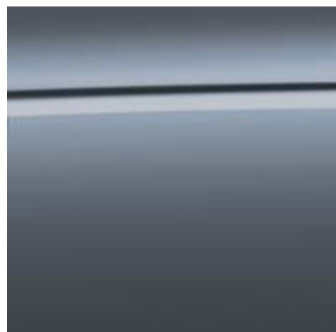
Porcelain



Liquid Silver*



Lunar Grey*



Slate* ◊



Frost Blue* ◊



Blue Prism*



Indigo*



Midnight*



Ebony



Radiance*



Winter Gold*

*Metallic paint ◊ Exterior colours not available from Spring 2007

**The 19" Barcelona wheel and tyre assembly is of low profile with a bias towards sporting attributes. Wheel and tyre assemblies with low tyre sidewall height will be more susceptible to impact damage in service.

CLASSIC

LEATHER TRIM □



SEAT TRIM	LOWER FACIA	UPPER FACIA	VENEER	DESIGNER'S PAINT CHOICE ◇
Champagne▲ ○	Champagne▲	Mocha▲	Bronze stained Sapele▲	British Racing Green Emerald Fire* Porcelain
Warm Charcoal	Warm Charcoal	Warm Charcoal	Bronze stained Sapele	Liquid Silver* Lunar Grey* Midnight* Radiance* Ebony Slate*
Dove	Dove	Granite	Bronze stained Sapele	Indigo* Liquid Silver* Lunar Grey* Slate*
Ivory! †	Ivory	Mocha	Bronze stained Sapele	Frost Blue* Winter Gold*
Ivory! †	Ivory	Warm Charcoal	Bronze stained Sapele	Ebony Emerald Fire* Indigo*

□ Standard on SE †Not available on Classic ○Also available in cloth on Classic. Please see jaguar.com for further details on cloth seat style.

R INTERIOR - MONOTONE

LEATHER TRIM



SEAT TRIM	LOWER FACIA	UPPER FACIA	VENEER	DESIGNER'S PAINT CHOICE ◇
Champagne	Champagne	Warm Charcoal	Aluminium	Ebony Frost Blue* Midnight*
Warm Charcoal▲	Warm Charcoal▲	Warm Charcoal▲	Aluminium▲	Blue Prism* Ebony Liquid Silver* Lunar Grey* Midnight* Radiance* Slate* Emerald Fire*

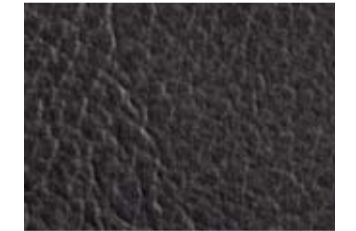
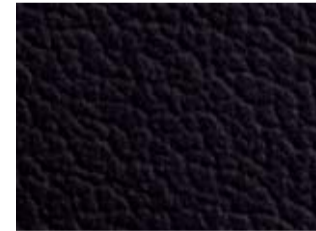
R INTERIOR - TWO-TONE

LEATHER TRIM



SEAT TRIM	LOWER FACIA	UPPER FACIA	VENEER	DESIGNER'S PAINT CHOICE ◇
Dove / Warm Charcoal▲ with Dove contrast stitching	Warm Charcoal▲	Warm Charcoal▲	Aluminium▲	Liquid Silver* Lunar Grey* Ebony Midnight*

SEAT & TRIM COLOURS



Ivory

Dove

Champagne

Warm Charcoal

Mocha (upper facia)

Granite (upper facia)

◇ Designer's choice exterior paint finishes are published as a guide. Most exterior paint colours are available with all interior colour combinations.

▲ Combination as illustrated *Metallic paint

HIGH LUXURY PACK (OPTION ON SE AND R)



SOFTGRAIN LEATHER TRIM WITH PIPING



SEAT TRIM	LOWER FACIA	UPPER FACIA	VENEER	DESIGNER'S PAINT CHOICE
Champagne with Mocha piping	Champagne	Mocha	Burr Walnut	Winter Gold* Porcelain British Racing Green Radiance* Frost Blue*
Warm Charcoal with Warm Charcoal piping	Warm Charcoal	Warm Charcoal	Burr Walnut	Blue Prism* Ebony Liquid Silver* Lunar Grey* Midnight* Radiance* Seafrost*
Ivory▲ with Mocha piping	Ivory▲	Mocha▲	Burr Walnut▲	Frost Blue* Winter Gold*
Ivory with Warm Charcoal piping	Ivory	Warm Charcoal	Burr Walnut	Ebony Indigo* Emerald Fire*

SPORT PACK - MONOTONE (OPTION ON SE)



PERFORATED LEATHER TRIM



SEAT TRIM	LOWER FACIA	UPPER FACIA	VENEER	DESIGNER'S PAINT CHOICE
Champagne	Champagne	Warm Charcoal	Aluminium	Ebony Frost Blue* Midnight*
Warm Charcoal▲	Warm Charcoal▲	Warm Charcoal▲	Aluminium▲	Blue Prism* Ebony Liquid Silver* Lunar Grey* Midnight* Radiance* Slate* Emerald Fire*

SPORT PACK - TWO-TONE (OPTION ON SE)



PERFORATED LEATHER TRIM



SEAT TRIM	LOWER FACIA	UPPER FACIA	VENEER	DESIGNER'S PAINT CHOICE
Dove / Granite▲	Granite▲	Granite▲	Aluminium▲	Liquid Silver* Lunar Grey* Slate* Frost Blue*

CONTRAST PIPING



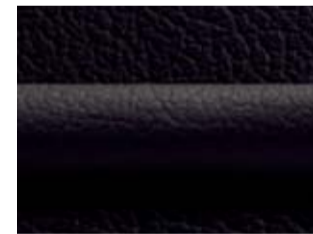
Ivory/Mocha



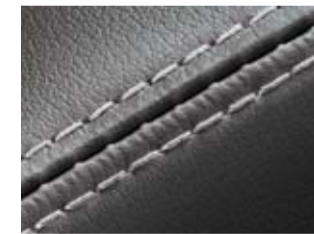
Champagne/Mocha



Ivory/Warm Charcoal



Warm Charcoal/Warm Charcoal



Warm Charcoal/Dove

CONTRAST STITCHING

VENEERS



Bronze stained Sapele



Satin Mahogany



Aluminium



Burr Walnut

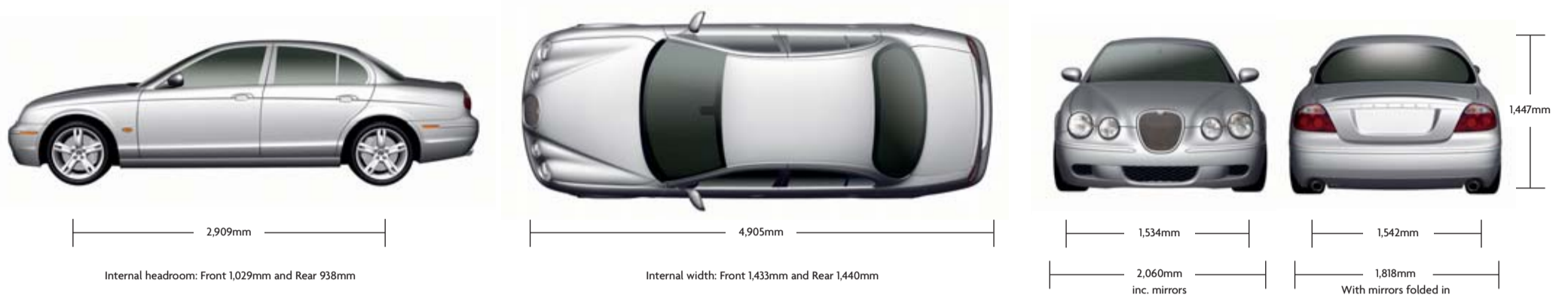
Jaguar uses natural materials for its wood veneers. Therefore there may be variation in pattern and grain from the examples shown.

◇ Designer's choice exterior paint finishes are published as a guide. Most exterior paint colours are available with all interior colour combinations.

▲ Combination as illustrated *Metallic paint

Please see jaguar.com for exterior/interior colour configurations or contact your local dealer.

TECHNICAL SPECIFICATIONS



Dimensions shown in mm.

NOTE: The dimension details refer to a nominal car but may vary marginally from car to car due to design and production tolerances. The nominal condition has been used wherever possible. Please consult your dealer for details of changes associated with option fitment.

TECHNICAL SPECIFICATIONS

ENGINE	2.7 Litre V6 Diesel*	3.0 Litre V6	4.2 Litre V8	4.2 Litre V8 Supercharged
Cylinders/valves per cylinder	6/4	6/4	8/4	8/4
Bore/stroke – mm	81/88	89.0/79.5	86.0/90.3	86.0/90.3
Capacity – cc	2,720	2,967	4,196	4,196
Maximum power – PS (kW)	207 (152)	238 (175)	298 (219)	395 (291)
@ rev/min	4,000	6,800	6,000	6,100
Maximum torque – Nm (lb.ft.)	435 (320)	293 (216)	411 (303)	541 (399)
@ rev/min	1,900	4,100	4,100	3,500
Compression ratio: 1	17.3	10.5	11.0	9.1
PERFORMANCE (manufacturer's estimates)	6-Speed Auto	6-Speed Auto	6-Speed Auto	6-Speed Auto
Acceleration 0-100 km/h – sec	8.6	7.9	6.5	5.6
Top speed – km/h	227	233	250 Limited	250 Limited
FUEL CONSUMPTION ⁽¹⁾				
Urban – l/100km	10.7	16.3	17.2	18.6
Extra urban – l/100km	6.2	7.8	8.4	9.3
Combined – l/100km	7.8	10.8	11.5	12.4
Carbon dioxide emissions – g/km	208	259	274	294
Tank capacity – Ltr approx. (incl. 5 Ltr reserve)	68.0	68.0	68.0	68.0
WEIGHT ⁽²⁾ / DIMENSIONS				
Weight – kg	1,790	1,710	1,740	1,830
Gross vehicle weight – kg	2,275	2,180	2,210	2,275

Permitted roof load – kg 75 Permitted trailer load, unbraked – kg ⁽³⁾ 750 Permitted trailer load, braked – kg ⁽³⁾ 1,850 Permitted towbar download – kg 75
Turning circle – m 11.48 Boot volume – litres – VDA 400 Boot volume with rear seats folded – litres – VDA 810 ⁽⁴⁾

⁽¹⁾ The fuel consumption figures were obtained in tests carried out in line with the Passenger Car Fuel Consumption Amendment Order 1996 (Reflecting EU Directive 1999/100/EC fuel consumption test cycle). These figures were correct at the time of going to press.

⁽²⁾ Please consult your dealer for details of changes associated with option fitment. Weights reflect vehicles to standard specifications. Optional extras increase weight.

⁽³⁾ Up to maximum 12% gradient.

⁽⁴⁾ Not applicable to S-TYPE R

* Not available in all markets. Please contact your local dealer for availability





The S-TYPE ownership experience. Service, assurance, and peace of mind are all part of the pride of *owning your S-TYPE.*

THE JAGUAR ACCESSORY RANGE

Enabling you to personalise your car, to create a driving experience that is even more individually rewarding. All JAGUAR accessories are tested rigorously for safety and durability in the most arduous of climates and conditions. A comprehensive range of styling options, interior and exterior accessories, enabling you to tailor your S-TYPE to suit your personal style.

BECAUSE ONLY THE BEST WILL DO

An official JAGUAR dealer can ensure that JAGUAR trained, specialist technicians, with access to the full range of JAGUAR approved parts and tools, will always be on hand to guarantee that every fitting, or repair, is carried out exactly the way JAGUAR intended. Your JAGUAR dealer can also supply and fit JAGUAR approved accessories to personalise and add to the practicality and style of your S-TYPE model.

TOTAL CARE

Providing a seamless support system for you and your S-TYPE with regular servicing, three year unlimited kilometre warranty, paint and corrosion guarantee and JAGUAR Assistance Programme.

SERVICE AND ASSURANCE

Complete peace of mind, as well as Standard Price Servicing. Total Tyre Care includes everything from checking tread depth to wheel alignment and competitively priced tyre replacement. Seasonal Health Checks guarantees that, 365 days a year, your S-TYPE stays in premium condition.

JAGUAR ASSISTANCE

Your own JAGUAR 24 hour Incident Management Support programme, ensuring that JAGUAR trained assistance technicians are on hand should circumstances arise: from a roadside puncture, to difficulties following an accident.

WARRANTY

3 year unlimited kilometre warranty together with a 3 year unlimited kilometre Paint Surface Warranty and 6 year unlimited kilometre Corrosion (Perforation) Warranty. Extended warranties are also available. The options lengthen the standard 3 year unlimited kilometre warranty to cover a further 12, 24 or 36 months, giving unlimited kilometre warranty through years 4, 5 and 6 of ownership.

JAGUAR MAGAZINE

From travel to fashion, chic to champagne, JAGUAR magazine is an owner's publication like no other. JAGUAR articles touch on everything from exclusive holiday destinations to fine wines, art to architecture. As well as features and interviews bringing all the latest news from the world of S-TYPE and JAGUAR.

JAGUAR.COM

Dedicated to you and your S-TYPE, the interactive jaguar.com web site features helpful tools such as the dealer locator, model specifications - allowing you to see the car tailored to your specification and colour - and price lists; the latest information on all the JAGUAR models and a fascinating look into the passion and legacy that infuse the JAGUAR name.

JAGUAR FINANCIAL SERVICES

Whether your requirements are business or personal, JAGUAR Financial Services offers maximum choice and flexibility with a wide range of financial and insurance plans tailored to your needs.







BY APPOINTMENT TO
HER MAJESTY QUEEN ELIZABETH II
MANUFACTURERS OF DAIMLER AND JAGUAR CARS
JAGUAR CARS LIMITED COVENTRY



BY APPOINTMENT TO
HER MAJESTY QUEEN ELIZABETH
THE QUEEN MOTHER
MANUFACTURERS OF DAIMLER AND JAGUAR CARS
JAGUAR CARS LIMITED COVENTRY



BY APPOINTMENT TO
HIS ROYAL HIGHNESS THE PRINCE OF WALES
MANUFACTURERS OF DAIMLER AND JAGUAR CARS
JAGUAR CARS LIMITED COVENTRY

IMPORTANT NOTICE

Jaguar Cars Limited is constantly seeking ways to improve the specification, design and production of its vehicles and alterations take place continually. Whilst every effort is made to produce up-to-date literature, this brochure should not be regarded as an infallible guide to current specifications, nor does it constitute an offer for the sale of any particular vehicle. Distributors and dealers are not agents of Jaguar Cars Limited by any express or implied undertaking or representation.

Illustrations in this brochure may include optional extras.

ENVIRONMENTAL NOTICE

Jaguar Cars Limited has a vision of being amongst the world's leading companies in demonstrating progress towards sustainability. We aim to do this by contributing to a better quality of life for communities affected by the design, manufacture, use and disposal of Jaguar cars. We believe that playing a supportive role in the communities in which we operate is a privilege, not an obligation. Corporate citizenship goes to the very heart of our company. It is Jaguar's policy continually to improve its high environmental standards in all areas of business activity. This brochure is produced using virgin wood fibre from sawmill residues, forest thinnings and sustainable forests. Pulps used are Elemental Chlorine Free.



FSC
Mixed Sources
SA-COC-1487
www.fsc.org

Jaguar Cars Limited
Browns Lane, Allesley
Coventry CV5 9DR
jaguar.com

Printed in England

JLM/61/02/06/08

S-TYPE



JAGUAR

JAGUAR.COM

