

AIRPORT



Introducing the

CHECKER AEROBUS

Introducing the

CHECKER AEROBUS

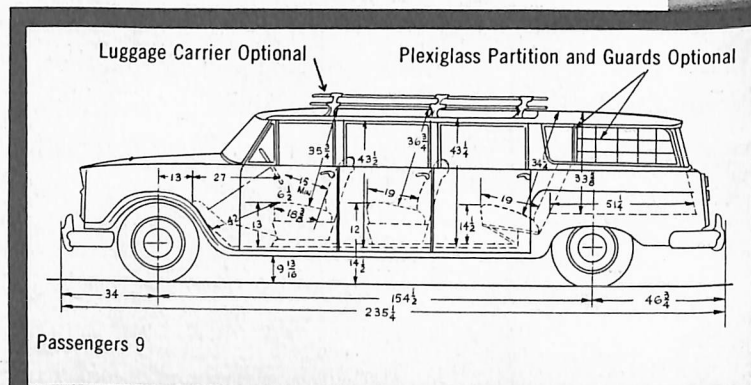
THE TAXI-PROVEN LIMOUSINE THAT'S BUILT TO BE A LIMOUSINE

Checker doesn't merely convert standard sedans and call them limousines. Checker designs, engineers and builds an authentic limousine and calls it the Aerobus. The new Checker Aerobus is every inch a limousine, built for the purpose from the ground up.

Checker's new Aerobus combines the luxury and comfort of a limousine with the economy of a passenger car and the durability of a taxi. Built with pride by the makers of the famed Checker Cab, the Aerobus is available in 9 and 12 passenger models. Maintenance and repair costs are remarkably low, the life of the Aerobus is incredibly long. This purpose-built limousine gives

you years of virtually trouble-free, payload performance.

When you buy a Checker Aerobus, you get what you pay for . . . a limousine that's *built* to be a limousine.



Not A "Stretch-Out" — But "A Built-For-The-Purpose-Limousine"

SPECIFICATIONS 9 PASSENGER

Wheelbase	154 1/2"	Angle of Approach	18°
Overall Length	235.25"	Angle of Departure	17°
Overall Width	76"	Minimum Road Clearance at Rear Axle	7.8"
Overall Height	64.37"	Overhang, Front	34.00"
Curb Weight	4330 lbs.	Overhang, Rear	46.75"
Cargo Volume	40 cu. ft.	Rear Seats, Hip Room	64"
Front Headroom	35.75"	Windshield Width	58.0"
Bottom of Doors to Ground (Loaded)	12.05"	Back Window Width	45.25"
Ramp Breakover Angle	12 1/2°	Turning Radius (curb to curb)	47.3'

THE ECONOMY OF THE CHECKER AEROBUS

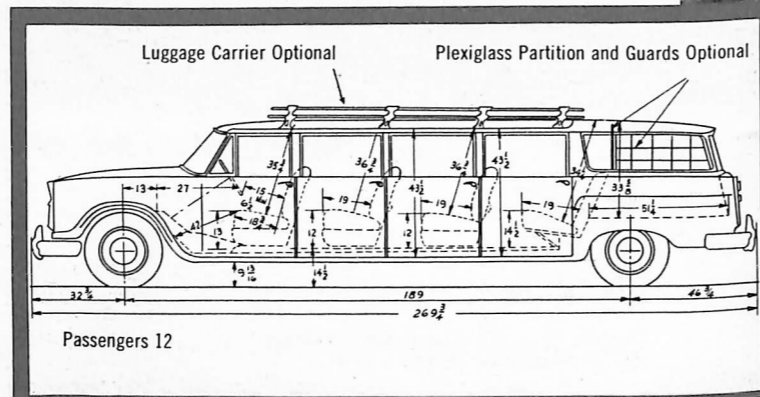
CHECKER economy is more than a mere claim. It's an established fact, proven over literally billions of miles of round-the-clock operation by profit-conscious cab operators. The CHECKER Aerobus is built to last 150,000, even 200,000 miles. And that's a lot of mileage in anyone's book.

THE VERSATILITY OF THE CHECKER AEROBUS

The CHECKER Aerobus provides ideal group transportation for airports and airlines, clubs and lodges, resorts, hotels, courtesy busses, schools and colleges. It's a practical car for municipal institutions, rest homes, athletic teams, travel and tour agencies. Wherever there's a need for transporting 9 or more passengers, there's a need for an Aerobus.

THE CAPACITY OF THE CHECKER AEROBUS

The Aerobus is available in 6-door or 8-door models, to accommodate nine or twelve passengers in CHECKER comfort. In both models, there is ample luggage space in the rear. Plenty of leg room, plenty of head room. The Aerobus was designed with *people* in mind.



The Checker AEROBUS features... **EXTRA STRENGTH... EXTRA RUGGEDNESS... EXTRA COMFORT**

SPECIFICATIONS 12 PASSENGER

Wheelbase	189"	Angle of Approach	18°
Overall Length	269.75"	Angle of Departure	17°
Overall Width	76"	Minimum Road Clearance at Rear Axle	7.8"
Overall Height	64.37"	Overhang, Front	34.00"
Curb Weight	4788 lbs.	Overhang, Rear	46.75"
Cargo Volume	40 cu. ft.	Rear Seats, Hip Room	64"
Front Headroom	35.75"	Windshield Width	58.0"
Bottom of Doors to Ground (Loaded)	12.05"	Back Window Width	45.25"
Ramp Breakover Angle	10½°	Turning Radius (curb to curb)	56.6'

Proven in Performance

CHECKER AEROBUS FEATURES

CONSTRUCTION Practical two-piece construction allows for removal of entire fender assembly or just outer half from inner portion without disturbing other parts.

RUSTPROOFING Prior to undercoating, the entire body, including the portion above the gas tank is rustproofed. Total surface of the car is more impervious to wear and weather.

BRAKES Larger brake lining area and long wearing, heavy-duty linings provide more positive stopping power.

HEAVY DUTY AXLES Available with ratio 3.91:1 and 4.56:1.

SUSPENSION Independent coil front suspension is matched to the engine. Double-acting shock absorbers and heavy-duty 6 and 9-leaf springs, 2½" wide by 56" long.

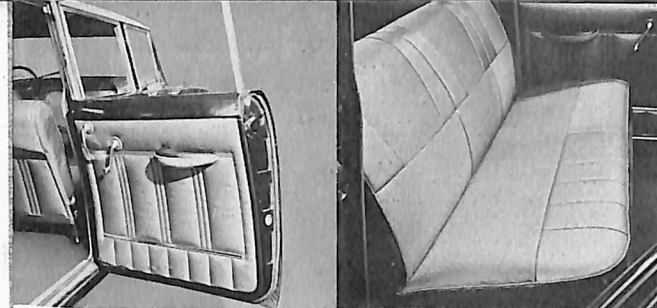
TRANSMISSION Heavy Duty Synchro-mesh transmission has extra large bearings for longer service, minimum maintenance. Tough spur gears in First and Reverse.

EASE OF HANDLING Re-circulating ball-type gear box is precisely engineered for frictionless steering control. Handles with the ease of conventional passenger car.

COMFORT All seats are fully foam rubber padded, deep spring construction. Driver's seat has manually operated mechanism for selection of position.

SAFETY The famed CHECKER heavy-duty, double channel X-Brace Frame has 3 tubular and 2 channel cross members for extra rigidity, extra strength.

ENGINE CHECKER'S famous overhead valve engine is engineered for maximum energy with lowest possible gas consumption. Rated at 122 H.P. at 4000 RPM.

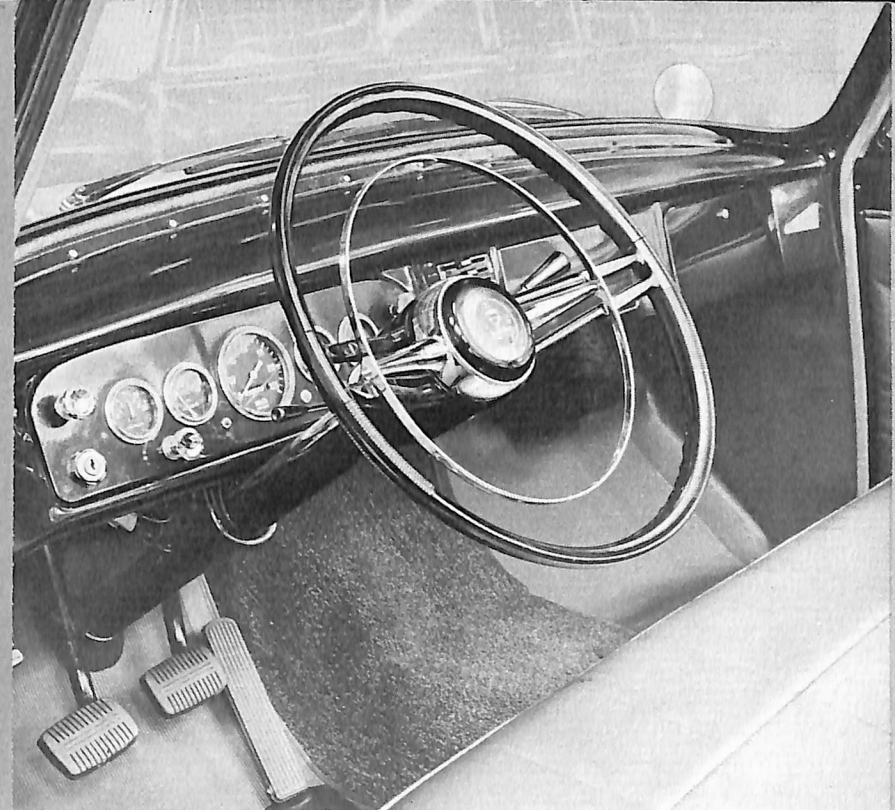


Remarkably durable, highest quality vinyl is used unsparingly throughout the handsomely designed interior of the Aerobus. Interior of door shown here is standard equipment.

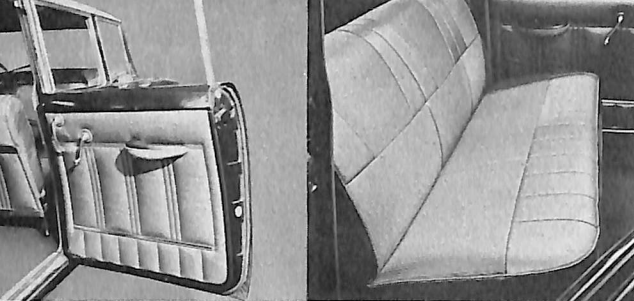
Seats of deep, comfortable, foam rubber are covered with highly durable, color coordinated, scuff-resistant vinyl. Seat shown here is standard equipment.



The Aerobus luggage compartment is partitioned off from the passenger area for additional passenger comfort and load carrying convenience. Horizontal and vertical strips of stainless steel prevent damage to windows and to the luggage.



The instrument panel of the Aerobus is simplicity itself. The direct view gauges and indicators can be read at a glance. The wide view the Aerobus affords simplifies driving in heavy traffic as well as on the highways.



Remarkably durable, highest quality vinyl is used sparingly throughout the handsomely designed interior of the Aerobus. Interior of door shown here is standard equipment.

Seats of deep, comfortable, foam rubber are covered with highly durable, color coordinated, scuff-resistant vinyl. Seat shown here is standard equipment.



The Aerobus luggage compartment is partitioned off from the passenger area for additional passenger comfort and load carrying convenience. Horizontal and vertical strips of stainless steel prevent damage to windows and to the luggage.

STANDARD EQUIPMENT FOR **CHECKER AEROBUS**

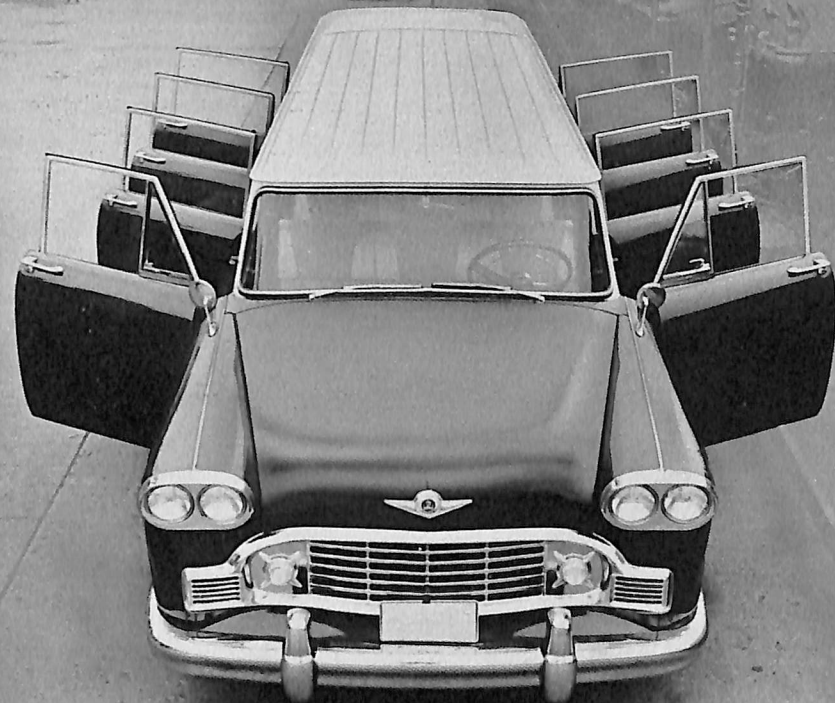
Checker products are built to last longer . . . to take more punishment . . . to perform where others fail. Costly construction features, more heavy duty parts and greater attention to detail are "Standard Equipment" with every Checker Aerobus.

1. Heavy Duty 3-Speed Standard Transmission
2. Large Engine with Long Life Economy Carburetor
3. 22-Gal. Capacity Fuel Tank
4. Power Brakes
5. Power Steering with Recirculating Ball Steering Gear
6. 40-Amp Lo Cut-In Alternator
7. 80-Amp Battery
8. Heater & Defroster
9. 2 Floor Mounted Auxiliary Heaters
10. Back-up Lights
11. Parking Brake Warning Light
12. Windshield Washer
13. 2 Outside Mirrors
14. Undercoating
15. Heavy Duty Clutch with Thermoid Facings
16. Heavy Duty 15x6L Wheels with 5½" Bolt Circle
17. 7:60x15 6-Ply and 8:20x15 6-Ply Tires
18. Parking Brake on Transmission Output Shaft
19. Front and Rear Service Brakes are 12" x 2.5"
20. Brake Master Cylinder 1.125" Bore
21. Heavy Duty Prop Shaft
22. Heavy Duty Oil Filter
23. Heavy Duty Rear Axle
24. Heavy Duty Full Frame with Reinforcing Girders and Beams
25. Front Stabilizer Bar
26. Heavy Duty Shock Absorbers with 1.625 Piston Diameter
27. Heavy Duty Front Suspension
28. 6-door Units have Heavy Duty 2½" Width 6-leaf Rear Springs
8 door Units have Heavy Duty 2½" Width 9-leaf Rear Springs
29. Heavy Duty Forged Steering Spindle
30. Painted Solid Color of Operator's Choice

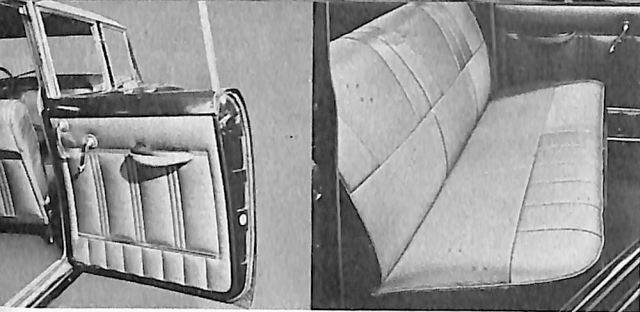
OPTIONAL EQUIPMENT

Window Grill Guard
Plexiglass Baggage Partition
Roof Luggage Carrier

Air Conditioning
2 Tone Paint



Wider door openings . . . wider seats . . . more hip room and more head room . . . these features along with the newly created luxurious interiors, welcome your riders to the Checker Aerobus . . . *the new standard for transporting people.*

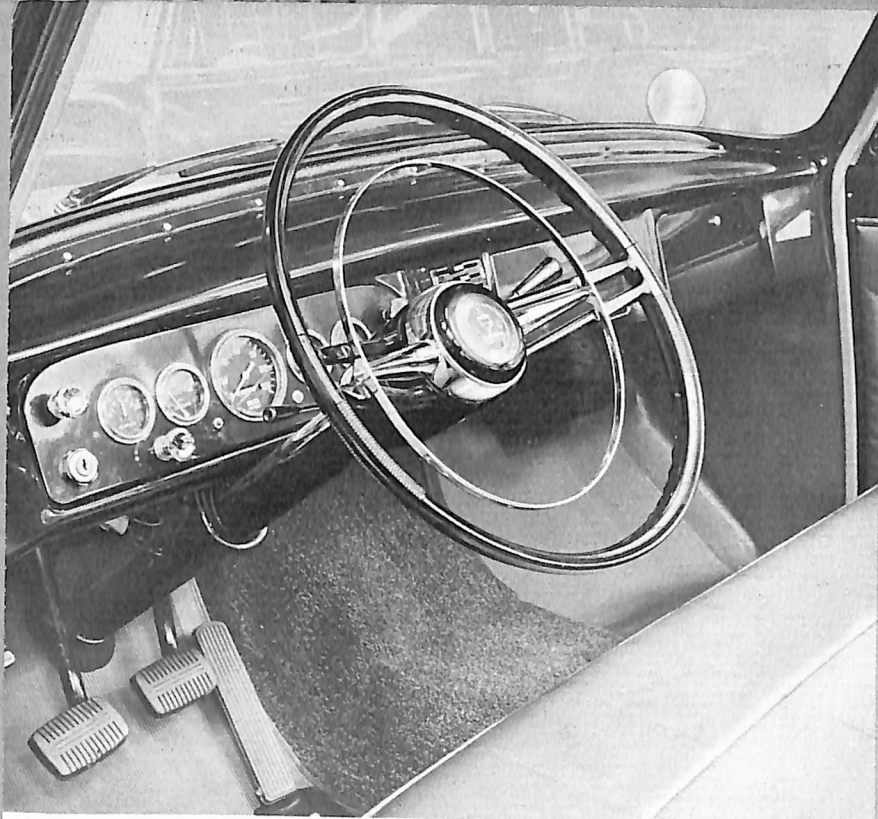


Remarkably durable, highest quality vinyl is used unsparingly throughout the handsomely designed interior of the Aerobus. Interior of door shown here is standard equipment.

Seats of deep, comfortable, foam rubber are covered with highly durable, color coordinated, scuff-resistant vinyl. Seat shown here is standard equipment.



The Aerobus luggage compartment is partitioned off from the passenger area for additional passenger comfort and load carrying convenience. Horizontal and vertical strips of stainless steel prevent damage to windows and to the luggage.



The instrument panel of the Aerobus is simplicity itself. The direct view gauges and indicators can be read at a glance. The wide view the Aerobus affords simplifies driving in heavy traffic as well as on the highways.

There's room for everybody...and everything...
in the Spacious and Comfortable **CHECKER** AEROBUS

Nine people or 12 people and all their luggage put no strain on the capacity of the spacious Aerobus. There's plenty of room for everybody, and everybody rides in real Checker comfort all the way.

The beauty of the Checker Aerobus is timeless. Although it's built for hard work, the classic simplicity of its lines is in perennial good taste.

TAXI-PROVEN

Only the Checker Aerobus offers these TAXI-PROVEN facts:

PROVEN . . . in billions of miles of taxicab operation.

PROVEN . . . over the most varied terrain.

PROVEN . . . in all climates and at widely varying temperatures.

PROVEN . . . in verified maintenance records of hundreds of taxi companies.

YOUR BEST BUY IN TRANSPORTATION IS THE TAXI-PROVEN CHECKER AEROBUS

*For additional
information write:*

CHECKER MOTORS CORPORATION
KALAMAZOO, MICHIGAN

