

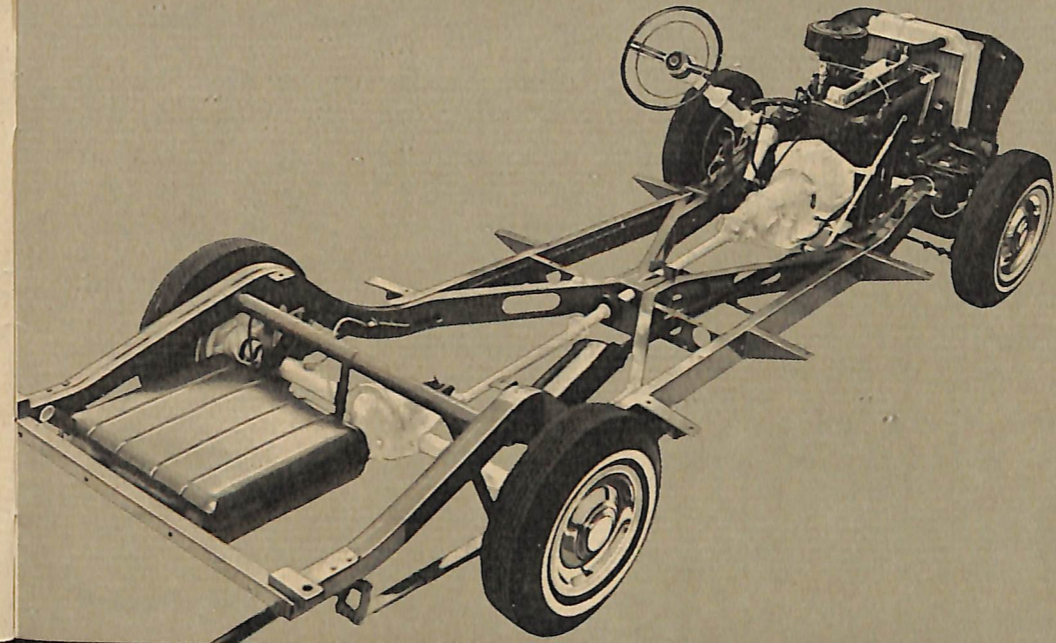


CHECKER

Marathon

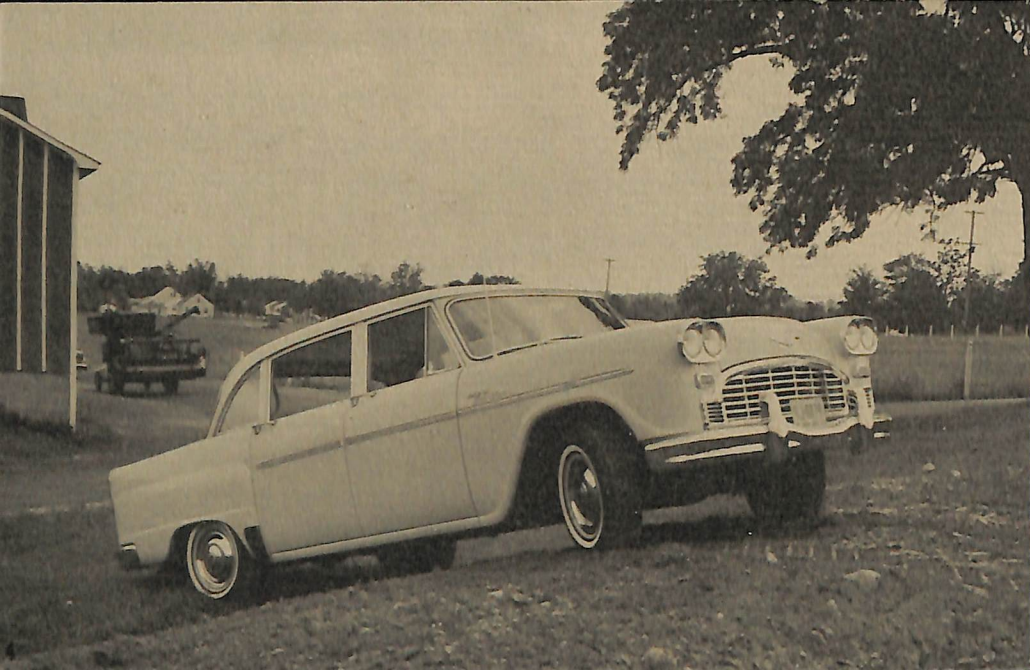
for Farm and Ranch

Created and built in Kalamazoo, Michigan, the Checker Marathon is the passenger car version of the world famous Checker taxicab. Known for its ruggedness and durability, the Checker has been proven in every part of the world, in all climates and on all types of terrain. Its 24 hour a day go-go-go taxicab background, along with its passenger car comfort and classic design, has helped the unique Checker Marathon establish an enviable record for safety, stamina and value. Available in both 4 door eight passenger sedans and the rugged station wagons; the higher, wider door openings, the flat rear floor and the built-to-last construction of the Checker Marathon makes it ideal for all around farm, ranch and field work.



Most of your farm machinery is built to last —built to withstand tremendous workloads and long hours . . . why not consider the one car that is built this same way?

This is the double channel X-brace frame —heart of the built-to-last Checker. More costly to build; more steel and more cross members—yet safer, stronger and more solid . . . just like your best equipment. Designed to cushion the most damaging shocks —created to withstand the most demanding farm chores—built to protect your automobile investment longer.



Higher road clearance and bigger 15" wheels let you wheel your Checker Marathon with ease—where roads exist and where they do not—and without fear of "bottoming out." You sit higher, too, with a safer, more commanding view of the road.

Checker has eliminated the useless overhang at both the front and rear for even greater maneuverability and driving comfort.



More interior space—more living room comfort! The Checker Marathon's unique construction allows for a perfectly flat rear floor. No transmission tunnel to rob you of legroom and headroom.

Only Checker seats 8 adults in comfort—six on full coil spring, foam cushion limousine-style seats, two more on neat auxiliary seats (optional). The higher, wider door openings let you walk in and out without head bumping; in addition, boxes and equipment that could never fit through the ordinary car doors, are put into the Checker with ease.

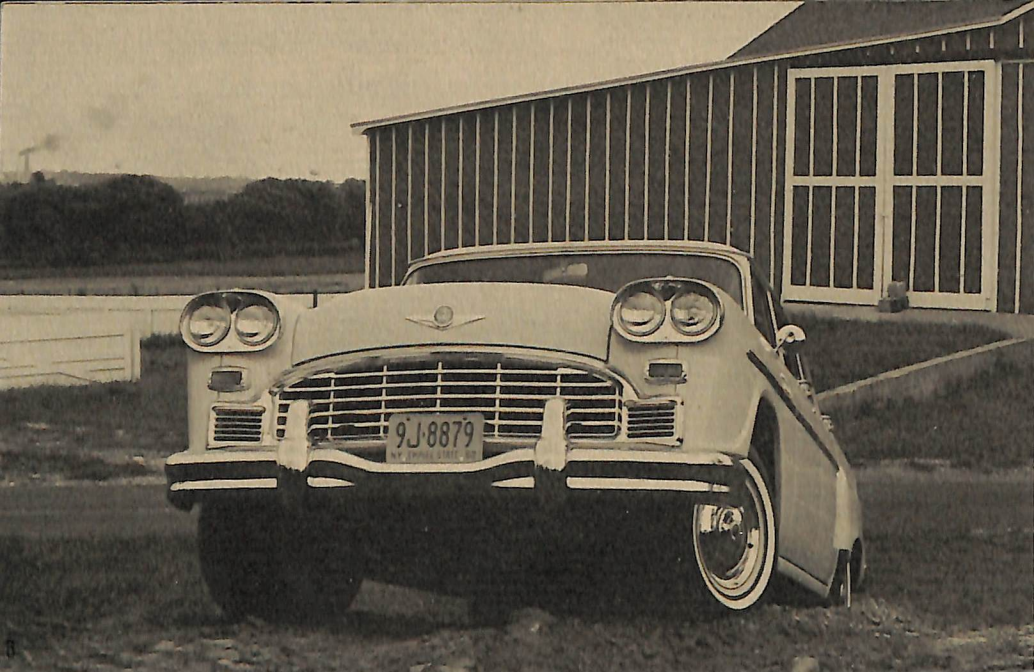


No wheel wells in the Marathon station wagon means more usable floor space—more usable air space. Rear seat flips flat; tailgate opens downward and flat, revealing over 93 cubic feet of cargo space. Floor of station wagon cargo area is solid steel covered with rugged and long wearing vinyl.

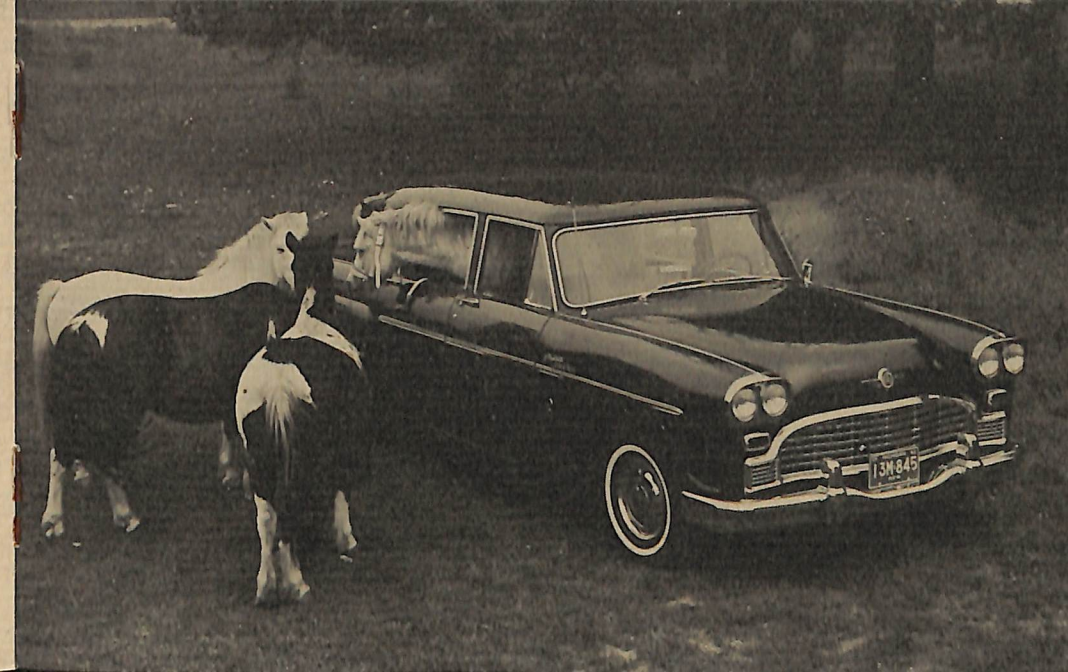
BUILD EVERY *Checker*
as though you were going
to OWN IT YOURSELF



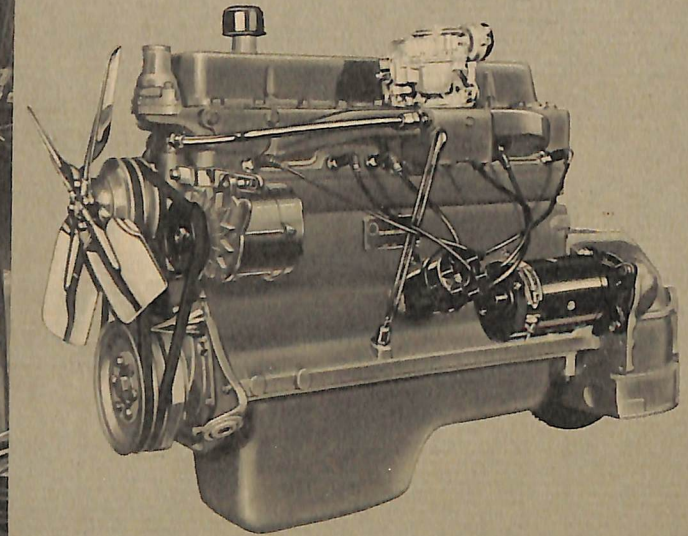
Greater strength—greater durability—greater safety. Checker's 40 years of fleet superiority in every part of the country and the world is a matter of record. The Marathon is built on the same production line, at the same time and using the same materials and skills that go into the manufacture of the world acclaimed Checker taxicabs.



Power-Lok rear axle helps produce more traction from either rear wheel when the opposite rear wheel tends to rotate at greater speeds. Positive drive feature possible by means of friction drive plates on either side of differential. Shift of driving torque from one wheel to the other is done automatically, whenever required. The Power-Lok rear axle is optional at extra cost.

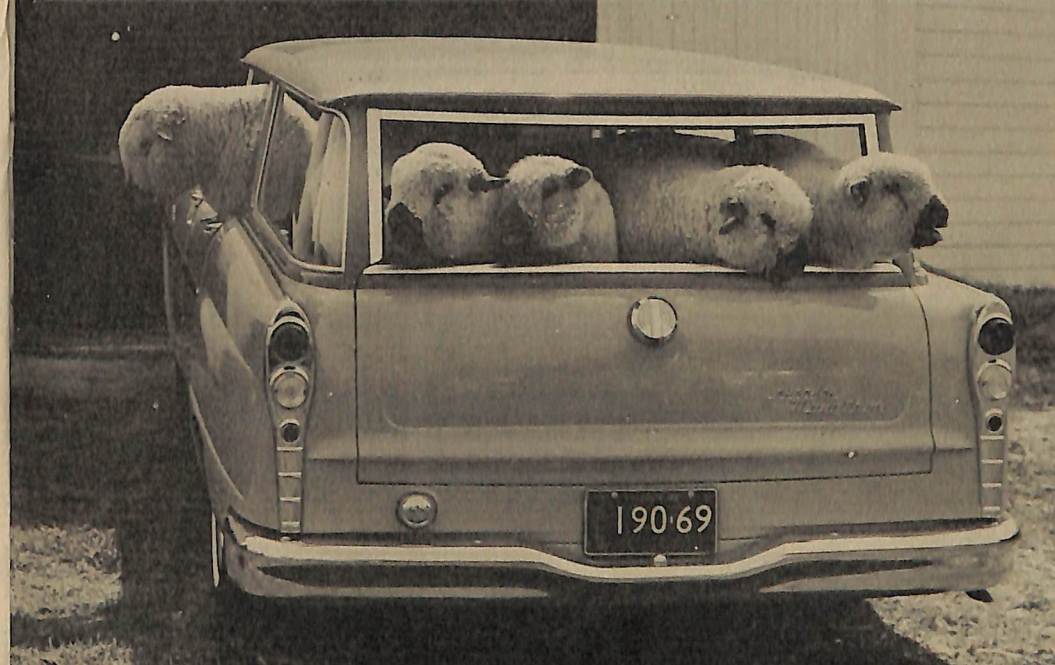


Three rugged, taxi-proven transmissions are offered: (1) Standard Warner synchromesh, (2) Driver-matic, for use with the L head engine, and the (3) Dual Range Hydramatic for use with the overhead valve engine. Full time power steering and taxi-proven power brakes are available as optional equipment.



Bolt-on fenders; easily replaced grilles and door panels; interchangeable front and rear bumpers—these are just a few of the many money saving, time saving, fleet proven Checker Marathon features. All 4 fenders can be removed and replaced in minutes without the “major surgery” needed when fender damage occurs in an ordinary car.

Top performance from regular fuel. Checker's fleet proven overhead valve engine meets all the requirements for normal power and surge and still maintains maximum fuel economy. Both the overhead valve 6 and the L head 6 cylinder engines are engineered for maximum serviceability, with fewer trips to the service shop virtually assured.

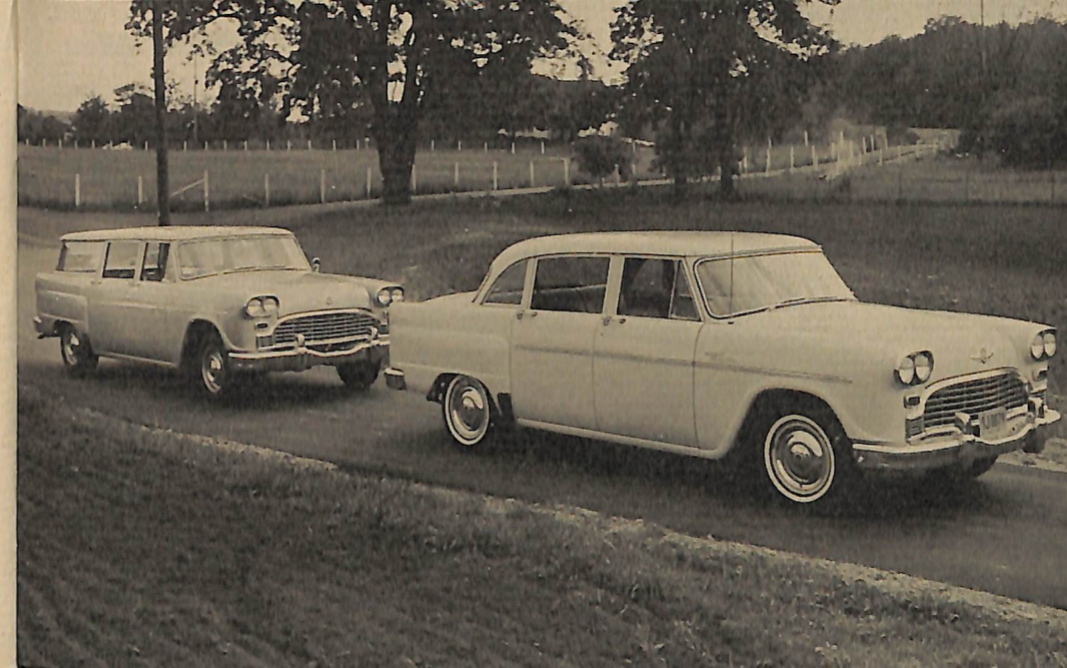


Heaviest loads carried easily, efficiently. Extra rugged, double acting shock absorbers and Checker's independent coil front suspension team up to provide the smoothest of rides—makes farm and field roads like highways. Checker's self-adjusting heavy-duty brakes provide longer life, more positive stopping power. Checker's ride and handling characteristics are further improved by the use of wide track wheels; Checker pioneered the use of this feature for better cornering and a more stable ride.

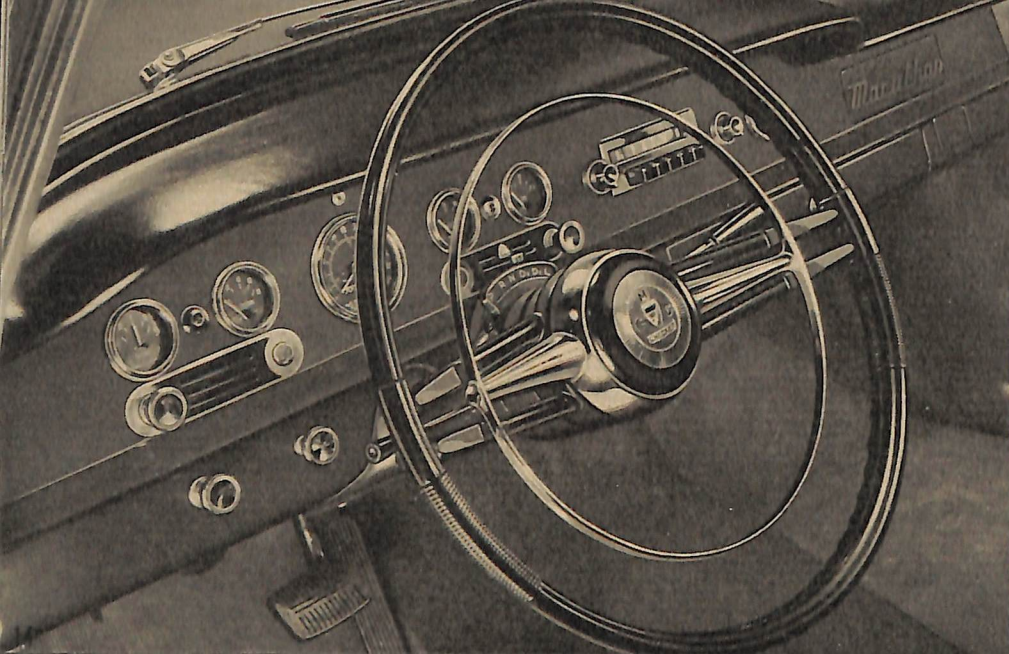


New Rust Proofing Process.

Each Checker vehicle has a zinc chromate red oxide rust inhibited primer administered to the top of the floor pans in the front, rear and trunk compartments. All detachable parts are treated with a thermo plastic sealer. A remarkable new rust preventative is carefully applied to pillars, the lower sections of all doors and in the trunk compartment. It is applied to the space below the rear quarter windows, also.



No planned obsolescence. While improvements are constantly being made on the inside of the Marathon—in better handling, greater performance and even more economy—Checker's exterior remains the same. The classic, up to date styling will always be in good taste, always appear new looking. New acrylic paints in a wide choice of colors create a sparkling finish that will remain fresh and shiny for the life of the car.



From behind the wheel of a Checker, you see a freshly styled, perfectly proportioned, safety padded instrument panel. Direct reading, fluorescent-treated circular gauges—found only in expensive sport cars—and in the Checker Marathon—are arranged for maximum visibility and maximum control. Upholstery fabrics, door interiors and carpeting are made of the most durable fabrics available, yet are color coordinated, and extremely well tailored (rear floors are available with rubber or linoleum coverings as well as carpeting).

Standard Equipment:

6 Cylinder L Head Engine
 Directional Signals
 Double-acting Shock Absorbers
 Double Channel X Brace Frame
 Dual Sun Visors
 Flat Rear Floor
 23 Gallon Gasoline Tank
 Heater and Defroster (Fresh Air Type)
 Independent Coil Front Suspension
 Long-life 10" Single Plate Clutch
 Padded Instrument Panel
 6.70 x 15 4 Ply Blackwall Tires
 Step-on Parking Brake
 Steering-
 Re-circulating Ball Type Gear Box
 Straight Synchro-mesh Transmission
 Sure-Stop Brakes
 Cigarette Lighter

Options:

Air Conditioner
 80 Amp. Battery
 Auxiliary Rear Seats
 Auxiliary Under Seat Heater
 Back-up Lights
 Car Top Luggage Carrier (Station Wagon)
 Clock (Electric)
 Closed Crankcase Ventilator
 Complete Broadcloth Interior
 Driver-Matic Transmission (With L Head Engine)
 Dual Range Transmission (With Overhead Valve Engine)
 Electric Parking Brake Signal
 Floor Shift (Standard Transmission)
 Heavy Duty Alternator (For use with Air Conditioner)
 Heavy-Duty Shock Absorbers
 Heavy-Duty Springs
 Numerous Axle Ratios
 Oil Filter

Optional Tire Sizes:

6.70 x 15, 6 ply
 7.10 x 15, 4 ply
 7.10 x 15, 6 ply

Outside Rear View Mirror
 Overdrive Transmission
 Power Brakes
 Power Front Seat
 Power-Lok Rear Axle
 Power Rear Seat (Station Wagon)
 Power Steering
 Power Windows
 Radio with Antenna
 Rear Seat Forward (Additional Trunk Space)
 Seat Belts
 Spot Lamp
 Tinted Glass
 Two-Tone Colors
 Undercoating
 Wheel Covers (Heavy Chrome)
 White Side Wall Tires
 Windshield Washer

Engine Specifications

TYPE	OVERHEAD VALVE 6 cylinder	L HEAD 6 cylinder
HORSEPOWER	141 BHP @ 4100 rpm	80 BHP @ 3100 rpm
COMPRESSION RATIO	8 to 1	7.3 to 1, 8 to 1 optional for LP gas
BORE AND STROKE	3 ⁵ / ₁₆ " x 4 ³ / ₈ "	3 ⁵ / ₁₆ " x 4 ³ / ₈ "
PISTON DISPLACEMENT	226 cu. in.	226 cu. in.
FUEL CAPACITY	23 gallons	23 gallons
RECOMMENDED FUEL	Regular	Regular
TORQUE (LB FT @ RPM)	205 lb. ft. @ 2000 rpm	180 lb. ft. @ 1400 rpm



CHECKER MARATHON



CHECKER TAXICAB



CHECKER AEROBUS



CHECKER CUSTOM LIMOUSINE



Checker Motors Corporation

KALAMAZOO, MICHIGAN

Manufacturers of Built to Last Vehicles for over 40 years