

AEROBUS

by Checker Motors



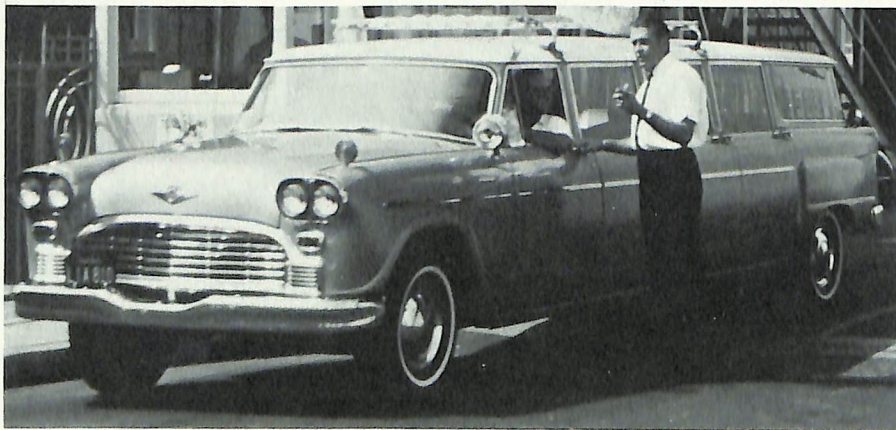
CHECKER AEROBUS

It's a limousine! It's a station wagon!

It's a long, long family car! It's the Checker Aerobus!



ABOUT CHECKER MOTORS...



Checker Motors Corporation has been building taxicabs and special-purpose vehicles for world-wide fleets for nearly 50 years. Checker's knowledge of fleet operations and fleet owner requirements in this highly specialized area is second to none.

The Checker Aerobus is built at the sprawling modern Checker plant in Kalamazoo, Michigan. A special Aerobus manufacturing facility practically custom-builds every unit to the fleet operator's exacting specifications.

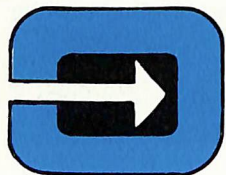
We believe each and every Checker employee treats his job responsibility as a craft; each production worker, inspector, draftsman, engineer, model maker reflects the tradition of fine quality workmanship and pride of accomplishment that has helped build our world-wide reputation for excellence.

We are proud of our Checker employees, products and facilities; we believe you will recognize this pride in the quality of every Checker Aerobus.

THE AEROBUS...

a new concept in

**SAFETY
STABILITY
SECURITY**



Here is a vehicle unique in all the world. Not a "stretch-out"—not a converted stock car, but the world's first and only 12-passenger limousine built from the ground up specifically for the purpose!

Fleet operators asked us to build the Aerobus. They requested a vehicle to move people with the greatest degree of comfort at a low, low cost. They asked for plenty of cargo room, for the big, wide, walk-in doors made famous by the Checker cab; they wanted flat floors and taxicab-style legroom and headroom. And they asked for safety; school-bus safety. They wanted a vehicle to deliver the level of security and stability not possible with stock car "stretch-outs" or mini-bus-type carriers.

And Checker came through. The result is the Checker Aerobus. The result is more features—more value—more payload per running foot of car than any passenger car or limousine on the market!

More room for luggage and equipment. More power. More style. More comfort. It's true; the Checker Aerobus offers more convenience, comfort and economy features than vehicles costing thousands of dollars more.

The Checker Aerobus has been proven under the most adverse driving conditions. The Aerobus has been proven under the heaviest loads, the worst weather, the roughest, toughest, go-go-go, 24-hours-a-day, 7-days-a-week pace of the busiest fleets in the world. No other vehicle measures up to the proven stamina, dependability and economy of the Aerobus. No other vehicle delivers the comfort, convenience and passenger satisfaction of the Aerobus.

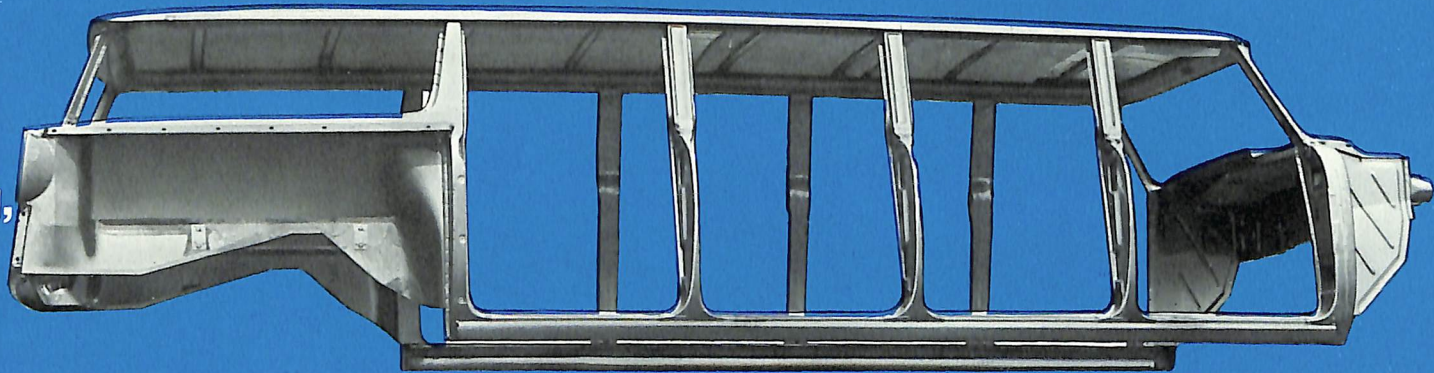
No other vehicle is built like the Checker Aerobus.

Only the Checker Aerobus has the strongest chassis to accommodate the fleet operator's most demanding requirements. No chance of bowed door frames or sagging floors! Only the Checker Aerobus is built to withstand the roughest, toughest road shocks. Only the Checker Aerobus is built to take it—sturdy and strong enough to hit road holes at cruising speeds and fully loaded, without discomfort to passengers—without damage to the heavy-duty suspension system—without driver worry or concern!

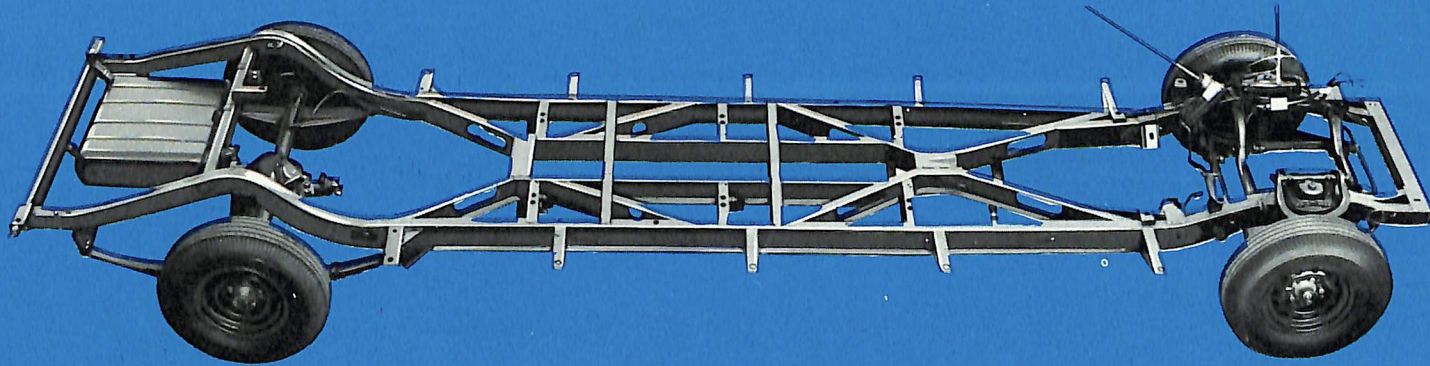
The super-strong, super-safe double channel double X-brace frame is the backbone of Checker's built-to-last ruggedness. Extra cross-members, extra steel, extra strength and extra care go into the building of every Checker Aerobus... engineered to help the operator provide a safer, more satisfying service. No other commercial vehicle... no "stretch-out" or converted stock car... can deliver this kind of superior frame—this kind of strength and security.

Built from the ground up to take it! Only the Checker is built-for-the-purpose, with fenders that can be replaced and an easily removed and replaced grille. And only Checker offers fleet-oriented, fleet-proven features including heavy, long-wearing upholstery fabrics, tough, washable floors and door panels that can be quickly replaced. Expect extra passenger miles with proven economy; expect only the finest performance and stability, outstanding comfort and stamina.

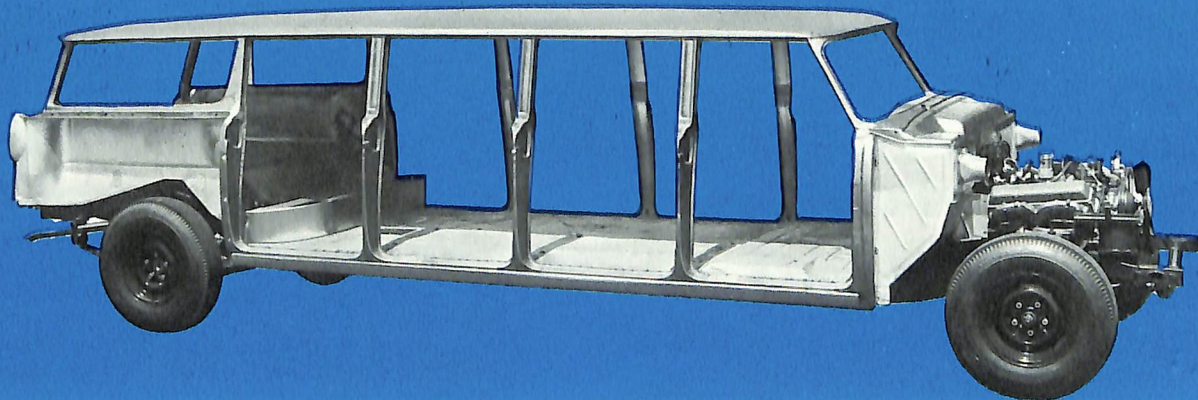
**Only Checker
gives you
this super-strong,
super-safe
foundation.**



**Only Checker
gives you
this super-safe,
super-sturdy
frame.**



**Only Checker
gives you
this built-to-last
vehicle of
amazing stamina
and comfort.**





HECKER AEROBUS 12 by Checker Motors

custom-built Checker Aerobus 12-passenger limo is being used by hundreds of transportation firms, colleges, schools, resorts, hospitals, and service companies to move their passengers quickly, safely, comfortably and inexpensively. From roof to road and from bumper to bumper, the Aerobus offers more value and more satisfac-

tion—more usable interior space—than any other multi-passenger vehicle. Supported by a super-safe, super-strong double channel double X-brace frame, the Checker Aerobus is built solidly, ruggedly and with a feeling of permanence and safety found only in Checker products. The specially designed heavy-duty shocks and super-strong

resilient springs assure a rattle-free body and a more comfortable ride. The entire Checker Aerobus suspension system was engineered and built for passenger comfort and long life. A huge 185 hp, 327 cu. in. V-8 power plant is standard on all Checker Aerobuses with all the torque and passing power needed under *all* driving conditions.

Heavy-duty automatic or 4-speed floor shift transmissions are available as optional equipment. Power steering, dual brake system and power brakes are standard equipment and included without extra cost. The over-all length of the Checker 12-passenger Aerobus is 270 inches, yet the wheelbase is only 189 inches.

Checker has eliminated the useless overhang in both front and rear and the result is greater maneuverability, greater road clearance, better control and increased driving ease. The flat floors and the higher, wider door openings . . . the extra-high roof line and wide, wide seats mean more

passenger comfort . . . greater passenger satisfaction. All in all, the Checker 12-passenger, 8-door Aerobus represents an outstanding vehicle with which no "stretch-out" mini-bus or converted stock car can compete . . . it's "all car" . . . built to last and built to keep its value longer.

STANDARD EQUIPMENT FOR CHECKER AEROBUS

- Heavy Duty 3-Speed Standard Transmission
- 327 cu. in. V-8 Engine; 185 h.p.
- 23-gal. Capacity Fuel Tank
- Self Adjusting Power Brakes
- Power Steering with Re-circulating Ball Steering Gear
- Heavy Duty Alternator
- 80-Amp. Battery
- Heater & Defroster
- 2 Floor Mounted Auxiliary Heaters
- Back-Up Lights
- Parking Brake Warning Light
- Windshield Washer
- Electric Windshield Wipers (2-Speed)
- 2 Outside Mirrors

- Undercoating
- Heavy Duty Clutch
- Heavy Duty 15x6 $\frac{1}{2}$ L Wheels with 5 $\frac{1}{2}$ " Bolt Circle
- Tires: 8.20x15 8-ply rated
- Front and Rear Service Brakes are 11"x3"
- Brake Master Cylinder 1.000" Bore
- Heavy Duty Prop Shaft
- All Universal Joints Equipped with Lube Fittings
- Heavy Duty Rear Axle
- Heavy Duty Double Channel Double X-Brace Frame with Reinforcing Girders and Beams
- Front Stabilizer Bar
- Heavy Duty Shock Absorbers
- Heavy Duty Front Suspension

- 6-Door Units have Heavy Duty 2 $\frac{1}{2}$ " Wide 6-leaf Rear Springs
- 8-Door Units have Heavy Duty 2 $\frac{1}{2}$ " Wide 9-leaf Rear Springs
- Heavy Duty Forged Steering Spindle

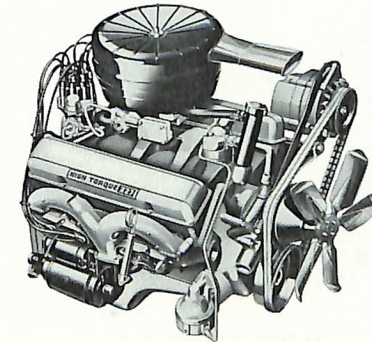
Optional Equipment

Power-Lok Axle • Deluxe Side-View Mirrors • Plexiglass Baggage Partition • 2 Tone Paint • Air Conditioning • Tinted Glass • Roof Luggage Carrier • Dual Range Automatic Transmission • Window Grille Guard • 4 Speed Manual Floor Shift Transmission • Music Radio • Roof Marker & Identification Lamps • Class A Turn Signal Lamps

Specifications subject to change without notice.

SPECIFICATIONS

	9 Passenger	12 Passenger
Wheelbase	154.5"	189"
Over-all Length	235.25"	269.75"
Over-all Width	76"	76"
Over-all Height	64.37"	64.37"
Curb Weight	4670 lbs.	5305 lbs.
Cargo Volume	40 cu. ft.	40 cu. ft.
Front Headroom	36"	36"
Bottom of Doors to Ground (Loaded)	12.05"	12.05"
Ramp Breakover Angle	12.5°	10.5°
Angle of Approach	18°	18°
Angle of Departure	17°	17°
Road Clearance at Rear Axle	7.8"	7.8"
Overhang, Front	34"	34"
Overhang, Rear	46.75"	46.75"
Rear Seats, Hiproom	64"	64"
Windshield Width	58"	58"
Back Window Width	45.25"	45.25"
Turning Diameter (Curb to curb)	47'3"	56'6"



AEROBUS ENGINE SPECIFICATIONS

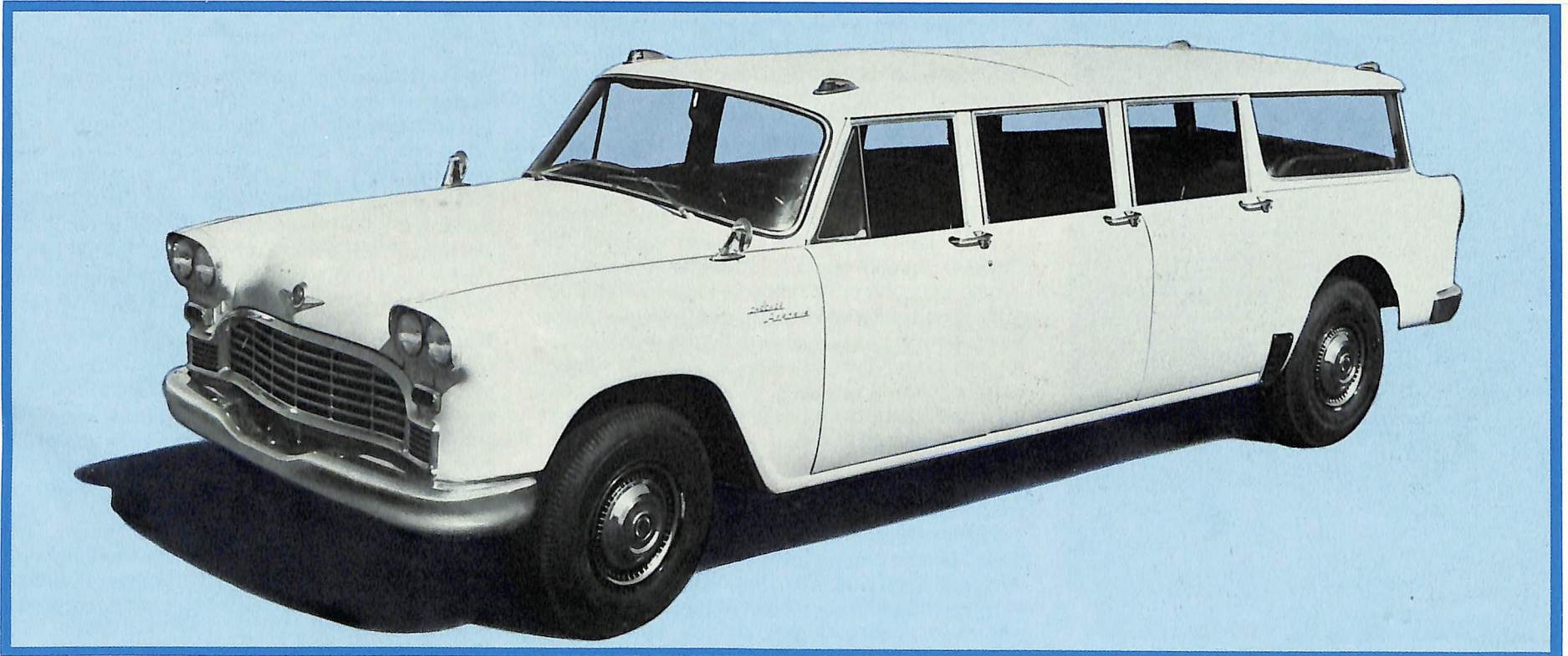
Type: V-8 / Horsepower: 185 @ 4400 RPM /
 Torque: 305 ft. lbs. @ 2000 RPM / Piston
 Displacement: 327 cu. in. / Compression Ratio:
 8.00:1 / Piston Firing Order: 1-8-4-3-6-5-7-2 /
 Fuel: Regular

CHECKER AEROBUS 9

by Checker Motors

The Checker 6-door, 9-passenger Aerobus, like its 12-passenger counterpart, is practically custom-built, using all the skills, materials and craftsmen responsible for the world-famous, built-to-last Checker commercial vehicles for nearly half-a-century. Extra time, extra money and extra materials go into the manufacture of every Checker Aerobus—and the end result is a safer, more comfortable, longer lasting (and more economical!) vehicle. Super-resilient elliptical springs and special heavy-duty shocks and suspension system team up with big, wide foam seats (extra deep and extra thick!). Checker's famous flat floors and the high, wide and straight door openings for easy entry and exit make it the most comfortable limousine ever built. The tremendous cargo area, situated behind the passengers, accommodates over a dozen pieces of large luggage plus dozens of smaller parcels. The classic styling and built-to-last ruggedness of the Checker Aerobus makes more sense, the

longer you own one; Checker's unique combination of comfort, economy and convenience makes more good sense to passengers. The overall length of the 6-door Aerobus is 236 inches, yet, due to Checker's "less overhang, more usable space" construction, the wheelbase is a short 154½ inches. The powerful 185 hp, 327 cu. in. V-8 engine, along with full-time power steering, dual brake system and power brakes, is standard equipment. As in all Checker vehicles, the driver sits higher—has a more commanding and safer view of the road. Fenders and doors are quickly, easily and inexpensively removed and replaced, and Checker's world-wide reputation for low-cost upkeep is further enhanced by the Aerobus's "proof-positive" rustproofing process. If your need is to move nine people or less, with luggage, equipment or packages, quickly, efficiently and economically, the 6-door Checker Aerobus is the perfect answer.





The interior of the Aerobus was built for passenger comfort as well as fleet durability. The heavily-padded doors are upholstered in matching heavy-duty vinyl. The superior sound-absorbing ceiling is reinforced with strips of corrugated stainless steel adding to the over-all appearance and long life. Flat floors in all passenger areas are covered with an easily-cleaned, extra-tough floor covering, expressly made for the increased traffic the Aerobus will withstand.

The Aerobus is powered by a high-spirited V-8 engine, designed and built for every driving situation—expressway, mountain, stop-and-go city traffic, country and ranch. With all its power and response, the Aerobus engine is an economy marvel—with extra mileage and extremely good gas mileage being recorded every day by Aerobus owners, even under complete load conditions.

The huge Aerobus luggage compartment, with room enough for a dozen or more pieces of large luggage plus many other parcels, can be partitioned off from the passenger area with plexiglass (optional). Horizontal and vertical strips of chrome plated copper (optional) prevent damage to windows and to the luggage.

The Double Channel Double X-Brace Frame . . . The Backbone of a Checker Vehicle. The Checker double channel double X-brace frame is built to cushion the most damaging shocks and outlast any other frame. Checker's frame utilizes three tubular and two channel cross members . . . for the operator this means a "doubly rugged, doubly rigid, doubly safe" construction. The body is bolted to the frame creating an even stronger and more durable unit.

Body. No structural weaknesses or "midsection buckling" due to welding, as is found on so-called "stretch out" vehicles. The Checker Aerobus is built from the ground up as a multi-passenger car. Any wheel may be jacked up without interfering with opening of doors or without fear of body distortion.



Grille. Ruggedly constructed, the grille is a functional, well-integrated unit. Easily removed, repaired and replaced without disturbing other parts.

Fenders. Sculpture rib construction increases the strength and rigidity of the fenders. All four fenders are easily removable in minutes. Practical, two-piece construction allows removal of entire fender or just outer half without disturbing the other parts. Repairs are cheaper, easier. Fenders bolt on securely all around.

Front and Rear Bumpers. Maximum protection is offered to fenders, head and tail lamps. Both bumpers are heavily chrome plated to resist wear and maintain their sparkling appearance.

Wheels and Tires. Checker pioneered the use of the wide track. Wheels are steel with heavy-duty 15 x 6½L rims. Bigger, 15" wheels mean larger brakes, more brake lining area and longer life to brakes and tires.

Heater. Cowl-mounted heater with centrifugal blower is exceptionally efficient. Underseat heaters (standard equipment) distribute abundant heat to front and rear compartments, even in coldest weather. Fresh air is introduced through air intakes. Rapid, continuing and more thorough defrosting is provided by a windshield defroster that operates through the cowl-mounted heater. It runs the full width of the windshield, spreading an even blast of hot air across the entire windshield area.

Rustproofing. Checker has put "proof" into rustproofing by creating a remarkable new process to insure even longer life from your Aerobus. A new rust preventative substance is applied under pressure to all rust-susceptible areas. The new process has been tested and proven in hundreds of tests under all kinds of climate and weather conditions.

Air Conditioner. Heavy-duty air conditioning system provides perfect cool, dry, draft-free air, evenly distributed throughout passenger areas. Air conditioning and tinted glass are optional features.

Doors and Windows. Doors are of two-piece construction, permitting easy removal of door panels or window panes and frames for repair. Door posts and rear doors have reinforced design for greater structural rigidity and longer life. Body is shimmed and tightened on frame before doors are hung. Hinge arrangement allows wider opening for passenger entrance and exit. Window frames are aluminum to resist rust and corrosion. Door hinges are equipped with a built-in door check and hold-open device for extra safety.

Seats. Both front and rear seats are fully foam padded; deep coil spring construction for a smooth, comfortable ride. Upholstery is scuff-resistant, washable vinyl. Driver's seat has a manually-operated mechanism which permits a selection of front seat positions for maximum comfort.

The Electrical System. Checker's 12-volt electrical system, including a high-efficiency, heavy-duty alternator, is engineered for constant voltage at all speeds, more dependable ignition performance in cold weather, and more than ample power for all equipment. The entire ignition system is waterproofed, insulated and protected by circuit breakers.

Propeller Shaft. Propeller shaft has intermediate bearings to eliminate "whip" and vibration, allow for flat floor convenience. Bearings are mounted in rubber at frame's X member for quieter operation.

Clutch. Extra rugged, single plate 11" clutch. Facings are a special heavy-duty woven asbestos with spiral-inserted copper wire on spring-cushioned type driven member.

Transmission. Synchronous meshing between 2nd and 3rd gears eliminates clash and grind. Extra large bearings for long service. Helical gears and synchro-mesh for second and high. Spur gears for first and reverse.

Oiling System. Full pressure feed to all main connecting rods and camshaft bearings, as well as tappets and timing gears. Minimum pressure of 20 PSI @ 375 rpm.

Instrument Panel. The entire panel is welded into the body for maximum strength. Mounted on a removable sub-panel for easier service. Direct-reading, calibrated gauges are integrated in simple, classic arrangement.

Windshield and Wipers. Large, distortion-free, semi-wrap-around windshield gives an unobstructed view for safer driving. Windshield wipers are electrically driven. Direct drive by rods without cables.

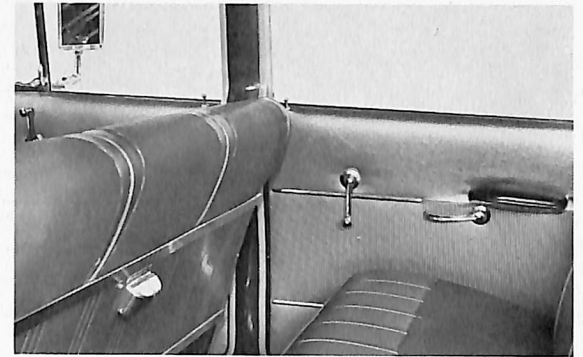
The Fuel System. Diaphragm type mechanical fuel pump features a vacuum booster. Cadmium plated baffle and air scoop prevent vapor lock. Two barrel carburetor has manual choke, dry-type air cleaner. Fuel tank has 23-gallon capacity.

Perfectly Balanced Cooling System. Spring pressure of 13 pounds is applied against the radiator cap. Oil temperature control is uniform and maintained by full-length water jacketing in the cylinder block. Cylinder expansion is minimum and moving parts are subjected to less heat. Centrifugal water pump is V-belt driven. Radiator is fin and tube type.

Rear Axle. The semi-floating rear axle has differentials employing a hypoid ring gear and pinion. Excellent stability and traction. Axle shafts 1 1/4" dia. Axle tube 2 3/4" dia. Spring seats 49 1/2" centers. Standard transmission ratio 4.10:1. Power-Lok axle optional.

Power Brakes. Self-contained vacuum suspended, direct coupled Master-Vac brakes are standard equipment. In case of power failure, reserve tank provides 2 to 3 power assisted brake applications after engine is stopped. Thereafter, brakes are controlled hydraulically through the foot pedal.

Power Steering. Standard equipment. Unit operates in conjunction with steering gear. (Power for operation is supplied by belt-driven hydraulic pump.) Full functioning whenever engine is operating, but allows adequate road "feel." In event of power failure, steering reverts to manual operation.



THE CHECKER FAMILY OF FINE CARS

Checker Motors Corporation

Kalamazoo, Michigan 49007

**Checker Marathon
Sedan**



**Checker Marathon
Station Wagon**



**Checker Marathon
Limousine**



Checker Taxicab

