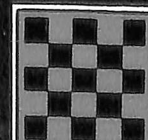


# CHECKER



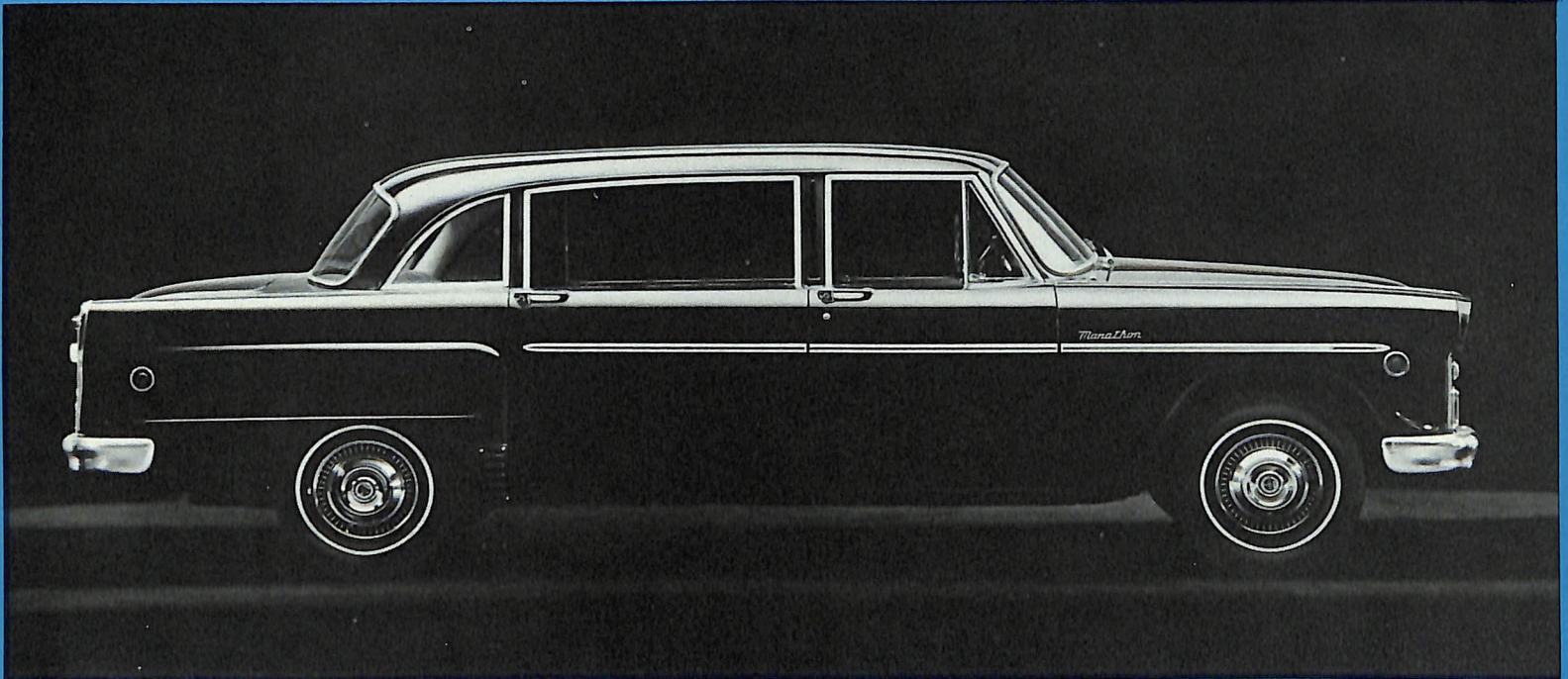
Today's Checker is the result of nearly half-a-century of building fine cars for fleet use. Based on the proven concept that Checkers perform longer, more economically and without compromise, this complete line of wholly practical and functional motor cars is being offered into world markets. At Checker, modern styling

is not tied to short-lived fads or fashions. At Checker, cars are engineered, designed and built to satisfy the needs of the family, the business, the institution—the individual who respects safety, long life and economy. Today's Checker is built to give owners maximum comfort and maximum value over the longest period of time.





# Checker Marathon Deluxe A-12E 9-Passenger/4-Door Sedan



# Checker A-11E 9-Passenger/4-Door Sedan





Especially engineered and built for the world markets, the Checker Marathon Deluxe has achieved new heights in elegance, craftsmanship and performance. The classic European-influenced styling and highly functional body lines remain in style year after year reflecting Checker's long-standing policy of non-obsolescence. Built on a 129" wheelbase, the Marathon Deluxe offers incomparable smoothness and riding comfort; interior

room and luxury appointments that you would expect to find only in cars costing thousands of dollars more. With the luxurious, forward-facing, three passenger twin auxiliary seats, there is room for nine adults, with an abundance of headroom, hiproom and legroom. Extra-high, wide door openings for easy entry and exit, a rear floor that is practically flat and deep-cushion, chair-high seats provide that extra measure of comfort and convenience

that is found only in a Checker. A custom-built sliding glass driver's partition is optional at extra cost. Checker has eliminated the useless overhang in both front and rear to provide greater maneuverability and a shorter turning radius; the exclusive double channel X-brace frame, the fleet-proven parts—the extra quality and extra care that go into each Checker vehicle mean a safer car—a longer lasting car—a better value for the buyer.

## Model A-12E/4-Door Model A-11E/4-Door Specifications

### 155 H.P., 250 cu. in. OVERHEAD VALVE SIX ENGINE.

Type: 6 Cylinder Overhead Valve • Horsepower: 155 BHP @ 4200 rpm • Compression Ratio: 8.5 to 1 • Piston Displacement: 250 cu. in. • Carburetor: Downdraft, with automatic choke • Recommended Fuel: Regular • Cooling System: 12 qts. with heater

- DUAL BRAKE SYSTEM.
- OIL FILTER.
- WINDSHIELD WASHER.
- Re-circulating Ball-type STEERING.
- DOUBLE CHANNEL X-BRACE FRAME.
- INDEPENDENT COIL FRONT SUSPENSION SYSTEM.
- HEATER-DEFROSTER, part of Checker's all-season heating and ventilating system.
- DUAL-RANGE AUTOMATIC TRANSMISSION.
- SIDE MARKER LIGHTS—front and rear.
- Anti-theft style STEERING COLUMN.
- Wide, easy riding, heavy-duty REAR SPRINGS.
- PRACTICAL TWO PIECE FENDERS—allow for fast and inexpensive removal and replacement.
- G78 x 15 BIAS BELTED 4 PLY RATED TIRES
- 23-GALLON FUEL TANK.
- UNDERCOATING. (Optional A-11E)
- DIRECTION AND LANE CHANGING SIGNALS.
- SAFETY PADDED DASHBOARD.
- CIRCULAR DIRECT READING INSTRUMENT GAUGES.
- CHAIR-HIGH SEATS for extra comfort.
- HEAVY-DUTY PARTS THROUGHOUT.
- BACK-UP LIGHTS.
- OUTSIDE MIRROR.
- WINDSHIELD WASHER.

### MEASUREMENTS (in inches unless otherwise indicated)

Wheelbase	129
Over-all Length	209.33
Over-all Width	76
Over-all Height	62 1/4
Shipping Weight	3,700 lbs.
Front Headroom	34.75
Bottom of Doors to Ground (Loaded)	11.75
Ramp Breakover Angle	15°
Angle of Approach	23°
Angle of Departure	15°
Minimum Road Clearance at Rear Axle	7.50 at diff.
Legroom, Front	42
Legroom, Rear	57
Front Seat Height	14
Rear Seat Height	13
Auxiliary Seat Height	13
Auxiliary Seats Over-all Width	52
Overhang, Front	32.75
Overhang, Rear	46.75
Front Hiproom	62.25
Rear Hiproom	52.50
Windshield Width	58
Back Window Width	58.87

### Optional Power and Convenience Accessories (available at extra cost)

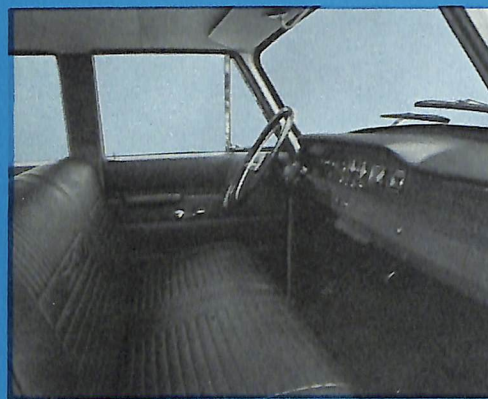
Type:	8 Cylinder Overhead Valve (V-8)
Horsepower:	240 BHP @ 4800 rpm
Compression Ratio:	8.5 to 1
Piston Displacement:	350 cu. in.
Carburetor:	Downdraft, 2 barrel, with automatic choke
Recommended Fuel:	Regular
Cooling System:	17 qts. with heater

### Optional Engine 350 cu. in.

**AUXILIARY SEATS** enable three additional people to ride in complete comfort. Newly designed, wider seats (52" over-all width with folding supports) are shoulder high and face forward, yet provide adequate legroom for all passengers.

**AIR CONDITIONING** comfortably cools and filters all the air. Quickly cools, ventilates, dehumidifies and removes dust, dirt and pollen.

**SEPARATE UNDER SEAT HEATER • POWER DISC BRAKES IN FRONT AND POWER BRAKES IN REAR • POWER BRAKES IN FRONT AND REAR • RADIO AND ANTENNA • TINTED GLASS • PARKING BRAKE SIGNAL • DELUXE CHROME WHEEL COVERS • CHROME HAND RAIL • ELECTRIC CLOCK • HEAVY DUTY SHOCK ABSORBERS • HELPER SPRINGS • 8-PLY RATED TIRES • WHITE SIDEWALL TIRES • KILOMETRIC SPEEDOMETER • CHROME FOOT RAIL.**



In front of the beautiful padded dashboard is an economy-proved overhead valve six cylinder engine with 250 cubic inch engine displacement. Also available: the regular gas (low octane) 350 cubic inch V-8, ideal for all-around performance and economy.



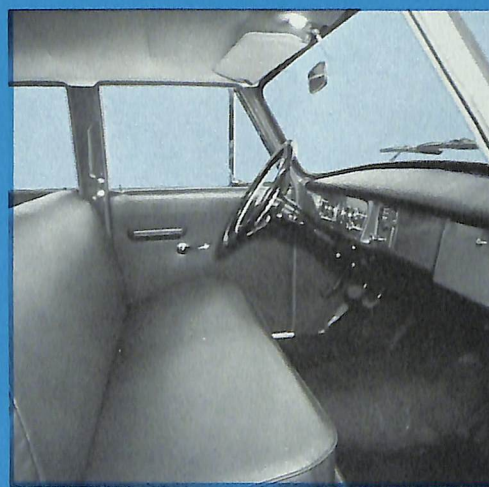
The richly appointed interior of the Checker Marathon Deluxe includes sculptured foam cushions over full coil springs, carefully upholstered with elegant yet highly durable fabrics. Added touches of comfort and luxury include new soft headlining and attractive, long-wearing carpeting. A custom-built sliding glass driver's partition is optional at extra cost.



The twin, forward facing auxiliary seats form one complete seat and provide adequate room for three adults with limousine comfort. Extra-wide (132.08 cm. —52 inch), with folding supports, the auxiliary seats are fully cushioned with sturdy, shoulder-high backs. When not in use, they fold flat against the back of the front seat and their base support forms a footrest for back seat passengers. Upholstered in a wide choice of long-wearing luxurious fabrics.

Also built on the longer 129-inch wheelbase, the Checker A-11E carries nine people in utmost safety and comfort at lowest cost. Features include the doubly rugged, double channel X-brace frame; style continuity that lasts year after year; higher, wider door openings for easiest entry and exit; a rear floor that is practically flat; and the extra-care, extra-quality Checker construction that has been proven in billions of miles of rugged fleet operations.

The Checker model A-11E includes sculptured foam cushions and full coil springs, carefully upholstered with highly durable fabrics. Big, square, extra-wide auxiliary seats . . . wide enough for three extra persons, fold neatly away when not in use.

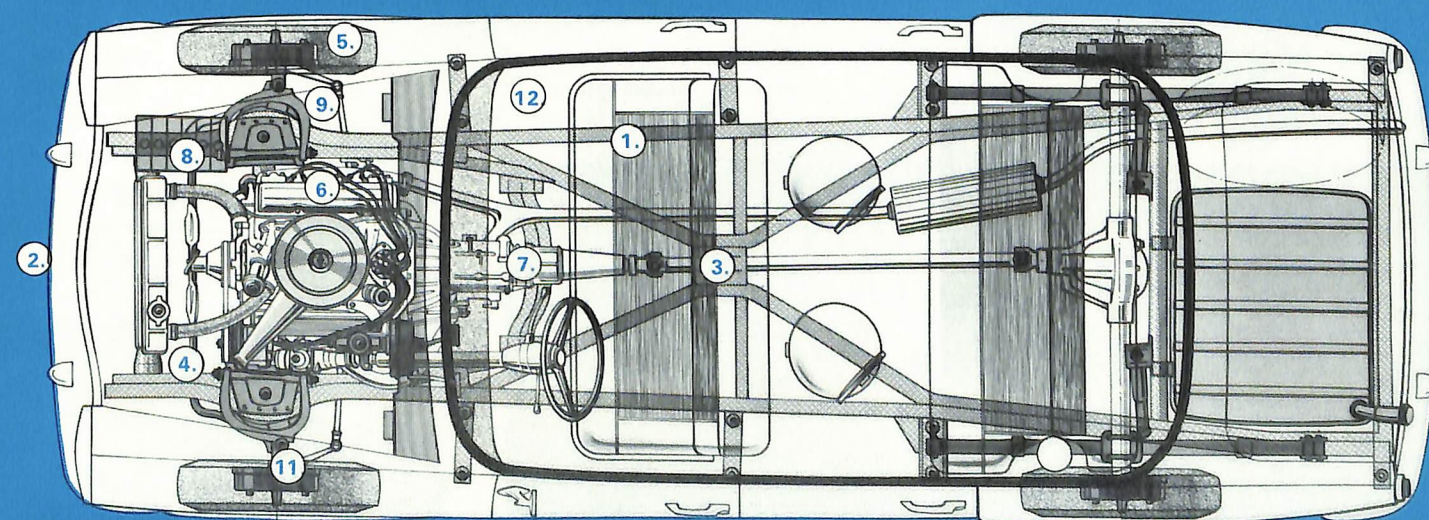


Big, circular easy-to-read gauges and instruments highlight Checker's "common sense" approach to dashboards. Checker's exclusive driver-seat height means a safer, more commanding view of the road.



More room inside! Only Checker offers passenger compartments large enough to accommodate three additional people. Floors are virtually flat—no space robbing protrusions for the drive shaft. More legroom, headroom and hiproom—Checker exclusives!

## Checker Chassis Features:



1. Balanced chassis—built stronger, built better—built to give an extra measure of safety, long life and security.
2. Less than 17 feet long—a foot shorter than most other cars! No useless overhang; no unused space means a roomier interior.
3. Super-strong, double channel X-brace frame—for greater strength, stability, safety.
4. Wide track design combined with front stabilizer bar means greater stability, better roadability, easier handling.
5. 15" wheels mean better road clearance, longer tire life.
6. 2 engines—standard 155 h.p. overhead valve six optional 240 h.p. economy V-8.
7. Automatic transmission—fleet-proven for trouble-free operation.
8. Dependable heavy-duty, fleet-proven parts, designed for longer life, better performance.
9. Independent heavy-duty coil front suspension system gives smoother ride.
10. Five-leaf semi-elliptical springs—wider, more resilient than most other springs.
11. Brakes are fleet-proven for sure, safe stopping power.
12. Greater windshield area in front and rear means greater visibility.

8. Dependable heavy-duty, fleet-proven parts, designed for longer life, better performance.

9. Independent heavy-duty coil front suspension system gives smoother ride.

10. Five-leaf semi-elliptical springs—wider, more resilient than most other springs.

11. Brakes are fleet-proven for sure, safe stopping power.

12. Greater windshield area in front and rear means greater visibility.

1. Balanced chassis—built stronger, built better—built to give an extra measure of safety, long life and security.

2. Less than 17 feet long—a foot shorter than most other cars! No useless overhang; no unused space means a roomier interior.

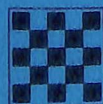
3. Super-strong, double channel X-brace frame—for greater strength, stability, safety.

4. Wide track design combined with front stabilizer bar means greater stability, better roadability, easier handling.

5. 15" wheels mean better road clearance, longer tire life.

6. 2 engines—standard 155 h.p. overhead valve six optional 240 h.p. economy V-8.

7. Automatic transmission—fleet-proven for trouble-free operation.





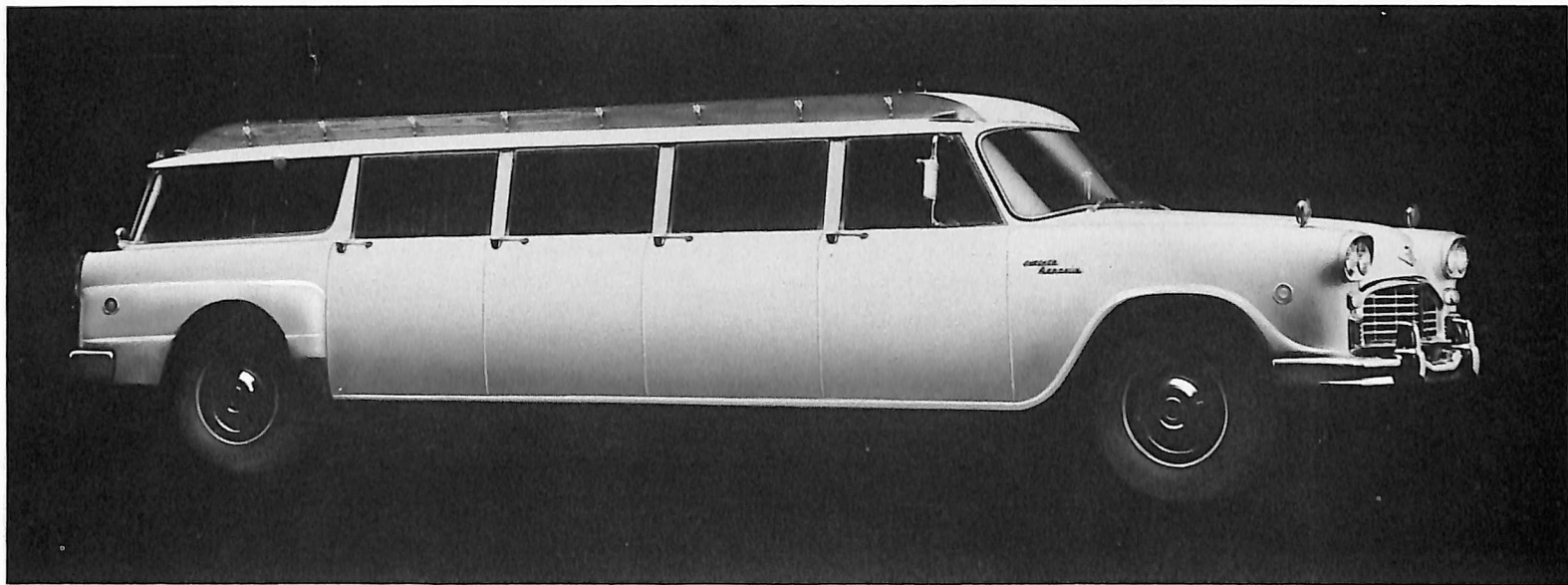
# The Checker Aerobus Limousine

## Checker 12-Passenger 8-Door Aerobus

Model A-12W8M Built from the ground up on a super-strong, super-safe foundation, the Checker Aerobus features a double channel double X-brace frame—engineered for extra strength and extra comfort. With room for 12 passengers and their luggage, it's the perfect answer

where a station wagon is too small and a bus is too large!

The wheelbase is 189 in., with the overall length 270 $\frac{1}{4}$  in., yet it handles as easily as a standard size sedan. Floors are virtually flat and the higher, wider door openings assure maximum passenger comfort. Maintenance and repair costs are remarkably low, assuring fleet operators years of economical payload operations.



## The Checker Aerobus Limousine; ideal for hotels, schools, industry and institutions.



It's the "people-mover"! Used by hotels, motels, resorts, colleges, businesses, transportation companies, hospitals . . . wherever maximum passenger comfort and operating economy are essential.



# Checker, The World's Leading Taxicab

**CHECKER Model A-11** The most popular taxicab . . . the world's only *real* taxicab . . . designed and built for the utmost in driver and passenger comfort, as well as profitable operation. Driver controls are sensible, practical, easy-to-use. Passenger comfort is reflected in the rear floor that is practically flat, extra-wide seats with

plenty of room to relax, and wider and higher door openings that allow old and young alike to enter and leave with dignity and ease.

Proven through nearly 50 years of continuous operations and billions of miles of challenging stop-and-go driving, Checkers are designed and built for maxi-

mum profitability and minimum upkeep. With two auxiliary folding seats (optional), there's room for eight (including driver) in complete comfort, whether for cross-city or cross-country transportation. Available with your choice of V-8 or 6 cylinder economy engines, both using low-octane fuel.

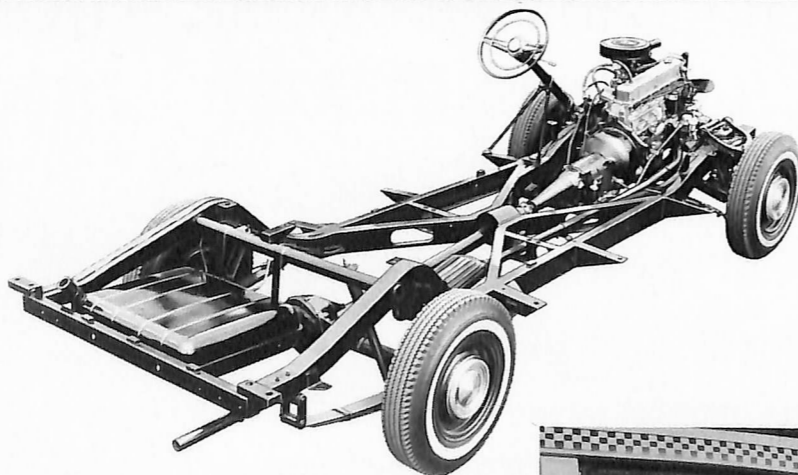


## CHECKER Model A-11 Standard Specifications

(in inches unless otherwise specified)

Wheelbase . . . . . 120  
Over-all Length . . . . . 200½  
Over-all Width . . . . . 76  
Over-all Height . . . . . 62¾  
Turning Radius . . . . . 37 ft., 6 in.

6 Cylinder 155 H.P. 250 cu. in. Overhead Valve Engine. Options include power steering, power brakes, and V-8 engine, 240 H.P. 350 cu. in.



- Re-circulating ball-type gear box.
- Fleet-proven dual-range automatic transmission.
- Double-action shock absorbers and heavy-duty, semi-elliptical 5-leaf springs.
- Generous 23-gallon gasoline tank means less stops for refueling.
- Dual brake system.
- Double channel X-brace frame with 3 tubular and 2 channel cross members.



# Checker Marathon

**No other car is built like a Checker. Here's why:** Engineered and built on the same lines and at the same time as world-famous, billion-mile Checker fleet cars, the Marathon has found a growing market among people from all walks of life—people who recognize the unique and practical features of a car that was built for comfort . . . and built to last.

Unlike other cars, the 200" long Checker has no useless overhang in the front or the

rear; all usable space is inside to provide more room, more comfort for passengers. The Marathon is a cinch to park; will U-turn in a street less than 40-feet wide.

Only a Checker Marathon gives you man-size door openings; you enter and leave without back-breaking contortions. Features include practically flat rear floors, a super-safe, super-strong, double channel X-brace frame and interiors 30% larger than ordinary cars. Style continuity, with-

out yearly model changes, helps maintain your investment.

The Checker Marathon combines the finest road stability of any full-size car in the industry with comfort, economy and performance. The new Marathon is truly America's most improved . . . most proven car; built to last—built to endure—built to the greatest standards of comfort in the automobile industry.



Marathon 4-Door Sedan Model A-12, 120-inch wheelbase with 2 auxiliary fold-away seats (optional) for 8-passenger comfort.

## Checker Marathon 4-Door Station Wagon

Model A-12W Practically flat rear floors, no space-robbing wheel wells, rear seat folds down flat to give over 93 cubic feet of cargo space.

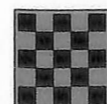


Marathon 4-Door Station Wagon Model A-12W, 120-inch wheelbase with two full seats providing 6 passenger capacity.

### Standard Equipment—Model A-12 and A-12W

- |   |  |
|---|--|
| 6 Cylinder 155 H.P., 250 cu. in. Overhead Valve Engine                  | Double-acting Shock Absorbers          |
| Dual-Range Automatic Transmission                                       | 23-gallon Gasoline Tank                |
| Options Include: 240 H.P. 350 cu. in. V-8 Engine optional at extra cost | Padded, No Glare Instrument Panel      |
| Recirculating Ball-Type Steering  | Fleet-proven Heavy Duty Parts          |
| Dual Brake System   | Directional Signals                    |
| Double Channel X-Brace Frame  | Heater and Defroster (fresh air type)  |
| Independent Coil Front Suspension                                       | G78 x 15 Bias-Belted 4 ply Rated Tires |
| Wide, Easy-riding Rear Springs  | Undercoating                           |
| Oil Filter  |  |
| Windshield Wiper  |  |

**Options include** power steering, power brakes and air conditioning. See list of additional options on page 4.



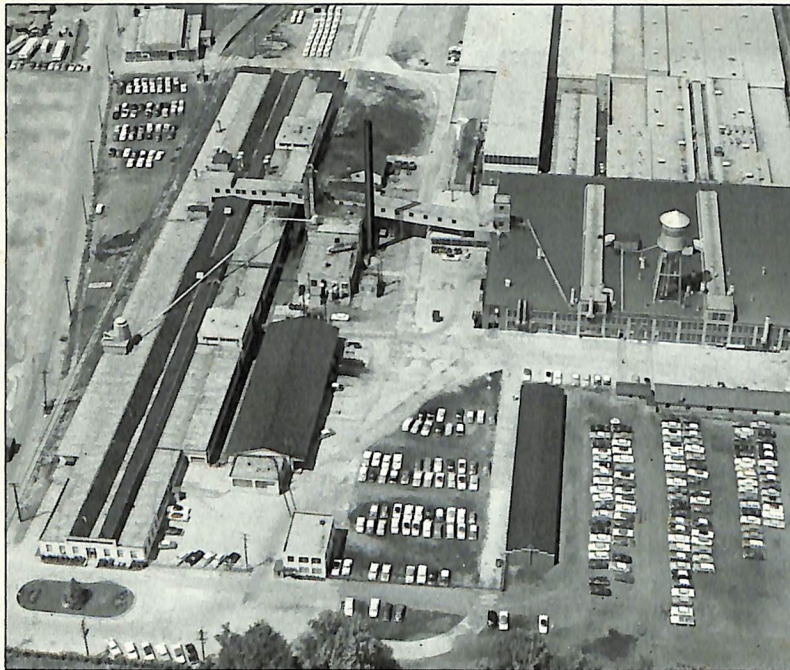


# About Checker...

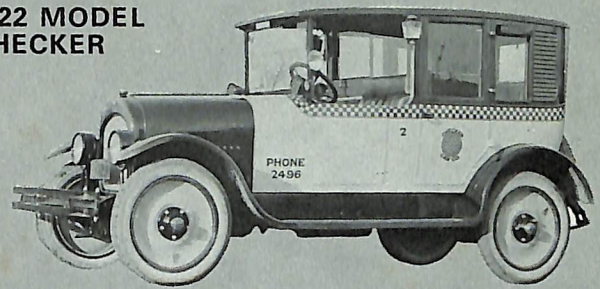
The modern, sprawling Checker Motors Corporation plants are located on a 60-acre site on North Pitcher Street in Kalamazoo, Michigan. For nearly half a century, Checker has engineered and

built cars for special purposes; taxicabs, livery cars, passenger, fleet and business cars. Some operations at the Checker plant are still performed by hand—skilled, meticulous work by dedicated

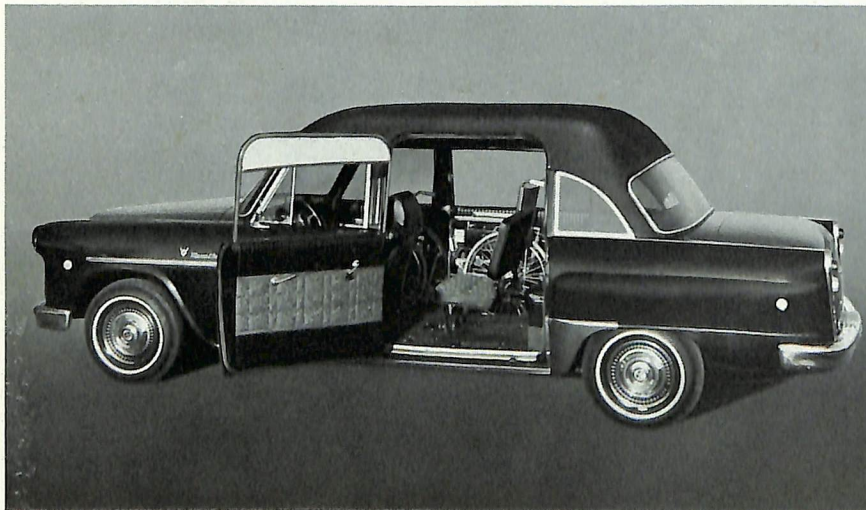
craftsmen, constantly striving to maintain—and enhance—the superior quality. Many makes of cars costing far more money do not duplicate the patient attention given to each Checker product.



**1922 MODEL  
CHECKER**

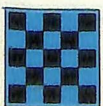


# Checker Medicar...



## **The Ambulance— Limousine— Wheelchair Car**

3-way convenience! Converts to single stretcher ambulance, wheelchair car or 9-passenger family car. A totally comfortable and safe way to transport wheelchair patients—in their chairs—without lifting. Ramp stores in trunk when not in use. The Checker Medicar—a new kind of convenience for those who transport non-ambulatory people.



**Checker Motors Corporation, Kalamazoo, Michigan 49007 U.S.A.**

Specifications subject to change.

Copyright 1970-CMC

69-4  
Printed in U.S.A.