

# 1985 JEEP/RENAULT



JEEP CJ • SCRAMBLER • PICKUP • CHEROKEE • WAGONEER • GRAND WAGONEER • AMERICAN EAGLE  
RENAULT ALLIANCE • ENCORE • FUEGO • SPORTWAGON

**NEW RENAULT ALLIANCE CONVERTIBLE...  
LOWEST PRICED AMERICAN BUILT CONVERTIBLE.\***

The softtop is back, in perhaps its most distinctive form yet. You can select either of two well-equipped versions of the striking new Renault Alliance convertible. It's sun, fun, affordable and built in America.

That's just the beginning. There's value throughout the front-wheel drive Renault Alliance lineup. All are roomy, comfortable, efficient\*\* and bristling

with advanced technology, yet affordably priced. Alliance standard features include:

- Front-wheel drive
- Fuel-injected engine
- 4-wheel independent suspension
- Rack and pinion steering
- Power front disc/rear drum brakes
- 5-speed manual transmission (DL, Limited, and Convertible)



*Alliance*



*Alliance Limited*



*Alliance DL*



*Alliance DL Convertible*

**40** EST HWY **34** EPA EST MPG\*\*

\*Based on a comparison of sticker prices. List price. Tax, destination charges, optional and regional equipment extra.

\*\*Use these figures for comparison. Your mileage may differ due to driving speed, weather condition, and trip length. Actual highway mileage may be lower.



Encore



Encore LS



Encore S

### RENAULT ENCORE. OUTSTANDING VALUE AND ECONOMY IN AN AMERICAN BUILT HATCHBACK.

Encore's European heritage is obvious; however, this roomy five-passenger front-wheel drive hatchback is built in America. With standard features like a fuel-injected 1.4L engine, 4-wheel independent suspension, rack and pinion steering and power front disc/rear drum brakes, Encore proves that "affordable" does not always mean bare bones econo-box.

And now there's a new Encore GS with the hardware to match its tough performance silhouette:

- 1.7L fuel-injected OHC engine
- 5-speed manual performance transaxle
- Tuned exhaust with dual chromed outlets
- Special Handling Package
- High Performance tires on 14" aluminum wheels

**40** EST. MPG   **34** EPA EST. MPG

Use these figures for comparison. Your mileage may differ due to driving speed, weather condition, and trip length. Actual highway mileage may be lower.



Encore GS



Fuego

### RENAULT FUEGO. ONE OF THE BEST SPORTY VALUES IN AMERICA.

Racy good looks that can up the pulse rate on sight. Exhilarating performance from a new 2.2L fuel-injected overhead cam powerplant. Bio-formed highback bucket seats,

6-speaker AM/FM stereo. Power steering and brakes. 5-speed manual transmission. Plus much more, all at an affordable price.

Fuego and Sportwagon

**31** EST  
MPG **23** EPA  
EST  
MPG\*

\*Use these figures for comparison. Your results may differ due to driving speed, weather condition and trip length. Actual highway mileage may be lower.



Fuego

### RENAULT SPORTWAGON. WHAT YOU WANT AND WHAT YOU NEED.

Sportwagon provides many things wagon owners have had to pass up: sporty styling, enthusiastic performance, quick nimble handling, touring car elegance. Yet it pro-

vides everything you expect in a wagon: room for five plus gear, a wide-opening rear hatch, and a folding rear seat that makes space for more than 65 cubic feet of cargo.

And like all front-wheel drive Renaults, Sportwagon is surprisingly affordable.



Sportwagon Touring



Sportwagon



Cherokee Chief



Cherokee Laredo



Cherokee Pioneer

**NEW SIZE JEEP CHEROKEE. THE BEST GETS BETTER.**

In its first year Jeep Cherokee was judged "4x4 Of The Year" by the three leading off-road publications in America. You'd think it would be tough to improve on a vehicle with such notoriety. But improve it we did! Now Cherokee offers shift-on-

the-fly convenience from two 2WD/4WD systems. And now there's an available 2.1L turbo diesel for exhilarating performance and outstanding economy.\* Plus, Jeep Cherokee offers room for five with gear and 2 or 4 doors.

**25** EST. HWY.

**21** EPA CITY MPG

\*Use these figures for comparison. Your results may differ due to driving speed, weather condition and trip length. Actual highway mileage may be lower.



## JEEP CJ. THE ORIGINAL.

Jeep CJ is one of a kind excitement. Standard features include an electronic 2.5L engine, 4-speed transmission and rugged Jeep part-time 2WD/4WD. Year after year Jeep CJ is the

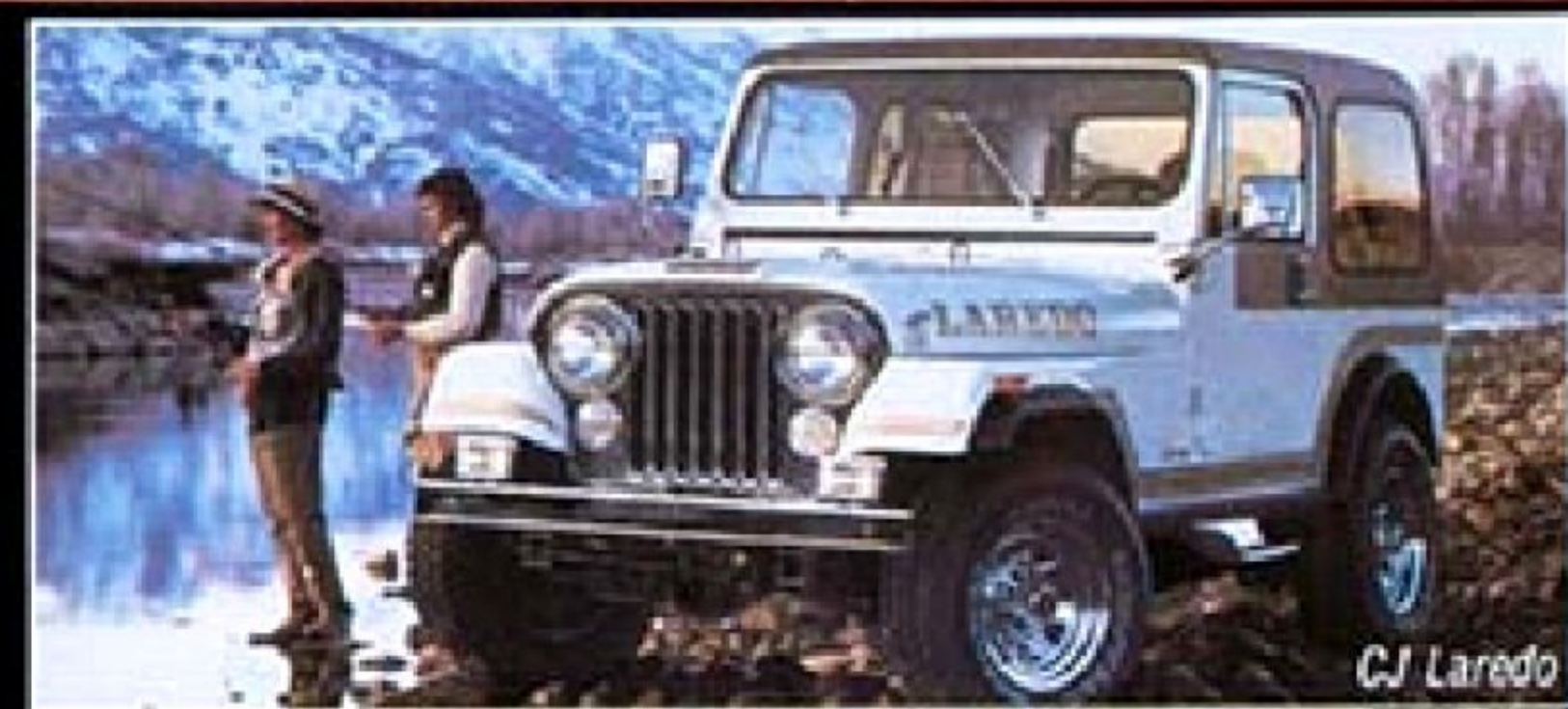
choice of many professional off road competition drivers. It's also the choice of an elite corps of amateur four-wheelers who stand a breed apart. You can join the corps for far less than you'd guess.

Jeep CJ and Scrambler

**20** EST  
Hwy

**19** EPA  
EST  
MPG

Use these figures for comparison. Your results may differ due to driving speed, weather condition and trip length. Actual highway mileage may be lower.



CJ Laredo

## JEEP SCRAMBLER AND PICKUP. THE RIGHT TOOL FOR THE JOB.

JEEP SCRAMBLER is built to take on work or play with equal zest. Generous 5' pickup box. Payload capacity of 1400 lbs. Spirited electronic 2.5L powerplant and 4-speed manual transmission. Plus famous Jeep 4-wheel

drive backed by more than 45 years of experience.

JEEP FULL SIZE PICKUPS are built rough for the big jobs. Jeep is the one with 4-wheel drive

built in, not added on. Jeep is the one with a powerful 5.9L V-8 standard (J-20). And Jeep is the one with a pleasingly low silhouette for easy entry and cargo loading.



J-20 Pickup



CJ



Scrambler Laredo



Wagoneer Limited



Grand Wagoneer



Wagoneer

**4WD LIVING IN THE LUXURY LANE.**

**JEEP WAGONEER LIMITED.** Luxury choice number one from Jeep is the elegant 5-passenger, 4-door Wagoneer Limited with shift-on-the-fly 2WD/4WD Selec-Trac, leather-trimmed seats,

choice of standard 2.5L, 4-cylinder engine, optional V-6, or new 2.1L turbo diesel powerplant, plus standard features you'd expect to find on fine luxury wagons.

**25** EST. HWY.

**21** EPA EST. MPG

Use these figures for comparison. Your results may differ due to driving speed, weather condition and trip length. Actual highway mileage may be lower.

**JEEP GRAND WAGONEER.** Luxury choice number two from Jeep is the magnificent Grand Wagoneer...the ultimate 4-wheel drive wagon. Grand Wagoneer lets six

passengers enter gracefully through 4 doors and features a sumptuous leather/cord interior, standard Six or optional V-8 power, shift-on-the-fly 2WD/4WD

Selec-Trac, plus a standard features lineup that reads like everyone else's options roster.



Grand Wagoneer



Eagle Wagon Limited



Eagle Wagon



Eagle Sedan

#### 4-WHEEL DRIVE EAGLE. FAMILY SECURITY PLAN.

Of course, our listing of 4-wheel drive models would not be complete without consideration of the distinctive and well-appointed American Motors Eagle. Eagle features shift-on-the-fly Select Drive for the extra traction and security of 4WD on bad roads, and the economy of 2WD on paved surfaces.\* And every Eagle provides an outstanding list of standard amenities including an electronic 4.2L 6-cylinder engine, 5-speed manual transmission, power steering and brakes, individually reclining seats, and even a quartz digital electric clock.

**21** EST. HWY. **17** EPA EST. MPG  
\*Use these figures for comparison. Your results may differ due to driving speed, weather condition and trip length. Actual highway mileage may be lower.



 **Jeep** | **RENAULT** 