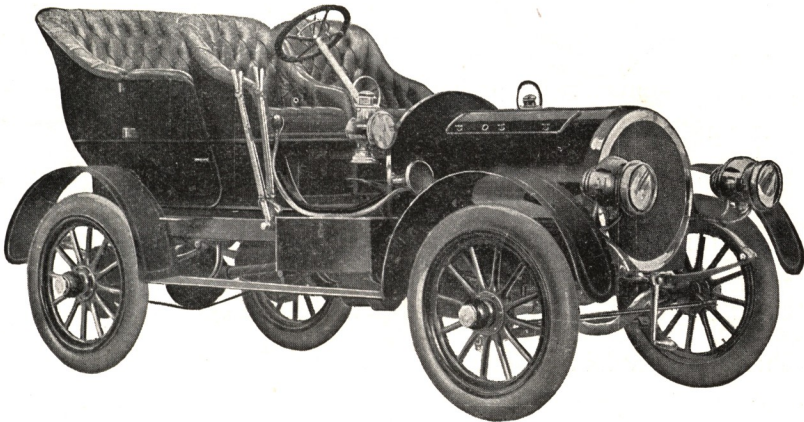
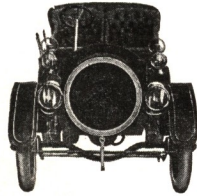


NATIONAL GASOLINE MODEL C



**NATIONAL MOTOR VEHICLE CO.
INDIANAPOLIS, INDIANA**

National Gasoline

Model C

MOTOR—24-30 H. P., four cylinders, $4\frac{1}{4} \times 5$, vertical, individually mounted under bonnet. Mechanical valves; gear pump direct driven; gear driven commutator, divided aluminum crank case; interchangeable parts.

CLUTCH—Self-contained, aluminum cone, leather faced, spring cushioned.

TRANSMISSION—Sliding gear; three speeds forward, and reverse, direct on high, double self-contained ball bearings; gears run in oil.

WHEEL BASE—Ninety-eight inches.

TREAD—Fifty-four inches center to center of tires.

DRIVE—Bevel gear through ball bearing propeller shaft and flexible joint to rear axle of improved design.

BEARINGS—Improved type ball bearings throughout.

OILING—Force feed to motor, transmission and rear system.

IGNITION—Quad vibrator coil; jump spark, one set dry cells, and set of storage batteries in connection with dynamo.

GASOLINE CAPACITY—Fifteen gallons.

WATER CAPACITY—Five gallons.

WHEELS—Wood artillery pattern, twelve spokes front and rear.

TIRES—Thirty-four by four Diamond detachable Continental type.

BRAKES—Two systems: internal expanding metal to metal hub-brakes, drums $13\frac{1}{4} \times 1\frac{1}{2}$, applied by hand lever. Foot lever applies constricting band metal to metal brake on driving shaft; applying either break releases clutch.

GUARDS—Plowshare front. Rear conforms to curve of wheel. Wide running boards connect the guards.

FRAME—Pressed steel channel section with sub-frame, firmly riveted and braced.

REAR AXLE—Compound construction, inner axle used only as driver, wheels turn upon double bearings, on hollow axle, and carry all weight.

FRONT AXLE—Seamless, cold drawn steel tubing, heavy gauge, forged yokes.

BODY—Side entrances; removable high back tonneau, platform type, divided front seats, carrying capacity, five passengers.

FINISH—Blue body, black mouldings with gold stripes.

GEARS—Yellow, with black stripes: option—blue with gold stripes.

UPHOLSTERING—Luxuriously upholstered in leather. Special spring mattresses and cushions.

STEERING SYSTEM—Hand wheel, inclined post, worm and gear, non-reversible chuck. Ball joint connections to double connection rods, front and rear of forged knuckles.

SPEED—Five to forty-five miles.

MUFFLER—Concentric perforated cylinders provided with cut-out.

COOLING SYSTEM—Cylindrical cellular cooler with ball bearing fan, circulation secured by gear pump.

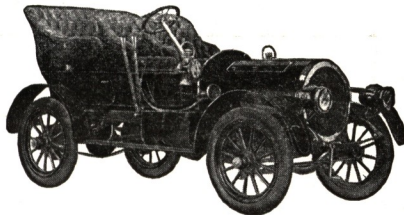
BONNET—Semi-cylindrical, removable, hinged at top and sides.

CONTROL—Single lever at driver's right, controls all speeds. Three forward speeds and one reverse. In changing speeds, clutch is released automatically.

SPRINGS—Half-elliptic, front and rear.

TOOL BOXES—Under tonneau seat and on right-hand foot board.

EQUIPMENT—Five lamps, two mirror lense, gas in front, complete with copper tube connections to generator; two mirror lense, oil at sides and oil tail lamp. Horn, with tube, storm aprons and tools.



Price \$2,500, Delivered F. O. B. Indianapolis
25 per cent Cash with Order. Balance Draft against Bill
of Lading. Orders Filled in Rotation.

HAYDEN AUTOMOBILE CO.
Tel. South 2. 1337 MICHIGAN AVENUE
CHICAGO DISTRIBUTORS

