

*Ford* MUSTANG



Go Further



VISIONARY. INGENIOUS. REMARKABLE.  
EVERY CAR BEARS HIS SIGNATURE.

Henry Ford



**Mustang BULLITT**  
With Dark Highland Green exclusive body colour with unique BULLITT 19" high-gloss black-painted alloy wheels  
BULLITT and all related characters and elements © & ™ Warner Bros. Entertainment Inc. (s18)

**Mustang EcoBoost Fastback**  
With Orange Fury exclusive body colour (option at extra cost) and standard 19" alloy wheels in Shadow Black

**Mustang GT Convertible**  
With Velocity Blue premium body colour and 19" forged alloy wheels (options at extra cost)



Scan the QR codes to access additional content.

CONTENTS

Unleashed .....	2	Express your true colours .....	32
Vocal .....	4	Take your seat .....	34
Iconic .....	6	Create your perfect Mustang .....	36
Distinctive .....	8	Personalise .....	8
Tactile .....	10	Wilder without compromise .....	40
Emotive .....	12		
Authentic .....	14	Make your mark .....	42
Liberated .....	16	Fits into your life .....	44
Memorable .....	18	Get more from each drive .....	46
Confident .....	20	Connect with your world .....	48
Agile .....	22	Explore your own space .....	50
Athletic .....	24	Confidence you can feel .....	52
Efficient .....	26	Gauge your performance .....	54
Smart .....	28	Enjoy Mustang in dynamic detail .....	56
Connected .....	30	Own .....	58
		What's next? .....	60



# *Unleashed.*

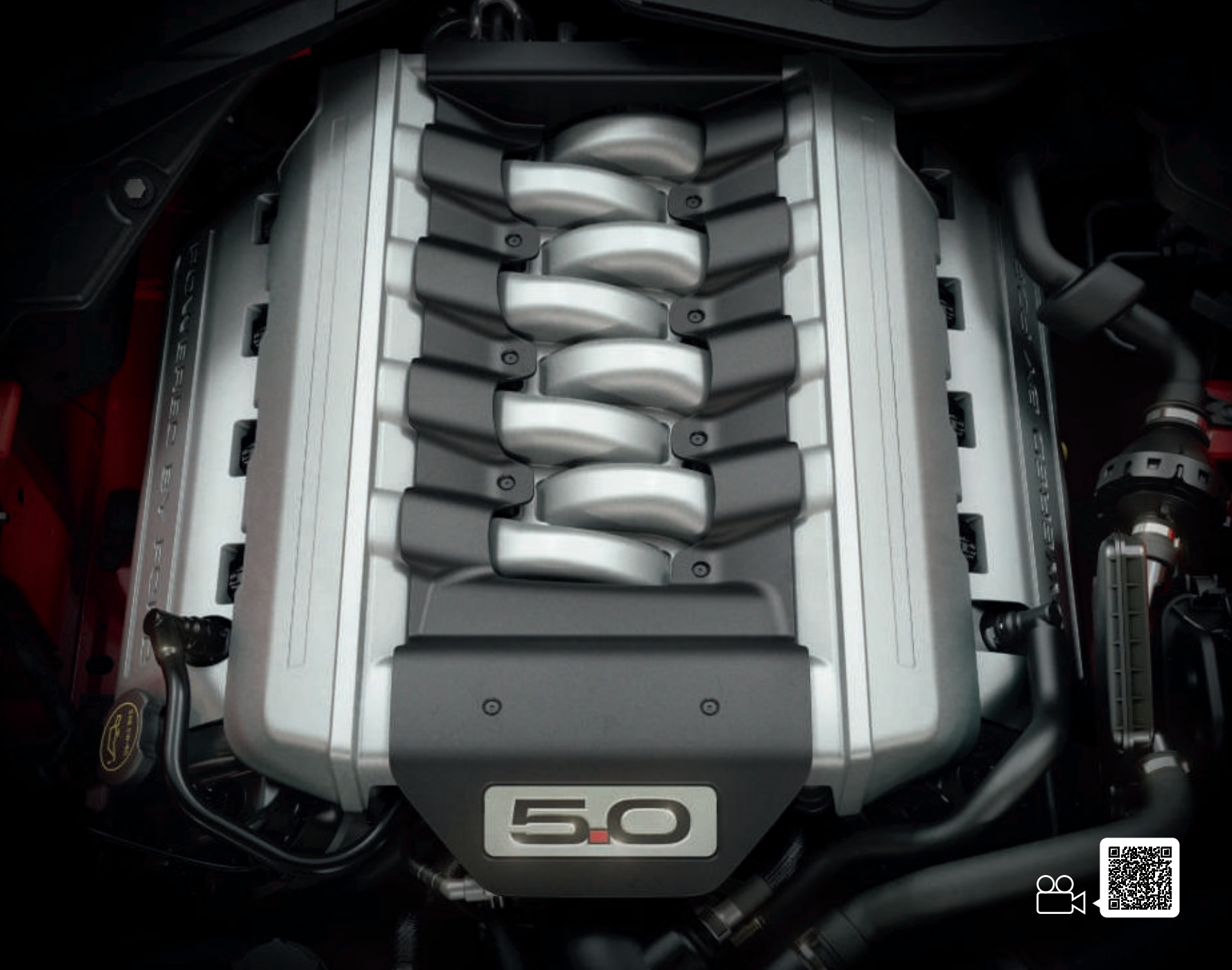
However you look at it, there's no mistaking the Ford Mustang. With its lean and muscular lines, advanced technology and exhilarating performance, the Ford Mustang is more than just a sports car. It's the heart and soul of Ford.

From every angle, the new Mustang makes a powerful impression. At the front, you'll find a wider, more aggressive mesh grille and a re-profiled bumper. New air extractor bonnet vents not only turn heads, but ensure the engine remains cool, even in the most demanding conditions. And no-one should fail to notice its eye-catching new LED headlights with instantly recognisable signature lighting.





**Vocal.**





# Iconic.

## Mustang BULLITT limited edition

Celebrating the 50th anniversary of the iconic movie "Bullitt". Ford introduces the sensational new Mustang BULLITT limited edition. Powered by a re-tuned 5.0-litre V8 engine and finished in classic Dark Highland Green or Shadow Black, it revives the screen legend with new levels of power and precision.

*Model shown is a Mustang BULLITT Fastback in Dark Highland Green body colour with 19" alloy wheels.*

BULLITT and all related characters and elements © & ™ Warner Bros. Entertainment Inc. (s18)







## ***Distinctive.***

What sets the new Mustang apart is the sheer pleasure of a shape that differs so much from the rest. From the shark-nose front with its lower, re-profiled bonnet to the sculpted rear shoulders, its cool, classic form is one of pure emotion.

**Aerodynamics** Mustang is the first Ford to be equipped with front wheel aero curtains that help guide airflow across the front wheels. At the rear, the tapered bodywork channels air effectively from the back of the car to further reduce aerodynamic drag.







## ***Tactile.***



Taking inspiration from aircraft cockpit design, the new Mustang delivers a thrilling drive. Important controls are within easy reach with a **digital instrument cluster** that can be read at a glance, face-level **centre air vents** and **aircraft-style toggle switches**. The **gearshift** is perfectly placed with a short-throw between gears. And the leather-wrapped **steering wheel** feels just right in your hands.





## ***Emotive.***

The look may say new, but its soul is pure Mustang. Strong side lines with wide shoulders, a noticeable set of haunches and a raked roofline combine for a powerful muscle car look. New Mustang changes the way we see things. It's a presence you just can't ignore.





*Authentic.*



360°



# *Liberated.*

Enjoy the wind in your hair with the captivating Ford Mustang Convertible. Designed from the very start as a convertible, it's packed with all the performance and attitude of the Fastback, but with the added thrill of open-top driving.





*Memorable.*







# ***Confident.***

Now you can feel more confident than ever behind the wheel of the new Mustang. In addition to its powerful braking system – with six-piston Brembo front calipers on GT models – Mustang benefits from an expanded suite of safety and driver-assistance features.

## **Pre-Collision Assist**

Scans the road ahead for moving objects and pedestrians, even at night, and is designed to warn you if a collision is likely. If you don't react, it automatically starts braking to help slow you down. (Standard)

## **Distance Alert**

Displays the distance to the vehicle in front and can alert you if you get too close. (Standard)

## **Lane-Keeping System**

Designed to warn you if you accidentally drift out of lane on a multi-lane road, and can guide you back safely into the right lane. (Standard)

## **Driver Alert**

Monitors your driving behaviour and can alert you if it detects signs of driver fatigue. (Standard)





# Agile.

Mustang has always been a unique sports car, and now the experience soars to a new high. The specially-developed chassis with fully-independent suspension is designed to make this the most agile Mustang ever. Lateral stiffness has been increased at the rear and, along with new shock absorbers and stabiliser bars, has further enhanced its handling.

## Limited slip differential

Mustang's limited slip differential is ideally suited to rear-wheel drive sports cars. If one wheel starts to slip, engine torque is automatically transferred to the other wheel. This greatly improves traction and agility out of corners and on slippery surfaces. (Standard)

## Selectable driving modes

Mustang also comes with electronic chassis calibration. Four driver-selectable modes – Normal, Sport, Track and Snow/Wet – determine throttle response, gearshift points (on automatic transmission models), steering effort and stability control calibration to suit different driving conditions. (Standard)

## Rev-matching

Mustang GT's 6-speed manual transmission is now offered with rev-matching. This feature is designed to enhance the driving experience by matching the throttle position to the wheel speed for smooth gear changes, especially when down-shifting. Can be turned on/off in Track Apps. (Standard on GT with manual transmission)







# Athletic.

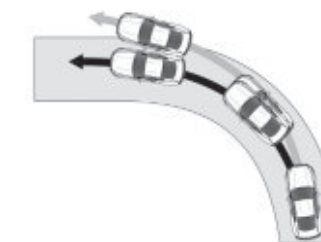
New Mustang lets you adapt your car's dynamic performance to suit your driving style.

## **MagneRide® adaptive suspension**

For the ultimate driving experience, the new Mustang is now available with MagneRide® adaptive suspension. The system monitors and adjusts itself thousands of times per second to deliver exceptional levels of stability, comfort and control. Four settings are available – Normal, Sport, Track and Drag – so you can tailor the handling to suit the road conditions and the style of driving. (Option)

## **Electronic Stability Control (ESC)**

Designed to compensate for oversteer or understeer, ESC detects sudden changes in steering, braking and vehicle attitude, and adjusts the speed of individual wheels to help keep you on course. (Standard)







#### **Twin-scroll turbocharger**

The 2.3-litre Ford EcoBoost is the first Ford engine to use a low-inertia twin-scroll turbocharger. Together with the integrated exhaust manifold that maximises pulse energy to the turbine, the result is improved responsiveness for overtaking manoeuvres, lower emissions and improved efficiency.

## ***Efficient.***

Based on state-of-the-art technology, Mustang's **2.3-litre Ford EcoBoost** engine offers the perfect balance between dynamic performance and effortless efficiency. A high-capacity direct injection system precisely controls fuel delivery, while a twin-scroll turbocharger delivers a strong 290 PS – and instant throttle response.

#### **2.3-litre Ford EcoBoost petrol engine**

With its specially-designed 2.3-litre Ford EcoBoost engine, the new Mustang is hungry for fun, not fuel. Part of the International Engine of the Year family, this powerful four-cylinder unit combines a low-inertia twin-scroll turbocharger, high-precision direct injection and Twin independent-Variable Cam Timing (Ti-VCT) to help reduce fuel consumption and emissions, while maximising dynamic performance.

#### **5.0-litre V8 petrol engine**

Performance of an epic scale is provided by our most powerful 5.0-litre V8 with 450 PS and muscular 527 Nm of torque. The numbers are impressive, but even they fail to convey the rich endless power delivery that results in such effortless flexibility. Or the engine's distinctive throaty growl that provides the soundtrack to every drive.



**Mustang** powered by **FORD EcoBoost**







## Smart.



New Mustang's smart features make your experience even more special. **Mustang projection lamps** beam the iconic Mustang on the ground when you unlock the doors. Select reverse gear and the **rear-view camera** automatically displays the view from behind the car on the 8" TFT touchscreen. **Pre-Collision Assist** is designed to warn of a potential collision with a vehicle ahead and can apply the brakes if you fail to react. **Adaptive Cruise Control** is designed to maintain your desired distance from the vehicle in front. While the **Premium B&O Sound System** (option) delivers the optimum in-car audio experience.



# Connected.

## Ford SYNC 3

Ford SYNC 3 is designed to integrate seamlessly with your compatible smartphone\*, letting you control everything from calls and text messaging to music and satellite navigation (option) – all via the 8" touchscreen, or the simplest voice commands.

## Touchscreen

The SYNC 3 touchscreen supports multi-touch ‘swipe’ and ‘pinch-to-zoom’ gestures, and lets you arrange application icons and background displays, just as you would on your tablet or phone.

## AppLink, Apple CarPlay and Android Auto

Control SYNC-compatible apps with AppLink, while Apple CarPlay and Android Auto let you navigate your smartphone HMI through the SYNC home screen as if it were your handset.

## Digital LCD instrument cluster

Mustang’s new all-digital cluster lets you customise exactly what you want to see while you’re on the road. Choose from three modes – Normal, Sport and Track – to personalise the information that’s displayed, right down to the colour of your gauges.

## Mustang MyMode

Allows you to save your favourite drive settings, including suspension and steering preferences.



\*Please Note: Full SYNC 3 smartphone integration only available with iPhone 5/Android 5.0 (Lollipop) or higher. Some SYNC 3 functions require a data connection, so mobile data charges will apply. To check whether Apple CarPlay and Android Auto are available in your market, please check official Apple CarPlay and Android Auto websites for the latest information.





# Express your true colours.

**Ruby Red**  
Exclusive body colour\*



**Race Red**  
Standard body colour



**Orange Fury**  
Exclusive body colour\*



**Need for Green<sup>oo</sup>**  
Exclusive body colour\*



**Dark Highland Green<sup>o</sup>**  
Exclusive body colour\*



\*At extra cost.  
<sup>o</sup>Available for Mustang BULLITT only.  
<sup>oo</sup>Available in combination with black over-the-top stripe kit only.

**Note** The car images used are to illustrate body colours only and may not reflect current specification or product availability in certain markets. Colours and trims reproduced within this brochure may vary from the actual colours, due to the limitations of the printing processes used.

**Oxford White**  
Premium body colour\*



**Ingot Silver**  
Premium body colour\*



**Magnetic**  
Exclusive body colour\*



**Velocity Blue**  
Premium body colour\*



**Kona Blue**  
Premium body colour\*



**Shadow Black**  
Premium body colour\*



**Note** For optional over-the-top stripe and black contrast roof availability, please see page 42.





# Take your seat.

## **EcoBoost and GT**

Seat insert: Mini Perf  
over Salerno in Ebony  
Seat bolster: Salerno in  
Ebony



## **EcoBoost and GT**

Seat insert: Mini Perf  
over Salerno in Ceramic  
Seat bolster: Salerno in  
Ceramic

## **EcoBoost and GT**

Seat insert: Mini Perf  
over Salerno in Russet  
Tan  
Seat bolster: Salerno in  
Russet Tan



## **EcoBoost and GT**

Recaro seat insert: Mini  
Perf over Salerno  
Leather in Ebony with  
Metal Grey contrast  
stitching  
Recaro seat bolster:  
Salerno Leather in  
Ebony

## **BULLITT**






Recaro seat insert: Mini  
Perf over Salerno  
Leather in Ebony with  
Feature Green contrast  
stitching  
Recaro seat bolster:  
Salerno Leather in  
Ebony

Mustang's interior represents the pinnacle of Ford craftsmanship and design. Four interiors are available, offering a choice of leather trim options in a range of coordinating colours.





Create your perfect Mustang.

Create your perfect Mustang.		Standard Body Colours	Premium Body Colours					Exclusive Body Colours				
			Race Red	Oxford White	Shadow Black	Ingot Silver	Velocity Blue	Kona Blue	Orange Fury	Ruby Red	Need for Green	Dark Highland Green
EcoBoost and GT												
Premium leather seats		<input type="checkbox"/>	<input type="checkbox"/>	<input type="checkbox"/>	<input type="checkbox"/>	<input type="checkbox"/>	<input type="checkbox"/>	<input type="checkbox"/>	<input type="checkbox"/>	<input type="checkbox"/>		<input type="checkbox"/>
Seat Insert: Mini Perf over Salerno in Ebony												
Seat Bolster: Salerno in Ebony												
		<input type="checkbox"/>		<input type="checkbox"/>		<input type="checkbox"/>	<input type="checkbox"/>	<input type="checkbox"/>	<input type="checkbox"/>			<input type="checkbox"/>
Seat Insert: Mini Perf over Salerno in Ceramic												
Seat Bolster: Salerno in Ceramic												
			<input type="checkbox"/>	<input type="checkbox"/>			<input type="checkbox"/>					<input type="checkbox"/>
Seat Insert: Mini Perf over Salerno in Russet (Tan)												
Seat Bolster: Salerno in Russet (Tan)												
		<input type="checkbox"/>	<input type="checkbox"/>	<input type="checkbox"/>	<input type="checkbox"/>	<input type="checkbox"/>	<input type="checkbox"/>	<input type="checkbox"/>	<input type="checkbox"/>			<input type="checkbox"/>
Recaro leather Seats <sup>1)</sup>												
Seat Insert: Salerno in Ebony/Mini Perf over Salerno in Ebony												
Seat Bolster: Mini Perf over Salerno in Ebony/Salerno in Ebony												
				<input type="checkbox"/>							<input checked="" type="checkbox"/>	
Seat Insert: Salerno in Ebony/Mini Perf over Salerno in Ebony with Green Detailing												
Seat Bolster: Mini Perf over Salerno in Ebony/Salerno in Ebony with Green Detailing												

Colour and trims



12 year Ford Perforation Warranty

The Ford Mustang is covered by the Ford Perforation Warranty for 12 years from the date of first registration. Subject to terms and conditions.

<sup>1)</sup>Recaro seats available as an optional upgrade at extra cost, except BULLITT where Recaro seats with green detailing are standard

BULLITT and all related characters and elements © & ™ Warner Bros. Entertainment Inc. (s18)

- Standard
- Optional, at extra cost





# Personalise.

## Boot liner

Durable tray style liner, designed to keep the load compartment clean and tidy, ideal for transporting wet or dirty items. (Accessory)



## Carpet floor mats

Carpet floor mats are designed to fit perfectly and protect against dirt and damp. The driver's mat is securely fixed directly onto the vehicle's floor to help prevent it from slipping. (Accessory)



## Carbon fibre shift knob

Black carbon fibre shift knob for 6-speed manual transmission model. (Accessory)



## Protective cover

Full vehicle covers for Fastback and Convertible to protect against the elements, available for both indoor and outdoor use. With Mustang logo on the front and Mustang nameplate on the rear. (Accessory)

## Windstop (right)

Featuring a print of the iconic Mustang logo, it reduces wind noise and turbulence at all speeds for a more enjoyable drive. (Accessory for Mustang Convertible)



For more accessories for your Ford Mustang – visit [www.ford-accessories.co.uk](http://www.ford-accessories.co.uk)

For a range of Ford branded items – from clothing to lifestyle products and model cars – visit [www.fordlifestylecollection.com](http://www.fordlifestylecollection.com)





Model shown is a Mustang GT Fastback in Race Red standard body colour with black over-the-top herpa print stripe kit (accessory), black front grille logo (accessory), black 5.0 side badges (accessory).

Fitment of accessories may have an impact on your vehicle's fuel consumption.

# GO WILDER. WITHOUT COMPROMISE.

**Designed, engineered and developed for your Mustang.**

Personalise almost any aspect of your Ford with our exclusive range of Ford Performance Parts. From short throw gearshift kits and racing stripes to alloy wheels and sports exhausts. Designed, engineered and developed without compromise, our products bear the Ford Performance seal of approval.

Visit [www.ford-accessories.co.uk](http://www.ford-accessories.co.uk)

**FORD PERFORMANCE  
PARTS**

**Strut tower brace kit**

Made from high strength tubular aluminium. Kit including strut tower brace, cowl C-brace and installation materials. (Accessory)

**Bonnet strut kit**

Lifts and keeps the bonnet open securely using 40.82 kg rated gas struts. Made from lightweight steel and aluminum with a durable black powder coated finish and laser engraved Ford Performance logo. (Accessory)





Make your mark.

- Standard
- Optional, at extra cost
- Part of an option pack, at extra cost

	Ford EcoBoost Fastback	Ford EcoBoost Convertible	GT Fastback	GT Convertible	BULLITT
<b>Wheels</b>					
Alloy – 19"x9" 7x2-spoke Ford EcoBoost glossy black alloy wheels (fitted with 255/40 tyres)	Standard	Standard			
Alloy – 19"x9" (front) and 19"x9.5" (rear) multi-spoke GT gloss black premium painted alloy wheels (fitted with 255/40 front tyres and 275/40 rear tyres)			Standard	Standard	
Alloy – 19"x9" (front) and 19"x9.5" (rear) 19" High Gloss Black-finish 5-spoke alloy wheel (fitted with 255/40 R19 front tyres and 275/40 R19 rear tyres)					Standard
Alloy – 19"x9" 5x2-spoke premium polished forged aluminium wheels (fitted with 255/40 tyres) (Included in Custom Pack 3/4)	Part of an option pack, at extra cost	Part of an option pack, at extra cost			
Alloy – 19"x9" (front) and 19"x9.5" (rear) 5x2-spoke premium polished forged aluminium wheels (fitted with 255/40 front tyres and 275/40 rear tyres) (Included in Custom Pack 3/4)	Part of an option pack, at extra cost	Part of an option pack, at extra cost	Part of an option pack, at extra cost	Part of an option pack, at extra cost	
Alloy – 19"x9" 10x2-spoke premium Luster Nickel painted alloy wheels (fitted with 255/40 tyres) (Included in Custom Pack 1)	Part of an option pack, at extra cost	Part of an option pack, at extra cost			
Alloy – 19"x9" (front) and 19"x9.5" (rear) 10x2-spoke premium Luster Nickel painted alloy wheels (fitted with 255/40 front tyres and 275/40 rear tyres) (Included in Custom Pack 1)			Part of an option pack, at extra cost	Part of an option pack, at extra cost	
Alloy – 19"x9" 10x2-spoke premium gloss Black painted alloy wheels (fitted with 255/40 tyres) (Included in Custom Pack 2)	Part of an option pack, at extra cost	Part of an option pack, at extra cost			
Alloy – 19"x9" (front) and 19"x9.5" (rear) 10x2-spoke premium gloss Black painted alloy wheels (fitted with 255/40 front tyres and 275/40 rear tyres) (Included in Custom Pack 2)			Part of an option pack, at extra cost	Part of an option pack, at extra cost	
Tyre mobility kit	Standard	Standard	Standard	Standard	

Styling and appearance

Alloy wheels

**A** 19" x 9" multi-spoke alloy wheels in gloss black colour (standard on EcoBoost)

**B** 19" x 9" (19" x 9.5" BULLITT rear) high gloss black 5-spoke alloy wheel (standard on BULLITT)

**C** 19" x 9" (19" x 9.5" GT rear) multi-spoke alloy wheels in gloss black colour (standard on GT)

**D** 19" x 9" (19" x 9.5" GT rear) multi-spoke alloy wheels in Luster Nickel colour

**E** 19" x 9" (19" x 9.5" GT rear) forged alloy wheels



Model shown (right) is a Mustang GT Fastback with solid stripe in gloss black (option).

BULLITT and all related characters and elements © & ™ Warner Bros. Entertainment Inc. (s18)





Fits into your life.

- Standard
- Optional, at extra cost
- Part of an option pack, at extra cost

	Ford EcoBoost Fastback	Ford EcoBoost Convertible	GT Fastback	GT Convertible	BULLITT
Design features					
"GT" exterior badging on bootlid					
GT "5.0" badging on front wings					
BULLITT exterior badging on bootlid					
Upper grille – Black, EcoBoost design					
Upper grille – Black, GT design featuring vertical power bars					
Upper grille – Black unique BULLITT design without pony badge					
Lower grille – Aerolip spoiler GT design					
Lower grille – Aerolip spoiler BULLITT design					
Hood scoop vents					
Black moulded beltline and door line ornamentation					
Chrome moulded beltline and door line ornamentation					
Chrome moulded beltline and door line ornamentation (included in Custom Upgrade Packs 1 & 3)					
Single wing rear spoiler – Large					
Exhaust – Dual bright, with rolled polished tips					
Exhaust – Quad chrome exhaust pipe					
Contrast colour painted roof – Black					
Over the top stripes – Ebony (not available with contrast colour painted roof)					
Over the top stripes – Oxford White (not available with contrast colour painted roof)					
Roof – Black cloth (Convertible only)					
Foot pedals – Unique metallic finish					
Scuff plates – Illuminated insert					
Instrument panel – Dark aluminium theme					



Exterior and interior features

Convertible roof controls

The power-operated roof has a single latch design to make releasing and fastening the top easy.



Convertible roof

The power-operated roof can be retracted on the move, lowering fully in less than ten seconds. This can be done at speeds of up to 3 mph.

Soft top

The multilayer insulated fabric roof fits tightly and provides a quiet interior when the top is up.





Get more from each drive.

- Standard
- Optional, at extra cost
- Part of an option pack, at extra cost

	Ford EcoBoost Fastback	Ford EcoBoost Convertible	GT Fastback	GT Convertible	BULLITT
Driver assistance					
Electronic power-assisted steering (EPAS)					
Rear-view camera with reverse parking distance sensors					
Rear-view mirror – auto-dimming					
Adaptive Cruise Control					
Pre-Collision Assistance					
Lane-Departure Warning					
Hill Start Assist					
Exterior Lighting					
LED headlights (with integrated daytime running lights and automatic activation, high beams and levelling)					
LED fog lights – Front					
LED rear lights					
Suspension					
Independent rear suspension					
Heavy-duty front springs					
Upsized rear sway bar					
MagneRide® – Adaptive damping, magnetically controlled shock absorbers					
Instruments and Controls					
Full TFT/LCD instrument cluster					
Tyre Pressure Monitoring System (TPMS)					

Driving experience



All-independent suspension

Mustang’s suspension geometry has been tuned to provide anti-squat, anti-lift and anti-dive characteristics. This helps keep Mustang’s body more level under hard acceleration or braking.



Track Apps

Displays useful real-time performance information on the in-dash LCD screen to help you get the most from your new Mustang. (Standard)

Model shown right is Mustang GT with Line Lock demonstration. (track use only)





**Connect with your world.**

- ☒ Standard
- ☐ Optional, at extra cost
- ☒ Part of an option pack, at extra cost

\*Ford Emergency Assistance is an innovative SYNC feature that uses a Bluetooth®-paired and connected mobile phone to help vehicle occupants initiate a direct call to the local Communications Centre, following a vehicle crash event involving an airbag deployment or fuel pump shut off. The feature operates in more than 40 European countries and regions.

### Interior Convenience

Centre console with partial leather and contrast stitching in Ebony (included in Custom Packs)

2 Cupholders

Mini overhead Console (including sunglasses bin)

Courtesy lights – Ambient lighting, map reading lights, illuminated entry, courtesy delay and theatre dimming

Driver/passenger sunvisor – Illuminated

## Audio and Communication Systems

Ford SYNC 3 DAB Radio with 8" TFT Touchscreen, Emergency Assistance\*, Apple CarPlay® & Android Auto®, USB connectivity & 9-speakers

Ford SYNC 3 Navigation with 8" TFT Touchscreen, DAB Radio, Emergency Assistance\*, Apple CarPlay® & Android Auto®, USB connectivity & B&O audio sound system with twelve premium speakers (included within Custom Packs)

## Climate Control

Air conditioning – Dual-zone Electronic Automatic Temperature Control (DEATC)

### Seating

Front seats – Sports-style

Front seats – 6-way power adjust driver and passenger seat (power fore/aft/up/down - includes up/down for both front and back of seat)

Lumbar adjust (Driver seat only)

Front seats – Recaro (Fastback only) in Ebony

Recaro Driver Front seat adjuster – 4-way manual driver seat (manual fore/aft/up/down)

Recaro Passenger Front seat adjuster – 2-way manual passenger seat  
(manual fore/aft/recline)

Front seats – Climate controlled (included within Custom Packs) (Not available with Recaro seats)

Rear seats – Split folding

## Comfort and communication

**Ford SYNC 3 with voice control and touchscreen**

Control your phone, navigation (where fitted), audio and media inputs, and climate control using simple, intuitive voice commands.



## FordPass

**Live Traffic\*** delivers up-to-date traffic information to your SYNC 3 navigation system every 30 seconds to make sure you always take the best possible route.

\*Live Traffic access is free for the first 2 years following the registration of a new Ford featuring SYNC 3 with navigation; thereafter there is an annual licence fee. Mobile data charges may apply.

**Note** Full SYNC 3 smartphone integration only available with iPhone 5/Android 5.0 (Lollipop) or higher. Some SYNC 3 functions require a data connection, so mobile data charges will apply. To check whether Apple CarPlay and Android Auto are available in your market, please check official Apple CarPlay and Android Auto websites for the latest information. Ford Emergency Assistance is an innovative SYNC feature that uses a Bluetooth®-paired and connected mobile phone to help vehicle occupants initiate a call to the local Communications Center for emergency assistance, including requesting roadside assistance or fuel pump shut off. The feature operates in more than 40 European countries and regions.





Explore your own space.

- Standard
- Optional, at extra cost
- Part of an option pack, at extra cost

	Ford EcoBoost Fastback	Ford EcoBoost Convertible	GT Fastback	GT Convertible	BULLITT
Instruments and Controls					
Door mirrors – Body colour, power/heated, foldable, with Mustang puddle lights and side indicators					
Windscreen wipers – Automatic					
Electric rear window demister					
Gearshift knob – Leather-trimmed					
Gearshift knob – Unique white cue ball					
Handbrake grip – Leather-trimmed					
Ford KeyFree system (includes Ford Power Starter Button)					
Windows – Power front windows with global opening					
Windows – Power rear quarter windows (Convertible only)					
Technology					
Track Applications/Line lock (Line lock feature exclusive to GT series)					
Ford Easy Fuel capless refuelling system					
MyKey (will disable track apps)					
Custom Packs					
Custom Pack 1 – Includes:19" multi spoke premium Luster Nickel painted alloy wheels, Ford SYNC 3 Navigation, B&O audio sound system with twelve premium speakers, Partial leather centre console in ebony, climate controlled front seats, side-windows chrome surround on-Fastback only					
Custom Pack 2 – Includes:19" alloy wheels in gloss Black painted alloy wheels, Ford SYNC 3 Navigation, B&O audio sound system with twelve premium speakers, Partial leather centre console in ebony, climate controlled front seats					
Custom Pack 3 – Includes: 19" Forged alloy wheels in silver, Ford SYNC 3 Navigation, B&O audio sound system with twelve premium speakers, Partial leather centre console in ebony, climate controlled front seats, side-windows chrome surround on-Fastback only					
Custom Pack 4 – Includes: 19" Forged alloy wheels in silver, Ford SYNC 3 Navigation, B&O audio sound system with twelve premium speakers, Partial leather centre console in ebony, climate controlled front seats					

Interior features



Front seats, heated and cooled

Leather-trimmed front seats are heated and cooled, and feature six-way power adjustment. The driver’s seat also includes power lumbar support (not available with Recaro seats).

Illuminated threshold plates

Door threshold plates incorporate an illuminated ‘MUSTANG’ nameplate.





Confidence you can feel.

- Standard
- Optional, at extra cost
- Part of an option pack, at extra cost

<sup>1)</sup>Safety feature.

•Note: A rear-facing child seat should never be placed in the front passenger seat when the Ford vehicle is equipped with an operational front passenger's airbag. The safest place for children is properly restrained on the rear seat.

	Ford EcoBoost Fastback	Ford EcoBoost Convertible	GT Fastback	GT Convertible	BULLITT
Safety					
Airbags – Driver and front passenger's• airbags <sup>1)</sup> , including side (pelvic and thorax) <sup>1)</sup> , driver's knee airbag <sup>1)</sup> , active glovebox with integrated airbag (Fastback only)					
Airbags – Driver and front passenger's• airbags <sup>1)</sup> , driver's knee airbag <sup>1)</sup> , active glovebox with integrated airbag (Convertible only)					
ISOFIX attachment points (rear seats only)					
Security					
Thatcham Category 1 alarm					
Locking wheel nuts					
Remote, power central/double locking					
Brakes					
Ford EcoBoost performance brake package – Larger brake disc with 4–piston callipers					
Brembo™ 6-piston front brake callipers with large discs					
Electronic Stability Control (ESC) <sup>1)</sup> includes electronic brake-force distribution (EBD) <sup>1)</sup> , full speed engine/brake traction control (TCS) <sup>1)</sup>					
Emergency Brake Assist (EBA) <sup>1)</sup>					

Safety and security

	Ford EcoBoost Fastback	Ford EcoBoost Convertible	GT Fastback	GT Convertible	BULLITT
Carpet and Trim					
Floor mats – Front carpet					
Floor mats – Front carpet with unique green stitching					
Rubber floor covering					
Door trim panel – Premium vinyl detail					

Utility





Gauge your performance.

Fuel, Performance and Emissions.

The test used to establish fuel consumption and CO<sub>2</sub> figures has changed to deliver results that are more representative of real life driving. The Worldwide Harmonised Light Vehicle Test Procedure (WLTP) has replaced the old NEDC test. The Fuel Consumption figures shown are derived from the new WLTP test. However, until 6th April 2020, the CO<sub>2</sub> figure shown will be the NEDC equivalent and this will be used to calculate Vehicle Excise Duty.

Understanding fuel data

The table shows the fuel consumption (WLTP) and CO<sub>2</sub> emissions (NEDC equivalent) for each available engine when fitted on a standard specification Ford Mustang (with no options or accessories). Adding options or accessories to your chosen vehicle can impact WLTP fuel consumption and CO<sub>2</sub> emissions. Please speak to your Ford dealer for more information.

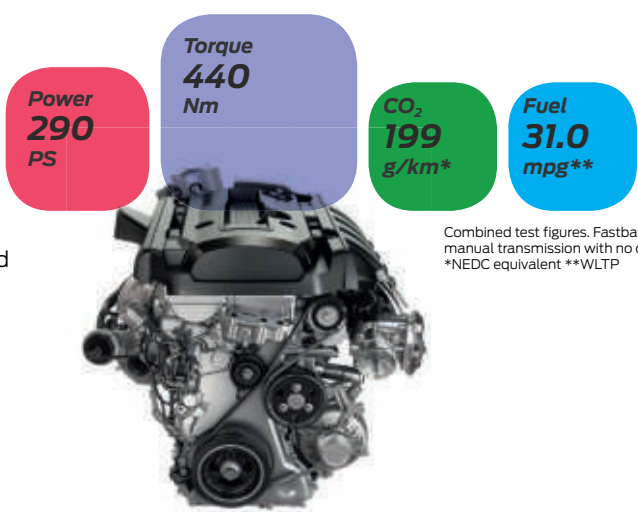
The fuel consumption you achieve in real life conditions and CO<sub>2</sub> produced will depend upon a number of factors including any options and accessories fitted, variations in weather, driving styles and vehicle load.

Engine		2.3L EcoBoost Fastback Manual	2.3L EcoBoost Fastback Automatic	2.3L EcoBoost Convertible Manual	2.3L EcoBoost Convertible Automatic	5.0L V8 Fastback Manual	5.0L V8 Fastback Automatic	5.0L V8 Convertible Manual	5.0L V8 Convertible Automatic	5.0L V8 Fastback Manual - BULLITT
Euro Stage		6.2	6.2	6.2	6.2	6.2	6.2	6.2	6.2	6.2
Fuel type		Petrol	Petrol	Petrol	Petrol	Petrol	Petrol	Petrol	Petrol	Petrol
Maximum power @ RPM		290 PS @5600	290 PS @5600	290 PS @5600	290 PS @5600	450 PS @7000	450 PS @7000	450 PS @7000	450 PS @7000	459 PS @7250
Torque Nm		440	440	440	440	529	529	529	529	529
CO <sub>2</sub> Emissions (g/km) <sup>oo</sup> (NEDC equivalent)		199	205	200	211	277	270	285	279	277
Transmission		6 speed manual	10 speed automatic	6 speed manual	10 speed automatic	6 speed manual	10 speed automatic	6 speed manual	10 speed automatic	6 speed manual
Combined Fuel Consumption (WLTP figures with no options) <sup>oo</sup>										
Combined MPG (L/100km)		31.0 (9.1)	32.5 (8.7)	30.4 (9.3)	31.0 (9.1)	23.7 (11.9)	25.7 (11.0)	23.3 (12.1)	24.1 (11.7)	23.9 (11.8)
Performance**										
Max. speed (mph)		145	145	145	145	155	155	155	155	163
0-62 mph (secs)		5.8	5.5	6.0	5.7	4.6	4.3	4.8	4.5	4.6
Weights and loads										
Kerbweight <sup>†</sup>		1737	1747	1799	1803	1818	1831	1882	1893	1851

<sup>oo</sup>The declared Fuel/Energy Consumptions, CO<sub>2</sub>-Emissions and Electric range are determined according to the technical requirements and specifications of the European Regulations (EC) 715/2007 and (EU) 2017/1151 as last amended. Light Duty Vehicles type-approved using the World Harmonised Light Vehicle Test Procedure (WLTP) have Fuel/Energy Consumptions and CO<sub>2</sub>-Emission information for both New European Drive Cycle (NEDC) and WLTP. WLTP is a new, more realistic test procedure for measuring fuel consumption and CO<sub>2</sub> emissions and will fully replace the NEDC latest by end of the year 2020. The applied standard test procedure enables comparison between different vehicle types and different manufacturers. In addition to the fuel efficiency of a car, driving behaviour as well as other non-technical factors play a role in determining a car's fuel/energy consumption, CO<sub>2</sub> emissions and electric range. CO<sub>2</sub> is the main greenhouse gas responsible for global warming. A guide on fuel economy and CO<sub>2</sub> emissions which contain data for all new passenger car models is available at any point of sale free of charge or can be downloaded under <http://carfueldata.dft.gov.uk>. <sup>†</sup>Represents the lightest kerbweight assuming driver at 75kg, full fluid levels and 90% fuel levels, subject to manufacturing tolerances and options, etc., fitted.

2.3-litre Ford EcoBoost engine

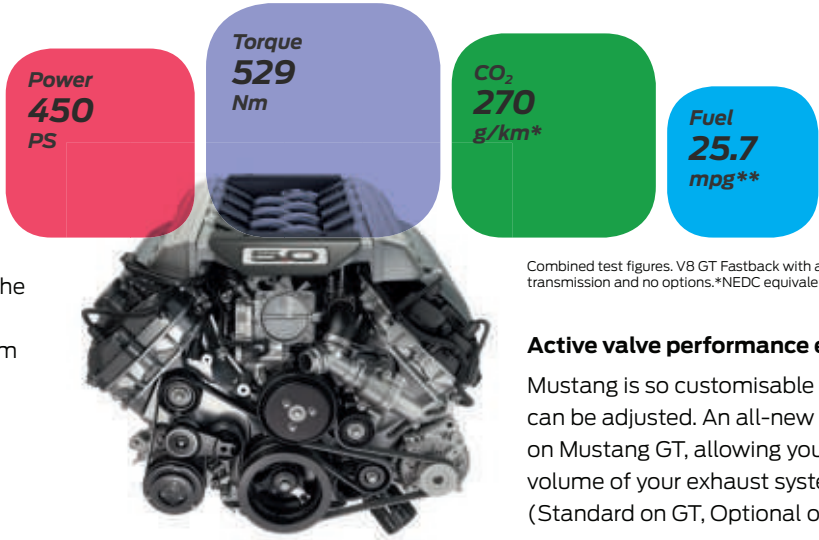
Specially tuned for Ford Mustang, the 2.3-litre Ford EcoBoost engine combines the performance you expect with fuel economy. Turbocharging with Ford's transient overboost technology uniquely calibrated for Mustang, increases torque for wide-open throttle acceleration.



Combined test figures. Fastback with manual transmission with no options. \*NEDC equivalent \*\*WLTP

5.0-litre V8 engine

The acclaimed 5.0-litre V8 is the ideal engine for the Ford Mustang. Upgraded valvetrain and cylinder heads help the engine develop 450 PS and 529 Nm of torque. A specially-developed intake manifold improves low-speed breathing for better fuel efficiency and emissions.



Combined test figures. V8 GT Fastback with automatic transmission and no options.\*NEDC equivalent \*\*WLTP

Active valve performance exhaust

Mustang is so customisable that even its engine note can be adjusted. An all-new active exhaust is available on Mustang GT, allowing you to change the tone and volume of your exhaust system at the push of a button. (Standard on GT, Optional on EcoBoost)

**Note** Engine power output may be affected, depending on the exhaust mode selected.



Enjoy Mustang in dynamic detail.

- Standard
- Optional, at extra cost
- Part of an option pack, at extra cost

#Measured in accordance with ISO 3832. Dimensions may vary dependent on the model and equipment fitted.  
\*Whichever occurs soonest; from date of first registration. Year 1 – unlimited mileage. Subject to terms and conditions.

	Fastback	Convertible
Overall length (mm)	4789	4789
Overall width with mirrors (mm)	2097	2097
Overall width without mirrors (mm)	1916	1916
Overall width with folded mirrors (mm)	1985	1985
Overall height (max) (mm)	1382	1396
Turning circle – Kerb to kerb (m)	12.2	12.2
Load capacity (litres)*	408	332
Fuel tank capacity (litres)		
Petrol (Ford EcoBoost)	59	59
Petrol (GT)	61	61

Dimensions

408L

Fastback load capacity

332L

Convertible load capacity

Warranty	Fastback	Convertible
3-year/60,000 miles *Ford Warranty	<div></div>	<div></div>
1-year/unlimited miles *Ford Assistance Roadside Cover (Europe)	<div></div>	<div></div>
1-year/unlimited miles *Paint Warranty	<div></div>	<div></div>
12-year/unlimited miles *Perforation Warranty	<div></div>	<div></div>

Warranty





# Making ownership easy and affordable.

Take advantage of a range of invaluable services and make the most of your car.

## FORD SERVICE

Allows you to relax knowing we're always by your side.

With Ford, the service doesn't end when you leave the showroom. Ford Service is designed to keep your Ford in great condition and help you make the most of your car – throughout its life.

- Comprehensive service and maintenance plans
- Use of quality Ford parts for added peace of mind
- Ford trained technicians using the latest diagnostic equipment and tools
- Ford Online Service Booking
- One Call for everything Ford 0203 564 4444
- Ford Accident Management, service free to all drivers

Also, every Ford vehicle comes with 12 months UK & European Roadside Assistance from the date of registration. This can be extended for a further 12 months when your vehicle has a Scheduled service at a participating Ford Dealer.

## FORD INSURE

At Ford Insure we provide insurance designed specifically for Ford owners. We have comprehensive cover which includes features and benefits that really matter to you, along with first class service.

- Repairs carried out by Ford-trained technicians at Ford Accident Repair Centres
- Genuine Ford parts with a 5 year guarantee
- Small replacement car for the duration of your repairs
- Ford Insure experts at UK call centres
- 24 hour accident recovery
- Unlimited cover for standard fit in-car entertainment equipment
- Up to 90 days European cover
- Replacement child seats in the event of an accident

## FORD PROTECT

Extend your warranty up to 5 years/100,000 miles with Ford Protect.

Extend your standard 3-year/60,000 miles warranty and enjoy worry-free motoring for many years to come. Ford Protect provides a range of key benefits including:

- High flexibility in duration and mileage
- Cover against unexpected electrical and mechanical repair costs in the UK and Europe
- With Ford Protect, the price of parts and labour are guaranteed for the length of your plan
- Help prolong the lifespan of your Ford vehicle
- Help protect your vehicle resale value

To help increase potential resale value, Ford Protect New Vehicle Warranties are transferable to the new owner should you decide to sell your vehicle.

Ford Protect terms and conditions apply see [ford.co.uk/extended-warranties](http://ford.co.uk/extended-warranties) for more information.

## FORD Protect Extended Warranty for New Vehicles

	Total Mileage (mls)
4 Year Protection	80,000 mls
5 Year Protection	100,000 mls



Terms and conditions apply.

Ford Insure is sold and administered by Europa Group Limited which is authorised and regulated by the Financial Conduct Authority. Registration number 309794. Registered in England with company number 3279177. Registered office: Europa House, Midland Way, Thornbury, Bristol, BS35 2JX.





FORD Mustang Next steps



**try**  
Visit your FordStore and test drive the new Mustang for yourself.  
Find your local Dealer at:  
<https://www.ford.co.uk/dealer-locator>



**build**  
Go online and build and price your new Mustang to your exact specification at: <https://www.ford.co.uk/cars>



finance

When it comes to financing your car, our size and expertise means we're well placed to provide you with a wide range of finance products.

\*Ford Credit provides a range of finance products for your car whether you are a private or business user.

^Ford Lease specialises in contract hire and leasing and provides an alternative range of finance plans which can be tailored to suit your business.

For more information about our finance products visit <https://www.ford.co.uk/finance/ford-credit>



own

When you drive away in your new car, we're with you all the way. Ford has a large authorised service network to help you keep your car in the best condition.

And should your new Ford ever require accident repair, a Ford Accident Repair Centre is the best place to get your car back to its pre-accident condition and on the road as quickly as possible.



contact

Ford Credit Customer Services 0345 712 5490  
Ford Lease Customer Services 0344 600 1405

Calls to 0344 and 0345 numbers are charged at the same rate as a standard 01 or 02 geographic number, even when calling from a mobile.

\*Finance subject to status. Guarantees may be required. Freepost Ford Credit.

Ford Credit is a trading style of FCE Bank plc. Which is authorised by the Prudential Regulation Authority and regulated by the Financial Conduct Authority and the Prudential Regulation Authority under firm reference number 204469.

^Ford Lease is provided by ALD Automotive Limited acting as Ford Lease BS16 7LB. ALD is registered in England No. 987418. ALD is authorised and regulated by the Financial Conduct Authority.



FordPass

A Smarter Way to Move.  
Learn more at: <https://www.fordpass.co.uk>



	FastBack	Convertible
EcoBoost		
2.3l EcoBoost Manual	42E	45E
2.3l EcoBoost Automatic	42E	45E
GT		
5.0l V8 Fastback Manual	45E	47E
5.0l V8 Fastback Automatic	45E	47E

Insurance

**Illustrations, descriptions and specifications.** This catalogue was correct at the time of going to print. However, Ford policy is one of continuous product development. The right is reserved to change specifications, colours and recommended prices of the models and items illustrated and described in this publication at any time. For the latest details always consult your Ford Dealer. **Optional equipment.** Throughout this publication, wherever a feature is described as being an 'Option' or 'Option Fitment/Pack' etc, you should assume that it will be at extra cost to the base vehicle, unless specifically stated to the contrary. All models and colour combinations are subject to availability. **Note.** Some images portrayed are of a pre-production model and/or are computer generated, therefore, the design/features on the final version of the vehicle may differ in various respects. In addition, some of the features shown on the vehicles may be optional. **Note.** This brochure contains both original Ford accessories as well as a range of products from our suppliers. ♦The identified accessories are carefully selected third party supplier branded accessories which do not come with a Ford warranty but are instead covered by the third party supplier's own warranty, the details of which can be obtained from your Ford Dealer. **Note.** The Bluetooth® word mark and logos are owned by the Bluetooth SIG, Inc. and any use of such marks by Ford Motor Company is under licence. The iPod word mark and logos are the property of Apple Inc. Other trademarks and trade names are those of their respective owners. **Note.** Some driver assistance features and safety features described in this brochure are designed to function using sensors, whose performance may be affected under certain weather or environmental conditions. **The Government fuel figures** do not express or imply any guarantee of the fuel consumption of any particular vehicle. The vehicles themselves have not been tested and there are inevitably differences between individual vehicles of the same model. In addition, a vehicle may incorporate particular modifications. Furthermore, the driver's style and road and traffic conditions, as well as the extent to which the vehicle has been driven and the standard of maintenance, will affect its fuel consumption. **Insurance groups** are only as recommended by the Association of British Insurers. You should always consult your insurance adviser for confirmation.



Ford and BP – working together to reduce fuel consumption and emissions.

**Ford One Call**  
In the unlikely event that your Ford Dealer can't help you or if you need to speak to us directly, call 0203 564 4444

**Ford Rental - local service nationwide**  
Car and Van rental from our latest model range.  
Contact your local Ford Dealer for more information

**Ford Motability**  
Call our Ford Motability team on 0345 6040019

**Finance**  
Ford Credit Customer Services 0345 712 5490  
Ford Lease Customer Services 0344 600 1405  
Calls to 0344 and 0345 numbers are charged at the same rate as a standard 01 or 02 geographic number, even when calling from a mobile.

Published by Ford Motor Company Limited,  
Brentwood, Essex, England.  
Registered in England No. 235446.  
FA 1601/5  
BJN 206629. FoE H65E.  
PN 874511/1118/20mGBR en  
September 2018  
© Ford Motor Company Limited.

MY 2019 GBR en





[www.ford.co.uk](http://www.ford.co.uk)



Go Further