

1 9 9 8 C H E V R O L E T

ASTRO VAN



LIKE A ROCK





Jeep
Astro LT All-Wheel-Drive in Dark Forest Green Metallic.

UNCOMPROMISED CAPABILITY IN A CHEVY TRUCK.

With Chevy Astro, you're not just getting a midsize van, you're also getting a Chevy Truck — the most dependable, longest-lasting trucks on the road. And, that means uncompromised capability, impressive roominess and unmatched towing capacity in its class. It also means incredible power, ruggedness and strength — all the things you need for the life you lead.*

*Dependability based on longevity: 1981–1996 full-line light-duty truck company registrations. Excludes other GM divisions.





Astro LT All-Wheel-Drive with optional Two-Tone Appearance in Dark Purple Metallic with Silvermist Metallic cladding.

THE PERFECT SKI LIFT.

The U.S. Ski Team takes on some of the most rugged ski mountains known to man. So, it's only fitting that they get there in this rugged AWD midsize van. As the Official Vehicle of the U.S. Ski Team, Chevy Truck helps make it possible for our athletes to compete all over the world. Like them, we know a thing or two about conquering challenges. And now that they're depending on Astro to get to their next one, we're happy we can give them a lift.





Astro LT interior with optional 7-passenger seating, Special Leather seating surfaces and center-row audio controls. Shown in Neutral.

MEET THE COMFORTABLE SIDE OF RUGGED.

Despite its rugged demeanor and uncompromised capability, Astro knows how to pamper you and your family in style. In fact, it is totally focused on comfort, with features that let you indulge yourself in luxury and convenience that are literally at your fingertips.

SIX-WAY POWER SEATING.

Available for either just the driver seat, or for both driver and front-passenger seats, power seat controls are located inboard for convenient, easy operation.

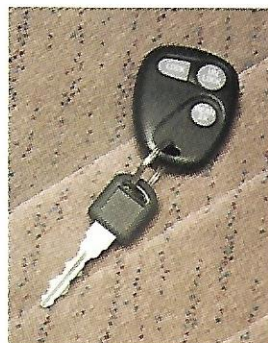


HOMELINK TRANSMITTER.

This optional feature allows you to program your garage doors, electric gates or even your home's lighting/security systems into a permanently mounted transmitter located in the available overhead console.

PREMIUM SOUND.

Delco Electronics ETR AM/FM premium sound systems are available with a cassette player, compact disc player or with both cassette and CD players, as shown here.

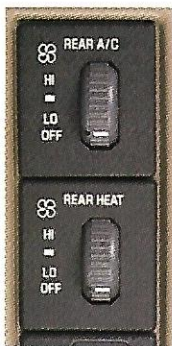


REMOTE KEYLESS ENTRY.

This available system provides remote locking and unlocking from up to 30 feet away, and also activates interior lighting. A single key operates the Astro side and rear doors and the ignition, enhancing convenience as well as security.

REAR HEATING/ AIR CONDITIONING.

Air conditioning is standard in front. Optional rear air conditioning and an optional rear heater are available for enhanced comfort of rear passengers.



CENTER-ROW AUDIO CONTROLS.

Optional rear-seat audio controls and headphone jacks enable center-row passengers to listen to a different music source — at a different volume — than front-seat passengers.



Astro LT instrument panel. Shown with optional equipment.

ENJOY A COMMANDING VIEW OF THE ROAD.

From the Astro driver seat, you're always in control. Analog instrumentation is easy to read and controls are right where you expect them to be. This total focus on convenience and function creates an exceptionally pleasant driving environment that keeps you well informed at all times. And, the high Astro seating position helps provide you with a commanding view of the road and the world around you.



SEVEN-PASSENGER COMFORT.

Seating for eight passengers is standard with Astro LS and LT models and optional with the Astro trim level (which includes standard seating for five). A seven-passenger seating configuration, with dual front-center-row bucket seats and three-passenger rear bench seat, is available with all Astro models. Whichever seating configuration you choose, you and your passengers will travel in spaciousness and comfort. Shown: Astro LT with standard seven-passenger seating.



VERSATILITY FOR WORK AND PLAY.

With its removable bench seats, the versatile Astro is ready to fit your needs for passenger space or cargo space. Remove the rear bench seat and there's more than enough room for your tools and supplies. And, when it's time for fun, you can load golf clubs side by side or carry all the gear you need for the family vacation. Shown: Astro LT with the available Seven-Passenger Seating Package, with rear-row bench seat removed.



UNLIMITED CAPABILITY.



FREEDOM OF CHOICE.

The beauty of Astro is the ease with which it changes to meet your changing needs. A variety of seating packages ensures that you have the flexibility you demand — for everything from that Saturday afternoon picnic to that trip to the nursery. Shown: Astro LS with standard eight-passenger seating with center-row bench seat removed.



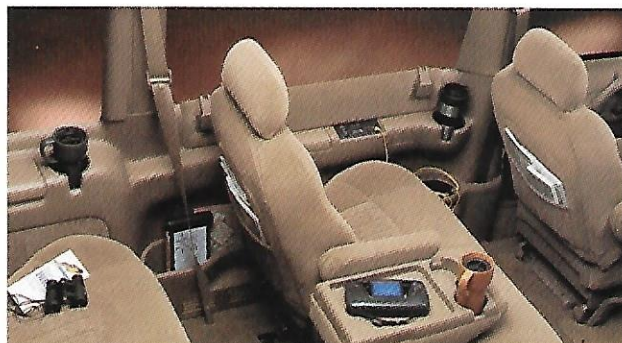
AN ABUNDANCE OF USABLE CARGO SPACE.

Exceptionally versatile and accommodating, Astro can be quickly and easily reconfigured to provide up to 170.4 cu. ft. of cargo space. That's enough room to close the rear doors on a 4' x 8' sheet of plywood, load up with a week's worth of camping gear or handle your everyday errands — with room to spare. Shown: Astro LS with center- and rear-row bench seats removed.



Astro LT All-Wheel-Drive with optional Two-Tone Appearance in Light Carmine Red Metallic with Light Autumnwood Metallic cladding. Shown with optional rear Dutch doors and optional chrome-clad

Whether it's weekday errands or a weekend camping trip, Astro offers all the versatility you need. In addition to abundant, easy-to-access cargo space, there are also plenty of storage and convenience features that help make every trip more pleasant.



STORAGE FOR EVERYONE AND EVERYTHING.

Storage for everything from beverages and maps to packages and toys is made possible by an abundance of storage areas in all seating rows.

AS VERSATILE AS YOU ARE.



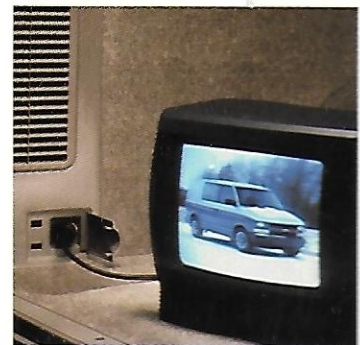
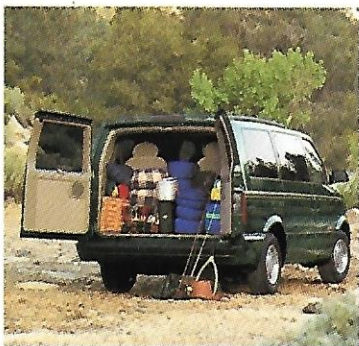
styled-steel wheels.

DUAL REAR PANEL DOORS.

Standard rear panel doors open wide for convenient and easy access to a spacious cargo area. Rear Dutch doors with liftglass are optional.

REMOVABLE CARGO NET.

Small packages, groceries and other loose items stay upright and secure with the removable cargo net.



CARGO-AREA POWER OUTLET.
An outlet in the rear cargo area provides convenient electric power for camping equipment, tools and electronic accessories.



Astro LS interior in Neutral. Shown with standard eight-passenger seating arrangement.

In every way, Astro was designed for the way you really live. That means you'll find an abundance of practical and functional features dedicated to your comfort and convenience. From the removable reclining center- and rear-row bench seats to multiple storage bins and beverage holders, plus power outlets for your electronic accessories, Astro ensures that you and your family are comfortable enough to go the distance.



SCOTCHGARD™ PROTECTOR.

To help resist stains and make cleanups quick and easy, Astro floor carpeting and cloth seats are mill-treated with Scotchgard™ Protector.

PRACTICAL, FUNCTIONAL, COMFORTABLE.



CENTER-CONSOLE STORAGE.

A convenient front center console includes two beverage holders, a lighted glove box and a passenger-side map net.



FRONT AUXILIARY POWER OUTLETS.

Two covered power outlets in the front center console accommodate electronic accessories. A third power source is provided by the lighter receptacle.



CENTER OVERHEAD CONSOLE.

To enhance convenience, the available overhead console (shown with optional HomeLink) includes an electronic compass, outside temperature readout, storage compartments and four adjustable reading lights.





Astro LT All-Wheel-Drive in Dark Copper Metallic.

KEEPING YOUR FAMILY SAFE AND SECURE.

Safety and security are among your top priorities in a vehicle — especially when it comes to the vehicle for your family. That's why every Astro is equipped with features designed to help keep your family safe and enhance your peace of mind. It's all part of a comprehensive safety system designed into the vehicle, including Next Generation driver and front-passenger air bags,* Daytime Running Lamps and four-wheel ABS. You can also choose the added traction of the Astro All-Wheel-Drive model. And all Astro models now feature the security of a standard Passlock® theft-deterrent system. It's just one more way Astro helps you relax and focus on what really matters — your family.

**Always wear safety belts, even with air bags. Also see note below on child safety. Next Generation driver and front-passenger air bags will be available interim 1998 model year.*

DAYTIME RUNNING LAMPS.

During daytime driving situations, reduced-intensity low-beam headlamps come on automatically to alert other roadway users to your oncoming vehicle.



ALL-WHEEL-DRIVE CONFIDENCE.

The optional Astro AWD model provides automatic full-time regulation of power flow to all wheels. As it senses road conditions, the system transfers engine torque to the front or rear wheels better able to provide traction.

INTEGRAL CHILD SAFETY SEATS.

Optional dual child safety seats for center-row seating are designed for use by children at least one year of age, who are between 22 and 60 lbs. in weight and between 33.5 and 51 inches in height, and who are capable of sitting upright, alone.

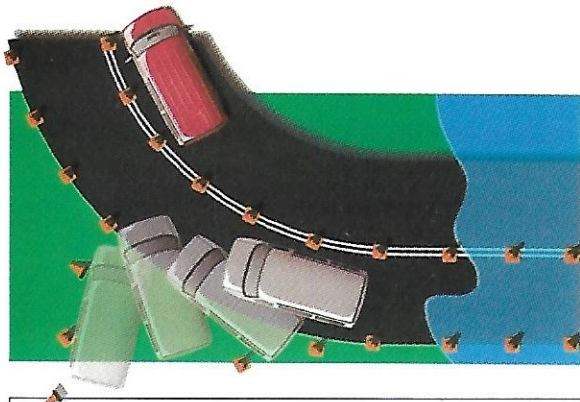


SIDE DOOR BEAMS.

Double-wall steel front doors and the sliding side door are reinforced with structural steel beams designed to help avoid intrusion into the passenger compartment during shallow side-angle collisions.

STANDARD FOUR-WHEEL ANTI-LOCK BRAKE SYSTEM.

Standard on every Astro, four-wheel ABS is designed to help keep you in control by reducing wheel lockup while braking hard on most slippery surfaces.



PASSLOCK® THEFT-DETERRENT SYSTEM.

All Astro models now feature the security of the Passlock® theft-deterrent system as standard equipment. Passlock® automatically disables the vehicle's ignition system if the proper key is not used.

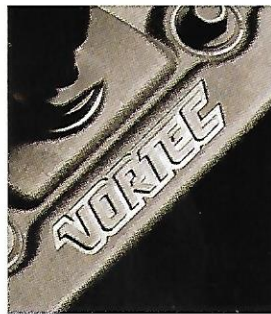
A NOTE ON CHILD SAFETY: Children are generally safer if they ride in a rear seat using the appropriate child safety seats and restraints, which is why General Motors recommends that child safety seats be properly secured in a vehicle's rear seat. This includes an infant or child riding in a rear-facing seat or a forward-facing child seat, and an older child riding in a booster seat. See your vehicle's owner's manual and child safety seat's instructions for more information.



Astro LS in Silvermist Metallic. Shown with optional luggage carrier.

THE CONFIDENCE OF VORTEC POWER.

With the Vortec 4300 V6 SFI — the largest V6 engine in its class* — Astro provides power when you need it most. That means real truck muscle that helps you tow, haul and pass with confidence. It is matched to an electronically controlled 4-speed automatic transmission that's been enhanced for 1998 to provide even smoother shift points. From strong, dependable performance and smooth, quiet operation to convenient, easy ownership, the Vortec 4300 V6 SFI delivers, mile after mile. It's exactly what you expect from Astro.



STANDARD VORTEC 4300 V6.

The largest V6 engine in its class, the Vortec 4300 V6 SFI delivers outstanding low-end torque to get heavy loads moving, as well as abundant high-end torque for towing on grades.

100,000-MILE MAINTENANCE.

Platinum-tip spark plugs help Vortec engines travel up to 100,000 miles before their first scheduled tune-up.[†] The recommended engine coolant change interval is up to 150,000 miles or five years, whichever comes first.[†]



EFFICIENT FUEL DELIVERY.

Sequential Fuel Injection (SFI) ensures precise, high-pressure fuel delivery to each cylinder, making efficient use of every drop of gasoline.



POWERTRAIN SPECIFICATIONS

	VORTEC 4300 V6 SFI ^{1, 2} (RPO L35)
ENGINE	
Displacement (liters)	4.3
HP @ RPM	190 @ 4400
Torque (lb.-ft.) @ RPM	250 @ 2800
TRANSMISSION AVAILABILITY	
4-Speed Electronically Controlled Automatic with Overdrive ³	S

S — Standard. **1** Sequential Fuel Injection **2** Includes engine oil cooler, heavy-duty radiator and transmission oil cooler. **3** Includes brake/transmission shift interlock.

*Excludes other GM vehicles. †Maintenance needs vary with different uses and driving conditions. See your owner's manual for more information.



Astro LT with optional Two-Tone Appearance in Medium Cadet Blue Metallic with Silvermist Metallic cladding. Shown with additional options.



THE TOWING CHAMPION OF ITS CLASS.

With its uncompromised Chevy Truck strength and the power of a proven Vortec 4300 V6 SFI engine, Astro offers towing capacity unmatched by any other minivan competitor. In fact, Astro out-tows most front-wheel-drive minivans by a ton or more.*

TRAILERING CAUTION.

If you don't use the correct equipment and drive properly, you can lose control of your vehicle when you pull a trailer. For example, if the trailer is too heavy, your vehicle brakes may be less effective. You and your passengers could be seriously injured. Pull a trailer only after you have taken the following steps.

TRAILER BRAKES.

If your trailer weighs more than 1,000 lbs. loaded, then it must have its own adequate brakes. Be sure to read and follow the instructions for the trailer brake controller so that it is installed, adjusted and maintained properly.

- Don't tap into your vehicle's brake system if the trailer's brake system will use more than 0.02 cu. in. of fluid from your vehicle's master cylinder. If it does, neither braking system will work well. You could even lose your vehicle brakes.
- The trailer brake parts must be able to take 3,000 psi of pressure. If not, the trailer brake system must not be used with your vehicle. If everything checks out thus far, have a qualified

individual make the brake fluid tap at the port on the master cylinder that sends fluid to the rear brakes. Don't use copper tubing, because it will bend and ultimately break. Use only steel brake tubing.

HITCHES.

It's important to have the correct hitch equipment. Crosswinds, large trucks going by and rough roads are just a few of the reasons why you'll need the right hitch. Here are some rules to follow:

- If you'll be towing a trailer that, when loaded, will weigh more than 3,500 lbs., be sure to use a frame-mounted, weight-distributing hitch and sway control of the proper size. This equipment is very important for proper vehicle loading and good handling when you're driving.
- If you have to make any holes in the body of your vehicle to install a trailer hitch, be sure to seal the holes if you ever remove the hitch. If they're not sealed, dirt, water and deadly carbon monoxide from the exhaust can get into your vehicle.

NOTE: Your vehicle may require additional special equipment to tow the maximum trailer weights listed here. The weight-carrying hitch limit for Astro passenger van models is a 3,500-lb. trailer with 350 lb. tongue weight. A weight-distributing hitch is required with trailer weights over 3,500 lbs.

TRAILERING DATA

ENGINE/TRANSMISSION	VORTEC 4300 V6/AUTOMATIC		
MODEL	MAX. TRAILER WEIGHT ¹	MAX. TONGUE LOAD	REQ. AXLE RATIO
Astro	4500	550	3.23
	5000	600	3.42
	5500	650	3.73
Astro All-Wheel-Drive	4500	550	3.42
	5000	600	3.73

¹ Maximum trailer weight is calculated assuming the driver and one passenger are in the tow vehicle and it has all required trailering equipment. The weight of additional optional equipment, passengers and cargo in the tow vehicle must be subtracted from the maximum trailer weight. • Any Astro can tow a 3,500-lb. trailer without special equipment.

• Astro models towing a trailer rated over 3,500 lbs. require optional trailering special equipment (RPO Z62), which includes a weight-distributing hitch platform and 8-lead trailer wiring harness.

NOTE: The vehicle owner is responsible for obtaining the hitch ball, a hitch of the proper size, type and capacity, and other appropriate equipment required to safely tow both the trailer and the load that will be towed. Ask your Chevrolet dealer for advice about towing and the proper towing equipment for your new vehicle.

GROSS COMBINATION WEIGHT RATINGS (GCWRS)

USING GCWRS TO DETERMINE ENGINE, TRANSMISSION AND REAR AXLE RATIO Perhaps you prefer to use Gross Combination Weight Ratings (GCWRs) to determine the powertrain you will require to tow a specific trailer with your Astro. The chart below shows the maximum allowable GCWR based on all available Astro engine and rear axle ratio combinations with the standard automatic transmission. The GCWR includes the total loaded weight of both Astro and the trailer.

GCWR (LBS.)	ENGINE AVAILABILITY	AXLE RATIO
9000	Vortec 4300 V6	3.23
9500	Vortec 4300 V6	3.42
10,000	Vortec 4300 V6	3.73

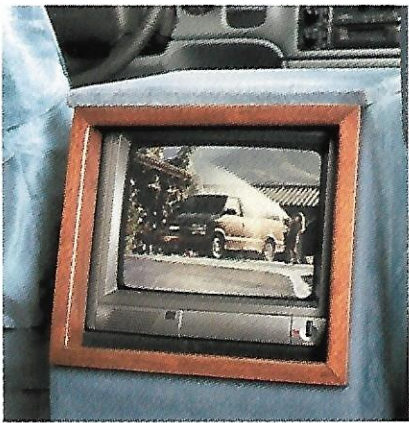
NOTE: Model availability of the above Astro driveline combinations must be verified by your Chevrolet dealer for correct emissions equipment.

*When properly equipped. Includes passengers, equipment and cargo. Excludes other GM vehicles.



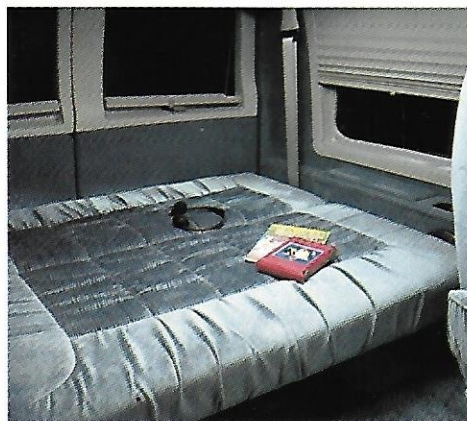
Astro with optional rear Dutch doors and a conversion package provided by an independent supplier.

There's no better way to personalize your Astro than by equipping it with a conversion package. Provided by an independent supplier, an Astro conversion package will enhance your Astro with the comforts and conveniences you need the most — and make your Astro ownership experience even more enjoyable. Your Chevy Truck dealer has full details on how you can have the Astro of your choice converted into the ultimate recreational vehicle.



ENTERTAINMENT CENTER.
Accessories such as this TV/VCR can transform your Chevy Astro conversion into a self-contained entertainment center.

ASTRO CONVERSION VAN ... EXTRA LUXURY FOR YOUR ASTRO.



REAR SOFA BED.

For the ultimate in versatility, your Astro Van conversion can be upfitted with such attractive features as a rear seat that easily folds into a roomy and comfortable sofa bed.

REAR-CABIN CONVENIENCE.

When your Astro Van conversion is upfitted with a rear audio center, your journeys are even more enjoyable.



NOTE: Conversion vans are supplied to Chevrolet by outside manufacturers independent of Chevrolet. Chevrolet is not responsible for the safety or quality of design features, materials or workmanship of any alterations by any such manufacturer. Chevrolet does not warrant these alterations. See page 25 for further information about alterations and warranties.



Astro LT All-Wheel-Drive with optional Two-Tone appearance in Medium Cadet Blue Metallic with Silvermist Metallic cladding and additional options. Upfitted with mobility aids from an independent supplier.



SARAH WILL IS DRIVEN TO BE THE BEST.

Sarah Will is an award-winning athlete at the top of her field. She also uses a wheelchair. Winner of five Paralympic gold medals for mono-skiing, this reigning U.S. national champion is also a champion mountain biker and a high-profile advocate for athletes with disabilities. A member of Chevrolet Motor Division's "Barrier Breakers," an association of athletes with disabilities, Sarah uses a specially equipped Chevy Astro. Spacious, versatile and highly functional, Astro is an ideal vehicle for mobility aids and adaptive equipment for drivers and passengers. And, the truck-tough Astro takes Sarah wherever she needs to go. "My All-Wheel-Drive Astro gives me confidence to make it to my ski events safe and on time," she says. "It has pickup and power on the mountain passes here in Colorado. And, even though I'm a small person, it gives me good visibility because I sit up high. All of the controls are at my fingertips, too." In everything she does, Sarah Will is driven by a simple idea: If you're going to compete, you may as well be the best. Sarah relies on her accomplishments — and her Chevy Astro — to inspire Americans with and without disabilities. "My Astro makes life so much easier."

NOTE: The GM Mobility Program For Persons With Disabilities offers assistance and services that can help you obtain aftermarket adaptive equipment needed to take to the road. Please see page 27 for more information about this program.



Astro LT All-Wheel-Drive in Light Autumnwood Metallic.

GENUINE CUSTOMER CARE. YOU NEVER TRAVEL ALONE.

NEW VEHICLE LIMITED WARRANTY

This warranty is for GM vehicles registered in the United States. Please see your Chevrolet dealer for complete terms and conditions of this New Vehicle Limited Warranty.

WHAT IS COVERED FOR 3 YEARS/36,000 MILES:*



The complete vehicle



Sheet-metal coverage
• Corrosion coverage
• Rust-through coverage*



Tires



Repairs made to correct any vehicle defect



Towing to your nearest Chevrolet dealership



No charge for warranty repairs.

*Whichever comes first. †6 years or 100,000 miles, whichever comes first

AN IMPORTANT NOTE ABOUT ALTERATIONS AND WARRANTIES

Installations or alterations to the original equipment vehicle (or chassis) as distributed by General Motors are not covered by the General

Motors New Vehicle Warranty. The special body company, assembler, equipment installer or upfitter is solely responsible for warranties on the

body or equipment and any alterations for any effect of the alterations) to any of the parts, components, systems or assemblies installed by GM.

COURTESY TRANSPORTATION

Customers who purchase or lease a 1998 Chevrolet Astro are eligible for Courtesy Transportation (at no charge) when their vehicles are left at a participating dealership for repairs

covered under the 3-year/36,000-mile New Vehicle Limited Warranty. Courtesy Transportation, at participating dealers only, may include shuttle service, expense reimbursement

or, if the repair requires the vehicle to stay at the dealership overnight, vehicle rental. Actual services may vary at the election of the participating dealer. See your dealer for details.

ROADSIDE ASSISTANCE*

Roadside Assistance service is provided through a toll-free 800 number, 24 hours a day, 365 days a year. Roadside Assistance advisors can assist with minor mechanical problems over the phone or coordinate a variety of services through Chevrolet dealers' preferred service providers.

BASIC CARE PROVIDES:



Toll-free access
1-800-CHEV-USA



Basic over-the-phone technical advice



Free towing to nearest dealer for warranty repairs



Dealer services at reasonable cost (i.e., wrecker services, locksmith/key service, glass repair, etc.).

COURTESY CARE, WHICH APPLIES FOR 3 YEARS/36,000 MILES, PROVIDES:



Basic Care services



Free fuel delivery



Free locksmith/key service (when keys are lost on the road or locked inside)



Free non-warranty towing



Free flat tire change service



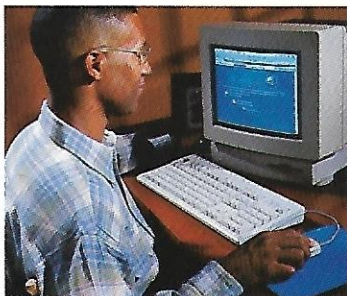
Free jump start.

*Roadside Assistance membership is free. Some services may incur costs. Courtesy Care is available to retail, retail lease and corporate lease customers operating 1994 and newer Chevrolet vehicles for a period of 3 years/36,000 miles. All Courtesy Care services associated costs must be prearranged by Chevrolet Roadside Assistance or dealer service management and must be driver-initiated. Basic Care and Courtesy Care are not part of or included in the coverage provided by the New Vehicle Limited Warranty. Chevrolet reserves the right to modify or discontinue Basic Care and Courtesy Care at any time. See dealer for complete details of the Chevrolet Roadside Assistance Program.



Astro LS with optional Two-Tone Appearance in Teal Blue Metallic with Silvermist Metallic cladding and additional options.

ADDITIONAL INFORMATION



PLEASE CONTACT US ...

For any additional information on 1998 Chevrolet car or truck products call **1-800-950-2438** or visit us on the Internet at <http://www.chevrolet.com>

CUSTOMER ASSISTANCE CENTER.

The Chevrolet Customer Assistance Center has a special toll-free number **1-800-222-1020**. It puts you in contact with experts who can handle any product or service questions you may have with your new Astro Van.

SMARTLEASE BY GMAC.

SMARTLEASE by GMAC makes it easy to enjoy the excellence of Astro Van. With SMARTLEASE, qualified customers can be approved in about one hour, and you'll enjoy low SMARTLEASE monthly payments. Plus SMARTLEASE offers you choices at the end of your lease. You can either buy your Astro Van at a price guaranteed up front, or return your truck with no other obligations — providing the terms of the lease have been met. For more information about SMARTLEASE or any of the other quality GMAC financing options, see your Chevy dealer or call **1-800-32-SMART**.

TURN PLASTIC INTO STEEL WITH THE GM CARD®.

The GM MasterCard® with no annual fee (standard GM Card only) gives you an important financial advantage on your next purchase or lease of a GM vehicle. Use The GM Card® for purchases and you'll receive up to 5 percent of that purchase



amount in GM Card Earnings. You can earn as much as \$500 per account year, for a maximum of \$3,500 over a period of seven years. Your GM Card Earnings are over and above any other discount or incentive. To request your GM Card, call **1-800-GM-CARD**.

THE GM MOBILITY PROGRAM FOR PERSONS WITH DISABILITIES.

We invite your inquiries about the GM Mobility Program for Persons with Disabilities. The program can reimburse you up to \$1,000 toward any aftermarket driver or passenger adaptive equipment you may require for your 1998 Chevy Astro Van, and can set up complete GMAC* financing for you, too. The program can also provide you with free resource information such as area driver assessment centers and mobility equipment installers. See your Chevy dealer for more details or call this toll-free number for more information **1-800-323-9935**. Text telephone (TTY) users, call **1-800-833-9935**.

*Available to qualified applicants

UPDATED SERVICE INFORMATION.

Chevrolet regularly sends its dealers useful service bulletins about Chevrolet products. Chevrolet monitors product performance in the field. We then prepare bulletins for servicing our products better. Now you can get these bulletins, too. Ask your dealer or for ordering information, call toll free **1-800-551-4123**.

ASSEMBLY.

Chevrolet trucks are assembled by different operating units of General Motors, its subsidiaries or suppliers to GM worldwide. Chevrolet trucks incorporate thousands of components produced by different operating units of GM, its subsidiaries or suppliers to GM worldwide. We sometimes find it necessary to produce Chevrolet trucks with different or differently sourced components than originally scheduled. All such components have been approved for use in Chevrolet trucks and will provide the quality of performance associated with the Chevrolet name. Since some options may be unavailable when your vehicle is assembled, we suggest that you verify that your vehicle includes the equipment you

ordered or, if there are changes, that they are acceptable to you.

ENGINES.

Chevrolet trucks are equipped with engines produced by different operating units of GM, its subsidiaries or suppliers to GM worldwide.

CORROSION PROTECTION.

Chevrolet trucks are designed and built to resist corrosion. All body sheet-metal components are warranted against rust-through corrosion for 6 years/100,000 miles (whichever comes first). Application of additional rust-inhibiting material is not required and none is recommended. See your Chevrolet dealer for terms of this limited warranty.

A WORD ABOUT THIS BROCHURE.

We have tried to make this brochure as comprehensive and factual as possible. We reserve the right, however, to make changes at any time, without notice, in prices, colors, materials, equipment, specifications, models and availability. Since some information may have been updated since the time of printing, please check with your Chevrolet dealer for complete details.

GM PROTECTION PLAN.

The available GM Protection Plan offers service protection in addition to that provided by GM New Vehicle Limited Warranty. Ask your dealer about it. Coverage available only in the U.S. and Canada.

Chevrolet, the Chevrolet Emblem, General Motors, GM, GM Emblem, Astro, TheftLock, ETR, Delta, Solar-Ray, and Passlock are registered trademarks of the General Motors Corporation. Chevy and Vortec are trademarks of the General Motors Corporation. GMAC and SmartLEASE are registered trademarks of the General Motors Acceptance Corporation. "Scotchgard" is a registered trademark of 3M. HomeLink is a registered trademark of the Proxip Corp. SEGA Genesis is a trademark of SEGA. TM & © Marvel Characters, Inc. All rights reserved. © 1997 General Motors Corp. All rights reserved.



TWO-TONES, WHEELS, MODELS AND DIMENSIONS.

TWO-TONE APPEARANCE.

You can personalize your Astro LS or LT even more with the addition of a Two-Tone appearance option.

There are 15 Two-Tone combinations available. See your dealer for details.



ARGENT-PAINTED STEEL WHEEL (15" x 6").

Includes bright and black center cap. Standard with Base trim.



SILVER-PAINTED STYLED-STEEL WHEEL (15" x 6.5").

Includes bright center cap. Optional (RPO PA6) with Preferred Equipment Group (PEG) 1SA; included with PEG Group 1SB.



CHROME-GLADDENED STYLED-STEEL WHEEL (15" x 6.5").

Includes bright center cap. Optional (RPO PC2) with all trim levels; included with LS trim Preferred Equipment Group 1SC.



BRUSHED-ALUMINUM WHEEL (15" x 6.5").

Optional (RPO PF3) with all trim levels; included with LS trim Preferred Equipment Group 1SD and with LT trim.

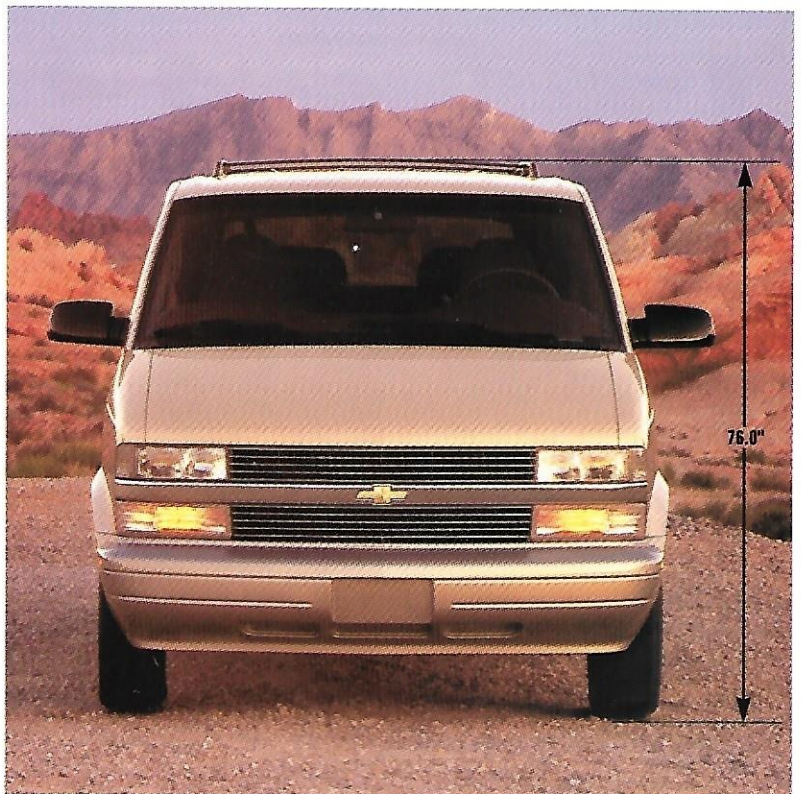
MODEL SELECTOR

MODEL	GVWR (LBS.)	TRIM LEVEL AVAILABILITY		
		BASE	LS	LT
Astro Van	5950	S	O	O
Astro Van All-Wheel-Drive	6100	S	O	O

S—Standard O—Optional

INTERIOR DIMENSIONS AND CARGO VOLUME

INTERIOR DIMENSIONS (IN.)	
Floor-to-ceiling height	47.2
Cargo floor width @ wheelwells	51.6
Load floor length	
— to front seat	98.6
— to center-row seat	61.7
— to rear-row seat	28.4
CARGO VOLUME (CU. FT.)	
Center-row and rear-row seats in place	41.3
Rear-row seat removed	104.4
Center-row and rear-row seats removed	170.4



PREFERRED EQUIPMENT GROUPS

These convenient option packages make it easy to tailor Astro to your exact specifications.

NOTE: All Astro Preferred Equipment Groups include the standard Astro body with rear panel doors. An upgrade to optional Dutch doors with lift-glass is available with any Preferred Equipment Group.

TRIM LEVEL	BASE	BASE	LS	LS	LT
PREFERRED EQUIPMENT GROUP	1SA	1SB	1SC	1SD	1SE
Base Trim	■	■			
Marketing Package 1TG: Includes Tilt-Wheel™ Adjustable Steering Column, Electronic Speed Control with Resume Speed, Cargo Convenience Net, Power Windows, Power Door Locks, Deep-Tinted Glass and Dual Reading Lights		■			
8-Passenger Seating Arrangement	■ ¹	■ ¹	■ ¹	■ ¹	■ ¹
Floor Mats, Front and Rear	■	■	■	■	■
Body-Side Moldings	■				
Styled-Steel Wheels, Argent-Painted		■ ²			
Seat Package: Includes Front-Seat Inboard/Outboard Armrests, Seatback Map Pockets and Manual Adjustable Lumbar Supports (requires Optional Custom Cloth Interior)	■	■	■	■	■
LS Trim			■	■	
Marketing Package 1TK: Includes Deep-Tinted Glass, Dual Electric Remote Exterior Mirrors, Storage Compartment under Front-Passenger Seat, Overhead Console, LH and RH Illuminated Visor Vanity Mirrors and Power Windows.			■ ³	■ ³	
Styled-Steel Wheels, Chrome-Cladded			■		
Brushed Aluminum Wheels				■ ⁴	■ ⁴
Luggage Carrier				■	■
Remote Keyless Entry				■	■
6-Way Power Driver Seat				■	■
LT Trim					■
Marketing Package 1TM: Includes 6-Way Power Driver Seat and Storage Compartment under Front-Passenger Seat					■ ³

■ Included in Preferred Equipment Group.

¹ May substitute Optional 7-Passenger Seating. ² Upgrade to Optional Chrome-Cladded Styled-Steel Wheels or Optional Brushed-Aluminum Wheels allowed. ³ Under-Seat Storage Compartment deleted when 6-Way Power Passenger Seat is specified. ⁴ May substitute Chrome-Cladded Styled-Steel Wheels.

NOTE: Some individually available options listed may be included in, or be ordered only with, specific Preferred Equipment Groups, Special Packages or Marketing Packages. Availability of some equipment may vary by model and series. Some additional ordering restrictions may apply. Please see your salesperson for details.

AN ADDITIONAL SAFETY NOTE: All standard and optional seating arrangements include Adjustable Front Outboard Lap/Shoulder Safety Belts, Rear Outboard Lap/Shoulder Safety Belts and Safety Belt Comfort Guides on the Rear Outboard Lap/Shoulder Safety Belts that can be adjusted to fit older children and small adults. See your owner's manual for more information.



STANDARDS AND OPTIONS

TRIM LEVEL	BASE	LS	LT
SEATING			
5-passenger seating arrangement includes: • Front high-back reclining adjustable bucket seats with head restraints • Center-row removable and adjustable 3-passenger bench seat with head restraints — Custom Vinyl trim — Custom Cloth trim	S ¹ O ^{1,2}	-- --	-- --
8-passenger seating arrangement includes: • Front high-back reclining adjustable bucket seats with head restraints (with Base Preferred Equipment Group 1SB and with LS trim, front seats also include adjustable lumbar supports, inboard/outboard armrests and seatback map pockets) • Center- and rear-row removable 3-passenger adjustable bench seats with head restraints — Custom Cloth trim	O ²	S	--
8-passenger seating arrangement includes: • Front special high-back reclining adjustable bucket seats with adjustable lumbar supports, inboard/outboard armrests, seatback map pockets and head restraints • Center and rear-row removable 3-passenger split-folding reclining bench seats with fold-down center armrest/console with convenience tray and beverage holders — with Special Cloth trim — with Special Leather seating surfaces	-- --	-- --	S O
7-passenger seating arrangement includes: • Front high-back reclining adjustable bucket seats with adjustable lumbar supports, inboard/outboard armrests, seatback map pockets and head restraints • Center-row high-back reclining bucket seats • Rear-row removable 3-passenger bench seat with head restraints — Custom Cloth trim	O	O	--
7-passenger seating arrangement includes: • Front high-back reclining bucket seats with adjustable lumbar supports, outboard armrests, seatback map pockets and head restraints • Center-row high-back reclining bucket seats with inboard/outboard armrests seatback map pockets and head restraints • Rear-row removable 3-passenger split-folding reclining bench seat with fold-down center armrest/console with convenience tray and beverage holders — Special Cloth trim — Special Leather seating surfaces — with center-row adjustable lumbar supports	-- -- --	-- -- --	O O O
Seat, power driver: 6-way	O ³	O	S
Seat, power passenger: 6-way	O ^{3,4}	O ⁴	O
Seats, dual integral child safety (requires 5- or 8-passenger seating)	O ³	O	--
INTERIOR FEATURES			
Air bags: Next Generation driver and front-passenger (Next Generation driver and front-passenger air bags will be available interim 1998 model year.)	S	S	S
Air conditioning, front (with CFC-free refrigerant)	S	S	S
Air conditioning, front and rear (with CFC-free refrigerant), includes 105 amp alternator	O	O	O
Armrests, LH and RH, molded into door panel	S	S	S
Coat hooks: three LH and two RH	S	S	S
Console, overhead includes: electronic compass, outside temperature readout, 4 map/reading lights, dome lamp, 2 stowage compartments and garage door opener stowage	O	S	S
Cargo convenience net: rear compartment	O	S	S

TRIM LEVEL	BASE	LS	LT
INTERIOR FEATURES (contd.)			
Defogger, rear-window, electric: requires optional Dutch doors	O	O	O
Door trim, driver and passenger doors: color-keyed expanded cloth with map pockets, carpet inserts and insulation			
— with reflectors	S	S	-
— with lighted reflectors	-	-	S
Floor carpeting, full: color-keyed, on wheel-housings and entire load floor	S	S	S
Floor mats: color-keyed, for all seating areas	O	S	S
Glass, swing-out window:			
— in sliding side door and left-front quarter-panel windows	S	S	S
— in rear load doors	-	S ³	S ³
Glass, Solar-Ray: light-tinted, all windows	S	-	-
Glass, Solar-Ray: deep-tinted side and rear windows	O	S	S
Headliner, full-length: 2-piece, color-keyed foam-backed cloth	S	S	S
Heater, rear	O	O	O
Jack: screw-operated scissor-type with ratchet handle, extension and two wheel blocks	S	S	S
Lighting: delayed illuminated entry	S	S	S
Lighting: stepwell lamps, storage compartment lamp, three dome lamps with front, rear and sliding side door-actuated switches, dome lamp defeat switch	S	S	S
Lights, reading: dual adjustable			
— mounted in front- and center-row dome light assemblies	O	S	S
— mounted in center-row dome light assembly (in addition to 4 map/reading lights in overhead console)	-	S	S
Locking:			
— single two-sided key operation of ignition, front doors and rear load doors	S	S	S
— power door locks	O	S	S
— Remote Keyless Entry	O ⁸	O	S
Power outlets: auxiliary electric, covered:			
— 2 in convenience console cover (in addition to cigarette lighter)	S	S	S
— 1 on rear body pillar near cargo-area floor	S	S	S
Power windows: with driver's Express-Down	O	S	S
Scotchgard™ Protector: on cloth seat trim and carpeted surfaces	S ¹	S	S ¹
Sunshades, LH and RH: color-keyed cloth, each with visor mirror, map band and extender	S	-	-
Sunshades, LH and RH: color-keyed cloth, each with adjustable lighted visor mirror (with dimmer), map band, auxiliary visor and extender	-	S	S
Storage provisions: • center-row left-hand seat area: includes ashtray, upper storage bin and beverage holder and full-length lower storage bin • rear-row left-hand seat area: includes upper storage bin, storage compartment, beverage holder and lower-corner storage compartment • rear-row right-hand seat area: includes upper storage bin, storage compartment and beverage holder	S	S	S

TRIM LEVEL	BASE	LS	LT
INTERIOR FEATURES (contd.)			
Transmitter: HomeLink 3-channel, programmable	-	O	O
INSTRUMENT PANEL/CONTROLS			
Convenience console, engine cover: with 2 beverage holders, cigarette lighter, 2 auxiliary covered electric power outlets, glove box with light and passenger-side map net	S	S	S
Convenience Group: Tilt-Wheel™ Adjustable Steering Column and electronic speed control with Resume Speed	O	S	S
Gauges: analog-type: includes speedometer, odometer, trip odometer, fuel level, voltmeter, coolant temperature and oil pressure	S	S	S
Heater: with windshield defroster and front side-window defoggers and rear-area heat ducts (located under front seats)	S	S	S
Passlock® vehicle theft-deterrent system	S	S	S
Steering wheel: black, 4-spoke with anti-theft locking feature	S	S	-
Steering wheel: black, leather-wrapped, 4-spoke, with anti-theft locking feature	-	O	S
Warning tone: headlamps-on	S	S	S
AUDIO SYSTEMS BY DELCO ELECTRONICS			
NOTE: All Astro Passenger Van stereo sound systems include a Delco Electronics ETR (Electronically Tuned Receiver) AM/FM stereo with seek-scan feature and digital clock.			
ETR AM/FM stereo	S	S	S
ETR AM/FM stereo with cassette player	O	O	O
ETR AM/FM stereo with cassette player: includes automatic tone control, speed-compensated volume and TheftLock (center-row seating radio control available as an additional option ⁹)	O	O	O
ETR AM/FM stereo with compact disc player: includes automatic tone control, speed-compensated volume and TheftLock	O	O	O
ETR AM/FM stereo with cassette player with Search and Repeat and compact disc player: includes automatic tone control, speed-compensated volume, CD-in play/radio switching and TheftLock (center-row seating audio control available as an additional option ⁹)	O	O	O
EXTERIOR FEATURES			
Body panels, two-side galvanized steel (except roof)	S	S	S
Bumpers, front and rear: color-keyed, with combination rear top-step surface	S	S	S
Cladding: lower body-side, color-keyed	-	S	S
Daytime Running Lamps (DRL)	S	S	S
Doors			
— sliding side door; passenger-side: includes child security rear-door lock feature	S	S	S
— dual rear load doors	S	S	S
— Dutch doors (rear): includes liftglass and rear-window wiper washer and delay feature	O ⁸	O	O
Grille, molded: painted Argent	S	-	-
Grille, molded: with chrome accents	O	S	S
Headlamps: halogen, sealed-beam	S	-	-
Headlamps: composite, halogen	O	S	S
Luggage carrier: black-painted	O	O	S

TRIM LEVEL	BASE	LS	LT
EXTERIOR FEATURES (contd.)			
Mirrors, below-eyeline: dual fold-away, black, adjustable	S	-	-
Mirrors, below-eyeline: dual fold-away, electric remote, black	O	S	S
Moldings, body-side	O	-	-
Paint: etch-resistant clearcoat	S	S	S
Wipers, windshield: with washer and intermittent feature	S	S	S
CHASSIS FEATURES			
Brakes:			
— front disc/rear drum: with power assist	S	S	S
— anti-lock brake system, 4-wheel (ABS)	S	S	S
Cold Climate Package: includes engine block heater and coolant protection	O	O	O
Differential, locking, rear	O	O	O
Engine and transmission oil coolers	S	S	S
Fuel tank: 25-gal. capacity	S	S	S
Steering, power: speed-sensitive EVO (Electronic Variable Orifice)	S	S	S
Suspension Package, Touring: includes gas-charged front and rear shock absorbers, rear stabilizer shaft and P235/65R-15 white outline-lettered Touring tires	O ⁷	O ⁷	O ⁷
Trailer special equipment, heavy-duty: includes weight-distributing hitch platform and 8-lead trailer wiring harness	O	O	O
Rear-wheel drive	S	S	S
All-Wheel-Drive: full-time (model option)	O	O	O
TIRES			
P215/75R-15 blackwall all-season steel-belted radials	S	S	S
P215/75R-15 white outline-lettered all-season steel-belted radials	O	O	O
P235/65R-15 white outline-lettered all-season steel-belted Touring radials	O ⁷	O ⁷	O ⁷
Tire, compact spare: on steel wheel (mounted underfloor at rear)	S	S	S
S — Standard with trim level. O — Optional.			

1 Not available with Ruby interior color. 2 A Front-Seat Package, including adjustable lumbar supports, inboard/outboard armrests and seatback map pockets, is available as an option with Base Preferred Equipment Group 1SA (requires Custom Cloth trim). 3 Requires optional Custom Cloth interior trim. 4 Requires 6-way power driver seat. 5 Deletes storage compartment under front-passenger seat. 6 Except with optional rear Dutch doors. 7 Requires optional power door locks. 8 Carpeted surfaces only with standard Custom Vinyl trim and optional LT leather seating surfaces. 9 Includes 2 headphones jacks and 2 pop-out rotary volume controls. 10 Available on Astro rear-wheel-drive models only; not available with All-Wheel-Drive model; requires brushed-aluminum wheels. 11 Included and available only with optional (RPO FE2) Touring Suspension Package.

NOTE: Tire chains should not be used on Astro models equipped with P235/65R-15 tires because they could cause damage to the vehicle.

NOTE: The Astro trim features indicated reflect only a portion of the total content of each trim level. See your Chevy Truck dealer for complete listings. For Astro Cargo Van information, see the 1998 Chevrolet Commercial Specialty Vehicles brochure or your Chevy Truck dealer.

ASTRO COLOR AND TRIM

With luxurious Special Leather,* Special Cloth, Custom Cloth or Custom Vinyl interior trims, and a wide selection of exterior colors available, you can equip Astro just the way you want it.

COLOR AVAILABILITY

EXTERIOR COLORS	INTERIOR COLOR			
	MEDIUM GRAY	NAVY	NEUTRAL	RUBY [†]
Light Autumnwood Metallic			■	
Medium Cadet Blue Metallic	■	■	■	
Teal Blue Metallic	■		■	
Cherry Ice Metallic	■		■	■
Dark Copper Metallic	■		■	
Dark Forest Green Metallic	■		■	
Dark Purple Metallic	■		■	
Light Carmine Red Metallic	■		■	
Silvermist Metallic	■	■		■
Ivory White	■	■	■	■

[†] Not available with Base trim with standard 5-passenger seating.

SPECIAL LEATHER TRIM*

Optional with LT trim.



Medium Gray

Special High-Back Reclining Bucket Seat
Shown in Neutral Special Leather

SPECIAL CLOTH TRIM

Included with LT trim.



Neutral

Special High-Back Reclining Bucket Seat
Shown in Medium Gray Special Cloth

CUSTOM CLOTH TRIM

Included with LS trim, optional with Base trim.



Medium Gray

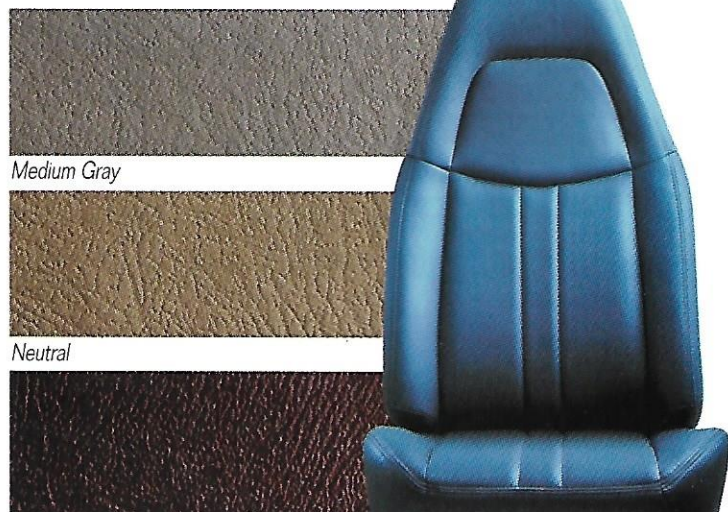
Navy

Neutral

High-Back Reclining Bucket Seat
Shown in Ruby Custom Cloth[†]

CUSTOM VINYL TRIM

Included with Base trim.



Medium Gray

Neutral

Ruby[†]

High-Back Reclining Bucket Seat
Shown in Navy Vinyl

*Leather on seating surfaces only. [†]Ruby trim not available with 5-passenger seating.



Light Autumnwood Metallic



Dark Forest Green Metallic



Medium Cadet Blue Metallic*



Dark Purple Metallic*



Teal Blue Metallic*



Light Carmine Red Metallic



Cherry Ice Metallic*



Silvermist Metallic



Dark Copper Metallic



Ivory White

*With LS or LT trim, this body color requires an optional RPO ZY2 Two-Tone Appearance, which includes lower body cladding in either Light Autumnwood Metallic or Silvermist Metallic (cladding color availability depends on body color selected). Astro models with Base trim are not available with Two-Tone Appearance. See your Chevy dealer for availability of Two-Tone Appearance combinations with the body color and trim level of your choice.



CHEVY TRUCKS