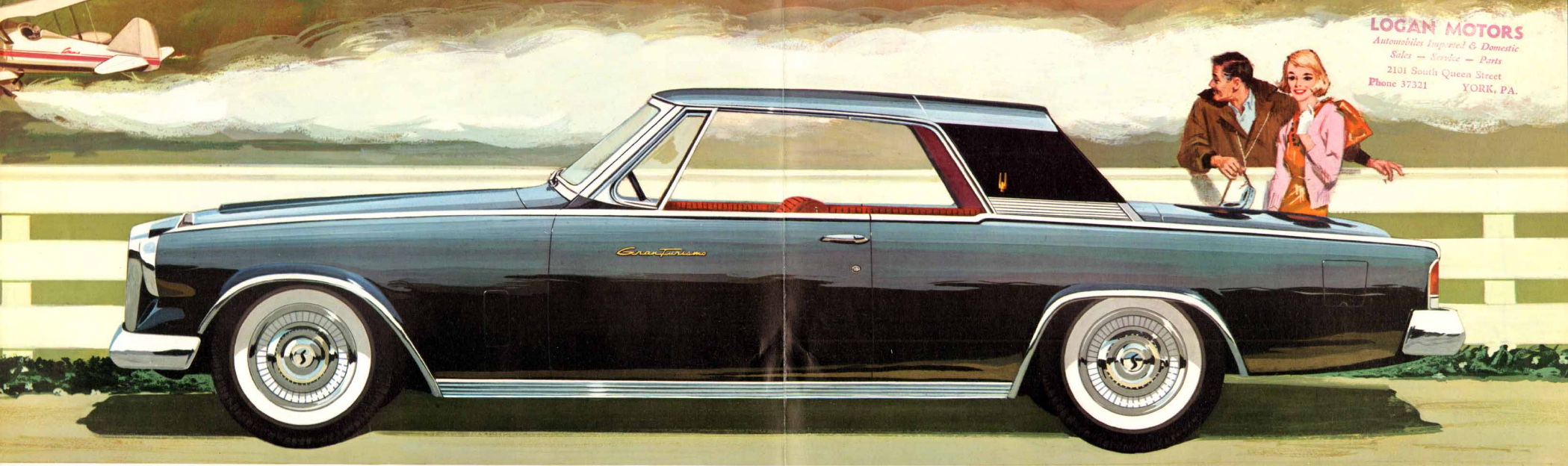




STUDEBAKER PRESENTS

The Gran Turismo HAWK



LOGAN MOTORS
Automobiles Imported & Domestic
Sales — Service — Parts
2101 South Queen Street
Phone 37321 YORK, PA.

A distinctive new sports classic, The Gran Turismo Hawk by Studebaker is a rarity among the most distinguished automobiles of the world. From the gleaming expanse of hood through the smallest handcrafted detail, The Gran Turismo Hawk is the luxurious embodiment of roadability and driving ease...a boldly dramatic automobile

designed in the meticulous tradition of the great European road cars. Yet, it is a unique and important characteristic of The Gran Turismo Hawk that it also offers the generous roominess, special comforts and mechanical conveniences which experience has demonstrated are desirable to the discerning American motorist.

Full 120" wheelbase, Thunderbolt V-8 OHV engine for sports car response. Standard 3-speed transmission—optional overdrive, floor-mounted 4-speed gearbox or automatic transmission.

Exclusive variable-rate front coil springs and anti-sway bar; precision steering; asymmetrically mounted rear springs and high capacity, direct action telescopic shock absorbers; finned-drum brakes.

Exceptionally luxurious, true Gran Turismo interiors with full five-passenger capacity; sports car type bucket seats forward or optional front reclining seats; fold-away arm rest for rear passengers.

Exquisite detail in all appointments. Deep carpeting; luxury-padded safety dash; recessed instrumentation; optional padded sun visors, and optional Rich vinyl upholstery, deeply foam padded.

Among the long list of The Gran Turismo Hawk options available for your additional driving pleasure are the Hill Holder, Twin Traction differential, power brakes, power steering and air conditioning.

YOUR STUDEBAKER DEALER INVITES YOUR INSPECTION. IT WILL REVEAL THE GRAN TURISMO HAWK AS AN EXCITING AND SATISFYING AUTOMOBILE.



The luxurious true Gran Turismo interior is designed to provide maximum passenger comfort even through protracted periods of high speed touring. The full 120 inch wheelbase makes possible exceedingly generous seating room for all passengers, while the bucket seats and console forward, and the let-down arm rest in the rear, provide additional body support to make travel a completely relaxing experience. Naturally, in so fine a car, upholstery trim and carpeting are all of the finest quality, meticulously hand-fitted and finished by master craftsmen.



Rich walnut-grained control panel combines unique concave shape and direct reading sports type instrumentation to provide driver with full, instant information. Tachometer and electronically calibrated clock are optional equipment.



Foam-padded between-seat front console with ash tray houses handy receptacle for road maps, cigarettes, sunglasses and other personal effects. The short, straight control stick for the optional 4-speed gearbox is designed and positioned for easiest, smoothest shifting. Reminder gear progression diagram on knob.

The Gran Turismo HAWK by STUDEBAKER



DIMENSIONS AND WEIGHTS

Overall length	204"
Overall width	71.3"
Overall height, loaded	55.5"
Wheelbase	120.5"
Shipping weight, lbs.	3280
Turning diameter: Curb to Curb	41.0'
Headroom: front-rear	34.5"—33.75"
Legroom: front-rear	45.93"—36.68"
Hiproom: front-rear	21.87"—58.00"
Shoulder Room: front-rear	55.00"—52.37"

*Each Bucket Seat

ENGINE

Bore & Stroke	3.56" x 3.63"	V-8
Piston Displacement (cu. in.)	289	
*Horsepower, Maximum	210 @ 4500 rpm	
Torque, Max. lb.-ft.	300 @ 2800 rpm	
Compression Ratio	8.5 to 1	
Carburetor	Downdraft	2 barrels
Crankcase capacity (add 1 qt. for filter)	5 qts.	
Cooling system capacity (add 1 qt. for heater)	17 qts.	
Fuel Capacity	18 gals.	
Fuel Recommended	Regular	
Battery	12 Volts	
Dual Exhaust	Standard	
Oil Filter	Standard	

*With optional 4 bbl. carburetor... 225 hp. @ 4500 rpm

OPTIONAL EQUIPMENT AND ACCESSORIES

Air Conditioning	Safety Padded Sun Visor
Air Cleaner, Wet Type	Seats, Reclining: Individually Adjustable
Climatizer	Adjustable
Electric Clock	Tires, White Sidewalls
Engine Tachometer	Transmissions:
Hill Holder—(Standard, Overdrive, and 4-Speed Transmissions only)	• 3-Speed Synchronesh Standard Equipment
Power Brakes	• Overdrive with 3-Speed Synchronesh
Power Steering	• Automatic
Radio: Manual or Push Buttons with Deck Lid	• 4-Speed Floor Mounted Gearbox
Antenna	Twin-Traction Differential
Rear Compartment Speaker	Electric Windshield Washer

To continue its program of quality and design improvement, the manufacturer reserves the right to change specifications, designs or prices without notice and without incurring obligation.

STUDEBAKER-PACKARD CORPORATION
South Bend, Indiana