

Avanti II

AVANTI MOTOR CORPORATION

Avanti II

AN AMERICAN-MADE CAR, UNIQUE IN THE WORLD

BELOW: Optional Magnum 500 wheels.



Avanti Motor Corporation has been building the Avanti II since 1965. Produced at a rate of about 200 annually, the Avanti II ranks as one of the world's most exclusive production automobiles.

The limited production rate of the Avanti II not only assures its uniqueness, but also permits a degree of hand workmanship and quality that is simply not attainable with mass production methods.

The small number produced also enables the purchaser of each Avanti II an almost unlimited choice of exterior color and interior trim.

Aside from its quality and limited numbers, the

Avanti II is one of the most visually distinctive automobiles built. Its styling remains as exciting today as when it was first introduced.

The striking appearance of the Avanti II is the creation of Raymond Loewy, perhaps the world's premier industrial designer. Visually, Loewy's design has remained virtually unchanged since he originally created it. The value of the Avanti II does not diminish over time due to styling changes.

The Avanti II combines the distinctiveness of its styling with the practicality of its mechanical components. The General Motors engine and Turbo

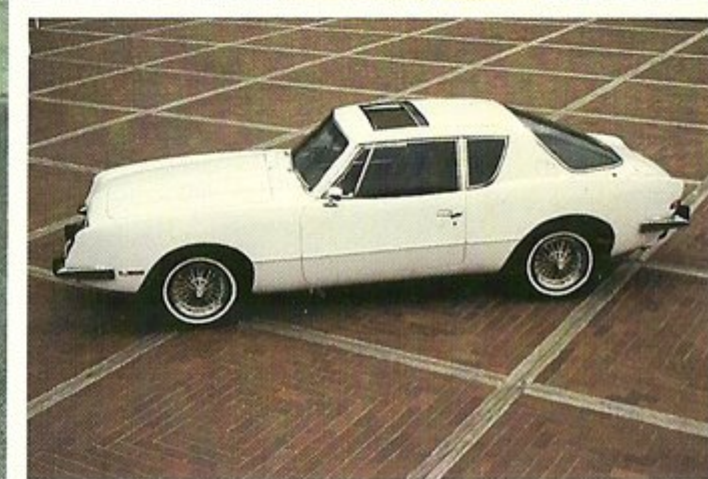
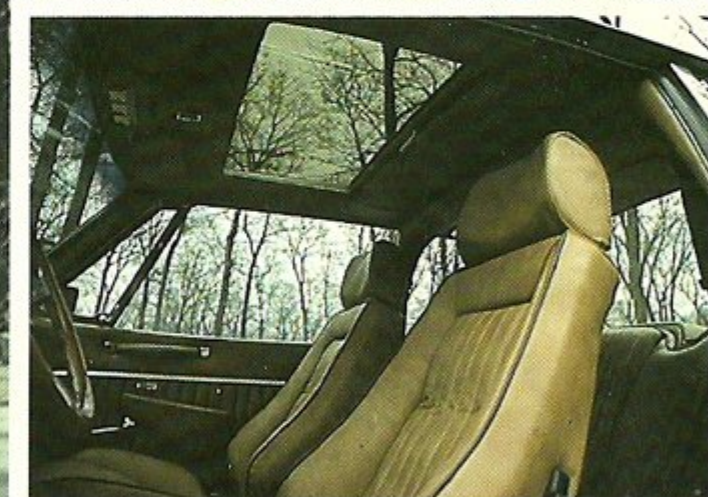
HydraMatic transmission that power the Avanti II are among the most reliable in the world.

The Avanti II chassis is a time-proven design that can be worked on by the garage or mechanic of the customer's choice, by a GM dealer, or by any one of several garages around the country that are already familiar with the Avanti.

Technical information and special parts are available directly from Avanti Motor Corporation. Warranty service is handled either through the selling dealer or by the customer's chosen repair facility.

TOP: Optional trunk-mounted luggage rack.
CENTER: Optional electric moonroof, Recaro front seats and leather interior.
BOTTOM: Optional electric moonroof and wire wheels.

BELOW: Auxiliary driving lights.



Selection of interior trim is an area in which the Avanti II differs from most ordinary automobiles. Rather than limit the purchaser to ten or fifteen standard interiors, the Avanti II offers almost the same choice of fabrics, vinyls and leathers available when selecting furniture upholstery for the home.

The standard front bucket seats or optional orthopedically engineered Recaro front buckets, as well as the rest of the interior, are covered with the purchaser's choice of vinyl, fabric and vinyl, or optional leather.

Unlike most cars that offer a leather interior option, the Avanti II does not limit leather to seating surfaces

only. About 300 square feet of leather covers the front and rear seats, door panels, rear side trim, the rear package shelf and the headliner. Contrasting welting around the seats or combinations of two colors of leather are available at no extra charge.

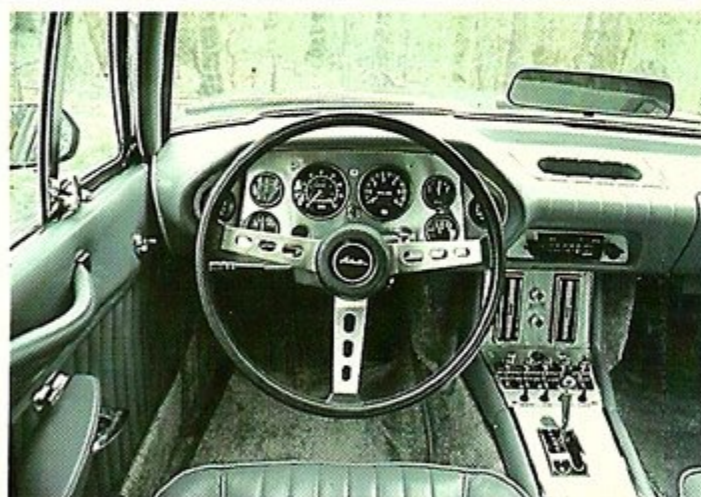
To further personalize the interior of an Avanti II, home-quality carpeting may be chosen to match or contrast with the interior materials selected.

Full instrumentation, including a speedometer and tachometer, ammeter, oil pressure, temperature, fuel, manifold vacuum gauges and clock are standard equipment. The dashboard and console may be finished in

silver brushed aluminum, simulated walnut grain or one of three optional genuine wood veneers.

TOP: Optional Recaro front bucket seats and leather interior with available contrasting welting around seats. CENTER: Standard brushed aluminum on dash and console, standard steering wheel. BOTTOM: Standard vinyl trim with fabric inserts.

BELOW: Optional leather interior, wood steering wheel and wood veneer on dashboard and console.



Aside from its distinctive design, the factor that most sets the Avanti apart is the fourteen weeks of hand workmanship that goes into each automobile.

The fiberglass body and reinforced steel perimeter frame are individually hand assembled.

Each body is finished with about sixteen coats of hand sanded primer and acrylic lacquer paint.

The interior trim is cut and sewn to order. Doors and windows are hand fitted, and the car is tested to be sure it is water tight before installing the carpet and seats.

After assembly, about four weeks is devoted to the

final preparation and testing of each Avanti II.

Every car undergoes at least 150 miles of road testing to be sure each component works as it should. Any defects are noted, corrected and the car is tested again.

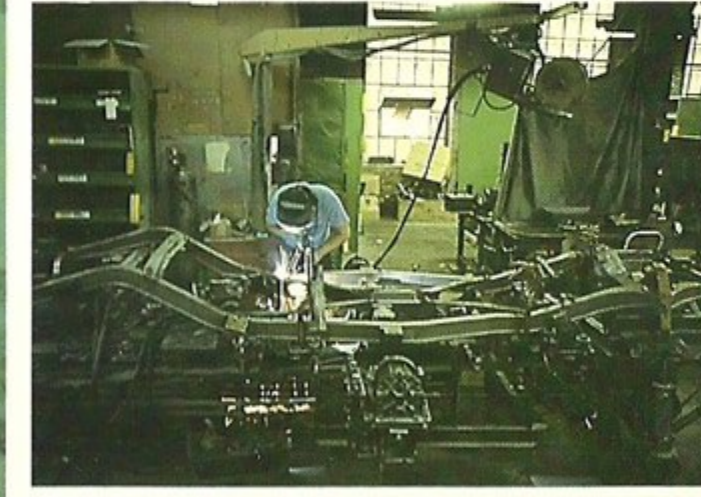
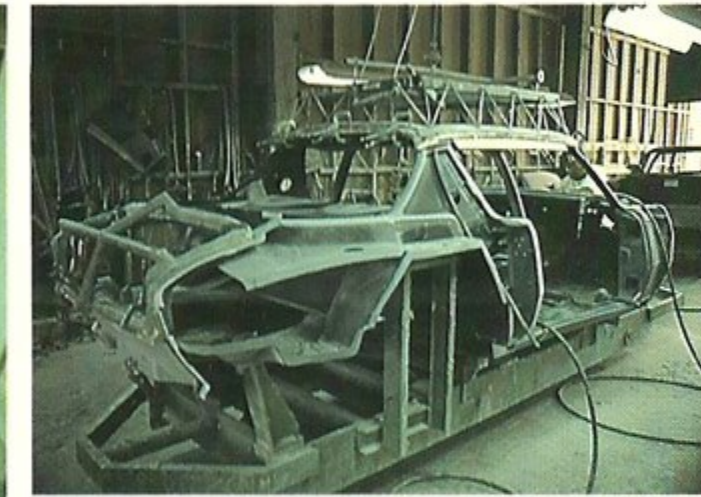
Only after successfully completing the testing process is an Avanti II pronounced ready for final polishing and delivery.

The skilled group of men and women who build the Avanti II take justifiable pride in the work they do. That pride is evident in the overall quality of every Avanti II.

BELOW: Hand sanding of first coats of primer.



TOP: Understructure of fiberglass body prior to installation of outer body panels. CENTER: Welding of x-member reinforcement into perimeter frame. BOTTOM: Drying of first coats of color on body.



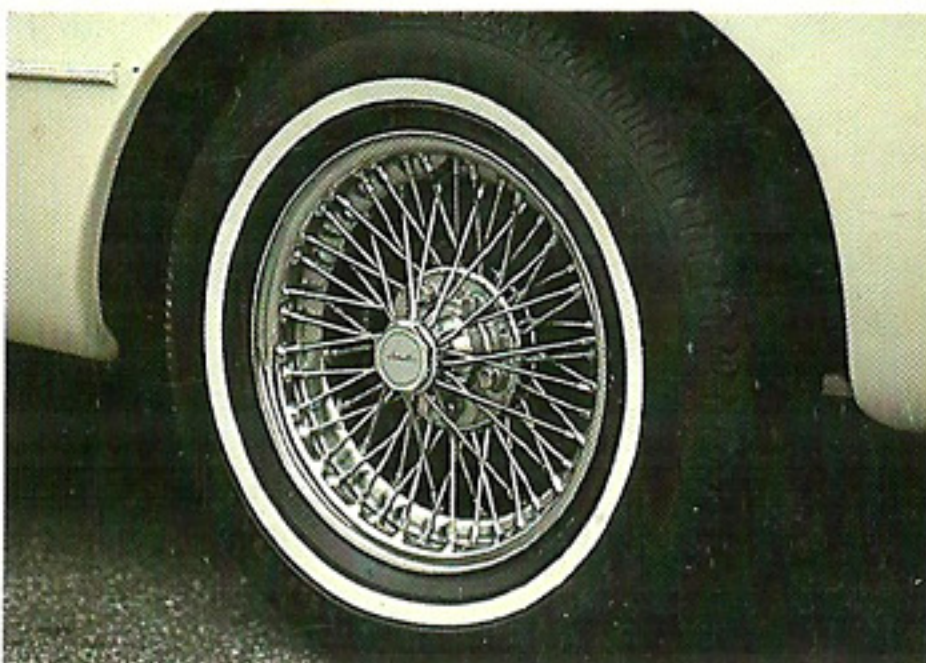
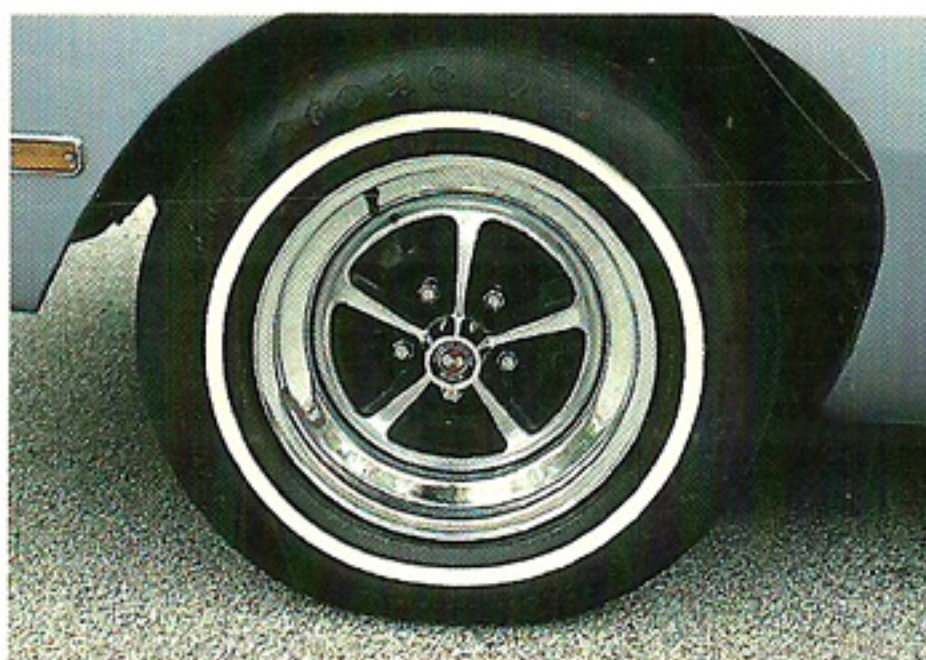
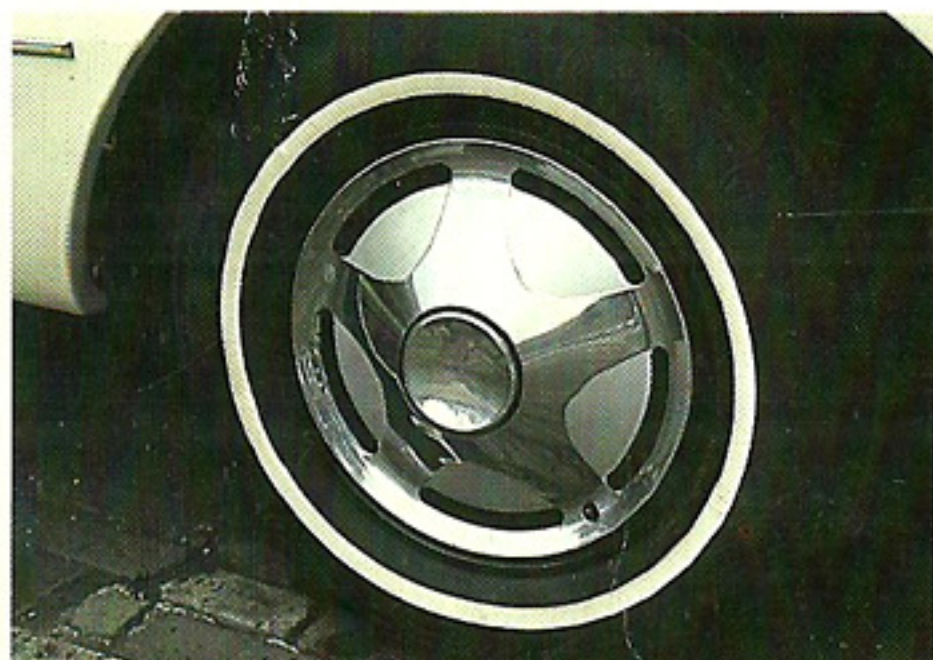
Avanti II



TRANSCO, INC.

1800 North Main Street
High Point, North Carolina 27262
Telephone (919) 882-9647

TOP LEFT: Standard stainless steel wheel cover
TOP RIGHT: Optional Magnum 500 styled steel wheel
BOTTOM LEFT: Optional wire wheel cover
BOTTOM RIGHT: Optional bolt-on wire wheel



Distinctive styling, limited numbers and hand craftsmanship are combined in the Avanti II with the practicality of proven mechanical components.

Each Avanti II is the result of about 1,000 hours of construction and testing backed by the experience gained through years of production.

For more information, contact Avanti Motor Corporation or your local Avanti II representative.

The information contained in this brochure was current at time of publication. Avanti Motor Corporation reserves the right to make changes in standard and/or optional equipment without notice.