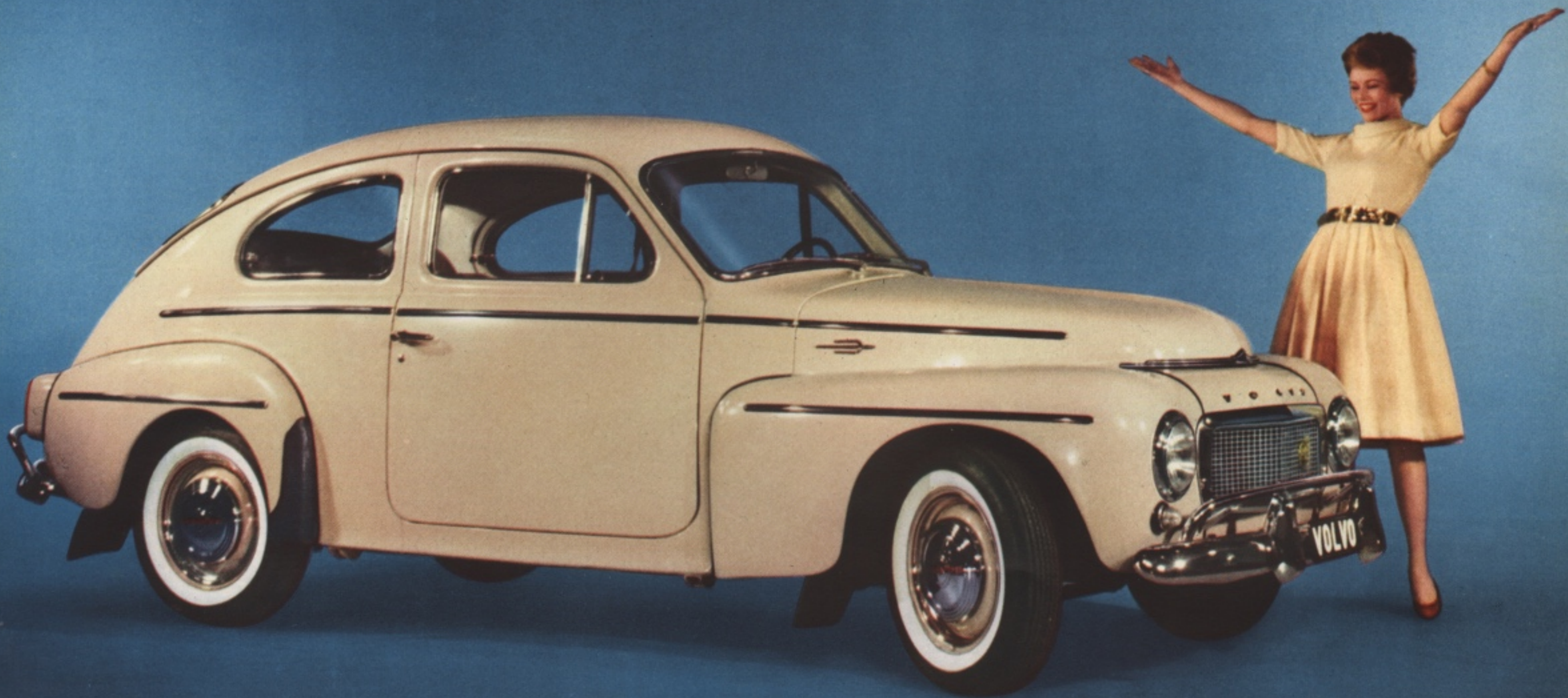


# VOLVO PV 544



# VOLVO PV 544

— the family sports car

## SPECIFICATIONS: VOLVO PV 544

### Type designations:

P 54408 = model with four-speed transmission.

P 54409 = model with three-speed transmission.

**Engine:** Four-cylinder, overhead valve, type B16B.

**Bore:** 3.125".

**Stroke:** 3.15".

**Displacement:** 97 cu. in. (1.58 liters).

**Compression ratio:** 8.2:1.

**Output:** 85 b.h.p. at 5,500 r.p.m.

**Torque:** 87 lb.ft. at 3,500 r.p.m.

**Oil filter:** Fullflow.

**Carburetors:** Twin SU horizontal.

**Clutch:** Single dry disk.

**Transmission:** Type M4, fully synchronized.

Number of gears: Four forward, one reverse.

**Optional transmission:** Type H6, 2nd and 3rd speed synchronized.

Number of gears: Three forward, one reverse.

**Propeller shaft:** Divided.

**Center bearing:** Located in sound- and vibration-insulating rubber blocks. Bearing requires no servicing.

**Rear axle:** Hypoid type. Axle shafts carried in taper roller bearings.

**Steering gear:** Cam and roller.

This sensational Swedish-built 5-passenger sedan combines the high speed performance of a sports car with the safety, roominess and comfort of the ideal family car. It gives amazing economy — up to 35 miles per gallon — yet boasts a dynamic 85 HP twin-carburetor sports engine that's brilliantly alive and exceptionally responsive. Balanced body weight and smooth suspension plus arm-chair comfort insure relaxed, carefree motoring. The Volvo PV 544 is a product of superb Swedish engineering.

**Front suspension:** Individual suspension with coil springs and control arms. Double-acting hydraulic, telescopic shock absorbers. Stabilizer.

**Rear suspension:** Coil springs. Rear axle carried on two rubber-mounted support arms, two torque arms and a track bar. Double-acting hydraulic, telescopic shock absorbers.

**Foot brakes:** Self-centering hydraulic Duo-Servo brakes.

Total brake lining area: 157 sq. in.

**Hand brake:** Mechanical operation on rear wheels only. Lever between front seats.

**Wheels:** Pressed steel disk type. All wheels balanced.

**Tires:** Tubeless, low pressure 5.90—15". White sidewalls.

**Body:** All-welded, integral construction steel body. Thoroughly rust-proofed.

**Fenders:** Undersealed.

**Fuel tank:** Located at rear. Capacity 9½ US gallons.

**Battery:** 6-volt, 85 amp.hour.

**Generator:** 50-amp., fan-cooled, automatic voltage control.

**Starter motor:** 0.75 h.p.

**Starter switch:** Built into ignition switch which has extra "radio" position for use of accessories when engine is not running.

**Ignition coil:** Connected to ignition switch by tamperproof armored cable.

**Headlamp dimmer:** Foot-operated switch. Headlamp beam warning light in instrument panel.

**Directional signals:** Flasher type front and rear, visible and audible warning signals in instrument panel. Self-cancelling control under steering wheel.

**Instrumentation:** Padded instrument panel containing combined instrument with fuel gauge, temperature gauge, speedometer, mileometer. Panel also contains warning lamps for battery charging, oil pressure, directional signals, headlamp beams. Rheostat-controlled instrument lighting.

**Heater, defroster and fresh air system:** Controls grouped to the left of instrument panel.

**Windshield wipers:** Double, two-speed electric wipers with automatic parking.

**Sun visors:** Double padded sun visors.

**Ashtrays:** One in instrument panel, one in front of each rear arm rest.

**Safety belt fittings:** Fittings for VOLVO safety belts.

**Tools:** Complete tool set and jack.

**Spare wheel:** Stowed vertically in side of luggage compartment.

**Wheelbase:** 102½".

**Overall length:** 177".

**Overall width:** 62½".

**Height:** 60¼".

**Tread, front:** 51".

**Tread, rear:** 51¾".

**Weight, incl. fuel, oil and water:** 2,140 lb.

*The factory reserves the right to modify prices, designs and equipment.*



**AB VOLVO**  
**Export Department**  
**GÖTEBORG**  
**SWEDEN**

**Importers:** VOLVO IMPORT, INC. 452 Hudson Terrace, Englewood Cliffs, N. J.

**Distributors:** VOLVO DISTRIBUTING, INC. 452 Hudson Terrace, Englewood Cliffs, N. J.  
SWEDISH MOTOR IMPORT, INC. 3301 West 12th St., Houston 24, Texas  
AUTO IMPORTS, INC. 13517 Ventura Blvd., Sherman Oaks, Calif.

**In Canada:** AUTO IMPORTS (SWEDISH) LTD.

Head Office: 1350 East Georgia St., Vancouver 6, B. C.

Branch Office: 48 Crockford Blvd. Scarborough (Toronto), Ont.