

# 1993 Eagle Talon

PATTERSON - CHRYSLER - PLYMOUTH  
JEEP - EAGLE  
1965 N. Ellsworth Ave.  
Salem, Ohio 44460  
216-337-3475



## A Teardrop That Can Make A Grown Man Cry.

It knifes through the air with breathtaking aerodynamics created by aggressive air dams, wind-channeling side skirts, and rear spoiler. Its beautiful teardrop shape results in an impressive low drag coefficient of 0.33.

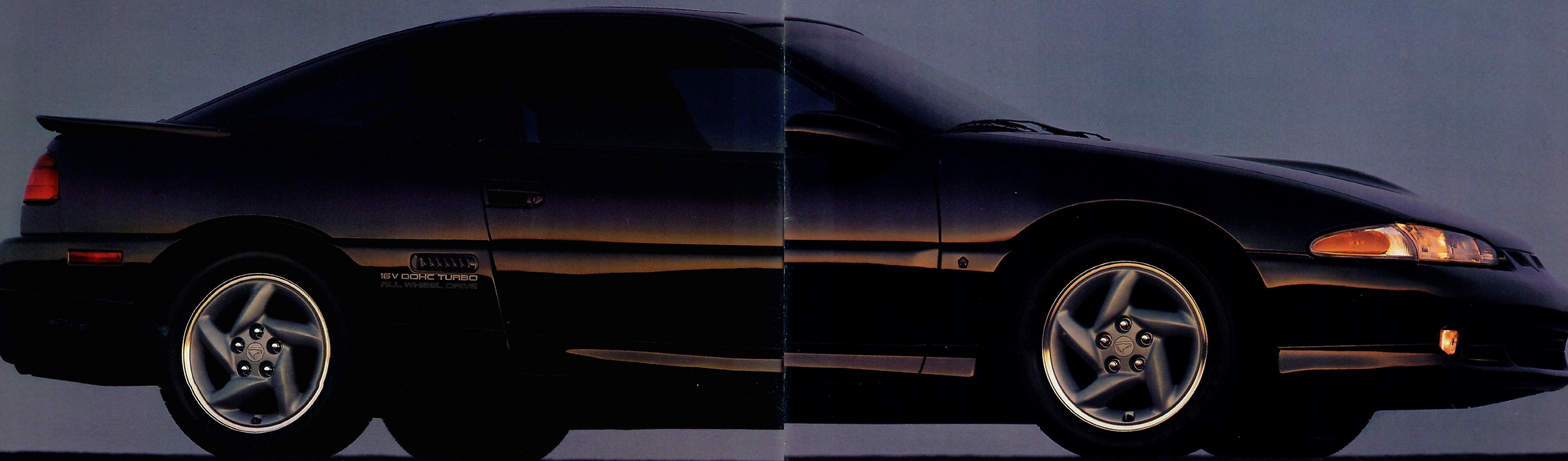
It's not surprising, then, that *Car and Driver* magazine named Eagle Talon TSi AWD to its prestigious "Ten Best" list for the third year in a row.

Eagle Talon. Not Intended For the General Public.



C	O	N	T	E	N	T	S
Active Safety							4
Ride and Handling							8
Powerplants							12
Ergonomics							16
Standard Features and Options							18
Commitment							20







## Due To Technical Circumstances, Nothing Is Beyond Your Control.

The key word here is control. Talon technology enables you to do more than cope with the road; it enables you to master it.

Talon TSi AWD's full-time all-wheel drive system measurably improves straight line performance. But the best way to grade Talon's performance is on a curve—wet or dry. Power is distributed to all four wheels. So on a curve, if the inside wheels begin to lose traction, power to those wheels is instantly reduced and

sent to the wheels with the most traction. Cornering is improved under all conditions.

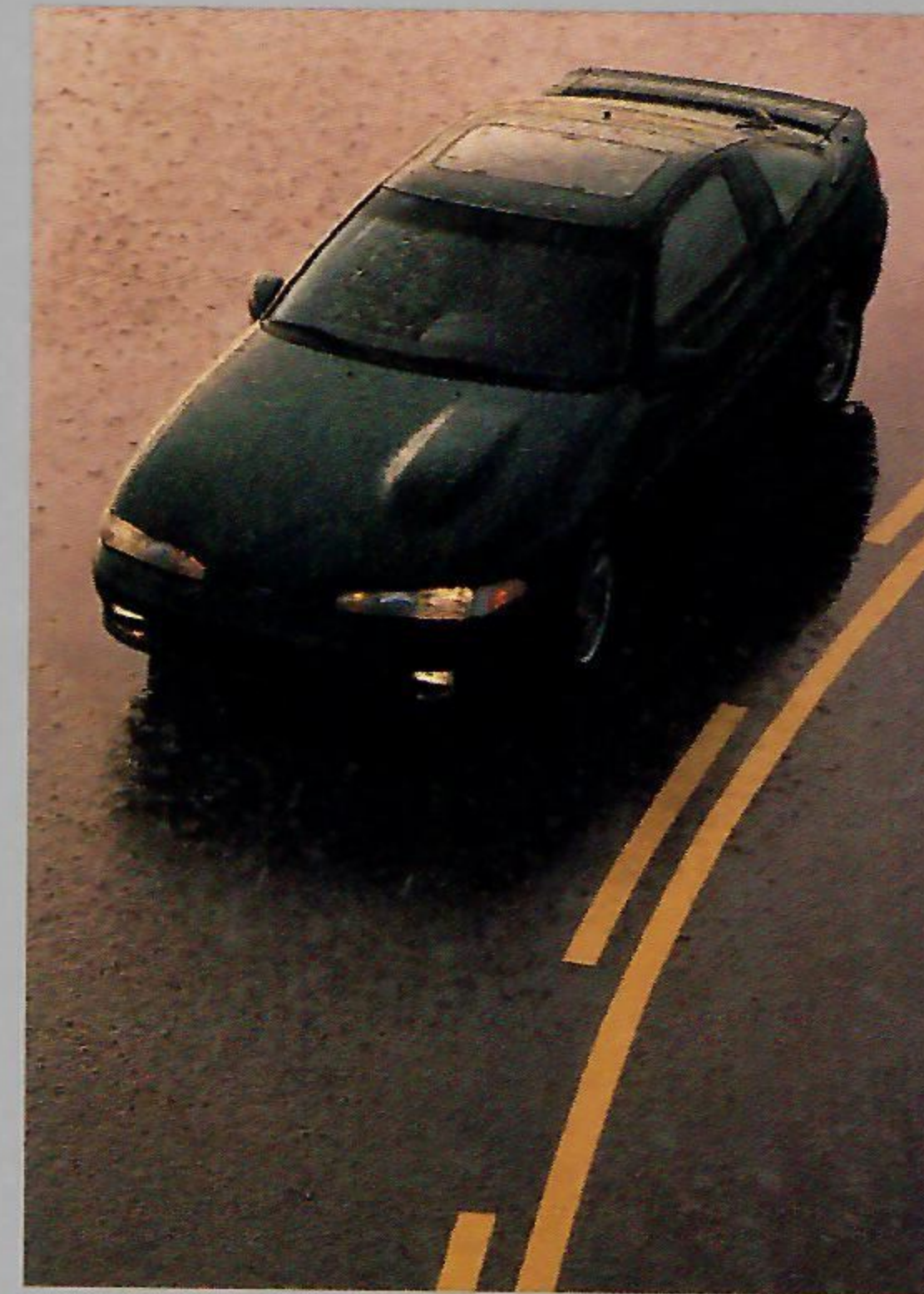
As the surface of the road changes, straight or curved, dry or wet, Talon's all-wheel drive system automatically adjusts to maximize traction at all four corners of the car.

For greater control in critical situations, you can choose Eagle Talon's optional anti-lock brake system (available on all Talon models except DL). Brake hard on wet or slippery surfaces, and Talon's ABS helps prevent the

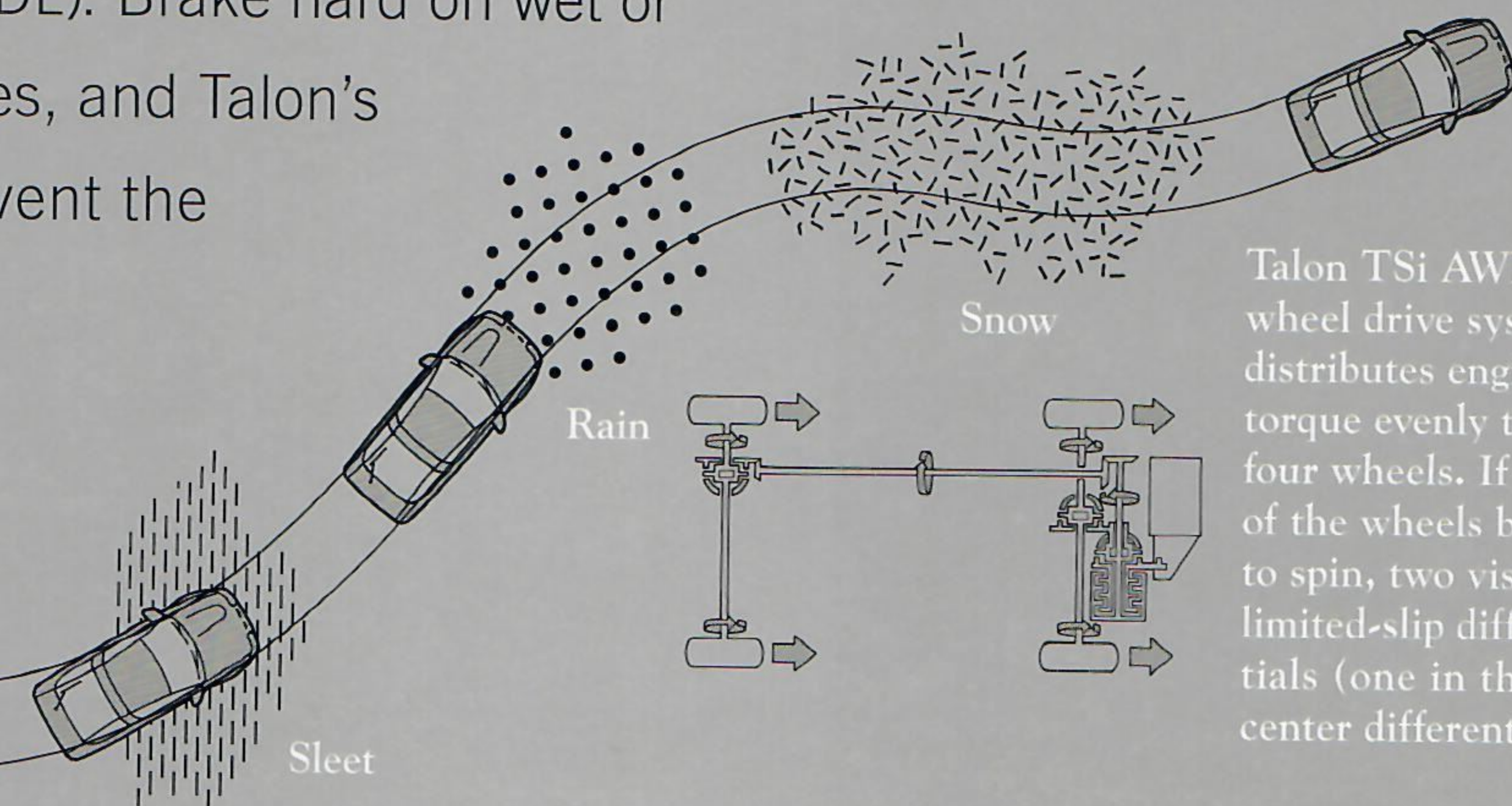


Eagle Talon TSi AWD

Optional ABS (not available on DL) features a sensor at each wheel that can detect impending brake lockup and loss of traction. An on-board micro-processor receives this information and automatically begins rapid modulation of hydraulic pressure (many times faster than a driver can physically "pump" the brake pedal), allowing the tires to maintain traction and the driver, steering control.



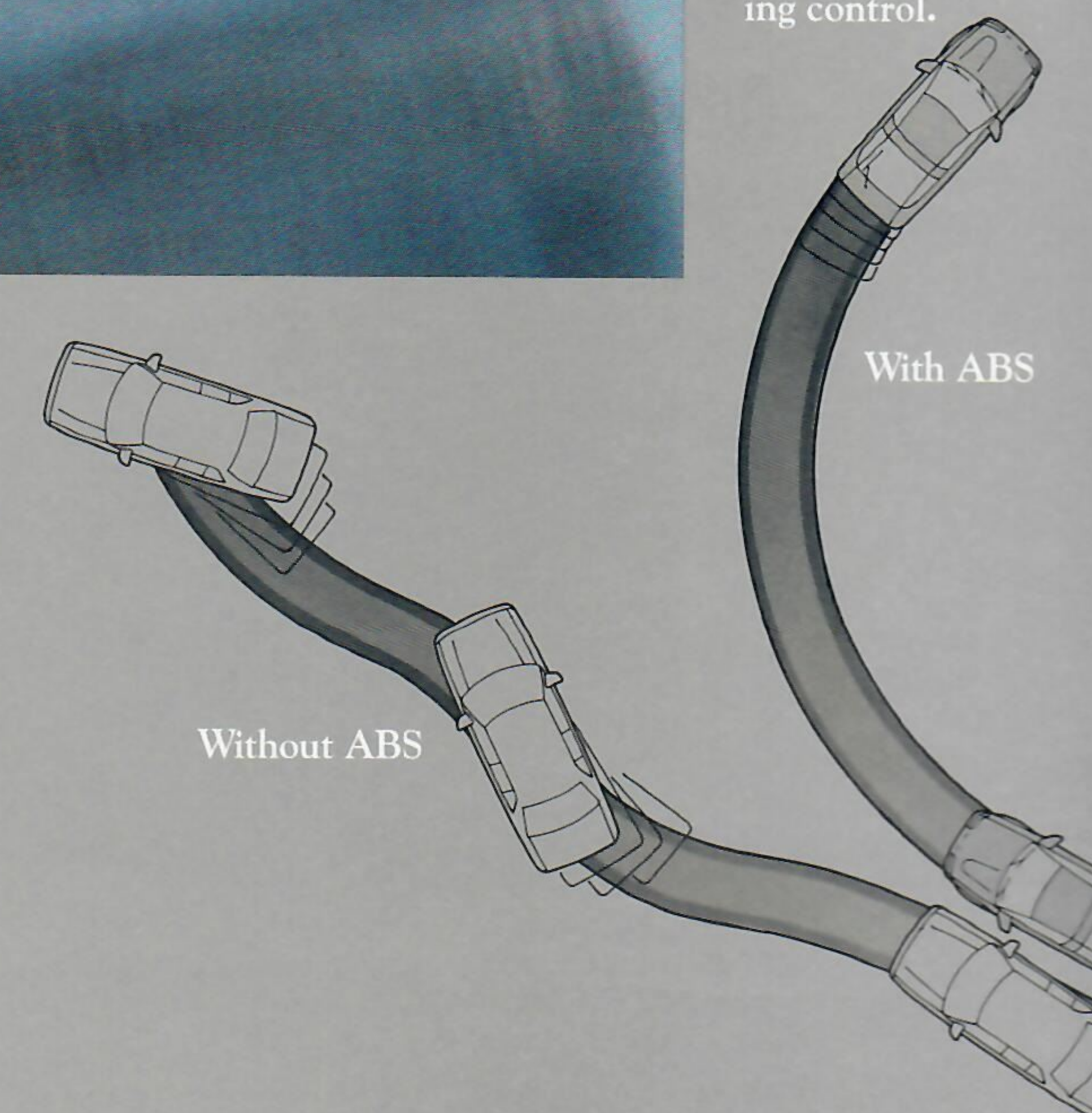
The Talon TSi AWD's full-time all-wheel drive system works continuously and will adjust torque distribution for maximum road-gripping performance over changing driving surfaces.



Talon TSi AWD all-wheel drive system distributes engine torque evenly to all four wheels. If one of the wheels begins to spin, two viscous limited-slip differentials (one in the center differential,

the other at the rear axle) allow the system to redirect torque to the wheels with the most traction. This allows the spinning wheels to regain adhesion much sooner.

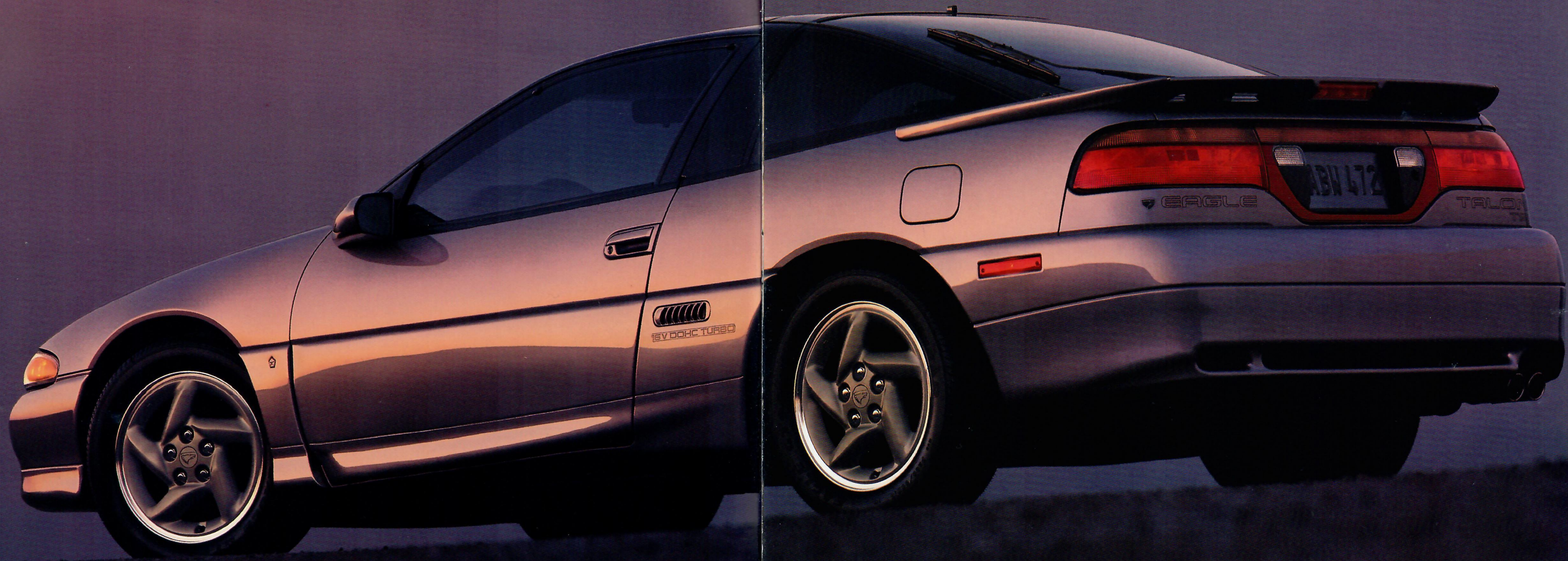
brakes from locking up. This ABS system improves vehicle stability and enables you to maintain steering control for better maneuverability when lockup would otherwise reduce this capability.



Without ABS

With ABS







## We Can Give You The Specs, But Trust The Seat Of Your Pants.

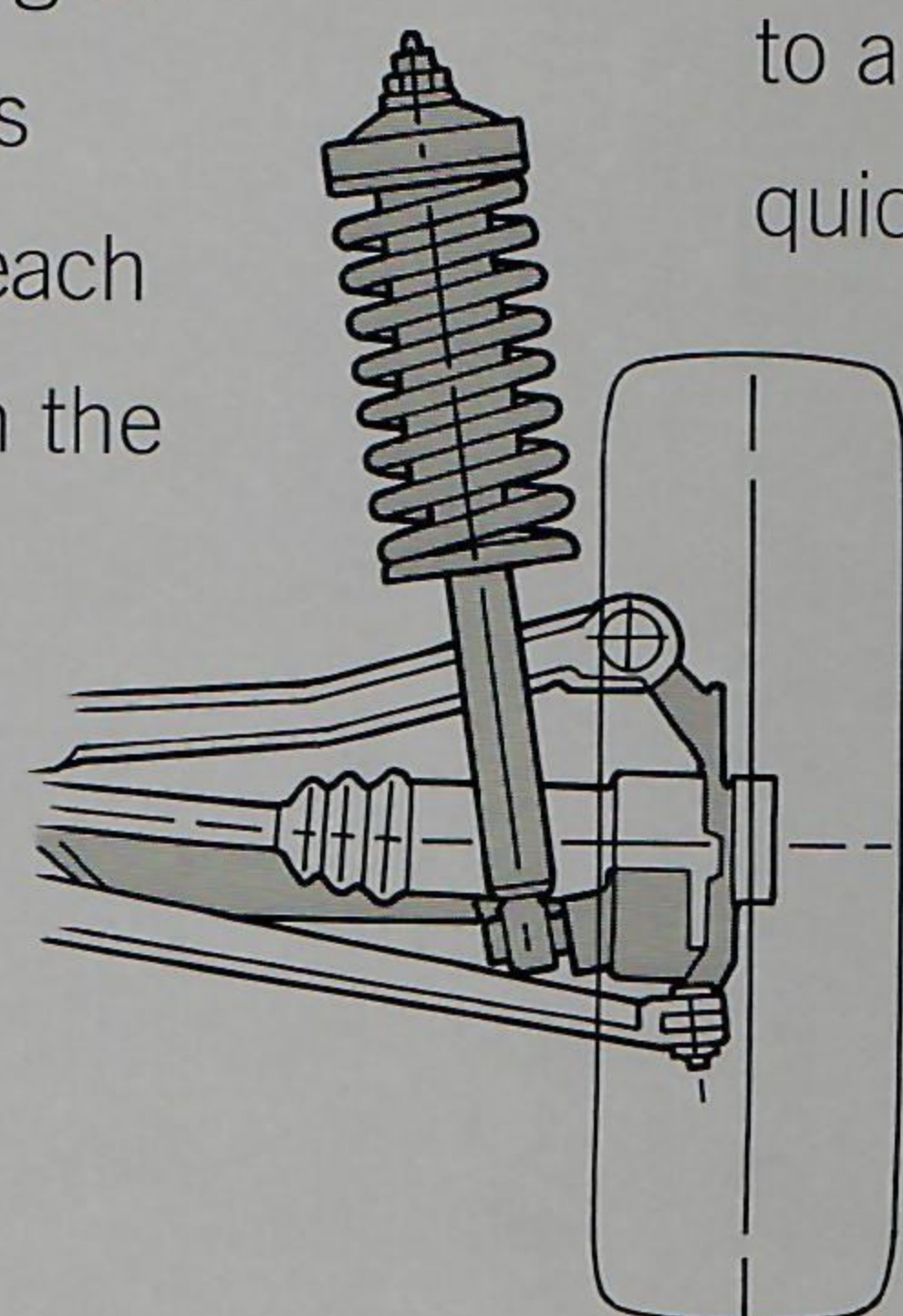
Experience the ride, the feel of Eagle Talon. It will tell you more than all the facts and figures we can throw at you. Instinctively,

you'll know you are at the wheel of a very special automobile. Its incredible ride and handling are the direct result of advanced high-performance technology.

A fully independent suspension system features front-end MacPherson struts, extra-firm

coil springs and stabilizer bar, as well as lower control arms. These control arms have a unique "anti-dive" design. They help maintain Talon's attitude during hard braking. Talon has another feature that is especially valuable when you encounter difficult road conditions. A negative offset steering geometry helps maintain steering stability on rough, uneven road surfaces.

Talon TSi AWD's rear double wishbone suspension has a rear trailing-arm design with toe control. This advanced design helps keep each wheel precisely positioned in the



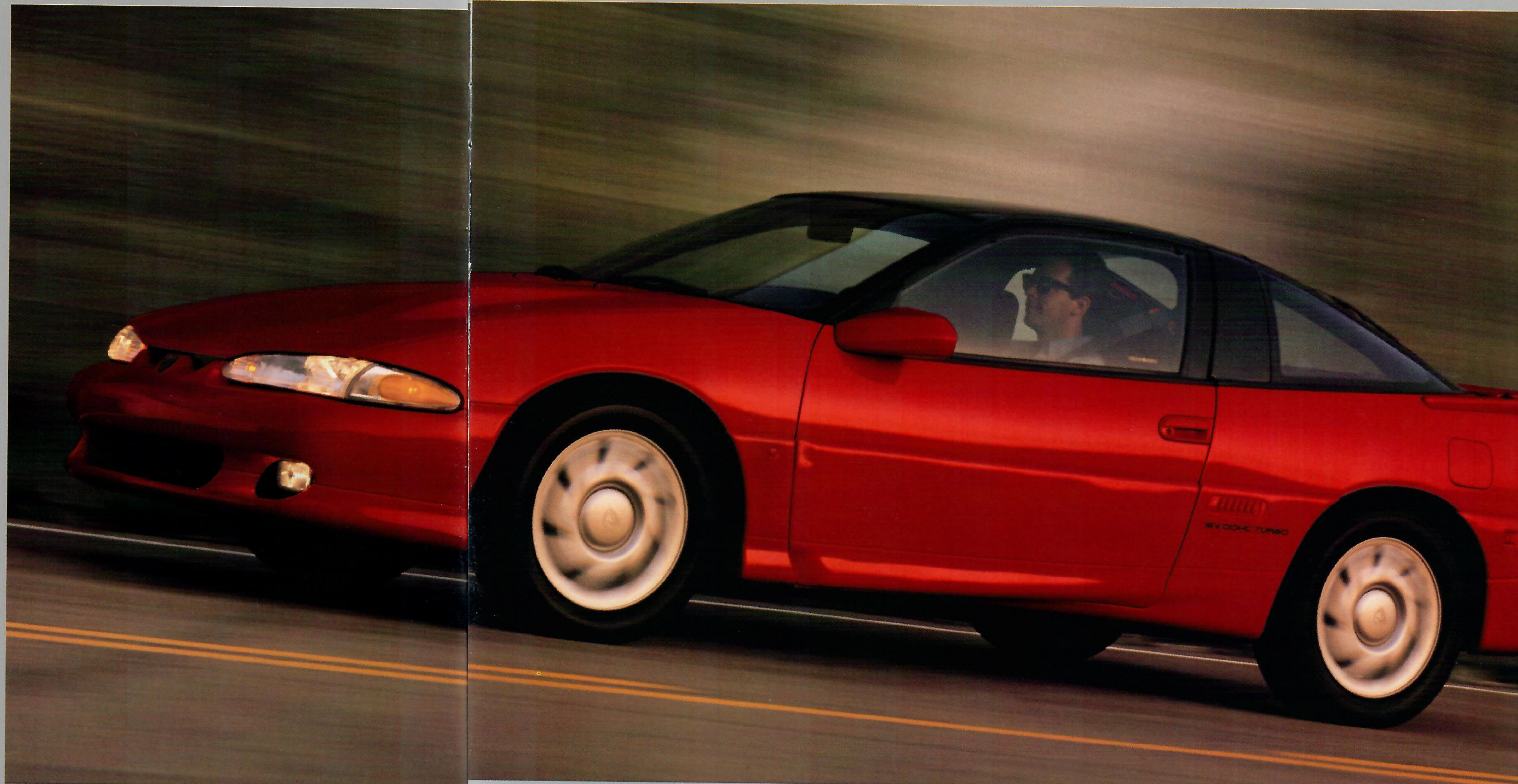
Talon TSi AWD's fully independent suspension features front anti-dive geometry, rear double wishbone design with trailing arms and toe control, and front/rear coil springs and stabilizer bars.

direction of travel. It also contributes greatly to a firm, more comfortable ride. Talon's quick-ratio (15.8:1) power steering provides

positive road feel as well as highly responsive handling. Talon's four-wheel disc brakes have ventilated front rotors to resist fade due to

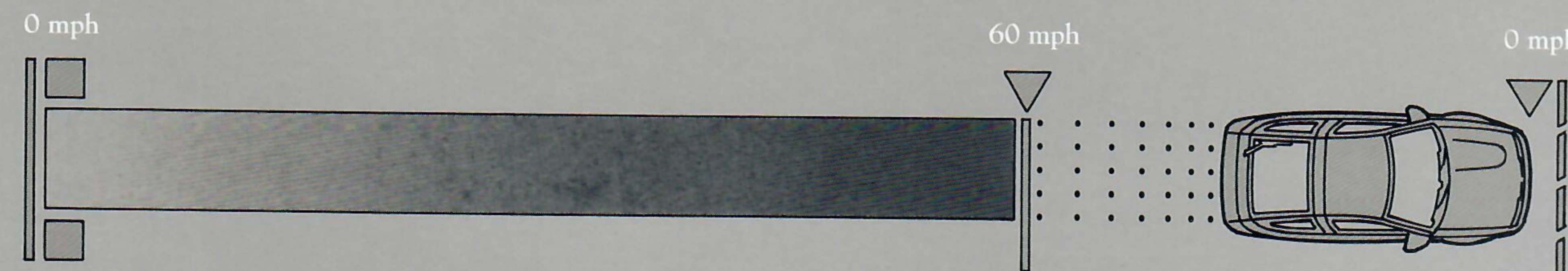
overheating. The tires are made with a special rubber compound developed to provide a smooth, quiet ride.

Eagle Talon TSi

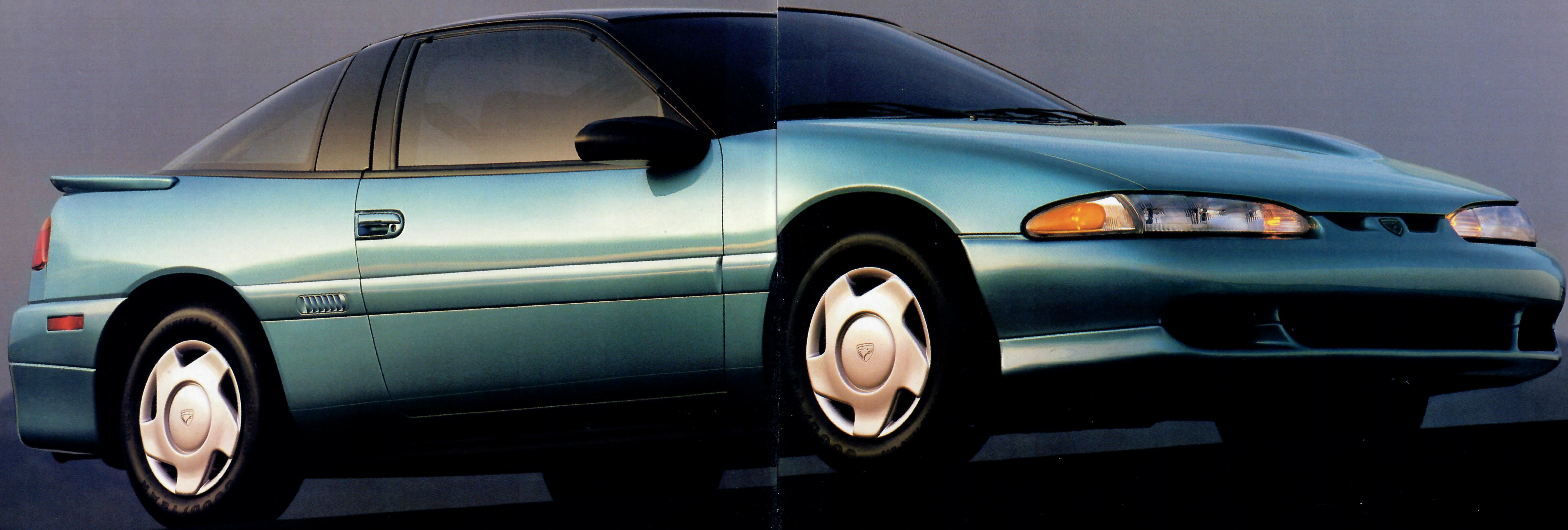


Talon produces outstanding figures at both ends of the performance envelope, with an acceleration/braking 0-60-0 time of 11.94 seconds.\*

\*Data based on independent 0-60-0 mph combined testing of Talon TSi AWD.









## It Was The Best Of Times: 0 To 60 In 6.5 Seconds.\*

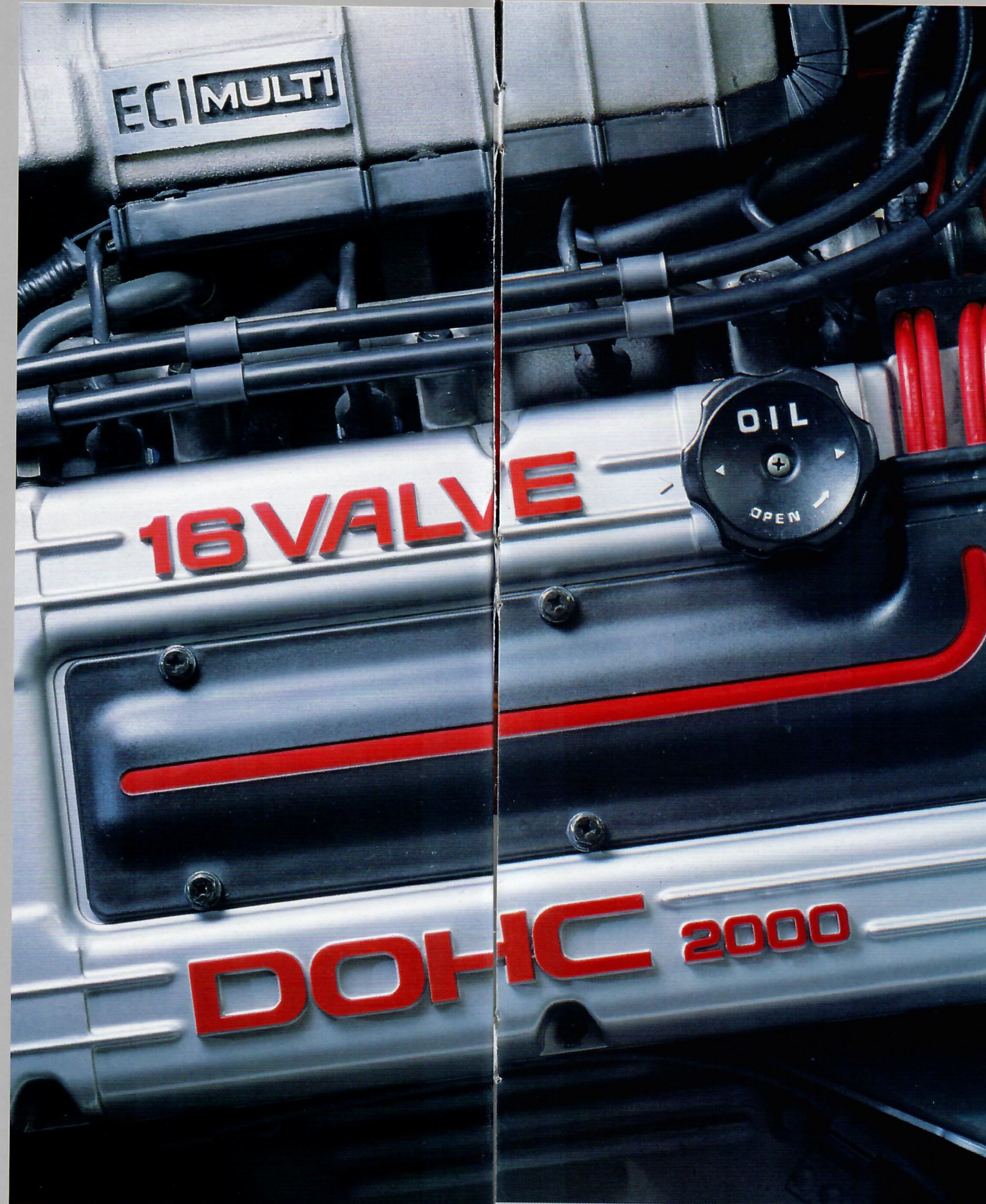
By the time ordinary cars are just getting up to speed, Talon TSi AWD's speed is up to 60 mph. Talon takes the measure of many expensive sports coupes as well. This impres-

sive performance is produced by an equally impressive powerplant—the 2.0 litre 16-valve dual overhead camshaft (DOHC) turbo. It produces 195 horsepower, among the highest in output of any production turbo of its size. Yet it does it with remarkable smoothness, quietness, and efficiency.

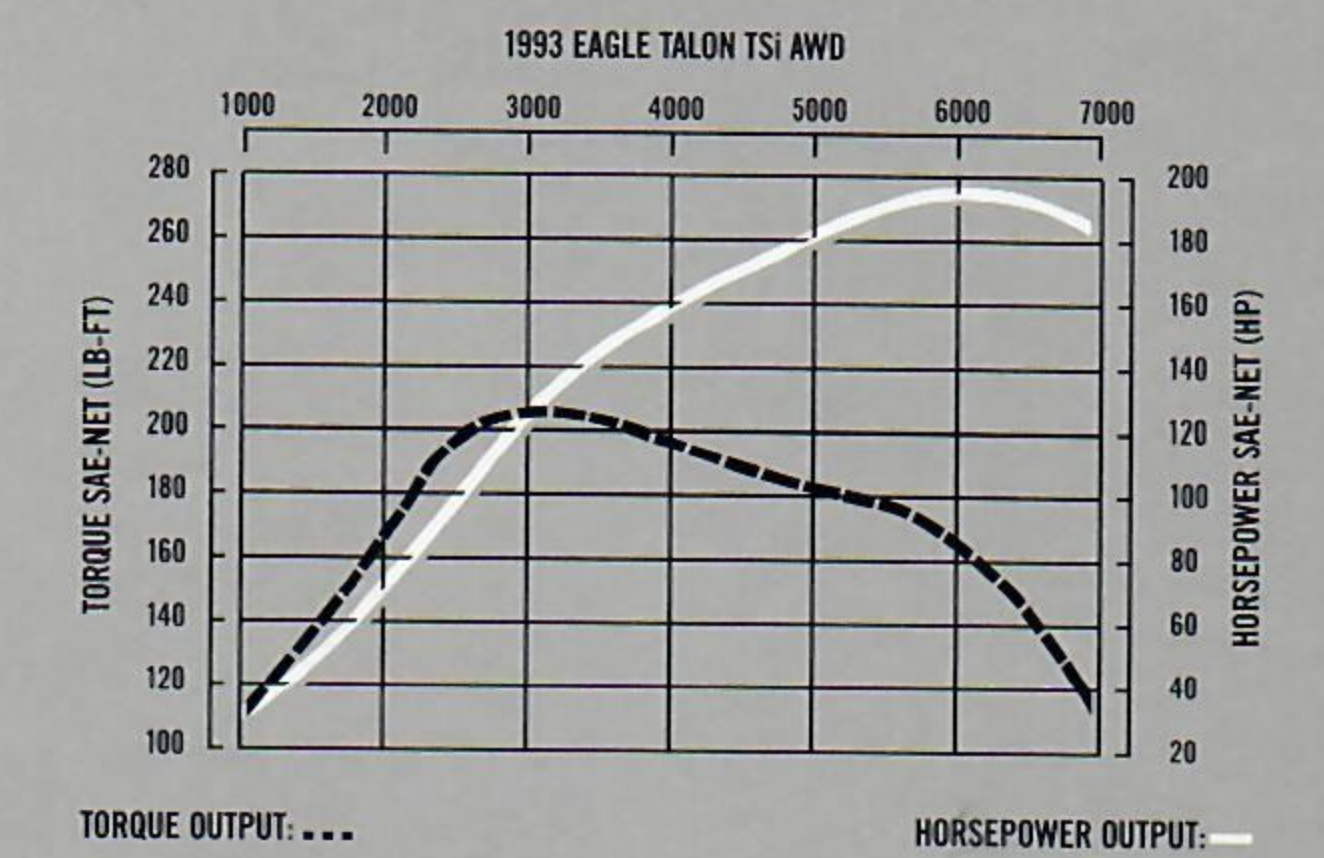
This is accomplished in a number of ways. Four valves per cylinder (2 intake, 2 exhaust) and a cross-flow port design increase air and fuel flow for greater power and torque. The dual overhead camshaft design boosts rpm and reduces internal friction. The pentroof design of the combustion chambers provides the desired turbulence for optimum performance. An electronically controlled, sequential multi-point fuel-injection system (one injector per cylinder) precisely manages fuel and air for optimum responsiveness and smoothness.



An optional 4-speed automatic overdrive transmission features a console-mounted Power/Economy switch and overdrive lockout button on the shifter.



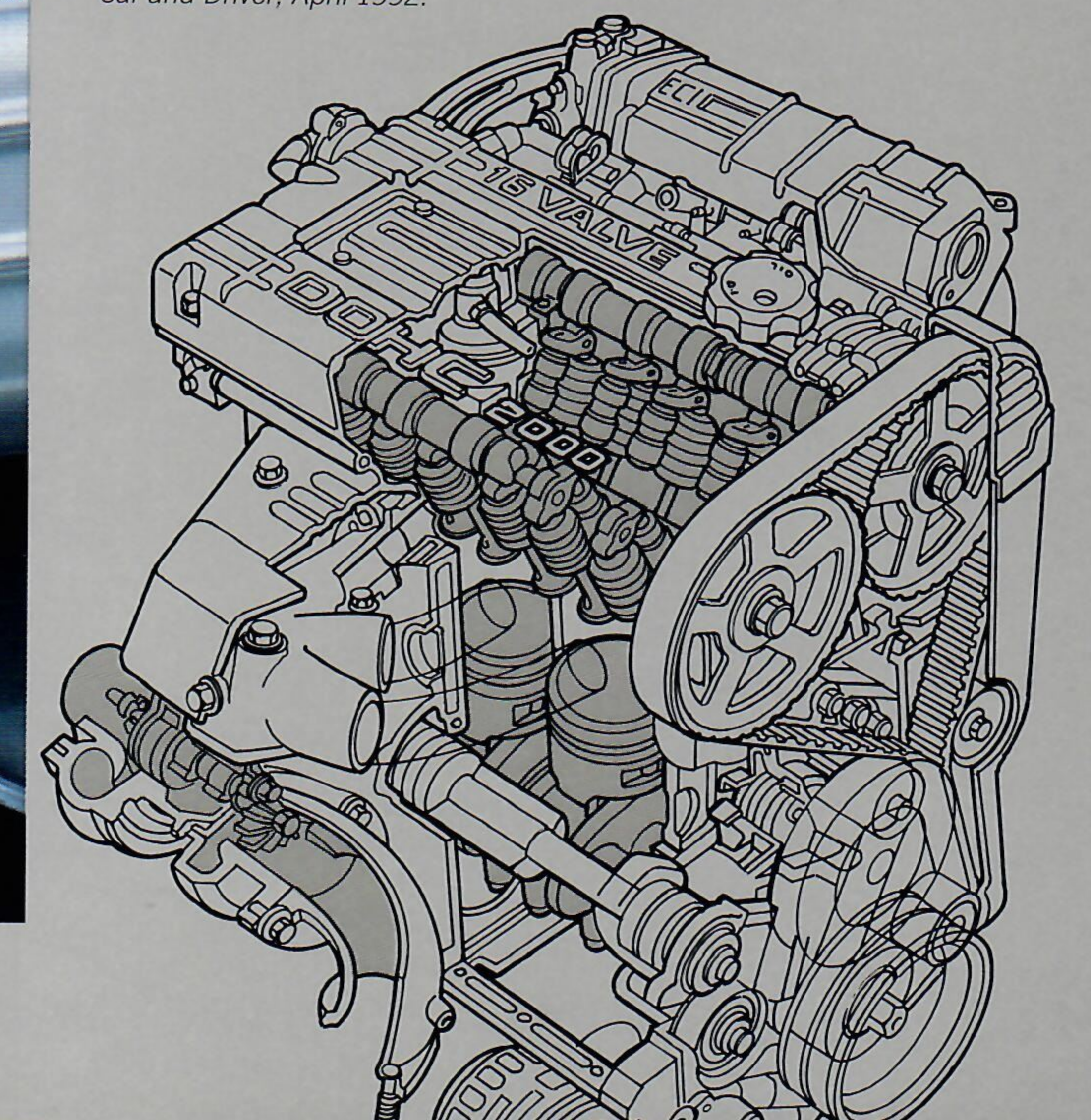
Talon's turbocharger significantly improves the engine's performance without sacrificing efficiency. The lightweight turbocharger provides a maximum 11.06 psi of boost. It features an air-to-air inter-cooler that raises air density to improve combustion and maximize output. A low rotary force impeller virtually eliminates turbo "lag" and provides instantaneous throttle response.



195 horsepower @ 6000 rpm; 203 foot-pounds of torque @ 3000 rpm.

A patented dual engine stabilizer design ("silent shafts") effectively cancels out engine vibration before it starts. Roller-type rocker arms reduce friction. This contributes measurably to engine efficiency and torque from idle to peak output. A cog-type rubber camshaft belt contributes to smooth, quiet operation.

\*Car and Driver, April 1992.



The 2.0 litre 16-valve dual overhead camshaft (DOHC) naturally aspirated engine, standard on Talon ES, is one of the most advanced, sophisticated engines in the world.





Eagle Talon TSi AWD interior with optional leather front seats with vinyl trim



## For Your Undivided Attention, We Gave It Ours.

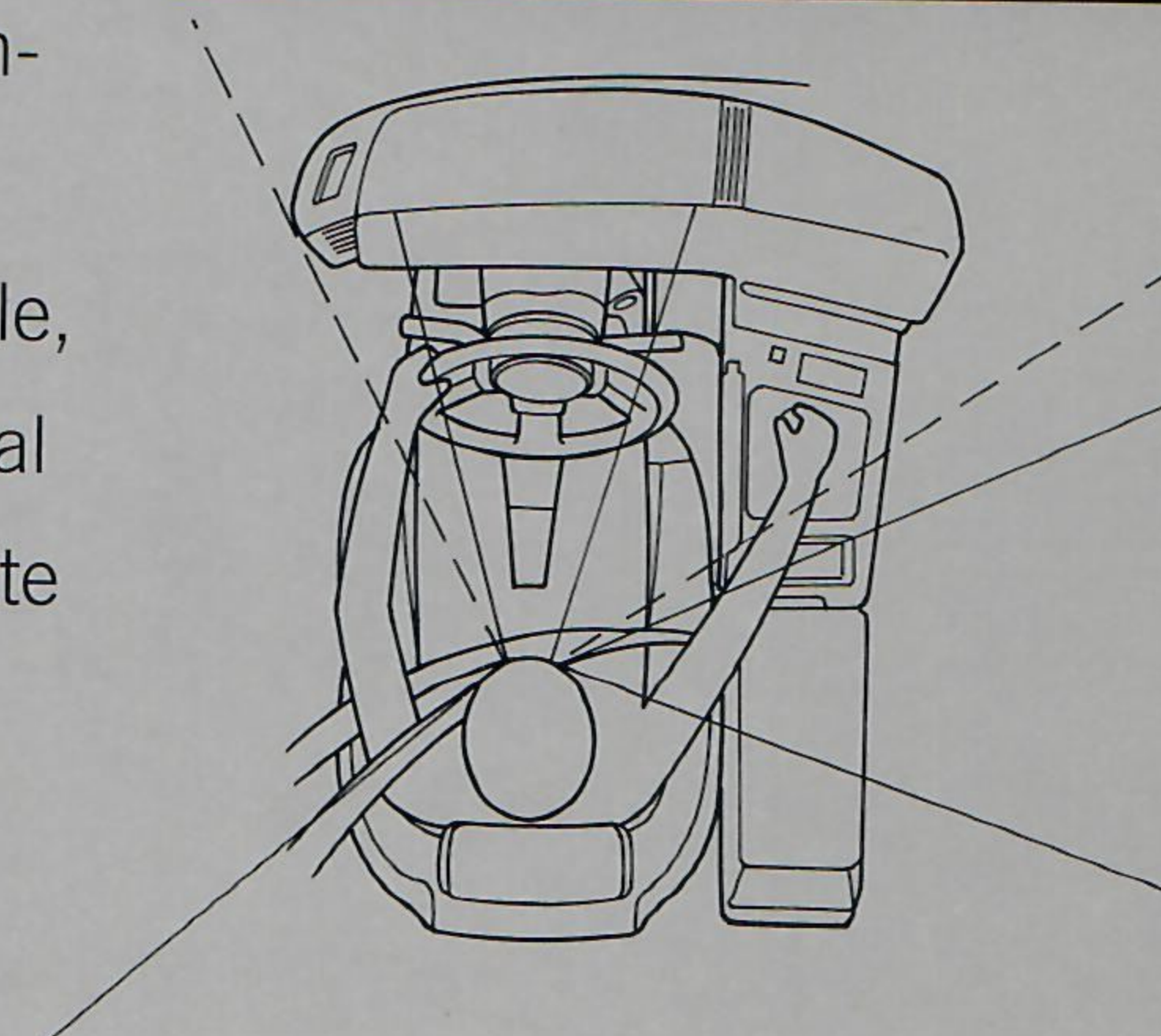
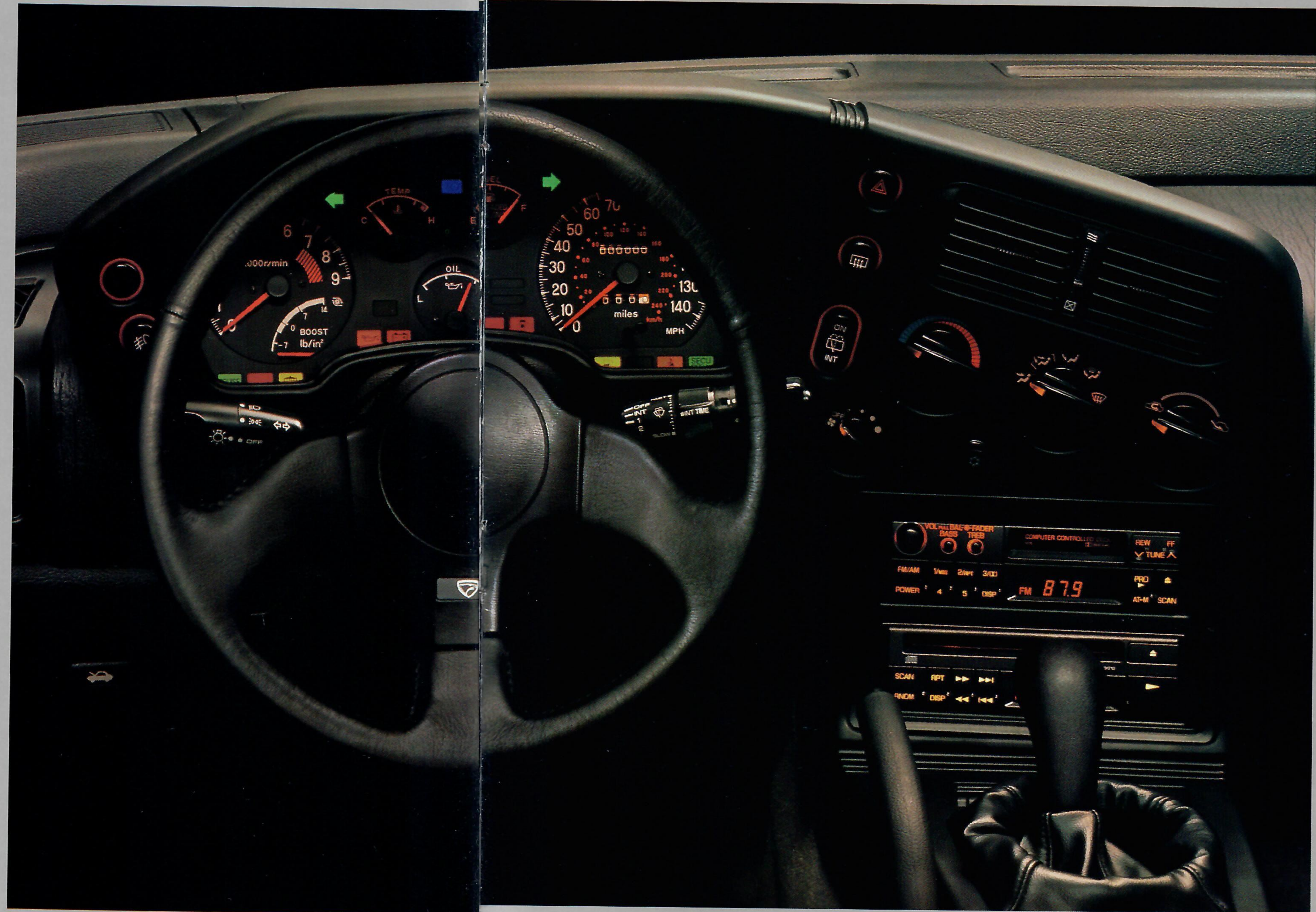
Talon's interior is the work of many designers, but it is designed from just one point of view: the driver's.

From the cockpit, you are master of all you survey. Every essential instrument is in clear view. Every control, within easy reach. Even the entire right-hand portion of the instrument cluster is rotated slightly toward the driver's position. Grip the sport steering wheel, and you experience the positive

road feel of Talon's "quick ratio" rack-and-pinion steering. The standard 5-speed floor shifter is a model of precision.

The TSi and TSi AWD feature an adjustable performance seat with side bolsters and driver's thigh and lumbar support. Driver's side armrest controls operate dual remote mirrors and optional power windows and door locks. Genuine leather front seats with vinyl trim are optional on TSi and TSi AWD. Leather-wrapped steering wheel and shifter are standard on those models.

Talon features an overhead light console, locking glove box, dual visor mirrors, a digital clock and six-speaker AM/FM stereo cassette



Talon's driver orientation includes proper sight lines, easy-to-read analog instrumentation, grippy sport steering wheel, and jewellike 5-speed floor shifter.

radio (optional on DL). Many other refinements are standard—tinted glass, bi-level heater/defogger, rear window defroster (optional on DL), variable intermittent windshield wiper/washer. Convenient options include air conditioning, rear wiper/washer, and pop-up sunroof.

Talon TSi AWD's cockpit includes a 145-mph speedometer, 9000-rpm tachometer with 7000-rpm redline and turbo-boost gauge, leather-wrapped steering wheel, and leather-covered pistol-grip 5-speed floor shifter.



(Top) A carpeted rear cargo area offers up to 25.7 cubic feet of space. (Middle) Split-folding rear seats accommodate longer cargo. (Bottom) Center console provides hidden storage for tapes, CDs, and a removable cup holder (optional on DL).



STANDARD FEATURES AND OPTIONS

S Standard O Optional\* - Not Available

TALON TSi AWD	TALON TSi	TALON ES	TALON DL
<b>FUNCTIONAL</b>			
<b>ALL-WHEEL DRIVE SYSTEM (AWD)</b> Full-time on-road performance, with viscous limited-slip center and rear differentials and a variable 50/50 front/rear power split bias	-	-	S
<b>BATTERY</b> Maintenance-free, 12-volt with 430 cold-cranking amps	S	S	S
<b>BRAKES</b> Power front ventilated disc/rear solid disc	S	S	S
Anti-lock brake system	-	O	O
<b>EMISSION TESTING**</b> California emission factory testing (mandatory and available only in the state of California)	S	S	S
<b>ENGINE</b> 1.8 litre I-4 with electronic multi-point fuel injection and single overhead camshaft (92 hp @ 5000 rpm and 105 lb-ft of torque @ 3500 rpm)	S	-	-
2.0 litre I-4 with electronic multi-point fuel injection, dual overhead camshafts, and four valves per cylinder (135 hp @ 6000 rpm and 125 lb-ft of torque @ 5000 rpm)	-	S	-
2.0 litre I-4 with electronic multi-point fuel injection, dual overhead camshafts, four valves per cylinder, and turbocharging with air-to-air intercooling (195 hp @ 6000 rpm and 203 lb-ft of torque @ 3000 rpm; auto. trans.-equipped models produce 180 hp @ 5500 rpm and 195 lb-ft of torque @ 3000 rpm)	-	-	S
<b>ENGINE CONTROLS</b> Electronic engine control computer to manage fuel-injection system, ignition, and all auxiliary engine controls; airflow sensor that measures atmospheric pressure and air temperature to aid fuel calibration of the fuel-injection system; optical distributor within the computer that "reads" light sensor beams to control ignition and fuel injection; oxygen sensor that monitors and helps maintain proper exhaust emissions	S	S	S
<b>EXHAUST SYSTEM</b> Stainless steel	S	S	S
Sport-tuned with dual chromed muffler exhaust tips	-	S	S
<b>FRONT-WHEEL DRIVE</b> With permanent-lube constant velocity joints	S	S	-
<b>FUEL TANK</b> 15.8-gallon capacity, tethered gas cap	S	S	S
<b>REMINDER TONE</b> Headlamp/parking lamp "on" feature	S	S	S
<b>SPEED CONTROL</b> Stalk-mounted controls	O	O	O
<b>STEERING</b> Manual rack-and-pinion (23.8:1 ratio)	S	-	-
Quick-ratio power rack-and-pinion (15.8:1 ratio)	O	S	S
<b>SUNROOF</b> Removable pop-up style, with sunshade	O	O	O
<b>SUSPENSION</b> Front—Independent, strut-type with coil springs, lower control arms, negative-offset/anti-dive geometry, and stabilizer bar	S	S	S
Rear—Semi-independent, three-link torsion axle with coil springs, trailing arms, and integral stabilizer bar	S	S	-
Rear—Independent, upper and lower lateral arms with coil springs, trailing arms with toe-control links, and stabilizer bar	-	-	S
Enthusiast Level Suspension—Firmer front and rear springs, shock absorbers, and stabilizer bars (Sport level on DL; Performance level on ES and TSi)	-	-	S
<b>TIRES</b> P185/70-R14 all-season black sidewall steel-belted radials	S	-	-
P205/55-R16 performance all-season H-speed-rated sidewall steel-belted radials	-	S	-
P205/55-R16 performance all-season V-speed-rated black sidewall steel-belted radials	-	-	S
Compact temporary spare	S	S	S
<b>TRANSMISSION</b> 5-speed manual with overdrive and clutch interlock	S	S	S
4-speed automatic with overdrive lockout button and a Power/Economy switch	O	O	O
<b>WHEELS</b> 14" x 5.5" steel with full sport-style wheel covers	S	-	-
16" x 6" sport-style polycast	-	S	-
16" x 6" 5-spoke turbine-style aluminum alloy	-	O	S
<b>WIPER/WASHER</b> Windshield, two-speed wipers with variable intermittent feature	S	S	S
Liftgate, with intermittent wiper feature	-	O	O

TALON TSi AWD	TALON TSi	TALON ES	TALON DL
<b>EXTERIOR</b>			
<b>AERO EFFECTS</b> —Rear spoiler, color-keyed, with integral center stop lamp	S	S	S
High-performance front fascia treatment, color-keyed	S	S	S
Lower bodyside aero/protective cladding	-	S	S
<b>DOORS</b> Wrapover-style with recessed color-keyed door handles	S	S	S
<b>GLASS</b> Tinted, all windows, including semi-flush side glass	S	S	S
<b>HEADLAMPS</b> Aero-style halogen with wraparound side markers	S	S	S
Fog lamps, lower fascia-mounted	-	S	S
<b>MIRRORS</b> Dual, mechanical remote-control, black	S	-	-
Dual, power remote-control, color-keyed	-	S	S
<b>MOLDINGS</b> Protective bodyside, color-keyed	S	-	-
<b>TAILLAMPS</b> Dark red/dark amber with integrated backup lamps	S	S	S
<b>INTERIOR</b>			
<b>AIR CONDITIONING</b> Features Euro-style rotating controls	O	O	O
<b>AUDIO SYSTEM</b> AM/FM electronically tuned stereo radio with four speakers	S	-	-
AM/FM electronically tuned stereo cassette with six speakers	O	S	S
Premium Audio System—Includes AM/FM electronically tuned stereo cassette with integral digital clock, seven-band graphic equalizer, and six premium speakers	-	O	O
Compact Disc Player System—Includes AM/FM electronically tuned stereo cassette with integral digital clock, six premium speakers, and compact disc player with scan/repeat/skip	-	O	O
<b>CARPETING</b> Passenger and cargo area, color-keyed	S	S	S
Front passenger area carpeted floor mats, color-keyed	O	S	S
<b>CIGARETTE LIGHTER</b> Convenient for power accessories	S	S	S
<b>CLOCK</b> Electronic digital, in radio	S	S	S
<b>COAT HOOKS</b> , Dual, rear seat area	S	S	S
<b>CONSOLE</b> Center-mounted with coin holder	S	-	-
Center-mounted with armrest/storage box, coin and cup holders	-	S	S
<b>DEFROSTER</b> Rear window, with timer feature	O	S	S
<b>DOOR PANELS</b> Molded	S	-	-
Molded with cloth insert, carpeted lower panel	-	S	S
<b>DRIVER'S FOOTREST</b> Integral, floor-mounted	S	S	S
<b>GLOVE BOX</b> Locking feature	S	S	S
<b>HEATER</b> Four-speed blower fan with bi-level distribution system	S	S	S
<b>INSTRUMENTATION</b> Full Sport analog gauges including tachometer, coolant temperature and oil pressure gauges, and trip odometer	S	S	S
Turbocharger boost pressure gauge	-	-	S
<b>LIGHTS</b> Overhead lighting console with dual overhead map lights, interior lamp (with delayed-off feature), cargo area, foot well, glove box, lighter, and ignition key illumination lights	S	S	S
<b>MIRRORS</b> Rearview with day/night feature	S	S	S
Dual visor vanity	S	S	S
<b>POWER WINDOWS AND DOOR LOCKS</b> Includes driver's window "one touch" down feature and driver's side door map pocket	-	O	O
<b>REMOTE-CONTROL RELEASE</b> Fuel-filler door and liftgate	S	S	S
<b>SEATS</b> Front—Highback cloth bucket seats with seatback recliners (driver's side lumbar adjustments on ES model)	S	S	-
Front—Performance-style reclining cloth bucket seats with driver's thigh, side, lumbar, and headrest adjustments	-	-	S
Rear—Cloth two-passenger seat with split-folding seatback (cloth and vinyl trim on DL)	S	S	S
Front/Rear—Genuine leather with vinyl trim front seats/ Ultra-Hide vinyl-covered rear seat	-	-	O
<b>SEAT BELTS</b> Front—Two automatic two-point shoulder belts with manual lap belts	S	S	S
Rear—Two manual three-point shoulder/lap belts	S	S	S

TALON TSi AWD	TALON TSi	TALON ES	TALON DL
<b>STEERING WHEEL</b> Sport-style three-spoke	S	S	S
Leather-wrapped steering wheel and gear shift handle	-	-	S
Tilt steering column	S	S	S
<b>TONNEAU COVER</b> Removable cargo security cover	O	S	S

\*Some optional equipment is available only as part of an option group, or requires the purchase of additional optional model features. See salesperson for more information. \*\*California emission package required at no extra cost on all vehicles registered in California. Not available otherwise. †Special engine cooling requirements for non-factory air conditioning. ‡Failure to follow requirements may invalidate warranty. See your dealer for details.

<b>DIMENSIONS</b> (inches unless otherwise specified)	
<b>EXTERIOR</b>	
Wheelbase	97.2
Overall Length	172.4
Track, Front/Rear	57.7/57.1*
Overall Width	66.9*
Overall Height	51.4*
<b>STEERING DIAMETER</b>	
Curb-to-Curb (ft)	35.4*
Steering Wheel Turns, Lock-to-Lock	2.7*
<b>INTERIOR</b>	
Headroom, Front/Rear	37.9/34.1
Legroom, Front/Rear	43.9/28.5
Shoulder Room, Front/Rear	53.9/52.4
Hiproom, Front/Rear	55.1/45.7
Cargo Room (cu. ft.) with Rear Seatback Up/Down	10.2/25.7†
EPA Total Interior Volume (cu.ft.)	91
<b>CURB WEIGHT (LBS.)</b>	
Talon DL/ES/TSi/TSi AWD	2550/2712/2791/3108

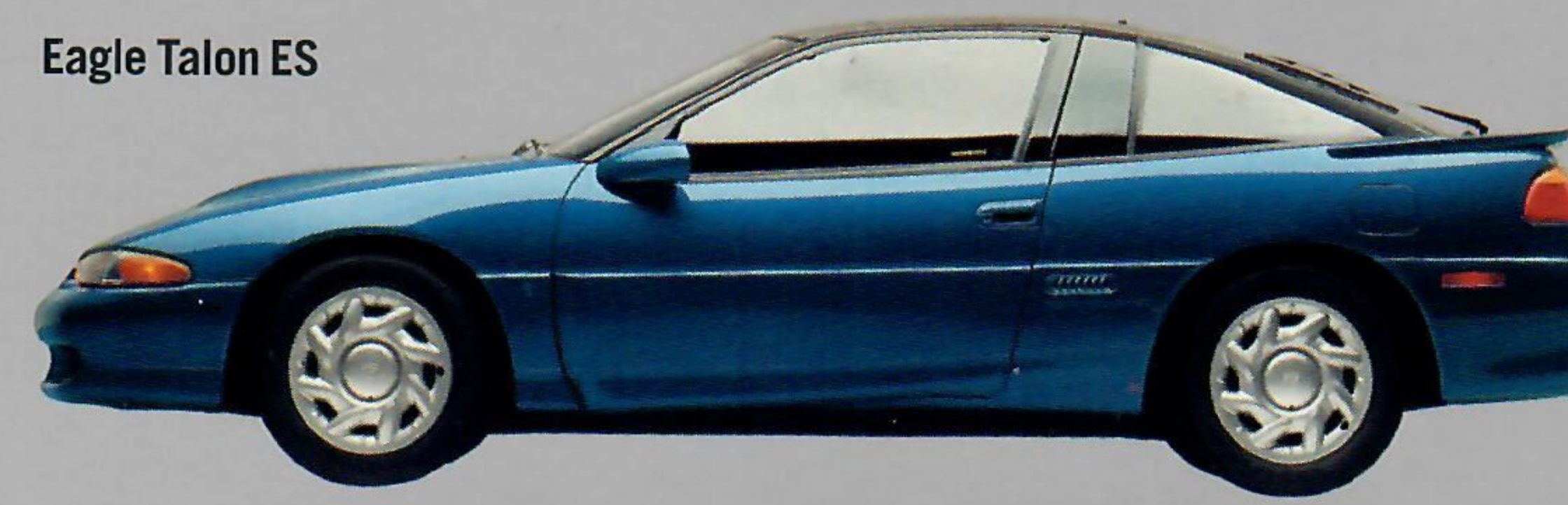
<b>EPA FUEL ECONOMY RATINGS</b> (CITY/HWY.) <sup>‡</sup>					
		DL	ES	TSi	TSi AWD
1.8L	5-Speed Man.	23/32	—	—	—
	4-Speed Auto.	23/30	—	—	—
2.0L	5-Speed Man.	—	22/29	—	—
	4-Speed Auto.	—	22/27	—	—
2.0L Turbo	5-Speed Man.	—	—	21/28	20/25
	4-Speed Auto.	—	—	19/23	18/21

\* 57.3 TSi AWD † 66.7 DL ‡ 52.0 TSi AWD † 39.0 with turbo and auto trans.; 34.1 DL model with manual steering. ‡ 2.4 with turbo and auto. trans.; 4.2 DL model with manual steering. † 6.9/22.4 TSi AWD ‡ EPA figures are for comparison. Your results may differ.

	TALON DL		TALON ES			TALON TSi & TALON TSi AWD			
	Jasper Cloth		Gemini/Bishop Cloth			Malibu/Bishop Cloth		Genuine Leather Front Seats with Vinyl Trim (Opt.)	
Interior Trim Color	Crimson Red	Dark Gray	Crimson Red	Dark Gray	Medium Quartz	Crimson Red	Dark Gray	Buckskin	Dark Gray
<b>EXTERIOR COLORS</b>									
Black	•	•	•	•	•	•	•	•	•
Electric Blue Metallic		•		•	•		•		•
Medium Quartz Metallic	•	•	•	•	•	•	•	•	•
Deep Green Pearl Coat		•		•	•		•		•
Radiant Red		•		•	•		•		•
Medium Red Pearl Coat	•		•		•	•		•	•
Turquoise Metallic		•		•	•		•		•
Bright White*	•	•	•	•	•	•	•	•	•

\*Aluminum wheel color based on exterior color ordered: Argent with Radiant Red, Turquoise, Electric Blue, and Bright White; Quartz with Black, Medium Quartz, Deep Green, and Medium Red. Note: All paints are clearcoat finish and offered as standard equipment at no extra cost.

1993 EAGLE TALON



**COLOR & TRIM**

Black	Electric Blue Metallic	Medium Quartz Metallic	Deep Green Pearl Coat
Radiant Red	Medium Red Pearl Coat	Turquoise Metallic	Bright White

Note: Due to occasional printing irregularities, the colors shown may vary slightly from actual hues.



COMMITMENT

## Where You Can Be Something Nobody Else Is: Yourself

From the moment you enter a Jeep and Eagle dealership, you won't be treated just like anyone else. Because, frankly, we know the

reason you choose to drive a Jeep or an Eagle is precisely *because* you're not like everyone else.

Knowing that, we've created Customer One, a comprehensive dealership program dedicated to your total satisfaction. So whether you need vehicle specifications, pricing information, or an appointment for service, you

will benefit from the attention given by every member of our dealership family.

With your choice of Jeep and Eagle models comes a warranty choice no other manufacturer offers. It's the Owner's Choice Protection Plan. Choose between our exclusive 7-year/70,000-mile powertrain warranty or 3-year/36,000-mile bumper-to-bumper coverage. Either way, you'll never pay a deductible. Just see limited warranties, restrictions,

and details at your dealer. Excludes normal maintenance, adjustments, and wear items.

Additional peace-of-mind protection for Jeep and Eagle vehicle owners is available through optional Chrysler Service Contracts.

These services are available in a variety of time and mileage combinations to meet your needs.

Chrysler Credit offers a variety of finance programs that can help



*Making the best  
even more affordable*

make your new Jeep or Eagle vehicle even more affordable. These flexible finance and lease programs can be tailored to suit your budget and lifestyle. They include Advantage: Gold Key Lease, College Graduate Plans, Retail Financing, and other special payment plans. Ask your salesperson for details.

Your ownership experience can be further enhanced by selecting from a variety of Mopar accessories designed to help equip your vehicle to your individual needs. Many of these accessories can be installed prior to delivery of your new vehicle. Ask your dealer for information on genuine Mopar accessories.



Two-time Formula One Champion and Indianapolis 500 winner Emerson Fittipaldi contributes considerable talents as a consultant to the development of Jeep and Eagle vehicles.

**PHYSICALLY-CHALLENGED ASSISTANCE PROGRAM**  
Cash reimbursement up to \$500 for purchase and installation of adaptive driving aids or passenger equipment on new 1992 Chrysler Corporation trucks or vans. For further information, contact your dealer or the Physical Challenged Resource Center at 1-800-255-4

All product illustrations and specifications are based upon current information at the time of publication approval. Although descriptions are believed correct, accuracy cannot be guaranteed. Chrysler Corporation reserves the right to make changes from time to time, without notice or obligation, in prices, specifications, colors, and materials and to change or discontinue models. Some of the equipment shown or described throughout this catalog is available at extra cost.



Litho in U.S.A. 9/92 Buckle up for safety. Item No. 38001



**Eagle Talon.  
Not Intended For The General Public.**



(Top) Jeep Grand Cherokee Limited and (Bottom) new Eagle Vision TSi.







**Eagle Talon.  
Not Intended For The General Public.**



Division of the Chrysler Corporation.



Official Sponsor  
1994 U.S. Olympic Team  
36 USC 350