

1 9 9 8 C H E V R O L E T

COMMERCIAL VEHICLE BUYER'S GUIDE



LIKE A ROCK





Left to right: C3500 HD C/K Chassis-Cab with dump box from an independent supplier, shown in Summit White; G3500 Chevy Van, shown in Summit White; and C2500 C/K Cheyenne Regular-Cab Long-Box

CHEVY TRUCKS. LONG-LASTING DEPENDABILITY IS OUR BUSINESS.

You know what you need in a work truck. And so do we. Chevrolet offers a wide range of Commercial Specialty Vehicles that can match virtually every work application. In fact, we offer more light-duty truck models than anyone else. Chevy trucks are dependable and long-lasting. And that means you can count on them, year after year, mile after mile, to meet your business needs. Powerful Vortec engines, rugged chassis components and durable, corrosion-resistant bodies make Chevy trucks incredibly strong, versatile and dependable workhorses. Whatever the job demands, there's a Chevy truck, van or chassis-cab to get it done. Because when it comes to providing uncompromised power, ruggedness and strength, we mean business.



CHEVY TRUCK. YOUR PARTNER FOR THE LONG HAUL.

Your commercial truck or fleet is an essential business tool. That means you need to rely on your vehicles for strong, dependable service day in and day out. Chevy trucks are more than up to this task. And they've got what it takes to go the distance. In fact, of all Chevy trucks sold in the past 10 years, more than 93 percent are still on the job.* That's more than any other full-line light-duty truck company. Our chassis have been providing long-lasting dependability to legions of owners over millions of miles, with bodies that are durable and corrosion-resistant. Chevy trucks are designed with the power, strength and ruggedness that will keep your business on the road and working for years to come.

**Based on 1987-1996 Chevrolet light-duty truck registrations.*

CORROSION-RESISTANT EXTERIOR BODY PANELS.

Two-side galvanized steel exterior body panels (except the roof) virtually eliminate corrosion from minor scratches and chips.

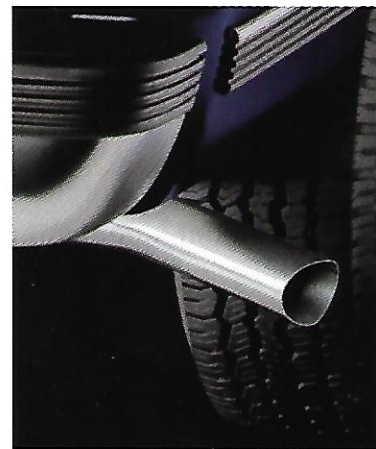
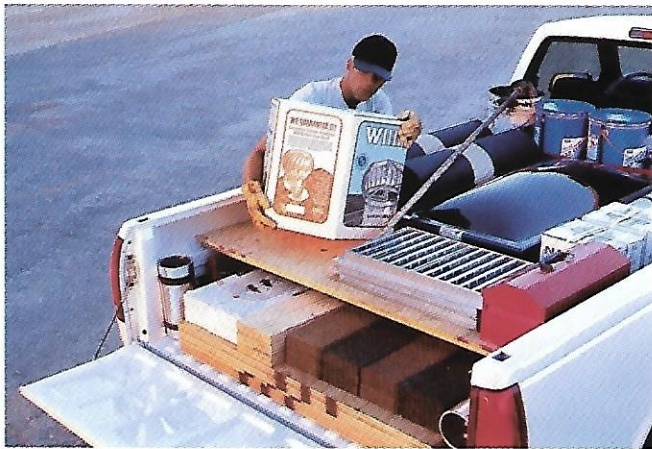


SCOTCHGARD™ PROTECTOR.

To help resist stains and make cleanups easy, the floor carpeting, cloth seats and cloth door panels (in models equipped with these features) are mill-treated with stain-resistant Scotchgard™ Protector.

LOADING VERSATILITY.

Two-tier cargo loading is easy with Fleetside cargo pickup boxes, which can be outfitted with 2"x 6"s to create two loading tiers — or separate upper and lower cargo areas.



STAINLESS-STEEL EXHAUST SYSTEMS.

Chevy Truck exhaust systems are designed for long-lasting durability. The muffler and all pipes from the converter back are made of corrosion-resistant aluminized stainless steel.

CHEVY TRUCK KNOWS HOW TO MEET YOUR BUSINESS NEEDS.



The Chevrolet Commercial Specialty Vehicle Department will get you up and running by helping you choose the right truck for the job. Our specially trained personnel offer in-depth product knowledge, as well as the programs and services that will keep your business going strong. They can help you spec out different types of vehicle bodies, answer questions about equipment packages and provide financing information. It's easy to get in touch with a specialist. Just see your Chevrolet Commercial Specialty Vehicle dealer or call the CSV Express Line at 1-800-759-5550.



ASTRO CARGO VAN.

Astro Cargo Van is an exceptionally versatile and accommodating midsize van. Shown with bins from an independent supplier.

G3500 COMMERCIAL CUTAWAY.

Chevy Van Commercial Cutaway models are available in four GVWRs of 9,500 lbs. to 12,000 lbs., in three wheelbases of 139", 159" and 177". G3500 Chevy Van Commercial Cutaway with Ambulance Body Package from an independent supplier shown.



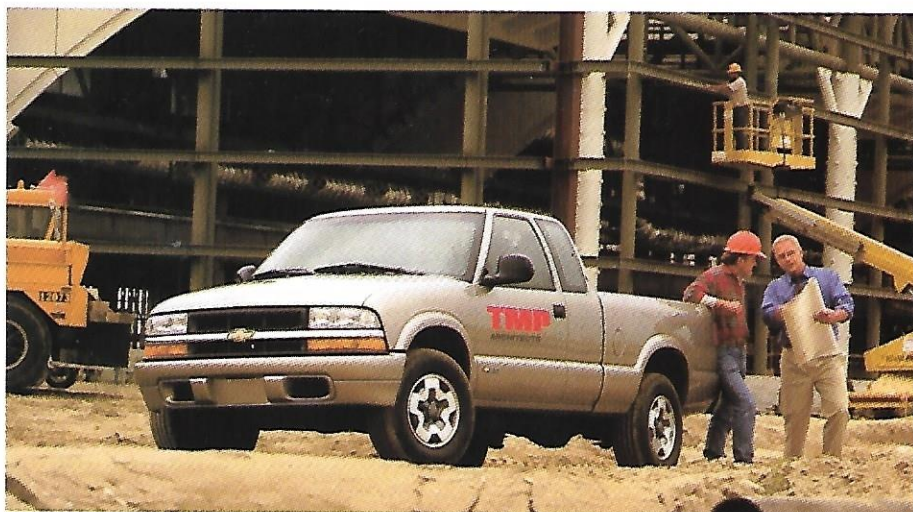
G3500 HD CHASSIS-CAB.

The C3500 HD Chassis-Cab offers strong performance, exceptional versatility and long-lasting durability. Buyers have a choice of a Vortec 7400 V8 SFI gasoline engine or a 6.5 Liter Turbo-Diesel V8 engine and can choose from three wheelbase lengths. Shown: C3500 HD Chassis-Cab with wrecker body provided by an independent supplier.

A NOTE ABOUT VEHICLE ALTERATIONS BY INDEPENDENT SUPPLIERS:

Most Commercial Specialty Vehicles are altered or upfitted with equipment, bodies or components that are supplied to Chevrolet by outside manufacturers independent of Chevrolet. Chevrolet is not responsible for the safety or quality of design features, materials or workmanship of any alterations by any such manufacturer. Installations or alterations to the original equipment vehicle (or chassis) as distributed by General Motors are not covered by the General Motors New Vehicle Limited Warranty. The special body company, assembler, equipment installer or upfitter is solely responsible for warranties on the body or equipment and any alterations (or any effect of the alterations) to any of the parts, components, systems or assemblies installed by GM.

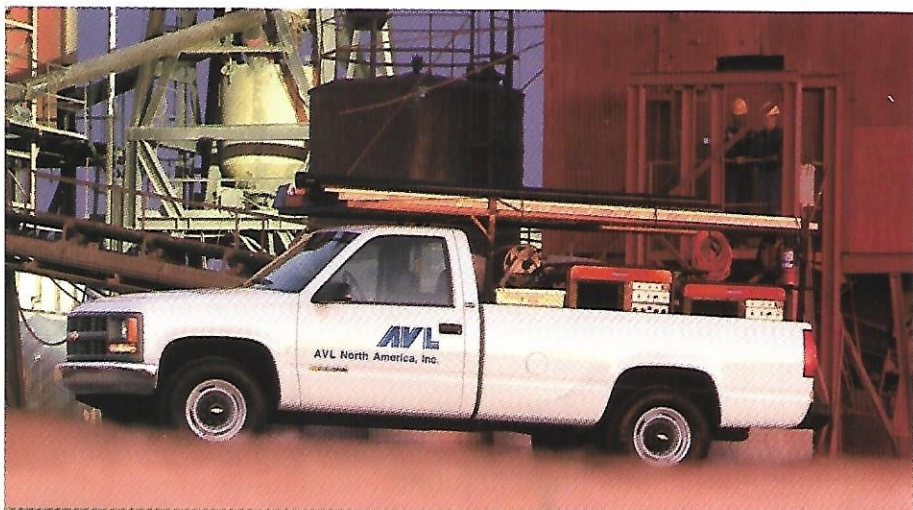
PICKUPS



S-10 PICKUP.

Chevy S-10 Pickup offers impressive dependability, excellent utility and aggressive power. Choose from the improved Vortec 2200 4-cylinder engine (standard on 2WD models) or the Vortec 4300 V6 — the largest V6 you can get in any truck. The optional 4-speed electronically controlled OD automatic transmission features a revolutionary design that increases powertrain stiffness while reducing noise and vibration. Safety features include 4-wheel ABS and Next Generation driver and right front-passenger air bags.* The optional driver-side third door on S-10 Extended-Cab Pickup makes loading and unloading even easier. S-10 Pickup delivers the power and ruggedness you demand. And it's just waiting to be put to work.

*Always wear safety belts, even with air bags.



C/K REGULAR-CAB PICKUP.

Chevy C/K Regular-Cab Pickup is recognized everywhere as the dependable, long-lasting full-size pickup built for tough, rugged use. But it also delivers full-size comfort and style. Its interior offers room for up to three across, while its ergonomic design makes it a pleasure to drive. All C/K Pickup models with GVWRs below 8,600 lbs. feature Next Generation driver and right front-passenger air bags,* as well as standard 4-wheel ABS. The enhanced 4-speed electronically controlled OD automatic transmission works more efficiently, while the heavy-duty OD automatic transmission features increased torque capacity and enhanced operating efficiency.

*Always wear safety belts, even with air bags.



C/K EXTENDED-CAB PICKUP.

Chevy C/K Extended-Cab Pickup offers exceptional versatility for business or personal use. You'll find seating for up to six with plenty of breathing room plus abundant storage for tools and equipment. The optional passenger-side third door for C/K1500 Silverado Extended-Cab provides convenient access to tools and cargo, and makes it easy for rear-seat passengers to get in and out.* All C/K Pickups with GVWRs below 8,600 lbs. include standard Next Generation driver and right front-passenger air bags.† Available electronically controlled 4-speed OD automatic transmissions offer durability and improved operating characteristics. Extended-Cab versatility is available in all C/K Pickup models, including the C/K3500 Extended-Cab "Big Dooley," with a 10,000-lb. GVWR and standard dual rear wheels.

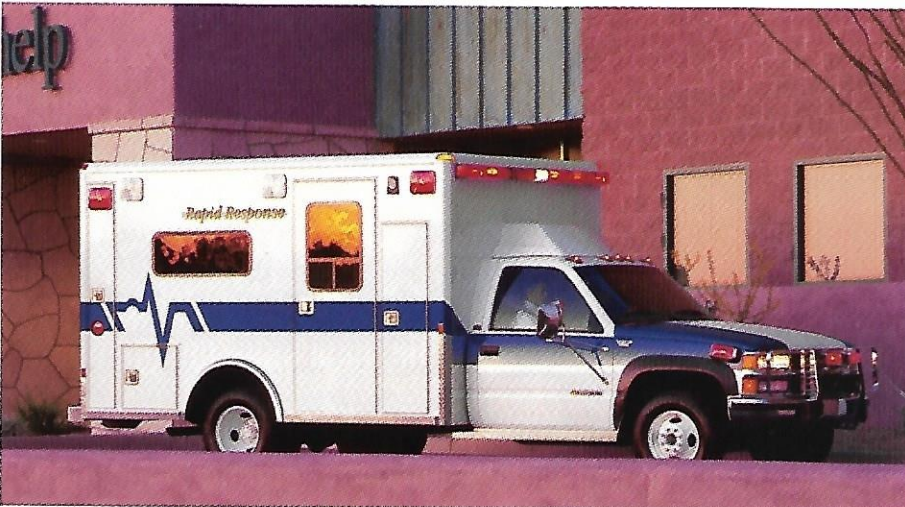
*The third door option is available only on the C/K1500 Extended-Cab Short-Box Pickup with Silverado trim. Requires Vortec 5000 V8 or Vortec 5700 V8 and automatic transmission. †Always wear safety belts, even with air bags.

CREW-CABS AND CHASSIS-CABS



C/K CREW-CAB CHASSIS-CABS.

Designed to accommodate your specialty body, C/K Crew-Cab Chassis-Cab is an efficient vehicle for moving a crew and its equipment to and from a work site. This C/K offers full-size, four-door comfort for up to six passengers, GVWRs up to 10,000 lbs. and plenty of power to haul and tow. Choose between two Vortec V8 gasoline engines or a newly enhanced 6.5 Liter Turbo-Diesel V8 HD engine. The standard 5-speed heavy-duty OD transmission has a first-gear deep low feature that provides impressive launch capabilities for heavy loads, or on hills and mountainous terrain. Offered in both 2WD and 4x4 models, C/K Crew-Cab Chassis-Cab is available with standard single rear wheels or optional "Big Dooley" dual rear wheels. With your specialty body and the long-lasting dependability of C/K Pickup, you truly have the best of both worlds.



C/K CHASSIS-CABS.

Whether you've just sent a crew out with all its equipment or you're transporting a patient across town, the dependable, long-lasting C/K Chassis-Cab gets the job done. With its reliable Vortec power and long service intervals, this C/K is built to last. It's also built to handle a variety of specialty bodies from independent suppliers. Available C/K3500 Regular-Cab Chassis-Cab straight-frame-rail models help it adapt to these bodies easily. Conventional models handle GVWRs up to 11,000 lbs. (2WD) and 12,000 lbs. (4x4), and a choice of single or dual rear wheels is available, depending on the model and GVWR chosen. The independent front suspension offers a smooth ride, while the low body-installed height promotes easy loading. A wide-track rear axle option is available for ambulance conversions and other applications.



C3500 HD CHASSIS-CAB.

For your toughest and most demanding commercial jobs, look to the impressively strong C3500 HD Chassis-Cab. Offering a standard 15,000-lb. GVWR for heavier-duty applications, it features a massive 5,000-lb. capacity solid I-beam front axle. Combined with tapered leaf springs and a stabilizer bar, its sheer brute strength translates to long-lasting durability. This truck tows big, too. When properly equipped, the Gross Combination Weight Rating (GCWR) can reach a massive 19,000 lbs. Add the safety feature of a standard 4-wheel anti-lock brake system (ABS) and exceptional comfort and roominess, plus a wide range of options and available wheelbases, and the C3500 HD Chassis-Cab is ready for virtually anything. It's a heavy-duty performer — and one you can't afford to be without.

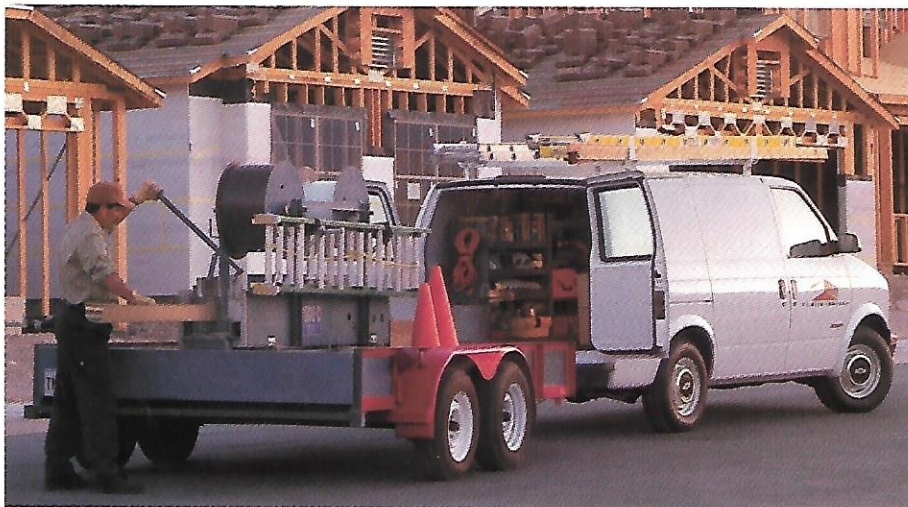
VANS



CHEVY VENTURE CARGO VAN

The new Chevy Venture Cargo Van offers excellent versatility, including the convenience of three or four doors. Agile and responsive, Venture Cargo Van combines impressive V6 power and efficiency with enough cargo space to fit a 4' x 8' sheet of plywood with the doors closed, creating an exceptionally competent vehicle for business deliveries and errands. Easy to maneuver and park, it's also an ideal city worker. Comfortable and supportive seating for two is joined by a generous list of features that help get the job done. Safety features include standard Next Generation driver and front-passenger air bags,* new driver- and front-passenger side air bags and 4-wheel ABS. Venture Cargo Van can also tow up to 3,500 lbs., when properly equipped.

**Always wear safety belts, even with air bags.*



ASTRO CARGO VAN.

Each day, Astro Cargo Van provides the power, strength and dependability you need — in an exceptionally capable and accommodating midsize van. You'll find a generous 170.4 cu. ft. of cargo space, and enough cargo floor width and length to accommodate a 4' x 8' sheet of plywood with the doors closed. Astro Cargo Van also offers a towing capacity of up to 5,500 lbs. (when properly equipped). With its solid construction and responsive 190 hp Vortec 4300 V6 SFI engine, the rear-wheel-drive Astro Cargo Van is ready to work. And it's designed to help keep you safe, with standard Next Generation driver and front-passenger air bags*, 4-wheel ABS and Daytime Running Lamps. An All-Wheel-Drive model is also available.

**Always wear safety belts, even with air bags. Next Generation driver and passenger air bags will be available interim 1998 model year.*



CHEVY VAN.

Strong, spacious and safe, Chevy Van is one tough, dependable full-size van. The rear-door design allows them to swing clear to provide a 56.9" opening for loading — wider than Ford Econoline and Dodge Ram Van. Even standard pallets go right in. Strong vertical reinforcing ribs are exposed in the generous cargo area, helping make it easy to mount aftermarket equipment. Or, turn Chevy Van into a mobile office, with a standard power outlet for a cellular phone and abundant storage compartments. 4-wheel ABS is standard as well as Next Generation driver and front-passenger air bags.* For outstanding full-size toughness and strength, the choice is Chevy Van.

**Always wear safety belts, even with air bags. Next Generation passenger air bag will be available interim 1998 model year.*

CUTAWAYS AND P-CHASSIS



CHEVY EXPRESS.

If you're in the people-hauling business, your van is Chevy Express. The G3500 Extended Wheelbase model (155") offers standard seating for 12 or optional seating for 15 in spacious comfort with rear cargo space to spare. Passengers have easy entry and exit with a passenger assist handle and wheelwells that don't block access to front seats. Safety features include Next Generation driver and front-passenger air bags,* 4-wheel ABS and side door beams. A 31-gallon fuel tank means fewer fill-ups, and its rugged, steel ladder-type frame helps ensure an exceptionally smooth ride for all of your passengers.

*Always wear safety belts, even with air bags. Next Generation passenger air bag will be available interim 1998 model year.



G3500 CUTAWAY VAN CHASSIS.

Team your commercial cube body with our rugged G-Cutaway Van chassis, and you're ready for business. G3500 Cutaway Van combines thoughtful design, impressive strength and innovative engineering to create an exceptional chassis. Here's where full-size G3500 cab comfort and big load-carrying capacities meet — a 4,300-lb. front axle capacity is standard, while GVWRs up to 12,000 lbs. are available. The spacious cab is designed with ample space up front that makes getting in and out easy. There's also plenty of legroom. Choose between two Vortec V8 engines or an enhanced 6.5 Liter Turbo-Diesel engine, all of which are teamed with a standard electronically controlled, heavy-duty, 4-speed automatic Overdrive transmission.



FORWARD CONTROL P-CHASSIS.

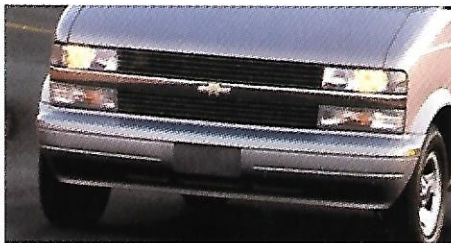
When it comes to heavier-duty hauling, Forward Control P-Chassis is a specialist. Forward control van applications are right at home on the solid P-Chassis ladder-type frame, and the driver will appreciate the smooth ride provided by its independent coil suspension. An enhanced standard heavy-duty, electronically controlled, 4-speed automatic OD transmission provides smooth shifting. Five available wheelbase lengths adapt to a wide range of applications, and commercial GVWRs of up to 14,100 lbs.* are available. For a lower body-floor height, select an 8,600-lb. GVWR P-Chassis with 110" or 125" wheelbase. All Forward Control P-Chassis models feature standard 4-wheel ABS.

*14,500 lbs. with available School Bus Chassis Equipment.

SAFETY AND SECURITY FEATURES YOUR BUSINESS CAN DEPEND ON.

When you're seeking a business partner you can trust, remember that every Chevy truck comes with a multitude of designed-in safety features. There are many important crash avoidance and occupant protection features. For example, 4-wheel ABS and Daytime Running Lamps are standard on all trucks (except Forward Control P-Chassis; includes Automatic Exterior Lamp Control on S-10 Pickup and Chevy Venture Cargo Van models). Next Generation driver and right front-passenger air bags* are now standard on most Chevy truck models. But that's only part of the Chevy Truck safety story. All models also feature solid safety-cage construction, front and rear crush zones, steel side door beams and head restraints at outboard front seating positions. As the full safety list on the next page indicates, Chevy Truck focuses on providing safety and security features you can depend on, so that you can focus on getting the job done.

**Always wear safety belts, even with air bags. See note on child safety below.
(Also see note on Next Generation air bag availability on next page.)*



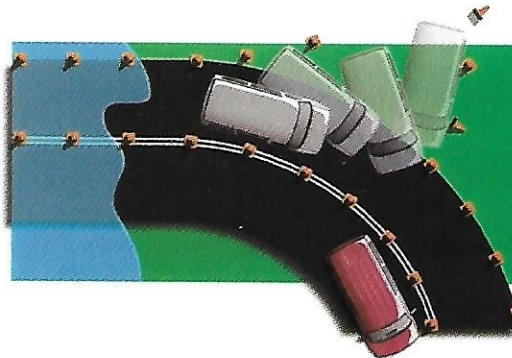
DAYTIME RUNNING LAMPS.

During daytime driving situations, reduced-intensity headlamps (or, on Chevy Venture Cargo Van, park/turn lamps) come on to alert other roadway users to your oncoming vehicle. Venture Cargo Van and S-10 Pickup models also include Automatic Exterior Lamp Control, which switches exterior lamps to full intensity according to light conditions.



SIDE DOOR BEAMS.

Double-wall steel doors are reinforced with structural steel beams designed to help avoid intrusion into the passenger compartment during shallow-angle side collisions.



ANTI-LOCK BRAKE SYSTEM.

Four-wheel ABS is designed to help keep you in control by reducing wheel lockup while braking hard on most slippery surfaces.

A NOTE ON CHILD SAFETY. Children are generally safer if they ride in a rear seat using the appropriate child safety seats and restraints, which is why General Motors recommends that child safety seats be properly secured in a vehicle's rear seat. This includes an infant or child riding in a rear-facing seat or a forward-facing child seat, and an older child riding in a booster seat. See your vehicle's owner's manual and child safety seat's instructions for more information.

FEATURES DESIGNED WITH YOUR CREW'S SAFETY AND SECURITY IN MIND.

SAFETY/SECURITY FEATURES

NOTE: Some features listed may not be available in all models. Check with your Chevy Truck dealer for current feature availability by model.

	S-10 PICKUP	C/K PICKUP/ CHASSIS-CAB/ CREW CAB	CHEVY VENTURE CARGO VAN	ASTRO CARGO VAN	CHEVY VAN	CHEVY EXPRESS	G3500 COMMERCIAL CUTAWAY VAN	FORWARD CONTROL P-CHASSIS
CRASH AVOIDANCE								
Anti-Lock Brake System, 4-Wheel (ABS)	Std.	Std.	Std.	Std.	Std.	Std.	Std.	Std.
Brake/Transmission Shift Interlock (with automatic transmission)	Std.	Std.	Std.	Std.	Std.	Std.	Std.	Std.
Brakes:								
— Front Disc/Rear Drum	Std.—2WD	Std.	Std.	Std.	Std.	Std.	Std.	Std. ¹
— Front Disc/Rear Disc	Std.—4x4	Std.—C3500 HD	—	—	—	—	—	Std. ¹
— Audible Wear Indicators	Std.	Std.	Std.	Std.	Std.	Std.	Std.	Std.
Limited Slip Differential	Opt.	Opt.	— ²	Opt.	Opt.	Opt.	Opt.	—
Maintenance-Free Battery	Std.	Std.	Std.	Std.	Std.	Std.	Std.	Std.
Tires with Built-In Wear Indicators	Std.	Std.	Std.	Std.	Std.	Std.	Std.	Std.
Daytime Running Lamps (DRL)	Std.	Std.	Std.	Std.	Std.	Std.	Std.	—
Automatic Exterior Lamp Control	Std.	—	Std.	—	—	—	—	—
Door Warning Lights or Reflectors	—	Std.	Std.	Std.	—	—	—	—
Foglamps (factory)	Opt. ¹	—	—	—	—	—	—	—
Halogen Headlamps, Sealed-Beam	—	Std. ¹	—	Std. ¹	Std. ¹	Std. ¹	Std.	Std.
Halogen Headlamps, Composite	Std.	Opt. ¹	Std.	Std. ¹	Opt. ¹	Opt. ¹	Opt. ¹	—
Outside Rearview Mirrors								
— Dual Fold-Away	Std.	Std.	Std.	Std.	Std.	Std.	Std.	—
— Dual Power Remote	Opt.	Opt. ¹	Std.	—	—	—	—	—
— Dual Power Remote, Heated	—	—	—	—	Opt. ¹	Opt.	—	—
Rear-Window Defogger	—	Opt. ¹	Opt.	Opt. ³	—	—	—	—
Rear-Window Wiper/Washer	—	—	Std.	Std.	—	—	—	—
Side-Window Defoggers (front)	Std.	Std.	Std.	Std.	Std.	Std.	Std.	—
OCCUPANT PROTECTION								
Lap Shoulder Safety Belt, Rear Outboard	—	Std. ¹	—	—	—	Std.	—	—
Adjustable Upper Safety Belt Anchors (front outboard)	—	Std.	Std.	Std.	Std.	Std.	Std.	—
Air Bag, Next Generation:								
— Driver	Std.	Std. ⁴	Std.	Std. ⁵	Std.	Std.	—	—
— Passenger (RH front)	Std.	Std. ⁴	Std.	Std. ⁵	Std. ^{6,7}	Std. ⁷	—	—
— Front-Passenger Air Bag Deactivation Switch*	Std.	Std. ¹	—	—	—	—	—	—
Child Comfort Guides (at rear outboard safety belts)	—	Std. ¹	—	—	—	Std.	—	—
Safety-Belt Cinch Capability for Child Safety Seats	Std.	Std.	Std.	Std.	Std.	Std.	—	—
Child Security Door Locks (rear doors)	—	—	Std.	Std.	Std.	Std.	—	—
Self-Aligning Steering Wheel	—	Std. ⁸	—	—	—	—	Std.	Std.
Steel Side Door Beams	Std.	Std.	Std.	Std.	Std.	Std.	—	—
SECURITY								
Laser-Etched VIN Plate	Std.	Std.	Std.	Std.	Std.	Std.	Std.	Std.
Marked Body Parts	Std.	Std.	Std.	Std.	Std.	Std.	Std.	—
Passlock® Vehicle Theft- Deterrent System	Std.	Std.	—	Std.	Std.	Std.	Std.	—
Remote Hood Release	Std.	Std.	Std.	Std.	Std.	Std.	Std.	—
Remote Keyless Entry	Opt. ¹	Opt.	Opt.	Opt.	—	Opt. ¹	—	—
Single Two-Sided Key Locking System	Std.	Std.	Std.	Std.	Std.	Std.	Std.	Std.

¹ Select models. Some features may be available only with, or be included only with certain available series, models, trim levels, Preferred Equipment Groups or additional options. See your Chevy Truck dealer for availability and more information. ² Optional (RPO NW9) Traction Control available. ³ Available with optional rear Dutch doors. ⁴ Except with GVWRs at or above 8,600 lbs. ⁵ Next Generation driver and front-passenger air bags will be available in Astro Cargo Van interim 1998 model year. ⁶ Next Generation front-passenger air bag is standard except when RH front-passenger seat is deleted or when air bag delete option AJ3 is specified on models with GVWRs at 8,600 lbs. or above. ⁷ The Next Generation front-passenger air bag will be available in Chevy Van and Chevy Express interim 1998 model year. ⁸ Models with GVWRs at or above 8,600 lbs. only. *See appropriate owner's manuals for important safety information.

COMMERCIAL BUYER'S GUIDE.

1998 CHEVY TRUCK MODEL SELECTOR

NOTE: The chart below compares the passenger capacity, cargo-hauling and trailer-towing capability, and available power for Chevy Truck commercial model lines. Your local Chevy dealer will be pleased to answer any additional questions you may have and can also provide more detailed brochures and information about any Chevy truck. Or, if you wish, call our toll-free number (1-800-962-2868) to request 1998 product brochures for the trucks of your choice.

PICKUPS & CHASSIS-CABS

BODY STYLE	DRIVE TYPE	WHEELBASE (IN.)	ANTI-LOCK BRAKES (ABS)	BOX LENGTH (FT.)	PAYLOAD, BASE (LBS., 2WD/4x4) ¹	GVWR RANGE (LBS.) ²	MAX. TOWING CAP. (LBS., 2WD/4x4) ³	SEATING (STD./OPT.)
S-10 PICKUP								
Regular-Cab Short-Box ⁴	2WD/4x4	108.3	4-wheel	6.1	1212/1103	4200-5150	5500/5500	3/2
Regular-Cab Long-Box	2WD/4x4	117.9	4-wheel	7.4	1533/1531	4600-5150	5500/5500	3/2
Extended-Cab Short-Box ⁴	2WD/4x4	122.9	4-wheel	6.1	1158/900	4400-5150	5500/5500	5/4
C/K PICKUP								
Regular-Cab Sportside	2WD/4x4	117.5	4-wheel	6.5	2249/1817	6100	7000/7000	3/2
Extended-Cab Sportside	2WD/4x4	141.5	4-wheel	6.5	2068/1663	6200-6600	7000/7000	6/5
Regular-Cab Short-Box	2WD/4x4	117.5	4-wheel	6.5	2269/1828	6100	7000/7000	3/2
Regular-Cab Long-Box	2WD/4x4	131.5	4-wheel	8	2110/1679	6100-10,000 ⁵	10,000/10,000	3/2
Extended-Cab Short-Box	2WD/4x4	141.5	4-wheel	6.5	2079/1711	6200-8600	8500/8000	6/5
Extended-Cab Long-Box	2WD/4x4	155.5	4-wheel	8	1840/1419	6200-10,000	10,000/10,000	6/5
Crew-Cab Long-Box	2WD/4x4	168.5	4-wheel	8	3525/3373	9000-10,000 ⁵	10,000/10,000	6/5
C/K CHASSIS-CAB								
Regular-Cab Chassis-Cab								
C/K2500 (regular frame)	2WD/4x4	131.5	4-wheel	NA	4693/3969	8600	10,000	3/--
C/K3500 (regular frame)	2WD/4x4	131.5	4-wheel	NA	4544/4373	9000-10,000	10,000	3/--
C/K3500 (straight frame)	2WD/4x4	135.5, 159.5	4-wheel	NA	5140/4741	10,000-12,000	10,000	3/--
C3500 HD (straight frame)	2WD	135.5, 159.5, 183.5	4-wheel	NA	9164/--	15,000	10,000	3/--
Crew-Cab Chassis-Cab								
C/K3500 (regular frame)	2WD/4x4	168.5	4-wheel	NA	3525/3373	9000-10,000	10,000	6/5

VANS

BODY STYLE	DRIVE TYPE	WHEELBASE (IN.)	ANTI-LOCK BRAKES (ABS)	MAX. CARGO CAP. (CU. FT.)	PAYLOAD BASE (LBS.) ¹	GVWR RANGE (LBS.) ²	MAX. TOWING CAP. (LBS.) ³	SEATING (STD./OPT.)
CHEVY VENTURE CARGO VAN								
Cargo Van	FWD	120.0	4-wheel	155.9	1669	5357	3500	2/--
ASTRO CARGO VAN								
Cargo Van	RWD/AWD	111.2	4-wheel	170.4	1713/1709	5600-5850	5500/5000	2/--
CHEVY VAN								
Regular	RWD	135.0	4-wheel	267.3	3809	8600-9500	10,000	2/--
Extended	RWD	155.0	4-wheel	316.8	4007	8600-9500	10,000	2/--
CHEVY EXPRESS								
Regular	RWD	135.0	4-wheel	267.3	3352	8600-9500	10,000	12/8
Extended	RWD	155.0	4-wheel	316.8	3602	8600-9500	10,000	12/15

G-CUTAWAY & FORWARD CONTROL P-CHASSIS

BODY STYLE	DRIVE TYPE	WHEELBASE (IN.)	ANTI-LOCK BRAKES (ABS)	MAX. CARGO CAP. (CU. FT.)	PAYLOAD BASE (LBS.) ¹	GVWR RANGE (LBS.) ²	MAX. TOWING CAP. (LBS.) ³	SEATING (STD./OPT.)
G-3500 Cutaway Van Chassis	2WD	139, 155, 179	4-wheel	NA	4915/4818	9200-10,500	NA ⁶	2/--
Forward Control P-Chassis	2WD	110 ⁷	4-wheel	NA	5093	8600	NA ⁶	NA
Forward Control P-Chassis	2WD	125, 133, 157, 178	4-wheel	NA	5798/5786	9400-14,100 ⁸	NA ⁶	NA

NA — Not available. ¹ Payload includes passengers, equipment and cargo. ² GVWR (Gross Vehicle Weight Rating) includes vehicle, passengers, equipment and cargo. ³ Maximum gross trailer weight when vehicle is properly equipped with available options. ⁴ May upgrade to optional Sportside Box. See your dealer for availability and restrictions. ⁵ 10,000-lb. GVWR requires optional dual rear wheels. ⁶ See the Gross Combination Weight Ratings chart in this brochure or your Chevrolet dealer to calculate towing capacity with the body and equipment of your choice installed. ⁷ 125" wheelbase available. ⁸ 14,500-lb. GVWR with optional School Bus Chassis Equipment or Motor Home Cutaway Chassis.

A WORD ABOUT TOWING: Maximum gross trailer weight for light-duty Chevy trucks includes trailer, passengers, equipment and cargo.

ENGINE AVAILABILITY GUIDE.

GASOLINE ENGINE AVAILABILITY — GVWRs UNDER 8600 LBS.

ENGINE AVAILABILITY	VORTEC 2200 I4 SFI ¹	3400 V6 SFI ¹	VORTEC 4300 V6 SFI ¹	VORTEC 4300 V6 SFI ¹	VORTEC 5000 V8 SFI ¹	VORTEC 5700 V8 SFI ¹
RPO	LN2	LA1	LF6	L35	L30	L31
S-10 Pickup (2WD)	S	-	O	O	-	-
S-10 Pickup (4x4)	-	-	S	O	-	-
C/K Pickup	-	-	-	S ²	O ³	O
Chevy Venture Cargo Van	-	S	-	-	-	-
Astro Cargo Van	-	-	-	S	-	-
Chevy Van	-	-	-	S	O	O
Chevy Express	-	-	-	S	O	O

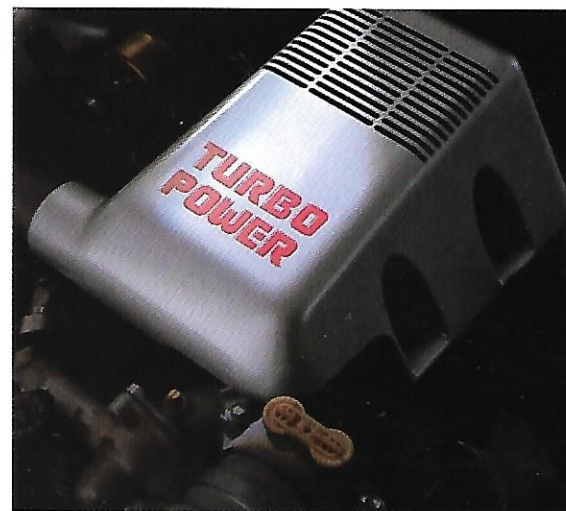
GASOLINE ENGINE AVAILABILITY — GVWRs AT 8600 LBS. AND ABOVE

ENGINE AVAILABILITY	VORTEC 4300 V6 SFI ¹	VORTEC 5700 V8 HD ⁴ SFI ¹	VORTEC 7400 V8 SFI ¹
RPO	L35	L31	L29
C/K2500 Pickup with C6P ⁵	-	S	O
C/K3500 Pickup	-	S	O
C/K Crew-Cab	-	S	O
C/K Chassis-Cab	-	S	O
C3500 HD Chassis-Cab	-	-	S
Chevy Van — G2500 and G3500	S ⁶	O	O
Chevy Express — G2500 and G3500	-	S	O ¹
G3500 Cutaway Van	-	S	O
Forward Control P-Chassis	S	O	-

DIESEL ENGINE AVAILABILITY

ENGINE AVAILABILITY	GVWRs UNDER 8600 LBS.		GVWRs AT 8600 LBS. AND ABOVE ²	
	6.5L TURBO-DIESEL V8	6.5L TURBO-DIESEL V8 HD ⁶	6.5L DIESEL V8 HD ³	
RPO	L56	L65	L57	
C/K Pickup	O	O	-	
C/K Crew-Cab	-	O	-	
C/K Chassis-Cab	-	O	-	
C3500 HD Chassis-Cab	-	O	-	
Chevy Van with C6P ⁵	-	O	-	
Chevy Express	-	O	-	
G-Cutaway Van	-	O	-	
Forward Control P-Chassis	-	-	O	

S — Standard. O — Optional. ¹ Sequential Fuel Injection. ² Not available with C/K2500 models. ³ Standard on K1500 Extended-Cab Long-Box and C/K2500 models. ⁴ Heavy-Duty Emissions. ⁵ Optional Heavy-Duty Chassis Equipment Package. ⁶ G2500 Series with 8,600-lb. GVWR only.



AVAILABLE TURBO-DIESEL POWER.

Many C/K Pickup, Chevy Express and Chevy Van models offer an optional 6.5 Liter Turbo-Diesel V8. On C/K Pickup, the diesel delivers newly enhanced performance for 1998.



ALTERNATIVE FUEL VEHICLES.

Chevrolet offers the benefits of alternative fuel technology in select, specifically equipped full-size commercial pickups and vans. The S-10 Electric Pickup is also available for light-duty service. Please call the CSV Express Line at 1-800-759-5550 for more information about the alternative fuel capabilities of these Chevy Truck models.

TRAILERING CAUTIONS.

NOTE: Please read the Trailing Cautions safety information below before trailering with your new truck.

NOTE: The safety steps described here are by no means the only precautions to be taken when trailering. See the owner's manual for the Chevy truck of your choice for additional guidelines and trailering tips.

TRAILERING CAUTION. If you don't use the correct equipment and drive properly, you can lose control of your vehicle when you pull a trailer. For example, if the trailer is too heavy, your vehicle brakes may be less effective. You and your passengers could be seriously injured. Pull a trailer only after you have taken the following steps.

TRAILER BRAKES. If your trailer weighs more than 1,000 lbs. loaded, then it must have its own adequate brakes. Be sure to read and follow the instructions for the trailer brake controller so that it is installed, adjusted and maintained properly.

■ Don't tap into your vehicle's brake system if the trailer's brake system will use more than 0.02 cu. in. of fluid from your vehicle's master cylinder. If it does, neither braking system will work well. You could even lose your vehicle brakes.

■ The trailer brake parts must be able to take 3,000 psi of pressure. If not, the trailer brake system must not be used with your vehicle. If everything checks out thus far, have a qualified individual make the brake fluid tap at the master cylinder port that sends fluid to the rear brakes. Don't use copper tubing, because it will bend and ultimately break. Use only steel brake tubing.

HITCHES. It's important to have the correct hitch equipment. Crosswinds, large trucks going by and rough roads are just a few reasons why you'll need the right hitch. Here are some rules to follow:

■ If you'll be towing a trailer that, when loaded, will weigh more than 3,500 lbs. with S-10 Pickup* and Astro Cargo Van models, 4,000 lbs. with Chevy Van/Chevy Express models, or 5,000 lbs. with C/K Pickup/Chassis-Cab models, be sure to use a frame-mounted, weight-distributing hitch and sway control of the proper size. This equipment is very important for proper vehicle loading and good handling when you're driving.

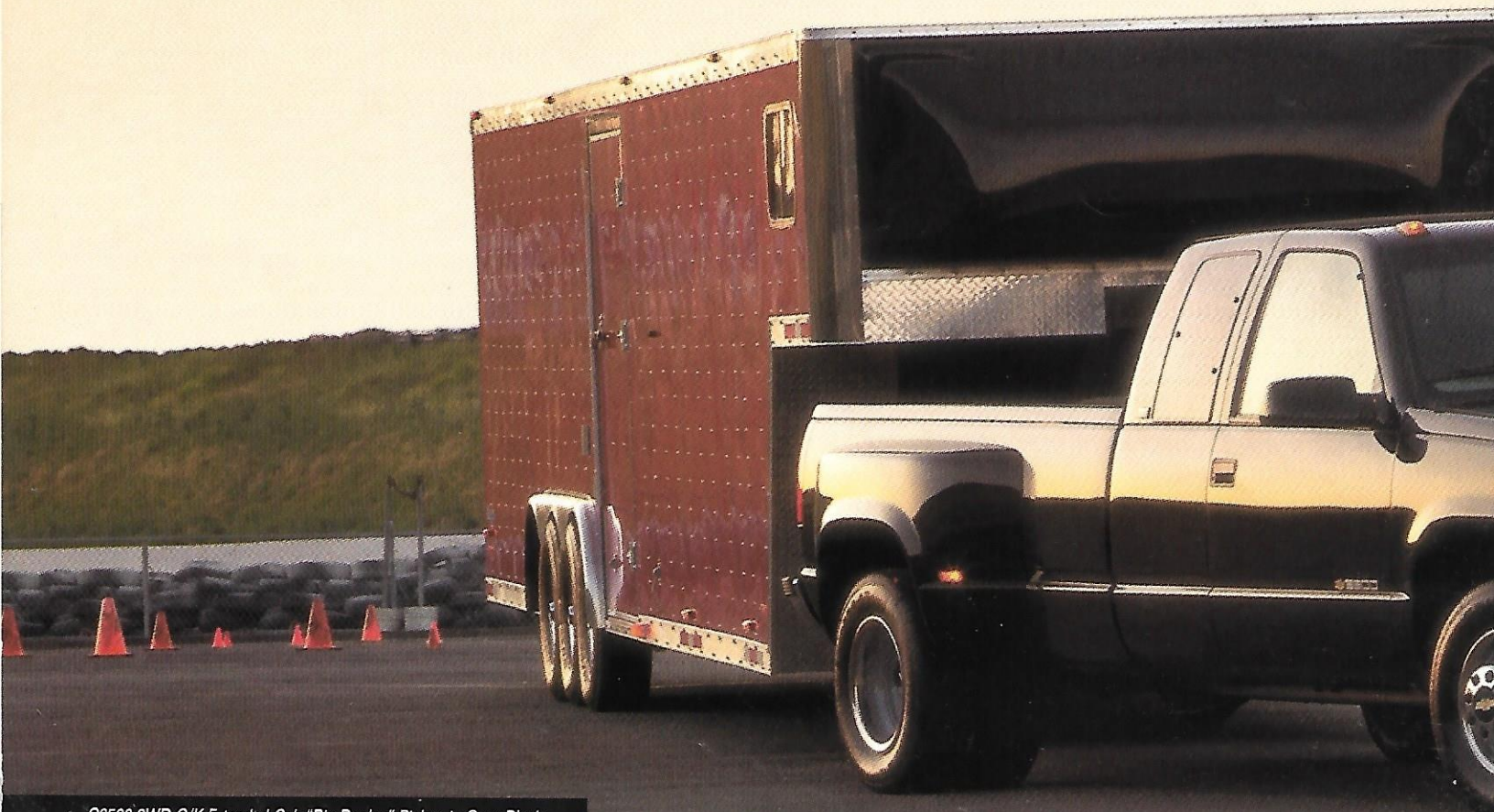
FIFTH-WHEELING. C/K Pickup and Chassis-Cab models can be equipped with a fifth-wheel or gooseneck trailer hitch.

■ Follow the hitch manufacturer's directions for installation, but note that the hitch must be attached to the truck frame. Do not use the pickup bed for additional support. For proper kingpin tongue load distribution and control of the trailer, the hitch must be mounted so the kingpin load is placed ahead of the rear axle centerline.

■ Fifth-wheel trailer kingpin loads are higher than conventional trailer tongue loads, so pay careful attention to the truck's payload capacity and rear-axle weight ratings.

■ Your Chevy Truck dealer can help you calculate the maximum allowable payload and GVWR required for your fifth-wheel trailering application. The weight of any additional equipment and all passengers other than the driver must be subtracted from the payload weight to determine the maximum kingpin load available.

*Maximum trailer weight rating may be less based upon powertrain combinations for these vehicles. See your dealer for details.



C3500 2WD C/K Extended-Cab "Big Dooley" Pickup in Onyx Black.

GCWR SELECTOR.

GCWR SELECTOR FOR TRAILERING APPLICATIONS

You can use the GCWR (Gross Combination Weight Rating) Selector below to determine the engine and rear axle ratio required to tow a specific trailer with your new Chevy truck. The chart shows the maximum allowable GCWR based on all the available truck engines and rear axle ratios with automatic or manual transmissions. The GCWR includes the total loaded weight of both the truck and the trailer. Any available engine may be used for trailering if the GCWR shown is not exceeded.

GROSS COMBINATION WEIGHT RATINGS FOR TRAILERING — MANUAL TRANSMISSION

GCWR (LBS.)	5000	5500	6500	7000	7500	8000	9000	10,000	11,000	12,000	13,500	15,000	17,000	19,000
ENGINE	REAR AXLE RATIO													
Vortec 2200 L4	3.73	4.10												
Vortec 4300 V6			3.08 ¹	3.42 ¹	3.73 ¹	4.10	4.56							
Vortec 5000 V8				3.08		3.42	3.73							
Vortec 5700 V8								3.08	3.42	3.73	4.10	4.56		
6.5L Turbo-Diesel V8										3.08	3.42	3.73	4.10	4.63
												5.13		
Vortec 7400 V8											3.42	3.73	4.10	4.56
														4.63
														5.13

¹ GCWR increased by 1,000 lbs. on all S-10 models. **NOTE:** To attain GCWRs on C/K models with 3.08 or 3.42 rear axle ratio, an RPO KC4 oil cooler is required.

GROSS COMBINATION WEIGHT RATINGS FOR TRAILERING — AUTOMATIC TRANSMISSION

GCWR (LBS.)	6000	6500	8000	8500	9000	9500	10,000	10,500	11,000	11,500	12,000	13,000	13,500	14,500	15,000	16,000	17,000	19,000	
ENGINE	REAR AXLE RATIO																		
Vortec 2200 L4		4.10																	
3400 V6	3.29		3.29 ¹																
Vortec 4300 V6				3.08	3.23	3.42	3.73 ²	4.10	4.56										
Vortec 5000 V8					3.08		3.42		3.73										
Vortec 5700 V8						3.08		3.42		3.73		4.10		4.56					
6.5L Turbo-Diesel V8							3.08		3.42	3.73		4.10		4.63		4.56	5.13		
											3.42				4.63				
Vortec 7400 V8												3.42			3.73		4.10	4.56	
																		4.63	
																		5.13	

¹ With optional (RPO V92) trailering provisions. ² GCWR reduced by 500 lbs. for all S-10 Pickup models; reduced by 1,000 lbs. for S-10 Pickup 4x4 models with ZR2 Wide-Stance Sport Performance Suspension Package.

NOTE: To attain GCWR on C/K models with 3.08 or 3.42 rear axle ratio, an RPO KC4 oil cooler is required.



PICKUP TRAILERING DATA.

C/K PICKUP BALL HITCH TRAILERING — MANUAL TRANSMISSION

ENGINE TRANSMISSION	VORTEC 4300 V6 MANUAL			VORTEC 5000 V8 MANUAL			VORTEC 5700 V8 MANUAL			VORTEC 7400 V8 MANUAL			6.5 LITER TURBO-DIESEL V8 MANUAL		
	MAX. TRAILER WEIGHT ¹ (LBS.)	MAX. TONGUE LOAD (LBS.)	REQUIRED AXLE RATIO	MAX. TRAILER WEIGHT ¹ (LBS.)	MAX. TONGUE LOAD (LBS.)	REQUIRED AXLE RATIO	MAX. TRAILER WEIGHT ¹ (LBS.)	MAX. TONGUE LOAD (LBS.)	REQUIRED AXLE RATIO	MAX. TRAILER WEIGHT ¹ (LBS.)	MAX. TONGUE LOAD (LBS.)	REQUIRED AXLE RATIO	MAX. TRAILER WEIGHT ¹ (LBS.)	MAX. TONGUE LOAD (LBS.)	REQUIRED AXLE RATIO
C1500 (2WD) Reg.-Cab/Ext.-Cab	2000 2500	200 250	3.08 3.42	2000 3000	200 300	3.08 3.42	5000 6000	600 750	3.08 3.42						
K1500 (4x4) Reg.-Cab/Ext.-Cab	2500	250	3.73	2500 3500	250 350	3.42 3.73	5500 6500	700 800	3.42 3.73						
C2500 (2WD) Reg.-Cab/Ext.-Cab				3000 4000	300 400	3.42 3.73	6000 7000 8000	750 850 950	3.42 3.73 4.10	9000 10,000	1000 1000	3.73 4.10	7500 8500	900 1000	3.73 4.10
K2500 (4x4) Reg.-Cab/Ext.-Cab							6000 7500	750 900	3.73 4.10	8500 10,000	1000 1000	3.73 4.10	6500 8000	800 950	3.73 4.10
C3500 (2WD) Reg.-Cab/Ext.-Cab							7500 9000	900 1000	4.10 4.56	10,000 10,000	1000 1000	4.10 4.56	8000	950	4.10
K3500 (4x4) Reg.-Cab/Ext.-Cab							7000	850	4.10	10,000 10,000	1000 1000	4.10 4.56	7500	900	4.10
C3500 (2WD) Crew-Cab							7000 8500	850 1000	4.10 4.56	10,000 10,000	1000 1000	4.10 4.56	8000	950	4.10
K3500 (4x4) Crew-Cab							8500 8000	800 950	4.10 4.56	10,000 10,000	1000 1000	4.10 4.56	7500	900	4.10

¹Maximum trailer weight is calculated assuming the driver and one passenger are in the tow vehicle, and it has all required trailering equipment. The weight of additional optional equipment, passengers and cargo in the tow vehicle must be subtracted from the maximum trailer weight.

C/K PICKUP BALL HITCH TRAILERING — AUTOMATIC TRANSMISSION

ENGINE TRANSMISSION	VORTEC 4300 V6 AUTOMATIC			VORTEC 5000 V8 AUTOMATIC			VORTEC 5700 V8 AUTOMATIC			VORTEC 7400 V8 AUTOMATIC			6.5 LITER TURBO-DIESEL V8 AUTOMATIC		
	MAX. TRAILER WEIGHT ¹ (LBS.)	MAX. TONGUE LOAD (LBS.)	REQUIRED AXLE RATIO	MAX. TRAILER WEIGHT ¹ (LBS.)	MAX. TONGUE LOAD (LBS.)	REQUIRED AXLE RATIO	MAX. TRAILER WEIGHT ¹ (LBS.)	MAX. TONGUE LOAD (LBS.)	REQUIRED AXLE RATIO	MAX. TRAILER WEIGHT ¹ (LBS.)	MAX. TONGUE LOAD (LBS.)	REQUIRED AXLE RATIO	MAX. TRAILER WEIGHT ¹ (LBS.)	MAX. TONGUE LOAD (LBS.)	REQUIRED AXLE RATIO
C1500 (2WD) Reg.-Cab/Ext.-Cab	4000 5000	500 600	3.08 3.42	4500 5500 6500	550 700 800	3.08 3.42 3.73	5000 6000 7000	600 750 850	3.08 3.42 3.73						
K1500 (4x4) Reg.-Cab/Ext.-Cab	5000	600	3.73	5000 6000	600 750	3.42 3.73	5500 6500	700 800	3.42 3.73				6000 7000	750 850	3.42 3.73
C2500 (2WD) Reg.-Cab/Ext.-Cab				5500 6500	700 800	3.42 3.73	6000 7000 8000	750 850 950	3.42 3.73 4.10	9000 10,000	1000 1000	3.73 4.10	6500 7500 8500	800 900 1000	3.42 3.73 4.10
K2500 (4x4) Reg.-Cab/Ext.-Cab							6000 7500	750 900	3.73 4.10	8500 10,000	1000 1000	3.73 4.10	6500 8000	800 950	3.73 4.10
C3500 (2WD) Reg.-Cab/Ext.-Cab							7500 9000	900 1000	4.10 4.56	10,000 10,000	1000 1000	4.10 4.56	8000	950	4.10
K3500 (4x4) Reg.-Cab/Ext.-Cab							7000	850	4.10	10,000 10,000	1000 1000	4.10 4.56	7500	900	4.10
C3500 (2WD) Crew-Cab							7000 8500	850 1000	4.10 4.56	10,000 10,000	1000 1000	4.10 4.56	8000	950	4.10
K3500 (4x4) Crew-Cab							6500 8000	800 950	4.10 4.56	10,000 10,000	1000 1000	4.10 4.56	7500	900	4.10

¹Maximum trailer weight is calculated assuming the driver and one passenger are in the tow vehicle, and it has all required trailering equipment. The weight of additional optional equipment, passengers and cargo in the tow vehicle must be subtracted from the maximum trailer weight.

NOTE: The weight-carrying hitch limit for C/K Pickup models is a 5,000-lb. trailer with 500-lb. tongue weight. A weight-distributing hitch is required with trailer weights over 5,000 lbs. Your vehicle may require additional special equipment to tow the maximum trailer weights listed here.

BALL HITCH TRAILERING NOTE. When towing with a weight-carrying trailer hitch, do not exceed these limits: 5,000-lb. maximum trailer weight with 500-lb. maximum tongue load. The maximum trailer rating may be less based upon powertrain combinations. ■ A transmission oil cooler is standard equipment on all C/K Pickups equipped with an automatic transmission. An additional air-to-oil cooler (RPO KNP) is standard on models with automatic transmission and GVWR at or above 8,600 lbs. and is available on all other models. ■ For trailer ratings above 2,000 lbs., an engine oil cooler (RPO KC4) is required on C/K Pickup models with a Vortec gasoline engine and 3.08 or 3.42 axle ratio. The engine oil cooler is standard on all other models. ■ For trailer ratings above 5,000 lbs., optional heavy-duty or gas shock absorbers (RPO F51 or FG5) are required on C1500 models, and optional heavy-duty shock absorbers (RPO F51) or Off-Road Chassis Package (RPO Z71) is required on K1500 models. ■ An 8-lead trailer wiring harness is standard on all C/K Pickup models. ■ An optional (RPO Z92) Heavy-Duty Trailering Equipment Package is available and includes a weight-distributing hitch platform, engine oil cooler (when not already included) and heavy-duty shock absorbers (where required).

PICKUP TRAILERING DATA.

C/K PICKUP FIFTH-WHEEL TRAILERING — MANUAL AND AUTOMATIC TRANSMISSION

ENGINE TRANSMISSION	VORTEC 5000 V8 AUTOMATIC ¹			VORTEC 5700 V8 MANUAL OR AUTOMATIC			VORTEC 7400 V8 MANUAL OR AUTOMATIC			6.5 LITER TURBO-DIESEL V8 MANUAL OR AUTOMATIC		
	MAX. TRAILER WEIGHT ² (LBS.)	MAX. KINGPIN LOAD (LBS.)	REQUIRED AXLE RATIO	MAX. TRAILER WEIGHT ² (LBS.)	MAX. KINGPIN LOAD (LBS.)	REQUIRED AXLE RATIO	MAX. TRAILER WEIGHT ² (LBS.)	MAX. KINGPIN LOAD (LBS.)	REQUIRED AXLE RATIO	MAX. TRAILER WEIGHT ² (LBS.)	MAX. KINGPIN LOAD (LBS.)	REQUIRED AXLE RATIO
C1500 (2WD) Reg.-Cab/Ext.-Cab	5500 6500	1200 1200	3.42 3.73	6000 7000	1200 1200	3.42 3.73						
K1500 (4x4) Reg.-Cab/Ext.-Cab	5000 6000	1000 1000	3.42 3.73	5500 6500	1000 1000	3.42 3.73						
C2500 (2WD) Reg.-Cab/Ext.-Cab	5500 6500	2000 2000	3.42 3.73	6000 7000	2000 2000	3.42 3.73				6500 7500	1600 1600	3.42 3.73
			8000 ³	8000 ³	3000 ³	4.10	9000 ³	2500 ³	3.73	8500 ³	2500 ³	4.10
K2500 (4x4) Reg.-Cab/Ext.-Cab				6000 ³ 7500 ³	2500 ³ 2500 ³	3.73 4.10	8500 10,500	2000 2000	3.73 4.10	6500 ³ 8000 ³	2000 ³ 2000 ³	3.73 4.10
C3500 (2WD) Reg.-Cab/Ext.-Cab				7500 9000	3000 3000	4.10 4.56	10,500 12,500	3000 3000	4.10 4.56	8000	3000	4.10
K3500 (4x4) Reg.-Cab/Ext.-Cab				7000	3000	4.10	10,000 12,000	3000 3000	4.10 4.56	7500	3000	4.10
C3500 (2WD) Crew-Cab				7000 8500	3000 3000	4.10 4.56	10,500 12,500	3000 3000	4.10 4.56	8000	3000	4.10
K3500 (4x4) Crew-Cab				6500 8000	3000 3000	4.10 4.56	10,000 12,000	3000 3000	4.10 4.56	7500	3000	4.10

¹ C/K1500 models with Vortec 5000 V8 are rated for fifth-wheel trailering with automatic transmission only. ² Maximum trailer weight is calculated assuming the driver and one passenger are in the tow vehicle, and it has all required trailering equipment. The weight of additional optional equipment, passengers and cargo in the tow vehicle must be subtracted from the maximum trailer weight. ³ With optional 8,600-lb. GVWR.

NOTE: The vehicle owner is responsible for obtaining the appropriate equipment required to safely fifth-wheel tow both the trailer and the load that will be towed. Ask your Chevrolet dealer for advice about the proper towing equipment for your new vehicle.

FIFTH-WHEEL TRAILERING NOTE: Kingpin weight cannot exceed available payload. Subtract vehicle weight plus passengers and cargo from the GVWR to determine available payload. ■ C/K1500 model ratings may be limited by insufficient payload for kingpin weight. ■ A transmission oil cooler is standard on all C/K models equipped with an automatic transmission. ■ An air-to-oil cooler (RPO KNP) is standard on models with GVWRs at or above 8,600 lbs. and is available on all other models. ■ An engine oil cooler (RPO KC4) is required on models with gas engines and a 3.42 axle ratio. The engine oil cooler is standard on all other models.

S-10 PICKUP TRAILERING

ENGINE TRANSMISSION	VORTEC 2200 L4 MANUAL			VORTEC 2200 L4 AUTOMATIC			VORTEC 4300 V6 MANUAL			VORTEC 4300 V6 AUTOMATIC		
	MAX. TRAILER WEIGHT ¹ (LBS.)	MAX. KINGPIN LOAD (LBS.)	REQUIRED AXLE RATIO	MAX. TRAILER WEIGHT ¹ (LBS.)	MAX. KINGPIN LOAD (LBS.)	REQUIRED AXLE RATIO	MAX. TRAILER WEIGHT ¹ (LBS.)	MAX. KINGPIN LOAD (LBS.)	REQUIRED AXLE RATIO	MAX. TRAILER WEIGHT ¹ (LBS.)	MAX. KINGPIN LOAD (LBS.)	REQUIRED AXLE RATIO
2WD	2000 2000	200 200	3.73 4.10	2000	200	4.10	3500	450	3.08	4500 5500	550 650	3.08 3.42
4x4 ²							3500 4000 4500	450 500 550	3.08 3.42 3.73	4500 5500 5500	550 650 650	3.08 3.42 3.73

¹ Maximum trailer weight is calculated assuming the driver and one passenger are in the tow vehicle and it has all required trailering equipment. The weight of additional optional equipment, passengers and cargo in the tow vehicle must be subtracted from the maximum trailer weight. Some models, when loaded with driver, passengers and maximum tongue load, may exceed the minimum GVW rating for that vehicle. ² The standard Insta-Trac 4x4 system for S-10 models does not include a Neutral position.

NOTE: The vehicle owner is responsible for obtaining the hitch ball, a hitch of the proper size, type and capacity, and other appropriate equipment required to safely tow both the trailer and the load that will be towed. Ask your Chevrolet dealer for advice about towing and the proper towing equipment for your new vehicle.

NOTE: Your vehicle may require additional special equipment to tow the maximum trailer weights listed here. The weight-carrying hitch limit for S-10 Pickup models is a 3,500-lb. trailer with 350-lb. tongue weight. A weight-distributing hitch is required with trailer weights over 3,500 lbs. Maximum trailer rating may be less, based upon powertrain combinations.

NOTE: Depending upon powertrain combination selected, S-10 Pickup models can tow up to a 3,500-lb. trailer (with a 350-lb. maximum tongue weight) without special equipment. ■ 2WD S-10 Pickup models with a 4,200-lb. GVWR are limited to a 2,000-lb. trailer rating. ■ All S-10 Pickups towing a trailer rated over 3,500 lbs. and/or with a tongue load exceeding 350 lbs. require optional trailering equipment, including an increased GVW Package and a weight-distributing hitch platform from an independent supplier. ■ Fifth-wheel trailering requires a Vortec 4300 V6 engine and increased GVW Package. Please see your dealer for additional information about fifth-wheel trailering with your S-10 Pickup.

VANS TRAILERING DATA.

CHEVY VENTURE CARGO VAN TRAILERING

ENGINE TRANSMISSION	3400 V6 SFI AUTOMATIC		
MODEL	MAX. TRAILER WEIGHT ¹ (LBS.)	MAX. TONGUE LOAD (LBS.)	REQUIRED AXLE RATIO
FWD Venture Cargo Van	2000 3500	200 350	3.29 3.29

NOTE: The weight-carrying hitch limit for Venture Cargo Van models is a 2,000-lb. trailer with 200 lb. tongue weight. Venture models towing a trailer rated over 2,000 lbs. require optional Trailing Special Equipment package (RPO V92), which includes a weight-distributing hitch platform and 8-lead trailer wiring harness.

ASTRO CARGO VAN TRAILERING

ENGINE TRANSMISSION	VORTEC 4300 V6 AUTOMATIC		
MODEL	MAX. TRAILER WEIGHT ¹ (LBS.)	MAX. TONGUE LOAD (LBS.)	REQUIRED AXLE RATIO
RWD Astro Cargo	4500 5000 5500	550 600 650	3.23 3.42 3.73
AWD Astro Cargo	4500 5000	550 600	3.42 3.73

NOTE: The weight-carrying hitch limit for Astro Cargo Van models is a 2,000-lb. trailer with 200 lb. tongue weight. Astro models towing a trailer rated over 2,000 lbs. require optional Trailing Special Equipment package (RPO Z82), which includes a weight-distributing hitch platform and 8-lead trailer wiring harness.

CHEVY VAN/CHEVY EXPRESS TRAILERING — GAS-POWERED

ENGINE TRANSMISSION	VORTEC 4300 V6 AUTOMATIC			VORTEC 5000 V8 AUTOMATIC			VORTEC 5700 V8 AUTOMATIC			VORTEC 7400 V8 AUTOMATIC		
	MAX. TRAILER WEIGHT ¹ (LBS.)	MAX. TONGUE LOAD (LBS.)	REQUIRED AXLE RATIO	MAX. TRAILER WEIGHT ¹ (LBS.)	MAX. TONGUE LOAD (LBS.)	REQUIRED AXLE RATIO	MAX. TRAILER WEIGHT ¹ (LBS.)	MAX. TONGUE LOAD (LBS.)	REQUIRED AXLE RATIO	MAX. TRAILER WEIGHT ¹ (LBS.)	MAX. TONGUE LOAD (LBS.)	REQUIRED AXLE RATIO
G1500	4000	500	3.42	5000	600	3.42	5500	700	3.42			
	4500	550	3.73				6500	800	3.73			
G2500	4000	500	3.42	5000	600	3.42	5500	700	3.42			
	4000	500	4.10				5500	700	3.73			
							7000	850	4.10			
G3500							5500	700	3.73	6500	800	3.42
							7000	850	4.10	8000	950	3.73
										10,000	1000	4.10

CHEVY VAN/CHEVY EXPRESS TRAILERING — DIESEL-POWERED

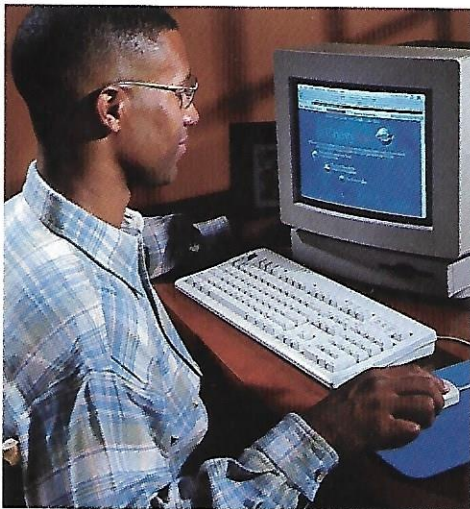
ENGINE TRANSMISSION	6.5 LITER TURBO-DIESEL V8 AUTOMATIC		
SERIES	MAX. TRAILER WEIGHT ¹ (LBS.)	MAX. TONGUE LOAD (LBS.)	REQUIRED AXLE RATIO
G2500	6500	800	3.73
	8000	950	4.10
G3500	6000	750	3.73
	7500	900	4.10

¹ Maximum trailer weight is calculated assuming the driver and one passenger are in the tow vehicle and it has all required trailering equipment. The weight of additional optional equipment, passengers and cargo in the tow vehicle must be subtracted from the maximum trailer weight.

NOTE: Chevy Van and Chevy Express models towing a trailer rated over 4,000 lbs. require optional Trailing Special Equipment package (RPO Z82), which includes a weight-distributing hitch platform and 8-lead trailer wiring harness.

TRAILERING NOTE: Your vehicle may require additional special equipment to tow the maximum trailer weights listed here. The vehicle owner is responsible for obtaining the hitch ball, a hitch of the proper size, type and capacity, and other appropriate equipment required to safely tow both the trailer and the load that will be towed. Ask your Chevrolet dealer for advice about towing and the proper towing equipment for your new vehicle. Please read the "Trailing Caution" before trailering with your new vehicle.

ADDITIONAL INFORMATION.



PLEASE CONTACT US ...

For any additional information on 1998 Chevrolet car or truck products, call 1-800-950-2438 or visit us at <http://www.chevrolet.com> on the Internet. Also, you're invited to call the Chevy Commercial Specialty Vehicles Department on the CSV Express Line (1-800-759-5550) with questions about Chevy commercial vehicles, or for the location of your nearest Commercial Specialty Vehicles dealer.

NEW VEHICLE LIMITED WARRANTY.

The GM 3-year/36,000-mile (whichever comes first) limited warranty covers repairs for all 1998 Chevrolet commercial vehicles including labor and parts, to correct any defects in material or workmanship occurring during the warranty period. The complete vehicle (including tires) will be covered for 3 years or 36,000 miles, whichever comes first. There is also emissions control system coverage, which varies by geographical region. See your Chevrolet dealer for terms of this limited warranty.

AN IMPORTANT NOTE ABOUT ALTERATIONS AND WARRANTIES.

Installations or alterations to the original equipment vehicle (or chassis) as distributed by General Motors are not covered by the General Motors New Vehicle Limited Warranty. The special body company, assembler, equipment installer or upfitter is solely responsible for warranties on the body or equipment and any alterations (or any effect of the alterations) to any of the parts, components, systems or assemblies installed by GM.

UPDATED SERVICE INFORMATION.

Chevrolet regularly sends its dealers useful service bulletins about Chevrolet products. Chevrolet monitors product performance in the field. We then prepare bulletins for servicing our products better. Now you can get these bulletins, too. Ask your dealer or, for ordering information, call toll free: 1-800-551-4123.

A WORD ABOUT THIS BROCHURE.

We have tried to make this brochure as comprehensive and factual as possible. We reserve the right, however, to make changes at any time, without notice, in prices, colors, materials, equipment, specifications, models and availability. Since some information may have been updated since the time of printing, please check with your Chevrolet dealer for complete details.

ASSEMBLY.

Chevrolet trucks are assembled by different operating units of General Motors, its subsidiaries or suppliers to GM worldwide. Chevrolet trucks incorporate thousands of components produced by different operating units of GM, its subsidiaries or suppliers to GM worldwide.

We sometimes find it necessary to produce Chevrolet trucks with different or differently sourced components than originally scheduled. All such components have been approved for use in Chevrolet trucks and will provide the quality of performance associated with the Chevrolet name. Since some options may be unavailable when your vehicle is assembled, we suggest that you verify that your vehicle includes the equipment you ordered or, if there are changes, that they are acceptable to you.

ENGINES.

Chevrolet trucks are equipped with engines produced by different operating units of GM, its subsidiaries or suppliers to GM worldwide.

CORROSION PROTECTION.

Chevrolet trucks are designed and built to resist corrosion. All body sheet-metal components are warranted against rust-through corrosion for 6 years/100,000 miles (whichever comes first). Application of additional rust-inhibiting materials is not required and none is recommended. See your Chevrolet dealer for terms of this limited warranty.

AN IMPORTANT NOTE ABOUT SUPPLIERS.

The safety and productivity of your completed vehicle require that the addition of a body, equipment and/or any other type of alteration be performed in accordance with all applicable Federal Motor Vehicle Safety Standards and in accordance with prudent engineering principles. Vehicle completion and/or alterations should be performed only by professional, reputable intermediate and final-stage manufacturers or vehicle alterers. Consumers are urged to inquire as to the facilities, trained personnel and professional group affiliations of the intermediate and/or final-stage manufacturer or vehicle alterer that may install a body or equipment on your Chevrolet chassis or perform any type of alteration to your vehicle. Make sure your supplier uses the proper equipment to the exact specifications required to make your Chevrolet perform as it was intended.

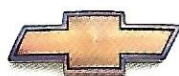
Chevrolet, the Chevrolet Emblem, General Motors, GM, the GM Emblem, S10, Astro, Chevy Van, Cheyenne, Silverado, ETR, Solar-Ray, Big Dooley, Step-Van, Passlock and Insta-Trac are registered trademarks of the General Motors Corporation. Chevy, Chevy Express, ZR2, Venture and Vortec are trademarks of the General Motors Corporation. "Scotchgard" is a registered trademark of 3M.

© 1997 General Motors Corp. All rights reserved.



Litho in USA

July 1997



CHEVY TRUCKS