

2020

Atlas



There's room for everyone.

Big families need a big SUV, and the Atlas is large enough to handle everything from the daily car pool to a weekend adventure. It comes with seven seats and a 3rd row kids will love to sit in. Not to mention enough technology and amenities to keep everyone happy.



Seven's company.

No matter how many kids you have, chances are you'll be driving a few extra more often than not. So we gave the Atlas enough room for seven people to travel in style, as well as cargo space for the things they bring along. Add in amenities galore to help keep your passengers entertained, and you have everything you need to go create a great day. Or seven.



Hands-free Easy Open liftgate

With the key in your pocket, kick your foot under the rear bumper of the Atlas to open the hatch. This available feature is ideal when your hands are full.

Panoramic sunroof

Running almost the length of all three rows, the available panoramic sunroof lets the outdoors in. Want that convertible feeling? Just open it up.

96.8 cubic feet of cargo space

With the 2nd and 3rd rows folded down, the Atlas has 96.8 cubic feet of cargo space. You may need more stuff just to take advantage of it.

Room for three child seats in the 2nd row*

Now all the kids can have their own room, thanks to the spacious and comfortable 2nd row.



Android Auto shown.



Image shown for illustration purposes only; actual feature may vary.



FEATURES

Dual-zone climate control
Reclining 2nd-row bench seats

AVAILABLE FEATURES

Heated 2nd-row seats
17 cupholders
Climatronic® 3-zone automatic climate control

Heated and ventilated front seats

It's not just all the legroom that makes the front seats so comfortable. On hot days, this available feature can circulate air throughout the seat to help cool you down. When it's cold, you can stay warm by choosing from three different heat settings.

2nd-row captain's chairs*

More like admiral's chairs. Available as an option, they're comfortable and offer more space for each individual passenger.

Easy 3rd-row access

Getting into the 3rd row is so easy, you can do it with one hand. Just fold the 2nd row forward with a pull and a push.

Plenty of 3rd-row legroom

When we say we have a lot of 3rd-row legroom, we're not kidding around. And there's room for arms and elbows too.



*2nd-row captain's chairs reduce total seating capacity to six.



The brains behind the brawn.

The Atlas is filled with features and tech designed to help its occupants connect, from App-Connect* to available features like an 8" glass touchscreen display and the VW Digital Cockpit. With our personalization feature you can also create up to four user profiles, enabling the Atlas to remember things like your radio stations and temperature, among others. If you have the available power driver's seat with memory, the Atlas can even memorize your favorite seat position.

Android Auto shown.
Image shown for illustration purposes only; actual feature may vary.

Volkswagen Digital Cockpit

The available display is a true breakthrough. Instead of the traditional instrument cluster, information from navigation directions to altitude can be displayed digitally in high resolution.

Fender® Premium Audio System

Forget the family sing-along. Enjoy your favorite artists with the available 480-watt Fender Premium Audio System.

8" touchscreen navigation

Besides looking great, the available sleek glass display helps make the map more prominent, while dynamic route guidance assists you with turn-by-turn information.

FEATURES

6.5" touchscreen sound system
USB port

AVAILABLE FEATURES

8" touchscreen sound system
1 additional front USB data port and
2 rear USB charging ports

*Always pay careful attention to the road, and do not drive while distracted. Not all features available on all operating systems. Standard text and data usage rates apply. App-Connect features require compatible device, operating system, and mobile apps. See mobile device and app providers for terms and privacy.

App-Connect*

App-Connect allows you to connect your compatible smartphone with Apple CarPlay®, Android Auto™, or MirrorLink® to access select apps on the touchscreen display. From streaming music to mobile apps, they can be accessed on the touchscreen.



Remote start**

On cold days, the available remote start feature can warm up the Atlas while you stay inside sipping your coffee (or tea). If the temperature gets too warm or too cold, it can turn on the heated or ventilated front seats.



Image shown for illustration purposes only; actual feature may vary.

Driver personalization†

The Atlas can store up to four driver profiles, remembering your personal preferences for a wide variety of different settings and systems.



Customizable views†

You can customize the available display to better suit your driving needs, so information about your Driver Assistance features or navigation is displayed more prominently.



Wide map navigation view†

You shouldn't get lost trying not to get lost. So the available wide map navigation view adjusts the size of the map, making it even bigger and more prominent.



Don't pass up a chance for greater peace of mind.

Driver Assistance features can help give you more confidence on your drive.



Image shown for illustration purposes only; actual feature may vary.

Park Distance Control with Maneuver Braking*

Available Park Distance Control has sensors that can help you back out of or drive into a parking spot. Audible signals and the optical parking system on the display indicate how much space you have behind and, on some vehicles, in front of the vehicle when parking. If you get too close to a detected object, the system beeps as a warning. Maneuver Braking (included with Park Distance Control) can apply emergency braking force automatically to help mitigate and in best case prevent collisions with detected stationary obstacles while you maneuver the vehicle in reverse gear.

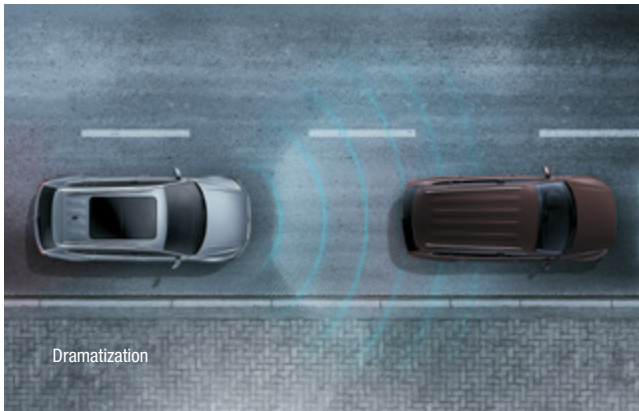
Front Assist*

The Forward Collision Warning (included in Front Assist) system can help monitor traffic and can alert you acoustically and visually to a potential rear-end collision with the vehicle moving ahead. If it senses that a collision is imminent, Autonomous Emergency Braking (included in Front Assist) can support the driver with increased brake pressure or, if the driver does not react at all, it can apply the brakes automatically. Pedestrian Monitoring (included in Front Assist) feature can warn of pedestrians crossing in front of the vehicle and, under certain circumstances, can brake automatically to help mitigate the outcome of a collision with a pedestrian if the driver doesn't respond to the warnings.

Park Assist*

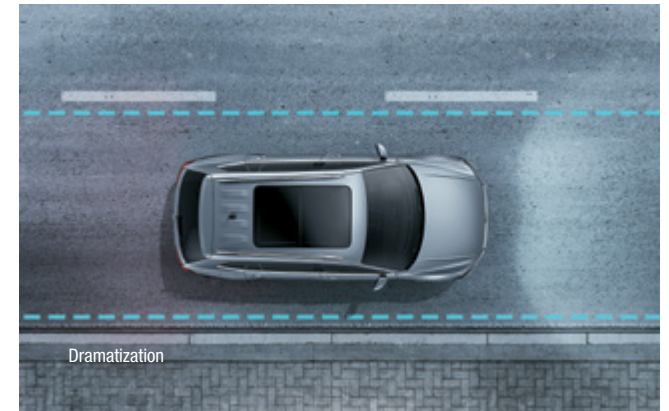
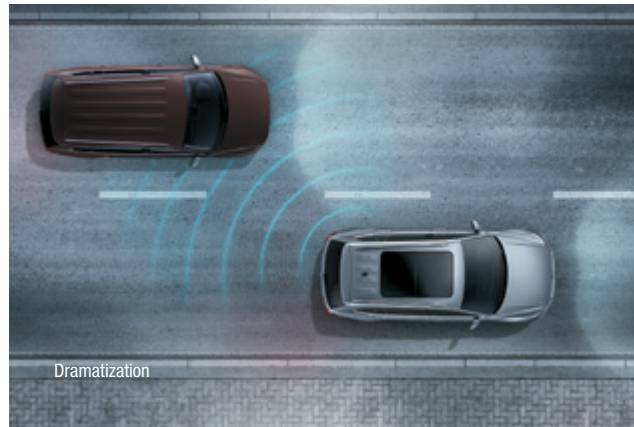
The available Parking Steering Assistant (Park Assist) can determine if a parking spot is big enough for your Volkswagen. Then it will help steer the vehicle into and out of the space, either parallel or perpendicular. You operate the accelerator, brake, and shifter; it does the rest.

*Driver Assistance features are not substitutes for attentive driving. See Owner's Manual for further details and important limitations.



Blind Spot Monitor*

The Blind Spot Monitor is a feature that can sense what you might miss. If you attempt to change lanes, Blind Spot Monitor can help alert you to other cars that may be in your blind spot. The Active Blind Spot Monitor (available when vehicle is equipped with Lane Assist) on select models can also counter-steer within the limits of Lane Assist to help keep you in your lane if you attempt to change lanes when a vehicle is in your blind spot.



Lane Assist*

When moving, the available Lane Keeping System (Lane Assist) can sense if you start to drift into another lane without using the turn signal. Within the limits of the system, Lane Assist can help keep you in the current lane when lane markings are detected.

Adaptive Cruise Control (ACC)*

Available Adaptive Cruise Control (ACC) helps the vehicle maintain a preset speed and distance from the car in front of you. When activated, if the car in front of you speeds up or slows down, the sensors can detect the change and your car follows suit up to the preset speed.

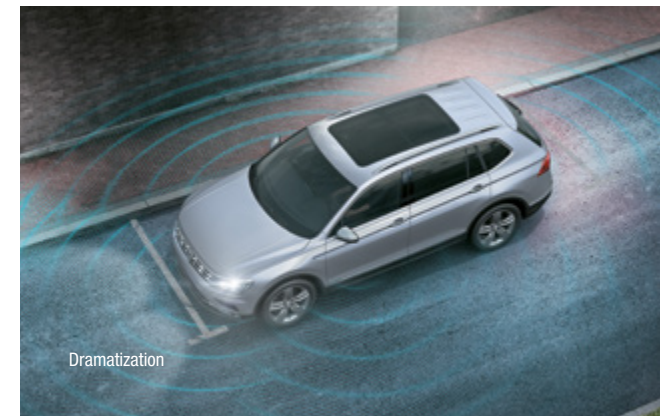


Rear Traffic Alert*

Rear Traffic Alert comes in handy when you're backing up. It has sensors that can alert you to detected vehicles crossing in your path when in reverse and can even help brake the vehicle if needed.

High Beam Control (Light Assist)*

Available High Beam Control (Light Assist) helps provide better visibility on dark roads by turning on your high beams at certain speeds. A camera mounted at the base of the rearview mirror turns your high beams on when conditions warrant it on dark or poorly lit roads. It then turns them off again if another car approaches or drives in front of you.



Area View*

The available Overhead View Camera (Area View) helps give you a better view of what is around your vehicle.

*Driver Assistance features are not substitutes for attentive driving. See Owner's Manual for further details and important limitations. Each image shown is a dramatization for illustration purposes only.

Family time flies.

Family plans this weekend? The (later availability) 3.6L V6 engine has more than enough power to take you pretty much anywhere without breaking a sweat.





4MOTION® all-wheel drive with Active Control

With the turn of a dial, this available feature lets you switch between four different all-wheel drive modes to the one that fits your current driving situation.



5,000-lb. towing capacity*

When properly equipped with a factory-installed towing hitch, the 3.6L V6 engine can tow up to 5,000 lbs. So your home away from home can get away from home.

FEATURES

2.0L TSI® turbocharged engine
8-speed automatic transmission with Tiptronic® and Sport mode
Start-Stop System

AVAILABLE FEATURES

3.6L V6 engine (later availability)





Introducing Carefree Coverage.

We believe being confident in your Volkswagen is everything. Now standard on most of our model year 2020 and 2021 vehicles, our suite of products and services is our commitment to you that Volkswagen is the smart choice. See all the benefits we have to offer.*

2
yrs.

Service

Scheduled Carefree Maintenance
2 yrs. or 20,000 miles

Scheduled Carefree Maintenance.

For advanced peace of mind, most model year 2020 and 2021 Volkswagen vehicles come standard with Scheduled Carefree Maintenance, which includes the first two years of manufacturer-recommended maintenance intervals (two years or 20,000 miles, whichever occurs first).*

3
yrs.

Help

Roadside Assistance
3 yrs. or 36,000 miles

Confidence you can count on.

Feel secure in knowing that VW Roadside Assistance is available 24 hours a day, 7 days a week.*

4
yrs.

Cover

New Vehicle Limited Warranty
4 yrs. or 50,000 miles

Coverage when you need it.

Ownership is easy with a 4-year or 50,000-mile (whichever occurs first) bumper-to-bumper limited warranty.*

5
yrs.

Access

Car-Net Remote Access

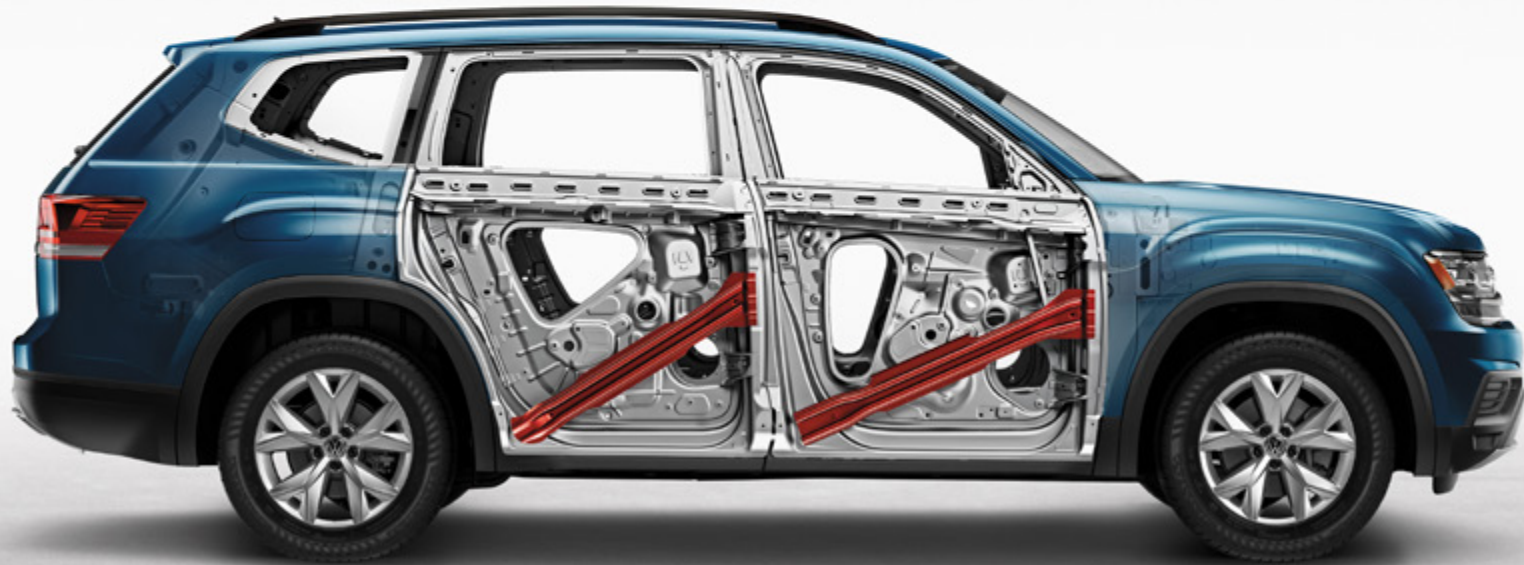
Convenience on command.

With a suite of standard features including remote commands[†], family guardian alerts[‡], monthly vehicle health reports[§], and parking info^{§§}, Volkswagen Car-Net[®] Remote Access provides mobile app features that can give you command of your car, conveniently in your pocket.*

*Available on most new MY20 and MY21 vehicles. For vehicle eligibility details, visit vw.com/coverage. VW's Carefree Maintenance Program provides 10,000- and 20,000-mile scheduled maintenance services or scheduled maintenance services for two years (whichever occurs first) as stated in the vehicle's maintenance booklet. Does not include tire rotations, or other services or parts not specified in the owner's literature. 3 years/36,000 miles (whichever occurs first) Roadside Assistance provided by a third party. 4 years/50,000 miles (whichever occurs first) New Vehicle Limited Warranty. See owner's literature or dealer for warranty, maintenance program, and roadside assistance details, exclusions, and limitations. Car-Net Remote Access services require cellular connectivity, GPS signal, and acceptance of Terms of Service (services not available on MY20 Passat). Not all services and features are available on all vehicles. Other Car-Net services require a trial or paid subscription. See additional important information at <http://www.vw.com/carnet>. [†]Standard text and data rates may apply. Always pay careful attention to the road, and do not drive while distracted. [‡]Standard text and data rates may apply. [§]Refer to your vehicle's warning and indicator lights for the most current diagnostic information. Always consult owner's literature for maintenance guidelines and do not solely rely on the outreach described here for service appointments or otherwise attend to your vehicle. ^{§§}Powered by Parkopedia. Requires parking facility participation. Volkswagen not responsible for accuracy of pricing & payment options, hours of operation, and features. See parkopedia.com for important information and details. Standard text and data rates may apply.

Helps you stay out of trouble.

Peace of mind comes in different forms on the Atlas with its multiple safety features.



Rear View Camera System

Benefit from the view of a wide lens. It can help you see obstacles when backing up, a feature so helpful you'll wonder how you ever managed without it.

Safety cage

Front and rear crumple zones help absorb crash energy, while a rigid safety cage helps distribute forces away from the driver and passengers.

Automatic Post-Collision Braking System*

Not every collision brings a car to stop. That's why our vehicles include the Automatic Post-Collision Braking System. It can also help slow the vehicle down after a collision, helping reduce the chance of any additional impacts.

Intelligent Crash Response System (ICRS)†

In the event of a collision that deploys the airbags,† the ICRS can turn off the fuel pump, unlock the doors, and activate the hazard lights. It helps react if you might not be able to.

Six stability-enhancing systems

From Electronic Brake-pressure Distribution (EBD), which helps maintain appropriate stopping power during a hard-braking situation, to Electronic Stability Control (ESC), which can adjust engine throttle and apply corrective forces to the wheels that need them most, your vehicle is equipped with a total of six stability-enhancing systems.

*The features discussed are designed to help mitigate the effects of certain collisions and are not a substitute for attentive driving. Please see Owner's Manual for further details and important limitations. †The Intelligent Crash Response System (ICRS) will only activate in a collision where the airbags deploy or safety belt pretensioners activate. Not all collisions cause airbags to deploy or safety belt pretensioners to activate. ††Airbags are supplemental restraints only and will not deploy under all crash circumstances. Always use safety belts and seat children only in the rear, using restraint systems appropriate for their size and age.

Atlas Specs

● Standard, no additional cost – Not available ○ Optional, additional cost ▲ Later Availability

V6 only available on V6 model WP Available with Wheel Pkg WP2 Available with Wheel Pkg 2

CP Available with Captain's Chairs Pkg PSP Available with Panoramic Sunroof Pkg 4MO Available with 4MOTION models

EXTERIOR	S	SE	SE TECH	SE TECH R-LINE	SEL	SEL R-LINE	SEL PREM
LED headlights with LED Daytime Running Lights (DRL)	●	●	●	●	●	●	●
LED taillights	–	–	–	–	●	●	●
Automatic headlights	●	●	●	●	●	●	●
Foglights with low-speed corner-illuminating feature	–	●	●	●	●	●	●
Power tilting/sliding panoramic sunroof	–	–	PSP	PSP	●	●	●
Side mirrors with memory feature	–	–	–	–	●	●	●
Heated side mirrors	●	●	●	●	●	●	●
Power-folding side mirrors	–	–	–	–	–	–	–
Rain-sensing windshield wipers	●	●	●	●	●	●	●
Silver roof rails	–	–	–	–	●	●	●
Remote opening and closing power liftgate with closing assist	–	–	●	–	–	–	–
Hands-free Easy Open liftgate	–	–	–	●	●	●	●
Trailer hitch, 5,000-lb. towing capacity ⁶⁰	V6/O	V6/O	V6/O	O	V6/●	●	●
Coming/Leaving Home feature	●	●	●	●	●	●	●
R-Line front bumper and badging	–	–	–	–	–	–	–
18" 5-spoke alloy wheels	●	●	–	–	–	–	–
20" triple 5-spoke alloy wheels	–	–	●	–	●	–	–
20" twin 5-spoke dark graphite alloy wheels	–	–	–	●	–	–	–
21" two-tone machined alloy wheels	–	–	–	–	–	–	●
21" two-tone machined alloy wheels	–	–	–	–	–	–	●

INTERIOR	S	SE	SE TECH	SE TECH R-LINE	SEL	SEL R-LINE	SEL PREM
Dual-zone climate control with air vents for the 1st, 2nd, and 3rd rows	●	–	–	–	–	–	–
Climatronic® 3-zone automatic climate control	–	●	●	●	●	●	●
Premium color Multifunction Display (MFD)	●	●	●	●	–	–	–
115V power outlet	–	–	–	–	●	●	●
Interior ambient lighting	–	–	–	–	–	–	●
Auto-dimming interior rearview mirror	–	–	●	●	●	●	●
Heated front seats	–	●	●	●	●	●	●
Heated 2nd row outboard seats	–	–	–	–	–	–	●
8-way power passenger seat	–	–	–	–	●	●	●
10-way power-adjustable driver's seat	–	●	●	●	●	●	●
Driver's seat with memory	–	–	–	–	●	●	●
Power-adjustable lumbar support for driver's seat	–	●	●	●	●	●	●
60/40-split folding 2nd row, 3rd-row easy entry, and 50/50-split folding 3rd row	●	●	●	●	●	●	●
Cloth seating surfaces	●	–	–	–	–	–	–
V-Tex leatherette seating surfaces	–	●	●	●	●	–	–
Leather seating surfaces for 1st and 2nd row	–	–	–	–	–	–	●
2nd-row captain's chairs with 3rd-row easy entry [†]	–	–	CP	CP	CP	CP	CP
Ventilated front seats	–	–	–	–	–	–	●

PERFORMANCE	S	SE	SE TECH	SE TECH R-LINE	SEL	SEL R-LINE	SEL PREM
2.0L TSI®, 16-valve, DOHC, in-line 4-cylinder turbocharged engine with intercooler and direct fuel injection; 235 hp, 258 lb-ft of torque (achieved with premium fuel)	●	●	●	–	●	–	–
3.6L, 24-valve, DOHC, narrow-angle V6 with FSI® direct fuel injection; 276 hp, 266 lb-ft of torque	○	○	●	●	○	●	●
4MOTION® all-wheel drive with Active Control	4MO	4MO	4MO	4MO	4MO	4MO	●
Electromechanical power steering with variable assistance	●	●	●	●	●	●	●
8-speed automatic transmission with Tiptronic® and Sport mode	●	●	●	●	●	●	●
Start-Stop System	●	●	●	●	●	●	●

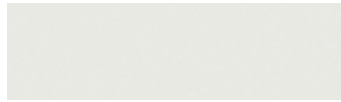
TECHNOLOGY & DRIVER ASSISTANCE	S	SE	SE TECH	SE TECH R-LINE	SEL	SEL R-LINE	SEL PREM
Volkswagen Digital Cockpit	–	–	–	–	●	●	●
Composition Color touchscreen sound system with 6.5" color display	●	–	–	–	–	–	–
Composition Media touchscreen sound system with 8" color display	–	●	●	●	–	–	–
Discover Media touchscreen navigation system with 8" color display	–	–	–	–	●	●	●
Fender® Premium Audio System	–	–	–	–	–	–	●
App-Connect*	●	●	●	●	●	●	●
Volkswagen Car-Net® Remote Access with 5-years standard**	●	●	●	●	●	●	●
Volkswagen Car-Net® Safe & Secure with paid subscription†	●	●	●	●	●	●	●
Volkswagen Car-Net® Hotspot with 1-month/1GB trial subscription†	●	●	●	●	●	●	●
Volkswagen Car-Net® Guide & Inform with 3-month SiriusXM® Traffic trial subscription and 3-month SiriusXM Travel Link® trial subscription‡	–	–	–	–	●	●	●
2 USB-C ports	●	●	●	●	●	●	●
3 front USB data ports and 2 rear USB charging ports	–	●	●	●	●	●	●
SiriusXM® All Access with 3-month trial subscription‡‡	–	●	●	●	●	●	●
Keyless access with push-button start [§]	–	–	●	●	●	●	●
Remote start [§]	–	–	●	●	●	●	●
Forward Collision Warning and Autonomous Emergency Braking (Front Assist) ^{§§}	●	●	●	●	●	●	●
Pedestrian Monitoring (included in Front Assist) ^{§§}	●	●	●	●	●	●	●
Blind Spot Monitor ^{§§}	●	●	●	●	●	●	●
Rear Traffic Alert ^{§§}	●	●	●	●	●	●	●
Adaptive Cruise Control (ACC) ^{§§}	–	–	●	●	●	●	●
Park Distance Control ^{§§}	–	–	–	●	●	●	●
Parking Steering Assistant (Park Assist) ^{§§}	–	–	–	–	–	–	●
High Beam Control (Light Assist) ^{§§}	–	–	–	–	–	–	●
Overhead View Camera (Area View) ^{§§}	–	–	–	–	–	–	●
Maneuver Braking (included in Park Distance Control) ^{§§}	–	–	–	●	●	●	●

SAFETY	S	SE	SE TECH	SE TECH R-LINE	SEL	SEL R-LINE	SEL PREM
Rear View Camera System	●	●	●	●	●	●	●
LATCH (Lower Anchors and Tethers for Children) child seat anchor points	●	●	●	●	●	●	●
Anti-lock Braking System (ABS), Electronic Brake-pressure Distribution (EBD), and Hydraulic Brake Assist (HBA)	●	●	●	●	●	●	●
Intelligent Crash Response System (ICRS) ⁹	●	●	●	●	●	●	●
Tire Pressure Monitoring System (TPMS)	●	●	●	●	●	●	●
Electronic Stability Control (ESC), Anti-Slip Regulation (ASR), Electronic Differential Lock (EDL), and Engine Brake Assist (EBA)	●	●	●	●	●	●	●

DIMENSIONS							
Wheelbase	117.3inches	Ground clearance	8.0 inches				
Length	198.3 inches	Cargo volume with 3rd row folded down	55.5 cu. ft.				
Width	78.3 inches	Cargo volume with 2nd and 3rd rows folded down	96.8 cu. ft.				
Height	70.0 inches						

Colors and Wheels

EXTERIOR COLORS



Pure White



Pacific Blue Metallic



Tourmaline Blue Metallic

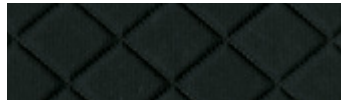


Platinum Gray Metallic



Deep Black Pearl

INTERIOR CLOTH



Titan Black

INTERIOR V-TEX LEATHERETTE



Titan Black



Shetland Gray

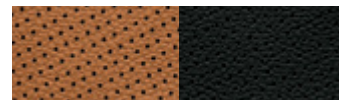
INTERIOR LEATHER



Titan Black Vienna Leather



Shetland Beige Vienna Leather

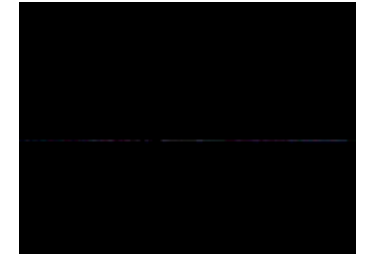


Golden Oak/Titan Black Vienna Leather

WHEELS



18" 5-spoke alloy



20" twin 5-spoke alloy



20" triple 5-spoke alloy



20" triple 5-spoke dark graphite alloy



21" two-tone machined alloy

Not all combinations of exterior paint and interior seating surfaces are available.

*Always pay careful attention to the road, and do not drive while distracted. Not all features available on all operating systems. Standard text and data usage rates apply. App-Connect features require compatible device, operating system, and mobile apps. See mobile device and app providers for terms and privacy. **Available on most MY20 and newer vehicles. Always pay careful attention to the road and do not drive while distracted. Certain services require trial or paid subscriptions, which may have their own terms and conditions. VW Car-Net requires vehicle cellular connectivity and availability of vehicle GPS signal, and not all services and features are available on all vehicles. Certain Car-Net services, such as Roadside Call Assist, connect out to third-party providers that may require additional payment. Standard text and data rates may apply for app and web features. Certain services may collect location and vehicle information. See Terms of Service, Privacy Statement, and other important information at www.vw.com/carnet. † Paid subscription required for Safe & Secure services. Subscription automatically renews and charged annually at end of subscription term unless canceled. ††The Wi-Fi hotspot feature is intended for passenger use only. 4G LTE coverage is not available in all areas. See materials provided for terms, privacy, data security details. Requires trial or paid Wi-Fi plan from third-party wireless provider. ‡2nd-row captain's chairs reduce total seating capacity to six. ‡‡Always pay careful attention to the road, and do not drive while distracted. SiriusXM audio and data services each require a subscription sold separately, or as a package, by SiriusXM Radio Inc. If you decide to continue service after your trial, the subscription plan you choose will automatically renew thereafter and you will be charged according to your chosen payment method at then-current rates. Fees and taxes apply. Please see the SiriusXM Customer Agreement at www.siriusxm.com for complete terms and how to cancel, which includes calling SiriusXM at 1-888-539-7474. All fees, content, and features are subject to change. ©2020 SiriusXM Radio Inc. SiriusXM, Automatic, Pandora and all related logos are trademarks of SiriusXM Radio Inc. and its respective subsidiaries. All other marks and logos are the property of their respective owners. All rights reserved. § See Owner's Manual for further details and important warnings about the keyless ignition feature. Do not leave vehicle unattended with the engine running, particularly in enclosed spaces, and consult local laws for any limitations on use. §§Driver Assistance features are not substitutes for attentive driving. See Owner's Manual for further details, and important limitations. §§§The Intelligent Crash Response System (ICRS) will only activate in a collision where the airbags deploy or safety belt pretensioners activate. Not all collisions cause airbags to deploy or safety belt pretensioners to activate. §§§§Maximum tow rating when equipped with V6 engine and factory-installed towing hitch. Vehicle load, other accessories, and options may reduce maximum towing capacity. See vehicle Owner's Manual for details.

Add more Volkswagen to your Volkswagen



ACCESSORIES*



Hood Deflector - Tinted



Towing Accessories**



Universal Tablet Holder†



Heavy Duty Trunk Liner with CarGo Blocks and Extended Seat Back Cover

*Genuine Volkswagen Accessories installed by an authorized Volkswagen dealer are covered for the greater of: (1) the accessory limited warranty period (12 months or 12,000 miles, whichever occurs first) from the time of purchase; or (2) the remainder of the New Vehicle Limited Warranty period. Non-genuine Volkswagen Accessories may be covered under separate manufacturer warranties, which can be found at VWAccessoriesWarranty.com. Visit VWAccessoriesWarranty.com or see participating Volkswagen dealer for complete details. **Requires a factory- or dealer-installed tow hitch. Maximum tow rating when equipped with V6 engine and factory-installed towing hitch. Vehicle load, other accessories, and options may reduce maximum towing capacity. See vehicle owner's manual for details. †Tablet not included. Proper installation required. Professional installation may be recommended. See owner's literature and dealer for details.

©2020 Volkswagen Group of America, Inc. Printed in the USA. Volkswagen of America, Inc., believes the information and specifications in this brochure to be correct at the time of printing. Specifications, standard features, options, fabrics, and colors are subject to change without notice. Some features may be unavailable when your vehicle is built. Some vehicles are pictured with options that may be available at extra cost or may not be available on some models. Ask your dealer about the availability of options and verify that the vehicle you select includes the equipment you ordered. Tires are supplied and warranted by their manufacturer. "Volkswagen," the Volkswagen logo, and "Atlas" are registered trademarks of Volkswagen AG. "Bluetooth" is a registered trademark of Bluetooth SIG, Inc. Volkswagen navigation depends on the signals from the worldwide Global Positioning Satellite network. The vehicle's electrical system, and existing wireless and satellite technologies, must be available and operating properly for the system to function. The system is designed to provide you with suggested routes to location addresses, destinations, and other points of interest. Changes in street names, construction zones, traffic flow, points of interest, and other road system changes are beyond the control of Volkswagen of America, Inc. Complete detailed mapping of lanes, roads, streets, toll roads, highways, etc., is not possible, therefore you may encounter discrepancies between the mapping and your actual location. Please rely on your individual judgment in determining whether or not to follow a suggested navigation route. Periodically, the mapping is updated and an update will be required in order to maintain the latest navigation information available to us. Updates will be available for purchase from time to time at additional cost. For further information regarding any Volkswagen model, please call 1-800-DRIVE-VW or just look us up at vw.com.