

**Ford**Kuga

Feel the difference





# 0.965237 of a millimetre

That's the thickness of a clay shaving. And to our designers it can make all the difference, as they hone and refine their clay prototype until they find the perfect expression of energy in motion.

The result is what we call Ford kinetic Design and we're passionate about it.

Bold, beautiful lines that you can't help falling in love with.



Actual size.





**You either have it, or you don't**

A quality that's hard to define, but instantly  
recognisable.

Image below shows Kuga Titanium with MicaStone Metallic paint,  
Appearance pack, 18" Alloy wheels and Titanium X pack. (all optional  
at extra cost)







**It brings you together**

Who can defy the laws of attraction?

Image below shows Kuga Titanium with Micastone Metallic paint, Appearance pack, 18" Alloy wheels, Front and rear park assist and Titanium X pack. (all optional at extra cost)





**It sets you apart**

Everything about you is a reflection of your inner values.

Image below shows Kuga Titanium with Touchscreen navigation PLUS system, Titanium X Pack and Front & rear park assist. (all optional at extra cost)







#### Power converter

Provides direct power for laptops and all your essential gadgets. (Option)



The new Ford Kuga is packed with smart technology. You'll find yourself smiling as it lets you do things faster, more effectively and with style.

That's clever

#### Ford Power

A standard feature on the Ford Kuga  
- just press and go.



#### Capless refuelling

No dirty fuel caps to touch. Plus a unique safeguard ensures nobody can accidentally fill up with the wrong fuel.



#### Mini tailgate

When you only have a small load to put in or get out, open the mini tailgate – it's quicker and more convenient.



#### Rear-view camera

Go into reverse and the rear-view camera comes on in the navigation display, allowing you to see objects behind your car for easy manoeuvring. Available with the optional Touchscreen Navigation PLUS system. (see top image opposite)

Main image opposite shows Kuga Zetec with Moondust Silver Metallic paint and Appearance pack. (all optional at extra cost)





**Intelligent all-wheel drive**

Tested in the harsh conditions of a Swedish winter, the Ford Kuga's intelligent all-wheel drive system uses proven Haldex 4 technology to react instantly to a change in road conditions. Traction is maintained by automatically applying power to the wheels that need it most, ensuring you stay in control whatever the road throws at you.

**Power to spare**  
Ford Kuga's acclaimed 140PS 2.0 TDCi diesel engine has been praised for its refinement, efficiency and responsiveness – and now the 163PS Titanium offers even more impressive performance. Both are available with the option of our advanced PowerShift 6-speed twin clutch automatic transmission.

**CO<sub>2</sub> emissions from only 156 g/km**

All the Kuga style with a lower emission diesel choice on 2-wheel drive models.



The Ford Kuga possesses the renowned driving quality you would expect from the latest generation of Ford cars. Its Control Blade independent rear suspension delivers an on-road experience that is second to none in its class. Its off-road capability is equally impressive. The intelligent all-wheel drive system adjusts automatically to give you optimum control in all conditions.

That Ford feeling



**Feel the power, not the shift**

The perfect combination between the convenience of an automatic and the smoothness and driving performance normally associated with a manual. Ford PowerShift 6-speed twin clutch automatic transmission cleverly selects the next appropriate gear at exactly the right moment, delivering lightning-fast gear changes with no disruption to the flow of power.  
Ford PowerShift delivers improved fuel economy compared to a conventional automatic and also has a manual mode that lets you switch gears at the flick of the lever.



**Note:** PowerShift gear knob insert design may vary slightly from that shown. Vehicles opposite and below are Kuga Titanium with MicaStone Metallic paint, Titanium X pack, 18" Alloy wheels and Appearance pack. (all optional at extra cost)







The attention to detail which has been lavished on the Ford Kuga is immediately evident, from the exterior finish to the quality of the interior. Ford has engineered every single component for dependability, safety and strength with one objective clearly in mind; quality that's built to last.

Precision built with the future in mind



**Brakes built to perform**  
The Ford Kuga's braking system is electronically tuned to meet the demands of on- and off-road driving conditions. Several technologies work in unison, such as ABS with electronic brake-force distribution which balances the braking force across all wheels for safe, stable braking. And there's Emergency Brake Assist, which delivers extra brake power when you need it most.

**Bi-Xenon Front Lighting System**  
With a special jewel-like design, these headlights not only make sure you're seen by other drivers but also illuminate any hazards more clearly than conventional headlights. (Option available as part of Titanium X Pack)



**Safety features**  
Ford's Intelligent Protection System comes as standard on the Ford Kuga. It monitors the readiness of its comprehensive airbag systems as well as its Electronic Stability Programme, Traction Control System and Emergency Brake Assist.





Image above shows Kuga Zetec with Panther Black Metallic paint. (optional)

The Ford Kuga Zetec brings you a blend of stunning design, outstanding driving quality and sheer capability unmatched in its class, plus a generous level of specification.

## Features

- Intelligent All Wheel Drive on 4x4 versions
- 17" 5x2-spoke alloy wheels
- Keyless start with 'Ford Power' button
- Manual air conditioning
- Quickclear heated windscreen
- Ford radio/CD with six speakers and remote audio controls
- Mini Tailgate
- Thatcham Category 1 Alarm
- Leather steering wheel
- Sports front seats
- Trip computer
- Power heated door mirrors with built-in indicator
- Front fog lights
- Portable audio device connector
- Front and rear electric windows
- Global opening and closing
- Remote control door entry
- Driver's seat lumbar adjust
- Driver's seat manual height adjust
- One-touch opening tonneau cover
- Front and rear curtain airbags



### Power heated door mirrors

With an integrated side indicator and puddle light. (Standard)



### 'Ford Power' starter button

No key required. Just press and drive. (Standard)



### Manual air conditioning

Easy controls for fast cooling. (Standard)



### MP3 connection

Play music directly from your MP3 player through the Ford Kuga's stereo. (Standard)







Image above shows Kuga Titanium with MicaStone Metallic paint. (optional)

Get yourself behind the wheel of the Ford Kuga Titanium and you're surrounded by contemporary luxury and technical innovation.

### Additional to Zetec

- Partial leather trim
- Dual electronic automatic temperature control (DEATC)
- Sony DAB audio system
- Cruise control
- Leather gearshift knob
- Automatic rain-sensing wipers
- Automatic headlights
- Auto-dimming rear-view mirror
- Rear seat folding centre armrest
- Footwell lights
- Passenger seat lumbar adjust
- Passenger seat manual height adjust
- Front carpet mats

### Automatic headlights

Switch on automatically when daylight levels drop (standard). Image below shows Bi-Xenon headlights. (Option, included as part of the Titanium X Pack)



### Cruise control

With fingertip controls. (Standard)



### Rain-sensing wipers

Activate automatically when the system senses rain. (Standard)



### 17" alloy wheels

(Standard)



### Leather gearshift knob

A touch of luxury every time you change gear. (Standard)



### Auto-dimming rear-view mirror

A sensor detects harsh lights behind you and dims the mirror. (Standard)







**Individual Interior Packs**

Sophisticated details include seat and door panels trimmed in the finest leather, polished stainless steel Individual scuff plates and many other enhancements.

**Which will you choose?**

The Ford Kuga Individual pack demonstrates relentless attention to luxurious detail.



The Full Exterior Bodystyling Kit\* draws even more admiring glances. The front bumper has body colour lower side panels and an integrated silver skid plate. The unique black front grille features a distinctive silver lower grille surround. Purposeful body colour wheel arch extensions are complemented with 19" Ford 5-spoke Silver alloy wheels (shown below).

**The next level**

\*Front parking sensors are available from Autumn 2010.



**Embossed leather**

The Individual logo is elegantly embossed on both front seats, marking your Kuga out as something extra special.

**Protective floor mats**

Refined yet tough, the floor mats are imprinted with the Individual logo and edged in white piping.

**Large rear spoiler**

Dramatic Ford Individual rear roof spoiler emphasises the Ford Kuga's sporty appearance. (Accessory)

**Rear diffuser**

The Full Exterior Bodystyling Kit with front and rear parking distance sensors\* includes a stylish rear bumper with body colour corners and an integrated silver skid plate. \*Parking sensors available from Autumn 2010.







**Wheel design**

We've reinvented the wheel (almost). New designs have been specially developed to enhance the powerful design of the Ford Kuga.

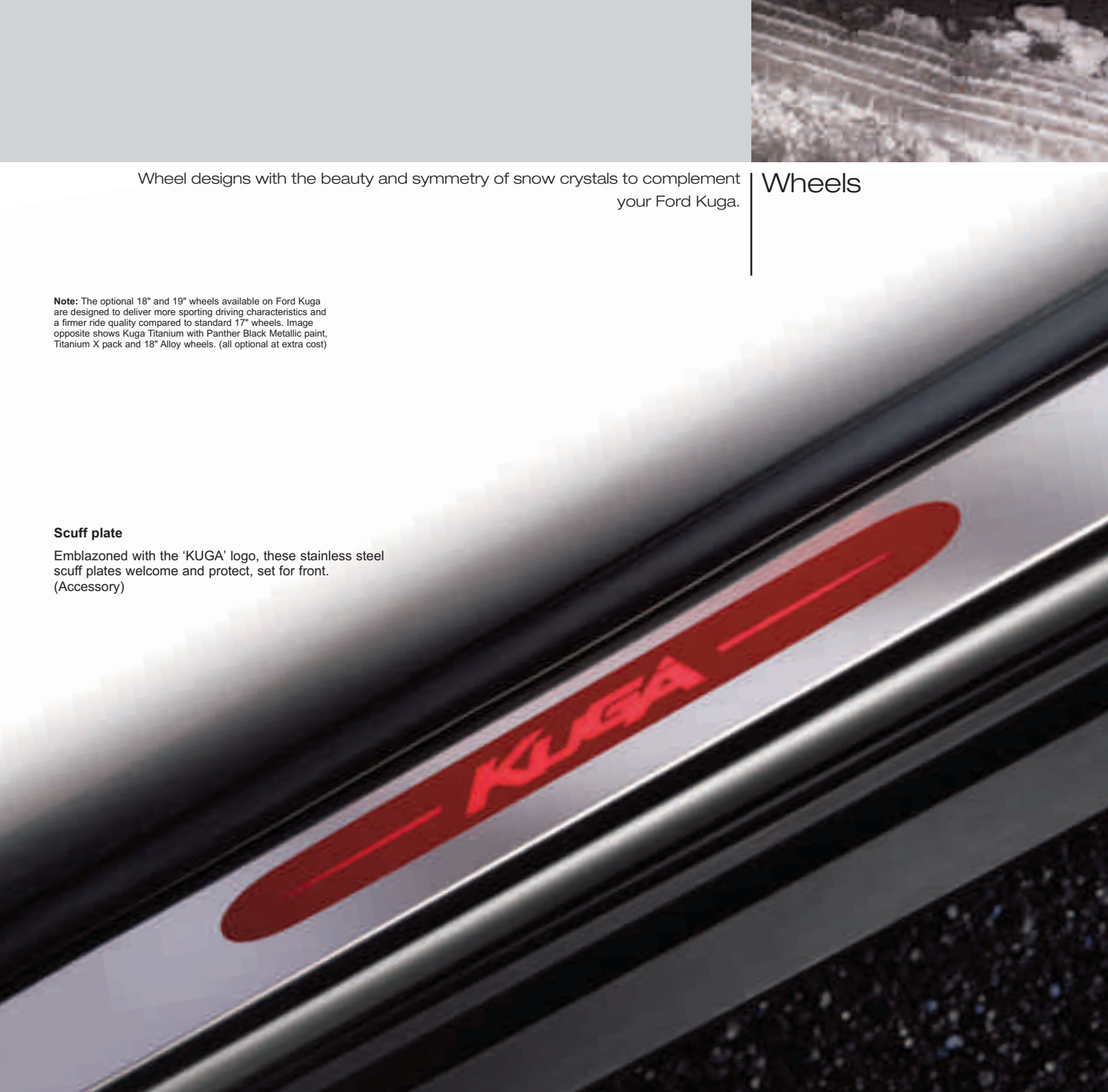
Wheel designs with the beauty and symmetry of snow crystals to complement your Ford Kuga.

**Wheels**

**Note:** The optional 18" and 19" wheels available on Ford Kuga are designed to deliver more sporting driving characteristics and a firmer ride quality compared to standard 17" wheels. Image opposite shows Kuga Titanium with Panther Black Metallic paint, Titanium X pack and 18" Alloy wheels. (all optional at extra cost)

**Scuff plate**

Emblazoned with the 'KUGA' logo, these stainless steel scuff plates welcome and protect, set for front. (Accessory)



Alloy wheel – 17", 5x2-spoke, 235/55 tyres. (Standard on Zetec)

Alloy wheel – 7.5x17", 5x2-spoke, 235/55 tyres. (Standard on Titanium)

Alloy wheel – 8.0x19", 5-spoke, 235/45 tyres. (Option on Titanium and dealer fit accessory)







#### Sony DAB audio systems

Sony DAB audio systems provide improved reception and sound quality, simple easy-to-use tuning and access to an extensive range of radio stations. (See specifications table for availability)

#### Keyless Entry

Lock and unlock your Ford Kuga without a conventional key (option available as part of the Titanium Convenience pack)



Your favourite music can make a journey. The Ford Kuga offers you a wide choice of sound systems, some with built-in navigation.

## Technology

#### Mobile navigation

Turn your Bluetooth®-enabled mobile 'smart' phone into a navigation unit. Simply insert the navigation chip, enter your journey details and the phone will transmit route guidance via the car's audio system and cluster display. (Option not available in UK)



#### Satellite navigation

Leave your maps behind with a simple and intuitive portable Garmin GPS navigation system. Please contact your Ford Dealer for details. (Accessory)



#### Stereo radio/CD

Model 6000 with superb sound quality and 6 speakers. (Standard on Zetec)



#### Touchscreen navigation system

7" colour touchscreen, Bluetooth® with Voice Control System, iPod® USB connector, MP3 compatability, remote audio controls. (Option)



#### Touchscreen navigation PLUS system with rear-view camera

7" colour touchscreen, Bluetooth® with Voice Control System, iPod® USB connector, MP3 compatability, remote audio controls. (Option)  
(Option)







#### Thule 'Xpedition' carrier basket

A versatile basket platform for a variety of loads.  
Made of lightweight, robust aluminium. (Accessory)



The Ford Kuga's generous storage capacity can be expanded with a range of transport accessories.

## Transportation



#### Britax Römer child seat

Various seats available for all ages – also available with ISOFIX. Removable and washable cover. (Accessory)



#### 'Thule' bike carrier

Specially designed to carry modern bikes with frames up to 80 mm in diameter. Also features integral locks to keep bikes safe and secure. (Accessory)

**Thule ski and snowboard carrier**  
Lockable carrier used for your precious ski gear. (Accessory)



#### Aluminium roof rails

Enhance versatility and styling. (Option and accessory)

**Thule roof box 'Pacific'**  
Available in various sizes. (Accessory)



#### Premium bumper protector

Stainless steel appearance protects the bumper from luggage scuffs. Transparent protection foil also available. (Accessory)



#### Detachable tow bar

Also available as fixed version. (Option and accessory)



#### Waeco coolbox

High-performance 35-litre capacity box cools down to a minimum of 1°C. Integrated 230V AC connector. (Accessory)



#### Loadspace liner

Extra solid liner with 100 mm lip height, ideal for transporting wet or dirty items. (Accessory)

#### Thule sailboard carrier

Developed and tested by surfers for surfers. Holds one board and two masts. (Accessory)



#### Thule 'Ranger 90' foldable roof box

A waterproof soft box that is easy to mount, load and unload. Folds down compactly when not in use. (Accessory)



#### Lockable crossbars

Made of solid aluminium, these bars form the base for all attachments such as roof boxes, bike carriers, ski racks, etc. (Accessory)





#### Panoramic roof

Brings more light and a feeling of extra space to the interior. Includes two sunblinds and infrared reflective coating. (Option as part of Titanium X Pack)

Add that final touch of luxury, comfort and convenience from a selection of premium designed features.

## Personalisation



#### Power-fold door mirrors

Door mirrors can retract out of harm's way when parked. Also useful when squeezing through tight spaces. Includes built-in puddle lights. (Option as part of Convenience Packs)

#### Bluetooth® voice control and USB connector for MP3

Connects to the centre console and offers USB port, auxiliary jack and MP3 connection plus Bluetooth® voice control. When not in use, it can be hidden away in the stowage box. (Option)

#### Parking distance sensors

Audible warning helps you judge distance between your car and an obstacle. (Option, also available as part of Convenience Packs)



#### Premium velour mats

Perfectly complements your chosen interior, with nubuck surround and aluminium-effect 'KUGA' logo. Driver's mat is fixed to prevent slippage. (Accessory)





We are all beginning to understand the impact that mobility is having on climate change. While we can't change things overnight, we are working very hard to find solutions.

Ford EConetic Technologies

Ford has developed a range of sustainable technologies, which vary by model, in order to improve fuel economy, reduce CO<sub>2</sub> and lower cost of ownership. These include Ford EcoBoost advanced, fuel-efficient petrol engines, Ford PowerShift transmission and Ford Auto-Start-Stop.

A low emission diesel EConetic derivative is now available. The Ford Fiesta EConetic delivers more than 76.3 mpg, emitting just 98 g/km of CO<sub>2</sub>.

Longer term Ford EConetic Technologies will expand to include electric and hybrid-electric vehicles, biofuel-capable vehicles, plug-in hybrids and hydrogen fuel cell-powered vehicles

Protecting the future

Using our Product Sustainability Index, a design for sustainability management tool, we are addressing the environmental, social and economic impacts of our vehicles from the earliest stages of their development\*.

We are working on a wide range of vehicle technologies from biofuels to hybrids and clean diesels, and in the long term to hydrogen fuel-cell technology with the potential for near zero CO<sub>2</sub> emissions.

Improving our manufacturing facilities

Elsewhere, we are working to minimise the impact of our facilities on the environment, for example by pioneering on-site generation of electricity from sun and wind.

Breathe easier

The allergy-tested interiors of Ford Fusion, Ford Focus, Ford Kuga, Ford Mondeo, Ford S-MAX and Ford Galaxy models were the first worldwide to receive the approval of the independent German TÜV organisation.

Recycling for good

In the interests of sustainability, many of our components contain recycled and renewable content. All Ford vehicles are at least 85% recyclable and 95% recoverable in accordance with ISO 22628. We offer free take-back for qualifying vehicles at the end of their lives. All our take-back points are fully licensed and must also meet additional Ford quality standards for the professional receipt, treatment and recovery of end-of-life vehicles.

This brochure has been produced on paper based on fibres from sustainable forestry, using a 100% chlorine-free (TCF) bleaching process.

\*For more about this topic, see [www.ford.com/go/sustainability](http://www.ford.com/go/sustainability)  
\*\*Dependent on feedstock used and production process. (Source: EUCAR CONCAWE study.)  
Ford supports the sustainable production of biofuels.



Programme for the Endorsement of Forest Certification schemes  
This brochure is printed on PEFC certified paper promoting sustainable forest management.

Our range of finance, insurance, service and assistance options is designed with just one thing in mind – making life easy for you.

Ford Credit

When it comes to financing your vehicle, your Ford Dealer can remove the need for lengthy phone calls, endless online surfing and form-filling. They can help you complete an application and will get a decision, usually within 15 minutes.

So what can your Ford Dealer provide?

**Ford Options** offers increased flexibility and gives you the opportunity to drive a new Ford more often. At the end of the agreement you can Renew, Return or Retain your Ford.

**Ford Acquire** is ideal if you're a private or business user who wants a straightforward financing plan to own your vehicle. Simply put down a deposit, pay the remainder, plus interest, over an agreed period and the vehicle becomes yours.

**Ford Business Partner** Contract Hire\* provides an affordable, convenient and flexible way to finance your business vehicle. Business Users only.

**Ford Insure\*\*** is our comprehensive motor insurance product, designed specifically for Ford drivers.

Ford more information on our finance products please visit [ford.co.uk](http://ford.co.uk).

Finance subject to status. Guarantees/indemnities may be required. Freepost Ford Credit.

\*Business Partner Contract Hire is provided by Lex Vehicle Leasing Limited, trading as Ford Business Partner, Heathside Park, Heathside Park Road, Stockport SK3 0RB.

\*\*Ford Insure is underwritten and administered by Royal & Sun Alliance Insurance plc, which is authorised and regulated by the Financial Services Authority. FCE Bank plc is authorised and regulated by the Financial Services Authority and acts as an insurance intermediary in relation to Ford Insure. In relation to this same product, Ford Motor Company Limited is an appointed representative of FCE Bank plc. Ford Motor Company Limited acts as an insurance intermediary. Calls may be recorded and monitored.

Services

Ford Protect

Your new Ford is protected by a 3-year/60,000-mile Ford Protect Classic Plan Warranty, and comes with Ford Assistance roadside cover throughout the UK and Europe for 1 year. You can also upgrade to a Ford Protect Premium Plan, giving you the option of scheduled servicing and extended Ford Assistance.

Ford Service

Like any vehicle, your new Ford needs servicing regularly to keep it in the best condition and to maintain its value. The Ford authorised repairer network is independently quality checked to ensure the highest standards of workmanship are maintained. Ford has the largest repairer network in the UK, and uses Ford-trained technicians, Ford-specific tools and the latest computerised diagnostic equipment specifically for your Ford.

Ford Accident Repair Centres

Should your Ford require accident repair, an approved Ford Accident Repair Centre is the best place to return your vehicle to its pre-accident condition. Repairers displaying the Ford Accident Repair Centre sign meet the rigorous customer service, technical and quality standards demanded by Ford. Ford trained technicians, the latest repair equipment and the use of original parts mean that the future safety and value of your vehicle are assured.

Contacts

Ford Customer Relationship Centre

In the unlikely event that your Ford Dealer can't help you or if you need to speak to us directly, call 0845 841 1111 at local rates.

Ford Rental – local service nationwide

Car and van rental from our latest model range. Contact your local Ford Dealer for more information.

Ford Mobility

Our MAGiC care centre provides free information on all motoring and mobility issues, including special offers for HRDLA and Motability recipients. Call free on 0800 240 241.



Exterior equipment

	Zetec	Titanium
Design features		
Door mirrors – Body colour housing, heated, electric operation, integrated side indicator	●	●
Door mirrors – Puddle lights	●	●
Door mirrors – Electrically foldable	□	□
Front upper grille – Chrome surround	●	●
Front lower grille – Moondust Silver colour surround	●	●
Front fog lights	●	●
Privacy glass – Dark glass to the rear windows	□	□
Rear spoiler – Body colour	●	●
Roof rails – Aluminium finish	□	□
Towbar – Detachable (includes Trailer Stability Function)	○	○
Wheels		
Alloys – 17"x7½", 5x2-spoke, 235/55 tyres	●	●
Alloys – 18"x7½", 5-spoke, 235/50 tyres	○	○
Alloys – 19"x8", 5x2-spoke, 235/45 tyres	–	○
Spare – Mini steel	●	●
Locking wheels nuts	●	●

Exterior equipment

	Zetec	Titanium
Convenience features		
Ford Easy Fuel capless refuelling system	●	●
Headlights – Automatic on/off (includes automatic wipers with rain sensor and auto-dimming rear-view mirror)	–	●
Headlights – Bi-xenon, with automatic levelling and jet wash	–	□
Headlight courtesy delay	●	●
Panoramic roof – Fixed	–	□
Parking distance sensors – Front and rear	○/□	○/□
Tailgate wash/wipe	●	●
Wipers – Front, with 6-speed interval settings	●	–
Wipers – Front, automatic wipe with rain sensor and variable sensitivity adjustment	–	●
'Quickclear' – Heated windscreen, with heated washer jets	●	●
Windscreen – Solar reflect, heat reflecting	–	□
Option Packs		
Zetec Convenience Pack – Cruise control, front and rear parking distance sensors and electrically foldable door mirrors	○	–
Titanium Convenience Pack – Keyless entry, front and rear parking distance sensors and electrically foldable door mirrors	–	○
Zetec Appearance Pack – Privacy glass and aluminium finish roof rails	○	–
Titanium Appearance Pack – Privacy glass and aluminium finish roof rails	–	○
Titanium X Pack – Full leather trim, heated front seats with variable control, driver's 6-way electric adjustment, panoramic roof, Bi-Xenon headlights and solar reflect windscreen	–	○
'Individual' Pack – Full 'Individual' body styling kit, front grille, Body contoured side skirts and wheel arches. Premium Ebony leather, scuff plates and floor mats with 'Individual' logo, aluminium foot pedals (manual transmission only), high gloss Dark Grey centre console and door handle trim, 19" alloy wheels, aluminium finish roof rails, privacy glass and front and rear park assist	–	○

● = Standard, ○ = Optional, at extra cost, □ = Part of option pack, at extra cost.



Interior equipment

	Zetec	Titanium
Design features		
Door lever – Aluminium	●	●
Floor mats – Front, carpet	–	●
Gear knob – Leather	–	●
Scuff plates – Front, Moondust Silver colour	●	●
Steering wheel – 4-spoke, leather trimmed with silver accents	●	●
Steering column – Reach and rake adjustable	●	●
Audio and communication systems		
Ford 6000 Radio/CD – 6 speakers, remote audio controls	●	–
Sony DAB Radio/CD with 8 premium speakers, remote audio controls, MP3 compatible (with Bluetooth® and USB/iPod® connectivity port on Zetec)	○	●
Touchscreen Navigation system with Bluetooth & USB – Touchscreen Navigation system with Radio/CD – 7" colour touch screen display, SD Memory card with Western European mapping data), remote audio controls, Bluetooth & voice control, USB connectivity port. Replaces standard specification audio system when ordered.	○	–
Touchscreen Navigation PLUS system with Bluetooth & USB Radio/CD – 7" colour touch screen display, Rear view camera, remote audio controls, MP3 compatible, touchscreen allows control of radio/CD and dual electronic air conditioning; heated front seats and Bluetooth® with USB connectivity port. Replaces standard specification audio system when ordered.	–	○
Portable audio device connector	●	●
Bluetooth® Hands Free Phone and Voice Control System for the command of audio system, air conditioning and mobile phone (with USB/iPod® connectivity port on Titanium)	○	○
USB/iPod® connectivity port. (only available with Bluetooth® and Voice Control System in conjunction with Sony DAB audio and as part of the Touchscreen navigation and Touchscreen navigation PLUS system)	○	○
Climate control		
Air conditioning – Manual control	●	–
Air conditioning – Dual Electronic Automatic Temperature Control (DEATC)	–	●
Convenience features		
‘Ford Power’ engine start/stop push button	●	●
Cruise control	□	●
Accessory power socket (12V)	●	●
Centre console – Premium, with sliding armrest, additional 12V power socket and large stowage bin	●	●
Power converter – 230V pulse charge type, limited to 150W	○	○
Courtesy light – For front passengers, overhead with theatre-style dimming; ambient lighting	●	●
Courtesy light – Footwell area	–	●
Courtesy light – Front and rear reading lights	●	●
Stowage pockets – Front seat backs	●	●
Stowage unit – Located in upper instrument panel	●	●
Variable dimming of instrument cluster and radio screen display	●	●
Windows – Electric front and rear with one-touch lowering/closing, ‘bounce-back’ sensor and global opening/closing	●	●
Seats		
Front seats – Sports-style, fabric trim	●	–
Front seats – Sports-style, partial leather trim	–	●
Front seat – Driver’s manual lumbar support adjustment	●	●
Front seat – Driver’s manual height and fore/aft adjustment	●	●
Front seat – Driver’s electric height, fore/aft and backrest angle adjustment (only if Titanium X Pack is specified)	–	□
Front seat – Passenger’s manual fore/aft adjustment	●	–
Front seat – Passenger’s manual height and fore/aft adjustment (includes manual lumbar support)	–	●
Front seats – Heated cushion and seatback, with 5 variable positions (also available with Titanium X Pack)	–	□
Seats – Leather trimmed (only available with Titanium X Pack)	–	□
Rear seat – 60/40 split back and cushion	●	●
Rear seat – Folding centre armrest, with two integrated cup holders and flip-up stowage	–	●

Interior equipment

	Zetec	Titanium
Loadspace		
Accessory power socket (12V) in luggage compartment	●	●
Tie-down hooks	●	●
Tonneau cover – one touch opening	●	●

● = Standard, ○ = Optional, at extra cost, □ = Part of option pack, at extra cost. The Bluetooth® word mark and logos are owned by the Bluetooth SIG, Inc. and any use of such marks by Ford Motor Company Limited and its associated companies is under licence. Other trademarks and trade names are those of their respective owners.

Safety and security

	Zetec	Titanium
Safety		
Intelligent Protection System (IPS)	●	●
Anti-lock brakes (ABS) with electronic brake-force distribution (EBD)	●	●
Electronic Stability Programme (ESP) with Traction Assist (includes Emergency Brake Assist (EBA))	●	●
Trailer Stability Function (only when optional Ford detachable tow bar is specified)	●+	●+
Hazard Warning Light – Automatic activation of all turn indicators when emergency braking is applied	●	●
Airbags – Driver’s and front passenger’s*	●	●
Airbags – Front side impact	●	●
Airbags – Front and rear curtain	●	●
Airbags – Front passenger’s de-activation switch (Dealer-fit option)	○	○
Seats – ISOFIX mounting provision for child seats (outer seats only)	●	●
Deflation Detection System (DDS)	○	○
Security		
Remote central double locking	●	●
Thatcham CAT 1 approved perimeter and volume sensing alarm	●	●
Keyless Entry System – Full hands-free vehicle entry system	–	□

● = Standard, ○ = Optional, at extra cost, ●+ = Standard if optional Ford detachable tow bar is specified. **\*Note: A child seat should never be placed in the front passenger seat when the Ford vehicle is equipped with an operational front passenger’s airbag. The safest place for children is properly restrained on the rear seat.**

Insurance groups

Engine	Drive	Zetec	Titanium
2.0 Duratorq TDCi 6-Speed Manual (140PS)	4x2 FWD	18E	21E
2.0 Duratorq TDCi 6-Speed PowerShift Automatic (140PS)	4x4 AWD	18E	–
2.0 Duratorq TDCi 6-Speed Manual (140PS)	4x4 AWD	18E	–
2.0 Duratorq TDCi 6-Speed PowerShift Automatic (163PS)	4x4 AWD	–	21E
2.0 Duratorq TDCi 6-Speed Manual (163PS)	4x4 AWD	–	21E
2.5 Duratec Petrol 6-Speed Manual (200PS)	4x4 AWD	–	24E
2.5 Duratec Petrol 5-Speed Automatic (200PS)	4x4 AWD	–	22E

E = Exceeds security requirement for model concerned and group rating has been reduced. Please refer to [www.ford.co.uk](http://www.ford.co.uk) for the latest information.



Mechanical features

	Zetec	Titanium
<b>Steering</b>		
Electric Hydraulic Power-Assisted Steering (EHPAS)	●	●
<b>Suspension</b>		
Front – Independent with MacPherson struts and anti-roll bar	●	●
Rear – Independent Control Blade multi-link system and anti-roll bar	●	●

● = Standard.

Fuel and performance data

	Euro	Drive	Maximum power PS (kW)	Torque Nm (Nm with overboost)	CO <sub>2</sub> emissions (g/km) <sup>**</sup>	Fuel consumption in L/100 km (mpg) <sup>**</sup>			Performance <sup>°</sup>		
						Urban	Extra Urban	Combined	Max. speed (mph)	0-60 mph (secs)	30-60 mph* (secs)
2.0 Duratorq TDCi 6-Speed Manual (140PS)	V	4x2 FWD	140 (103)	320 (340)	156	7.5 (37.7)	5.0 (56.5)	5.9 (47.9)	116	9.8	8.2
2.0 Duratorq TDCi 6-Speed Manual (140PS)	V	4x4 AWD	140 (103)	320 (340)	159	7.6 (37.2)	5.1 (55.4)	6.0 (47.1)	114	10.0	8.6
2.0 Duratorq TDCi 6-Speed PowerShift Automatic (140PS)	V	4x4 AWD	140 (103)	320 (340)	179	8.5 (33.2)	5.8 (48.7)	6.8 (41.5)	114	10.3	n/a
2.0 Duratorq TDCi 6-Speed Manual (163PS)	V	4x4 AWD	163 (123)	320 (340)	159	7.6 (37.2)	5.1 (55.4)	6.0 (47.1)	121	9.3	7.8
2.0 Duratorq TDCi 6-Speed PowerShift Automatic (163PS)	V	4x4 AWD	163 (120)	320 (340)	179	8.5 (33.2)	5.8 (48.7)	6.8 (41.5)	119	9.6	n/a
2.5 Duratec Petrol 6-Speed Manual (200PS)	V	4x4 AWD	200 (147)	320	234	13.9 (20.3)	7.6 (37.2)	9.9 (28.5)	130	7.9	7.6
2.5 Duratec Petrol 5-Speed Automatic (200PS)	V	4x4 AWD	200 (147)	320	244	14.6 (19.3)	7.8 (36.2)	10.3 (27.4)	127	8.5	n/a

<sup>\*</sup>In 4th gear. <sup>°</sup>Ford test figures. <sup>\*\*</sup>All CO<sub>2</sub> emissions figures in g/km and fuel consumption figures in L/100 km are tested in accordance with 80/1268/EEC as amended. The CO<sub>2</sub> emissions and fuel consumption test figures shown in the chart do not express or imply any guarantee of the emissions or fuel consumption of a car of the class in question. All the figures are based on tests conducted on vehicles with Zetec equipment level and with standard wheels and tyres; optional or accessory wheels and tyres may have an effect on the emissions and fuel consumption of a vehicle. **Note:** All petrol engines are equipped with a catalytic converter. **Basic kerbweight** includes driver (75kg), lubricants and filled fuel tank (90%) **Towing limits** quoted represent the maximum towing ability of the vehicle at its Gross Vehicle Mass to restart on a 12 per cent gradient at sea level. The performance and economy of all models will be reduced when used for towing. **Max Nose weight** is 105kg.

Model availability, weights and loads

	Kerbweight (kg) <sup>°</sup>	Gross Vehicle Mass (kg)	Max. Towable Mass (kg)
<b>Ford Kuga</b>			
2.0 Duratorq TDCi Diesel (140PS) 6-Speed Manual (Stage V) FWD	1584	2160	2100
2.0 Duratorq TDCi Diesel (140PS) 6-Speed Manual (Stage V) AWD	1614	2130	2100
2.0 Duratorq TDCi Diesel (140PS), PowerShift 6-speed Auto (Stage V) AWD	1672	2160	2100
2.0 Duratorq TDCi Diesel (163PS) 6-Speed Manual (Stage V) AWD	1614	2130	2100
2.0 Duratorq TDCi Diesel (163PS), PowerShift 6-speed Auto (Stage V) AWD	1672	2160	2100
2.5 Duratec Petrol (200PS) 6-Speed Manual (Stage V) AWD	1608	2130	2100
2.5 Duratec Petrol (200PS) 5-Speed Auto (Stage V) AWD	1653	2130	1500

<sup>°</sup>Represents the lightest kerbweight assuming driver at 75kg, full fluid levels, subject to manufacturing tolerances and options, etc, fitted. **Note** all petrol engines are equipped with a catalytic converter. All vehicles are manual unless stated. **Towing limits** The performance and economy of all models will be reduced when used for towing. **Nose weight** limit is a maximum 105kg on all models. For further guidance, refer to the National Caravan Councils Towing Guide.

Dimensions

Overall length (mm)	4443
Overall width with/without mirrors (mm)	2128/1842
Overall height (unladen) (with roof rails) (mm)	1710
Turning circle – kerb to kerb (m)	11.5
<b>Luggage capacity (litres)<sup>†</sup></b>	
5-seat mode (laden to package tray) (with mini steel spare)	360
2-seat mode (laden to roof) (with mini steel spare)	1355
<b>Fuel tank capacity (litres)</b>	
Petrol	66.0
Diesel	66.0

<sup>†</sup>Measured using the GCIE method. Dimensions may vary dependent on the model and equipment fitted.





# Colour and trim



### Solid body colour

- 1. Blazer Blue
- 2. Frozen White

### Metallic body colours\*

- 3. Micastone
- 4. Electric White
- 5. Mars Red
- 6. Midnight Sky
- 7. Moondust Silver
- 8. Panther Black

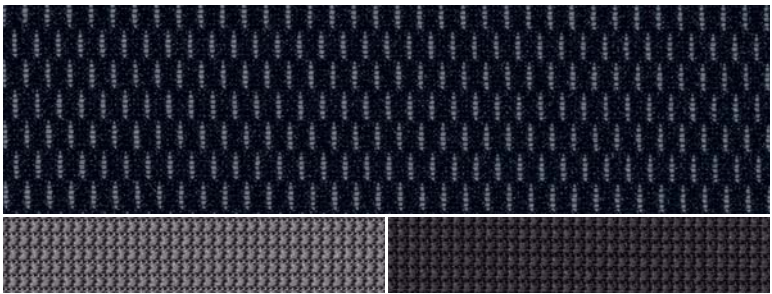
\*Metallic body colours are options at extra cost.



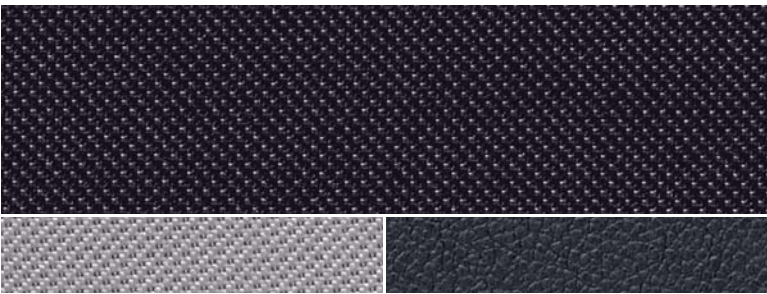
## Colour and trim

Model	Zetec	Titanium		
Seat facing trim	Rack	Airfield/partial Napoli leather	Napoli leather*	'Individual' full leather* (no image)
Seat facing trim colour	Generic Silver	Ebony	Ebony	Ebony
Seat back stripe colour	Gecko in Metal Grey	Generic Silver	N/A	N/A
Door handle colour	Antimon	Pontos	Pontos	Piano Dark Grey
Gearshift bezel colour	Triton Silver	Triton Silver	Triton Silver	Triton Silver
H bezel colour	Antimon	Pontos	Pontos	Piano Dark Grey
Solid body colour				
Frozen White	S	E	E	E
Blazer Blue	S	E	E	E
Metallic body colours*				
Mars Red	S	E	E	E
Moondust Silver	S	E	E	E
Panther Black	S	E	E	E
Micastone	S	E	E	E
Midnight Sky	S	E	E	E
Electric White (Pearlescent)	–	E	E	E

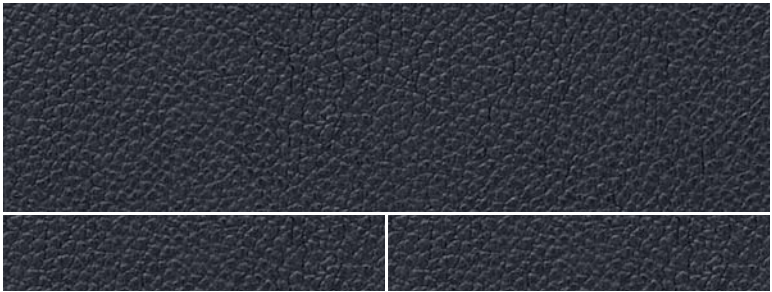
Seat trim colour key: S – Generic Silver, E – Ebony. \*Metallic paint is optional, at extra cost. Leather trims are optional as part of the Titanium X Pack and 'Individual' Pack, at extra cost.



Seat facing: Rack in Generic Silver  
Stripe: Gecko in Metal Grey  
Bolster: Gecko in Anthracite



Seat facing: Airfield in Ebony  
Stripe: Airfield in Generic Silver  
Bolster: Napoli leather\* in Ebony



Seat facing: Napoli leather\* in Ebony  
Bolster: Napoli leather\* in Ebony

\*Leather trim is optional at extra cost.



**Illustrations, descriptions and specifications.** This brochure was correct at the time of going to print. However, Ford policy is one of continuous product development. The right is reserved to change specifications, colours and prices of the models and items illustrated and described in this publication at any time. For the latest details always consult your Ford Dealer. **Optional equipment.** Throughout this publication, wherever a feature is described as being an 'Option' or 'Optional Fitment/Pack', etc., you should assume that it will be at extra cost to the base vehicle, unless specifically stated to the contrary. All models and colour combinations are subject to availability. **Note.** Some images portrayed are of a pre-production model and/or are computer generated, therefore, the design/features on the final version of the vehicle may differ in various respects. In addition, some of the features shown on the vehicles may be optional. **Note.** This brochure contains both original Ford accessories as well as a range of carefully selected products from our suppliers, which are featured under their own brands. All supplier branded products are subject to warranty terms defined by the relevant suppliers and do not lie within the responsibility of Ford. **Note.** The Bluetooth® word mark and logos are owned by the Bluetooth SIG, Inc. and any use of such marks by Ford Motor Company is under licence. Other trademarks and trade names are those of their respective owners.

**The Government fuel figures** do not express or imply any guarantee of the fuel consumption of any particular car. The cars themselves have not been tested and there are inevitably differences between individual cars of the same model. In addition, a car may incorporate particular modifications. Furthermore, the driver's style and road and traffic conditions, as well as the extent to which the car has been driven and the standard of maintenance, will affect its fuel consumption. **Insurance groups** are only as recommended by the Association of British Insurers. You should always consult your insurance adviser for confirmation.



**Allergy-tested interior** All materials used in the manufacture of the interior of this vehicle meet the strict requirements of the TÜV TOXPROOF Criteria Catalogue for Vehicle Interiors by the TÜV Produkt und Umwelt GmbH and are designed to minimise the risk of allergic reactions. With doors and windows closed, the interior materials selected – together with the integrated pollen filter – protect the passengers against most allergising particles from the outdoor air. At higher temperatures, the additional use of air conditioning is recommended.



Collect Nectar points at participating Ford Dealers and Authorised Repairers now. So take a look at the latest Ford Service Promotions by visiting the Owner Services section within [www.ford.co.uk](http://www.ford.co.uk).



Ford and BP – working together to reduce fuel consumption and emissions.



Published by Ford Motor Company Limited,  
Brentwood, Essex, England.  
Registered in England No. 235446.  
**FA 1533/5**  
BJN 307168. FoE H42E.  
PN 079509/1210/78m/GBR en  
December 2010.  
© Ford Motor Company Limited.

[www.ford.co.uk](http://www.ford.co.uk)

