

FORD GALAXY



Go Further

Go Further

These two words capture the spirit of Ford and our commitment to you. We go further so that you can, too.

2-7

Ford kinetic Design

Ford kinetic Design is the reason why our vehicles look more exciting than ever before. Bold, dynamic lines that create energy in motion.

8-11

Quality

We design and build your Ford to feel as good after many years of service as it did the day you picked it up. And to drive just as beautifully, too.



12-13
Green

Using advanced Ford ECOnetic Technology, we're committed to creating vehicles with improved fuel economy, reduced CO₂ emissions and a lower overall cost of ownership.



14-15
Safe

Ford's Intelligent Protection System uses sophisticated technology designed to help prevent an accident and, if one should happen, to protect you.



16-17
Smart

Cars that park themselves, windscreen wipers that know when it's raining – just some of the many clever solutions from Ford that make life a little easier.



18-23
Choose your Ford Galaxy

- Zetec
- Titanium
- Titanium X

24-25
The range

26-31
Add those extra touches

- Wheels
- Sound and vision
- Personalise

32
Making life easy

33-39
Specifying your Ford Galaxy

40-42
Colour and trim



**The ultimate space capsule for
your intrepid little voyager**

'Prepare to undock from the mother ship,
Commander. Initiate launch sequence!'

Model shown is a Ford Galaxy Titanium X in Parkside metallic paint (option),
Keyless entry (option), Touchscreen Navigation PLUS system (option) and
sliding roof crossbars (option and accessory).



**Because every little princess
deserves a beautiful carriage**

‘...and the king took me to the tallest tower in
the highest castle in all the land.’

Model shown is a Ford Galaxy Titanium in Panther Black metallic paint
(option) with 18" 5-spoke alloy wheels (option).



**Special enough for the most demanding little diva
And her entire entourage too**

'I wanted dad to wear a chauffeur's hat,
but he said he had to draw the line somewhere.'

Model shown is a Ford Galaxy Titanium X with Windsor leather interior in Ebony, Touchscreen Navigation PLUS system (option), Variable Climate (heated/cooled) front seats (option), Electric park brake (option), Rear Seat Entertainment System (DVD) (option) and Interactive Vehicle Dynamic Control (IVDC) (IVDC is not available in the UK).





Ready for anything

From arctic cold to searing heat, our environmental test laboratory can recreate the worst weather imaginable to ensure your car will perform faultlessly, even in the most extreme conditions.

For your listening pleasure

The Premium Sound System's high-performance speakers and powerful 90W subwoofer mean you'll enjoy only the highest quality sound reproduction. (Optional on Titanium and Titanium X with Sony DAB audio system)



Ford Galaxy is created to endure. From the precision of the engineering to the luxury and craftsmanship of the interior, only true quality can stand the test of time.

Enduring quality



LED rear lights

Lighting technology at its most eye-catching. (Standard)



A rarefied atmosphere

Ford Galaxy's soft Windsor leather seats ensure you will always feel special, whatever the occasion. (Option on Titanium, standard on Titanium X)



Relentless testing

During its development, we test drove the Ford Galaxy the equivalent of 87 times around the globe. Pushed it through the extremes of real-world weather, from -40°C to +80°C and tested it over and over again. It's a car you can rely on, right down to the smallest ball bearing.





Power on demand

Twin-clutch Ford PowerShift transmission offers smooth, dazzlingly fast automatic gear changes, with no interruption to the flow of power. (Option)

Boosting efficiency

Our excellent range of turbo diesel engines now range from the latest 1.6 115PS Duratorq TDCi with Auto-Start-Stop, contributing to a CO₂ figure of 139g/km, up to the 2.2 200PS Duratorq TDCi with 420 Nm of torque. These are joined by the next generation of high-efficiency EcoBoost SCTi turbocharged petrol engines, which combine higher power and a broader spread of torque with reduced emissions and lower fuel consumption. The 1.6 EcoBoost SCTi with Auto-Start-Stop delivers 160PS, with excellent combined fuel consumption of 39.2 mpg.

With its advanced technology and premium design, the Ford Galaxy combines first-class driving quality with the highest levels of space, comfort and innovation. Simply put, it's the most accommodating and refined family car on the road today.

A great place to be



Feel the power, not the shift

Ford PowerShift is the new generation of automatic transmissions, featuring a new state-of-the-art 6-speed automatic transmission.

Ford PowerShift cleverly selects the next appropriate gear at exactly the right moment, delivering lightning-fast gear changes with no disruption to the flow of power.

Ford PowerShift delivers improved fuel economy compared to a conventional automatic and has a manual mode that allows you to switch gears at the flick of a lever.



Welcome aboard

Ford Galaxy's light, airy and relaxed atmosphere can be further illuminated by the brilliant glass panorama roof. A Solar Reflect coating helps to keep the interior cool, while internal roof sun blinds provide shade and privacy when required. (Standard on Titanium X; option on Titanium and Zetec)

Keyless entry with 'Ford Power' starter button

Unlock the doors without ever holding the key. Just keep the key fob with you in your pocket or bag. Ford power starter button (shown below) is standard on Titanium & Titanium X. Keyless entry is optional on Titanium and Titanium X.

Adjustable Speed Limiting Device

Uses Ford Galaxy's familiar cruise control switches (cruise control is standard on Titanium and Titanium X) to set the car's top speed from 20mph and upwards. (Standard on Titanium and Titanium X; part of optional cruise control on Zetec).

The Soft-feel leather trimmed steering wheel adds a touch of luxury to every journey (Standard on Titanium and Titanium X).

Image (left) also shows the controls for the optional Adaptive Cruise Control (ACC).



Ford EcoBoost

With direct petrol injection, turbocharging and variable valve timing, Ford EcoBoost engines deliver power and torque consistent with larger displacement engines. For example, the 160 PS EcoBoost SCTI engine with Auto-Stop-Start in Ford Galaxy has more power than the previous 2.0 Duratec petrol engine, however it achieves around 12% better fuel economy and 12% lower CO₂ emissions.



Ford EConetic Technology is designed to reduce your cost of ownership through improved fuel economy and lower CO₂ emissions, without any compromise on performance or driving quality. Much of this technology is brought together in our EConetic engines, which deliver some of the lowest fuel consumption and CO₂ emissions in their class.*

Technology for economy and sustainability

Ford EConetic Technology

- Ford EcoBoost fuel-efficient petrol engines
- Ford Duratorq TDCi
- Ford PowerShift dual clutch automatic transmission – combines the efficiency of manual transmission with the convenience of a conventional automatic
- Ford Auto-Start-Stop (see left)
- Ford Smart Regenerative Charging – charges the battery every time you lift off the accelerator when driving
- Ford Electric Power-Assisted Steering – a more efficient system that uses less engine power than conventional power-assisted steering
- Active Grille Shutter – improves aerodynamics and lowers fuel consumption
- Ford Eco Mode (see left)
- Shift Indicator – advises you when to change gear for maximum fuel efficiency

A family of advanced engines

In addition to our multi award-winning Ford EcoBoost petrol engines, we offer two more technologically advanced engines. Our Duratorq TDCi diesel engines feature common rail systems that deliver remarkably low fuel consumption and CO₂ emissions*, plus a quiet drive thanks to a two-stage fuel injection process. Our Duratec petrol engines offer you a great balance of performance and economy. They're made from ultra-light aluminium and feature state-of-the-art fuel injection for optimum fuel efficiency and reduced CO₂ emissions*.

*see specification tables for fuel economy and CO₂ figures

Ford power of choice

Ford's alternative fuel vehicles all harness our latest advances in engine technology. They're the answer if you want low tax and even better fuel economy without compromising on design or drive dynamics.



International Engine of the Year
Ford 1.0 litre EcoBoost



Focus Electric

Powered exclusively by a lithium-ion battery system, the Focus Electric is one of the most technologically advanced cars on the road today.

Ford Auto-Start-Stop

When your vehicle is idling at a standstill, the engine automatically shuts down to save fuel. When you want to drive off, the engine immediately restarts.

Ford Eco Mode

This intelligent driver information system helps you achieve optimum fuel efficiency.

Ford Duratorq TDCi

Our advanced diesel engines provide exceptional fuel economy and low CO₂ emissions.

(See specification tables for fuel economy and CO₂ figures)





Clearly better

Ford Galaxy's Quickclear electrically heated windscreen clears snow, ice or condensation at the touch of a button. (Standard)



Ford Galaxy's advanced Intelligent Protection System (IPS) uses a range of sophisticated technologies to keep you protected, including an ultra-high strength steel safety cage, an anti-lock braking system (ABS) with electronic brake-force distribution (EBD), and front, curtain and driver's knee airbags.

Intelligent protection



Emergency Brake Warning

The brake lights automatically flash during emergency braking, giving following drivers advance warning of a potentially hazardous situation.



The Ford Galaxy IPS includes:

1. Driver's and front passenger's airbags**
2. Driver's and front passenger's side impact airbags
3. Side curtain airbags for first- and second-row seats
4. Driver's knee bolster airbag
5. Collapsible steering column and pedals
For optimised protection of driver's legs and feet.
6. Robust computer-optimised body structure with ultra-rigid safety cell and crumple zones
7. Pre-tensioners, load-limiting retractors and height-adjustable mounts on front seat belts
8. Anti-submarining seat bases
9. Anti-lock brakes (ABS) with electronic brake-force distribution (EBD) and Emergency Brake Assist (EBA) (included with ESP)
10. Emergency Brake Warning

***Note:** A child seat should never be placed in the front passenger seat when the Ford vehicle is equipped with an operational front passenger's airbag*. The safest place for children is properly restrained on the second-row seats.

***A passenger airbag deactivation switch is available as a Dealer-fitted option**

Tyre Pressure Monitoring (TPMS)

Available as an option, TPMS displays your tyre pressures and alerts you in case of deflation (image shown here is with Ford Convers+).



Lane Departure Warning

Lane Departure Warning alerts the driver if they stray from their lane on the highway** without using the indicator, by sending vibrations through the steering wheel. Lane Departure Warning also includes Driver Alert and Auto High Beam. (Included as part of the optional Driver Assistance packs).

****Operates at speeds over 43 mph on multi-lane roads with clearly visible lane markings.**



Get folding

Popular belief holds that a sheet of paper can only be folded in half seven times. Ford Galaxy's seats, on the other hand, can be folded in any of 32 different ways so you can find the perfect configuration.

Capless refuelling with Ford Easy-Fuel

No dirty fuel caps to touch. Ford Easy-Fuel with its unique safeguard ensures nobody accidentally fills up with the wrong fuel. (Standard)



Your car should be as versatile as you are. Ready to respond quickly and easily to fresh challenges, as and when they come along.

Smart thinking



Ford Fold Flat System (FFS)

Each second and third row rear seat folds flat individually in seconds, creating a myriad of passenger and load-carrying possibilities. Second row seats also slide forward and back to optimise leg room and all rear seat backs tilt for improved comfort.



Power rear door and window child locks

Secure your most precious cargo with a flick of a switch on the driver's door (Standard).



Taking care of the small things

Neatly hidden within the rear doors when not in use, the integrated sunblinds can be easily raised to protect rear occupants from the sun's rays (Available as part of the optional Space Pack).



Child observation mirror

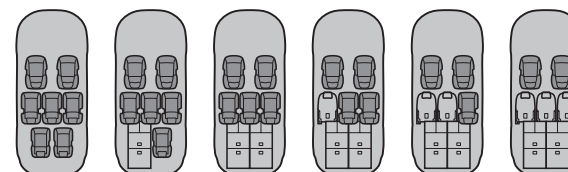
Located in the front overhead console to help you keep a watchful eye on your youngest passengers (Standard for Titanium and Titanium X).



Blind Spot Information System

Blind Spot Information System is an optional high-tech visual aid that's designed to make longer journeys a far more relaxing experience.

As another vehicle – a car, van or lorry – enters your blind spot, Blind Spot Information System alerts you with a discreet warning light built into the driver and passenger's door mirror.





Zetec



Zetec proves that premium quality and eye-catching style are integral to every Ford Galaxy.

Key features

- 16" 5x2-spoke alloy wheels
- Thatcham Approved alarm
- Front fog lights, LED rear lights
- Park assist - front and rear sensors
- Bluetooth® Hands-Free and Voice Control System
- Electrically-operated and heated door mirrors
- Quickclear heated front windscreen
- Air conditioning with DEATC
- Power front and rear windows
- 7 individual seats with Ford Fold Flat System (FFS) (2nd and 3rd row)
- ISOFIX attachments for child seats (all three second row seats)
- Driver's seat electric height adjust with manual lumbar support
- Tinted glass
- Full length centre console
- Ford Intelligent Protection System (IPS)*
- Ford Easy-Fuel capless refuelling system with misfuel inhibitor
- Stereo CD/Radio with MP3 player AUX socket
- Power rear door and window child locks
- Human Machine Interface

*Note: A child seat should never be placed on the front passenger seat when the Ford vehicle is equipped with an operational front passenger's airbag. The safest place for children is properly restrained on the second-row seats.

Note The Bluetooth® word mark and logos are owned by the Bluetooth SIG, Inc. and any use of such marks by Ford Motor Company Limited and its associated companies is under licence. Other trademarks and trade names are those of their respective owners.

Image above: Model shown is a Ford Galaxy Zetec with Hypnotic Silver metallic paint (option) and Solar Reflect windscreen (option). Image opposite: Model shown is a Ford Galaxy Zetec with Daphne in Silver interior and cruise control (with Adjustable Speed Limiting Device (ASLD)) (Option).

Electrically-operated and heated door mirrors with body colour housings and side indicators
(Standard)

Silver-finish integrated roof rail system for sliding crossbars
(Silver-finish integrated roof rail system is standard and the sliding crossbars are an option or available from your Ford Dealer as an accessory)

Ford Easy-Fuel capless refuelling system
(Standard)

Air conditioning with Dual-zone Electronic Automatic Temperature Control (DEATC)
(Standard)

Centre console with stowage bin, hinged armrest and two cup holders
(Standard)

Human Machine Interface (HMI) toggle controls
(Standard)





Titanium



The new Titanium is the most exciting Ford Galaxy yet, perfectly combining contemporary luxury with the latest innovative technology.

Additional to Zetec

- 17" 5x2-spoke alloy wheels
- Dark Privacy glass to rear windows
- 'Ford Power' starter button
- Automatic headlights, rain sensing front windscreen wipers and auto dimming rear view mirror
- Sony DAB Radio/CD audio system with USB/MP3/iPod® connectivity port
- Full-length overhead console with stowage compartments, sunglasses holder and child observation mirror
- Sports-style front seats
- Cruise control with Adjustable Speed Limiting device
- Solar Reflect windscreen
- Ford Convers+ premium instrument cluster with colour display
- Air conditioning with DEATC and rear compartment cooling
- Chrome finish to front grille, doorline, bodyside mouldings, door and tailgate handles
- Front footwell illumination
- Brushed metal door spears and instrument panel inserts
- Soft-feel leather trimmed steering wheel
- Luxury woven headliner
- Piano Black centre console
- Front and rear carpet velour floor mats
- Luggage area floodlights
- Brushed stainless steel front door scuff plates

Image above: Model shown is a Ford Galaxy Titanium with Panther Black metallic paint (option) and Touchscreen Navigation PLUS system (option).

Image opposite: Model shown is a Ford Galaxy Titanium with Vector cloth seats and Premium Sound System (option).

Sports-style front seats
(Standard)

17" 5x2-spoke alloy wheels
(Standard)

Ford Convers+ colour instrument cluster display
(Standard)

Rear privacy glass
(Standard)

Brushed metal door spear and instrument panel insert-finish
(Standard)

Front footwell illumination
(Standard)





Titanium X



Refined luxury and ingenious features come together beautifully in the Ford Galaxy Titanium X

Additional to Titanium

- Panorama roof with integrated sunblinds
- Premium Windsor leather seats with a choice of dark ebony or biscuit trim
- Comfort-style front seats
- Bi-Xenon HID headlights
- Electrically operated rear quarter vents
- Wood effect instrument panel and door spears

Image above: Model shown is a Ford Galaxy Titanium X with Parkside metallic paint. (Option)
 Image opposite: Model shown is a Ford Galaxy Titanium X with Windsor leather in Dark Ebony interior, variable climate (heated/cooled) control front seats (option), and Sony Audio with Premium Sound System. (Option)

Electrically-operated and heated door mirrors with side indicator and puddle lights
 (Standard)

Chrome-trimmed upper and lower front grilles
 (Standard)

17" 5x2-spoke alloy wheels
 (Standard)

Auto-dimming rear-view mirror
 (Standard)

Automatic headlights and autowipers with rain sensor
 (Standard)

Full-length overhead console with child observation mirror
 (Standard)





The range

Zetec

Key features include:

- 16" 5x2-spoke alloy wheels
- Bluetooth® and Voice Control
- Quickclear heated front windscreen
- Front fog lights, LED rear lights
- Front and rear park assist
- Power rear door and window child locks
- Thatcham Approved Alarm
- Electrically-operated and heated door mirrors
- Electrically operated windows
- Seven individual seats with Ford Fold Flat System (FFS)
- Folding tray on driver and passenger seatback
- Full-length centre console
- Air conditioning with Dual-zone Electronic Automatic Temperature Control (DEATC)
- Ford Easy-Fuel capless refuelling
- Stereo CD/Radio with MP3 player AUX
- ISOFIX attachments for child seat (on all three 2nd row seats)

Bodystyle: 5-door

Engines

- **Petrol**
1.6 EcoBoost SCTi (160 PS) with Auto-Start-Stop
- **Diesel**
1.6 Duratorq TDCi (115 PS) with Auto-Start-Stop
2.0 Duratorq TDCi (140 PS)

Titanium

Additional to Zetec:

- 17" 5x2-spoke alloy wheels
- Rear privacy glass
- 'Ford Power' starter button
- Automatic headlights and autowipers with rain sensor
- Sony CD and DAB audio with USB connectivity port
- Full-length overhead console
- Cruise control
- Adjustable Speed Limiting Device
- Solar Reflect windscreen
- Ford Convers+
- Air conditioning with DEATC and rear compartment cooling
- Chrome finish to front grille, doorline, door and tailgate
- Front & rear floor carpet mats

Bodystyle: 5-door

Engines

- **Petrol**
1.6 EcoBoost SCTi (160 PS) with Auto-Start-Stop
2.0 EcoBoost SCTi (203 PS)**
- **Diesel**
1.6 Duratorq TDCi (115 PS) with Auto-Start-Stop
2.0 Duratorq TDCi (140 PS)
2.0 Duratorq TDCi (163 PS)
2.2 Duratorq TDCi (200 PS)

Titanium X

Additional to Titanium:

- Panorama roof with integrated sunblinds
- Premium Windsor leather comfort seats, with a choice of dark ebony or biscuit trim
- Bi-Xenon HID headlights
- Electrically operated rear quarter vents
- Wood effect instrument panel and door spears

Bodystyle: 5-door

Engines

- **Petrol**
1.6 EcoBoost SCTi (160 PS) with Auto-Start-Stop
2.0 EcoBoost SCTi (203 PS)**
- **Diesel**
1.6 Duratorq TDCi (115 PS) with Auto-Start-Stop
2.0 Duratorq TDCi (140 PS)
2.0 Duratorq TDCi (163 PS)
2.2 Duratorq TDCi (200 PS)



*Note: A rear-facing child seat should never be placed on the front passenger seat when the Ford vehicle is equipped with an operational front passenger's airbag. The safest place for children is properly restrained on the second-row seats.

Note: Please refer to Specification section for full technical features, transmission types, and performance and emissions data.

Note: The Bluetooth® word mark and logos are owned by the Bluetooth SIG, Inc. and any use of such marks by Ford Motor Company Limited and its associated companies is under licence. Other trademarks and trade names are those of their respective owners.

*Includes Auto-Start-Stop as a standard feature.

**Only available as PowerShift 6-speed automatic.



Each distinctive wheel enhances Ford Galaxy's sleek design.

Wheels

For added safety in the event of a puncture, opt for the innovative optional runflat tyres with Tyre Pressure Monitoring System, available with 17" 5x2-spoke alloy wheels).

Left image:
18" 12-spoke Y-design Sparkle Silver-painted finish alloy wheel
 (Accessory)

Standard = Standard on your vehicle.
Option = Can be ordered with your new vehicle.
Accessory = All alloy wheels are available from your Ford Dealer as an accessory.

Note The 18" wheels available on Ford Galaxy are designed to deliver more sporting driving characteristics and a firmer ride quality compared to standard 16" and 17" wheels.
 *Only with ESP

Scuff plates
 An elegant way to protect your paint finish (Accessory).



16" 5x2-spoke sparkle silver-painted alloy wheel
 (Standard on Zetec; also available as an accessory)

16" 5x3-spoke sparkle silver-painted alloy wheel
 (Accessory)



Ford Individual 17" 5-spoke Sparkle Silver-painted finish alloy wheel
 (Accessory)

17" 5-spoke sparkle silver/front machined alloy wheel
 (Accessory)
 Also available in sparkle silver-painted finish

17" 5x2-spoke alloy wheel
 (Standard on Titanium and Titanium X; option and accessory)

17" 9-spoke anthracite/front machined alloy wheel
 (Accessory)

17" 15-spoke sparkle silver-painted alloy wheel
 (Accessory)

18" 5-spoke alloy wheel*
 (Option and accessory)

Ford Individual 18" 5-spoke Sparkle Silver-painted finish alloy wheel*
 (Accessory)
 Also available in Mystique Silver-painted finish*

18" 5-spoke Y-design anthracite/'front machined' alloy wheel*
 (Accessory)



Ford Individual Rear Seat Entertainment System

Features a built-in DVD player with two independently-operated LCD 7" screens, remote control and two wireless headphones. So even your more demanding passengers can enjoy movies and computer games (Option on Titanium and Titanium X; this option also includes the Ford Key-free system). An additional third wireless headphone is available as an accessory.

Toggle controls

Steering wheel-mounted toggle controls let you operate the audio system and trip computer without taking your hands off the wheel.



Travel far and wide. But never give up your home comforts.

Sound and vision

Premium Sound System

This is the ultimate in Ford Galaxy sound, featuring an 8-channel amplifier and superior quality speakers, including a facia-mounted tweeter and a concealed sub-woofer for the best possible sound reproduction.

(Option on Titanium and Titanium X only with Sony DAB audio system)

RDS TMC Traffic Information System

Reduce your time spent in traffic jams with the new RDS TMC Traffic Information Service. Using data gathered by roadside sensors, it extends the performance of your navigation system by allowing it to use live information to calculate an alternative route and avoid traffic congestion.



Note The Bluetooth® word mark and logos are owned by the Bluetooth SIG, Inc. and any use of such marks by Ford Motor Company Limited and its associated companies is under licence. Other trademarks and trade names are those of their respective owners. Bluetooth® connectivity and audio streaming and MP3 compatibility with certain mobile phones/devices. Contact your Ford Dealer for further details. Note It is an offence for drivers to use a hand-held mobile phone or similar device while driving.

6000 radio/CD/MP3 Audio system
(Standard on Zetec)

This stereo radio/CD/MP3 player features 'Keycode' anti-theft coding, RDS EON, 24 programmable stations. Remote control functionality via the left steering wheel toggle switch. Includes AUX connection for external music devices.

Touchscreen Navigation with DAB radio/CD Audio system

Featuring a 7" touchscreen with colour map and turn-by-turn instructions to your destination which are also displayed in the instrument cluster. Includes USB connectivity for your iPod® or MP3 device. Includes full Western Europe mapping data on SD card.

Bluetooth® audio streaming and MP3 compatibility with certain mobile phones/devices (Option on Zetec).

Touchscreen Navigation PLUS with DAB radio/CD Audio system with rear-view camera

A 7" colour touchscreen with rear-view camera, colour map and turn-by-turn instructions to your destination which are also displayed in the instrument cluster. Includes USB connectivity for your iPod® or MP3 device. Includes full Western Europe mapping data on SD card, premium speakers and chrome switch detailing that perfectly matches the premium interior. Bluetooth® audio streaming and MP3 compatibility with certain mobile phones/devices (Option on Titanium & Titanium X).

Sony DAB Radio/CD audio system with USB connectivity port

Sony DAB audio system featuring Programme Type (PTY) and Digital Sound Processing, the Sony DAB CD stereo radio/CD/MP3 player has 40 programmable stations, premium speakers and a USB connectivity port.

(Standard on Titanium and Titanium X; option on Zetec)
Bluetooth® audio streaming compatible with certain mobile phones.

Bluetooth® with Voice Control System

Standard on all Galaxy, this system enables you to make hands-free mobile phone calls (mobile phone not included), while the Voice Control System technology lets you control your Bluetooth® compatible mobile phone, audio, Touchscreen navigation (where specified) and air conditioning systems with the sound of your voice.

(Image below shows Sony DAB system, which is an option on Zetec, standard on Titanium & Titanium X)

Ford Convers+ colour instrument cluster display

This advanced instrumentation provides an exceptional interface between you and your car, with high quality, easy-to-read graphics on a 5" colour TFT screen.

It allows you to control the radio, CD player, MP3 and your Bluetooth®-enabled mobile phone (mobile phone not included).

(Standard on Titanium and Titanium X)



Thule® roof box*

Different sized boxes protect your luggage from weather and theft. A selection of Thule roof boxes is available as accessories in conjunction with **crossbars**. (Crossbars are available as an option and accessory). Model shown is the Thule Excellence 900.

ClimAir® wind deflector*

Reduces turbulence and noise, allowing you a more enjoyable drive with the windows down, even during light rain. (Accessory, for front windows)



Your Ford Galaxy will soon become your individual space for family transport and leisure. We believe in freedom of choice.

Personalise

1. Roof rail system with sliding crossbars

Stylish silver-finish roof rail system adds a sleek new dimension to roof transportation. Slide the crossbars to the rear of the roof when their sturdy load-carrying abilities are not needed to highlight the elegant lines of your Ford Galaxy. (Crossbars are available as an option and accessory)

3. Britax Römer® child seat*

Provides optimum all-round protection and comfort. Various child seats are available for all ages, also with ISOFIX. Removable and washable cover. (Accessory)

5. Scuff plates with 'Galaxy' script

Polished stainless steel scuff plates with 'Galaxy' script welcome you onboard. (Accessory)

2. Contoured mudflaps

Available as sets for front and rear, these practical hard-wearing mudflaps protect the bodywork from stone chips, helping to keep your Ford Galaxy clean by reducing road spray. (Accessory)

4. Premium velour carpet floor mats and rubber mats

Luxurious velour mats made to complement your chosen interior. Driver's mat is fixed to prevent slippage. (Accessory). Rubber mats are also available. (Accessory).

6. Retractable Tow bar

Available as an option or accessory; or fixed tow bars (accessory) expand your transport and leisure facilities.



*Meets European ECE-R17.07/DIN 75410-2 safety requirements
+Please see back cover for warranty information.

Load Protection
The retractable tonneau cover (standard) keeps items away from prying eyes and can be removed when not required. The load barrier prevents items rolling out of the luggage compartment while the load protection net keeps items securely in the luggage compartment. (Accessory)

Activity Kit
Series of aluminium bars and special attachments allow items to be securely locked in place. (Accessory) Interior bike carrier fixings for coolbox and skis are available separately as accessories.

Load retention net
This durable retention net helps prevent loads moving forward into the passenger compartment whilst driving, especially under sudden braking. Can be ordered for fitment behind the first and second row of seats. (Accessory)*

Load retention guard
Full-height dog guard keeps dogs or items of luggage safely in the luggage compartment (removable when not in use). For fitment either behind the 2nd or the 1st row of seats. (Accessory)

Thule® XTENDER ski/snowboard carrier*
Innovative, fully-lockable ski carrier suitable for up to six pairs of skis or four snowboards. Comfortable slide-out function for easy access to your ski equipment. (Accessory)

Tow bar, retractable
Galaxy's sturdy tow bar is there when you need it, but can be tucked away out of sight for uncompromised styling and easier access to the loadspace. Release it by turning the operating wheel and then retract it with a swift and easy action. (Option and accessory)



Your new Ford Galaxy

We have developed a simple three-step plan to help you choose, finance and drive your new Ford Galaxy.

Bodystyle:	Series:
Engine:	
Transmission:	
Colour:	
Trim:	
Wheels:	
Audio:	
Options:	
Option Packs:	
Accessories:	
Finance:	

** Finance subject to status. Guarantee/indemnities may be required. Freepost Ford Credit.

[^]Ford Lease is provided by ALD Automotive Ltd, trading as Ford Lease, Oakwood Park, Lodge Causeway, Fishponds, Bristol, BS16 3JA. ALD Automotive is registered in England No. 987418. For the purposes of the Data Protection Act 1998 the data controllers in relation to any information you supply are Ford Motor Company Limited, FCE Bank plc and ALD Automotive. Finance subject to status. Guarantees and indemnities may be required. ALD Automotive is authorised and regulated by the Financial Conduct Authority in respect of general insurance products.

Choose

Use the form opposite to specify your new car right down to the wheels, audio, options and accessories, then take it to your Ford Dealer.

You can also specify your new car online using the Ford Configurator. It lets you instantly see what your car will look like – inside and out – from multiple angles. And a tally of your choices and their prices helps you keep to your budget.

Visit www.ford.co.uk/SBE/ConfigureYourVehicle

Finance

When it comes to financing your car, our size and expertise means we're well placed to provide you with a wide range of finance products.

Ford Credit** provides straightforward finance products for your car whether you are a private or business user.

Ford Lease[^] provides simple tailored funding solutions for your business. Business users only

For more information about our finance products visit ford.co.uk

Drive

When you drive away in your new car, we're with you all the way. Ford has the largest authorised service network in the UK to help you keep your car in the best condition.

And should your new Ford ever require accident repair, a Ford Accident Repair Centre is the best place to get your car back to its pre-accident condition and on the road as quickly as possible.

Contact

Ford Credit Customer Services 0845 712 5490
Ford Lease Customer Services 0844 600 1405

To configure your Ford online visit
www.ford.co.uk/SBE/ConfigureYourVehicle
To look at finance for your Ford visit
www.fordcredit.co.uk/BuyingAndProtectingYourFord
Business users visit www.ford.co.uk/FordForBusiness



Exterior equipment

	Zetec	Titanium	Titanium X
Design features			
Door mirrors – Body colour housing, heated, electrically operated, integrated side indicator	●	-	-
Door mirrors – Body colour housing, heated, electrically operated, integrated side indicator, puddle lights	-	●	●
Door mirrors – Puddle lights and electrically foldable (electrically foldable door mirrors also available with Seat Pack and Blind Spot Information System)	○/□	○/□	○/□
Door mirrors – Blind Spot Information System (includes power folding door mirrors)	○	○	○
Front fog lights	●	●	●
Front lower grille – Painted with black bars	●	-	-
Front lower grille – Painted with chrome bars	-	●	●
Front upper grille – Painted with chrome bars and chrome finish surround (black bars in combination with Adaptive Cruise Control ACC)	●	●	●
Privacy glass for rear windows	○	●	●
Fixed panorama roof (includes 2nd row and 3rd row integrated roof sunblinds, full length overhead console, child observation mirror and illuminated sunvisor vanity mirrors)	○	○	●
Exhaust – Single, downward (excluding 2.0 EcoBoost engine)	●	●	●
Exhaust – Dual downward (only available with 2.0 EcoBoost and 2.2 Duratorq TDCi engines)	-	●	●
Bright finish on upper doorline (excluding door mirror triangle)	-	●	●
Bright finish on bodyside mouldings and tailgate handle	-	●	●
Integrated roof rails for sliding cross bars (anodised aluminium)	●	●	●
Sliding cross bars for integrated roof rails	○	○	○
Towbar – Retractable (including 13-pin electrical kit)	○	○	○
Wheels			
Alloy – 16"x6.5, 5x2-spoke, silver painted, 215/60 tyres	●	-	-
Alloy – 17"x7, 5x2-spoke, silver painted, 225/50 tyres	○	●	●
Alloy – 18"x8, 5-spoke, silver painted, 235/45 tyres	-	-	○
Alloy – 17"x7, 5x2-spoke, silver painted, 225/50 Runflat Tyres [†]	○	○	○
Tyre mobility kit	●	●	●
Locking wheel nuts (only available with alloy wheels)	●	●	●
Tyre Pressure Monitoring	○/□	○/□	○/□
Convenience features			
Ford Easy-Fuel capless refuelling system with misfuel inhibitor	●	●	●
Headlights – Automatic (also available as part of Solar Reflect Windscreen)	□	●	●
Headlights – Bi-Xenon High Intensity Discharge (HID) headlights with static cornering lights (includes fixed Xenon headlights, automatic headlight levelling and jet wash)	-	○	●
Headlights – Courtesy delay	●	●	●
Parking distance sensors – Front and rear	●	●	●
Rear-view parking camera (only available with Touchscreen Navigation PLUS system)	-	□	□
Tailgate wash/wipe	●	●	●
Wipers – Front, variable intermittent with electric wash	●	-	-
Wipers – Automatic with rain sensor (also available as part of Solar Reflect windscreen)	□	●	●
Front Windscreen – Quickclear heated, with heated washer jets	●	●	●
Front Windscreen – Solar Reflect heat reflecting (Includes automatic headlights and rain sensing wipers when ordered as option on Zetec)	○	●	●
Rear Windscreen – Heated	●	●	●
Option packs			
Seat Pack – Driver's 8-way power seat with memory and passenger's 8-way power adjustment with adjustable lumbar support, electrically foldable door mirrors.	○	○	○
Driver Assistance Pack 1 (Blind Spot Information System and Lane Departure Warning system with Driver Alert, Auto High/Low Beam. On Zetec this pack also adds Convers+ colour instrument cluster)	○	○	○
Driver Assistance Pack 2 (Blind Spot Information System and Lane Departure Warning system with Driver Alert, Auto High/Low Beam, Adaptive Cruise Control (ACC) with Forward Alert (FA))	-	○	○
Space Pack – Manual sunblinds in rear doors and load protection net	○	○	○

● = Standard, ○ = Optional, at extra cost, □ = Part of option pack, at extra cost. [†]Runflat tyres include Tyre Pressure Monitoring System (TPMS).

Interior equipment

	Zetec	Titanium	Titanium X
Design features			
A-pillar – Cloth covered	●	●	●
B/C-pillar – Cloth covered (only on Zetec in combination with panorama roof)	□	●	●
Door lever – Chrome finish	●	●	●
Floor mats – Front carpet	●	●	●
Floor mats – Rear carpet (available on Zetec as accessory)	–	●	●
Gearshift knob – Leather	●	●	●
Headliner – Woven (only on Zetec in combination with panorama roof)	○	●	●
Scuff plates – Front, brushed stainless steel with Ford oval	–	●	●
Steering wheel – 4-spoke, leather-wrapped	●	–	–
Steering wheel – 4-spoke, leather-wrapped, soft feel	–	●	●
Steering wheel – Rake and reach-adjustable	●	●	●
Audio and communication systems			
Bluetooth® Voice Control System for the command of audio system, air conditioning and compatible mobile phones*	●	–	–
Bluetooth® Voice Control System with USB/iPod® connectivity port for the command of audio system, air conditioning and compatible mobile phones*	□	●	●
Ford 6000 Radio/CD audio System with 10 speakers, remote audio controls, MP3 compatible, AUX connection for external music device	●	–	–
Sony DAB Radio/CD audio System with USB/iPod® connectivity port, 11 speakers, remote audio controls, external AUX connection for external music devices, and Bluetooth® audio streaming with compatible mobile phones*	○	●	●
Touchscreen Navigation System with DAB Radio/CD, a 7" colour touchscreen, USB/iPod® connectivity port, 10 speakers, remote audio controls, MP3 compatible, navigation data on integrated SD card (UK and Western Europe), TMC, AUX connection for external music device. Touchscreen allows control of radio/CD, navigation system, dual electronic air conditioning and Bluetooth® audio streaming with compatible mobile phones*	○	–	–
Replaces standard specification audio system when ordered			
Touchscreen Navigation PLUS System with DAB Radio/CD, a 7" colour touchscreen, Rear view camera, USB/iPod® connectivity port, 11 speakers, remote audio controls, MP3 compatible, navigation data on integrated SD Card (UK and Western Europe), TMC, AUX connection for external music device. Touchscreen allows control of radio/CD, navigation system, dual electronic air conditioning and Bluetooth® audio streaming with compatible mobile phones* Replaces standard specification audio system when ordered	–	○	○
Ford Individual Rear Seat Entertainment (DVD, Multimedia) system – DVD player located under front passenger's seat, two LCD screens integrated in the front head restraints, with infra red remote control and two infra red headphones (a third headphone is available as an accessory). Includes keyless entry. Note: This option is not available with front seat driver/passenger stowage	–	○	○
USB/MP3/iPod® connectivity port (not available with Ford 6000 Radio/CD – requires Sony DAB Radio/CD, Touchscreen Navigation system or Touchscreen Navigation PLUS system)*	□	●	●
Remote audio controls (located on steering wheel)	●	●	●
Climate control			
Air conditioning – CFC-free with Dual Electronic Automatic Temperature Control (DEATC)	●	–	–
Air conditioning – CFC-free with Dual Electronic Automatic Temperature Control (DEATC) and rear compartment heater	–	●	●

Equipment

Interior equipment

	Zetec	Titanium	Titanium X
Comfort and convenience			
'Ford Power' starter button (includes 2 remote keys)	–	●	●
Cruise control (includes Adjustable Speed Limiting Device (ASLD))	○	●	●
Accessory power socket (12V) – Front	●	●	●
Accessory power socket (12V) – One socket located in the rear	●	●	●
Centre console – Includes stowage bin, hinged armrest, two moulded cup holders	●	●	●
Centre console – Overhead, short, with sunglasses holder (not available with fixed panorama roof)	●	–	–
Centre console – Overhead, full length, with stowage bin and child observation mirror	○	●	●
Courtesy light – For front passengers, overhead with delayed switch-off	●	●	●
Courtesy light – Front and rear (2nd row) reading lights	●	●	●
Courtesy light – Footwell area, submarine lighting, and light in load compartment	–	●	●
Courtesy lights – Rear (2nd and 3rd row) overhead, rear (2nd row) reading lights and, on Titanium and Titanium X, 3rd row reading lights	●	●	●
Courtesy lights – Illuminated entry system (courtesy lights and door mirror puddle lights, if fitted, illuminate when vehicle unlocked)	●	●	●
Rear-view mirror – Auto-dimming (electrochromic)	–	●	●
Child observation mirror, located in overhead console (only available with full length overhead console)	○	●	●
Stowage trays – Front driver's and passenger's underseat foot area (not available with Ford Individual Rear Seat Entertainment System)	–	●	●
Windows – Electrically-operated, front and rear, with one-touch lowering/closing, anti-trap feature and global opening/closing	●	●	●
Windows – Rear, electrically operated opening quarter vents (only available with privacy glass)	–	○	●
Seats and seat belts			
Front seats – Sports style	–	●	–
Front seats – Comfort-style (on Titanium only available when ordered with optional Windsor premium leather trim)	●	○	●
Front seat – Driver's manual lumbar support adjustment	●	●	●
Front seat – Driver's electric height adjustment	●	●	●
Front seat – Driver's electric height, fore/aft, backrest angle and tilt adjustment with memory (includes memory exterior mirror and lumbar support adjustment)	□	□	□
Front seat – Passenger's manual lumbar support adjustment	●	●	●
Front seat – Passenger's electric height adjustment	□	□	□
Front seats – Height-adjustable head restraints	●	–	–
Front seats – Fully-adjustable head restraints	–	●	●
Front seats – Variable Heated cushion and seatback, with variable control#	○	○	○
Front seats – Variable Climate (heated/cooled) cushion and seatback with variable control#	–	○	○
Seat back trays – Folding	●	●	●
Seats – Windsor premium leather trimmed#	–	○	●
Rear seats – Three 2nd row individual fold-flat seats with height-adjustable head restraints	●	●	●
Rear seats – 2nd row easy entry tip and slide system	●	●	●
Rear seats – Two 3rd row individual fold-flat seats with height-adjustable head restraints	●	●	●
Loadspace			
Load retention net (available as an accessory)	○	○	○
Tie-down hooks	●	●	●
Tonneau Cover (behind second row seat, covers the third row seating (when folded) and boot stowage area)	●	●	●

● = Standard, ○ = Optional, at extra cost, □ = Part of an option pack, at extra cost. The Bluetooth® word mark and logos are owned by the Bluetooth SIG, Inc. and any use of such marks by Ford Motor Company is under license. Other trademarks and trade names are those of their respective owners.

*To check Bluetooth®-enabled phone or MP3 player compatibility please visit www.ford.co.uk.

#When Windsor leather trim is specified with optional Variable Heated/Climate control seats, the Windsor leather front seats are perforated.

Safety and security

	Zetec	Titanium	Titanium X
Safety			
Intelligent Protection System (IPS)	●	●	●
Anti-lock braking system (ABS) with electronic brake-force distribution (EBD)	●	●	●
Emergency Brake Warning – Automatic flashing of brake lights under heavy braking	●	●	●
Electronic Stability Programme (ESP) with Traction Assist (includes Emergency Brake Assist (EBA))	●	●	●
Adaptive Cruise Control (ACC) with Forward Alert (FA) and Enhanced Electronic stability Programme (ESP)	–	○	○
Lane Departure Warning system with driver impairment monitoring (includes automatic high/low headlight beam) and Adjustable Speed Limiting Device (ASLD).	–	□	□
Electric Parking Brake (EPB)	○	○	○
Hill Start Assist (standard in combination with Adaptive Cruise Control (ACC) or PowerShift Automatic)	○	○	○
Airbags – Driver's and front passenger's*	●	●	●
Airbags – Front side impact	●	●	●
Airbags – Front, 2nd and 3rd row curtain	●	●	●
Airbags – Driver's knee bolster airbag	●	●	●
Airbag – Front passenger's deactivation switch (Dealer-fit option)	○	○	○
Security			
Remote central/double locking	●	●	●
Power rear door and window child locks	●	●	●
Thatcham Category 1 perimeter and volume sensing alarm	●	●	●
Keyless entry	–	○/□	○/□

● = Standard, ○ = Optional, at extra cost, □ = Part of an option pack, at extra cost

*Note: A rear-facing child seat should never be placed in the front passenger seat, when the Ford vehicle is equipped with an operational front passenger's airbag. The safest place for children is properly restrained on the second row seats.

Mechanical features

	Zetec	Titanium	Titanium X
Steering			
Electronic Power Assisted Steering (EPHAS)	●	●	●
Suspension and body			
Front – Independent with MacPherson struts and anti-roll bar	●	●	●
Rear – Independent Control Blade multi-link system and anti-roll bar	●	●	●
Technology			
Auto-Start-Stop (only available with 1.6 160PS EcoBoost and 1.6 115PS Duratorq TDCi engine)	●	●	●
Ford Eco Mode (Driver information system)	●	●	●

● = Standard, ○ = Optional, at extra cost.

Insurance groups

	Zetec	Titanium	Titanium X
1.6 EcoBoost SCTi (160 PS), 6-speed manual with Auto-Start-Stop	18E	18E	–
2.0 EcoBoost SCTi (203 PS), PowerShift 6-speed automatic	–	24E	25E
1.6 Duratorq TDCi (115 PS) with Auto-Start-Stop	16E	17E	18E
2.0 Duratorq TDCi (140 PS)	20E	20E	21E
2.0 Duratorq TDCi (140 PS), PowerShift 6-speed automatic	20E	20E	21E
2.0 Duratorq TDCi (163 PS)	–	22E	23E
2.0 Duratorq TDCi (163 PS), PowerShift 6-speed automatic	–	22E	23E
2.2 Duratorq TDCi (200 PS), 6-speed manual	–	26E	27E
2.2 Duratorq TDCi (200 PS), Durashift 6-speed automatic	–	26E	27E

E = Exceeds security requirement.

Fuel and performance

	Emission Level	Trans	Maximum Power PS (kW)	Torque Nm	CO ₂ emissions (g/km) ⁹⁹	Fuel consumption in L/100 km (mpg) ⁹⁸			Performance*		
						Urban	Extra Urban	Combined	Max. speed (mph)	0-62 mph (secs)	31-62 mph* (secs)
1.6 EcoBoost with Auto-Start-Stop	Stage V	M6	160 (118)	240	167	9.1 (31.0)	6.1 (46.3)	7.2 (39.2)	125	9.9	10.0
2.0 EcoBoost	Stage V	MPS6	203 (149)	300	189	11.0 (25.7)	6.4 (44.1)	8.1 (34.9)	135	8.8	n/a
1.6 Duratorq TDCi with Auto-Start-Stop	Stage V + DPF	M6	115 (85)	270	139	5.9 (47.9)	4.9 (57.7)	5.2 (54.3)	111	13.4	12.2
2.0 Duratorq TDCi	Stage V + DPF	M6	140 (103)	320	139	6.5 (43.5)	4.7 (60.1)	5.3 (53.3)	120	10.6	9.9
2.0 Duratorq TDCi	Stage V + DPF	MPS6	140 (103)	320	149	6.8 (41.5)	5.0 (56.5)	5.7 (49.6)	118	11.1	n/a
2.0 Duratorq TDCi	Stage V + DPF	M6	163 (120)	340	139	6.5 (43.5)	4.7 (60.1)	5.3 (53.3)	126	9.8	9.7
2.0 Duratorq TDCi	Stage V + DPF	MPS6	163 (120)	340	149	6.8 (41.5)	5.0 (56.5)	5.7 (49.6)	124	10.4	n/a
2.2 Duratorq TDCi	Stage V + DPF	M6	200 (147)	420	179	8.4 (33.6)	5.8 (48.7)	6.8 (41.5)	134	8.8	7.4
2.2 Duratorq TDCi	Stage V + DPF	D6	200 (147)	420	189	9.4 (30.1)	5.8 (48.7)	7.1 (39.8)	130	9.1	n/a

Transmissions: M6 = 6-speed manual, MPS6 = PowerShift Dual Clutch Automatic 6-speed, D6 = Durashift 6-speed Automatic. *In 4th gear.

⁹⁸= Ford test figures, ⁹⁹= The declared fuel consumptions and CO₂ emissions are measured according to the technical requirements and specifications of European Directive 80/1268/EEC or the European Regulation (EC) 715/2007 as amended by (EC) 692/2008.

Fuel consumption and CO₂ emissions are specified for a vehicle type and not for a single car. The applied standard test procedure enables comparisons between different vehicle types and different manufacturers.

In addition to the fuel efficiency of a car, driving behaviour as well as other non-technical factors are very important in determining a car's fuel consumption and CO₂ emissions. CO₂ is the main greenhouse gas responsible for global warming.

A guide on fuel economy and CO₂ emissions which contain data for all new passenger car models is available at any point of sale free of charge or can be downloaded from <http://carfueldata.dft.gov.uk/>.

Weights and loads

	Kerbweight (kg) [†]	Gross Vehicle Mass (kg)	Gross Train Mass (kg)	Max. Towable Mass (braked) (kg)	Max. Towable Mass (unbraked) (kg)
1.6 EcoBoost SCTi, (160PS) 6-speed manual with Stop-Start	1734	2460	4060	1600	750
2.0 EcoBoost SCTi, (203PS) PowerShift 6-speed automatic	1727	2450	3950	1500	750
1.6 Duratorq TDCi (115PS) 6-speed manual with Stop-Start	1734	2470	3870	1400	750
2.0 Duratorq TDCi (140PS) 6-speed manual	1733	2505	4305	1800	750
2.0 Duratorq TDCi (140PS), PowerShift 6-speed automatic	1731	2505	4305	1800	750
2.0 Duratorq TDCi (163PS) 6-speed manual	1733	2505	4305	1800	750
2.0 Duratorq TDCi (163PS), PowerShift 6-speed automatic	1731	2505	4305	1800	750
2.2 Duratorq TDCi (200PS), 6-speed manual	1840	2505	4305	1800	750
2.2 Duratorq TDCi (200PS), 6-speed automatic	1841	2505	4505	2000	750

[†]Represents the lightest kerbweight assuming driver at 75 kg, full fluid levels and 90% fuel levels, subject to manufacturing tolerances and options, etc., fitted. **Towing limits** quoted represent the maximum towing ability of the vehicle at its Gross Vehicle Mass to restart on a 12 per cent gradient at sea level. The performance and economy of all models will be reduced when used for towing. **Nose weight limit** is a maximum of 90 kg on all models. **Gross Train Mass** includes trailer weight.

Dimensions

Overall length with/without towbar	4921/4820
Overall width with/without mirrors	2154/1884
Overall height (unladen)	1764-1807
Turning circle – kerb to kerb (m)	11.9
Luggage capacity (litres)[†]	
7-seat mode (laden to top of seat) (min./max.)	308/435
5-seat mode (laden to roof) (nominal/max.)	1130/1260
2-seat mode (laden to roof)	2325
Fuel tank capacity (litres)	
Petrol	70
Diesel	70

[†]Measured in accordance with ISO 3832. Dimensions may vary dependent on the model and equipment fitted.

Ford Warranty and Servicing Plans

	All Galaxy Models
3 years/60,000 miles* Ford Protect Classic Warranty	●
1 year/unlimited miles* Ford Assistance Roadside Cover (UK and Europe)	●
2 years/2 services* or 3 years/3 services* Ford Protect Premium Plan, including scheduled servicing and extended Ford Assistance	○
1 year/unlimited miles* Paint Warranty	●
12 years/unlimited miles* Perforation Warranty	●

● = Standard. ○ = Optional, at extra cost.

*From the date of first registration. Subject to terms and conditions.

Colour and trim

Model	Zetec	Titanium	Titanium X		
Seat facing trim and colour	Daphne in Silver	Vector in Ebony	Windsor leather in Dark Ebony*	Windsor leather in Dark Ebony	Windsor leather in Biscuit
Seat bolster trim and colour	Twill in Ebony	Lux in Ebony	Windsor leather in Dark Ebony	Windsor leather in Dark Ebony	Windsor leather in Biscuit
Door trim insert and colour	Excelsior in Ebony	Excelsior in Ebony	Cuir vinyl in Ebony	Cuir vinyl in Ebony	Cuir vinyl in Biscuit
Door spear finish	Monofoil Silver	Chrome Brushed	Chrome Brushed	Mercury Wood	Mercury Wood
Instrument panel strip finish	Monofoil Silver	Chrome Brushed	Chrome Brushed	Mercury Wood	Mercury Wood
Instrument panel colour: Upper/Lower	Ebony/Ebony	Ebony/Ebony	Ebony/Ebony	Ebony/Ebony	Ebony/Biscuit
Solid body colours					
Blazer Blue	●	●	○	●	●
Frozen White*	○	○	○	○	-
Metallic body colours*					
Micastone	○	○	○	○	○
Midnight Sky	○	○	○	○	○
Deep Impact Blue	○	○	○	○	○
Lunar Sky	○	○	○	○	○
Panther Black	○	○	○	○	○
Moon dust Silver	○	○	○	○	○
Hypnotic Silver	○	○	○	○	○
Parkside	○	○	○	○	○
Ice White	○	○	○	○	-

● = Standard, ○ = Option, at extra cost. *Metallic paint, Frozen White paint are optional at extra cost. Galaxy Titanium X and Galaxy Titanium (with optional Windsor leather seats) come with perforated Windsor leather front seats when variable climate (heated/cooled) front seats option (at extra cost) is chosen.

Colour and trim

Make it yours.



Frozen White*
Solid body colour



Blazer Blue
Solid body colour



Parkside
Metallic body colour*



Midnight Sky
Metallic body colour*



Moondust Silver
Metallic body colour*



Hypnotic Silver
Metallic body colour*



Deep Impact Blue
Metallic body colour*



Panther Black
Metallic body colour*



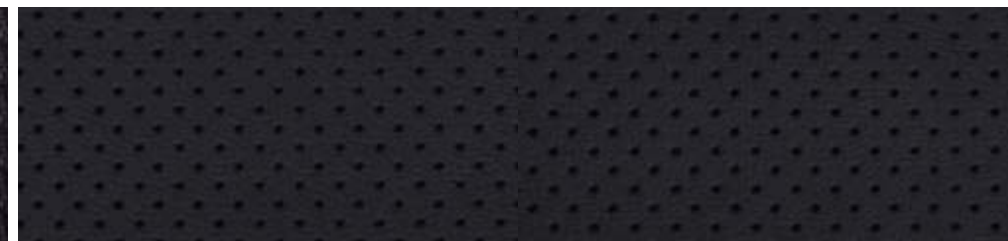
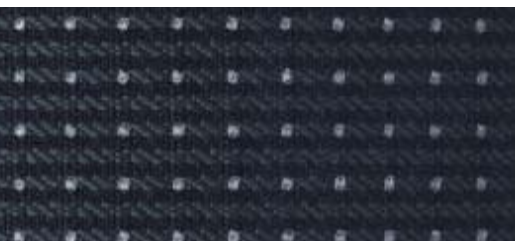
Micastone
Metallic body colour*



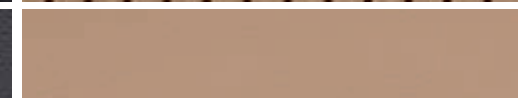
Lunar Sky
Metallic body colour*



Ice White
Special metallic body colour*



*Frozen White and Metallic and Special Metallic body colours are available at extra cost.
The Ford Galaxy is covered by the Ford Perforation Warranty for 12 years from the date of first registration. Subject to terms and conditions.
Note: The car images used are to illustrate body colours only and may not reflect current specification or product availability. Colours and trims reproduced within this brochure may vary from the actual colours, due to the limitations of printing processes used.
**Leather trims are options, at extra cost.



Zetec
Seat insert: Daphne fabric in Generic Silver
Seat bolster: Twill fabric in Ebony

Titanium
Seat insert: Vector fabric in Ebony
Seat bolster: Lux fabric in Ebony

Titanium
Seat insert: Windsor leather in Dark Ebony (front seats are perforated when optional variable heated or climate (heated/cooled) seats are selected)
Seat bolster: Windsor leather in Dark Ebony

Titanium X
Seat insert: Windsor perforated leather in Dark Ebony** (front seats are perforated when optional variable heated or climate (heated/cooled) seats are selected) Seat bolster: Windsor leather in Dark Ebony

Titanium X
Seat insert: Windsor perforated leather in Biscuit** (front seats are perforated when optional variable heated or climate (heated/cooled) seats are selected). Seat bolster: Windsor leather in Biscuit



MY 2014: GBR en

Illustrations, descriptions and specifications. This catalogue was correct at the time of going to print. However, Ford policy is one of continuous product development. The right is reserved to change specifications, colours and prices of the models and items illustrated and described in this publication at any time. For the latest details always consult your Ford Dealer. **Optional equipment.** Throughout this publication, wherever a feature is described as being an 'Option' or 'Option Fitment/Pack' etc, you should assume that it will be at extra cost to the base vehicle, unless specifically stated to the contrary. All models and colour combinations are subject to availability. **Note.** Some images portrayed are of a pre-production model and/or are computer generated, therefore, the design/features on the final version of the vehicle may differ in various respects. In addition, some of the features shown on the vehicles may be optional. **Note.** This brochure contains both original Ford accessories as well as a range of products from our suppliers. **†**The identified accessories are carefully selected third party supplier branded accessories which do not come with a Ford warranty but are instead covered by the third party supplier's own warranty, the details of which can be obtained from your Ford Dealer. **Note.** The Bluetooth® word mark and logos are owned by the Bluetooth SIG, Inc. and any use of such marks by Ford Motor Company is under licence. The iPod word mark and logos are the property of Apple Inc. Other trademarks and trade names are those of their respective owners. **Note.** Some driver assistance features and safety features described in this brochure are designed to function using sensors, whose performance may be affected under certain weather or environmental conditions.

The Government fuel figures do not express or imply any guarantee of the fuel consumption of any particular vehicle. The vehicles themselves have not been tested and there are inevitably differences between individual vehicles of the same model. In addition, a vehicle may incorporate particular modifications. Furthermore, the driver's style and road and traffic conditions, as well as the extent to which the vehicle has been driven and the standard of maintenance, will affect its fuel consumption. **Insurance groups** are only as recommended by the Association of British Insurers. You should always consult your insurance adviser for confirmation.



BY APPOINTMENT TO
HER MAJESTY THE QUEEN
MOTOR VEHICLE MANUFACTURERS
FORD MOTOR COMPANY LIMITED
BRENTWOOD ESSEX



BY APPOINTMENT TO
HIS ROYAL HIGHNESS THE PRINCE OF WALES
MOTOR VEHICLE MANUFACTURERS
FORD MOTOR COMPANY LIMITED
BRENTWOOD ESSEX



Ford and BP – working together to reduce fuel consumption and emissions.



Collect Nectar points at participating Ford Dealers and Authorised Repairers now. So take a look at the latest Ford Service Promotions by visiting the Owner Services section within www.ford.co.uk.



When you have finished with this brochure please recycle it.

Ford One Call

In the unlikely event that your Ford Dealer can't help you or if you need to speak to us directly, call 0203 564 4444

Ford Rental - local service nationwide

Car and Van rental from our latest model range. Contact your local Ford Dealer for more information

Ford Motability

Our dedicated care centre provides free information on all motoring and mobility issues, including special offers for HRDLA and Motability recipients. Call free on 0845 6040019

Finance

Ford Credit Customer Services 0845 712 5490
Ford Lease Customer Services 0844 600 1405

Published by Ford Motor Company Limited, Brentwood, Essex, England. Registered in England No. 235446.

FA 1505/13
BJN 202859. FoE H30E.
PN 378501/1213/GBR en
November 2013.

© Ford Motor Company Limited.

www.ford.co.uk