



TOYOTA

2021 Corolla Hatchback

2021 COROLLA HATCHBACK

Get into it.

Low to the ground and lightweight, the 2021 Toyota Corolla Hatchback will reintroduce you to the thrill of driving. Its sporty exterior highlights its practical five-door design, while the interior boasts all the latest tech. Plus, the available SE Nightshade Edition will speak to your sense of style. So, whether you're cruising through downtown tonight or going away for the weekend, Corolla Hatchback is ready for whatever's next.



XSE shown in Blue Flame with available accessory rear window spoiler and SE shown in Wind Chill Pearl.¹



See numbered footnotes in Disclosures section.

PERFORMANCE

Rev up your heartbeats per minute.

Corolla Hatchback's standard 2.0L Dynamic Force Engine releases endorphins the moment you step on the gas. With its low and lightweight body, Corolla Hatchback will punch up your enthusiasm around every curve. Rest assured, fast-paced fun is waiting for you the second you start the engine.

2.0L Dynamic Force Engine

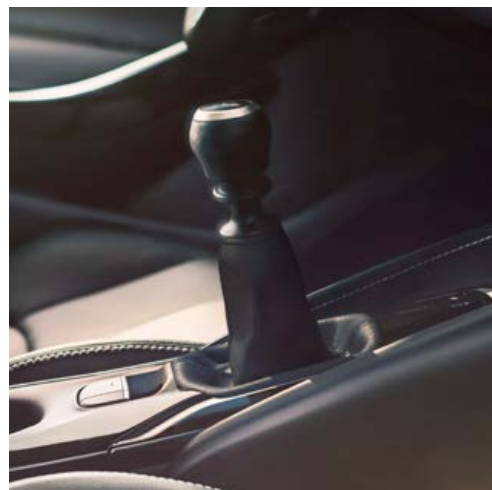
Under the hood, the efficient 2.0L Dynamic Force Engine punches up your adrenaline the moment you shift into drive. And you can hone your paddle-shifting skills with our Dynamic-Shift CVT.

Optimized suspension

Wring more excitement out of every corner. Corolla Hatchback's optimized suspension helps reduce body roll, keeping it planted when things get twisty, and smoothing out the bumps of the everyday drive.

Intelligent Manual Transmission

Corolla Hatchback's available 6-speed Intelligent Manual Transmission (iMT) incorporates an intelligent rev-matching feature, helping to reduce transmission shock when downshifting.



XSE shown in Blue Flame with available accessory rear window spoiler. Above: XSE interior shown in Black combination leather trim.



EXTERIOR

Fun at first sight.

Corolla Hatchback has unforgettable charisma. With its available two-tone paint job with black roof, side mirrors and spoiler, the sporty hatchback design makes a lasting first impression. After you park, you'll catch yourself looking over your shoulder to steal one last glance.



XSE shown in Blue Flame with Midnight Black Metallic roof¹ and available accessory rear window spoiler.

LED fog lights

Available LED fog lights peek out on either side of the available chrome grille surround, shining a light on Corolla Hatchback's aggressive front end.

18-in. alloy wheels

Available 18-in. alloy wheels add to the unique profile of Corolla Hatchback. Every stoplight is a chance to turn heads. Every spoke on the wheels is crafted to enhance style.



See numbered footnotes in Disclosures section.

SE/NIGHTSHADE EDITION

Take the night shift.

Show up with style. SE Nightshade Edition's blacked-out 18-in. alloy wheels, shark-fin antenna, rear spoiler and other black accents add to this hatchback's charismatic curb appeal. The SE Nightshade Edition is available in Midnight Black Metallic, Super White and Classic Silver Metallic.



SE Nightshade Edition shown in Midnight Black Metallic.

SE/SPECIAL EDITION

Style that stands out.

Assert yourself with the 2021 Special Edition. This limited-edition Corolla Hatchback comes complete with Special Edition badging, a sporty front splitter and side skirts to match. To top it off, Special Edition's 18-in. alloy wheels are painted black for maximum sleekness.



Special Edition shown in Supersonic Red.

INTERIOR

Fun for all five senses.

Corolla Hatchback's premium piano-black accents, soft-touch materials and contrast stitching on the dash and doors show that no inch of the interior was overlooked. Available leather-trimmed seats and dual zone automatic climate control also complement the hatchback's fun-to-drive DNA.



XSE interior shown in Black combination leather trim. Below left: XSE interior shown in Black combination leather trim with Apple CarPlay^{®2} compatibility.



Screen depiction accurate at time of posting.



8-in. multimedia touchscreen

A stunning 8-in. touchscreen display makes staying connected simple. Use Apple CarPlay^{®2} with your compatible iPhone^{®3} while the available Wi-Fi Connect⁴ and Safety Connect^{®5} provide added peace of mind.

7-in. Multi-Information Display

An available 7-in. Multi-Information Display (MID) puts driving information right before your eyes. You can also use the advanced steering wheel controls to scroll through songs, make calls and more.

Cargo space

Go ahead and load up. With fold-flat rear seats and 17.8 cubic feet of cargo volume,⁶ Corolla Hatchback has room for the whole crew and all their stuff. It's ready for adventure whenever you are.

See numbered footnotes in Disclosures section.

Amplify your drive.

Take advantage of smarter and convenient technologies designed to simplify your everyday life. From a suite of services that are there for you 24/7 to an immersive audio multimedia system, you can stay connected to your world.



Connected Services

Our available suite of Connected Services⁷ provides added convenience and peace of mind.

- ✓ **Safety Connect[®]**
Emergency SOS assistance and 24/7 Toyota Roadside Assistance.^{5, 8}
- ✓ **Service Connect**
Get personalized maintenance updates and vehicle health reports.⁹
- ✓ **Remote Connect**
Start, lock/unlock your doors and more, using your compatible smart device.¹⁰
- ✓ **Wi-Fi Connect**
Turn your Toyota into a hotspot with 4G connectivity.⁴
- ✓ **Destination Assist**
24/7 live agent assistance to locate your next destination.¹¹

To view included trial details, please visit toyota.com/connected-services.

Audio Multimedia

Make every drive more personal. By utilizing your vehicle's touchscreen display and audio multimedia capabilities, you'll always have access to what you want. Whether it's listening to your favorite playlist or finding the most scenic route to your destination, you'll enjoy the latest in connectivity and technologies that are all about you.



Apple CarPlay[®]

Bring along a familiar face. With Apple CarPlay^{®2} compatibility, you can use your compatible iPhone^{®3} with the audio multimedia system to get directions, make calls, send and receive messages, and listen to music — all while staying focused on your commute.



Android Auto[™]

Stay connected on the road. By pairing your compatible Android^{™12} phone with the audio multimedia system, Android Auto^{™13} lets you access your Google Assistant, get real-time traffic alerts, make and receive phone calls, listen to your favorite soundtrack and more.



SiriusXM[®] All Access 3-month trial subscription

Enjoy listening to what you want to hear. With SiriusXM^{®14} you get the deepest variety of ad-free music, more sports coverage than anywhere else, exclusive talk channels, every kind of comedy, and the most complete news coverage.¹⁵



Amazon Alexa

Almost anywhere the road takes you, Amazon Alexa¹⁶ connectivity follows. With a smartphone connection and the Toyota+Alexa app, all you have to do is ask Alexa to play music, listen to audiobooks, hear the news, check weather, control smart-home devices and more.



JBL[®]

Feel the difference and hear the truth. Designed specifically for Toyota, JBL^{®17} finely tunes each speaker to the interior of the vehicle. Just turn up the volume to hear the crisp, rich, vibrant sound come through.



TOYOTA SAFETY SENSE™ 2.0 (TSS 2.0)

Peace of mind comes standard.

Toyota Safety Sense™ 2.0 (TSS 2.0)¹⁸ is a bundle of active safety features included on many new Toyota vehicles at no additional cost. These innovative features were designed to help protect you and your passengers from harm.



Pre-Collision System with Pedestrian Detection¹⁹



Full-Speed Range Dynamic Radar Cruise Control^{20, 21}



Lane Departure Alert with Steering Assist²²



Automatic High Beams²³



Lane Tracing Assist²⁴



Road Sign Assist²⁵

COROLLA HATCHBACK MODELS



SE

Includes these key features

Mechanical/Performance

- ✓ 2.0L 4-Cylinder Dynamic-Force Engine with 168 hp
- ✓ Dynamic Shift Continuously Variable Transmission (CVT)
- ✓ Normal and Sport driving modes
- ✓ Available 6-speed Intelligent Manual Transmission (iMT)
- ✓ Front-Wheel Drive (FWD)
- ✓ Up to 32 city/41 highway/35 combined EPA-est. mpg²⁶

Exterior Features

- ✓ LED headlights and LED Daytime Running Lights (DRL) with auto on/off feature
- ✓ 16-in. twin-spoke alloy wheels
- ✓ Dark gray front upper grille surround
- ✓ Color-keyed front lower grille surround
- ✓ Color-keyed rear spoiler
- ✓ Color-keyed heated power outside mirrors with turn signal indicators
- ✓ Single exhaust with dual chrome diffusers
- ✓ Color-keyed rear diffuser surround

Interior Features

- ✓ Automatic climate control
- ✓ Smart Key System²⁷ with Push Button Start
- ✓ 4.2-in. Multi-Information Display (MID)
- ✓ Premium leather-trimmed steering wheel
- ✓ Paddle shifters (CVT)
- ✓ Fabric sport seats
- ✓ 60/40 split fold-down rear seats
- ✓ Two USB charging ports²⁸
- ✓ Electric Parking Brake (EPB)²⁹ with Brake Hold³⁰ function

Audio Multimedia

- ✓ Audio includes:
 - 8-in. touchscreen and six speakers
 - Android Auto^{TM13} & Apple CarPlay^{®2} compatible
 - SiriusXM^{®14} with 3-month All Access trial subscription¹⁵
- ✓ Connected Services⁷ with Safety Connect^{®5}

Safety Features

- ✓ Toyota Safety Sense[™] 2.0 (TSS 2.0)¹⁸
- ✓ Star Safety System[™]
- ✓ Ten airbags³¹

Packages/Options

- ✓ SE Preferred Package (CVT) includes:
 - Audio Plus multimedia
 - Blind Spot Monitor (BSM)³² with Rear Cross-Traffic Alert (RCTA)³³
- ✓ Special Edition Package (CVT) includes:
 - 18-in. black alloy wheels
 - Supersonic Red paint
 - Body kit including front splitter, rear bumper garnish, side skirts, unique badging and black rear spoiler
- ✓ Enhanced cargo space⁶ — removes spare tire and includes Tire Repair Kit



SE Nightshade Edition

Adds to or replaces features offered on SE

Mechanical/Performance

- ✓ Dynamic Shift Continuously Variable Transmission (CVT)
- ✓ Normal and Sport driving modes
- ✓ 32 city/41 highway/35 combined EPA-est. mpg²⁶

Exterior Features

- ✓ 18-in. black alloy wheels
- ✓ Black front lower grille surround
- ✓ Black rear spoiler
- ✓ Black heated power outside mirrors with turn signal indicators
- ✓ Single exhaust with dual black diffusers
- ✓ Black rear diffuser surround
- ✓ Black rear Toyota emblem and badges

Audio Multimedia

- ✓ Audio includes:
 - 8-in. touchscreen and six speakers
 - Android Auto^{TM13} & Apple CarPlay^{®2} compatible
 - SiriusXM^{®14} with 3-month All Access trial subscription¹⁵
- ✓ Connected Services⁷ with Safety Connect^{®5}

Safety Features

- ✓ Toyota Safety Sense[™] 2.0 (TSS 2.0)¹⁸
- ✓ Star Safety System[™]
- ✓ Ten airbags³¹



XSE

Adds to or replaces features offered on SE

Mechanical/Performance

- ✓ Dynamic Shift Continuously Variable Transmission (CVT)
- ✓ Normal and Sport driving modes
- ✓ Available 6-speed Intelligent Manual Transmission (iMT)
- ✓ Up to 30 city/38 highway/33 combined EPA-est. mpg²⁶

Exterior Features

- ✓ Integrated LED fog lights
- ✓ 18-in. machined finish alloy wheels
- ✓ Front chrome grille surround

Interior Features

- ✓ Dual zone automatic climate control
- ✓ 7-in. Multi-Information Display (MID)
- ✓ Leather-trimmed sport seats with fabric inserts
 - Heated front seats with sport bolsters

Audio Multimedia

- ✓ Audio Plus includes:
 - 8-in. touchscreen and six speakers
 - Android Auto^{TM13} & Apple CarPlay^{®2} compatible
 - SiriusXM^{®14} with 3-month All Access trial subscription¹⁵
- ✓ Connected Services⁷ with Safety Connect^{®5}

Safety Features

- ✓ Toyota Safety Sense[™] 2.0 (TSS 2.0)¹⁸
- ✓ Star Safety System[™]
- ✓ Ten airbags³¹
- ✓ Blind Spot Monitor (BSM)³² with Rear Cross-Traffic Alert (RCTA)³³

Options and Packages

- ✓ XSE Preferred Package (CVT) includes:
 - Premium Audio, Dynamic Navigation³⁴ with 3-year trial³⁵ and eight JBL^{®17} speakers
 - Qi-compatible wireless charging³⁶
- ✓ Adaptive Front Lighting System (AFS)³⁷
- ✓ Enhanced cargo space⁶ — removes spare tire and includes Tire Repair Kit

COROLLA HATCHBACK COLORS & TRIMS



Midnight Black Metallic



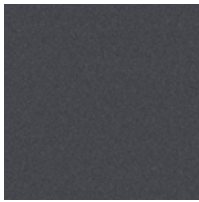
Galactic Aqua Mica



Blue Flame



Supersonic Red



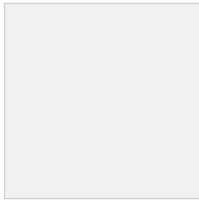
Magnetic Gray Metallic



Classic Silver Metallic



Wind Chill Pearl!



Super White

SE fabric shown in Black



SE fabric shown in Moonstone



XSE combination leather trim shown in Black



XSE combination leather trim shown in Moonstone



Available Midnight Black Metallic roof¹



Blue Flame, Supersonic Red, Magnetic Gray Metallic, Classic Silver Metallic, Wind Chill Pearl!¹

COROLLA HATCHBACK WHEELS



16-in. twin-spoke alloy wheels



18-in. machined-finish alloy wheels



18-in. black alloy wheels

See numbered footnotes in Disclosures section.

COROLLA HATCHBACK ACCESSORIES

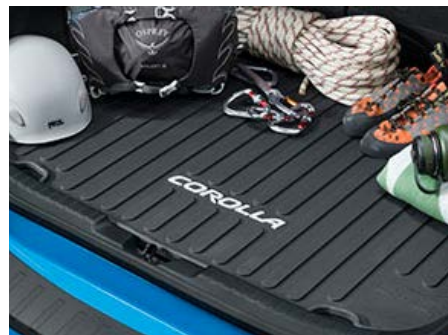
This is a great way to add extra personality to your Corolla Hatchback. Not every accessory is available in your area, so for a complete list of accessories, go to toyota.com/corollahatchback/accessories.



All-weather floor liners³⁸



Blackout emblem overlays



Cargo tray⁶



Doorsill protectors



Lower rocker appliqué



Rear window spoiler



Removable cross bars



TRD air filter



TRD oil filter

WARRANTIES

Every Toyota Car, Truck and SUV is built to exceptional standards. And that's not idle boasting. We back it up with these Limited Warranty Coverages:

Basic: 36 months/36,000 miles (all components other than normal wear and maintenance items).

Powertrain: 60 months/60,000 miles (engine, transmission/transaxle, drive system, seatbelts and airbags).

Rust-Through: 60 months/unlimited miles (corrosion perforation of sheet metal).

Emissions: Coverages vary under Federal and California regulations. Refer to applicable *Warranty and Maintenance Guide* for details.

Accessories: For Genuine Toyota Accessories purchased at the time of the new vehicle purchase, the Toyota Accessory Warranty coverage is in effect for 36 months/36,000 miles from the vehicle's in-service date, which is the same coverage as the Toyota New Vehicle Limited Warranty.

For Genuine Toyota Accessories purchased after the new vehicle purchase the coverage is 12 months, regardless of mileage, from the date the accessory was installed on the vehicle, or the remainder of any applicable new vehicle warranty, whichever provides greater coverage.

You may be eligible for transportation assistance if it's necessary that your vehicle be kept overnight for repairs covered under warranty. Please see your authorized Toyota dealership for further details.

For complete details about Toyota's warranties, please visit www.toyota.com, refer to the applicable *Warranty and Maintenance Guide* or see your Toyota dealer.

COROLLA HATCHBACK FEATURES³⁹

S = Standard O = Optional P = Available as part of a package

Exterior

| | SE | SE Nightshade | XSE |
|--|---------|------------------|-----|
| LED headlights and LED Daytime Running Lights (DRL) with auto on/off feature | S | S | S |
| LED taillights | S | S | S |
| Integrated LED fog lights | | | S |
| Adaptive Front-Lighting System (AFS) ³⁷ | | | O |
| Dark gray front upper grille surround | S | S | |
| Chrome front upper grille surround | | | S |
| Black front lower grille surround | | S | |
| Color-keyed rear spoiler | S | | S |
| Black rear spoiler | O | S | O |
| Single exhaust with dual chrome diffusers | S | | S |
| Single exhaust with dual black diffusers | | S | |
| Color-keyed rear diffuser surround | S | | S |
| Black rear diffuser surround | | S | |
| Variable intermittent front and rear windshield wipers | S | S | S |
| Color-keyed heated power outside mirrors with turn signal indicators | S | | S |
| Black heated power outside mirrors with turn signal indicators | O | S | O |
| Blind spot warning indicators ³² on side mirrors | P (CVT) | | S |
| Color-keyed outside door handles | S | | S |
| Black outside door handles | | S | |
| Color-keyed side rocker panels | S | | S |
| Black side rocker panels | | S | |
| Color-keyed roof-mounted shark-fin antenna | S | | S |
| Black roof-mounted shark-fin antenna | O | S | O |
| Black roof ¹ | O | | O |
| Black rear Toyota emblem | | S | |
| Black rear grade badge | | S | |
| 16-in. twin-spoke alloy wheels with P205/55R16 tires | S | | |
| 18-in. black alloy wheels with P225/40R18 tires | P | S | |
| 18-in. machined-finish alloy wheels with P225/40R18 tires | | | S |

Interior

| | | | |
|---|---------|---|---------|
| Automatic climate control | S | S | |
| Dual zone automatic climate control | | | S |
| Front console tray, rear console box and glove box | S | S | |
| Power windows with one-touch auto up/down | S | S | S |
| 4.2-in. Multi-Information Display (MID) with odometer, outside temperature, fuel economy and trip information, current/average fuel economy, distance to empty, average speed, trip distance with timer, TPMS, ⁴⁰ scheduled maintenance, compass and warning messages | S | S | |
| 7-in. TFT Multi-Information Display (MID) with customizable settings, odometer, outside temperature, fuel economy and trip information, current/average fuel economy, distance to empty, average speed, trip distance with timer, TPMS, ⁴⁰ scheduled maintenance, compass and warning messages | | | S |
| Fabric sport seats with 6-way adjustable driver's seat with seatback pocket; 4-way adjustable front passenger seat with seatback pocket | S | S | |
| Leather-trimmed heated sport seats with fabric inserts; 8-way power-adjustable driver's seat with seatback pocket; 4-way adjustable front passenger seat with seatback pocket | | | S |
| 60/40 split fold-down rear seats with center armrest and cup holders | S | S | S |
| Premium leather-trimmed tilt/telescopic steering wheel with audio, Multi-Information Display (MID), Bluetooth ^{®41} hands-free phone and voice-command controls | S | S | S |
| Paddle shifters | S (CVT) | S | S (CVT) |
| Sport Mode | S (CVT) | S | S (CVT) |
| Intelligent Manual Transmission (iMT) | O | | O |
| Active Cornering Assist (ACA) | S | S | S |
| Vehicle speed-sensing Electric Power Steering (EPS) | S | S | S |
| Smart Key ²⁷ remote keyless entry system with Push Button Start | S | S | S |
| Covered center console, armrest and storage | S | S | S |
| One 12V auxiliary power outlet ⁴² | S | S | S |
| Two USB 2.0 charging ports ²⁸ | S | S | S |
| Qi-compatible wireless smartphone charging ³⁶ | | | P (CVT) |

| Interior (continued) | SE | SE Nightshade | XSE |
|---|----|------------------|-----|
| ISOFIX lower anchor (left and right seats) | S | S | S |
| Top tether anchor | S | S | S |
| Electric Parking Brake (EPB) ²⁹ with Brake Hold ³⁰ function | S | S | S |

Audio Multimedia

| | | | |
|---|---------|---|---------|
| Audio — includes 8-in. touchscreen, six speakers, Android Auto ^{TM13} & Apple CarPlay ^{®2} & Amazon Alexa ¹⁶ compatible, USB media port, ²⁸ two USB charge ports ²⁸ , hands-free phone capability and music streaming ⁴¹ via Bluetooth ^{®41} wireless technology, SiriusXM ^{®14} with 3-month All Access trial subscription, ¹⁵ Connected Services ⁷ — Safety Connect ^{®5} with 1-year trial, ⁴³ and Wi-Fi Connect ⁴ with up to 2GB within 3-month trial. ⁴⁴ See toyota.com/audio-multimedia for details. | S | S | |
| Audio Plus — includes 8-in. touchscreen, six speakers, USB media port; ²⁸ two USB charge ports; ²⁸ hands-free phone capability and music streaming ⁴¹ via Bluetooth ^{®41} wireless technology, Android Auto ^{TM13} & Apple CarPlay ^{®2} & Amazon Alexa ¹⁶ compatible, SiriusXM ^{®14} with 3-month All Access trial subscription, ¹⁵ Connected Services ⁷ — Safety Connect ^{®5} with 1-year trial, ⁴³ Service Connect ⁹ with 10-year trial, ⁴⁵ Remote Connect ¹⁰ with 1-year trial, ⁴⁶ and Wi-Fi Connect ⁴ with up to 2GB within 3-month trial. ⁴⁴ See toyota.com/audio-multimedia for details. | P (CVT) | | S |
| Premium Audio with Dynamic Navigation ³⁴ with 3-year trial ³⁵ — includes eight speakers including subwoofer and amplifier, 8-in. touchscreen, eight JBL ^{®17} speakers with amplifier, USB media port; ²⁸ two USB charge ports; ²⁸ hands-free phone capability and music streaming ⁴¹ via Bluetooth ^{®41} wireless technology, Android Auto ^{TM13} & Apple CarPlay ^{®2} & Amazon Alexa ¹⁶ compatible, SiriusXM ^{®14} with 3-month All Access trial subscription, ¹⁵ Connected Services ⁷ — Safety Connect ^{®5} with 1-year trial, ⁴³ Service Connect ⁹ with 10-year trial, ⁴⁵ Remote Connect ¹⁰ with 1-year trial, ⁴⁶ Wi-Fi Connect ⁴ with up to 2GB within 3-month trial ⁴⁴ and Destination Assist ¹¹ with 1-year trial. ⁴⁷ See toyota.com/audio-multimedia for details. | | | P (CVT) |

Safety and Convenience

| | | | |
|--|---------|---|---------|
| STAR SAFETY SYSTEM ™ Star Safety System™ — includes Enhanced Vehicle Stability Control (VSC), ⁴⁸ Traction Control (TRAC), 4-wheel Anti-lock Brake System (ABS), Electronic Brake-force Distribution (EBD) Brake Assist (BA) ⁴⁹ and Smart Stop Technology [®] (SST) ⁵⁰ | | S | S S |
| Ten airbags ³¹ — includes Advanced Airbag System with driver and front passenger dual stage airbags, front side airbags, driver knee airbag, passenger seat cushion airbag, front and rear side curtain airbags, and rear seat-mounted side airbags | S | S | S |
| Driver and front passenger Whiplash-Injury-Lessening (WIL) ⁵¹ seats | S | S | S |
| 3-point seatbelts for all seating positions; driver-side Emergency Locking Retractor (ELR) and Automatic/Emergency Locking Retractor (ALR/ELR) on all passenger belts | S | S | S |
| LATCH (Lower Anchors and Tethers for CHildren) includes lower anchors on outboard rear seats | S | S | S |
| Child-protector rear door locks and power window lockout control | S | S | S |
| Energy-absorbing collapsible steering column | S | S | S |
| Front and rear energy-absorbing crumple zones | S | S | S |
| Side-impact door beams | S | S | S |
| Tire Pressure Monitor System (TPMS) ⁴⁰ | S | S | S |
| Safety Connect ^{®5} — includes Emergency Assistance, Stolen Vehicle Locator, ⁵² Roadside Assistance ⁸ and Automatic Collision Notification. A one-year trial subscription is included at no additional cost. ⁴³ | S | S | S |
| Toyota Safety Sense™ 2.0 (TSS 2.0) ¹⁸ — Pre-Collision System with Pedestrian Detection (PCS w/PD); ¹⁹ Lane Departure Alert with Steering Assist (LDA w/SA); ²² Automatic High Beams (AHB); ²³ Full-Speed Range Dynamic Radar Cruise Control (DRCC); ²⁰ Road Sign Assist (RSA) ²⁵ and Lane Tracing Assist (LTA) ²⁴ | S (CVT) | S | S (CVT) |
| Toyota Safety Sense™ 2.0 (TSS 2.0) ¹⁸ — Pre-Collision System with Pedestrian Detection (PCS w/PD); ¹⁹ Lane Departure Alert with Steering Assist (LDA w/SA); ²² Automatic High Beams (AHB); ²³ Dynamic Radar Cruise Control (DRCC) ⁵³ and Road Sign Assist (RSA) ²⁵ | S (iMT) | | S (iMT) |
| Blind Spot Monitor (BSM) ³² with Rear Cross-Traffic Alert (RCTA) ³³ | P (CVT) | | S |
| Hill Start Assist Control (HAC) ⁵⁴ | S | S | S |
| Anti-theft system with engine immobilizer ⁵⁵ | S | S | S |
| ToyotaCare ⁵⁶ featuring a no cost maintenance plan and Roadside Assistance ⁵⁶ | S | S | S |

COROLLA HATCHBACK SPECIFICATIONS

S = Standard O = Optional P = Available as part of a package

| Mechanical Performance | SE | SE Nightshade | XSE |
|---|-----------|------------------|-----------|
| ENGINE | | | |
| 2.0L Dynamic Force 4-Cylinder DOHC 16-Valve chain drive with Dual Variable Valve Timing with intelligence (VVTi); 168 hp @ 6,600 rpm; 151 lb.-ft. @ 4,800 rpm | S | S | S |
| EMISSION RATING | | | |
| Federal Environmental Protection Agency (EPA) Emission Standard Tier 3, Bin 50 | S | S | S |
| California Air Resources Board (CARB) Emission Standard: Low Emission Vehicle III (LEV III), Ultra Low Emission Vehicle (ULEV) 50 | S | S | S |
| TRANSMISSION | | | |
| Dynamic-Shift Continuously Variable Transmission (CVT) | S | S | S |
| 6-speed Intelligent Manual Transmission (iMT) | O | | O |
| Sport Mode | S (CVT) | S | S (CVT) |
| DRIVETRAIN | | | |
| Front-Wheel Drive (FWD) | S | S | S |
| BODY CONSTRUCTION | | | |
| Unitized body | S | S | S |
| Suspension | | | |
| MacPherson strut front suspension | S | S | S |
| Multi-link rear suspension | S | S | S |
| STEERING | | | |
| Electric Power Steering (EPS) | S | S | S |
| BRAKES | | | |
| Power-assisted ventilated 11.5-in. front disc brakes; solid 10.5-in. rear disc brakes | S | S | S |
| Anti-lock Brake System (ABS) | S | S | S |
| Vehicle Stability Control (VSC) ⁴⁸ | S | S | S |
| Electronic Controlled Brake (ECB) system | S | S | S |
| DIMENSIONS | | | |
| EXTERIOR (in.) | | | |
| Overall height | 57.1 | 57.1 | 57.1 |
| Overall width | 70.5 | 70.5 | 70.5 |
| Overall length | 172.0 | 172.0 | 172.0 |
| Wheelbase | 103.9 | 103.9 | 103.9 |
| Track (front/rear) | 60.3/60.8 | 60.3/60.8 | 60.3/60.8 |
| Ground clearance | 5.1 | 5.1 | 5.1 |
| Coefficient of drag (Cd) | .32 | .32 | .32 |
| INTERIOR (front/rear) (in.) | | | |
| Head room | 38.4/37.6 | 38.4/37.6 | 38.4/37.6 |
| Shoulder room | 53.9/54.5 | 53.9/54.5 | 53.9/54.5 |
| Hip room | 53.9/45.5 | 53.9/45.5 | 53.9/45.5 |
| Leg room | 42.0/29.9 | 42.0/29.9 | 42.0/29.9 |
| Seating capacity | 5 | 5 | 5 |
| Weights and Capacities | | | |
| Curb weight (lbs.) | | | |
| Manual | 3060 | – | 3060 |
| Automatic | 3060 | 3060 | 3060 |
| EPA passenger volume (cu. ft.) | | | |
| Cargo volume (cu. ft.) ⁶ | 17.8 | 17.8 | 17.8 |
| Fuel tank (gal.) | 13.2 | 13.2 | 13.2 |
| WHEELS AND TIRES | | | |
| 16-in. aluminum wheels, silver metallic paint | S | | |
| 18-in. aluminum wheels, all black | | S | |
| 18-in. aluminum wheels, bright machined finish with dark-gray metallic paint | | | S |
| Type: All-Season | S | S | S |
| Spare: Temporary | S | S | S |
| Size: 205/55R16 | S | | |
| 225/40R18 | | S | S |
| MILEAGE ESTIMATES (mpg city/highway/combined)²⁶ | | | |
| Dynamic Shift Continuously Variable Transmission (CVT) | 32/41/35 | 32/41/35 | 30/38/33 |
| Intelligent Manual Transmission (iMT) | 28/37/31 | | 28/37/31 |

DISCLOSURES

1. Extra-cost color. 2. Apps and services are subject to change at any time without notice. Data charges may apply. Apple CarPlay® functionality requires a compatible iPhone® connected with an approved data cable into the USB media port. Apple CarPlay® is a registered trademark of Apple Inc. 3. iPhone® is a registered trademark of Apple Inc. All rights reserved. 4. Eligible vehicle and wireless service required. Coverage and service not available everywhere. Valid in the contiguous U.S. and Alaska. Do not drive distracted. Go to att.com/toyota for terms and conditions. Data usage and charges apply. Up to 5 devices can be supported using in-vehicle connectivity. Apps and services subject to change at any time without notice. 5. Toyota Safety Connect® depends on an operative telematics device, a cellular connection, navigation map data and GPS signal strength and other factors outside of Toyota's control, all of which can limit system functionality or availability, including access to response center and emergency support. Stolen vehicle police report required to use Stolen Vehicle Locator. Registration required. Service subject to change at any time without notice. Terms of Use apply. Service may vary by vehicle and region. See usage precautions and service limitations in *Owner's Manual* and at toyota.com/connected-services/ for additional details. To learn about Toyota's data collection, use, sharing and retention practices, please visit <https://www.toyota.com/privacyvts/>. 6. Cargo and load capacity limited by weight and distribution. Always properly secure cargo and cargo area. 7. Connected Services depends on an operative telematics device, a cellular connection, navigation map data, GPS signal strength and other factors outside of Toyota's control, all of which can limit system functionality or availability, including access to response center and emergency support. Service may vary by vehicle and region. Terms of Use apply. Data charges may apply. Apps and services subject to change at any time without notice. See toyota.com/connected-services for details. To learn about Toyota's data collection, use, sharing and retention practices, please visit <https://www.toyota.com/privacyvts/>. Stolen vehicle police report required to use Stolen Vehicle Locator. 8. Requires adequate cellular coverage and GPS signal strength. May not work in all areas. Service may vary by vehicle and region. See Toyota Dealer for details and exclusions. 9. Information provided is based on the last time data was collected from the vehicle and may not be up to date. Service Connect depends on an operative telematics device, a cellular connection, navigation map data, GPS signal strength and other factors outside of Toyota's control, which can limit functionality or availability. Service may vary by vehicle and region. Registration required. Service subject to change at any time without notice. Terms and conditions of subscription service agreement apply. See usage precautions and service limitations in *Owner's Manual* and at toyota.com/connected-services for additional details. To learn about Toyota's data collection, use, sharing and retention, please visit <https://www.toyota.com/privacyvts/>. 10. Use only if aware of circumstances surrounding vehicle and it is legal and safe to do so (e.g., do not remotely start engine if vehicle is in an enclosed space or vehicle is occupied by a child). Remote Connect depends on an operative telematics device, a cellular connection, GPS signal strength and other factors outside of Toyota's control, which can limit system functionality and availability. Service may vary by vehicle and region. Registration and app download required. Terms of Use apply. Data charges may apply. Remote start/stop not available on manual-transmission-equipped vehicles. Services subject to change at any time without notice. See usage precautions and service limitations in *Owner's Manual* and at <https://www.toyota.com/connected-services> for additional details. To learn about Toyota's data collection, use, sharing and retention practices, please visit <https://www.toyota.com/privacyvts/>. 11. Destination Assist depends on an operative telematics device, a cellular connection, navigation map data and GPS signal strength and other factors outside of Toyota's control, which can limit system ability functionality or availability. Use common sense when relying on this information. Service may vary by vehicle and region. Registration required. Services subject to change at any time without notice. Terms of Use apply. See *Owner's Manual* and toyota.com/connected-services for additional limitations and details. To learn about Toyota's data collection, use, sharing and retention practices, please visit <https://www.toyota.com/privacyvts/>. 12. Android is a trademark of Google LLC. 13. Vehicle user interface is a product of Google and its terms and privacy statement apply. To use Android Auto on your audio display, you'll need an Android Auto compatible vehicle and Android phone. For phone compatibility visit: <https://www.android.com/auto/>. Requires compatible smartphone connected with an approved data cable into the USB media port, and data plan rates apply. Apps and services vary by phone carrier and are subject to change at any time without notice. Android, Android Auto and Waze are trademarks of Google. 14. SiriusXM® audio services require a subscription sold separately by Sirius XM Radio Inc. If you decide to continue service after your trial, the subscription plan you choose will automatically renew thereafter and you will be charged according to your chosen payment method at then-current rates. Fees and taxes apply. To cancel, you must call SiriusXM at 1-866-635-2349. See SiriusXM Customer Agreement for complete terms at www.siriusxm.com. All fees and programming subject to change. Not all vehicles or devices are capable of receiving all services offered by SiriusXM. Current information and features may not be available in all locations, or on all receivers. ©2021 Sirius XM Radio Inc. SiriusXM and all related marks and logos are trademarks of Sirius XM Radio Inc. 15. SiriusXM All Access trial length and service availability may vary by model, model year or trim. 16. Amazon, Alexa and all related logos are trademarks of Amazon.com, Inc. or its affiliates. Certain functions require adequate signal strength and smartphone technology/connectivity. Not all Amazon Alexa functionality is available for in-vehicle use. See applicable app for details. Download of the Toyota+Alexa app is required to begin in-vehicle use of Alexa. Data charges may apply for certain functions. Apps, prices and services subject to change at any time without notice. To learn more, go to <https://www.toyota.com/audio-multimedia>. To learn more about Toyota's data collection, use, sharing and retention practices, please visit <https://www.toyota.com/privacyvts/>. 17. JBL® is a registered trademark of Harman International Industries, Inc. 18. Toyota Safety Sense™ effectiveness is dependent on many factors including road, weather and vehicle conditions. Drivers are responsible for their own safe driving. Always pay attention to your surroundings and drive safely. See *Owner's Manual* for additional limitations and details. 19. The Pre-Collision System (PCS) with Pedestrian Detection (PD) is designed to determine if impact is imminent and help reduce impact speed and damage in certain frontal collisions involving a vehicle, a pedestrian or a bicyclist. PCS w/PD is not a substitute for safe and attentive driving. System effectiveness depends on many factors, such as speed, size and position of pedestrian or bicyclist, and weather, light and road conditions. See *Owner's Manual* for additional limitations and details. 20. Full-Speed Range Dynamic Radar Cruise Control (DRCC) is designed to assist the driver and is not a substitute for safe and attentive driving practices. System effectiveness is dependent on many factors including road, weather and traffic conditions. Vehicles with manual transmission have regular DRCC. See *Owner's Manual* for additional limitations and details. 21. Corolla models with manual transmissions come with Dynamic Radar Cruise Control (DRCC); Full-Speed Range Dynamic Radar Cruise Control (DRCC) is only available on Corolla models with automatic transmissions. 22. Lane Departure Alert with Steering Assist is designed to read visible lane markers under certain conditions. It provides a visual and audible alert and slight steering force when lane departure is detected. It is not a collision-avoidance system or a substitute for safe and attentive driving. Effectiveness is dependent on many factors including road, weather and vehicle conditions. See *Owner's Manual* for additional limitations and details. 23. Automatic High Beams operate at speeds above 25 mph. Factors such as a dirty windshield, weather, lighting and terrain limit effectiveness, requiring the driver to manually operate the high beams. See *Owner's Manual* for additional limitations and details. 24. Lane Tracing Assist (LTA) is designed to read visible lane markers and detect other vehicles under certain conditions. It is only operational when DRCC is engaged. Not available on vehicles with manual transmissions. See *Owner's Manual* for additional limitations and details. 25. Do not rely exclusively on Road Sign Assist (RSA). RSA is a driver support system that utilizes the vehicle's forward-facing camera and navigation system (when data is available) to recognize certain road signs and provide information to the driver via the multi-information display and/or Head-Up Display. Effectiveness is dependent on road, weather, vehicle and sign conditions. Use common sense when using RSA and do not drive distracted. See *Owner's Manual* for additional limitations and details. 26. EPA-estimated 32 city/41 hwy/35 combined mpg for 2021 Corolla Hatchback SE CVT and SE Nightshade Edition, and 30 city/38 hwy/33 combined mpg for 2021 Corolla Hatchback XSE CVT. Use for comparison purposes only. Your mileage will vary for many reasons, including your vehicle's condition and how/where you drive. See www.fueleconomy.gov. 27. The Smart Key System may interfere with some pacemakers or cardiac defibrillators. If you have one of these medical devices, please talk to your doctor to see if you should deactivate this system. 28. May not be compatible with all mobile phones, MP3/WMA players and like models. 29. When the system is on, Automatic Electric Parking Brake is designed to automatically engage the Electric Parking Brake under limited conditions. It may not hold the vehicle under all conditions and does not function when the vehicle is in Reverse. Automatic Electric Parking Brake is not a substitute for manual use of the Electric Parking Brake. See *Owner's Manual* for additional limitations and details. 30. When the system is on, Brake Hold is designed to keep the brakes engaged after the driver brings the vehicle to a complete stop. It may not hold the vehicle under certain conditions and does not function when the vehicle is in Reverse. Brake Hold is not a substitute for safe and attentive driving. See *Owner's Manual* for additional limitations and details. 31. Airbag systems are Supplemental Restraint Systems and are designed to inflate only under certain conditions and in certain types of severe collisions. To decrease the risk of injury from an inflating airbag, always wear seatbelts and sit upright in the middle of the seat as far back as possible. Do not put objects in front of an airbag or around the seatback. Do not use a rearward-facing child seat in any front passenger seat. See *Owner's Manual* for additional limitations and details. 32. Do not rely exclusively on the Blind Spot Monitor. Always look over your shoulder and use your turn signal. There are limitations to the function, detection and range of the monitor. See *Owner's Manual* for additional limitations and details. 33. Do not rely exclusively on the Rear Cross-Traffic Alert system. Always look over your shoulder and use your mirrors to confirm rear clearance. There are limitations to the function, detection and range of the system. See *Owner's Manual* for additional limitations and details. 34. Dynamic Navigation depends on an operative telematics device, a cellular connection, navigation map data and GPS signal strength, and other factors outside of Toyota's control, which can limit system functionality or availability. Services not available in every city or roadway. Use common sense when relying on information provided. Service may vary by vehicle and region. Registration is required. Terms of Use apply. See *Owner's Manual* and <https://toyota.com/connected-services> for additional limitations and details. To learn about Toyota's data collection, use, sharing and retention practices, please visit <https://www.toyota.com/privacyvts/>. 35. The Dynamic Navigation three-year trial period begins on the original date of purchase or lease of a new vehicle. After the trial period expires, enrollment in paid subscription is required to access the service. 36. Qi wireless charging may not be compatible with all mobile phones, MP3/WMA players and like models. When using the wireless charging system, avoid placing metal objects between the wireless charger and the mobile device when charging is active. Doing so may cause metal objects to become hot and could cause burns. 37. The Adaptive Front-Lighting System helps improve night vision. Situations such as a dirty windshield, rapidly changing light conditions or hilly terrain may limit effectiveness, requiring the driver to manually turn off the system. See *Owner's Manual* for additional limitations and details. 38. This floor mat/floor liner was designed specifically for use in your model and model year vehicle and SHOULD NOT be used in any other vehicle. To avoid potential interference with pedal operation, each mat/liner must be secured with its fasteners. Do not install a floor mat/floor liner on top of an existing floor mat/floor liner. 39. Toyota strives to build vehicles to match customer interest and thus they typically are built with popular options and option packages. Not all options/packages are available separately and some may not be available in all regions of the country. See toyota.com for information about options/packages commonly available in your area. If you would prefer a vehicle without any or with different options, contact your dealer to check for current availability or the possibility of placing a special order. Color(s) depicted may vary based on multiple factors, including ambient lighting and the format in which it is being viewed (e.g., computer, mobile device or print). 40. The Tire Pressure Monitor System alerts the driver when tire pressure is critically low. For optimal tire wear and performance, tire pressure should be checked regularly with a gauge; do not rely solely on the monitor system. See *Owner's Manual* for additional limitations and details. 41. The Bluetooth® word mark and logos are registered trademarks owned by Bluetooth SIG, Inc., and any use of such marks by Toyota is under license. A compatible Bluetooth®-enabled phone must first be paired. Phone performance depends on software, coverage and carrier. 42. Rated for 12 volts/10 amps. See *Owner's Manual* for additional limitations and details. 43. The Safety Connect® trial period is at no extra cost and begins on the original date of purchase or lease of a new vehicle. After the trial

DISCLOSURES

period expires, enrollment in paid subscription is required to access the service. **44.** The Wi-Fi Connect trial begins at the time of activation and expires when 2GB of data is used or when the 3-month period ends. After the trial period expires, enrollment in a paid subscription is required to access the service. Terms and conditions apply. **45.** The Service Connect trial period is at no extra cost and begins on the original date of purchase or lease of a new vehicle. After the respective trial period expires, enrollment in paid subscription is required to access the service. **46.** The Remote Connect trial period is at no extra cost and begins on the original date of purchase or lease of a new vehicle. After the trial period expires, enrollment in a paid subscription is required to access the service. Terms and conditions apply. **47.** The Destination Assist trial period is at no extra cost and begins on the original date of purchase or lease of a new vehicle. After the trial period expires, enrollment in a paid subscription is required to access the service. **48.** Vehicle Stability Control is an electronic system designed to help the driver maintain vehicle control under adverse conditions. It is not a substitute for safe and attentive driving practices. Factors including speed, road conditions, weather and driver steering input can all affect whether VSC will be effective in preventing a loss of control. See *Owner's Manual* for additional limitations and details. **49.** Brake Assist is designed to help the driver take advantage of ABS and is not a substitute for safe driving practices. Braking effectiveness also depends on proper vehicle maintenance, tire and road conditions. See *Owner's Manual* for additional limitations and details. **50.** Smart Stop Technology® operates only in the event of certain contemporaneous brake and accelerator pedal applications. When engaged, the system will reduce power to help the brakes bring the vehicle to a stop. Factors including speed, road conditions and driver input can all impact stopping distance. Smart Stop Technology® is not a substitute for safe and attentive driving and does not guarantee instant stopping. See *Owner's Manual* for additional limitations and details. **51.** Whiplash-Injury-Lessening front seats can help reduce the severity of whiplash injury in certain rear-end collisions. **52.** Building and/or parking structures may limit system effectiveness. Stolen vehicle police report required to use Stolen Vehicle Locator. For additional assistance contact the Toyota Customer Experience Center at 1-800-331-4331. **53.** Dynamic Radar Cruise Control (DRCC) is designed to assist the driver and is not a substitute for safe and attentive driving practices. System effectiveness is dependent on many factors including road, weather and traffic conditions. See *Owner's Manual* for additional limitations and details. **54.** Hill Start Assist Control is designed to help minimize backward rolling on steep ascents. It is not a substitute for safe driving judgment and practices. Factors including speed, grade, surface conditions and driver input can all affect whether HAC will be effective in preventing a loss of control. See *Owner's Manual* for additional limitations and details. **55.** The engine immobilizer is a state-of-the-art anti-theft system that is initiated when you insert your key into the ignition switch or bring a Smart Key fob into the vehicle. The engine will only start if the code in the transponder chip inside the key/fob matches the code in the vehicle's immobilizer. The transponder chip is embedded in the key/fob and can be costly to replace. If you lose a key or fob, your Toyota dealer can help or go to www.aloa.org to find a qualified locksmith in your area who can perform high-security key service. **56.** ToyotaCare covers normal factory scheduled maintenance for two years or 25,000 miles, whichever comes first. Certain models require a different maintenance schedule as described in their *Maintenance Guide*. 24-hour Roadside Assistance is also included for two years, unlimited mileage. Roadside Assistance does not include parts and fluids, except emergency fuel delivery. See Toyota dealer for details and exclusions. Valid only in the continental U.S.

Toyota strives to build vehicles to match customer interest and thus they typically are built with popular options and option packages. Not all options/packages are available separately and some may not be available in all regions of the country. See toyota.com for information about options/packages commonly available in your area. If you would prefer a vehicle without any or with different options, contact your dealer to check for current availability or the possibility of placing a special order.

Color(s) depicted may vary based on multiple factors, including ambient lighting and the format in which it is being viewed (e.g., computer, mobile device or print).

Some vehicles are shown with available equipment. Seatbelts should be worn at all times. For details on vehicle specifications, standard features and available equipment in your area, contact your Toyota dealer. A vehicle with particular equipment may not be available at the dealership. Ask your Toyota dealer to help locate a specifically equipped vehicle.

All information presented herein is based on data available at the time of posting, is subject to change without notice and pertains specifically to mainland U.S.A. vehicles only. Vehicles shown may be prototypes, shown using visual effects and/or shown with options. Actual models may vary.



For Toyota Mobility program details, go to www.toyota.com/mobility or call the Toyota Brand Engagement Center at 1-800-331-4331