



## CITROËN SPACETOURER

INSPIRÉ  
PAR VOUS



*Origins*  
SINCE 1919

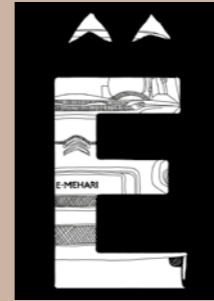
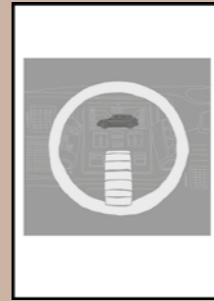
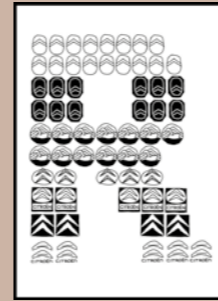
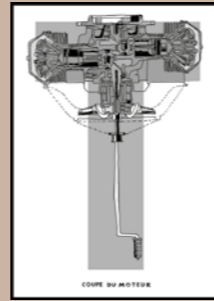
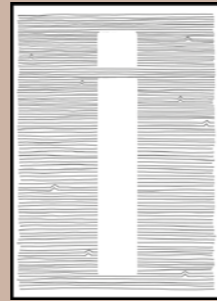
 CONFIGURE VEHICLE

 BOOK A TEST DRIVE

 OFFERS & FINANCE

 FIND A DEALER

    FOLLOW US



During the 90s Le Tone had a major hit, "Joli Dragon", and devoted himself to music for 15 years before progressively moving towards illustrative art. Since 2011 his creations have been exhibited in famous places such as the Pompidou centre. An admirer of artists who know how to make the best use of colour, Le Tone confesses to having a weakness for black and white, which he uses to tell simple stories by using felt pen drawings in notebooks.

## 1974

Citroën launches CX. It's the ultimate mix of technical innovation and advanced design with the engine and gearbox positioned together at the front. Sophisticated hydropneumatic suspension, concave rear screen and a futuristic dashboard help it to succeed amongst more ordinary rivals.



## 2016

Cxperience Concept reinvents the prestige saloon. A bold, fresh silhouette, a high-end stylish interior and the latest technology combine to inspire the world of automotive design.

### CITROËN Origins



Discover the models that make up Citroën's extraordinary history, from 1919 to the present day.



1934

Citroën revolutionises the automotive landscape with the Traction Avant. The famous name relates to its ground breaking front wheel drive engineering.



1939

Citroën launches the 'TUB', a supremely practical modern design with a sliding side door: its successor is the famous Type H, above, launched in 1948.



1948

The much-loved 2 CV is created as a "safe and economical vehicle, able to carry 4 people on-board and 50 kg of luggage". More than 5 million are made.



1955

Unveiled to a stunned public at the 1955 Paris Motor Show, the DS takes futuristic design to new heights. Its stunning aerodynamic shape, created by Flaminio Bertone, earns it the nickname 'flying saucer'. Under the skin it's just as advanced.



1968

It's a golden age for light and agile vehicles like the Ami 6, Dyane and Mehari, a unique design for all roads and multi-purpose use.



2017

Winners of the Manufacturers' Rally Raid World Cup from 1993 to 1997; Rally Raid World Cup Drivers' Champion five times in a row; eight Manufacturers' Champion titles in WRC plus three in WTCC... Citroën has continued to demonstrate exceptional sports pedigree upon returning to WRC in 2017.





CITROËN C-ZERO



CITROËN C1



CITROËN C3



CITROËN C4 CACTUS



CITROËN BERLINGO  
(AVAILABLE IN M AND XL)



CITROËN GRAND  
C4 SPACETOURER

## A CITROËN FOR EVERYONE

*Around town or across the country, every Citroën provides pure comfort and a welcoming environment. It's always been this way.*



CITROËN C3 AIRCROSS  
COMPACT SUV



CITROËN  
C5 AIRCROSS SUV



CITROËN SPACETOURER  
(AVAILABLE IN M AND XL)

# CITROËN SPACETOURER

LIFE WITHOUT COMPROMISE





# CITROËN SPACETOURER THE ESSENTIAL ELEMENTS

## AVAILABLE IN 2 LENGTHS

A choice between M and XL.  
PAGES 10-11

## 'HANDS-FREE' SLIDING SIDE DOORS

Innovative easy access, however much you're carrying!  
PAGES 14-15

## PANORAMIC ROOF

Let the light in.  
PAGES 16-17

## MODULAR THINKING

Ultimate versatility everywhere.  
PAGES 20-21



To watch video tutorials of  
Citroën SpaceTourer scan this  
code with your smartphone.



## SPLIT OPENING TAILGATE

For easier and more convenient access.  
PAGES 22-23

## CITROËN COMFORT

Creating the right mood and space  
for all of your journeys.  
PAGES 26-27

## 1.90M HEIGHT

You can access most car parks.  
PAGES 34-35

## HEAD-UP COLOUR DISPLAY

Technology to make life easier.  
PAGE 39

## ADVANCED EFFICIENCY

Choice of three latest  
generation engines.  
PAGES 42-43



CITROËN SPACETOURER  
FEEL & FLAIR

CITROËN SPACETOURER  
BUSINESS

CITROËN SPACETOURER  
BUSINESS LOUNGE

## CONTENTS

P. 12 – CITROËN SPACETOURER

P. 24 – CITROËN SPACETOURER BUSINESS LOUNGE

P. 30 – CITROËN SPACETOURER BUSINESS

P. 38 – TECHNOLOGY

P. 42 – ENGINES

P. 46 – MODULARITY

P. 48 – EQUIPMENT



## 2 LENGTHS



With its new modular platform, Citroën SpaceTourer offers you a choice of 2 lengths. The M [4.95m] and the spacious XL [5.30 m].



> 4.95 M ..... 5.30 M <



CONFIGURE VEHICLE



BOOK A TEST DRIVE



OFFERS & FINANCE



FIND A DEALER



FOLLOW US



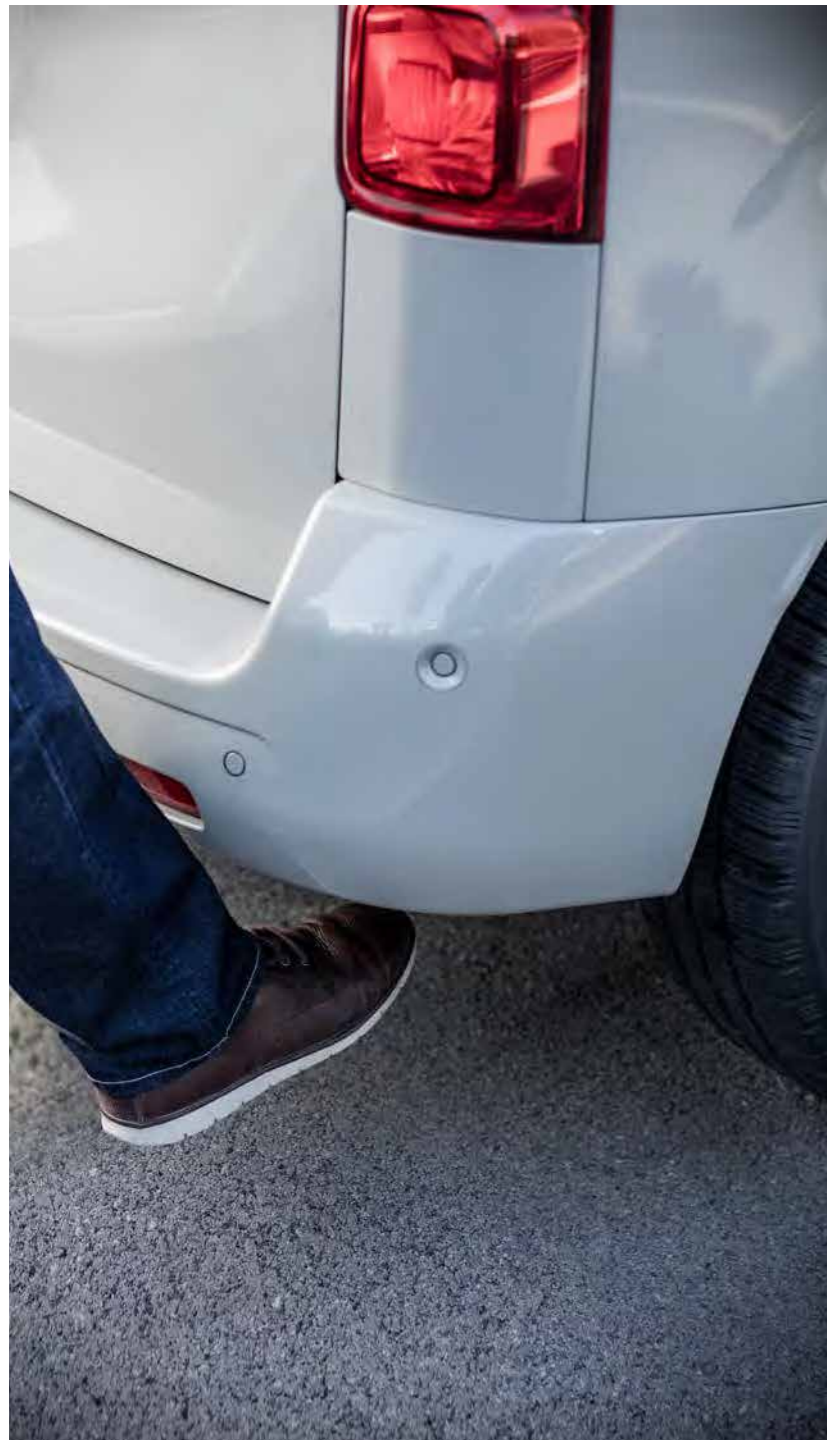
## CITROËN SPACETOURER

Citroën SpaceTourer is designed to accommodate family and business life with ease. A model of versatility, elements such as sliding and removable seats create accessible, flexible space for people and gear – wherever you need to travel. Available in two lengths, Citroën SpaceTourer can seat up to 9\* in relaxed comfort.

*\*Only available on Business version*







## 'HANDS-FREE' SLIDING SIDE DOORS\*

A busy life often means no hands to spare, so 'Hands-Free' technology is here to help. You can open the sliding side doors simply by moving your foot under the corner of the rear bumper, and close and lock the vehicle in the same way. It's practical, ingenious and unique: pure and simple Citroën thinking.

*\* 'Hands-Free' technology is available on all models, either as standard or as a cost option.*





## NATURALLY BRIGHTER

Citroën SpaceTourer is full of bright ideas. Here's one you'll appreciate every day. The split panoramic roof lets in the absolute maximum amount of natural light, whilst offering UV protection and separate sunblinds when you want to fine-tune the interior ambience. Running down the centre of the roof, between the glass panes is an aircraft style panel complete with air conditioning controls and vents. There's also subtle LED lighting at night to create a restful, welcoming atmosphere\*.

*\* LED ambient lighting only available on Flair and Business Lounge.*







## GREAT LENGTHS

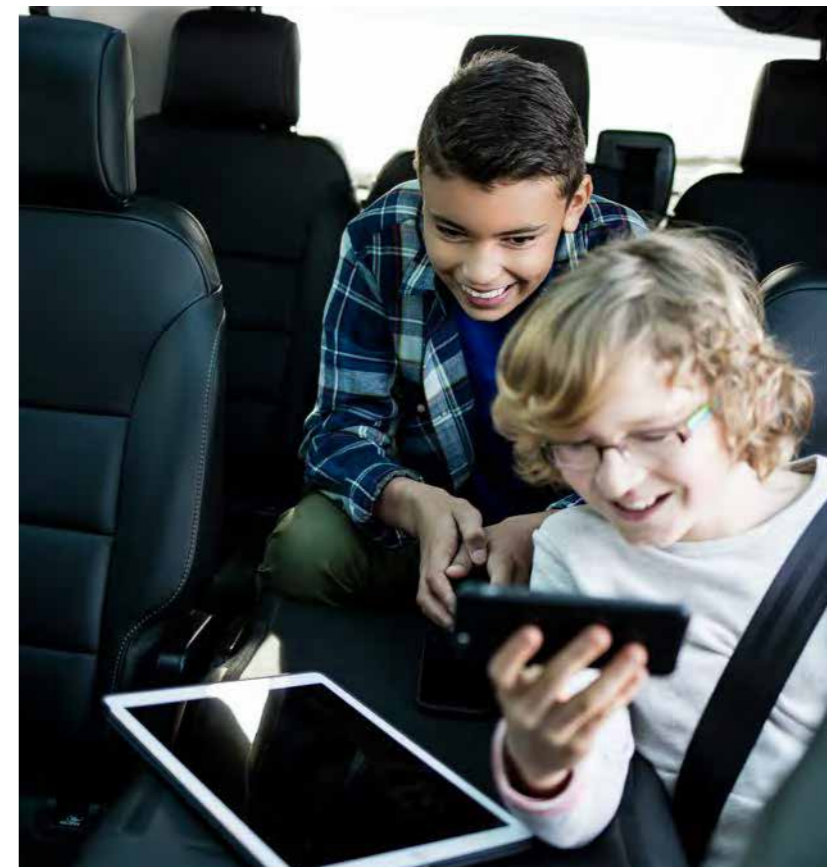
In keeping with its versatile character, Citroën SpaceTourer is available in 2 lengths. M and XL are both easily able to accommodate up to 9 people\*, with plenty of flexible storage space. It's easy to manoeuvre through the city and makes the most of restricted spaces.

\* Up to 9 seats available on Business versions and 7 seats on Business Lounge, with the addition of the optional third row of 3 seats.



## ULTIMATE FLEXIBILITY

For everyone and everything to go safely, securely and in comfort, you need intelligent flexible design. Citroën SpaceTourer is all about meeting your diverse needs. Both 2nd and 3rd row '2 + 1' bench seats slide for maximum legroom and all are separately foldable. This includes the front passenger seat to fit in long loads. If you need a pure load carrier, all back seats are removable, leaving a flat, uninterrupted floor and large amounts of space. There's an impressive 4900 litres (4554 litres VDA) inside the XL. There are also side window blinds and aircraft style tables with cup holders to enhance the feeling of comfort. Storage space is also generous, with a spacious refrigerated glove box and up to 6 easily accessible different plug points, for USB and 12V. Recharging your portable devices on the move has never been easier.







## — OPENING TAILGATE WINDOW\*

Because Citroën SpaceTourer is designed for life's diverse demands, it's packed with intelligent features. The opening tailgate window means that you can quickly access the load space without opening the whole tailgate.

*\* Available as an option or standard on selected models.*



## CITROËN SPACETOURER BUSINESS LOUNGE

Citroën SpaceTourer Business Lounge focuses on the comfort of both driver and passengers thanks to its high-class, elegant interior. The 4 or 5 face-to-face seat configuration and the panoramic glass roof provide ideal travel conditions. The Business Lounge stands out with its wide vertical front grille, conveying assuredness on the road and elegance. The raised position of the headlights and the high driving position gives an impression of dominating the road. Also, the xenon bulbs offer twice as much light as halogen lamps and bring increased driving comfort at night or in poor weather conditions.







## — SPACIOUS AND WELCOMING

The Citroën SpaceTourer Business Lounge configuration, composed of face-to-face individual leather seats, inner ambient lighting and a retractable sliding centre table (available as an option), offers passengers a comfortable place to work or relax. There's also complete privacy thanks to dark tinted rear windows



# INTUITIVE TOUCHSCREEN\*

Citroën SpaceTourer gives you advanced technologies which make driving easier. The 7" touchscreen connects you to all of the car's functions, your media, phone and navigation. The new Citroën Connect Nav with voice control<sup>1</sup> brings you a wealth of real-time traffic information, the location of fuel stops and prices, car parks<sup>1</sup> and even the latest weather. A 'Speed Camera Alert' option sends audible and visible alerts throughout your journey. With the Mirror Screen function you can enjoy your smartphone safely, controlling compatible apps through the 7" touchscreen using Apple CarPlay™, Mirror Link® or Android Auto<sup>2</sup>. Also the Visio Park 180° system\* displays an aerial view of the rear part of the car helping you to achieve precise parking manoeuvres.

\* Available as an option or standard on selected versions  
1. Only information from partners can be displayed.  
2. Dependent on smartphone model.

Additional terms and conditions apply on connected services, including customer acceptance of location sharing prior to activation.





## CITROËN SPACETOURER BUSINESS

Citroën SpaceTourer Business models both convey a strong sense of professionalism and will accommodate you and your passengers in serious comfort. You can select an exact configuration that suits your needs, with a choice of seating and equipment. Here in business class you can carry up to nine people and their belongings in refined style.

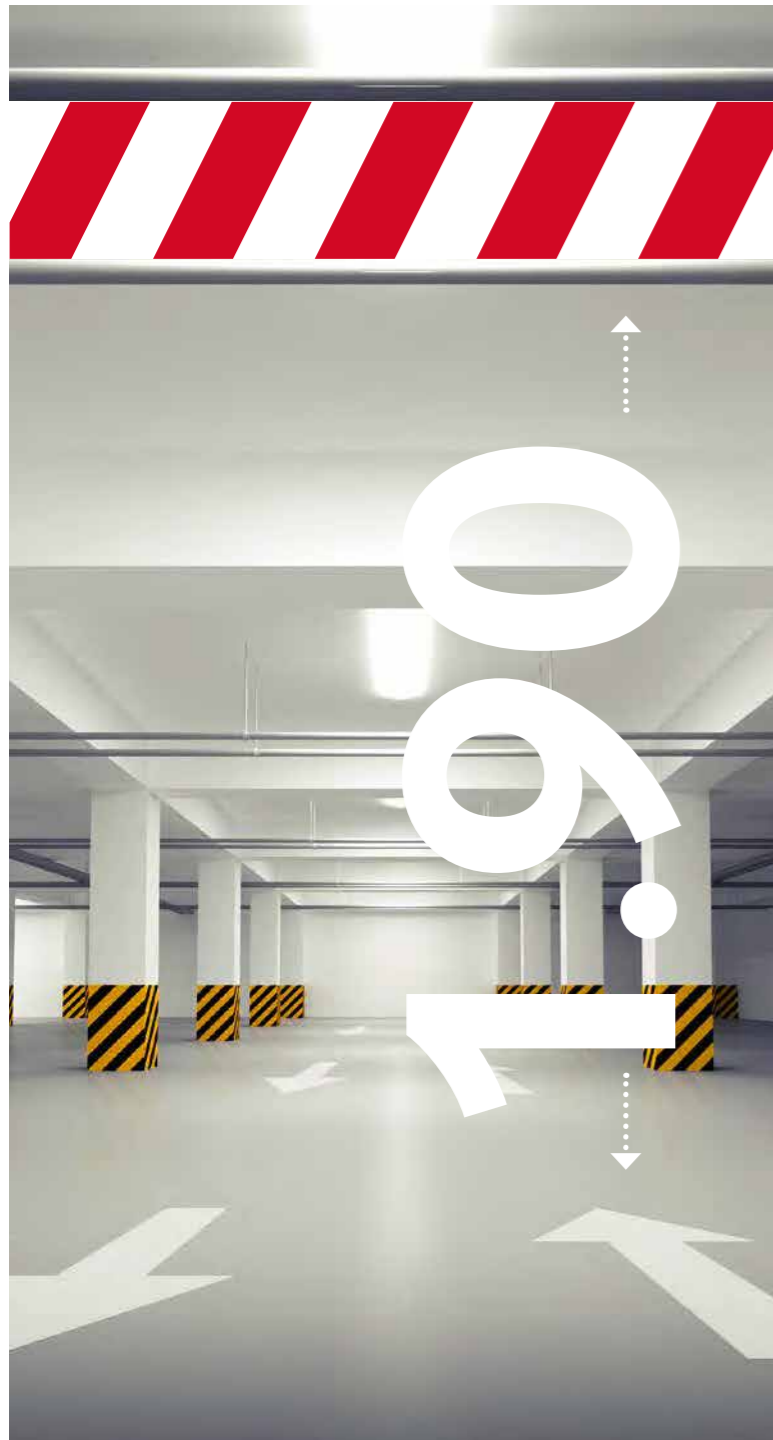






Citroën SpaceTourer Business and SpaceTourer Business Lounge are available in two flexible and spacious versions. M models provide 700 litres (655 litres using VDA method of measurement) of boot space, but if you remove the 3rd row seats this increases to 2300 litres (2228 litres VDA) and to a cavernous 4200 litres (3968 litres VDA) with the 2nd row seats removed. For the ultimate load area, XL models offer up to 4900 litres (4554 litres VDA) when all rear seating is removed.





## ACCESS ALL AREAS

In Citroën SpaceTourer you can access city car parks, underground parking, shopping centres and airport facilities without worrying about height restrictions, because it measures a useful 1.90m from road to roof.





36 CITROËN SPACETOURER BUSINESS



## AN EFFORTLESS WELCOME

Citroën SpaceTourer Business features large sliding side doors that can be motorised. For professional drivers and chauffeurs this is a real asset, as it means that passengers don't have to handle the door when getting in and out and everything can be controlled straight from the driving seat. The flexible interior is further enhanced by easy to fold 2nd row seats that allow quick, simple access to the 3rd row.

37



# 16 SAFETY SYSTEMS AND DRIVING AIDS



⊘ CAN BE DEACTIVATED



⊘ CAN BE DEACTIVATED



⊘ CAN BE DEACTIVATED



⊘ CAN BE DEACTIVATED



⊘ CAN BE DEACTIVATED



⊘ CAN BE DEACTIVATED



⊘ CAN BE DEACTIVATED



⊘ CAN BE DEACTIVATED



## GRIP CONTROL\*\*

A traction control system for all conditions, Grip Control has five modes, which you can select from using dial on the centre console. Choose Standard, Snow, Sand, Mud or ESP OFF (reactivated over 30mph) for exactly the grip you need.



## AUTOMATIC DIMMING HEADLIGHTS\*\*

When another vehicle is detected at night, this system instantly switches from full beam to dipped and then back again once the oncoming vehicle has passed. It works from 15mph upwards.



## CORNERING LIGHT FUNCTION

At corners and junctions where visibility can be compromised, you get the benefit of an extra illuminating beam on the inside of bends for maximum safety.



## ADAPTIVE CRUISE CONTROL\*\*

This innovative system uses a radar sensor to detect the vehicle in front and regulates your speed to ensure you keep a safe driving distance behind. Adaptive Cruise Control will stop the car completely if necessary to avoid a collision.



## COLLISION RISK ALERT\*\*

If there's any risk of collision with a vehicle or pedestrian, Collision Risk Alert sends you an immediate audible and visible warning. It works above 18mph using a camera fixed to the front of the car.



## HEAD-UP DISPLAY\*

Completely new to the segment, Head-up Display allows you to keep your eyes on the road whilst still having access to a range of essential driver information. This includes speed limit, vehicle speed, cruise control settings, navigation settings and collision risk alert.



## COFFEE BREAK ALERT

When it's time to take a break from your journey, this system lets you know. It works after 2 hours of continuous driving over 40mph.



## DRIVER ATTENTION ALERT

Using the windscreen-mounted camera and steering wheel movements, Driver Attention Alert can detect driver drowsiness and send both audible and visual alerts.

\* Dependent on version  
\*\* Optional



# 16 SAFETY SYSTEMS AND DRIVING AIDS



∅ CAN BE DEACTIVATED



∅ CAN BE DEACTIVATED



∅ CAN BE DEACTIVATED



∅ CAN BE DEACTIVATED



∅ CAN BE DEACTIVATED



## BLIND SPOT DETECTION\*

This monitoring technology detects vehicles travelling close behind, hidden in the rear view mirror's 'blind spot'. A bright orange warning light is activated in your wing mirror, providing an instant warning.



## LANE DEPARTURE WARNING SYSTEM\*\*

If lane line markings are crossed without the indicators being used, the windscreen-mounted camera sends audible and visual alerts to the driver, allowing quick and safe corrections.



## SPEED LIMIT SIGN RECOGNITION AND RECOMMENDATION

Recognising speed limits in real time, Speed Limit Sign Recognition uses an on board camera to read signs and send clear recommendations to the driver. Then you simply set the appropriate speed using the cruise control or speed limiter function.



## TRAILER STABILITY CONTROL\*

When you have towing equipment fitted, this technology works with the ESP system. If any swaying motion is detected, it uses the brakes to stabilise your trailer and keep you safely on course.



## ACTIVE SAFETY BRAKE\*\*

The Active Safety Brake is an advanced safety feature. Using the windscreen-mounted camera, it detects potential collisions with stationary or slowing vehicles ahead and automatically applies the brakes. This can help you to avoid accidents altogether at up to 18mph and significantly reduce impacts at higher speeds.



## HILL START ASSIST

On slopes that are steeper than 3%, Hill Start Assist makes sure that you don't roll backwards when releasing the brake pedal. With the vehicle held securely for a few seconds, you can move your foot calmly from the brake pedal to the accelerator and pull away smoothly.



## REVERSING CAMERA WITH TOP REAR VISION\*

When you select reverse, the touch screen can show a 180° view of what's behind your vehicle, complete with coloured lines to help estimate how far away any obstacles are. The camera also zooms in on nearby obstacles as they get closer.



## KEYLESS ENTRY AND START\*

When your hands are full, keyless entry lets you lock, unlock and start your vehicle without getting the key out.

\* Dependent on version  
\*\* Optional



CONFIGURE VEHICLE



BOOK A TEST DRIVE



OFFERS & FINANCE



FIND A DEALER



FOLLOW US





## NEW GENERATION POWER

There are 3 engines available for Citroën SpaceTourer, each featuring BlueHDI technology. Advanced and efficient, they greatly reduce nitrogen oxides [NO<sub>x</sub>] and take CO<sub>2</sub> emissions and fuel consumption lower than ever. In all conditions, the sophisticated suspension design ensures a fine balance of agility and driver comfort, and the all-new modular platform has achieved the maximum Euro NCAP 5 star safety rating.

The BlueHDI 180 S&S diesel engine can be chosen with the new 8-speed EAT8 automatic gearbox. Using Quickshift technology, it provides smooth, fast gear changes and delivers the lowest fuel consumption and CO<sub>2</sub> emissions in the segment.







## MORE DRIVEABILITY WITH GRIP CONTROL\*

As useful in everyday life as at holiday time, Grip Control means you can travel on all kinds of roads through all weathers with complete confidence. This advanced traction control feature optimises front wheel grip in changing conditions, optimising ride comfort to create a sense of calm and well-being inside the Citroën SpaceTourer.

\* Available as an option



## ULTRA - MODULAR



8P

### CITROËN SPACETOURER

Citroën SpaceTourer is available in 2 lengths and 2 trim levels, with 8 seats. Interiors offer real modularity thanks to the rail-mounted removable seats which mean optimum boot volume and generous passenger legroom. With the foldable seats Citroën SpaceTourer is ready to accommodate bulky items for leisure or home in minutes.



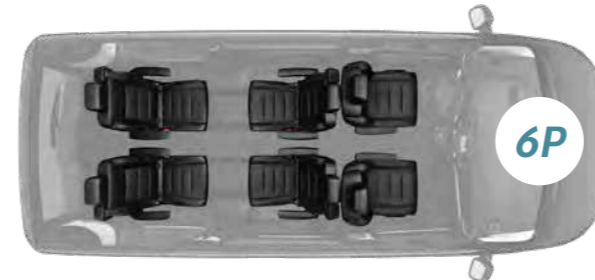
8P

### CITROËN SPACETOURER BUSINESS

Citroën SpaceTourer Business is available in 2 trim levels, with either an 8 or 9 seat configuration. Business versions have a style that rewards transport professionals' passengers (taxis, shuttle services...). Choose from the different seat configurations and the multitude of features offered to design a virtually 'tailor-made' Citroën SpaceTourer Business to meet your requirements.



9P



6P

### CITROËN SPACETOURER BUSINESS LOUNGE

Citroën SpaceTourer Business Lounge is available in 2 lengths, M and XL, with 6 or 7 seats. According to its use, it can become a 'mobile lounge'. The individual face-to-face leather seats and the sliding foldable table (available as an option) make it perfect for professional use (chauffeur-driven car, VIP transportation...).



7P

## ACCESSORIES

Easy to customise, Citroën SpaceTourer offers useful and robust accessories.



CITROËN RANGE OF ROOF BARS AND ROOF BOXES



TABLET HOLDER



ROOF BAR MOUNTED BIKE CARRIER



SMARTPHONE HOLDER



## EXTERIOR COLOURS



SOFT SAND (M)



RICH OAK (M)



CUMULUS GREY (M)



PLATINUM GREY (M)



TOURMALINE ORANGE (M)



PERLA NERA BLACK (M)



POLAR WHITE (F)



LAGOON BLUE

## TRIM OPTIONS



GREY 'MICA' CLOTH TRIM<sup>(1)</sup>  
Standard on Business



GREY 'YUMI' CLOTH TRIM<sup>(1)</sup>  
Standard on Feel



BLACK 'CLAUDIA' LEATHER TRIM<sup>(1)</sup>  
Standard on Flair and Business Lounge

## ALLOY WHEELS WHEEL TRIMS



16" SPYKE  
WHEEL TRIMS  
Standard on Business



17" PENTAGON  
WHEEL TRIMS  
Standard on Feel



17" CURVE  
ALLOY WHEELS  
Standard on Flair  
and Business Lounge, optional  
on Feel and Business

<sup>(1)</sup> And other accompanying materials.  
(M): Metallic - (F): Flat.

All equipment described in this brochure represents the technology of Citroën SpaceTourer. This brochure is based on an international version, therefore some images and specifications might not be representative of models sold in the UK. To know in detail equipment that is available as standard or optional, please refer to the Product Specification brochure or visit [citroen.co.uk](http://citroen.co.uk).

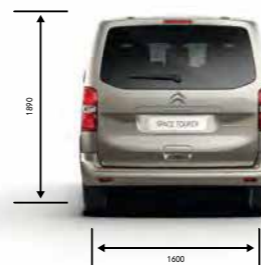


## ENGINES

FUEL CONSUMPTION & CO <sub>2</sub> EMISSIONS*						
Engines Euro 6.2 (Euro 6.d-TEMP)	Low MPG (Litres/100km)	Medium MPG (Litres/100km)	High MPG (Litres/100 km)	Extra High MPG (Litres/100 km)	Combined MPG (Litres/100 km)	CO <sub>2</sub> Emissions (g/km)
BlueHDi 120 S&S manual	40.6 - 46.4 (7.0 - 6.1)	43.3 - 51.1 (6.5 - 5.5)	45.8 - 53.9 (6.2 - 5.2)	34.7 - 41.0 (8.2 - 6.9)	40.1 - 47.1 (7.0 - 6.0)	128-130
BlueHDi 150 S&S manual	34.0 - 39.6 (8.3 - 7.1)	38.0 - 45.9 (7.4 - 6.1)	41.0 - 48.0 (6.9 - 5.9)	32.6 - 36.8 (8.7 - 7.7)	36.1 - 41.9 (7.8 - 6.7)	142-153
BlueHDi 180 S&S 8-speed automatic	31.6 - 33.8 (8.9 - 8.4)	37.0 - 43.4 (7.6 - 6.5)	40.9 - 47.7 (6.9 - 5.9)	32.6 - 37.3 (8.7 - 7.6)	35.5 - 40.6 (8.0 - 7.0)	144-152

\* Figures shown are for comparison purposes only; you should only compare these fuel consumption and CO<sub>2</sub> figures with other cars tested using the same technical standard. The fuel consumption you achieve, and CO<sub>2</sub> produced, in real world conditions will depend upon a number of factors: including the accessories fitted (post registration), variations in weather, driving styles and vehicle load. There is a new test WLTP (Worldwide Harmonised Light Vehicles Test Procedure) used to measure fuel consumption and CO<sub>2</sub> figures. The CO<sub>2</sub> figures shown are NEDCeq (New European Driving Cycle Equivalent), calculated using an EC correlation tool which converts WLTP figures to NEDC. These NEDCeq figures are based on the outgoing test cycle and will be used to calculate tax for the first registration. CO<sub>2</sub> and fuel economy figures may vary according to wheel fitment and optional extras fitted.

## DIMENSIONS



(1)M - (2)XL

With the added reassurance of a warranty, routine servicing and maintenance, as well as 24-hour roadside assistance, you are protected.



**• CITROËN WARRANTY**  
Every new Citroën car has the benefit of a 3 year\* warranty package, plus a 12 year anti-perforation\*\* warranty and a 3 year paint warranty.

**• CITROËN ASSISTANCE**  
Citroën Assistance brings rapid expert roadside assistance to you in an emergency in response to a telephone call. It comes free of charge for a full year and operates 24 hours a day in all parts of the UK and Europe. Services include nationwide recovery for both car and passengers, a home call service, replacement vehicle, hotel accommodation and vehicle storage if required. Please note, Citroën Assistance only applies to incidents covered by the new vehicle warranty, and excludes non-vehicle faults, such as running out of fuel, misfuelling, loss of keys, lock-ins, road traffic accidents and punctures/wheel changes. For more details, please contact Citroën at <https://www.citroen.co.uk/owner-services/emergency-assistance>

\* 2 years' unlimited warranty. No-fee customer option of 1 year's Dealer provided warranty, only on cars sourced from Citroën UK Limited. Note: Dealer provided warranty is limited to 60,000 miles for cars.  
\*\* Against all internal to external perforation to bodywork or underbody.



**• CITROËN MAINTENANCE**  
From roadside assistance to replacing wear and tear parts or regular servicing, with Citroën Maintenance you have total peace of mind. For a one-off fee or low monthly payment, our experienced engineers will take care of your Citroën, whatever happens. To find out more, contact your Citroën Dealer or Citroën Authorised Repairer.

**• CITROËN SERVICING**  
Available up to 1 year from your vehicle's registration date, but before its first chargeable service, a Citroën Servicing Package enables you to pay in advance for your vehicle's servicing needs for 3 years/35,000 miles. For further information, please contact your Citroën Dealer.

**• CITROËN MOT TEST**  
Once your vehicle is three years old, it requires an annual MOT Test. This is a legal requirement to check that it meets road safety and environmental standards. Our nationwide network of Citroën Authorised Repairers know your Citroën best, so if your vehicle's MOT Test is due, why not contact your local Citroën dealer? You can be confident that your vehicle will be looked after by one of our expert trained Citroën Technicians, nominated by DVSA as accredited MOT Testers. Plus, whilst your vehicle is with us, we'll carry out a free manufacturer diagnostic test, check for any new technical updates and carry them out for free - that's the advantage of getting your test done by the people who really know your Citroën.

## INSPIRÉ PAR VOUS



**DOWNLOAD THE MYCITROËN APP**  
on your smartphone and benefit from information and services personalised to your Citroën vehicle.



**DOWNLOAD THE SCAN MY CITROËN MOBILE APP**  
Get all the vital information at your fingertips. Scan features and components and access details of the exact new Citroën that you're interested in.



**RATE, SUBMIT AND SHARE YOUR OPINION ABOUT YOUR VEHICLE**  
or in a Citroën Dealership when purchasing or servicing your vehicle. Ratings and reviews are published on the Citroën's website.

**CITROËN prefers TOTAL** - Note: Images and specification descriptions are dependent on trim level and options specified. Every endeavour has been made to ensure that the information and details contained in this brochure were accurate at the time of going to press. However the company reserves the right, whilst preserving the essential characteristics of the models described, to introduce at any time modifications, changes of details, equipment or accessories. Every effort will be made to bring this brochure up to date, but in order to avoid any misunderstanding please consult your Dealer. For full details of Citroën Care of Car and Driver, please see the full manufacturer's price list. The Citroën Website contains full information on all Citroën products and offers available in the UK, together with details of our environmental and recycling policies. The site address is [www.citroen.co.uk](http://www.citroen.co.uk)





TO FIND OUT MORE  
visit [citroen.co.uk](http://citroen.co.uk)

**Motability** To find out more about Motability, please contact your local dealer or visit [citroen.co.uk/motability](http://citroen.co.uk/motability)

K192ZE May 2019

 CONFIGURE VEHICLE

 BOOK A TEST DRIVE

 OFFERS & FINANCE

 FIND A DEALER

    FOLLOW US





## CITROËN SPACETOURER

PRODUCT SPECIFICATIONS

INSPIRÉ  
PAR VOUS  
SINCE 1919

 CONFIGURE VEHICLE

 BOOK A TEST DRIVE

 OFFERS & FINANCE

 FIND A DEALER

    FOLLOW US



## CITROËN SPACETOURER AND SPACETOURER BUSINESS MODELS

INCLUDE THE FOLLOWING EQUIPMENT AS STANDARD:

### Safety and Security

- ABS with Electronic Brakeforce Distribution (EBD)
- Airbags – Driver and front passenger airbags, driver and front passenger side airbags (head and thorax)
- Alarm (volumetric)
- Automatic door locking when moving off
- Cruise control and speed limiter
- DAA1 (Driver attention alert system)
- Electric child locking functionality on rear doors
- Emergency fuel cut off (in event of collision)
- Exterior temperature indicator with ice warning
- Front optimised safety headrests and rear retractable headrests (x3), height-adjustable
- Front three-point retractable seatbelts
- Front ventilated disc brakes, rear disc brakes
- Gear Shift Indicator
- Headlights left on / door open audible warning
- Hill start assist function
- Isofix child seat fittings (x3 sets including top tether) for rear seats
- Rear three-point retractable seatbelts (x3)
- Seatbelt not fastened or unfastened audible and visual alert for front seats
- Steel full size spare wheel
- Tyre pressure sensors (indirect)

### Comfort and Convenience

- Acoustic Pack (Acoustic windscreen and rear side windows)
- Coat hooks (driver and passenger side)
- Cup-holders (x2, dashboard mounted)
- Cup-holders (x2, located in row 3 side panels)
- Electric and heated door mirrors
- Electric power steering with reach and rake-adjustable steering column
- Front interior light with reading spotlights (x2)
- Grab handles, driver and passenger side, retractable with damping
- Heated rear windscreen with rear wash wipe
- Illuminated boot area

### Comfort and Convenience

- Illuminated vanity mirrors
- Mechanical handbrake
- Multifunction trip computer
- One-touch electric front windows with pinch protection
- Parking sensors - rear
- Reading spotlights (x3), in rear
- Rear side windows: dark tinted (70% opacity) fixed position row 2/3
- Remote central locking with deadlocks
- Twin sliding rear doors

### Interior Features

- Fixing rings (x4) in load area (M versions)
- Fixing rings (x6) in load area (XL versions)
- Gear lever – automatic with rotary 'drive mode selector'
- Gear lever – manual with black gear knob and leather effect gaiter trim (6 speed gearbox)
- Instrument display panel: white LCD matrix display and 4 x dials (rev counter, speedo, fuel gauge and water temperature)
- Plastic coated steering wheel with multifunction controls on steering column
- Roof lining – light grey
- Satin chrome finish to front interior door handles

### Seating

- Driver and front passenger seat adjustable armrest
- Driver and front passenger seat mechanical longitudinal adjustment
- Driver and front passenger seat mechanical back rest angle adjustment
- Driver seat mechanical height adjustment
- Driver seat mechanical lumbar adjustment

### In-Car Entertainment

- Bluetooth® telephone facility
- DAB radio (Digital Audio Broadcasting)
- Mirror Screen®: Apple CarPlay™ and Android Auto
- USB socket
- 4-speaker radio + 4 tweeters, MP3 compatible
- 7" capacitive touchscreen
- 12V sockets (x3) (dashboard, lower glovebox and load area)

### Exterior Features

- Body colour door mirrors
- Body colour exterior door handles
- Body colour front and rear bumpers (centre of rear bumper features black insert on XL versions)
- Body colour side rubbing strips
- Black radiator grille with chrome edged chevrons
- Roof mounted antenna

### Exterior Lighting and Visibility

- Halogen front fog lights (includes cornering assist function)
- Halogen headlights
- Halogen rear fog lights
- Halogen rear lights (including braking and turn signal functions)
- Halogen rear numberplate lights (x2)
- Halogen third brake light
- LED daytime running lights
- **Visibility pack** – automatic headlights, automatic windscreen wipers, electrochrome rear view mirror (auto dimming), 'Follow me home' headlights



RANGE 3



# OVER TO YOU

THIS IS WHERE YOUR CITROËN SPACETOURER BEGINS TO TAKE SHAPE.

**FEEL. START YOUR JOURNEY.**  
CITROËN SPACETOURER FEEL SPECIFICATION  
IN ADDITION TO STANDARD INCLUDES:

**Comfort and Convenience**

- Automatic dual zone climate control
- Boot load restraint net
- Child observation mirror
- Map pockets on front seat backs
- Rear seat 'aviation style' air conditioning panel:
  - 6 x ceiling mounted air vents
  - temperature and fan speed adjustment
  - floor mounted air vents

**Interior Features**

- Dashboard: closed central storage compartment
- Decorative inlays: Delice grey
- Flooring: black carpet

**Seating**

- Grey 'Yumi' cloth trim
- Row 2: 3 seater bench (1/3 2/3 split) on rails with longitudinal and backrest angle adjustment
- Row 2: removable seats
- Row 3: 3 seater bench (1/3 2/3 split) on rails (includes Isofix child seat fittings, x3 sets including top tether)
- Tray tables on front seat backs
- Window blinds (row 2)

**In Car Entertainment**

- 12V sockets (x4) (dashboard, lower glovebox, rear cabin and load area)

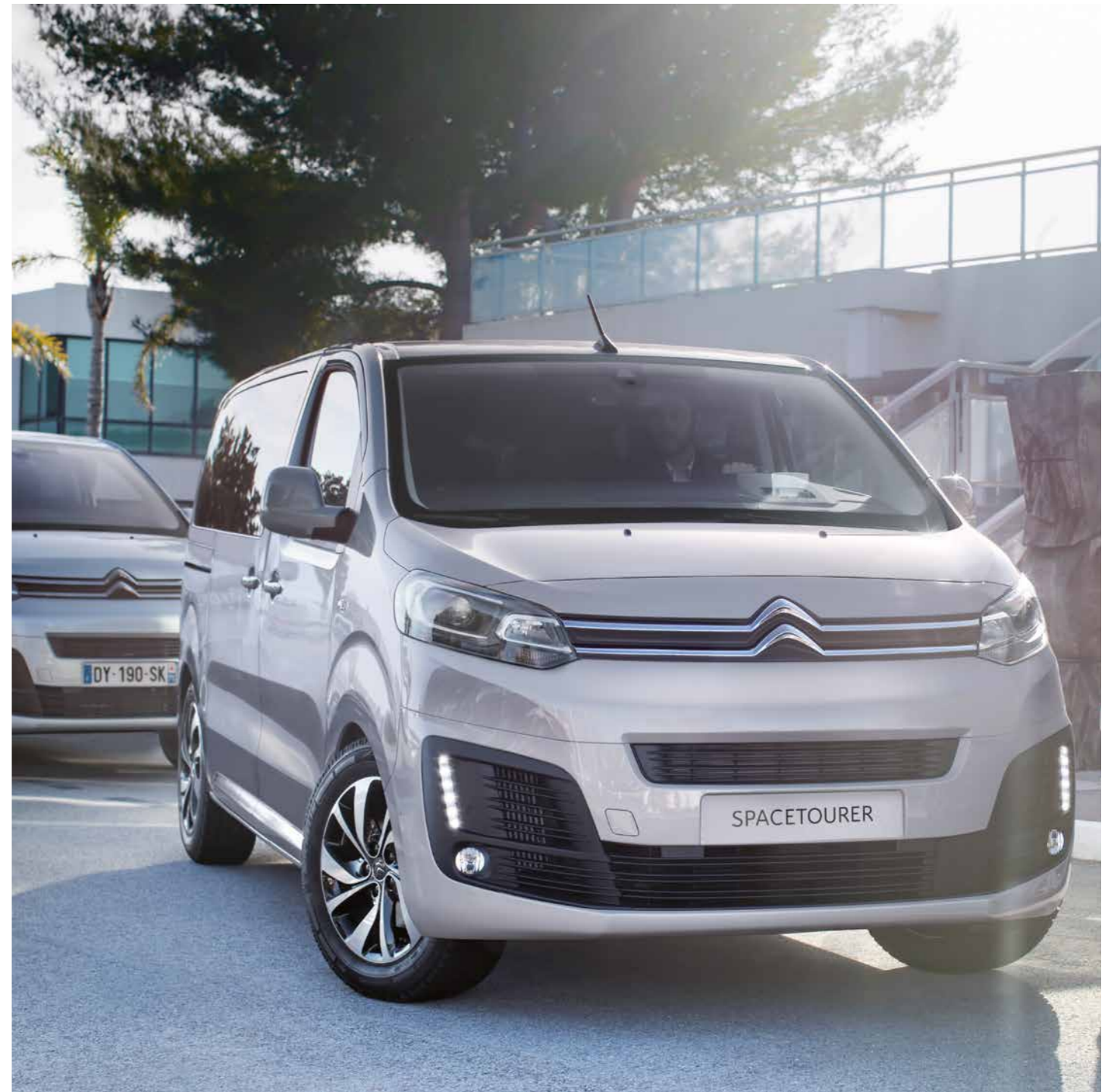
**Exterior Style**

- 17" 'Pentagon' wheel trims



Feel

DIESEL ENGINE AVAILABILITY	M	XL
BlueHDi 120 S&S 6-speed manual	•	•
BlueHDi 150 S&S 6-speed manual	•	•
BlueHDi 120 S&S EAT8 8-speed auto	•	



RANGE 5



# OVER TO YOU

THIS IS WHERE YOUR CITROËN SPACETOURER BEGINS TO TAKE SHAPE.

## FLAIR. UNDERSTATED LUXURY.

CITROËN SPACETOURER FLAIR SPECIFICATION  
IN ADDITION TO FEEL INCLUDES:

### Safety and Security

- Airbags: Adaptive driver and front passenger airbags
- Airbags: Driver and front passenger side airbags (head and thorax)
- Airbags: Front and rear curtain airbags
- Blind spot monitoring system
- Head up display
- Citroën Connect Box
- Programmable cruise control and speed limiter

### Comfort and Convenience

- Additional non-programmable heating (Webasto)
- Additional soundproofing to passenger compartments
- Footwell illumination (seating in row 1 and 2)
- Front interior light (x1 LED) with reading spotlights (x2 LED)
- Fuel filler door: electrically lockable (linked to central locking)
- Parking sensors – front and rear
- Keyless entry and start
- Power folding door mirrors
- Reading spotlights LED (x3), in rear
- Rear side windows: extra-dark tinted (approx 90% opacity) fixed position row 2/3
- Split opening tailgate
- Twin 'hands free' electric sliding rear doors (includes foot operated sensors)
- 180° colour reversing camera

### Interior Features

- Decorative inlays: Brushed aluminium
- Gear lever - manual with satin chrome and leather gear knob and leather effect gaiter trim
- Instrument display panel: 3.5" colour display, 4 x dials (rev counter and speedo with illuminated chrome plate surround, plus fuel gauge and water temperature)
- Mistral floor mats with stitch detail
- Mistral full-grain multi-function leather steering wheel with stitch detail

### Seating

- Claudia Mistral leather seat trim
- Driver and front passenger seat electric lumbar adjustment
- Driver and front passenger seat electric multi-way adjustment
- Driver and front passenger seat massage function
- Driver and front passenger seat heating
- Row 3 additional seats on rails, (1/3 2/3), removable, with x3 Isofix mounting points. Includes longitudinal and back rest angle adjustment.

### In-Car Entertainment

- Citroën Connect Nav including TomTom® Live updates (3 year subscription)
- HiFi Pack (5 speakers + 4 tweeters and subwoofer)
- Voice recognition (radio, navigation and telephony features)

### Exterior Style

- Body colour exterior door handles with chrome detail
- Panoramic cielo glass roof including 2x manual blackout blinds and 'aviation style' centre panel
- 17" 'Curve' bi-tone alloy wheels

### Lighting and Visibility

- Xenon headlights



Flair

DIESEL ENGINE AVAILABILITY	M	XL
BlueHDi 150 S&S 6-speed manual	•	
BlueHDi 180 S&S EAT8 8-speed auto	•	•

RANGE 7



CONFIGURE VEHICLE



BOOK A TEST DRIVE



OFFERS & FINANCE



FIND A DEALER



YouTube

FOLLOW US



# BUSINESS RANGE

## BUSINESS. ULTIMATE PROFESSIONALISM.

CITROËN SPACETOURER BUSINESS IN ADDITION TO THE STANDARD SPECIFICATION INCLUDES:

### Comfort and Convenience

- Air conditioning

### Interior Features

- Decorative inlays: Aluminium grey
- Flooring: TPO plastic

### Seating

- Grey 'Mica' cloth trim
- Dual front passenger bench seat with under-seat storage (free of charge upgrade, in lieu of single front passenger seat with armrest)
- Row 2: 3 seater bench (monobloc) anchored to floor
- Row 2: removable seats
- Row 3: 3 seater bench (monobloc) anchored to floor (foldable)

### Exterior Style

- 16" 'Spyke' wheel trims



## BUSINESS LOUNGE. HIGH CLASS ELEGANCE.

CITROËN SPACETOURER BUSINESS LOUNGE SPECIFICATION IN ADDITION TO BUSINESS INCLUDES:

### Safety and Security

- Airbags – Front and rear curtain airbags
- Head up display
- Citroën Connect Box
- Programmable cruise control and speed limiter

### Comfort and Convenience

- Additional non-programmable heating (Webasto)
- Additional soundproofing to passenger compartments
- Automatic dual zone climate control
- Footwell illumination (seating in row 1 and 2)
- Front interior light (x1 LED) with reading spotlights (x2 LED)
- Fuel filler door: electrically lockable (linked to central locking)
- Head-up display
- Map pockets on front seat backs
- Keyless entry and start
- Power folding door mirrors
- Reading spotlights LED (x3), in rear
- Rear seat 'aviation style' air conditioning panel:
  - 6 x ceiling mounted air vents
  - temperature and fan speed adjustment
  - floor mounted air vents
- Rear side windows: extra-dark tinted (Approx 90% opacity) fixed position row 2 /3
- Twin 'hands free' electric sliding rear doors (includes foot operated sensors)

### Interior Features

- Decorative inlays: Brushed aluminium
- Gear lever - manual with satin chrome and leather gear knob and leather effect gaiter trim
- Instrument display panel: 3.5" colour display, 4 x dials (rev counter and speedo with illuminated chrome plate surround plus fuel gauge and water temperature)
- Mistral floor mats with stitch detail
- Mistral full-grain multi-function leather steering wheel with stitch detail

### In Car Entertainment

- Citroën Connect Nav including TomTom® Live updates (3 year subscription)
- HiFi Pack (5 speakers + 4 tweeters and subwoofer)
- Voice recognition (radio, navigation and telephony features)
- 12V sockets (x4) (dashboard, lower glovebox, rear cabin and load area)

### Exterior Lighting and Visibility

- Xenon headlights

### Interior Features

- Dashboard: closed central storage compartment
- Tray tables on front seat backs
- Window blinds (row 2)

### Seating

- Claudia Mistral leather seat trim
- Driver and front passenger seat electric lumbar adjustment
- Driver and front passenger seat electric multi-way adjustment
- Driver and front passenger seat massage function
- Driver and front passenger seat heating
- Rear armchairs (x4) include:
  - armrests on both sides
  - removable and reversible (can be fitted backwards for lounge style seating)
  - Isofix mounting points and top tethers on all seats
  - Rail mounted with longitudinal and back rest angle adjustment

### Exterior Features

- Body colour exterior door handles with chrome detail
- Panoramic cielo glass roof including 2x manual blackout blinds and 'aviation style' centre panel
- 17" 'Curve' bi-tone alloy wheels



	Business		Business Lounge
DIESEL ENGINE AVAILABILITY	M	M	XL
BlueHDi 120 S&S 6-speed manual	•		
BlueHDi 120 S&S EAT8 8-speed auto	•		
BlueHDi 150 S&S 6-speed manual	•		
BlueHDi 180 S&S EAT8 8-speed auto		•	•

# EQUIPMENT SPECIFICATION

To make choosing straightforward and enjoyable, we've worked hard to ensure that the information in this brochure is accurate at the time it was created in December 2019. It's important to remember that Citroën can introduce changes to the equipment and accessories featured, although these wouldn't alter the essential character and design of the models. Naturally the images and specifications are also dependent on trim level and any options included.

We know how important it is to present the right facts and figures, so our brochures are regularly updated. However, it is important that you consult your dealer when ordering your vehicle to ensure you are advised of the latest specifications and equipment.

Standard equipment ●  
Optional factory fitted equipment ○

Option availability varies according to version/engine/trim level. Some options are only available as part of a pack. Please refer to the options page for further information.



Cruise control with speed limiter

	Feel	Flair	Business	Business Lounge
<b>BODY STYLE</b>				
5 Door MPV (Multi Purpose Vehicle)	●	●	●	●
<b>SAFETY &amp; SECURITY</b>				
ABS (Anti-lock Braking System) with Electronic Brakeforce Distribution (EBD)	●	●	●	●
Airbags: Adaptive driver and front passenger airbags	●	●	●	●
Airbags: Driver and front passenger side airbags (head and thorax)	●	●	●	●
Airbags: Front and rear curtain airbags	○	●	○	●
Alarm (volumetric)	●	●	●	●
Automatic door locking when moving off	●	●	●	●
Cruise control and speed limiter	●	●	●	●
DAA1 (Driver attention alert system)	●	●	●	●
Blind spot monitoring system	○	●	○	○
Electric child locking functionality on rear doors	●	●	●	●
Emergency fuel cut off (in event of collision)	●	●	●	●
Exterior temperature indicator with ice warning	●	●	●	●
Front optimised safety headrests and rear retractable headrests (x3), height-adjustable	●	●	●	●
Front three-point retractable seatbelts	●	●	●	●
Front ventilated disc brakes, rear disc brakes	●	●	●	●
Gear Shift Indicator	●	●	●	●



LED Daytime Running Lights

	Feel	Flair	Business	Business Lounge
<b>SAFETY &amp; SECURITY</b>				
Grip Control®	○	○	○	○
Headlights left on / door open audible warning	●	●	●	●
Head up display	○	●	○	●
Hill start assist function	●	●	●	●
Isofix child seat fittings (x3 sets including top tether) for rear seats	●	●	●	●
Citroën Connect Box	○	●	○	●
Programmable cruise control and speed limiter		●		●
Rear three-point retractable seatbelts (x3)	●	●	●	●
Seatbelt not fastened or unfastened audible and visual alert for front seats	●	●	●	●
Steel full size spare wheel	●	●	●	●
Tyre pressure sensors (indirect)	●	●	●	●
<b>COMFORT &amp; CONVENIENCE</b>				
Acoustic pack (acoustic windscreen and rear side windows)	●	●	●	●
Additional non-programmable heating (Webasto)		●		●
Additional soundproofing to passenger compartments		●		●
Automatic dual zone climate control	●	●	○	●
Boot load restraint net	●	●		
Child observation mirror	●	●		
Coat hooks (driver and passenger side)	●	●	●	●



ABS with Electronic Brakeforce Distribution (EBD)

	Feel	Flair	Business	Business Lounge
<b>COMFORT &amp; CONVENIENCE</b>				
Cup-holders (x2, dashboard mounted)	●	●	●	●
Cup-holders (x2, located in row 3 side panels)	●	●	●	●
Electric and heated door mirrors	●	●	●	●
Electric power steering with reach and rake-adjustable steering column	●	●	●	●
Footwell illumination (seating in row 1 and 2)		●		●
Front interior light with reading spotlights (x2)	●		●	
Front interior light (x1 LED) with reading spotlights (x2 LED)		●		●
Fuel filler door: electrically lockable (only available as part of easy entry pack WZ09)	○	●	○	●
Grab handles, driver and passenger side, retractable with damping	●	●	●	●
Heated rear windscreen with rear wash wipe	●	●	●	●
Illuminated boot area	●	●	●	●
Illuminated vanity mirrors	●	●	●	●
Map pockets on front seat backs	●	●	●	●
Mechanical handbrake	●	●	●	●
Multifunction trip computer	●	●	●	●
One-touch electric front windows with pinch protection	●	●	●	●
Parking sensors - rear	●	●	●	●





Split opening tailgate



Panoramic glass roof (2 panels)



Coat hooks (driver and passenger side)



Xenon lights

	Feel	Flair	Business	Business Lounge
--	------	-------	----------	-----------------

COMFORT & CONVENIENCE	Feel	Flair	Business	Business Lounge
Parking sensors - front and rear	○	●	○	○
Keyless entry and start	○	●	○	●
Power folding door mirrors	○	●	●	●
Reading spotlights (x3), in rear	●		●	
Reading spotlights, LED (x3), in rear		●		
Rear seat 'aviation style' air conditioning panel	●	●	○	●
Rear seat 'aviation style' air conditioning panel: x6 ceiling mounted air vents	●	●	○	●
Rear seat 'aviation style' air conditioning panel: temperature and fan speed adjustment	●	●	○	●
Rear seat 'aviation style' air conditioning panel: floor mounted air vents	●	●	○	●
Rear side windows: dark tinted (70% opacity) fixed position row 2/3	●		●	
Remote central locking with deadlocks	●	●	●	●
Split opening tailgate	○	●	○	○
Twin sliding rear doors	●	○	●	○
Twin 'hands free' electric sliding rear doors (includes foot operated sensors)	○	●	○	●
180° colour reversing camera	○	●	○	○

	Feel	Flair	Business	Business Lounge
--	------	-------	----------	-----------------

INTERIOR FEATURES	Feel	Flair	Business	Business Lounge
Dashboard: chrome air vent surround trim	●	●	●	●
Dashboard: closed central storage compartment	●	●		●
Dashboard: lower glovebox, open without lid	●	●	●	●
Dashboard: upper glovebox, with lid and illumination	●	●	●	●
Decorative inlays to dashboard, door and side panels	●	●	●	●
Decorative inlays: Anodised blue	●			
Decorative inlays: Brushed aluminium		●		●
Decorative inlays: Aluminium grey	●		●	
Door pockets: front, (including storage for 1.5L bottles)	●	●	●	●
Door pockets: rear, (including storage for 500ml bottles)	●	●	●	●
Fixing rings (x4) in load area (M versions)	●	●	●	●
Fixing rings (x6) in load area (XL versions)	●	●	●	●
Flooring: black carpet	●	●		●
Gear lever - automatic with rotary 'drive mode selector'		●	●	●
Gear lever - manual with black gear knob and leather effect gaiter trim (6 speed gearbox)	●		●	
Gear lever - manual with satin chrome and leather gear knob and leather effect gaiter trim (6 speed gearbox)		●		●
Instrument display panel: white LCD matrix display, 4 x dials (rev counter, speedo, fuel gauge and water temp)	●		●	

	Feel	Flair	Business	Business Lounge
--	------	-------	----------	-----------------

INTERIOR FEATURES	Feel	Flair	Business	Business Lounge
Instrument display panel: 3.5" colour display, 4 x dials (rev counter and speedo with illuminated chrome plate surround, plus fuel gauge and water temp). Only available with option RGO4 on Feel and Business versions	○	●	○	●
Mistral floor mats with stitch detail		●		●
Mistral full-grain multi-function leather steering wheel with stitch detail		●		●
Plastic coated steering wheel with multifunction controls on steering column	●	●	●	●
INTERIOR FEATURES				
SEATING				
Roof lining - light grey	●	●	●	●
Satin chrome finish to front interior door handles	●	●	●	●
Driver seat mechanical height adjustment	●		●	
Driver seat mechanical lumbar adjustment	●		●	
Driver and front passenger seat adjustable armrest	●	●	●	●
Driver and front passenger seat mechanical longitudinal adjustment	●		●	
Driver and front passenger seat mechanical back rest angle adjustment	●		●	

	Feel	Flair	Business	Business Lounge
--	------	-------	----------	-----------------

INTERIOR FEATURES	Feel	Flair	Business	Business Lounge
SEATING				
Driver and front passenger seat electric lumbar adjustment		●		●
Driver and front passenger seat electric multi-way adjustment		●		
Driver and front passenger seat massage function		●		
Driver and front passenger seat heating		●		
Row 2: 3 seater bench (1/3 2/3 split) on rails with longitudinal and backrest angle adjustment	●	●		
Row 2: removable seats	●	●	●	●
Row 3: 3 seats on rails, (1/3 2/3), removable, with 3 x Isofix mounting points. Includes longitudinal and back rest angle adjustment (In lieu of 2 x row 3 armchairs on Business Lounge)	●	●		○
Grey 'Yumi' cloth trim	●			
Claudia Mistral leather seat trim		●		●
Grey 'Mica' cloth trim			●	
Tray tables on front seat backs	●	●		●
Window blinds: (row 2)	●	●		●



Tilt and height-adjustable driver's seat and front passenger's seat



7 inch touchscreen

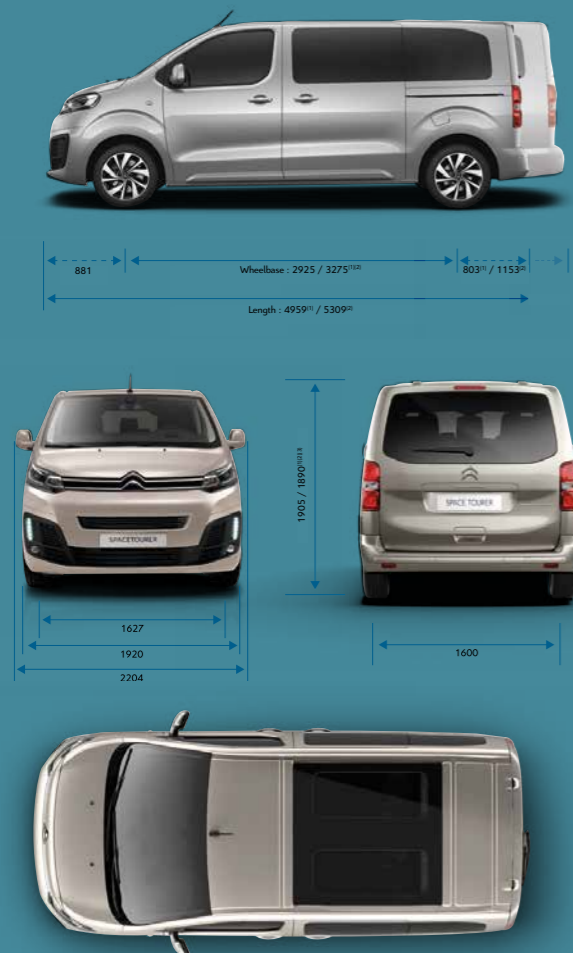
	Feel	Flair	Business	Business Lounge
<b>IN-CAR ENTERTAINMENT</b>				
Auxiliary point	•	•	•	•
Bluetooth® telephone facility	•	•	•	•
Citroën Connect Nav: includes TomTom® Live updates (3 year subscription)	○	•	○	•
DAB Radio (Digital Audio Broadcasting)	•	•	•	•
HIFI Pack (5 speakers + 4 tweeters and subwoofer)		•		•
Mirror Screen®: (Apple CarPlay™, Android Auto)	•	•	•	•
USB Socket	•	•	•	•
Voice recognition (radio, navigation and telephony features)	○	•	○	•
4-Speaker radio + 4 tweeters, MP3 compatible	•	•	•	•
7" capacitive touchscreen	•	•	•	•
12 V sockets (x3) (dashboard, lower glovebox and load area)	•	•		•
230v socket (linked to 'Easy Entry' pack WZ09)	○	•	○	•
<b>EXTERIOR FEATURES</b>				
Body colour door mirrors	•	•	•	•
Body colour exterior door handles	•		•	
Body colour exterior door handles with chrome detail	○	•	○	•
Body colour front and rear bumpers (centre of rear bumper features black insert on XL versions)	•	•	•	•

	Feel	Flair	Business	Business Lounge
<b>EXTERIOR FEATURES</b>				
Body colour side rubbing strips	•	•	•	•
Panoramic cielo glass roof (including x2 manual blackout blinds and 'aviation style' centre panel)	○	•	○	•
Radiator grille: chrome edge trim and black facets	•	•	•	•
Roof mounted antenna	•	•	•	•
17" 'Pentagon' wheel trims (linked to Grip Control option ZHCL on Business)	•		○	
17" 'Curve' bi-tone alloy wheels	○	•	○	•
<b>EXTERIOR LIGHTING AND VISIBILITY</b>				
Halogen rear numberplate lights (x2)	•	•	•	•
Halogen third brake light	•		•	•
LED daytime running lights	•	•	•	•
<b>Visibility pack:</b> automatic lights	•	•	•	•
<b>Visibility pack:</b> automatic windscreen wipers	•	•	•	•
<b>Visibility pack:</b> electrochrome rear view mirror (auto dimming)	•	•	•	•
<b>Visibility pack:</b> 'follow me home headlamps'	•	•	•	•
Xenon headlights	○	•	○	•





# DIMENSIONS



\* Not applicable to Business VIP version due to a different seat configuration

- 1 M
- 2 XL
- 3 1940 max with increased GVW
- 4 Vehicle in running order
- 5 In a standard configuration (without third row)

VERSIONS	M	XL
<b>Exterior dimensions (mm)</b>		
Length	4959	5309
Front overhang	881	
Wheelbase	3275	
Rear overhang	803	1153
Width (excluding door mirrors)	1920	
Width (door mirrors unfolded)	2204	
Front track at wheel centre	1627	
Rear track at wheel centre	1600	
Height <sup>4</sup>	1890	
<b>Dimensions of rear doors (mm)</b>		
Maximum width of rear doors	1212	
Maximum height of rear doors	1177	
Minimum load sill height <sup>4</sup>	584	584
Maximum load sill height <sup>4</sup>	653	664
<b>Dimensions of side doors (mm)</b>		
Width of aperture	933	
Height of aperture	1181	
<b>Interior dimensions (mm)</b>		
Maximum load height	1337	1339
Maximum load length (with folding 1st row passenger seat)	3161	2763
Load length (behind the 1st row)	2413	2763
Load width between wheel arches	1228	
Maximum waist width 1st row / 2nd row / 3rd row	1515 / 1586 / 1570	
<b>Interior volumes (L)</b>		
Boot load volume (seat height) <sup>5</sup>	1700	2100
Boot load volume (roof height) <sup>5</sup>	2550	3100
Maximum number of seats (Business)	8 (9*)	8 (9*)
<b>Turning circle (m)</b>		
Turning circle between kerbs	12.4	
Turning circle between walls	12.9	

## EXTERIOR COLOURS



Soft Sand (M)



Rich Oak (M)



Cumulus Grey (M)



Platinum Grey (M)



Tourmaline Orange (M)



Perla Nera Black (M)



Polar White (F)



Lagoon Blue\* (F)  
Not available on Flair, Business and Business Lounge

## INTERIOR TRIM



Grey 'Yumi' cloth trim  
Standard on Feel



Black 'Claudia' leather trim  
Standard on Flair and Business Lounge



Grey 'Mica' cloth trim  
Standard on Business

## WHEELS



17" Pentagon wheel trims  
Standard on Feel



16" Spyke wheel trims  
Standard on Business



17" Curve alloy wheels  
Standard on Flair and Business Lounge, optional on Feel and Business

\*Image shown not to UK specification, Lagoon Blue paint finish incorporates a gloss black finish to door mirror shells, door handles, side rubbing strips plus tailgate upper and lower handles  
Please note: colours and pictures shown are for illustration purposes only. Please consult your Dealer for definitive colour and trim/upholstery details.

# FAMILY RANGE TECHNICAL SPECIFICATION

ENGINE	BlueHDi 120 S&S 6-speed manual	
	M	XL
Capacity (cc)	1499	
Max power CEE (kW/rpm)	88/3500	
Max torque CEE (Nm/rpm)	TBC	
Fuel system	Diesel – High pressure turbo-charged direct injection	
Euro status	Euro 6.2	
Stop & Start system	•	
<b>TRANSMISSION</b>		
Gearbox	Manual	
Number of gears	6	
<b>PERFORMANCE</b> (All figures driver alone)		
Max speed (mph)	99	
0-60mph (secs)	12.0	
<b>ECONOMY* MPG (Litres/100km)</b> (Official Government test fuel consumption figures)		
Low	40.6 - 46.4 (7.0 - 6.1)	
Medium	43.3 - 51.1 (6.5 - 5.5)	
High	45.8 - 53.9 (6.2 - 5.2)	
Extra High	34.7 - 41.0 (8.2 - 6.9)	
Combined	40.1 - 47.1 (7.0 - 6.0)	
<b>CO<sub>2</sub> EMISSIONS* (g/km)</b>		
128 - 130		
<b>WEIGHTS (kg) with 8 seats</b> Please note: the maximum plated weights must not be exceeded		
Gross Vehicle Weight (GVW)	2695	2730
Mass in service	1925	1930
Kerb weight	1660	1660
Gross Train Weight (GTW)	4095	4130
Maximum braked trailer weight	1800	1800
Maximum towball weight	72	72
<b>BRAKES</b> Front/Rear		
Vent. discs/discs		
<b>TURNING CIRCLE</b> between kerbs (m)		
12.4		
<b>FUEL TANK CAPACITY</b> Litres		
69		

\*Figures shown are for comparison purposes only; you should only compare these fuel consumption and CO<sub>2</sub> figures with other cars tested using the same technical standard. The fuel consumption you achieve, and CO<sub>2</sub> produced, in real world conditions will depend upon a number of factors: including the accessories fitted (post registration), variations in weather, driving styles and vehicle load. There is a new test WLTP (Worldwide Harmonised Light Vehicles Test Procedure) used to measure fuel consumption and CO<sub>2</sub> figures. The CO<sub>2</sub> figures shown are NEDCeq (New European Driving Cycle Equivalent), calculated using an EC correlation tool which converts WLTP figures to NEDC. These NEDCeq figures are based on the outgoing test cycle and will be used to calculate tax for the first registration.

ENGINE	BlueHDi 120 EAT8 S&S 8-speed automatic		BlueHDi 150 S&S 6-speed manual		BlueHDi 180 S&S EAT8 automatic	
	M	XL	M	XL	M	XL
Capacity (cc)	1997		1997		1997	
Max power CEE (kW/rpm)	90/3750		110/4000		130/3750	
Max torque CEE (Nm/rpm)	340/1750		370/2000		400/2000	
Fuel system	Diesel – High pressure turbo-charged direct injection		Diesel – High pressure turbo-charged direct injection		Diesel – High pressure turbo-charged direct injection	
Euro status	Euro 6.2		Euro 6.2		Euro 6.2	
Stop & Start system	•		•		•	
<b>TRANSMISSION</b>						
Gearbox	Automatic		Manual		Automatic	
Number of gears	8		6		8	
<b>PERFORMANCE</b> (All figures driver alone)						
Max speed (mph)	115		114		114	
0-60mph (secs)			10.3		8.8	
<b>ECONOMY* MPG (Litres/100km)</b> (Official Government test fuel consumption figures)						
Low	33.3 - 35.3 (8.5 - 8.0)		34.0 - 39.6 (8.3 - 7.1)		31.6 - 33.8 (8.9 - 8.4)	
Medium	37.0 - 43.4 (7.6 - 6.5)		38.0 - 45.9 (7.4 - 6.1)		37.0 - 43.4 (7.6 - 6.5)	
High	42.0 - 48.4 (6.7 - 5.8)		41.0 - 48.0 (6.9 - 5.9)		40.9 - 47.7 (6.9 - 5.9)	
Extra High	38.3 - 33.5 (8.4 - 7.4)		32.6 - 36.8 (8.7 - 7.7)		32.6 - 37.3 (8.7 - 7.6)	
Combined	41.5 - 36.4 (7.8 - 6.8)		36.1 - 41.9 (7.8 - 6.7)		35.5 - 40.6 (8.0 - 7.0)	
<b>CO<sub>2</sub> EMISSIONS* (g/km)</b>						
146 - 151		142 - 153		144 - 152		
<b>WEIGHTS (kg) with 8 seats</b> Please note: the maximum plated weights must not be exceeded						
Gross Vehicle Weight (GVW)	2810	2810	2750	2785	2780	2800
Mass in service	1845	1845	1990	2023	2020	2032
Kerb weight	1770	1770	1726	1759	1763	1770
Gross Train Weight (GTW)	4900	4900	4650	4685	4900	4900
Maximum braked trailer weight	2300	2300	2300	2300	2300	2300
Maximum towball weight	92	92	92	92	92	92
<b>BRAKES</b> Front/Rear						
Vent. discs/discs						
<b>TURNING CIRCLE</b> between kerbs (m)						
12.4		12.4		12.4		
<b>FUEL TANK CAPACITY</b> Litres						
69		69		69		



# BUSINESS RANGE TECHNICAL SPECIFICATION

ENGINE	BlueHDi 120 S&S 6-speed manual	
	BUSINESS M	BUSINESS M & DUAL FRONT PASSENGER SEAT
Capacity (cc)	1499	
Max power CEE (kW/rpm)	88/3500	
Max torque CEE (Nm/rpm)	TBC	
Fuel system	Diesel – High pressure turbo-charged direct injection	
Euro status	Euro 6.2	
Stop & Start system	•	
<b>TRANSMISSION</b>		
Gearbox	Manual	
Number of gears	6	
<b>PERFORMANCE</b> (All figures driver alone)		
Max speed (mph)	99	
0-60mph (secs)	12.0	
<b>ECONOMY* MPG (Litres/100km)</b> <small>(Official Government test fuel consumption figures)</small>		
Low	40.6 - 46.4 (7.0 - 6.1)	
Medium	43.3 - 51.1 (6.5 - 5.5)	
High	45.8 - 53.9 (6.2 - 5.2)	
Extra High	34.7 - 41.0 (8.2 - 6.9)	
Combined	40.1 - 47.1 (7.0 - 6.0)	
<b>CO<sub>2</sub> EMISSIONS* (g/km)</b>	126 - 129	
<b>WEIGHTS (kg) with 8 seats</b> <small>Please note: the maximum plated weights must not be exceeded</small>		
Gross Vehicle Weight (GVW)	2695	2755
Mass in service	1925	1930
Kerb weight	1660	1660
Gross Train Weight (GTW)	4095	4155
Maximum braked trailer weight	1800	1800
Maximum towball weight	72	72
<b>BRAKES</b> Front/Rear	Vent. discs/discs	
<b>TURNING CIRCLE</b> between kerbs (m)	12.4	
<b>FUEL TANK CAPACITY</b> Litres	69	

\*Figures shown are for comparison purposes only; you should only compare these fuel consumption and CO<sub>2</sub> figures with other cars tested using the same technical standard. The fuel consumption you achieve, and CO<sub>2</sub> produced, in real world conditions will depend upon a number of factors: including the accessories fitted (post registration), variations in weather, driving styles and vehicle load. There is a new test WLTP (Worldwide Harmonised Light Vehicles Test Procedure) used to measure fuel consumption and CO<sub>2</sub> figures. The CO<sub>2</sub> figures shown are NEDCeq (New European Driving Cycle Equivalent), calculated using an EC correlation tool which converts WLTP figures to NEDC. These NEDCeq figures are based on the outgoing test cycle and will be used to calculate tax for the first registration.

ENGINE	BlueHDi 150 S&S 6-speed manual		BlueHDi 180 S&S EAT8 automatic			
	BUSINESS M	BUSINESS M & DUAL FRONT PASSENGER SEAT	BUSINESS LOUNGE 'M' LENGTH	BUSINESS LOUNGE 'M' LENGTH & 3RD ROW 2/3 1/3 SEATING	BUSINESS LOUNGE 'XL' LENGTH	BUSINESS LOUNGE 'XL' LENGTH & 3RD ROW 2/3 1/3 SEATING
Capacity (cc)	1997		1997			
Max power CEE (kW/rpm)	110/4000		130/3750			
Max torque CEE (Nm/rpm)	370/2000		400/2000			
Fuel system	Diesel – High pressure turbo-charged direct injection		Diesel – High pressure turbo-charged direct injection			
Euro status	Euro 6.2		Euro 6.2			
Stop & Start system	•		•			
<b>TRANSMISSION</b>						
Gearbox	Manual		Automatic			
Number of gears	6		8			
<b>PERFORMANCE</b> (All figures driver alone)						
Max speed (mph)	114		114			
0-60mph (secs)	10.3		8.8			
<b>ECONOMY* MPG (Litres/100km)</b> <small>(Official Government test fuel consumption figures)</small>						
Low	34.0 - 39.6 (8.3 - 7.1)		31.6 - 33.8 (8.9 - 8.4)			
Medium	38.0 - 45.9 (7.4 - 6.1)		37.0 - 43.4 (7.6 - 6.5)			
High	41.0 - 48.0 (6.9 - 5.9)		40.9 - 47.7 (6.9 - 5.9)			
Extra High	32.6 - 36.8 (8.7 - 7.7)		32.6 - 37.3 (8.7 - 7.6)			
Combined	36.1 - 41.9 (7.8 - 6.7)		35.5 - 40.6 (8.0 - 7.0)			
<b>CO<sub>2</sub> EMISSIONS* (g/km)</b>	144 - 147		143 - 153			
<b>WEIGHTS (kg) with 8 seats</b> <small>Please note: the maximum plated weights must not be exceeded</small>						
Gross Vehicle Weight (GVW)	2750	2810	2705	2810	2740	2840
Mass in service	1990	2004	2132	2144	2168	2162
Kerb weight	1726	1740	1953	1959	1986	1970
Gross Train Weight (GTW)	4650	4710	4610	4900	4900	4900
Maximum braked trailer weight	2300	2300	2300	2300	2250	2300
Maximum towball weight	92	92	92	92	92	92
<b>BRAKES</b> Front/Rear	Vent. discs/discs		Vent. discs/discs			
<b>TURNING CIRCLE</b> between kerbs (m)	12.4		12.4			
<b>FUEL TANK CAPACITY</b> Litres	69		69			

# CITROËN & YOU

FINANCE AND INSURANCE SHOULD REFLECT YOU AND YOUR NEEDS, JUST AS YOUR CHOSEN CAR DOES. HERE ARE THE PRODUCTS THAT AIM TO DO JUST THAT.

## CITROËN FINANCIAL SERVICES

### • PURCHASE PLAN

Own your vehicle with this flexible package designed to fit your budget.

### • CITROËN PERSONAL CONTRACT PURCHASE

A new Citroën car every two or three years with monthly payments structured to suit your budget.

### • CITROËN PERSONAL LEASE

Enjoy the convenience of a new car without the stress and hassle of ownership.

To find out more about Citroën products and services, go to [www.citroen.co.uk](http://www.citroen.co.uk) or contact your Citroën dealer.



All our vehicles are available on the Motability scheme which includes insurance cover. To find out more, please contact your local dealer to speak to a Motability specialist or visit [citroen.co.uk/motability](http://citroen.co.uk/motability)

## FOR BUSINESS USERS

## FREE2MOVE

### • HIRE PURCHASE

A tried and tested finance package that allows you to own your vehicle.

### • BUSINESS LEASE

An alternative to vehicle ownership that allows you to control your business cash flow and gain tax efficiencies.

### • LEASE PURCHASE

Own a vehicle with a finance solution that offers ultimate flexibility to complement your business cash flow.

### • CONTRACT HIRE

A non-ownership finance solution that keeps costs fixed and risks low.

For more information on Citroën fleet and business sales please contact your local Citroën dealer or go to <http://business.citroen.co.uk>

## CITROËN INSURANCE

### • INSTANT COVER

To help you drive away your new car without delay, we offer instant cover insurance, providing you with 7 days' comprehensive car insurance, for free!

### • MOTOR INSURANCE

Citroën Insurance has been designed specifically for our vehicles. You don't just get repairs you get Citroën expertise, service, quality and parts. So, when the time comes to renew your insurance cover, call Citroën Insurance on 0370 024 2725.

Lines open 8am - 8pm weekdays, 9am - 5pm Saturdays. Alternatively, visit [www.citroen.co.uk](http://www.citroen.co.uk) for more information or to apply online.

Citroën Insurance policies are underwritten by U K Insurance Limited, Registered office: The Wharf, Neville Street, Leeds, LS1 4AZ. Registered in England & Wales No. 1179980. U K Insurance Limited is authorised by the Prudential Regulation Authority and regulated by the Financial Conduct Authority and the Prudential Regulation Authority. Citroën Insurance is a trading style of PSA Finance UK Limited (company registration number: 01024322) having its registered office at 61 London Road, Redhill, Surrey, RH1 1QA.



With the added reassurance of a warranty, routine servicing and maintenance, as well as 24-hour roadside assistance, you are protected.

### • CITROËN WARRANTY

Every new Citroën car has the benefit of a 3 year\* warranty package, plus a 12 year anti-perforation\*\* warranty and a 3 year paint warranty.

### • CITROËN ASSISTANCE

Citroën Assistance brings rapid expert roadside assistance to you in an emergency in response to a telephone call. It comes free of charge for a full year and operates 24 hours a day in all parts of the UK and Europe. Services include nationwide recovery for both car and passengers, a home call service, replacement vehicle, hotel accommodation and vehicle storage if required. Please note, Citroën Assistance only applies to incidents covered by the new vehicle warranty, and excludes non-vehicle faults, such as running out of fuel, misfuelling, loss of keys, lock-ins, road traffic accidents and punctures/wheel changes. For more details, please contact Citroën at <https://www.citroen.co.uk/owner-services/emergency-assistance>

\* 2 years' unlimited warranty. No-fee customer option of 1 year's Dealer provided warranty, only on cars sourced from Citroën UK Limited. Note: Dealer provided warranty is limited to 60,000 miles for cars.

\*\* Against all internal to external perforation to bodywork or underbody.



### • CITROËN MAINTENANCE

From roadside assistance to replacing wear and tear parts or regular servicing, with Citroën Maintenance you have total peace of mind. For a one-off fee or low monthly payment, our experienced engineers will take care of your Citroën, whatever happens. To find out more, contact your Citroën Dealer or Citroën Authorised Repairer.

### • CITROËN SERVICING

Available up to 1 year from your vehicle's registration date, but before its first chargeable service, a Citroën Servicing Package enables you to pay in advance for your vehicle's servicing needs for 3 years/35,000 miles. For further information, please contact your Citroën Dealer.

### • CITROËN MOT TEST

Once your vehicle is three years old, it requires an annual MOT Test. This is a legal requirement to check that it meets road safety and environmental standards. Our nationwide network of Citroën Authorised Repairers know your Citroën best, so if your vehicle's MOT Test is due, why not contact your local Citroën dealer? You can be confident that your vehicle will be looked after by one of our expert trained Citroën Technicians, nominated by DVSA as accredited MOT Testers. Plus, whilst your vehicle is with us, we'll carry out a free manufacturer diagnostic test, check for any new technical updates and carry them out for free - that's the advantage of getting your test done by the people who really know your Citroën.

## INSPIRÉ PAR VOUS



### DOWNLOAD THE MYCITROËN APP

on your smartphone and benefit from information and services personalised to your Citroën vehicle.



### DOWNLOAD THE SCAN MY CITROËN MOBILE APP

Get all the vital information at your fingertips. Scan features and components and access details of the exact new Citroën that you're interested in.



### RATE, SUBMIT AND SHARE YOUR OPINION ABOUT YOUR VEHICLE


or in a Citroën Dealership when purchasing or servicing your vehicle. Ratings and reviews are published on the Citroën's website.

**CITROËN prefers TOTAL** - Note: Images and specification descriptions are dependent on trim level and options specified. Every endeavour has been made to ensure that the information and details contained in this brochure were accurate at the time of going to press. However the company reserves the right, whilst preserving the essential characteristics of the models described, to introduce at any time modifications, changes of details, equipment or accessories. Every effort will be made to bring this brochure up to date, but in order to avoid any misunderstanding please consult your Dealer. For full details of Citroën Care Plan, please see the full manufacturer's price list. The Citroën Website contains full information on all Citroën products and offers available in the UK, together with details of our environmental and recycling policies.





TO FIND OUT MORE  
visit [citroen.co.uk](http://citroen.co.uk)

 To find out more about Motability, please contact your local dealer or visit [citroen.co.uk/motability](http://citroen.co.uk/motability)

K13086-R December 2019 Designed and produced by [www.weareactuity.com](http://www.weareactuity.com)

# CITROËN SPACETOURER

Available in 2 lengths, Citroën SpaceTourer can seat up to 8 in relaxed comfort. A model of versatility, elements such as sliding and removable seats create accessible, flexible space for people and gear – wherever you need to travel.



## PRICES

Models produced from 1st to 18th February 2020.

TRIM	LENGTH	ENGINE	CO <sub>2</sub> G/KM*	V.E.D. 1 <sup>ST</sup> YEAR RATE	INS. GROUP (1-50)	BASIC R.R.P.	V.A.T.	TOTAL R.R.P.	'ON THE ROAD' R.R.P.†	P11D VALUE	B.I.K. TAX RATE
Feel	M	BlueHDi 120 S&S 6-speed manual	126	£265.00	17E	£28,670.83	£5,734.17	£34,405.00	<b>£35,370.00</b>	£35,105.00	33%
	M	BlueHDi 120 S&S EAT8 8-speed automatic transmission	148	£585.00	22E	£29,820.83	£5,964.17	£35,785.00	<b>£37,070.00</b>	£36,485.00	37%
	M	BlueHDi 150 S&S 6-speed manual	144	£585.00	20E	£29,645.83	£5,929.17	£35,575.00	<b>£36,860.00</b>	£36,275.00	36%
	XL	BlueHDi 120 S&S 6-speed manual	127	£265.00	17E	£29,370.83	£5,874.17	£35,245.00	<b>£36,210.00</b>	£35,945.00	33%
	XL	BlueHDi 150 S&S 6-speed manual	145	£585.00	20E	£30,345.83	£6,069.17	£36,415.00	<b>£37,700.00</b>	£37,115.00	37%
Flair	M	BlueHDi 150 S&S 6-speed manual	144	£585.00	22E	£33,841.67	£6,768.33	£40,610.00	<b>£41,895.00</b>	£41,310.00	36%
	M	BlueHDi 180 S&S EAT8 8-speed automatic transmission	145	£585.00	24E	£35,812.50	£7,162.50	£42,975.00	<b>£44,260.00</b>	£43,675.00	36%
	XL	BlueHDi 180 S&S EAT8 8-speed automatic transmission	146	£585.00	24E	£36,512.50	£7,302.50	£43,815.00	<b>£45,100.00</b>	£44,515.00	36%

Prices quoted above are for the standard 8 seat version. See the options list for alternative configurations.

Insurance groups (1-50) are an indication only, please consult your insurance company for further details.

+ Figures shown are for comparison purposes only; you should only compare these fuel consumption and CO<sub>2</sub> figures with other cars tested using the same technical standard. The fuel consumption you achieve, and CO<sub>2</sub> produced, in real world conditions will depend upon a number of factors: including the accessories fitted (post registration), variations in weather, driving styles and vehicle load. There is a new test WLTP (Worldwide Harmonised Light Vehicles Test Procedure) used to measure fuel consumption and CO<sub>2</sub> figures. The CO<sub>2</sub> figures shown are NEDCeq (New European Driving Cycle Equivalent), calculated using an EC correlation tool which converts WLTP figures to NEDC. These NEDCeq figures are based on the outgoing test cycle and will be used to calculate tax for the first registration. CO<sub>2</sub> and fuel economy figures may vary according to wheel fitment and optional extras fitted.

\* The Manufacturer's 'On the Road' recommended retail price includes the following: delivery to dealer and number plates £583.33, V.A.T. £116.67, Government first registration fee £55 and Graduated Vehicle Excise Duty (see <http://business.citroen.co.uk> for details).

All information and prices correct at time of publication, but are subject to change at any time without prior notice (which may occur as a result of, but not limited to, any changes in legislation and/or any changes by the Government). Please see our Prices and Specifications brochures or contact your local Citroën dealer for the most up-to-date prices and specification details for all models.

K13120P February 2020



# CITROËN SPACETOURER

## OPTIONS

Models produced from 1st to 18th February 2020. All prices are inclusive of VAT.

	Feel	Flair
<b>PAINT</b>		
Flat paint: Polar White (Free of charge option)	£0	£0
Lagoon Blue	£545	
Metallic paint	£545	£545
<b>SAFETY &amp; SECURITY</b>		
Drive Assist Pack, includes: adaptive cruise control, automatic emergency braking system (AEBS2), distance alert system. (Includes 3.5" colour display on all versions)	£450	£450
Curtain airbags	£250	•
Grip Control®, including: 17" 'Pentagon' wheel trims and 215/60 R17 mud and snow tyres	£670 <sup>1</sup>	
Grip Control®, including: 17" 'Curve' bi-tone alloy wheel upgrade and 215/60 R17 mud and snow tyres	£1,160 <sup>1</sup>	
Grip Control®, including: 17" 'Curve' bi-tone alloy wheel upgrade and 215/60 R17 mud and snow tyres		£670 <sup>1</sup>
Combined Driver Assistance Pack- Head up display (YB01), also includes options connected Citroën Connect Nav (W LX7) and Drive Assist Pack (RG04)	£1,410	
Safety pack, includes: lane departure warning (LDW), speed limit recognition and recommendation, driver attention alert 3 (DAA3), smartbeam assistance	£600	£600
<b>COMFORT AND CONVENIENCE</b>		
Easy entry pack, includes: keyless entry and go (YD01), Twin 'hands free' electric sliding rear doors (includes foot operated sensors) (HLO4), Fuel filler door electrically lockable, 230v socket	£1,400	•
Parking sensors: front and rear with blind spot monitoring system (includes power folding door mirrors HU02)	£650	
Rear seat 'aviation style' air conditioning panel (Linked to option OK01 on Business)	•	•
Rear side windows: extra light tinted (70% light transmission) fixed position row 2 / 3 (Free of charge option in lieu of dark or extra dark tinted windows)	£180	£180
Rear side windows: extra-dark tinted (10% light transmission) fixed position row 2 / 3	£180	•
Split opening tailgate	£200	•
Visio Park 1: 180° Colour reversing camera + front and rear parking sensors + blind spot monitoring system	£840	•

	Feel	Flair
<b>INTERIOR FEATURES</b>		
Rear parcel shelf (standard on Business Lounge when AN17 ordered)	•	•
3 additional seats on rails, (1/3 2/3) in row 3, removable, with 3 x Isofix mounting points. Includes longitudinal and back rest angle adjustment. (In lieu of 2 x row 3 armchairs on Business Lounge)	• <sup>1</sup>	• <sup>1</sup>
<b>IN CAR ENTERTAINMENT</b>		
Citroën Connect Nav (includes voice control and TomTom® Live updates (3 year subscription) (also includes Citroën Connect Box)	£600 <sup>2</sup>	
TomTom® Live services subscription – 3 years (linked to Citroën Connect Nav) <sup>2</sup>	£0	•
TomTom® Live services subscription – 1 year extension (4 years total) <sup>2</sup>	£55	£55
TomTom® Live services subscription – 3 year extension (6 years total) <sup>2</sup>	£125	£125
SpeedCam / Danger Zones subscription – 1 year <sup>3</sup>	£69	£69
SpeedCam / Danger Zones subscription – 3 years <sup>3</sup>	£139	£139
<b>EXTERIOR FEATURES</b>		
Conversion interface box (rule)	£300	
Panoramic cielo glass roof (including x2 manual blackout blinds)	£500	•
Tow bar: fixed swan neck	£240	£240
Tow bar: detachable swan neck tow bar	£300	£300
17" 'Curve' bi-tone alloy wheels	£490 <sup>1</sup>	•
<b>EXTERIOR LIGHTING AND VISIBILITY</b>		
Headlight washers	£100	£100
Xenon lights	£600	•

Some options may change CO<sub>2</sub> emissions, please check with your local dealer.

<sup>1</sup> Please refer to Technical Specification Pages for impact on vehicle CO<sub>2</sub> emissions, weights and MPG data.

<sup>2</sup> Subject to subscription – please visit <https://services-store.citroen.co.uk/> to subscribe.

<sup>3</sup> The SpeedCam/Danger Zones package helps you identify situations which require increased attention by sending you both audible and visual alerts (subject to settings). Within the UK the service highlights different types of speed cameras, and red light cameras, as well as accident blackspots. While the service is operational across most of Europe, it adapts as necessary when travelling in different countries to ensure the local laws with respect to Speed Camera identification are followed. This option can be added to your Citroën Connect Nav subscription at any time. Please visit <https://services-store.citroen.co.uk/> to subscribe.

# CITROËN SPACETOURER BUSINESS

Available in 2 lengths and with 8 or 9 seats, Citroën SpaceTourer Business and Business Lounge is tailored for professionals.



## PRICES

Models produced from 1st to 18th February 2020.

TRIM	LENGTH	ENGINE	CO <sub>2</sub> G/KM*	V.E.D. 1 <sup>ST</sup> YEAR RATE	INS. GROUP (1-50)	BASIC R.R.P.	V.A.T.	TOTAL R.R.P.	'ON THE ROAD' R.R.P.*	P11D VALUE	B.I.K. TAX RATE
Business	M	BlueHDi 120 S&S 6-speed manual	127	£265.00	17E	£28,362.50	£5,672.50	£34,035.00	<b>£35,000.00</b>	£34,735.00	33%
	M	BlueHDi 120 S&S EAT8 8-speed automatic transmission	148	£585.00	22E	£29,512.50	£5,902.50	£35,415.00	<b>£36,700.00</b>	£36,115.00	37%
	M	BlueHDi 150 S&S 6-speed manual	145	£585.00	20E	£29,337.50	£5,867.50	£35,205.00	<b>£36,490.00</b>	£35,905.00	37%
Business Lounge	M	BlueHDi 180 S&S EAT8 8-speed automatic transmission	149	£585.00	27E	£36,358.33	£7,271.67	£43,630.00	<b>£44,915.00</b>	£44,330.00	37%
	XL	BlueHDi 180 S&S EAT8 8-speed automatic transmission	150	£585.00	27E	£37,058.33	£7,411.67	£44,470.00	<b>£45,755.00</b>	£45,170.00	37%

Prices quoted above are for the standard 8 seats on Business and 6 seats on Business Lounge. See the options list for alternative configurations.

Insurance groups (1-50) are an indication only, please consult your insurance company for further details.

+ Figures shown are for comparison purposes only; you should only compare these fuel consumption and CO<sub>2</sub> figures with other cars tested using the same technical standard. The fuel consumption you achieve, and CO<sub>2</sub> produced, in real world conditions will depend upon a number of factors: including the accessories fitted (post registration), variations in weather, driving styles and vehicle load. There is a new test WLTP (Worldwide Harmonised Light Vehicles Test Procedure) used to measure fuel consumption and CO<sub>2</sub> figures. The CO<sub>2</sub> figures shown are NEDCeq (New European Driving Cycle Equivalent), calculated using an EC correlation tool which converts WLTP figures to NEDC. These NEDCeq figures are based on the outgoing test cycle and will be used to calculate tax for the first registration. CO<sub>2</sub> and fuel economy figures may vary according to wheel fitment and optional extras fitted.

\* The Manufacturer's 'On the Road' recommended retail price includes the following: delivery to dealer and number plates £583.33, V.A.T. £1116.67, Government first registration fee £55 and Graduated Vehicle Excise Duty (see <http://business.citroen.co.uk> for details).

All information and prices correct at time of publication, but are subject to change at any time without prior notice (which may occur as a result of, but not limited to, any changes in legislation and/or any changes by the Government). Please see our Prices and Specifications brochures or contact your local Citroën dealer for the most up-to-date prices and specification details for all models.



# CITROËN SPACETOURER BUSINESS

## OPTIONS

Models produced from 1st to 18th February 2020. All prices are inclusive of VAT.

	Business	Business Lounge		Business	Business Lounge
<b>PAINT</b>			<b>INTERIOR FEATURES</b>		
Flat paint: Polar White (Free of charge option)	£0	£0	Seating: Dual front passenger bench seat with under-seat storage (free of charge upgrade, in lieu of single front passenger seat with armrest)	£0 <sup>1</sup>	•
Metallic paint	£545	£545	3 additional seats on rails, (1/3 2/3) in row 3, removable, with 3 x Isofix mounting points. Includes longitudinal and back rest angle adjustment. (In lieu of 2 x row 3 armchairs on Business Lounge)		£800 <sup>1</sup>
<b>SAFETY &amp; SECURITY</b>			<b>IN CAR ENTERTAINMENT</b>		
Drive Assist Pack, includes: adaptive cruise control, automatic emergency braking system (AEBS2), distance alert system. (Includes 3.5" colour display on all versions)	£450	£450	Citroën Connect Nav (includes voice control and TomTom® Live updates (3 year subscription) (also includes Citroën Connect Box)	£600 <sup>2</sup>	•
Curtain airbags	£250	•	TomTom® Live services subscription – 3 years (linked to Citroën Connect Nav) <sup>2</sup>		•
Grip Control®, including: 17" 'Pentagon' wheel trim upgrade and 215/60 R17 mud and snow tyres	£770 <sup>1</sup>		TomTom® Live services subscription – 1 year extension (4 years total) <sup>2</sup>		£55
Grip Control®, including: 17" 'Curve' bi-tone alloy wheel upgrade and 215/60 R17 mud and snow tyres	£1260 <sup>1</sup>	£670 <sup>1</sup>	TomTom® Live services subscription – 3 year extension (6 years total) <sup>2</sup>		£125
Combined Driver Assistance Pack- Head up display (YB01), also includes options connected Citroën Connect Nav (WLX7) and Drive Assist Pack (RG04)	£1410		SpeedCam / Danger Zones subscription – 1 year <sup>3</sup>		£69
Safety pack, includes: lane departure warning (LDW), speed limit recognition and recommendation, driver attention alert 3 (DAA3), smartbeam assistance	£600	£600	SpeedCam / Danger Zones subscription – 3 years <sup>3</sup>		£139
<b>COMFORT AND CONVENIENCE</b>			<b>EXTERIOR FEATURES</b>		
Automatic dual zone climate control	£400		Conversion interface box (rule)	£300	
Easy entry pack, includes: keyless entry and go (YD01), Twin 'hands free' electric sliding rear doors (includes foot operated sensors) (HL04), Fuel filler door electrically lockable, 230v socket	£1,400	•	Panoramic cielo glass roof (including x2 manual blackout blinds)		•
Parking sensors: front and rear with blind spot monitoring system (includes power folding door mirrors HU02)	£650		Panoramic cielo glass roof (including x2 manual blackout blinds) (also includes 'aviation style' centre panel, option NR02)	£1000	
Parking sensors: front and rear with blind spot monitoring system		£250	Tow bar: fixed swan neck	£240	£240
Rear seat 'aviation style' air conditioning panel (Linked to option OK01 on Business)	£500	•	Tow bar: detachable swan neck tow bar	£300	£300
Rear side windows: extra light tinted (70% light transmission) fixed position row 2 / 3 (Free of charge option in lieu of dark or extra dark tinted windows)	£180	£180	17" 'Curve' bi-tone alloy wheels	£590	•
Rear side windows: extra-dark tinted (10% light transmission) fixed position row 2 / 3	£180	•	<b>EXTERIOR LIGHTING AND VISIBILITY</b>		
Split opening tailgate	£200	£200	Headlight washers	£100	£100
Visio Park 1: 180° Colour reversing camera + front and rear parking sensors + blind spot monitoring system	£840	£840	Xenon lights	£600	•
<b>INTERIOR FEATURES</b>					
Central table on rail (compatible with both 4 x armchair configuration or 2 x armchair and 1 x row 3 1/3 2/3 seating)		£495			
Rear parcel shelf (standard on Business Lounge when AN17 ordered)	£80				

Some options may change CO<sub>2</sub> emissions, please check with your local dealer.

Some options may change CO<sub>2</sub> emissions, please check with your local dealer.

<sup>1</sup> Please refer to Technical Specification Pages for impact on vehicle CO<sub>2</sub> emissions, weights and MPG data.

<sup>2</sup> Subject to subscription – please visit <https://services-store.citroen.co.uk/> to subscribe.

<sup>3</sup> The SpeedCam/Danger Zones package helps you identify situations which require increased attention by sending you both audible and visual alerts (subject to settings). Within the UK the service highlights different types of speed cameras, and red light cameras, as well as accident blackspots. While the service is operational across most of Europe, it adapts as necessary when travelling in different countries to ensure the local laws with respect to Speed Camera identification are followed. This option can be added to your Citroën Connect Nav subscription at any time. Please visit <https://services-store.citroen.co.uk/> to subscribe.



1. Learn more
2. book your test drive
3. Apply for finance online

[www.charterscitroen.com](http://www.charterscitroen.com)