

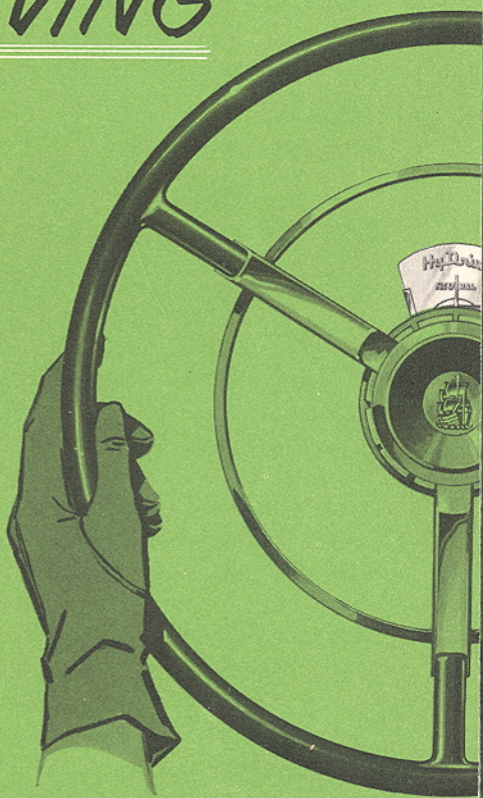
New

PLYMOUTH

HY-DRIVE

NO-SHIFT

DRIVING

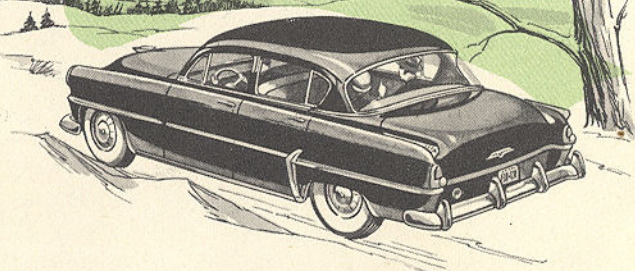


LEAST EXPENSIVE



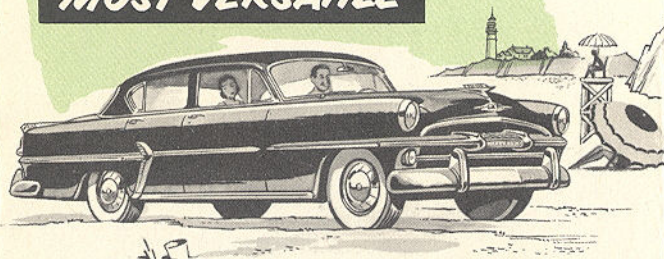
From coast to coast, from border to border, people throughout the nation are welcoming Hy-Drive because it's the least expensive no-shift drive in the low-price field. The original cost is low and it's economical to run.

SMOOTHEST



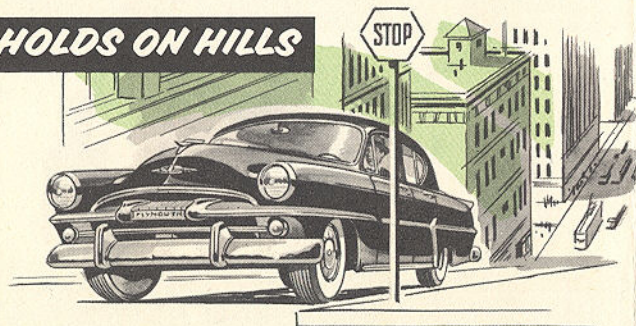
Hy-Drive is also the smoothest no-shift drive in the low-price field. No noises, jerks or lurches at any speed, from standstill to cruising! Your car can't up-shift or down-shift on you unexpectedly. This smoother application of power gives you better and safer traction on ice, snowy roads, or other slippery surfaces.

MOST VERSATILE



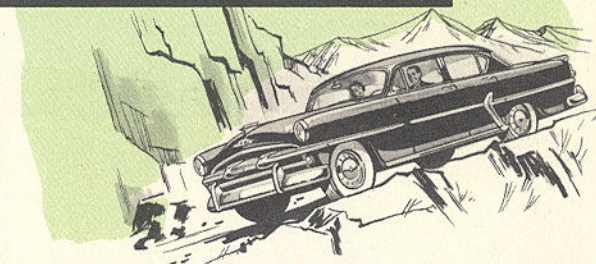
You can do everything you need to in normal driving with Hy-Drive—and you have this extra advantage besides: You have the standard shift always available. This gives you great versatility. For example, you can use the clutch for more exact control in “rocking” out of sand, mud or snow . . . or for maneuvering into a tight parking space.

HOLDS ON HILLS



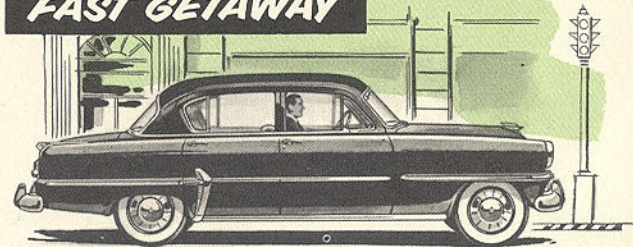
In cities where hills are so steep the trolleys have to run on cables, no-shift drives are put to a real test. And some of the most enthusiastic reports on Hy-Drive come from San Francisco, as well as from the most mountainous areas of the West. For with Hy-Drive, you can stop and start, even on a steep hill, without using the brake, without shifting, without taking your hands off the wheel.

GOOD ENGINE BRAKING



Hy-Drive gives you good engine braking going downhill—good because of the superior smoothness of Hy-Drive, and good because increasing road speed will not cause Hy-Drive to up-shift. Even on an up-and-down, curvy, hilly road, driving power adjusts itself smoothly to driving needs, no matter how suddenly power requirements change. On extremely steep mountain roads you can increase your engine braking effect by driving with Hy-Drive in your first or second gears.

FAST GETAWAY

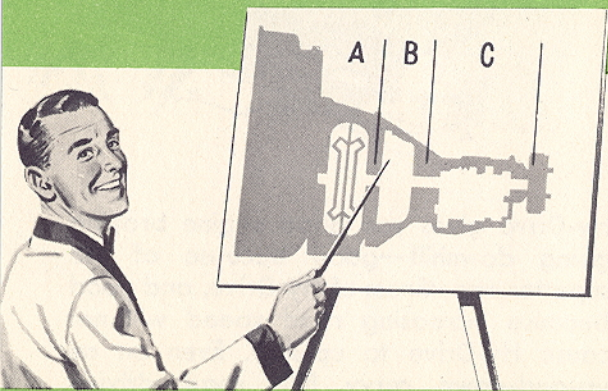


A special power-multiplying feature of Hy-Drive gives you fast, positive getaway. There is no racing of the engine to get started, no “winding up.”



ALL OVER THE COUNTRY PEOPLE ARE HAILING HY-DRIVE AS THE BEST BUY IN NO-SHIFT DRIVING IN THE LOW-PRICE FIELD!

HY-DRIVE is so simple,
so trouble-free
mechanically!

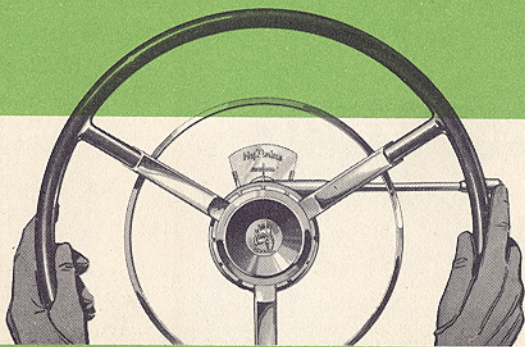


A NEW, MORE EFFICIENT TYPE OF TORQUE CONVERTER ("A" in the diagram) takes power from the engine and multiplies or adjusts it to meet exact driving needs. Driving power is then passed on to the wheels through the rugged Plymouth clutch ("B") and the Plymouth Synchro-Silent Transmission ("C"), famous for its dependability. Hy-Drive normally works through the "high" gear, but it will work through "low" or "second" if you simply set the gear lever to those positions.

In Hy-Drive, there is no complicated mechanism to get out of order or to adjust and maintain. Hy-Drive is true no-shift driving because it *actually eliminates the shifting of gears*. The changing of speed and power is accomplished through the controlled flow of oil against the blades in the torque-converter, one simple unit with few moving parts. This explains not only the low initial cost, but the trouble-free operation of Hy-Drive. Also, the cushion of oil represented by the torque converter protects your engine against driving shocks—thereby prolonging its life.

NEW PLYMOUTH HY-DRIVE NO-SHIFT DRIVING

... so simple to operate!



No complicated dials or indicators. Not much change from standard driving habits. Just start the engine with the pointer above on *neutral*. Shift directly into high, using gear lever and clutch. That's all! You're in Hy-Drive. From there on you can drive cross-town or cross-country *without shifting*, using only the brake and the accelerator.