

# SANTA FE

2020





# The H-Factor.™

What is the H-Factor™? It means you can have it all.

Our company believes in pushing the boundaries and challenging conventional thinking. Our very name, “Hyundai”, stands for modernity in the Korean language and it is this one word that helps represent everything we stand for. We don’t approach vehicle development in a traditional way. Our company is structured differently. We think differently. We find the modern way. It’s our mission to offer top quality, feature-rich vehicles at an affordable price.

We offer elite quality through meticulous design and painstaking craftsmanship. Our three design centres in Korea, the U.S. and Europe compete against each other to bring you cutting-edge designs — designs that not only look stunning but are also aerodynamic and fuel efficient.

We are the only global automaker to manufacture our own Advanced High-Strength Steel because, simply put, we just weren’t satisfied with what was available.

We test our vehicles in areas like the Arctic, our proving grounds in the Mojave Desert and on Germany’s world-famous Nürburgring circuit to deliver the durability and reliability you demand. And not only do we package our vehicles with advanced safety and technology, we back all our vehicles with one of the best automotive warranties in the industry. This means you really can have it all, quality and value together.

That’s the H-Factor.™



Santa Fe SUPERSTRUCTURE™ shown,  
made with our Advanced High-Strength Steel.

# Surround yourself with safety.

The Santa Fe is about helping your drive become a safer one. An array of available driver assistance technologies actively scans your surroundings to help keep you safe on your journeys. They've been developed to help alert you to, and even avoid, unexpected dangers on the road and include the world's first available Safe Exit Assist<sup>1</sup> technology.

At the core of the Santa Fe is the SUPERSTRUCTURE™, a state-of-the-art vehicle frame built with our Advanced High-Strength Steel for superior rigidity and strength. In the event that a collision cannot be avoided, this ultra-rigid frame helps protect occupants by absorbing harmful energy and redirecting it away from the passenger compartment.

Surround yourself with safety in the 2020 Santa Fe.



## Hyundai SmartSense™

Our suite of available Hyundai SmartSense™ safety technologies includes a range of camera, radar and motion detection technologies to provide you with added peace of mind.



### Available Safe Exit Assist — world's first<sup>1</sup>

This feature helps prevent accidents by temporarily locking the rear doors when it detects a vehicle approaching from behind, so that rear passengers can only exit the vehicle when it is safe to do so. It will continue to monitor for up to 10 minutes after the ignition is turned off.



### Available Rear Occupant Alert with ultrasonic sensors<sup>2</sup>

The system is designed to help prevent children and pets from being forgotten in the vehicle. It uses ultrasonic sensors to monitor the rear seats; if movement is detected, the driver is alerted with audible and visual cues.



Available Blind View Monitor



Available Forward Collision-Avoidance Assist with Pedestrian Detection



Available Lane Departure Warning System with Lane Keeping Assist



Available Driver Attention Warning



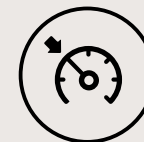
Available Blind-Spot Collision-Avoidance Assist



Available Rear Cross-Traffic Collision-Avoidance Assist



Available Parking Distance Warning – Reverse



Available Adaptive Cruise Control with traffic stop and go



Available High Beam Assist





Surround yourself  
with safety.

SANTA FE

Ultimate model shown



# Bold design.

The cascading grille is framed by a unique twin headlamp design, comprised of LED daytime running lights positioned above the available LED headlights. The bold design is characterized by a sleek roofline and dynamic side character line running from the headlights to tail lights. Available 19" alloy wheels further enhance its commanding presence on the road.



Available 19" alloy wheels

# Elevate your journey with convenient technology.

An abundance of intuitive technology can help you make more out of any excursion, including an available 630-watt Infinity® audio system for incredible surround sound, and an available 8.0" touch-screen with a built-in navigation system that helps guide your way. The available Head-Up Display projects important information like speed, navigation commands and safety warnings on the windshield so you can keep your eyes on the road.

Parking the Santa Fe is a breeze thanks to the available Surround View Monitor, which provides multiple perspectives of the vehicle, including an aerial view. Other available conveniences like rain-sensing wipers, a wireless charging pad<sup>▼</sup> and proximity keyless entry will only add to your comfort and convenience.



Standard 7.0" touch-screen display with Apple CarPlay™ and Android Auto™



Available 8.0" touch-screen with navigation system



Available wireless charging pad<sup>▼</sup>



Available proximity keyless entry



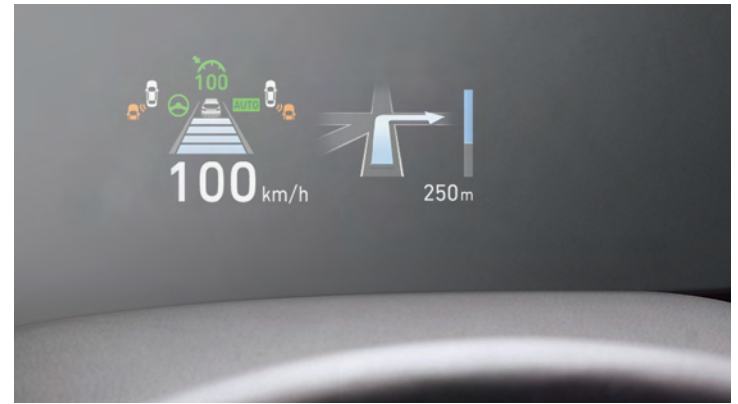
Available 630-watt Infinity® audio system



Available rain-sensing windshield wipers



Never get into a chilly vehicle again. Among a wealth of features, one of the best offered with our available BlueLink® connected vehicle system is the convenience of starting your vehicle remotely from your smartphone. Please see your dealer for full service-level details.



Available Head-Up Display



Available Surround View Monitor



Available electro-luminescent gauge cluster with 7.0" supervision LCD trip computer



# A level of comfort and luxury you deserve.

The Santa Fe provides generous head, leg and shoulder room so everyone can travel in comfort. The spacious cabin feels even larger when the available panoramic sunroof spans open on a beautiful summer day. Now choose your preferred temperature with available dual-zone control for both driver and front passenger, customize driver seating with the available 12-way power driver's seats and take command of the road in the luxurious Santa Fe.



Standard heated front seats and steering wheel, available ventilated front seats



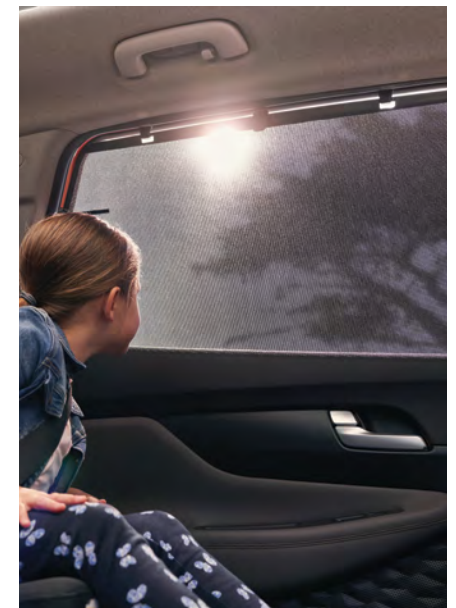
Available 12-way power driver's seat with power thigh extension



Available panoramic sunroof with premium headliner



Available heated rear seats



Available rear sunshade blinds

# Efficiently powerful.

Choose between two powerful and efficient engine options with the Santa Fe. The standard 2.4L GDI engine delivers 185 horsepower and 178 lb-ft of torque. Drivers seeking greater power can opt for the available 2.0L Turbocharged engine to enjoy even more capability, with 3,500 lbs of towing capacity, 235 horsepower and 260 lb-ft of torque. Both options are paired with an 8-speed automatic transmission for smooth shifting and improved fuel efficiency.

## Available HTRAC™ All-Wheel Drive (AWD)

This system maximizes driving pleasure and makes performance accessible in even the most demanding conditions. What separates HTRAC™ from competing AWD systems is the ability to choose the traction distribution with HTRAC™ Intelligent Drive Modes. Each mode alters transmission mapping, power distribution, throttle responsiveness and stability control settings. In slippery conditions, the system distributes power to all four wheels automatically.



**COMFORT:** Balanced, helps provide further driver confidence and stable control in all weather conditions.



**SMART:** Fuel conservation, provides improved fuel efficiency by sending power mainly to the front wheels.

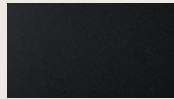


**SPORT:** Dynamic control, sends up to 50% torque to the rear wheels for even greater agility.

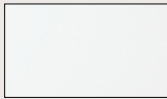


# Colours and wheels

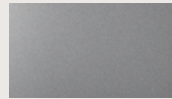
## Exterior colours\*



Twilight Black



Quartz White



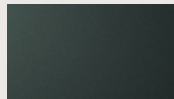
Shimmering Silver\*



Flame Red\*



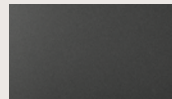
Stormy Sea



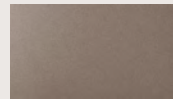
Rainforest  
Available on Luxury and Ultimate models only



Lava Orange  
Available on Luxury and Ultimate models only



Nocturne Grey\*  
Not available on Essential model



Earthy Bronze  
Not available on Essential model

## Wheels



17" alloy wheel  
Standard on Essential model



18" alloy wheel  
Standard on Preferred and Luxury models



19" alloy wheel  
Standard on Ultimate model

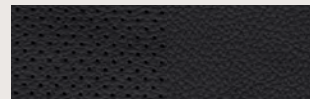
## Interior colours\*



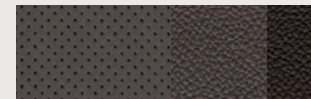
Black Cloth  
Standard on Essential and Preferred models



Grey Cloth  
Available on Preferred model (Twilight Black, Quartz White and Stormy Sea exterior colours only)



Black Leather  
Standard on Luxury and Ultimate models



Grey Leather  
Available on Luxury and Ultimate models (Twilight Black and Stormy Sea exterior colours only)



Beige Leather  
Available on Luxury and Ultimate models (Twilight Black, Quartz White, Flame Red and Rainforest exterior colours only with Luxury and Ultimate models, and Earthy Bronze and Lava Orange exterior colours only with Ultimate model)

# Accessories



**Side Steps — Chrome**  
These functional, robust and stylish side steps feature a slip-resistant 5" step area to ease entry and exit.



**Trailer Hitch**  
Designed to meet your towing needs, a Hyundai hitch can accommodate a wide variety of hitch-mounted accessories.



**Cross Rails**  
This durable, quick-locking cross rail system lets you transport cargo easily, without sacrificing interior room.



**Premium All-Weather Floor Liners**  
Premium all-weather floor liners were designed to cover the interior carpet, providing maximum protection against the elements that other mats cannot offer. Remove carpet mats prior to installation.

For more information on additional accessories please visit [hyundaicanada.com](http://hyundaicanada.com) or see your dealer for details.

\* Exterior and interior colour options and/or availability by model may change without notice. Choice of interior colour is dependent on model and/or exterior colour selection. Colours shown are for reference only and may vary from the actual hue. Visit [hyundaicanada.com](http://hyundaicanada.com) or see your dealer for details.

\* Available October 2019.

# Find the SANTA FE that is right for you.

## Essential

Standard equipment includes:

### Performance features:

- 2.4L GDI 4-cylinder engine with idle start-stop
- 8-speed automatic transmission
- Electronic parking brake
- Front-Wheel Drive

### Exterior features:

- 17" alloy wheels
- Acoustically laminated front windows
- Acoustically laminated windshield
- Automatic headlights
- Body-coloured exterior door handles
- Heated, power-adjustable side mirrors
- Front fog lights
- Front solar glass
- LED Daytime Running Lights
- Projector headlights with LED accents
- Rear privacy glass
- Roof rack side rails

### Safety features:

- 6 airbags
- Hill-start assist control
- Rear Occupant Alert
- Vehicle Stability Management, Electronic Stability Control, Traction Control System, Anti-lock Braking System

### Interior features:

- 7.0" touch-screen display
- Apple CarPlay™ and Android Auto™
- Bluetooth® hands-free phone system
- Driver's seat power lumbar support
- Heated front seats
- Heated, leather-wrapped steering wheel
- Manual child locks
- Power windows with driver's and front passenger's auto-up/down
- Rear seat Quiet Mode
- Rearview camera with dynamic guidelines
- Tilt-and-telescopic steering column
- USB/auxiliary connectivity

### Optional Safety package:

- Adaptive Cruise Control with traffic stop and go
- Driver Attention Warning
- Forward Collision-Avoidance Assist with Pedestrian Detection
- High Beam Assist
- Lane Departure Warning with Lane Keeping Assist

### Optional:

- HTRAC™ All-Wheel Drive

## Preferred

Includes **Essential** standard equipment plus:

### Performance features:

- HTRAC™ All-Wheel Drive

### Exterior features:

- 18" alloy wheels
- Sharkfin antenna

### Safety features:

- Adaptive Cruise Control with traffic stop and go
- Blind-Spot Collision-Avoidance Assist
- Driver Attention Warning
- Forward Collision-Avoidance Assist with Pedestrian Detection
- High Beam Assist
- Lane Departure Warning with Lane Keeping Assist
- Rear Cross-Traffic Collision-Avoidance Assist
- Parking Distance Warning — Reverse
- Power child locks
- Rear Occupant Alert with ultrasonic sensors
- Safe Exit Assist

### Interior features:

- 8-way power driver's seat
- Auto-defogging windshield system
- BlueLink® connected vehicle system
- Dual-zone automatic climate control with CleanAir Ionizer and Predictive Logic
- Electrochromic auto-dimming rearview mirror with HomeLink®, compass and BlueLink® controls
- Manual rear sunshades
- Proximity keyless entry with push-button ignition and alarm
- Side mirrors with turn signal indicators
- SiriusXM™ and HD Radio

### Optional Sun and Leather package:

- 8-way power front passenger seat (including power height adjustment)
- Leather console moulding and armrest
- Leather seating surfaces
- LED map and personal lights
- Panoramic sunroof

### Optional:

- 2.0T GDI 4-cylinder engine
- Trailer preparation package (full wiring and transmission cooler)

## Luxury

Includes **Preferred** standard equipment plus:

### Performance features:

- 2.0T GDI 4-cylinder engine
- Trailer preparation package (full wiring and transmission cooler)

### Exterior features:

- Dark chrome bumper moulding and side garnish
- Dark chrome exterior door handles
- Smart Power Liftgate

### Safety features:

- Blind View Monitor

### Interior features:

- 8-way power front passenger seat (including power height adjustment)
- Electro-luminescent gauge cluster with 7.0" supervision LCD trip computer
- Deluxe door scuff
- Driver's Integrated Memory System (seats and side mirrors)
- Heated rear seats
- Leather console moulding and armrest
- Leather seating surfaces
- LED map and personal lights
- Panoramic sunroof
- Power driver's 4-way lumbar support
- Power extendable driver's seat cushion
- Surround View Monitor
- Ventilated front seats

## Ultimate

Includes **Luxury** standard equipment plus:

### Exterior features:

- 19" alloy wheels
- Continental tires
- LED fog lights
- LED headlights (low/high beam)
- LED tail lights
- Rain-sensing wipers

### Safety features:

- Tire Pressure Monitoring System

### Interior features:

- 8.0" touch-screen navigation system
- Head-Up Display
- Infinity® premium audio system with 12 speakers
- Wireless charging pad\*



## Flexibility for everyday needs.

Rear seating reclines for comfort and folds 60/40 to deliver flexible storage options. The smart design also provides additional storage under the cargo floor, so you can store items out of sight. Pack up for any adventure with a total of 2,019 litres of cargo capacity when the rear seats are folded down.





## One of the best-backed warranties in Canada.

You will see that a number of our vehicles have received multiple awards from the most reputable third-party organizations, so you can take their word when it comes to the quality of our vehicles. This quality is equally matched by the quality of our warranty. We stand confidently behind our products to give you ultimate peace of mind with a 5-year/100,000 kilometre Comprehensive Limited Warranty<sup>†</sup>. We also provide a 5-year/Unlimited kilometre Roadside Assistance Program<sup>\*\*</sup> featuring flat tire changing, lockout service and more. Just one toll-free call away, 24 hours a day.

<sup>™</sup>/<sup>®</sup>The Hyundai name, logos, product names, feature names, images and slogans are trademarks owned or licensed by Hyundai Auto Canada Corp.. Specifications, features, illustrations, accessories, materials and equipment and all other information shown in this brochure are based on the latest information available at the time of publication. Although descriptions are believed to be correct, accuracy cannot be guaranteed. Hyundai Auto Canada Corp. reserves the right to make any changes or modifications at any time, without notice or obligation, including, without limitation, in colour, specifications, features, accessories, materials, equipment and models. Some vehicles are shown with optional equipment. All Hyundai warranties have no deductible. <sup>†</sup>Hyundai's Comprehensive Limited Warranty coverage covers most vehicle components against defects in workmanship under normal use and maintenance conditions. <sup>††</sup>Hyundai's 24-Hour Roadside Assistance Program is a limited service and does not cover certain costs or expenses. Roadside Assistance is not a warranty. <sup>‡</sup>Apple CarPlay™ works with iPhone 5s, iPhone 5c, iPhone 5 and later models running the latest version of iOS 7 and above. Apple CarPlay™ may not be available on all devices and may not be available in all countries or regions. Visit [www.apple.com](http://www.apple.com) for further details and any applicable limitations. Subject to app compatibility. Apple and Apple CarPlay are trademarks of Apple Inc.. <sup>§</sup>Android Auto™ is compatible with Android phones running Android Lollipop or newer. Android Auto may not be available on all devices and is not available in all countries or regions. Additional apps may be required. Visit [www.android.com](http://www.android.com) for further details and any applicable limitations. Subject to app compatibility. Android and Android Auto are trademarks of Google Inc.. <sup>¶</sup>Available on select models only. BlueLink® includes 3 years of service without charge. The BlueLink service is available for new vehicle purchases and leases subject to the BlueLink subscription terms and conditions. Only use BlueLink and corresponding devices when safe to do so. Cellular and GPS coverage is required. Features, specifications, and fees may vary by models and are subject to change. For more on details and limitations, visit [hyundaicanada.com](http://hyundaicanada.com) or your authorized Hyundai dealer. <sup>\*</sup>Not all devices will be compatible. See Owner's Manual for further details. <sup>†††</sup>When the vehicle is parked, Safe Exit Assist (SEA) can alert occupants planning to exit the vehicle when a vehicle is approaching from behind. When child locks are active, SEA prevents the rear doors from opening if a vehicle approaching from behind is detected. SEA may not detect every vehicle and may not avoid an accident. SEA is not a substitute for attentive operation of the vehicle. Always monitor the vehicle's surroundings before any passengers exit the vehicle. See Owner's Manual for further details and limitations. <sup>‡‡</sup>Do not solely rely on Rear Occupant Alert (ROA) to determine whether rear seats are empty. Always make sure you check rear seats before exiting the vehicle. ROA may not detect a rear occupant in certain situations, including where no or little movement is detected or if the sensor is obscured. See Owner's Manual for further details and limitations regarding ROA. The SiriusXM™ name is a trademark of SiriusXM Satellite Radio Inc.. Bluetooth® word mark and logos are registered trademarks owned by Bluetooth SIG, Inc.. HomeLink® is a registered trademark of Johnson Controls Inc.. Infinity® is a registered trademark of Harman International, Inc.. All other trademarks and trade names are those of their respective owners. Some images shown with special graphic effects. 020SA-L600

Hyundai Auto Canada Corp.  
[hyundaicanada.com](http://hyundaicanada.com)

