

2021 | GUIDEBOOK SERIES

# SOUL

A simple guide to help you decide



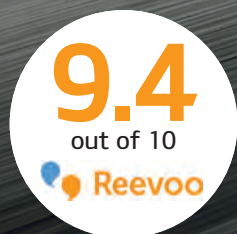
The Power to Surprise





# BARE YOUR SOUL

It's never looked like anything else on the road. The 2021 Soul takes its game – and yours – to a whole other level, with even more wow factor. That starts with an assertive front end and includes features that make the Soul not only a joy to look at, but a thrill to drive. Even better, you can pack in the fun with Soul's impressive versatility and cargo capacity. Bare your soul with the 2021 Soul.



You can find all the complete reviews at [kia.ca](https://kia.ca).

'2020 Best Buy  
New SUV of the year'

THE **CAR**  
**GUIDE**<sup>MC</sup>



# EVERY TIME BEHIND THE WHEEL IS SHOWTIME

TECHNOLOGY

KIA.CA/SOUL

It's not just the bold styling that sets Soul apart. Its advanced features put on a show of their own, adding a whole new dimension to your ride and connecting directly to your senses.

#### WIRELESS CHARGING<sup>1,3</sup>

keeps your smartphone fully charged while you're on the road

#### 10.25" MULTIMEDIA INTERFACE<sup>1,4</sup>

with integrated touch screen navigation

#### HARMAN KARDON PREMIUM AUDIO<sup>1,10</sup>

delivers crystal clear and balanced sound

#### SOUND-REACTIVE SPEAKER LIGHTS<sup>1</sup>

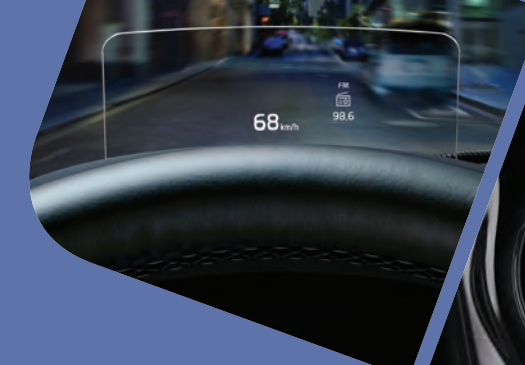
pulse to the beat of your favourite music

#### HEADS-UP DISPLAY (HUD)<sup>1</sup>

lets you keep your eyes on the road by subtly projecting key driving information on a secondary screen above the steering wheel

#### SMART KEY WITH PUSH-BUTTON START<sup>1</sup>

lets you start your vehicle with your key in your pocket



<sup>1</sup> Available feature. See features page or visit [kia.ca](http://kia.ca) for full details.



**DUAL-ZONE AUTOMATIC CLIMATE CONTROL<sup>1</sup>**

lets you set your ideal cabin temperature

**HEATED SEATS AND STEERING WHEEL<sup>1</sup>**

keep you toasty warm during Canadian winters

**AIR-COOLED SEATS<sup>1</sup>**

help you stay cool with three fan levels

**POWER ADJUSTABLE FRONT SEATS<sup>1</sup>**

lets you customize the seat base and back positioning

**POWER SUNROOF<sup>1</sup>**

for that wide-open, blue sky feeling

**EASY CARGO ACCESS**

for up to 1,758 litres (62.1 cu. ft.) of cargo space

# LOOKS GREAT ON THE INSIDE

Soul's roomy interior comfortably seats five and is enhanced by the 60:40 split-folding rear seats that let you adapt the space to different cargo and passenger needs.

<sup>1</sup> Available feature. See features page or visit [kia.ca](http://kia.ca) for full details. International model shown.



# SAFETY NEVER TAKES A DAY OFF

Advanced sensor systems, strategically placed airbags and breakthroughs in material design, that have led to stronger body construction, are just a few of the ways Kia never stops working to help maximize your protection.

2020  
IIHS  
TOP  
SAFETY  
PICK

When equipped with Forward Collision Avoidance Assist and LED headlights.



#### FORWARD COLLISION AVOIDANCE ASSIST<sup>1,2</sup>

is designed to detect and alert you if a potential front collision is imminent, and can also automatically apply the brakes, if necessary

#### BLIND-SPOT DETECTION SYSTEM<sup>1,2</sup>

uses radar to detect vehicles in your blind spot and can give visual and audible alerts to help you avoid hazardous lane changes

#### REAR CROSS TRAFFIC ALERT AND COLLISION AVOIDANCE ASSIST<sup>1,2</sup>

uses radar sensors to monitor the area to the left and right, and warn or even actively apply the brakes if there's traffic approaching from either side

#### DRIVER ATTENTION ALERT<sup>1,2</sup>

monitors for driving abnormalities and provides fatigued drivers with an alert

<sup>1</sup> Available feature. See features page or visit [kia.ca](http://kia.ca) for full details.

## UVO<sup>®</sup> | Intelligence<sup>™</sup>

It connects, checks, finds and reminds – from the convenience of your smartphone<sup>1,3,5</sup>



Free for the first three years. <sup>1</sup> Available feature. See features page or visit [kia.ca](http://kia.ca) for full details.

## STAY CONNECTED



Use Apple CarPlay<sup>®</sup> and Android Auto<sup>™</sup> smartphone voice commands to send and receive messages, navigate to your destination and control your music.<sup>3,8,9</sup>

# NOW IT'S TIME TO ZERO IN

Which Soul is right for you?

## LX

### EXTERIOR

- 16" steel wheels with covers
- Temporary spare tire
- Automatic headlights
- Halogen headlights
- Solar glass
- Rear privacy tint glass
- Body coloured sideview mirrors
- Heated sideview mirrors
- Body coloured door handles
- Splash guards

### SAFETY

- 6 airbags (dual advanced front, dual side curtain, dual front side seat)
- Electronic stability control (ESC)
- 4-wheel anti-lock braking system (ABS)
- Hill-assist control (HAC)
- Tire pressure monitoring system (TPMS)
- Rearview camera<sup>2</sup>

### TECHNOLOGY

- Intelligent Variable Transmission (IVT)
- 7" Display audio
- AM/FM/MP3 radio
- 6-speaker audio
- Bluetooth® hands-free cell phone connectivity<sup>3,6</sup>
- Apple CarPlay® and Android Auto™ smartphone integration<sup>3,8,9</sup>
- Steering wheel-mounted audio controls
- 3.5" supervision LCD/TFT instrument cluster
- Drive Mode Select
- Idle 'Stop & Go' technology
- Remote keyless entry
- Power windows

### COMFORT

- Air conditioning
- Cloth seats
- Heated front seats
- 60:40 split-folding rear seats
- Dual-level cargo floor
- Tilt and telescopic steering wheel

## EX adds to or upgrades from LX

### EXTERIOR

- 16" alloy wheels
- Halogen bi-function projection headlights
- LED positioning lights
- LED daytime running lights
- Projection fog lights
- Sideview mirror signal repeaters
- Rear silver bumper accent
- Gloss black and chrome grille

### SAFETY

- Lane keeping assist (LKA)<sup>2</sup>
- Driver attention alert system (DAA)<sup>2</sup>
- Blind-spot detection system (BSD)<sup>2</sup>
- Rear cross-traffic collision alert and avoidance assist<sup>2</sup>
- Forward collision-avoidance assist (FCA)<sup>2</sup>
- Heated washer nozzle

### TECHNOLOGY

- USB charging port
- Cruise control
- Wireless phone charger<sup>3</sup>
- Obstacle-detecting front windows

### COMFORT

- Heated steering wheel
- Leather-wrapped steering wheel
- Leather-wrapped gear shift knob
- Rear centre armrest

## EX+ adds to or upgrades from EX

### EXTERIOR

- 17" alloy wheels
- LED headlights
- LED fog lights
- LED taillights
- Power sunroof

### COMFORT

- Cloth and leather seats (synthetic)
- Adjustable rear seat headrests
- LED interior lighting

## EX PREMIUM adds to or upgrades from EX+

### EXTERIOR

- 18" alloy wheels

### TECHNOLOGY

- 10.25" multimedia interface with integrated navigation<sup>4</sup>
- SiriusXM satellite radio<sup>6</sup>
- Auto-dimming rearview mirror
- UVO Intelligence™ connected car services<sup>3,5</sup>
- Smart key with push-button start
- Sound-reactive mood lights

### COMFORT

- Dual-zone automatic climate control
- Gloss black and leather interior accents

## GT-LINE LIMITED adds to or upgrades from EX PREMIUM

### EXTERIOR

- Sport bumpers
- Side sill accents
- Rain sensing wipers

### SAFETY

- Advanced forward collision-avoidance assist (FCA)<sup>2</sup>

### TECHNOLOGY

- Heads-up display (HUD) system
- Harman Kardon® premium audio system<sup>10</sup>
- Smart cruise control (SCC)<sup>2</sup>

### COMFORT

- Leather seats
- 8-way power adjustable driver's seat
- 2-way driver's seat lumbar support
- Power adjustable front passenger's seat
- Heated rear seats
- Air-cooled front seats
- Sport steering wheel (D-shaped)



# WHAT'S UNDER THE HOOD



## MECHANICAL

Engine type	2.0L 4-cylinder MPI
Horsepower	147 hp @ 6,200 rpm
Torque	132 lb.-ft. @ 4,500 rpm
Transmission	Intelligent Variable Transmission (IVT)
Drive type	Front wheel drive (FWD)
Recommended fuel	Regular unleaded



## MEASUREMENTS

Fuel tank capacity	54 L
Cargo capacity, rear seats folded	1,758 L (62.1 cu. ft.)
Cargo capacity, rear seats up (with rear cargo floor lowered)	663 L (23.4 cu. ft.)

Please visit [kia.ca](http://kia.ca) for full vehicle specifications and the latest fuel consumption figures

# PICK YOUR PERFECT COLOUR



Snow White Pearl



Gravity Grey



Onyx



Lunar Orange<sup>^^</sup>



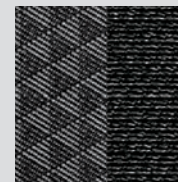
Inferno Red<sup>\*</sup>



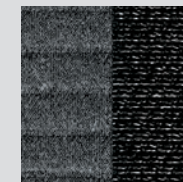
Neptune Blue<sup>\*</sup>

<sup>\*</sup>Not available on LX models. <sup>^^</sup>Not available on GT Line models. Some seating, paint and trim configurations may be limited. Visit [kia.ca](http://kia.ca) for full details.

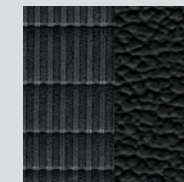
## SEATING



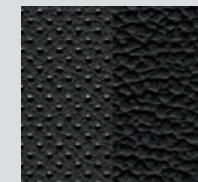
Black woven cloth



Black knit cloth



Black cloth/leather



Black leather

## WHEELS



16" steel wheel covers



16" alloy wheels



17" alloy wheels



18" alloy wheels

# LET'S GET PERSONAL

Genuine Kia Accessories are built to fit right, work right and look great



All-weather liner



Cargo net



Remote starter



Sport pedals

Accessory wheels



Available accessories may vary. See Dealer for details. Images shown for illustration purposes only.



**NAVI**  
SUBSCRIPTION SERVICE

Get access to free downloads of map software updates for 10 years after purchase of your eligible Kia.

Visit [kia.ca/kianavi](http://kia.ca/kianavi) to find out more.



With your new vehicle, enjoy access to SiriusXM® satellite radio from anywhere you go – while you're on the road, using the smartphone app, online, or even through your smart TV.

Free for the first 3 months. See your Kia dealer or visit [kia.ca](http://kia.ca) to find out more.

# WE'VE GOT YOU COVERED<sup>11</sup>

Kia engineers are passionate about producing vehicles that are exceptionally well-designed and reliable. Their dedication to quality and attention to detail give Kia the confidence to back every model with an outstanding warranty program.



**5-year/  
100,000 km**

Worry-free comprehensive warranty



**5-year/  
100,000 km**

Limited powertrain warranty



**5-year/  
unlimited km**

24-hour roadside assistance

The Kia 5-year/100,000-km warranty includes various warranties and roadside assistance. Some restrictions apply. For more information call us at 1-877-542-2886 or visit to [kia.ca](http://kia.ca).

1. Available feature. See features page or visit [kia.ca](http://kia.ca) for full details. 2. None of the features we describe are intended to replace the driver's responsibility to exercise due care while driving and are not a substitute for safe driving practices. Some features may have technological limitations. For additional information regarding the various features, including their limitations and restrictions, please refer to your vehicle's Owner's Manual. 3. Compatible smartphone required. Data rates may apply, please check with your wireless service provider. For wireless charging, certain smartphones may require a wireless charging-compatible case. 4. When equipped with the navigation system, French voice commands may be limited. 5. UVO Intelligence only available on select models and trims. Specific functionality may vary between models and trims. Destination Search is only available on vehicles with a navigation head unit. Certain functions are only accessible on the smartphone app and/or customer web portal and/or in-vehicle head unit. Service is free for the first three years from the day the vehicle was first registered. Monthly subscription may be applicable after the free period. Please consult your dealer for details. 6. SiriusXM satellite radio service includes 3 month trial and is available in the 10 provinces and three territories of Canada, and the 48 contiguous states of the U.S. Monthly subscription sold separately after three trial months. 7. The Bluetooth word mark and logos are registered trademarks owned by Bluetooth SIG, Inc. 8. Apple, the Apple logo, CarPlay, and iPhone are trademarks of Apple Inc., registered in the US and other countries. App Store is a service mark of Apple Inc. 9. Google, Google Play, Google Maps, and Android Auto are trademarks of Google Inc. 10. Harman Kardon is a registered trademark of Harman International Industries, Inc. All rights reserved. 11. The Kia 5-year/100,000-km warranty includes various warranties and roadside assistance. Some restrictions apply. For more information call us at 1-877-542-2886 or visit to [kia.ca](http://kia.ca).

We make every effort to ensure that the product information in this brochure is accurate at the time of printing. Occasional changes in production, that affect the standard or optional equipment included on a specific model, may occur after printing which will not be reflected in this brochure. Kia Canada Inc. reserves the right to make these changes without notice or obligation. For this reason, please rely on [kia.ca](http://kia.ca) or your local Kia dealer for the very latest product information. Some vehicles shown may include optional equipment or may not be exactly as shown. Kia Canada Inc., by the publication and dissemination of this material, does not create any warranties, either expressed or implied, to any Kia products. Reproduction of the contents of this material without the expressed written approval of Kia Canada Inc. is prohibited. © Copyright 2020 Kia Canada Inc. Printed in Canada, August 2020.





Want to learn even more about Soul? We've got all the details for you at

[kia.ca](http://kia.ca)



From its humble beginnings over 75 years ago as a bicycle parts manufacturer, Kia Motors has emerged as a major global player in the automotive market. "Kia" means to "arise out of Asia" and today, Kia has truly risen as a company producing an award winning vehicle line-up, surpassing customer expectations through continuous automotive innovation. That is "The Power to Surprise".



The Power to Surprise