

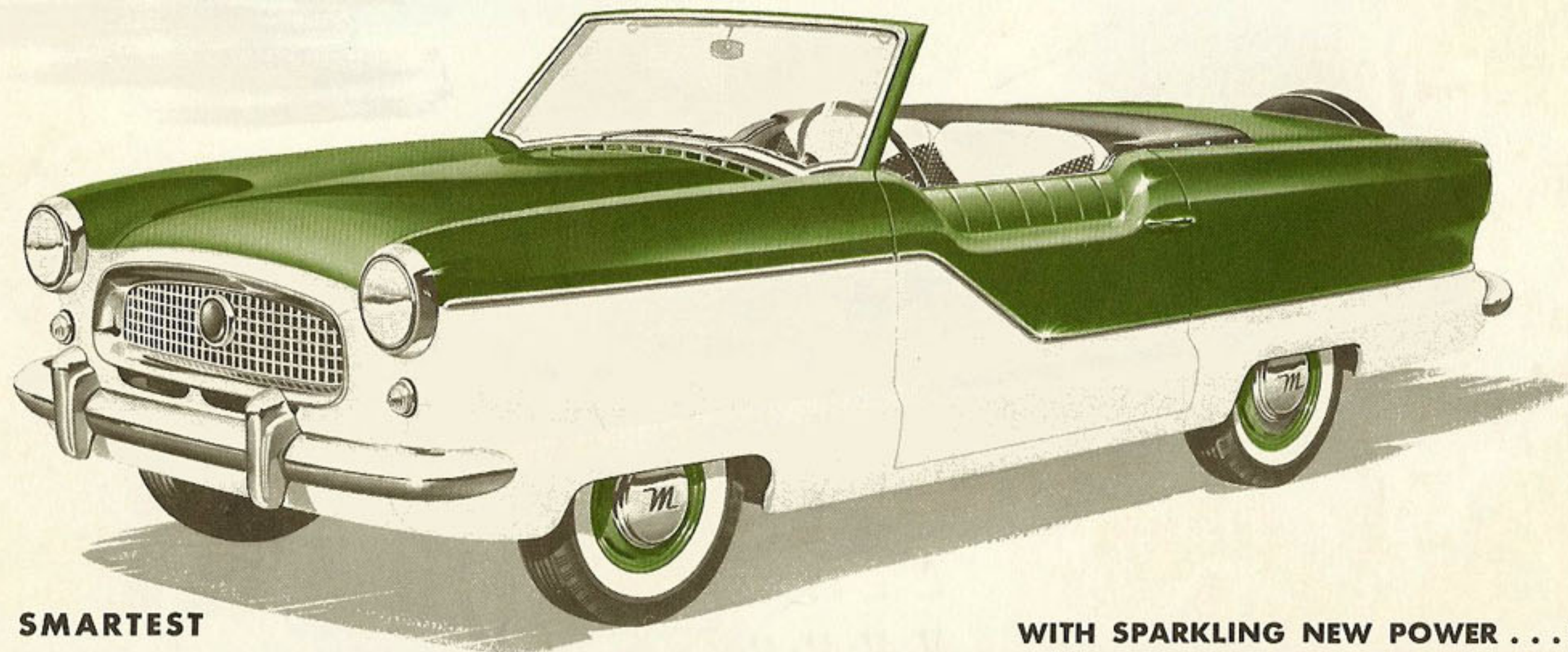


ANNOUNCING THE

Amazing New, Blazing New

METROPOLITAN

"1500"



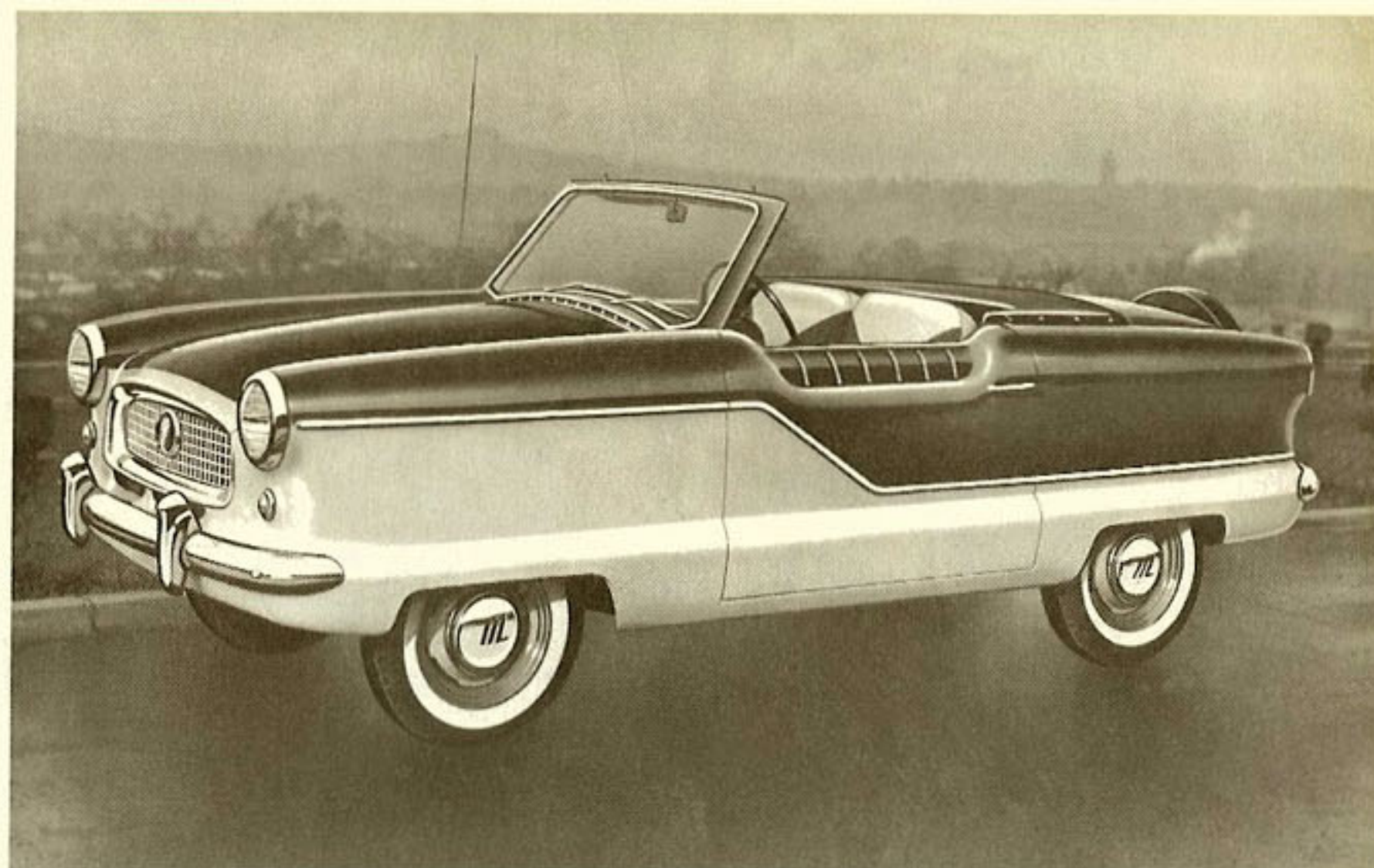
**WORLD'S SMARTEST
SMALLER CAR!**

**WITH SPARKLING NEW POWER . . . SPIRITED
NEW PERFORMANCE . . . CRISP NEW STYLING!**



**EXCITINGLY
NEW
AND DIFFERENT!**

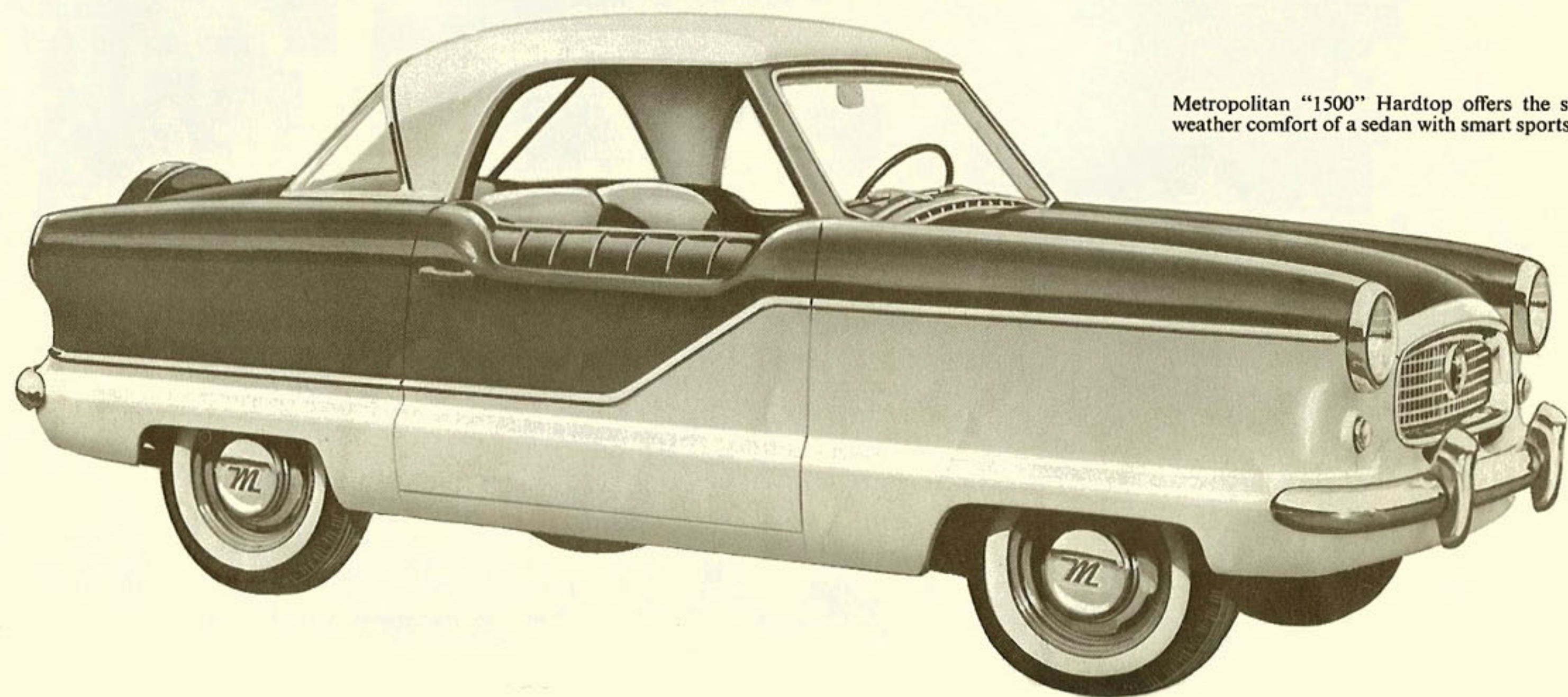
Here is smart foreign-car flavor with all of the convenience and comfort associated with American-made cars. It's a head-turning, crowd stopping gem of a car . . . and it's one you'll never tire of driving. Its sparkling new power, sensational handling ease and responsiveness make it a joy in heavy traffic or on the open road. There has never been a car that offered so much to so many as the smart new, all new Metropolitan "1500". Take the wheel and see.



Metropolitan "1500" Convertible (above) is a dashing, sports-type car with top either up or down.



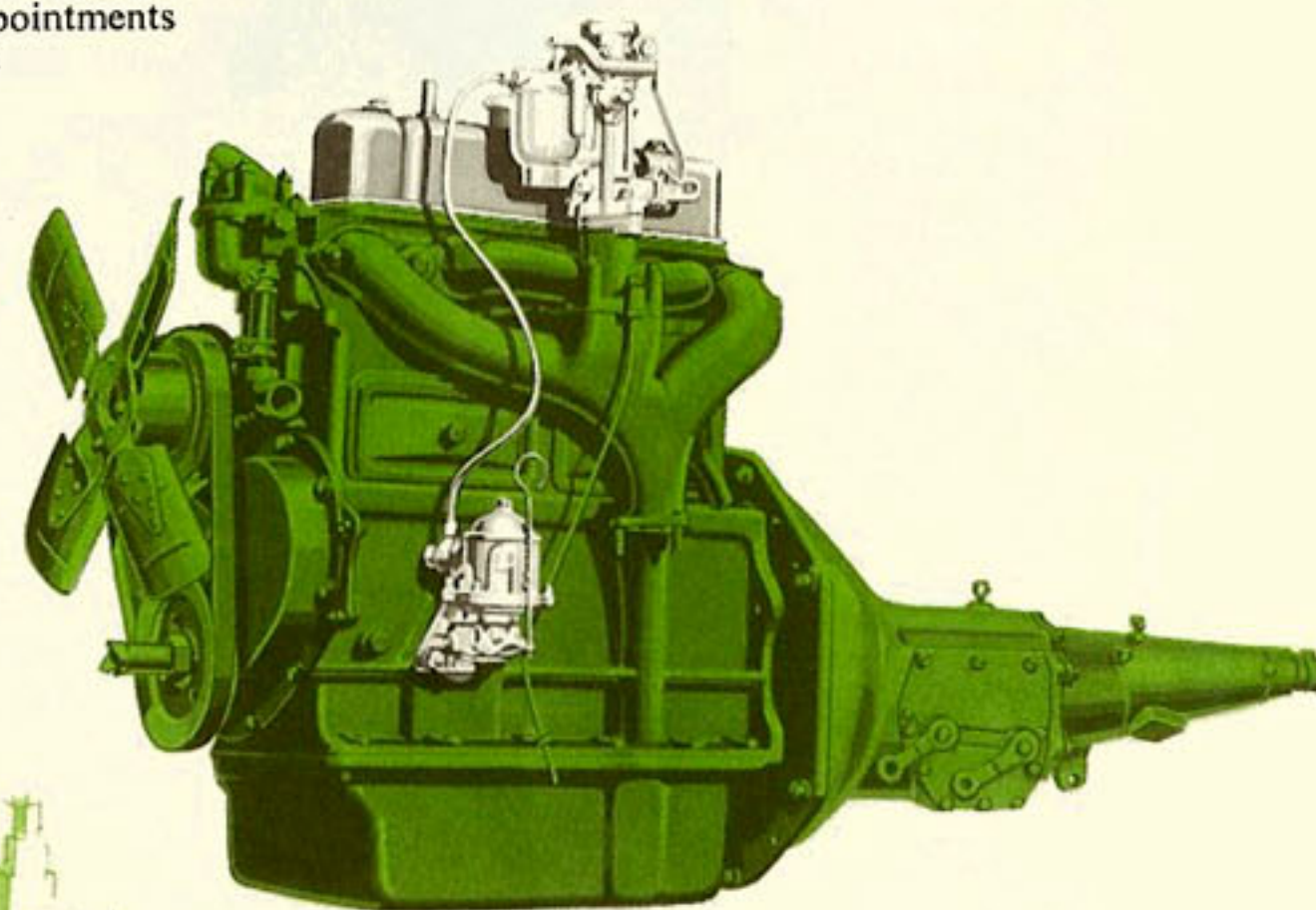
Metropolitan "1500" Hardtop offers the snug, all weather comfort of a sedan with smart sports styling.



24% HIGHER TORQUE levels out the hills, gives you more smooth power on straightaway driving, and polo-pony response that whisks you through heavy traffic.

YES, YOU CAN PARK parallel to the curb with greater ease! Slip right in, hop out, be done with your shopping and gone again while the gas guzzling "dinosaurs" are still going round and round the block.

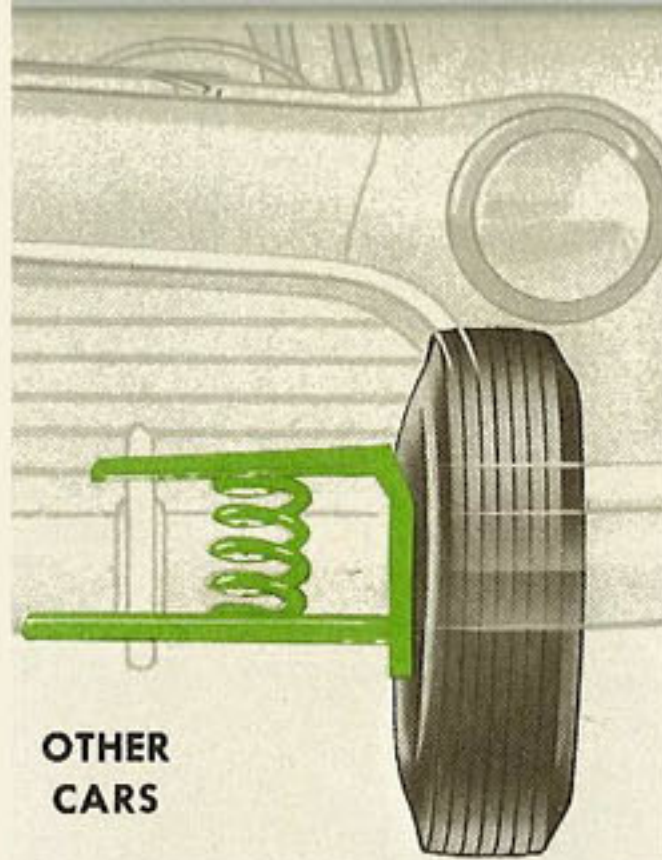
DISTINCTION WITH A DIFFERENCE—Full-width front seat has luxuriously comfortable coil spring and foam rubber construction, upholstered in smart fabrics with durable vinyl plastic. Custom appointments add to motoring pleasure.



LOWER UPKEEP! This thrifty new Metropolitan powerplant—the famous Austin A-50 overhead valve engine—squeezes more miles out of every drop of gas; gives you up to 40 miles per gallon!

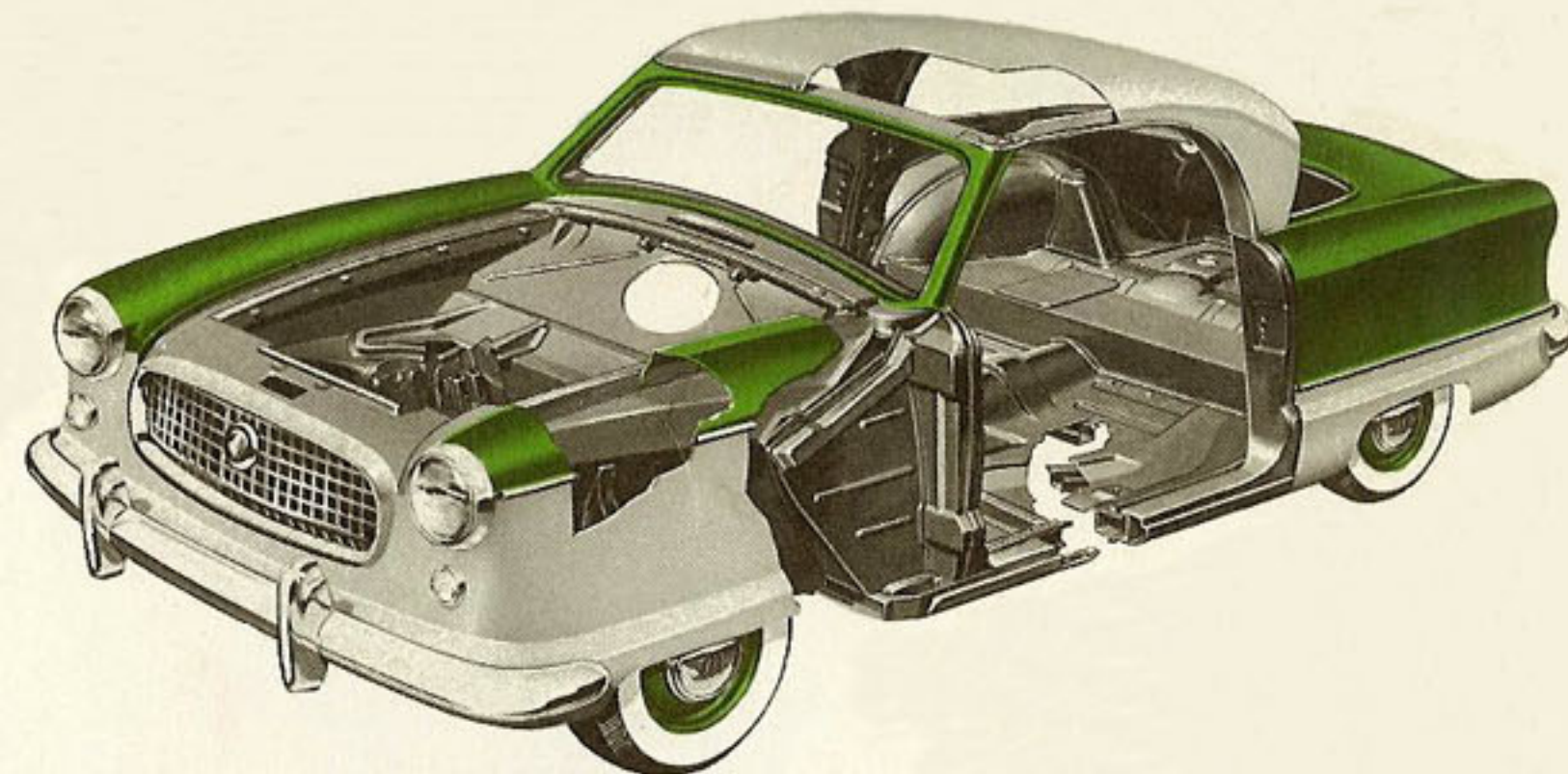


METROPOLITAN



**OTHER
CARS**

BIG CAR RIDE! Drawing above shows you why, for the first time, you get the riding comfort of the costliest big cars in a lowest-priced car. See how longer "Deep Coil" springs on Metropolitan (left, above) actually soak up road shocks three times better than ordinary short, stiff springs (right, above). Springs are braced outward like "Sea Legs" to fight sway or roll on curves.



METROPOLITAN, like all American Motors cars, is built with frame and body a single, rigid, all-welded structure. This modern type of construction is safer and stronger than ordinary methods. Passengers are literally wrapped in a "cradle of steel" with sturdy steel protection above, below and to the sides. Metropolitan construction gives a double-lifetime of service, too, with lasting freedom from body bolt squeaks and rattles.

SPECIFICATIONS

BODY—Double Safe Single Unit Car Construction. Bonderized for rust protection. Wheelbase 85", Overall length 149½", Width 61½", Loaded Height 54½", Front Tread 45⅝", Rear Tread 44⅜".

MECHANICAL—Overhead valve Austin A-50 engine, In-line 4 cylinders, Displacement 90.89 cu. in., Bore 2⅞", Stroke 3½", 52 BHP @ 4500 RPM, Torque 77 lb. ft. @ 2500 RPM, 7.2:1 Compression Ratio. Single Zenith down-draft carburetor. Oil-bath type carburetor air cleaner.

Four-ring aluminum pistons. Deep Coil Ride suspension. Coil Springs at front, semi-elliptical rear springs. Hotchkiss type power drive. Hydraulic internal expanding Girling brakes. Total effective brake lining area, 76.8 sq. in. Three-speed synchromesh transmission, steering post shift. Hydraulically operated clutch linkage. Rear axle ratio 4.22:1. Tubeless tires, 5.20 x 13—4 ply. 10½ gallon fuel tank. Shipping weight, 1835 lb. (Convertible), 1875 lb. (Hardtop). Crankcase capacity (less filter) 4 qts. Cooling system ca-

capacity (with heater) 8 qts. Electrical system, 12-volts.

EQUIPMENT—Standard: Two-tone paint. Directional turn signals. Electrically operated dual windshield wipers. Map light. Cigarette lighter. Dual sun visors. Foam rubber front seat cushion. Cloth and vinyl upholstered seats. Vinyl plastic door trim, side panel. Continental rear tire mount and tire cover. Extra Cost: Weather Eye Heating and Ventilating System. Custom radio. Whitewall tubeless tires. Partial flow oil filter (Dealer installed).

AMERICAN MOTORS CORPORATION, WHOSE POLICY IS ONE OF CONTINUOUS IMPROVEMENT, RESERVES THE RIGHT, HOWEVER, TO DISCONTINUE OR CHANGE SPECIFICATIONS, MODELS OR PRICES AT ANY TIME WITHOUT NOTICE AND WITHOUT INCURRING OBLIGATION.

**SOLD AND SERVICED BY
AMERICAN MOTORS DEALERS
EVERYWHERE**