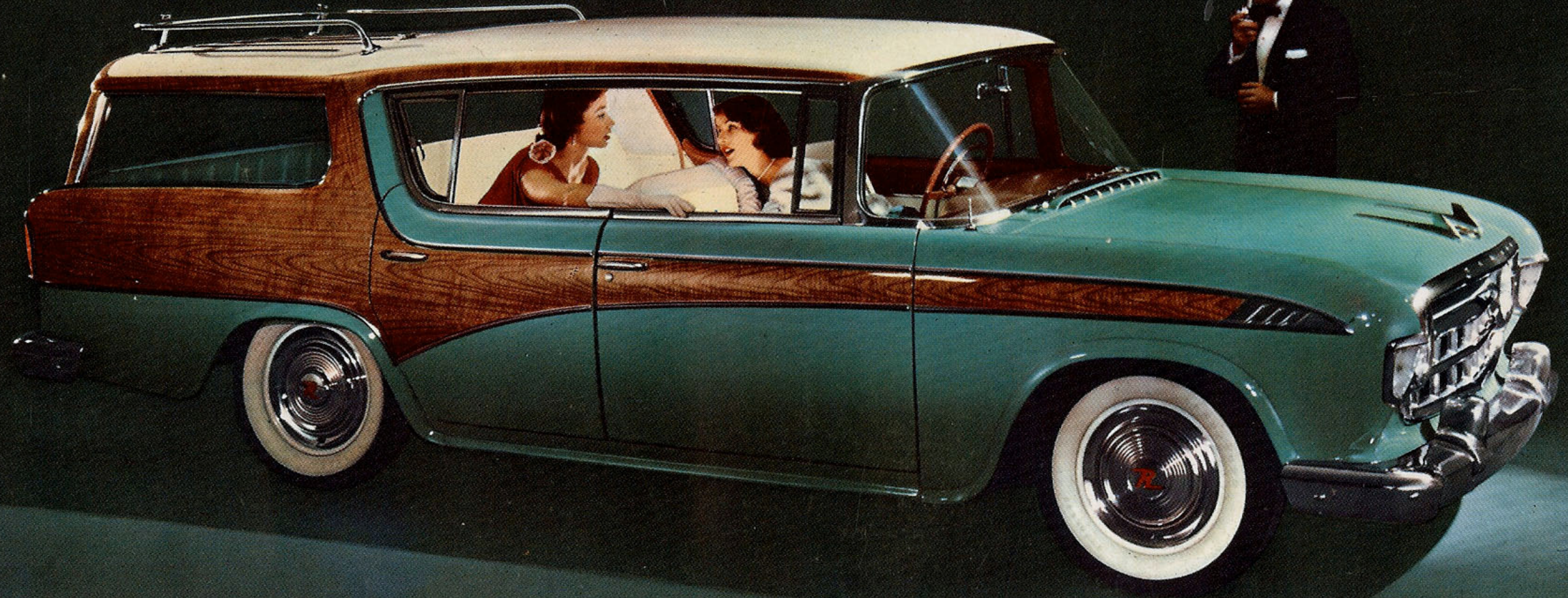


The NEW CONCEPT in Station Wagon Travel

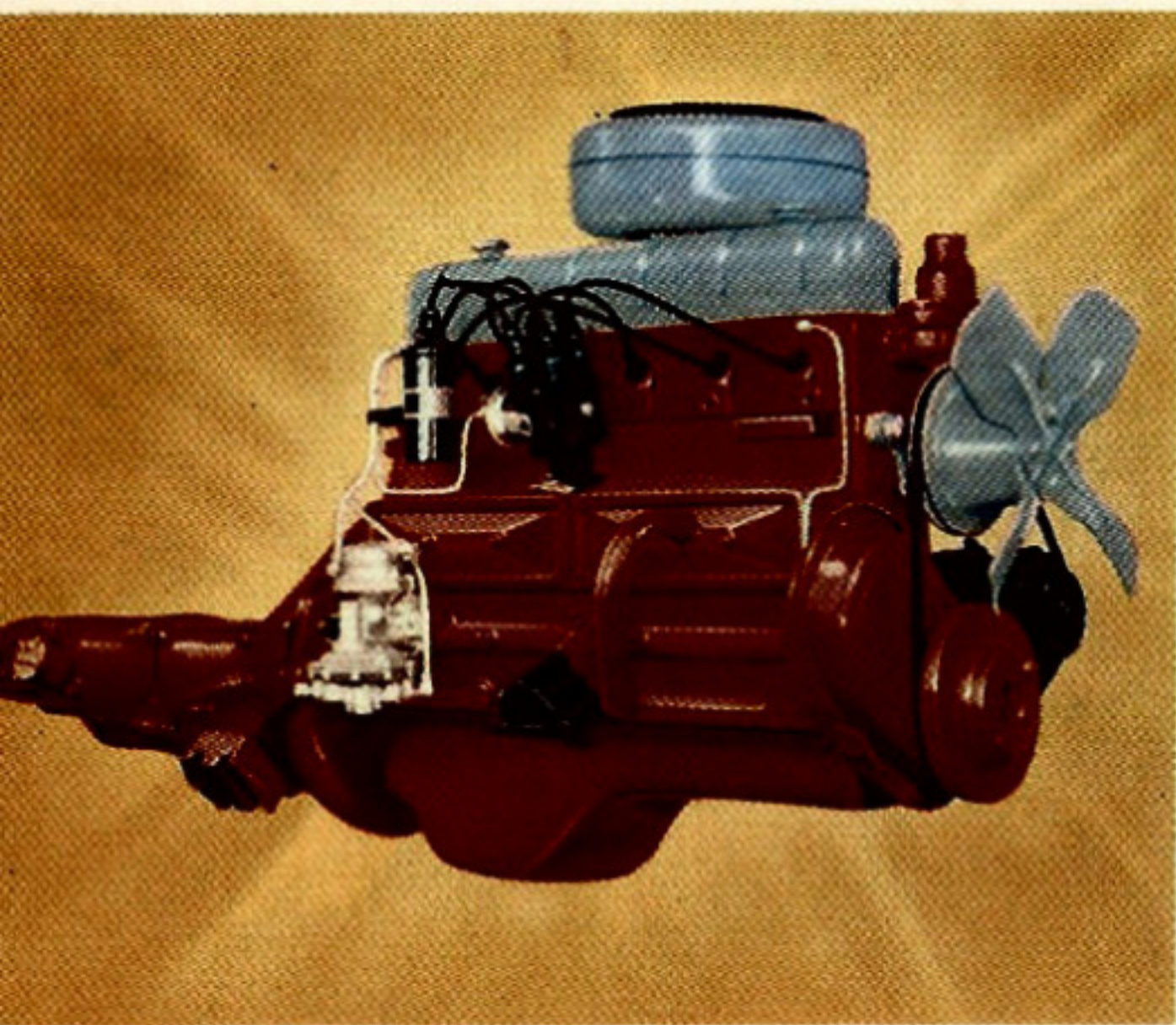


*The All-New  
All-American*

*Rambler*

CROSS COUNTRY STATION WAGON



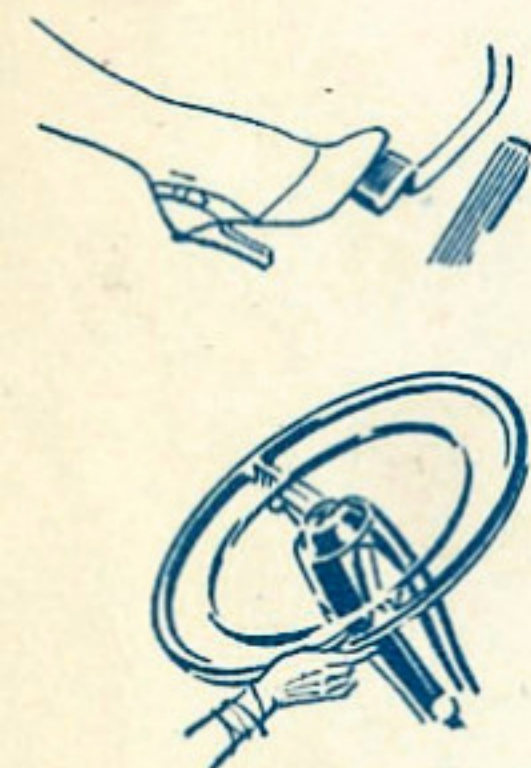


### ALL-NEW RAMBLER 120-H.P. TYPHOON OHV ENGINE

This new powerplant gives scat-back getaway and record economy, coupled with brand new overhead-valve zoom . . . the result of a powerplant that performs miracles in getting the maximum energy from every drop of gasoline. Many owners report best fuel economy ever. A choice of three transmissions is offered—Standard Syncromesh, Automatic Overdrive and Dual-Range Hydra-Matic.

### POWER ASSIST FEATURES FOR YOUR SAFETY AND CONVENIENCE

The toe-touch response of Power Brakes . . . the finger-tip response of Power Steering . . . are available to you, as optional equipment, on the 1956 Rambler. Rambler Power Brakes, standard on custom models, actually reduce pedal pressure and effort by 40%. Rambler direct-action Power Steering lets you drive and park with 75% less effort with a safe "feel of the wheel."



AMERICAN MOTORS MEANS MORE FOR AMERICANS



AMERICAN MOTORS, WHOSE POLICY IS ONE OF CONTINUOUS IMPROVEMENT, RESERVES THE RIGHT, HOWEVER, TO DISCONTINUE OR CHANGE SPECIFICATIONS, MODELS OR PRICES AT ANY TIME WITHOUT NOTICE AND WITHOUT INCURRING OBLIGATION.

# RAMBLER

## Cross Country Station Wagons

### *Specifications*

**BODY:** Double Safe Single Unit Car Construction, Bonderized for rust protection. Wheelbase 108". Overall length 193.61". Width 71.32". Loaded height 58.57". Front tread 57.75". Rear tread 58". Rear axle road clearance 8.1".

**STATION WAGON MODELS, 4-DOOR:** Super Cross Country. Custom Cross Country. Custom Cross Country Hardtop Convertible.

**MECHANICAL:** Typhoon overhead-valve engine, 6 cylinders, 195.6 cu. in., 120 H.P., 170 lb. ft. torque, 7.47:1 compression ratio. Down-draft single throat carburetor. Integral Iso-Thermal intake manifold. U-Flex lower oil control ring. Deep Coil front suspension. Coil springs, all four wheels. Torque-Tube drive. 9" diameter brakes. Three transmissions: Dual-Range Hydra-Matic, Automatic Overdrive, Standard Syncromesh. 6.40 x 15 tubeless tires. 20-gallon fuel tank. 12-volt electrical system.

**EQUIPMENT:** Custom models shown include as standard equipment: Power Brakes. Foam front cushions. Nylon with vinyl upholstery. Cigarette lighter. Glove box light. Automatic dome light. Custom style stainless steel trim moldings. Hood insulation (Standard on all).

**EXTRA COST EQUIPMENT:** Weather Eye Heating and Ventilating System. All-Season Air Conditioning (heats, cools, ventilates). Radio. Airliner Reclining Seats and Twin Travel Beds. Directional Signals. Electric Clock. Chrome wheel discs. Power Steering. Power Brakes (Standard on Custom). Dual-Range Hydra-Matic. Automatic Overdrive. Oil Filter. Oil Bath air cleaner. Solex Glass. Hood ornament. Special leather seat trim (for Customs only). Two-tone colors. Three-tone colors (for Customs only). Back-O-Matic lights. Windshield washers. Whitewall tires. 6-ply tires. Heavy-duty rear springs and shock absorbers.

**DEALER ACCESSORIES:** Seat Belts. Travel Rack Leather Straps.

**ROBERT L. YOUNG & SONS, INC.**

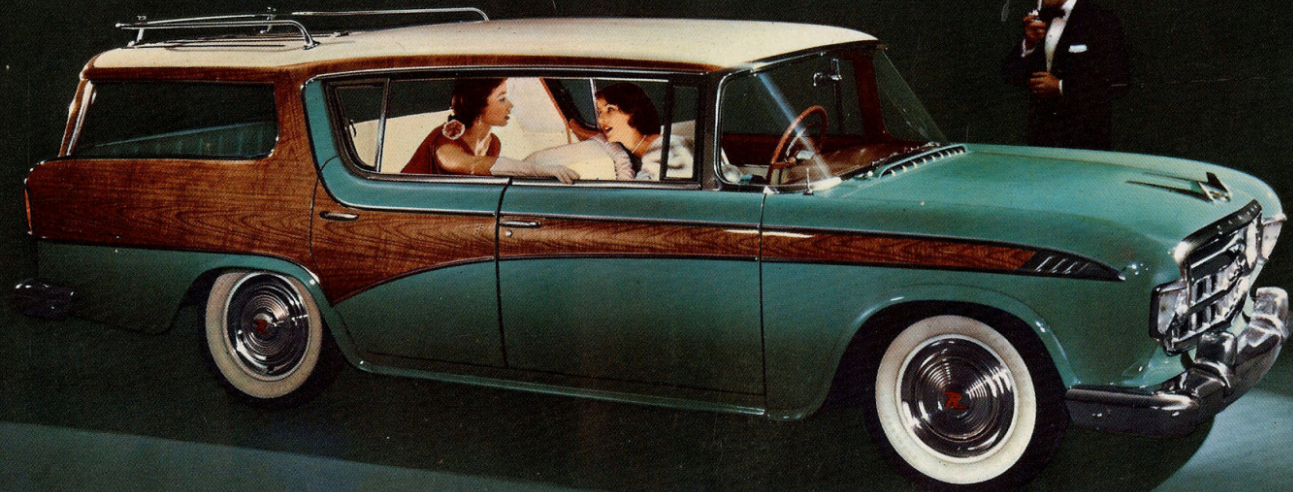
2111 FREEMANBURG AVENUE

EASTON, PENNSYLVANIA

PHONE 2-5771 2-1216



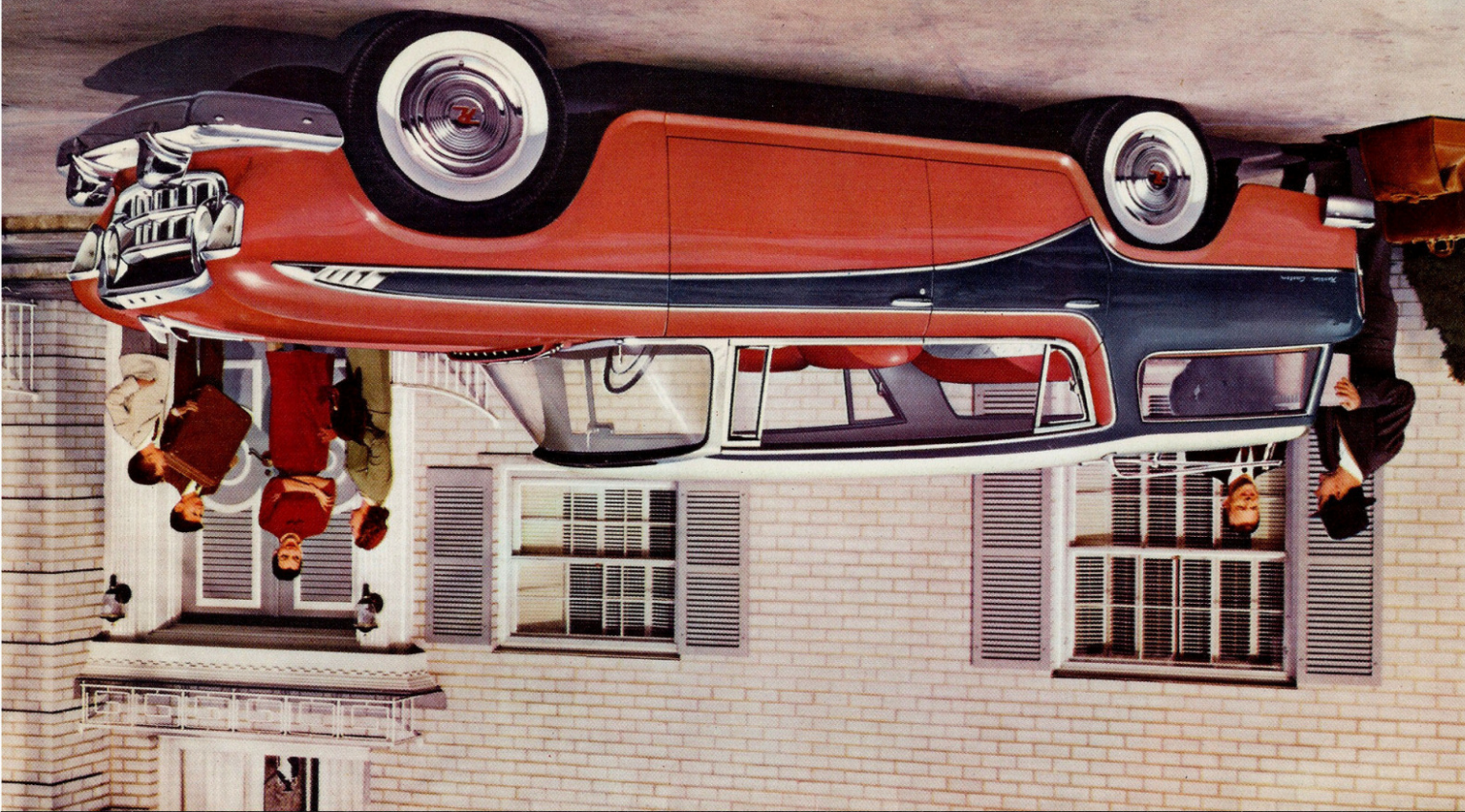
## The NEW CONCEPT in Station Wagon Travel



The All-New  
All-American

*Rambler*

CROSS COUNTRY STATION WAGON

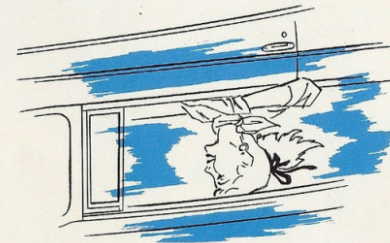


## NOW! The World's First Hardtop Station Wagon



Never before has a car so practical offered such sheer luxury. Here are the most beautiful interiors ever seen in a station wagon. You can choose from washable plastics, nylon fabrics and genuine leathers, color-keyed to harmonize with the 56 exterior body color combinations. Full-width seats provide luxurious comfort.

Yes—it's here today! The car thousands have asked for—a true *hardtop* station wagon! And it's yours only in Rambler. Now you can enjoy all the fun of a fresh-air convertible and the smart, luxurious utility of a station wagon—all in one brilliant automobile—the All-New Rambler for 1956. Never before have you seen a car so dashing—smart—so much fun to own and to drive—yet so practical for family travel or workaday tasks. Rambler has revolutionized travel concepts. Why not learn how? See and drive the newest model of the car that is just so much more fun to own . . . the world's first Hardtop Station Wagon—by Rambler!



### RAMBLER

### Cross Country Station Wagons

### *Specifications*

**BODY:** Double Safe Single Unit Car Construction, Bonderized for rust protection. Wheelbase 108". Overall length 193.61". Width 71.32". Loaded height 58.57". Front tread 57.75". Rear tread 58". Rear axle road clearance 8.1".

**STATION WAGON MODELS, 4-DOOR:** Super Cross Country. Custom Cross Country. Custom Cross Country Hardtop Convertible.

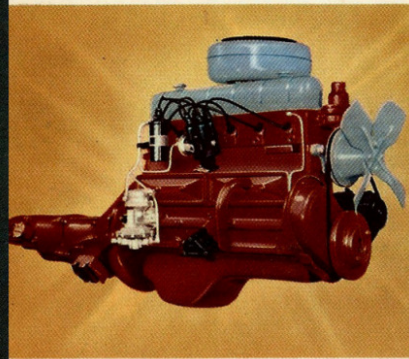
**MECHANICAL:** Typhoon overhead-valve engine, 6 cylinders, 195.6 cu. in., 120 H.P., 170 lb. ft. torque, 7.47:1 compression ratio. Down-draft single throat carburetor. Integral Iso-Thermal intake manifold, U-Flex lower oil control ring. Deep Coil front suspension. Coil springs, all four wheels. Torque-Tube drive. 9" diameter brakes. Three transmissions: Dual-Range Hydra-Matic, Automatic Overdrive, Standard Syncromesh. 6.40 x 15 tubeless tires. 20-gallon fuel tank. 12-volt electrical system.

**EQUIPMENT:** Custom models shown include as standard equipment: Power Brakes. Foam front cushions. Nylon with vinyl upholstery. Cigarette lighter. Glove box light. Automatic dome light. Custom style stainless steel trim moldings. Hood insulation (Standard on all).

**EXTRA COST EQUIPMENT:** Weather Eye Heating and Ventilating System. All-Season Air Conditioning (heats, cools, ventilates). Radio. Airliner Reclining Seats and Twin Travel Beds. Directional Signals. Electric Clock. Chrome wheel discs. Power Steering. Power Brakes (Standard on Custom). Dual-Range Hydra-Matic. Automatic Overdrive. Oil Filter. Oil Bath air cleaner. Solex Glass. Hood ornament. Special leather seat trim (for Customs only). Two-tone colors. Three-tone colors (for Customs only). Back-O-Matic lights. Windshield washers. Whitewall tires. 6-ply tires. Heavy-duty rear springs and shock absorbers.

**DEALER ACCESSORIES:** Seat Belts. Travel Rack Leather Straps.

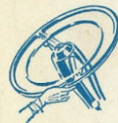
#### ALL-NEW RAMBLER 120-H.P. TYPHOON OHV ENGINE



This new powerplant gives seat-back getaway and record economy, coupled with brand new overhead-valve zoom . . . the result of a powerplant that performs miracles in getting the maximum energy from every drop of gasoline. Many owners report best fuel economy ever. A choice of three transmissions is offered—Standard Syncromesh, Automatic Overdrive and Dual-Range Hydra-Matic.

#### POWER ASSIST FEATURES FOR YOUR SAFETY AND CONVENIENCE

The toe-touch response of Power Brakes . . . the finger-tip response of Power Steering . . . are available to you, as optional equipment, on the 1956 Rambler. Rambler Power Brakes, standard on custom models, actually reduce pedal pressure and effort by 40%. Rambler direct-action Power Steering lets you drive and park with 75% less effort with a safe "feel of the wheel."



AMERICAN MOTORS MEANS MORE FOR AMERICANS



ROBERT L. YOUNG & SONS, INC.

2111 FREEMANSBURG AVENUE

EASTON, PENNSYLVANIA

PHONE 2-5771 2-1216

AMERICAN MOTORS, WHOSE POLICY IS ONE OF CONTINUOUS IMPROVEMENT, RESERVES THE RIGHT, HOWEVER, TO DISCONTINUE OR CHANGE SPECIFICATIONS, MODELS OR PRICES AT ANY TIME WITHOUT NOTICE AND WITHOUT INCURRING OBLIGATION.

NSP-56-5199

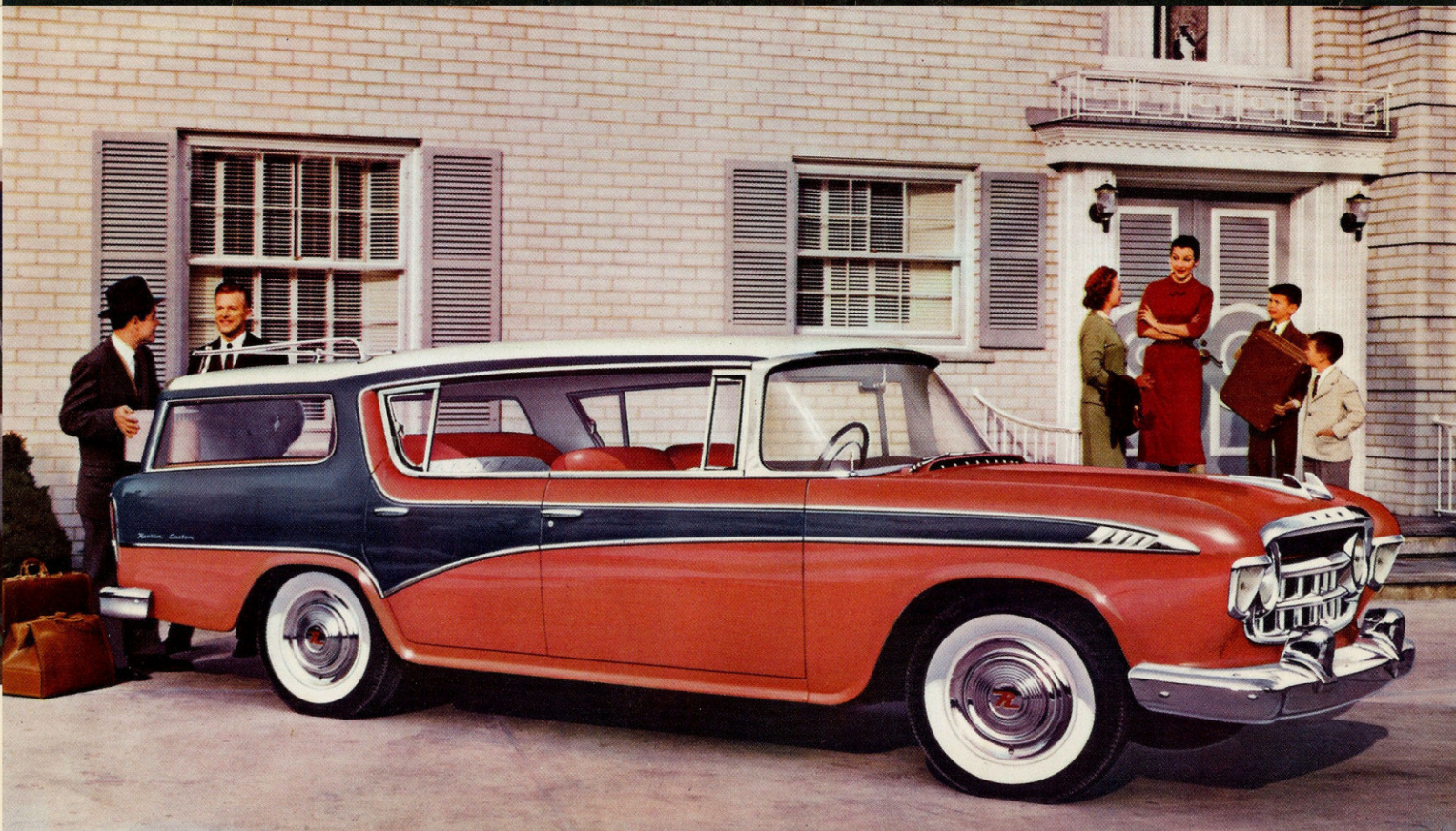
LITHO. IN U. S. A.



The All-New Rambler  
All-American  
CROSS COUNTRY STATION WAGON



The NEW CONCEPT in Station Wagon Travel



NEVER BEFORE has a car so practical offered such sheer luxury. Here are the most beautiful interiors ever seen in a station wagon. You can choose from washable plastics, nylon fabrics and genuine leathers, color-keyed to harmonize with the 56 exterior body color combinations. Full-width seats provide luxurious comfort.



# NOW! The World's First Hardtop Station Wagon



Yes—it's here today! The car thousands have asked for—a true *hardtop* station wagon! And it's yours only in Rambler. Now you can enjoy all the fun of a fresh-air convertible and the smart, luxurious utility of a station wagon—all in one brilliant automobile—the All-New Rambler for 1956. Never before have you seen a car so dashingly smart—so much fun to own and to drive—yet so practical for family travel or workaday tasks. Rambler has revolutionized travel concepts. Why not learn how? See and drive the newest model of the car that is just so much more fun to own . . . the world's first Hardtop Station Wagon—by Rambler!

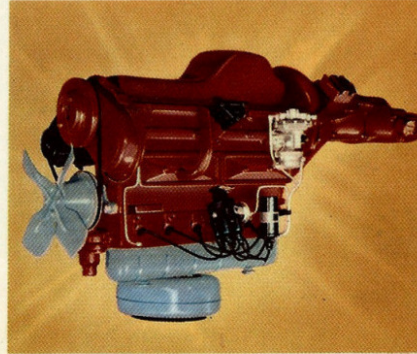
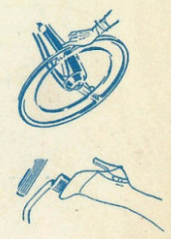
No CENTER POST to block the view in the Rambler Cross Country Hardtop. There's a new thrill to driving in this new concept in station wagons.

AMERICAN MOTORS, WHOSE POLICY IS ONE OF CONTINUOUS IMPROVEMENT, RESERVES THE RIGHT, HOWEVER, TO DISCONTINUE OR CHANGE SPECIFICATIONS, MODELS OR PRICES AT ANY TIME WITHOUT INCURRING OBLIGATION. PHONE 2-5771 EASTON, PENNSYLVANIA

AMERICAN MOTORS MEANS MORE FOR AMERICANS

POWER ASSIST FEATURES FOR YOUR SAFETY AND CONVENIENCE

The toe-touch response of Power Brakes . . . the finger-tip response of Power Steering . . . are available to you, as optional equipment, on the 1956 Rambler. Rambler Power Brakes, standard on custom models, actually reduce pedal pressure and effort by 40%. Rambler direct-action Power Steering lets you drive and park with 75% less effort with a safe "feel of the wheel."



ALL-NEW RAMBLER 120-H.P. TYPHOON OHV ENGINE

This new powerplant gives seat-back getaway and record economy, coupled with brand new overhead-valve zoom . . . the result of a powerplant that performs miracles in getting the maximum energy from every drop of gasoline. Many owners report best fuel economy ever. A choice of three transmissions is offered—Standard Synchronesh, Automatic Over-drive and Dual-Range Hydra-Matic.

STATION WAGON MODELS: 4-DOOR, Super Cross Country, Custom Cross Country, Custom Cross Country Hardtop Convertible. MECHANICAL: Typhoon overhead-valve engine, 6 cylinders, 120 H.P., 170 lb. ft. torque, 7.47:1 compression ratio. Down-draft single throat carburetor. Integral Iso-Thermal intake manifold. U-Flex lower coil front suspension. Coil springs, all four wheels. Torque-Tube drive, 9" diameter brakes. Three transmissions: Dual-Range Hydra-Matic, Automatic Overdrive, Standard Synchronesh. 640 x 15 tubeless tires, 20-gallon fuel tank, 12-volt electrical system. EQUIPMENT: Custom models shown include as standard equipment: Power Brakes, Ram front cushions, Nylon vinyl upholstery, Cigar-ette lighter, Glove box light, Automatic dome light, Custom style stainless steel trim moldings, Hood insulation (Standard on all). EXTRA COST EQUIPMENT: Weather Eye Heating and Ventilating System, All-Season Air Conditioning (heats, cools, ventilates), Radio, Airline Reclining Seats and Twin Travel Beds, Directional Signals, Electric Clock, Chrome wheel discs, Power Steering, Power Brakes (Standard on Custom), Dual-Range Hydra-Matic, Automatic Overdrive, Oil Filter, Oil Bath air cleaner, Solex Class, Hood ornament, Special leather seat trim (for Custom only), Two-tone colors, Three-tone colors (for Customs only), Back-O-Matic lights, Windshield washers, Whitewall tires, 6-ply tires. Heavy-duty rear springs and shock absorbers.

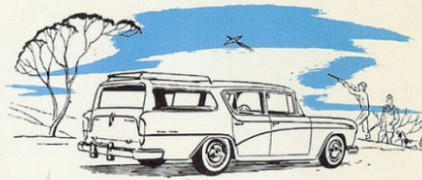
DEALER ACCESSORIES: Seat Belts, Travel Rack Leather Straps.

Cross Country Station Wagons  
RAMBLER

ROBERT L. YOUNG & SONS, INC.  
2111 FREEMANSBURG AVENUE  
EASTON, PENNSYLVANIA  
PHONE 2-5771



# THE *Rolling Rambler* OF THE HIGHWAY...AND THE BEST STATION WAGON BUY OF THEM ALL



4-DOOR RAMBLER CUSTOM CROSS COUNTRY STATION WAGON

They said it couldn't be done! Rambler Cross Country owners said it couldn't be improved upon.

But look at the Cross Country now! It's a white-tie-and-tails town sedan and a space-eating travel car. Wherever you live—city, suburb or farm—see and drive the car built for young American families on the go. It's the All-New, All-American Rambler Cross Country Station Wagon for 1956!



PRICED WITH THE LOWEST . . . AT HOME EVERYWHERE—RAMBLER SUPER CROSS COUNTRY

Meet the practical Rambler that is perfectly at home in any smart setting. Put it to work for you on family travel—business trips—for sports or just sheer fun. Its lower first cost, plus its remarkable operating economy—up to 30 miles a gallon—makes the Rambler Super Cross Country the best station wagon buy on the market.



## ROOM...COMFORT...SAFETY Built Especially For You And Your Family...Unmatched At Any Price!



DOUBLE SAFE SINGLE UNIT CONSTRUCTION brings you new life-guarding safety. With body-and-frame one integral unit, you and your loved ones ride surrounded by a safety belt of steel—above, below and all-around. Your Rambler brings you built-in safety—longer life—greater resale value.



SMART ROOFTOP TRAVEL RACK provides space for extra luggage . . . adds a distinctive style note to America's smartest station wagon.



ROLL-DOWN REAR WINDOW disappears into tail-gate. The one-piece cargo door eliminates upper hinges . . . gives more loading room.



ALL-SEASON AIR CONDITIONING refrigerates—heats—ventilates at lowest price . . . less than cooling systems alone in other cars.



ROOM GALORE for all your gear in the 80 cubic feet of cargo space. The wide one-piece tail-gate provides easy access.

AIRLINER RECLINING SEATS—the peak of travel comfort—adjust to any of four comfortable positions at the touch of a lever. You can nap while someone else drives.



The All-New Rambler Station Wagons are king-size on the inside, yet retain the traditional Rambler compactness and maneuverability on the outside. There's more shoulder room—more hip room—more leg room than you'll find in most \$5,000 cars. A variety of seat arrangements, as illustrated below, permit you to tailor your Rambler to your own individual requirements, whether it be family or utility hauling.

Let your dealer show you how the Rambler gives you the room and comfort you want while meeting your requirements.



A VARIETY OF SEAT ARRANGEMENTS TO MEET YOUR OWN INDIVIDUAL NEEDS.



### RAMBLER STATION WAGON DIMENSIONS

