





T A H O E / S U B U R B A N



 CHEVROLET.

Enjoying life's opportunities in today's multi-faceted world starts with owning the kind of vehicle that gives you more room, more versatility and more power.

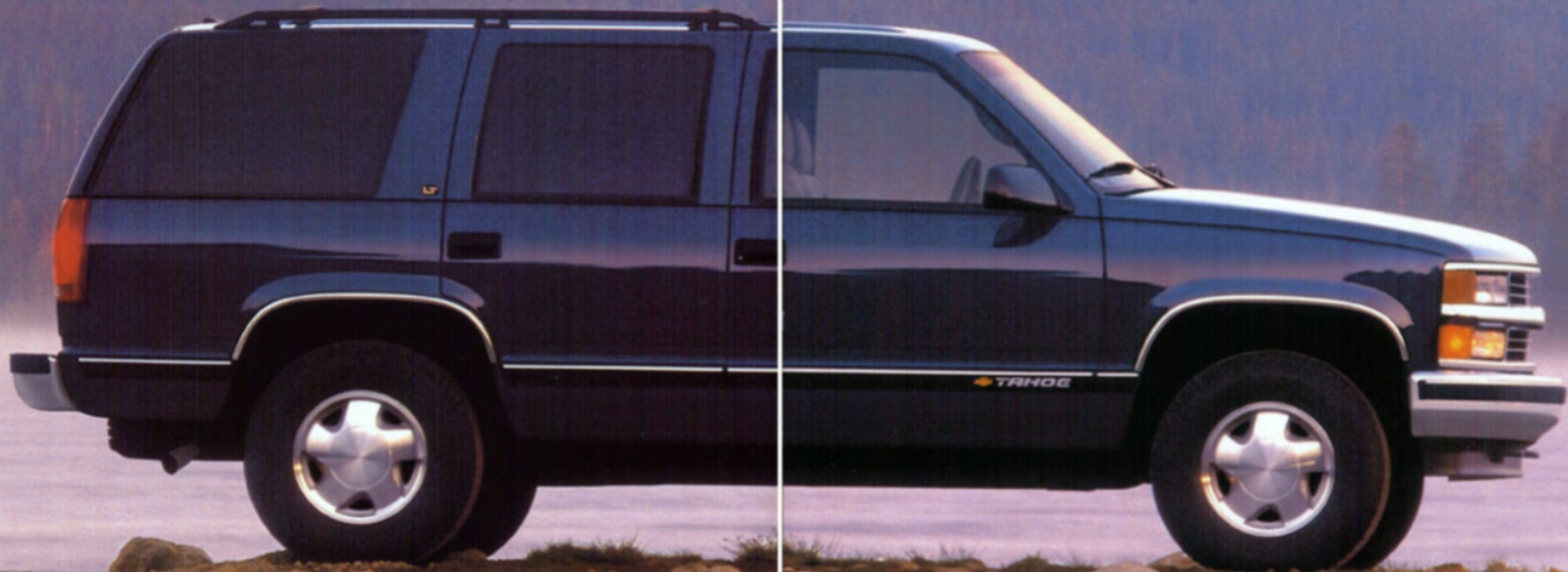
Chevrolet Tahoe and Suburban, two for any kind of road. Perfectly proportioned and superbly appointed, they offer the comfort, roominess and powerful performance that you have always wished for. And, as with all things well thought-out, they impress with elegant styling.

The Tahoe and Suburban – made to measure for the dynamic lifestyle of modern times. And above all, two of the most dependable, longest-lasting cars on the road.



No boundaries, no distractions – just you and your 2-door Tahoe. There is a feeling of joy and confidence you'll get in a Tahoe. Joy, because you know you can go anywhere you like.

And confidence, because you know that a Tahoe is incredibly rugged. But it's also incredibly refined. It is this distinctive blend of strength and understated elegance, that makes a Tahoe such an exceptional choice for adventure. Add boundless size, comfort and versatility – it all sums up in one word: Tahoe.



The Chevrolet Tahoe. Where rugged meets refined. A true all-round talent with four-wheel drive and a level of comfort that redefines the pleasure of driving. Built rock solid and robust, yet so elegant and spacious that you and your passengers will feel pampered

every mile – no matter how tough the terrain. It is Off-Road technology taken to new heights that only Chevrolet could achieve. But with its improved turning radius the Tahoe is just as comfortable in the cut and thrust of city traffic, as well.



Discover yourself in infinite comfort.

You know where you want to go and, in a Tahoe, you know you'll get there fresh and relaxed. In perfect comfort that comes with many amenities and style. The ample room in the Tahoe is something you simply have to experience for yourself. And the host of standard features is impressive as well: height-adjustable steering wheel, power locks and windows, dual front airbags, Air-conditioning – even an electrochromatic rearview mirror that adjusts automatically to reduce nighttime glare. You may choose the optional feature enhancement package which includes 6-way power seat adjusters for the driver and front passenger, heated leather seats and many more features. And you'll definitely want the compass, because road signs may become a rare sight driving your Tahoe all the places it can take you.





Plenty of luggage and plenty of passengers are no burden for the Tahoe.

The Tahoe 4WD takes hauling and towing capability to the extreme – without the least sacrifice in total passenger comfort.

The Tahoe will trailer just about anything, anywhere, effortlessly. It can tow up to 3180 kilos. One look at the standard powertrain line up is all you will need to know that a Tahoe will deliver on its promise. We give you the choice between the 2-door Tahoe with its 173 hp/127 kW 6.5-liter Turbo-Diesel engine or the 4-door Tahoe with its 5.7-liter V8 gasoline engine with 254 hp/187 kW.

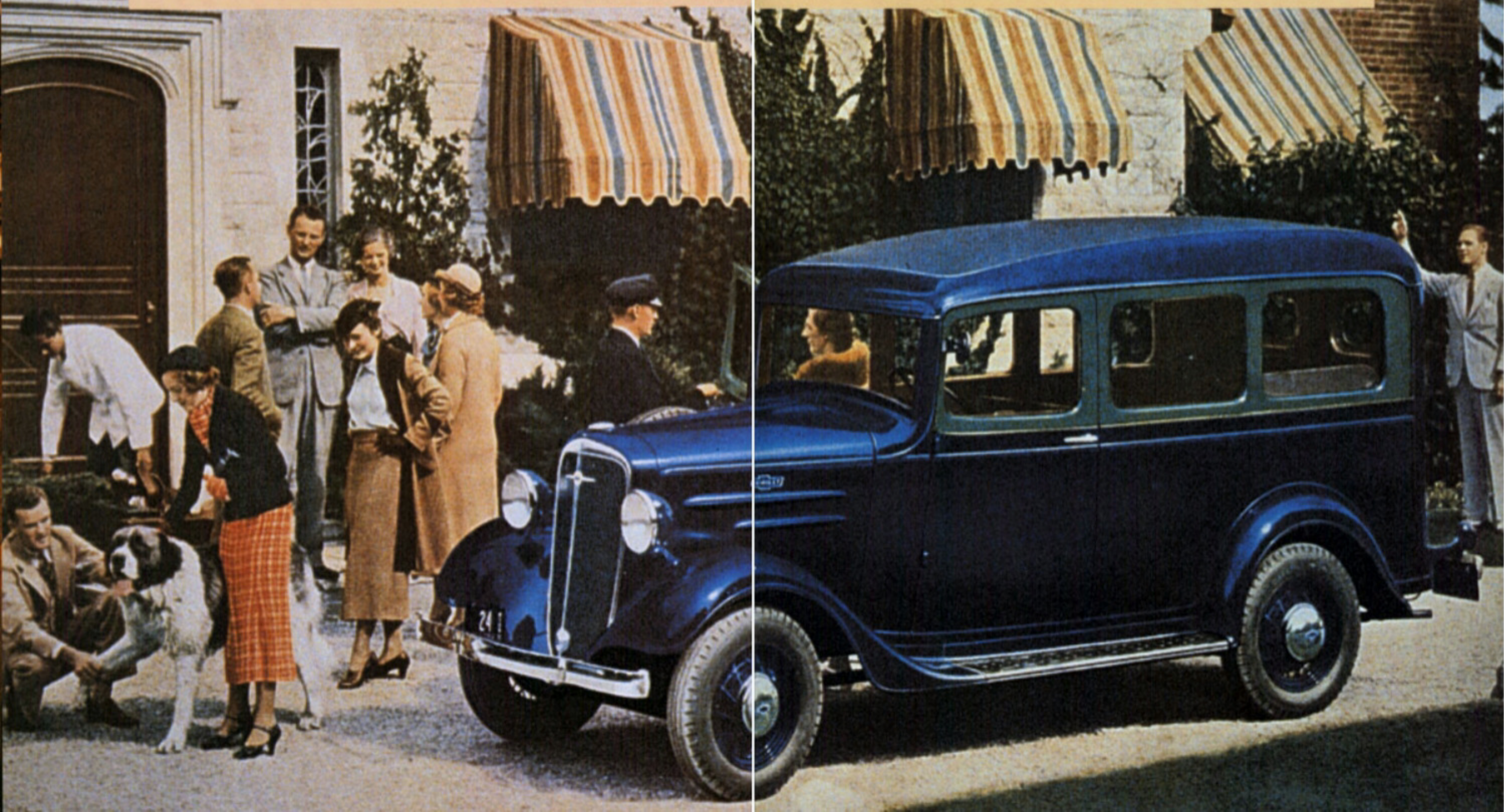
Both powerhouses are supplemented by GM's patented Insta-Trac™ four-wheel drive system, probably the most reliable 4WD technology on the road today: it lets you shift from two-wheel drive to four-wheel drive and back at the press of a button. Where there's a Tahoe, there most definitely is a way.

Versatility was and is

Plenty of room for people and load, and enough power to move it – that was the basic idea for Chevrolet's long history of multipurpose vehicles. It all started more or less with this Suburban Carryall in 1935 which, in 1937, already became a very modern-looking vehicle with improved ride quality through the use of shock absorbers and balloon tires. During the Second World War the Suburban was a common sight on Army bases and

the name of the game.

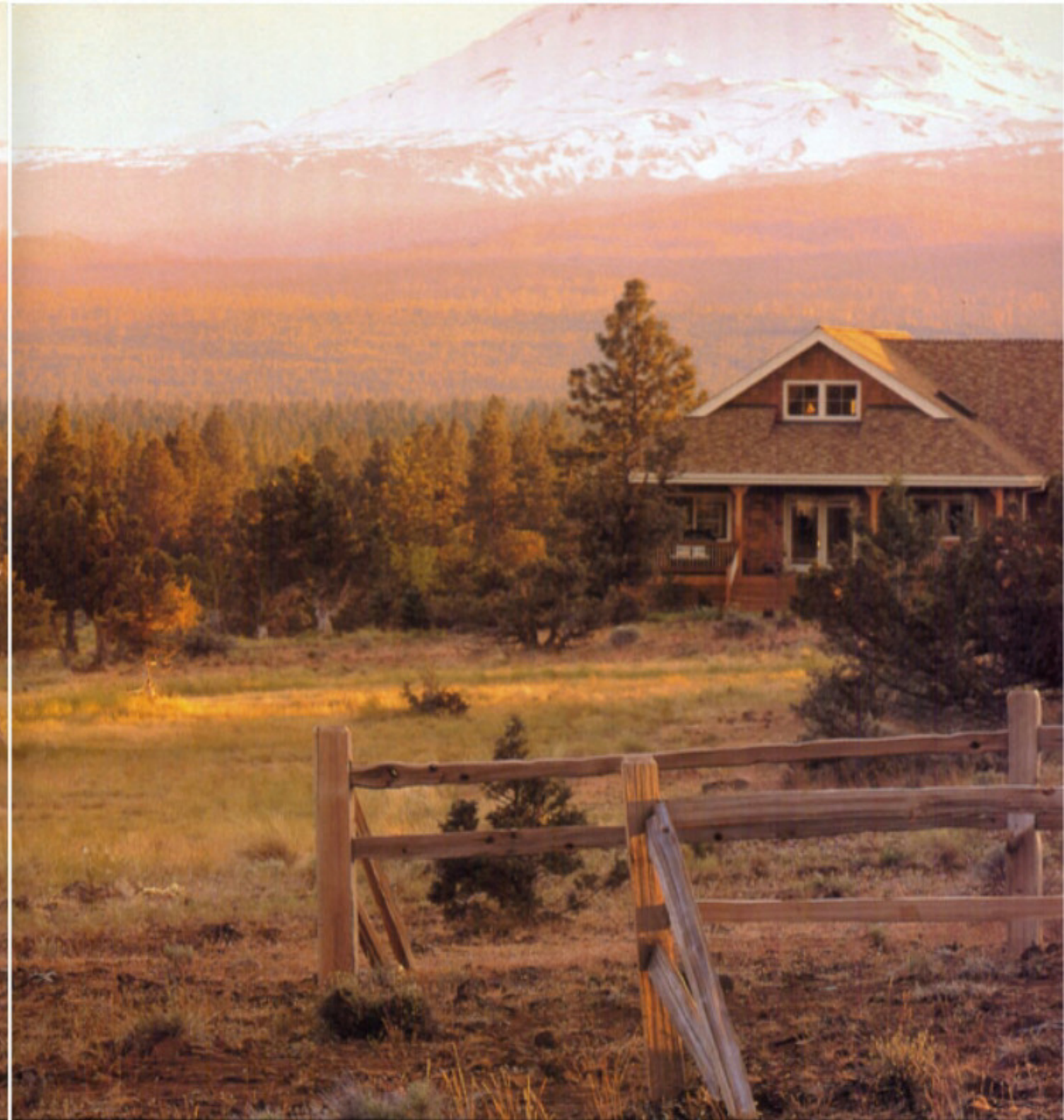
in government motor pools, then of course, wearing a military dress. 1960 was the first year to feature 4-wheel-drive on the Suburban. And from 1967 all Carryalls had just one side door on the left, but two on the right, allowing rear seat passengers to enter from the curb side only. That has changed as we all know, but what hasn't changed at all is the power, the comfort and the versatility of the Suburban.





Chevrolet Suburban: Size and power that stand alone. Simply fold down the middle row, take out the rear seats and this luxurious 8-seater turns into a spacious workhorse with over 4 cubic meters of cargo space. The 6.5 liter V8 Turbo-Diesel delivers

173 hp/127 kW. Whatever you demand of a car, the Suburban delivers – and its versatility increases with your expectations. Its performance, reliability and maneuverability, combined with the highest level of comfort make the Suburban truly and simply compelling.



Exquisite comfort for 8 passengers.

A better Chevrolet Tahoe. A better Chevrolet Suburban. These are vehicles of undisputed quality, with all the equipment you want and with a comprehensive range of proven comfort and safety features, which combine to create a vehicle that represents very real value for money.

We'll deliver you safely. Every Chevrolet Tahoe and Suburban benefits directly from the vast resources of General Motors and its commitment to every aspect of both passenger and vehicle safety. Your personal security is important to us. For example, all doors are fitted with a steel crossbeam to protect you and your passengers from side impact. Our commitment to safety, in all its aspects, is total.

The vital three As. Airbags, ABS and air-conditioning. These are critical to passenger safety and comfort, so naturally they are all fitted as standard. In our opinion your safety is not an optional extra – it is of paramount importance.

We guarantee quality.

The standard of build quality, technology and equipment is such that every Tahoe and Suburban has a 3-year or 100,000 km guarantee. Plus a 6-year anti-corrosion guarantee.



We believe in true value for money.

We fit as standard what other manufacturers frequently charge extra for. Value for money is not something we just talk about. We deliver it.

We are always supportive. We give you the reassurance of our 24-hour, 365 days a year Roadside Assistance, which operates from service points throughout Europe. We believe that if you buy a Chevrolet Tahoe or Suburban the very least you should expect is 100% commitment.

Now we would like to offer you a little temptation! Every Chevrolet retailer throughout Europe wants to give you the opportunity to experience for yourself the pleasure and excitement of driving a better Chevrolet Tahoe and Suburban.



T A H O E

Technical Specifications

Dimensions and Capacities	K10516 2-Door, 4WD	K10706 4-Door, 4WD
Length (mm)	4787	5057
Width (mm)	1958	1941
Height (mm)	1839	1829
Wheelbase (mm)	2832	2985
Cargo Area Volume (l) - behind rear seat	1461	1894
Cargo Area Volume (l) - behind front seat	2815	3347
Fuel Tank (l)	114	114
GVMR (kg) 5.7 l V8	-	3084
GVMR (kg) 6.5 l V8 Diesel	2926	-
Max. Gross Trailer Weight (kg) 5.7 l V8	-	2948
Max. Gross Trailer Weight (kg) 6.5 l V8 Diesel	3175	-

Engine and Transmission	K10516 2-Door, 4WD	K10706 4-Door, 4WD
Engine	6.5 l V8 Turbo-D	5.7 l V8
Engine Block	Cast Iron/Cast Iron	Cast Iron
Cylinder Heads	Cast Iron/Cast Iron	Cast Iron
Bore x Stroke (mm)	103 x 97.03	101.6 x 88.39
Displacement (cm ³)	6468	5733
Compression Ratio	21.5:1	9.4:1
Fuel Feed	Indirect Fuel Injection	Sequential Fuel Injection
Fuel Type	Diesel	Unleaded
Performance (kW/hp/rpm)	134/182/3400	187/254/4400
Max. Torque (Nm/rpm)	488/1800	447/2800
Drive System	4WD	4WD
Transmission	4 speed Automatic	4 speed Automatic
Transfer Case	Autotrac electronic transfer case with 2H/4H/4L/AWD	Autotrac electronic transfer case with 2H/4H/4L/AWD
Axle Ratio, Rear/Front (only 4WD)	3.42/3.73	3.08/3.42/3.73
Top Speed (km/h)	160	160
Fuel Consumption ECE Standard (l/100 km urban/ex-urban/mixed)	20.7/13.1/15.9	20.7/13.1/15.9
CO ₂ Emissions (g/km)	375	375

Chassis/Suspension	K10516 2-Door, 4WD	K10706 4-Door, 4WD
Front Suspension	Independent, Coil Springs, (4WD: Torsion Bars), Stabilizer Bar	Independent, Coil Springs, (4WD: Torsion Bars), Stabilizer Bar
Rear Suspension	Semi-Elliptic 2-Stage Multi-Leaf Springs	Semi-Elliptic 2-Stage Multi-Leaf Springs
Steering Type	Integral Power, Speed-Sensitive, Variable Ratio	Integral Power, Speed-Sensitive, Variable Ratio
Turning Circle, wall-to-wall (m)	11.89	12.41
Wheels (Standard)	6.5 x 16	6.5 x 16
Tires (Standard)	P245/75R16	P245/75R16
Brake System, front/rear	Disc/Drum, ABS	Disc/Drum, ABS

	LS K10516 2DR 6.5 l Auto. Cloth	LT K10516 2DR 6.5 l Auto. Leather	LT LN1 K10516 2DR 6.5 l Auto. Cloth	LS K10706 4DR 5.7 l Auto. Cloth	LT K10706 4DR 5.7 l Auto. Cloth	LT ZN1 K10706 4DR 5.7 l Auto. Cloth
6.5 l V8 Turbo-D 4 speed automatic transmission with overdrive, rear axle ratio 3.42, GVWR 2926 kg and LT245/75R-16E all season blackwall tires	●	●	●	-	-	-
5.7 l V8 4 speed automatic transmission with overdrive, rear axle ratio 3.42, GVWR 3084kg and P245/75R-16 all terrain blackwall tires	-	-	-	●	●	●

Standard Equipment Safety	LS K10516 2DR	LT K10516 2DR	LT LN1 K10516 2DR	LS K10706 4DR	LT K10706 4DR	LT ZN1 K10706 4DR
Airbag, Driver and Front Passenger	●	●	●	●	●	●
Air-conditioning	●	●	●	●	●	●
Child-Proof Security Lock, Rear Side Doors	●	●	●	●	●	●
Side Impact Protection Beams	●	●	●	●	●	●
4 Wheel Anti-Lock Brake System (ABS)	●	●	●	●	●	●

Standard Equipment Interior	LS K10516 2DR	LT K10516 2DR	LT LN1 K10516 2DR	LS K10706 4DR	LT K10706 4DR	LT ZN1 K10706 4DR
AM/FM Stereo Radio, Seek/Scan, Clock, Fixed Mast Antenna, 4 Speakers	●	●	●	●	●	●
Analog Gauges (Speedometer, Trip Odometer, Fuel Level, Voltmeter, Temperature, Oil Pressure, Tachometer)	●	●	●	●	●	●
Cargo Cover	●	●	●	●	●	●
Electrochromic Inside Rearview Mirror	●	●	●	●	●	●
Leather Wrapped Sport Steering Wheel	●	●	●	●	●	●
Power Door Locks	●	●	●	●	●	●
Removable Rear Area Cargo Net	●	●	●	●	●	●

Standard Equipment Exterior	LS K10516 2DR	LT K10516 2DR	LT LN1 K10516 2DR	LS K10706 4DR	LT K10706 4DR	LT ZN1 K10706 4DR
Aluminum Wheels	●	●	●	●	●	●
Power Outside Rearview Mirrors	●	●	-	●	●	-
Roof Rack	●	●	●	●	●	●

Optional Equipment	LS K10516 2DR	LT K10516 2DR	LT LN1 K10516 2DR	LS K10706 4DR	LT K10706 4DR	LT ZN1 K10706 4DR
Split front bench seats cloth	○	○	-	○	-	-
Split front bench seats leather	-	-	-	-	○	-
Front Bucket seats cloth	●	●	●	●	●	●
Front Bucket seats Leather	-	-	●	-	-	●
6 Way Driver Power seat adjuster	●	-	●	●	●	●
6 Way Passenger Power seat adjuster	-	-	-	-	-	●
Heavy Duty Chassis: Front/rear 46mm Blisten high pressure gas shocks skid plates: off road	○	-	●	-	-	●
Outside dual mirrors, electric remote control heated light sensitive	-	-	●	-	-	●
Heated Seats: Driver and Passenger	-	-	●	-	-	●
Generator	-	-	●	-	-	●
Air conditioning, Rear	-	-	-	-	-	●
Lift glass, drop gate, inc. rear window wash wipe	-	○	-	○	○	○
Deep tinted glass	●	●	●	●	●	●
Running Boards, side step: black	○	○	○	●	●	●
Skid plates: off road	-	-	-	○	●	●
Limited slip differential, rear axle	●	●	●	●	●	●
Air Cleaner: high capacity	-	-	-	●	●	●
Cooling system extra capacity: Engine oil	-	-	-	●	●	●
Cooling system extra capacity: transmission	-	-	-	●	●	●
Wheel opening fender flare	●	●	●	-	-	-
Two tone paint	○	○	○	○	○	○

Exterior Colors	Interior Trims	Blue (Vinyl, Cloth, Leather)	Neutral (Vinyl, Cloth, Leather)	Red (Vinyl, Cloth, Leather)
	Grey (Vinyl, Cloth, Leather) 130/132	Blue (Vinyl, Cloth, Leather) 260/262	Neutral (Vinyl, Cloth, Leather) 520/522	Red (Vinyl, Cloth, Leather) 790/792
11U Light Pewter Metallic (new)	●	●	-	●
39U Indigo Blue Metallic	●	●	●	-
41U Onyx Black	●	-	●	●
43U Emerald Green Metallic	●	-	●	-
50U Summit White	●	●	●	●
51U Dark Carmine Red Metallic (new)	●	-	●	●
65U Medium Beige Mystique Metallic	●	-	●	-
69U Copper Metallic (new)	●	-	●	-
74U Victory Red	●	-	●	●

Please see your dealer for available 2-tone body color combinations

● = Standard Equipment ○ = Optional Equipment

All information correct at time of publication. We reserve the right to make changes at any time and without prior warning regarding color, fittings, specifications and models. Technical specifications are provided by the manufacturer. Further information can be obtained from your dealer.

S U B U R B A N

Technical Specifications

Dimensions and Capacities	C/K 10906 2-/4WD	C/K 20906 2-/4WD
Length (mm)	5588	5588
Width (mm)	1948	1948
Height (mm)	1831	1831
Wheelbase (mm)	3340	3340
Cargo Volume (l) from behind front seat	4233	4233
Fuel Tank (l)	151	151
GVMR (kg) - 5.7 l V8	3084 - 3381	3901
GVMR (kg) - 6.5 l V8 Turbo-D	3493 - 3651	n/a
Max. Gross Trailer Weight (kg) 5.7 l V8	2948 - 2722	3402 - 3175
Max. Gross Trailer Weight (kg) 6.5 l V8 Turbo-D	2495 - 2268	3629 - 3402

Engine and Transmission	C/K 10906 2-/4WD	C/K 20906 2-/4WD
Engine	5.7 l V8	6.5 l V8 Turbo-D
Engine Block	Cast Iron	Cast Iron
Cylinder Heads	Cast Iron	Cast Iron
Bore x Stroke (mm)	101.6 x 88.39	103 x 97
Displacement (cm ³)	5733	6468
Compression Ratio	9.4:1	20.2:1
Fuel Feed	Sequential Fuel Injection	Indirect Fuel Injection, Electronic, with Turbocharger
Fuel Type	Unleaded	Diesel
Performance (kW/hp/rpm)	187/254/4400	142/190/3400
NET Torque (Nm/rpm)	447/2800	522/1800
Drive System	2-/4-Wheel Drive	2-/4-Wheel Drive
Transmission	4-Speed Automatic	4-Speed Automatic
Transfer Case	Autotrac electronic transfer case with 2H/4H/4L/AWD	Autotrac electronic transfer case with 2H/4H/4L/AWD
Top Speed (km/h)	160	160
Fuel Consumption ECE Standard (l/100 km urban/ex-urban/mixed)	20.7/13.1/15.9	n/a
CO ₂ emissions (g/km)	375	n/a

Chassis/Suspension	C/K 10906 2-/4WD	C/K 20906 2-/4WD
Front Suspension	Independent, 2WD Coil Springs, (4WD: Torsion Bars), Stabilizer Bar	Independent, 2WD Coil Springs, (4WD: Torsion Bars), Stabilizer Bar
Rear Suspension	Semi-Elliptic 2-Stage Multi-Leaf Springs	Semi-Elliptic 2-Stage Multi-Leaf Springs
Steering Type	Integral Power, Speed-Sensitive, Variable Ratio	Integral Power, Speed-Sensitive, Variable Ratio
Turning Circle, wall-to-wall (m) 2WD/4WD	2WD: 14.67/4WD: 15.13	2WD: 14.61/4WD: 14.82
Wheels (Standard)	16 x 6.5 (406 mm x 165 mm)	16 x 6.5 (406 mm x 165 mm)
Tires (Standard)	P245/75R16	LT245/75R16
Brakes System, front/rear	Disc/Drum, ABS	Disc/Drum, ABS

	LS C/K 10906 5.7 l Auto Cloth	LT C/K 10906 5.7 l Auto Leather	LT ZN1 C/K 10906 5.7 l Auto Leather	LS C/K 20906 6.5 l Auto Cloth	LT C/K 20906 6.5 l Auto Leather	LT ZN1 C/K 20906 6.5 l Auto Leather
5.7 l V8 4 speed automatic transmission with overdrive, rear Axle ratio 3.42, GVWR 3311kg and P245/75R16 all terrain blackwall tires	●	●	●	-	-	-
6.5 l V8 Turbo-D 4 speed automatic transmission with overdrive, rear Axle ratio 3.42, GVWR 3651kg and LT245/75R16 all season blackwall tires	-	-	-	●	●	●

Standard Equipment Safety	LS C/K 10906 5.7 l Auto Cloth	LT C/K 10906 5.7 l Auto Leather	LT ZN1 C/K 10906 5.7 l Auto Leather	LS C/K 20906 6.5 l Auto Cloth	LT C/K 20906 6.5 l Auto Leather	LT ZN1 C/K 20906 6.5 l Auto Leather
Airbag, Driver and Front Passenger	●	●	●	●	●	●
Front Air-conditioning	●	●	●	●	●	●
Side Impact Protection Beams	●	●	●	●	●	●
4 Wheel Anti-Lock Brakes (ABS)	●	●	●	●	●	●

Standard Equipment Interior	LS C/K 10906 5.7 l Auto Cloth	LT C/K 10906 5.7 l Auto Leather	LT ZN1 C/K 10906 5.7 l Auto Leather	LS C/K 20906 6.5 l Auto Cloth	LT C/K 20906 6.5 l Auto Leather	LT ZN1 C/K 20906 6.5 l Auto Leather
AM/FM Stereo Radio, Seek/Scan, Clock, Fixed Mast Antenna	●	●	●	●	●	●
Adjustable Headrests, All Outboard Seats	●	●	●	●	●	●
Analog Gauges (Speedometer, Trip Odometer, Fuel Level, Voltmeter, Temperature, Oil Pressure, Tachometer)	●	●	●	●	●	●
Cruise Control	●	●	●	●	●	●
Electrochromic Inside Rearview Mirror	●	●	●	●	●	●
Leather Wrapped Sport Steering Wheel	●	●	●	●	●	●
Power Door Locks	●	●	●	●	●	●
Power Windows	●	●	●	●	●	●
Removable Rear Area Cargo Net	●	●	●	●	●	●
Tilt Steering Wheel	●	●	●	●	●	●
6 Way Driver Power seat adjuster	●	●	●	●	●	●

Standard Equipment Exterior	LS C/K 10906 5.7 l Auto Cloth	LT C/K 10906 5.7 l Auto Leather	LT ZN1 C/K 10906 5.7 l Auto Leather	LS C/K 20906 6.5 l Auto Cloth	LT C/K 20906 6.5 l Auto Leather	LT ZN1 C/K 20906 6.5 l Auto Leather
Cast Aluminum Wheels (5.7 l only)	●	●	●	-	-	-
Cast Steel Wheels (6.5TD only)	-	-	-	●	●	●
Power Outside Rearview Mirrors	●	●	●	●	●	●
Moldings: Wheel opening fender flare	●	●	●	●	●	●
Roof Rack	●	●	●	●	●	●
Underbody Shield Package (4WD only)	●	●	●	●	●	●

Optional Equipment	LS C/K 10906 5.7 l Auto Cloth	LT C/K 10906 5.7 l Auto Leather	LT ZN1 C/K 10906 5.7 l Auto Leather	LS C/K 20906 6.5 l Auto Cloth	LT C/K 20906 6.5 l Auto Leather	LT ZN1 C/K 20906 6.5 l Auto Leather
Split Front Bench - Cloth	○	-	-	○	-	-
Split Front Bench - Leather	-	○	●	-	○	-
Split-Folding 3 Passenger Center Bench with Fold-Down Center Armrest - Cloth	●	-	-	●	-	-
Split-Folding 3 Passenger Center Bench with Fold-Down Center Armrest - Leather	-	●	●	-	●	●
Front Bucket seats Cloth	●	-	-	●	-	-
Front Bucket seats Leather	-	●	●	-	●	●
Seat, rear: delete	○	○	○	○	○	○
6 Way Passenger Power seat adjuster	-	-	●	-	-	●
Air conditioning, Rear	-	-	●	○	○	●
Outside dual mirrors, electric remote control heated light sensitive	-	-	●	-	-	●
46 mm Bilsten high pressure gas shocks	-	-	●	-	-	●
Heated Seats: Driver and Passenger	-	-	●	-	-	●
Generator	-	-	●	-	-	●
Deep Tinted glass	●	●	●	●	●	●
Running Boards, side step: black	○	○	●	○	○	○
Skid plates: off road	○	○	●	○	○	-
Limited slip differential, rear axle	●	●	●	●	●	●
Air Cleaner: high capacity	○	○	●	-	-	●
Two tone paint	○	○	○	○	○	○

Exterior Colors	Interior Trims			
	Gray (Vinyl, Cloth, Leather) 130/132	Blue (Vinyl, Cloth, Leather) 260/262	Neutral (Vinyl, Cloth, Leather) 520/522	Red (Vinyl, Cloth, Leather) 790/792
11U Light Pewter Metallic (new)	●	●	-	●
39U Indigo Blue Metallic	●	●	●	-
41U Onyx Black	●	-	●	●
43U Emerald Green Metallic	●	-	●	-
50U Summit White	●	●	●	●
51U Dark Carmine Red Metallic (new)	●	-	●	●
65U Medium Beige Mystique Metallic	●	-	●	-
69U Copper Metallic (new)	●	-	●	-
74U Victory Red	●	-	●	●

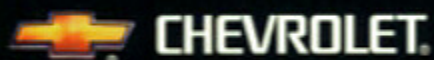
Please see your dealer for available 2-tone body color combinations

● = Standard Equipment ○ = Optional Equipment

All information correct at time of publication. We reserve the right to make changes at any time and without prior warning regarding color, fittings, specifications and models. Technical specifications are provided by the manufacturer. Further information can be obtained from your dealer.



Because we understand that resources are finite, we are dedicated to the protection of the global environment and natural resources at every stage of the production lifecycle.



For further information, please contact your Chevrolet retailer