

SONATA

2021



A bit about us.

With Hyundai, you can really have it all.

Our company believes in pushing the boundaries and challenging conventional thinking. Our very name, “Hyundai”, stands for modernity in the Korean language and it is this one word that helps represent everything we stand for. We don’t approach vehicle development in a traditional way. Our company is structured differently. We think differently. We find the modern way. It’s our mission to offer top quality, feature-rich vehicles at an affordable price.

We offer elite quality through meticulous design and painstaking craftsmanship. Our three design centres in Korea, the U.S. and Europe compete against each other to bring you cutting-edge designs — designs that not only look stunning but are also aerodynamic and fuel efficient.

We are the only global automaker to manufacture our own Advanced High-Strength Steel because, simply put, we just weren’t satisfied with what was available.

We test our vehicles in areas like the Arctic, our proving grounds in the Mojave Desert and on Germany’s world-famous Nürburgring circuit to deliver the durability and reliability you demand. And not only do we package our vehicles with advanced safety and technology, we back all our vehicles with one of the best automotive warranties in the industry. This means you really can have it all, quality and value together.



Sonata SUPERSTRUCTURE™ shown,
made with our Advanced High-Strength Steel.

Fashionably smart.

The 2021 Sonata embraces the aggressive curves and sharp lines of a 4-door coupe while delivering a sleek and modern cabin designed around your every need. Surround yourself with advanced technology like the available 12.3" full digital instrument cluster and a suite of standard and available Hyundai SmartSense™ safety features.

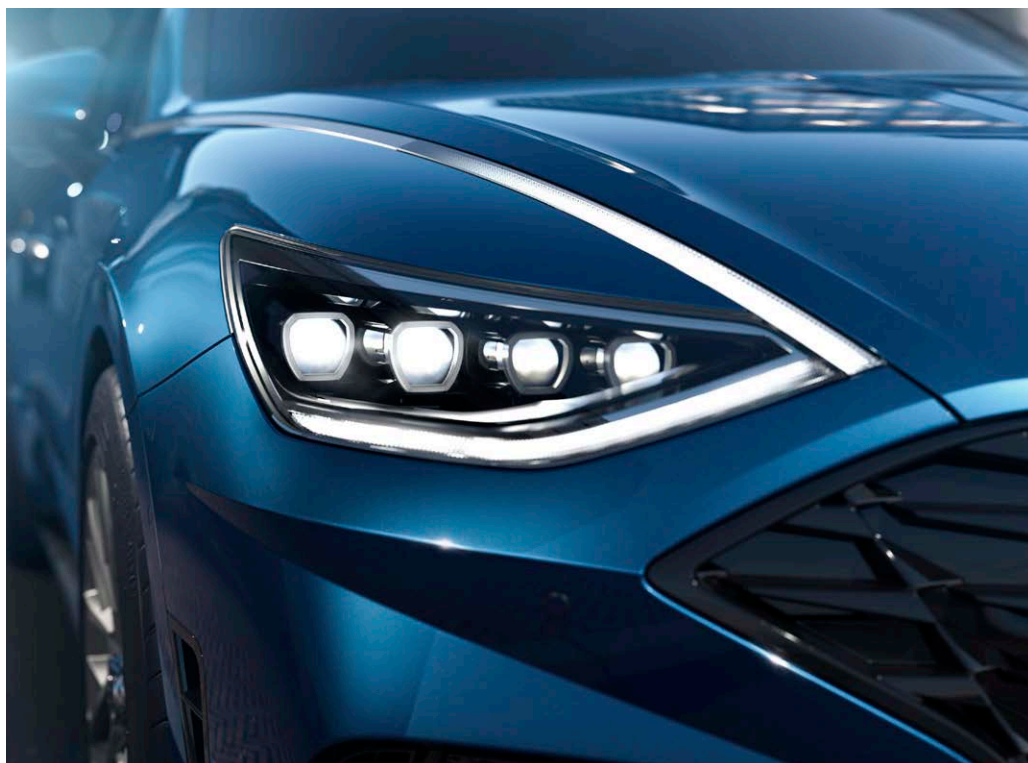
Drive fashionably and drive smart with the Sonata.



Exterior excellence.

Our engineers created an unmistakable lighting signature unique to the Sonata that incorporates the very latest in lighting technology. Formed to the Sonata's body, the hidden LED daytime running lights appear chrome when turned off, and then dramatically brighten when turned on. The wide, horizontal LED tail lights at the rear connect to the brake lights on each side, creating a striking visual design at night.

Elevated athletic aesthetics paired with 1.6L Turbo models include sport-designed front and rear bumpers, a glossy black mesh front grille and a chrome twin-tip exhaust outlet.



Standard hidden LED daytime running lights



Available 19" alloy wheels
Available premium full LED tail lights



Make yourself comfortable.

Sink into the available plush leather seats and stretch out in the spacious cabin. Setting the bar high in all that it does, the Sonata not only offers available dual-zone automatic climate control for added convenience for the driver and front passenger — this advanced system also allows you to choose between three levels of airflow intensity while the automated system is set, improving overall comfort.

You can also make yourself comfortable with available ventilated front seats to help you escape the heat on hot summer days, all while soaking in the sunshine with the available panoramic sunroof that spans above the cabin.



Standard heated front seats



Available heated rear seats



Available ventilated front seats



Standard leather-wrapped heated steering wheel



Available 8-way power-adjustable driver's seat with lumbar support



Available dual-zone automatic climate control



Ultimate model shown.
May not be exactly as shown.

Driver intuitive technology.

The 2021 Sonata undoubtedly makes every drive an exceptional one.

Step inside and access available personalized profile settings for up to three drivers for ultimate convenience. The technology will keep settings for the driver seat and side mirror positions, multimedia, drive mode, Head-Up Display settings and more, all stored and accessible at the press of a button.



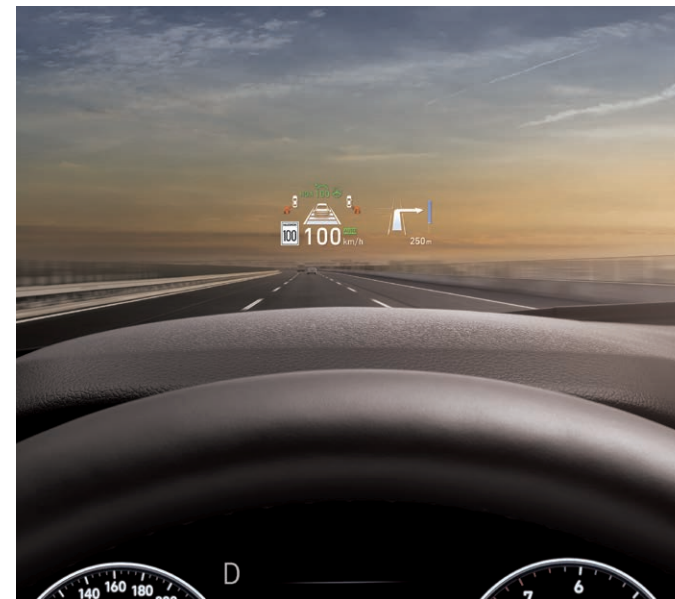
Available Remote Smart Parking Assist

The Sonata features the segment-exclusive Remote Smart Parking Assist system¹. This driver assistance technology allows you to remotely move the Sonata when you are outside of the vehicle, a convenient feature when you have passengers or if you have luggage to load in a tight area. Simply use the key fob to move the Sonata forward or backward, into or out of the parking space.



Available 12.3" full digital instrument cluster with Blind View Monitor

Front and centre is the available 12.3" full digital instrument cluster with a confidence-inspiring Blind View Monitor². It provides you with added perspective on the road by streaming a live video of your blind spot when your turn indicator is on.



Available Head-Up Display

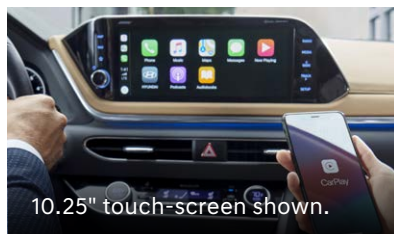
With the available Head-Up Display, you can keep your attention focused on the road with key information like your speed, the speed limit, notification of whether there is a vehicle in either of your blind spots and navigation commands, all projected within your line of sight.

Connectivity at your fingertips.

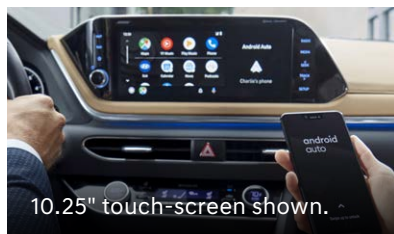
Make the most of your drive with seamless connectivity offered by Apple CarPlay™ and Android Auto™. The available high-definition 10.25" touch-screen display offers intuitive smartphone mirroring to access your favourite apps, as well as multiple viewpoints with the 360-degree Surround View Monitor for ease in tight spaces. An available Bose® premium 12-speaker sound system provides the ultimate immersive experience for your favourite music.



Available 10.25" touch-screen display with Surround View Monitor and navigation system



10.25" touch-screen shown.



10.25" touch-screen shown.

Standard Apple CarPlay™ and Android Auto™ with available wireless connectivity.

Standard Apple CarPlay™ and Android Auto™ smartphone connectivity let you access your favourite mobile apps — music, maps, messages and more — seamlessly and safely through voice commands and the touch-screen display. Preferred, Sport and Luxury models feature convenient wireless connection, no cable required.



Standard 8.0" touch-screen display
Available Bose® premium audio with
12 speakers



Available interior ambient lighting
Available wireless charging pad▼

Hyundai SmartSense™

Our suite of available Hyundai SmartSense™ safety features includes a range of camera, radar and motion detection technologies to provide you with added peace of mind. The 2021 Sonata features some of the latest innovative safety technologies in the industry, including available Highway Driving Assist with Highway Auto Curve Slowdown³. When actively engaged with both Adaptive Cruise Control with traffic stop and go and Lane Following Assist, this semi-autonomous driving technology helps keep you centred in your lane and travelling at a safe distance behind the vehicle ahead, can help ensure you drive at the specified speed limit and can also automatically slow down the speed of the vehicle before entering a highway curve section for extra safety.

Standard features:



Forward Collision-Avoidance Assist with Pedestrian, Cyclist and Junction-Turning Detection



Blind-Spot Collision-Avoidance Assist



Rear Cross-Traffic Collision-Avoidance Assist



Lane Following Assist



Lane Departure Warning with Lane Keeping Assist



High Beam Assist



Safe Exit Warning



Rear Occupant Alert

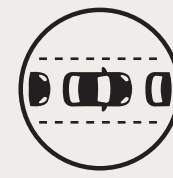


Driver Attention Warning



Adaptive Cruise Control with traffic stop and go

Available features:



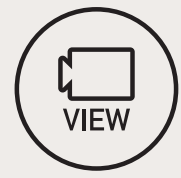
Highway Driving Assist with Highway Auto Curve Slowdown



Blind View Monitor



Parking Collision-Avoidance Assist - Reverse



Surround View Monitor

Ultimate convenience. Ultimate connectivity.

Bluelink[®] is our connected vehicle system that is available throughout our vehicle lineup. The advanced system conveniently keeps you connected with your Hyundai via the smartphone app, and offers a suite of services at the press of a button. Visit hyundaicanada.com/bluelink or see your dealer for more information on the complete list of innovative features that Bluelink[®] puts at your fingertips.



Remote heated front seats

When equipped with Bluelink[®], the 2021 Sonata also features remote access from your smartphone to turn on the heated front seats — perfect for cold winter mornings.



Remote start with climate control



SOS emergency and roadside assistance



Automatic collision notification



Remote lock/unlock



Find my car



Local search



Real-time diagnostics



Find a dealer



Complimentary 3-year subscription on equipped models



Find the SONATA that is right for you.

Preferred 2.5L

Standard equipment includes:

Performance features:

- 2.5L Smartstream GDI + MPI 4-cylinder engine
- 8-speed automatic transmission
- Button-type shift-by-wire gear selector
- 17" alloy wheels with P215/55R17 tires
- Drive Mode Select
- Temporary compact spare tire

Exterior features:

- LED headlights
- LED tail lights
- LED daytime running lights
- LED integrated side mirror turn signal repeaters
- Automatic headlights
- Acoustically laminated windshield
- Solar control glass
- Aero wiper blades
- Heated, power-adjustable side mirrors
- Body-coloured side mirrors
- Glossy black side sill mouldings and skid plates

Interior features:

- 8.0" touch-screen display with wireless Apple CarPlay™ and Android Auto™
- AM/FM/MP3 audio system with 6 speakers
- Bluetooth® hands-free phone system
- Rear USB charging port
- USB/auxiliary connectivity
- Proximity keyless entry with push-button ignition and remote engine start
- Heated steering wheel
- Leather-wrapped steering wheel
- Heated front seats
- Premium cloth seating surfaces
- 60/40 split-folding rear seats
- Air conditioning
- Power door locks
- Power windows with driver's auto-up/down and pinch protection
- Door armrest, artificial leather-wrapped
- Sliding sunvisor with illuminated vanity mirrors

Safety features:

- Forward Collision-Avoidance Assist with Pedestrian, Cyclist and Junction-Turning Detection
- Lane Following Assist
- Lane Departure Warning with Lane Keeping Assist
- Blind-Spot Collision-Avoidance Assist
- Rear Cross-Traffic Collision-Avoidance Assist
- Safe Exit Warning
- High Beam Assist
- Driver Attention Warning
- Rear Occupant Alert
- Adaptive Cruise Control with traffic stop and go
- Electronic Parking Brake with Automatic Vehicle Hold
- Rearview camera
- Tire Pressure Monitoring System
- Airbags (9) – driver's knee (1), front impact (2), front seat-mounted side impact (2), rear passenger side impact (2), front/rear side impact curtains (2)

Sport 1.6T

Includes Preferred 2.5L equipment plus:

Performance features:

- 1.6L Smartstream Turbocharged GDI 4-cylinder engine
- Steering wheel-mounted paddle shifters

Exterior features:

- Panoramic sunroof
- Premium full LED tail lights
- Sport front bumper fascia
- Sport front grille, glossy black mesh-type
- Sport rear bumper and diffuser
- Chrome twin-tip exhaust

Interior features:

- Bluelink® connected vehicle system
- AM/FM/SiriusXM™/MP3 audio system with 6 speakers
- Bluetooth® hands-free phone system with voice recognition
- 8-way power-adjustable driver's seat with lumbar support
- Dual-zone automatic climate control
- Auto-defogging windshield system
- LED interior illuminations
- Door centre trim inserts, artificial leather-wrapped
- Liquid chrome interior accents
- Power windows with front auto-up/down and pinch protection
- Rear-seat head restraints, height-adjustable (outboard seats only)

Exclusive Sport 1.6T features:

- 19" alloy wheels with P245/40R19 tires
- Leatherette/suede (Dinamica®) sport seats with red accents
- Aluminum sport pedals
- Dark grey cloth headliner
- Glossy black side mirrors
- Glossy black windshield and door frame mouldings

Luxury 1.6T

Includes Sport 1.6T equipment plus:
(excluding exclusive Sport 1.6T features)

Performance features:

- 18" alloy wheels with P235/45R18 tires

Interior features:

- Bose® AM/FM/SiriusXM™/MP3 premium audio system with 12 speakers
- Driver's Integrated Memory System for seat and side mirror positions
- Ventilated front seats
- Heated rear seats
- Leather seating surfaces
- 6-way power-adjustable front passenger seat
- 4.2" colour LCD cluster display
- Electrochromic auto-dimming rearview mirror with integrated HomeLink® transceiver
- Second-row air vents (mounted in centre console)

Safety features:

- Surround View Monitor

Ultimate 1.6T

Includes Luxury 1.6T standard equipment plus:

Exterior features:

- Remote Smart Parking Assist
- Premium projector LED headlights
- Rain-sensing windshield wipers

Interior features:

- 10.25" colour touch-screen with Apple CarPlay™ and Android Auto™, and navigation system
- 12.3" full digital display instrument cluster
- Head-Up Display
- Wireless charging pad
- Interior ambient lighting
- Personalized user profile settings (primary, secondary and guest)
- Dark grey cloth headliner (with camel-tone leather interior only)
- Crash pad, artificial leather-wrapped with stitching
- Door armrest, artificial leather-wrapped with stitching
- Door centre trim inserts, artificial leather-wrapped with stitching

Safety features:

- Blind View Monitor
- Highway Driving Assist with Highway Auto Curve Slowdown
- Parking Collision-Avoidance Assist – Reverse

Standard
2.5L Smartstream GDI

191 **181**
horsepower lb-ft torque

Available
1.6L Turbocharged
Smartstream GDI

180 **195**
horsepower lb-ft torque

The standard 2.5L Smartstream 4-cylinder engine delivers 191 horsepower and 181 lb-ft of torque, providing excellent mid-range power for easy drivability.

If you're looking for sportier performance, choose the available Turbocharged 1.6L Smartstream 4-cylinder engine, which delivers 180 horsepower and produces 195 lb-ft of torque at a low 1,500 rpm for enhanced acceleration and response.

Both engines are mated to a smooth-shifting 8-speed automatic transmission with shift-by-wire technology, so you can effortlessly change gears at the press of a button.

Colours and wheels.

Exterior colours*



Quartz White



Twilight Black



Shimmering Silver



Nocturne Grey



Stormy Sea



Flame Red

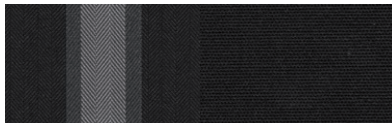


Hampton Grey
Not available on Preferred model



Glowing Yellow
Not available on Preferred model

Interior colours*



Black interior with black cloth seats
Standard on Preferred model



Dark grey interior with sport leatherette/suede seats and red accents
Standard on Sport model



Black interior with black leather seats
Standard on Luxury and Ultimate models



Dark grey and camel two-tone interior with camel-tone leather seats
Available on the Ultimate model (with Quartz White, Twilight Black, Nocturne Grey, Stormy Sea and Flame Red exterior colours only)

Wheels



17" alloy wheel
Standard on Preferred model



18" alloy wheel
Standard on Luxury and Ultimate models



19" alloy wheel
Standard on Sport model

*Exterior and interior colour options and/or availability may change without notice. Choice of interior colour is dependent on model and/or exterior colour selection. Colours shown are for reference only and may vary from the actual hue. Visit hyundaicanada.com or see your dealer for details.

Accessories.



Accessory frame

An accessory frame makes it quick and easy to attach hitch-mounted cargo equipment, such as bikes and ski racks. Frame not intended for towing.



Winter wheel and tire packages

Winter tires have specialized rubber and tread to handle the cold temperatures, resulting in better traction, handling and braking. Mount your tires on a set of Hyundai steel wheels and spare your alloy wheels from the corrosion caused by salt and slush.



Premium all-weather cargo tray

Protect your interior cargo area with style. This durable, custom-fit premium cargo tray protects from spills and messy loads while helping keep your cargo area looking new for years to come.



Premium all-weather floor liners

Premium all-weather floor liners were designed to cover the interior carpet providing maximum protection against the elements that other mats cannot offer. Their unique and durable design features a non-slip surface for added comfort and a long-lasting premium look. Remove carpet mats prior to installation.

5 YEAR	100,000 km Comprehensive Limited Warranty*
5 YEAR	100,000 km Powertrain Warranty
5 YEAR	100,000 km Emission Warranty
5 YEAR	Unlimited km Roadside Assistance Program**

One of the best-backed warranties in Canada.

You will see that a number of our vehicles have received multiple awards from the most reputable third-party organizations, so you can take their word when it comes to the quality of our vehicles. This quality is equally matched by the quality of our warranty. We stand confidently behind our products to give you ultimate peace of mind with a 5-year/100,000 kilometre Comprehensive Limited Warranty[†]. We also provide a 5-year/Unlimited kilometre Roadside Assistance Program^{**} featuring flat tire changing, lockout service and more. Just one toll-free call away, 24 hours a day.

[™][®]The Hyundai name, logos, product names, feature names, images and slogans are trademarks owned or licensed by Hyundai Auto Canada Corp.. Specifications, features, illustrations, accessories, materials and equipment and all other information shown in this brochure are based on the latest information available at the time of publication. Although descriptions are believed to be correct, accuracy cannot be guaranteed. Hyundai Auto Canada Corp. reserves the right to make any changes or modifications at any time, without notice or obligation, including, without limitation, in colour, specifications, features, accessories, materials, equipment and models. Some vehicles are shown with optional equipment. All Hyundai warranties have no deductible. [†]Hyundai's Comprehensive Limited Warranty coverage covers most vehicle components against defects in workmanship under normal use and maintenance conditions. ^{**}Hyundai's 24-Hour Roadside Assistance Program is a limited service and does not cover certain costs or expenses. Roadside Assistance is not a warranty. ⁴Apple CarPlay™ may not be available on all devices and may not be available in all countries or regions. Visit www.apple.com for further details and any applicable limitations. Apple and Apple CarPlay are trademarks of Apple Inc.. ⁵Android Auto™ may not be available on all devices and may not be available in all countries or regions. Visit www.android.com for further details and any applicable limitations. Android and Android Auto are trademarks of Google Inc.. ⁶Vehicle is equipped with the ability to access SiriusXM radio. Does not include subscription. The SiriusXM™ name is a trademark of SiriusXM Satellite Radio Inc.. ⁷Available on select models only. BlueLink® includes 3 years of service without charge. The BlueLink® service is available for new vehicle purchases and leases subject to the BlueLink® subscription terms and conditions. Only use BlueLink® and corresponding devices when safe to do so. Cellular and GPS coverage is required. Features, specifications and fees may vary by model and are subject to change. For more on details and limitations, visit hyundaicanada.com or your authorized Hyundai dealer. ^{††}Not all devices will be compatible. See Owner's Manual for further details. ^{†††}Remote Smart Parking Assist (RSPA) can assist with parking the vehicle. RSPA may not function correctly if one or more of the parking sensors is damaged, dirty or covered or if weather conditions (heavy rain, snow or fog) interfere with sensor operation. RSPA will not assist in parallel parking and can only assist in moving the vehicle in a parking spot forwards and backwards. To operate the RSPA, the operator must be outside of the vehicle but within a range of 12 feet of the vehicle. Always inspect the parking area with your own eyes for any potential hazards, dangers or safety issues. Operator remains responsible to stop the vehicle to avoid a collision or accident. Operator is responsible for ensuring the safe operation of the feature and ensuring that the parking area is free from obstacles, pedestrians, etc. See Owner's Manual for further details and limitations. Claim based on Global Automakers of Canada segmentation for the intermediate segment as of September 2020. ²Blind View Monitor (BVM) assists the driver in changing lanes by providing a live view of the blind spots on either side of the vehicle and an audible alert if another vehicle is detected. Turn signal must be activated and other system limitations apply. Do not rely exclusively on BVM. It is the driver's responsibility to be aware of surroundings and ensure they are clear before changing lanes or directions. See Owner's Manual for more information. ³Highway Driving Assist (HDA), when used in conjunction with Lane Following Assist and Adaptive Cruise Control with traffic stop and go, is for highway use only and can help keep the vehicle centred in its lane while maintaining a safe distance from the vehicle ahead only when the lane markings are clearly visible on the road. It should not be used in poor weather, heavy or varying traffic, or on winding or slippery roads. HDA will not work under all circumstances and will not prevent loss of control. Driver remains responsible to slow or stop the vehicle to avoid a collision. For HDA to maintain the posted speed limit of a highway, the system must be set to the exact speed limit. Only select provincial and territorial highways will apply to this feature of the system. This feature of HDA will only function when the navigation map data is available and is up to date for the highway that is being driven on. Driver remains at all times responsible for determining the correct speed limit and to abide by such speed limits, including in situations in which a speed limit may be altered, but such change in speed limit is not recognized by the navigation system, such as in the cases of reduced speeds in construction zones or where posted speed limits have been recently increased or decreased. Driver is responsible for maintaining the data of the navigation system up-to-date. See Owner's Manual for further details and limitations. When equipped with Highway Auto Curve Slowdown (HACS), HACS will reduce cruise control set speed as vehicle approaches a curve in the highway. HACS will only function when the navigation map data is available for the section of highway that is being driven on. HACS will function at speeds of between 40 and 193 km/h. HACS may not function under all circumstances and on all highways and will not prevent loss of control. Driver remains responsible for controlling the speed of vehicle to avoid a collision or other accidents. See Owner's Manual for further details and limitations. Bluetooth® word mark and logos are registered trademarks owned by Bluetooth SIG, Inc.. HomeLink® is a registered trademark of Johnson Controls Inc.. Bose® is a registered trademark of Bose Corporation. All other trademarks and trade names are those of their respective owners. Some images shown with special graphic effects.

Hyundai Auto Canada Corp.
hyundaicanada.com

