



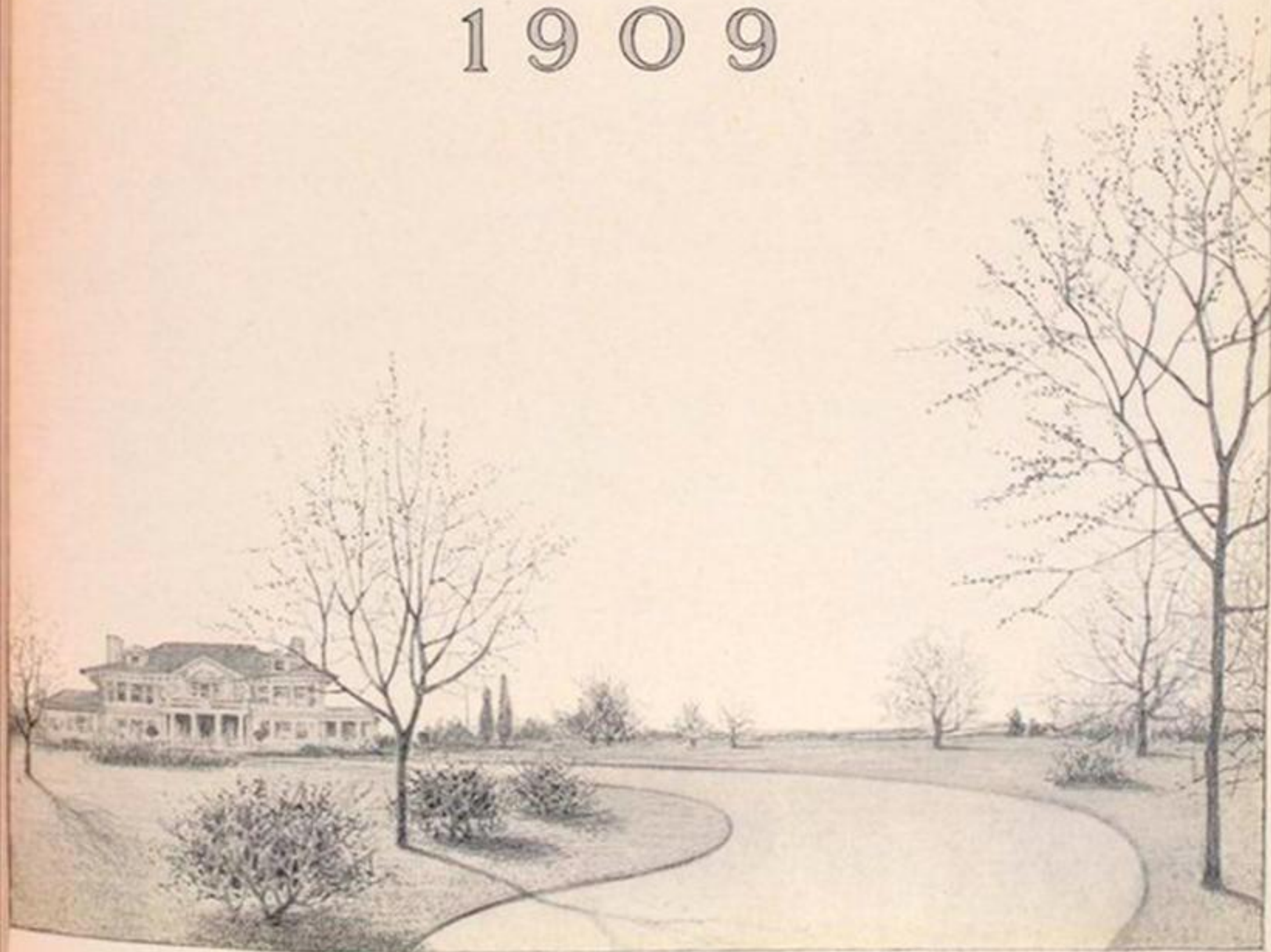
FRANKLIN
1909



FRANKLIN
AUTOMOBILES

"over the roads through-
out the seasons"

1909





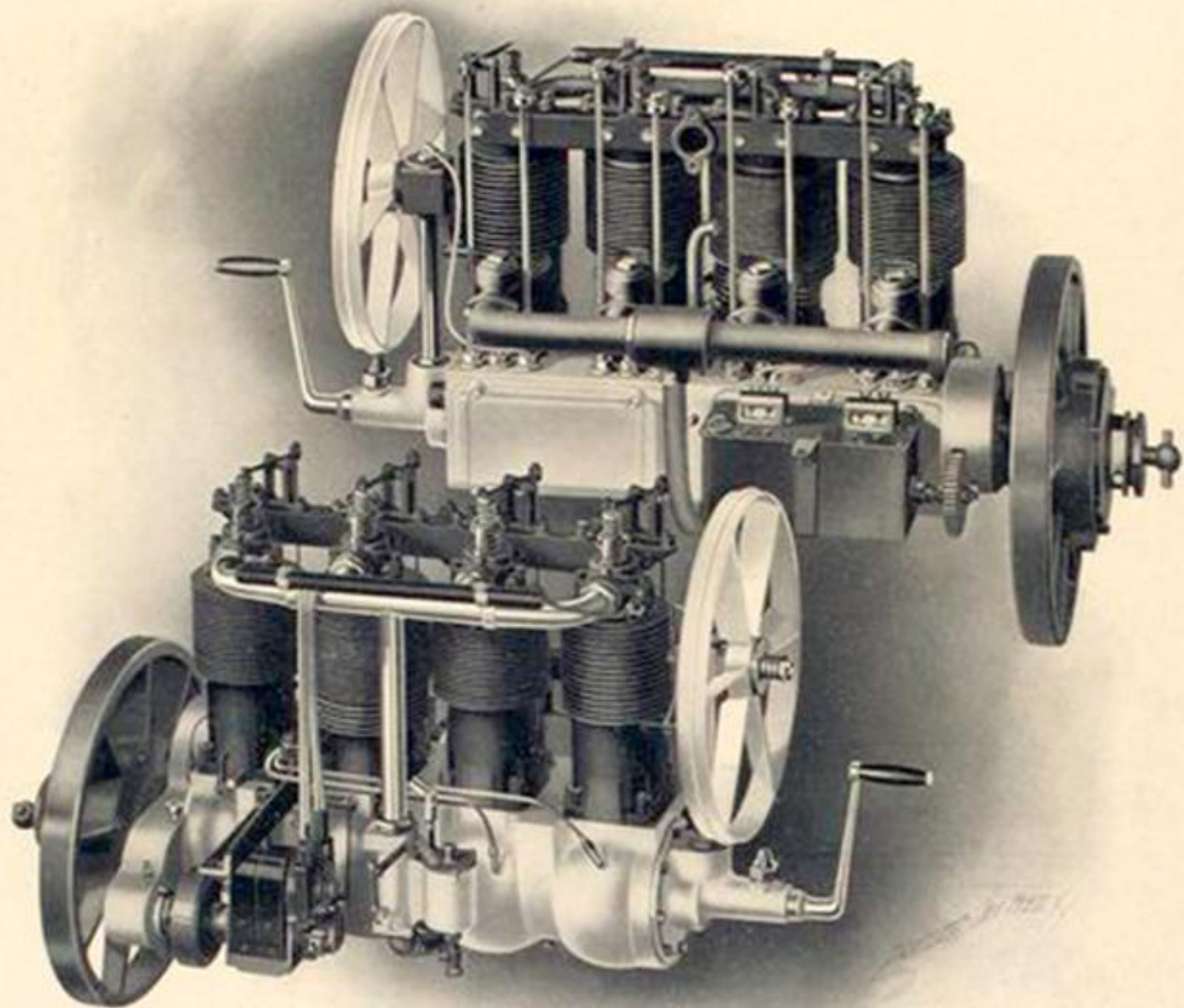


FRANKLIN

TOURING-CARS
RUNABOUTS
CLOSED CARS
FOUR & SIX-CYLINDERS

H H FRANKLIN MANUFACTURING CO
SYRACUSE N Y





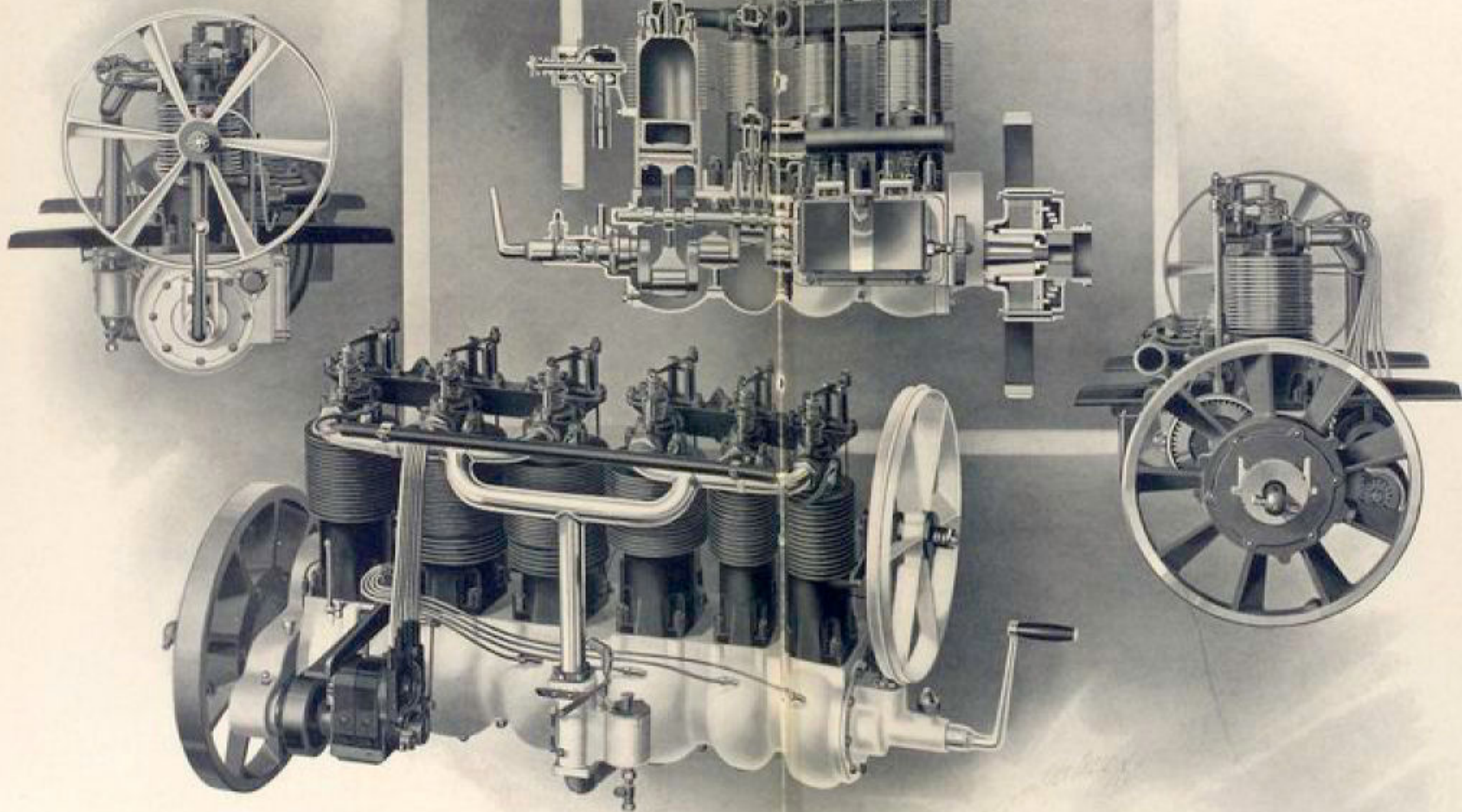
Franklin Four-Cylinder Engine: upper view, Exhaust Side; lower view, Intake Side

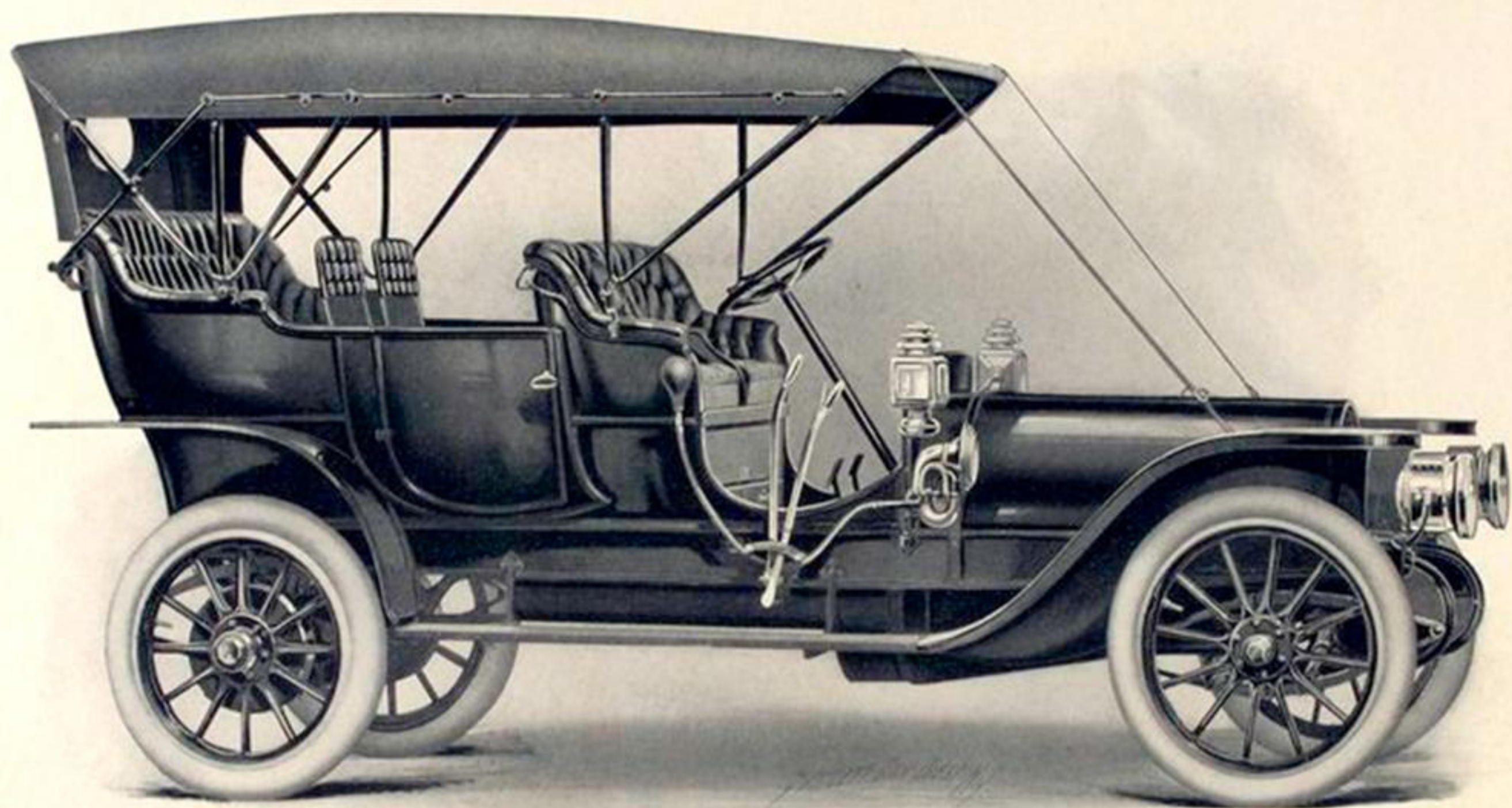




Franklin Four- and Six-Cylinder Engine
complete ; front, section, rear and side views

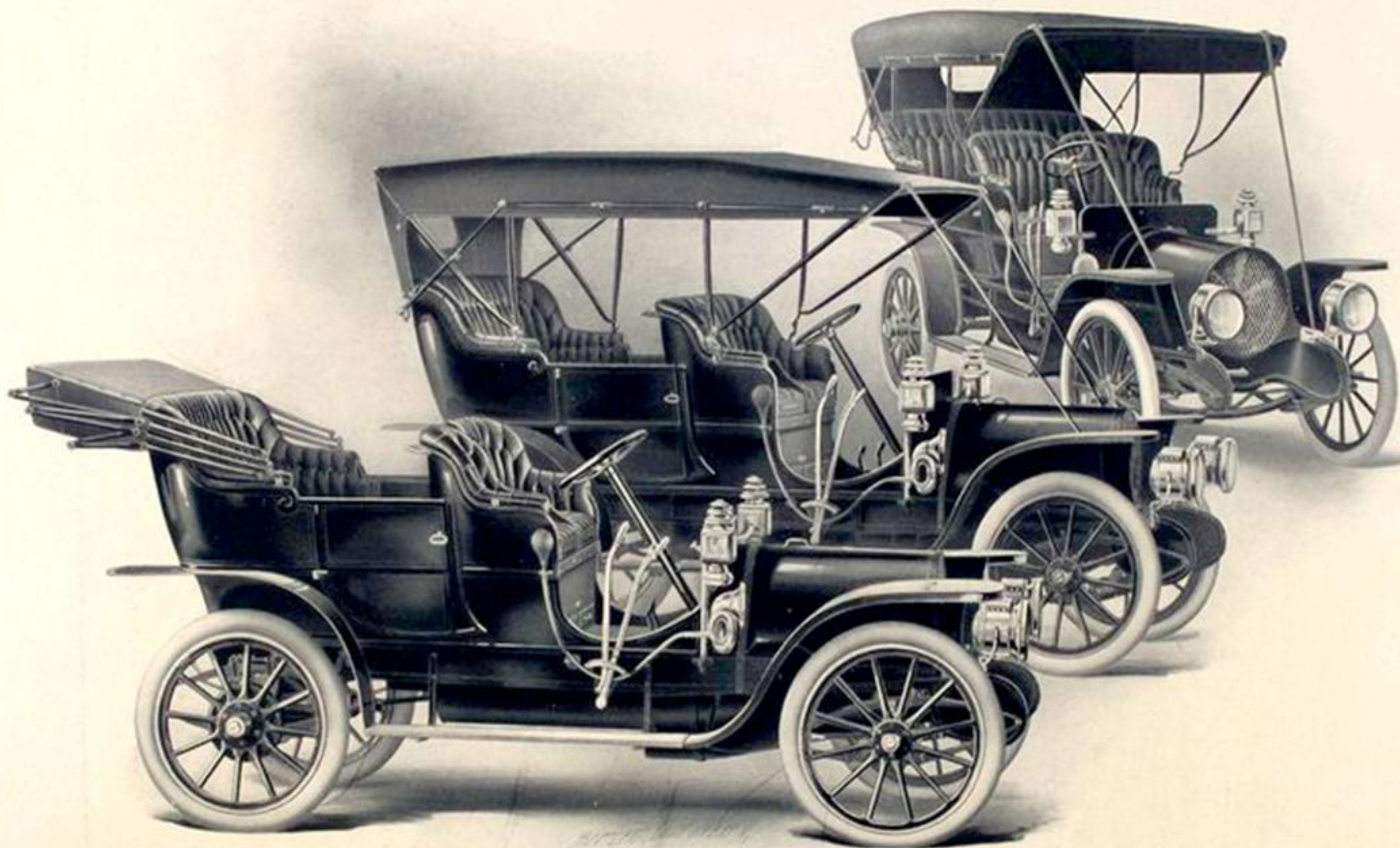
The sectional view shows all working parts. The cylinders are cast singly. Any one cylinder is easily removed. The Franklin engine never had less than four cylinders. It took other American makers a long time to come to the four-cylinder principle. The Franklin was the first successful six-cylinder engine.



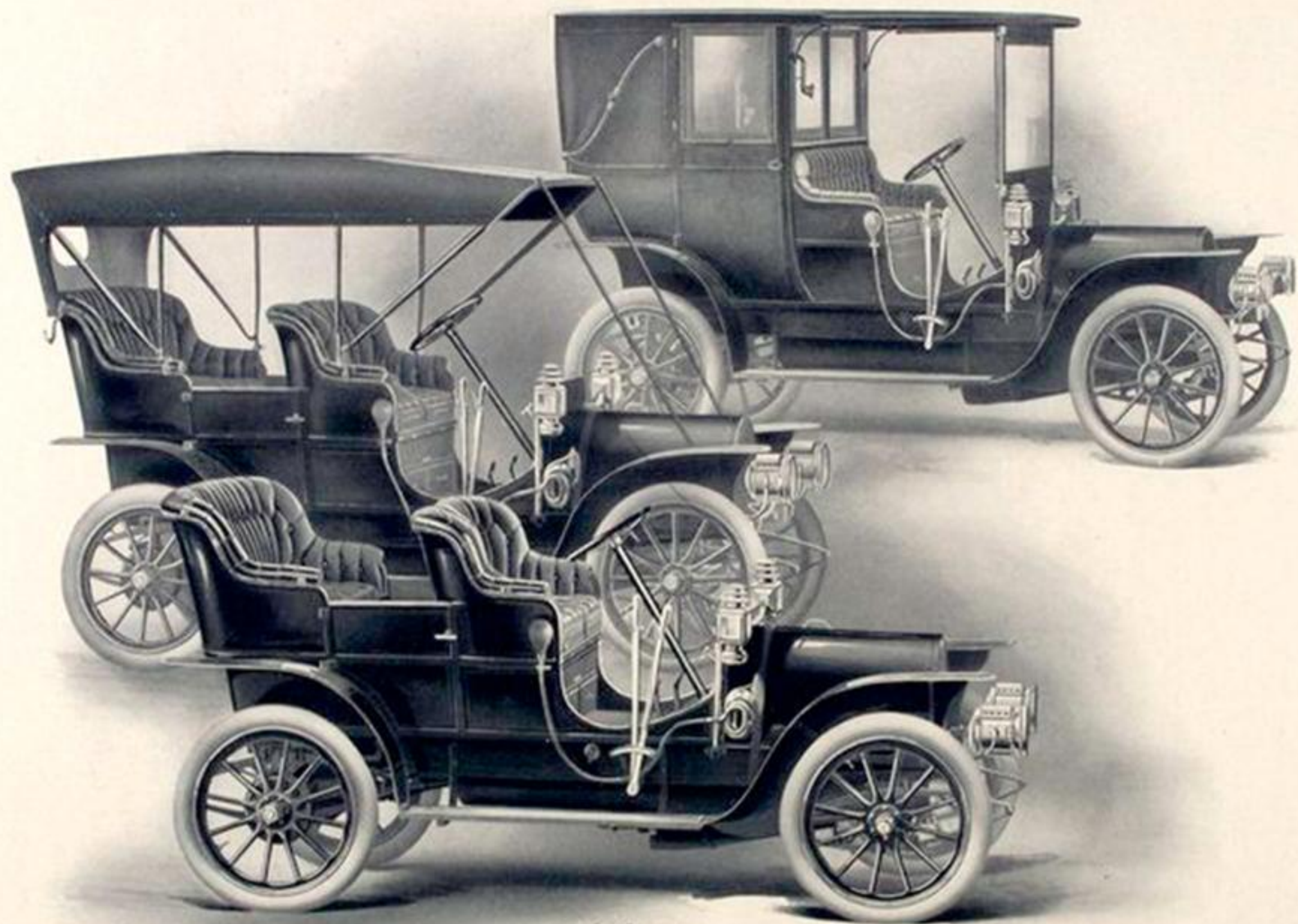


Franklin Model H Six-Cylinder Touring-Car

Model H is so refined that, even as a five-passenger automobile it is more economical than the average five-passenger water-cooled automobile

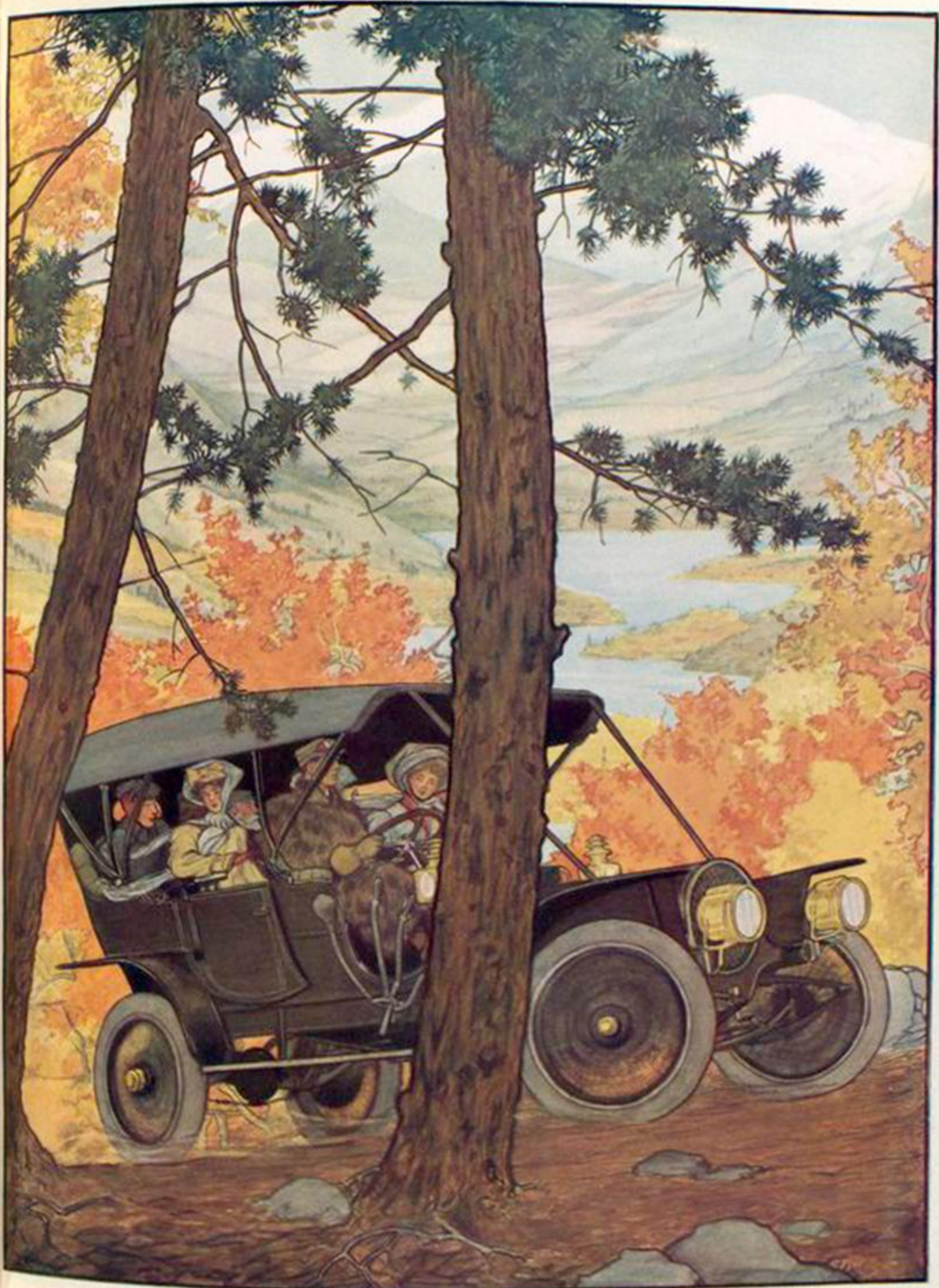


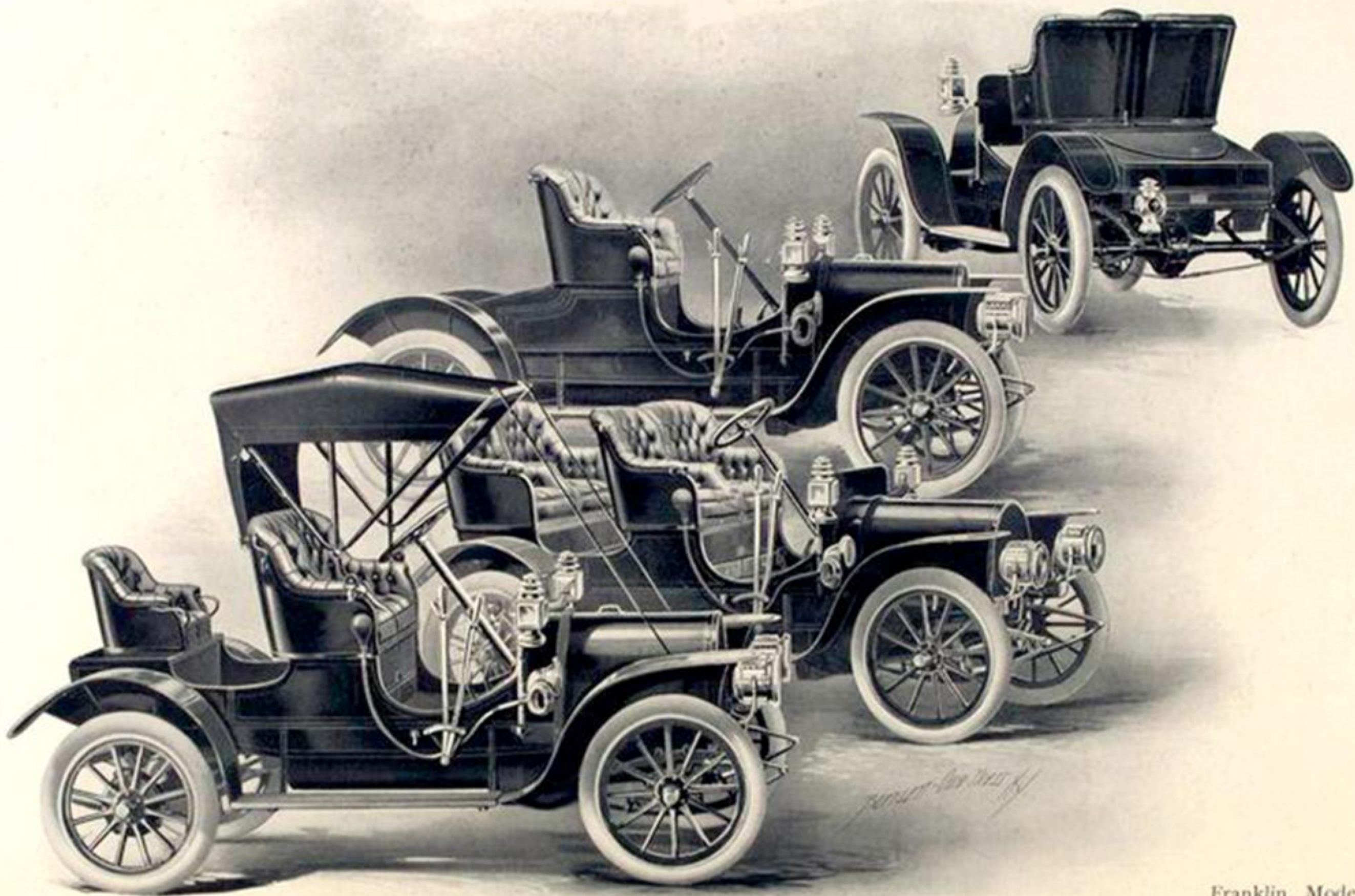
Franklin Model D Touring-Car



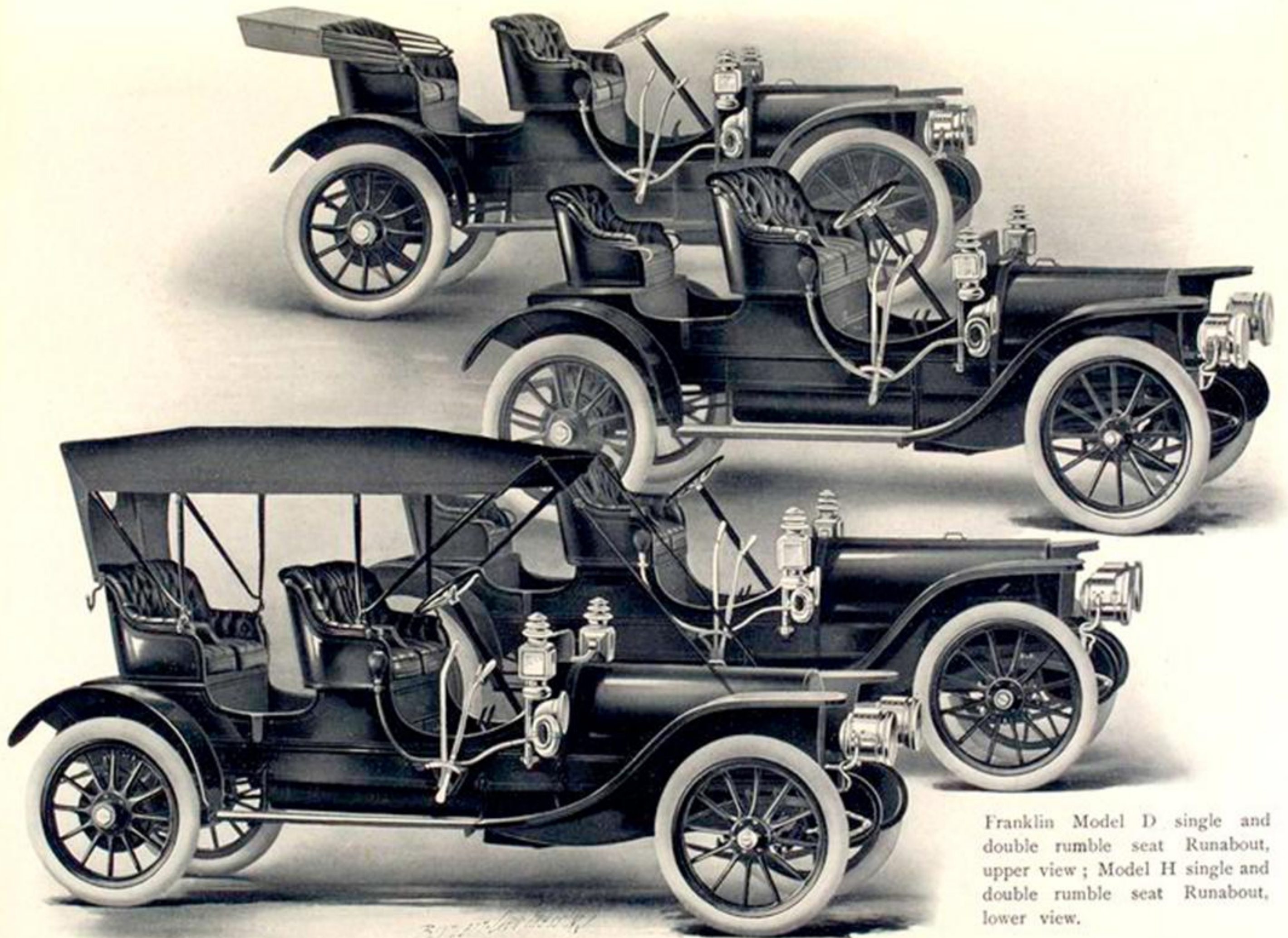
Franklin

Franklin Model G Touring-Car
and Landaulet



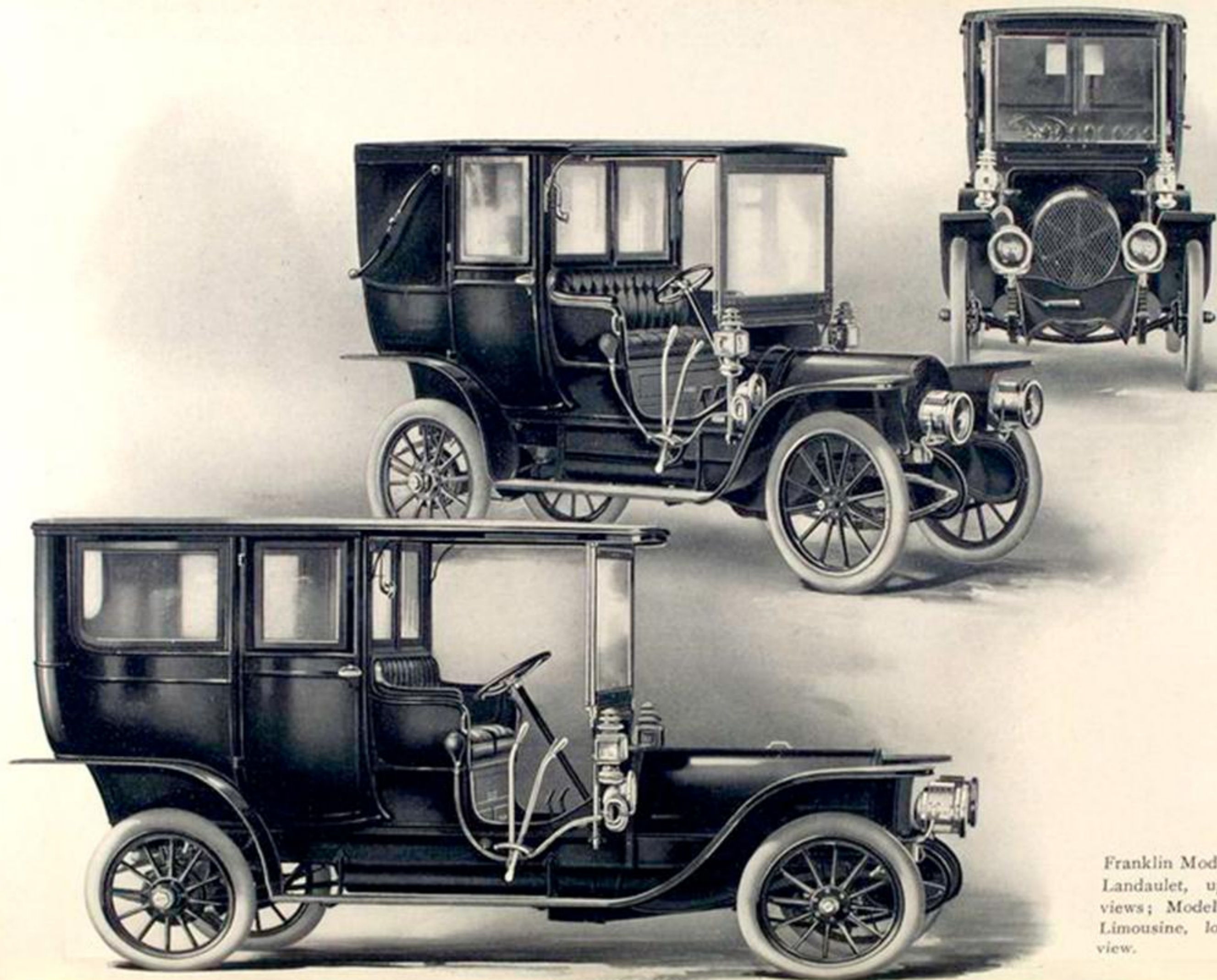


Franklin Model G
Runabout with ham-
per, single and
double rumble seats.



Franklin Model D single and double rumble seat Runabout, upper view ; Model H single and double rumble seat Runabout, lower view.





Franklin Model D
Landaulet, upper
views; Model H
Limousine, lower
view.

