



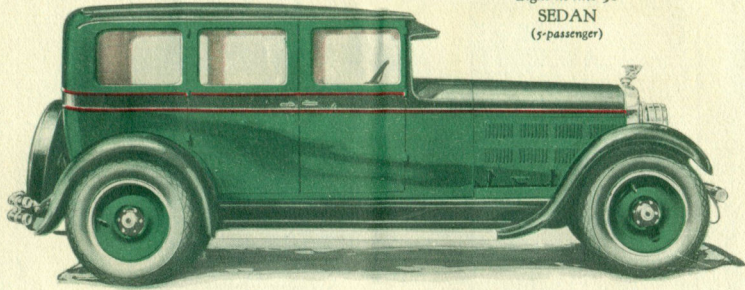
The

GARDNER

EIGHT-IN-LINE

Series
85 and 90

The New Gardner
Eight-in-line 90
SEDAN
(5-passenger)



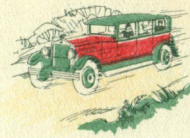
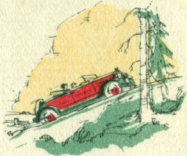
THE age of mechanism, easy handling, luxurious comfort and complete accessories are all exemplified in the Gardner 85 and 90 models, to a degree of excellence and sophistication that is found only in the highest-priced cars here and abroad.

These new Gardner models are not high-priced cars, although they invite minute comparison with the most expensive cars in every detail of looks, decoration, color and performance.

Neither do they belong to the so-called volume products built to meet a price demand.

The Gardner 85 and 90 are both designed as completely, as carefully, as thoroughly as any car at any price. Furthermore, they are built to express the individuality, the personality, the exclusive taste of the owner who wants something more than mere uniform goodness or accepted efficiency.

These two models represent the upper strata of Gardner goodness and exclusiveness. They are the result of years of steady progress in

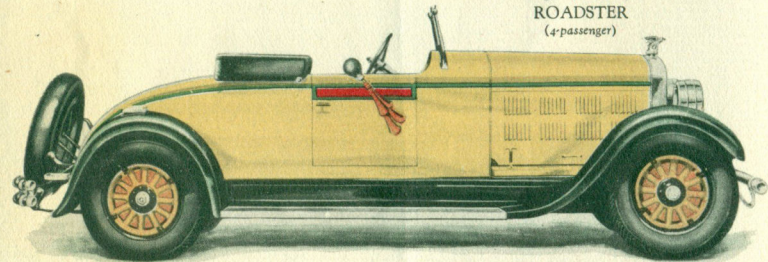


appeal to a special group of thinking, weighing, discriminating people. They are unlike any other cars and they are deliberately intended for distinction and preference through that very unlikeliness. Both have the charm which, in a man or woman, would be called personality. Both have those outstanding qualities of performance that make a virtuoso out of an artist.

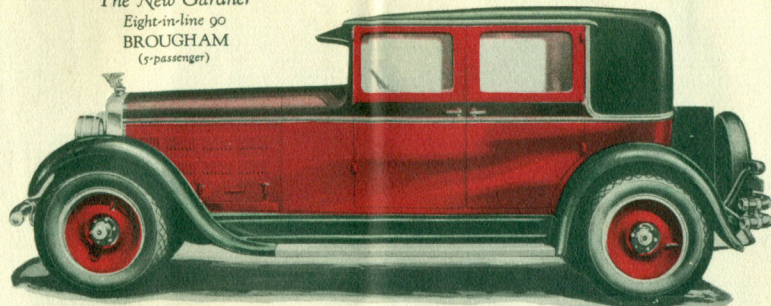
The new Gardner 85—a distinctively different *Eight-in-line*—affords a smoother, more brilliant, more powerful performance on hill and highway than you have ever before experienced. It will actually bring a distinct new-car thrill to the most sophisticated driver.

The new Gardner 90 is as finely engineered and as luxuriously

The New Gardner
Eight-in-line 85
ROADSTER
(4-passenger)



The New Gardner
Eight-in-line 90
BROUGHAM
(5-passenger)



Same body type available on
Series 85 chassis

equipped as any car that can be found in America or Europe. Designed, tailored and decorated inside and out by some of America's most famous artists and body builders, these cars stand less than 70 inches in height and embrace a number of new refinements and features that are possible only through creative engineering and design of an amazing new type.

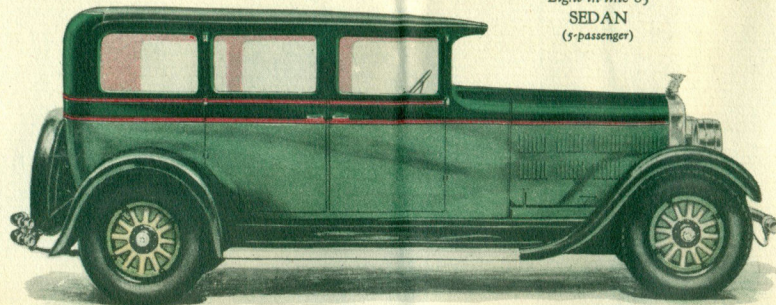
A brief study of the specifications will reveal how completely every new mechanical refinement and improvement has been incorporated for the betterment of high-car performance. It will show you a wide variety of charming color and material combinations and appointments of custom smartness. For those who wish it, a four-speed transmission is available on the Series 90 at a slight extra cost.

It is difficult to speak calmly, to repress one's enthusiasm for the performance, the looks, the perfect savoir-faire that distinguish these de luxe creations.

However, we would rather have your mature judgment than any superlatives we might express



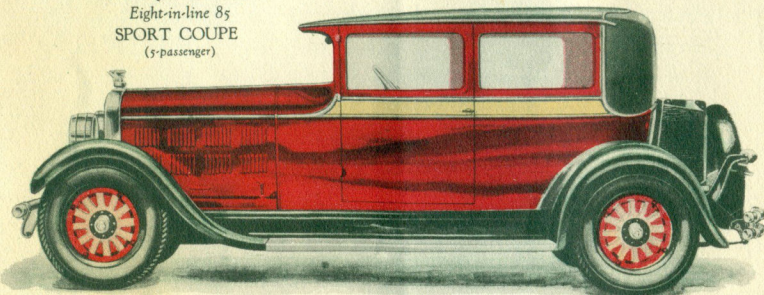
The New Gardner
Eight-in-line 85
SEDAN
(5-passenger)



about these distinctively different Gardners. There is only one way to realize to the full their exclusive, distinctive charm—and that is, to see with your own eyes and to try with your own hands.

Therefore, permit us to urge that you treat yourself to a real ride in either the 85 or 90 before you commit yourself to the purchase of any of the higher-priced cars on the market.

The New Gardner
Eight-in-line 85
SPORT COUPE
(5-passenger)



Same body type also furnished in 4- or 5-passenger

Detailed Specifications

MOTOR—Gardner-Lycoming Eight-in-line, L-head type. Series 85: 2 3/4 x 4 3/4; 254-cubic-inch piston displacement; 74 horsepower. Series 90: 3 1/4 x 4 1/2; 298 cubic-inch piston displacement; 84 horsepower. Water pump. Generator and cam shaft driven by silent chain. Detachable cylinder head.

STEERING GEAR—New improved cam-and-lever type; semi-irreversible; 18-inch walnut steering wheel.

GASOLINE SYSTEM—Vacuum tank feed from large tank at rear of chassis; gas strainer. Schebler carburetor with Swan manifold to equalize distribution of gases.

COOLING SYSTEM—Thermostatic control; chain-driven centrifugal pump; water forced completely around all cylinders. Cellular-type radiator. 18-inch oil-type fan driven by V-type belt. Fan mounted on detachable bracket.

CLUTCH—Borg & Beck dry disc.

TRANSMISSION—Selective sliding-gear type; nickel steel gears; three speeds forward, one reverse. Four-speed transmission supplied on Series 90 models at extra cost.

FRONT AXLE—Drop-forged I-beam; tapered roller bearings in wheels.

REAR AXLE—Semi-float type with one-piece pressed steel housing; nickel steel spiral bevel gears; tapered roller bearings thruout.

SPRINGS—Semi-elliptic.

BRAKES—Gardner enclosed brakes with perfectly balanced equalization on all four wheels.

ELECTRICAL SYSTEM—Delco-Remy; two-unit starting and lighting. Prest-O-Lite battery.

LUBRICATION—Motor—full force feed thru gear-driven pump. Oil filter. Pressure gauge on instrument board. Centralized automatic system of chassis lubrication (manufactured by Alemite).

INSIDE FINISH AND UPHOLSTERY—Sedan, Brougham and Victoria: Luxurious mohair; Butler silver-finished hardware; walnut cowl

(Specifications subject to change without notice)

deflector with recess portion inlaid; wainscoting and garnish mouldings to match; vanity cases; side dome lights; distant-control locks on doors; silk window curtains; silk toggle grips; arm rests. Roadster: Genuine leather to harmonize with body color; tan top.

OUTSIDE FINISH—Two-tone lacquer.

WHEELS—Series 85, wood. Series 90, Disteel. **WHEELBASE**—Series 85, 122 inches. Series 90, 130 inches.

FRAME—Extra heavy-gauge pressed steel; double-drop with tubular cross-members.

TIRES—Series 85, 30 x 6.00 balloons. Series 90, 32 x 6.00 balloons.

STANDARD EQUIPMENT—Series 85: Clear-vision V. & V. ventilating windshield. Clear-vision bodies. Gasline gauge on dash. Chase mohair upholstery with French-type plaiting. Walnut wainscoting on doors—walnut panels on instrument board and window ledges. Enclosed 4-wheel brakes, 30 x 6.00 balloon tires. Special vibration dampener. Nickel headlights with double filament bulbs. Rear-vision mirror. New three-way stop light with backing light operating from transmission. Automatic windshield wiper. Distant-control locks for all doors. Butler silver-finished hardware. Nickel radiator. Handsome Griffin insignia on radiator cap. Instruments and under single glass panel on dash and indirectly lighted. Heat indicator on dash. Ignition lock. Genuine full walnut steering wheel. Fedco Theft-Proof numbering system with Loss-of-Use insurance. Tire cover. Snubbers all around. Balcrank bumpers. Automatic centralized system of chassis lubrication (manufactured by Alemite). Air cleaner. Gasoline strainer. Oil filter. Thermostatic heat control. New vibrator horn. Trunk on Brougham, Victoria and Sport Coupe.

Series 90—Watson Stabilators front and rear. 32 x 6.00 balloon tires. Five Disteel wheels. Automatic windshield wiper. New-type three-way tail light with backing light operating from transmission. Nickel headlights with double-filament bulbs. One-piece V. & V. ventilating windshield. Rear-vision mirror. Balcrank bumpers front and rear. Trunk on Brougham. Tire cover. Automatic centralized system of chassis lubrication (manufactured by Alemite). Thermostatic heat control with engine heat indicator on dash. Fedco Theft-Proof numbering system with Loss-of-Use insurance. Enclosed 4-wheel brakes. Vibration dampener. Clear-vision bodies. Nickel radiator. Handsome Griffin insignia on radiator cap. New-type ignition lock. Walnut wainscoting on doors—walnut panels on instrument board and window ledges. New vibrator horn. Air cleaner. Gasoline strainer. Oil filter.

THE GARDNER MOTOR CO., INC., ST. LOUIS, U. S. A.

Distributed by

